

Yukon Mineral Exploration, Development and Mining Activity 2022

Deposit Type	Commodity	Permitted Mine
△ mafic/ultramafic associated	○ silver	⊗ temporary closure
□ porphyry/sheeted vein	● gold	⊗ active mine
◐ Mississippi Valley Type	● copper	
◇ sediment associated	● nickel ± PGE	
⬡ skarn/replacement	● lead/zinc	
◇ vein/breccia	● molybdenum	
▽ volcanic associated	● tungsten	
⊕ unknown	● rare earth elements (REEs)	

Environmental Assessment
 ⊗ in progress

Mineral Tenure
 ■ active and pending

Note: Large symbols are projects with greater than \$500,000 expenditures. Symbols containing a black dot denote projects that were drilled in 2022.

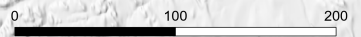
Yukon Terranes

Outboard	Intermontane	Ancestral North America
□ Chugach	■ Cache Creek	■ Cassiar
■ Yakutat	■ Atlin	■ basinal facies
	■ Stikinia	■ shelf facies
	■ Quesnellia	■ craton & cover
■ Bear Creek	■ Yukon-Tanana	
■ Peninsular	■ Slide Mountain	
■ Wrangellia		
■ Alexander		

Arctic
 ■ Arctic Alaska

Map Features

● community	— primary highway
★ capital city	— secondary highway
⊡ deep water port	



March, 2023

This map was created by the Yukon Geological Survey using the best available information at the time of publication.

