

# Yukon Mineral Exploration, Development and Mining Activity - 2021

Deposit Type	Commodity	Permitted Mine
△ mafic/ultramafic associated	○ silver	⊗ temporary closure
□ porphyry/sheeted vein	● gold	⊗ active mine
◇ sediment associated	● copper	
⬡ skarn/replacement	○ tin	
◇ vein/breccia	● nickel ± PGE	<b>Environmental Assessment</b>
▽ volcanic associated	● lead/zinc	⊗ in progress
⊕ IOCG	● cobalt	
	● vanadium	<b>Mineral Tenure</b>
		■ active and pending

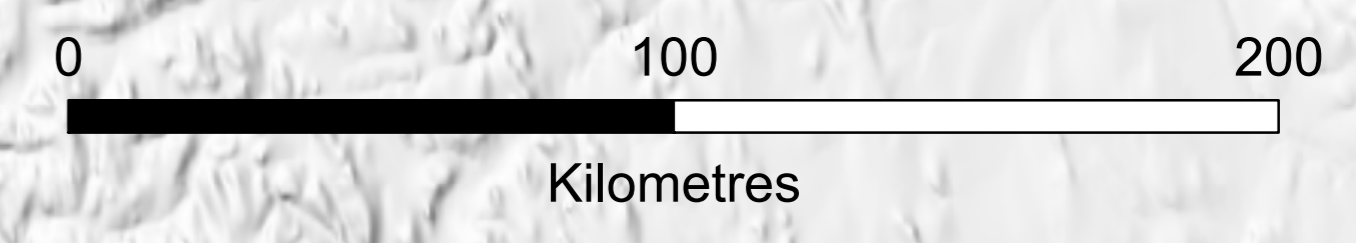
Note: Large symbols are projects with greater than \$500,000 expenditures. Symbols containing a black dot denote projects that were drilled.

### Yukon Terranes

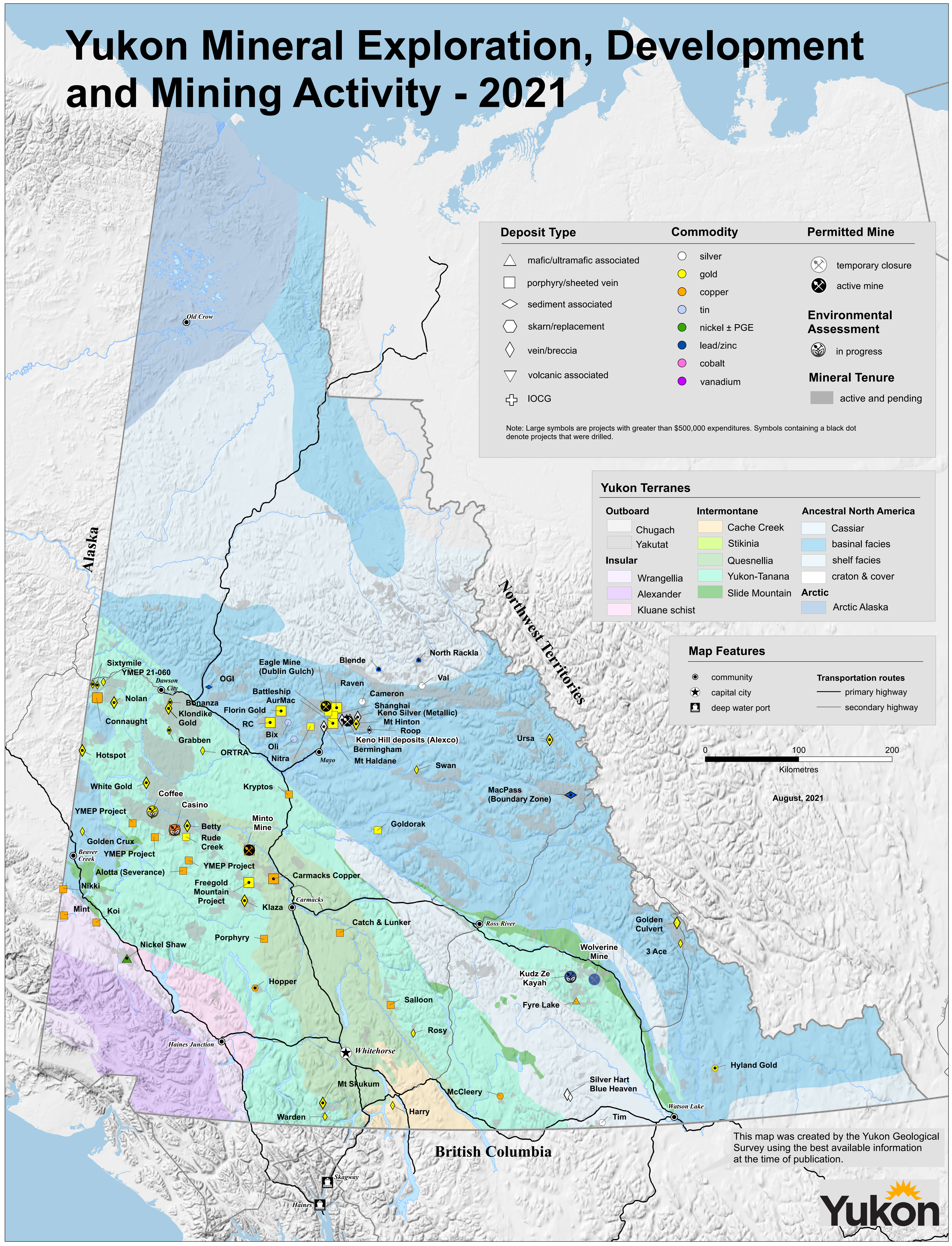
Outboard	Intermontane	Ancestral North America
□ Chugach	■ Cache Creek	□ Cassiar
□ Yakutat	■ Stikinia	■ basal facies
	■ Quesnellia	□ shelf facies
<b>Insular</b>	■ Yukon-Tanana	□ craton & cover
□ Wrangellia	■ Slide Mountain	<b>Arctic</b>
□ Alexander		■ Arctic Alaska
□ Kluane schist		

### Map Features

● community	<b>Transportation routes</b>
★ capital city	— primary highway
⚓ deep water port	— secondary highway



August, 2021



This map was created by the Yukon Geological Survey using the best available information at the time of publication.

