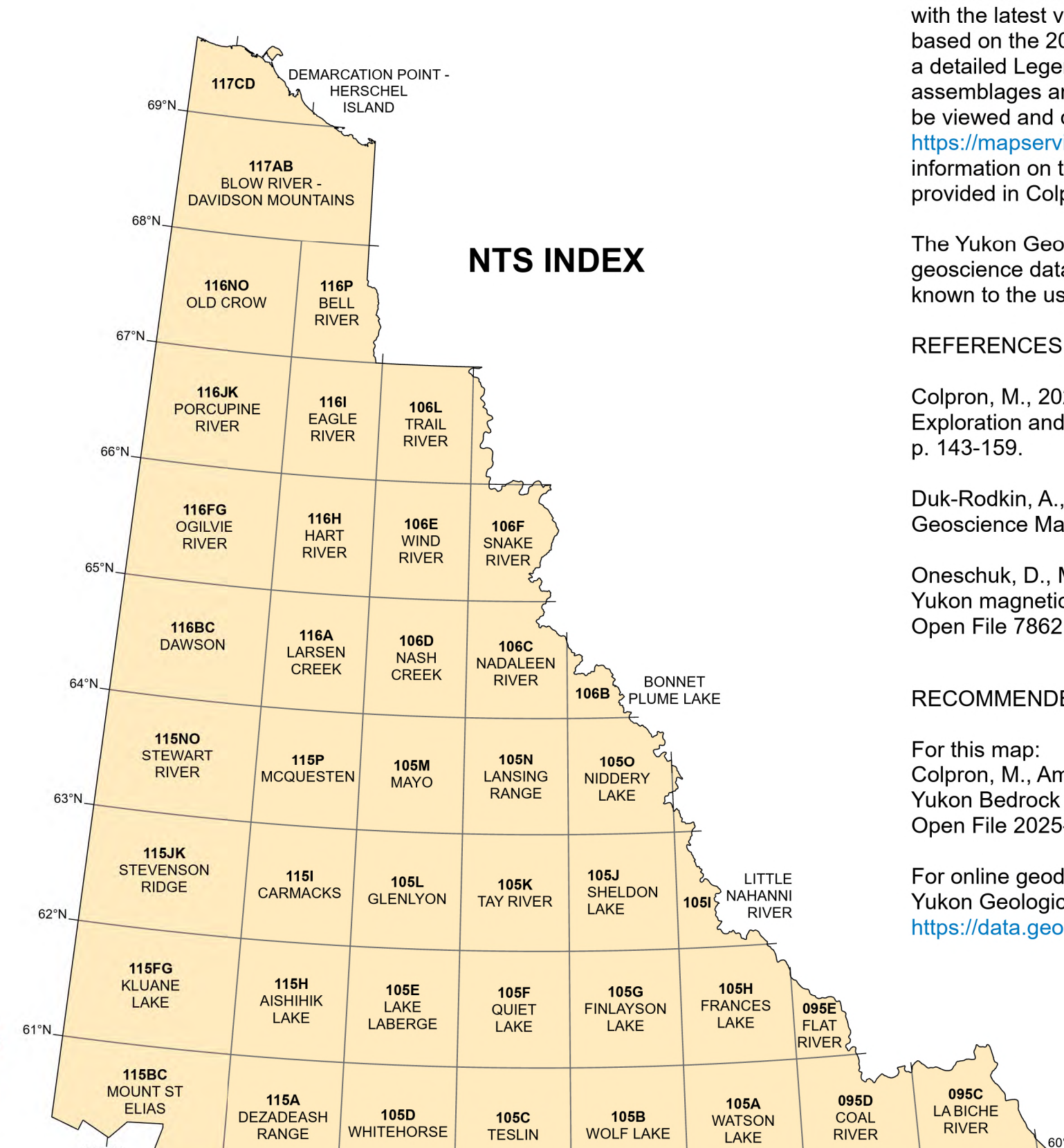
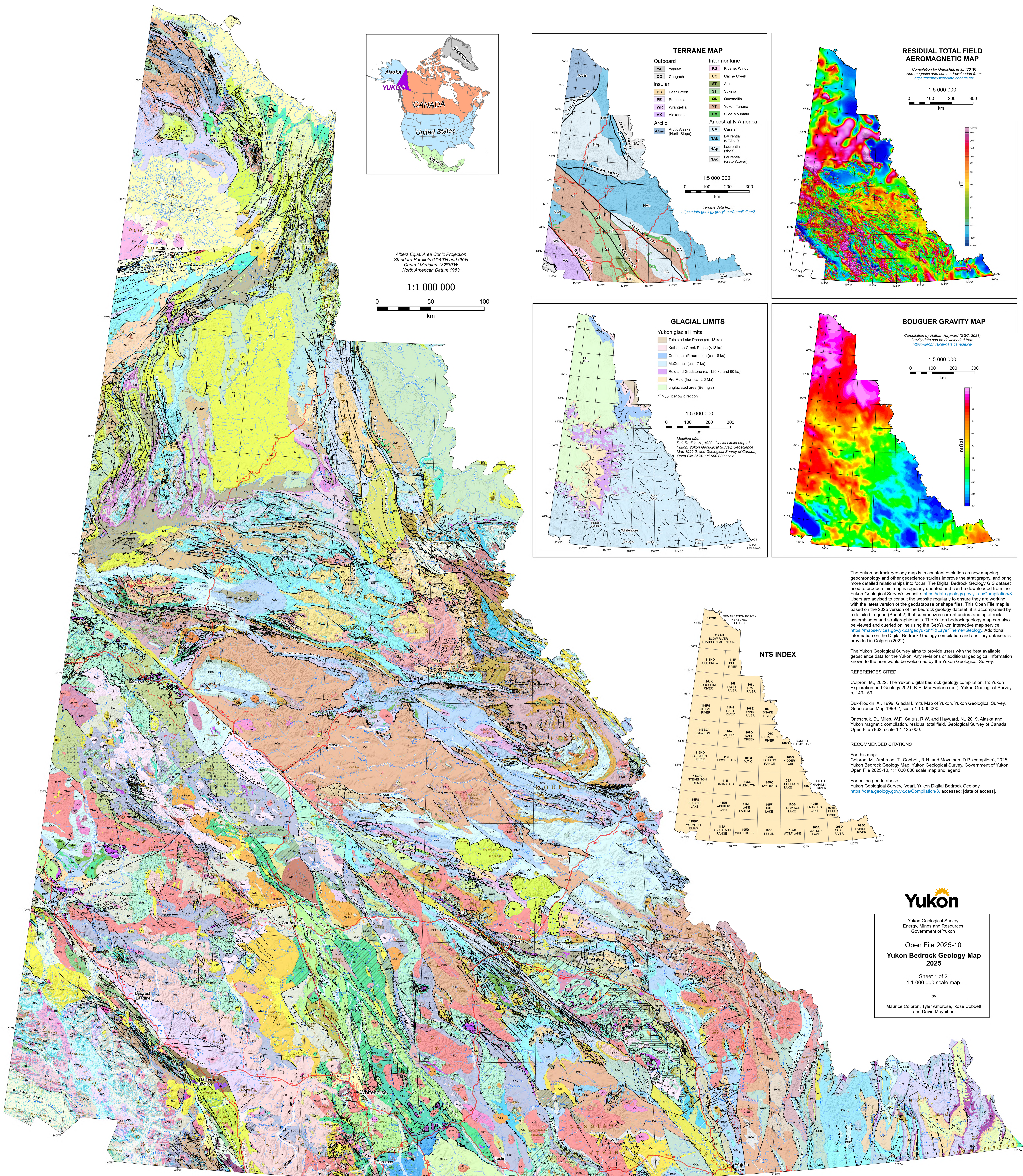
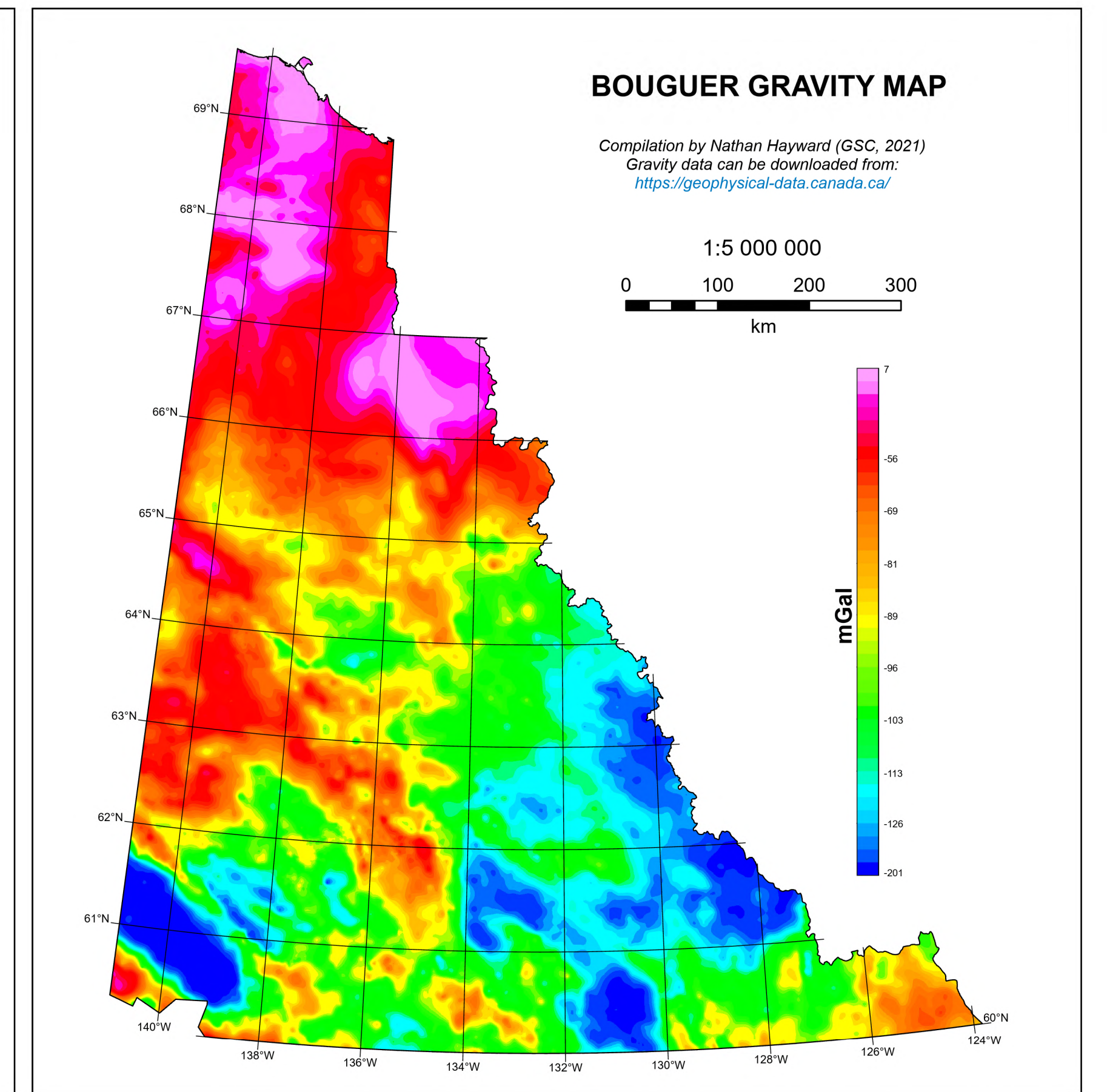
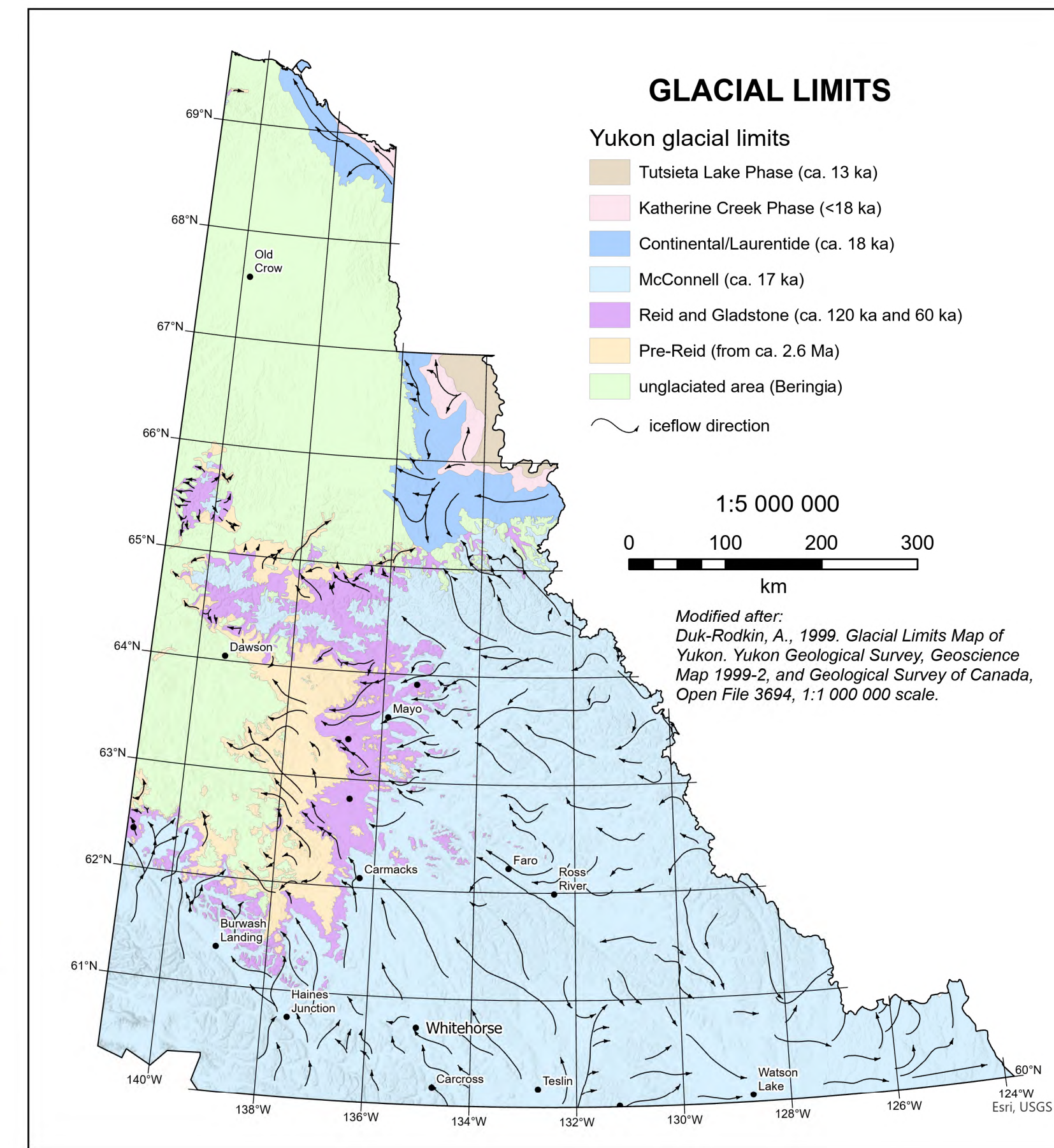
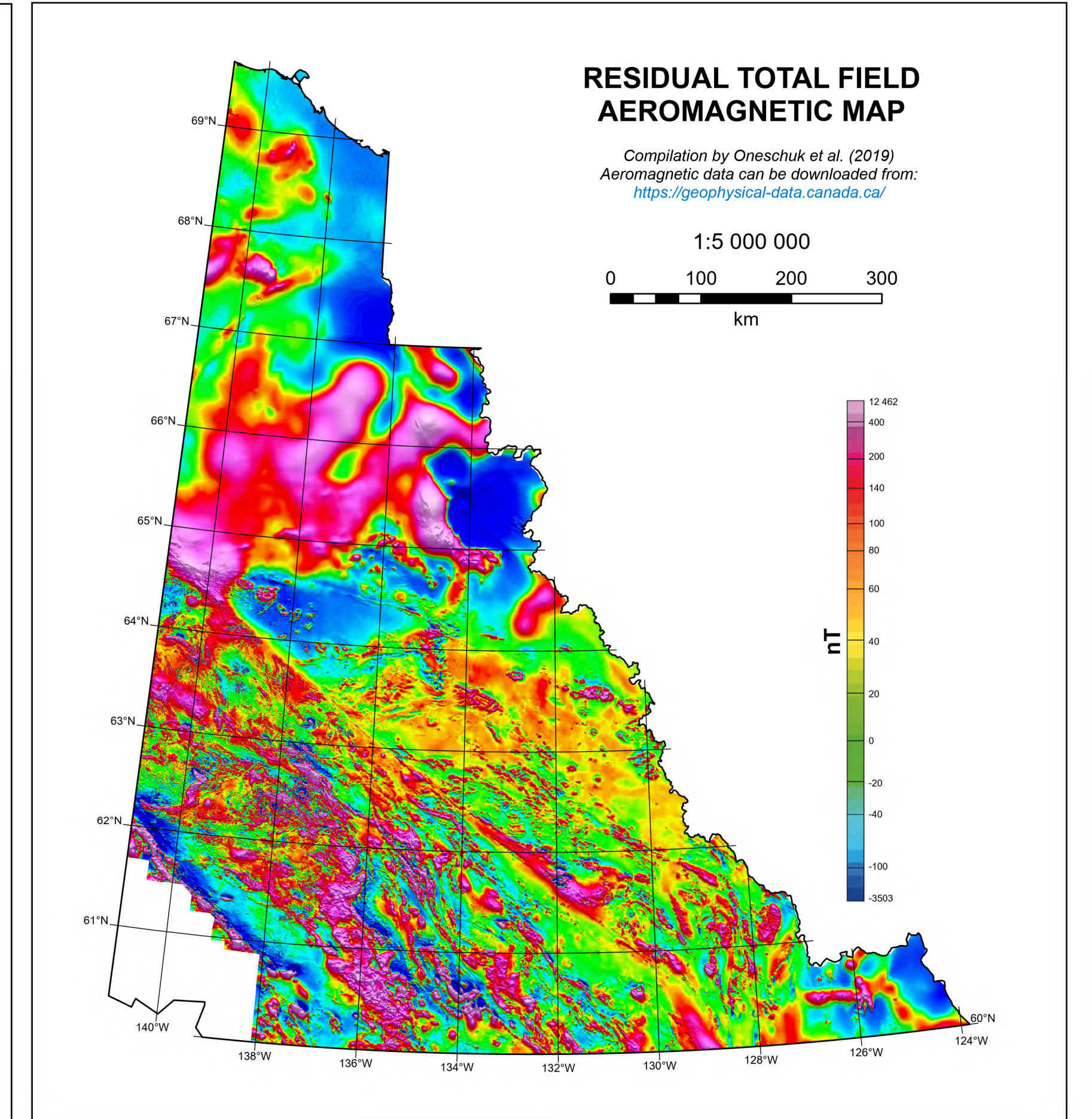
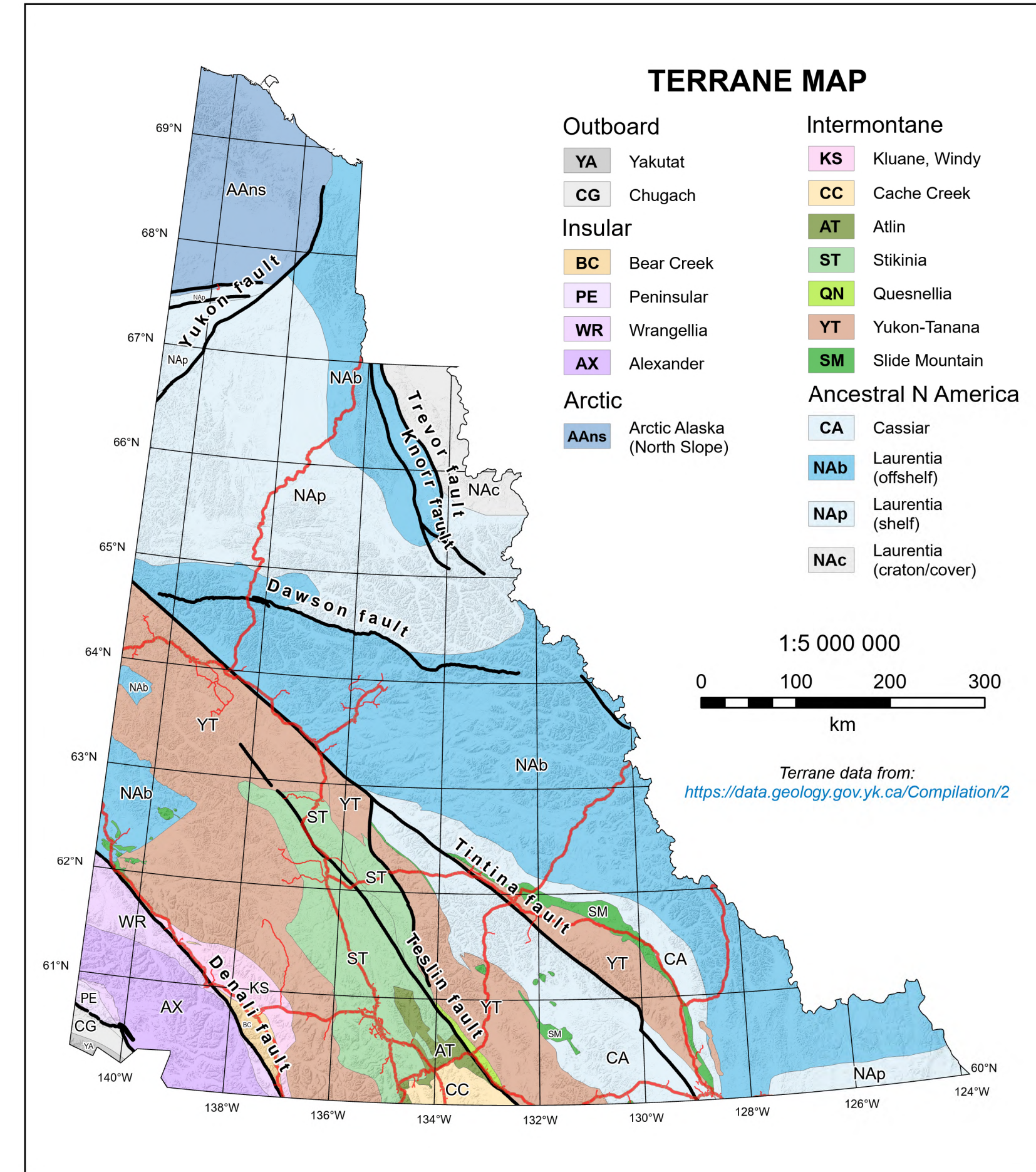
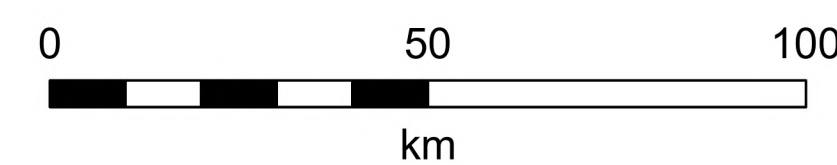


Yukon Bedrock Geology Map 2025



Albers Equal Area Conic Projection
Standard Parallels 61°40'N and 68°N
Central Meridian 132°30'W
North American Datum 1983

1:1 000 000



The Yukon bedrock geology map is in constant evolution as new mapping, geochronology and other geoscience studies improve the stratigraphy, and bring more detailed relationships into focus. The Digital Bedrock Geology GIS dataset used to produce this map is regularly updated and can be downloaded from the Yukon Geological Survey's website: <https://data.geology.gov.yk.ca/Compilation3>. Users are advised to consult the website regularly to ensure they are working with the latest version of the geodatabase or shape files. This Open File map is based on the 2025 version of the bedrock geology dataset; it is accompanied by a detailed Legend (Sheet 2) that summarizes current understanding of rock assemblages and stratigraphic units. The Yukon bedrock geology map can also be viewed and queried online using the GeoYukon interactive map service: <https://mgservices.gov.yk.ca/geoyukon/18/Layer?Theme=Geology>. Additional information on the Digital Bedrock Geology compilation and ancillary datasets is provided in Colpron (2022).

The Yukon Geological Survey aims to provide users with the best available geoscience data for the Yukon. Any revisions or additional geological information known to the user would be welcomed by the Yukon Geological Survey.

REFERENCES CITED

Colpron, M., 2022. The Yukon digital bedrock geology compilation. In: Yukon Exploration and Geology 2021, K.E. MacFarlane (ed.), Yukon Geological Survey, p. 143-159.

Duk-Rodkin, A., 1999. Glacial Limits Map of Yukon. Yukon Geological Survey, Geoscience Map 1999-2, scale 1:1 000 000.

Oneschuk, D., Miles, W.F., Saltus, R.W. and Hayward, N., 2019. Alaska and Yukon magnetic compilation, residual total field. Geological Survey of Canada, Open File 7862, scale 1:1 125 000.

RECOMMENDED CITATIONS

For this map:
Colpron, M., Ambrose, T., Cobbett, R.N. and Moynihan, D.P. (compilers). 2025. Yukon Bedrock Geology Map. Yukon Geological Survey, Government of Yukon, Open File 2025-10, 1:1 000 000 scale map and legend.

For online geodatabase:
Yukon Geological Survey, [year]. Yukon Digital Bedrock Geology. <https://data.geology.gov.yk.ca/Compilation3>, accessed: [date of access].

Yukon Geological Survey
Energy, Mines and Resources
Government of Yukon

**Open File 2025-10
Yukon Bedrock Geology Map
2025**

Sheet 1 of 2
1:1 000 000 scale map

by
Maurice Colpron, Tyler Ambrose, Rose Cobbett
and David Moynihan

Yukon Geological Map Legend 2025

