

Faro area thermokarst lakes

Location: 62.261873°N 133.320512°W

DETAILS:

Four kilometers northwest of the town of Faro, nine small thermokarst lakes have developed as ground ice has thawed within silt-rich till (Turner et al., 2014). The largest amongst these measures 30 m in diameter.



Figure 1. A small thermokarst pond approximately 30 m in diameter. The lack of tipped trees and the presence of well-established shoreline vegetation indicate that thawing is no longer active and the size of the lake has recently been stable.

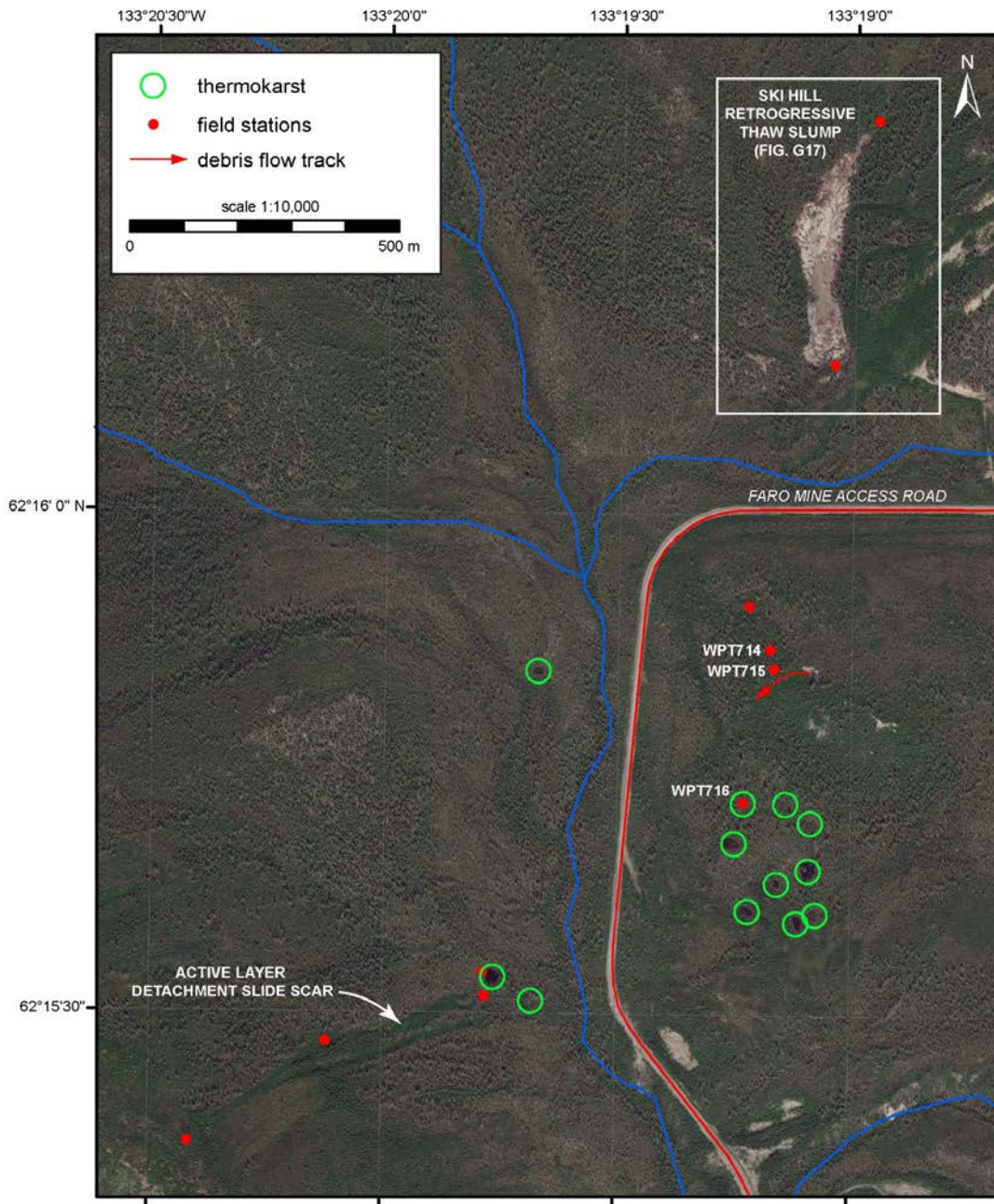


Figure 2. Location of thermokarst lakes outside of Faro relative to local roads and other periglacial features in the area.

REFERENCES AND FURTHER READING

Benkert, B.E., Fortier, D., Lipovsky, P., Lewkowicz, A., Roy, L.-P., de Grandpré, I., Grandmont, K., Turner, D., Laxton, S., and Moote, K., 2015. Faro Landscape Hazards: Geoscience Mapping

for Climate Change Adaptation Planning. Northern Climate ExChange, Yukon Research Centre, Yukon College. 130 p. and 2 maps.

Bond, J.D., 1999. Surficial geology map and till geochemistry of Mount Mye and Faro (105K/3&6 NW), Central Yukon. Yukon Geological Survey, Open File 1999-8, scale 1:25,000.

Jackson, L.E., Jr, 1993. Surficial Geology, Magundy River, Yukon Territory. Geological Survey of Canada, Map 1821A, scale 1:100,000.

Turner, D .G. Bond, J.D., and Lipovsky, P.S., 2014. Surficial geology, Faro region, Yukon, parts of N TS 105K /3, 4, 5 & 6 (1:25 000 scale). Yukon Geological Survey, Energy, Mines and Resources, Government of Yukon, Open File 2014-14.