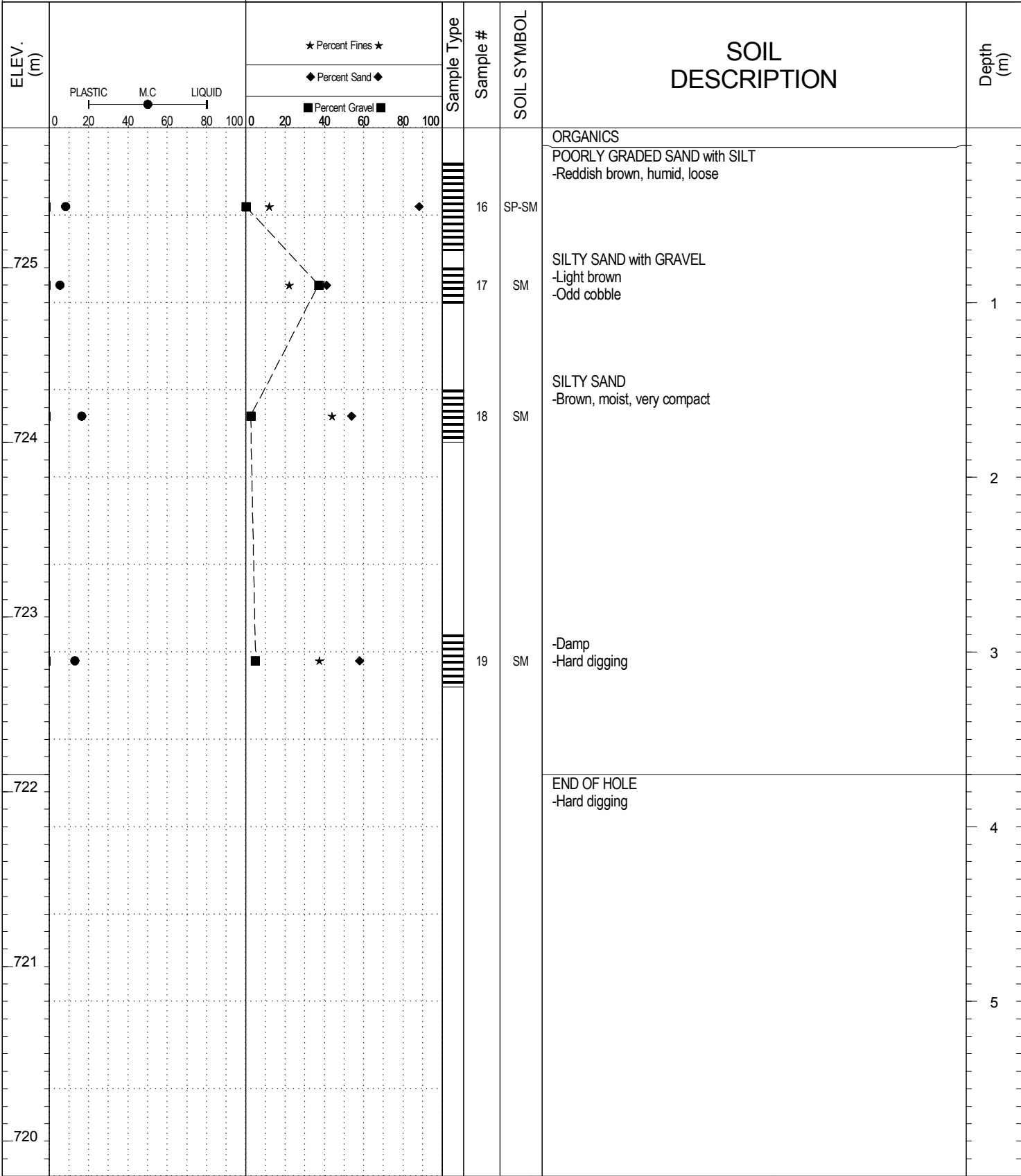
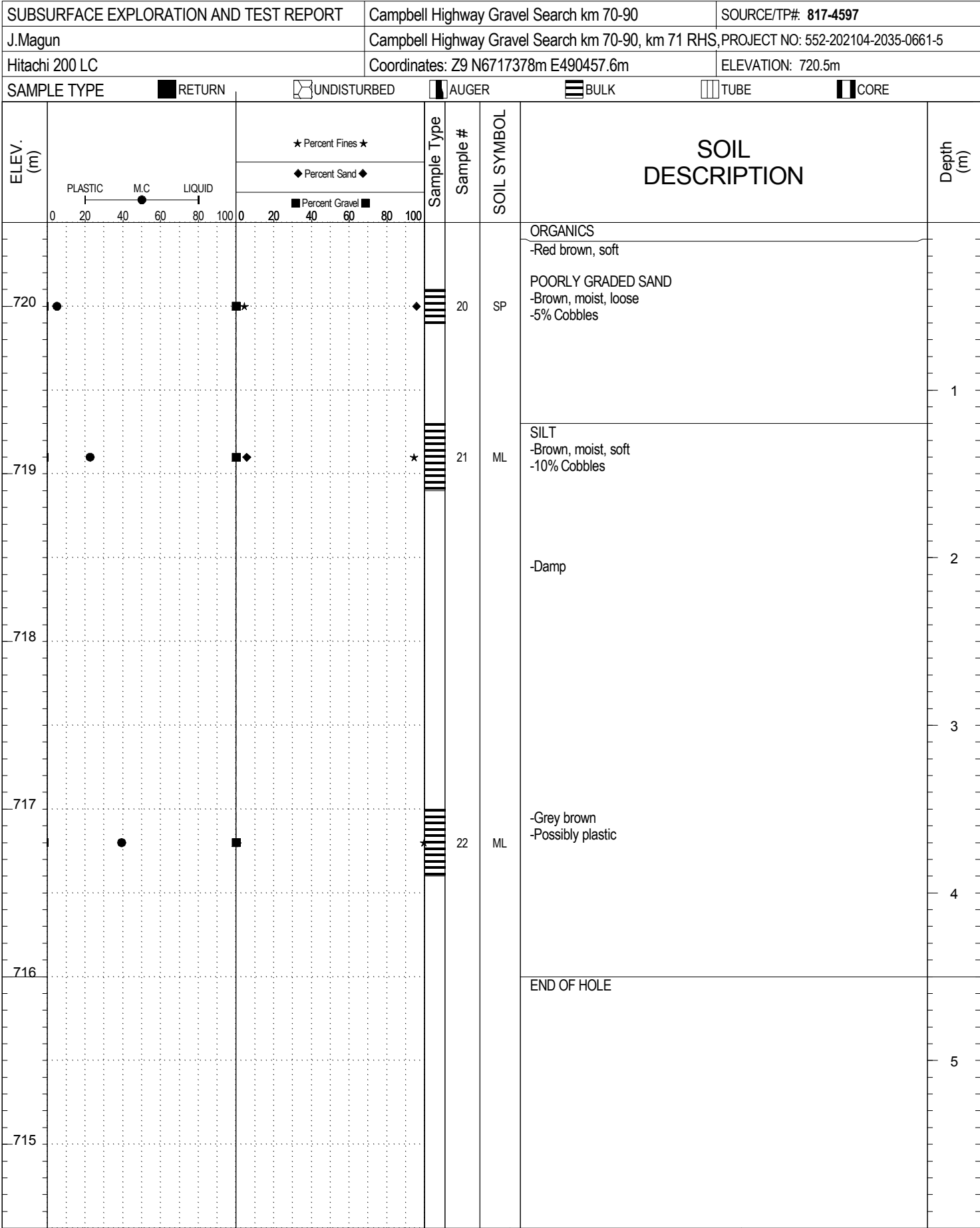
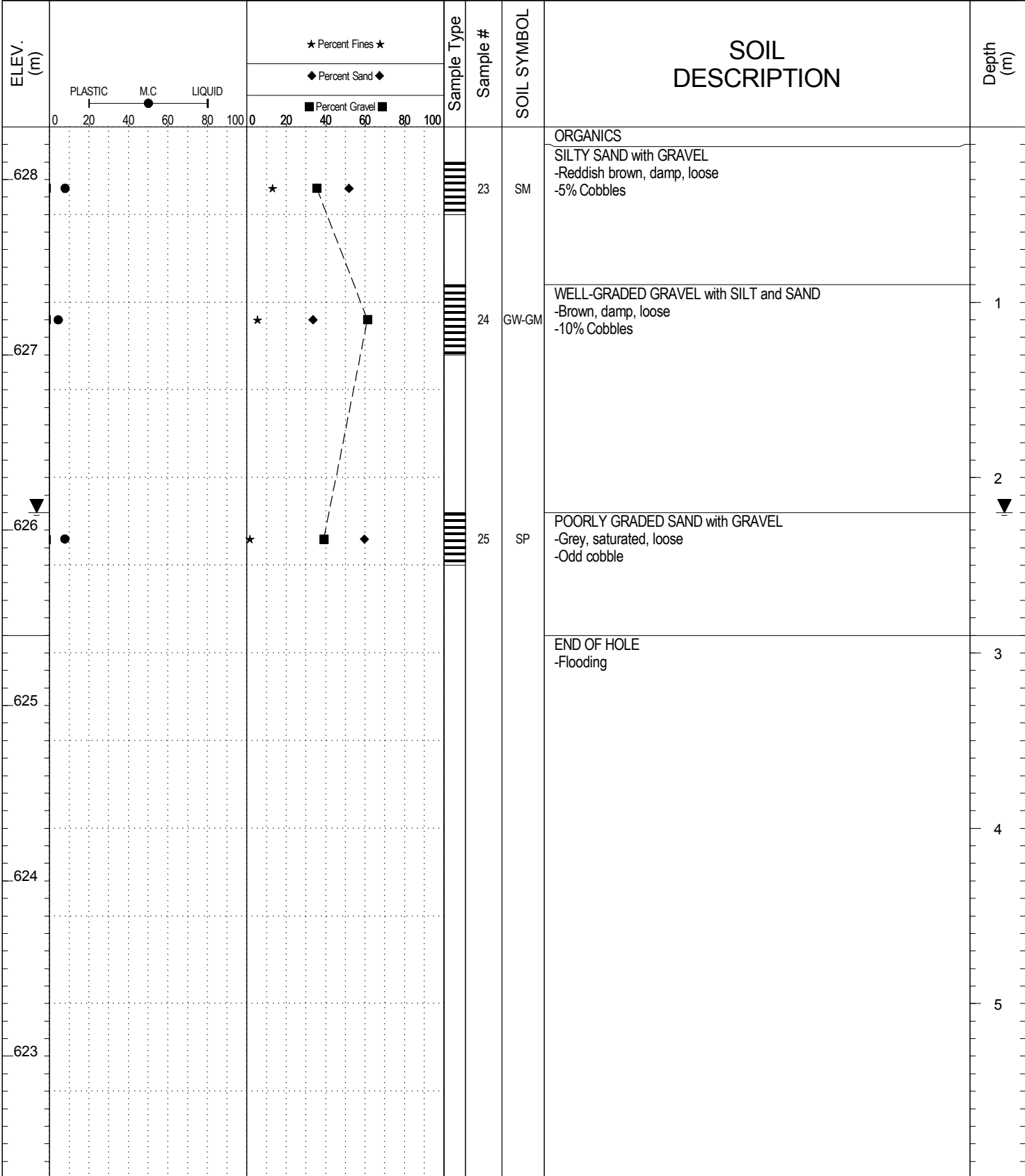


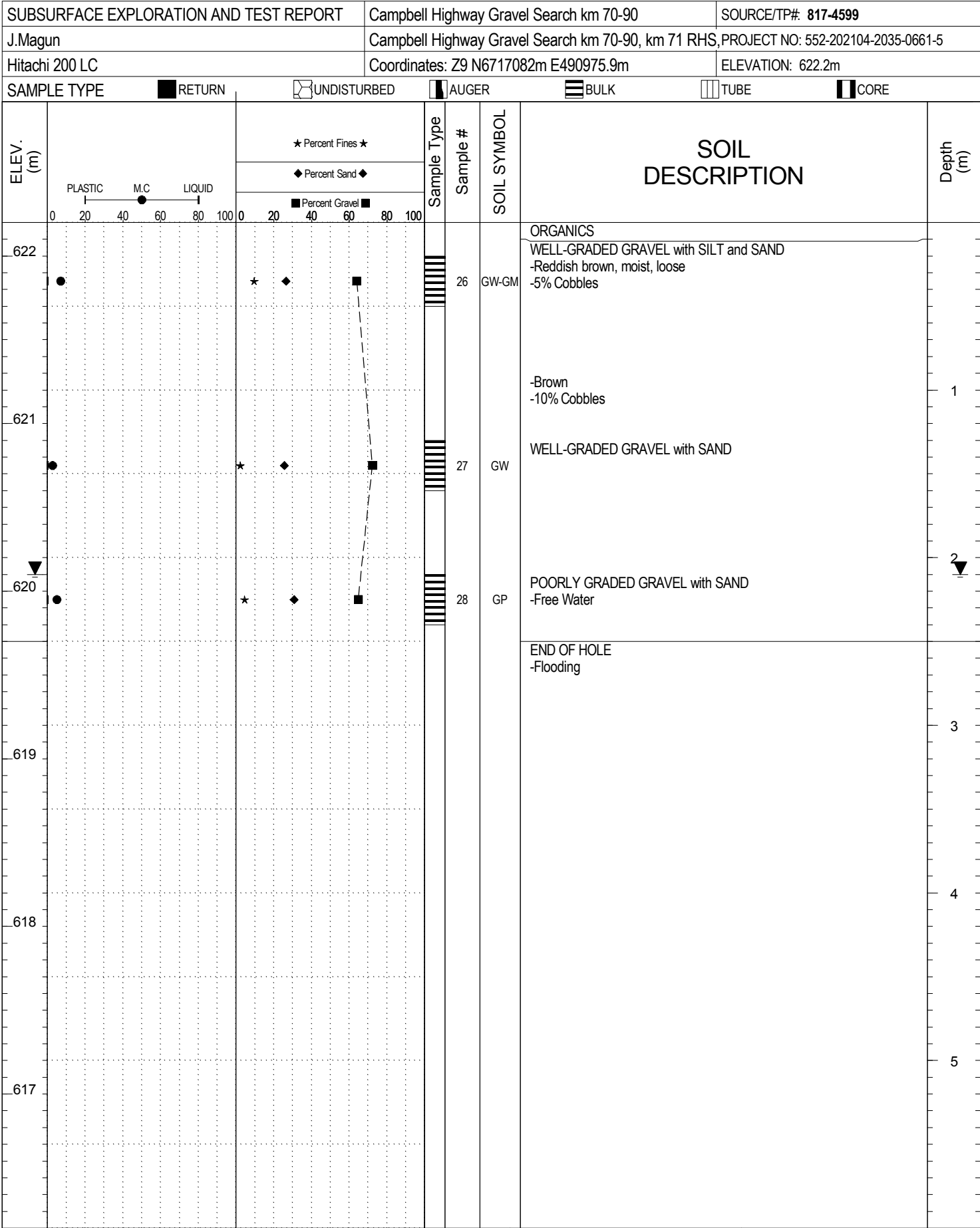
SAMPLE TYPE RETURN UNDISTURBED AUGER BULK TUBE CORE





SAMPLE TYPE RETURN UNDISTURBED AUGER BULK TUBE CORE



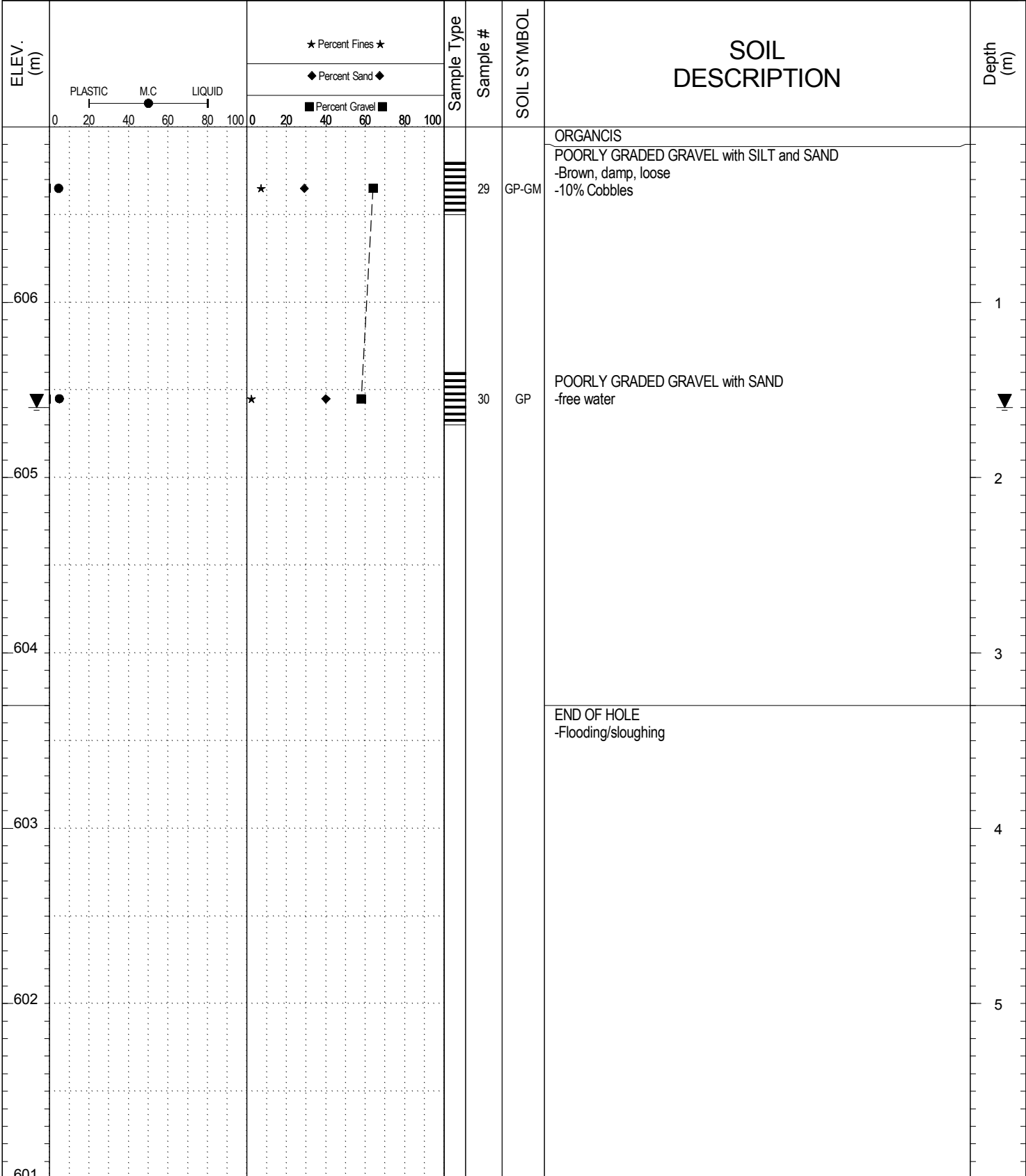


SUBSURFACE EXPLORATION AND TEST REPORT Campbell Highway Gravel Search km 70-90 SOURCE/TP#: 817-4600

J.Magun Campbell Highway Gravel Search km 70-90, km 71 RHS, PROJECT NO: 552-202104-2035-0661-5

Hitachi 200 LC Coordinates: Z9 N6717036.6m E491060.5m ELEVATION: 607m

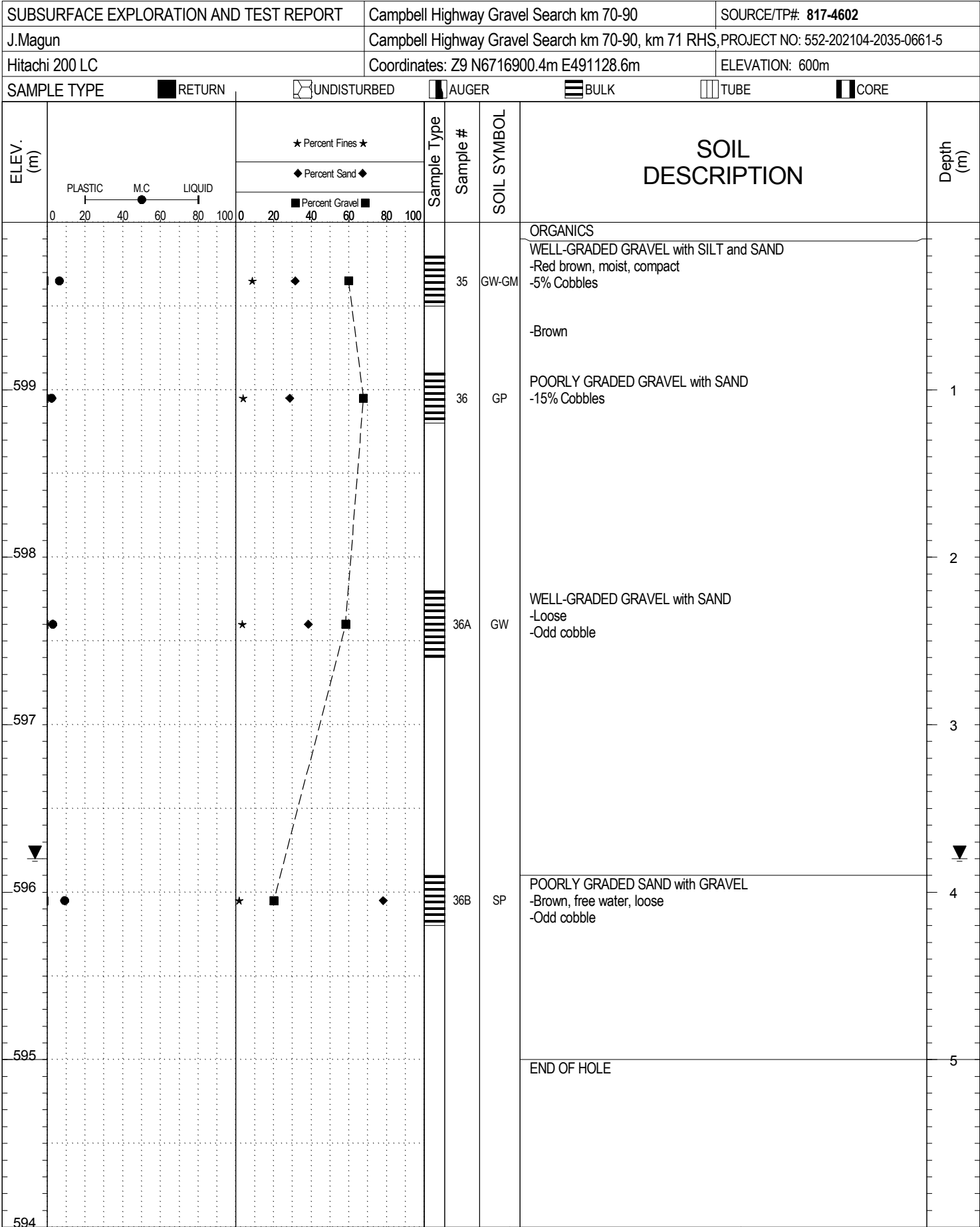
SAMPLE TYPE RETURN UNDISTURBED AUGER BULK TUBE CORE



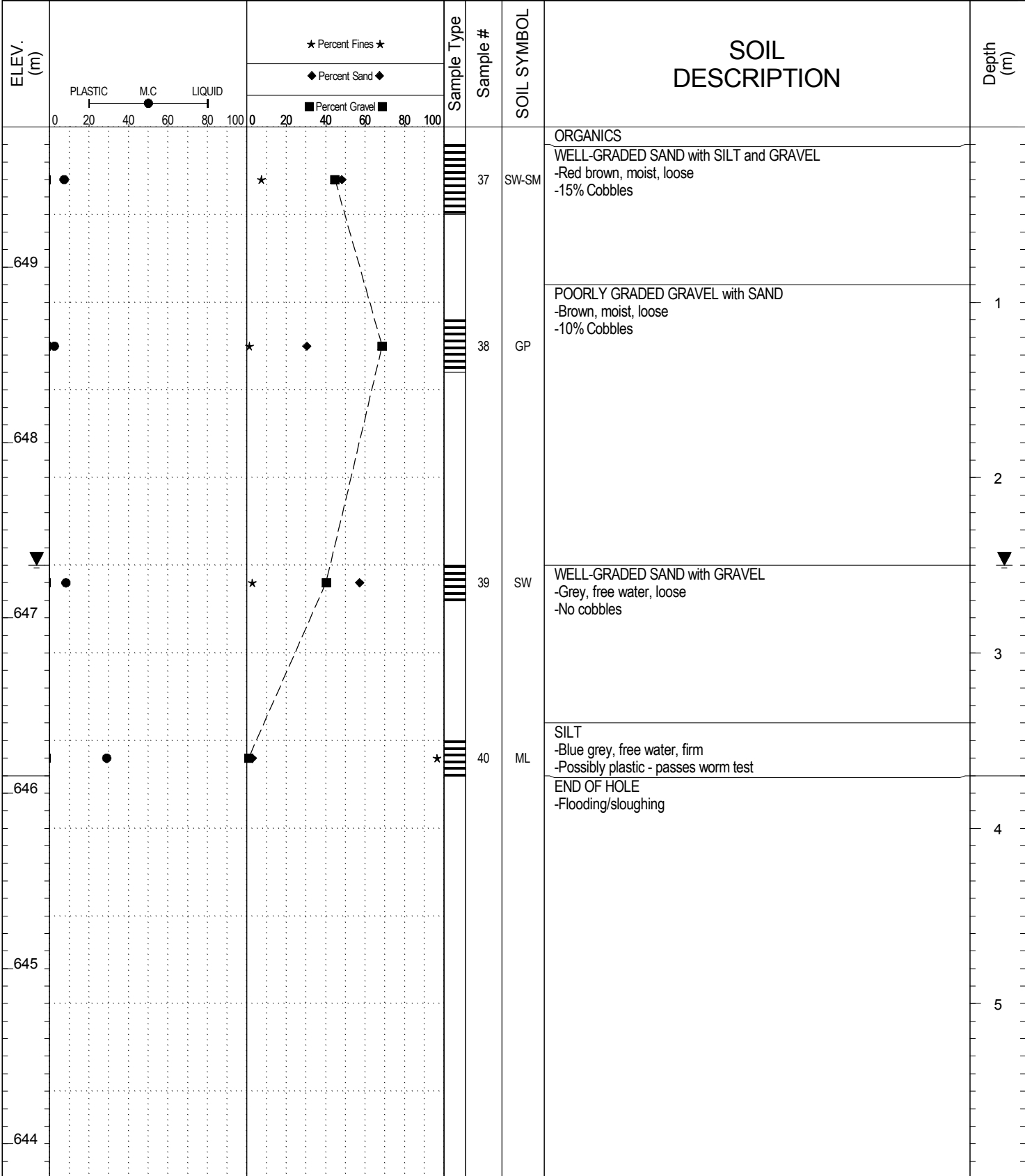
**Highways and Public Works
Transportation Engineering Branch**

| | |
|-----------------------------------|------------------------------------|
| LOGGED BY: R.Stilwell | Termination Depth: 3.3m |
| REVIEWED BY: M. Idrees | Complete: 10/12/2013 12:15:00 PM |
| PROJECT ENGINEER: Muhammad Idrees | Pit #: unassigned Page 1 of 1 |

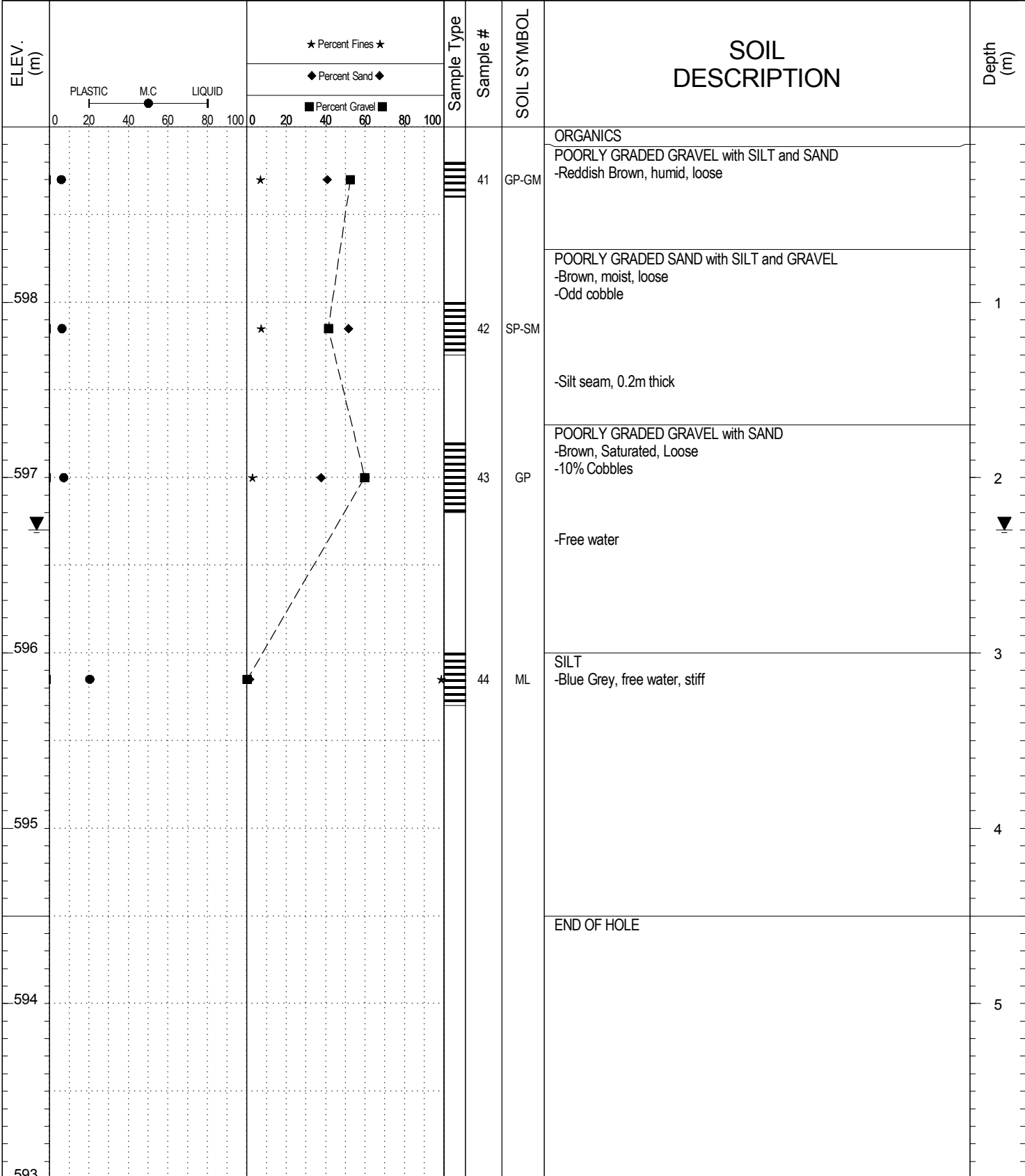
| SUBSURFACE EXPLORATION AND TEST REPORT | | Campbell Highway Gravel Search km 70-90 | | SOURCE/TP#: 817-4601 | | | | |
|--|--|--|---|--|----------|---|------------------|-----------|
| J.Magun | | Campbell Highway Gravel Search km 70-90, km 71 RHS, PROJECT NO: 552-202104-2035-0661-5 | | | | | | |
| Hitachi 200 LC | | Coordinates: Z9 N6716964m E491115.6m | | ELEVATION: 596.5m | | | | |
| SAMPLE TYPE | RETURN | UNDISTURBED | AUGER | BULK | TUBE | CORE | | |
| ELEV. (m) | PLASTIC M.C LIQUID 0 20 40 60 80 100 | | ★ Percent Fines ★ ◆ Percent Sand ◆ ■ Percent Gravel ■ | Sample Type | Sample # | SOIL SYMBOL | SOIL DESCRIPTION | Depth (m) |
| | | | | | | | | |
| 596 | | | | 31 | GP-GM | ORGANICS -Reddish brown POORLY GRADED GRAVEL with SILT and SAND -Brown, moist, loose -10% Cobbles | 1 | |
| 595 | | | | 32 | GP | POORLY GRADED GRAVEL with SAND -5% Cobbles | 2 | |
| 594 | | | | 33 | SP | POORLY GRADED SAND with GRAVEL -Grey, damp, loose | 3 | |
| 593 | | | | | | -Free water | 4 | |
| 592 | | | | 34 | ML | SILT -Blue grey, free water, soft | | |
| 591 | | | | | | END OF HOLE | 5 | |
| | | | | LOGGED BY: R.Stilwell REVIEWED BY: M. Idrees PROJECT ENGINEER: Muhammad Idrees | | Termination Depth: 4.5m Complete: 10/12/2013 1:15:00 PM Pit #: unassigned | | |

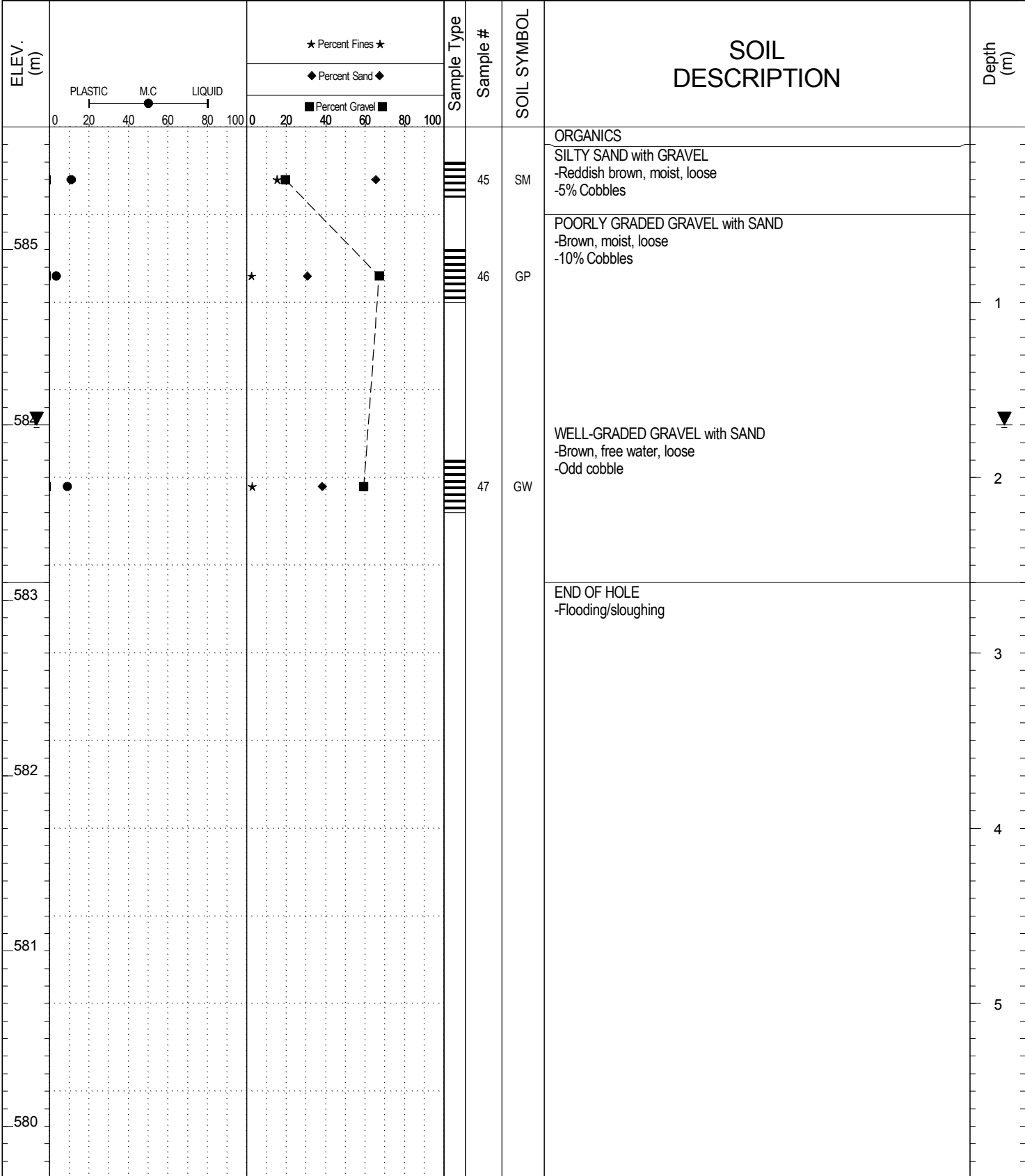


SAMPLE TYPE RETURN UNDISTURBED AUGER BULK TUBE CORE



SAMPLE TYPE RETURN UNDISTURBED AUGER BULK TUBE CORE



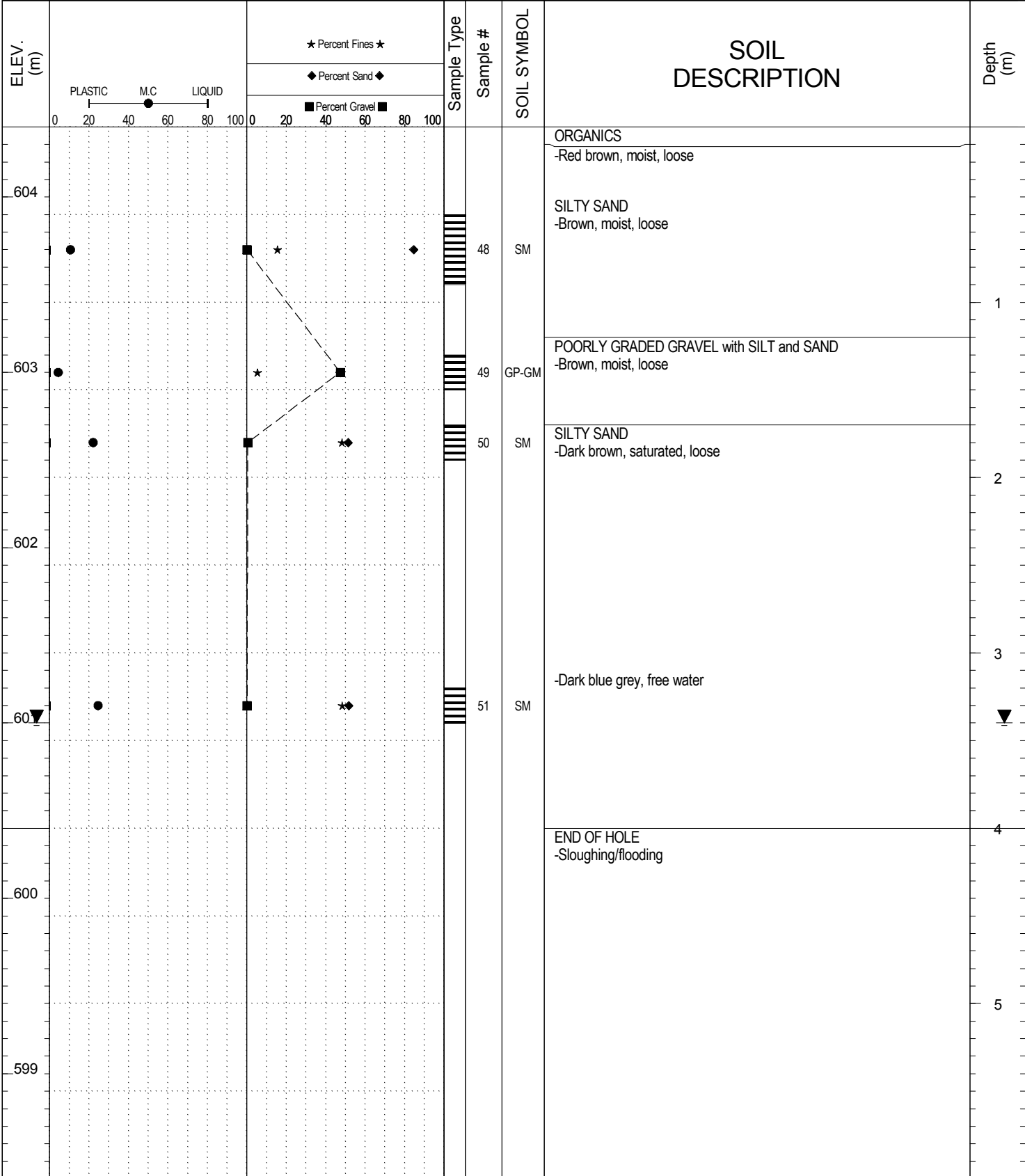


SUBSURFACE EXPLORATION AND TEST REPORT Campbell Highway Gravel Search km 70-90 SOURCE/TP#: 817-4606

J.Magun Campbell Highway Gravel Search km 70-90, km 71 RHS, PROJECT NO: 552-202104-2035-0661-5

Hitachi 200 LC Coordinates: Z9 N6716726.9m E491061.3m ELEVATION: 604.4m

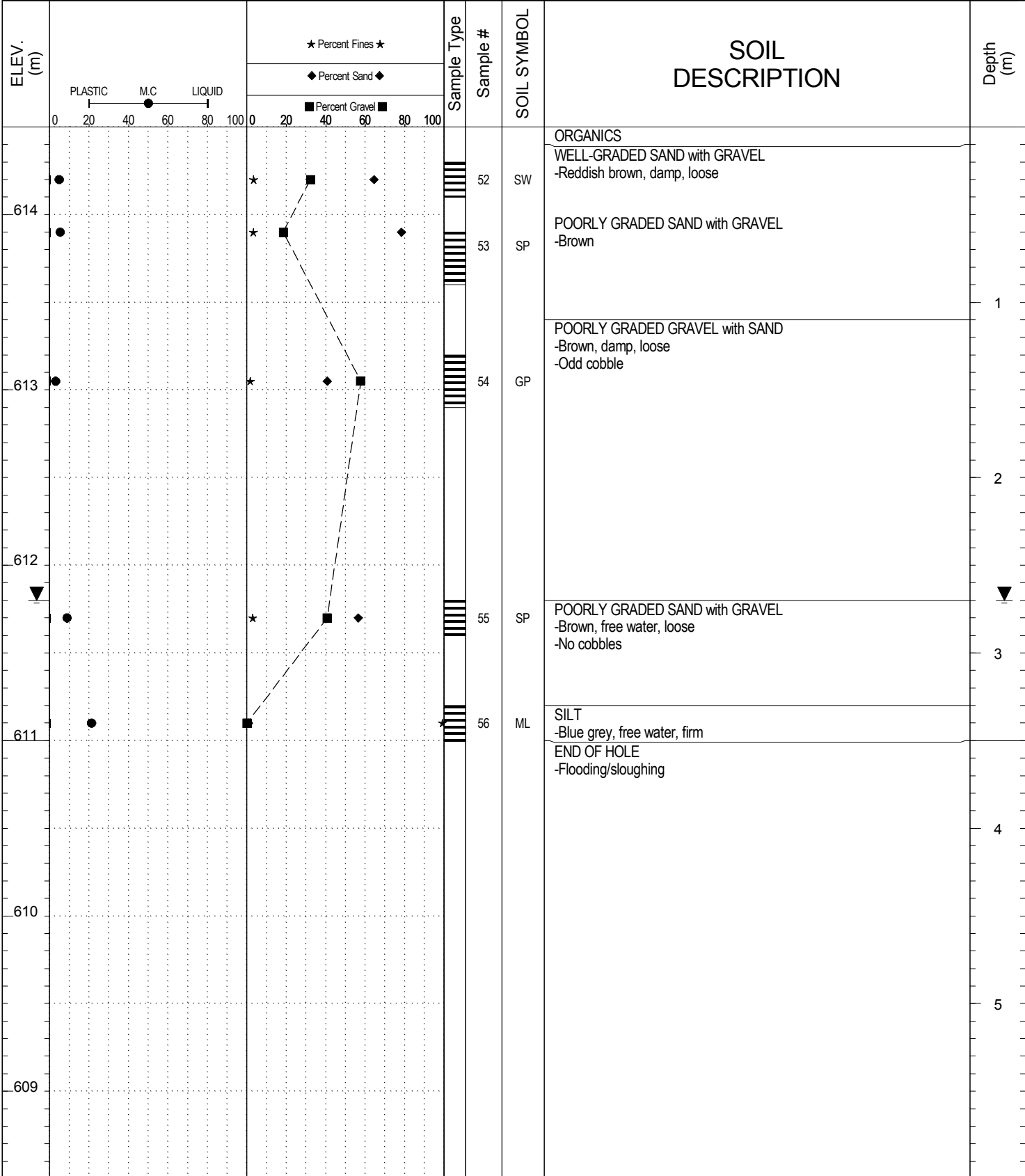
SAMPLE TYPE RETURN UNDISTURBED AUGER BULK TUBE CORE

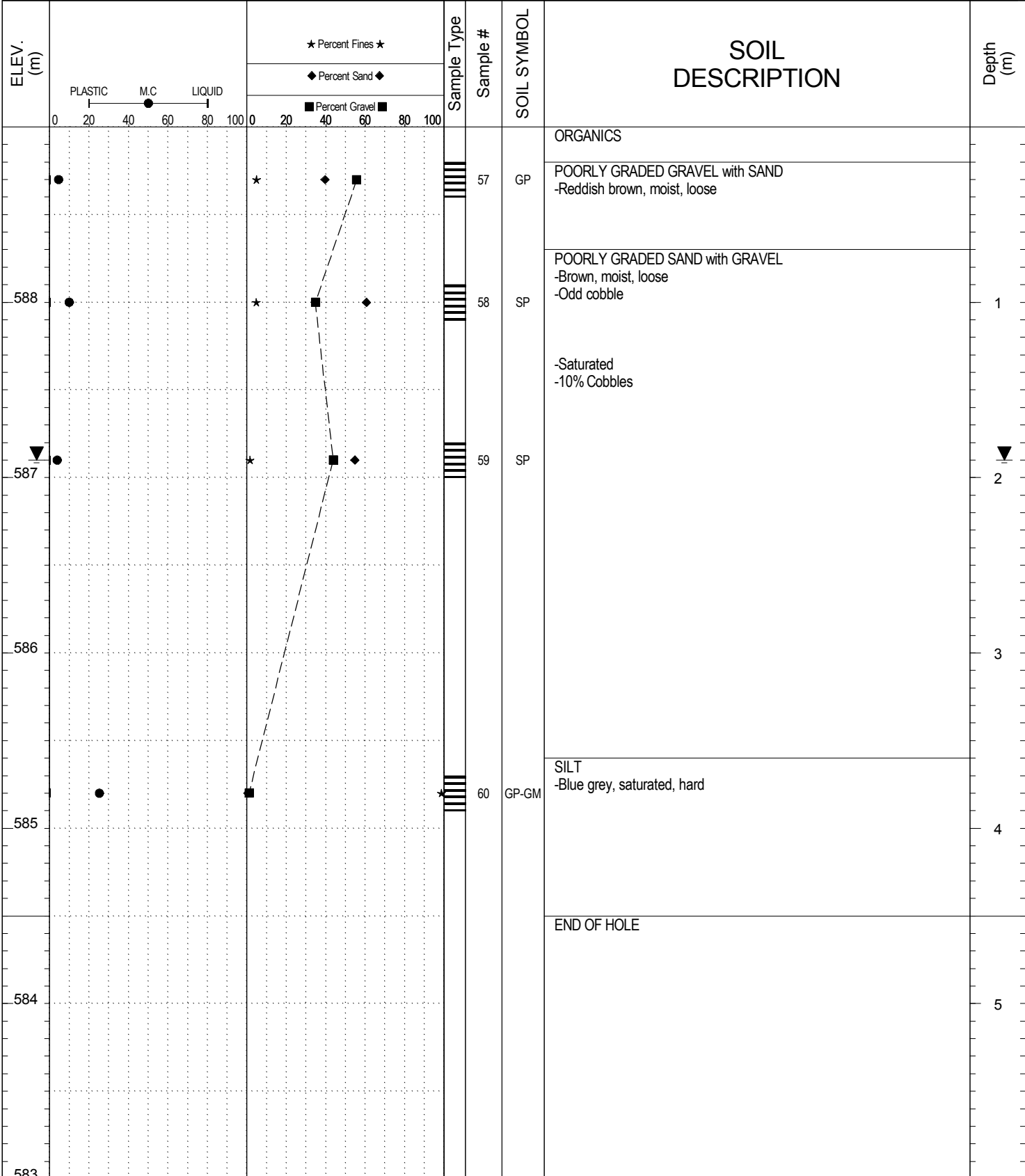


Highways and Public Works
Transportation Engineering Branch

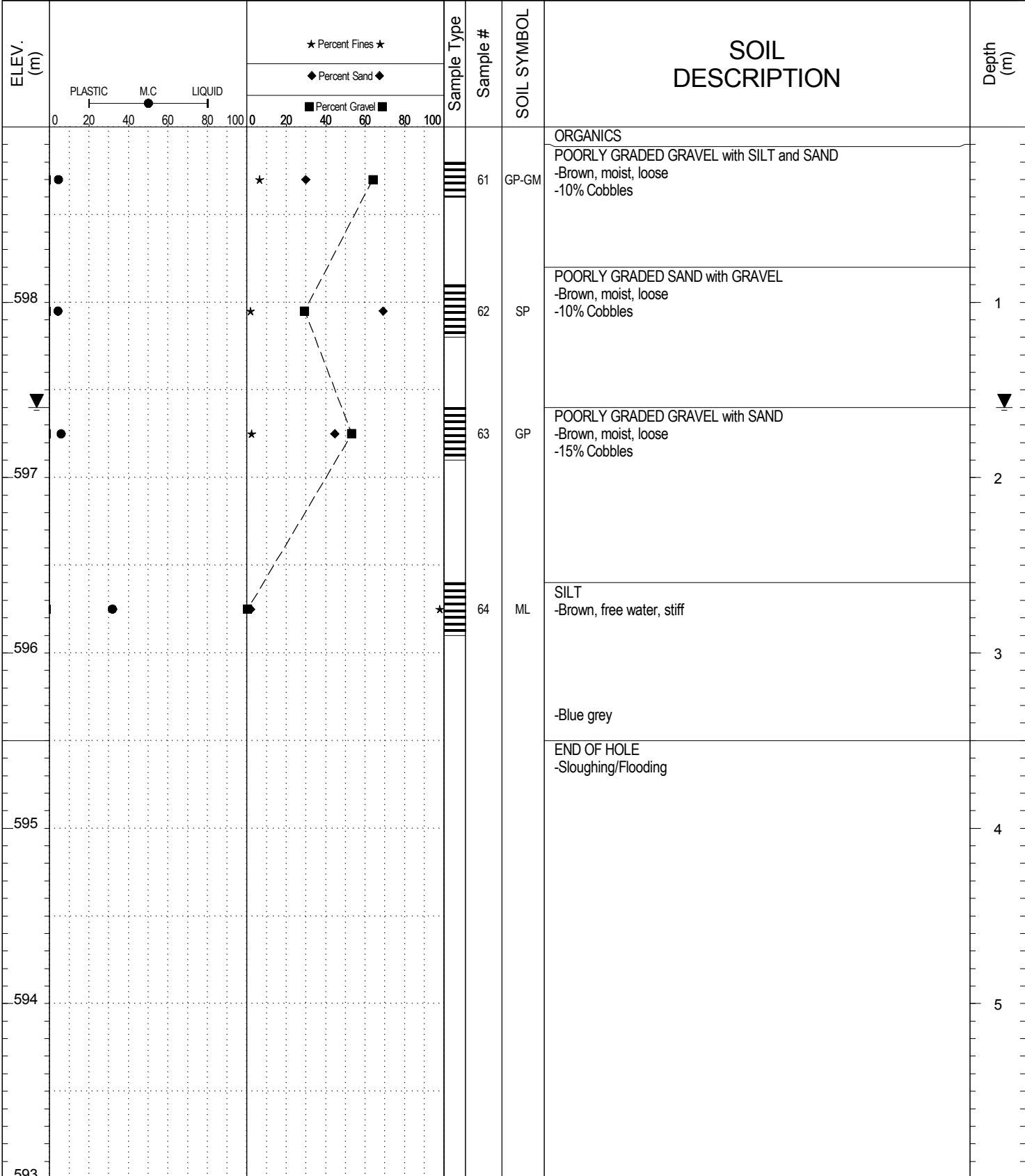
| | |
|-----------------------------------|------------------------------------|
| LOGGED BY: R.Stilwell | Termination Depth: 4m |
| REVIEWED BY: M. Idrees | Complete: 10/13/2013 10:25:00 AM |
| PROJECT ENGINEER: Muhammad Idrees | Pit #: unassigned Page 1 of 1 |

SAMPLE TYPE **■** RETURN **□** UNDISTURBED **▨** AUGER **▧** BULK **▩** TUBE **▬** CORE

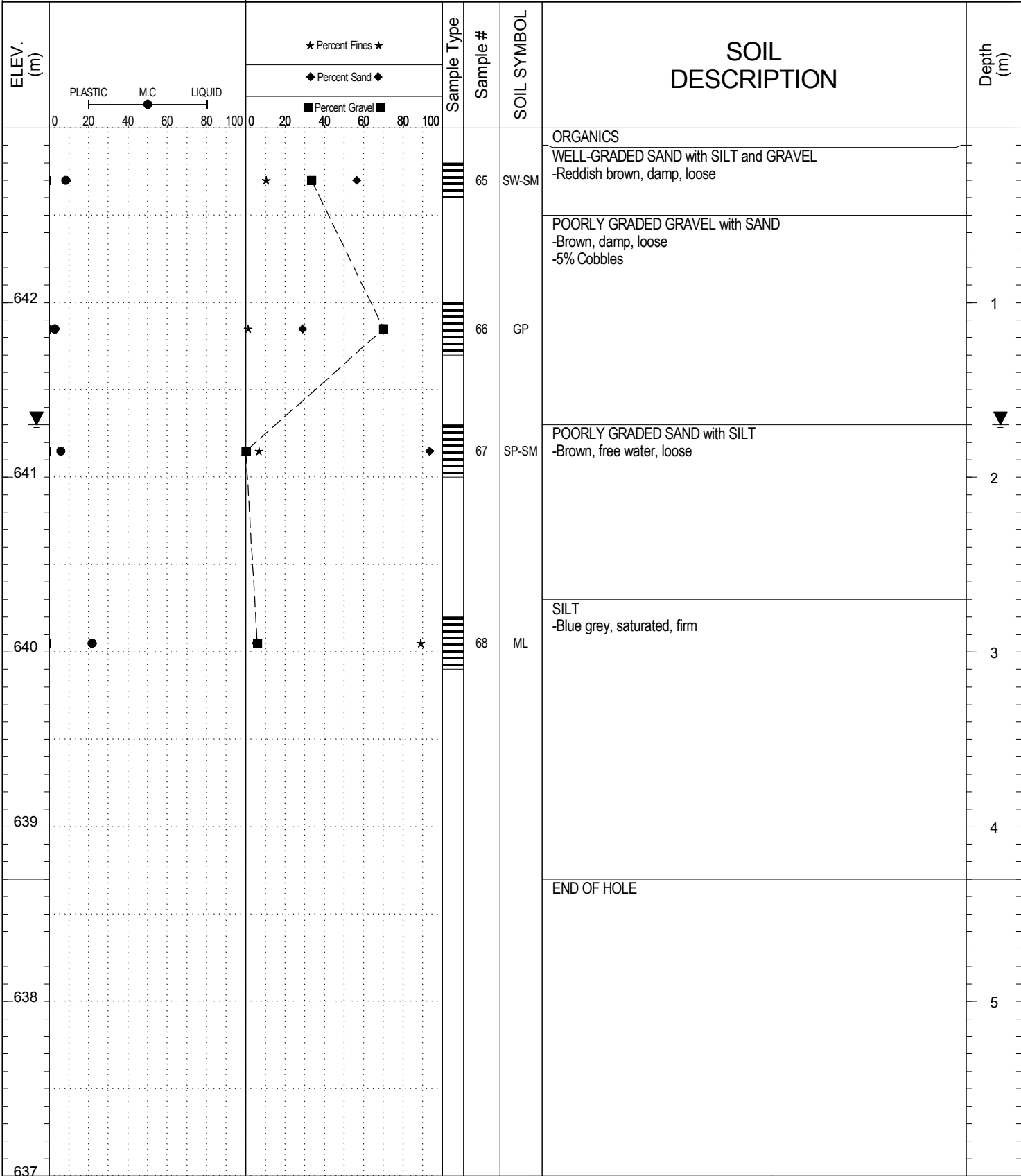


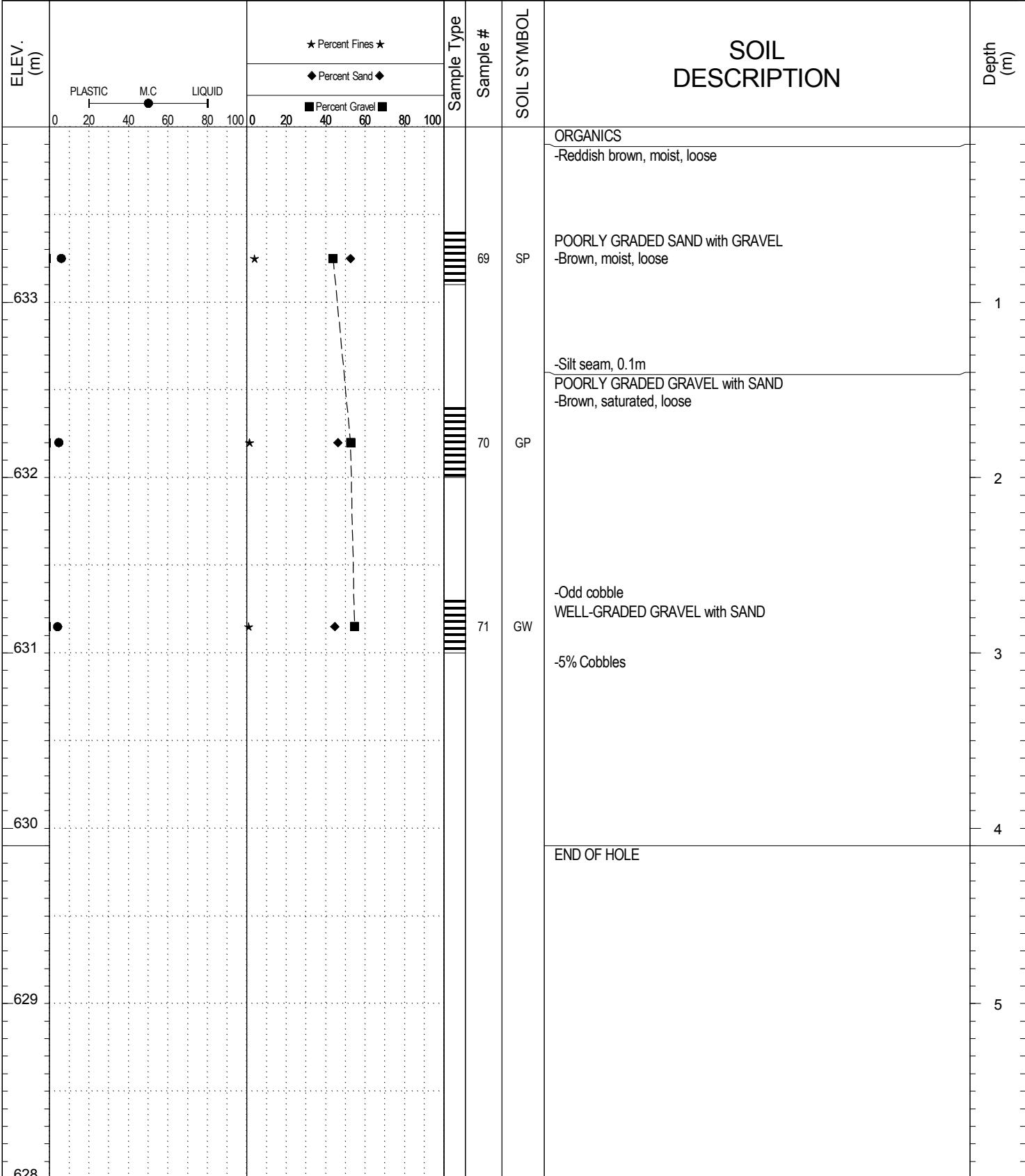


SAMPLE TYPE **■** RETURN **□** UNDISTURBED **▨** AUGER **▧** BULK **▩** TUBE **▬** CORE

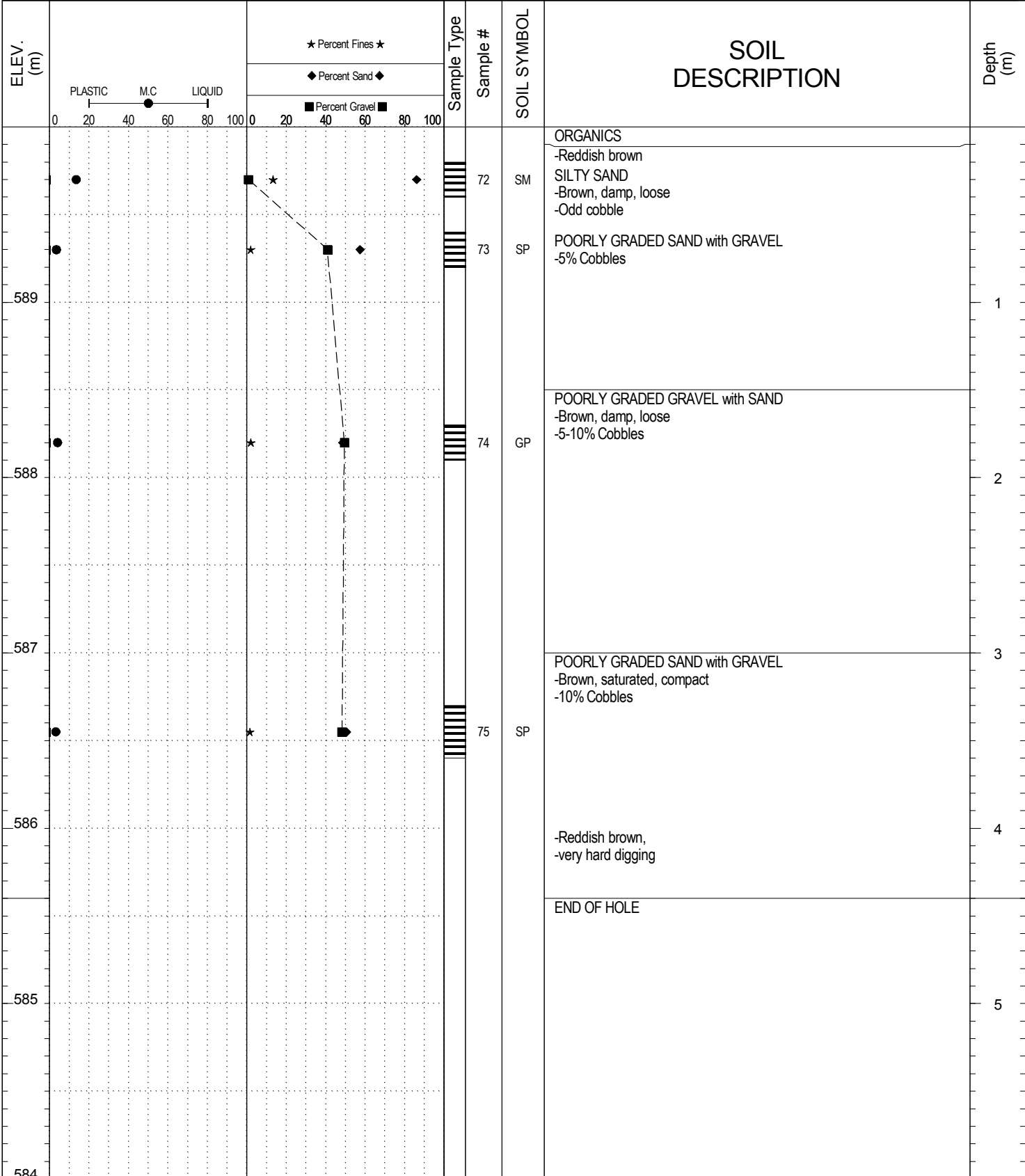


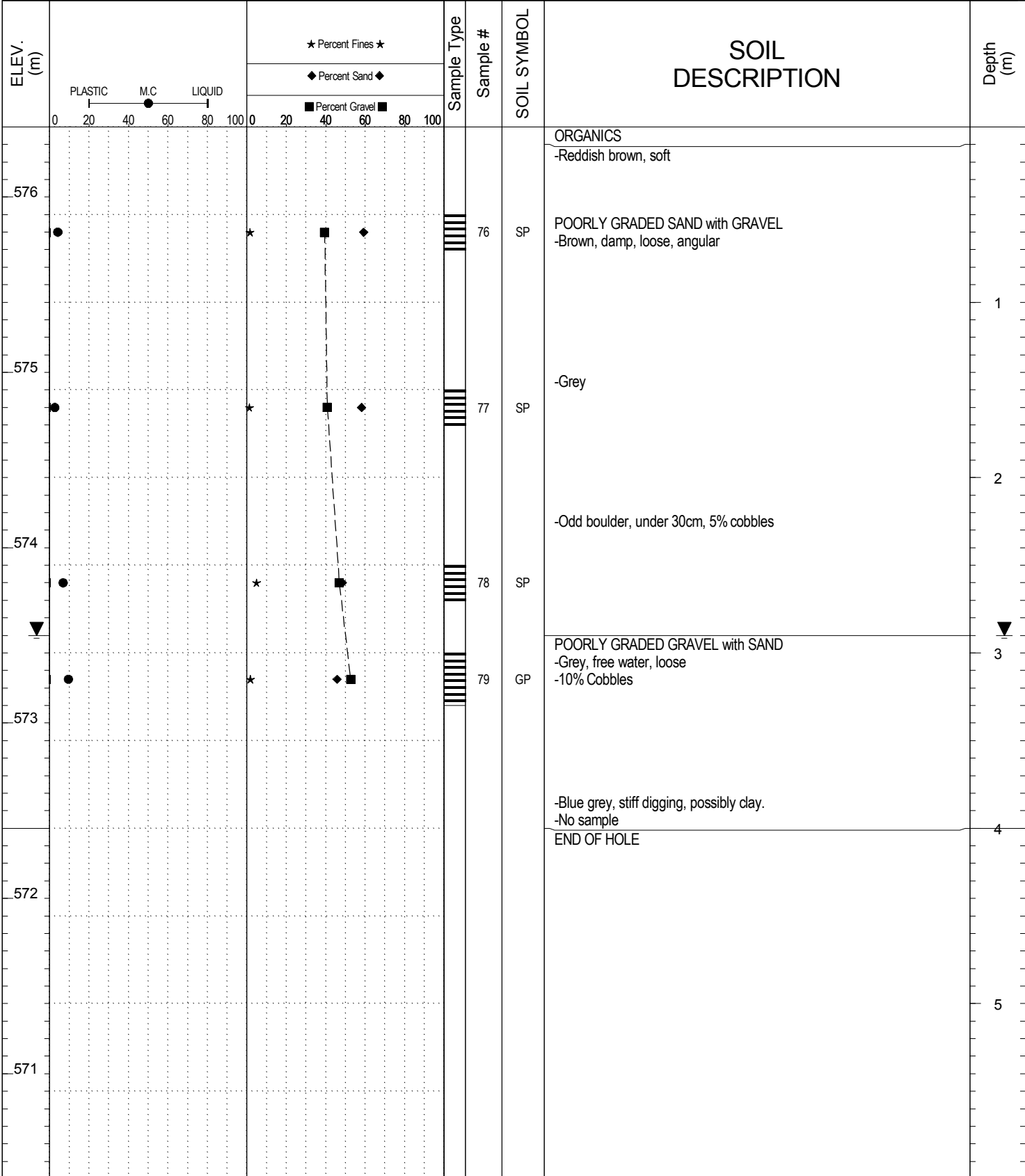
SAMPLE TYPE RETURN UNDISTURBED AUGER BULK TUBE CORE





SAMPLE TYPE RETURN UNDISTURBED AUGER BULK TUBE CORE



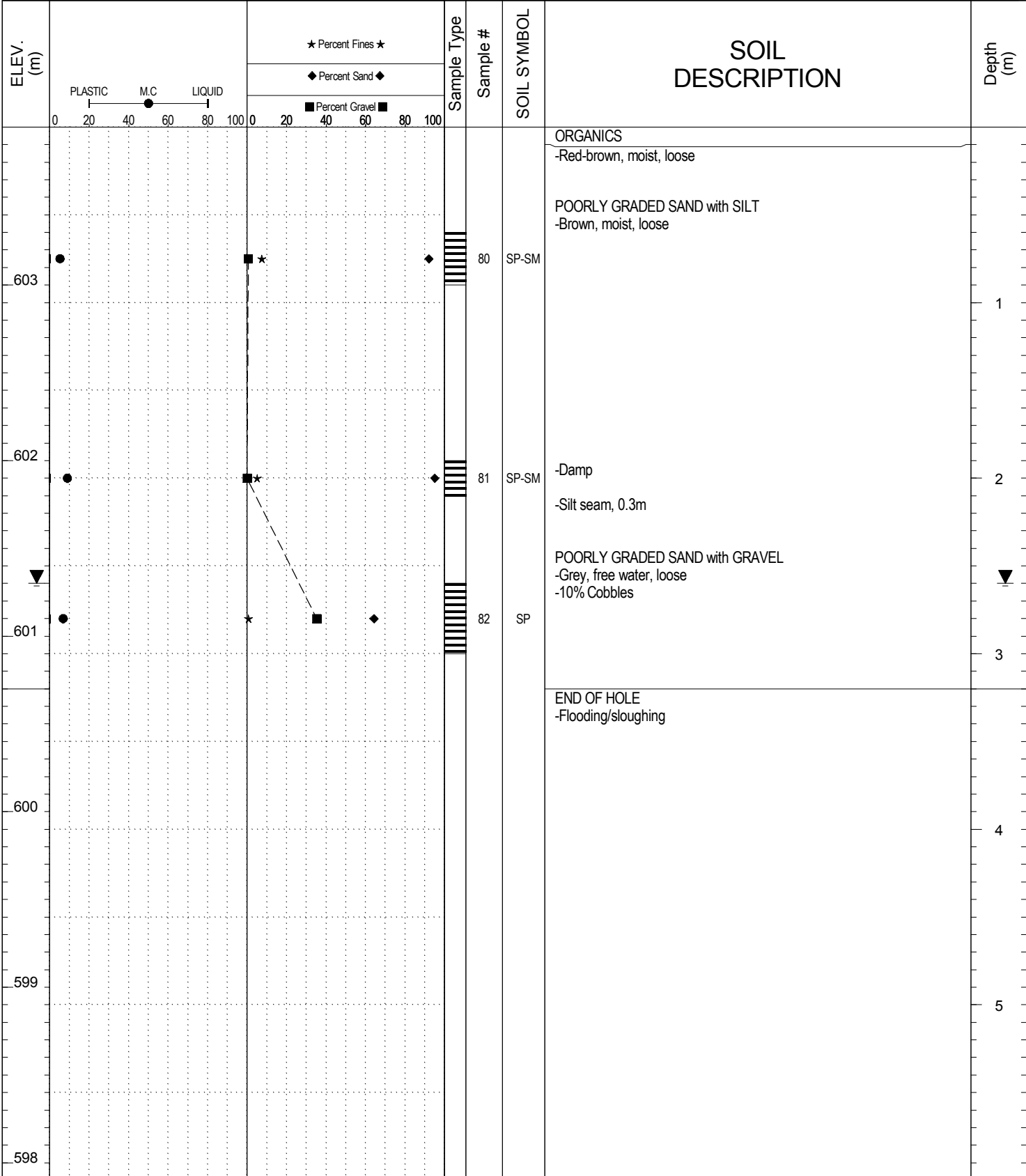


SUBSURFACE EXPLORATION AND TEST REPORT Campbell Highway Gravel Search km 70-90 SOURCE/TP#: 817-4614

J.Magun Campbell Highway Gravel Search km 70-90, km 71 RHS, PROJECT NO: 552-202104-2035-0661-5

Hitachi 200 LC Coordinates: Z9 N6716907m E490972.5m ELEVATION: 603.9m

SAMPLE TYPE RETURN UNDISTURBED AUGER BULK TUBE CORE



**Highways and Public Works
Transportation Engineering Branch**

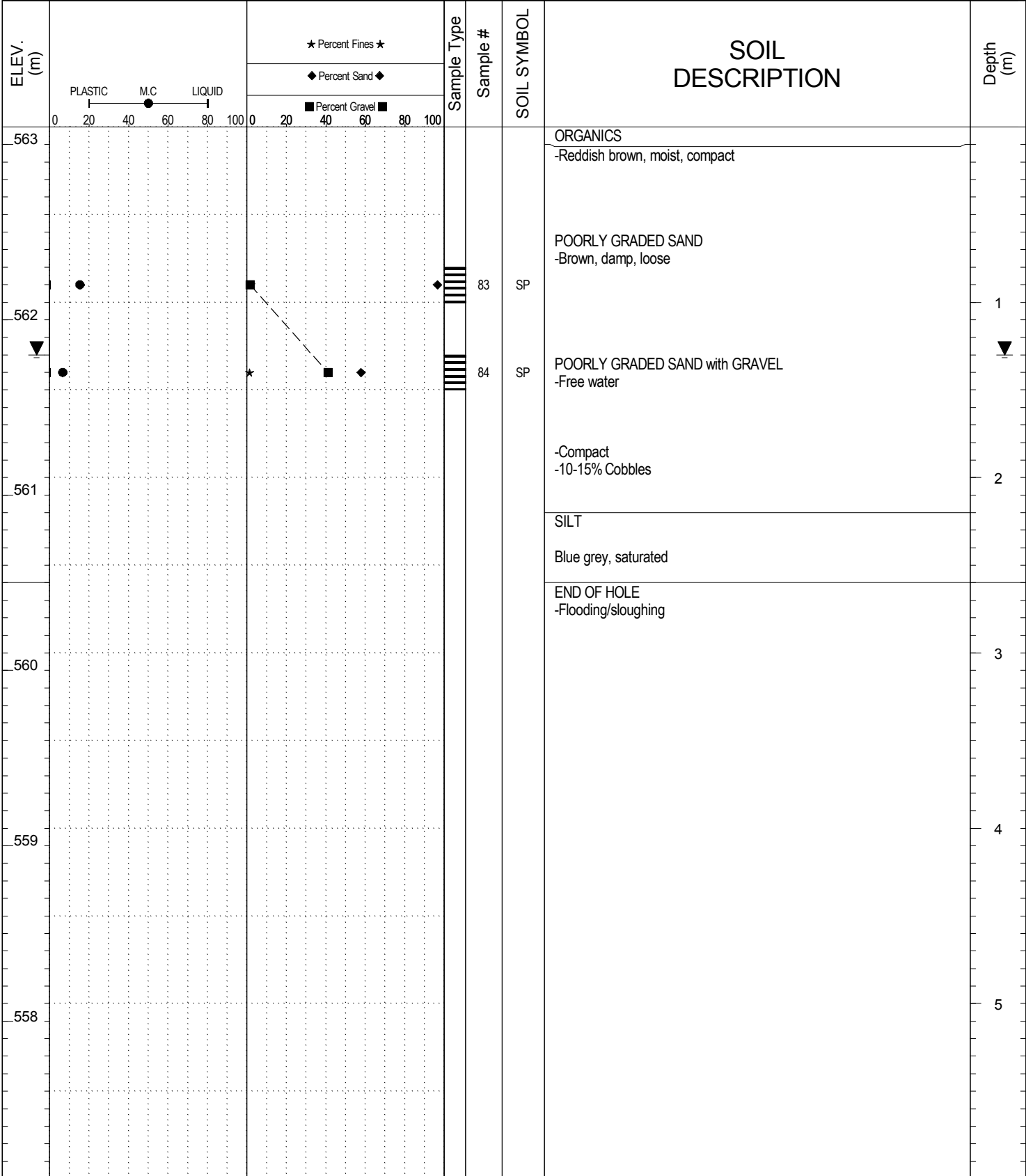
| | |
|-----------------------------------|------------------------------------|
| LOGGED BY: R.Stilwell | Termination Depth: 3.2m |
| REVIEWED BY: M. Idrees | Complete: 10/15/2013 12:10:00 PM |
| PROJECT ENGINEER: Muhammad Idrees | Pit #: unassigned Page 1 of 1 |

SUBSURFACE EXPLORATION AND TEST REPORT Campbell Highway Gravel Search km 70-90 SOURCE/TP#: 817-4616

J.Magun Campbell Highway Gravel Search km 70-90, km 71 RHS, PROJECT NO: 552-202104-2035-0661-5

Hitachi 200 LC Coordinates: Z9 N6716825.5m E490995.7m ELEVATION: 563.1m

SAMPLE TYPE RETURN UNDISTURBED AUGER BULK TUBE CORE



**Highways and Public Works
Transportation Engineering Branch**

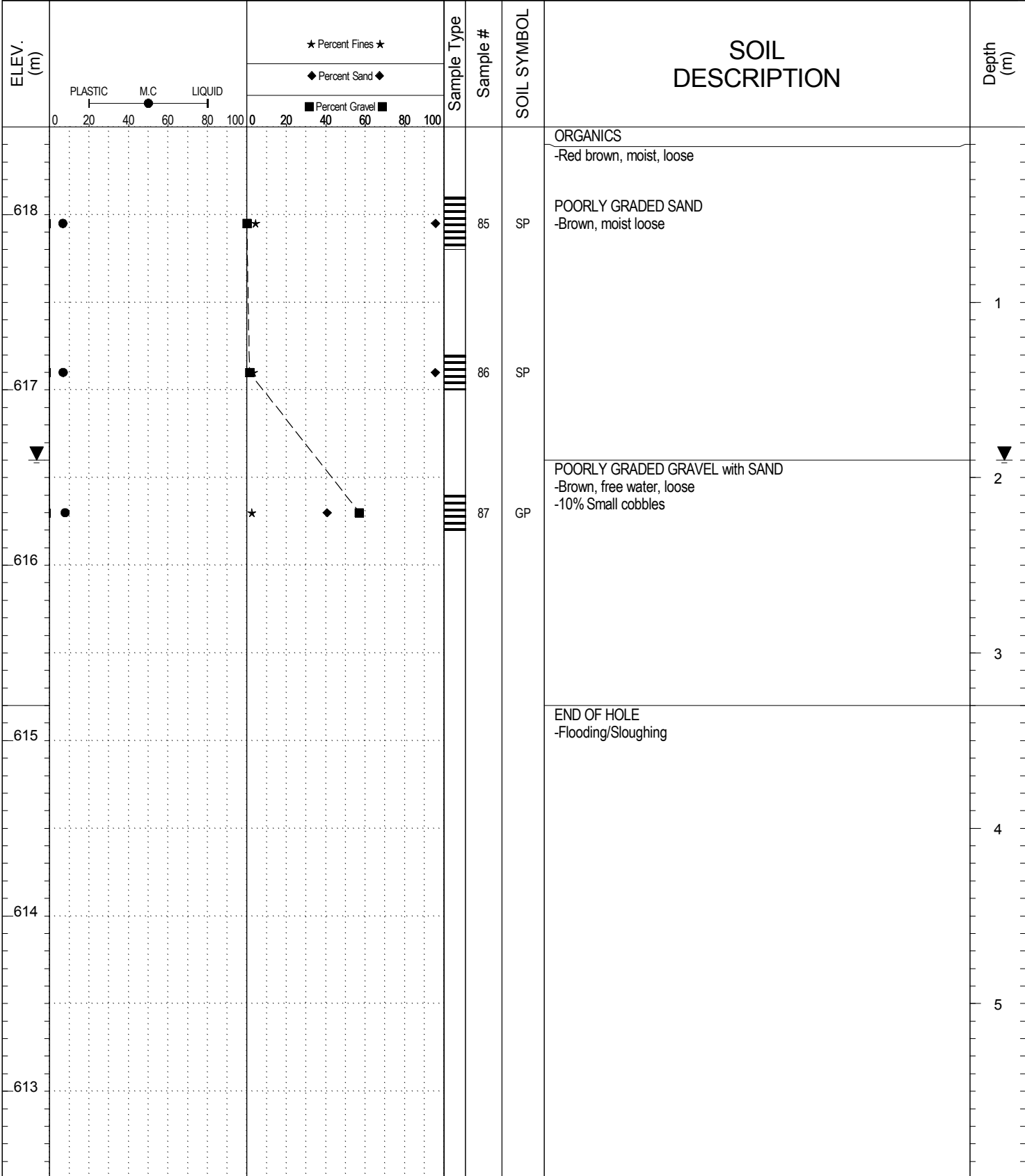
| | |
|-----------------------------------|------------------------------------|
| LOGGED BY: R.Stilwell | Termination Depth: 2.6m |
| REVIEWED BY: M. Idrees | Complete: 10/15/2013 1:30:00 PM |
| PROJECT ENGINEER: Muhammad Idrees | Pit #: unassigned Page 1 of 1 |

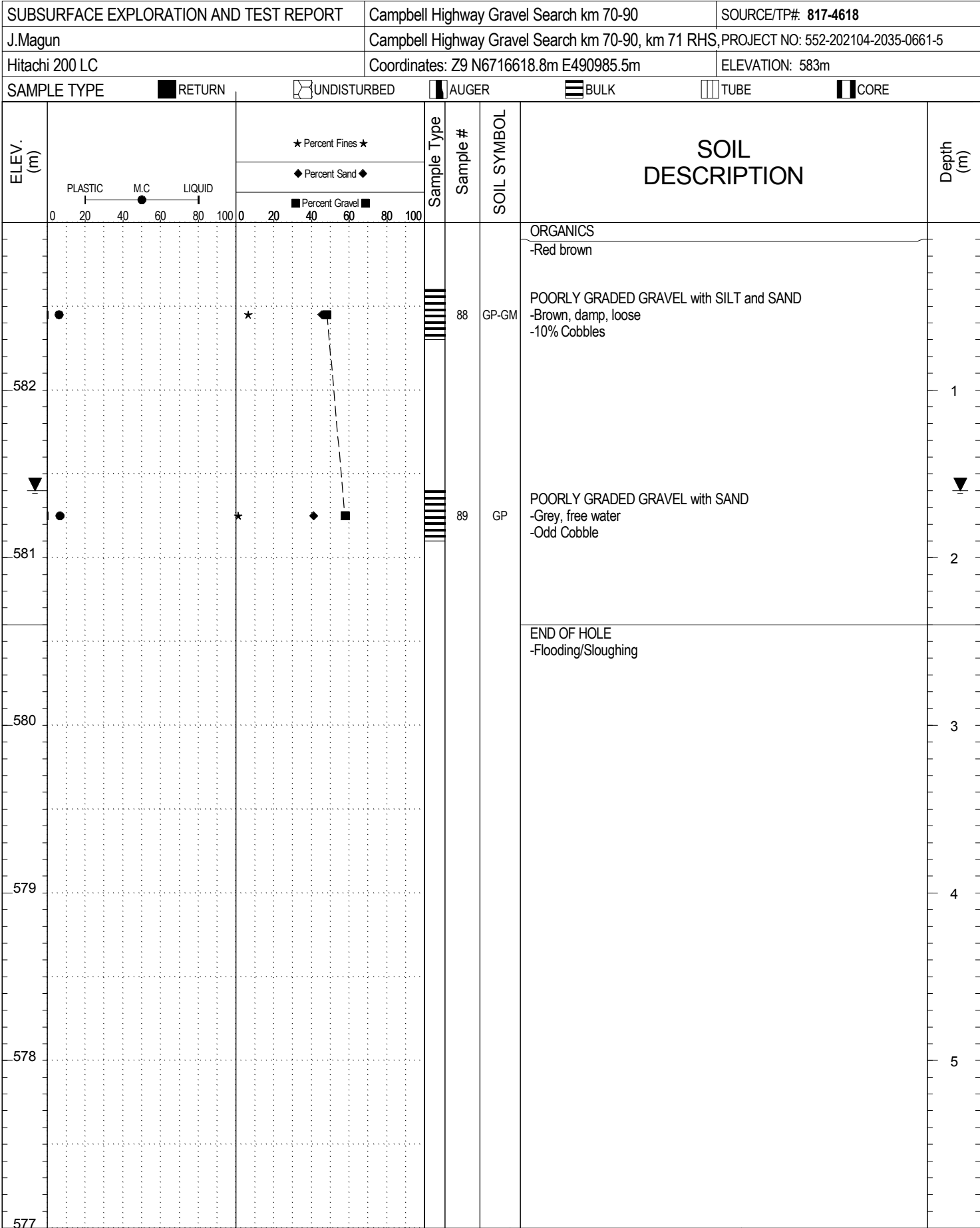
SUBSURFACE EXPLORATION AND TEST REPORT Campbell Highway Gravel Search km 70-90 SOURCE/TP#: 817-4617

J.Magun Campbell Highway Gravel Search km 70-90, km 71 RHS, PROJECT NO: 552-202104-2035-0661-5

Hitachi 200 LC Coordinates: Z9 N6716685.3m E490987.6m ELEVATION: 618.5m

SAMPLE TYPE RETURN UNDISTURBED AUGER BULK TUBE CORE



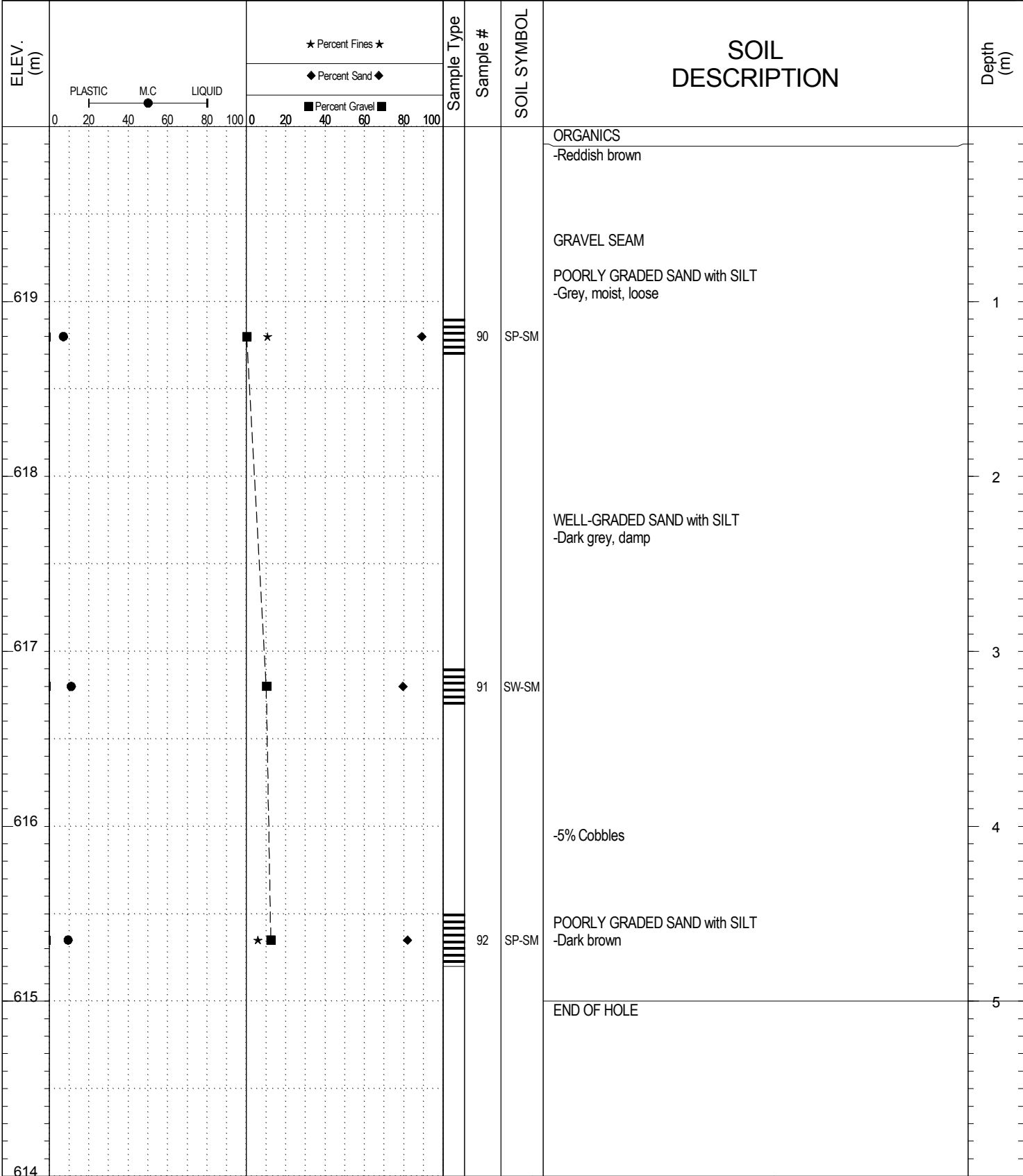


SUBSURFACE EXPLORATION AND TEST REPORT Campbell Highway Gravel Search km 70-90 SOURCE/TP#: 817-4619

J.Magun Campbell Highway Gravel Search km 70-90, km 71 RHS, PROJECT NO: 552-202104-2035-0661-5

Hitachi 200 LC Coordinates: Z9 N6717050.8m E490818.6m ELEVATION: 620m

SAMPLE TYPE RETURN UNDISTURBED AUGER BULK TUBE CORE

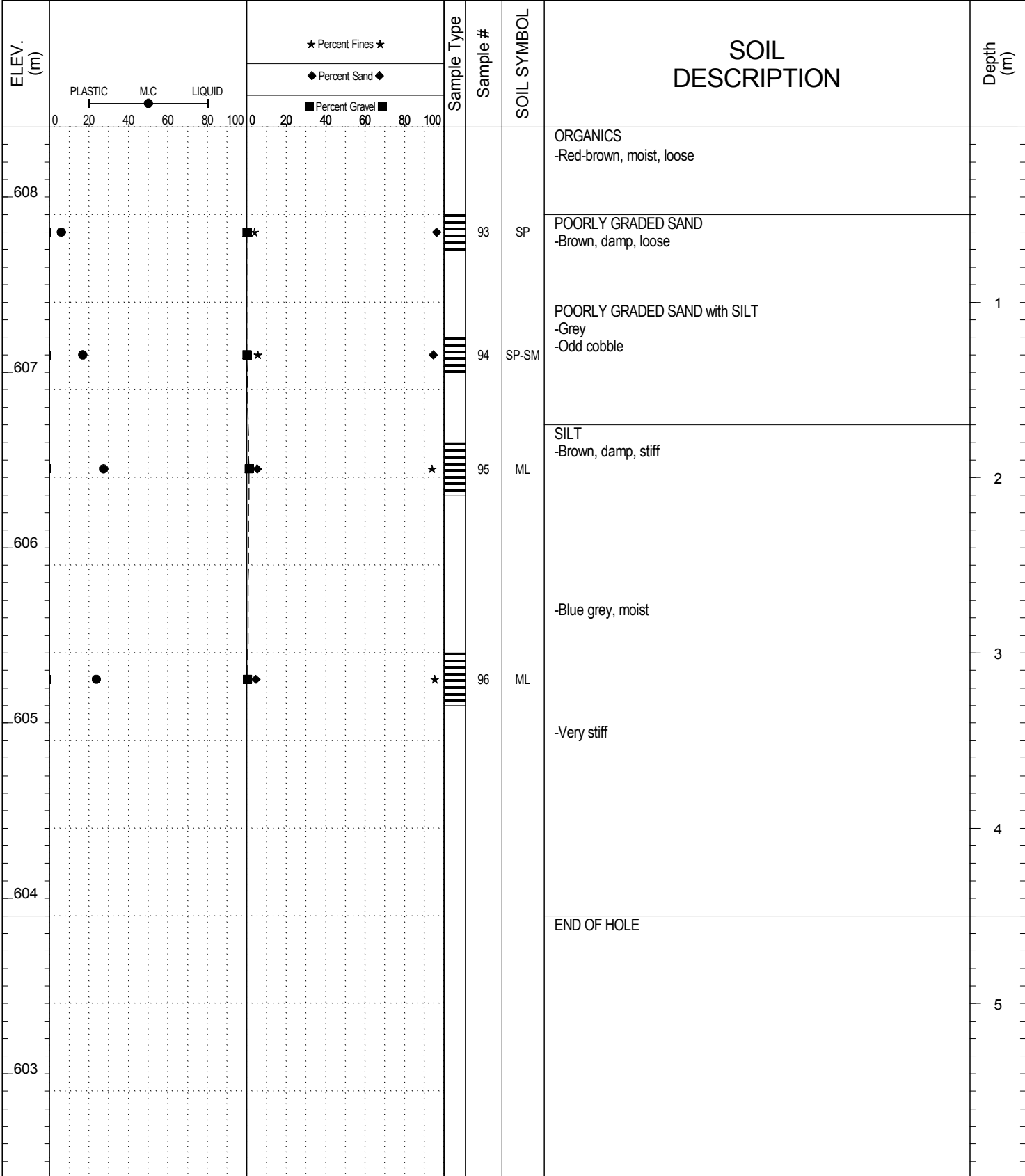


SUBSURFACE EXPLORATION AND TEST REPORT Campbell Highway Gravel Search km 70-90 SOURCE/TP#: 817-4620

J.Magun Campbell Highway Gravel Search km 70-90, km 71 RHS, PROJECT NO: 552-202104-2035-0661-5

Hitachi 200 LC Coordinates: Z9 N6717031.5m E490662.2m ELEVATION: 608.4m

SAMPLE TYPE RETURN UNDISTURBED AUGER BULK TUBE CORE

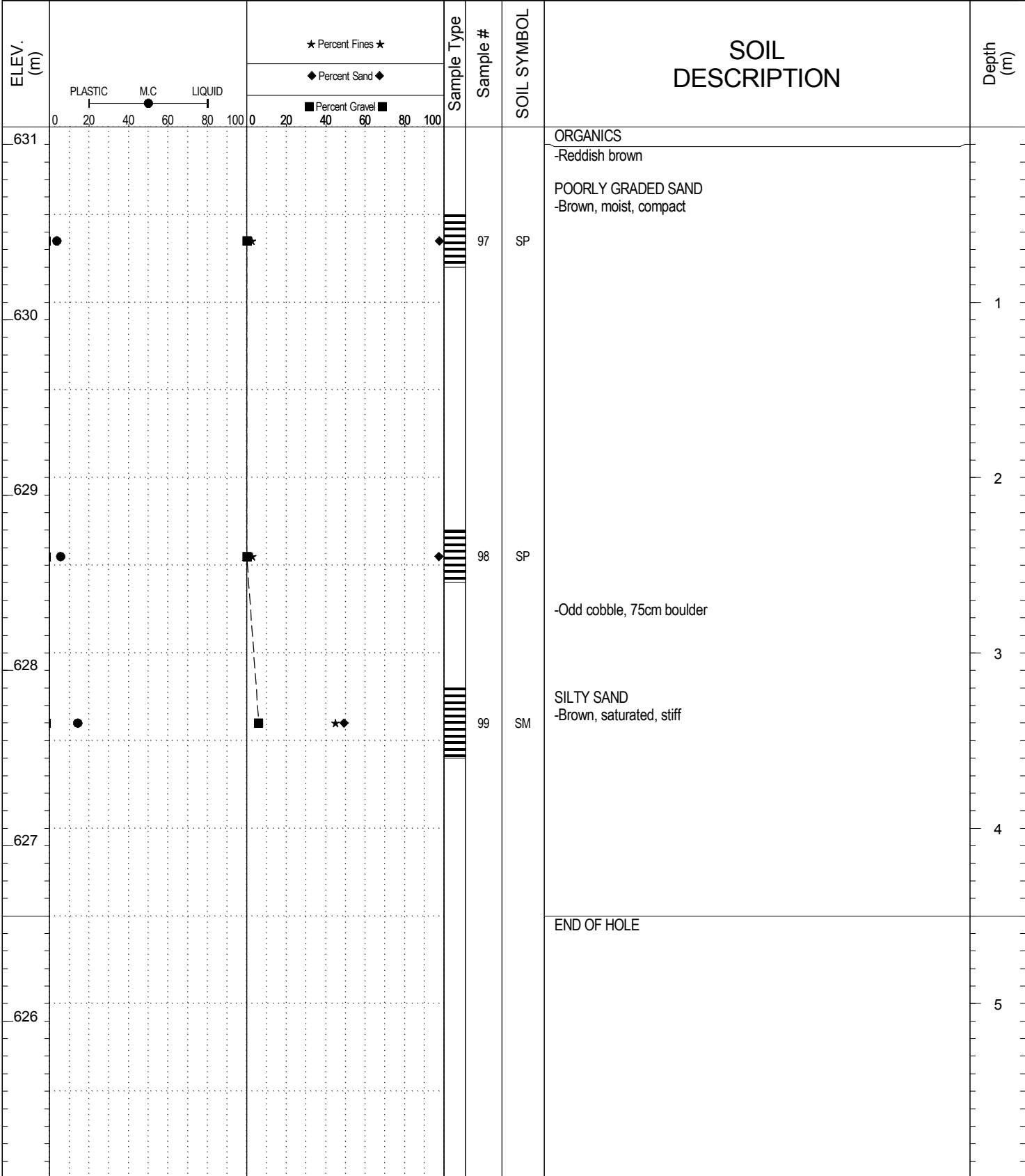


SUBSURFACE EXPLORATION AND TEST REPORT Campbell Highway Gravel Search km 70-90 SOURCE/TP#: 818-4621

J.Magun Campbell Highway Gravel Search km 70-90, km 71 RHS, PROJECT NO: 552-202104-2035-0661-5

Hitachi 200 LC Coordinates: Z9 N6717084.8m E490592.6m ELEVATION: 631.1m

SAMPLE TYPE RETURN UNDISTURBED AUGER BULK TUBE CORE



| SUBSURFACE EXPLORATION AND TEST REPORT | | Campbell Highway Gravel Search km 70-90 | SOURCE/TP#: 818-4622 | | | | | | | | |
|--|---------|---|------------------------------------|---------------------------------|--------------|----------------|-------------|----------|-------------|---|-----------|
| J.Magun | | Campbell Highway Gravel Search km 70-90, km 71 RHS, | PROJECT NO: 552-202104-2035-0661-5 | | | | | | | | |
| Hitachi 200 LC | | Coordinates: Z9 N6717434.8m E490559m | ELEVATION: 614m | | | | | | | | |
| SAMPLE TYPE | RETURN | UNDISTURBED | AUGER | | | | | | | | |
| | | | BULK | | | | | | | | |
| | | | TUBE | | | | | | | | |
| | | | CORE | | | | | | | | |
| ELEV. (m) | PLASTIC | M.C | LIQUID | Percent Fines | Percent Sand | Percent Gravel | Sample Type | Sample # | SOIL SYMBOL | SOIL DESCRIPTION | Depth (m) |
| 613 | | | | ★ | ◆ | ■ | | 100 | SP | ORGANICS -Reddish brown, moist POORLY GRADED SAND -Brown, moist, loose | 1 |
| 612 | | | | | | | | 101 | SP | -Grayish brown | 2 |
| 611 | | | | | | | | | | | 3 |
| 610 | | | | | | | | 102 | SP | | 4 |
| 609 | | | | | | | | | | END OF HOLE | 5 |
| 608 | | | | | | | | | | | |
| | | LOGGED BY: R.Stilwell | | Termination Depth: 4.1m | | | | | | | |
| | | REVIEWED BY: M. Idrees | | Complete: 10/16/2013 9:55:00 AM | | | | | | | |
| | | PROJECT ENGINEER: Muhammad Idrees | | Pit #: unassigned Page 1 of 1 | | | | | | | |

SUBSURFACE EXPLORATION AND TEST REPORT Campbell Highway Gravel Search km 70-90 SOURCE/TP#: 818-4623

J.Magun Campbell Highway Gravel Search km 70-90, km 71 RHS, PROJECT NO: 552-202104-2035-0661-5

Hitachi 200 LC Coordinates: Z9 N6717284.5m E490588.2m ELEVATION: 638.3m

SAMPLE TYPE RETURN UNDISTURBED AUGER BULK TUBE CORE

