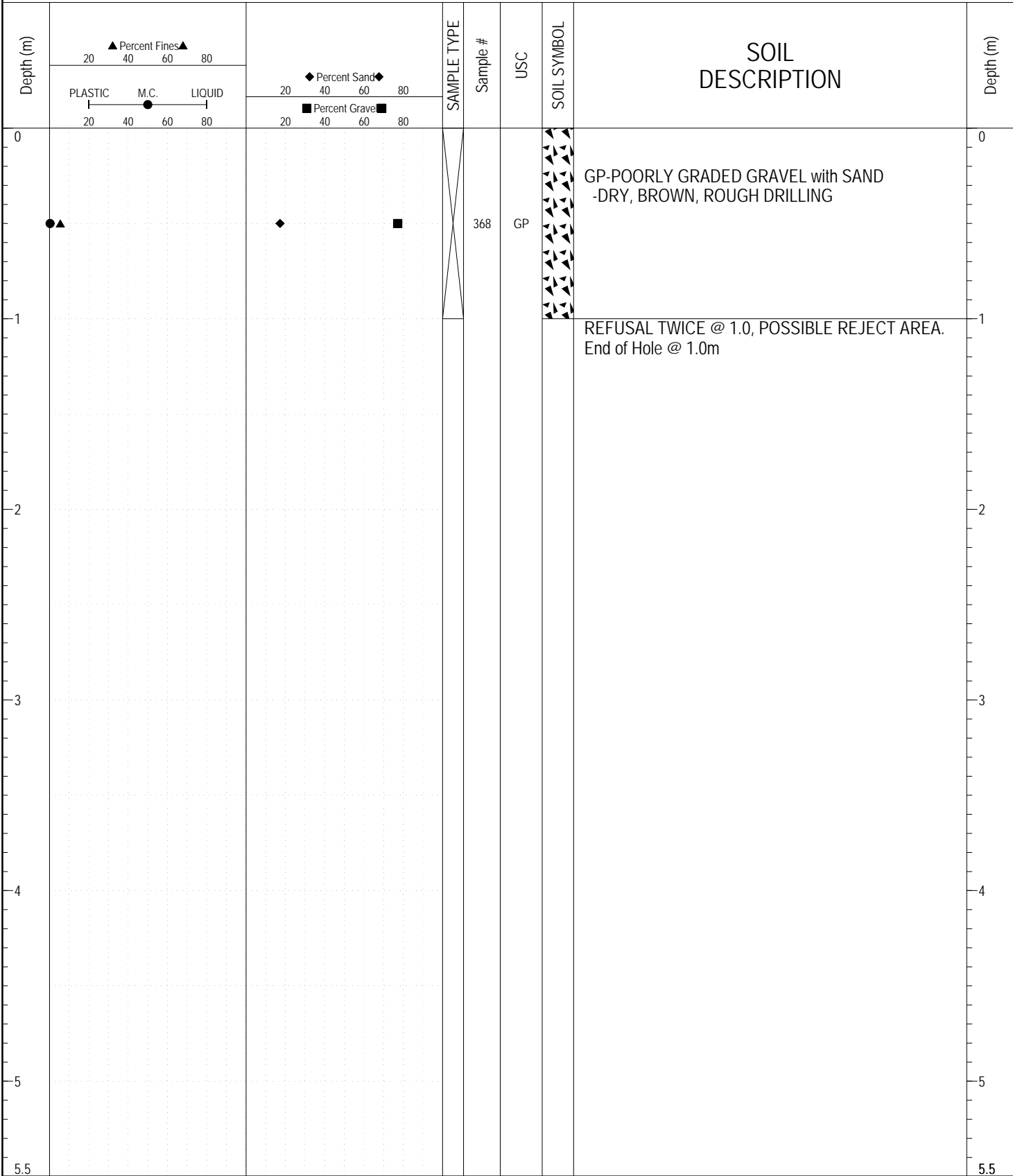


SUBSURFACE EXPLORATION AND TEST REPORT	KLONDIKE HWY GRAVEL SEARCH	BOREHOLE NO: 89-141
ENGINEERING CAPITAL	KM 196 K/H RHS	PROJECT NO: 02-0196 RHS
CME-750 6" AUGER	LOCATION: SEE PLAN	ELEVATION:

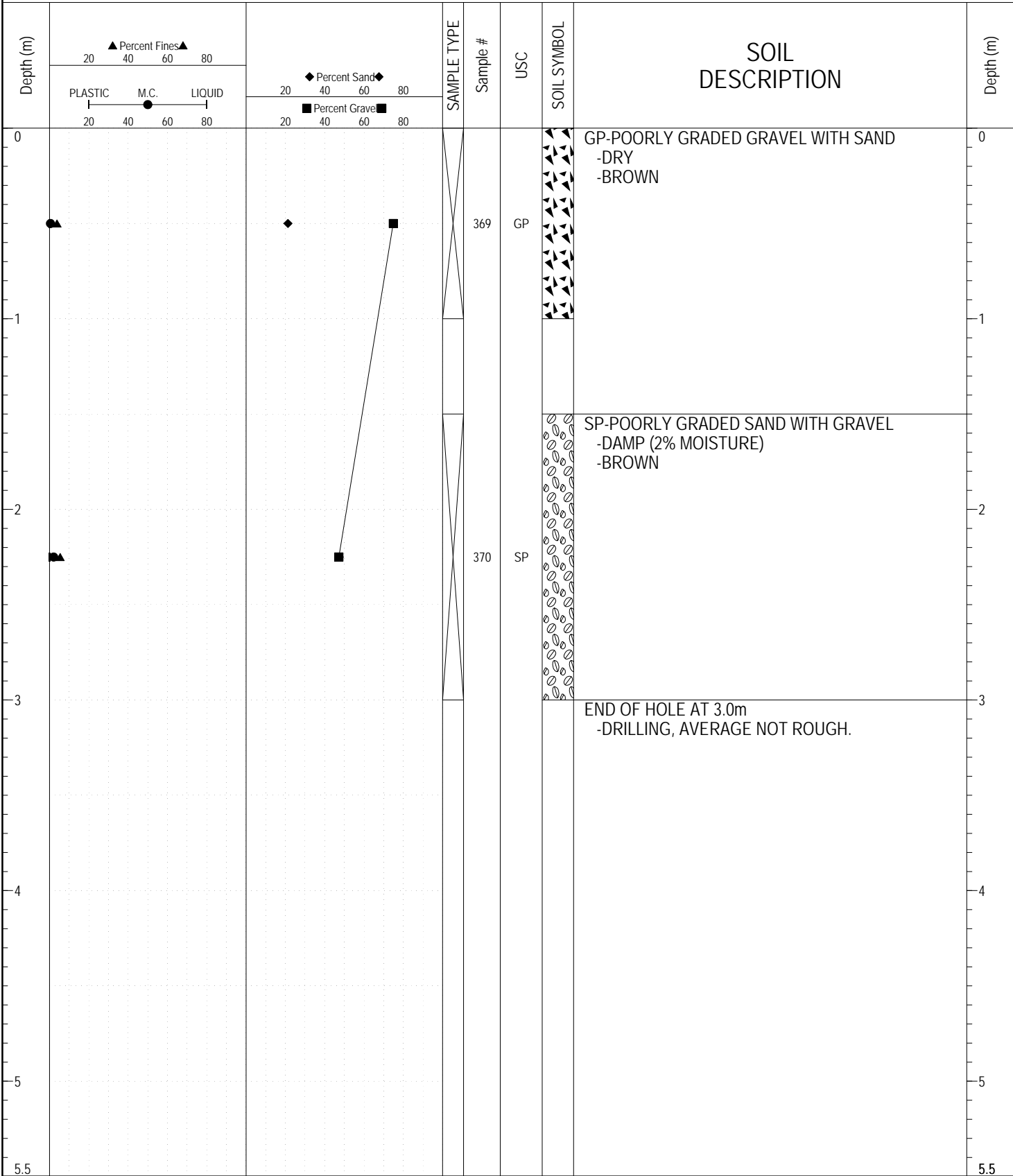
SAMPLE TYPE RETURN S.P.T. Auger BULK TUBE CORE



ESE IMPORT LOG GRAVEL 1989.GPJ YTG.GDT 7/16/17

SUBSURFACE EXPLORATION AND TEST REPORT	KLONDIKE HWY GRAVEL SEARCH	BOREHOLE NO: 89-142
ENGINEERING CAPITAL	KM 196 K/H RHS	PROJECT NO: 02-0196 RHS
CME - 750 6" AUGER	LOCATION: SEE PLAN	ELEVATION:

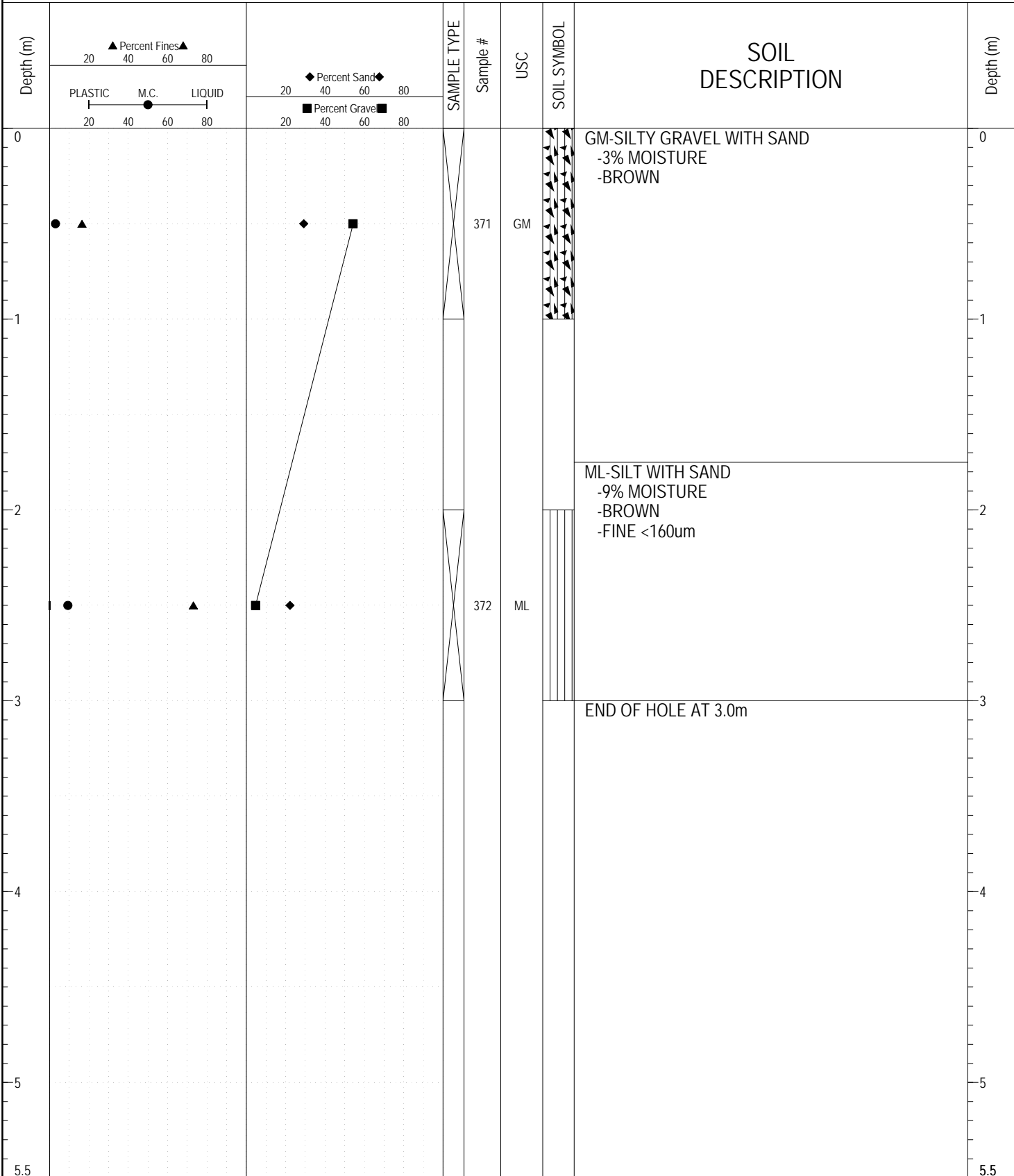
SAMPLE TYPE RETURN S.P.T. Auger BULK TUBE CORE



ESE IMPORT LOG GRAVEL 1989.GPJ YTG.GDT 7/16/17

SUBSURFACE EXPLORATION AND TEST REPORT	KLONDIKE HWY GRAVEL SEARCH	BOREHOLE NO: 89-143
ENGINEERING CAPITAL	KM 196 K/H RHS	PROJECT NO: 02-0196 RHS
CME - 750 6: AUGER	LOCATION: SEE PLAN	ELEVATION:

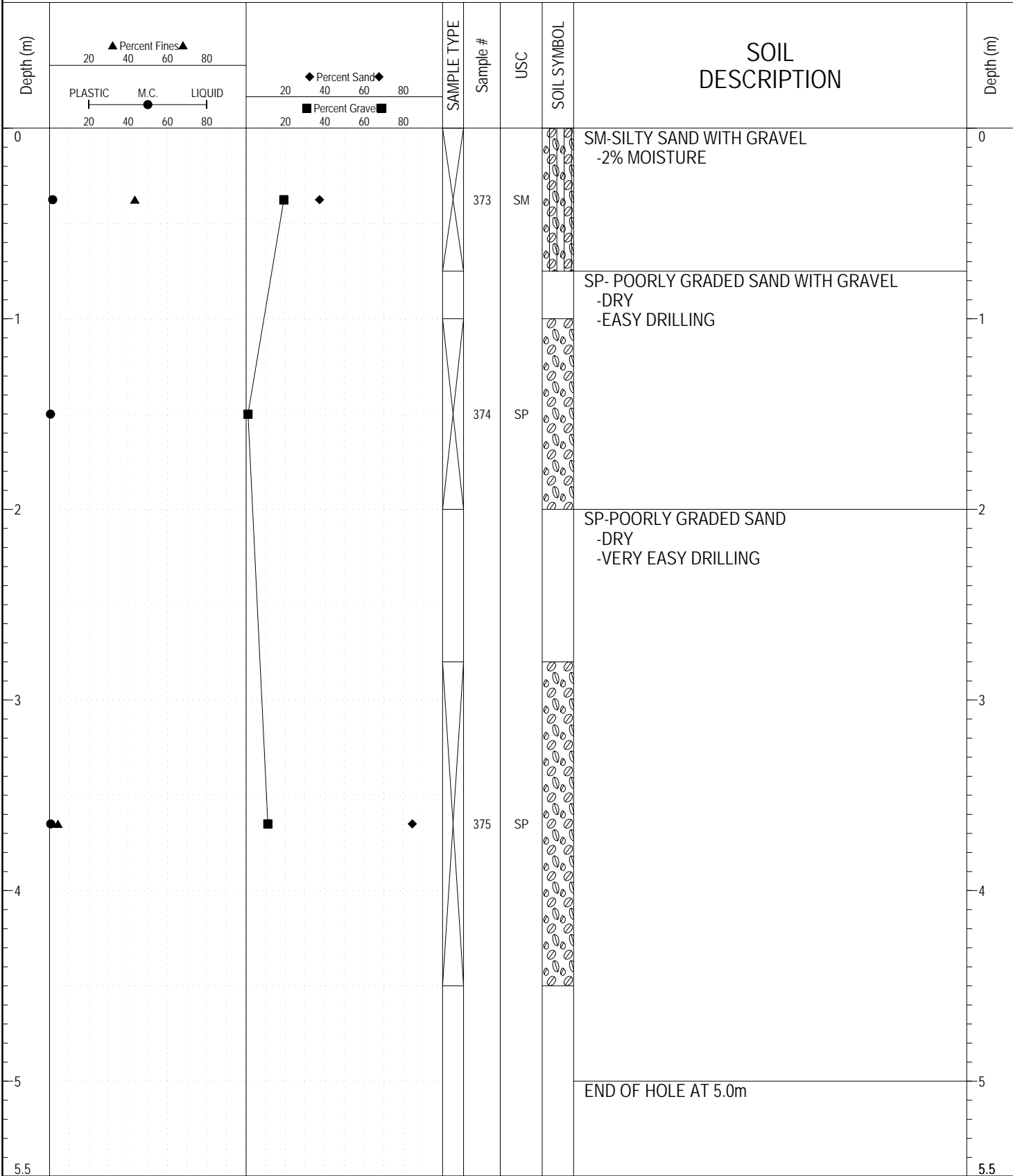
SAMPLE TYPE RETURN S.P.T. Auger BULK TUBE CORE



ESE IMPORT LOG GRAVEL 1989.GPJ YTG.GDT 7/16/17

SUBSURFACE EXPLORATION AND TEST REPORT	KLONDIKE HWY GRAVEL SEARCH	BOREHOLE NO: 89-144
ENGINEERING CAPITAL	KM 196 K/H RHS	PROJECT NO: 02-0196 RHS
CME - 750 6" AUGER	LOCATION: SEE PLAN	ELEVATION:

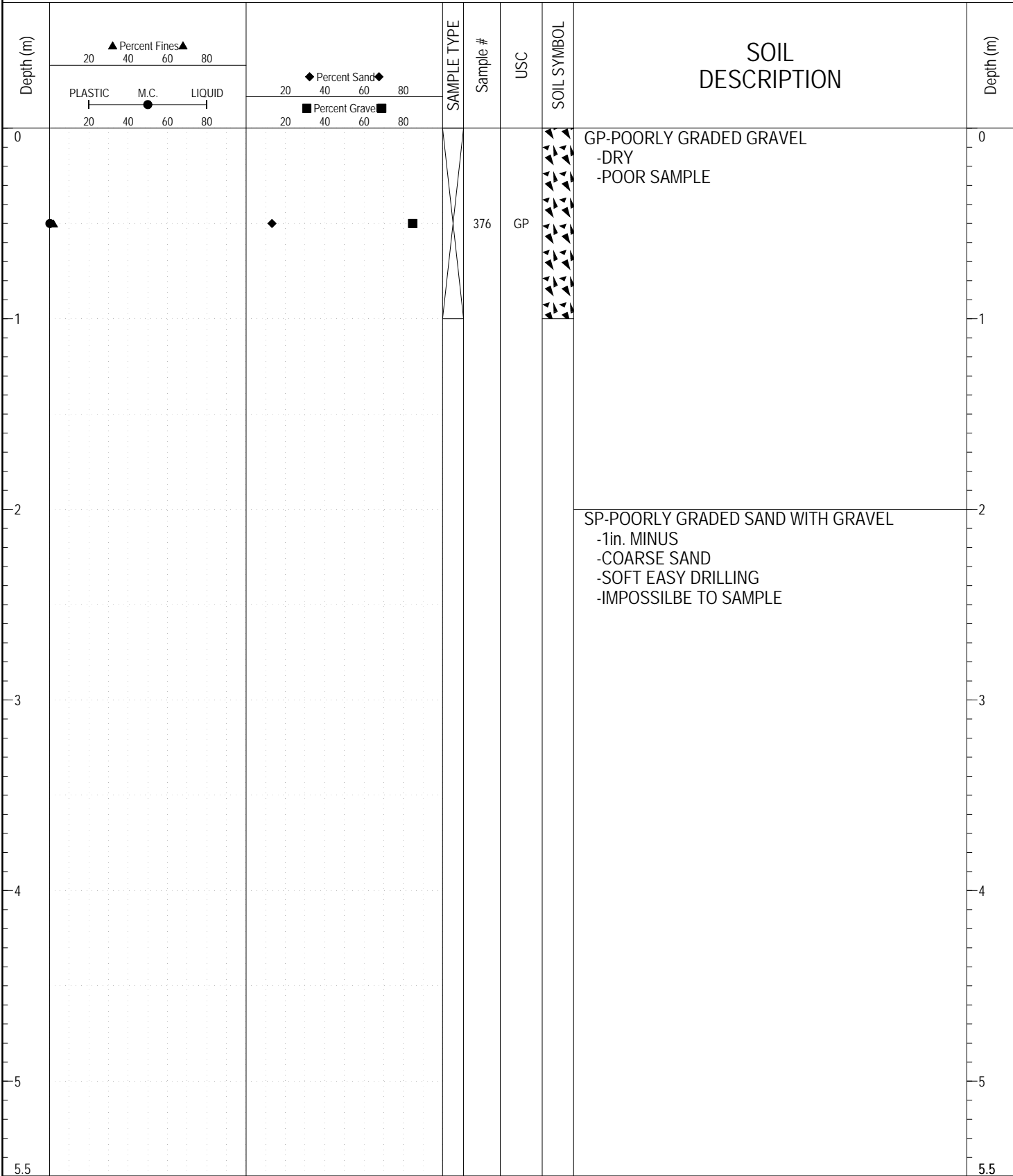
SAMPLE TYPE RETURN S.P.T. Auger BULK TUBE CORE



ESE IMPORT LOG GRAVEL 1989.GPJ YTG.GDT 7/16/17

SUBSURFACE EXPLORATION AND TEST REPORT	KLONDIKE HWY GRAVEL SEARCH	BOREHOLE NO: 89-145
ENGINEERING CAPITAL	KM 196 K/H RHS	PROJECT NO: 02-0196 RHS
CME - 750 6" AUGER	LOCATION: SEE PLAN	ELEVATION:

SAMPLE TYPE RETURN S.P.T. Auger BULK TUBE CORE



ESE IMPORT LOG GRAVEL 1989.GPJ YTG.GDT 7/16/17

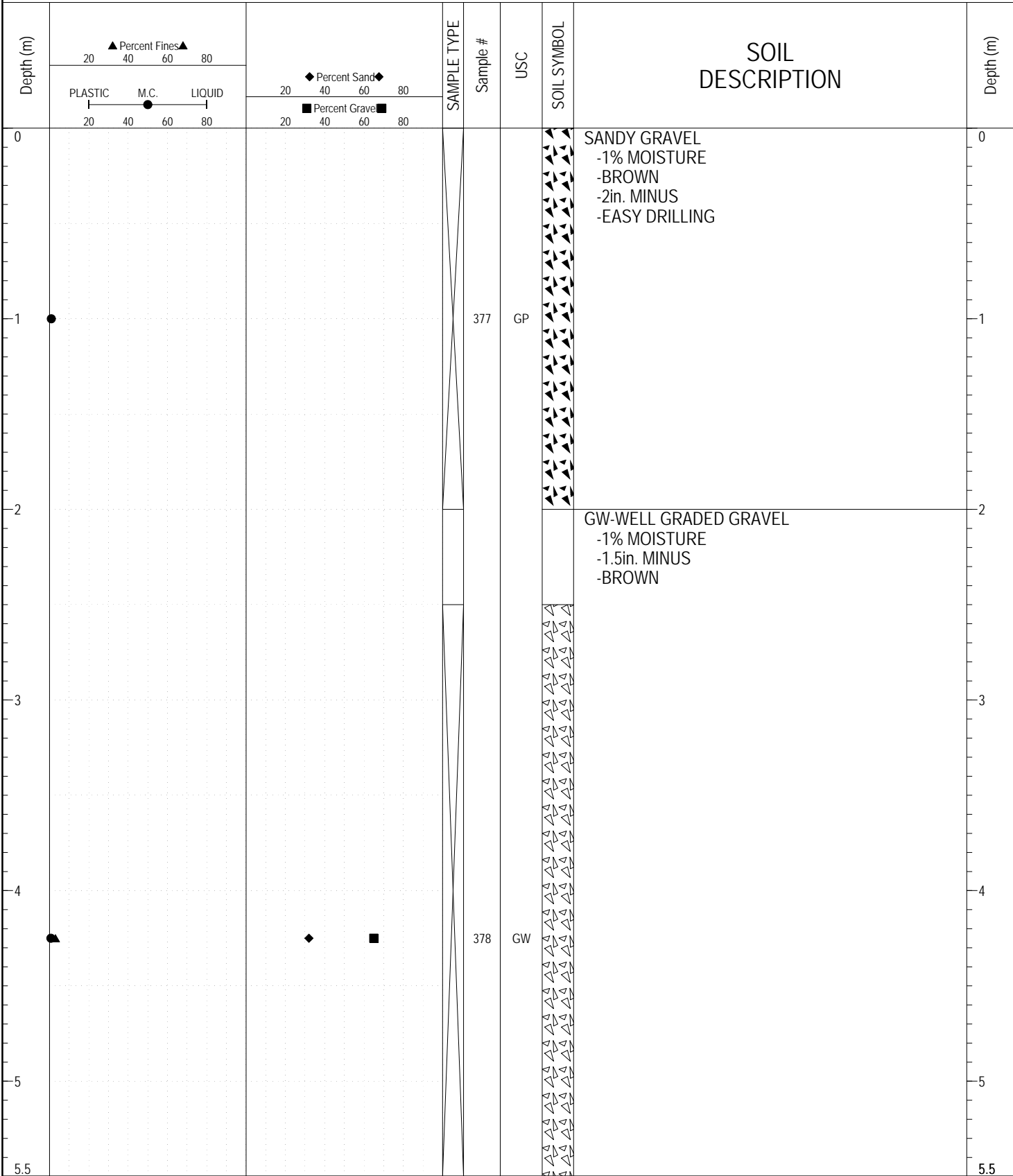
SUBSURFACE EXPLORATION AND TEST REPORT	KLONDIKE HWY GRAVEL SEARCH	BOREHOLE NO: 89-145
ENGINEERING CAPITAL	KM 196 K/H RHS	PROJECT NO: 02-0196 RHS
CME - 750 6" AUGER	LOCATION: SEE PLAN	ELEVATION:

SAMPLE TYPE RETURN S.P.T. Auger BULK TUBE CORE

Depth (m)	▲ Percent Fines ▲ 20 40 60 80		◆ Percent Sand ◆ 20 40 60 80		SAMPLE TYPE	Sample #	USC	SOIL SYMBOL	SOIL DESCRIPTION	Depth (m)
	PLASTIC M.C. LIQUID 20 40 60 80		■ Percent Gravel ■ 20 40 60 80							
5.5										5.5
6										6
7										7
8										8
9										9
10									END OF HOLE AT 10.0m	10
11										11

ESE IMPORT LOG GRAVEL 1989.GPJ YTG.GDT 7/16/17

SAMPLE TYPE RETURN S.P.T. Auger BULK TUBE CORE



ESE IMPORT LOG GRAVEL 1989.GPJ YTG.GDT 7/16/17

SUBSURFACE EXPLORATION AND TEST REPORT	KLONDIKE HWY GRAVEL SEARCH	BOREHOLE NO: 89-146
ENGINEERING CAPITAL	KM 196 K/H RHS	PROJECT NO: 02-0196 RHS
CME 750 6" AUGER	LOCATION: SEE PLAN	ELEVATION:

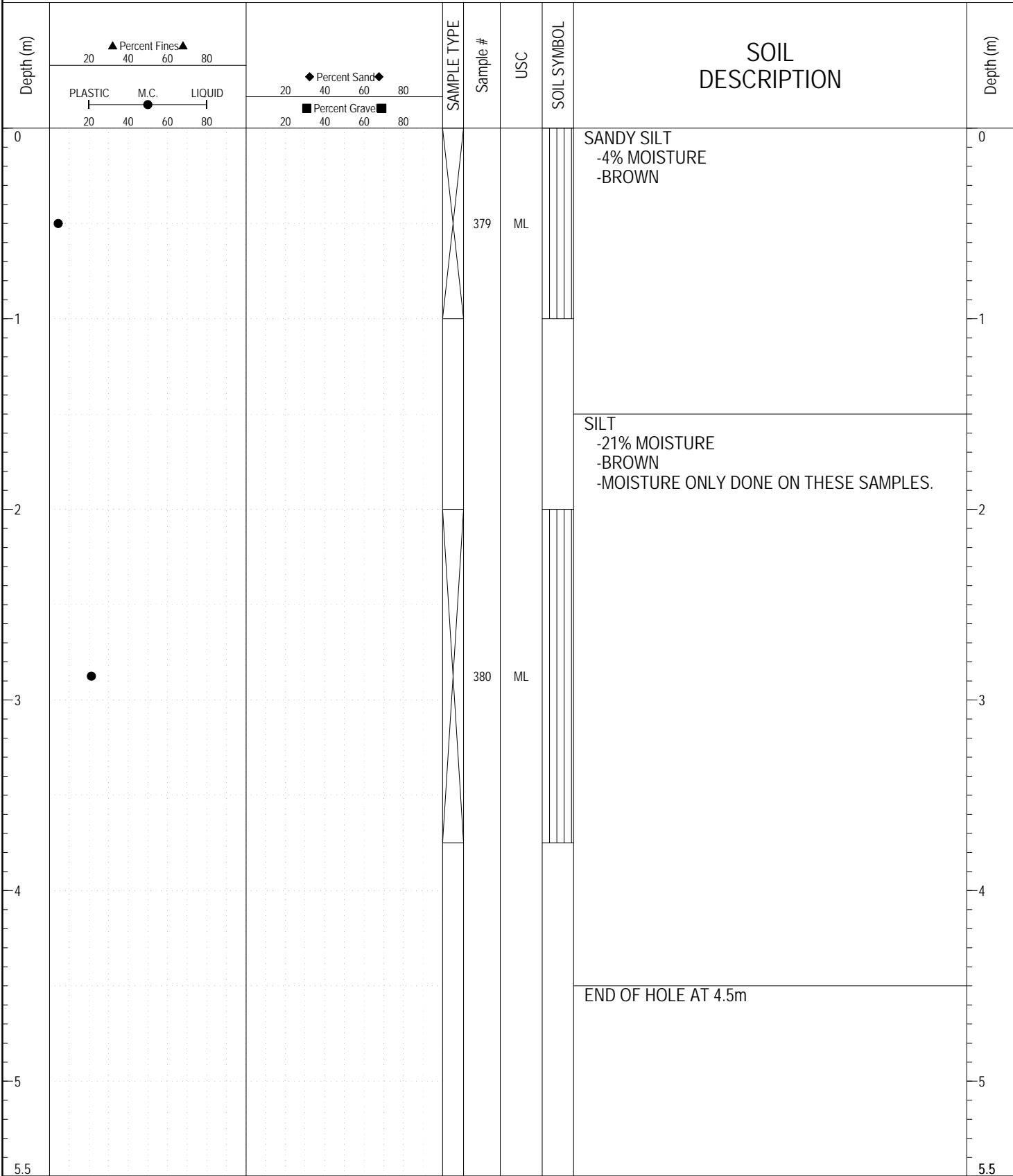
SAMPLE TYPE RETURN S.P.T. Auger BULK TUBE CORE

Depth (m)	▲ Percent Fines ▲ 20 40 60 80		◆ Percent Sand ◆ 20 40 60 80		SAMPLE TYPE	Sample #	USC	SOIL SYMBOL	SOIL DESCRIPTION	Depth (m)
	PLASTIC M.C. LIQUID 20 40 60 80		■ Percent Gravel ■ 20 40 60 80							
5.5								▲▲▲▲▲▲▲▲▲▲		5.5
6									END OF HOLE AT 6.0m	6
7										7
8										8
9										9
10										10
11										11

ESE IMPORT LOG GRAVEL 1989.GPJ YTG.GDT 7/16/17

SUBSURFACE EXPLORATION AND TEST REPORT	KLONDIKE HWY GRAVEL SEARCH	BOREHOLE NO: 89-147
ENGINEERING CAPITAL	KM 196 K/H RHS	PROJECT NO: 02-0196 RHS
CME 750 6" AUGER	LOCATION: SEE PLAN	ELEVATION:

SAMPLE TYPE RETURN S.P.T. Auger BULK TUBE CORE



ESE IMPORT LOG GRAVEL 1989.GPJ YTG.GDT 7/6/17

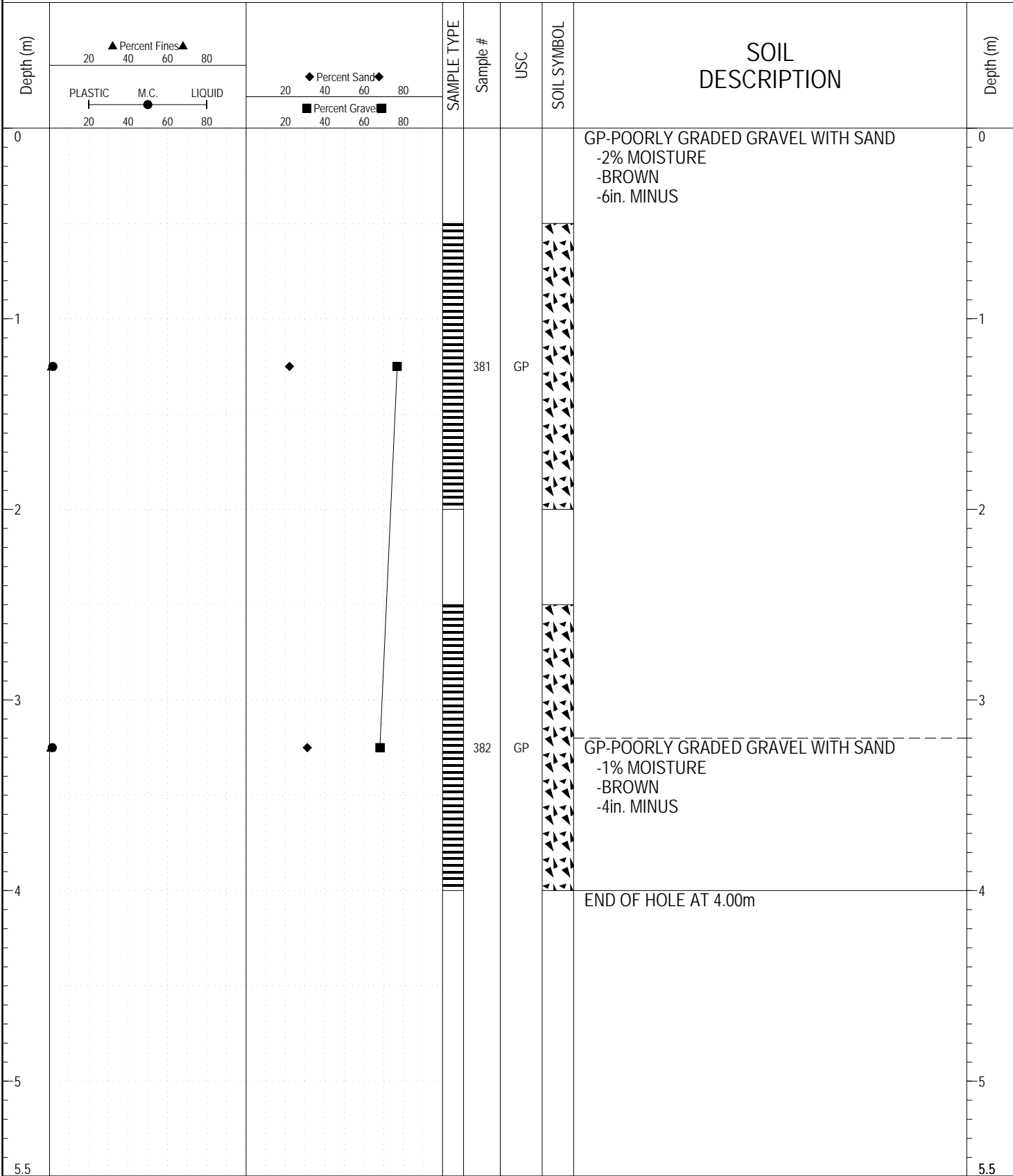
SAMPLE TYPE RETURN S.P.T. Auger BULK TUBE CORE

Depth (m)	<div style="text-align: center;">▲ Percent Fines ▲</div> <div style="text-align: center;">20 40 60 80</div> <div style="text-align: center;">PLASTIC M.C. LIQUID</div> <div style="text-align: center;">20 40 60 80</div>	<div style="text-align: center;">◆ Percent Sand ◆</div> <div style="text-align: center;">20 40 60 80</div> <div style="text-align: center;">■ Percent Gravel ■</div> <div style="text-align: center;">20 40 60 80</div>	SAMPLE TYPE	Sample #	USC	SOIL SYMBOL	SOIL DESCRIPTION	Depth (m)
0							SAND - FINE - DRY - WHITE TO BROWN	0
1							SAND - DAMP - YELLOW	1
2								2
3								3
4							END OF HOLE AT 4.0m - NO SAMPLES TAKEN	4
5								5
5.5								5.5

ESE IMPORT LOG GRAVEL 1989.GPJ YTG.GDT 7/16/17

SUBSURFACE EXPLORATION AND TEST REPORT	KLONDIKE HWY GRAVEL SEARCH	BOREHOLE NO: 89-149
CENTRAL REGION	2141-7	PROJECT NO: 02-0196 RHS
IBEX CONTRACTING	FROM FACE, 25M FROM STOCKPILE.	ELEVATION:

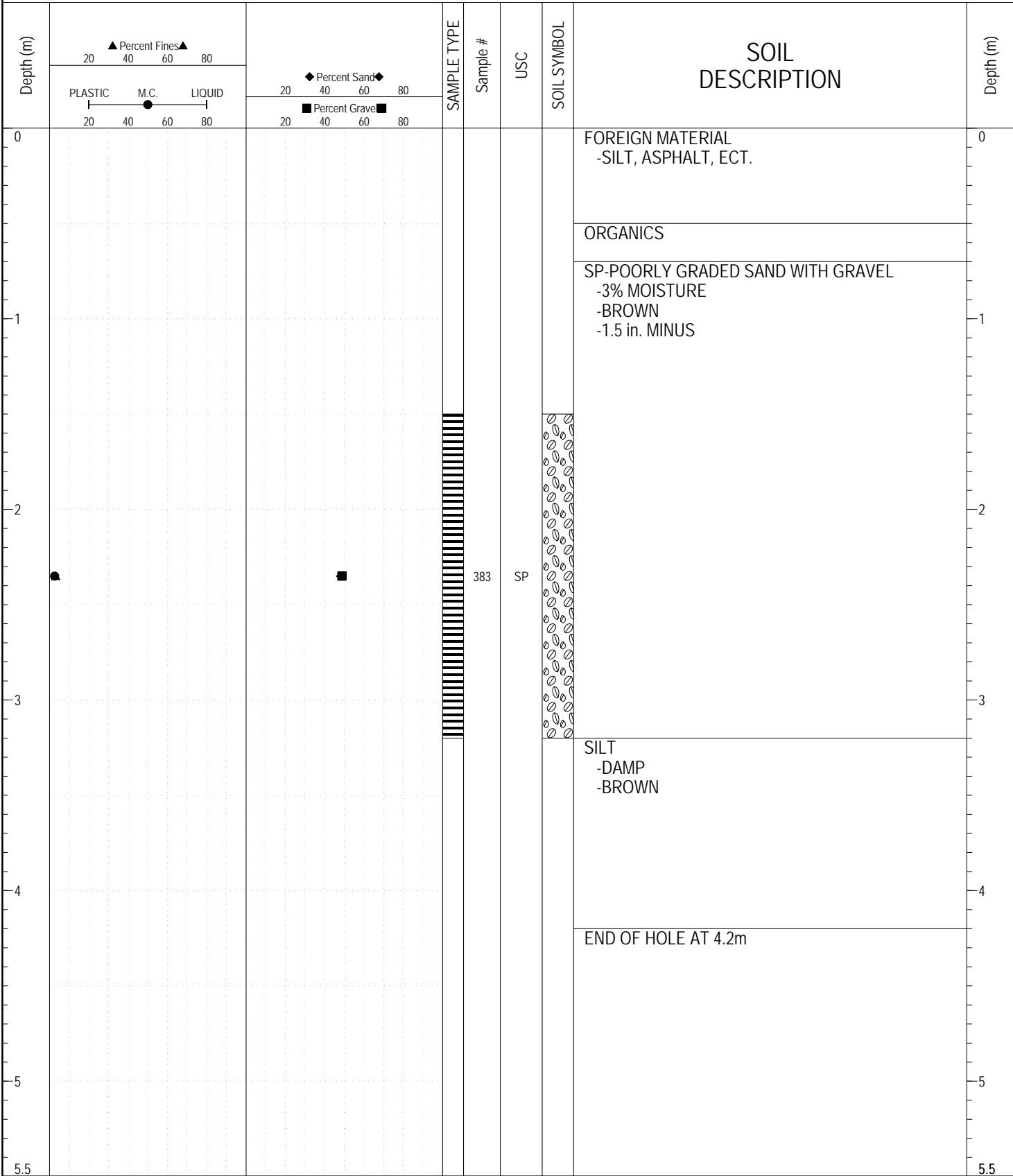
SAMPLE TYPE RETURN S.P.T. Auger BULK TUBE CORE



ESE IMPORT LOG GRAVEL 1989.GPJ YTG.GDT 7/16/17

SUBSURFACE EXPLORATION AND TEST REPORT	KLONDIKE HWY GRAVEL SEARCH	BOREHOLE NO: 89-150
CENTRAL REGION	2141-7	PROJECT NO: 02-0196RHS
IBEX CONTRACTING	FROM ENTRANCE. BETWEEN TH 89-141 & 142.	ELEVATION:

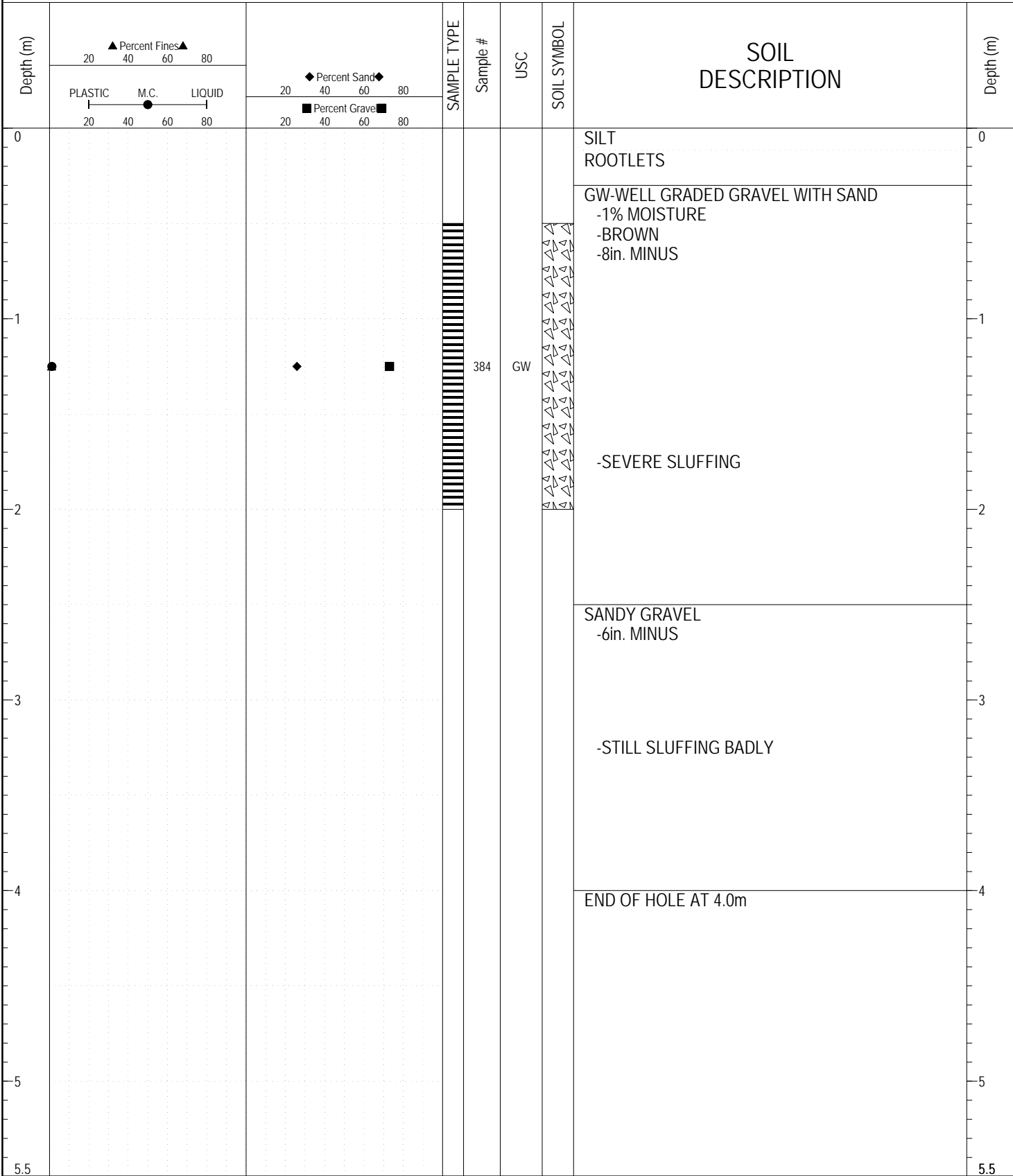
SAMPLE TYPE RETURN S.P.T. Auger BULK TUBE CORE



ESE IMPORT LOG GRAVEL 1989.GPJ YTG.GDT 7/16/17

SUBSURFACE EXPLORATION AND TEST REPORT	KLONDIKE HWY GRAVEL SEARCH	BOREHOLE NO: 89-151
CENTRAL REGION	2141-7	PROJECT NO: 02-0196RHS
IBEX CONTRACTING	15M NORTH OF BH 89-145	ELEVATION:

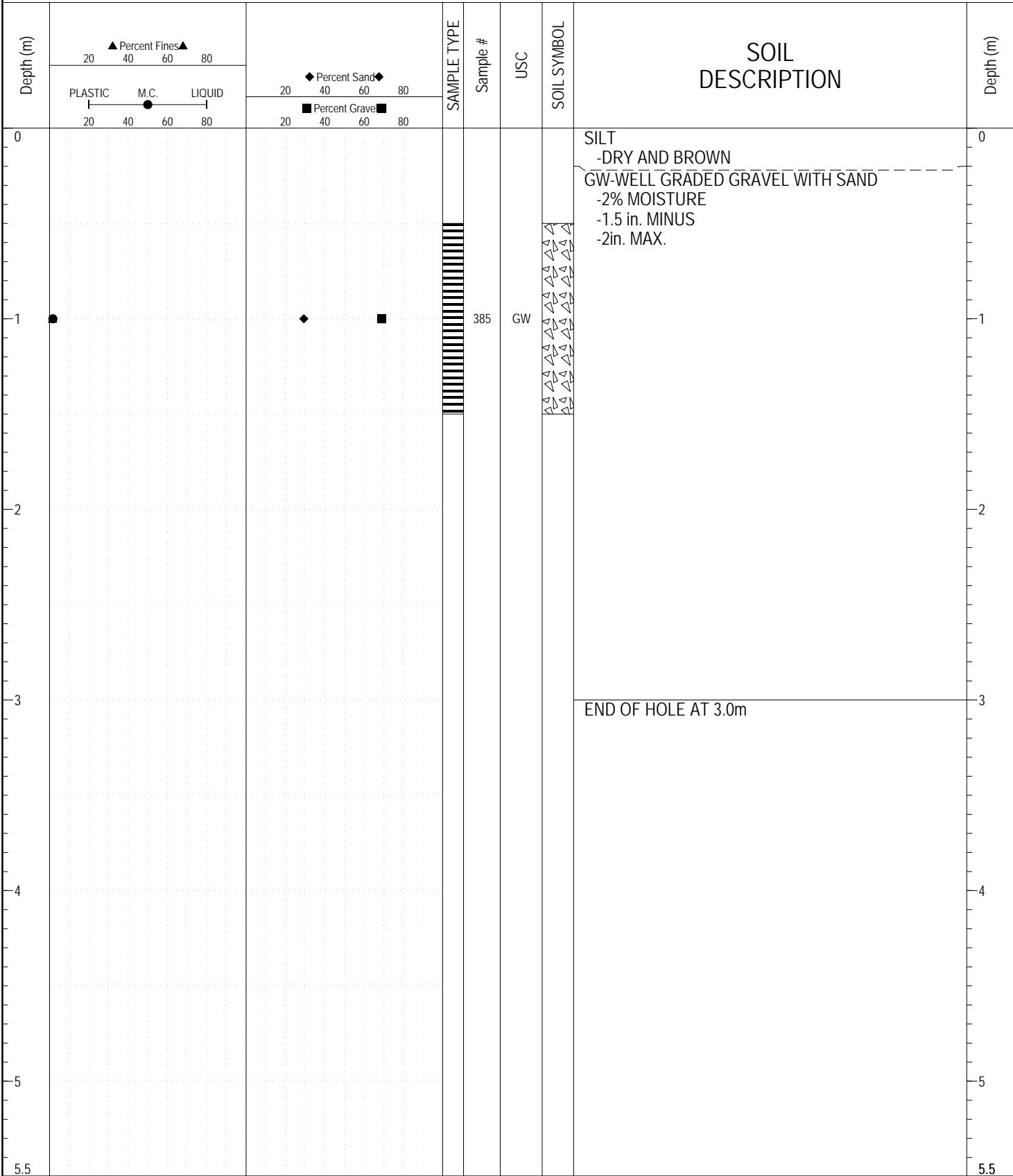
SAMPLE TYPE RETURN S.P.T. Auger BULK TUBE CORE



ESE IMPORT LOG GRAVEL 1989.GPJ YTG.GDT 7/16/17

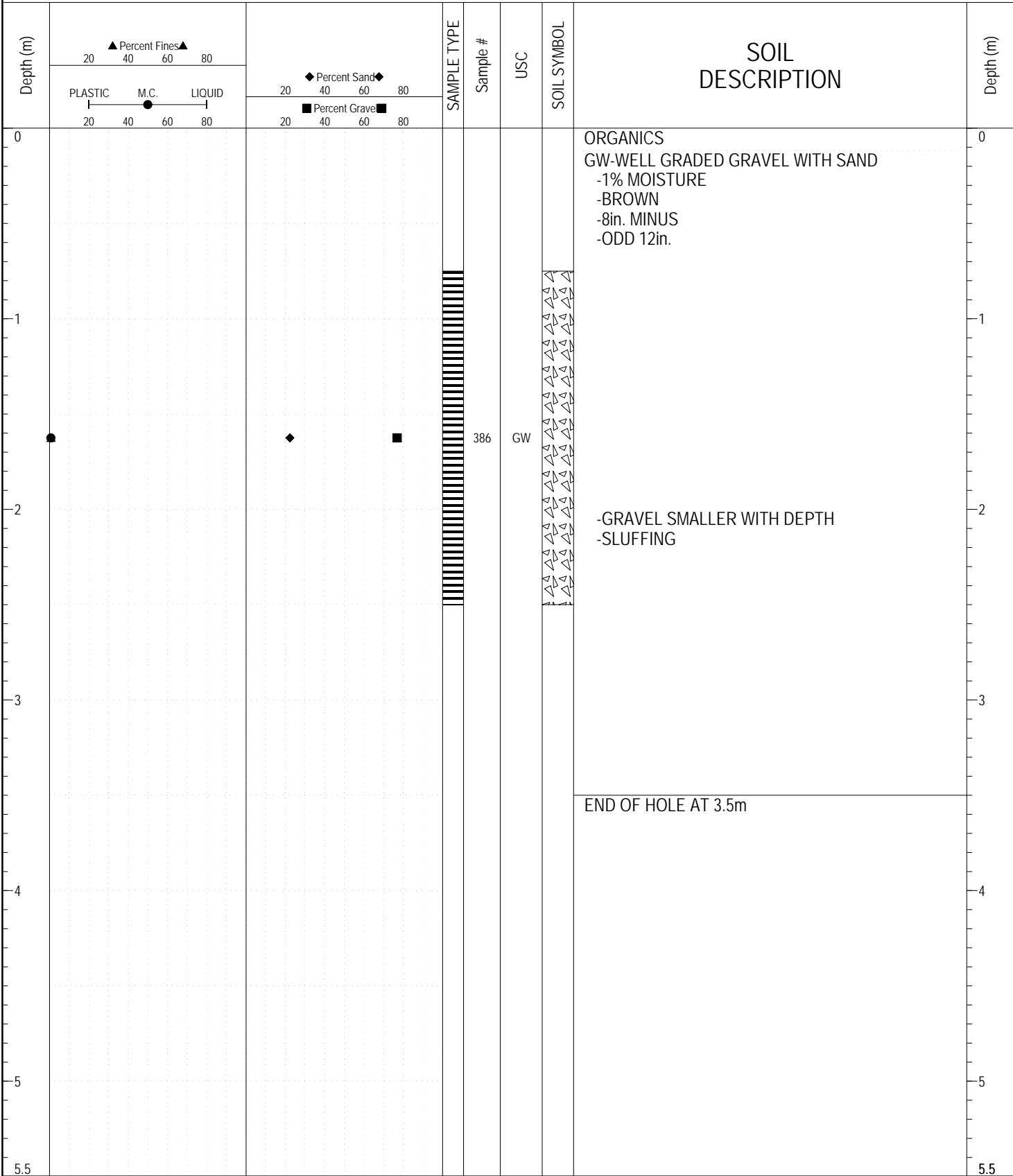
SUBSURFACE EXPLORATION AND TEST REPORT	KLONDIKE HWY GRAVEL SEARCH	BOREHOLE NO: 89-152
CENTRAL REGION	2141-7	PROJECT NO: 02-0196 RHS
IBEX CONTRACTING	100M NORTHWEST OF TH 89-151	ELEVATION:

SAMPLE TYPE RETURN S.P.T. Auger BULK TUBE CORE



ESE IMPORT LOG GRAVEL 1989.GPJ YTG.GDT 7/16/17

SAMPLE TYPE RETURN S.P.T. Auger BULK TUBE CORE



ESE IMPORT LOG GRAVEL 1989.GPJ YTG.GDT 7/16/17

SUBSURFACE EXPLORATION AND TEST REPORT	KLONDIKE HWY GRAVEL SEARCH	BOREHOLE NO: 89-153A
CENTRAL REGION	2141-7	PROJECT NO: 02-0196 RHS
IBEX CONTRACTING	NORTHEAST SIDE OF HILL	ELEVATION:

SAMPLE TYPE RETURN S.P.T. Auger BULK TUBE CORE

Depth (m)	▲ Percent Fines ▲		◆ Percent Sand ◆		SAMPLE TYPE	Sample #	USC	SOIL SYMBOL	SOIL DESCRIPTION	Depth (m)
	20	40	60	80						
0	PLASTIC M.C. LIQUID								ORGANICS	0
0.5									SANDY GRAVEL - DRY - BROWN - WHITE COVER ON GRAVEL - 3in. MINUS - COBBLES TO 8in.	0.5
1.5									- SLUFFING	1.5
2.5									END OF HOLE AT 2.5m	2.5
3.5										3.5
4.5										4.5
5.5										5.5

ESE IMPORT LOG GRAVEL 1989.GPJ YTG.GDT 7/16/17

SUBSURFACE EXPLORATION AND TEST REPORT	KLONDIKE HWY GRAVEL SEARCH	BOREHOLE NO: 89-153B
CENTRAL REGION	2141-7	PROJECT NO: 02-0196 RHS
IBEX CONTRACTING	NORTHEAST SIDE OF HILL	ELEVATION:

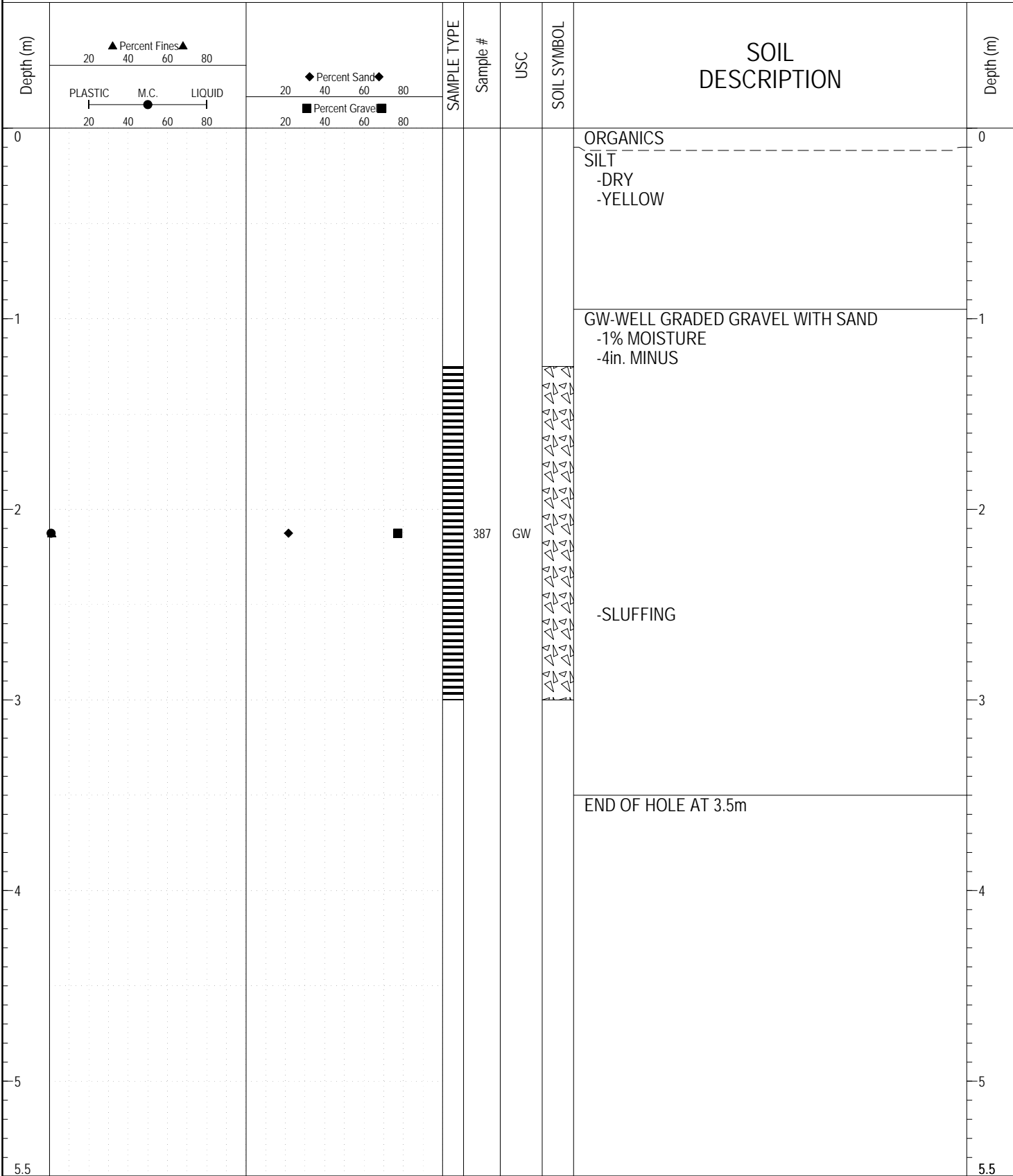
SAMPLE TYPE RETURN S.P.T. Auger BULK TUBE CORE

Depth (m)	▲ Percent Fines ▲ 20 40 60 80		◆ Percent Sand ◆ 20 40 60 80		SAMPLE TYPE	Sample #	USC	SOIL SYMBOL	SOIL DESCRIPTION	Depth (m)
	PLASTIC M.C. LIQUID 20 40 60 80		■ Percent Gravel ■ 20 40 60 80							
0									ORGANICS	0
									ROOTLETS AND SILT	
									SILT	
1										1
									SANDY GRAVEL - DRY - LIGHT BROWN - 4in. MINUS - SPARSE COBBLES TO 6in.	
2										2
									- SLUFFING	
3										3
									END OF HOLE AT 3.5m	
4										4
5										5
5.5										5.5

ESE IMPORT LOG GRAVEL 1989.GPJ YTG.GDT 7/16/17

SUBSURFACE EXPLORATION AND TEST REPORT	KLONDIKE HWY GRAVEL SEARCH	BOREHOLE NO: 89-154
CENTRAL REGION	2141-7	PROJECT NO: 02-0196 RHS
IBEX CONTRACTING	HEADING DOWN NORTH FACING SLOPE.	ELEVATION:

SAMPLE TYPE RETURN S.P.T. Auger BULK TUBE CORE



ESE IMPORT LOG GRAVEL 1989.GPJ YTG.GDT 7/16/17