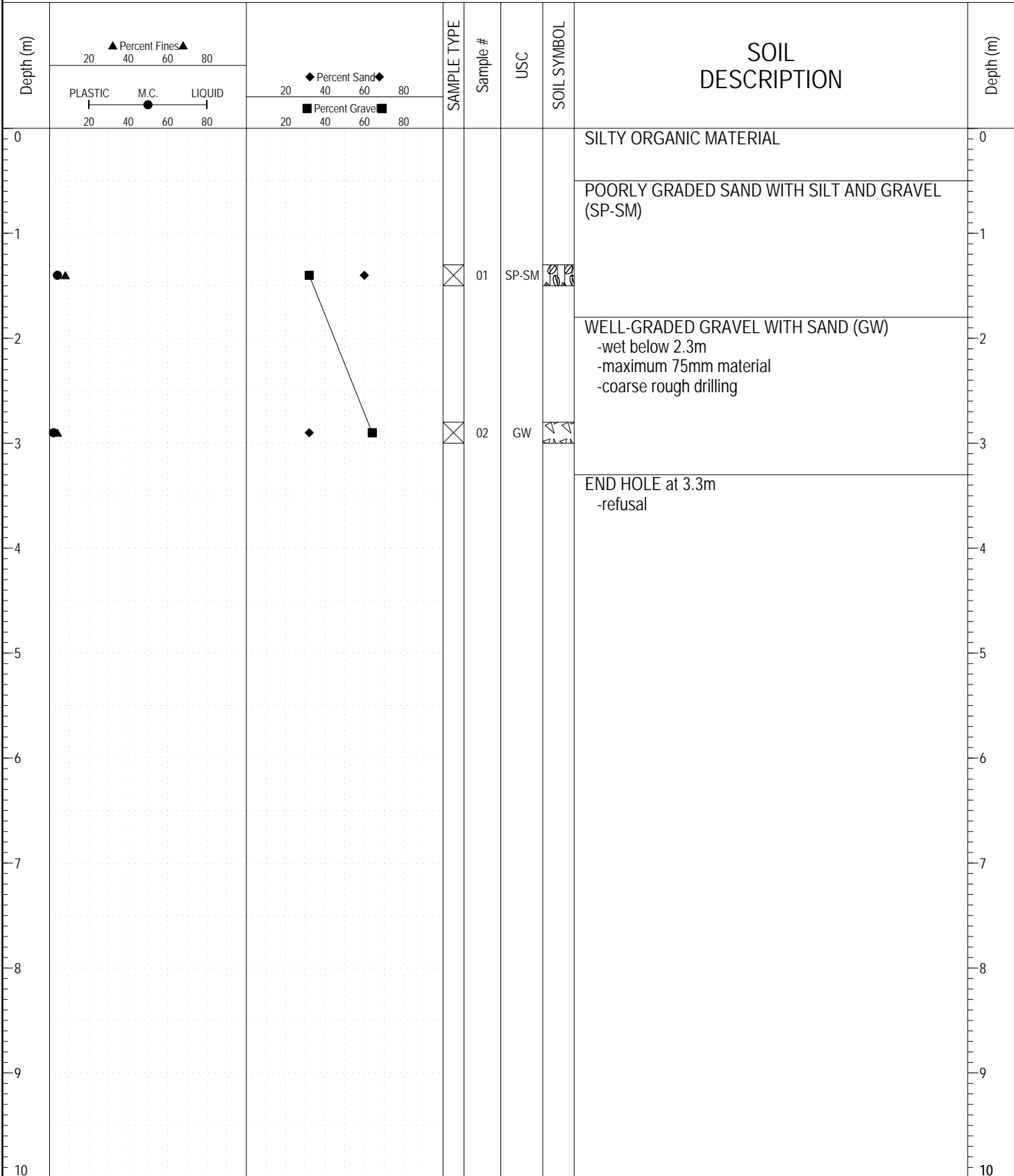


| | | |
|--|---------------------------------------|-----------------------|
| SUBSURFACE EXPLORATION AND TEST REPORT | ALASKA HIGHWAY GRANULAR INVESTIGATION | BOREHOLE NO: 017-01 |
| PWC CAPITAL - YT | A/H KM 1747 LHS | PROJECT NO: 115 G - 1 |
| DRILL: B30 150mm Dia. SOLID STEM AUGER | LOCATION: SEE PLAN | ELEVATION: 0 m |

SAMPLE TYPE RETURN S.P.T. Auger BULK TUBE CORE



ESE IMPORT LOG GRAVEL 016-020.GPJ YTG.GDT 6/29/17

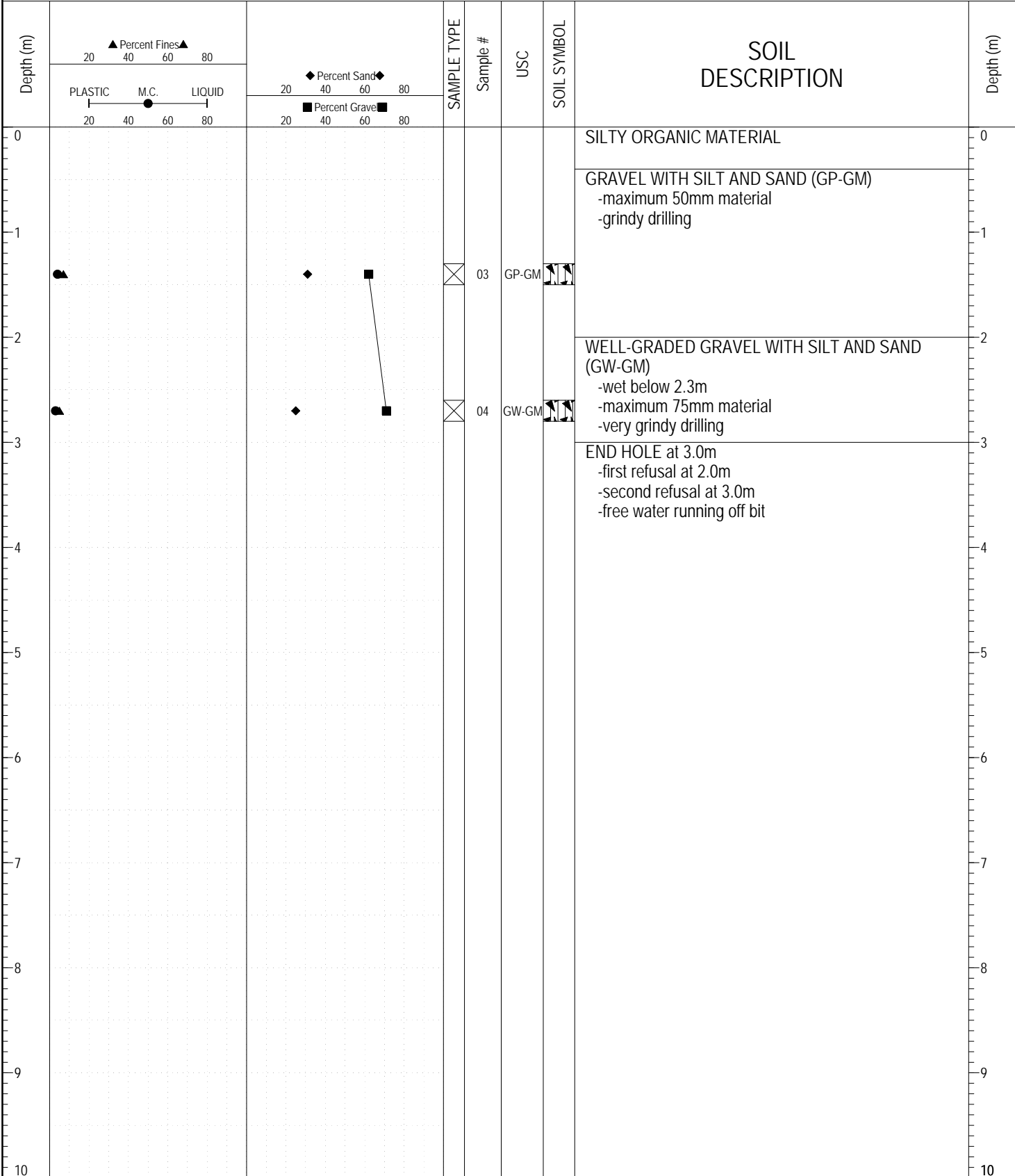


Highways and Public Works
Transportation Engineering Branch

| | |
|---------------|--------------------------|
| LOGGED BY: DT | COMPLETION DEPTH: 3.30 m |
| REVIEWED BY: | COMPLETION DATE: 8/23/88 |
| | Page 1 of 1 |

| | | |
|--|---------------------------------------|-----------------------|
| SUBSURFACE EXPLORATION AND TEST REPORT | ALASKA HIGHWAY GRANULAR INVESTIGATION | BOREHOLE NO: 017-02 |
| PWC CAPITAL - YT | A/H KM 1747 LHS | PROJECT NO: 115 G - 1 |
| DRILL: B30 150mm Dia. SOLID STEM AUGER | LOCATION: SEE PLAN | ELEVATION: 0 m |

SAMPLE TYPE RETURN S.P.T. Auger BULK TUBE CORE



ESE IMPORT LOG GRAVEL 016-020.GPJ YTG.GDT 6/29/17

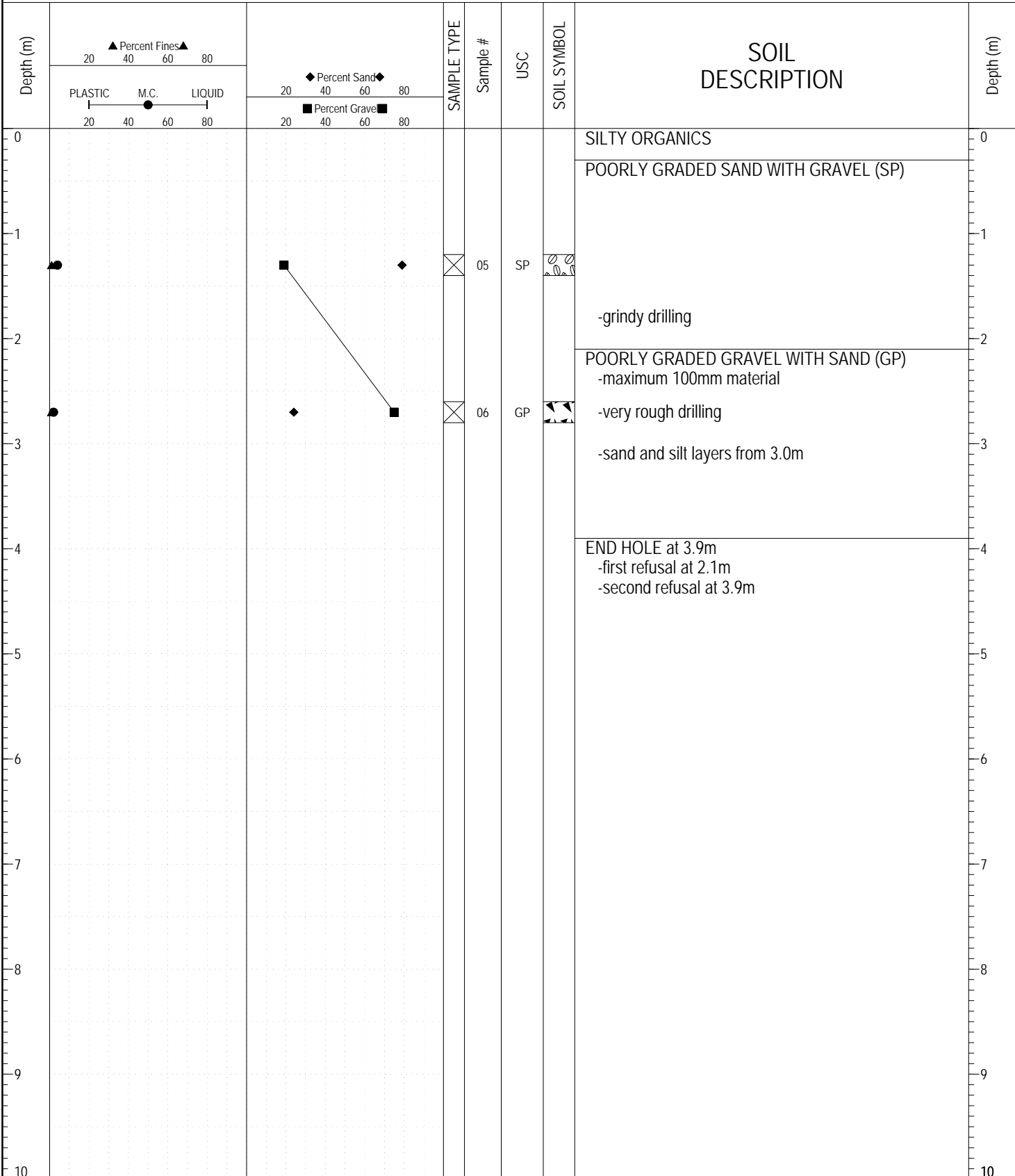


Highways and Public Works
Transportation Engineering Branch

| | |
|---------------|--------------------------|
| LOGGED BY: DT | COMPLETION DEPTH: 3.00 m |
| REVIEWED BY: | COMPLETION DATE: 8/23/88 |
| | Page 1 of 1 |

| | | |
|--|---------------------------------------|-----------------------|
| SUBSURFACE EXPLORATION AND TEST REPORT | ALASKA HIGHWAY GRANULAR INVESTIGATION | BOREHOLE NO: 017-03 |
| PWC CAPITAL - YT | A/H KM 1747 LHS | PROJECT NO: 115 G - 1 |
| DRILL: B30 150mm Dia. SOLID STEM AUGER | LOCATION: SEE PLAN | ELEVATION: 0 m |

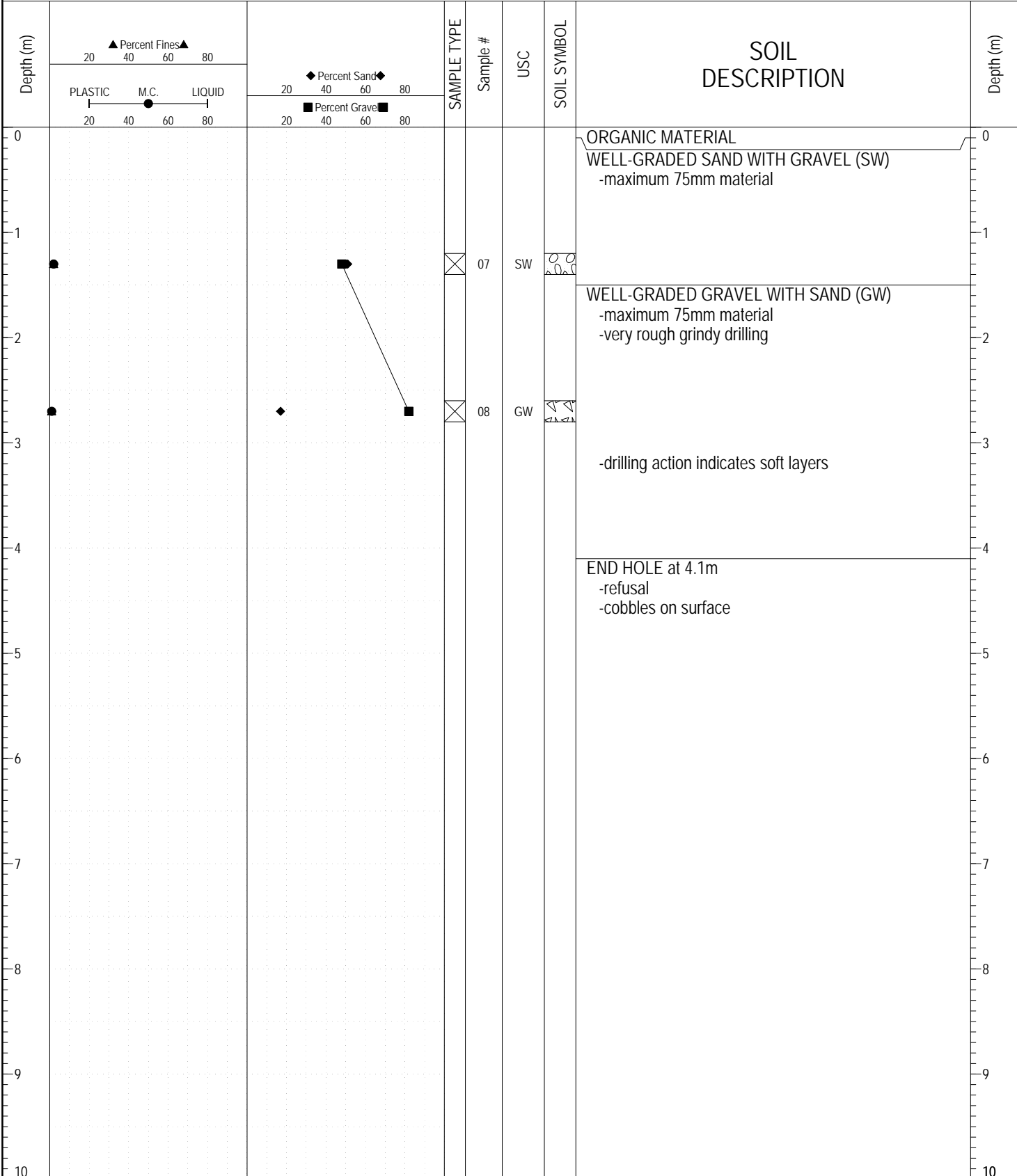
SAMPLE TYPE RETURN S.P.T. Auger BULK TUBE CORE



ESE IMPORT LOG GRAVEL 016-020.GPJ YTG.GDT 6/29/17

| | | |
|--|---------------------------------------|-----------------------|
| SUBSURFACE EXPLORATION AND TEST REPORT | ALASKA HIGHWAY GRANULAR INVESTIGATION | BOREHOLE NO: 017-04 |
| PWC CAPITAL - YT | A/H KM 1747 LHS | PROJECT NO: 115 G - 1 |
| DRILL: B30 150mm Dia. SOLID STEM AUGER | LOCATION: SEE PLAN | ELEVATION: 0 m |

SAMPLE TYPE RETURN S.P.T. Auger BULK TUBE CORE



ESE IMPORT LOG GRAVEL 016-020.GPJ YTG.GDT 6/29/17



Highways and Public Works
Transportation Engineering Branch

| | |
|---------------|--------------------------|
| LOGGED BY: DT | COMPLETION DEPTH: 4.10 m |
| REVIEWED BY: | COMPLETION DATE: 8/23/88 |
| | Page 1 of 1 |

| | | |
|--|---------------------------------------|-----------------------|
| SUBSURFACE EXPLORATION AND TEST REPORT | ALASKA HIGHWAY GRANULAR INVESTIGATION | BOREHOLE NO: 017-05 |
| PWC CAPITAL - YT | A/H KM 1747 LHS | PROJECT NO: 115 G - 1 |
| DRILL: B30 150mm Dia. SOLID STEM AUGER | LOCATION: SEE PLAN | ELEVATION: 0 m |

SAMPLE TYPE RETURN S.P.T. Auger BULK TUBE CORE

| Depth (m) | Percent Fines ▲ | | Percent Sand ◆ | | SAMPLE TYPE | Sample # | USC | SOIL SYMBOL | SOIL DESCRIPTION | Depth (m) |
|-----------|-----------------|----|----------------|----|-------------|----------|-----|-------------|---|-----------|
| | 20 | 40 | 60 | 80 | | | | | | |
| 0 | | | | | | | | | ORGANIC MATERIAL -black | 0 |
| 0.5 | | | | | | | | | SANDY SILT (ML) -brown -saturated -frozen below 0.9m | 0.5 |
| 1 | | | | | | | | | | 1 |
| 1.5 | | | | | | | | | | 1.5 |
| 2 | | | | | | | | | | 2 |
| 2.5 | | | | | | | | | END HOLE at 2.5m -first refusal at 2.1m -second refusal at 2.5m | 2.5 |
| 3 | | | | | | | | | | 3 |
| 4 | | | | | | | | | | 4 |
| 5 | | | | | | | | | | 5 |
| 6 | | | | | | | | | | 6 |
| 7 | | | | | | | | | | 7 |
| 8 | | | | | | | | | | 8 |
| 9 | | | | | | | | | | 9 |
| 10 | | | | | | | | | | 10 |

ESE IMPORT LOG GRAVEL 016-020.GPJ YTG.GDT 6/29/17

| | | |
|--|---------------------------------------|-----------------------|
| SUBSURFACE EXPLORATION AND TEST REPORT | ALASKA HIGHWAY GRANULAR INVESTIGATION | BOREHOLE NO: 017-06 |
| PWC CAPITAL - YT | A/H KM 1747 LHS | PROJECT NO: 115 G - 1 |
| DRILL: B30 150mm Dia. SOLID STEM AUGER | LOCATION: SEE PLAN | ELEVATION: 0 m |

SAMPLE TYPE RETURN S.P.T. Auger BULK TUBE CORE

| Depth (m) | Percent Fines ▲ | | Percent Sand ◆ | | SAMPLE TYPE | Sample # | USC | SOIL SYMBOL | SOIL DESCRIPTION | Depth (m) |
|-----------|-----------------|----|----------------|----|-------------|----------|-----|-------------|---------------------|-----------|
| | 20 | 40 | 60 | 80 | | | | | | |
| 0 | | | | | | | | | ORGANIC MATERIAL | 0 |
| | | | | | | | | | SILT WITH SAND (ML) | |
| | | | | | | | | | -dark brown | |
| | | | | | | | | | -frozen | |
| 1 | | | | | | 10 | ML | | | 1 |
| | | | | | | | | | END HOLE at 1.5m | |
| | | | | | | | | | -thick spruce cover | |
| 2 | | | | | | | | | | 2 |
| 3 | | | | | | | | | | 3 |
| 4 | | | | | | | | | | 4 |
| 5 | | | | | | | | | | 5 |
| 6 | | | | | | | | | | 6 |
| 7 | | | | | | | | | | 7 |
| 8 | | | | | | | | | | 8 |
| 9 | | | | | | | | | | 9 |
| 10 | | | | | | | | | | 10 |

ESE IMPORT LOG GRAVEL 016-020.GPJ YTG.GDT 6/29/17



Highways and Public Works
Transportation Engineering Branch

| | |
|---------------|--------------------------|
| LOGGED BY: DT | COMPLETION DEPTH: 1.50 m |
| REVIEWED BY: | COMPLETION DATE: 8/24/88 |
| | Page 1 of 1 |

| | | |
|--|---------------------------------------|-----------------------|
| SUBSURFACE EXPLORATION AND TEST REPORT | ALASKA HIGHWAY GRANULAR INVESTIGATION | BOREHOLE NO: 017-07 |
| PWC CAPITAL - YT | A/H KM 1747 LHS | PROJECT NO: 115 G - 1 |
| DRILL: B30 150mm Dia. SOLID STEM AUGER | LOCATION: SEE PLAN | ELEVATION: 0 m |

SAMPLE TYPE RETURN S.P.T. Auger BULK TUBE CORE

| Depth (m) | ▲ Percent Fines ▲ 20 40 60 80 PLASTIC M.C. LIQUID 20 40 60 80 | | ◆ Percent Sand ◆ 20 40 60 80 ■ Percent Gravel ■ 20 40 60 80 | | SAMPLE TYPE | Sample # | USC | SOIL SYMBOL | SOIL DESCRIPTION | Depth (m) |
|-----------|--|---|--|---|-------------------------------------|----------|-----|-------------------------------------|---|-----------|
| | | | | | | | | | | |
| 0 | | | | | | | | | ORGANIC MATERIAL | 0 |
| 1 | ● | ▲ | ◆ | ■ | <input checked="" type="checkbox"/> | 11 | ML | <input checked="" type="checkbox"/> | SANDY SILT WITH GRAVEL (ML) -frozen | 1 |
| 2 | | | | | | | | | END HOLE at 1.4m -unable to penetrate frozen material -spruce cover | 2 |
| 3 | | | | | | | | | | 3 |
| 4 | | | | | | | | | | 4 |
| 5 | | | | | | | | | | 5 |
| 6 | | | | | | | | | | 6 |
| 7 | | | | | | | | | | 7 |
| 8 | | | | | | | | | | 8 |
| 9 | | | | | | | | | | 9 |
| 10 | | | | | | | | | | 10 |

ESE IMPORT LOG GRAVEL 016-020.GPJ YTG.GDT 6/29/17



Highways and Public Works
Transportation Engineering Branch

| | |
|---------------|--------------------------|
| LOGGED BY: DT | COMPLETION DEPTH: 1.40 m |
| REVIEWED BY: | COMPLETION DATE: 8/24/88 |
| | Page 1 of 1 |

| | | |
|--|---------------------------------------|-----------------------|
| SUBSURFACE EXPLORATION AND TEST REPORT | ALASKA HIGHWAY GRANULAR INVESTIGATION | BOREHOLE NO: 017-08 |
| PWC CAPITAL - YT | A/H KM 1747 LHS | PROJECT NO: 115 G - 1 |
| DRILL: B30 150mm Dia. SOLID STEM AUGER | LOCATION: SEE PLAN | ELEVATION: 0 m |

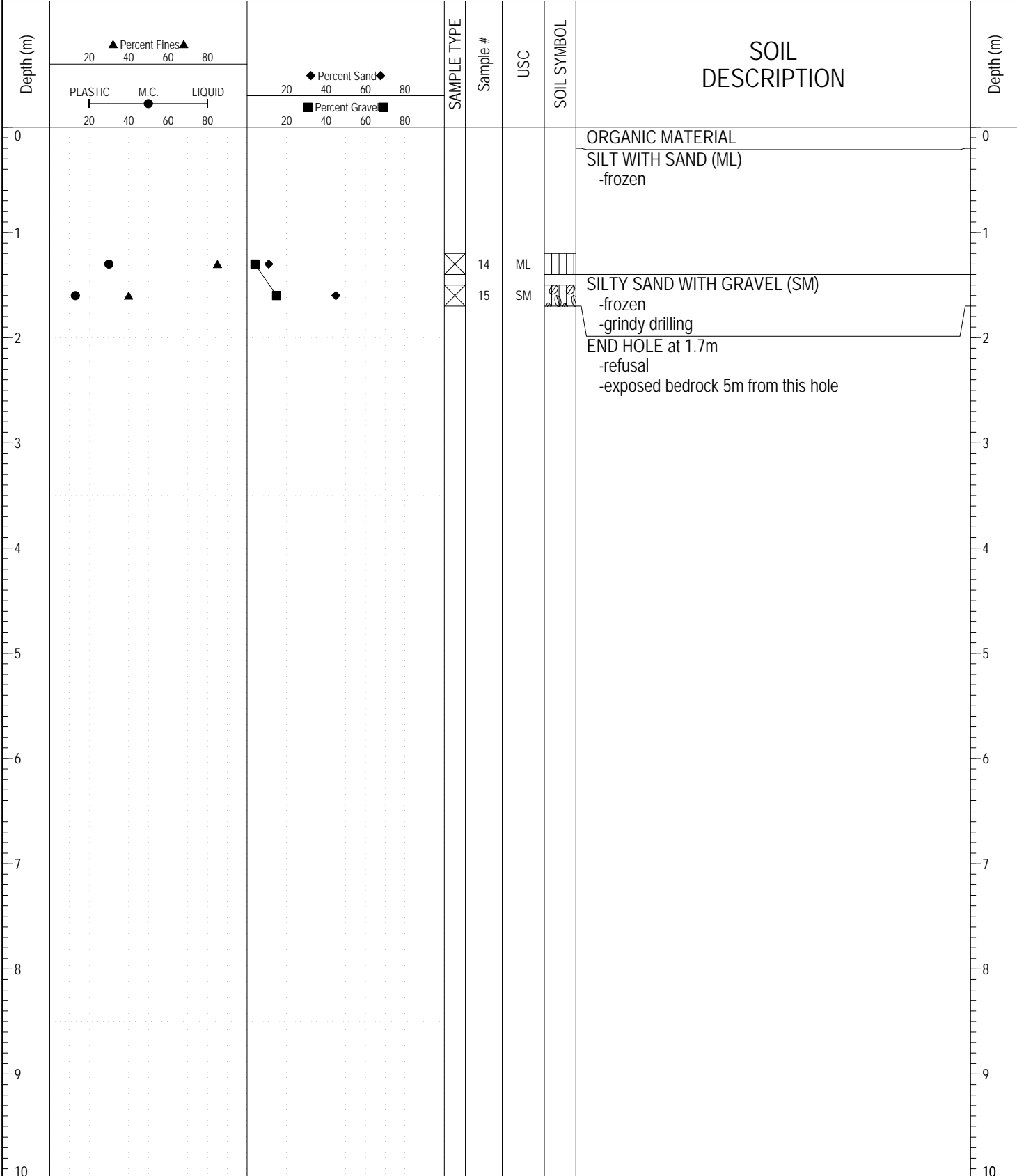
SAMPLE TYPE RETURN S.P.T. Auger BULK TUBE CORE

| Depth (m) | ▲ Percent Fines ▲ | | ◆ Percent Sand ◆ | | SAMPLE TYPE | Sample # | USC | SOIL SYMBOL | SOIL DESCRIPTION | Depth (m) |
|-----------|-------------------|----|------------------|----|-------------|----------|-----|-------------|---|-----------|
| | 20 | 40 | 60 | 80 | | | | | | |
| 0 | | | | | | | | | ORGANIC MATERIAL | 0 |
| 0.5 | | | | | | | | | POORLY GRADED SAND WITH SILT AND GRAVEL (SP-SM) -maximum 25mm material -grindy drilling | 1 |
| 1.5 | | | | | | | | | | 2 |
| 2.0 | | | | | | | | | | 2 |
| 2.2 | | | | | | | | | | 2 |
| 2.5 | | | | | | | | | | 2 |
| 2.6 | | | | | | | | | | 2 |
| 2.6 | | | | | | | | | END HOLE at 2.6m -refusal | 3 |
| 3 | | | | | | | | | | 3 |
| 4 | | | | | | | | | | 4 |
| 5 | | | | | | | | | | 5 |
| 6 | | | | | | | | | | 6 |
| 7 | | | | | | | | | | 7 |
| 8 | | | | | | | | | | 8 |
| 9 | | | | | | | | | | 9 |
| 10 | | | | | | | | | | 10 |

ESE IMPORT LOG GRAVEL 016-020.GPJ YTG.GDT 6/29/17

| | | |
|--|---------------------------------------|-----------------------|
| SUBSURFACE EXPLORATION AND TEST REPORT | ALASKA HIGHWAY GRANULAR INVESTIGATION | BOREHOLE NO: 017-09 |
| PWC CAPITAL - YT | A/H KM 1747 LHS | PROJECT NO: 115 G - 1 |
| DRILL: B30 150mm Dia. SOLID STEM AUGER | LOCATION: SEE PLAN | ELEVATION: 0 m |

SAMPLE TYPE RETURN S.P.T. Auger BULK TUBE CORE



ESE IMPORT LOG GRAVEL 016-020.GPJ YTG.GDT 6/29/17

| | | |
|--|---------------------------------------|-----------------------|
| SUBSURFACE EXPLORATION AND TEST REPORT | ALASKA HIGHWAY GRANULAR INVESTIGATION | BOREHOLE NO: 017-10 |
| PWC CAPITAL - YT | A/H KM 1747 LHS | PROJECT NO: 115 G - 1 |
| DRILL: B30 150mm Dia. SOLID STEM AUGER | LOCATION: SEE PLAN | ELEVATION: 0 m |

SAMPLE TYPE RETURN S.P.T. Auger BULK TUBE CORE

| Depth (m) | ▲ Percent Fines ▲ 20 40 60 80 PLASTIC M.C. LIQUID | | ◆ Percent Sand ◆ 20 40 60 80 ■ Percent Gravel ■ 20 40 60 80 | | SAMPLE TYPE | Sample # | USC | SOIL SYMBOL | SOIL DESCRIPTION | Depth (m) |
|-----------|---|--|--|--|-------------|----------|-----|-------------|--|-----------|
| | | | | | | | | | | |
| 0 | | | | | | | | | -water level -no samples taken as material washed off by free water | 0 |
| 1 | | | | | | | | | | 1 |
| 2 | | | | | | | | | END HOLE -thick spruce cover | 2 |
| 3 | | | | | | | | | | 3 |
| 4 | | | | | | | | | | 4 |
| 5 | | | | | | | | | | 5 |
| 6 | | | | | | | | | | 6 |
| 7 | | | | | | | | | | 7 |
| 8 | | | | | | | | | | 8 |
| 9 | | | | | | | | | | 9 |
| 10 | | | | | | | | | | 10 |

ESE IMPORT LOG GRAVEL 016-020.GPJ YTG.GDT 6/29/17

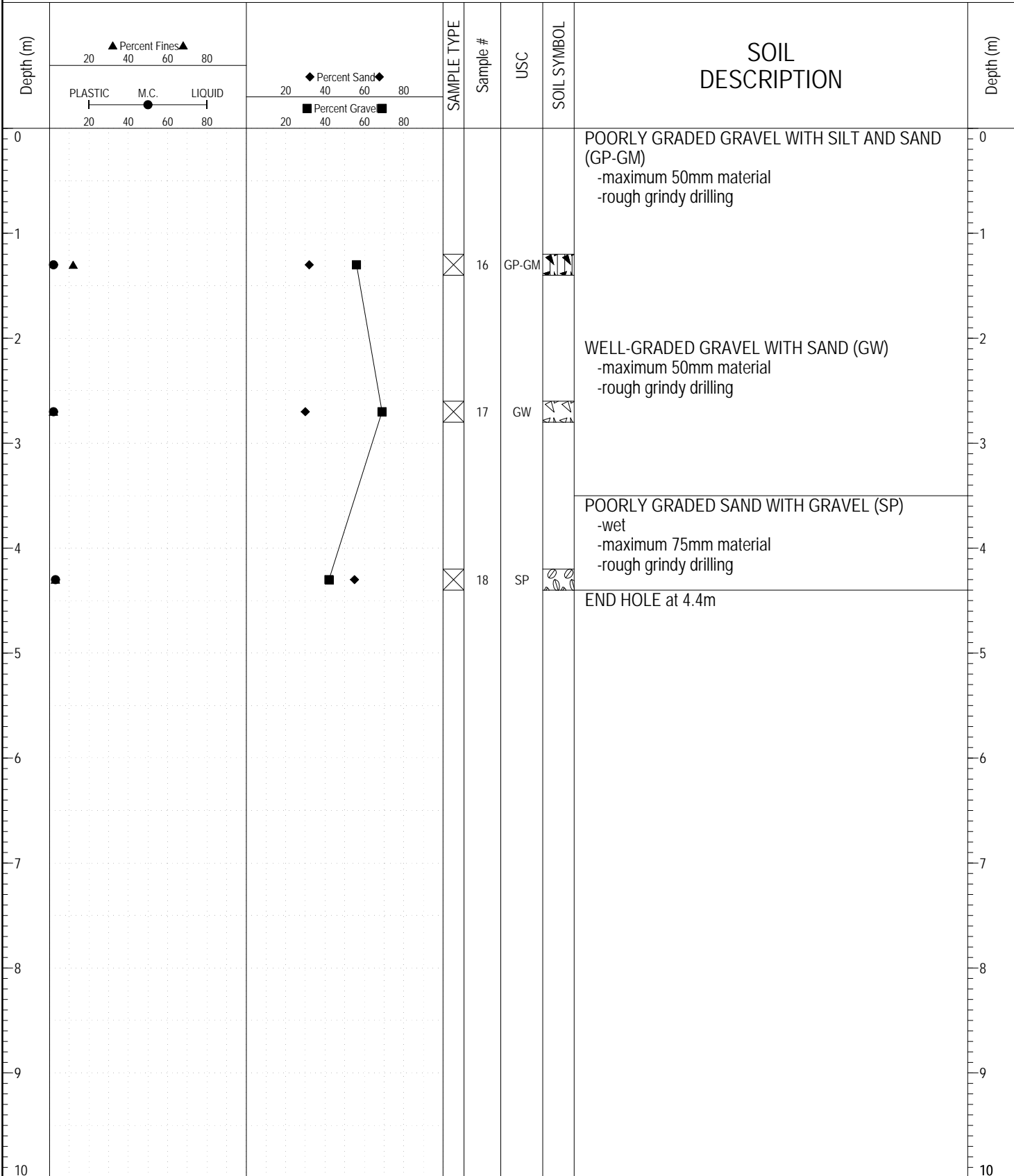


Highways and Public Works
Transportation Engineering Branch

| | |
|---------------|--------------------------|
| LOGGED BY: DT | COMPLETION DEPTH: 1.50 m |
| REVIEWED BY: | COMPLETION DATE: 8/24/88 |
| | Page 1 of 1 |

| | | |
|--|---------------------------------------|-----------------------|
| SUBSURFACE EXPLORATION AND TEST REPORT | ALASKA HIGHWAY GRANULAR INVESTIGATION | BOREHOLE NO: 017-11 |
| PWC CAPITAL - YT | A/H KM 1747 LHS | PROJECT NO: 115 G - 1 |
| DRILL: B30 150mm Dia. SOLID STEM AUGER | LOCATION: SEE PLAN | ELEVATION: 0 m |

SAMPLE TYPE RETURN S.P.T. Auger BULK TUBE CORE



ESE IMPORT LOG GRAVEL 016-020.GPJ YTG.GDT 6/29/17



Highways and Public Works
Transportation Engineering Branch

| | |
|---------------|--------------------------|
| LOGGED BY: DT | COMPLETION DEPTH: 4.40 m |
| REVIEWED BY: | COMPLETION DATE: 8/24/88 |
| | Page 1 of 1 |

| | | |
|--|---------------------------------------|-----------------------|
| SUBSURFACE EXPLORATION AND TEST REPORT | ALASKA HIGHWAY GRANULAR INVESTIGATION | BOREHOLE NO: 017-12 |
| PWC CAPITAL - YT | A/H KM 1747 LHS | PROJECT NO: 115 G - 1 |
| DRILL: B30 150mm Dia. SOLID STEM AUGER | LOCATION: SEE PLAN | ELEVATION: 0 m |

SAMPLE TYPE RETURN S.P.T. Auger BULK TUBE CORE

| Depth (m) | ▲ Percent Fines ▲ 20 40 60 80 | | ◆ Percent Sand ◆ 20 40 60 80 | | SAMPLE TYPE | Sample # | USC | SOIL SYMBOL | SOIL DESCRIPTION | Depth (m) |
|-----------|---|--|--|--|-------------|----------|-----|-------------|--|-----------|
| | PLASTIC M.C. LIQUID 20 40 60 80 | | ■ Percent Gravel ■ 20 40 60 80 | | | | | | | |
| 0 | | | | | | | | | GRAVELY SAND | 0 |
| 1 | | | | | | | | | ORGANIC SILT -saturated | 1 |
| 2 | | | | | | | | | GRAVELY SILT -rough grindy drilling | 2 |
| | | | | | | | | | END HOLE at 1.9m -refusal | 2 |
| 3 | | | | | | | | | | 3 |
| 4 | | | | | | | | | | 4 |
| 5 | | | | | | | | | | 5 |
| 6 | | | | | | | | | | 6 |
| 7 | | | | | | | | | | 7 |
| 8 | | | | | | | | | | 8 |
| 9 | | | | | | | | | | 9 |
| 10 | | | | | | | | | | 10 |

ESE IMPORT LOG GRAVEL 016-020.GPJ YTG.GDT 6/29/17



Highways and Public Works
Transportation Engineering Branch

| | |
|---------------|--------------------------|
| LOGGED BY: DT | COMPLETION DEPTH: 1.90 m |
| REVIEWED BY: | COMPLETION DATE: 8/24/88 |
| | Page 1 of 1 |

| | | |
|--|---------------------------------------|-----------------------|
| SUBSURFACE EXPLORATION AND TEST REPORT | ALASKA HIGHWAY GRANULAR INVESTIGATION | BOREHOLE NO: 017-13 |
| PWC CAPITAL - YT | A/H KM 1747 LHS | PROJECT NO: 115 G - 1 |
| DRILL: B30 150mm Dia. SOLID STEM AUGER | LOCATION: SEE PLAN | ELEVATION: 0 m |

SAMPLE TYPE RETURN S.P.T. Auger BULK TUBE CORE

| Depth (m) | ▲ Percent Fines ▲ 20 40 60 80 | | ◆ Percent Sand ◆ 20 40 60 80 | | SAMPLE TYPE | Sample # | USC | SOIL SYMBOL | SOIL DESCRIPTION | Depth (m) |
|-----------|---|------|--|--|-------------|----------|-----|-------------|---------------------------------------|-----------|
| | PLASTIC | M.C. | LIQUID | ■ Percent Gravel ■ 20 40 60 80 | | | | | | |
| 0 | | | | | | | | | -grindy drilling | 0 |
| 1 | | | | | | | | | -free water -no sample, washed off | 1 |
| 2 | | | | | | | | | END HOLE at 1.9m -refusal | 2 |
| 3 | | | | | | | | | | 3 |
| 4 | | | | | | | | | | 4 |
| 5 | | | | | | | | | | 5 |
| 6 | | | | | | | | | | 6 |
| 7 | | | | | | | | | | 7 |
| 8 | | | | | | | | | | 8 |
| 9 | | | | | | | | | | 9 |
| 10 | | | | | | | | | | 10 |

ESE IMPORT LOG GRAVEL 016-020.GPJ YTG.GDT 6/29/17



Highways and Public Works
Transportation Engineering Branch

| | |
|---------------|--------------------------|
| LOGGED BY: DT | COMPLETION DEPTH: 1.90 m |
| REVIEWED BY: | COMPLETION DATE: 8/24/88 |
| | Page 1 of 1 |

| | | |
|--|---------------------------------------|-----------------------|
| SUBSURFACE EXPLORATION AND TEST REPORT | ALASKA HIGHWAY GRANULAR INVESTIGATION | BOREHOLE NO: 017-14 |
| PWC CAPITAL - YT | A/H KM 1747 LHS | PROJECT NO: 115 G - 1 |
| DRILL: B30 150mm Dia. SOLID STEM AUGER | LOCATION: SEE PLAN | ELEVATION: 0 m |

SAMPLE TYPE RETURN S.P.T. Auger BULK TUBE CORE

| Depth (m) | ▲ Percent Fines ▲ 20 40 60 80 | | ◆ Percent Sand ◆ 20 40 60 80 | | SAMPLE TYPE | Sample # | USC | SOIL SYMBOL | SOIL DESCRIPTION | Depth (m) |
|-----------|---|------|--|--|-------------|----------|-----|-------------|--|-----------|
| | PLASTIC | M.C. | LIQUID | ■ Percent Gravel ■ 20 40 60 80 | | | | | | |
| 0 | | | | | | | | | GRAVELY SAND | 0 |
| | | | | | | | | | ORGANIC SOIL -black -water level | |
| | | | | | | | | | END HOLE | |
| 1 | | | | | | | | | | 1 |
| 2 | | | | | | | | | | 2 |
| 3 | | | | | | | | | | 3 |
| 4 | | | | | | | | | | 4 |
| 5 | | | | | | | | | | 5 |
| 6 | | | | | | | | | | 6 |
| 7 | | | | | | | | | | 7 |
| 8 | | | | | | | | | | 8 |
| 9 | | | | | | | | | | 9 |
| 10 | | | | | | | | | | 10 |

ESE IMPORT LOG GRAVEL 016-020.GPJ YTG.GDT 6/29/17



Highways and Public Works
Transportation Engineering Branch

| | |
|---------------|--------------------------|
| LOGGED BY: DT | COMPLETION DEPTH: 1.40 m |
| REVIEWED BY: | COMPLETION DATE: 8/24/88 |
| | Page 1 of 1 |