

SUBSURFACE EXPLORATION AND TEST REPORT	ALASKA HIGHWAY PRE-ENGINEERING	BOREHOLE NO: 034-01
PWC - CAPITAL Y.T.	A/H KM 1797 LHS	PROJECT NO: 115-G-01
BACKHOE: CAT 225	LOCATION: See Plan	ELEVATION: 0 m

SAMPLE TYPE RETURN S.P.T. Auger BULK TUBE CORE

Depth (m)	▲ Percent Fines ▲ 20 40 60 80		◆ Percent Sand ◆ 20 40 60 80		SAMPLE TYPE	Sample #	USC	SOIL SYMBOL	SOIL DESCRIPTION	Depth (m)
	PLASTIC M.C. LIQUID 20 40 60 80		■ Percent Gravel ■ 20 40 60 80							
0									ORGANIC MATERIAL SILTY SAND -light brown -moist -fine to coarse grading -odd 150mm cobble	0
1									SANDY SILT -light brown -moist -easy digging 1.3 to 1.8m ASH, SAND AND ORGANICS	1
2									SANDY SILT -light brown -moist	2
3										3
4									FINE GRAVELLY SAND -moist	4
5									END HOLE at 4.2m -poplar cover -rolling terrain, aprox. 3.0m relief -hole on pipeline ROW	5

ESE IMPORT LOG GRAVEL 031-035.GPJ YTG.GDT 6/14/17

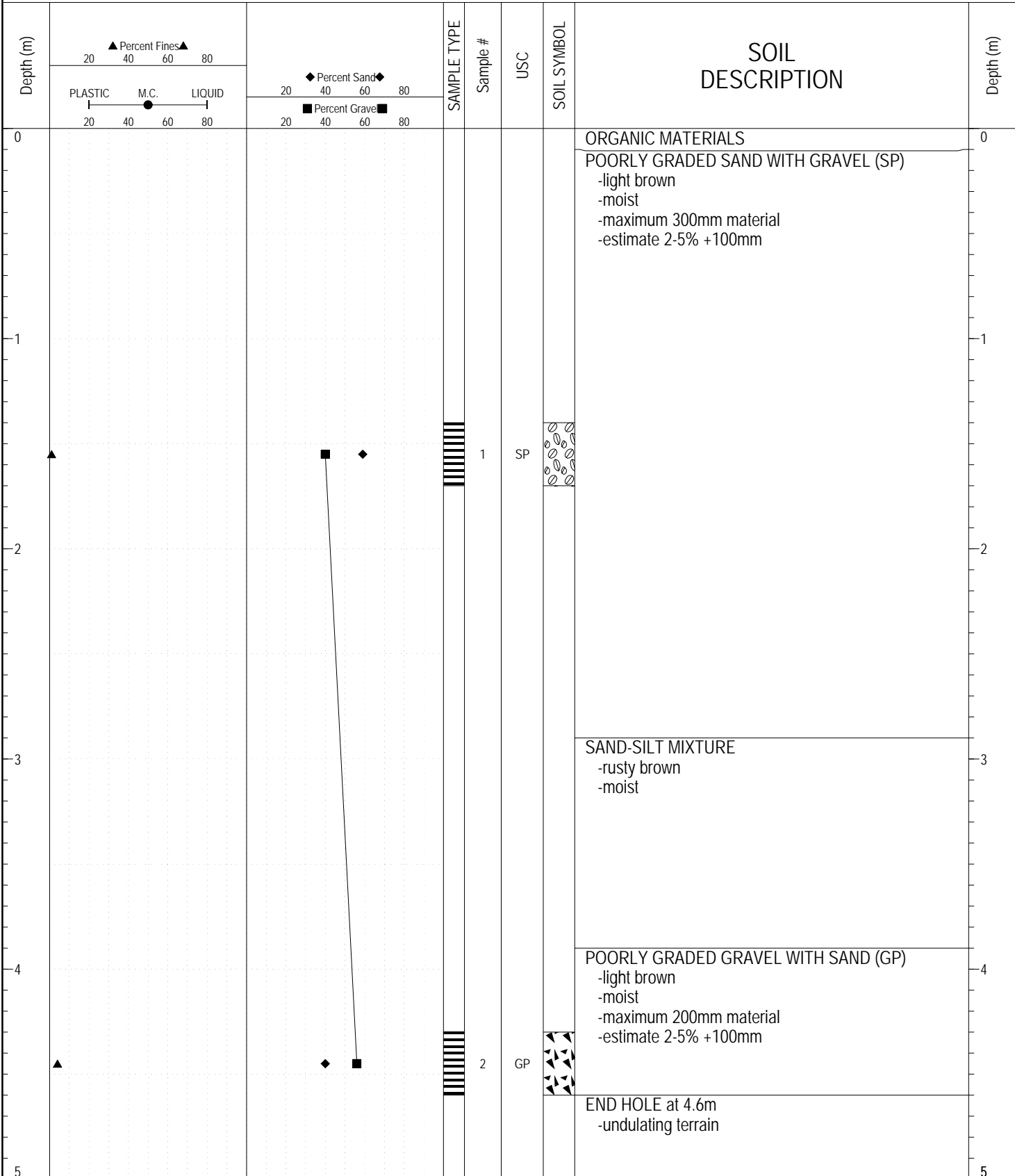


Highways and Public Works
Transportation Engineering Branch

LOGGED BY: CB	COMPLETION DEPTH: 4.20 m
REVIEWED BY:	COMPLETION DATE: 10/30/88
	Page 1 of 1

SUBSURFACE EXPLORATION AND TEST REPORT	ALASKA HIGHWAY PRE-ENGINEERING	BOREHOLE NO: 034-02
PWC - CAPITAL Y.T.	A/H KM 1797 LHS	PROJECT NO: 115-G-01
BACKHOE: CAT 225	LOCATION: See Plan	ELEVATION: 0 m

SAMPLE TYPE RETURN S.P.T. Auger BULK TUBE CORE



ESE IMPORT LOG GRAVEL 031-035.GPJ YTG.GDT 6/14/17

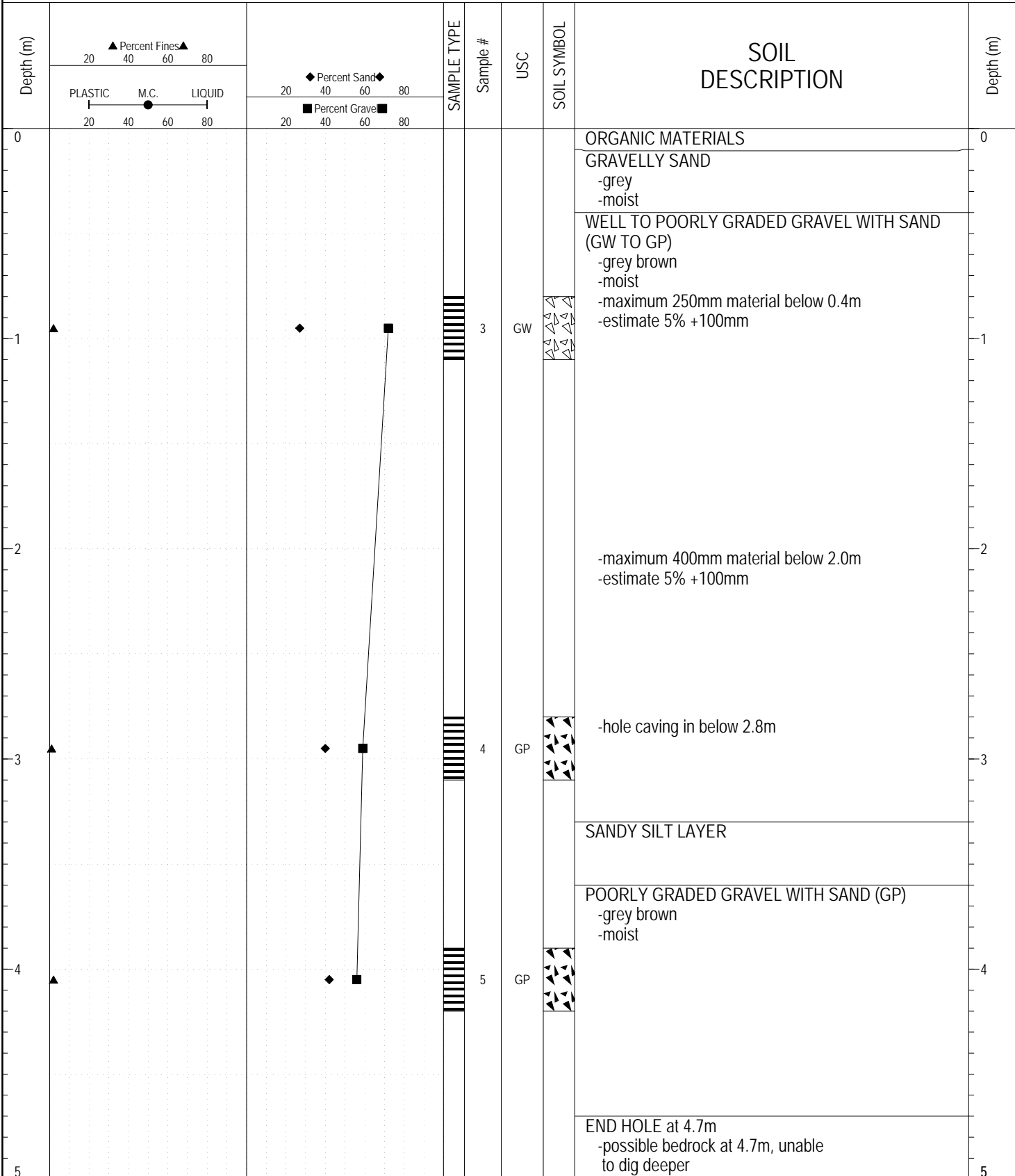


Highways and Public Works
Transportation Engineering Branch

LOGGED BY: CB	COMPLETION DEPTH: 4.60 m
REVIEWED BY:	COMPLETION DATE: 10/30/88
	Page 1 of 1

SUBSURFACE EXPLORATION AND TEST REPORT	ALASKA HIGHWAY PRE-ENGINEERING	BOREHOLE NO: 034-03
PWC - CAPITAL Y.T.	A/H KM 1797 LHS	PROJECT NO: 115-G-01
BACKHOE: CAT 225	LOCATION: See Plan	ELEVATION: 0 m

SAMPLE TYPE RETURN S.P.T. Auger BULK TUBE CORE



ESE IMPORT LOG GRAVEL 031-035.GPJ YTG.GDT 6/14/17

SUBSURFACE EXPLORATION AND TEST REPORT	ALASKA HIGHWAY PRE-ENGINEERING	BOREHOLE NO: 034-03
PWC - CAPITAL Y.T.	A/H KM 1797 LHS	PROJECT NO: 115-G-01
BACKHOE: CAT 225	LOCATION: See Plan	ELEVATION: 0 m

SAMPLE TYPE RETURN S.P.T. Auger BULK TUBE CORE

Depth (m)	▲ Percent Fines ▲ 20 40 60 80		◆ Percent Sand ◆ 20 40 60 80		SAMPLE TYPE	Sample #	USC	SOIL SYMBOL	SOIL DESCRIPTION	Depth (m)
	PLASTIC M.C. LIQUID 20 40 60 80		■ Percent Gravel ■ 20 40 60 80							
5									-aprox. 4.0m relief, rolling	5
6										6
7										7
8										8
9										9
10										10

ESE IMPORT LOG GRAVEL 031-035.GPJ YTG.GDT 6/14/17



Highways and Public Works
Transportation Engineering Branch

LOGGED BY: CB	COMPLETION DEPTH: 4.70 m
REVIEWED BY:	COMPLETION DATE: 10/30/88
	Page 2 of 2

SUBSURFACE EXPLORATION AND TEST REPORT	ALASKA HIGHWAY PRE-ENGINEERING	BOREHOLE NO: 034-04
PWC - CAPITAL Y.T.	A/H KM 1797 LHS	PROJECT NO: 115-G-01
BACKHOE: CAT 225	LOCATION: See Plan	ELEVATION: 0 m

SAMPLE TYPE RETURN S.P.T. Auger BULK TUBE CORE

Depth (m)	▲ Percent Fines ▲		◆ Percent Sand ◆		SAMPLE TYPE	Sample #	USC	SOIL SYMBOL	SOIL DESCRIPTION	Depth (m)
	20	40	60	80						
0	PLASTIC M.C. LIQUID								ORGANIC MATERIALS	0
									COARSE SAND WITH TRACE OF GRAVEL -light brown -moist -odd 200mm cobble	
1										1
2									GRAVEL WITH SAND	2
									GRANODIORITE SHELF -hoe chipping out fractured pieces of granodiorite	
3									END HOLE at 2.6m -unable to dig deeper -possible bedrock -aprox. 5.0m relief	3
4										4
5										5

ESE IMPORT LOG GRAVEL 031-035.GPJ YTG.GDT 6/14/17

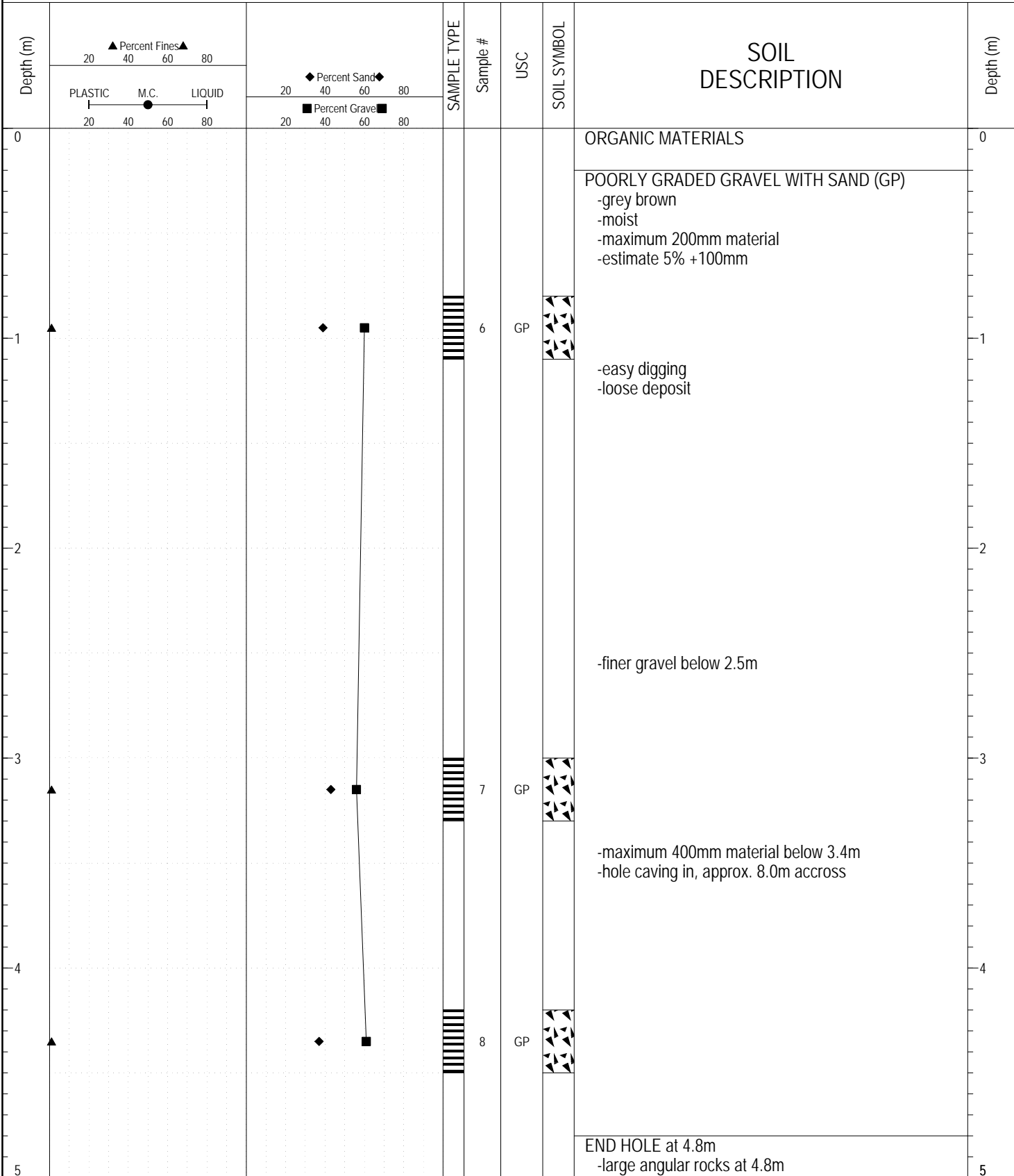


Highways and Public Works
Transportation Engineering Branch

LOGGED BY: CB	COMPLETION DEPTH: 2.60 m
REVIEWED BY:	COMPLETION DATE: 10/30/88
	Page 1 of 1

SUBSURFACE EXPLORATION AND TEST REPORT	ALASKA HIGHWAY PRE-ENGINEERING	BOREHOLE NO: 034-05
PWC - CAPITAL Y.T.	A/H KM 1797 LHS	PROJECT NO: 115-G-01
BACKHOE: CAT 225	LOCATION: See Plan	ELEVATION: 0 m

SAMPLE TYPE RETURN S.P.T. Auger BULK TUBE CORE



ESE IMPORT LOG GRAVEL 031-035.GPJ YTG.GDT 6/14/17



Highways and Public Works
Transportation Engineering Branch

LOGGED BY: CB	COMPLETION DEPTH: 4.80 m
REVIEWED BY:	COMPLETION DATE: 10/31/88
	Page 1 of 2

SUBSURFACE EXPLORATION AND TEST REPORT	ALASKA HIGHWAY PRE-ENGINEERING	BOREHOLE NO: 034-05
PWC - CAPITAL Y.T.	A/H KM 1797 LHS	PROJECT NO: 115-G-01
BACKHOE: CAT 225	LOCATION: See Plan	ELEVATION: 0 m

SAMPLE TYPE RETURN S.P.T. Auger BULK TUBE CORE

Depth (m)	▲ Percent Fines ▲		◆ Percent Sand ◆		SAMPLE TYPE	Sample #	USC	SOIL SYMBOL	SOIL DESCRIPTION	Depth (m)
	20	40	60	80						
5	PLASTIC M.C. LIQUID 20 40 60 80		20 40 60 80 20 40 60 80						-rolling terrain	5
6										6
7										7
8										8
9										9
10										10

ESE IMPORT LOG GRAVEL 031-035.GPJ YTG.GDT 6/14/17

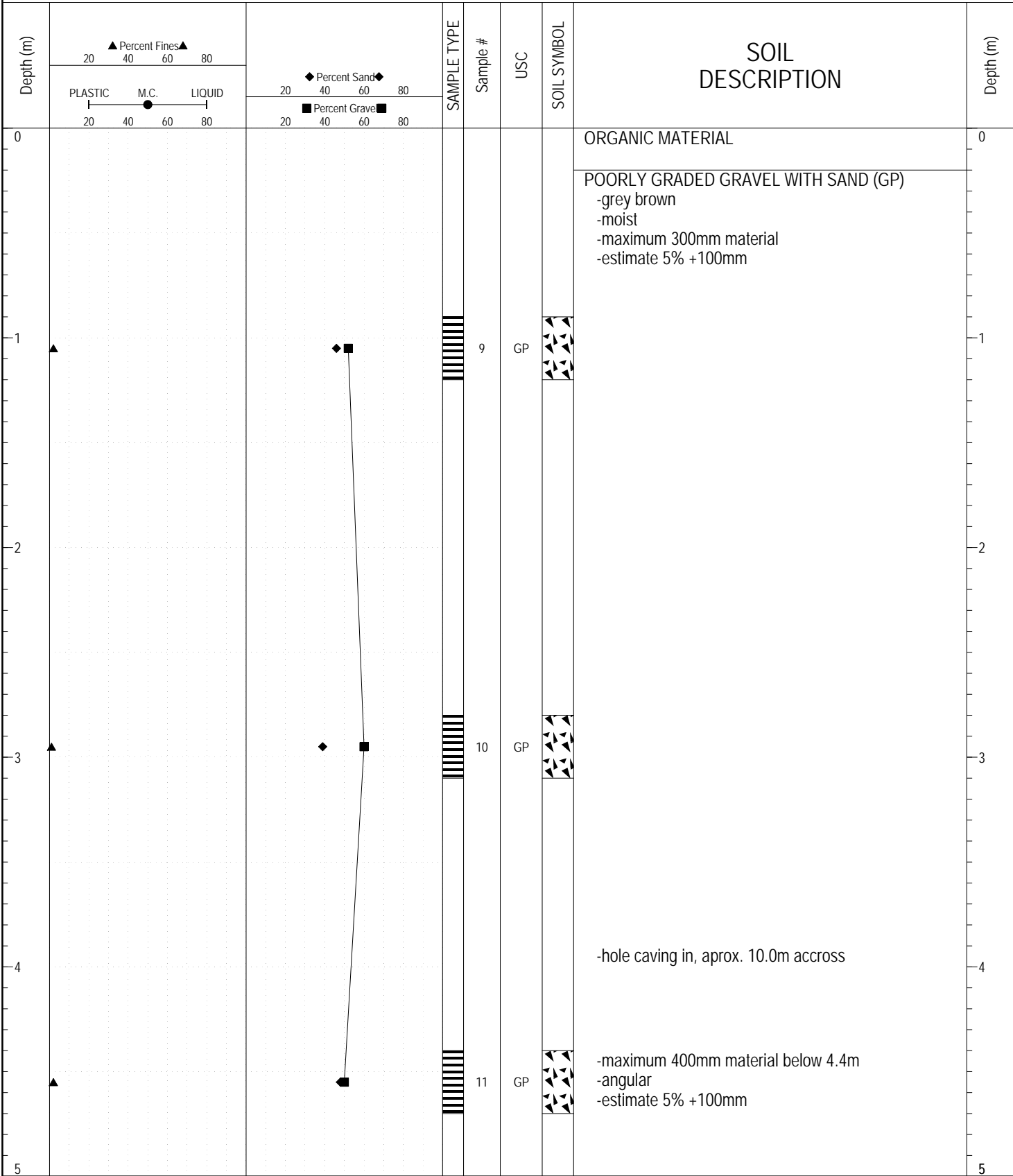


Highways and Public Works
Transportation Engineering Branch

LOGGED BY: CB	COMPLETION DEPTH: 4.80 m
REVIEWED BY:	COMPLETION DATE: 10/31/88
	Page 2 of 2

SUBSURFACE EXPLORATION AND TEST REPORT	ALASKA HIGHWAY PRE-ENGINEERING	BOREHOLE NO: 034-06
PWC - CAPITAL Y.T.	A/H KM 1797 LHS	PROJECT NO: 115-G-01
BACKHOE: CAT 225	LOCATION: See Plan	ELEVATION: 0 m

SAMPLE TYPE RETURN S.P.T. Auger BULK TUBE CORE



ESE IMPORT LOG GRAVEL 031-035.GPJ YTG.GDT 6/14/17

SUBSURFACE EXPLORATION AND TEST REPORT	ALASKA HIGHWAY PRE-ENGINEERING	BOREHOLE NO: 034-06
PWC - CAPITAL Y.T.	A/H KM 1797 LHS	PROJECT NO: 115-G-01
BACKHOE: CAT 225	LOCATION: See Plan	ELEVATION: 0 m

SAMPLE TYPE RETURN S.P.T. Auger BULK TUBE CORE

Depth (m)	▲ Percent Fines ▲ 20 40 60 80		◆ Percent Sand ◆ 20 40 60 80		SAMPLE TYPE	Sample #	USC	SOIL SYMBOL	SOIL DESCRIPTION	Depth (m)
	PLASTIC M.C. LIQUID 20 40 60 80		■ Percent Gravel ■ 20 40 60 80							
5									END HOLE at 5.0m -photo #14	5
6										6
7										7
8										8
9										9
10										10

ESE IMPORT LOG GRAVEL 031-035.GPJ YTG.GDT 6/14/17

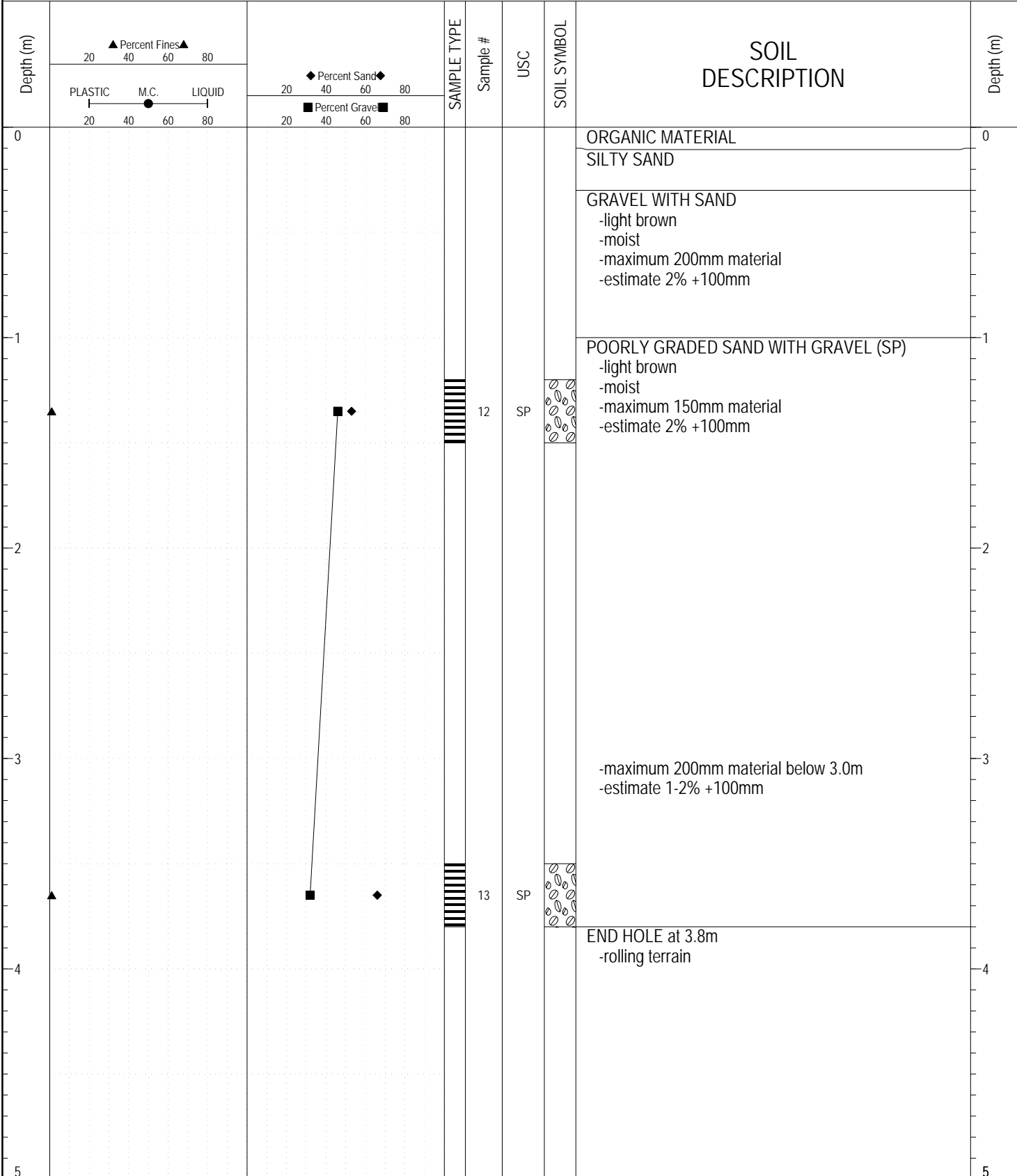


Highways and Public Works
Transportation Engineering Branch

LOGGED BY: CB	COMPLETION DEPTH: 5.00 m
REVIEWED BY:	COMPLETION DATE: 10/31/88
	Page 2 of 2

SUBSURFACE EXPLORATION AND TEST REPORT	ALASKA HIGHWAY PRE-ENGINEERING	BOREHOLE NO: 034-07
PWC - CAPITAL Y.T.	A/H KM 1797 LHS	PROJECT NO: 115-G-01
BACKHOE: CAT 225	LOCATION: See Plan	ELEVATION: 0 m

SAMPLE TYPE RETURN S.P.T. Auger BULK TUBE CORE



ESE IMPORT LOG GRAVEL 031-035.GPJ YTG.GDT 6/14/17

SUBSURFACE EXPLORATION AND TEST REPORT	ALASKA HIGHWAY PRE-ENGINEERING	BOREHOLE NO: 034-08
PWC - CAPITAL Y.T.	A/H KM 1797 LHS	PROJECT NO: 115-G-01
BACKHOE: CAT 225	LOCATION: See Plan	ELEVATION: 0 m

SAMPLE TYPE RETURN S.P.T. Auger BULK TUBE CORE

Depth (m)	▲ Percent Fines ▲ 20 40 60 80		◆ Percent Sand ◆ 20 40 60 80		SAMPLE TYPE	Sample #	USC	SOIL SYMBOL	SOIL DESCRIPTION	Depth (m)
	PLASTIC M.C. LIQUID 20 40 60 80		■ Percent Gravel ■ 20 40 60 80							
0									ORGANIC MATERIAL SAND WITH TRACE OF GRAVEL -light brown -moist	0
1									WEATHERED ROCK -angular granodiorite	1
2									SILTY SAND -light brown -moist -angular rock with the silty sand	2
3									END HOLE at 2.8m -frozen at 2.8m, no visible ice -rolling terrain	3
4										4
5										5

ESE IMPORT LOG GRAVEL 031-035.GPJ YTG.GDT 6/14/17

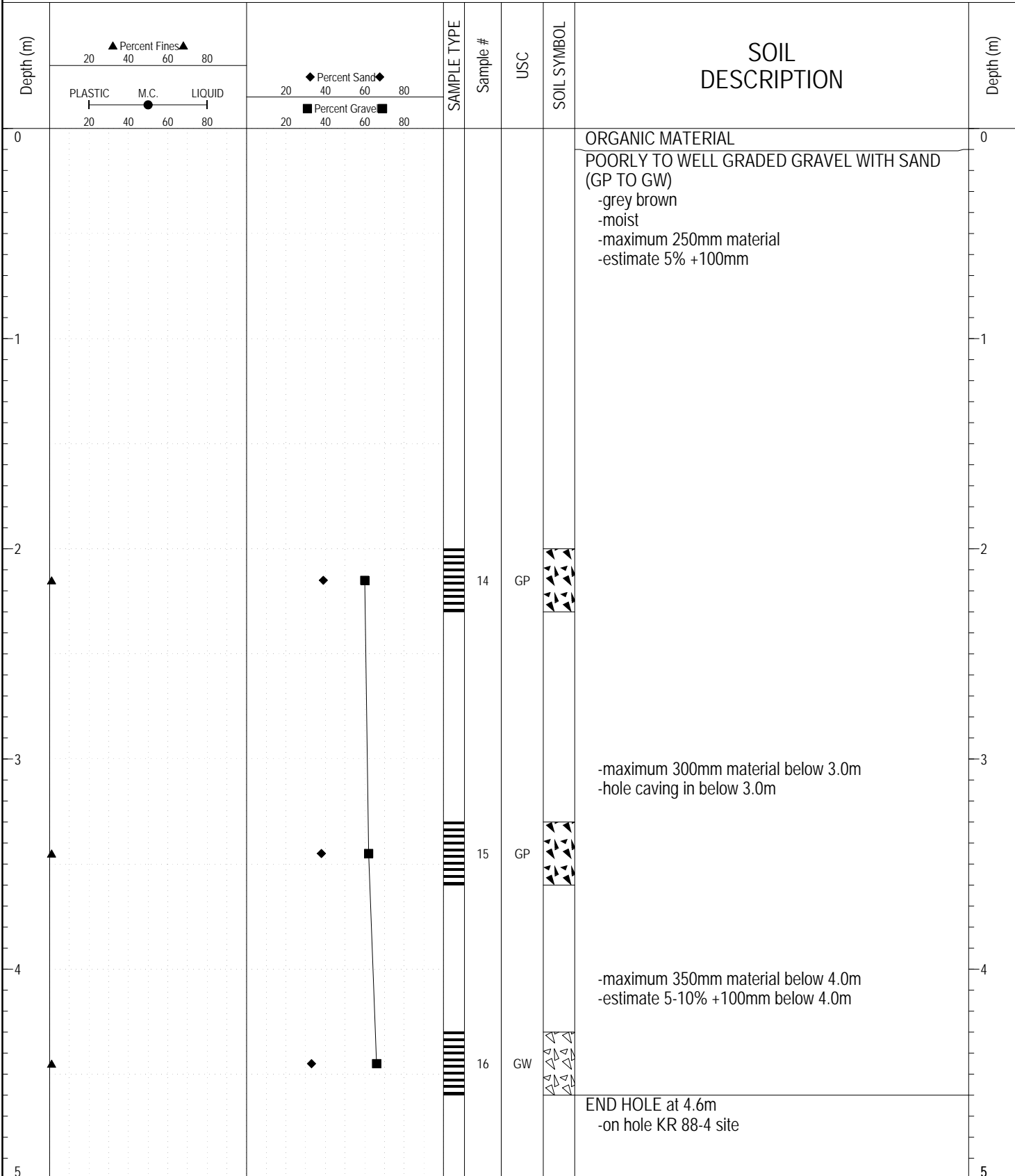


Highways and Public Works
Transportation Engineering Branch

LOGGED BY: CB	COMPLETION DEPTH: 2.80 m
REVIEWED BY:	COMPLETION DATE: 10/31/88
	Page 1 of 1

SUBSURFACE EXPLORATION AND TEST REPORT	ALASKA HIGHWAY PRE-ENGINEERING	BOREHOLE NO: 034-09
PWC - CAPITAL Y.T.	A/H KM 1797 LHS	PROJECT NO: 115-G-01
BACKHOE: CAT 225	LOCATION: See Plan	ELEVATION: 0 m

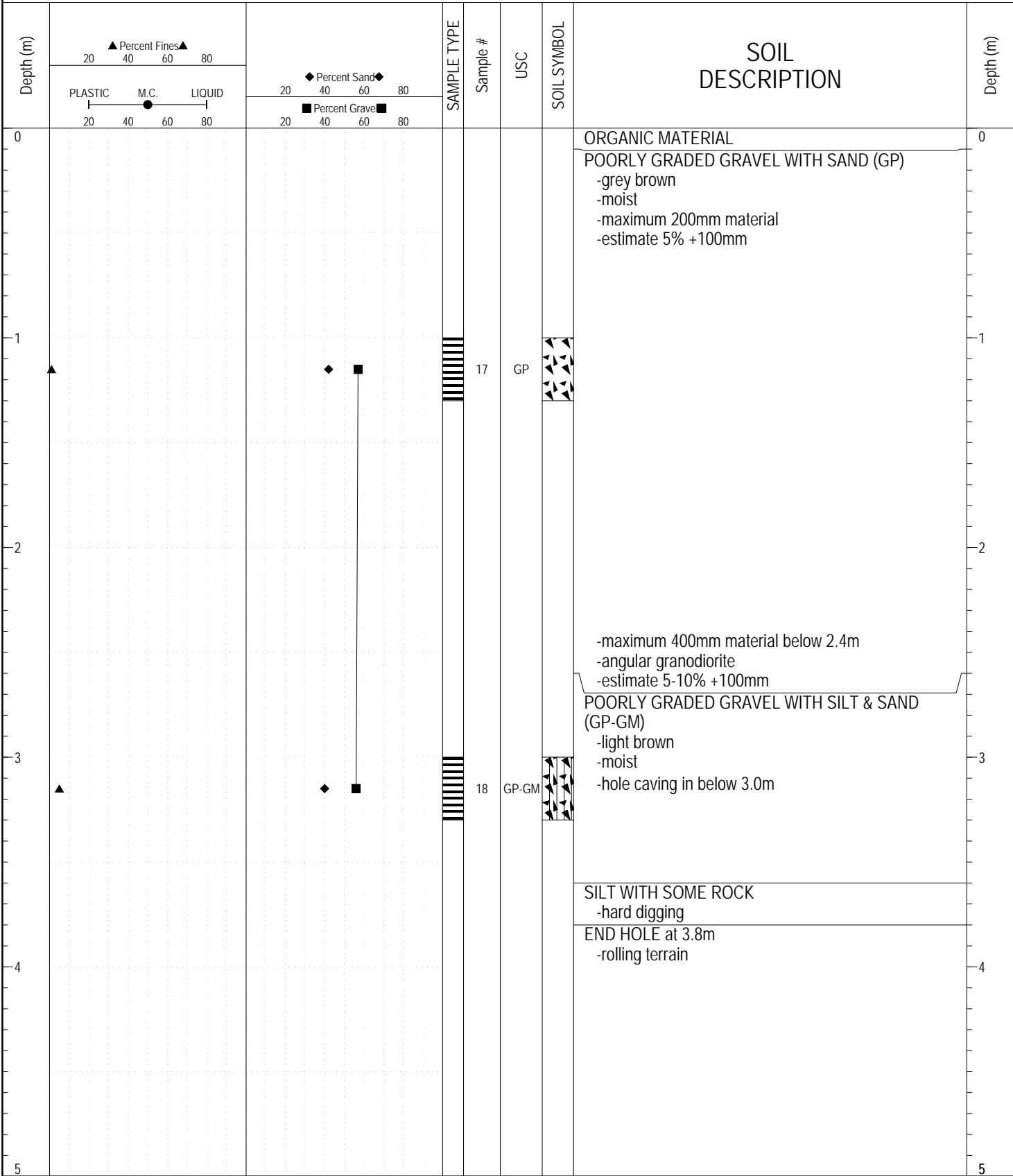
SAMPLE TYPE RETURN S.P.T. Auger BULK TUBE CORE



ESE IMPORT LOG GRAVEL 031-035.GPJ YTG.GDT 6/14/17

SUBSURFACE EXPLORATION AND TEST REPORT	ALASKA HIGHWAY PRE-ENGINEERING	BOREHOLE NO: 034-10
PWC - CAPITAL Y.T.	A/H KM 1797 LHS	PROJECT NO: 115-G-01
BACKHOE: CAT 225	LOCATION: See Plan	ELEVATION: 0 m

SAMPLE TYPE RETURN S.P.T. Auger BULK TUBE CORE



ESE IMPORT LOG GRAVEL 031-035.GPJ YTG.GDT 6/14/17

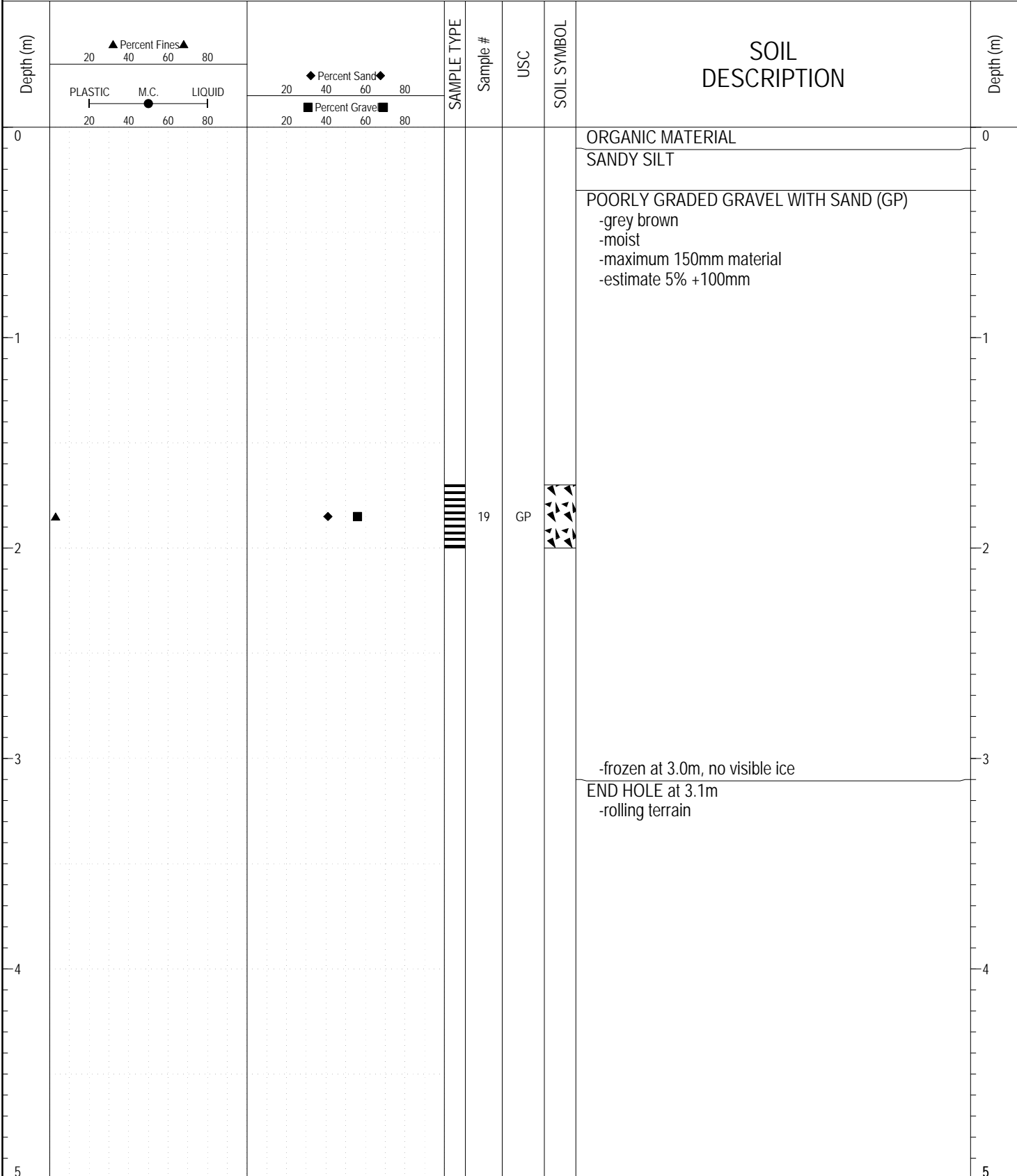


Highways and Public Works
Transportation Engineering Branch

LOGGED BY: CB	COMPLETION DEPTH: 3.80 m
REVIEWED BY:	COMPLETION DATE: 10/31/88
	Page 1 of 1

SUBSURFACE EXPLORATION AND TEST REPORT	ALASKA HIGHWAY PRE-ENGINEERING	BOREHOLE NO: 034-11
PWC - CAPITAL Y.T.	A/H KM 1797 LHS	PROJECT NO: 115-G-01
BACKHOE: CAT 225	LOCATION: See Plan	ELEVATION: 0 m

SAMPLE TYPE RETURN S.P.T. Auger BULK TUBE CORE



ESE IMPORT LOG GRAVEL 031-035.GPJ YTG.GDT 6/14/17



Highways and Public Works
Transportation Engineering Branch

LOGGED BY: CB	COMPLETION DEPTH: 3.10 m
REVIEWED BY:	COMPLETION DATE: 10/31/88
	Page 1 of 1

SUBSURFACE EXPLORATION AND TEST REPORT	ALASKA HIGHWAY PRE-ENGINEERING	BOREHOLE NO: 034-12
PWC - CAPITAL Y.T.	A/H KM 1797 LHS	PROJECT NO: 115-G-01
BACKHOE: CAT 225	LOCATION: See Plan	ELEVATION: 0 m

SAMPLE TYPE RETURN S.P.T. Auger BULK TUBE CORE

Depth (m)	▲ Percent Fines ▲ 20 40 60 80		◆ Percent Sand ◆ 20 40 60 80		SAMPLE TYPE	Sample #	USC	SOIL SYMBOL	SOIL DESCRIPTION	Depth (m)
	PLASTIC	M.C.	LIQUID	■ Percent Gravel ■ 20 40 60 80						
0									ORGANIC MATERIAL SILTY SAND	0
1						20	GP		POORLY GRADED GRAVEL WITH SAND (GP) -grey brown -moist -gap graded -maximum 300mm material -estimate 5-10% +100mm	1
2									-loose deposit below 2.0m	2
3									SAND -tan color SANDY CLAYEY SILT -moist -hole caving in	3
4									END HOLE at 3.4m -rolling 2.0m relief	4
5										5

ESE IMPORT LOG GRAVEL 031-035.GPJ YTG.GDT 6/14/17

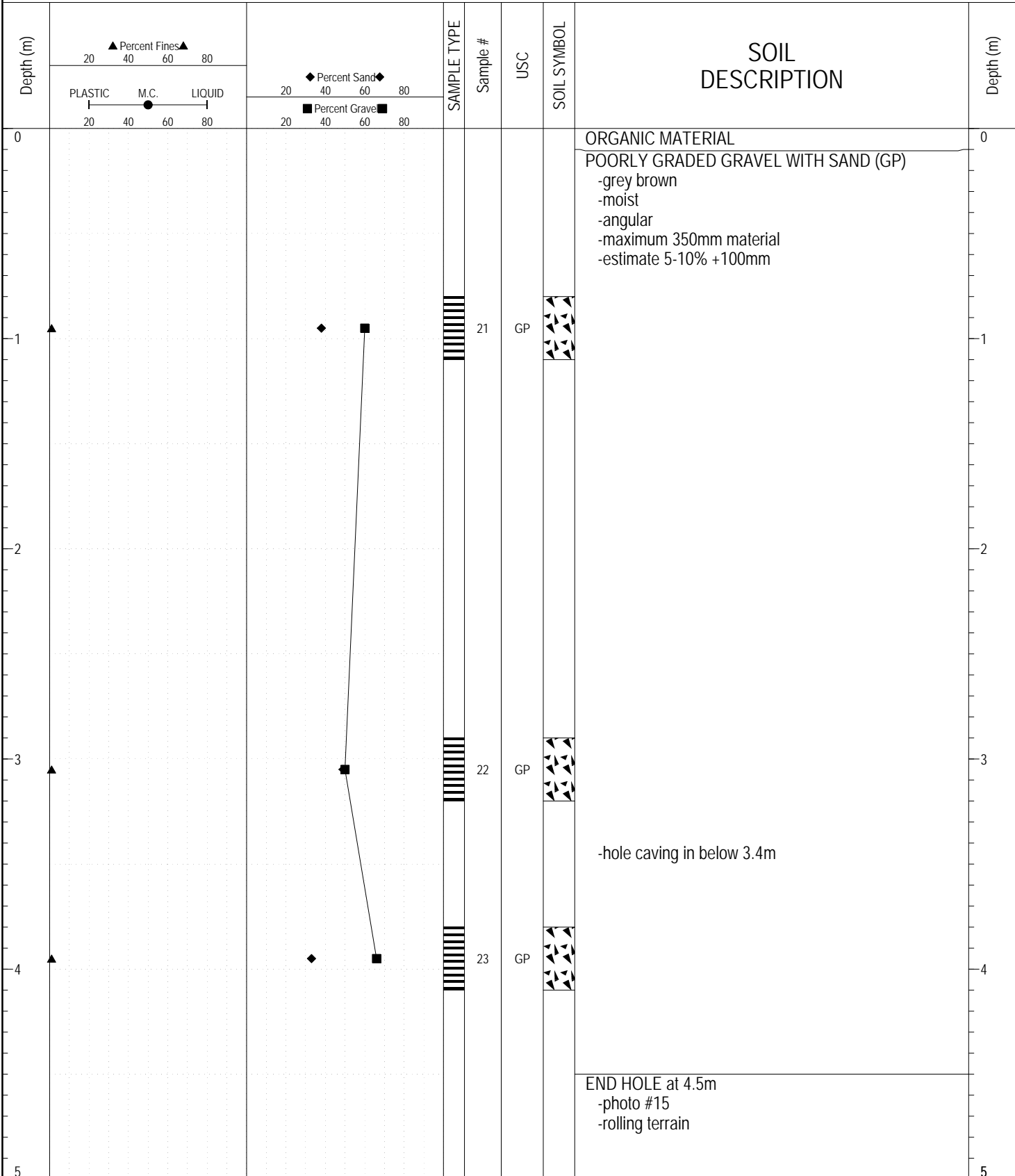


Highways and Public Works
Transportation Engineering Branch

LOGGED BY: CB	COMPLETION DEPTH: 3.40 m
REVIEWED BY:	COMPLETION DATE: 10/31/88
	Page 1 of 1

SUBSURFACE EXPLORATION AND TEST REPORT	ALASKA HIGHWAY PRE-ENGINEERING	BOREHOLE NO: 034-13
PWC - CAPITAL Y.T.	A/H KM 1797 LHS	PROJECT NO: 115-G-01
BACKHOE: CAT 225	LOCATION: See Plan	ELEVATION: 0 m

SAMPLE TYPE RETURN S.P.T. Auger BULK TUBE CORE



ESE IMPORT LOG GRAVEL 031-035.GPJ YTG.GDT 6/14/17



Highways and Public Works
Transportation Engineering Branch

LOGGED BY: CB	COMPLETION DEPTH: 4.50 m
REVIEWED BY:	COMPLETION DATE: 10/31/88
	Page 1 of 1

SUBSURFACE EXPLORATION AND TEST REPORT	ALASKA HIGHWAY PRE-ENGINEERING	BOREHOLE NO: 034-14
PWC - CAPITAL Y.T.	A/H KM 1797 LHS	PROJECT NO: 115-G-01
BACKHOE: CAT 225	LOCATION: See Plan	ELEVATION: 0 m

SAMPLE TYPE RETURN S.P.T. Auger BULK TUBE CORE

Depth (m)	▲ Percent Fines ▲		◆ Percent Sand ◆		SAMPLE TYPE	Sample #	USC	SOIL SYMBOL	SOIL DESCRIPTION	Depth (m)
	20	40	60	80						
0	PLASTIC M.C. LIQUID								ORGANIC MATERIAL SILT AND SAND WITH GRAVEL	0
1									SAND -tan color SILTY SAND -light brown -frozen, no visible ice	1
2									END HOLE at 1.6m	2
3										3
4										4
5										5

ESE IMPORT LOG GRAVEL 031-035.GPJ YTG.GDT 6/14/17

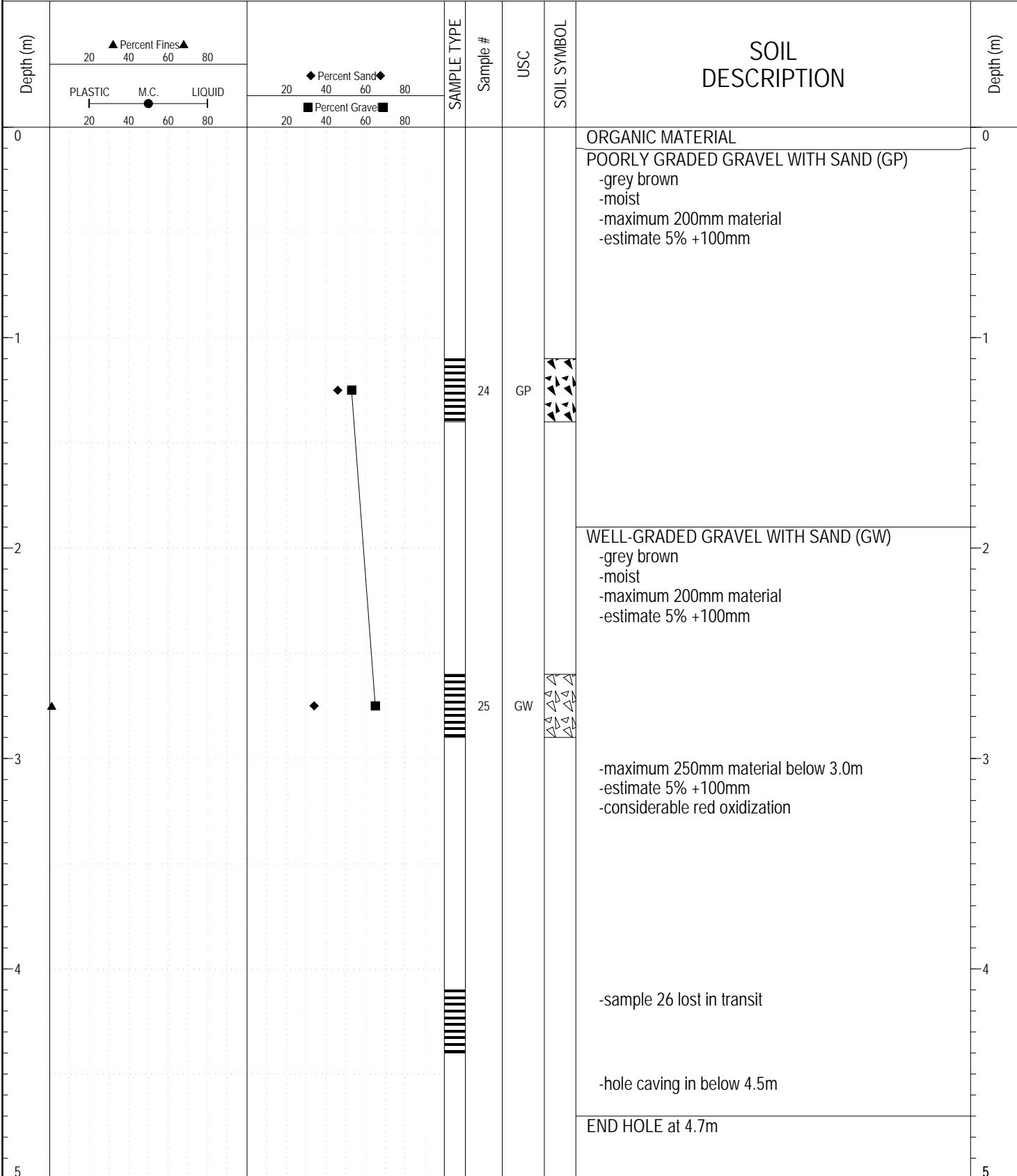


Highways and Public Works
Transportation Engineering Branch

LOGGED BY: CB	COMPLETION DEPTH: 1.60 m
REVIEWED BY:	COMPLETION DATE: 10/31/88
	Page 1 of 1

SUBSURFACE EXPLORATION AND TEST REPORT	ALASKA HIGHWAY PRE-ENGINEERING	BOREHOLE NO: 034-15
PWC - CAPITAL Y.T.	A/H KM 1797 LHS	PROJECT NO: 115-G-01
BACKHOE: CAT 225	LOCATION: See Plan	ELEVATION: 0 m

SAMPLE TYPE RETURN S.P.T. Auger BULK TUBE CORE



ESE IMPORT LOG GRAVEL 031-035.GPJ YTG.GDT 6/14/17



Highways and Public Works
Transportation Engineering Branch

LOGGED BY: CB	COMPLETION DEPTH: 4.70 m
REVIEWED BY:	COMPLETION DATE: 10/31/88
	Page 1 of 1