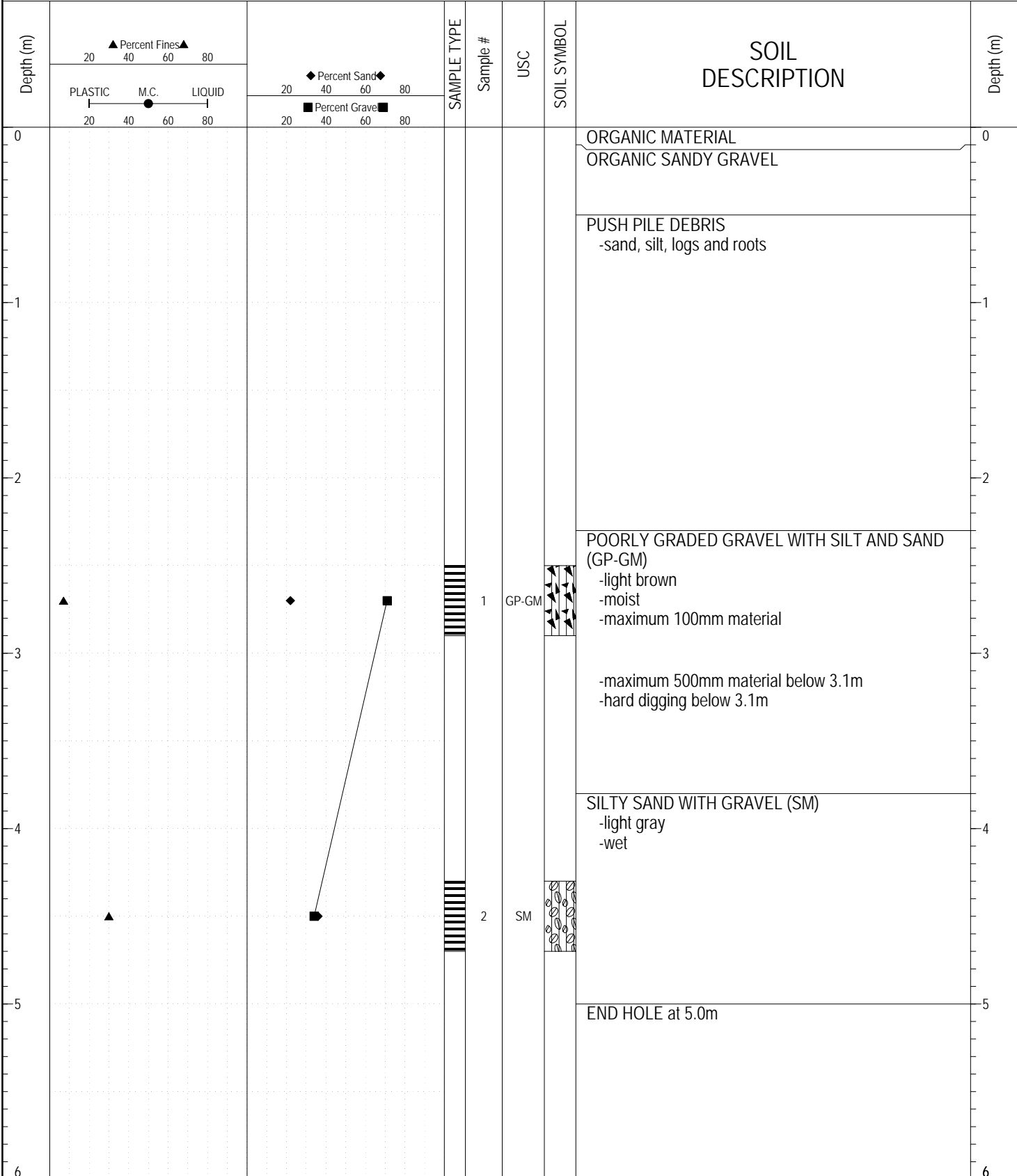


SAMPLE TYPE     RETURN     S.P.T.     Auger     BULK     TUBE     CORE



ESE IMPORT LOG GRAVEL 071-090.GPJ YTG.GDT 9/19/17

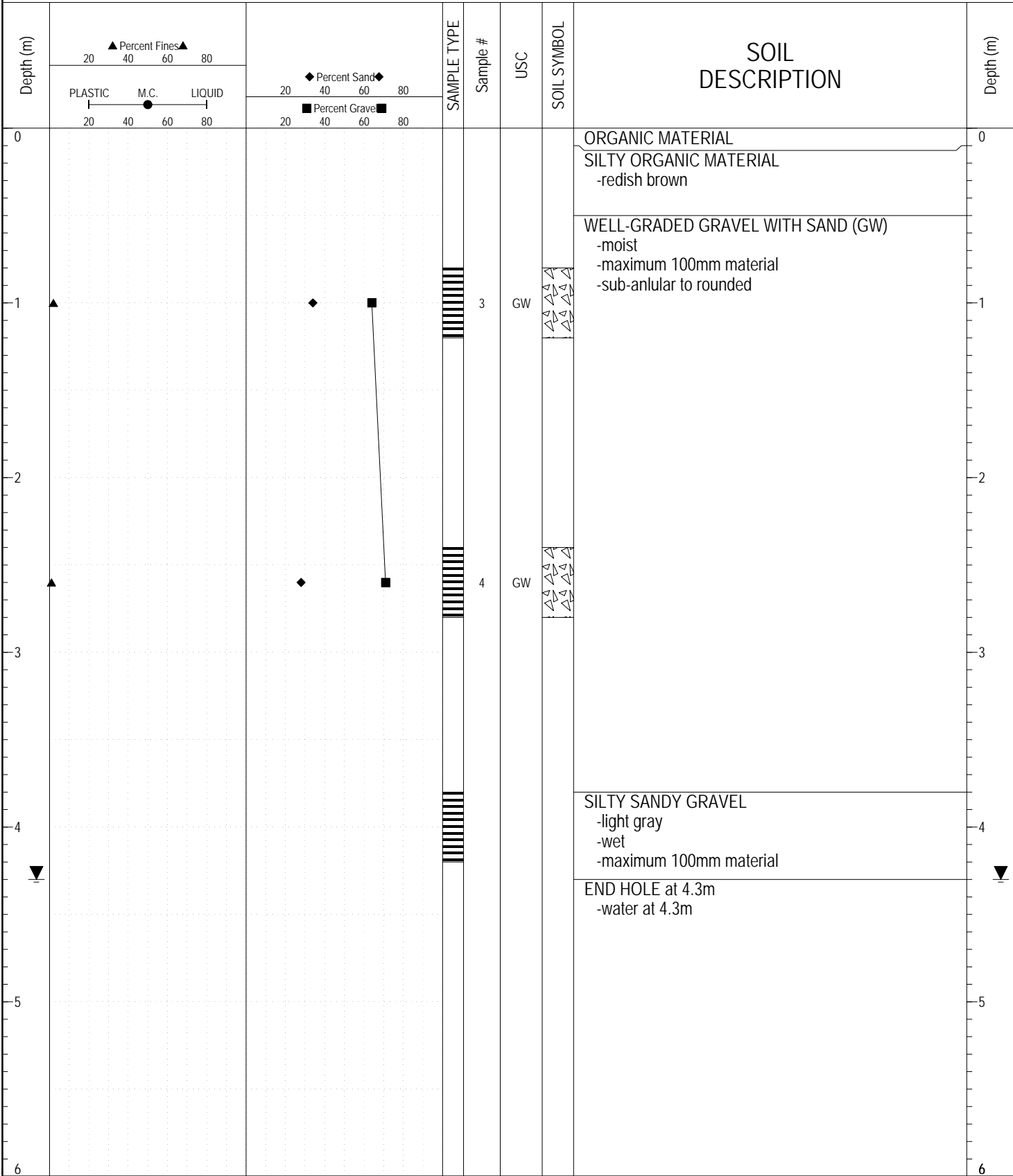


Highways and Public Works  
Transportation Engineering Branch

LOGGED BY: DT	COMPLETION DEPTH: 5.00 m
REVIEWED BY:	COMPLETION DATE: 7/19/90
	Page 1 of 1

SUBSURFACE EXPLORATION AND TEST REPORT	ALASKA HIGHWAY GRANULAR INVESTIGATION	BOREHOLE NO: 090-02
PWC/CAPITAL YUKON	A/H KM 1025 RHS	PROJECT NO: 105-A-07
BACKHOE: KOMATSU PC200	LOCATION: See Plan	ELEVATION: 0 m

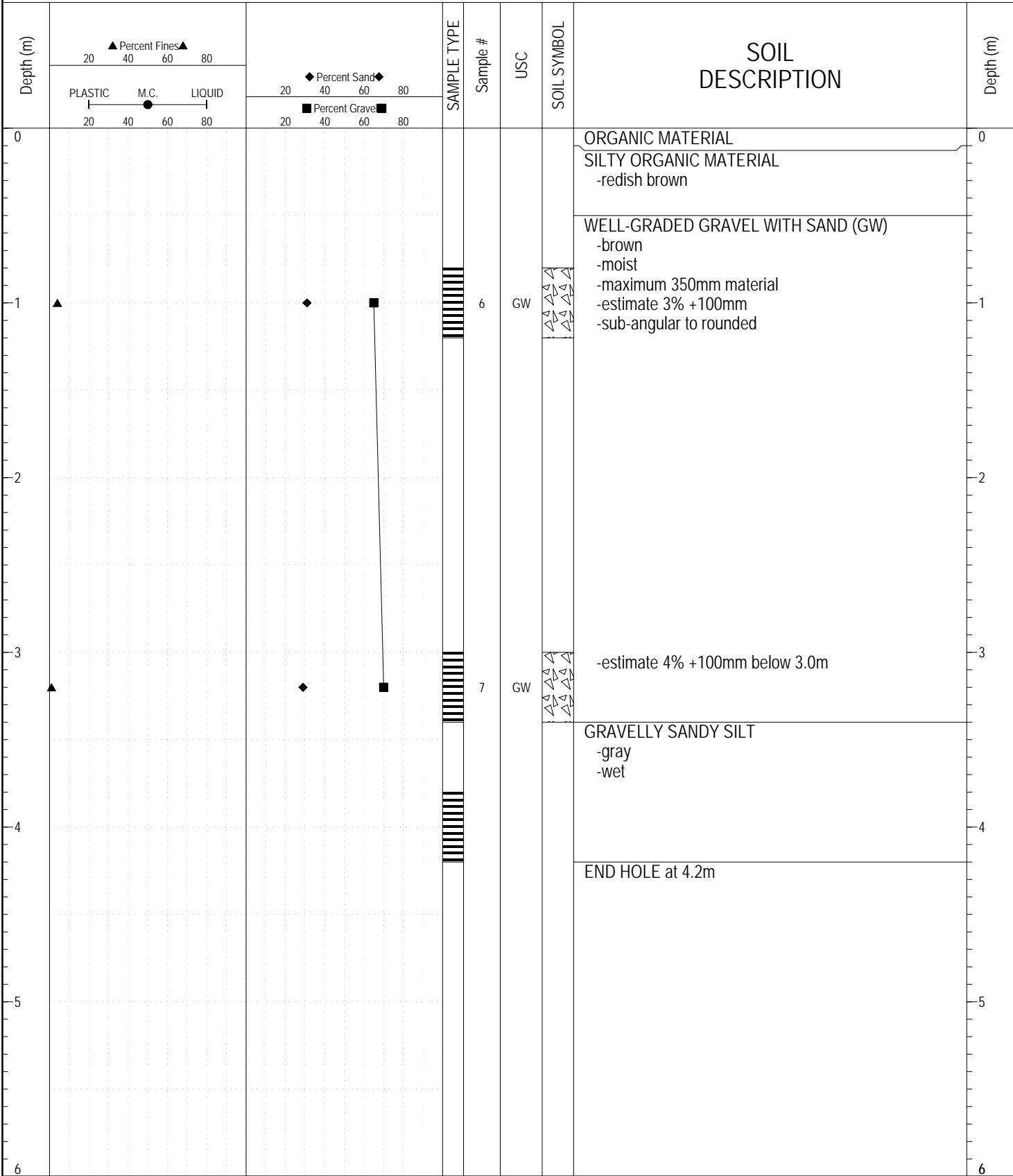
SAMPLE TYPE  RETURN  S.P.T.  Auger  BULK  TUBE  CORE



ESE IMPORT LOG GRAVEL 071-090.GPJ YTG.GDT 9/19/17

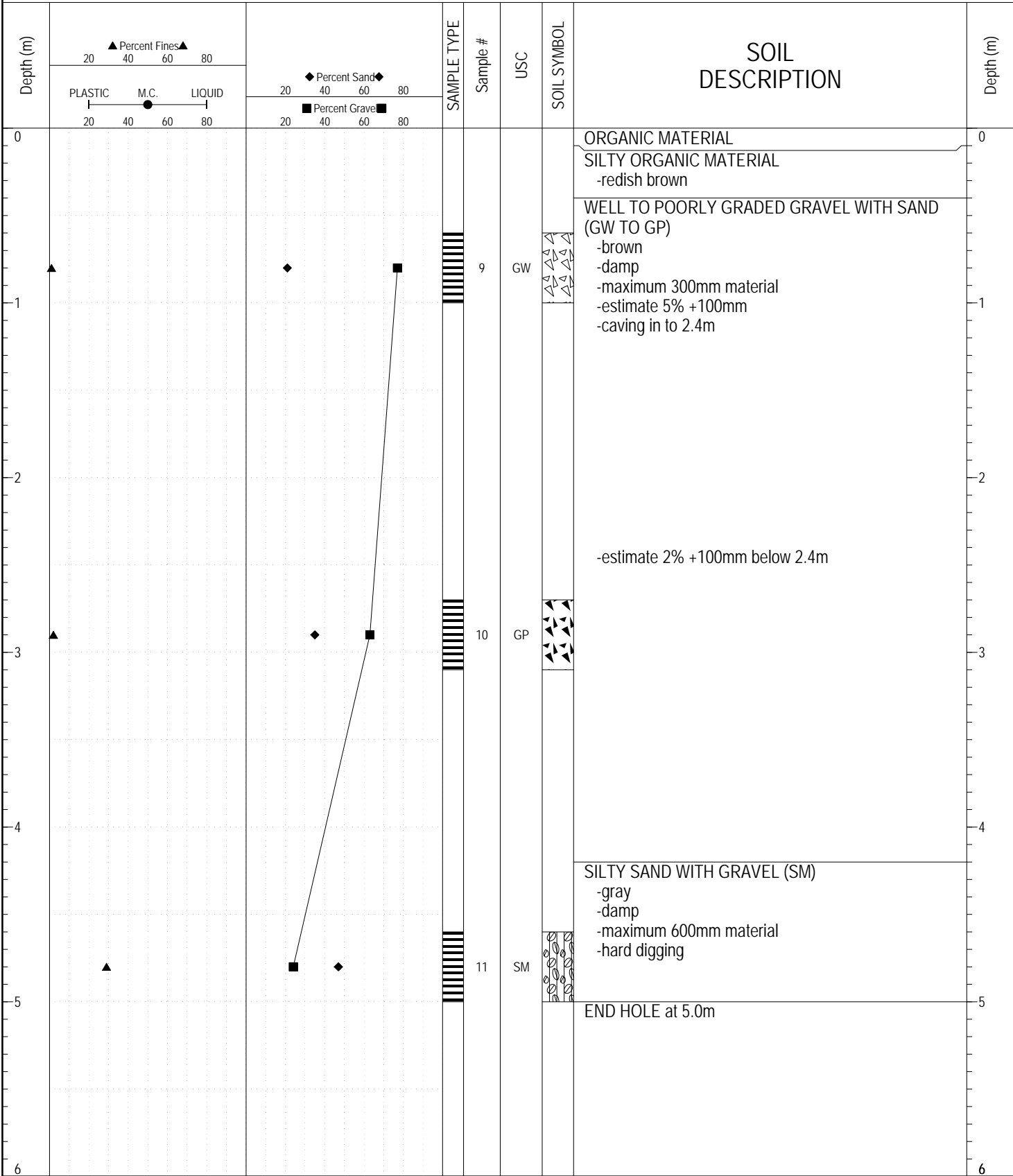
SUBSURFACE EXPLORATION AND TEST REPORT	ALASKA HIGHWAY GRANULAR INVESTIGATION	BOREHOLE NO: 090-03
PWC/CAPITAL YUKON	A/H KM 1025 RHS	PROJECT NO: 105-A-07
BACKHOE: KOMATSU PC200	LOCATION: See Plan	ELEVATION: 0 m

SAMPLE TYPE     RETURN     S.P.T.     Auger     BULK     TUBE     CORE



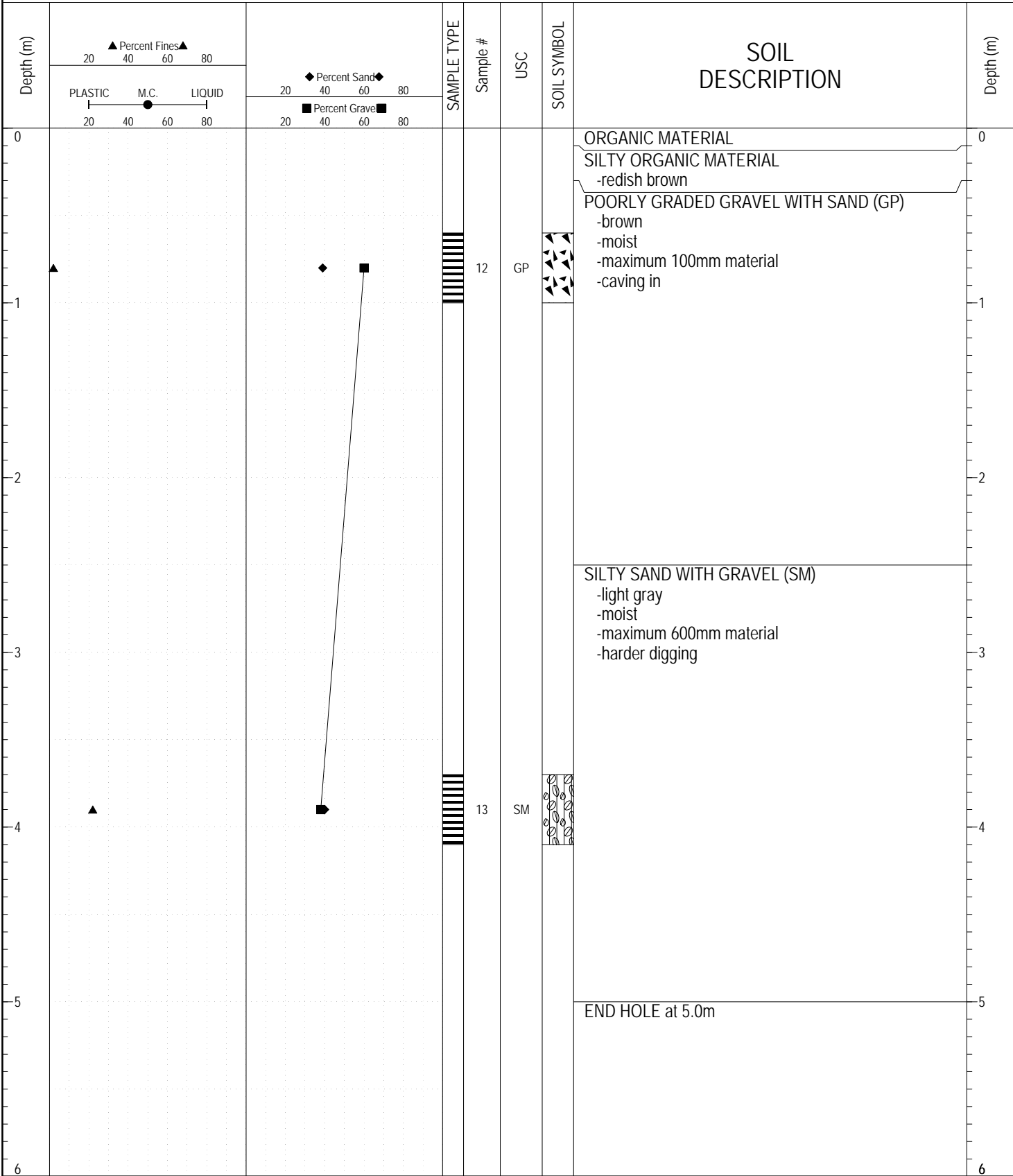
ESE IMPORT LOG GRAVEL 071-090.GPJ YTG.GDT 9/19/17

SAMPLE TYPE     RETURN     S.P.T.     Auger     BULK     TUBE     CORE



ESE IMPORT LOG GRAVEL 071-090.GPJ YTG.GDT 9/19/17

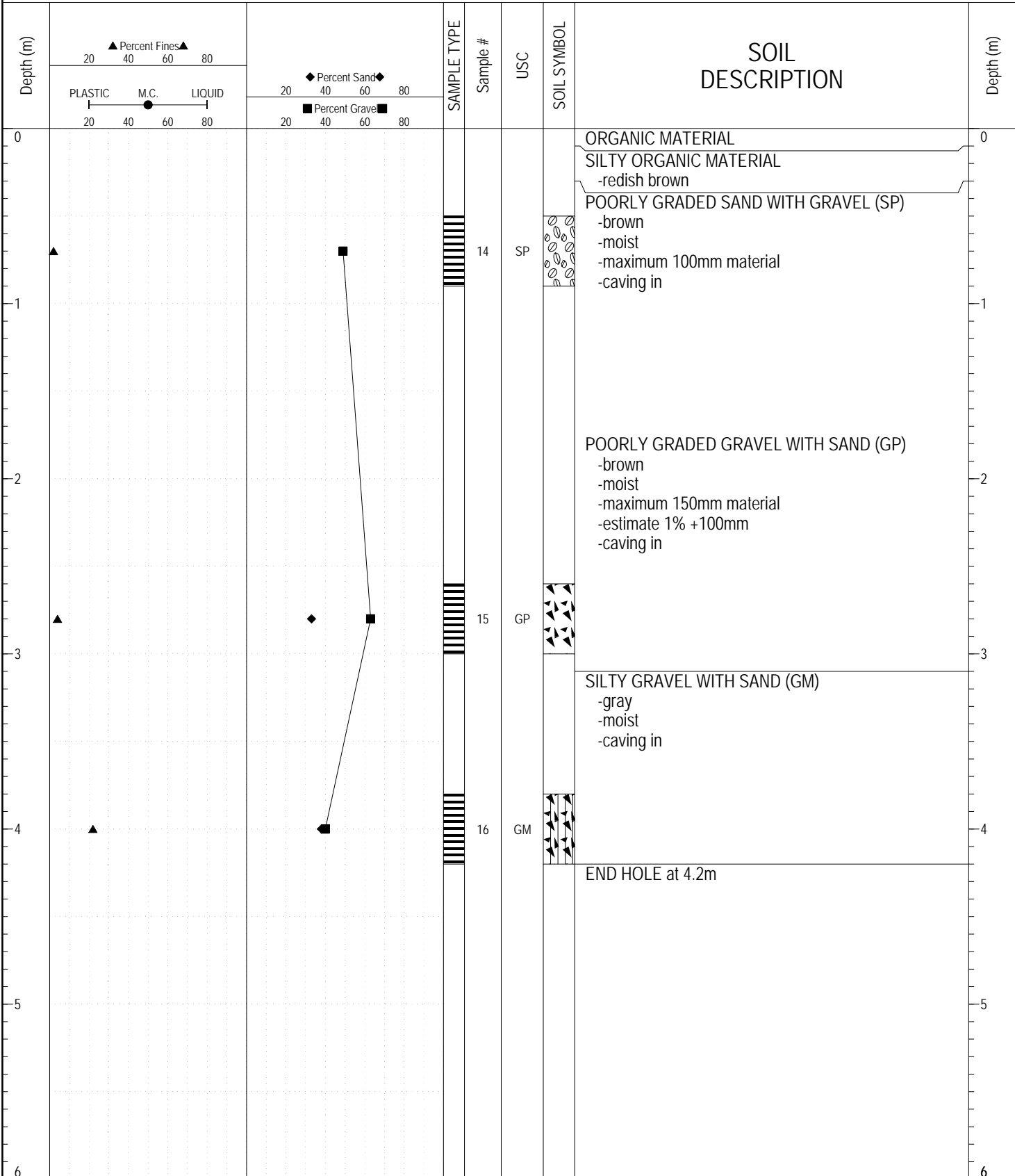
SAMPLE TYPE     RETURN     S.P.T.     Auger     BULK     TUBE     CORE



ESE IMPORT LOG GRAVEL 071-090.GPJ YTG.GDT 9/19/17

SUBSURFACE EXPLORATION AND TEST REPORT		ALASKA HIGHWAY GRANULAR INVESTIGATION	BOREHOLE NO: 090-06
PWC/CAPITAL YUKON		A/H KM 1025 RHS	PROJECT NO: 105-A-07
BACKHOE: KOMATSU PC200		LOCATION: See Plan	ELEVATION: 0 m

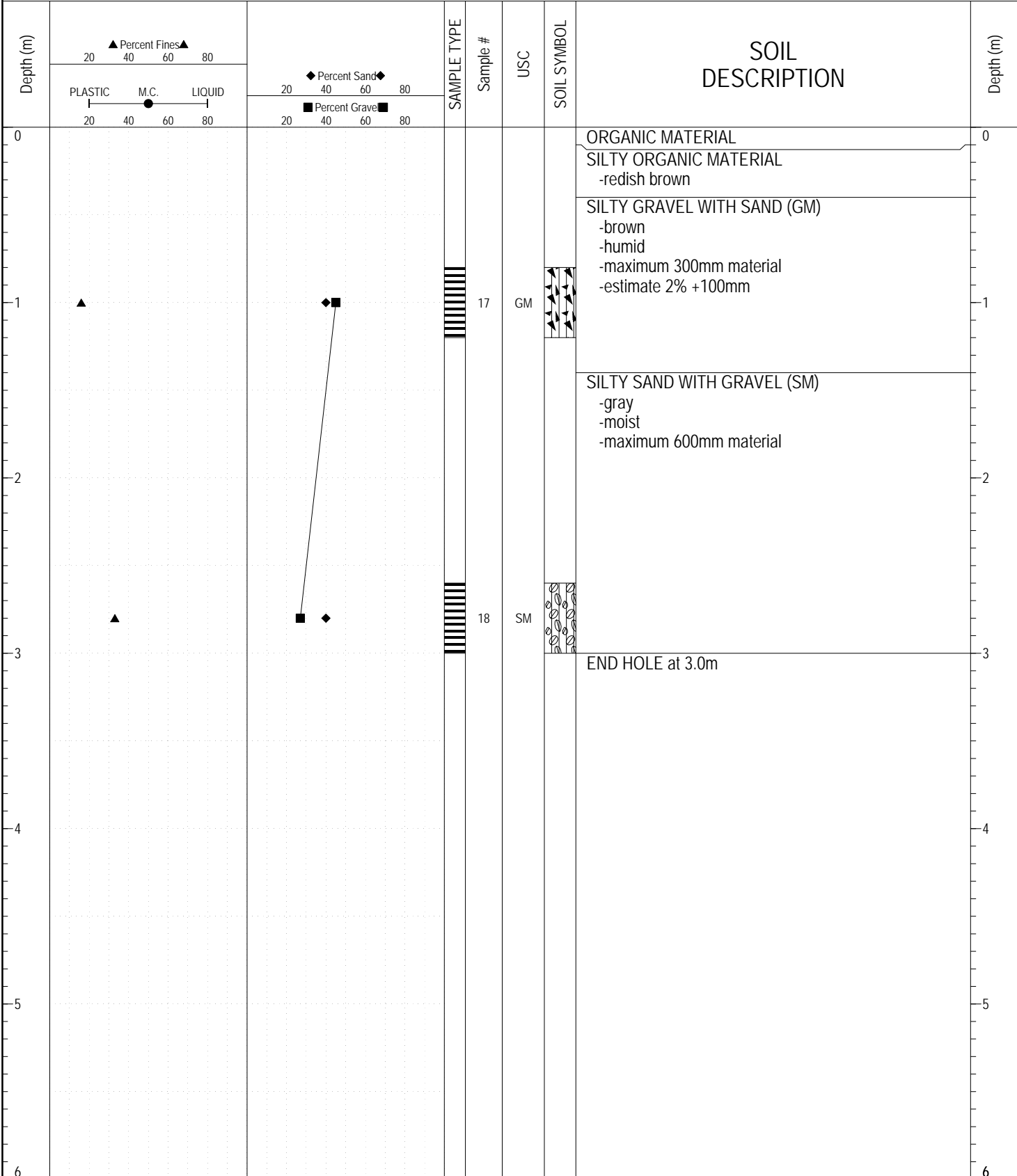
SAMPLE TYPE  RETURN  S.P.T.  Auger  BULK  TUBE  CORE



ESE IMPORT LOG GRAVEL 071-090.GPJ YTG.GDT 9/19/17

SUBSURFACE EXPLORATION AND TEST REPORT	ALASKA HIGHWAY GRANULAR INVESTIGATION	BOREHOLE NO: 090-07
PWC/CAPITAL YUKON	A/H KM 1025 RHS	PROJECT NO: 105-A-07
BACKHOE: KOMATSU PC200	LOCATION: See Plan	ELEVATION: 0 m

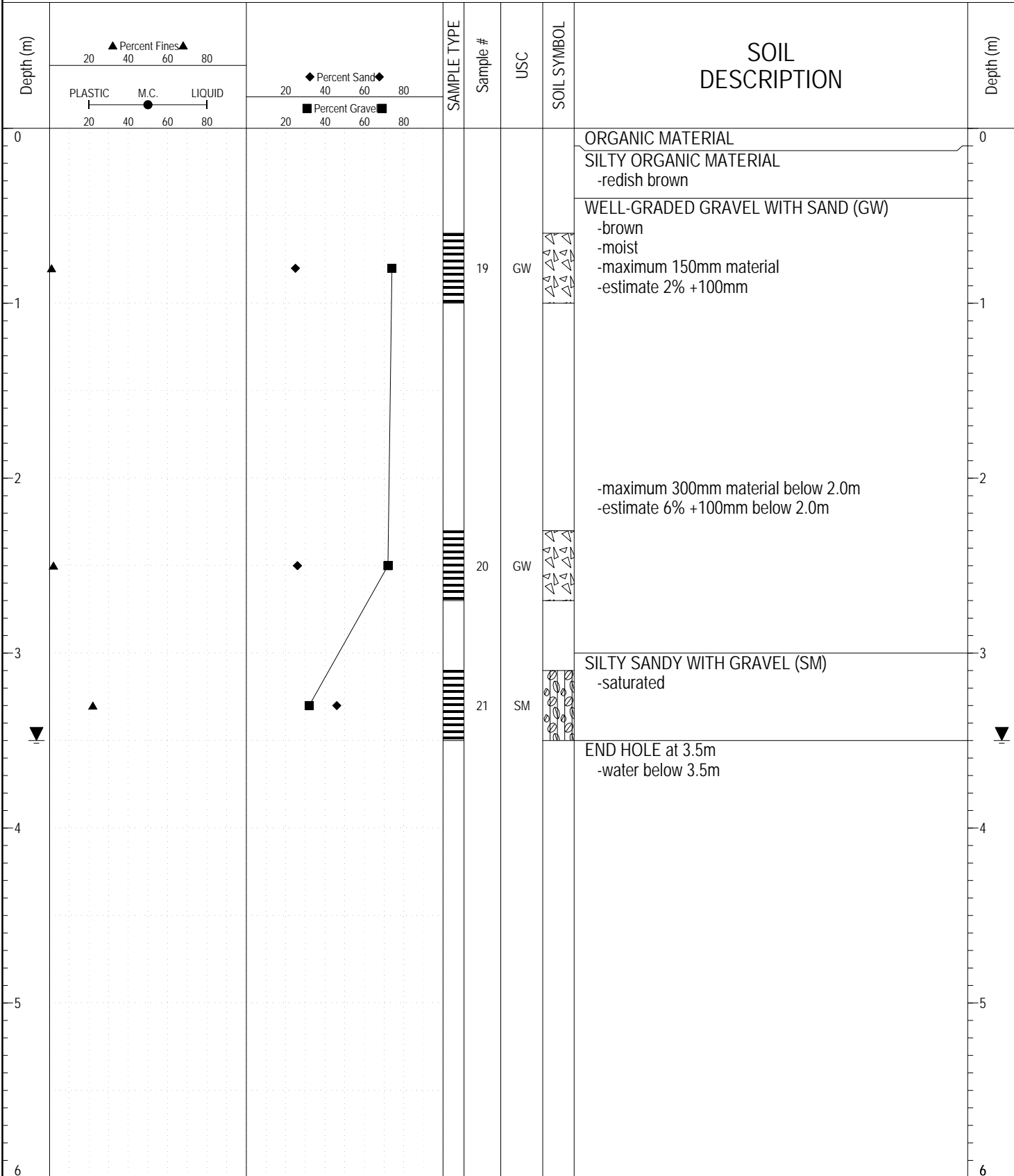
SAMPLE TYPE     RETURN     S.P.T.     Auger     BULK     TUBE     CORE



ESE IMPORT LOG GRAVEL 071-090.GPJ YTG.GDT 9/19/17

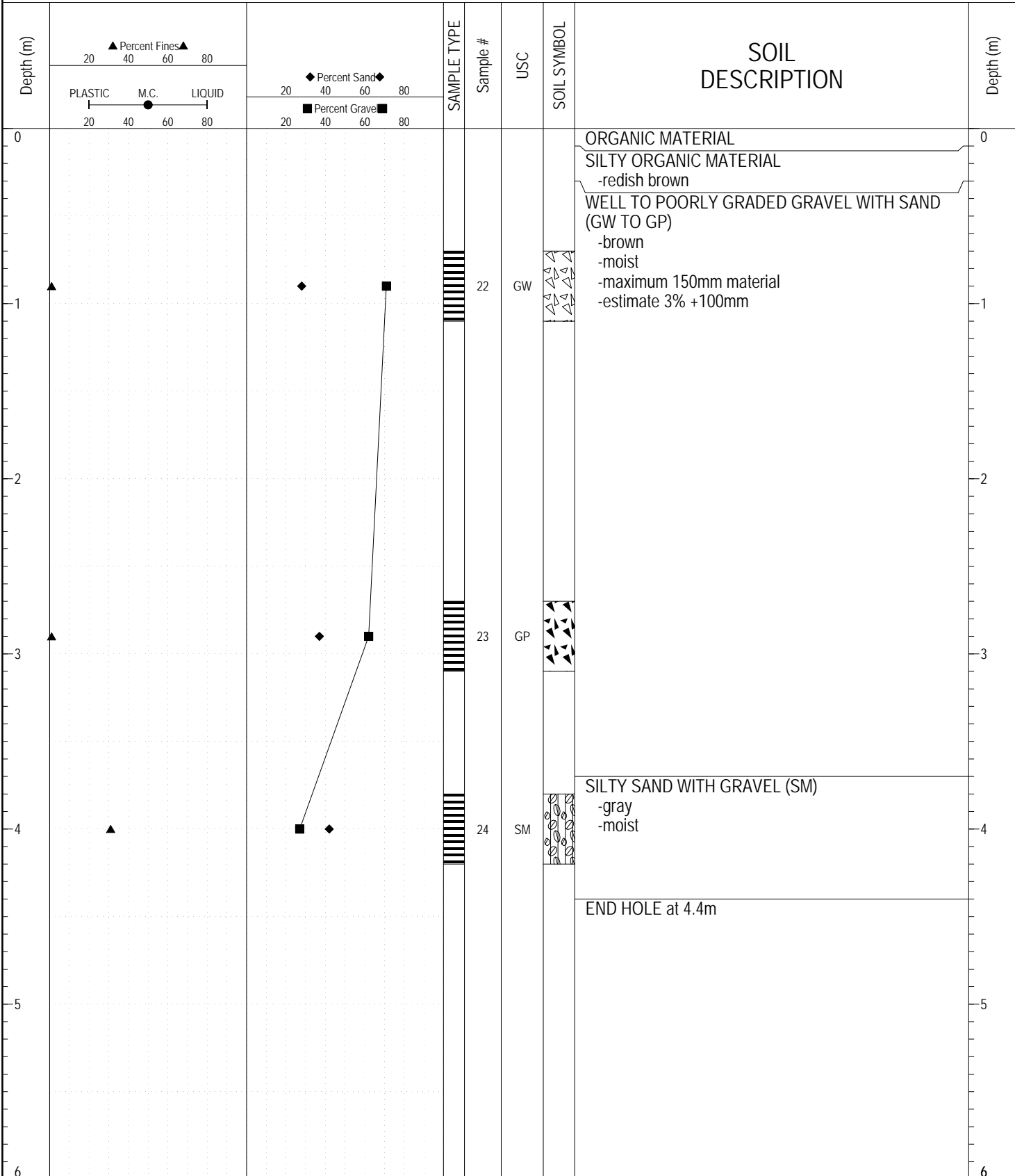
SUBSURFACE EXPLORATION AND TEST REPORT	ALASKA HIGHWAY GRANULAR INVESTIGATION	BOREHOLE NO: 090-08
PWC/CAPITAL YUKON	A/H KM 1025 RHS	PROJECT NO: 105-A-07
BACKHOE: KOMATSU PC200	LOCATION: See Plan	ELEVATION: 0 m

SAMPLE TYPE     RETURN     S.P.T.     Auger     BULK     TUBE     CORE



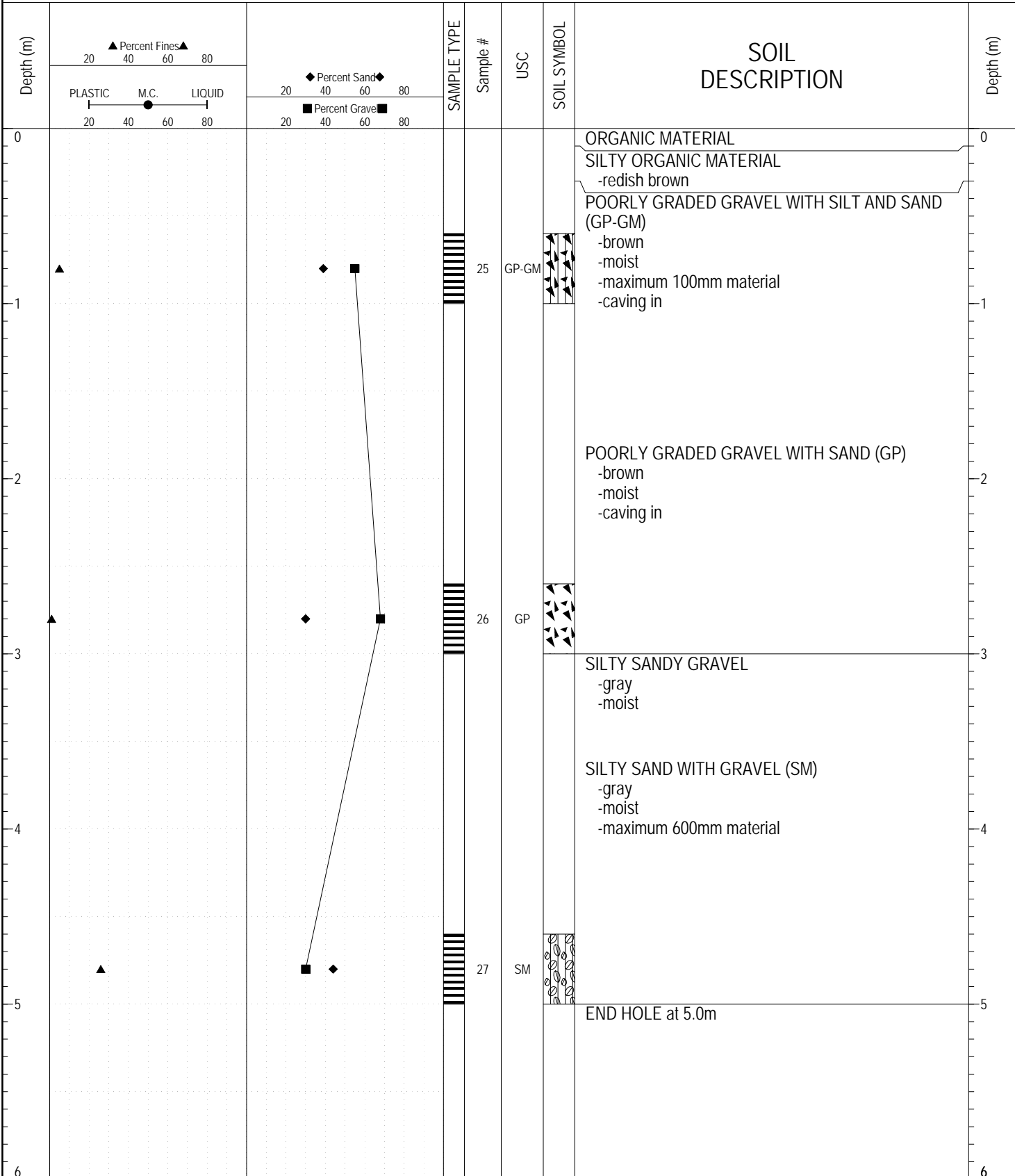
ESE IMPORT LOG GRAVEL 071-090.GPJ YTG.GDT 9/19/17

SAMPLE TYPE     RETURN     S.P.T.     Auger     BULK     TUBE     CORE



ESE IMPORT LOG GRAVEL 071-090.GPJ YTG.GDT 9/19/17

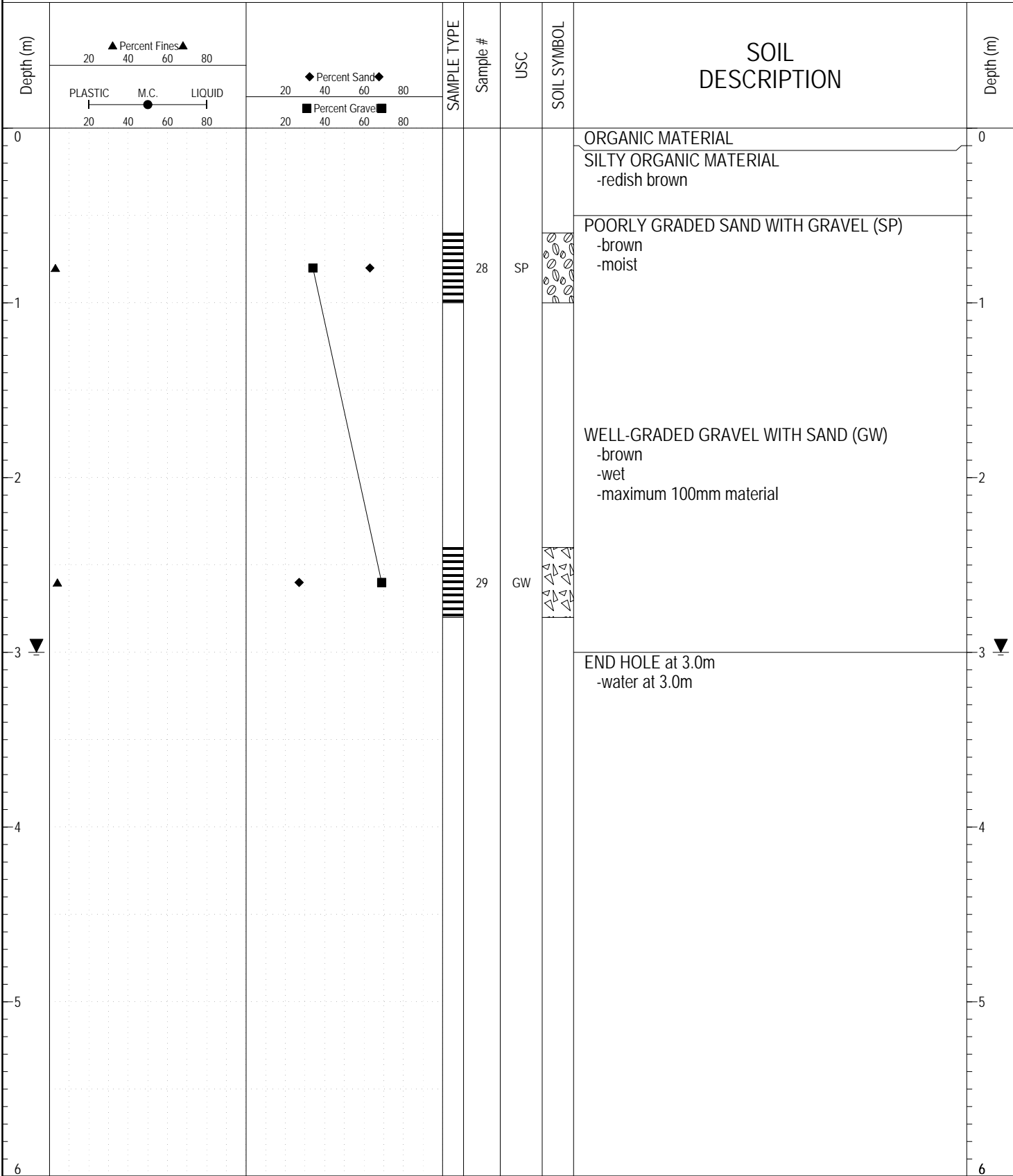
SAMPLE TYPE     RETURN     S.P.T.     Auger     BULK     TUBE     CORE



ESE IMPORT LOG GRAVEL 071-090.GPJ YTG.GDT 9/19/17

SUBSURFACE EXPLORATION AND TEST REPORT	ALASKA HIGHWAY GRANULAR INVESTIGATION	BOREHOLE NO: 090-11
PWC/CAPITAL YUKON	A/H KM 1025 RHS	PROJECT NO: 105-A-07
BACKHOE: KOMATSU PC200	LOCATION: See Plan	ELEVATION: 0 m

SAMPLE TYPE     RETURN     S.P.T.     Auger     BULK     TUBE     CORE



ESE IMPORT LOG GRAVEL 071-090.GPJ YTG.GDT 9/19/17



Highways and Public Works  
Transportation Engineering Branch

LOGGED BY: DT	COMPLETION DEPTH: 3.00 m
REVIEWED BY:	COMPLETION DATE: 7/20/90
	Page 1 of 1

SUBSURFACE EXPLORATION AND TEST REPORT	ALASKA HIGHWAY GRANULAR INVESTIGATION	BOREHOLE NO: 090-12
PWC/CAPITAL YUKON	A/H KM 1025 RHS	PROJECT NO: 105-A-07
BACKHOE: KOMATSU PC200	LOCATION: See Plan	ELEVATION: 0 m

SAMPLE TYPE  RETURN  S.P.T.  Auger  BULK  TUBE  CORE

Depth (m)	▲ Percent Fines ▲		◆ Percent Sand ◆		SAMPLE TYPE	Sample #	USC	SOIL SYMBOL	SOIL DESCRIPTION	Depth (m)
	20	40	60	80						
0	PLASTIC M.C. LIQUID								ORGANIC MATERIAL SILTY ORGANIC MATERIAL -redish brown	0
1									SANDY GRAVELLY SILT -maximum 1000mm material -very hard digging	1
2										2
3									END HOLE at 3.0m	3
4										4
5										5
6										6

ESE IMPORT LOG GRAVEL 071-090.GPJ YTG.GDT 9/19/17

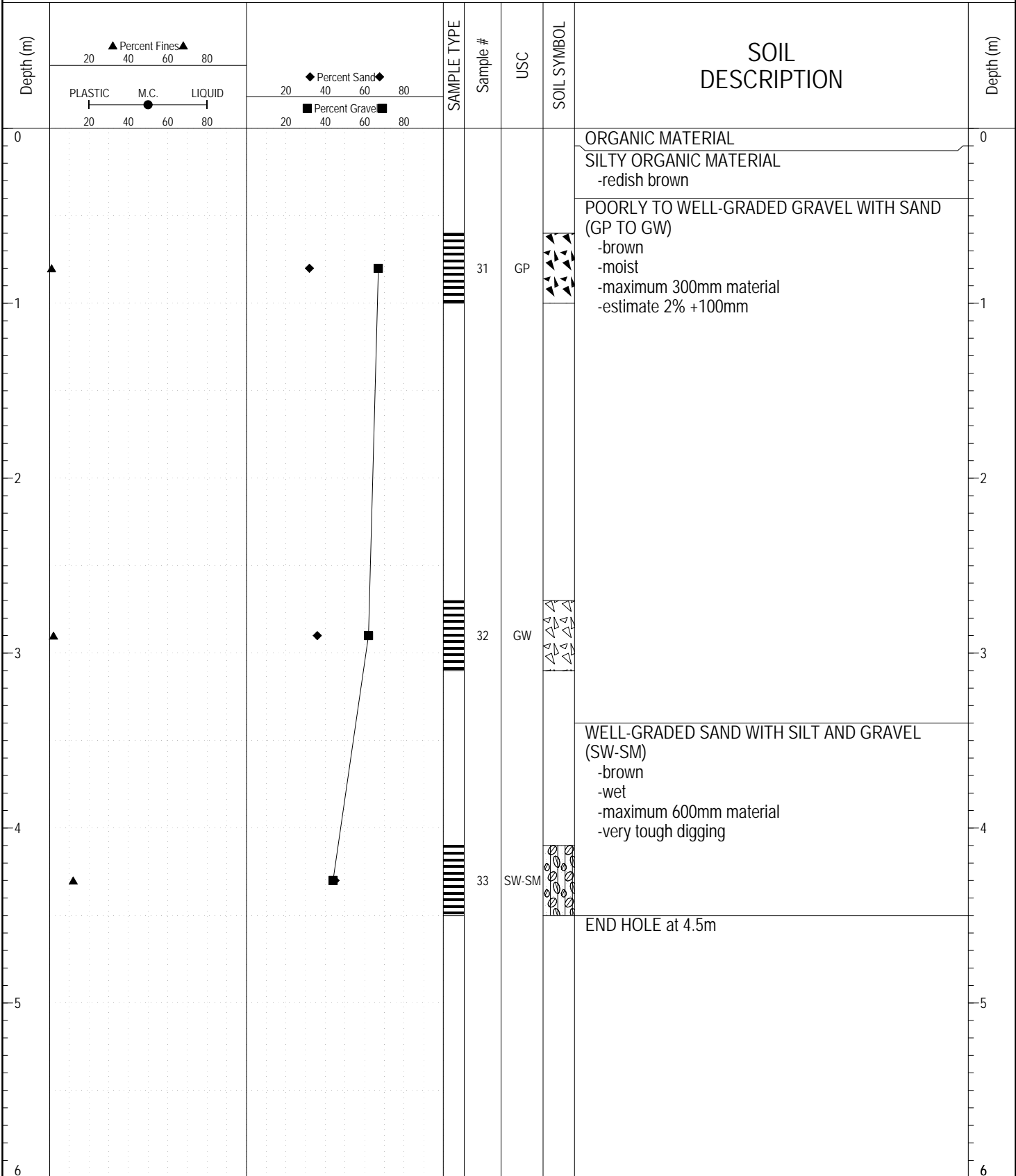


Highways and Public Works  
Transportation Engineering Branch

LOGGED BY: DT	COMPLETION DEPTH: 3.00 m
REVIEWED BY:	COMPLETION DATE: 7/20/90
	Page 1 of 1

SUBSURFACE EXPLORATION AND TEST REPORT		ALASKA HIGHWAY GRANULAR INVESTIGATION	BOREHOLE NO: 090-13
PWC/CAPITAL YUKON		A/H KM 1025 RHS	PROJECT NO: 105-A-07
BACKHOE: KOMATSU PC200		LOCATION: See Plan	ELEVATION: 0 m

SAMPLE TYPE  RETURN  S.P.T.  Auger  BULK  TUBE  CORE



ESE IMPORT LOG GRAVEL 071-090.GPJ YTG.GDT 9/19/17



SUBSURFACE EXPLORATION AND TEST REPORT	ALASKA HIGHWAY GRANULAR INVESTIGATION	BOREHOLE NO: 090-15
PWC/CAPITAL YUKON	A/H KM 1025 RHS	PROJECT NO: 105-A-07
BACKHOE: KOMATSU PC200	LOCATION: See Plan	ELEVATION: 0 m

SAMPLE TYPE  RETURN  S.P.T.  Auger  BULK  TUBE  CORE

Depth (m)	▲ Percent Fines ▲		◆ Percent Sand ◆		SAMPLE TYPE	Sample #	USC	SOIL SYMBOL	SOIL DESCRIPTION	Depth (m)
	20	40	60	80						
0	PLASTIC M.C. LIQUID								ORGANIC MATERIAL SILTY ORGANIC MATERIAL -redish brown	0
1									GRAVELLY SANDY SILT -light brown -damp -maximum 1000mm material -rounded -very hard digging	1
2										2
3									END HOLE at 3.0m	3
4										4
5										5
6										6

ESE IMPORT LOG GRAVEL 071-090.GPJ YTG.GDT 9/19/17

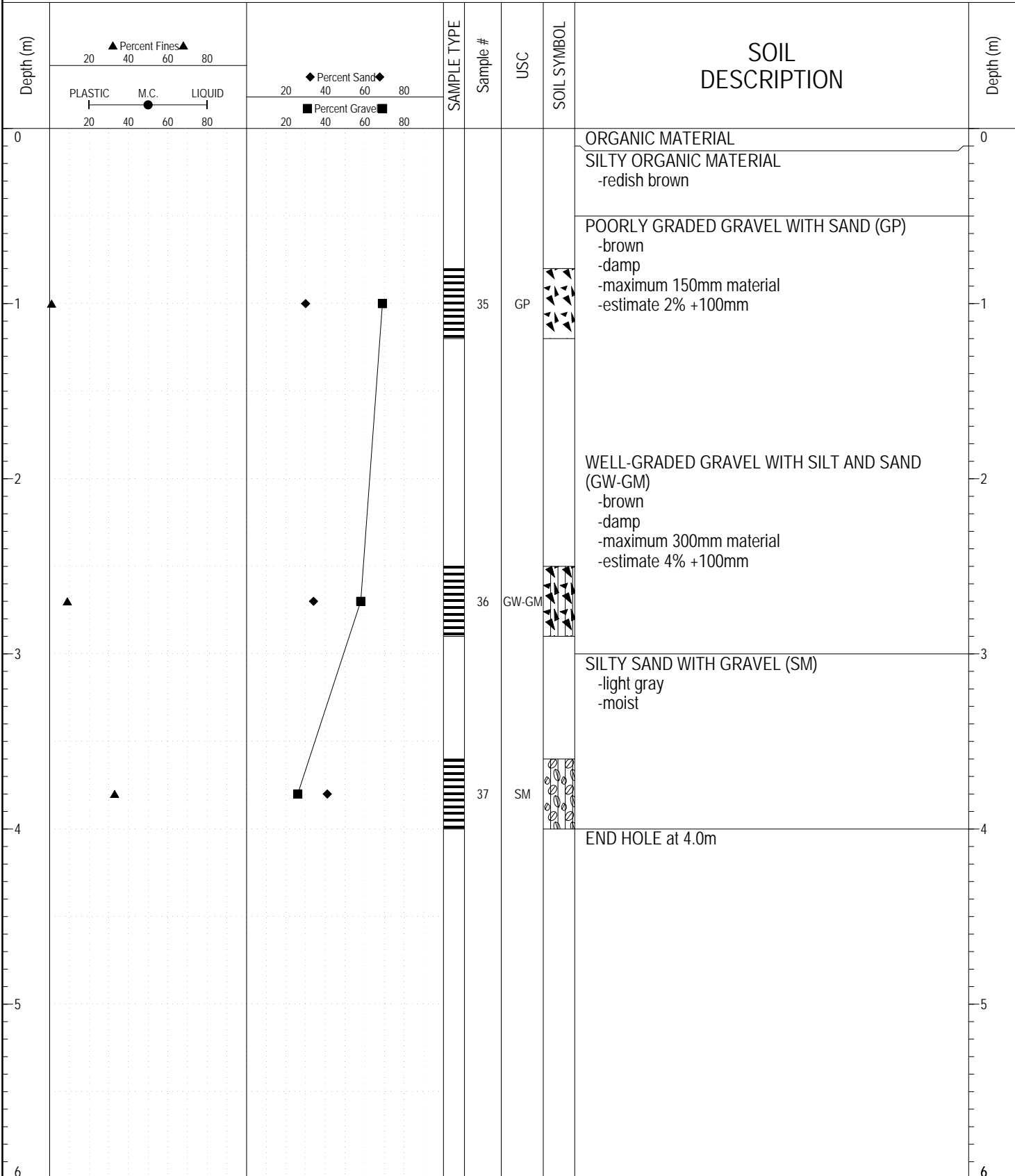


Highways and Public Works  
Transportation Engineering Branch

LOGGED BY: DT	COMPLETION DEPTH: 3.00 m
REVIEWED BY:	COMPLETION DATE: 7/20/90
	Page 1 of 1

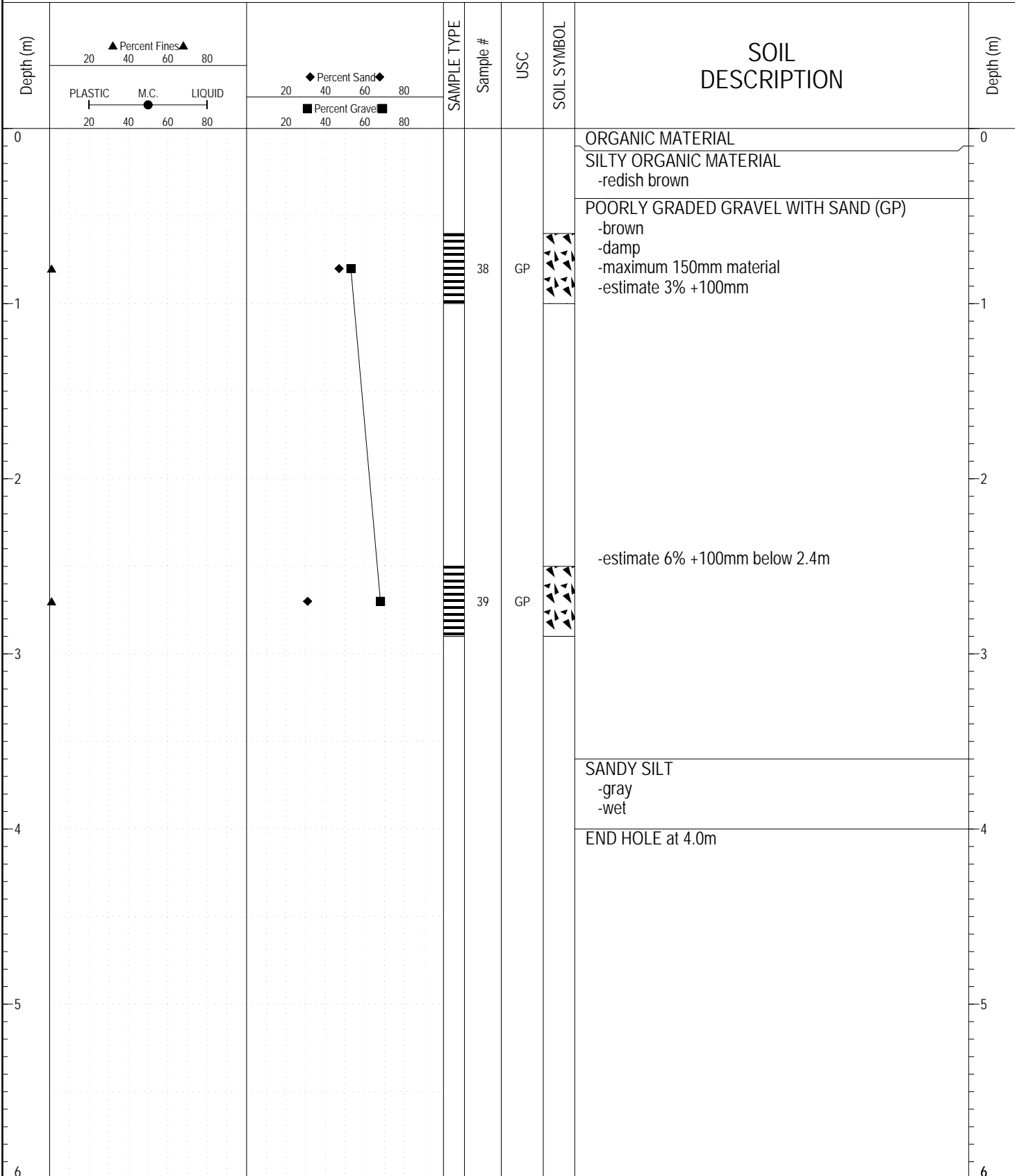
SUBSURFACE EXPLORATION AND TEST REPORT		ALASKA HIGHWAY GRANULAR INVESTIGATION	BOREHOLE NO: 090-16
PWC/CAPITAL YUKON		A/H KM 1025 RHS	PROJECT NO: 105-A-07
BACKHOE: KOMATSU PC200		LOCATION: See Plan	ELEVATION: 0 m

SAMPLE TYPE     RETURN     S.P.T.     Auger     BULK     TUBE     CORE



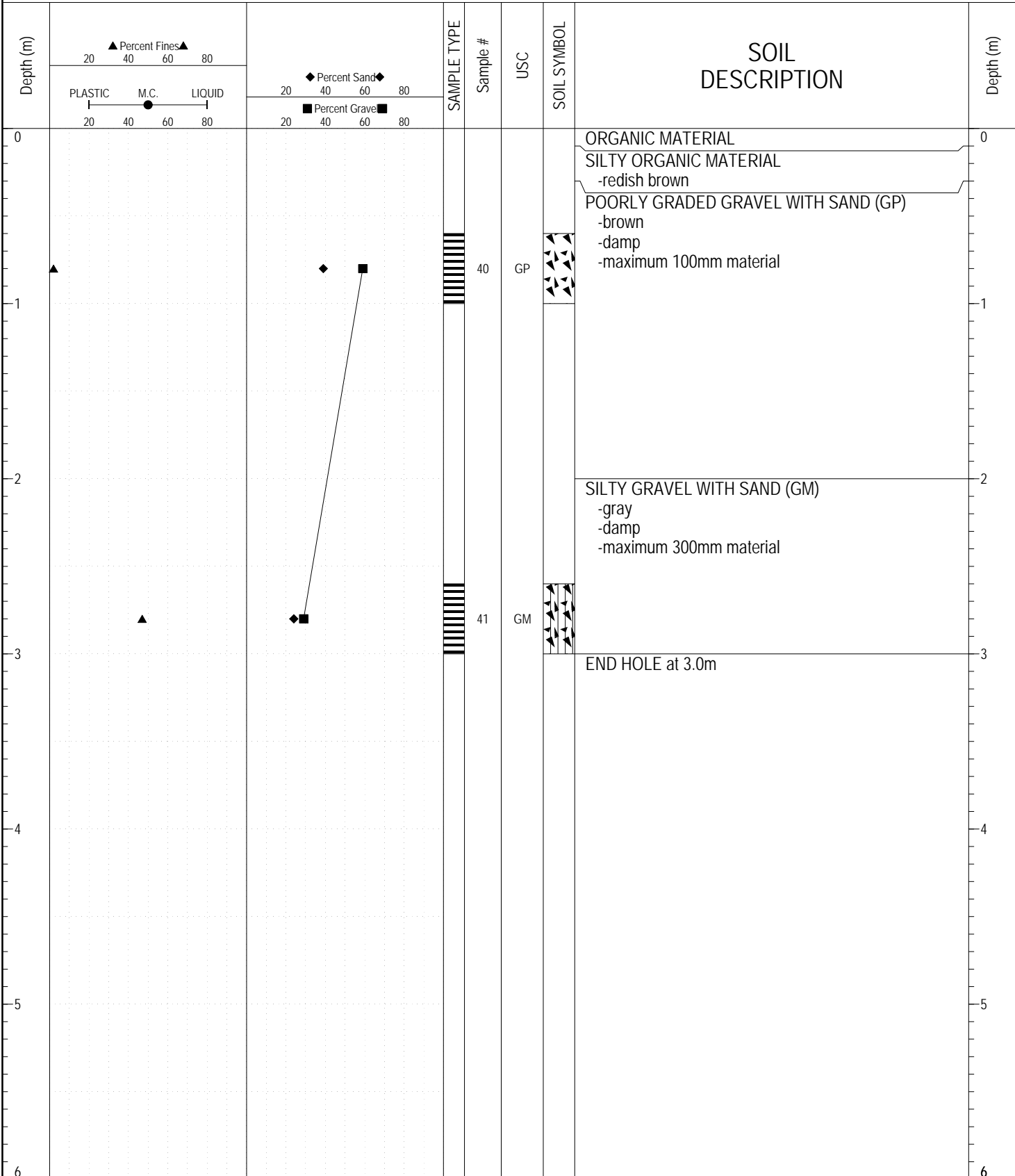
ESE IMPORT LOG GRAVEL 071-090.GPJ YTG.GDT 9/19/17

SAMPLE TYPE     RETURN     S.P.T.     Auger     BULK     TUBE     CORE



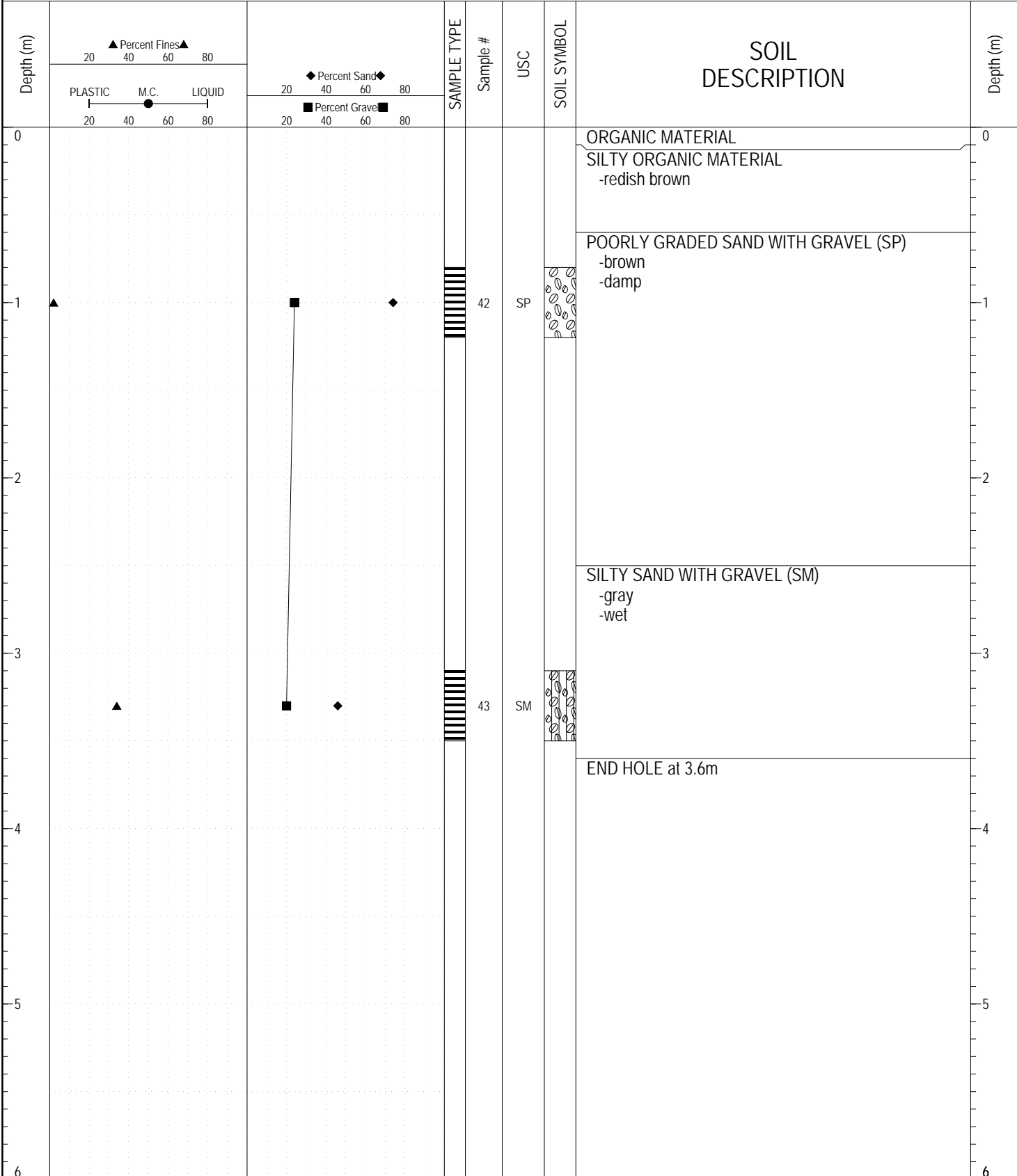
ESE IMPORT LOG GRAVEL 071-090.GPJ YTG.GDT 9/19/17

SAMPLE TYPE     RETURN     S.P.T.     Auger     BULK     TUBE     CORE



ESE IMPORT LOG GRAVEL 071-090.GPJ YTG.GDT 9/19/17

SAMPLE TYPE     RETURN     S.P.T.     Auger     BULK     TUBE     CORE



ESE IMPORT LOG GRAVEL 071-090.GPJ YTG.GDT 9/19/17

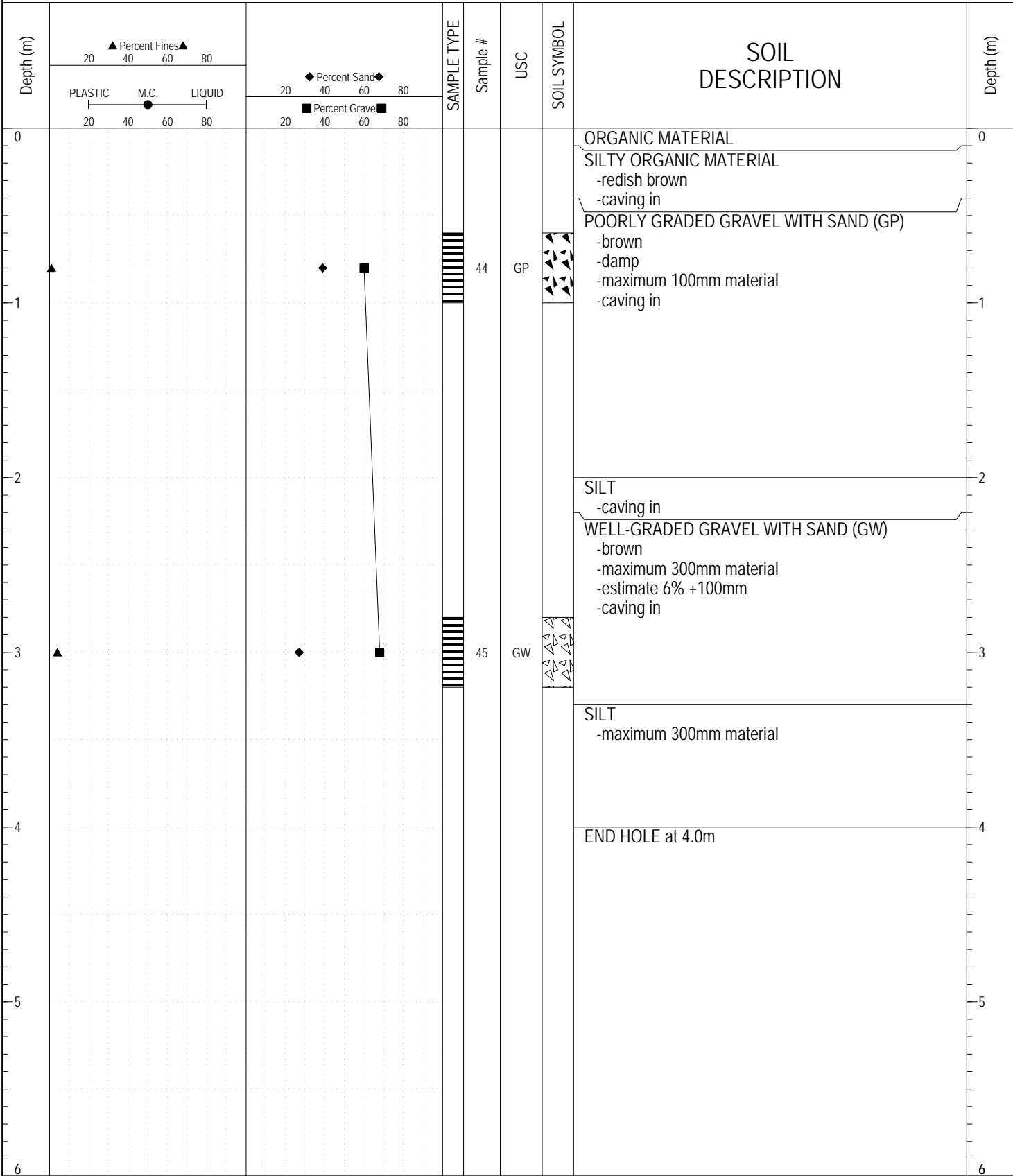


Highways and Public Works  
Transportation Engineering Branch

LOGGED BY: DT	COMPLETION DEPTH: 3.60 m
REVIEWED BY:	COMPLETION DATE: 7/21/90
	Page 1 of 1

SUBSURFACE EXPLORATION AND TEST REPORT	ALASKA HIGHWAY GRANULAR INVESTIGATION	BOREHOLE NO: 090-20
PWC/CAPITAL YUKON	A/H KM 1025 RHS	PROJECT NO: 105-A-07
BACKHOE: KOMATSU PC200	LOCATION: See Plan	ELEVATION: 0 m

SAMPLE TYPE     RETURN     S.P.T.     Auger     BULK     TUBE     CORE



ESE IMPORT LOG GRAVEL 071-090.GPJ YTG.GDT 9/19/17

SUBSURFACE EXPLORATION AND TEST REPORT	ALASKA HIGHWAY GRANULAR INVESTIGATION	BOREHOLE NO: 090-21
PWC/CAPITAL YUKON	A/H KM 1025 RHS	PROJECT NO: 105-A-07
BACKHOE: KOMATSU PC200	LOCATION: See Plan	ELEVATION: 0 m

SAMPLE TYPE  RETURN  S.P.T.  Auger  BULK  TUBE  CORE

Depth (m)	▲ Percent Fines ▲		◆ Percent Sand ◆		SAMPLE TYPE	Sample #	USC	SOIL SYMBOL	SOIL DESCRIPTION	Depth (m)
	20	40	60	80						
0	PLASTIC M.C. LIQUID								ORGANIC MATERIAL SILTY ORGANIC MATERIAL -redish brown	0
1									SILT -gray -damp -trace of sand -maximum 600mm material -hard digging	1
2									END HOLE at 2.4m	2
3										3
4										4
5										5
6										6

ESE IMPORT LOG GRAVEL 071-090.GPJ YTG.GDT 9/19/17



Highways and Public Works  
Transportation Engineering Branch

LOGGED BY: DT	COMPLETION DEPTH: 2.40 m
REVIEWED BY:	COMPLETION DATE: 7/21/90
	Page 1 of 1

SUBSURFACE EXPLORATION AND TEST REPORT	ALASKA HIGHWAY GRANULAR INVESTIGATION	BOREHOLE NO: 090-22
PWC/CAPITAL YUKON	A/H KM 1025 RHS	PROJECT NO: 105-A-07
BACKHOE: KOMATSU PC200	LOCATION: See Plan	ELEVATION: 0 m

SAMPLE TYPE     RETURN     S.P.T.     Auger     BULK     TUBE     CORE

Depth (m)	▲ Percent Fines ▲		◆ Percent Sand ◆		SAMPLE TYPE	Sample #	USC	SOIL SYMBOL	SOIL DESCRIPTION	Depth (m)
	20	40	60	80						
0	PLASTIC    M.C.    LIQUID 20    40    60    80		20    40    60    80 20    40    60    80						ORGANIC MATERIAL SILTY ORGANIC MATERIAL -redish brown GRAVELLY SILT -gray -damp -trace of sand  -very large boulders below 1.3m	0
1										1
2									END HOLE at 2.0m	2
3										3
4										4
5										5
6										6

ESE IMPORT LOG GRAVEL 071-090.GPJ YTG.GDT 9/19/17



Highways and Public Works  
Transportation Engineering Branch

LOGGED BY: DT	COMPLETION DEPTH: 2.00 m
REVIEWED BY:	COMPLETION DATE: 7/21/90
	Page 1 of 1

SUBSURFACE EXPLORATION AND TEST REPORT	ALASKA HIGHWAY GRANULAR INVESTIGATION	BOREHOLE NO: 090-23
PWC/CAPITAL YUKON	A/H KM 1025 RHS	PROJECT NO: 105-A-07
BACKHOE: KOMATSU PC200	LOCATION: See Plan	ELEVATION: 0 m

SAMPLE TYPE  RETURN  S.P.T.  Auger  BULK  TUBE  CORE

Depth (m)	▲ Percent Fines ▲		◆ Percent Sand ◆		SAMPLE TYPE	Sample #	USC	SOIL SYMBOL	SOIL DESCRIPTION	Depth (m)
	20	40	60	80						
0	PLASTIC M.C. LIQUID								ORGANIC MATERIAL SILTY ORGANIC MATERIAL	0
0.5									GRAVELLY SANDY SILT -gray -damp	0.5
1.0									-boulders below 1.0m	1.0
2.0									END HOLE at 2.0m	2.0
3.0										3.0
4.0										4.0
5.0										5.0
6.0										6.0

ESE IMPORT LOG GRAVEL 071-090.GPJ YTG.GDT 9/19/17



Highways and Public Works  
Transportation Engineering Branch

LOGGED BY: DT	COMPLETION DEPTH: 2.00 m
REVIEWED BY:	COMPLETION DATE: 7/21/90
	Page 1 of 1

SUBSURFACE EXPLORATION AND TEST REPORT	ALASKA HIGHWAY GRANULAR INVESTIGATION	BOREHOLE NO: 090-24
PWC/CAPITAL YUKON	A/H KM 1025 RHS	PROJECT NO: 105-A-07
BACKHOE: KOMATSU PC200	LOCATION: See Plan	ELEVATION: 0 m

SAMPLE TYPE  RETURN  S.P.T.  Auger  BULK  TUBE  CORE

Depth (m)	▲ Percent Fines ▲ 20 40 60 80		◆ Percent Sand ◆ 20 40 60 80		SAMPLE TYPE	Sample #	USC	SOIL SYMBOL	SOIL DESCRIPTION	Depth (m)
	PLASTIC M.C. LIQUID 20 40 60 80		■ Percent Gravel ■ 20 40 60 80							
0									ORGANIC MATERIAL SANDY SILT -brown -moist -some material to 600mm	0
1									SANDY GRAVEL -maximum 100mm material	1
2									SILT -gray -moist -trace of sand -maximum 600mm material	2
3									END HOLE at 3.0m	3
4										4
5										5
6										6

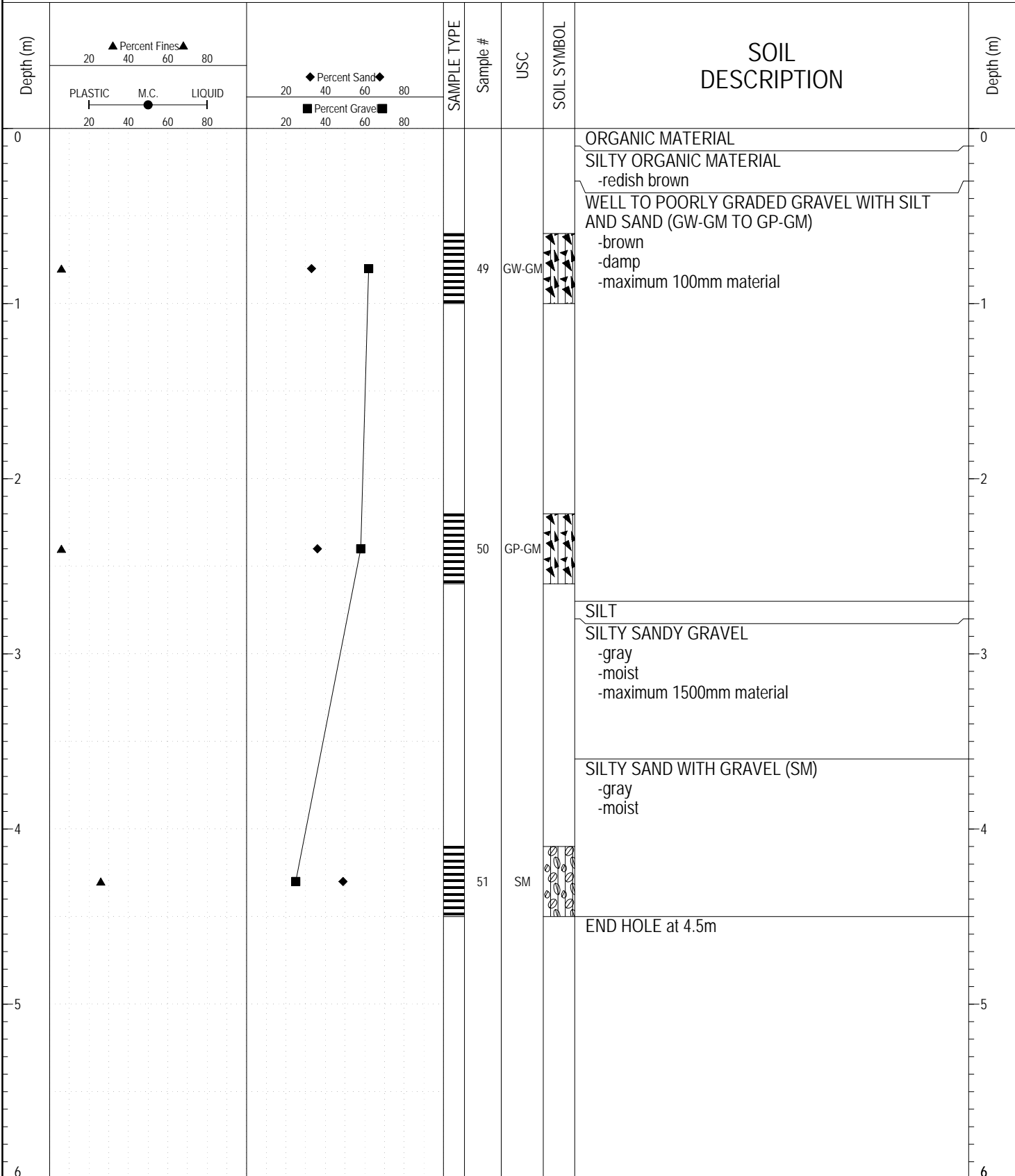
ESE IMPORT LOG GRAVEL 071-090.GPJ YTG.GDT 9/19/17



Highways and Public Works  
Transportation Engineering Branch

LOGGED BY: DT	COMPLETION DEPTH: 3.00 m
REVIEWED BY:	COMPLETION DATE: 7/21/90
	Page 1 of 1

SAMPLE TYPE     RETURN     S.P.T.     Auger     BULK     TUBE     CORE



ESE IMPORT LOG GRAVEL 071-090.GPJ YTG.GDT 9/19/17