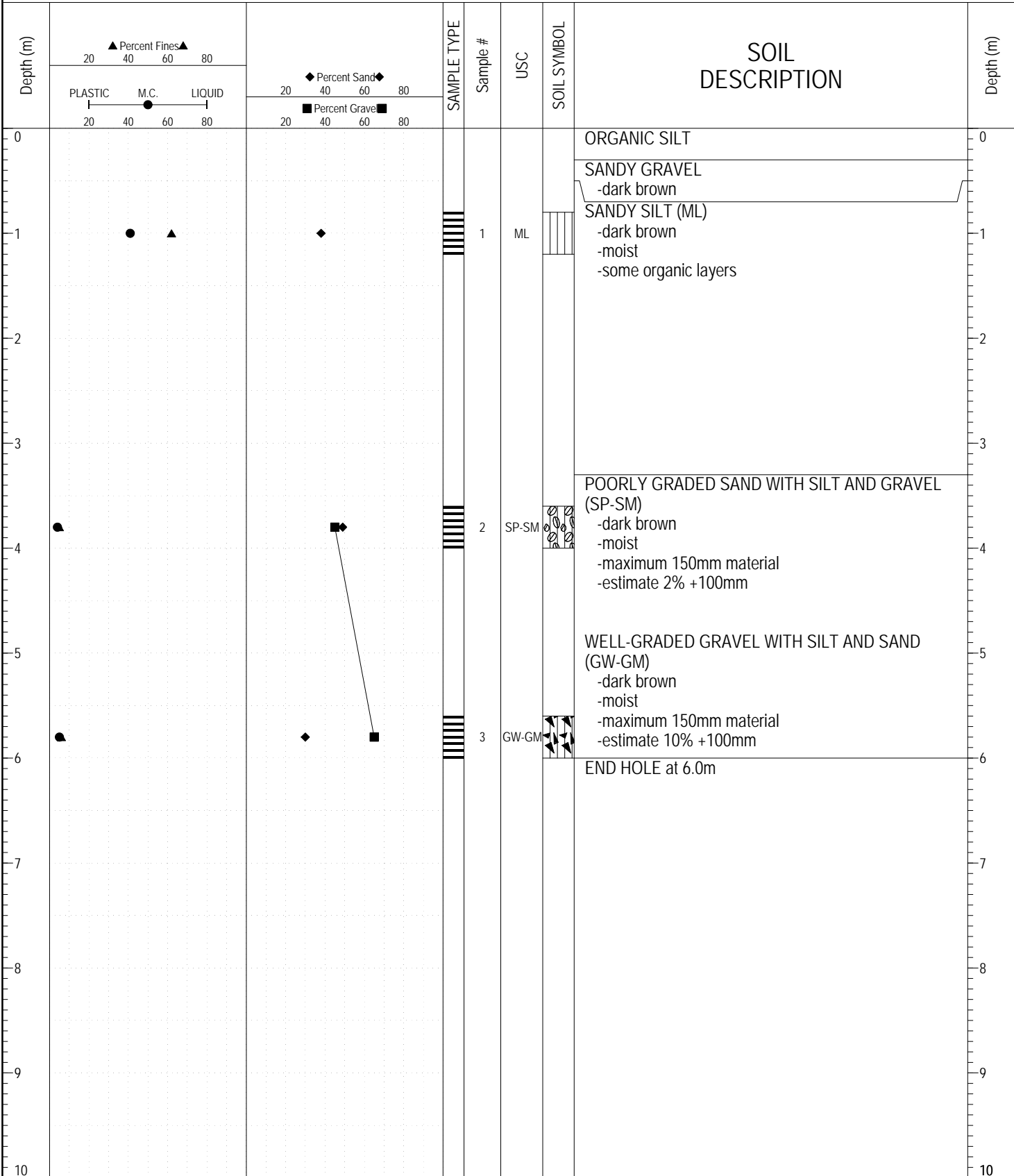


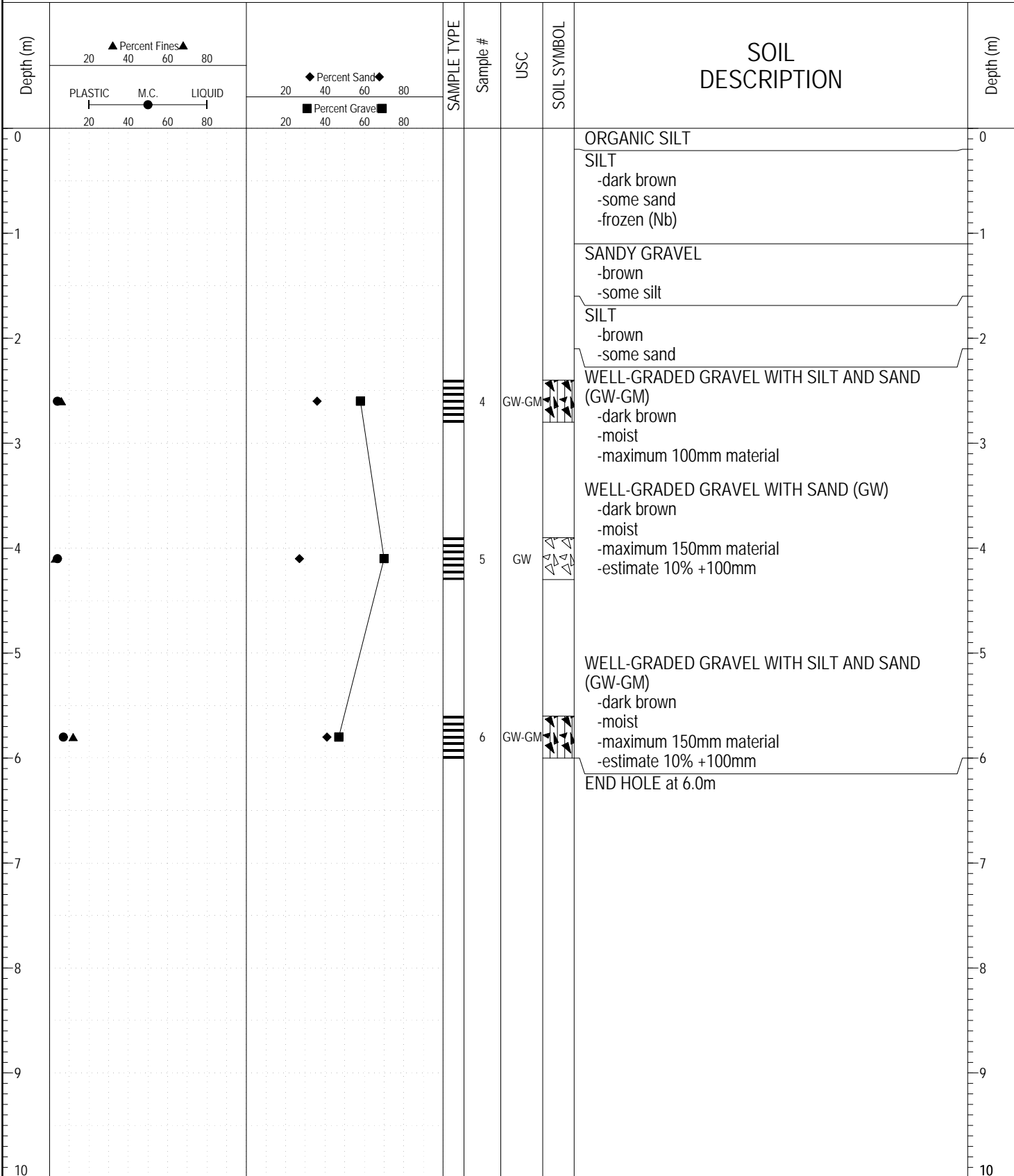
SAMPLE TYPE RETURN S.P.T. Auger BULK TUBE CORE



ESE IMPORT LOG GRAVEL 271-275.GPJ YTG.GDT 6/14/17

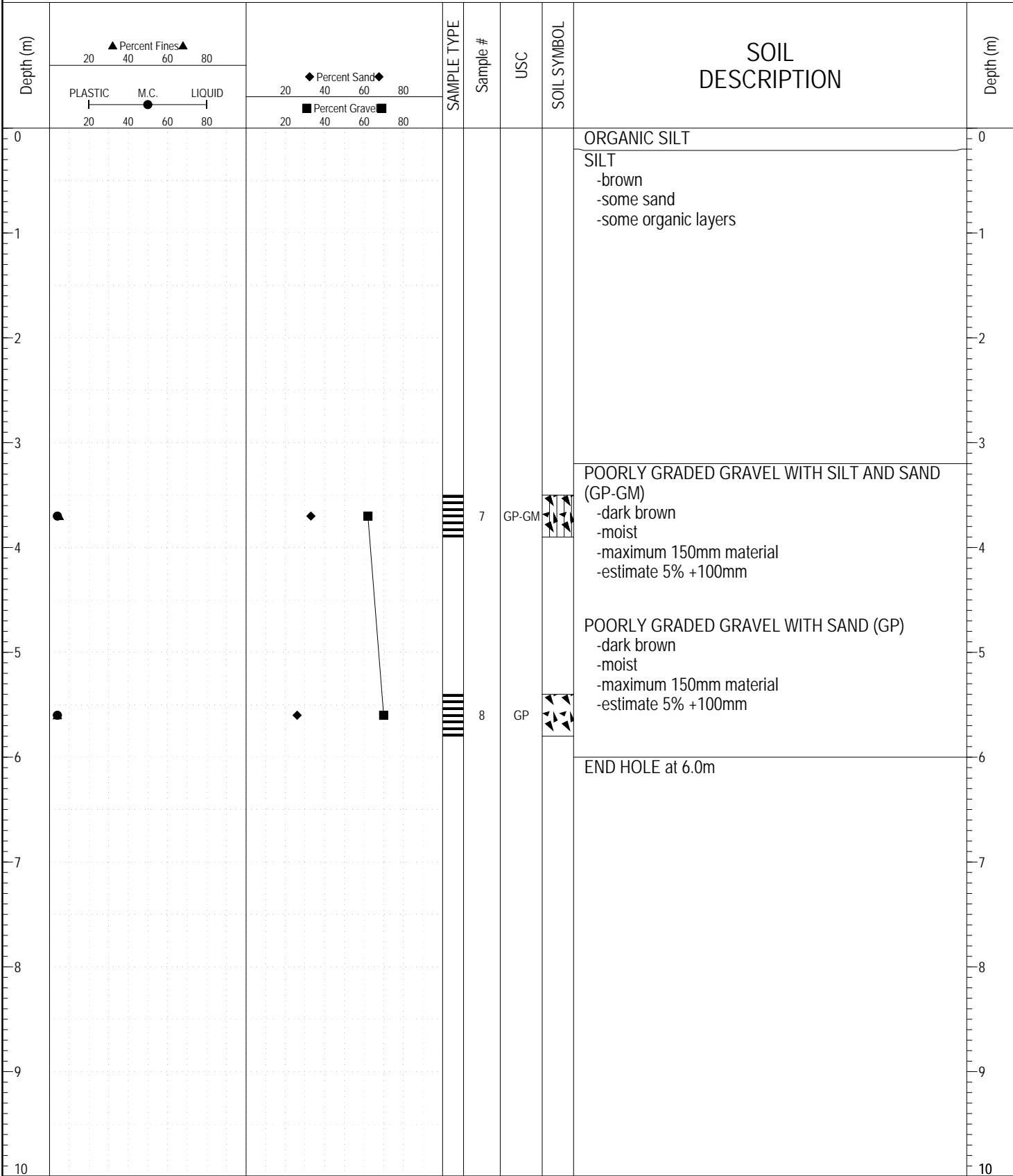
SUBSURFACE EXPLORATION AND TEST REPORT		ALASKA HIGHWAY GRANULAR INVESTIGATION	BOREHOLE NO: 273-17
SHAKWAK PROJECT		SEGMENT 16	PROJECT NO: 092-202101-0312
BACKHOE: CAT 235		LOCATION: See Plan	ELEVATION: 0 m

SAMPLE TYPE RETURN S.P.T. Auger BULK TUBE CORE



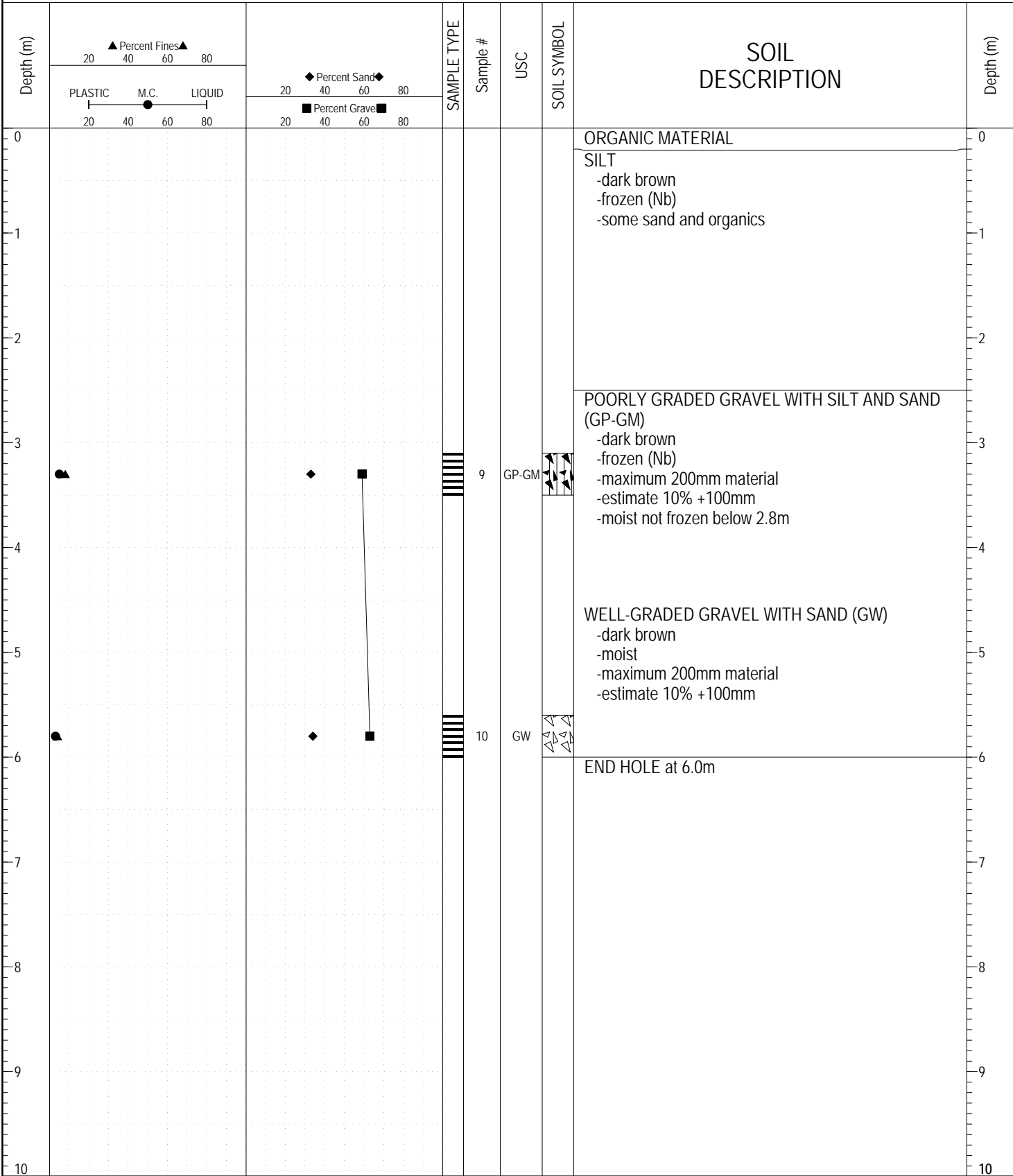
ESE IMPORT LOG GRAVEL 271-275.GPJ YTG.GDT 6/14/17

SAMPLE TYPE RETURN S.P.T. Auger BULK TUBE CORE



ESE IMPORT LOG GRAVEL 271-275.GPJ YTG.GDT 6/14/17

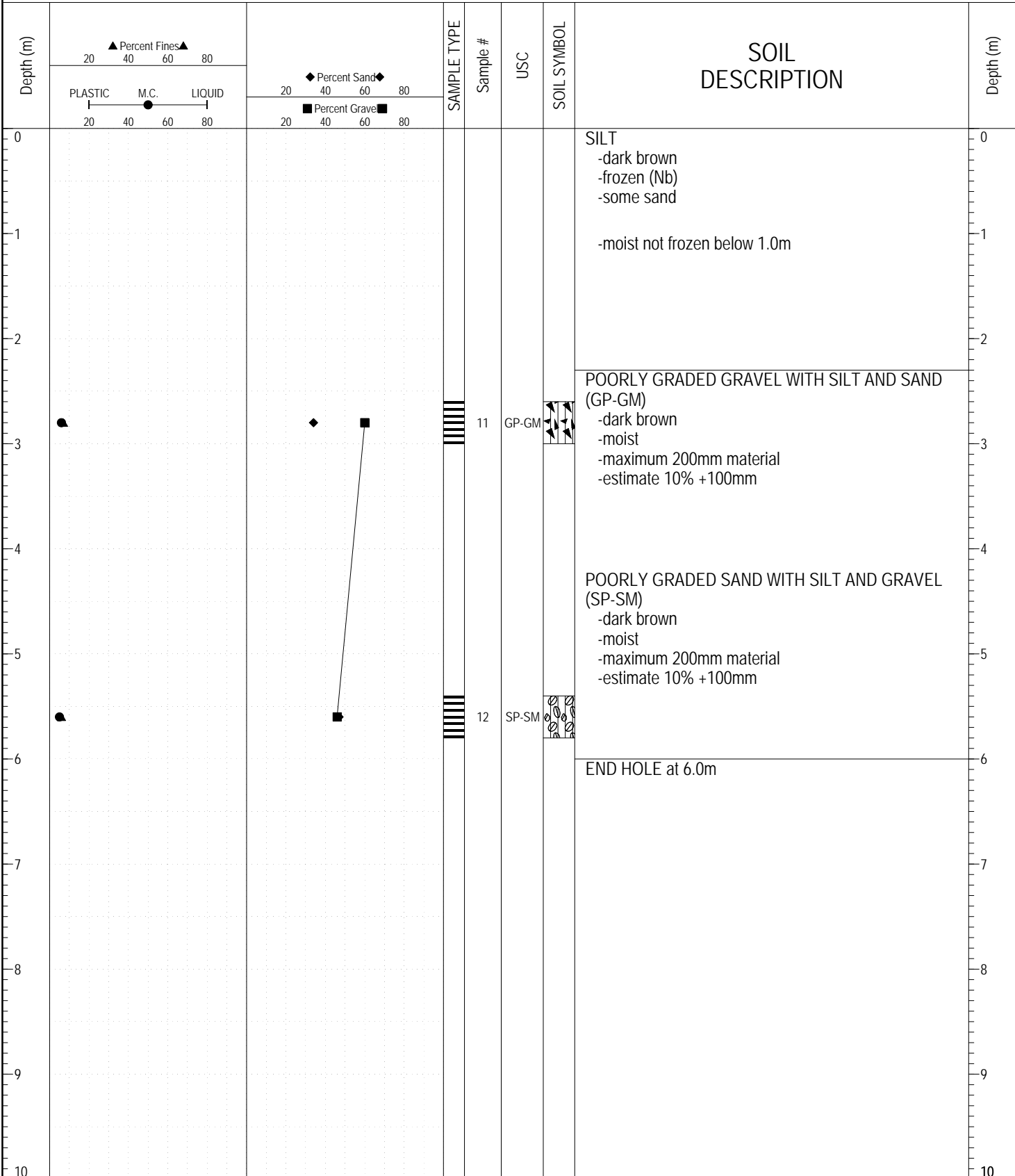
SAMPLE TYPE RETURN S.P.T. Auger BULK TUBE CORE



ESE IMPORT LOG GRAVEL 271-275.GPJ YTG.GDT 6/14/17

SUBSURFACE EXPLORATION AND TEST REPORT	ALASKA HIGHWAY GRANULAR INVESTIGATION	BOREHOLE NO: 273-20
SHAKWAK PROJECT	SEGMENT 16	PROJECT NO: 092-202101-0312
BACKHOE: CAT 235	LOCATION: See Plan	ELEVATION: 0 m

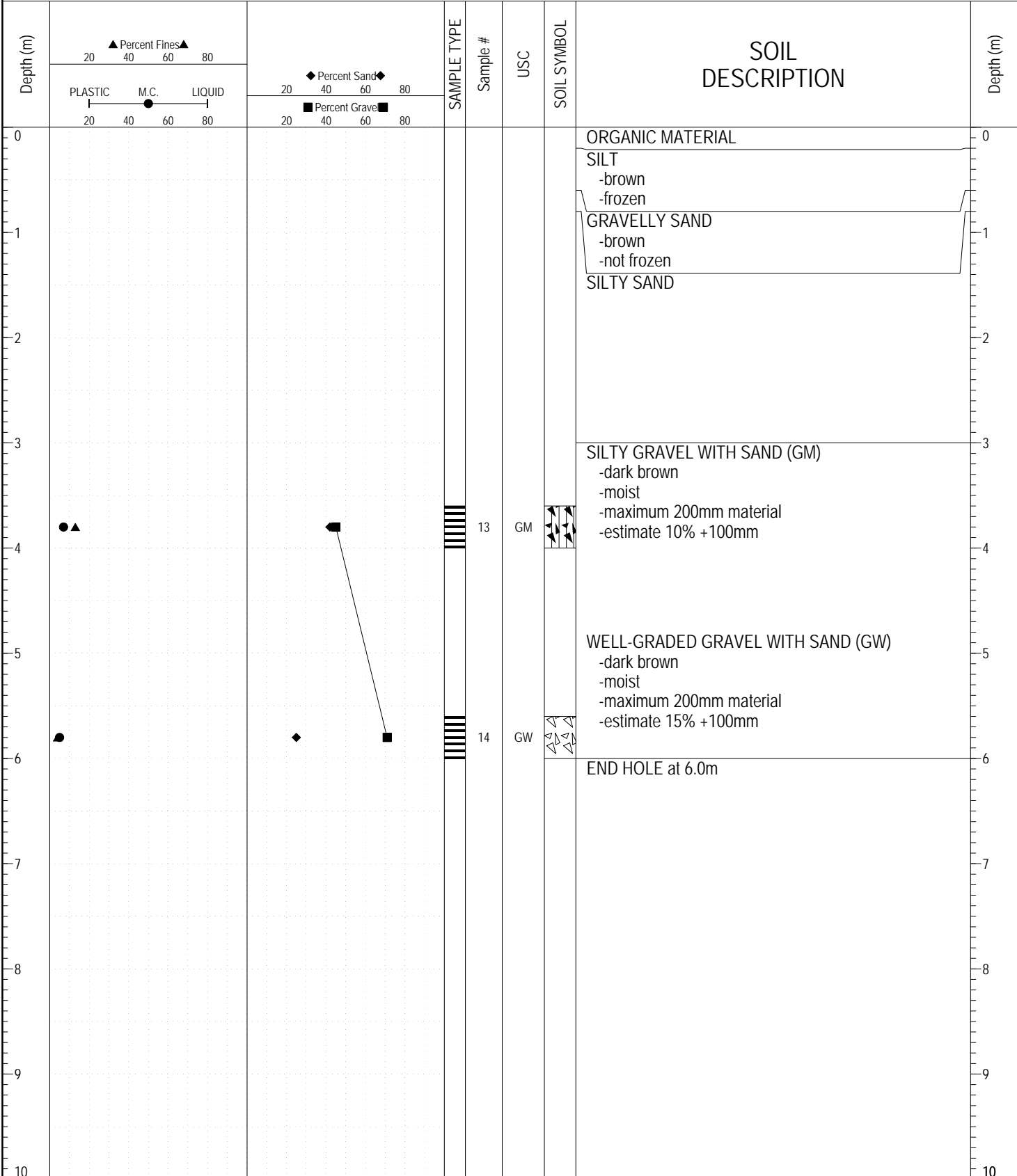
SAMPLE TYPE RETURN S.P.T. Auger BULK TUBE CORE



ESE IMPORT LOG GRAVEL 271-275.GPJ YTG.GDT 6/14/17

SUBSURFACE EXPLORATION AND TEST REPORT	ALASKA HIGHWAY GRANULAR INVESTIGATION	BOREHOLE NO: 273-21
SHAKWAK PROJECT	SEGMENT 16	PROJECT NO: 092-202101-0312
BACKHOE: CAT 235	LOCATION: See Plan	ELEVATION: 0 m

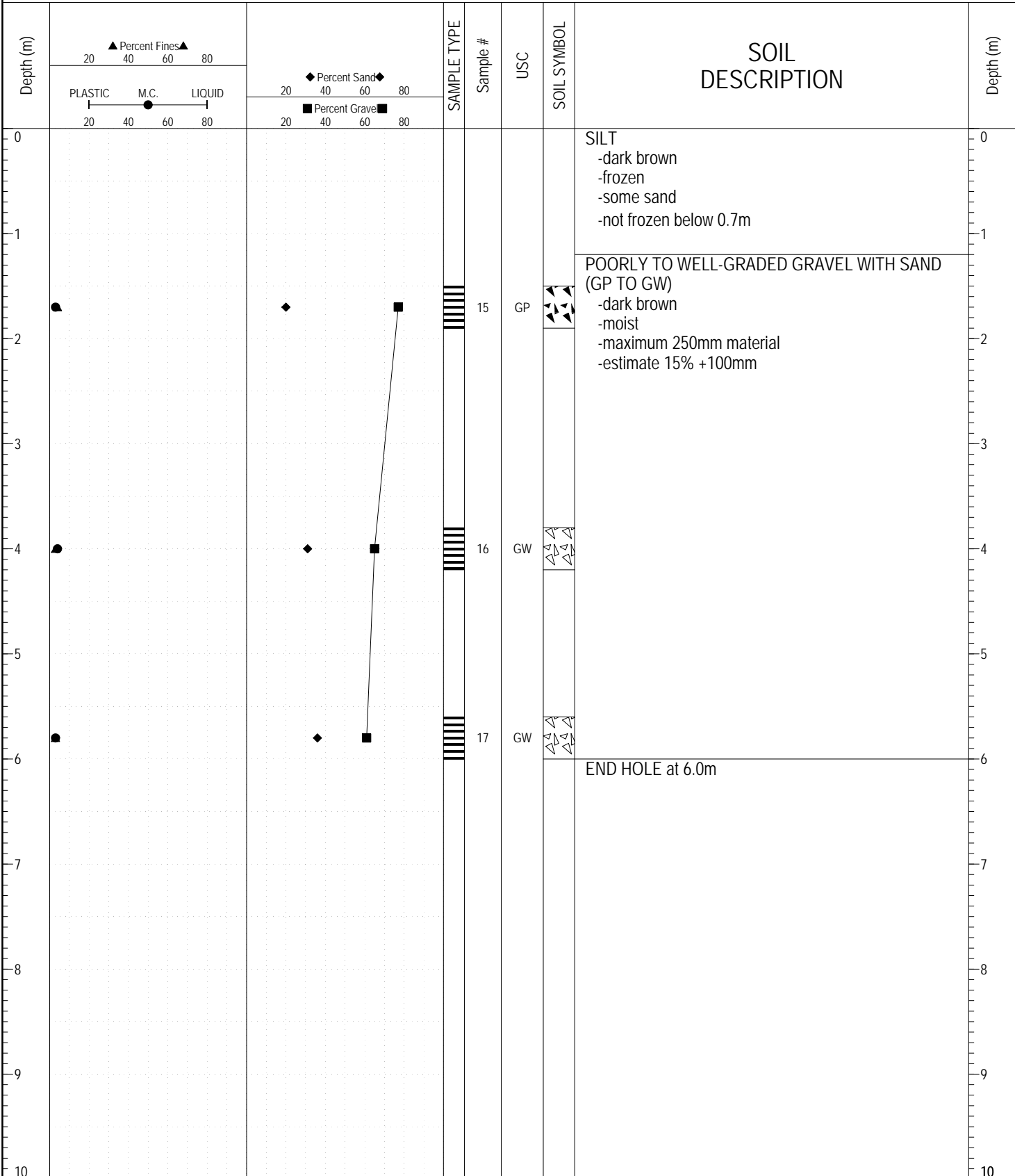
SAMPLE TYPE RETURN S.P.T. Auger BULK TUBE CORE



ESE IMPORT LOG GRAVEL 271-275.GPJ YTG.GDT 6/14/17

SUBSURFACE EXPLORATION AND TEST REPORT		ALASKA HIGHWAY GRANULAR INVESTIGATION	BOREHOLE NO: 273-22
SHAKWAK PROJECT		SEGMENT 16	PROJECT NO: 092-202101-0312
BACKHOE: CAT 235		LOCATION: See Plan	ELEVATION: 0 m

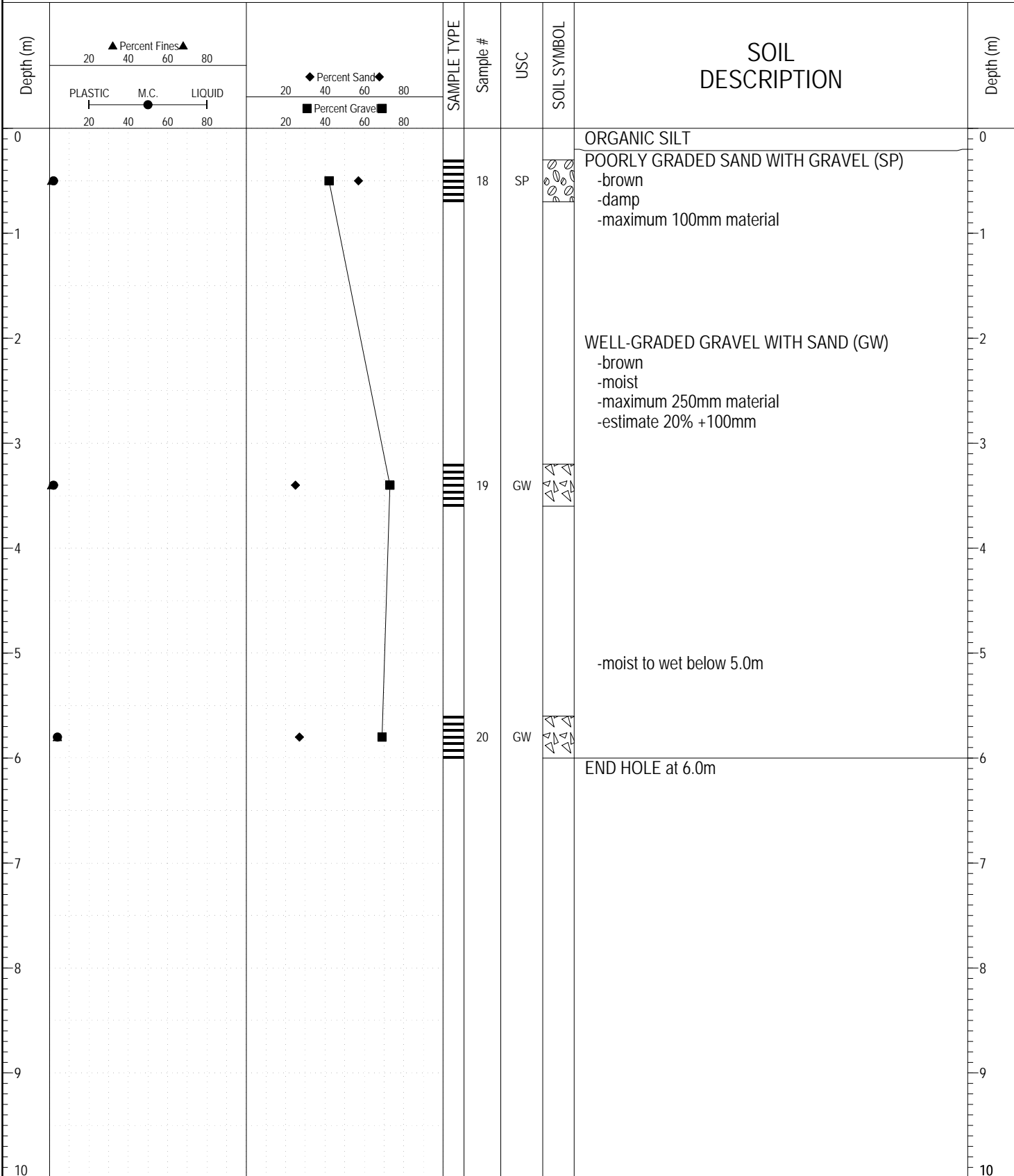
SAMPLE TYPE RETURN S.P.T. Auger BULK TUBE CORE



ESE IMPORT LOG GRAVEL 271-275.GPJ YTG.GDT 6/14/17

SUBSURFACE EXPLORATION AND TEST REPORT	ALASKA HIGHWAY GRANULAR INVESTIGATION	BOREHOLE NO: 273-23
SHAKWAK PROJECT	SEGMENT 16	PROJECT NO: 092-202101-0312
BACKHOE: CAT 235	LOCATION: See Plan	ELEVATION: 0 m

SAMPLE TYPE RETURN S.P.T. Auger BULK TUBE CORE



ESE IMPORT LOG GRAVEL 271-275.GPJ YTG.GDT 6/14/17

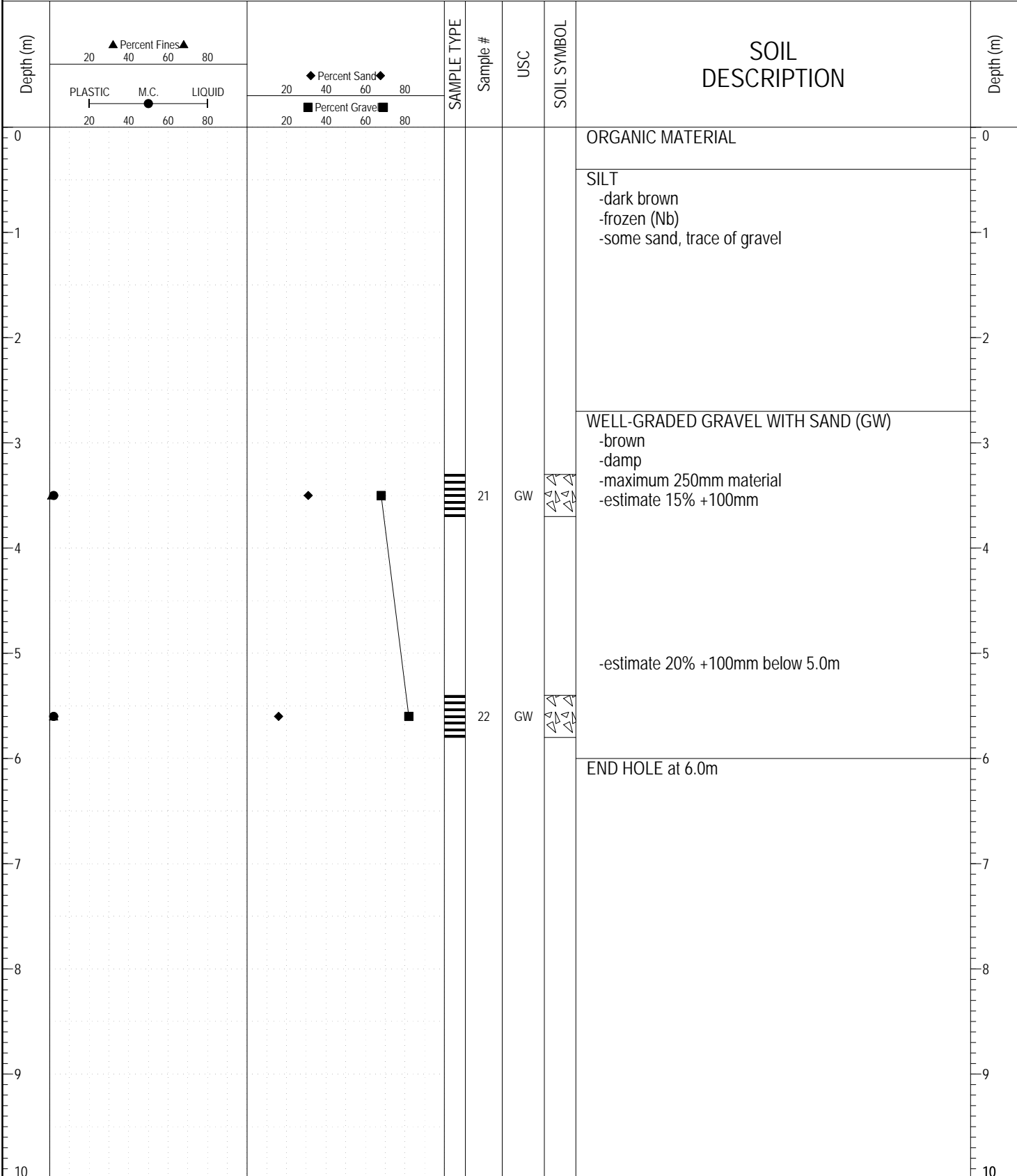


Highways and Public Works
Transportation Engineering Branch

LOGGED BY: DT	COMPLETION DEPTH: 6.00 m
REVIEWED BY:	COMPLETION DATE: 11/10/93
	Page 1 of 1

SUBSURFACE EXPLORATION AND TEST REPORT	ALASKA HIGHWAY GRANULAR INVESTIGATION	BOREHOLE NO: 273-24
SHAKWAK PROJECT	SEGMENT 16	PROJECT NO: 092-202101-0312
BACKHOE: CAT 235	LOCATION: See Plan	ELEVATION: 0 m

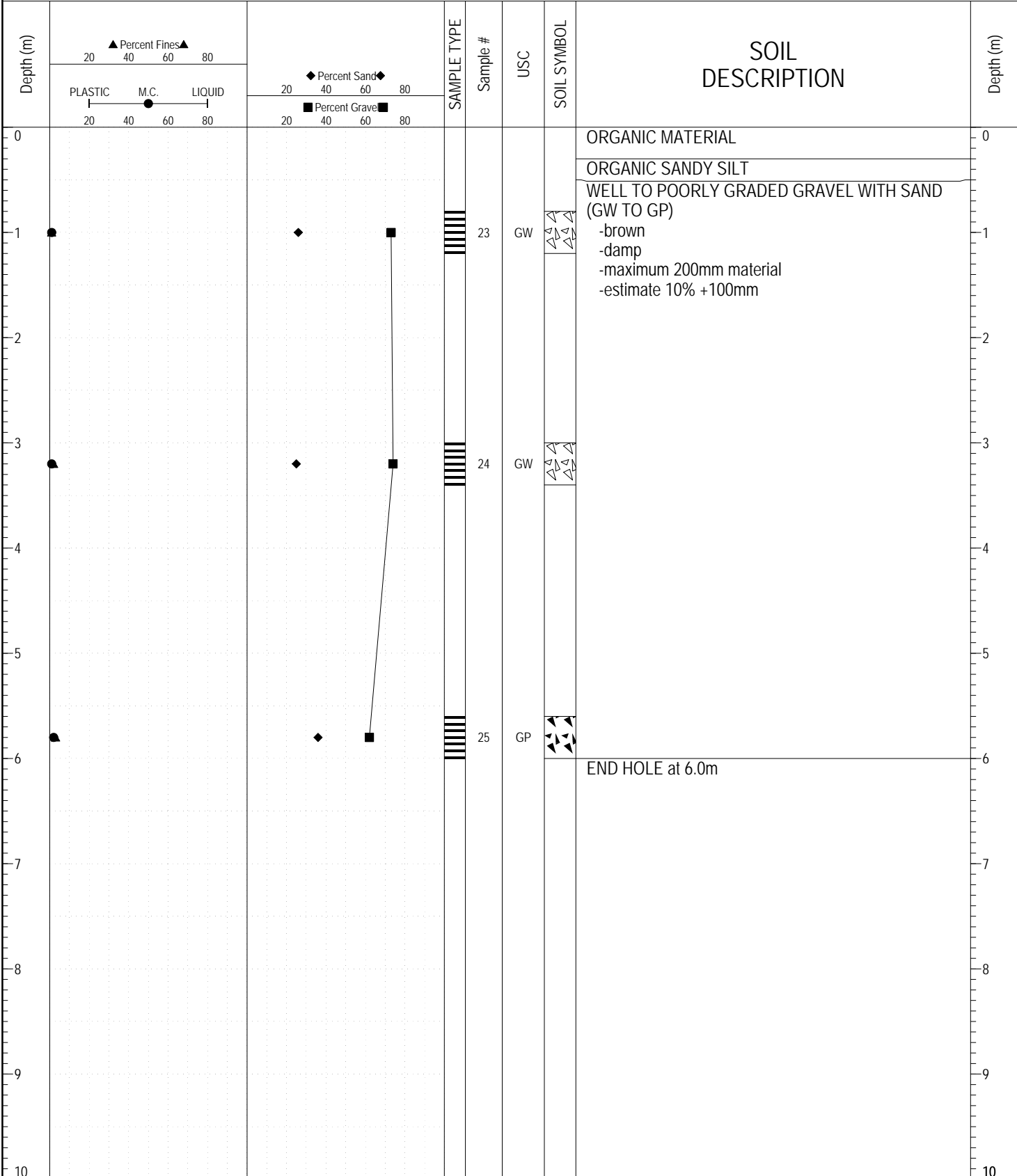
SAMPLE TYPE RETURN S.P.T. Auger BULK TUBE CORE



ESE IMPORT LOG GRAVEL 271-275.GPJ YTG.GDT 6/14/17

SUBSURFACE EXPLORATION AND TEST REPORT	ALASKA HIGHWAY GRANULAR INVESTIGATION	BOREHOLE NO: 273-25
SHAKWAK PROJECT	SEGMENT 16	PROJECT NO: 092-202101-0312
BACKHOE: CAT 235	LOCATION: See Plan	ELEVATION: 0 m

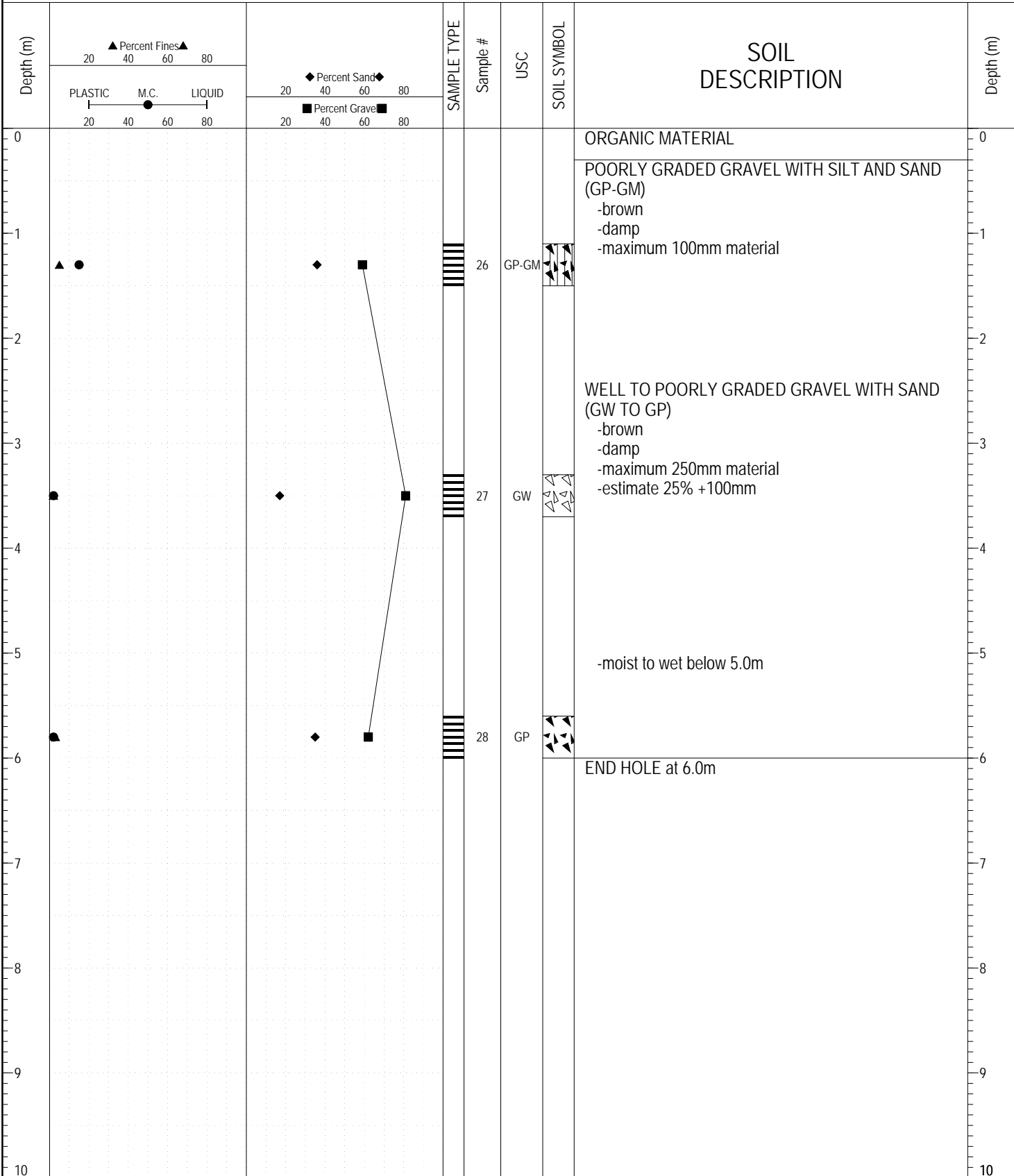
SAMPLE TYPE RETURN S.P.T. Auger BULK TUBE CORE



ESE IMPORT LOG GRAVEL 271-275.GPJ YTG.GDT 6/14/17

SUBSURFACE EXPLORATION AND TEST REPORT	ALASKA HIGHWAY GRANULAR INVESTIGATION	BOREHOLE NO: 273-26
SHAKWAK PROJECT	SEGMENT 16	PROJECT NO: 092-202101-0312
BACKHOE: CAT 235	LOCATION: See Plan	ELEVATION: 0 m

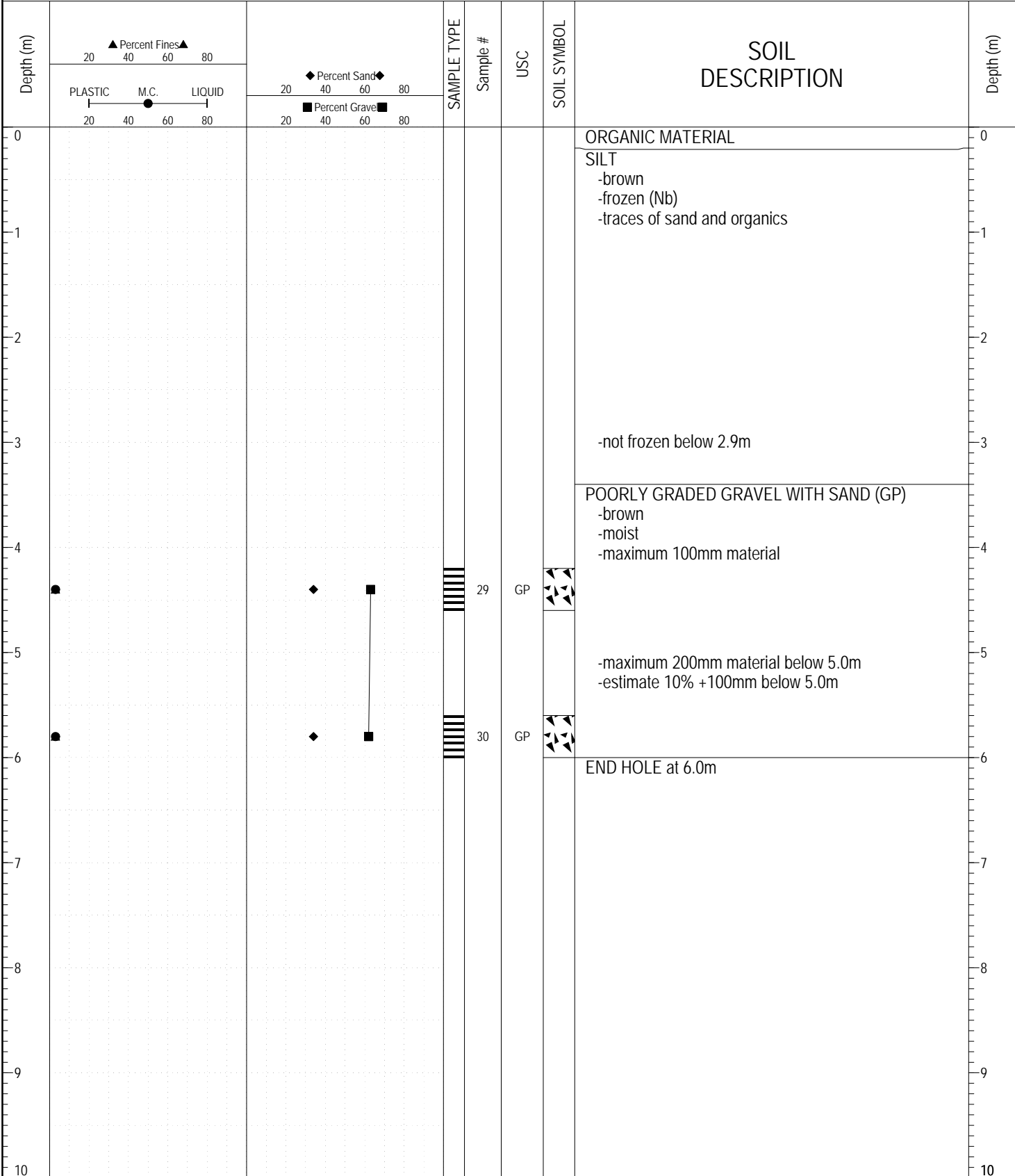
SAMPLE TYPE RETURN S.P.T. Auger BULK TUBE CORE



ESE IMPORT LOG GRAVEL 271-275.GPJ YTG.GDT 6/14/17

SUBSURFACE EXPLORATION AND TEST REPORT	ALASKA HIGHWAY GRANULAR INVESTIGATION	BOREHOLE NO: 273-27
SHAKWAK PROJECT	SEGMENT 16	PROJECT NO: 092-202101-0312
BACKHOE: CAT 235	LOCATION: See Plan	ELEVATION: 0 m

SAMPLE TYPE RETURN S.P.T. Auger BULK TUBE CORE



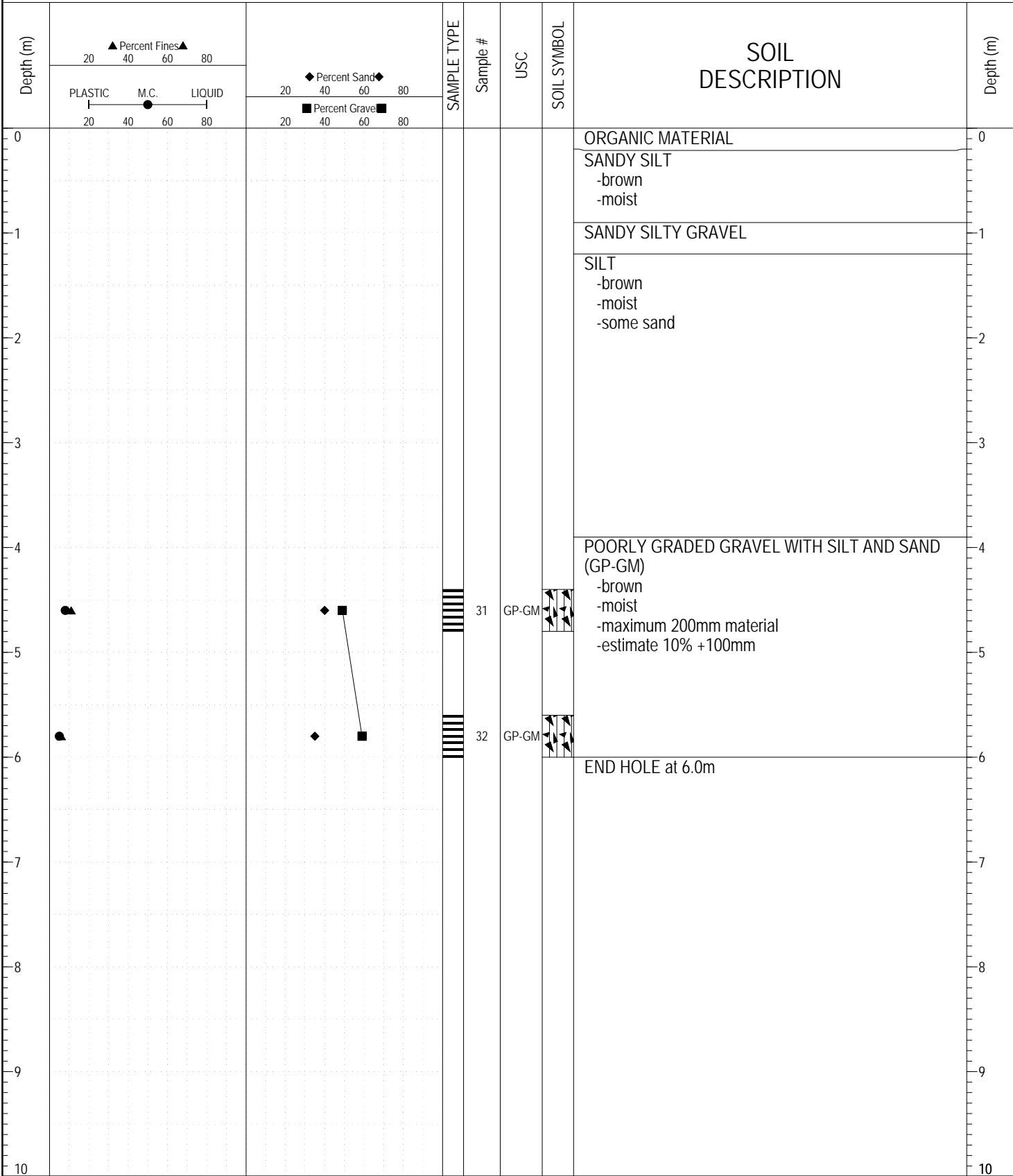
ESE IMPORT LOG GRAVEL 271-275.GPJ YTG.GDT 6/14/17



Highways and Public Works
Transportation Engineering Branch

LOGGED BY: DT	COMPLETION DEPTH: 6.00 m
REVIEWED BY:	COMPLETION DATE: 11/11/93
	Page 1 of 1

SAMPLE TYPE RETURN S.P.T. Auger BULK TUBE CORE



ESE IMPORT LOG GRAVEL 271-275.GPJ YTG.GDT 6/14/17