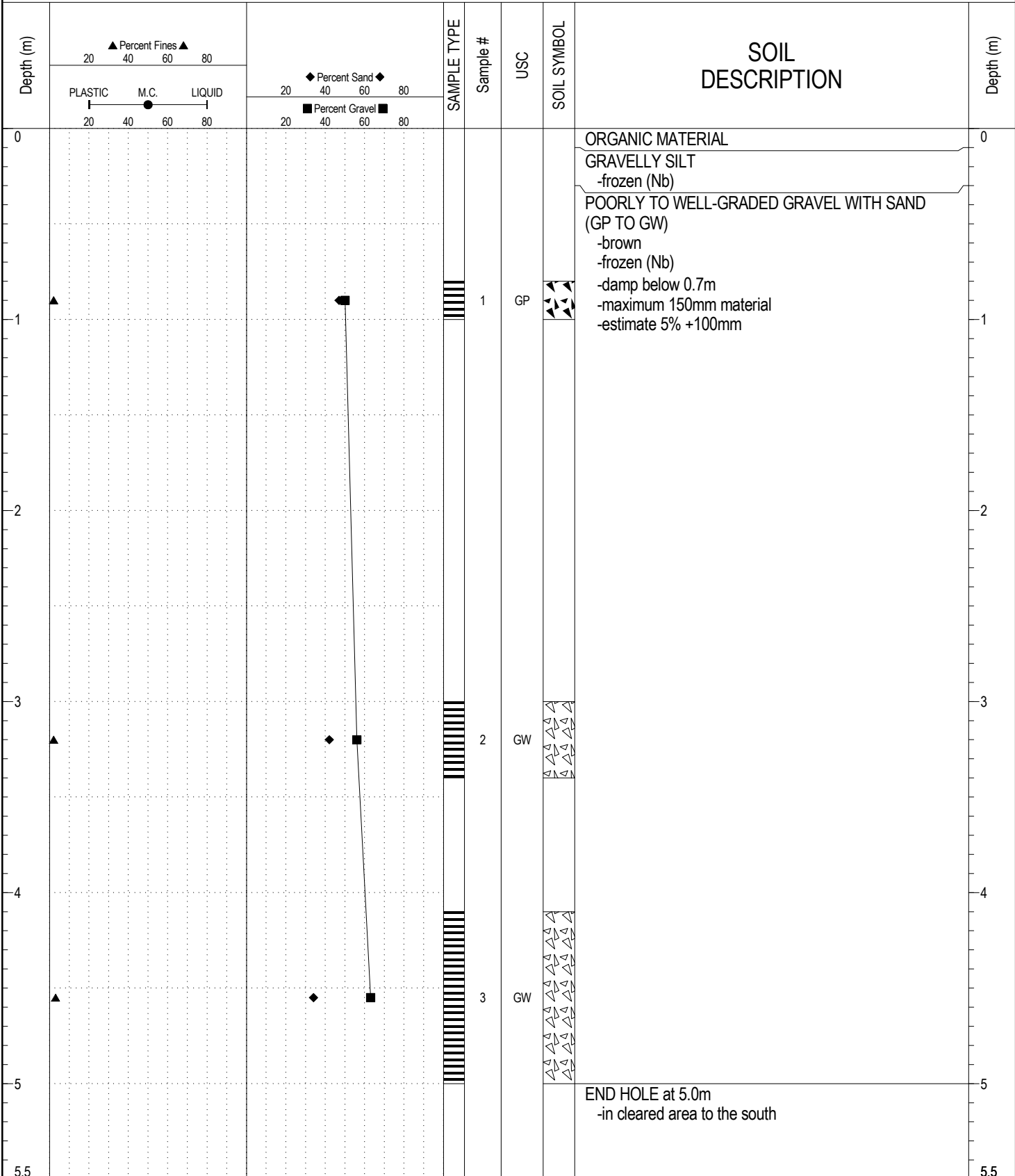


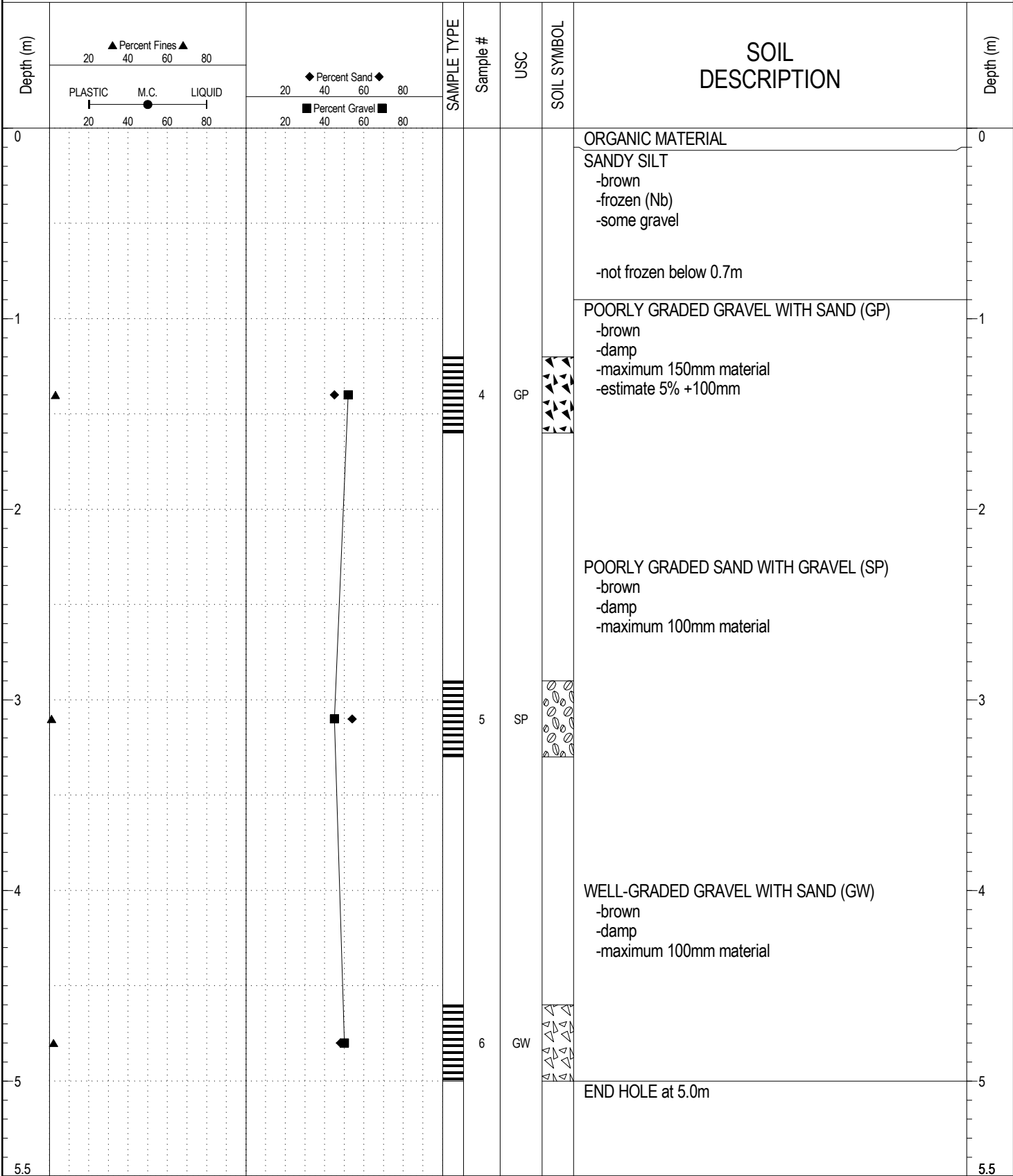
SUBSURFACE EXPLORATION AND TEST REPORT	GRANULAR SOURCE INVESTIGATIONS	BOREHOLE NO: 280-1
ENGINEERING-MAINTENANCE	HWY 02 KM 260.1 RHS	PROJECT NO: 105E-04
BACKHOE: CAT 235	LOCATION: See Plan	ELEVATION: 0 m

SAMPLE TYPE RETURN S.P.T. Auger BULK TUBE CORE



ESE IMPORT LOG GRAVEL 276-280.GPJ YTG.GDT 3/13/19

SAMPLE TYPE RETURN S.P.T. Auger BULK TUBE CORE



ESE IMPORT LOG GRAVEL 276-280.GPJ YTG.GDT 3/13/19

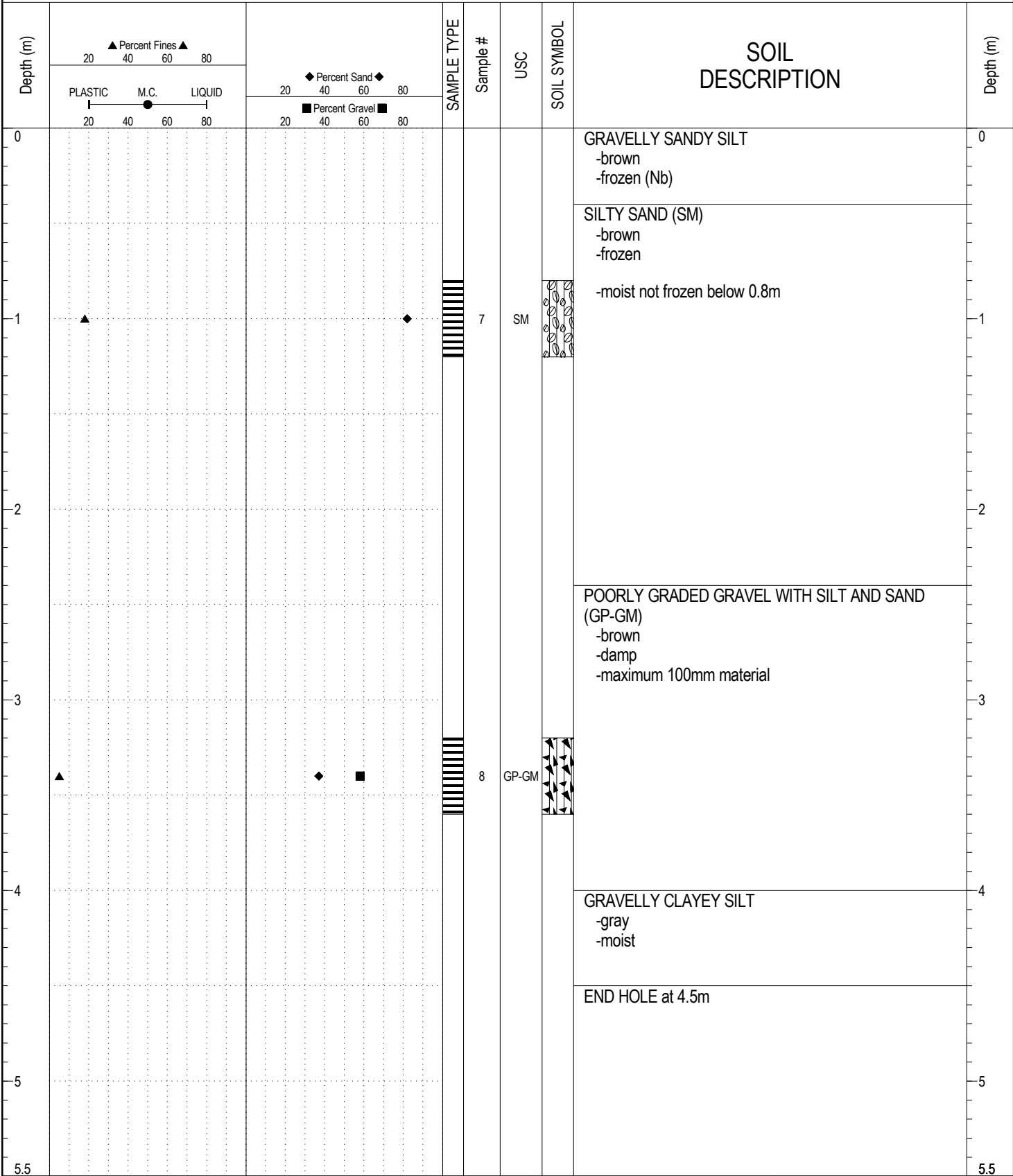
SAMPLE TYPE RETURN S.P.T. Auger BULK TUBE CORE

Depth (m)	<div style="text-align: center;">▲ Percent Fines ▲</div> <div style="text-align: center;">20 40 60 80</div> <div style="text-align: center;">PLASTIC M.C. LIQUID</div> <div style="text-align: center;">20 40 60 80</div>	<div style="text-align: center;">◆ Percent Sand ◆</div> <div style="text-align: center;">20 40 60 80</div> <div style="text-align: center;">■ Percent Gravel ■</div> <div style="text-align: center;">20 40 60 80</div>	SAMPLE TYPE	Sample #	USC	SOIL SYMBOL	SOIL DESCRIPTION	Depth (m)
0							ORGANIC MATERIAL	0
1							SILT -trace of sand -frozen -not frozen below 0.6m -frozen below 1.0m -trace of gravel below 1.6m	1
2							END HOLE at 1.8m -refusal -no ripper -in bush south of pit on ridge above highway -poplar and spruce cover	2
3								3
4								4
5								5
5.5								5.5

ESE IMPORT LOG GRAVEL 276-280.GPJ YTG.GDT 3/13/19

SUBSURFACE EXPLORATION AND TEST REPORT	GRANULAR SOURCE INVESTIGATIONS	BOREHOLE NO: 280-4
ENGINEERING-MAINTENANCE	HWY 02 KM 260.1 RHS	PROJECT NO: 105E-04
BACKHOE: CAT 235	LOCATION: See Plan	ELEVATION: 0 m

SAMPLE TYPE RETURN S.P.T. Auger BULK TUBE CORE



ESE IMPORT LOG GRAVEL 276-280.GPJ YTG.GDT 3/13/19