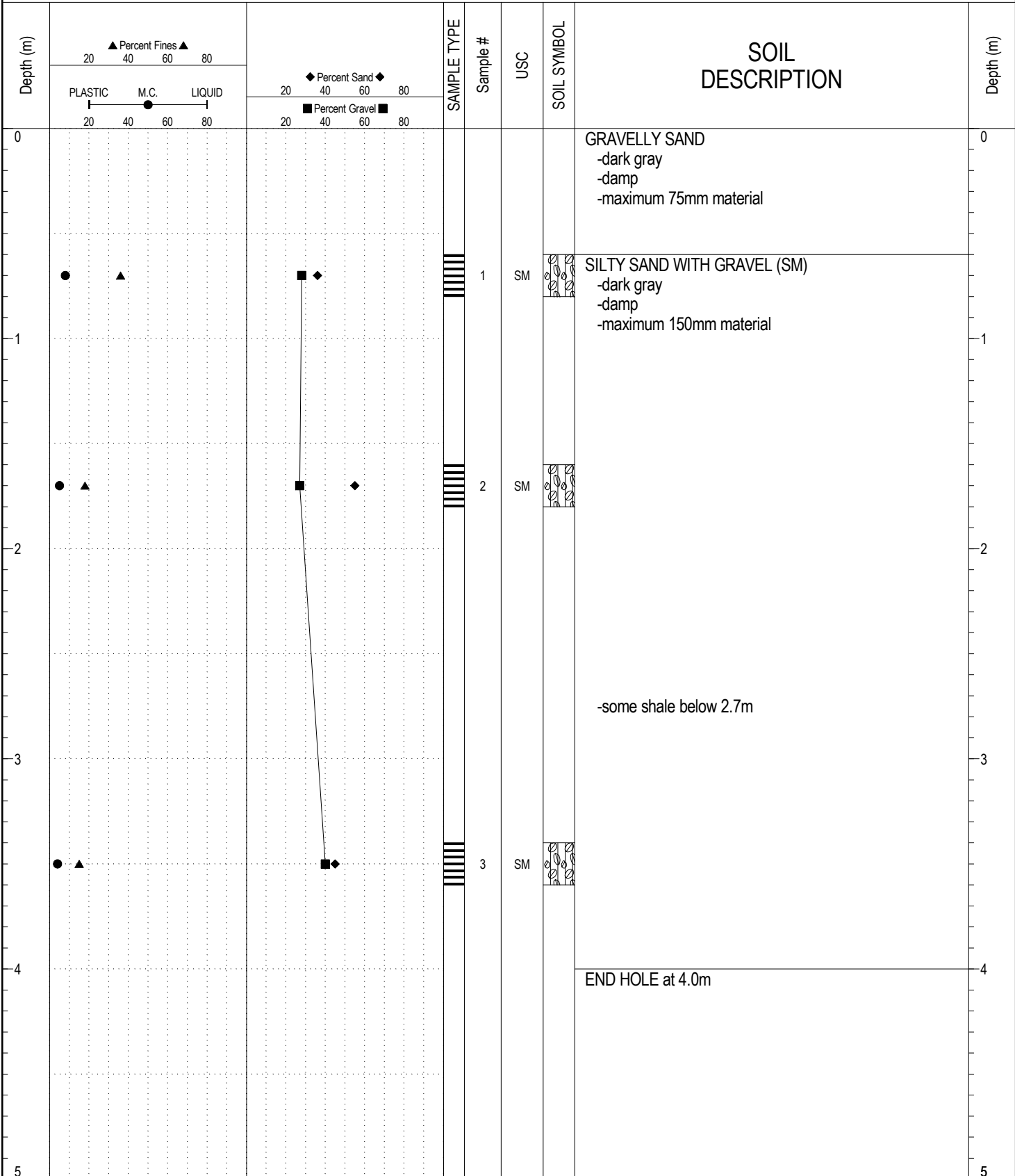


SUBSURFACE EXPLORATION AND TEST REPORT		ANVIL RANGE ROAD GRANULAR INVESTIGATION	BOREHOLE NO: 367-01
ENGINEERING-MAINTENANCE		KM 7.1 RHS	PROJECT NO: 091-260130-5908
BACKHOE: CAT 225		LOCATION: See Plan	ELEVATION: 0 m

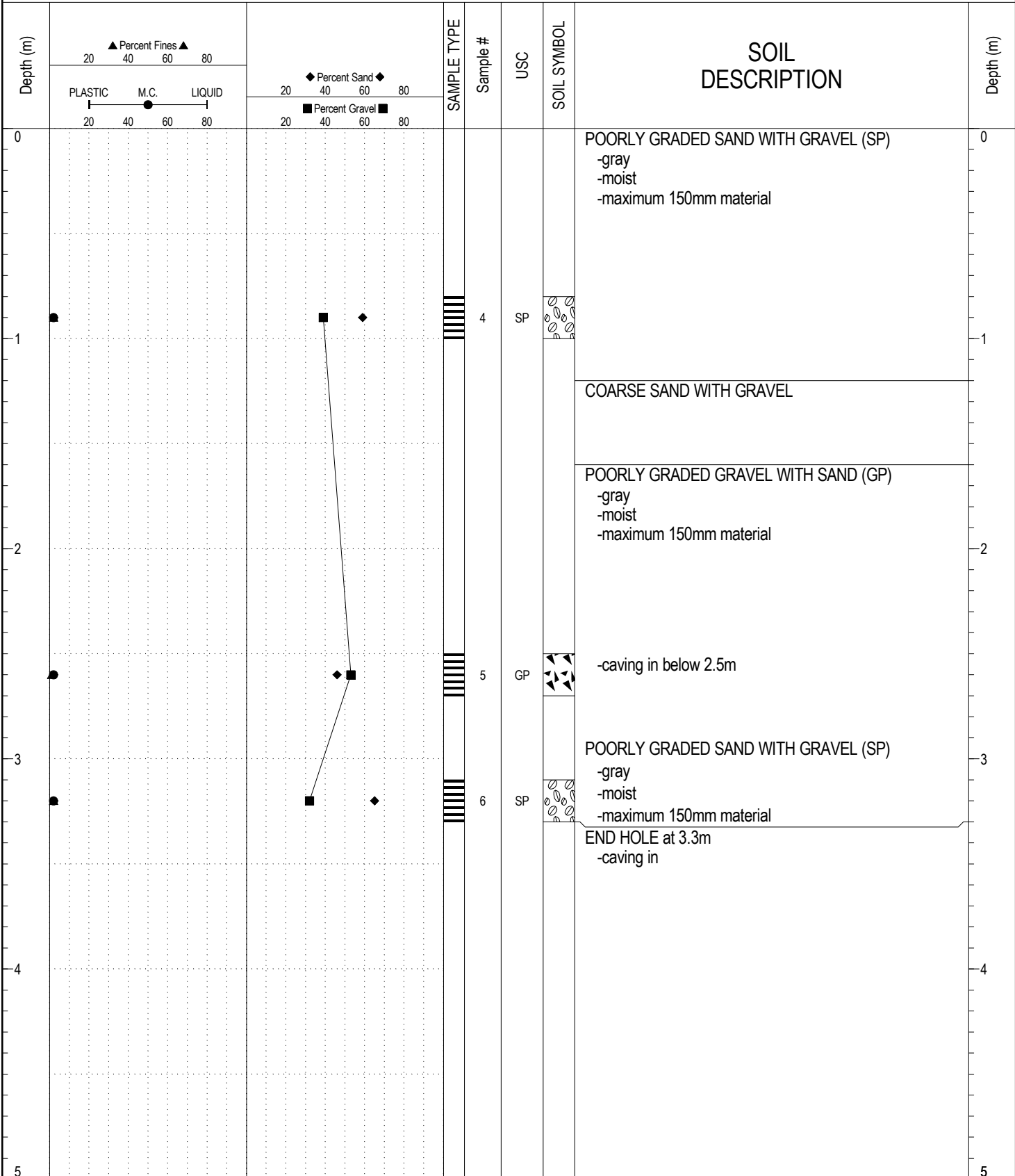
SAMPLE TYPE RETURN S.P.T. Auger BULK TUBE CORE



ESE IMPORT LOG GRAVEL 366-370.GPJ YTG.GDT 5/30/16

SUBSURFACE EXPLORATION AND TEST REPORT	ANVIL RANGE ROAD GRANULAR INVESTIGATION	BOREHOLE NO: 367-02
ENGINEERING-MAINTENANCE	KM 7.1 RHS	PROJECT NO: 091-260130-5908
BACKHOE: CAT 225	LOCATION: See Plan	ELEVATION: 0 m

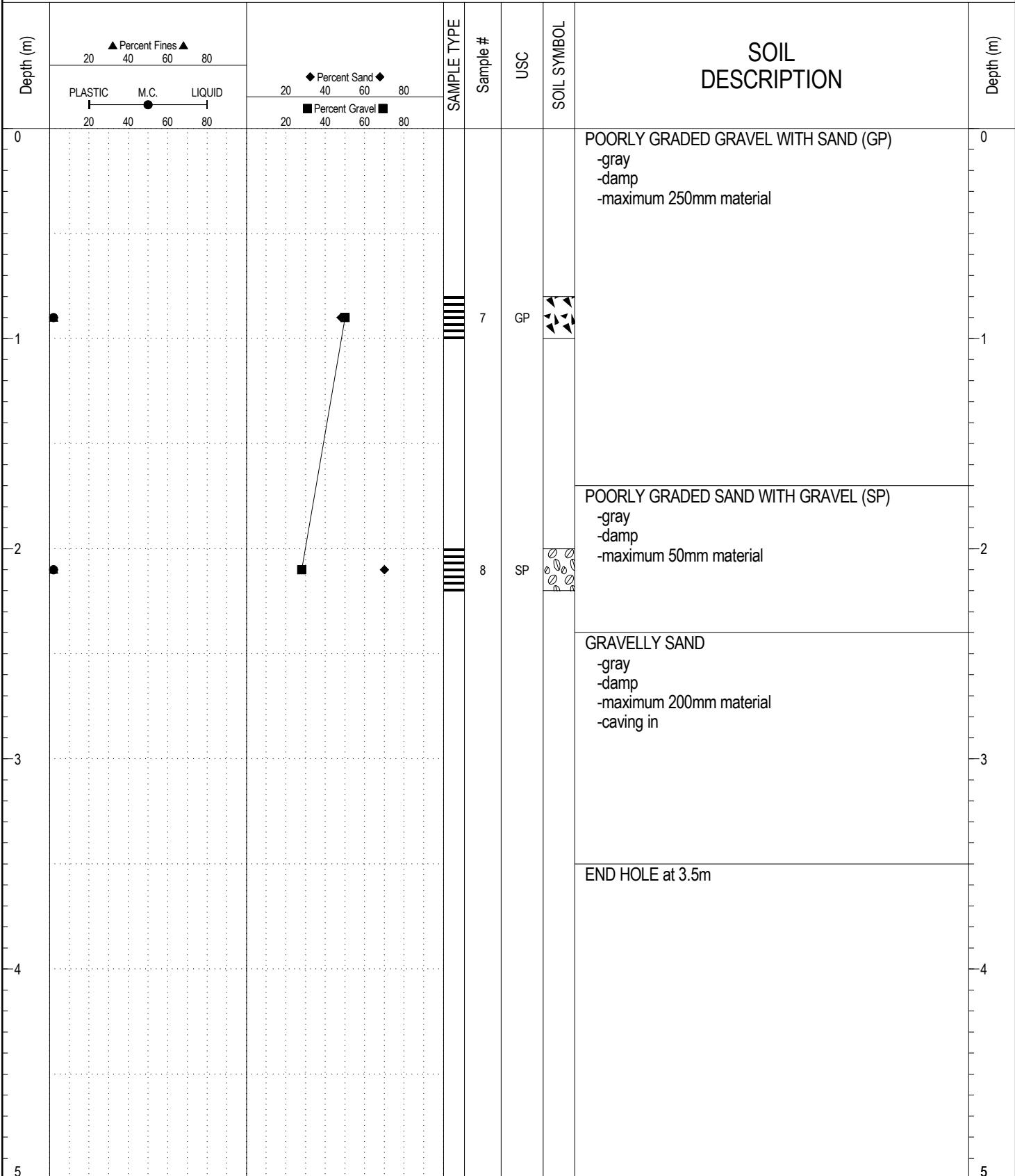
SAMPLE TYPE RETURN S.P.T. Auger BULK TUBE CORE



ESE IMPORT LOG GRAVEL 366-370.GPJ YTG.GDT 5/30/16

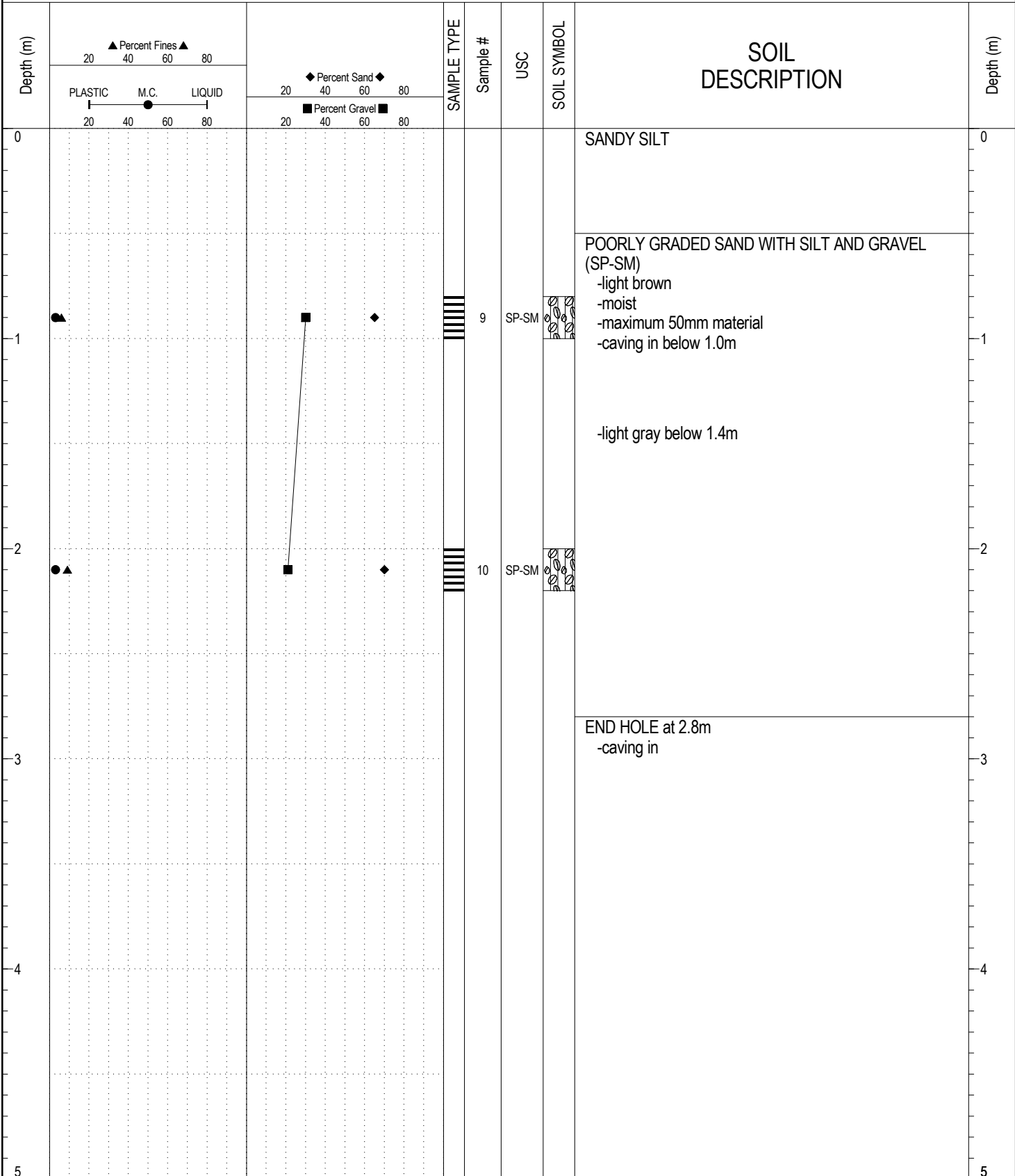
SUBSURFACE EXPLORATION AND TEST REPORT	ANVIL RANGE ROAD GRANULAR INVESTIGATION	BOREHOLE NO: 367-03
ENGINEERING-MAINTENANCE	KM 7.1 RHS	PROJECT NO: 091-260130-5908
BACKHOE: CAT 225	LOCATION: See Plan	ELEVATION: 0 m

SAMPLE TYPE RETURN S.P.T. Auger BULK TUBE CORE



ESE IMPORT LOG GRAVEL 366-370.GPJ YTG.GDT 5/30/16

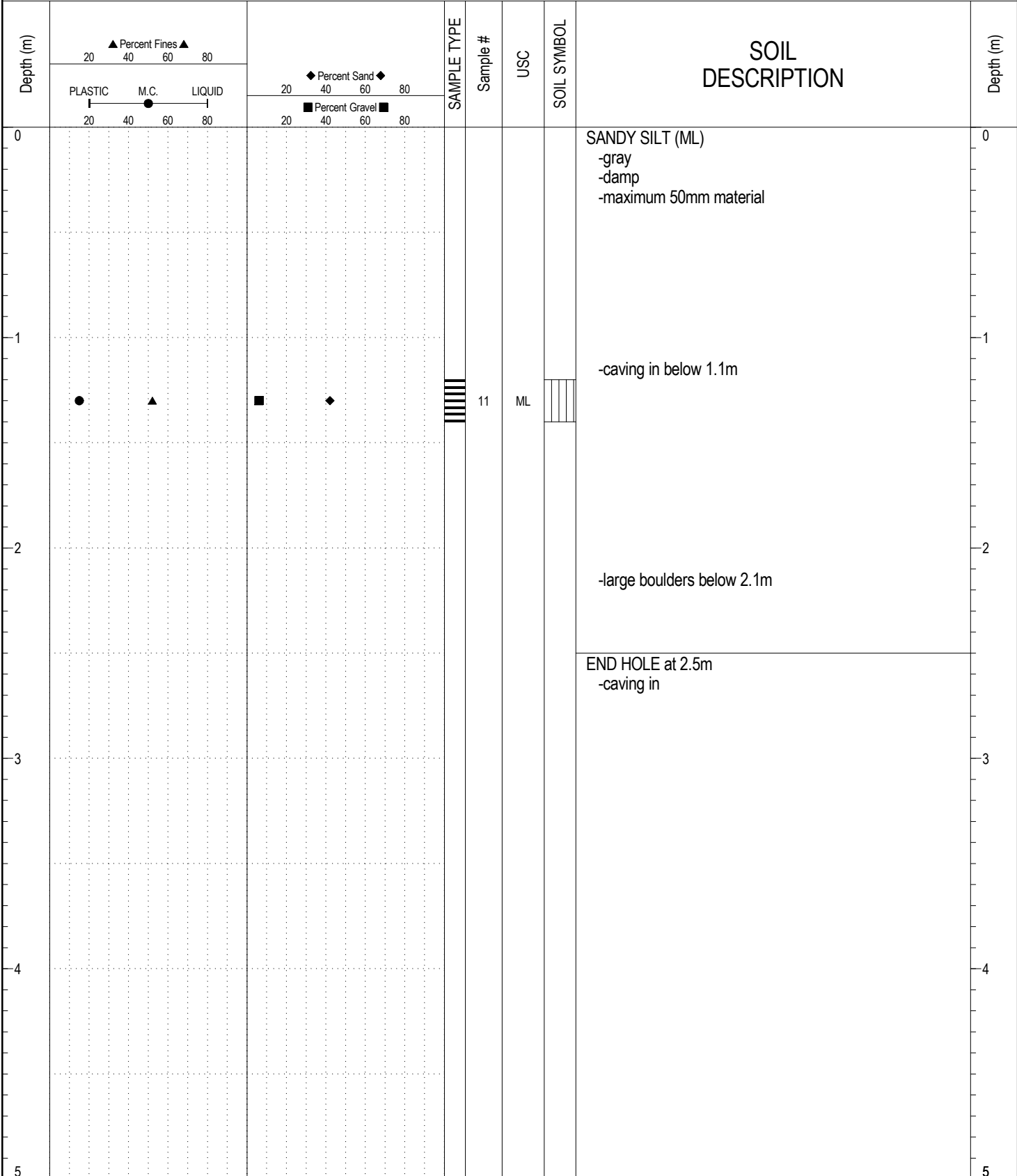
SAMPLE TYPE RETURN S.P.T. Auger BULK TUBE CORE



ESE IMPORT LOG GRAVEL 366-370.GPJ YTG.GDT 5/30/16

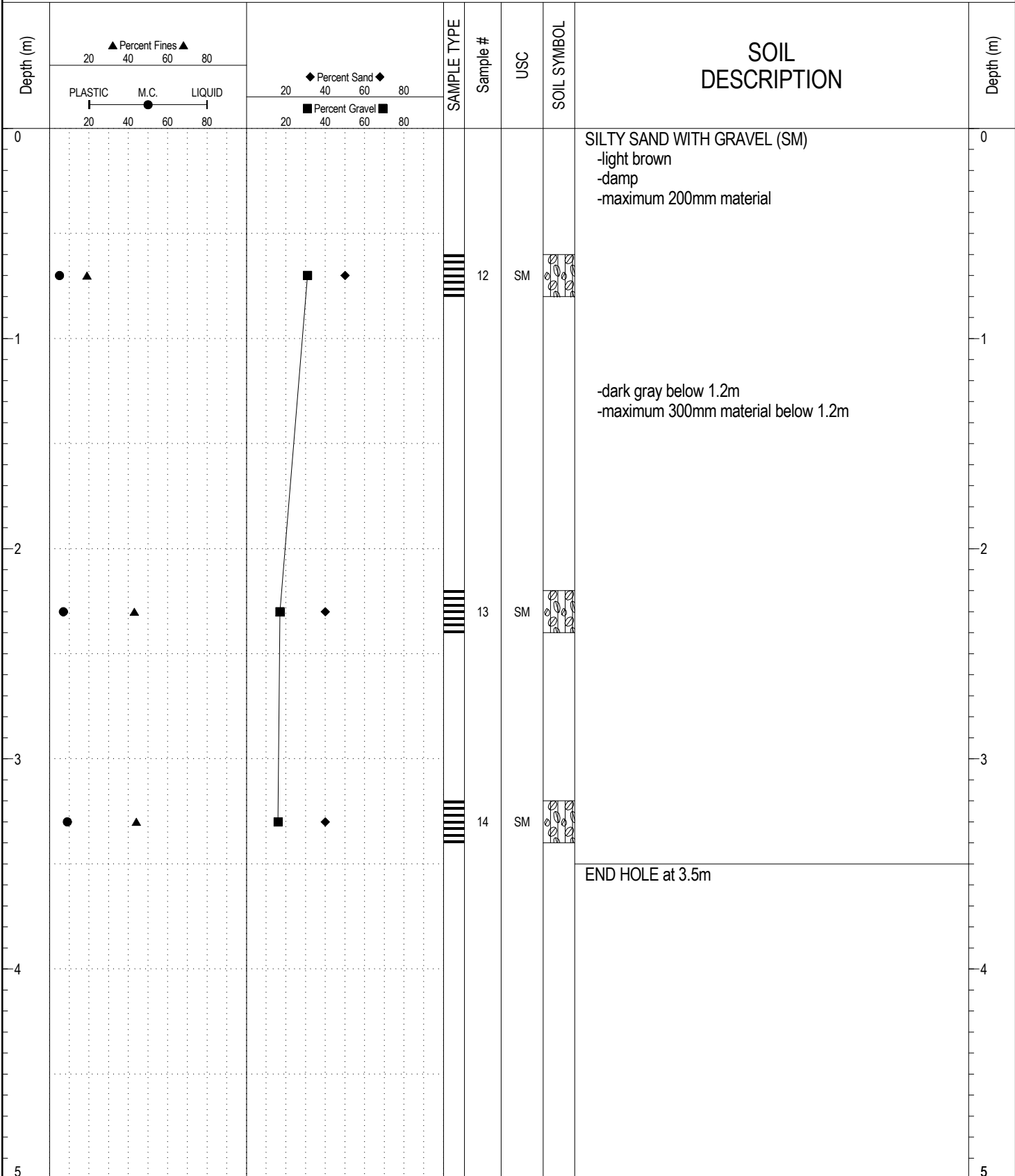
SUBSURFACE EXPLORATION AND TEST REPORT	ANVIL RANGE ROAD GRANULAR INVESTIGATION	BOREHOLE NO: 367-05
ENGINEERING-MAINTENANCE	KM 7.1 RHS	PROJECT NO: 091-260130-5908
BACKHOE: CAT 225	LOCATION: See Plan	ELEVATION: 0 m

SAMPLE TYPE RETURN S.P.T. Auger BULK TUBE CORE



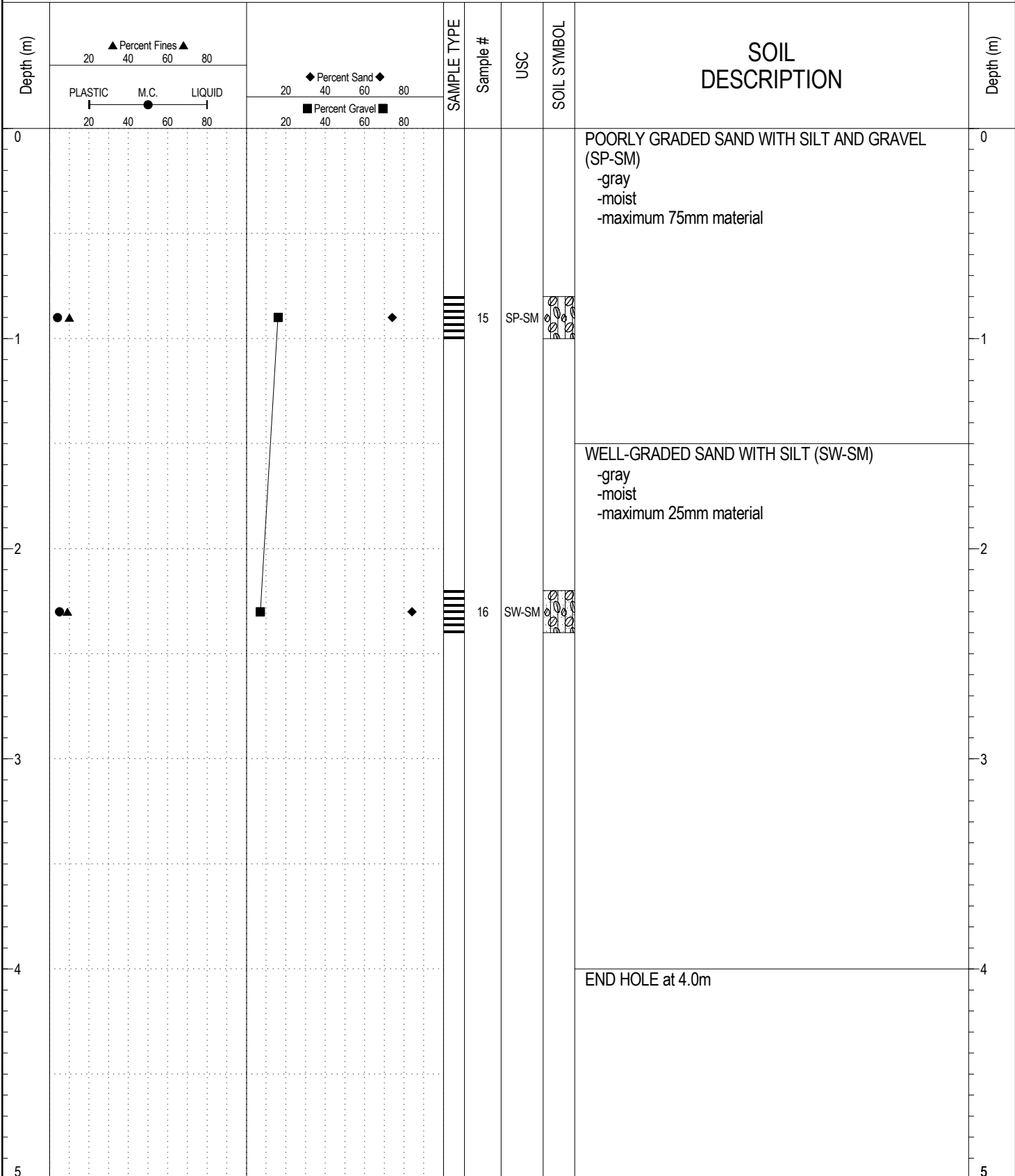
ESE IMPORT LOG GRAVEL 366-370.GPJ YTG.GDT 5/30/16

SAMPLE TYPE RETURN S.P.T. Auger BULK TUBE CORE



ESE IMPORT LOG GRAVEL 366-370.GPJ YTG.GDT 5/30/16

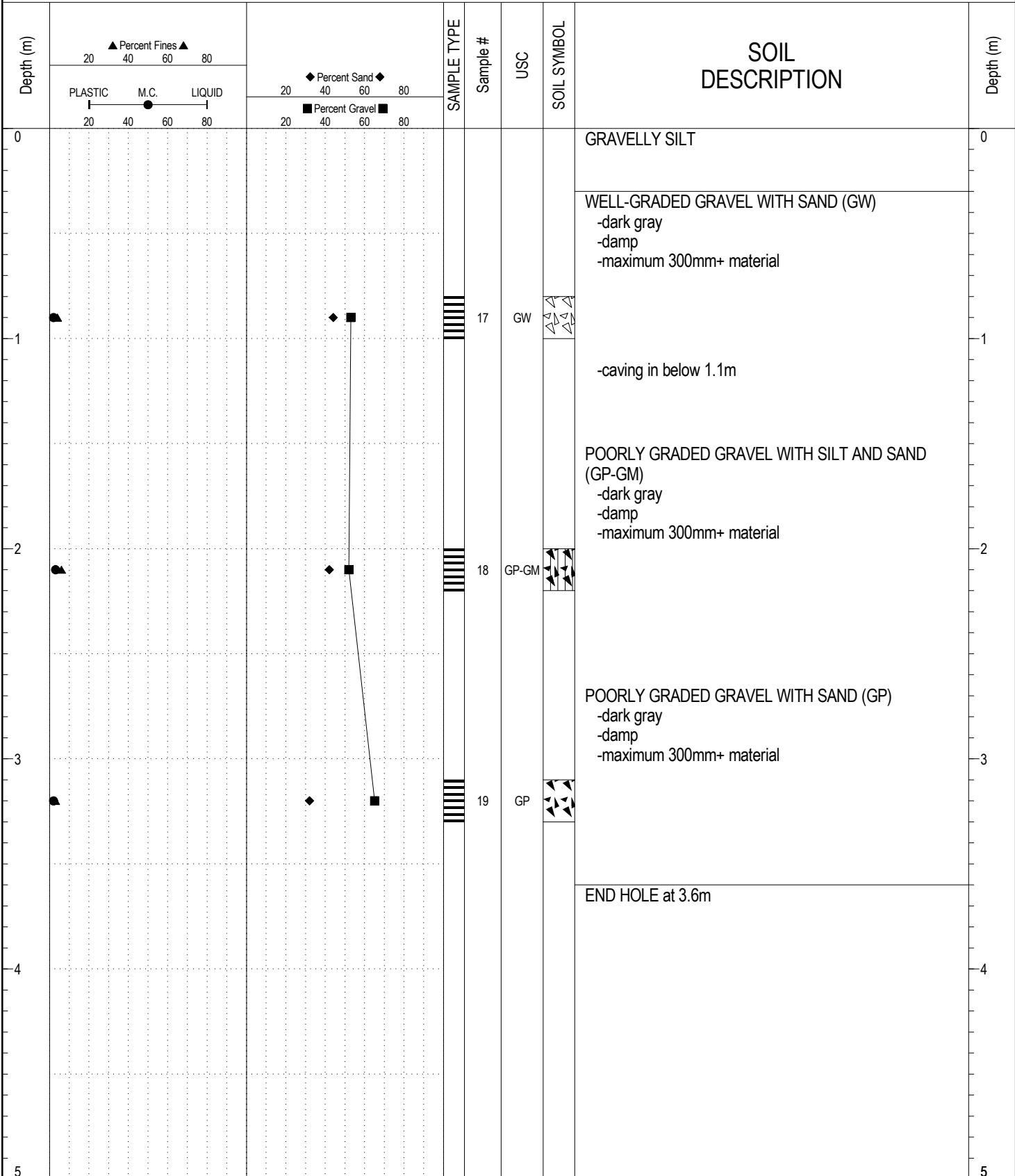
SAMPLE TYPE RETURN S.P.T. Auger BULK TUBE CORE



ESE IMPORT LOG GRAVEL 366-370.GPJ YTG.GDT 5/30/16

SUBSURFACE EXPLORATION AND TEST REPORT	MITCHELL ROAD GRANULAR INVESTIGATION	BOREHOLE NO: 367-08
ENGINEERING-MAINTENANCE	KM 8.2 LHS	PROJECT NO: 091-260130-5908
BACKHOE: CAT 225	LOCATION: See Plan	ELEVATION: 0 m

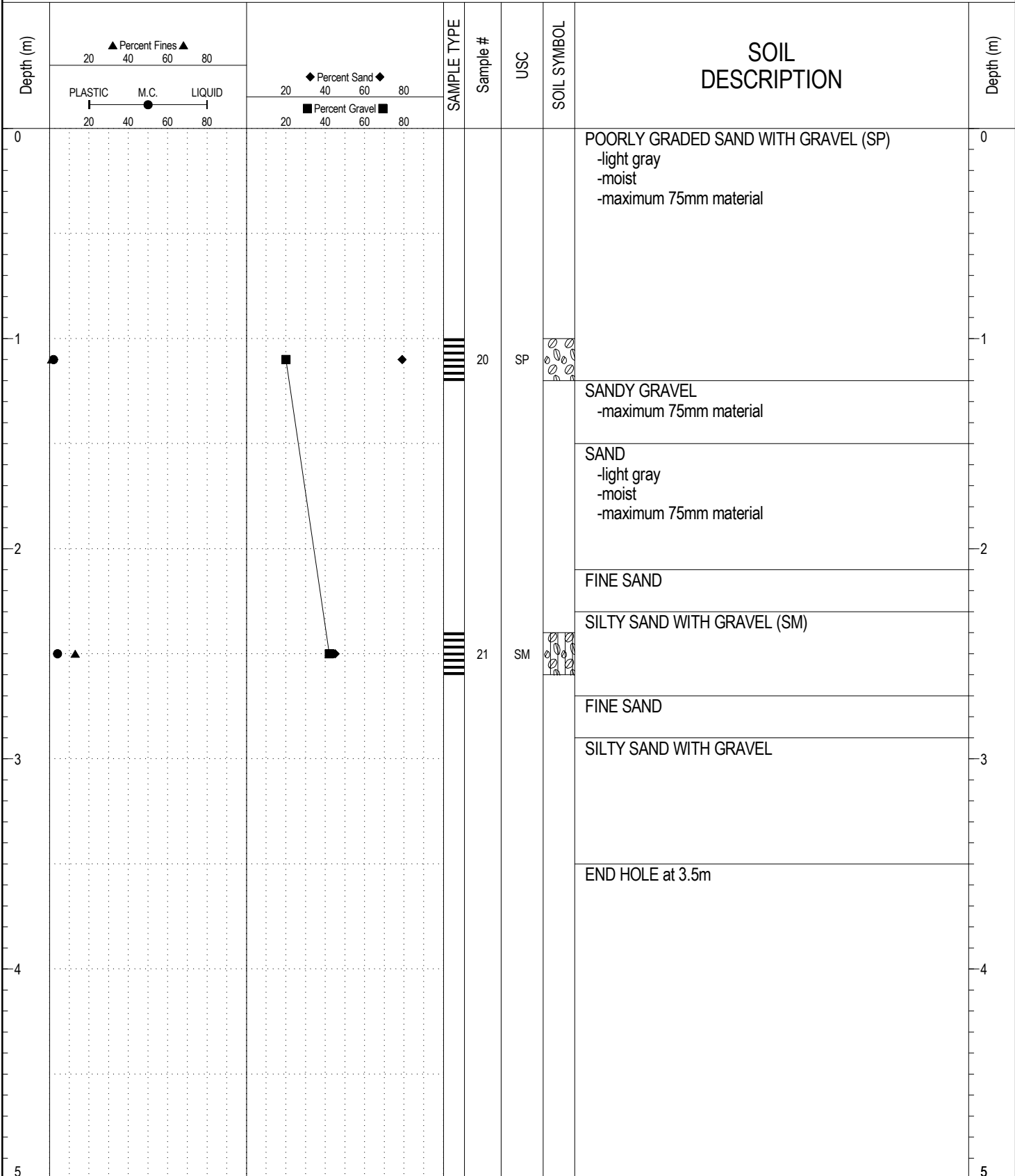
SAMPLE TYPE RETURN S.P.T. Auger BULK TUBE CORE



ESE IMPORT LOG GRAVEL 366-370.GPJ YTG.GDT 5/30/16

SUBSURFACE EXPLORATION AND TEST REPORT	MITCHELL ROAD GRANULAR INVESTIGATION	BOREHOLE NO: 367-09
ENGINEERING-MAINTENANCE	KM 8.2 LHS	PROJECT NO: 091-260130-5908
BACKHOE: CAT 225	LOCATION: See Plan	ELEVATION: 0 m

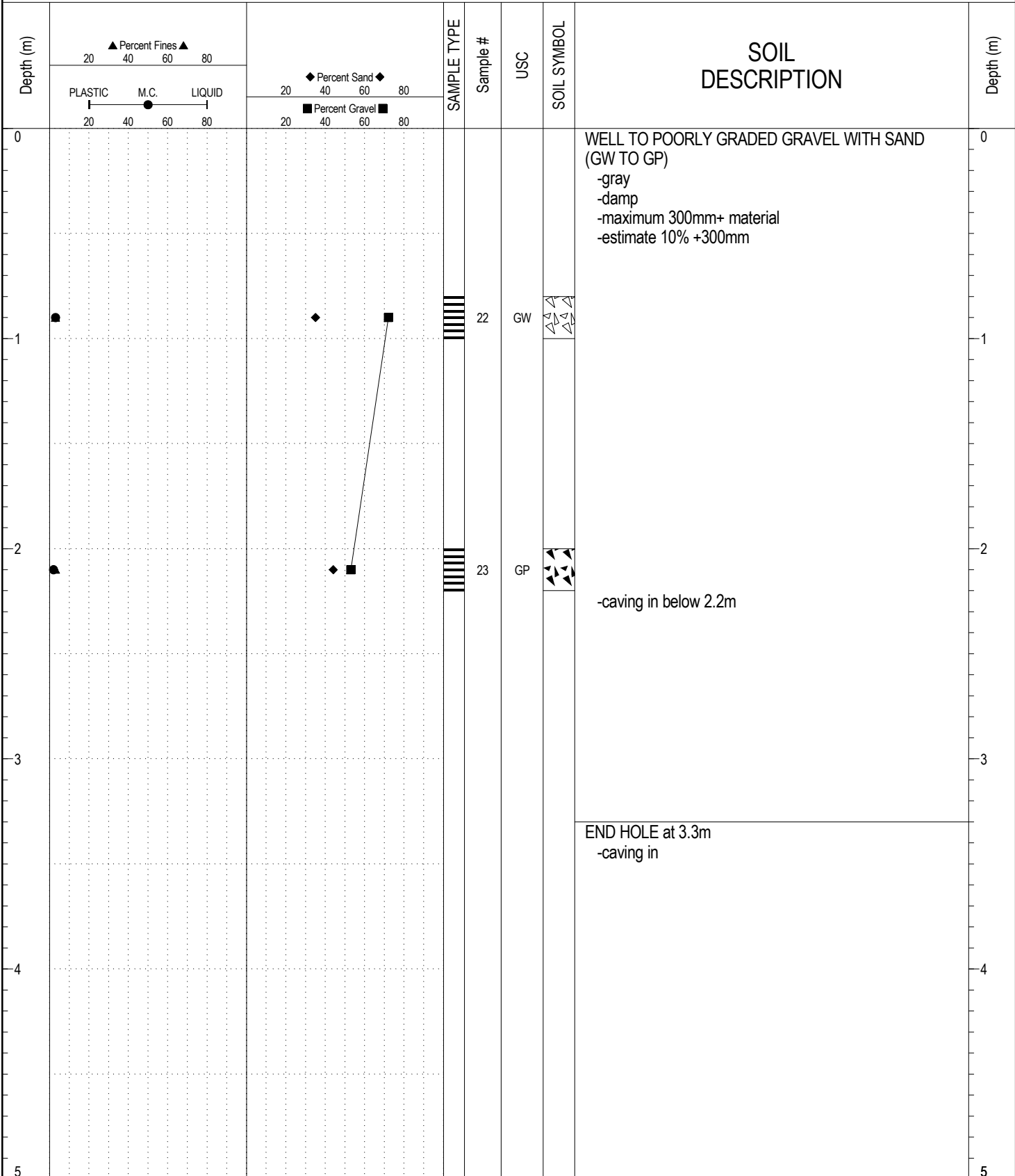
SAMPLE TYPE RETURN S.P.T. Auger BULK TUBE CORE



ESE IMPORT LOG GRAVEL 366-370.GPJ YTG.GDT 5/30/16

SUBSURFACE EXPLORATION AND TEST REPORT	MITCHELL ROAD GRANULAR INVESTIGATION	BOREHOLE NO: 367-10
ENGINEERING-MAINTENANCE	KM 8.2 LHS	PROJECT NO: 091-260130-5908
BACKHOE: CAT 225	LOCATION: See Plan	ELEVATION: 0 m

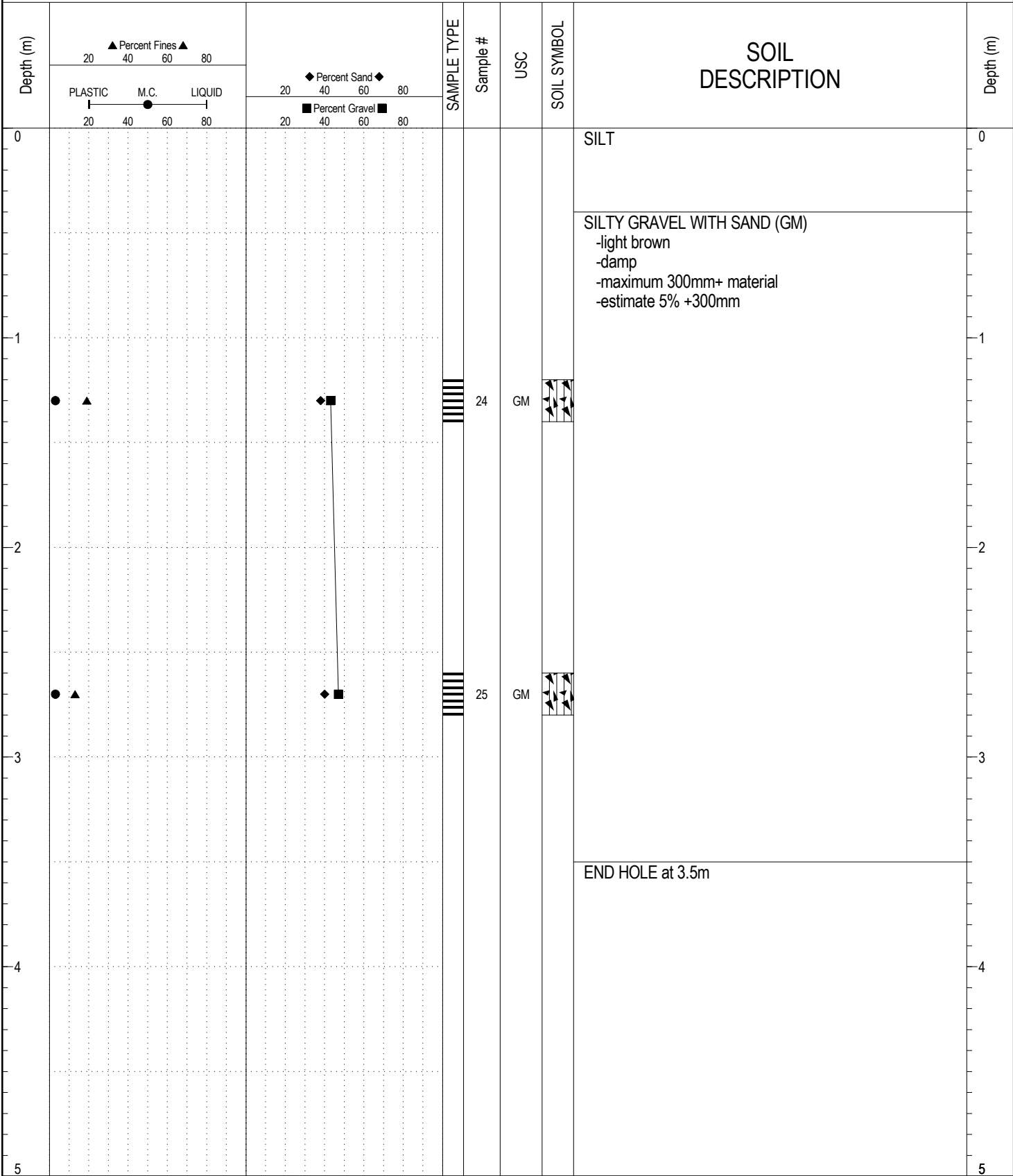
SAMPLE TYPE RETURN S.P.T. Auger BULK TUBE CORE



ESE IMPORT LOG GRAVEL 366-370.GPJ YTG.GDT 5/30/16

SUBSURFACE EXPLORATION AND TEST REPORT	MITCHELL ROAD GRANULAR INVESTIGATION	BOREHOLE NO: 367-11
ENGINEERING-MAINTENANCE	KM 8.2 LHS	PROJECT NO: 091-260130-5908
BACKHOE: CAT 225	LOCATION: See Plan	ELEVATION: 0 m

SAMPLE TYPE RETURN S.P.T. Auger BULK TUBE CORE



ESE IMPORT LOG GRAVEL 366-370.GPJ YTG.GDT 5/30/16

SUBSURFACE EXPLORATION AND TEST REPORT	MITCHELL ROAD GRANULAR INVESTIGATION	BOREHOLE NO: 367-12
ENGINEERING-MAINTENANCE	KM 8.2 LHS	PROJECT NO: 091-260130-5908
BACKHOE: CAT 225	LOCATION: See Plan	ELEVATION: 0 m

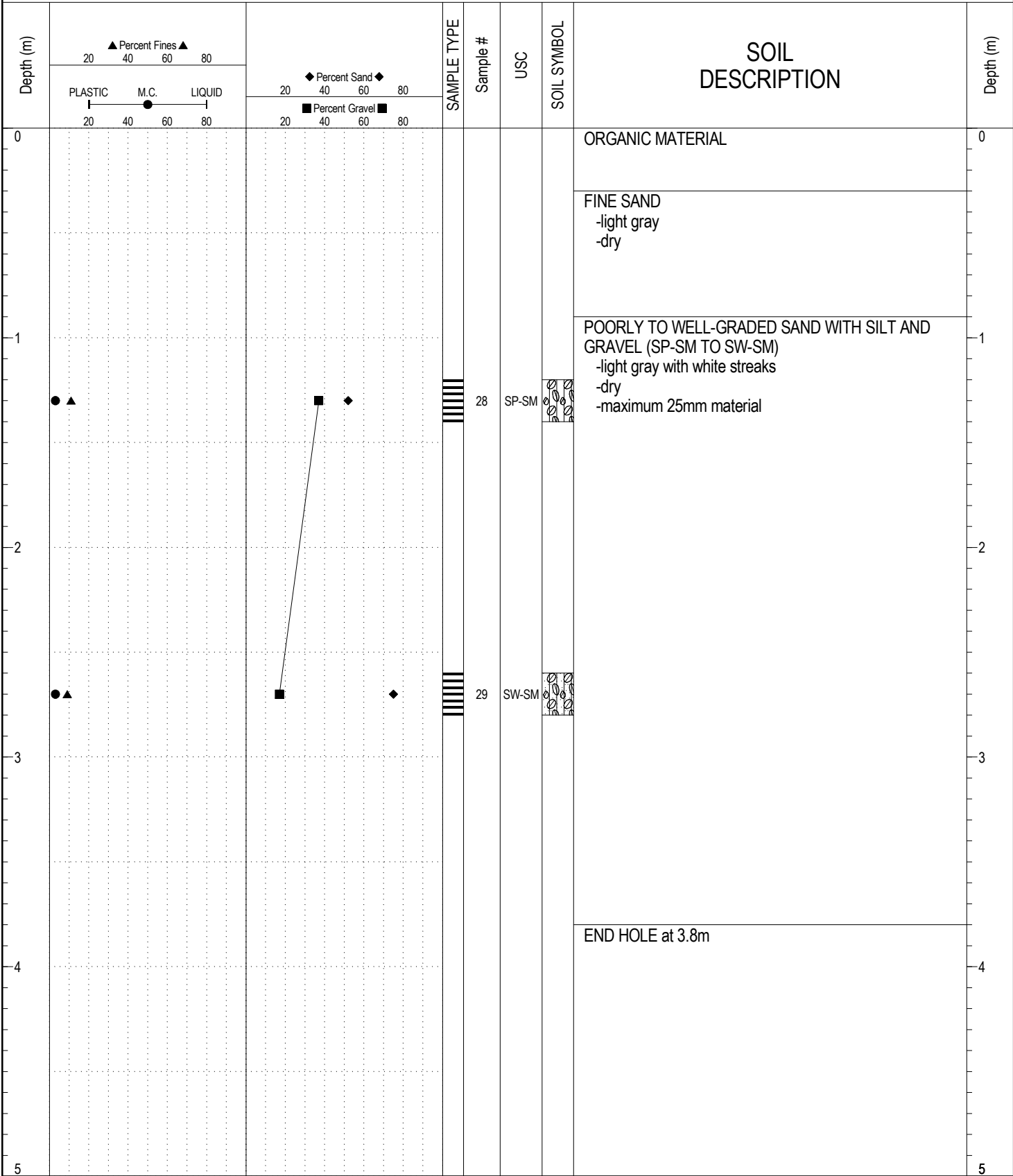
SAMPLE TYPE RETURN S.P.T. Auger BULK TUBE CORE

Depth (m)	▲ Percent Fines ▲		◆ Percent Sand ◆		SAMPLE TYPE	Sample #	USC	SOIL SYMBOL	SOIL DESCRIPTION	Depth (m)
	20	40	60	80						
0	PLASTIC M.C. LIQUID								ORGANIC MATERIAL	0
1									SANDY GRAVEL -light gray -dry -maximum 200mm material	1
2									-sample #26 lost	2
3									-sample #27 lost	3
4									-caving in below 3.0m	4
5									END HOLE at 3.3m	5

ESE IMPORT LOG GRAVEL 366-370.GPJ YTG.GDT 5/30/16

SUBSURFACE EXPLORATION AND TEST REPORT	MITCHELL ROAD GRANULAR INVESTIGATION	BOREHOLE NO: 367-13
ENGINEERING-MAINTENANCE	KM 8.2 LHS	PROJECT NO: 091-260130-5908
BACKHOE: CAT 225	LOCATION: See Plan	ELEVATION: 0 m

SAMPLE TYPE RETURN S.P.T. Auger BULK TUBE CORE



ESE IMPORT LOG GRAVEL 366-370.GPJ YTG.GDT 5/30/16

SUBSURFACE EXPLORATION AND TEST REPORT	MITCHELL ROAD GRANULAR INVESTIGATION	BOREHOLE NO: 367-14
ENGINEERING-MAINTENANCE	KM 8.2 LHS	PROJECT NO: 091-260130-5908
BACKHOE: CAT 225	LOCATION: See Plan	ELEVATION: 0 m

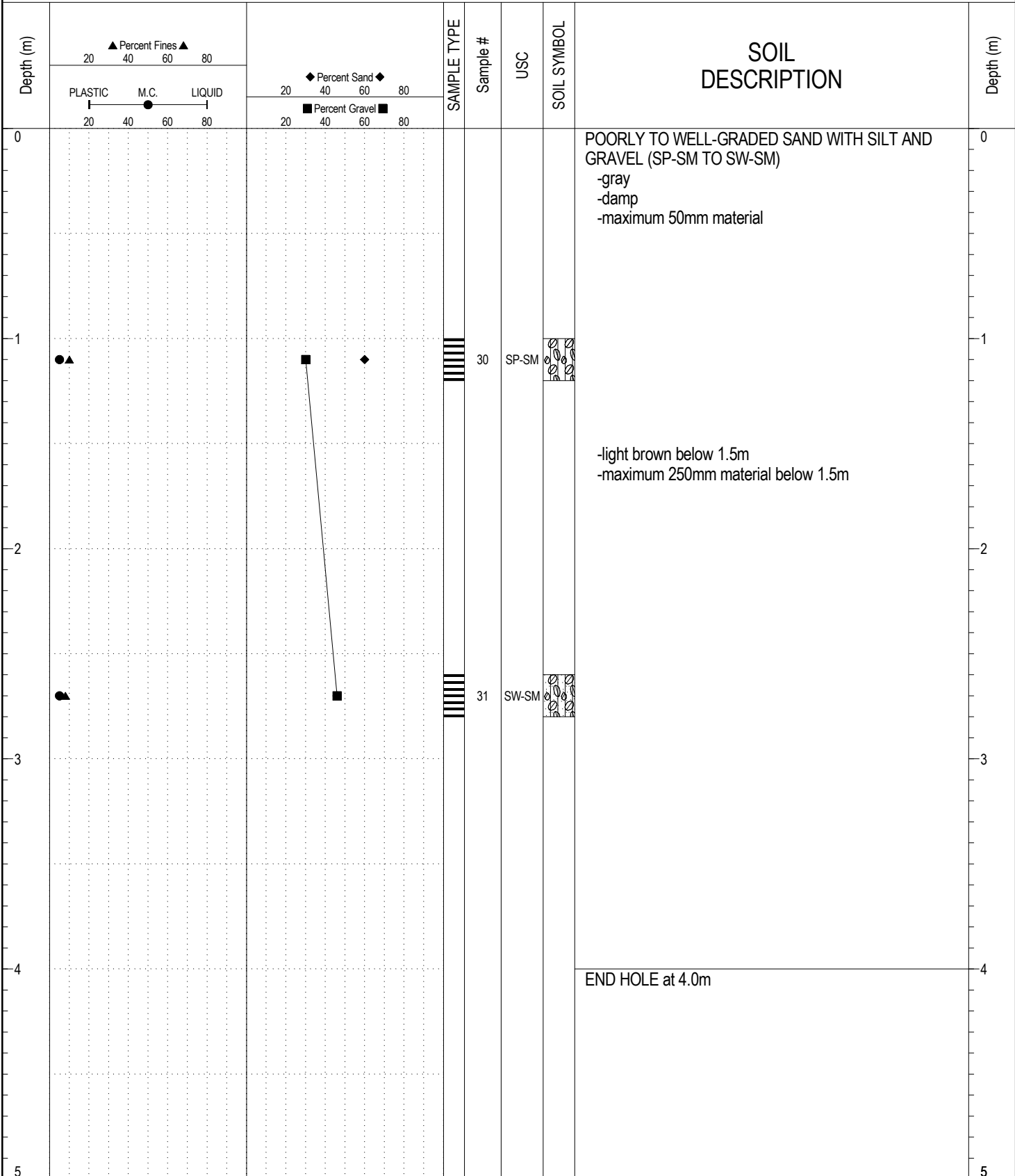
SAMPLE TYPE RETURN S.P.T. Auger BULK TUBE CORE

Depth (m)	▲ Percent Fines ▲		◆ Percent Sand ◆		SAMPLE TYPE	Sample #	USC	SOIL SYMBOL	SOIL DESCRIPTION	Depth (m)
	20	40	60	80						
0	PLASTIC — M.C. — LIQUID 20 40 60 80		20 40 60 80 20 40 60 80						SAND -gray -damp	0
1									GRAVELLY SAND -gray to brown -damp -maximum 350mm material -caving in	1
2									END HOLE at 2.8m -caving in	2
3										3
4										4
5										5

ESE IMPORT LOG GRAVEL 366-370.GPJ YTG.GDT 5/30/16

SUBSURFACE EXPLORATION AND TEST REPORT	ANVIL RANGE ROAD GRANULAR INVESTIGATION	BOREHOLE NO: 367-15
ENGINEERING-MAINTENANCE	KM 1.2 LHS	PROJECT NO: 091-260130-5908
BACKHOE: CAT 225	LOCATION: See Plan	ELEVATION: 0 m

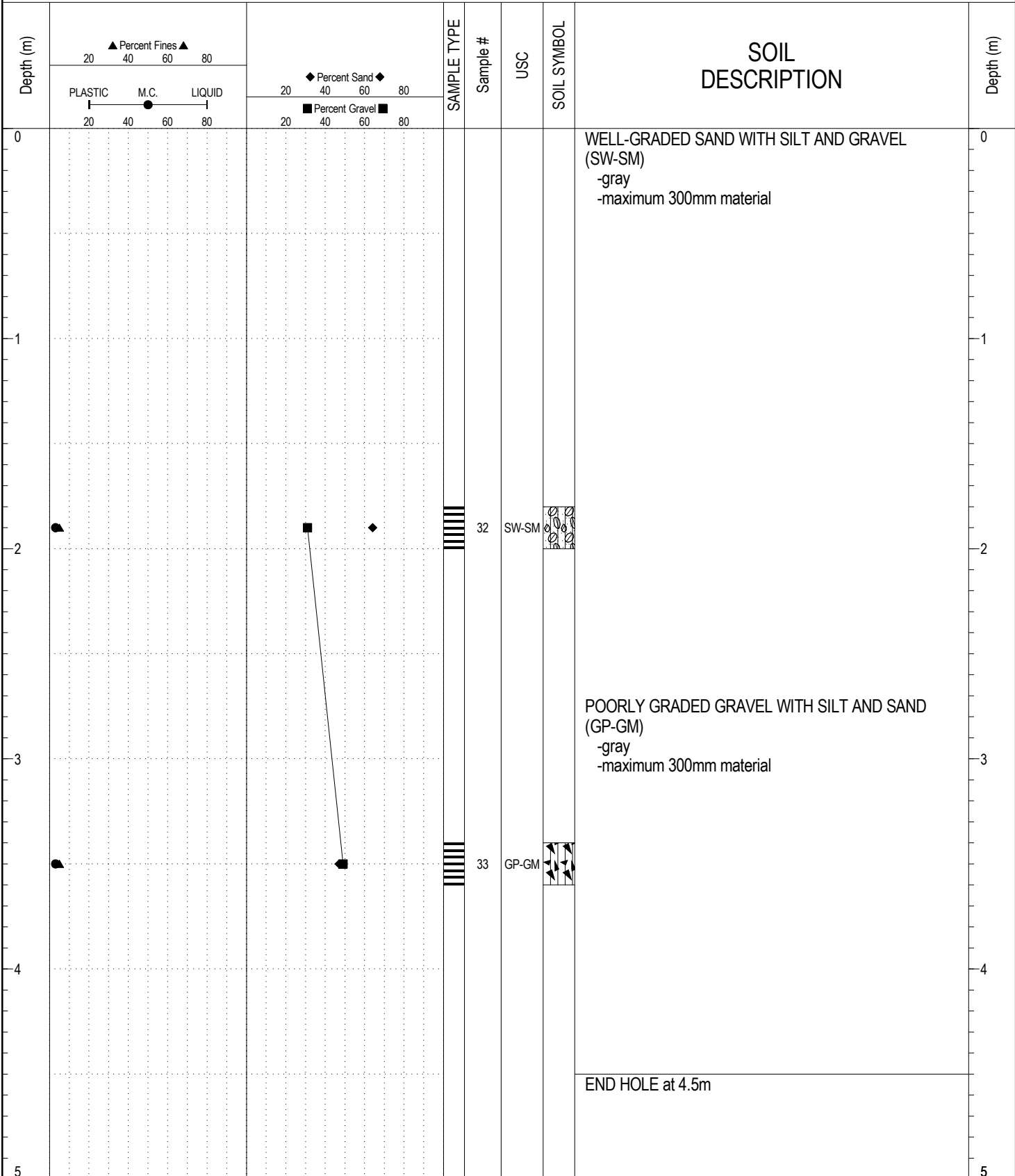
SAMPLE TYPE RETURN S.P.T. Auger BULK TUBE CORE



ESE IMPORT LOG GRAVEL 366-370.GPJ YTG.GDT 5/30/16

SUBSURFACE EXPLORATION AND TEST REPORT	ANVIL RANGE ROAD GRANULAR INVESTIGATION	BOREHOLE NO: 367-16
ENGINEERING-MAINTENANCE	KM 1.2 LHS	PROJECT NO: 091-260130-5908
BACKHOE: CAT 225	LOCATION: See Plan	ELEVATION: 0 m

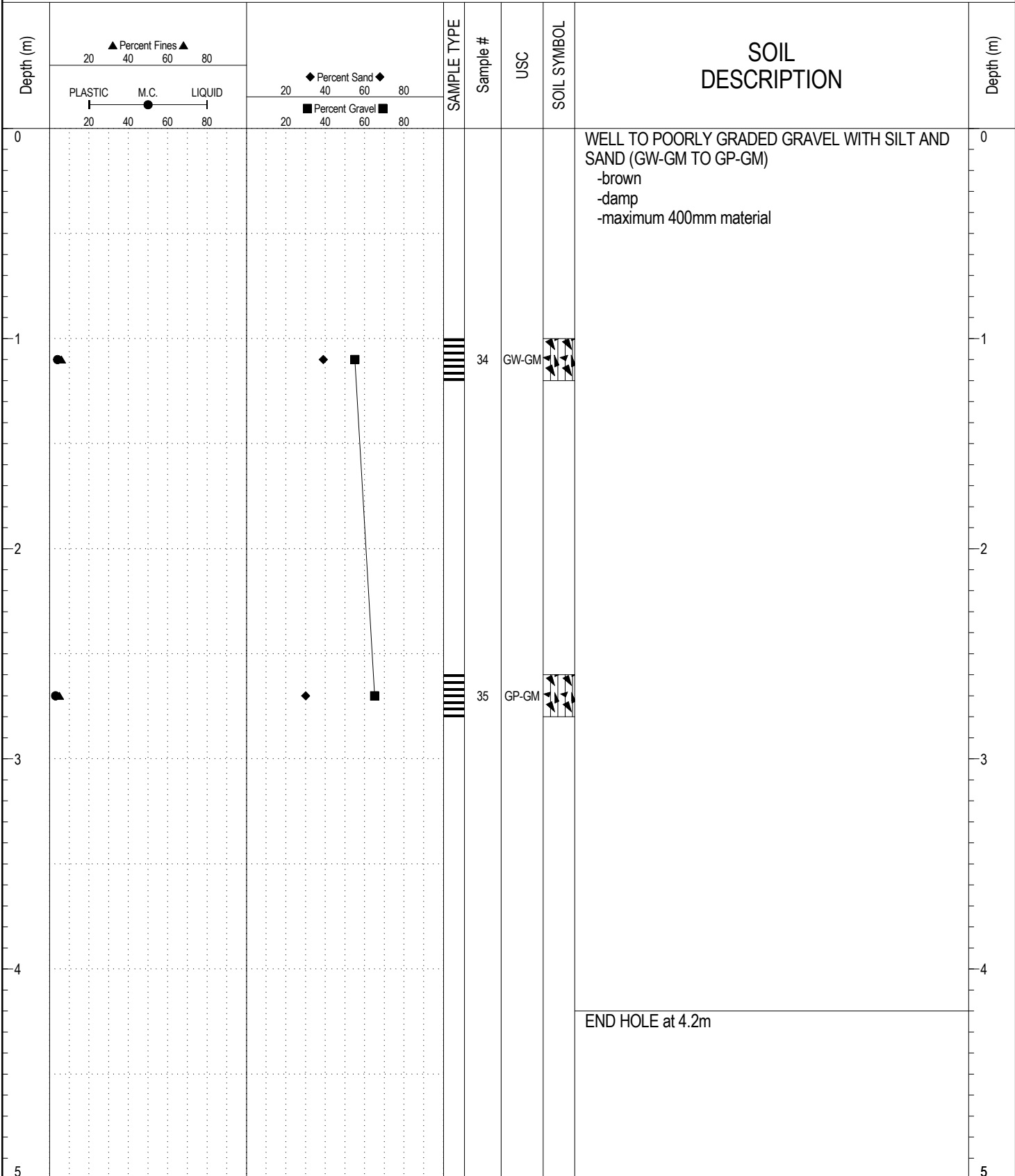
SAMPLE TYPE RETURN S.P.T. Auger BULK TUBE CORE



ESE IMPORT LOG GRAVEL 366-370.GPJ YTG.GDT 5/30/16

SUBSURFACE EXPLORATION AND TEST REPORT	ANVIL RANGE ROAD GRANULAR INVESTIGATION	BOREHOLE NO: 367-17
ENGINEERING-MAINTENANCE	KM 1.2 LHS	PROJECT NO: 091-260130-5908
BACKHOE: CAT 225	LOCATION: See Plan	ELEVATION: 0 m

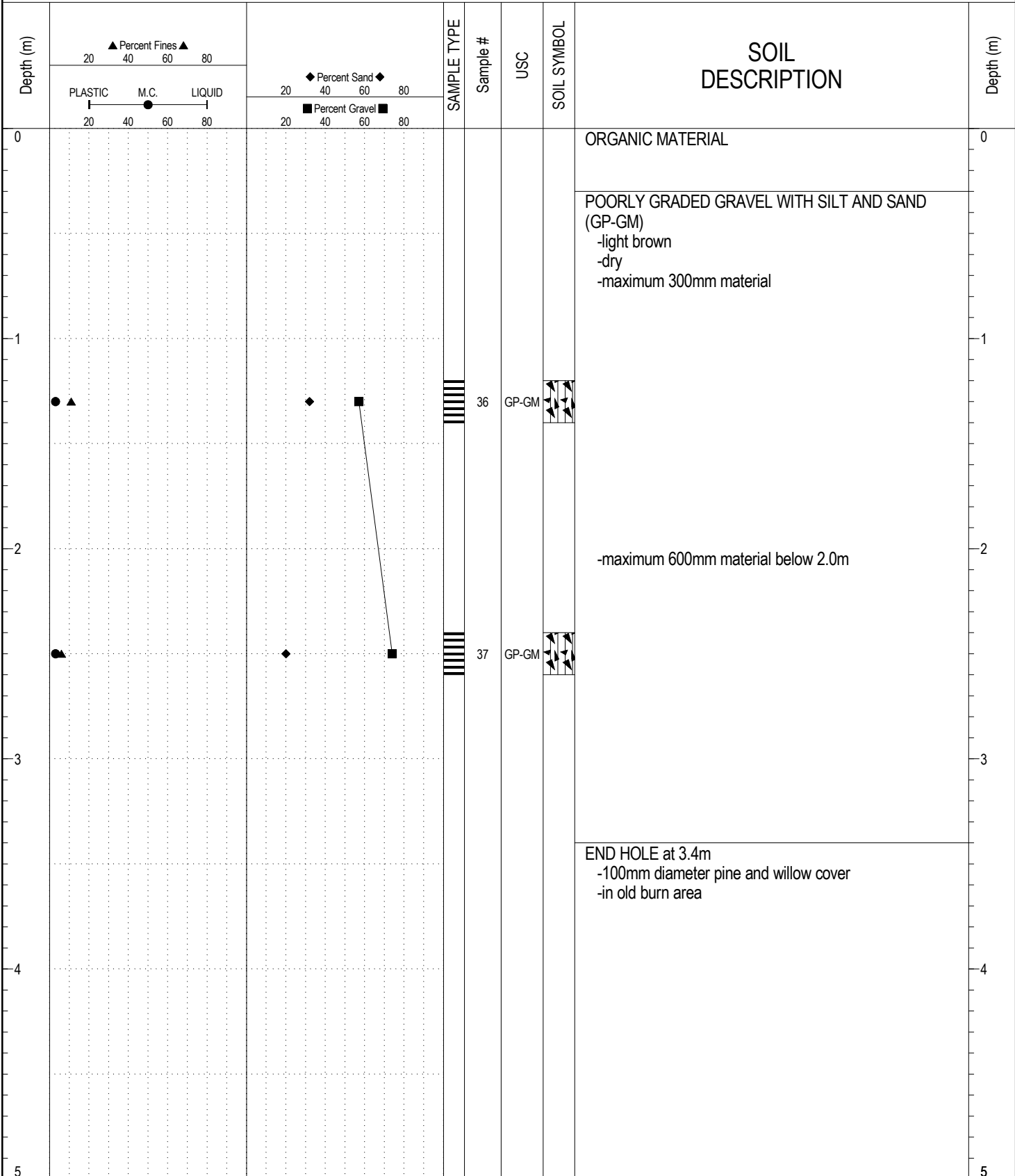
SAMPLE TYPE RETURN S.P.T. Auger BULK TUBE CORE



ESE IMPORT LOG GRAVEL 366-370.GPJ YTG.GDT 5/30/16

SUBSURFACE EXPLORATION AND TEST REPORT	ANVIL RANGE ROAD GRANULAR INVESTIGATION	BOREHOLE NO: 367-18
ENGINEERING-MAINTENANCE	KM 1.2 LHS	PROJECT NO: 091-260130-5908
BACKHOE: CAT 225	LOCATION: See Plan	ELEVATION: 0 m

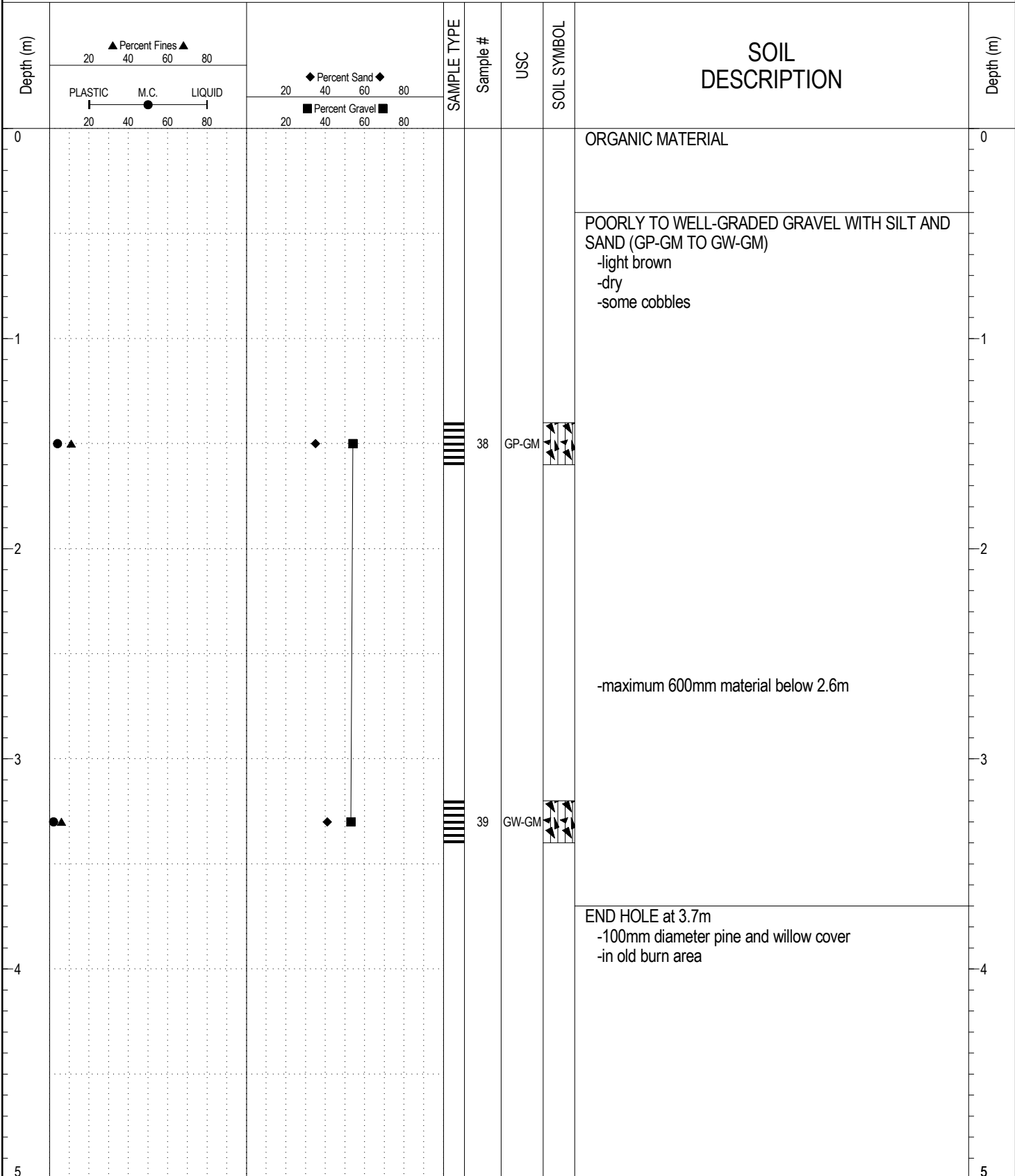
SAMPLE TYPE RETURN S.P.T. Auger BULK TUBE CORE



ESE IMPORT LOG GRAVEL 366-370.GPJ YTG.GDT 5/30/16

SUBSURFACE EXPLORATION AND TEST REPORT	ANVIL RANGE ROAD GRANULAR INVESTIGATION	BOREHOLE NO: 367-19
ENGINEERING-MAINTENANCE	KM 1.2 LHS	PROJECT NO: 091-260130-5908
BACKHOE: CAT 225	LOCATION: See Plan	ELEVATION: 0 m

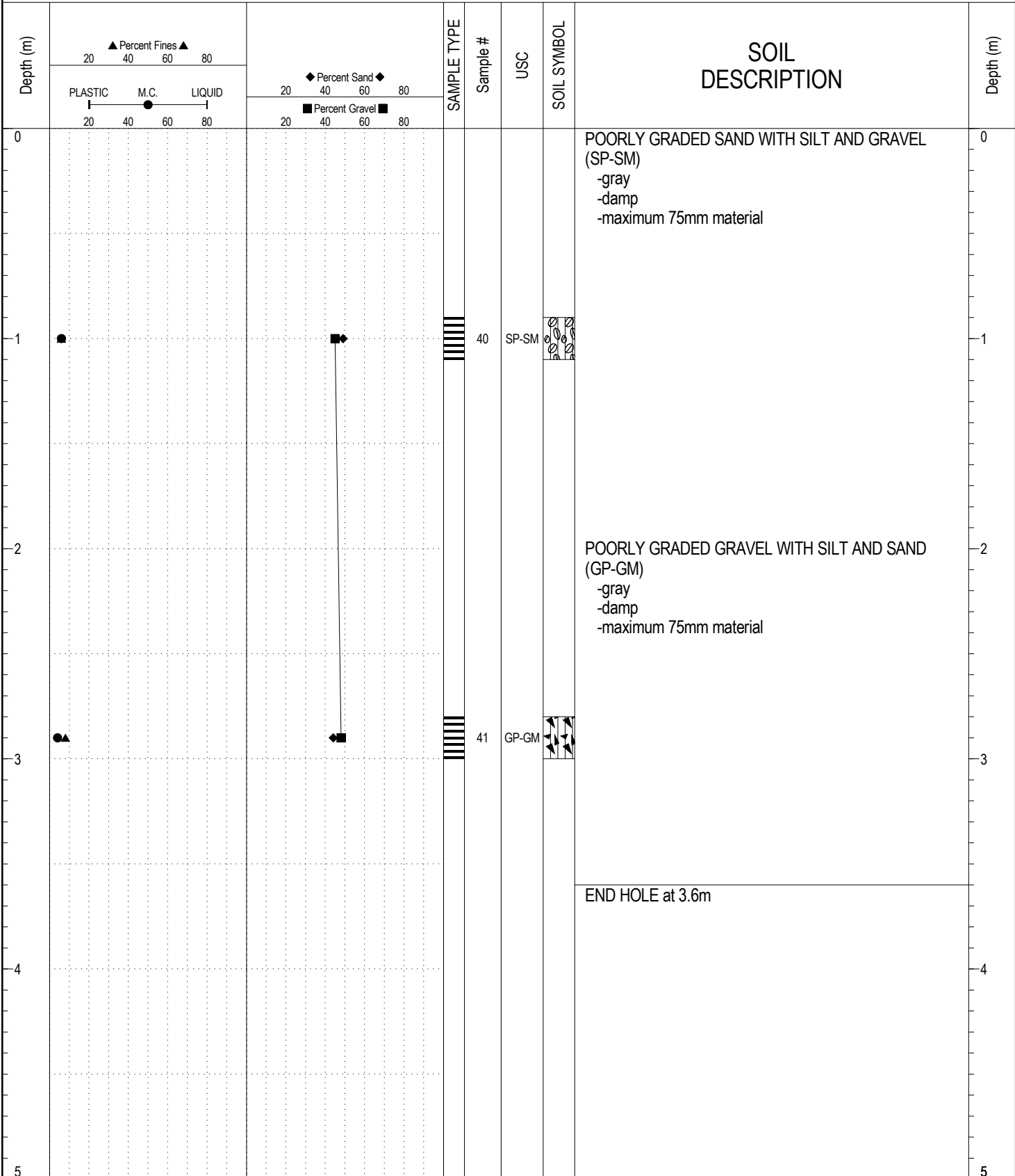
SAMPLE TYPE RETURN S.P.T. Auger BULK TUBE CORE



ESE IMPORT LOG GRAVEL 366-370.GPJ YTG.GDT 5/30/16

SUBSURFACE EXPLORATION AND TEST REPORT	ANVIL RANGE ROAD GRANULAR INVESTIGATION	BOREHOLE NO: 367-20
ENGINEERING-MAINTENANCE	KM 1.2 LHS	PROJECT NO: 091-260130-5908
BACKHOE: CAT 225	LOCATION: See Plan	ELEVATION: 0 m

SAMPLE TYPE RETURN S.P.T. Auger BULK TUBE CORE



ESE IMPORT LOG GRAVEL 366-370.GPJ YTG.GDT 5/30/16