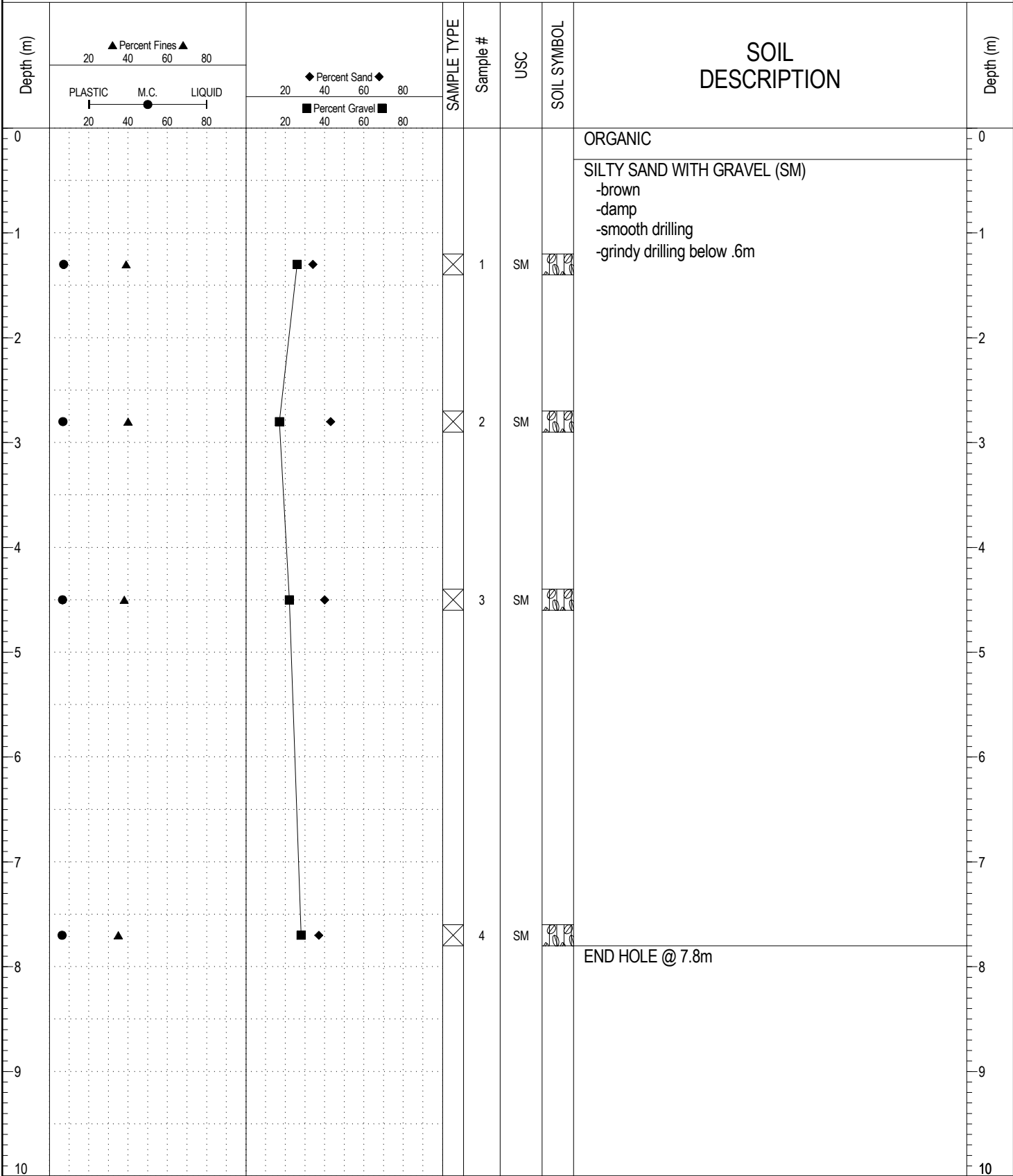


SUBSURFACE EXPLORATION AND TEST REPORT	CAMPBELL HIGHWAY RE-CONSTRUCTION	BOREHOLE NO: 535-1201
ENGINEERING CAPITAL	KM 370-410	PROJECT NO: 092-202101-0302
C.M.E. 75 6" AUGER	LOCATION: 409+500 15M RT	ELEVATION:

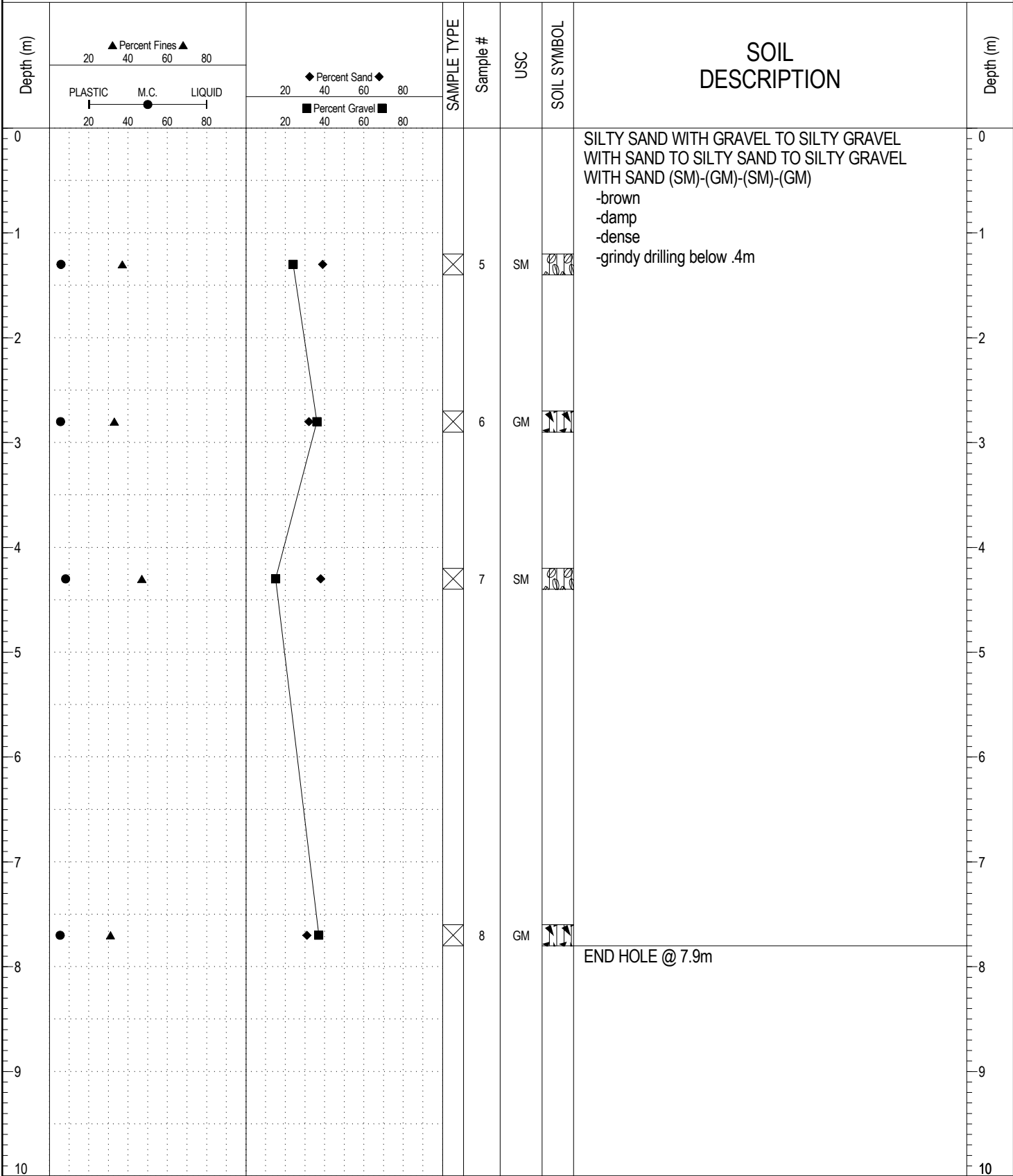
SAMPLE TYPE RETURN S.P.T. Auger BULK TUBE CORE



ESE IMPORT LOG GRAVEL 531-535.GPJ YTG.GDT 4/5/18

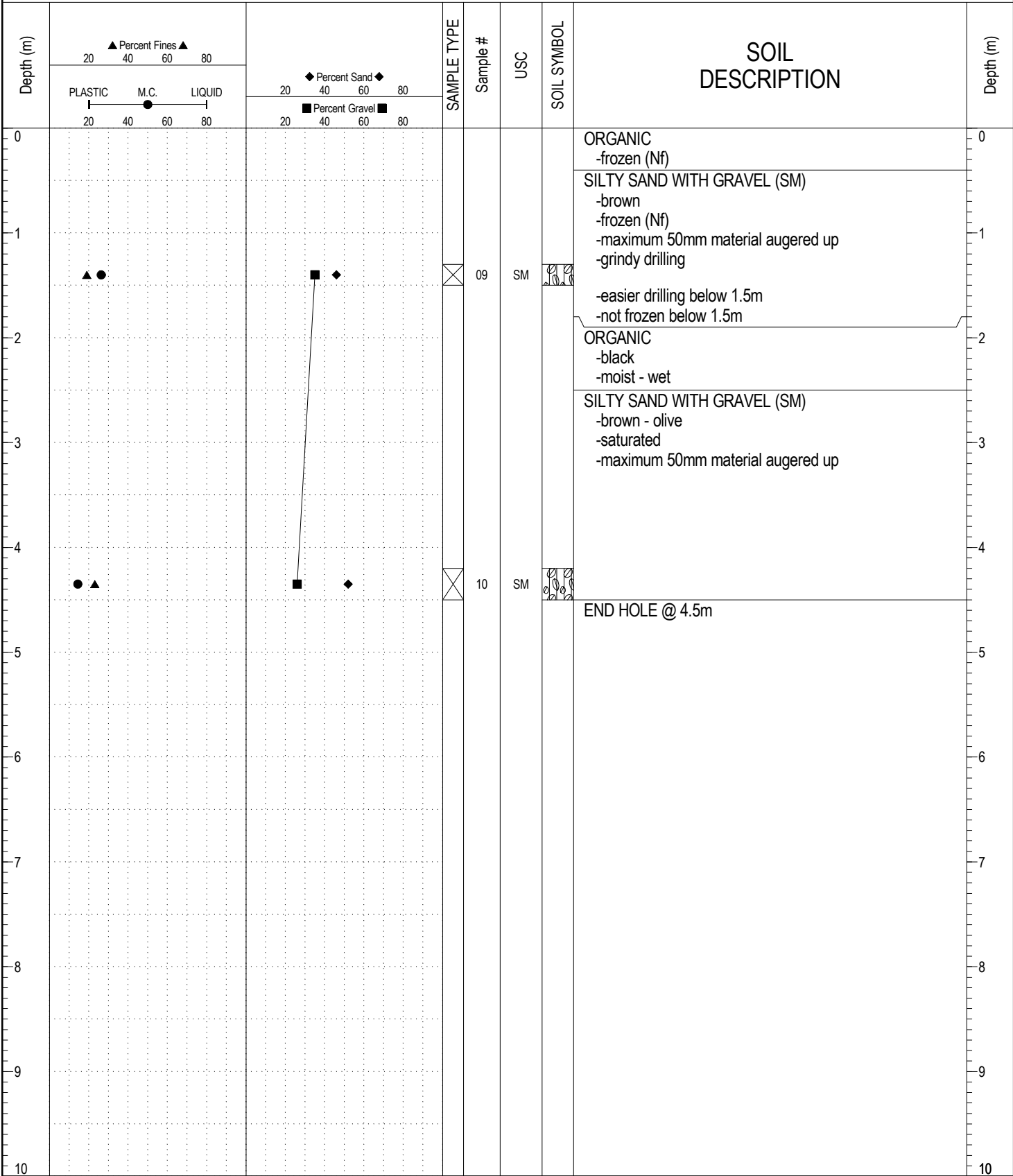
SUBSURFACE EXPLORATION AND TEST REPORT	CAMPBELL HIGHWAY RE-CONSTRUCTION	BOREHOLE NO: 535-1202
ENGINEERING CAPITAL	KM 370-410	PROJECT NO: 092-202101-0302
C.M.E. 75 6" AUGER	LOCATION: 409+400 15M RT	ELEVATION:

SAMPLE TYPE RETURN S.P.T. Auger BULK TUBE CORE



ESE IMPORT LOG GRAVEL 531-535.GPJ YTG.GDT 4/5/18

SAMPLE TYPE RETURN S.P.T. Auger BULK TUBE CORE



ESE IMPORT LOG GRAVEL 531-535.GPJ YTG.GDT 4/5/18

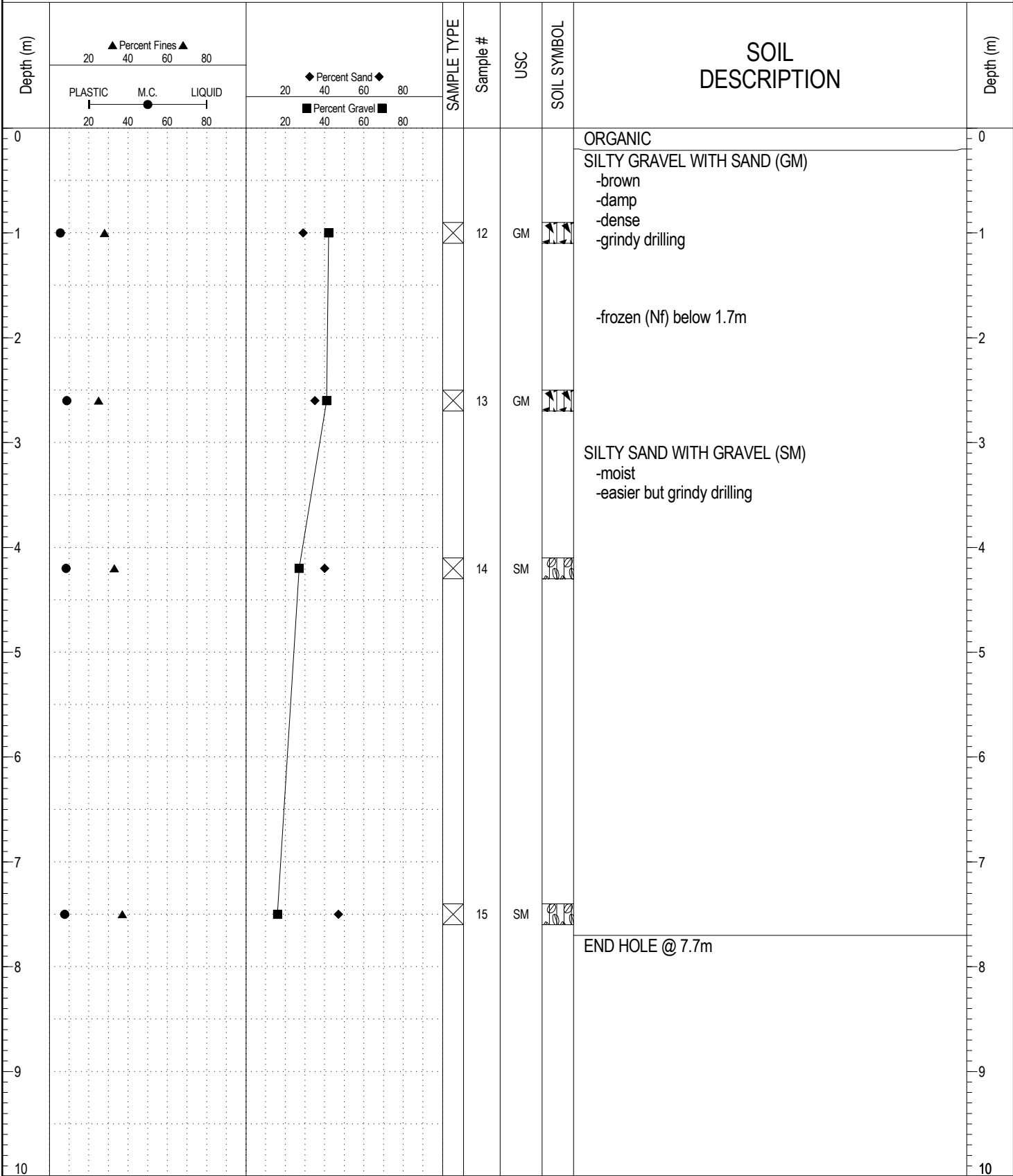
SUBSURFACE EXPLORATION AND TEST REPORT	CAMPBELL HIGHWAY RE-CONSTRUCTION	BOREHOLE NO: 535-1204
ENGINEERING CAPITAL	KM 370-410	PROJECT NO: 092-202101-0302
C.M.E. 75 6" AUGER	LOCATION: 407+700 8M RT	ELEVATION:

SAMPLE TYPE RETURN S.P.T. Auger BULK TUBE CORE

Depth (m)	▲ Percent Fines ▲		◆ Percent Sand ◆		SAMPLE TYPE	Sample #	USC	SOIL SYMBOL	SOIL DESCRIPTION	Depth (m)
	20	40	60	80						
0									ORGANIC -black -frozen(Nb)	0
1										1
2	●	▲			⊗	11	SM		SILTY SAND WITH GRAVEL (SM) -brown -frozen (Nf) -maximum 50mm material augered up	2
3									END HOLE @ 2.9m	3
4										4
5										5
6										6
7										7
8										8
9										9
10										10

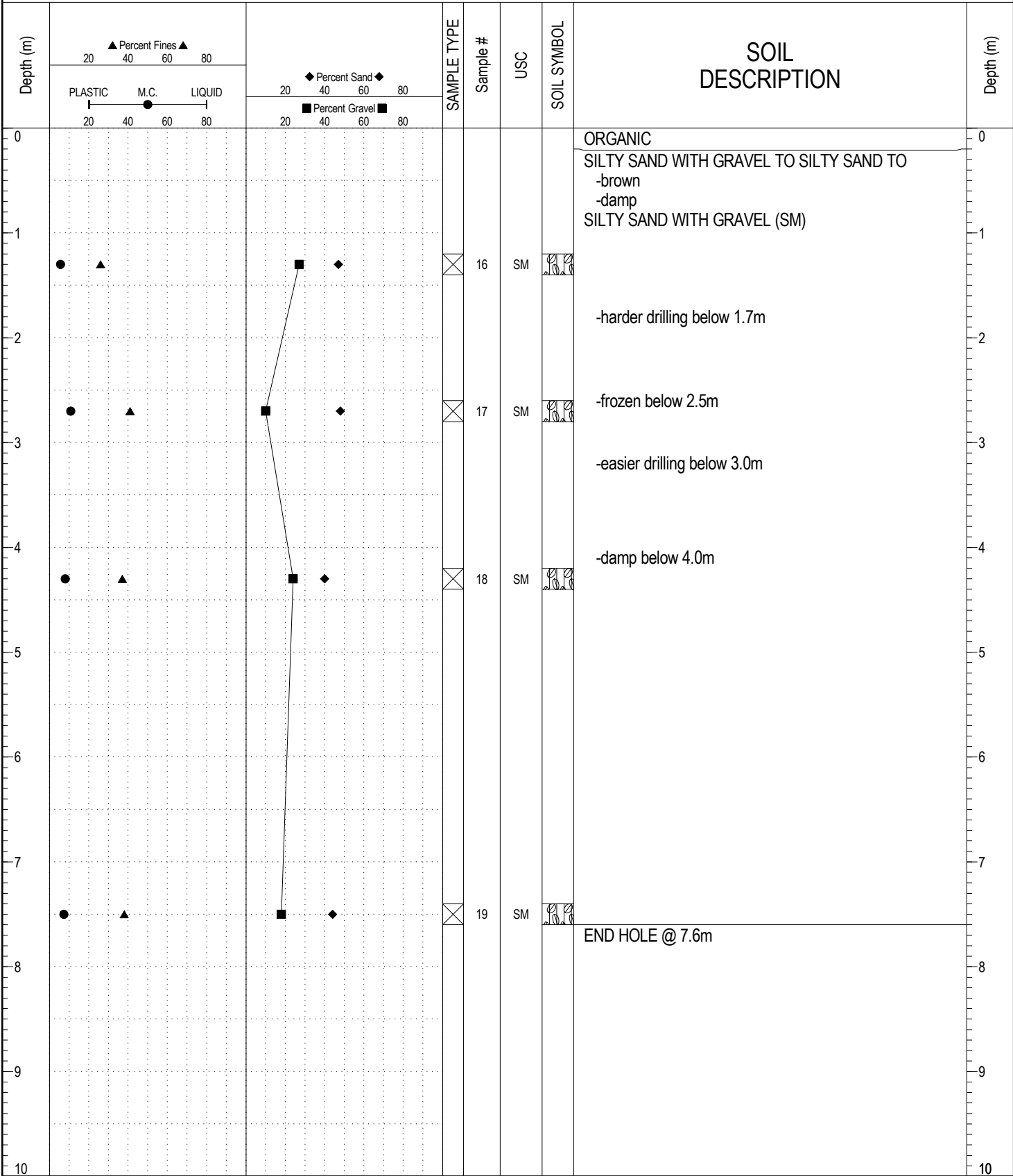
ESE IMPORT LOG GRAVEL 531-535.GPJ YTG.GDT 4/5/18

SAMPLE TYPE RETURN S.P.T. Auger BULK TUBE CORE

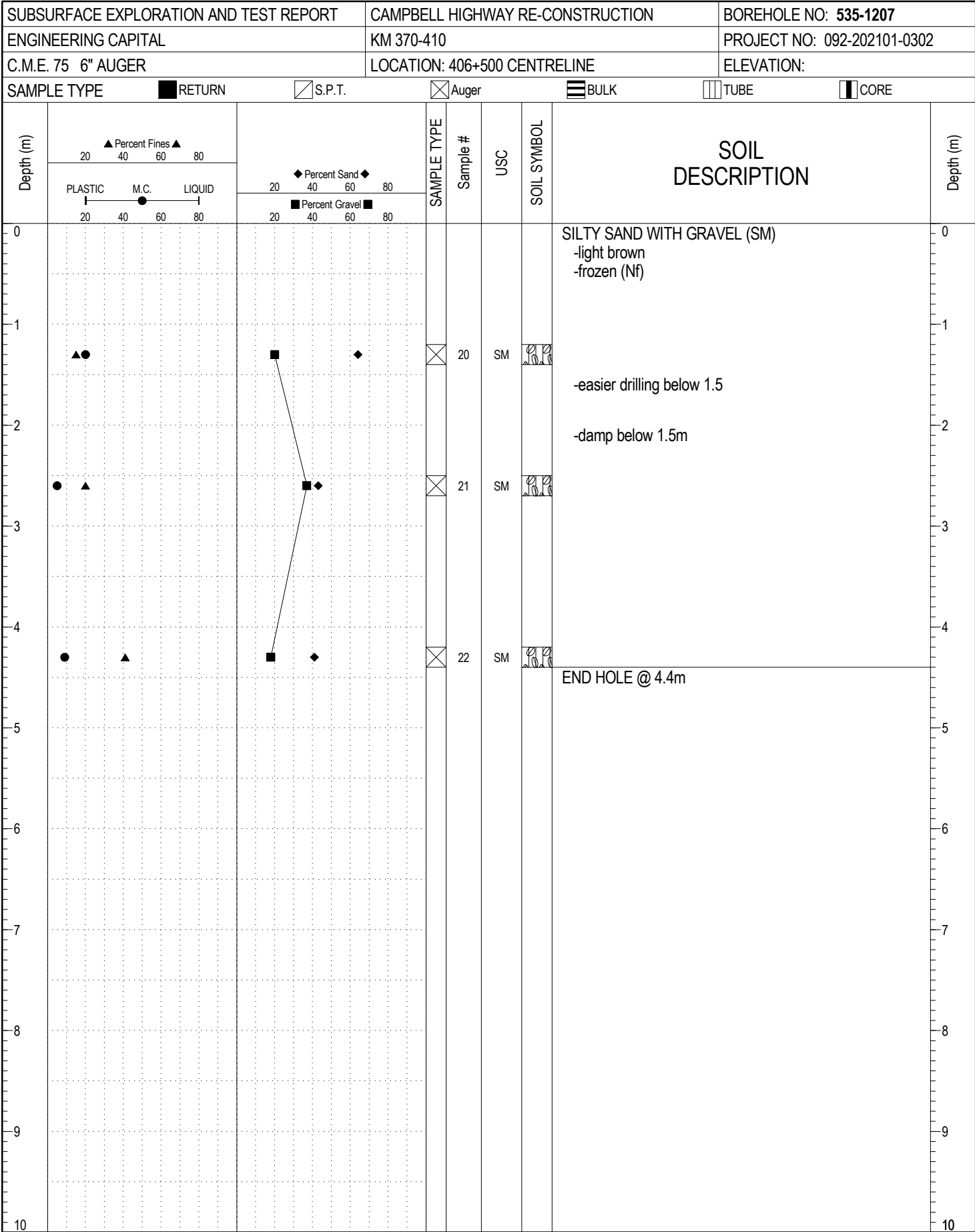


ESE IMPORT LOG GRAVEL 531-535.GPJ YTG.GDT 4/5/18

SAMPLE TYPE RETURN S.P.T. Auger BULK TUBE CORE



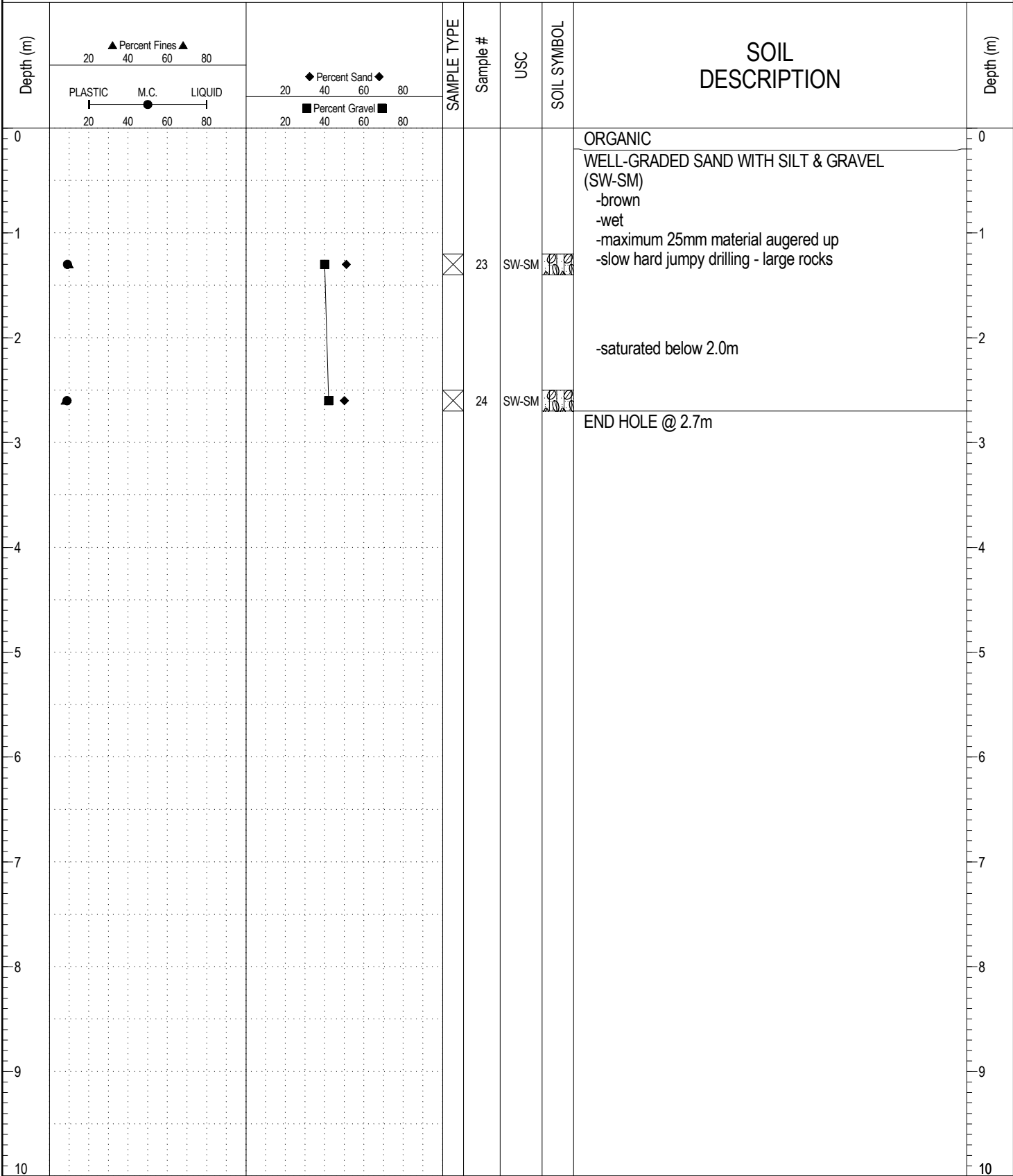
ESE IMPORT LOG GRAVEL 531-535.GPJ YTG.GDT 4/5/18



ESE IMPORT LOG GRAVEL 531-535.GPJ YTG.GDT 4/5/18

SUBSURFACE EXPLORATION AND TEST REPORT	CAMPBELL HIGHWAY RE-CONSTRUCTION	BOREHOLE NO: 535-1208
ENGINEERING CAPITAL	KM 370-410	PROJECT NO: 092-202101-0302
C.M.E. 75 6" AUGER	LOCATION: 406+125 9M LT	ELEVATION:

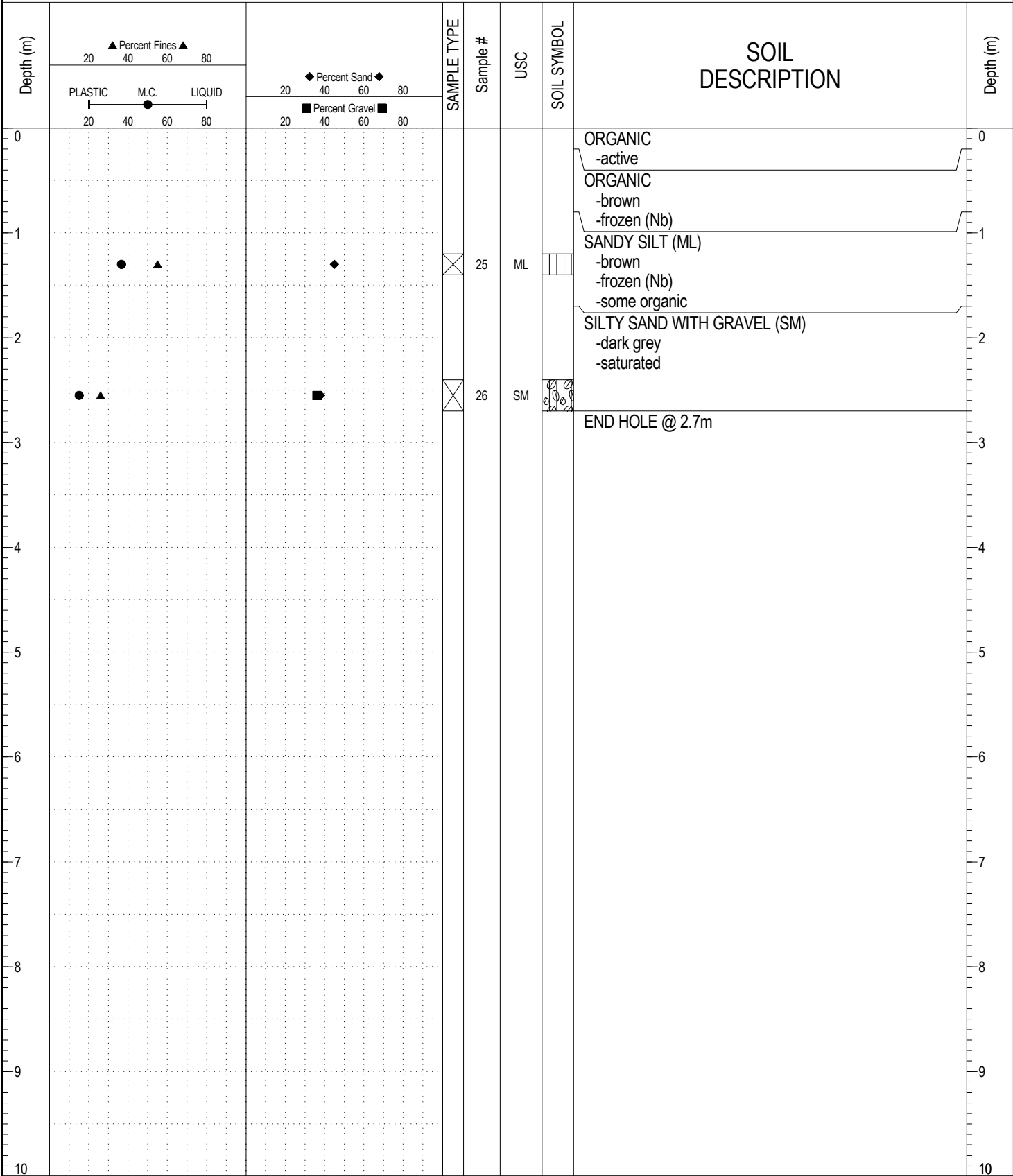
SAMPLE TYPE RETURN S.P.T. Auger BULK TUBE CORE



ESE IMPORT LOG GRAVEL 531-535.GPJ YTG.GDT 4/5/18

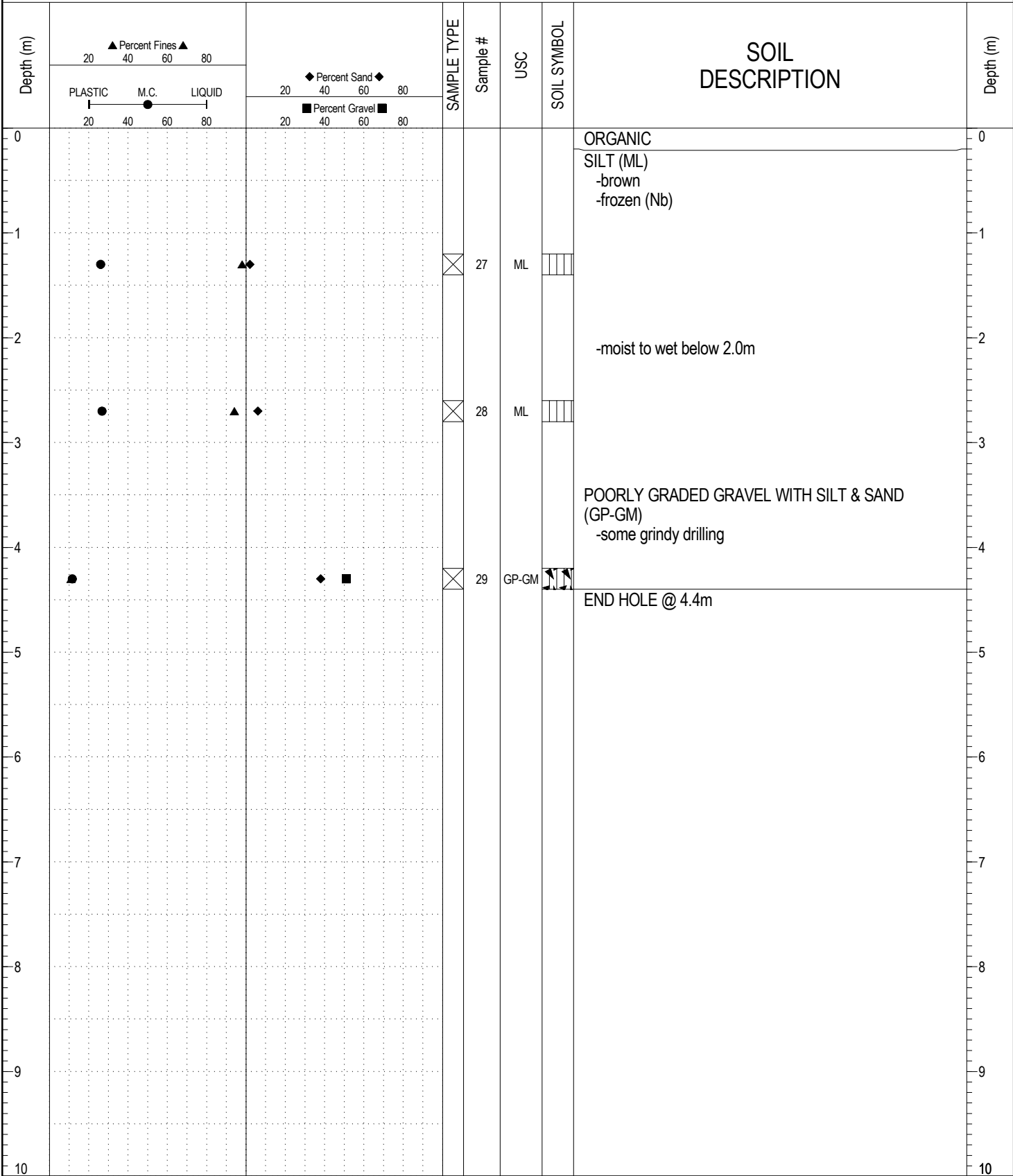
SUBSURFACE EXPLORATION AND TEST REPORT	CAMPBELL HIGHWAY RE-CONSTRUCTION	BOREHOLE NO: 535-1209
ENGINEERING CAPITAL	KM 370-410	PROJECT NO: 092-202101-0302
C.M.E. 75 6" AUGER	LOCATION: 406+125 7M RT	ELEVATION:

SAMPLE TYPE RETURN S.P.T. Auger BULK TUBE CORE



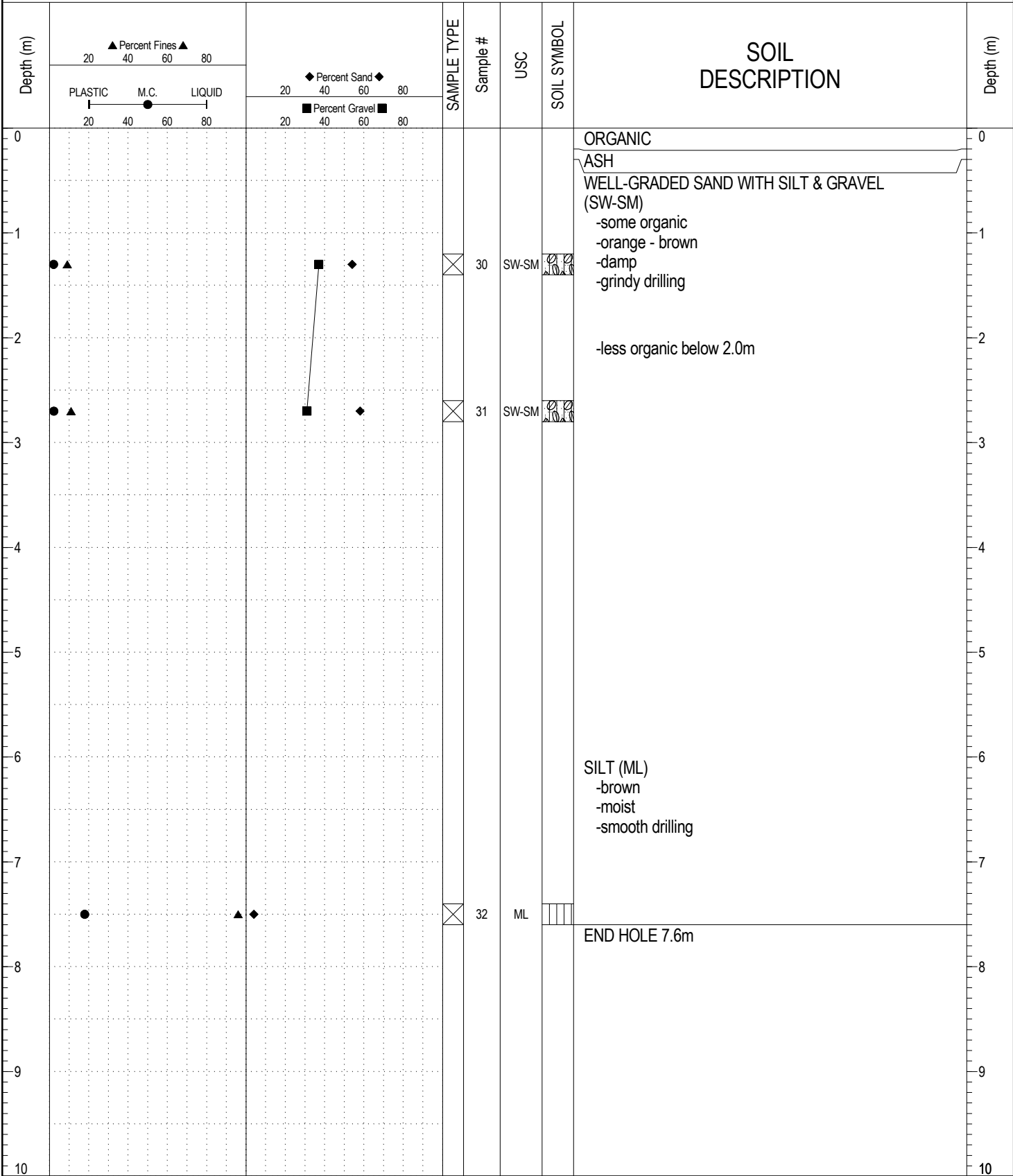
ESE IMPORT LOG GRAVEL 531-535.GPJ YTG.GDT 4/5/18

SAMPLE TYPE RETURN S.P.T. Auger BULK TUBE CORE



ESE IMPORT LOG GRAVEL 531-535.GPJ YTG.GDT 4/5/18

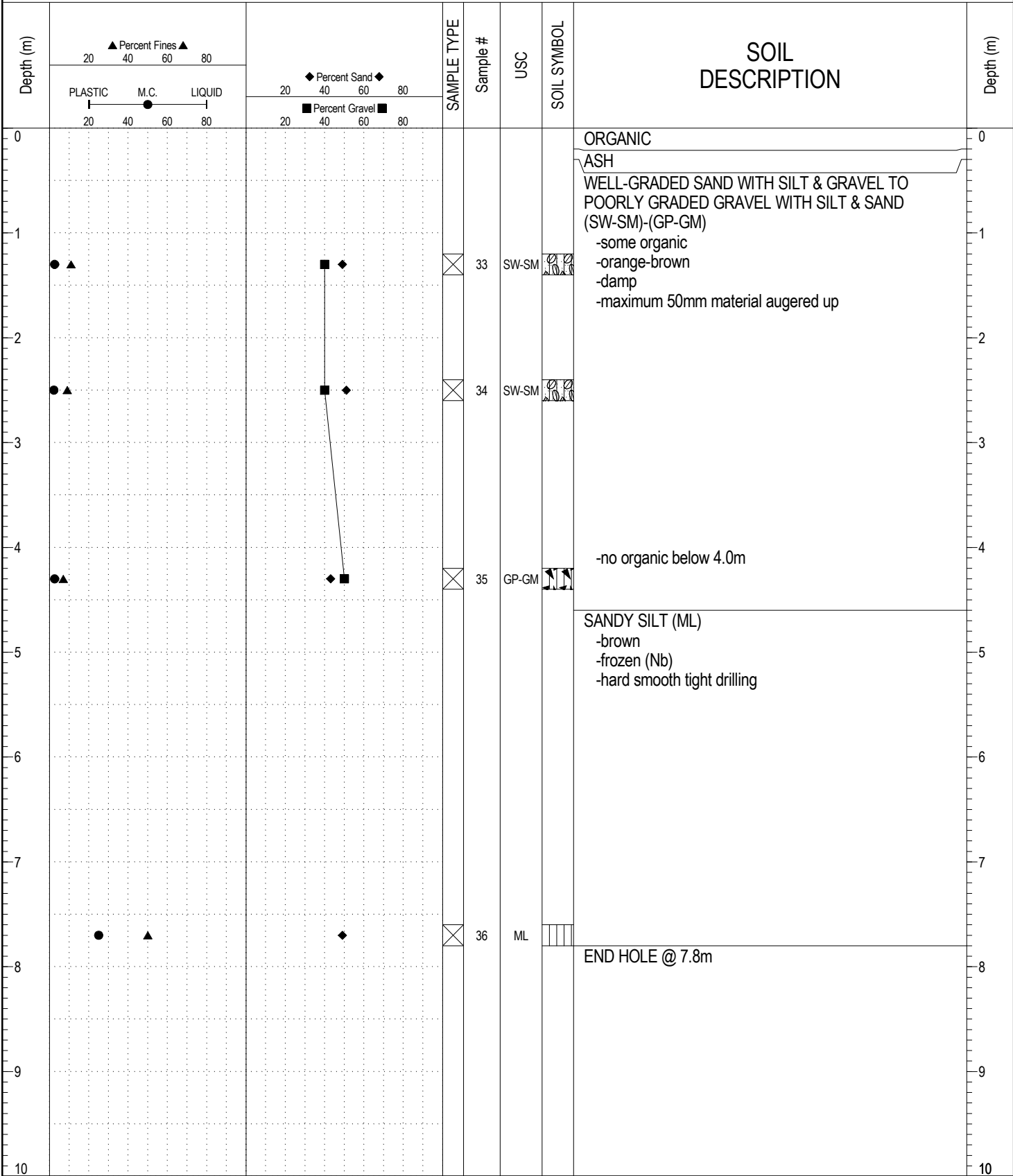
SAMPLE TYPE RETURN S.P.T. Auger BULK TUBE CORE



ESE IMPORT LOG GRAVEL 531-535.GPJ YTG.GDT 4/5/18

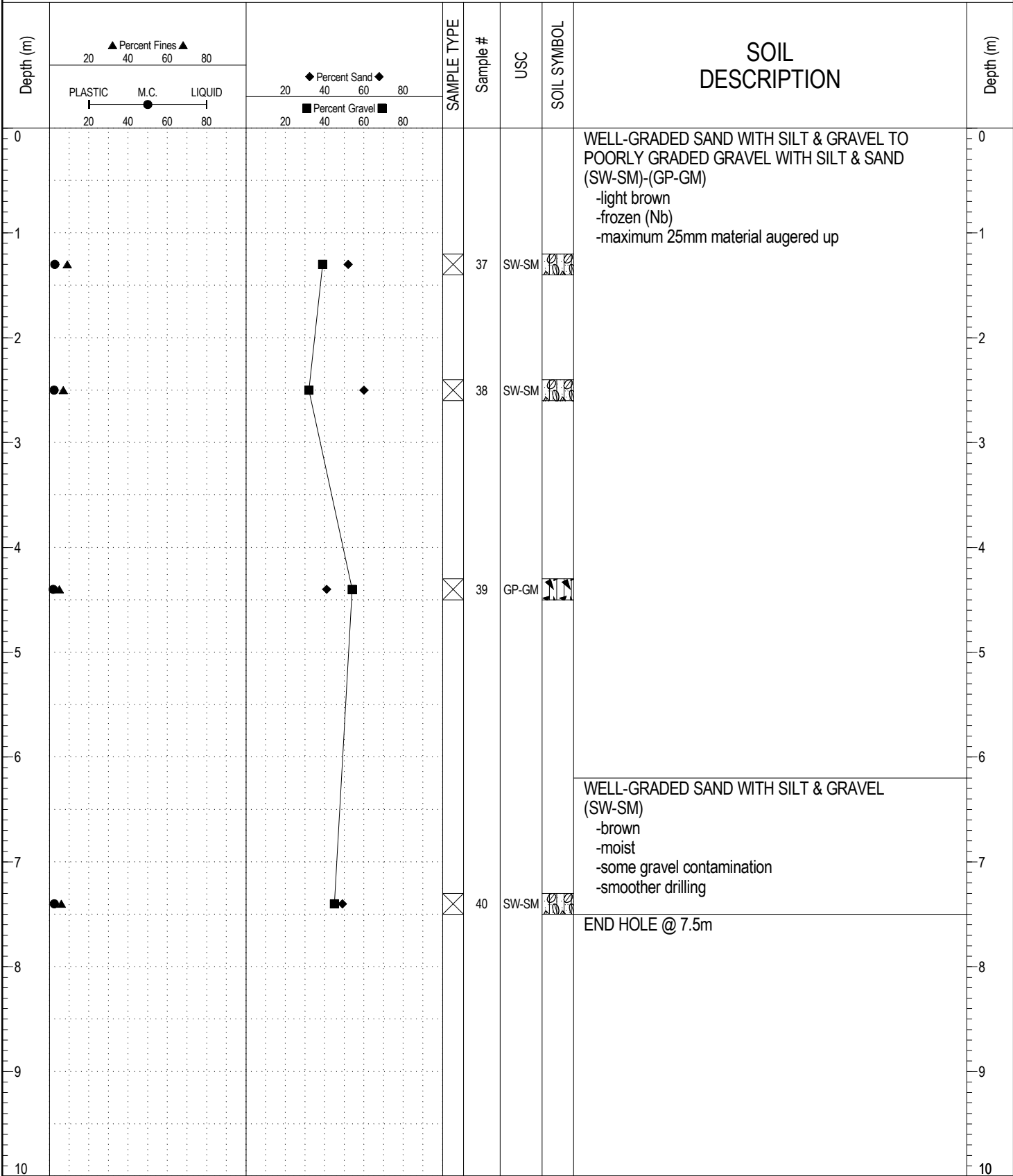
SUBSURFACE EXPLORATION AND TEST REPORT	CAMPBELL HIGHWAY RE-CONSTRUCTION	BOREHOLE NO: 535-1212
ENGINEERING CAPITAL	KM 370-410	PROJECT NO: 092-202101-0302
C.M.E. 75 6" AUGER	LOCATION: 405+875 12M LT	ELEVATION:

SAMPLE TYPE RETURN S.P.T. Auger BULK TUBE CORE



ESE IMPORT LOG GRAVEL 531-535.GPJ YTG.GDT 4/5/18

SAMPLE TYPE RETURN S.P.T. Auger BULK TUBE CORE



ESE IMPORT LOG GRAVEL 531-535.GPJ YTG.GDT 4/5/18