






LEGEND

-  Edge of clearing
-  Existing trails
-  Approximate test hole location



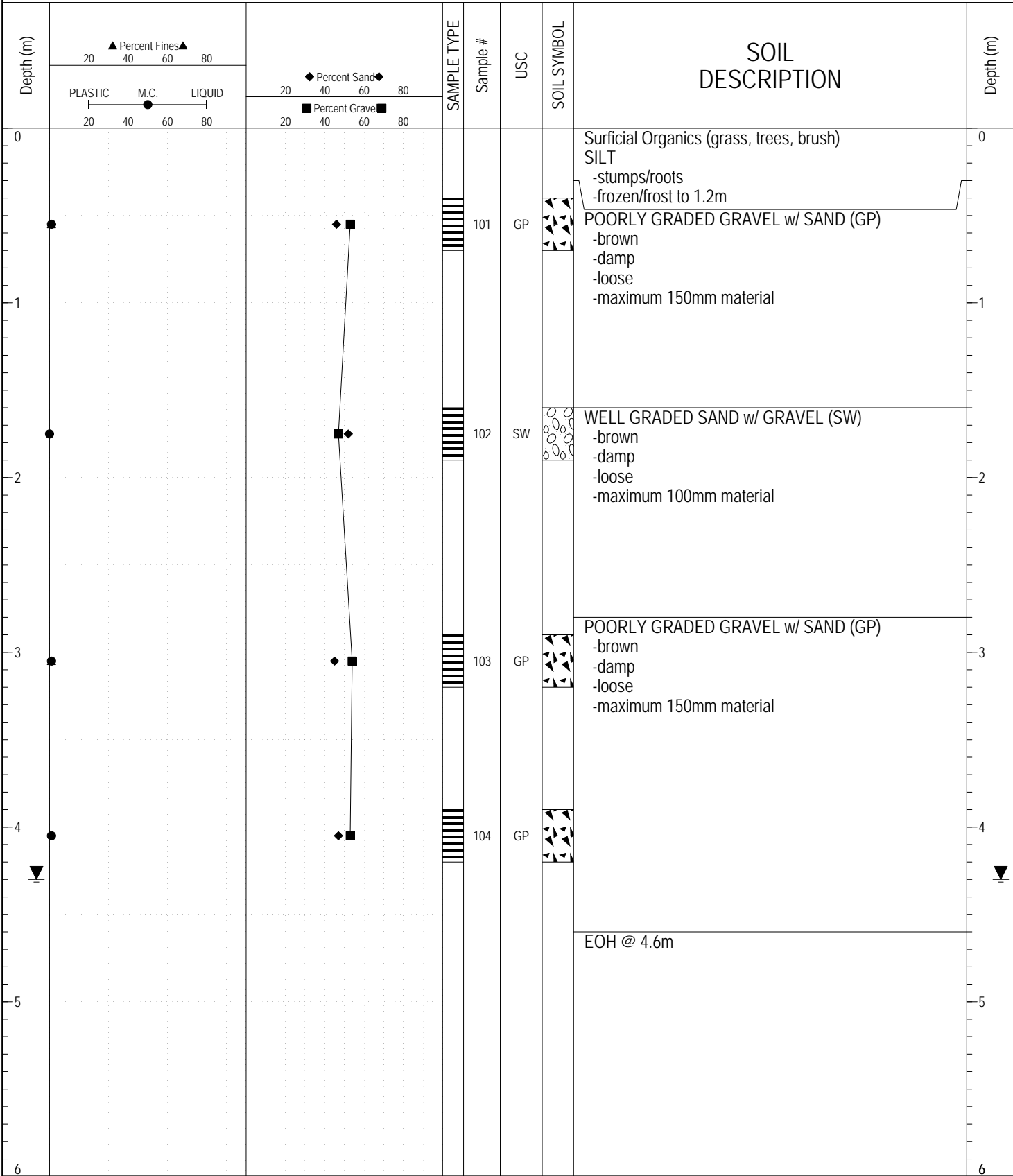
Highways and Public Works

Transportation Engineering Branch

SITE PLAN
 GRANULAR PIT
 km 10.1 LHS
 (Watson Lake Airport)
 CAMPBELL HWY. YUKON

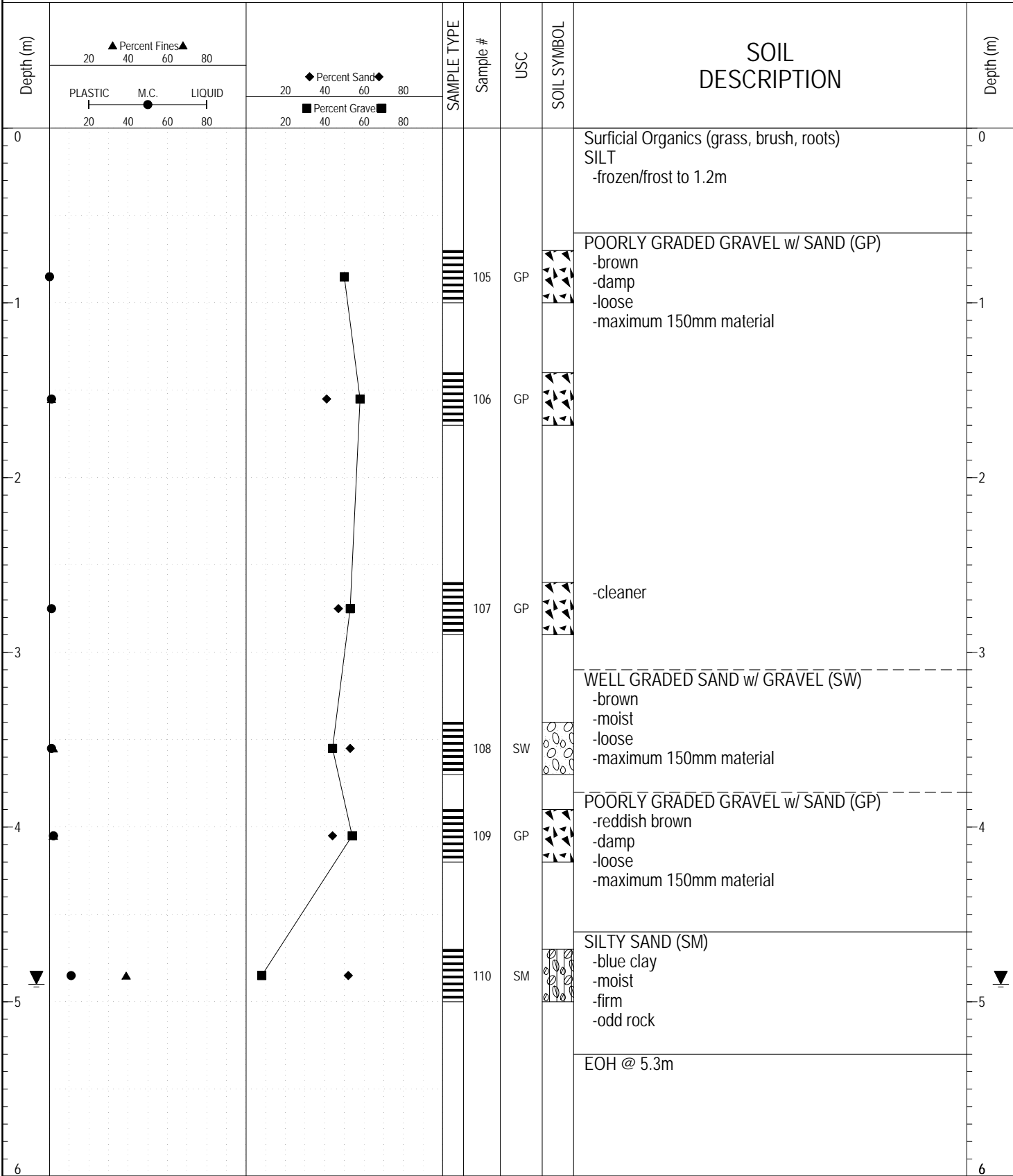
pit file: 1058 A-49
revision: 2008-Geotech
drawn: JJM
date: 2008-04-04
scale: 1: 15000
drwg: 105a-49S

SAMPLE TYPE RETURN S.P.T. Auger BULK TUBE CORE



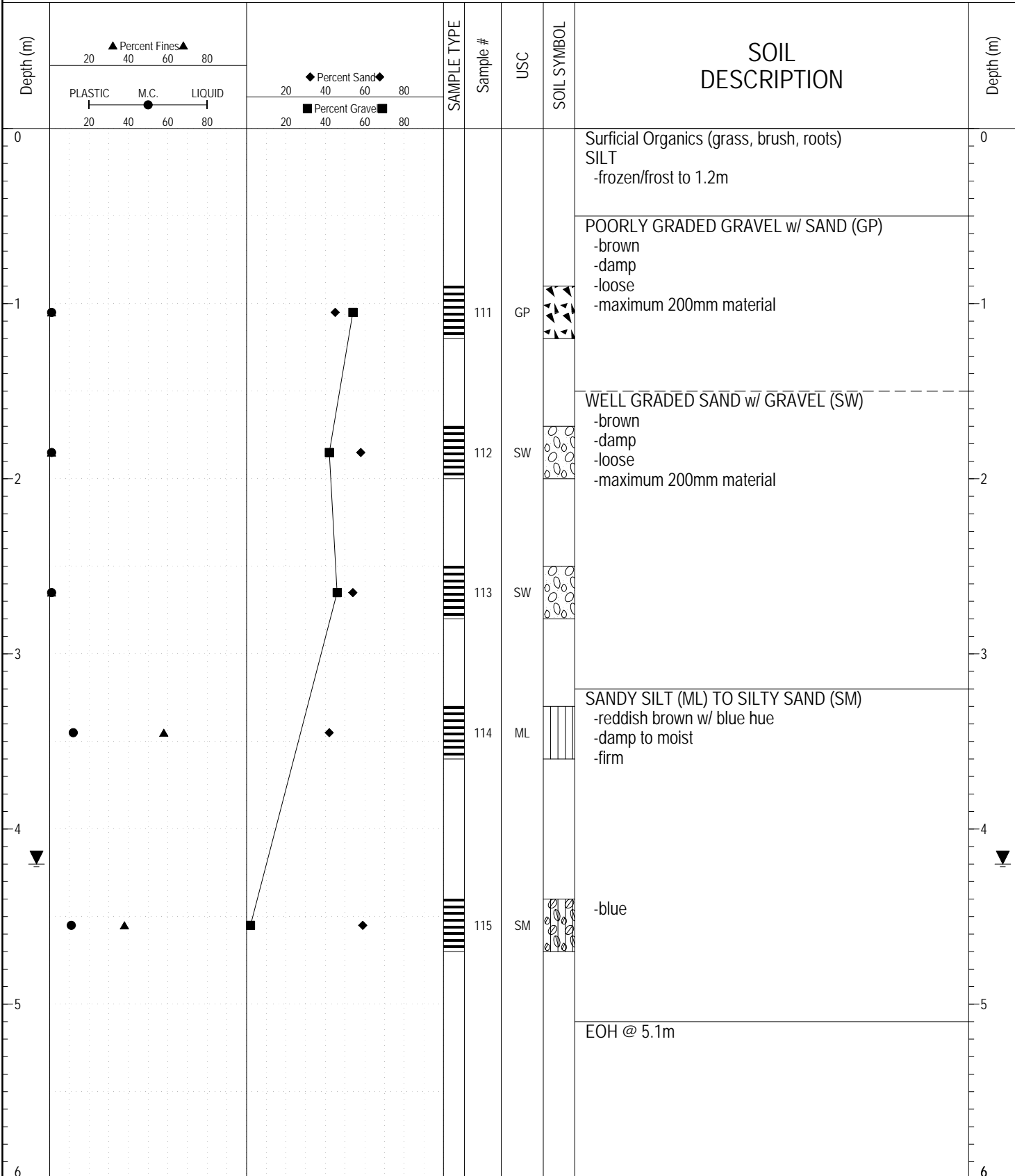
GEOTECH GRAVEL 726.GPJ YTG.GDT 3/3/17

SAMPLE TYPE RETURN S.P.T. Auger BULK TUBE CORE



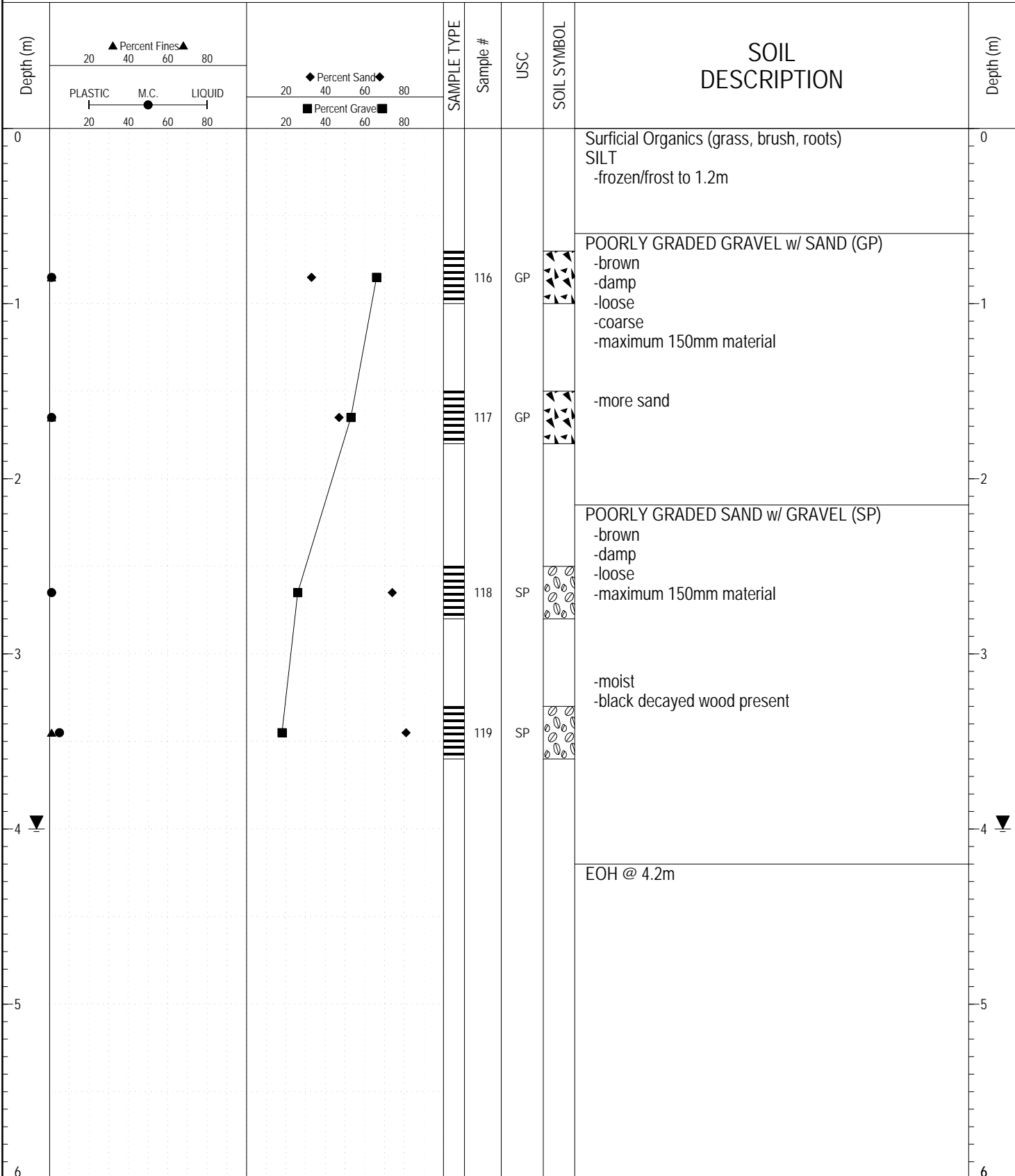
GEOTECH GRAVEL 726.GPJ YTG.GDT 3/3/17

SAMPLE TYPE RETURN S.P.T. Auger BULK TUBE CORE



GEOTECH GRAVEL 726.GPJ YTG.GDT 3/3/17

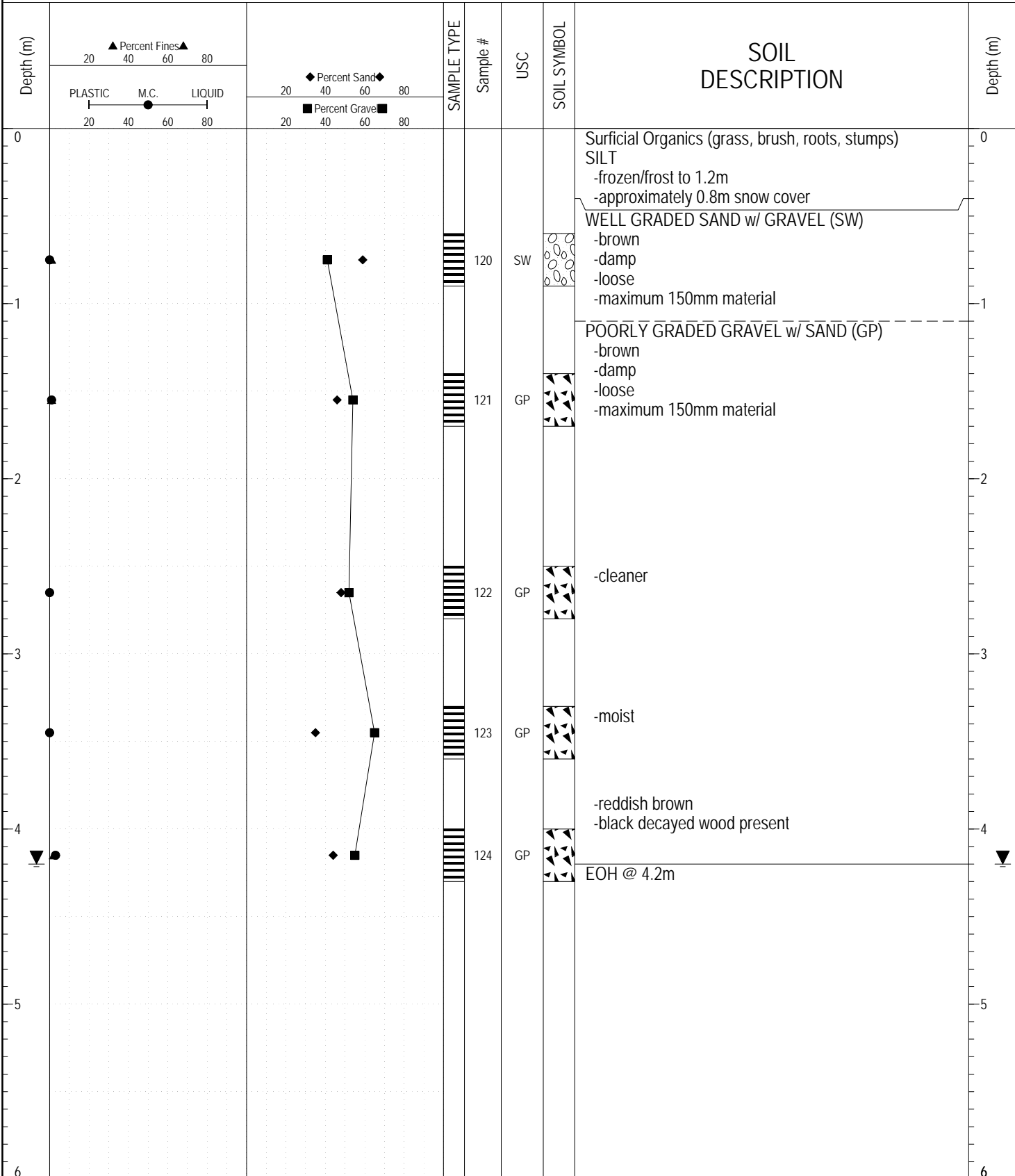
SAMPLE TYPE RETURN S.P.T. Auger BULK TUBE CORE



GEOTECH GRAVEL 726.GPJ YTG.GDT 3/3/17

SUBSURFACE EXPLORATION AND TEST REPORT		Watson Lake Airport Geotechnical Investigation	BOREHOLE NO: 726-3705
CLIENT: Transportation Engineering		Km 10.1 Campbell Highway Pit ID# 105 A-49	PROJECT NO: 552-202335-02-0665
Kobelco SK300 Excavator		LOCATION: SEE PLAN / GPS	ELEVATION:

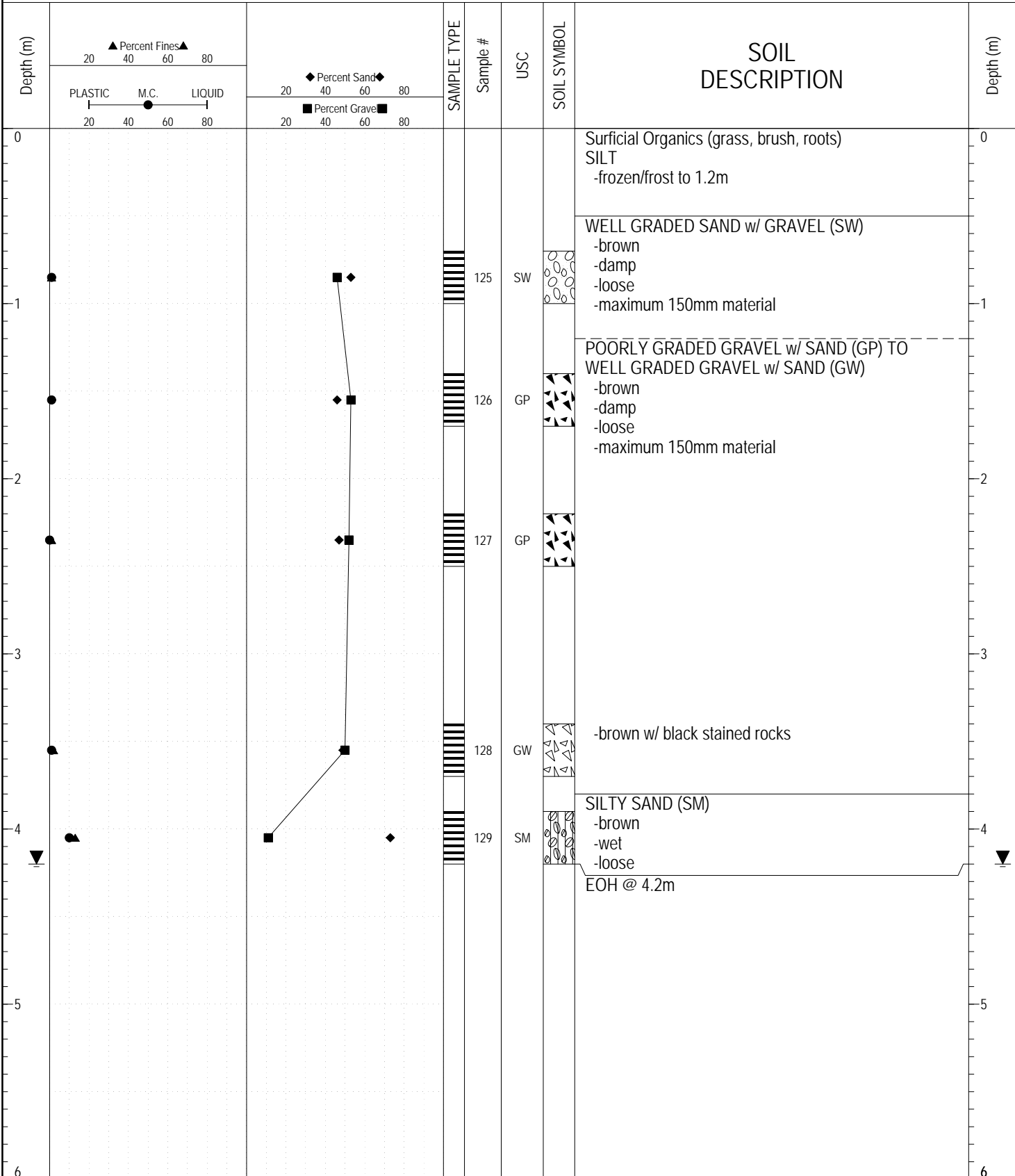
SAMPLE TYPE RETURN S.P.T. Auger BULK TUBE CORE



GEOTECH GRAVEL 726.GPJ YTG.GDT 3/3/17

SUBSURFACE EXPLORATION AND TEST REPORT		Watson Lake Airport Geotechnical Investigation	BOREHOLE NO: 726-3706
CLIENT: Transportation Engineering		Km 10.1 Campbell Highway Pit ID# 105 A-49	PROJECT NO: 552-202335-02-0665
Kobelco SK300 Excavator		LOCATION: SEE PLAN / GPS	ELEVATION:

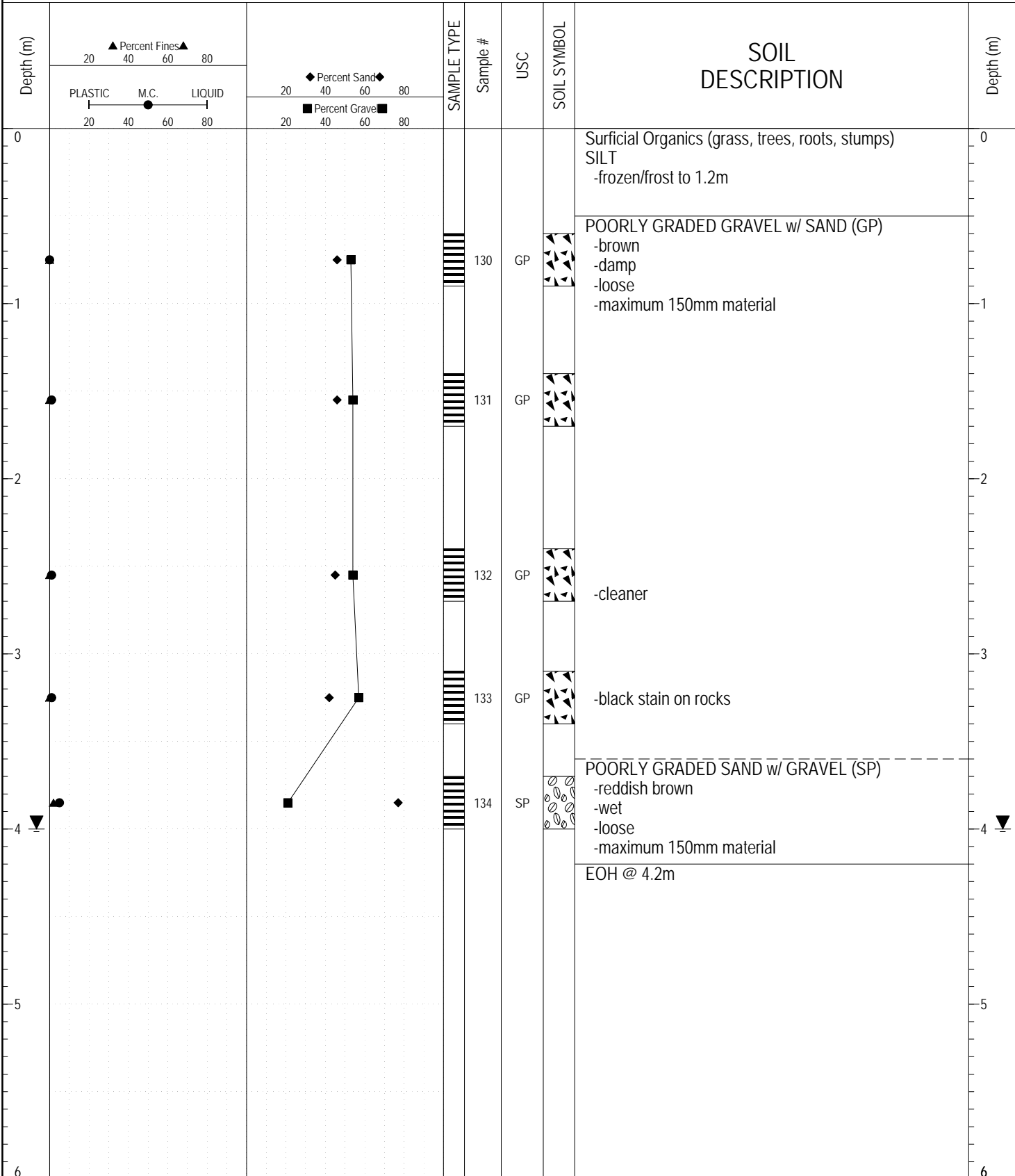
SAMPLE TYPE RETURN S.P.T. Auger BULK TUBE CORE



GEOTECH GRAVEL 726.GPJ YTG.GDT 3/3/17

SUBSURFACE EXPLORATION AND TEST REPORT		Watson Lake Airport Geotechnical Investigation	BOREHOLE NO: 726-3707
CLIENT: Transportation Engineering		Km 10.1 Campbell Highway Pit ID# 105 A-49	PROJECT NO: 552-202335-02-0665
Kobelco SK300 Excavator		LOCATION: SEE PLAN / GPS	ELEVATION:

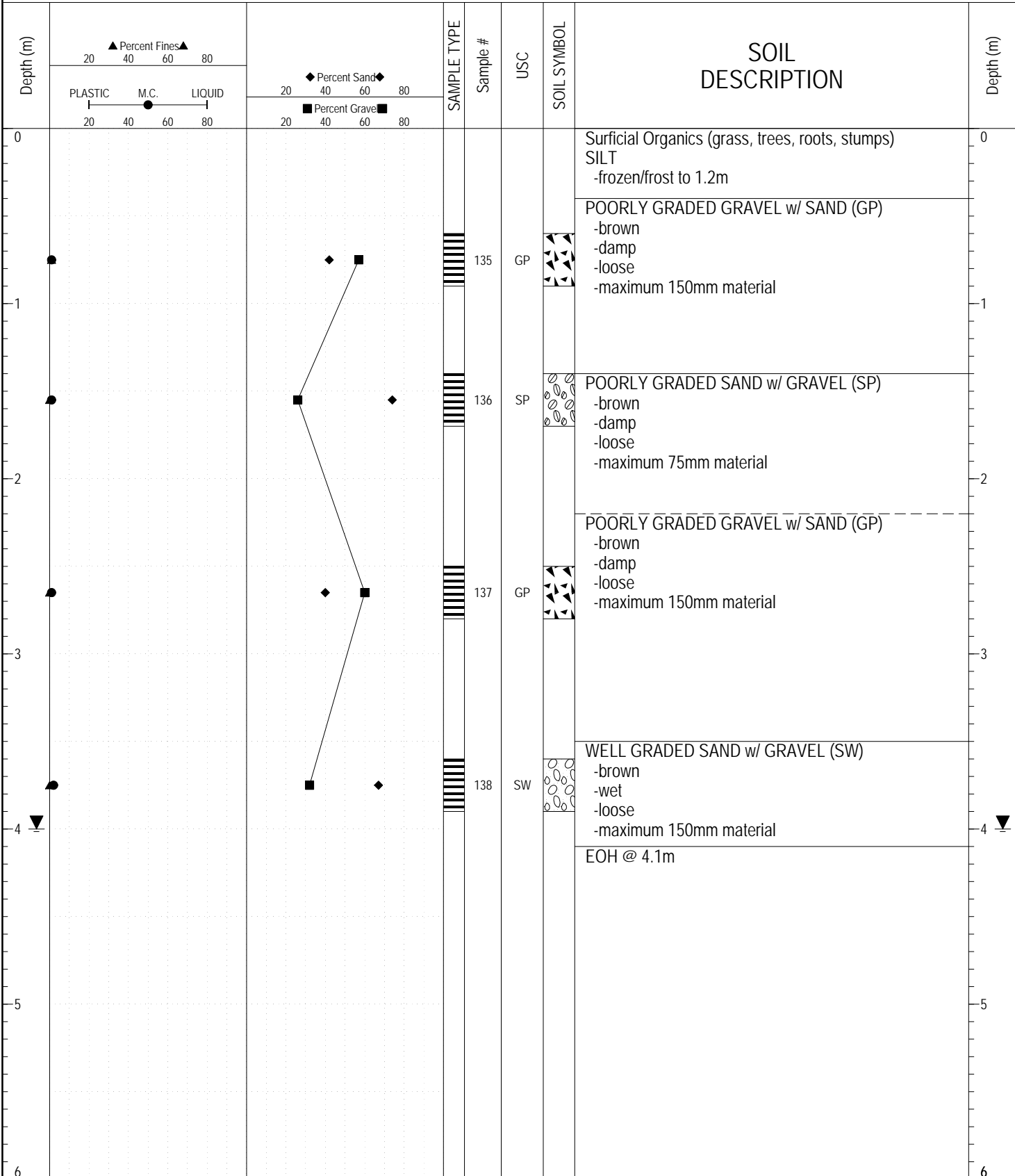
SAMPLE TYPE RETURN S.P.T. Auger BULK TUBE CORE



GEOTECH GRAVEL 726.GPJ YTG.GDT 3/3/17

SUBSURFACE EXPLORATION AND TEST REPORT		Watson Lake Airport Geotechnical Investigation	BOREHOLE NO: 726-3708
CLIENT: Transportation Engineering		Km 10.1 Campbell Highway Pit ID# 105 A-49	PROJECT NO: 552-202335-02-0665
Kobelco SK300 Excavator		LOCATION: SEE PLAN / GPS	ELEVATION:

SAMPLE TYPE RETURN S.P.T. Auger BULK TUBE CORE



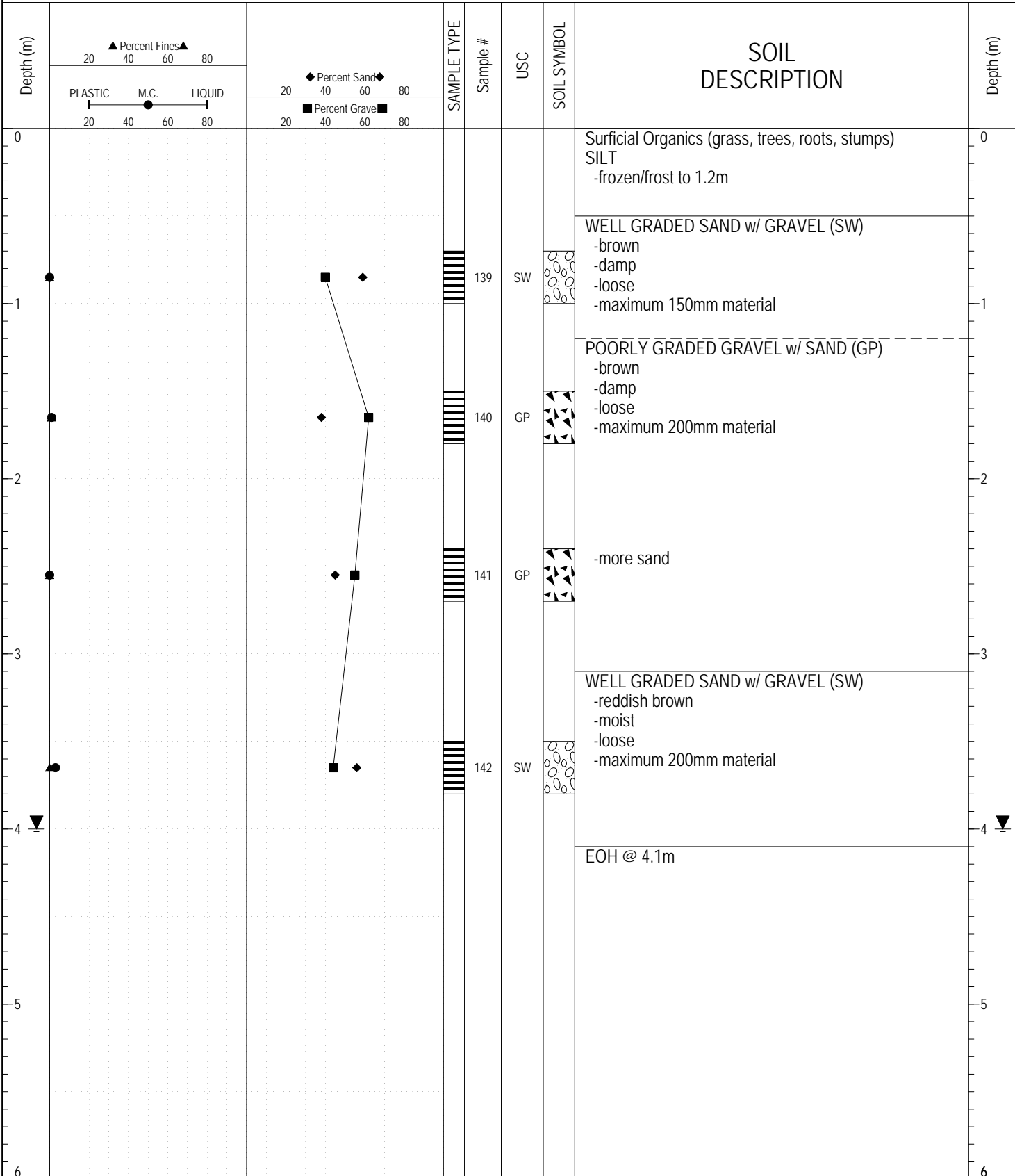
GEOTECH GRAVEL 726.GPJ YTG.GDT 3/3/17



Highways and Public Works
Transportation Engineering Branch

LOGGED BY: YTG-KJ	COMPLETION DEPTH: 4.10 m
REVIEWED BY:	COMPLETION DATE: 3/3/08
	Page 1 of 1

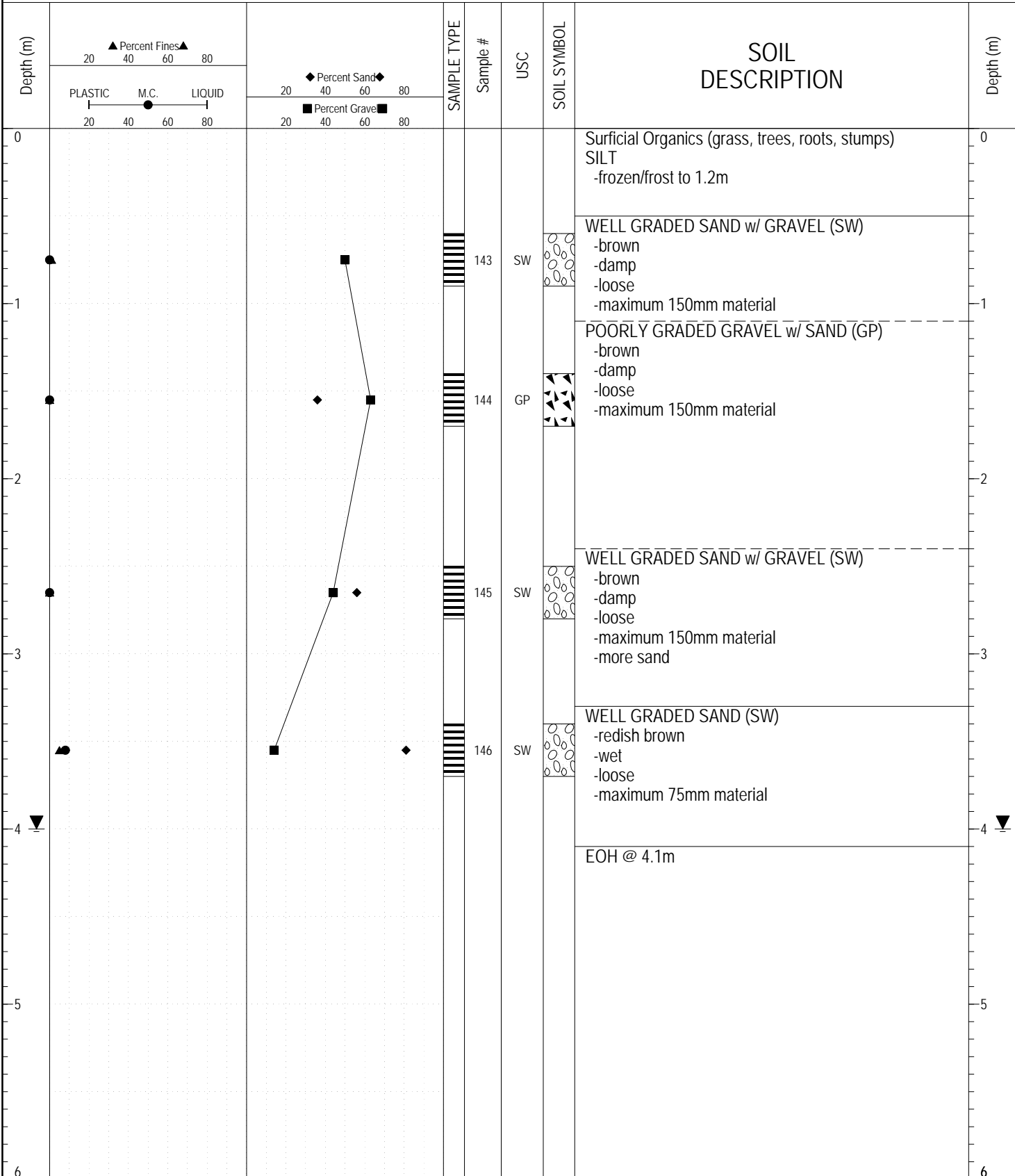
SAMPLE TYPE RETURN S.P.T. Auger BULK TUBE CORE



GEOTECH GRAVEL 726.GPJ YTG.GDT 3/3/17

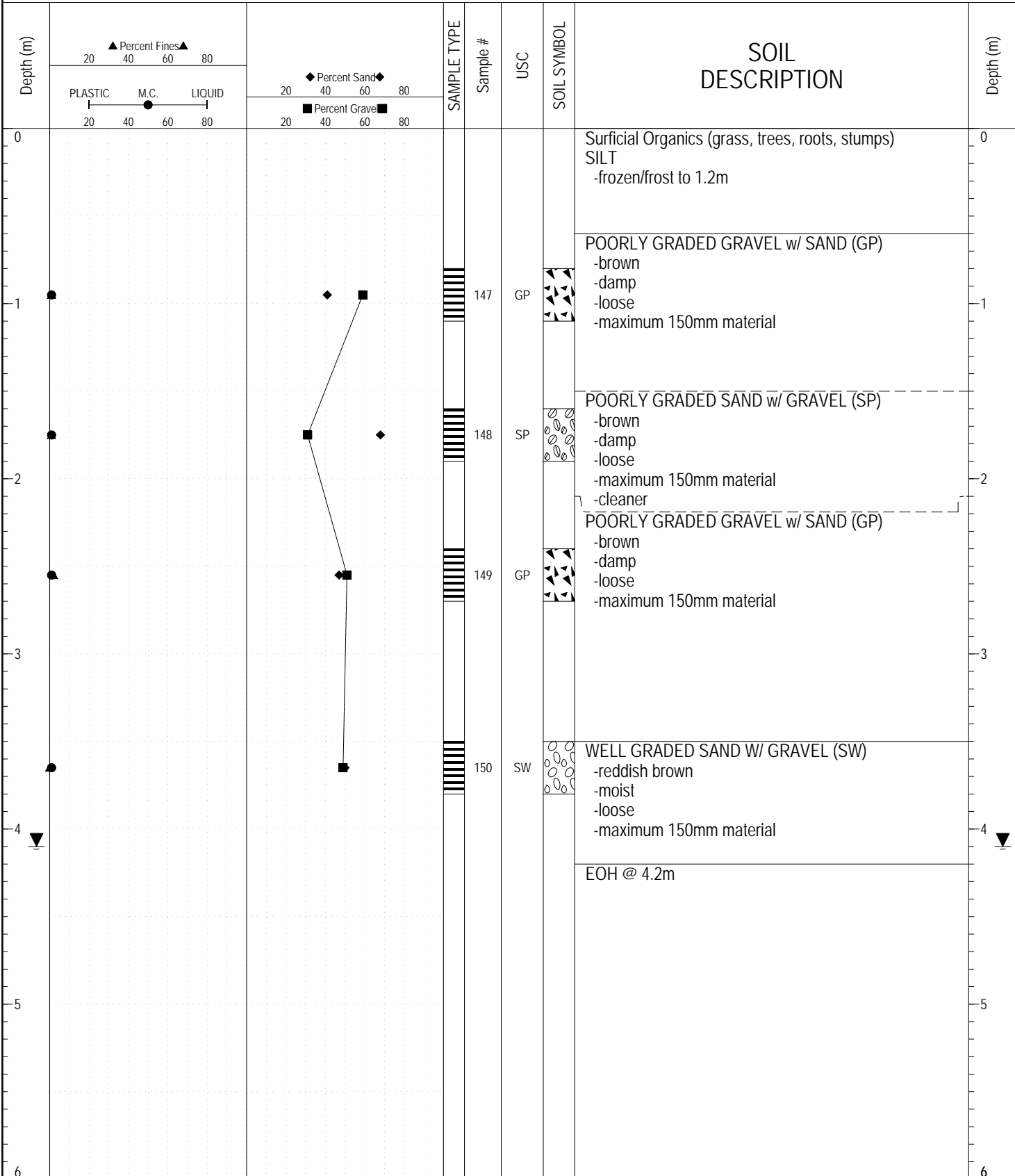
SUBSURFACE EXPLORATION AND TEST REPORT		Watson Lake Airport Geotechnical Investigation	BOREHOLE NO: 726-3710
CLIENT: Transportation Engineering		Km 10.1 Campbell Highway Pit ID# 105 A-49	PROJECT NO: 552-202335-02-0665
Kobelco SK300 Excavator		LOCATION: SEE PLAN / GPS	ELEVATION:

SAMPLE TYPE RETURN S.P.T. Auger BULK TUBE CORE



GEOTECH GRAVEL 726.GPJ YTG.GDT 3/3/17

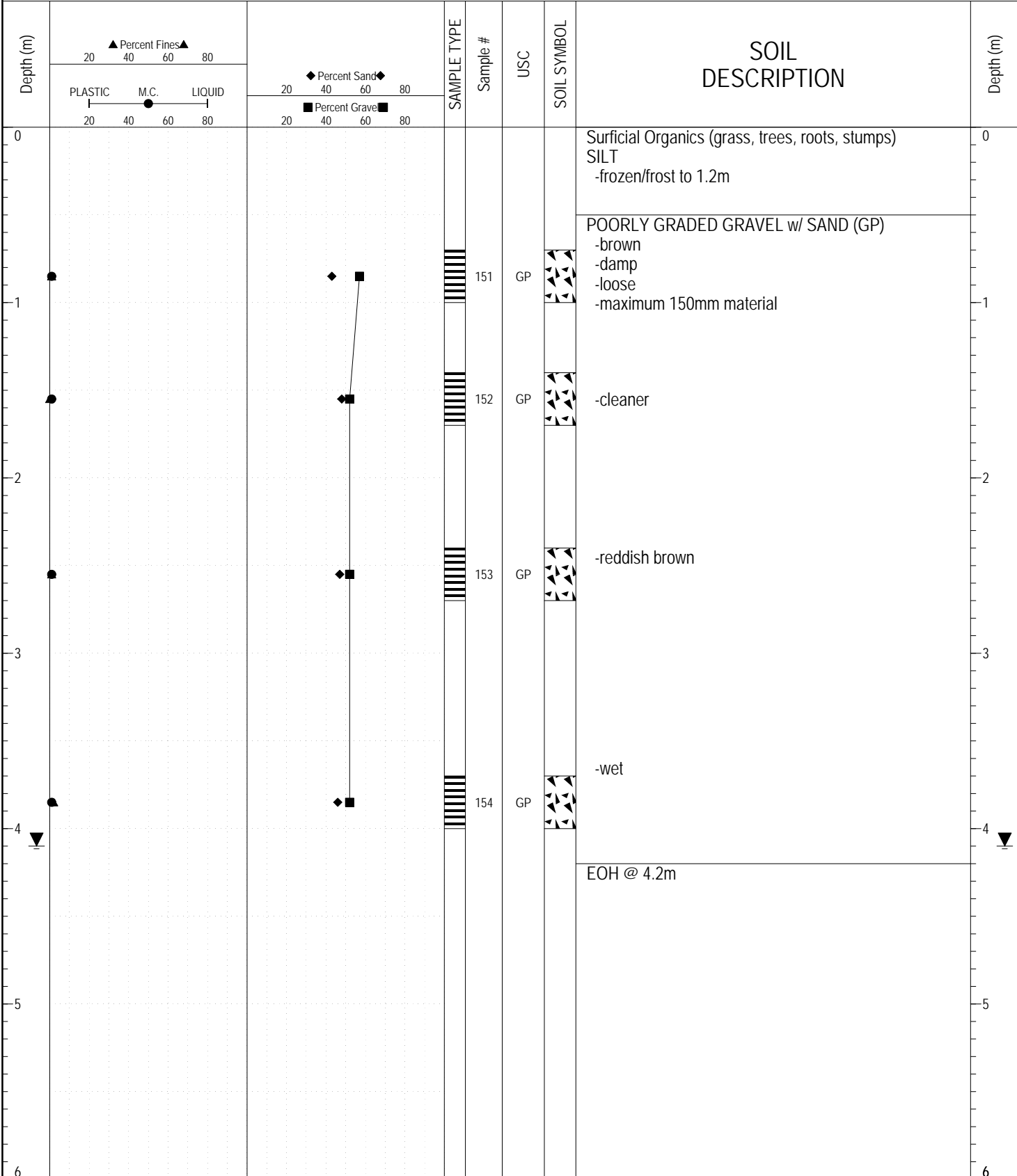
SAMPLE TYPE RETURN S.P.T. Auger BULK TUBE CORE



GEOTECH GRAVEL 726.GPJ YTG.GDT 3/3/17

SUBSURFACE EXPLORATION AND TEST REPORT		Watson Lake Airport Geotechnical Investigation	BOREHOLE NO: 726-3712
CLIENT: Transportation Engineering		Km 10.1 Campbell Highway Pit ID# 105 A-49	PROJECT NO: 552-202335-02-0665
Kobelco SK300 Excavator		LOCATION: SEE PLAN / GPS	ELEVATION:

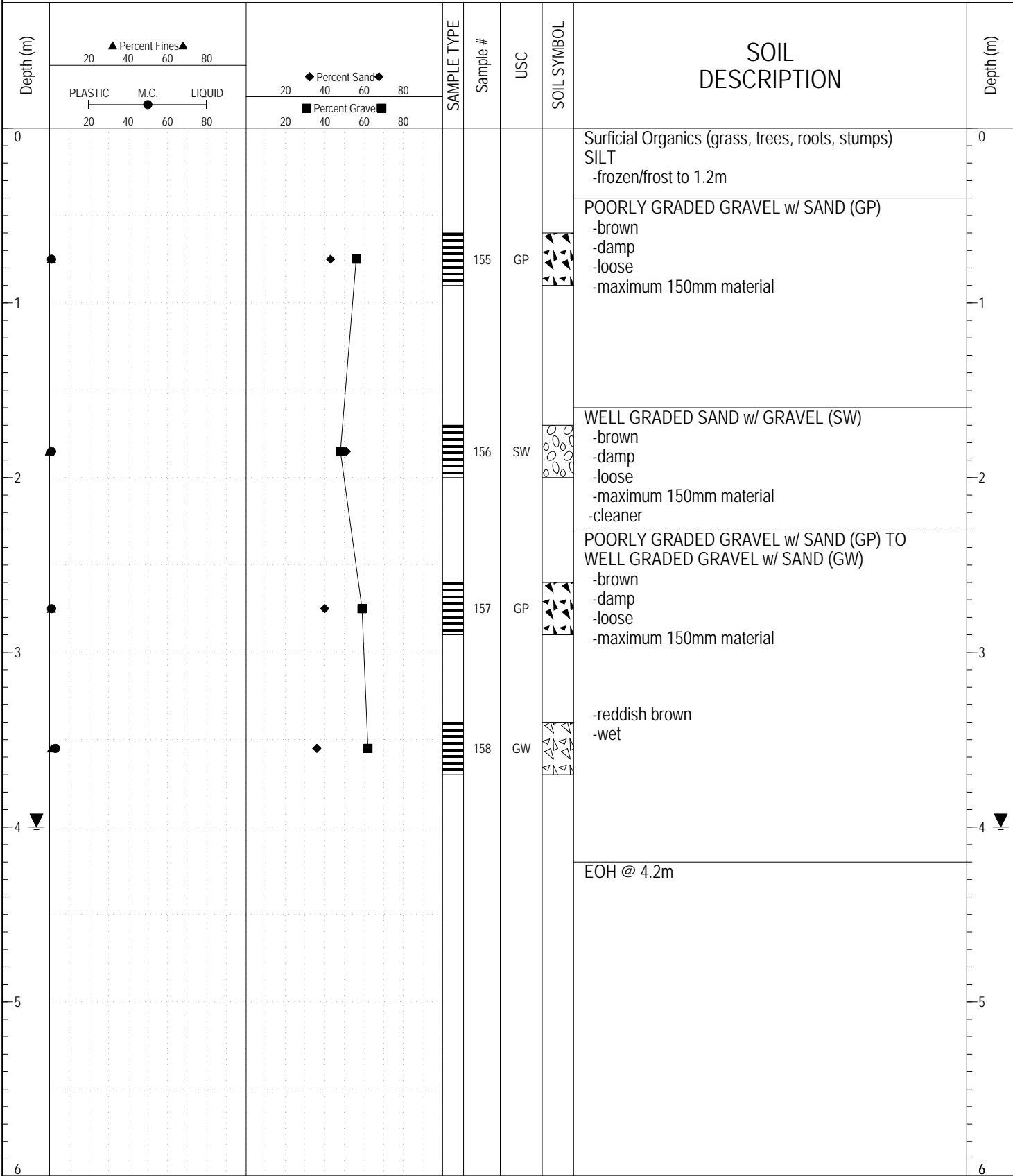
SAMPLE TYPE RETURN S.P.T. Auger BULK TUBE CORE



GEOTECH GRAVEL 726.GPJ YTG.GDT 3/3/17

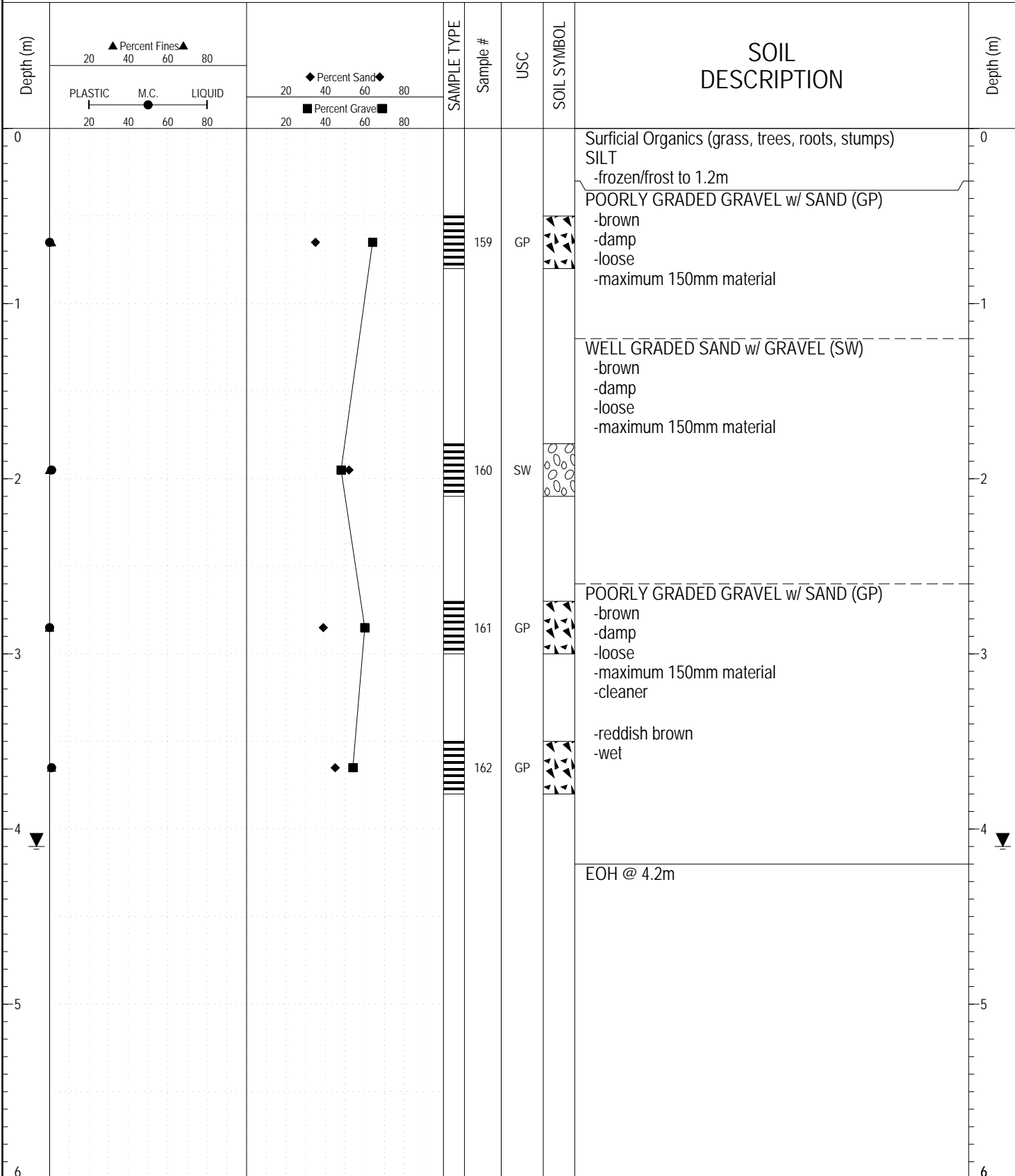
SUBSURFACE EXPLORATION AND TEST REPORT		Watson Lake Airport Geotechnical Investigation	BOREHOLE NO: 726-3713
CLIENT: Transportation Engineering		Km 10.1 Campbell Highway Pit ID# 105 A-49	PROJECT NO: 552-202335-02-0665
Kobelco SK300 Excavator		LOCATION: SEE PLAN / GPS	ELEVATION:

SAMPLE TYPE RETURN S.P.T. Auger BULK TUBE CORE



GEOTECH GRAVEL 726.GPJ YTG.GDT 3/3/17

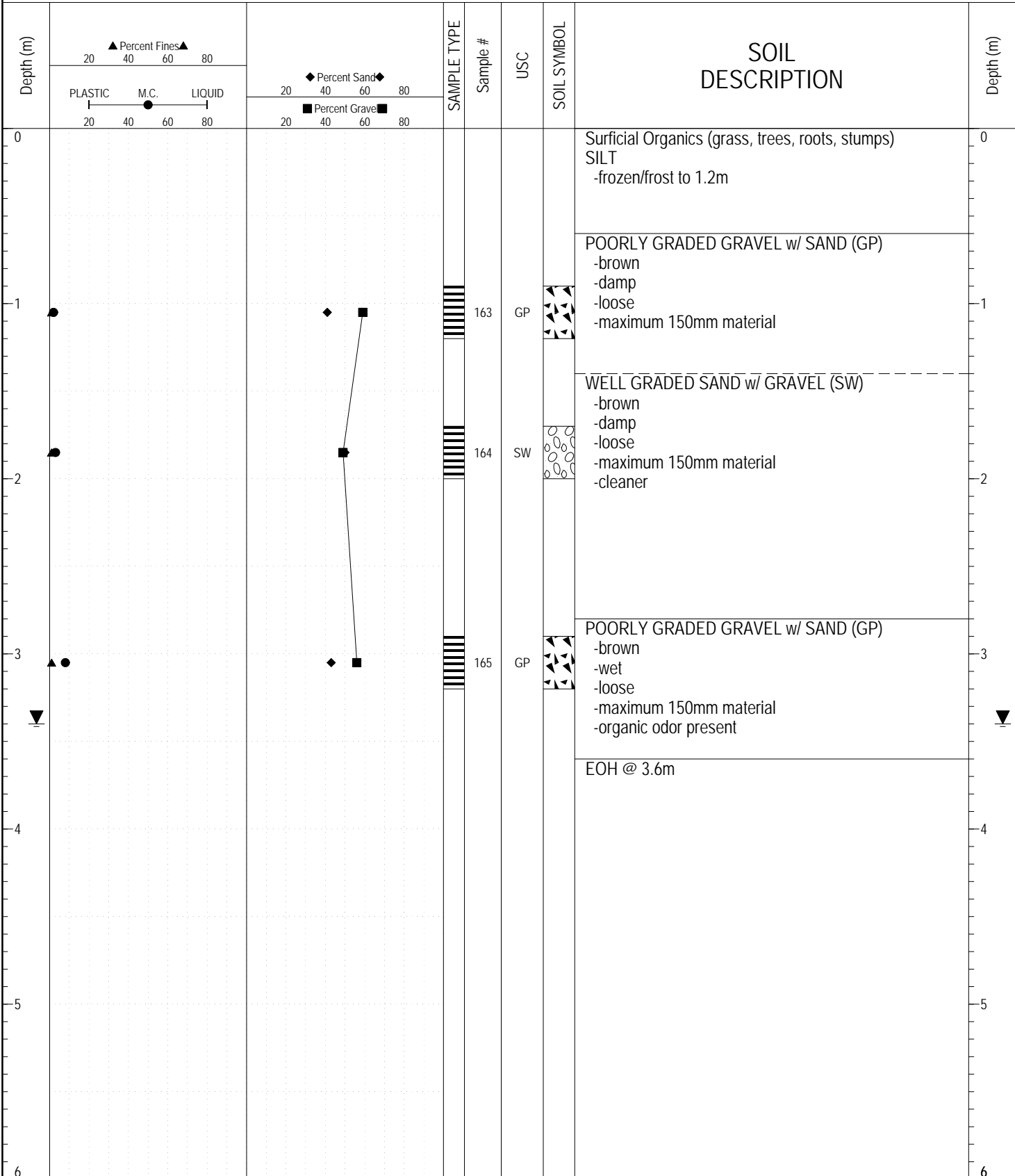
SAMPLE TYPE RETURN S.P.T. Auger BULK TUBE CORE



GEOTECH GRAVEL 726.GPJ YTG.GDT 3/3/17

SUBSURFACE EXPLORATION AND TEST REPORT		Watson Lake Airport Geotechnical Investigation	BOREHOLE NO: 726-3715
CLIENT: Transportation Engineering		Km 10.1 Campbell Highway Pit ID# 105 A-49	PROJECT NO: 552-202335-02-0665
Kobelco SK300 Excavator		LOCATION: SEE PLAN / GPS	ELEVATION:

SAMPLE TYPE RETURN S.P.T. Auger BULK TUBE CORE



GEOTECH GRAVEL 726.GPJ YTG.GDT 3/3/17