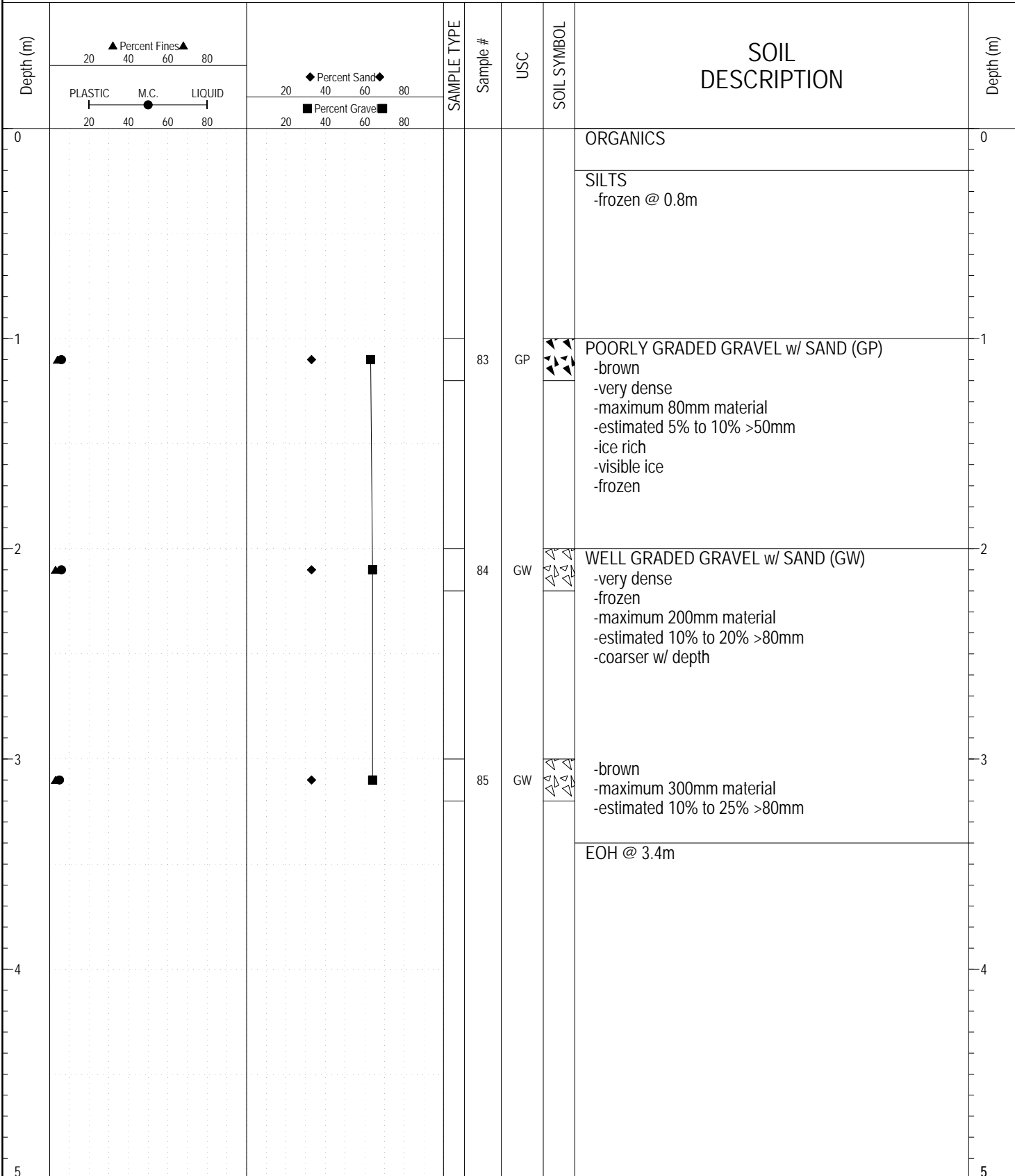


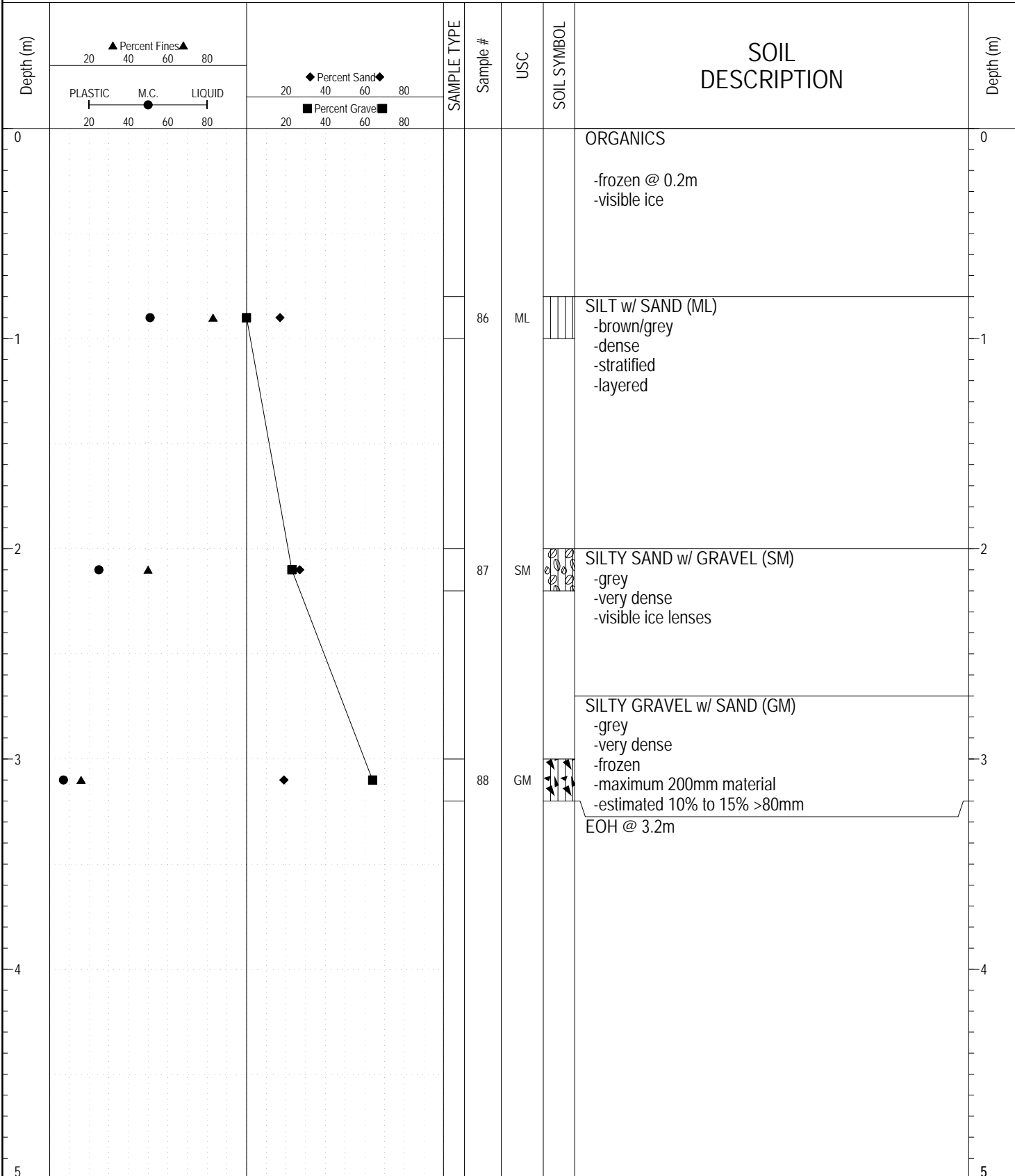
SUBSURFACE EXPLORATION AND TEST REPORT		Donjek Flats Pit Exploration	BOREHOLE NO: 759-4008
CLIENT: Transportation Engineering			PROJECT NO: 552-202101
Hitachi EX200LC Excavator		LOCATION: See Plans/GPS	ELEVATION:

SAMPLE TYPE RETURN S.P.T. Auger BULK TUBE CORE



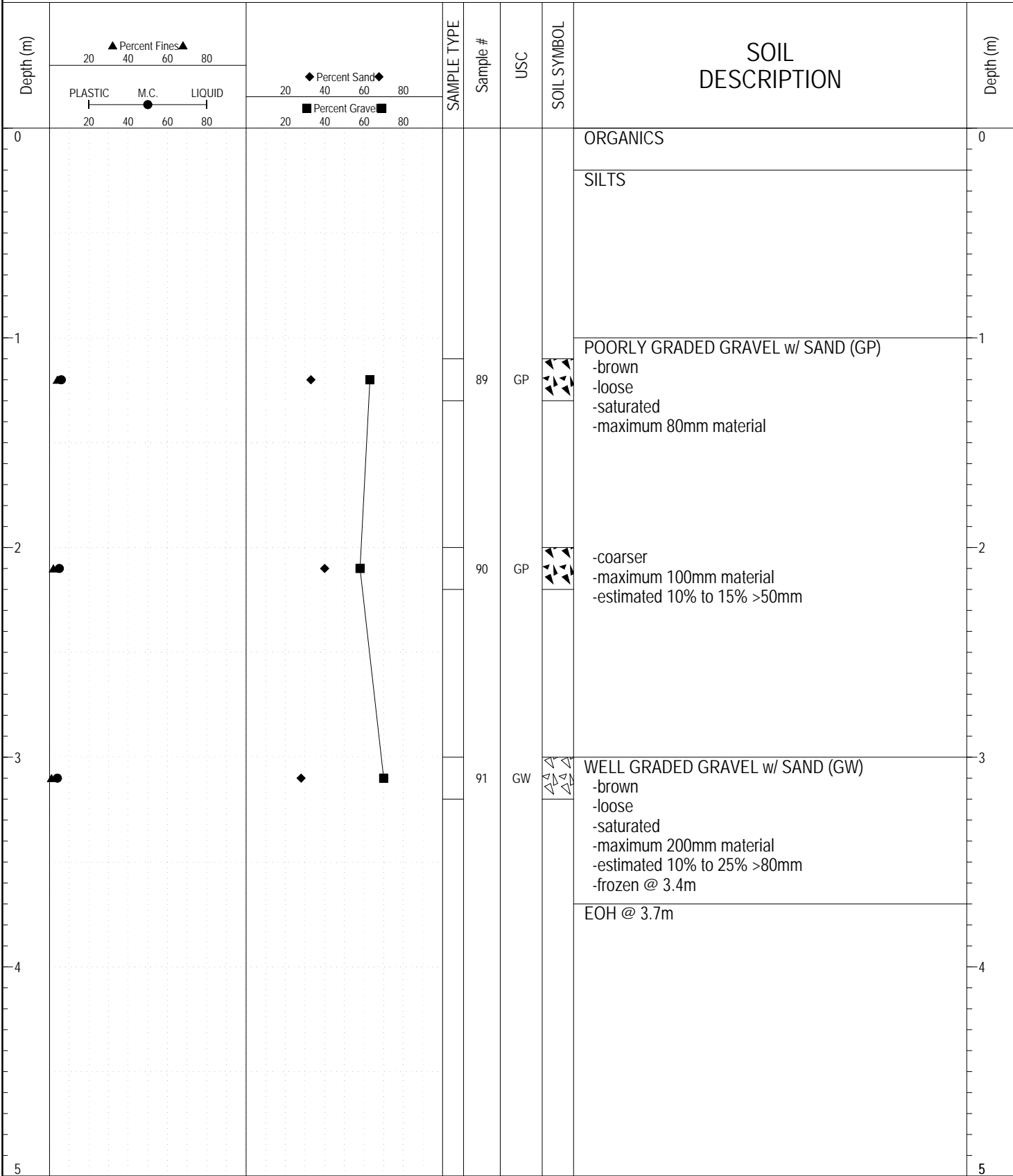
GEOTECH GRAVEL 759.GPJ YTG.GDT 6/14/17

SAMPLE TYPE RETURN S.P.T. Auger BULK TUBE CORE



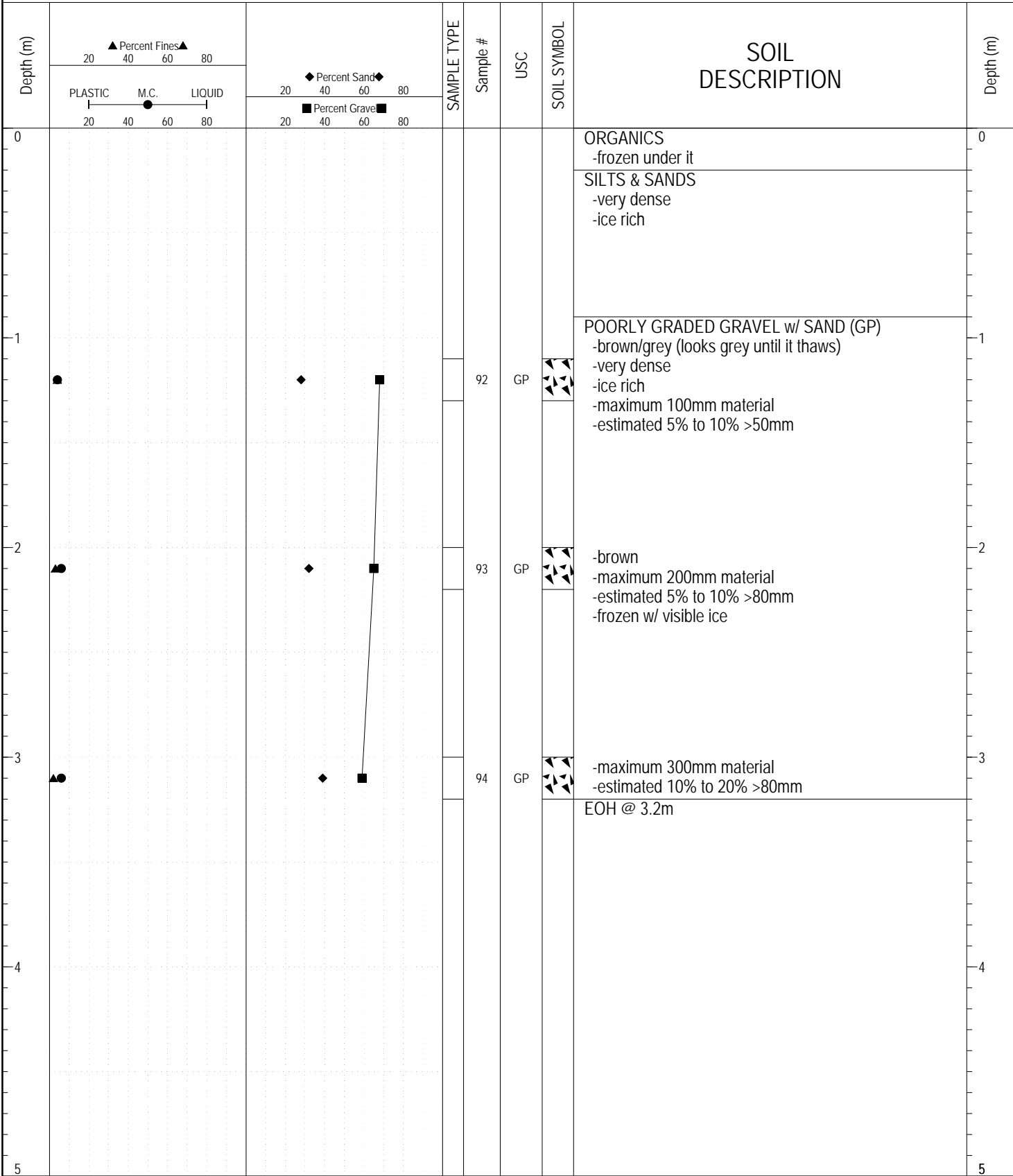
GEOTECH GRAVEL 759.GPJ YTG.GDT 6/14/17

SAMPLE TYPE RETURN S.P.T. Auger BULK TUBE CORE



GEOTECH GRAVEL 759.GPJ YTG.GDT 6/14/17

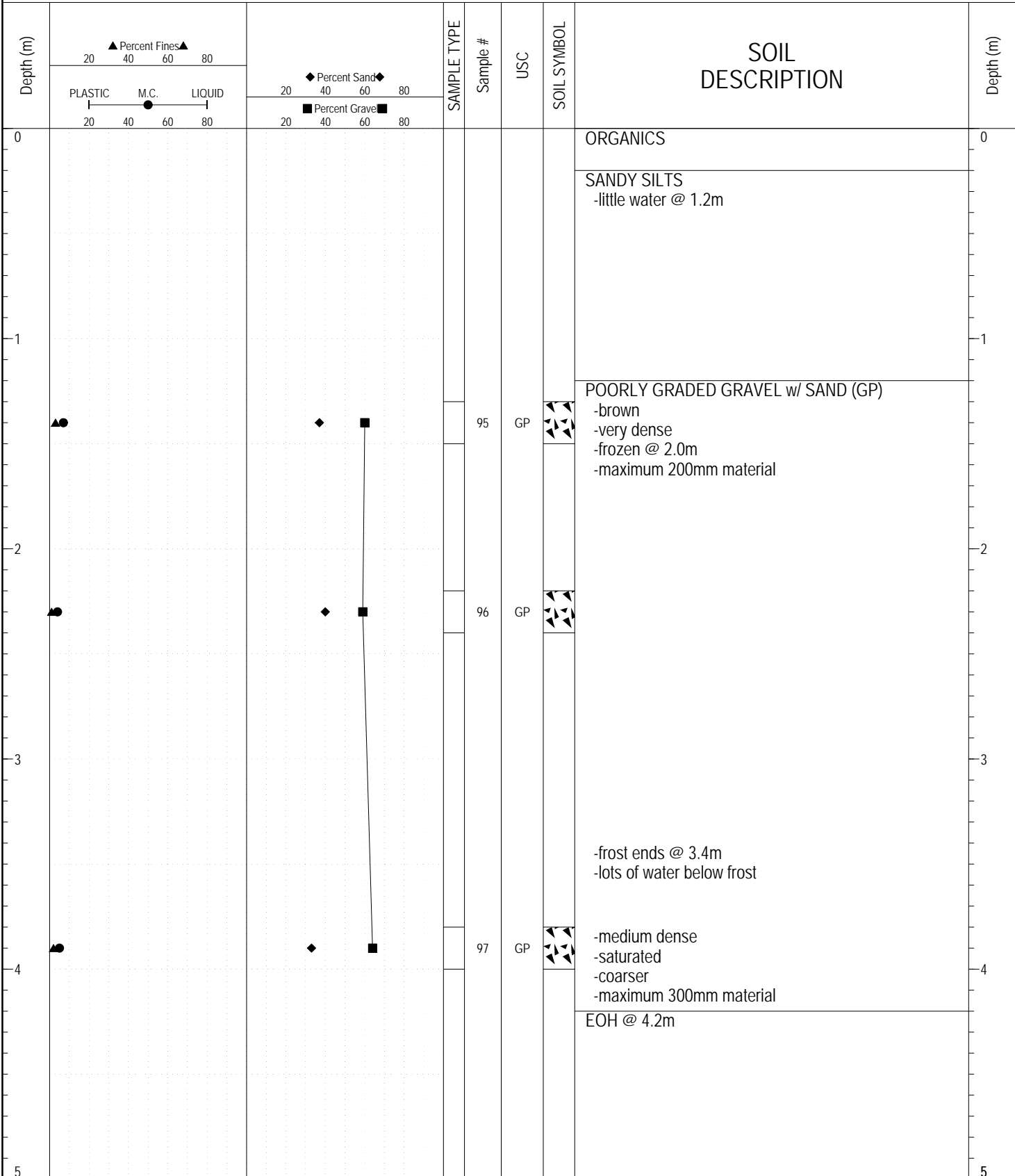
SAMPLE TYPE RETURN S.P.T. Auger BULK TUBE CORE



GEOTECH GRAVEL 759.GPJ YTG.GDT 6/14/17

SUBSURFACE EXPLORATION AND TEST REPORT		Donjek Flats Pit Exploration	BOREHOLE NO: 759-4012
CLIENT: Transportation Engineering			PROJECT NO: 552-202101
Hitachi EX200LC Excavator		LOCATION: See Plans/GPS	ELEVATION:

SAMPLE TYPE RETURN S.P.T. Auger BULK TUBE CORE



GEOTECH GRAVEL 759.GPJ YTG.GDT 6/14/17

SUBSURFACE EXPLORATION AND TEST REPORT		Donjek Flats Pit Exploration	BOREHOLE NO: 759-4013
CLIENT: Transportation Engineering			PROJECT NO: 552-202101
Hitachi EX200LC Excavator		LOCATION: See Plans/GPS	ELEVATION:

SAMPLE TYPE RETURN S.P.T. Auger BULK TUBE CORE

Depth (m)	▲ Percent Fines ▲ 20 40 60 80		◆ Percent Sand ◆ 20 40 60 80		SAMPLE TYPE	Sample #	USC	SOIL SYMBOL	SOIL DESCRIPTION	Depth (m)
	PLASTIC M.C. LIQUID 20 40 60 80		■ Percent Gravel ■ 20 40 60 80							
0									ORGANICS	0
									SILTS	
									ORGANICS	
									SILTS	
1									-surface water flowing into hole -not frozen throughout depth achieved	1
2										2
3						98	GP-GM		POORLY GRADED GRAVEL w/ SILT & SAND (GP-GM)	3
4									-coarser w/ depth	4
5									EOH @ 4.5m	5

GEOTECH GRAVEL 759.GPJ YTG.GDT 6/14/17



Highways and Public Works
Transportation Engineering Branch

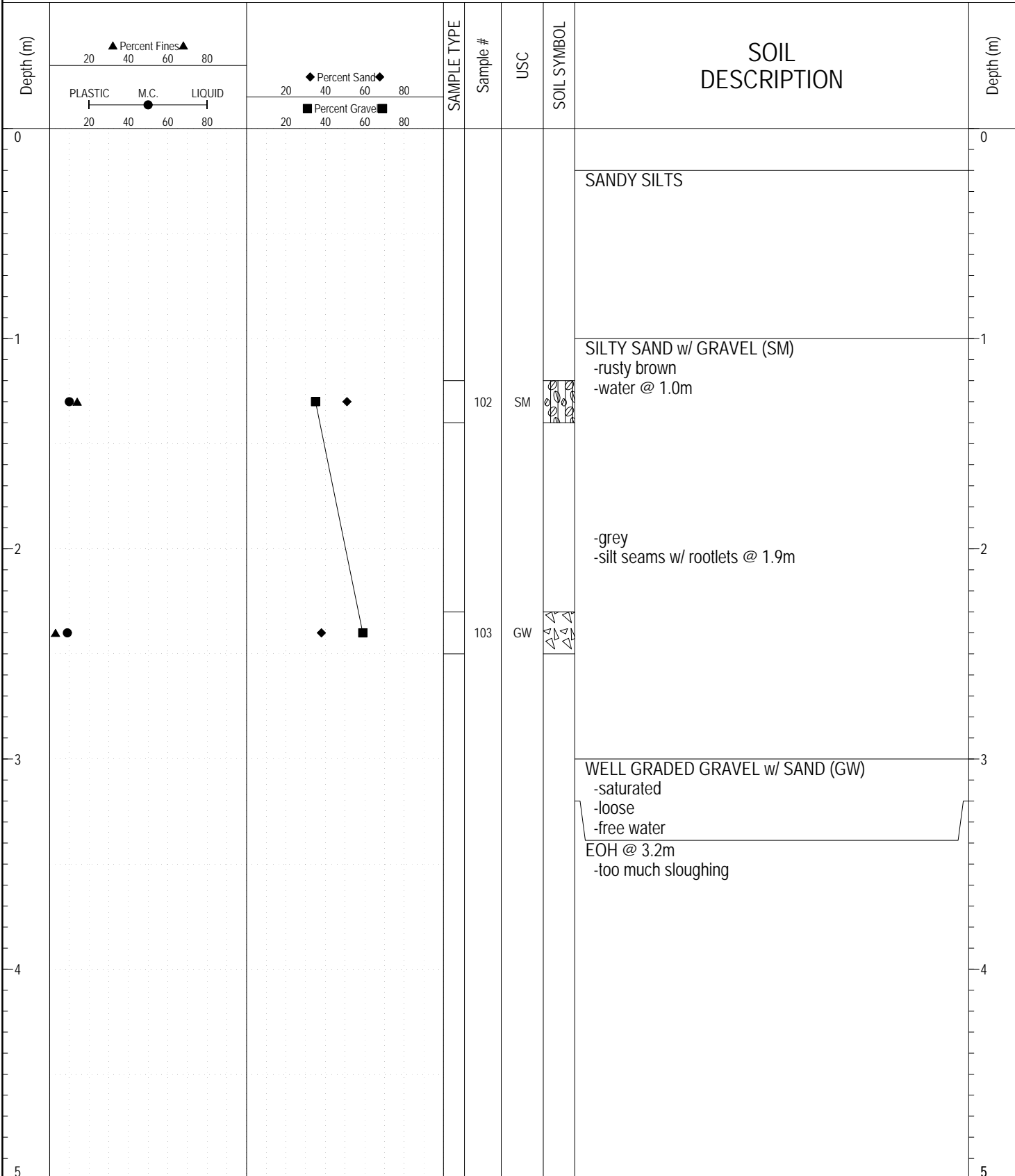
LOGGED BY: YTG-SH	COMPLETION DEPTH: 4.50 m
REVIEWED BY: YTG-KJ	COMPLETION DATE: 8/28/10
	Page 1 of 1

SUBSURFACE EXPLORATION AND TEST REPORT		Donjek Flats Pit Exploration		BOREHOLE NO: 759-4014						
CLIENT: Transportation Engineering				PROJECT NO: 552-202101						
Hitachi EX200LC Excavator		LOCATION: See Plans/GPS		ELEVATION:						
SAMPLE TYPE		<input checked="" type="checkbox"/> RETURN	<input type="checkbox"/> S.P.T.	<input checked="" type="checkbox"/> Auger	<input type="checkbox"/> BULK					
		<input type="checkbox"/>	<input type="checkbox"/>	<input type="checkbox"/>	<input type="checkbox"/> TUBE					
		<input type="checkbox"/>	<input type="checkbox"/>	<input type="checkbox"/>	<input checked="" type="checkbox"/> CORE					
Depth (m)	▲ Percent Fines ▲		◆ Percent Sand ◆		SAMPLE TYPE	Sample #	USC	SOIL SYMBOL	SOIL DESCRIPTION	Depth (m)
	20	40	60	80						
	PLASTIC M.C. LIQUID		■ Percent Gravel ■							
	20	40	60	80						
0									ORGANICS	0
									SANDY SILTS -brown -moist to wet -loose -hard frozen silts -frozen @ 0.8m	
1									WELL GRADED GRAVEL w/ SAND (GW) -brown -very dense -frozen -visible ice -maximum 200mm material	1
						99	GW			
									-saturated -medium dense -maximum 300mm material -frost ends @ 2.1m	
2						100	GW			
									-material flows like water	
3						101	GW			
4									EOH @ 4.3m	
5										5

GEOTECH GRAVEL 759.GPJ YTG.GDT 6/14/17

SUBSURFACE EXPLORATION AND TEST REPORT		Donjek Flats Pit Exploration	BOREHOLE NO: 759-4015
CLIENT: Transportation Engineering			PROJECT NO: 552-202101
Hitachi EX200LC Excavator		LOCATION: See Plans/GPS	ELEVATION:

SAMPLE TYPE RETURN S.P.T. Auger BULK TUBE CORE



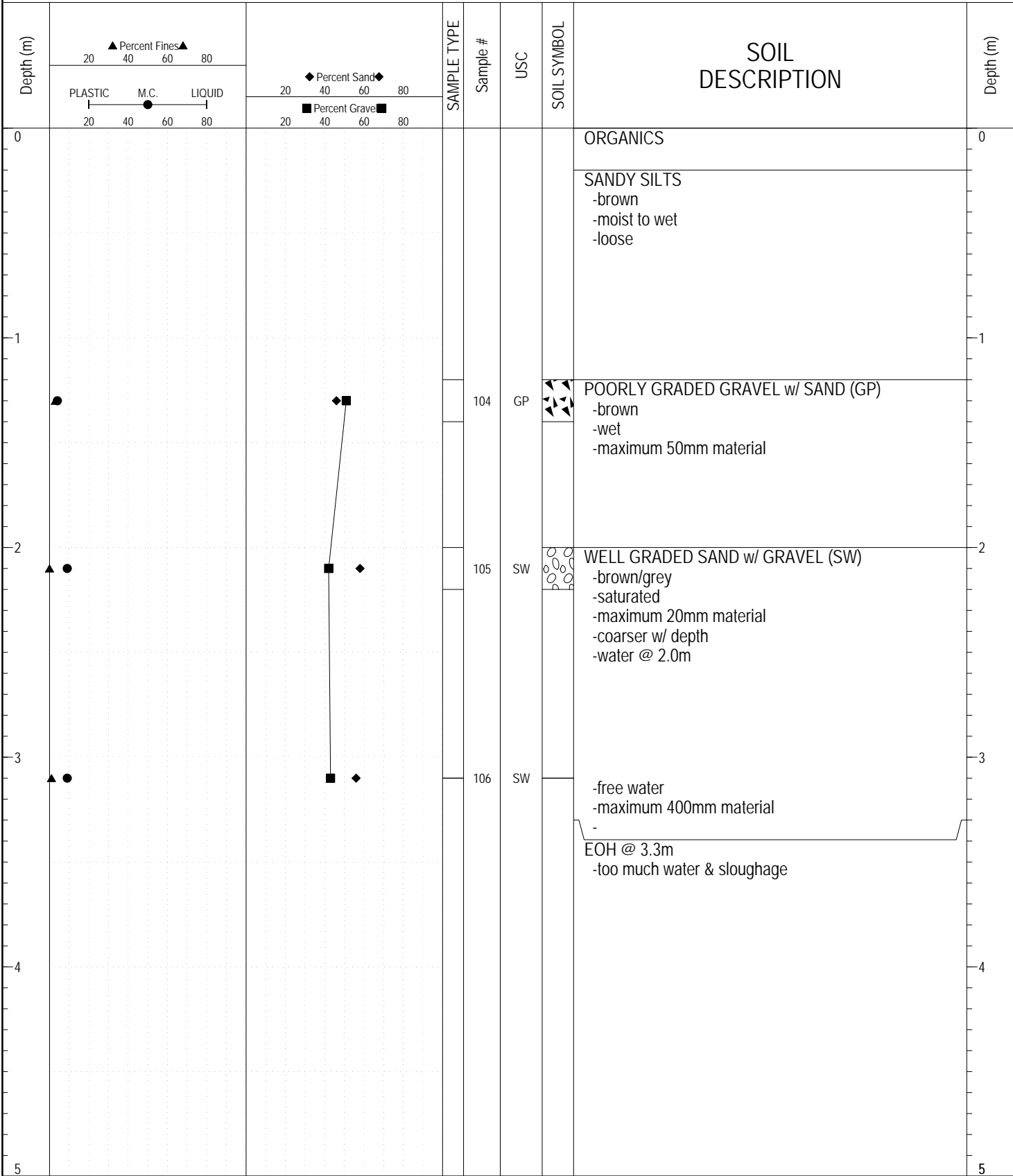
GEOTECH GRAVEL 759.GPJ YTG.GDT 6/14/17



Highways and Public Works
Transportation Engineering Branch

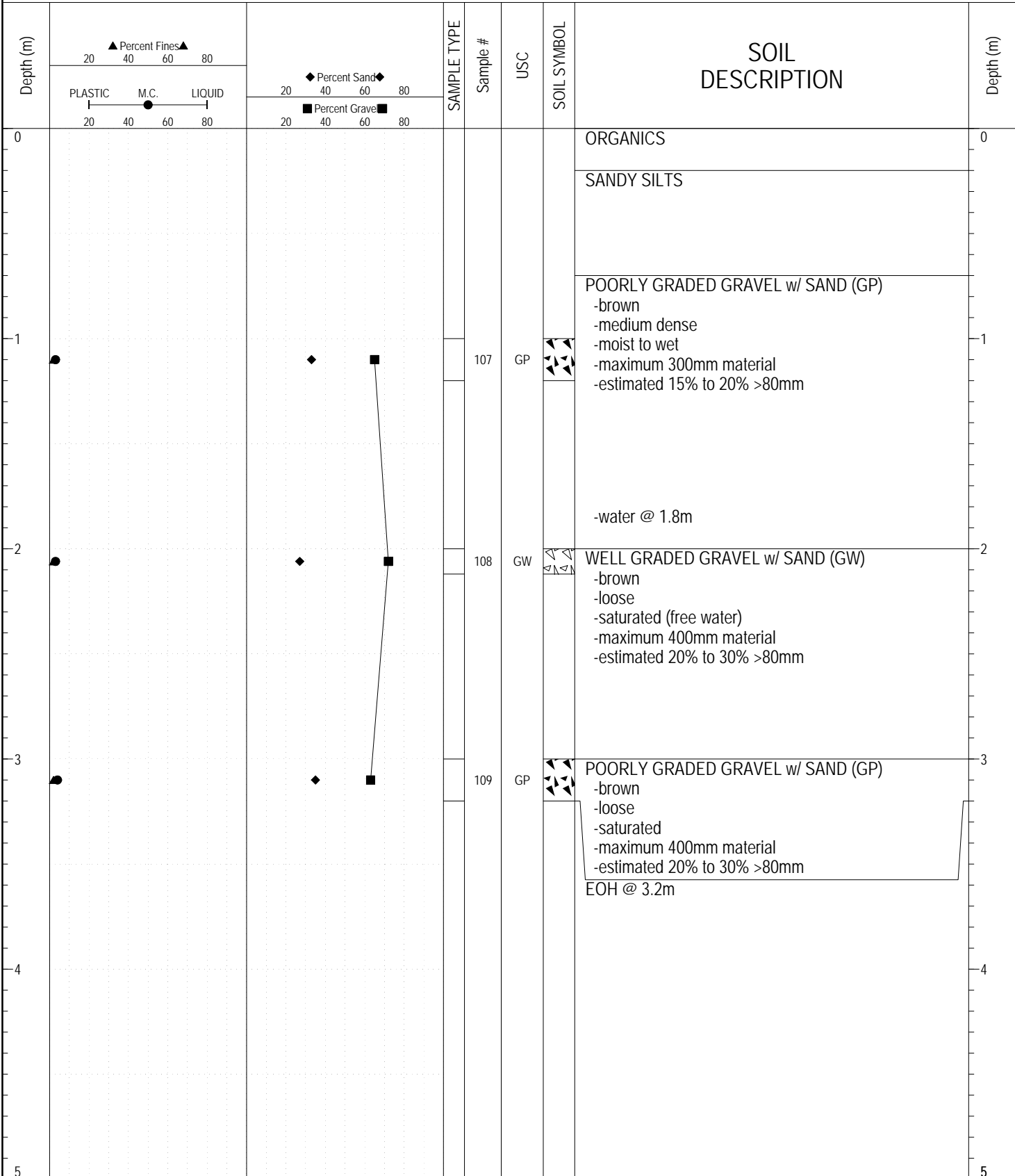
LOGGED BY: YTG-SH	COMPLETION DEPTH: 3.20 m
REVIEWED BY: YTG-KJ	COMPLETION DATE: 8/28/10
	Page 1 of 1

SAMPLE TYPE RETURN S.P.T. Auger BULK TUBE CORE



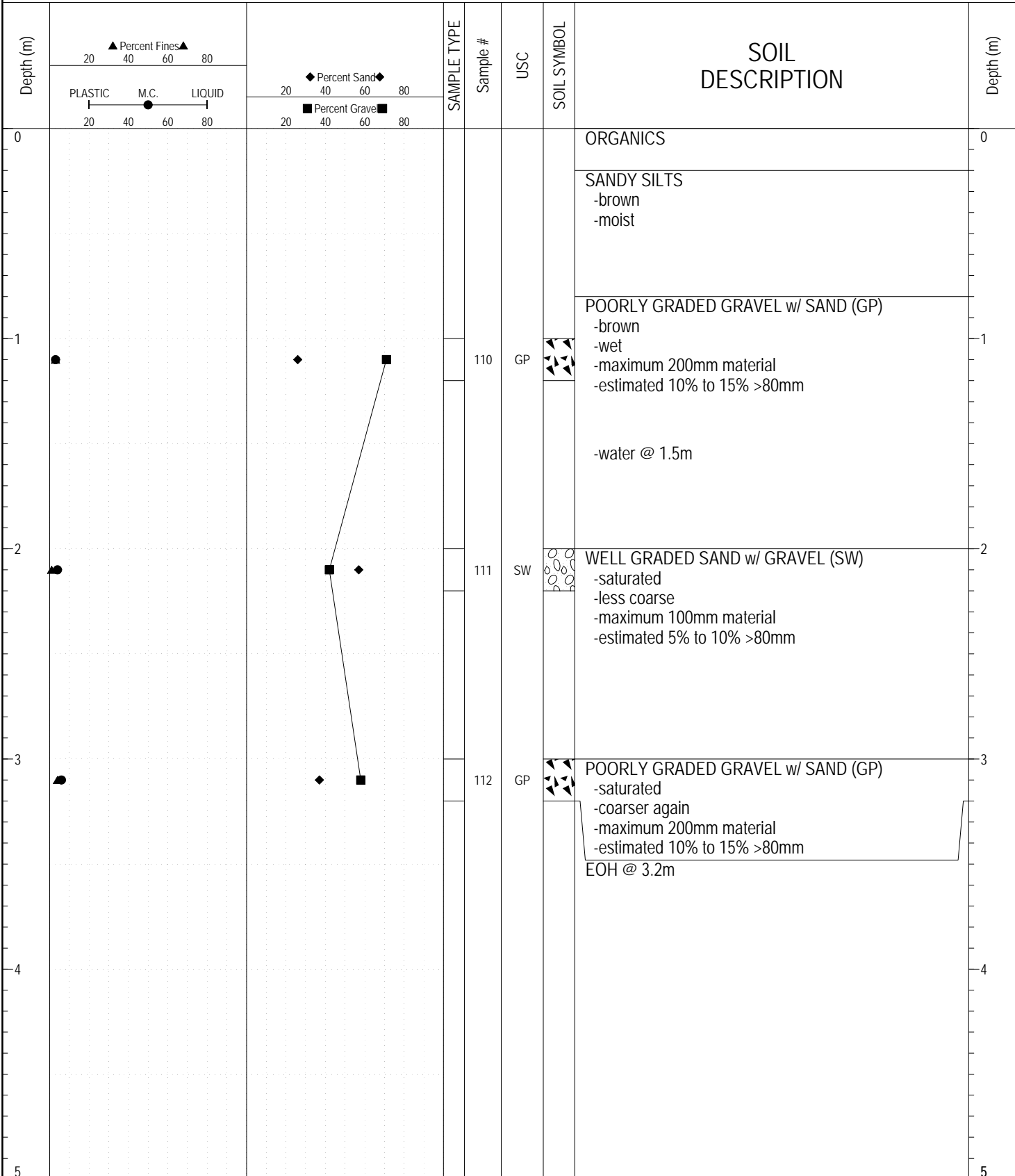
GEOTECH GRAVEL 759.GPJ YTG.GDT 6/14/17

SAMPLE TYPE RETURN S.P.T. Auger BULK TUBE CORE



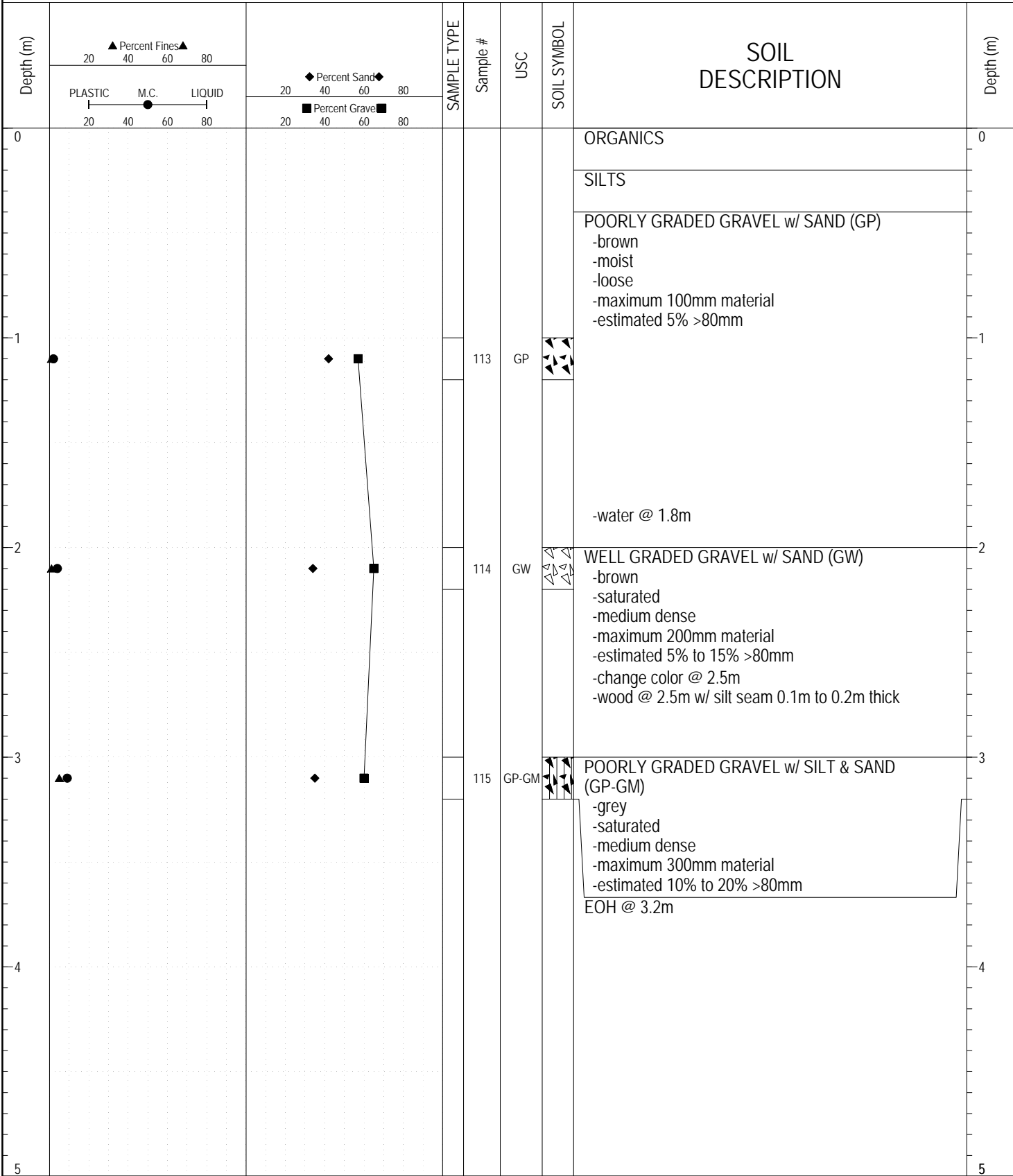
GEOTECH GRAVEL 759.GPJ YTG.GDT 6/14/17

SAMPLE TYPE RETURN S.P.T. Auger BULK TUBE CORE



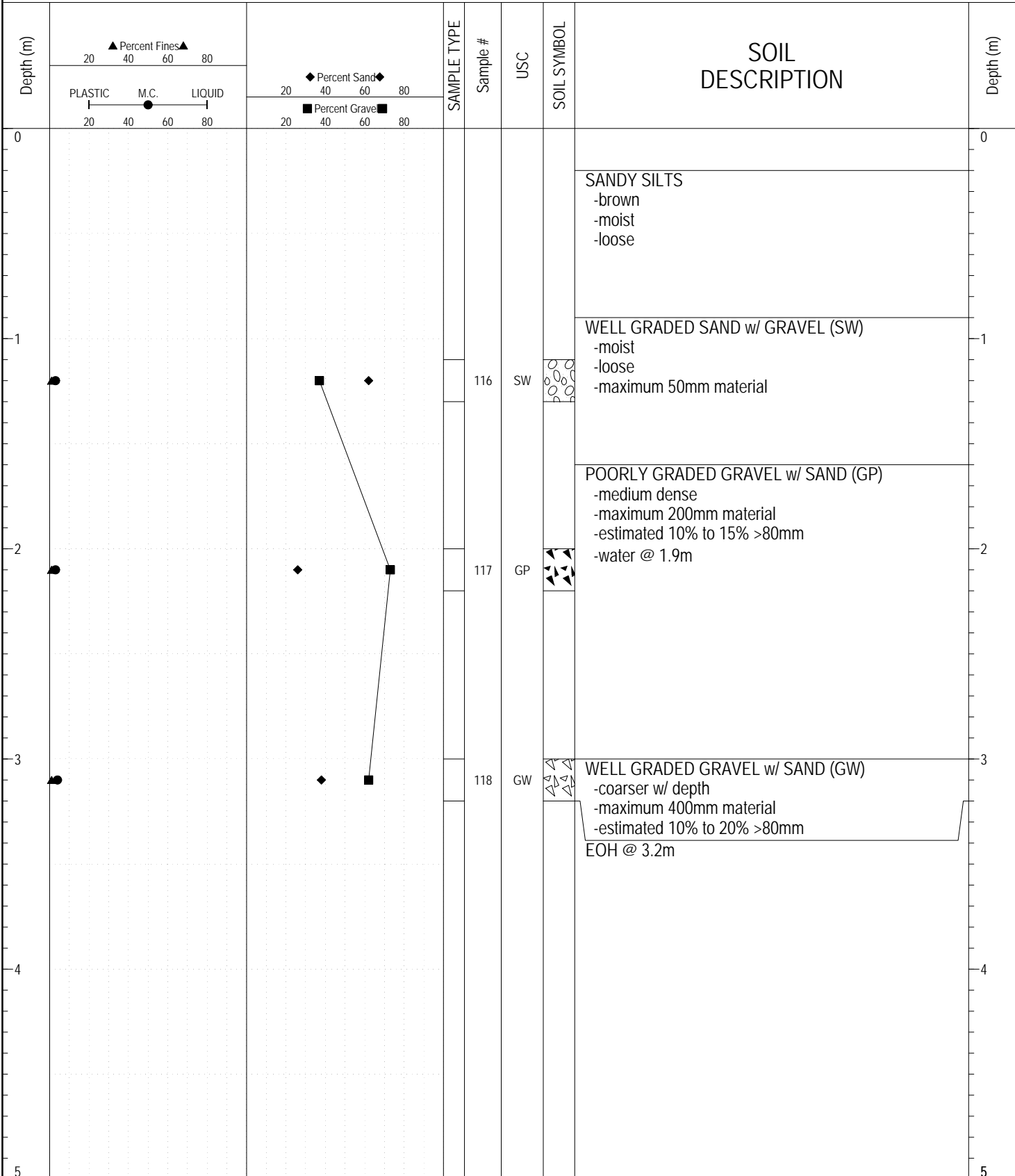
GEOTECH GRAVEL 759.GPJ YTG.GDT 6/14/17

SAMPLE TYPE RETURN S.P.T. Auger BULK TUBE CORE



GEOTECH GRAVEL 759.GPJ YTG.GDT 6/14/17

SAMPLE TYPE RETURN S.P.T. Auger BULK TUBE CORE



GEOTECH GRAVEL 759.GPJ YTG.GDT 6/14/17