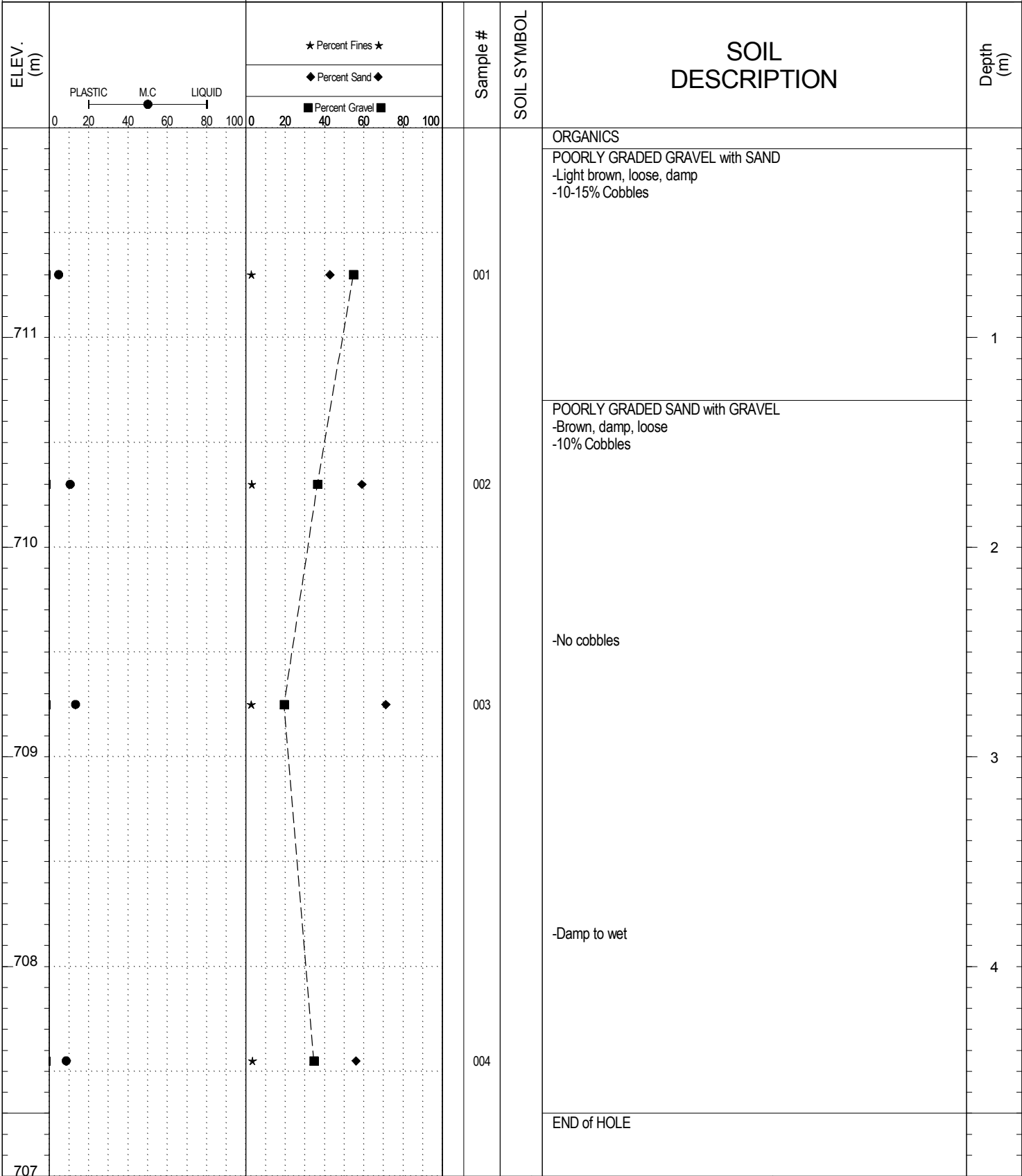


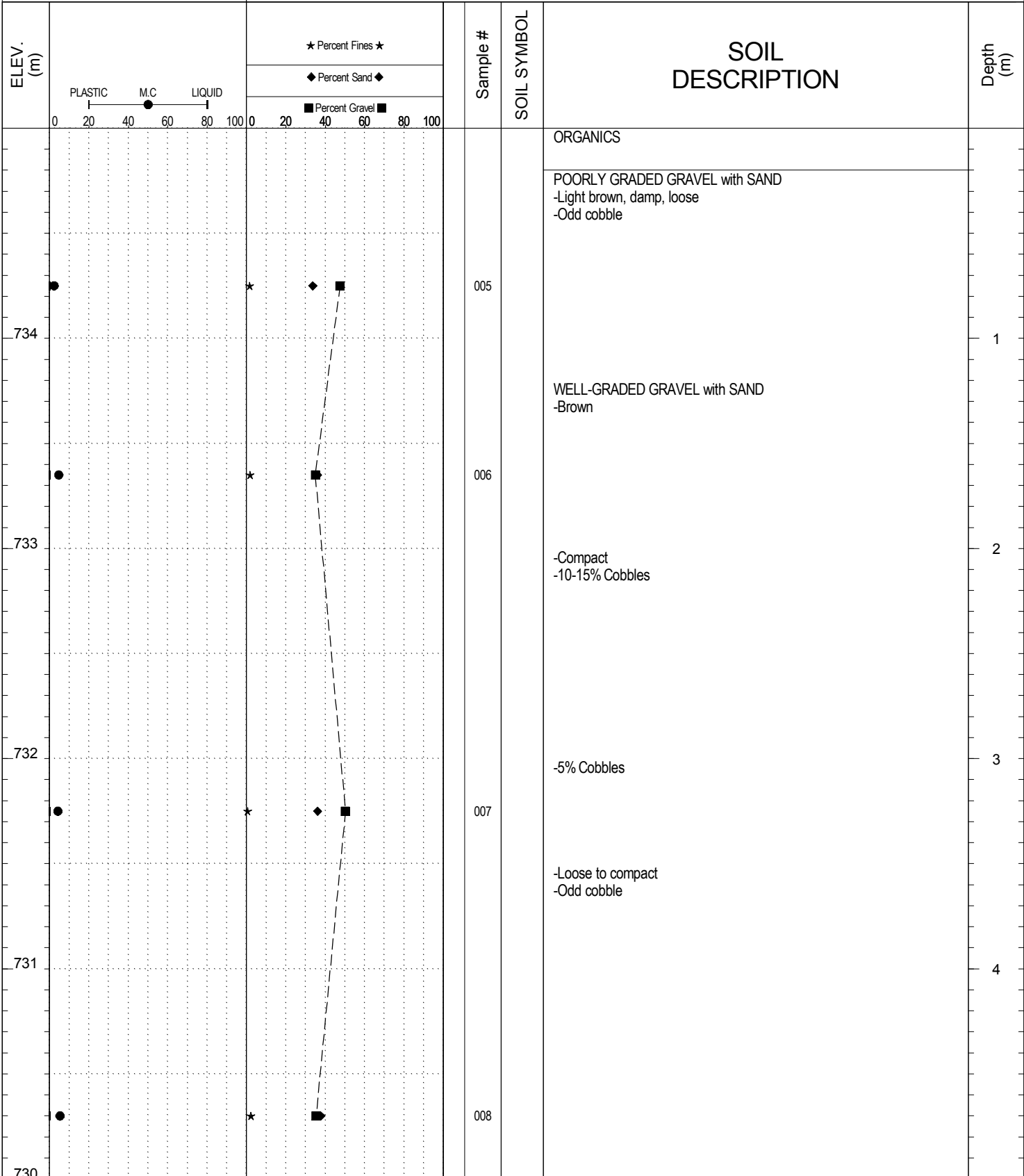
SUBSURFACE EXPLORATION AND TEST REPORT	Ten Mile Creek	SOURCE/TP#: 800-4378
Deadman	Alaska Highway, , 105-C-15	PROJECT NO: 552-202101-1001-1-5
Volvo Excavator 210BLC	Coordinates: Z08 N6679292.5m E616053.1m	ELEVATION: 712m

SAMPLE TYPE RETURN UNDISTURBED AUGER BULK TUBE CORE



SUBSURFACE EXPLORATION AND TEST REPORT	Ten Mile Creek	SOURCE/TP#: 800-4379
Deadman	Alaska Highway , 105-C-15	PROJECT NO: 552-202101-1001-1-5
Volvo Excavator 210BLC	Coordinates: Z08 N6679472.7m E616310.8m	ELEVATION: 735m

SAMPLE TYPE RETURN UNDISTURBED AUGER BULK TUBE CORE

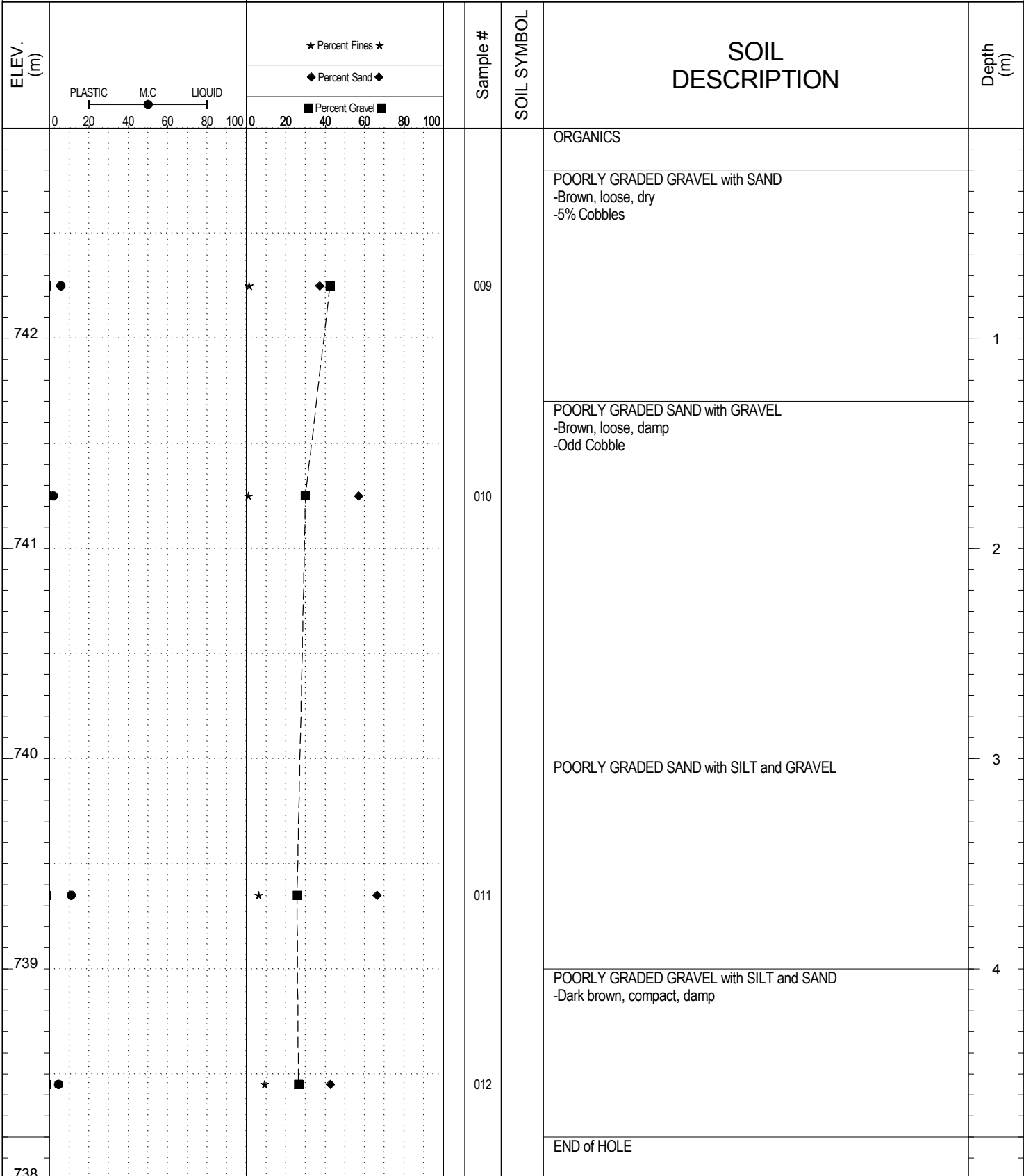


**Highways and Public Works
Transportation Engineering Branch**

LOGGED BY: B.Tyhy	Termination Depth: 5m
REVIEWED BY:	Complete: 7/17/2013 2:00:00 PM
PROJECT ENGINEER: M. Idrees	Pit #: 105-C-15 Page 1 of 2

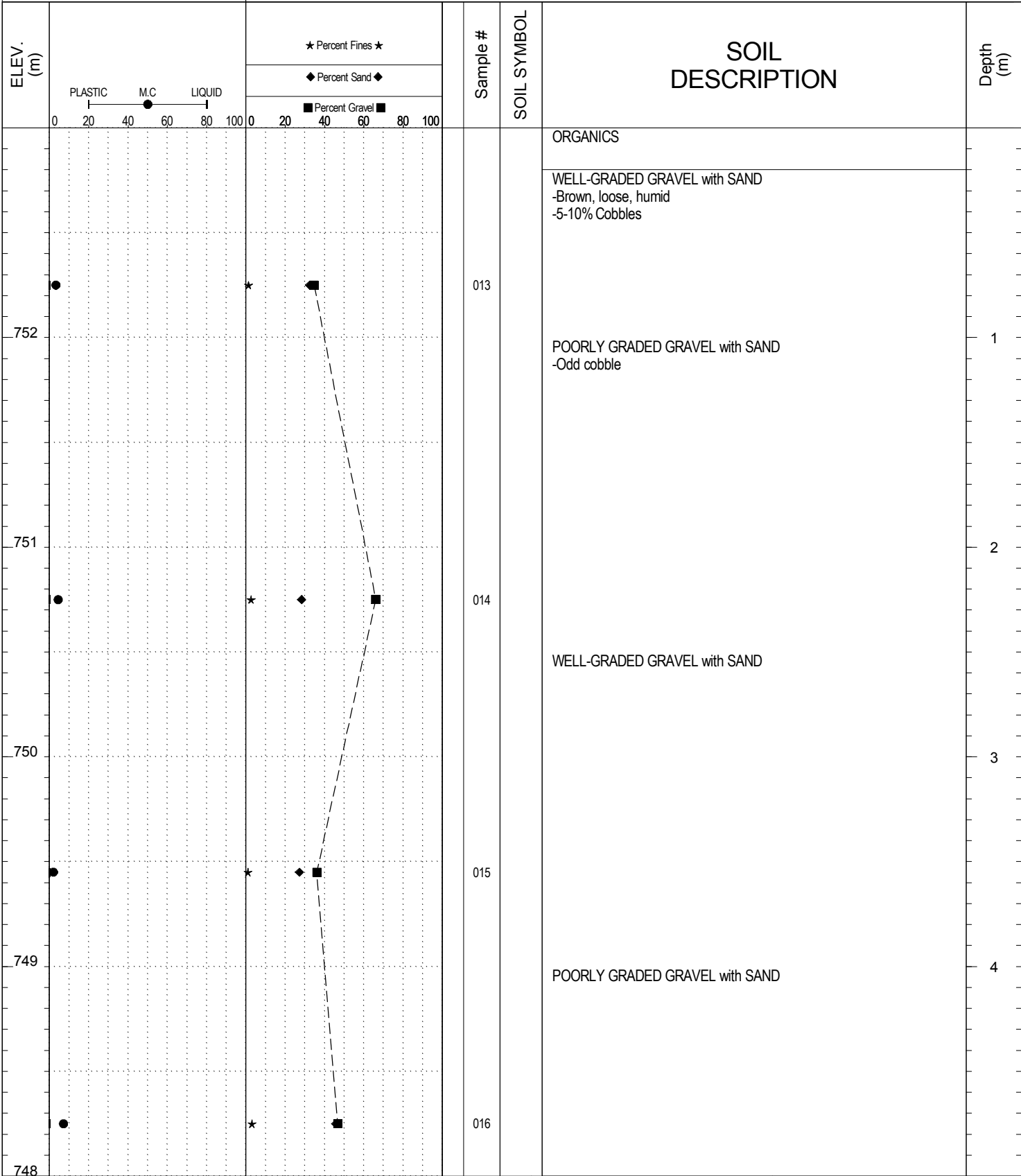
SUBSURFACE EXPLORATION AND TEST REPORT		Ten Mile Creek	SOURCE/TP#: 800-4380
Deadman		Alaska Highway , 105-C-15	PROJECT NO: 552-202101-1001-1-5
Volvo Excavator 210BLC		Coordinates: Z08 N6679441.7m E616383.7m	ELEVATION: 743m

SAMPLE TYPE RETURN UNDISTURBED AUGER BULK TUBE CORE



SUBSURFACE EXPLORATION AND TEST REPORT		Ten Mile Creek	SOURCE/TP#: 800-4381
Deadman		Alaska Highway, , 105-C-15	PROJECT NO: 552-202101-1001-1-5
Volvo Excavator 210BLC		Coordinates: Z08 N6679452.7m E616505m	ELEVATION: 753m

SAMPLE TYPE RETURN UNDISTURBED AUGER BULK TUBE CORE



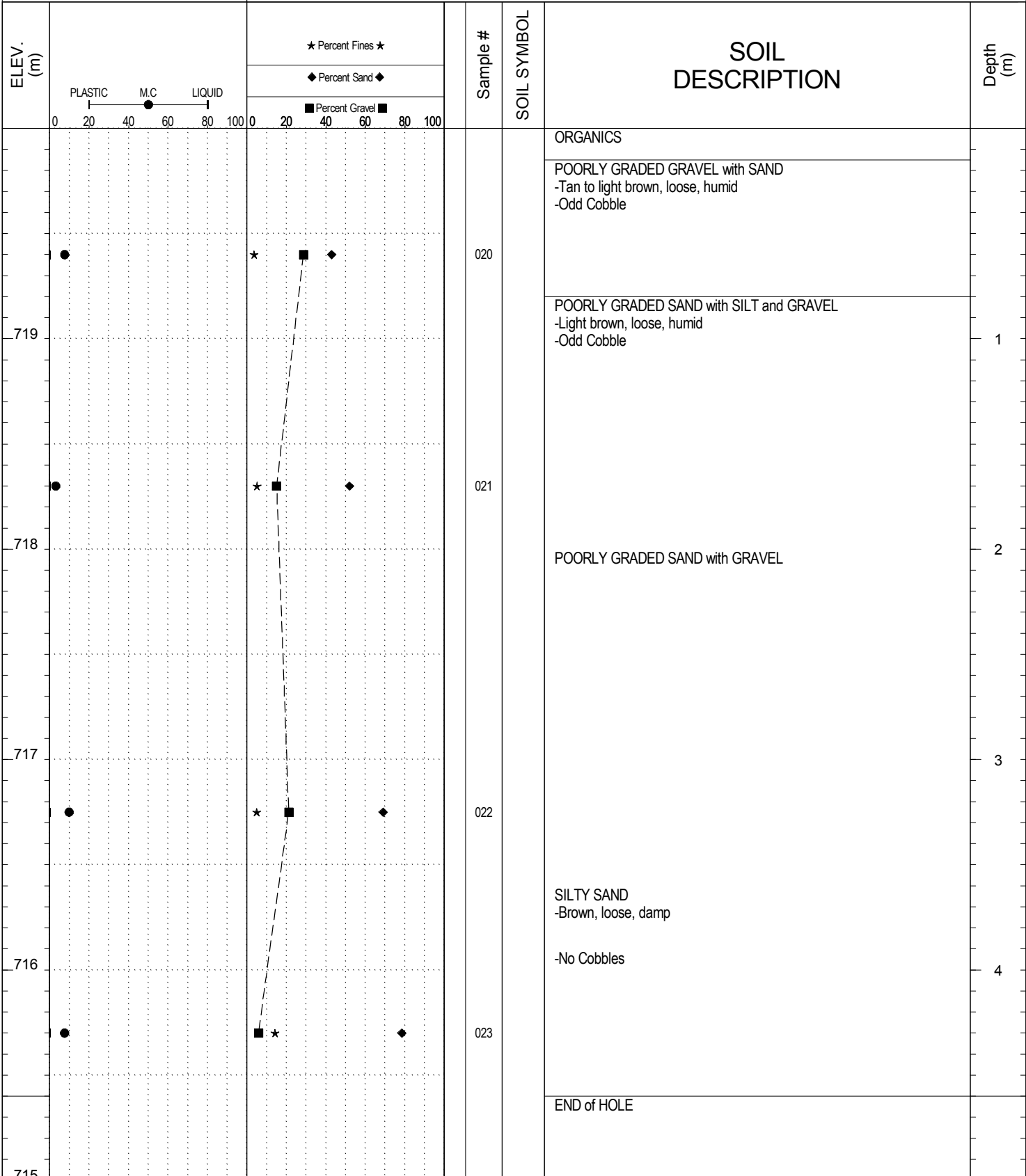
SUBSURFACE EXPLORATION AND TEST REPORT		Ten Mile Creek	SOURCE/TP#: 800-4382
Deadman		Alaska Highway, , 105-C-15	PROJECT NO: 552-202101-1001-1-5
Volvo Excavator 210BLC		Coordinates: Z08 N6679428.5m E616608.5m	ELEVATION: 749m

SAMPLE TYPE RETURN UNDISTURBED AUGER BULK TUBE CORE

ELEV. (m)	PLASTIC M.C. LIQUID		★ Percent Fines ★		Sample #	SOIL SYMBOL	SOIL DESCRIPTION	Depth (m)
	0	100	0	100				
748	20	80	40	60	017	ORGANICS	-Brownish grey	1
747	20	80	40	60	018	SILTY SAND	-Brown, loose, damp Bluish grey, very loose, sticky	2
746								3
745	20	80	40	60	019			4
744							END of HOLE	

SUBSURFACE EXPLORATION AND TEST REPORT		Ten Mile Creek	SOURCE/TP#: 800-4383
Deadman		Alaska Highway, , 105-C-15	PROJECT NO: 552-202101-1001-1-5
Volvo Excavator 210BLC		Coordinates: Z08 N6679512m E616692.6m	ELEVATION: 720m

SAMPLE TYPE RETURN UNDISTURBED AUGER BULK TUBE CORE

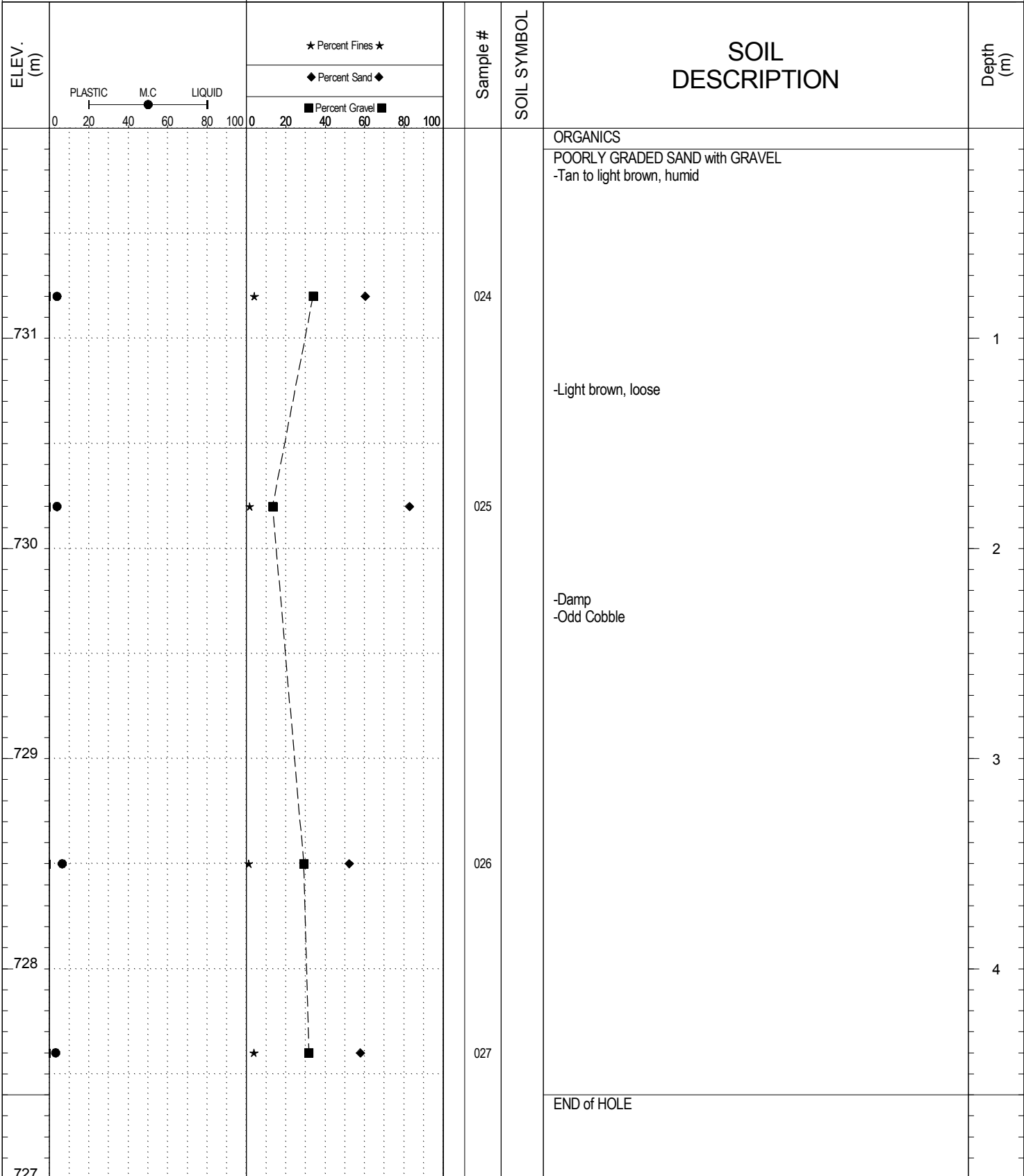


**Highways and Public Works
Transportation Engineering Branch**

LOGGED BY: B.Tyhy	Termination Depth: 4.6m
REVIEWED BY:	Complete: 7/18/2013 9:20:00 AM
PROJECT ENGINEER: M. Idrees	Pit #: 105-C-15 Page 1 of 1

SUBSURFACE EXPLORATION AND TEST REPORT	Ten Mile Creek	SOURCE/TP#: 800-4384
Deadman	Alaska Highway, , 105-C-15	PROJECT NO: 552-202101-1001-1-5
Volvo Excavator 210BLC	Coordinates: Z08 N6679677.3m E616871.4m	ELEVATION: 732m

SAMPLE TYPE RETURN UNDISTURBED AUGER BULK TUBE CORE

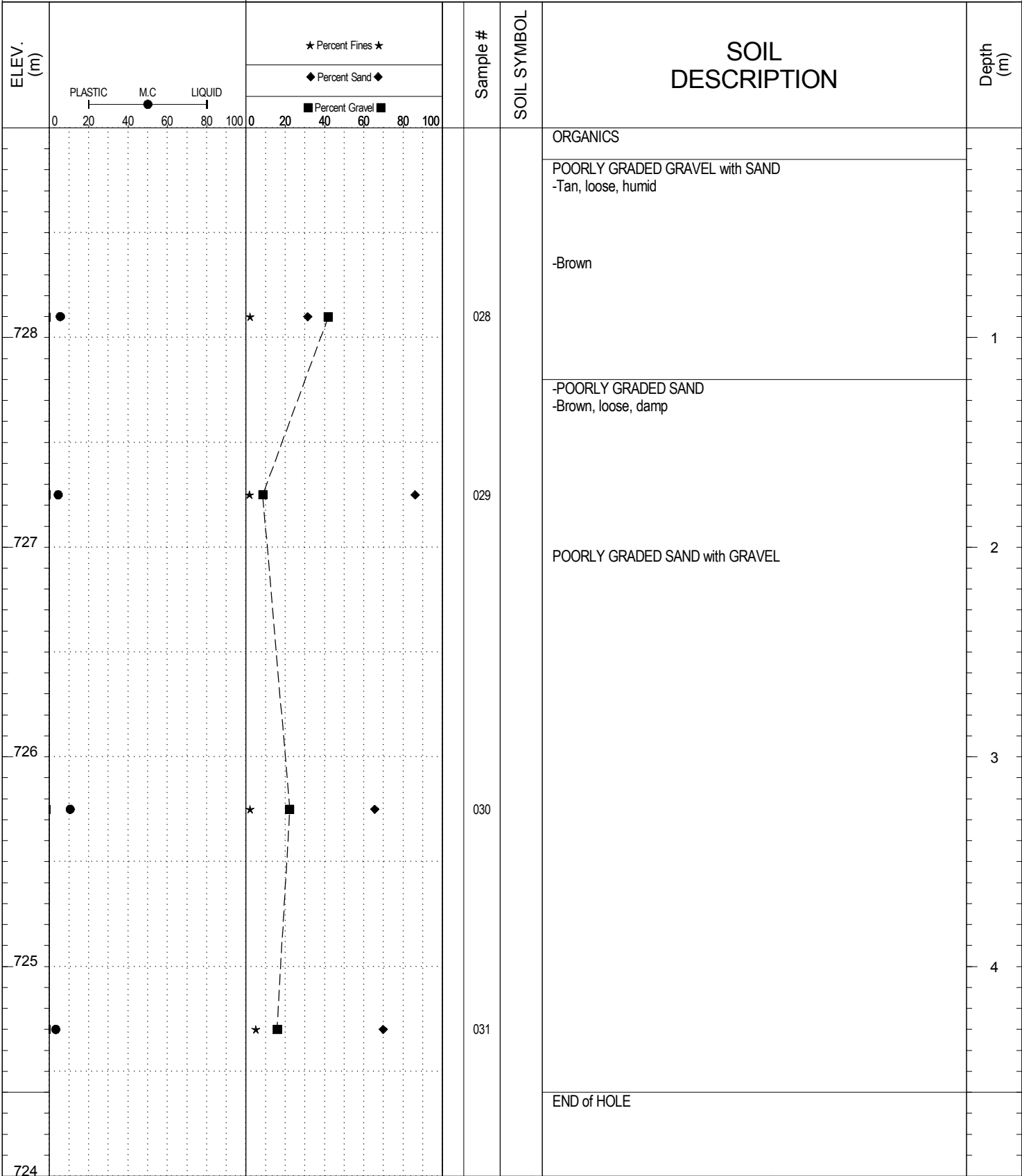


**Highways and Public Works
Transportation Engineering Branch**

LOGGED BY: B.Tyhy	Termination Depth: 4.6m
REVIEWED BY:	Complete: 7/18/2013 10:20:00 AM
PROJECT ENGINEER: M. Idrees	Pit #: 105-C-15 Page 1 of 1

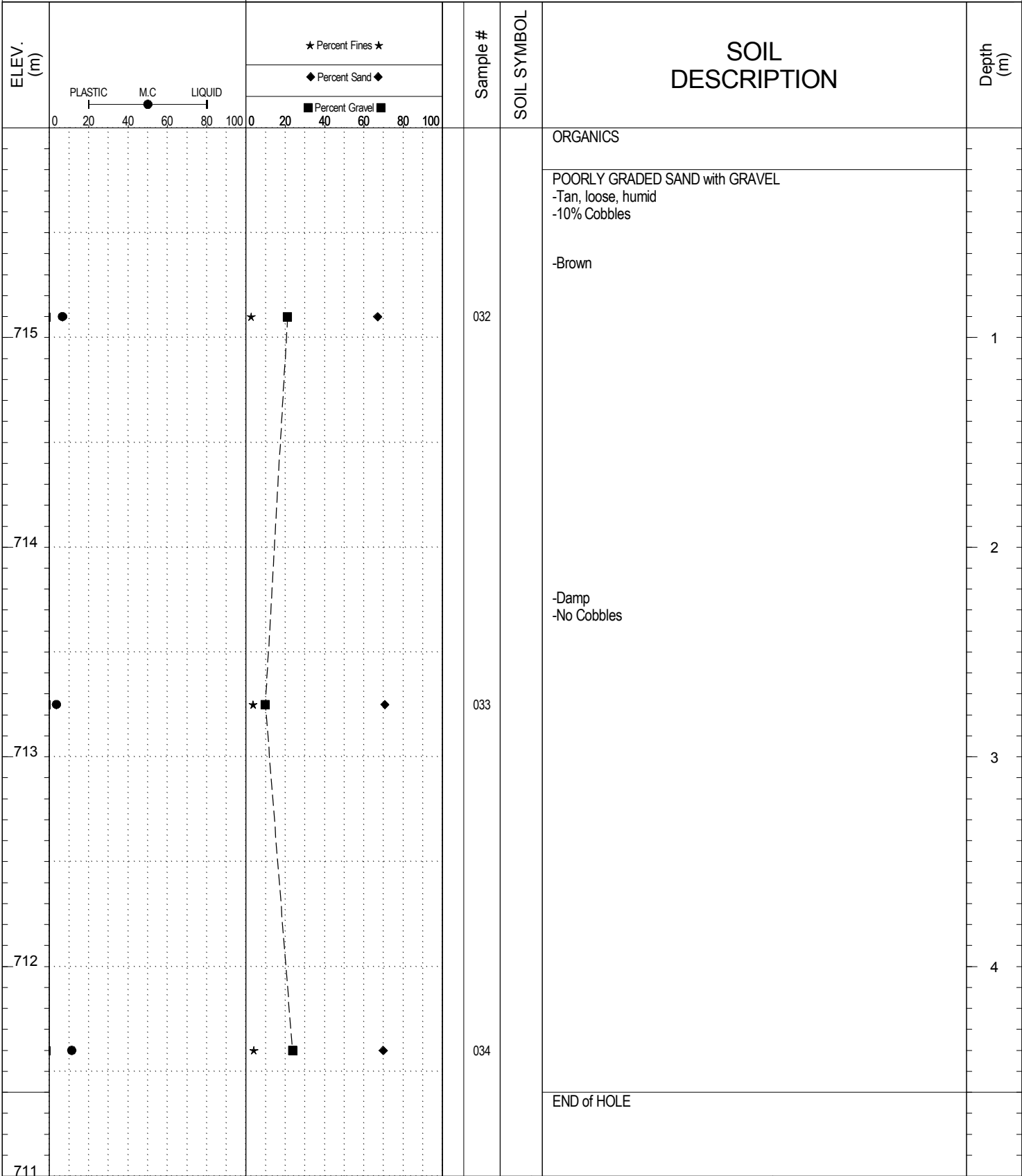
SUBSURFACE EXPLORATION AND TEST REPORT		Ten Mile Creek	SOURCE/TP#: 800-4385
Deadman		Alaska Highway , 105-C-15	PROJECT NO: 552-202101-1001-1-5
Volvo Excavator 210BLC		Coordinates: Z08 N6679763.7m E617020.7m	ELEVATION: 729m

SAMPLE TYPE RETURN UNDISTURBED AUGER BULK TUBE CORE



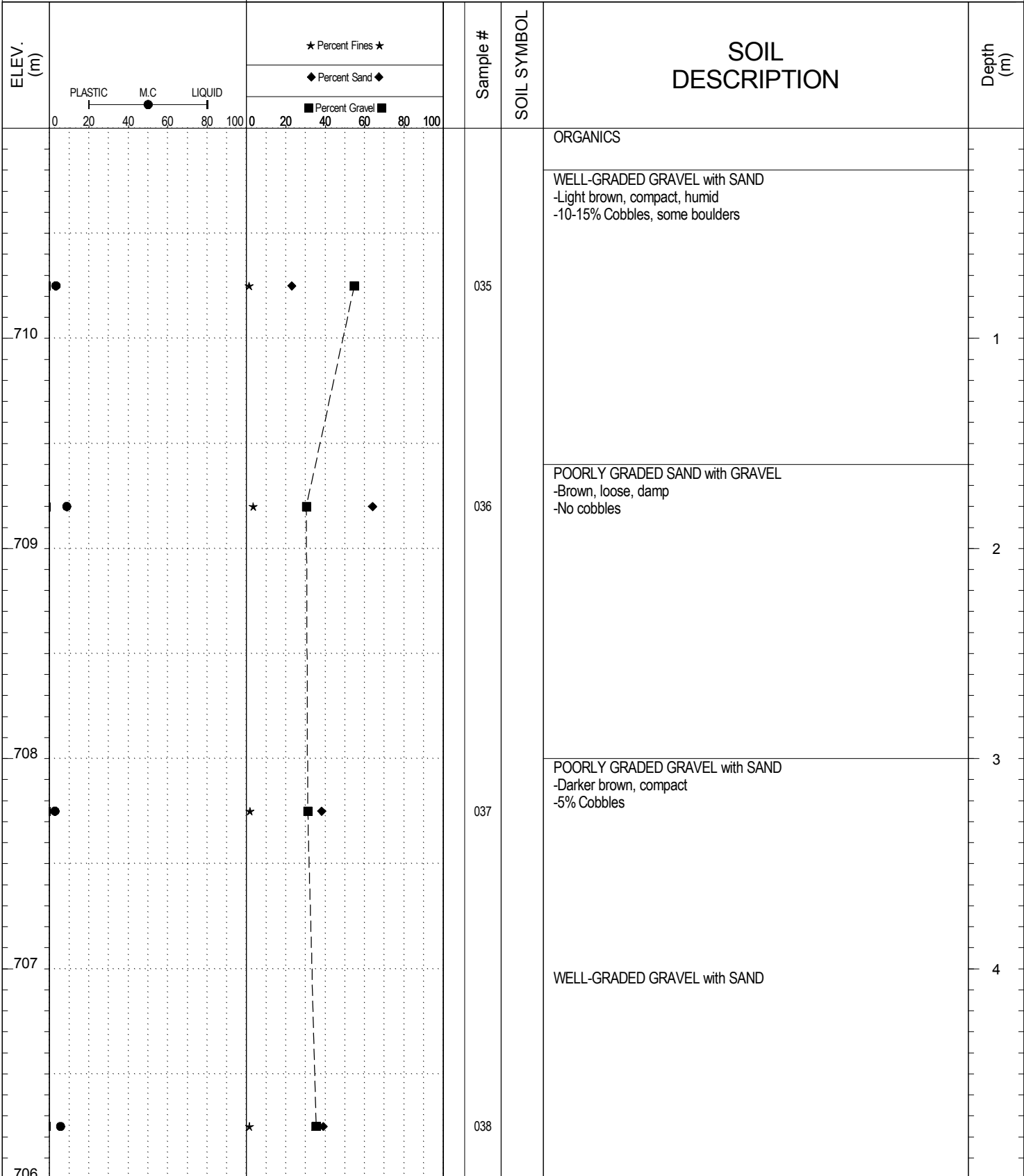
SUBSURFACE EXPLORATION AND TEST REPORT	Ten Mile Creek	SOURCE/TP#: 800-4386
Deadman	Alaska Highway , 105-C-15	PROJECT NO: 552-202101-1001-1-5
Volvo Excavator 210BLC	Coordinates: Z08 N6679641.7m E616749.8m	ELEVATION: 716m

SAMPLE TYPE RETURN UNDISTURBED AUGER BULK TUBE CORE



SUBSURFACE EXPLORATION AND TEST REPORT		Ten Mile Creek	SOURCE/TP#: 800-4387
Deadman		Alaska Highway, , 105-C-15	PROJECT NO: 552-202101-1001-1-5
Volvo Excavator 210BLC		Coordinates: Z08 N6679589.8m E616600m	ELEVATION: 711m

SAMPLE TYPE RETURN UNDISTURBED AUGER BULK TUBE CORE

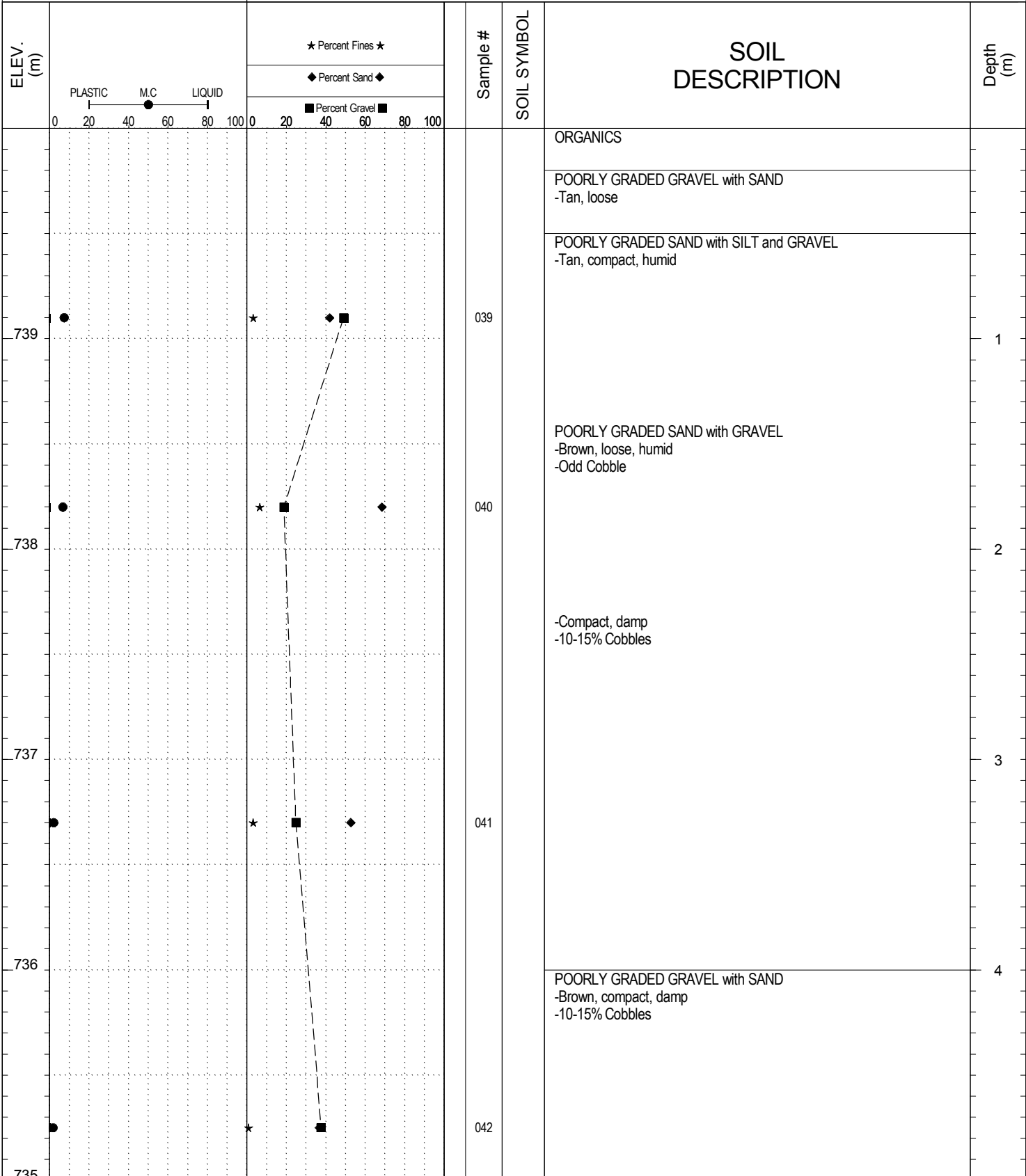


**Highways and Public Works
Transportation Engineering Branch**

LOGGED BY: B.Tyhy	Termination Depth: 5m
REVIEWED BY:	Complete: 7/18/2013 1:15:00 PM
PROJECT ENGINEER: M. Idrees	Pit #: 105-C-15 Page 1 of 2

SUBSURFACE EXPLORATION AND TEST REPORT		Ten Mile Creek	SOURCE/TP#: 800-4388
Deadman		Alaska Highway, , 105-C-15	PROJECT NO: 552-202101-1001-1-5
Volvo Excavator 210BLC		Coordinates: Z08 N6679504m E616419.1m	ELEVATION: 740m

SAMPLE TYPE RETURN UNDISTURBED AUGER BULK TUBE CORE

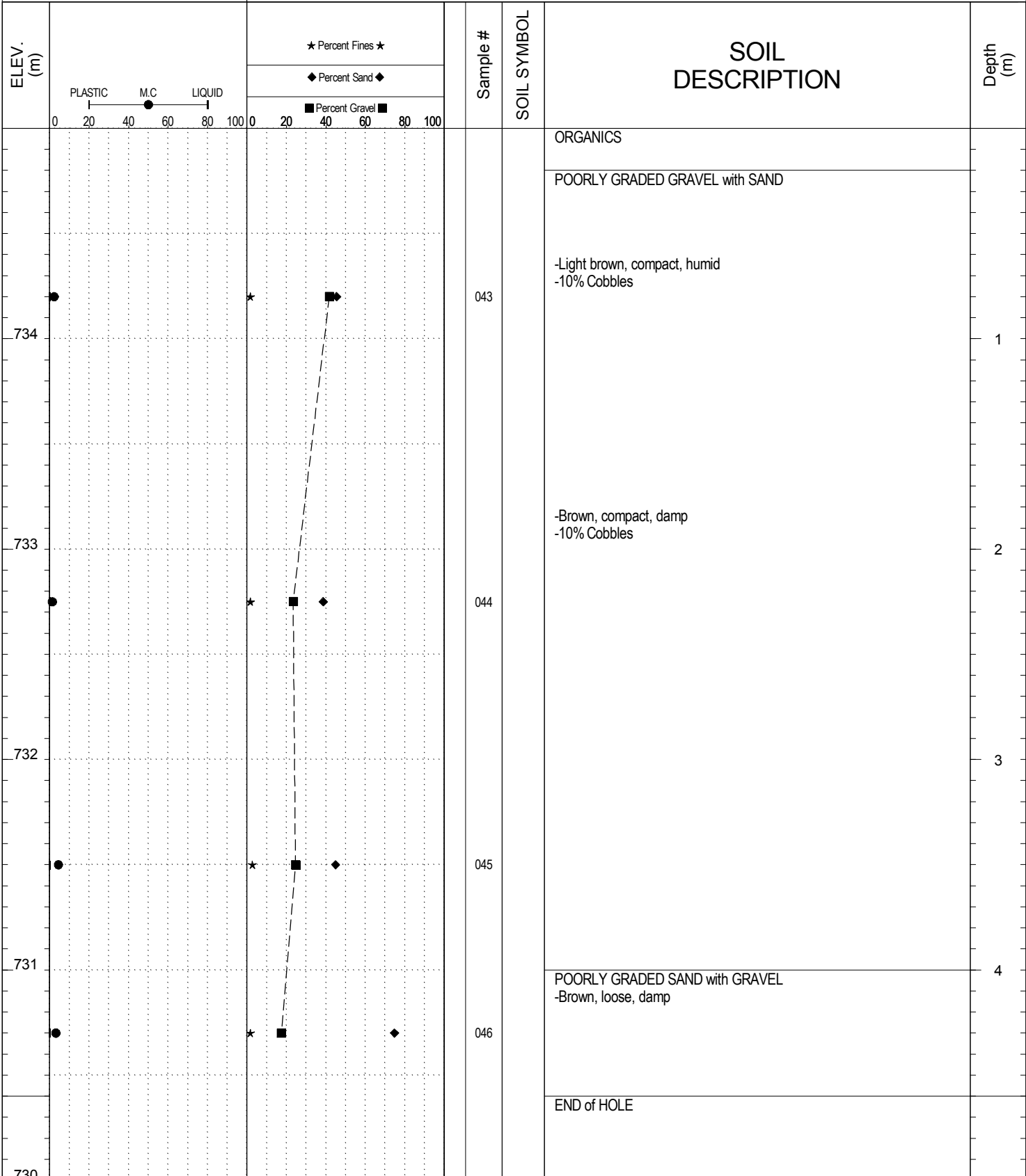


**Highways and Public Works
Transportation Engineering Branch**

LOGGED BY: B.Tyhy	Termination Depth: 5m
REVIEWED BY:	Complete: 7/18/2013 2:40:00 PM
PROJECT ENGINEER: M. Idrees	Pit #: 105-C-15 Page 1 of 2

SUBSURFACE EXPLORATION AND TEST REPORT	Ten Mile Creek	SOURCE/TP#: 800-4389
Deadman	Alaska Highway, , 105-C-15	PROJECT NO: 552-202101-1001-1-5
Volvo Excavator 210BLC	Coordinates: Z08 N6679847.5m E617156.2m	ELEVATION: 735m

SAMPLE TYPE RETURN UNDISTURBED AUGER BULK TUBE CORE

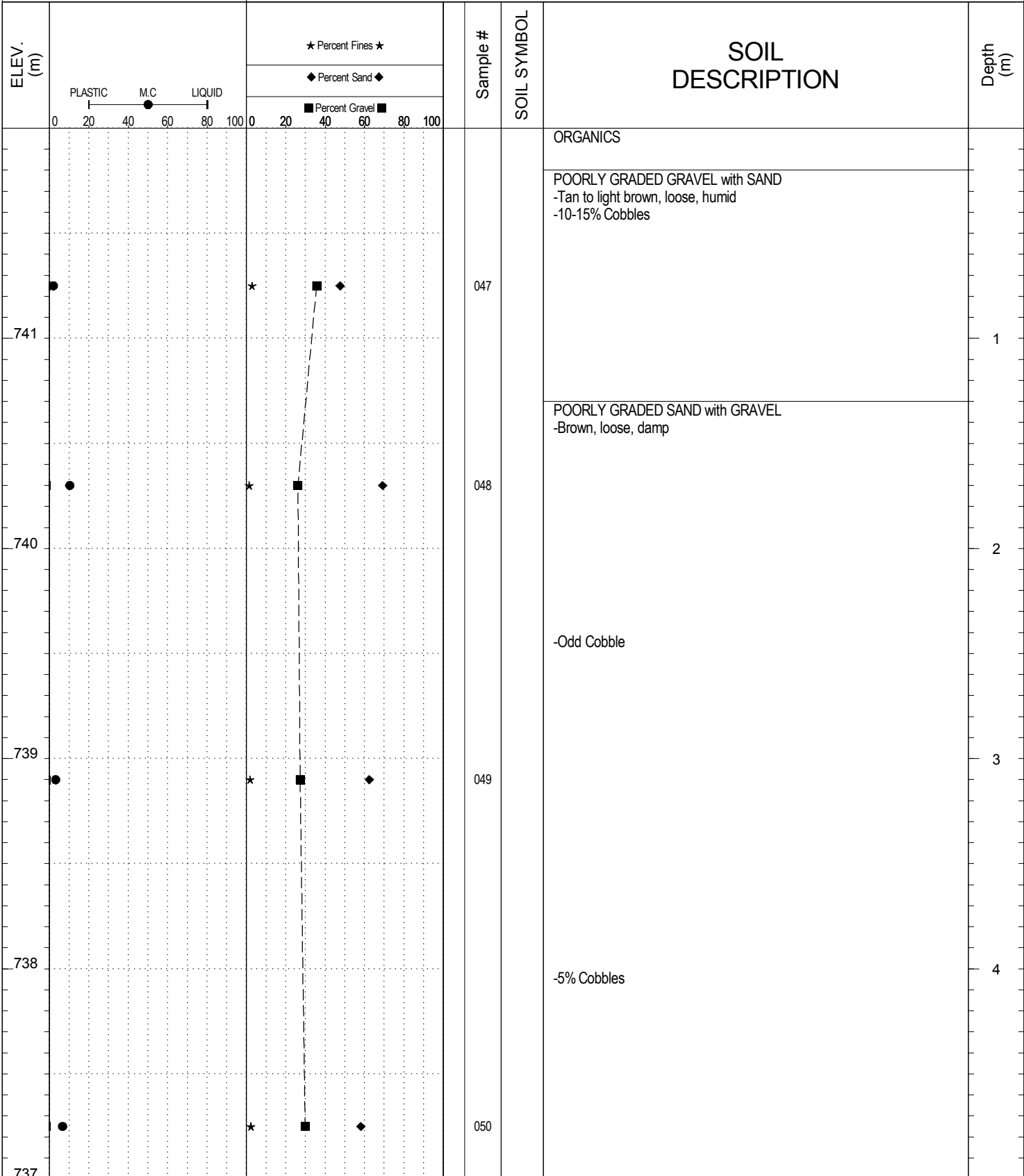


**Highways and Public Works
Transportation Engineering Branch**

LOGGED BY: B.Tyhy	Termination Depth: 4.6m
REVIEWED BY:	Complete: 7/19/2013 10:00:00 AM
PROJECT ENGINEER: M. Idrees	Pit #: 105-C-15 Page 1 of 1

SUBSURFACE EXPLORATION AND TEST REPORT	Ten Mile Creek	SOURCE/TP#: 800-4390
Deadman	Alaska Highway, , 105-C-15	PROJECT NO: 552-202101-1001-1-5
Volvo Excavator 210BLC	Coordinates: Z08 N6679933.7m E617192.8m	ELEVATION: 742m

SAMPLE TYPE RETURN UNDISTURBED AUGER BULK TUBE CORE

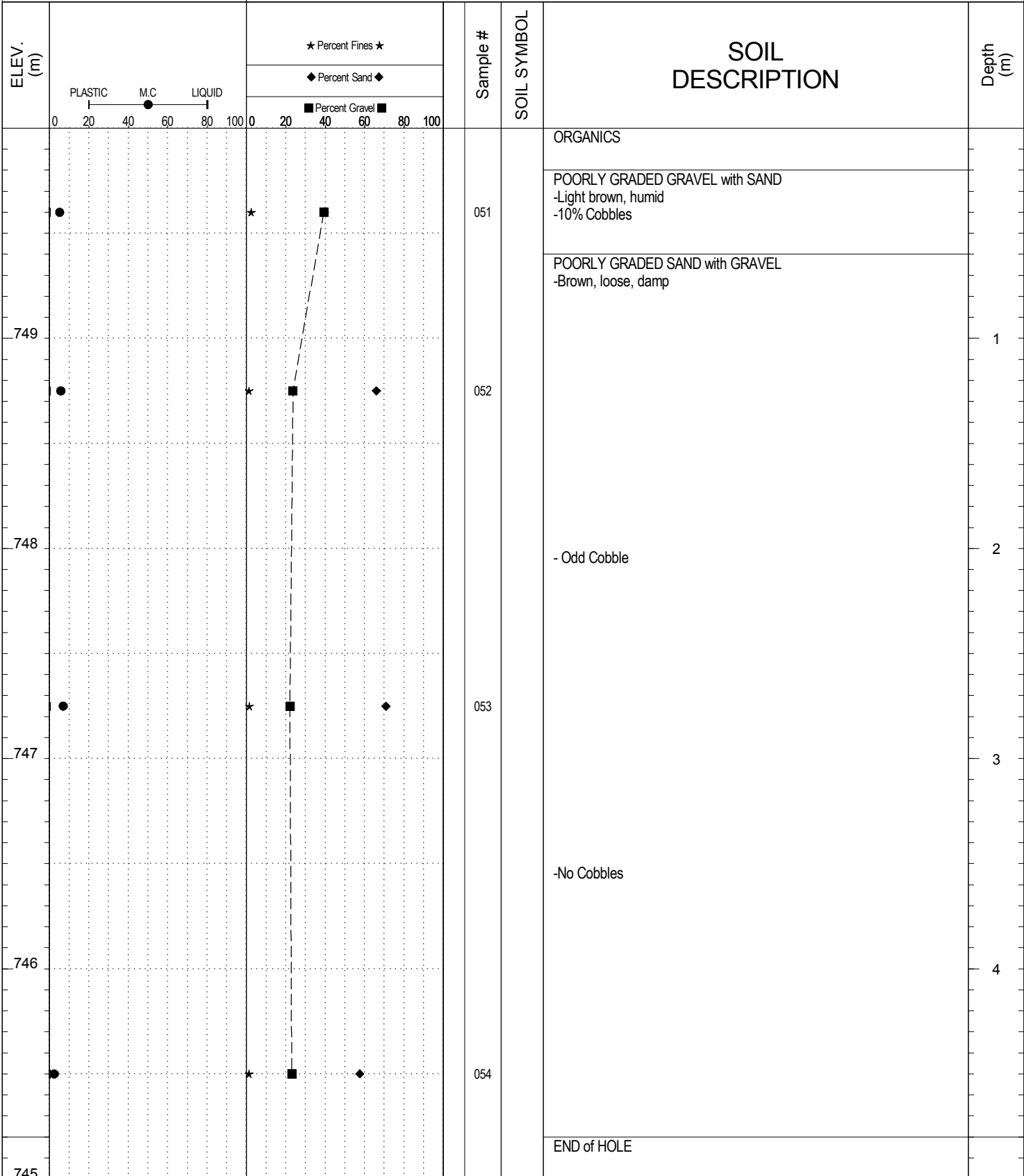


**Highways and Public Works
Transportation Engineering Branch**

LOGGED BY: B.Tyhy	Termination Depth: 5m
REVIEWED BY:	Complete: 7/19/2013 10:50:00 AM
PROJECT ENGINEER: M. Idrees	Pit #: 105-C-15 Page 1 of 2

SUBSURFACE EXPLORATION AND TEST REPORT	Ten Mile Creek	SOURCE/TP#: 800-4391
Deadman	Alaska Highway, , 105-C-15	PROJECT NO: 552-202101-1001-1-5
Volvo Excavator 210BLC	Coordinates: Z08 N6679893.8m E617272.2m	ELEVATION: 750m

SAMPLE TYPE RETURN UNDISTURBED AUGER BULK TUBE CORE

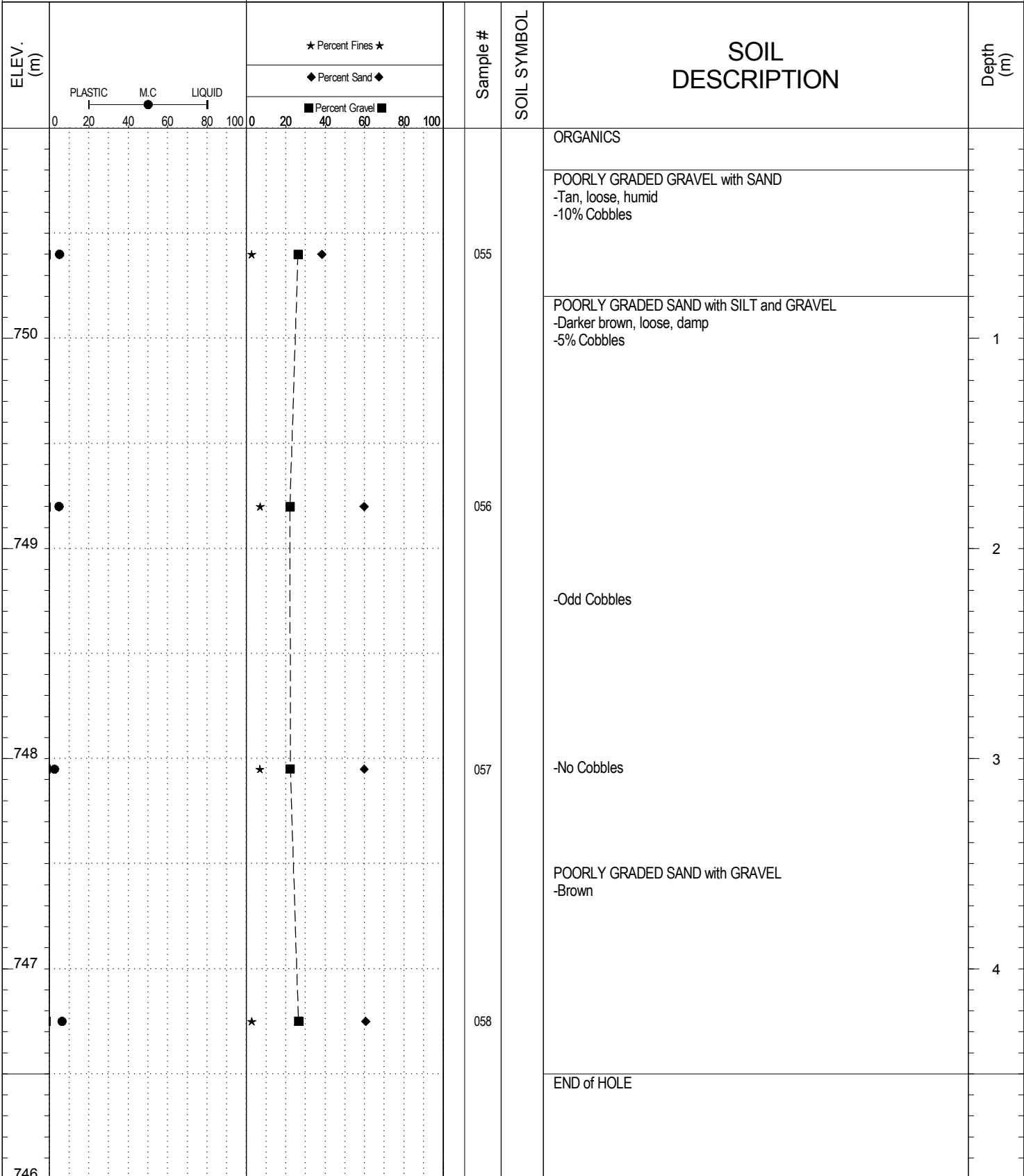


**Highways and Public Works
Transportation Engineering Branch**

LOGGED BY: B.Tyhy	Termination Depth: 4.8m
REVIEWED BY:	Complete: 7/19/2013 11:45:00 AM
PROJECT ENGINEER: M. Idrees	Pit #: 105-C-15 Page 1 of 1

SUBSURFACE EXPLORATION AND TEST REPORT	Ten Mile Creek	SOURCE/TP#: 800-4392
Deadman	Alaska Highway, , 105-C-15	PROJECT NO: 552-202101-1001-1-5
Volvo Excavator 210BLC	Coordinates: Z08 N6679817.9m E617328.9m	ELEVATION: 751m

SAMPLE TYPE RETURN UNDISTURBED AUGER BULK TUBE CORE

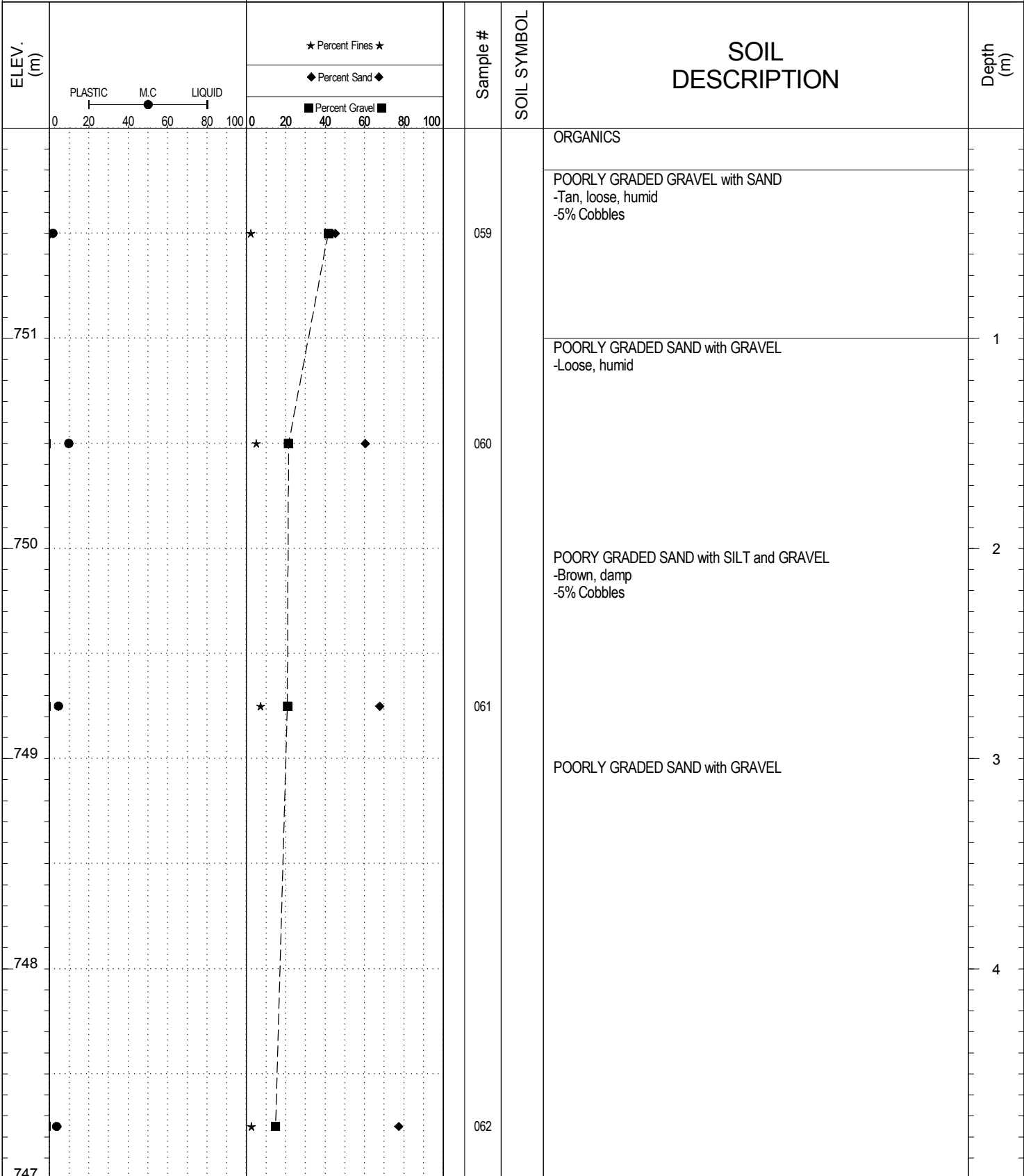


**Highways and Public Works
Transportation Engineering Branch**

LOGGED BY: B.Tyhy	Termination Depth: 4.5m
REVIEWED BY:	Complete: 7/19/2013 12:20:00 PM
PROJECT ENGINEER: M. Idrees	Pit #: 105-C-15 Page 1 of 1

SUBSURFACE EXPLORATION AND TEST REPORT		Ten Mile Creek	SOURCE/TP#: 800-4393
Deadman		Alaska Highway, , 105-C-15	PROJECT NO: 552-202101-1001-1-5
Volvo Excavator 210BLC		Coordinates: Z08 N6679792.3m E617217.9m	ELEVATION: 752m

SAMPLE TYPE RETURN UNDISTURBED AUGER BULK TUBE CORE

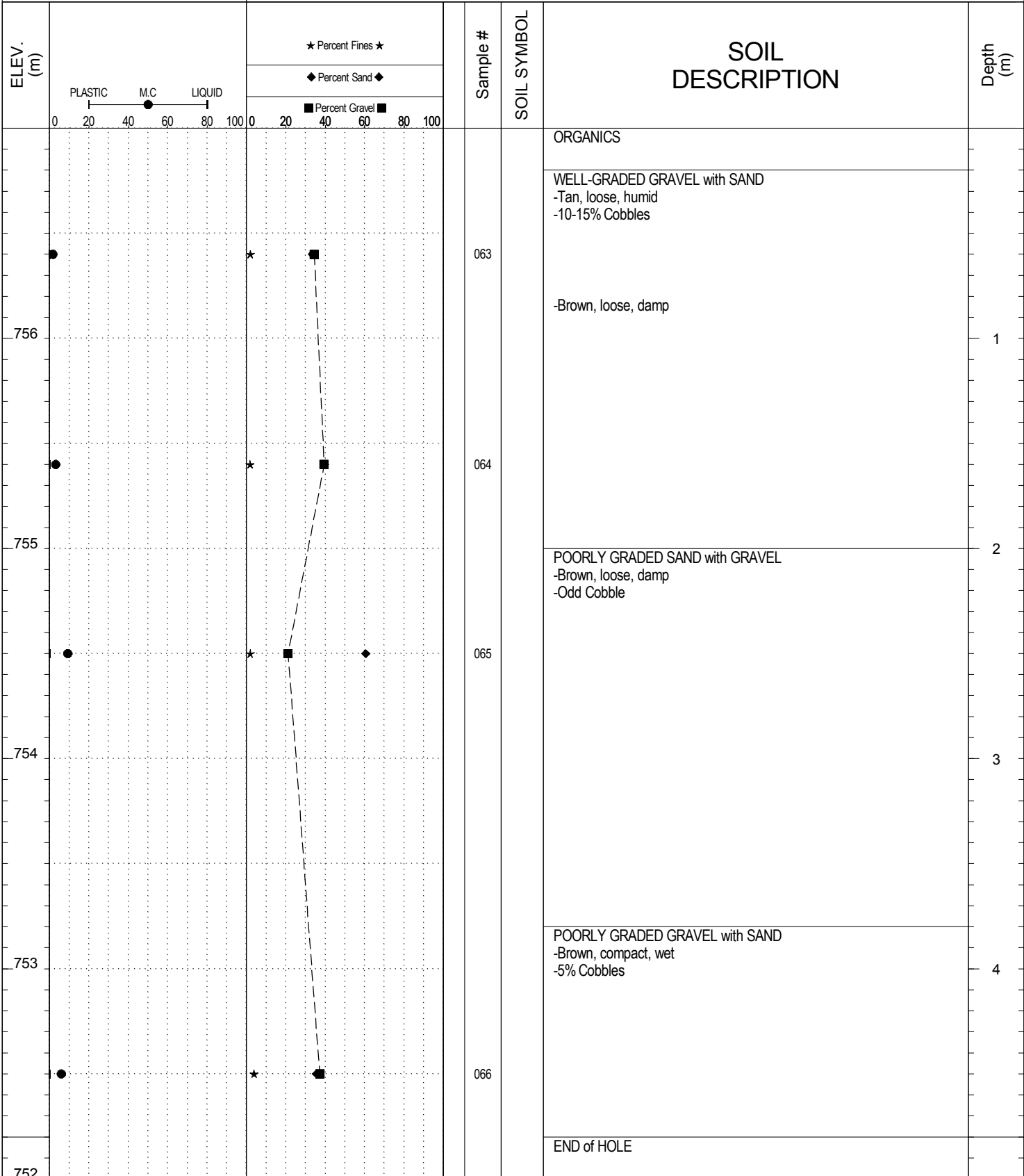


**Highways and Public Works
Transportation Engineering Branch**

LOGGED BY: B.Tyhy	Termination Depth: 5m
REVIEWED BY:	Complete: 7/19/2013 1:10:00 PM
PROJECT ENGINEER: M. Idrees	Pit #: 105-C-15 Page 1 of 2

SUBSURFACE EXPLORATION AND TEST REPORT		Ten Mile Creek	SOURCE/TP#: 800-4394
Deadman		Alaska Highway, , 105-C-15	PROJECT NO: 552-202101-1001-1-5
Volvo Excavator 210BLC		Coordinates: Z08 N6679760.8m E617135.9m	ELEVATION: 757m

SAMPLE TYPE RETURN UNDISTURBED AUGER BULK TUBE CORE

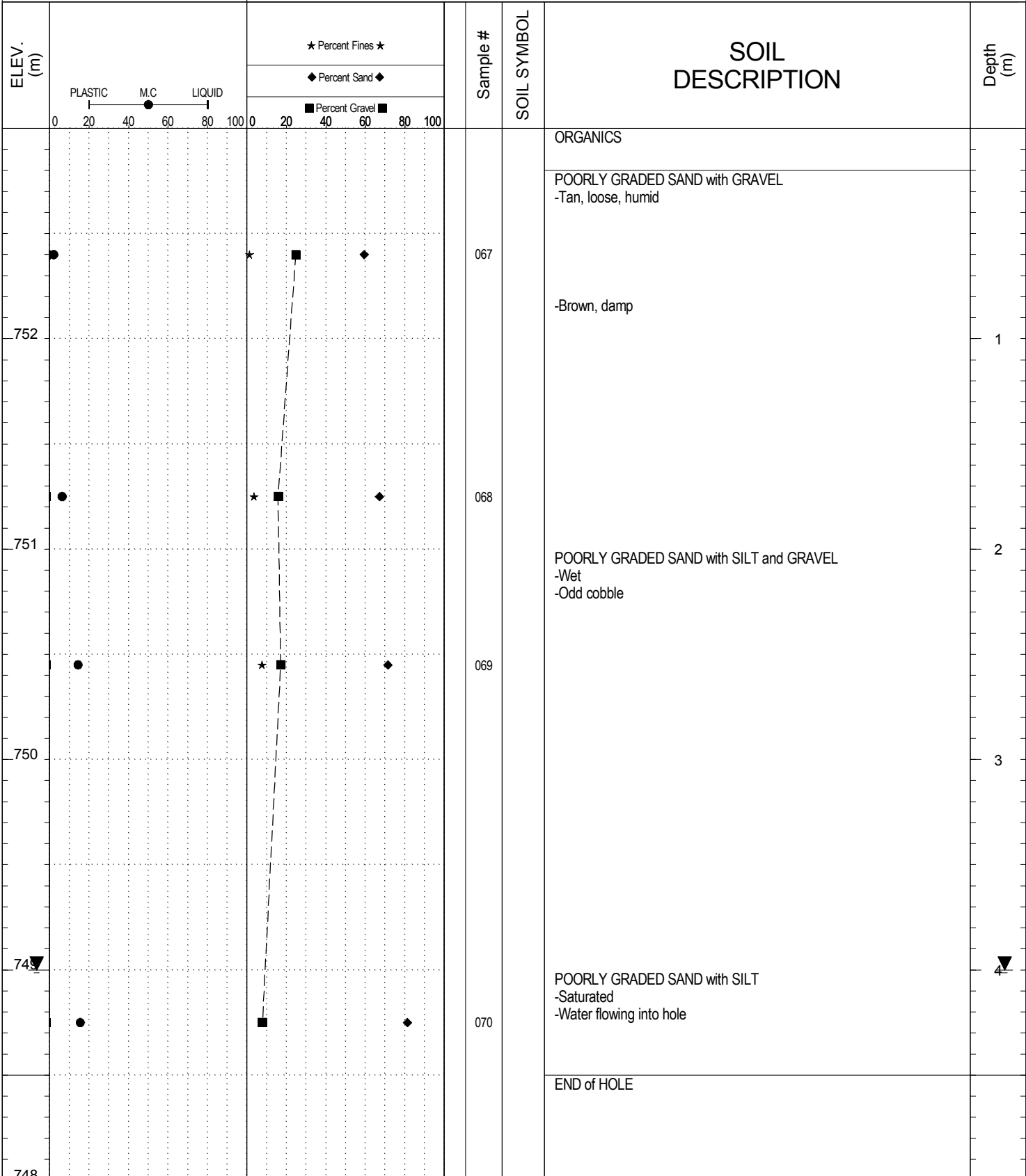


**Highways and Public Works
Transportation Engineering Branch**

LOGGED BY: B.Tyhy	Termination Depth: 4.8m
REVIEWED BY:	Complete: 7/19/2013 2:10:00 PM
PROJECT ENGINEER: M. Idrees	Pit #: 105-C-15 Page 1 of 1

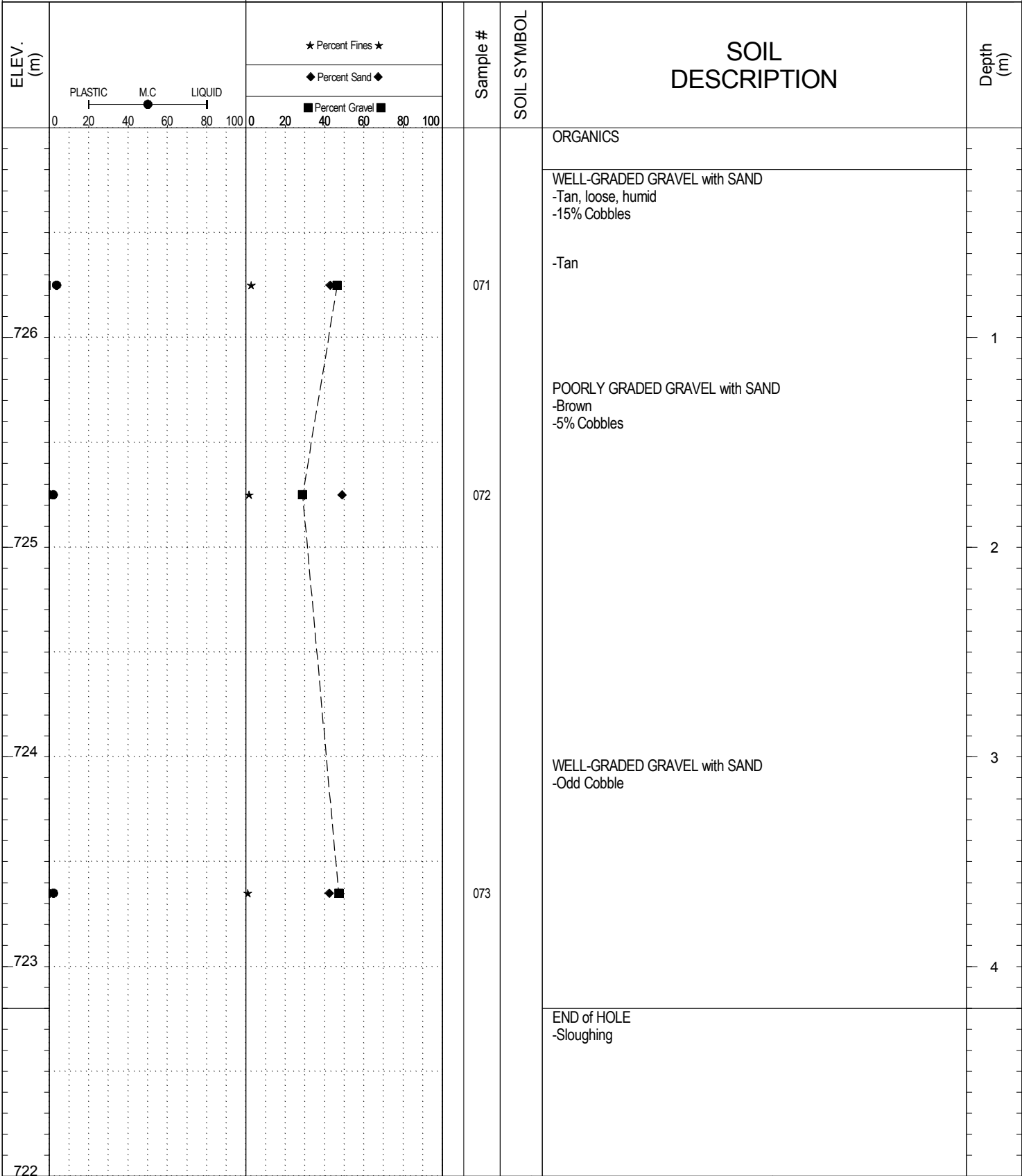
SUBSURFACE EXPLORATION AND TEST REPORT	Ten Mile Creek	SOURCE/TP#: 800-4395
Deadman	Alaska Highway, , 105-C-15	PROJECT NO: 552-202101-1001-1-5
Volvo Excavator 210BLC	Coordinates: Z08 N6679651.9m E617088.7m	ELEVATION: 753m

SAMPLE TYPE RETURN UNDISTURBED AUGER BULK TUBE CORE



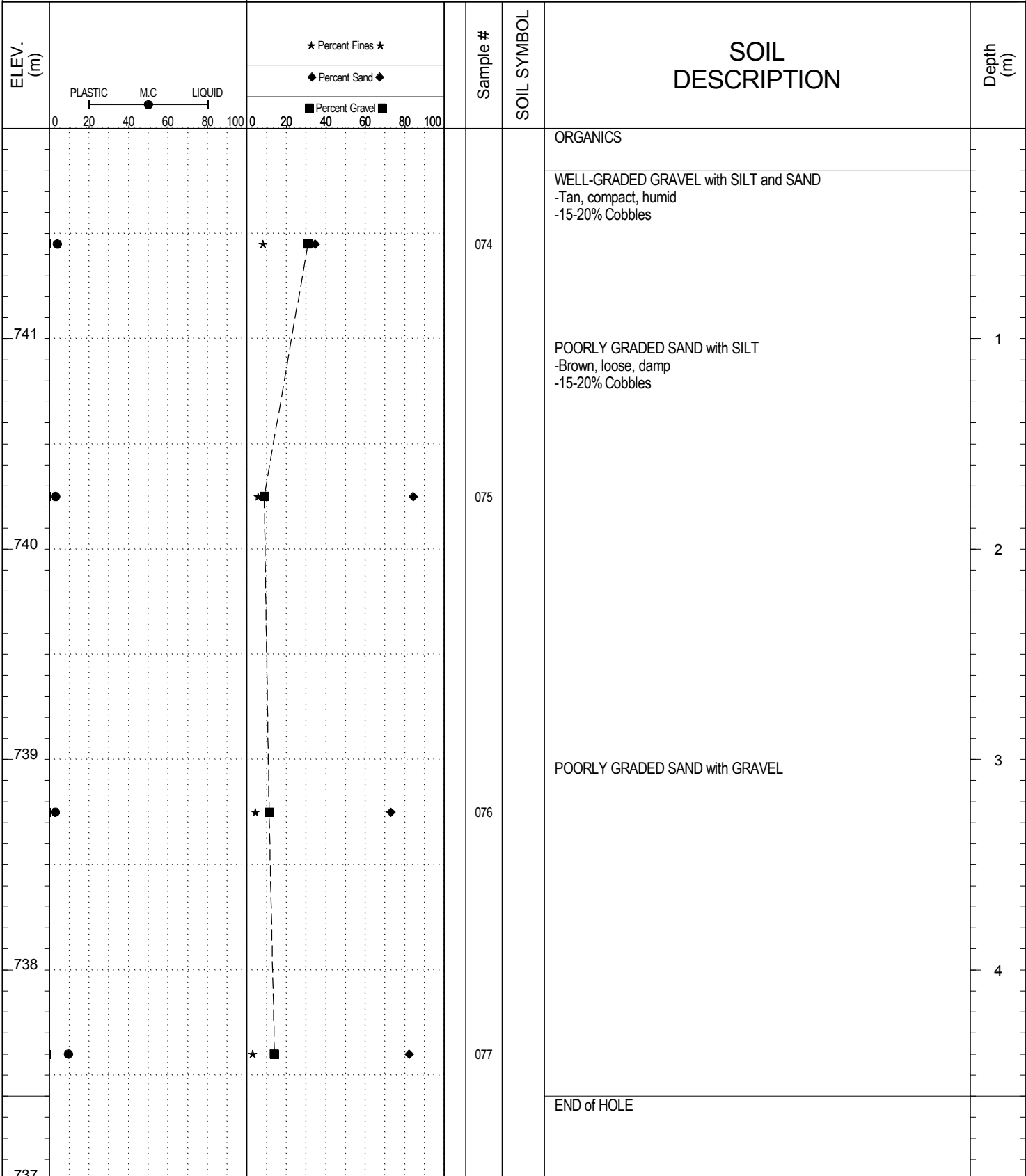
SUBSURFACE EXPLORATION AND TEST REPORT	Ten Mile Creek	SOURCE/TP#: 800-4396
Deadman	Alaska Highway, , 105-C-15	PROJECT NO: 552-202101-1001-1-5
Volvo Excavator 210BLC	Coordinates: Z08 N6679763.7m E617020.8m	ELEVATION: 727m

SAMPLE TYPE RETURN UNDISTURBED AUGER BULK TUBE CORE



SUBSURFACE EXPLORATION AND TEST REPORT	Ten Mile Creek	SOURCE/TP#: 800-4397
Deadman	Alaska Highway, , 105-C-15	PROJECT NO: 552-202101-1001-1-5
Volvo Excavator 210BLC	Coordinates: Z08 N6679577.2m E616498.5m	ELEVATION: 742m

SAMPLE TYPE RETURN UNDISTURBED AUGER BULK TUBE CORE

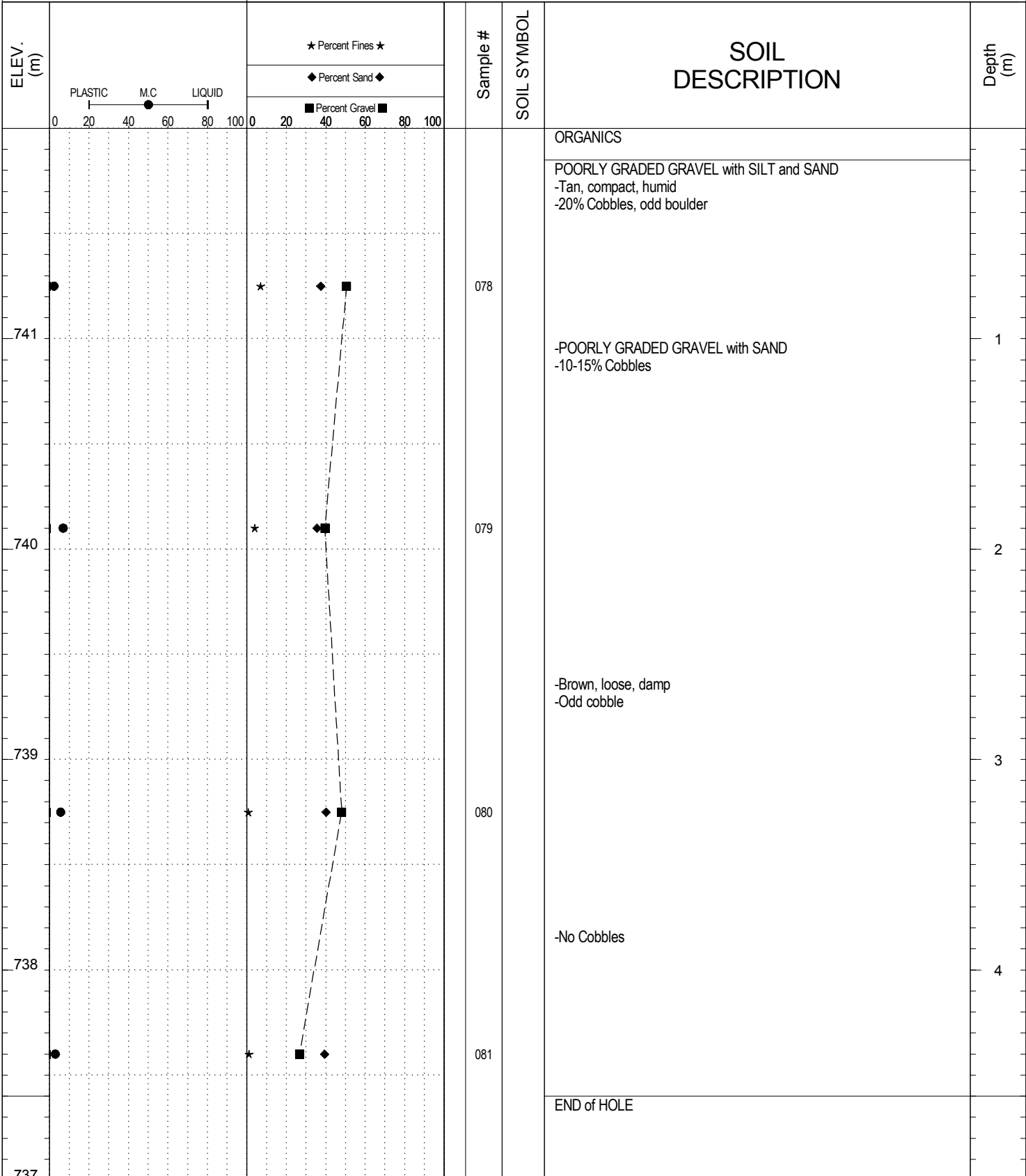


**Highways and Public Works
Transportation Engineering Branch**

LOGGED BY: B.Tyhy	Termination Depth: 4.6m
REVIEWED BY:	Complete: 7/19/2013 5:10:00 PM
PROJECT ENGINEER: M. Idrees	Pit #: 105-C-15 Page 1 of 1

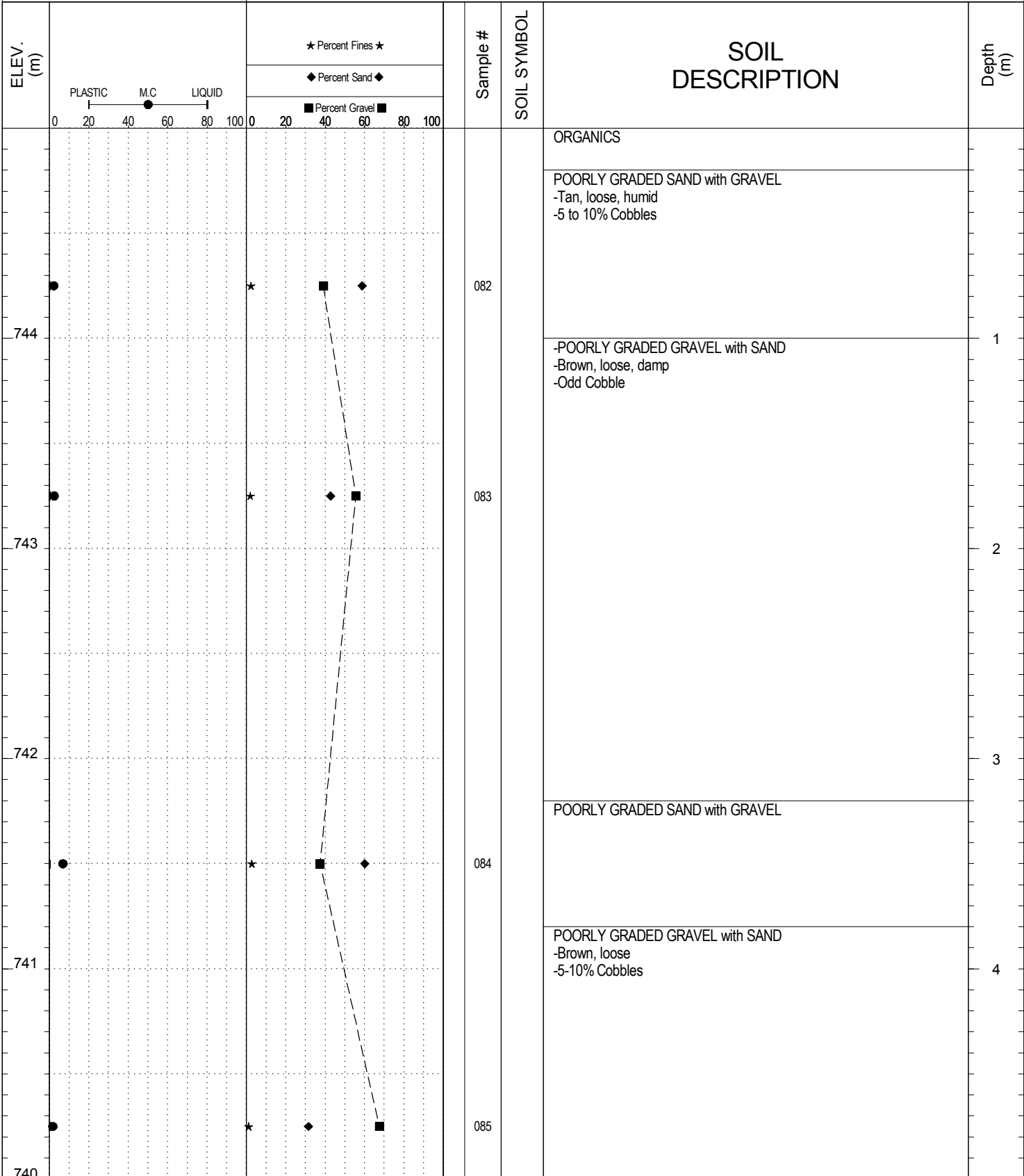
SUBSURFACE EXPLORATION AND TEST REPORT	Ten Mile Creek	SOURCE/TP#: 800-4398
Deadman	Alaska Highway, , 105-C-15	PROJECT NO: 552-202101-1001-1-5
Volvo Excavator 210BLC	Coordinates: Z08 N6679525.9m E616512.1m	ELEVATION: 742m

SAMPLE TYPE RETURN UNDISTURBED AUGER BULK TUBE CORE



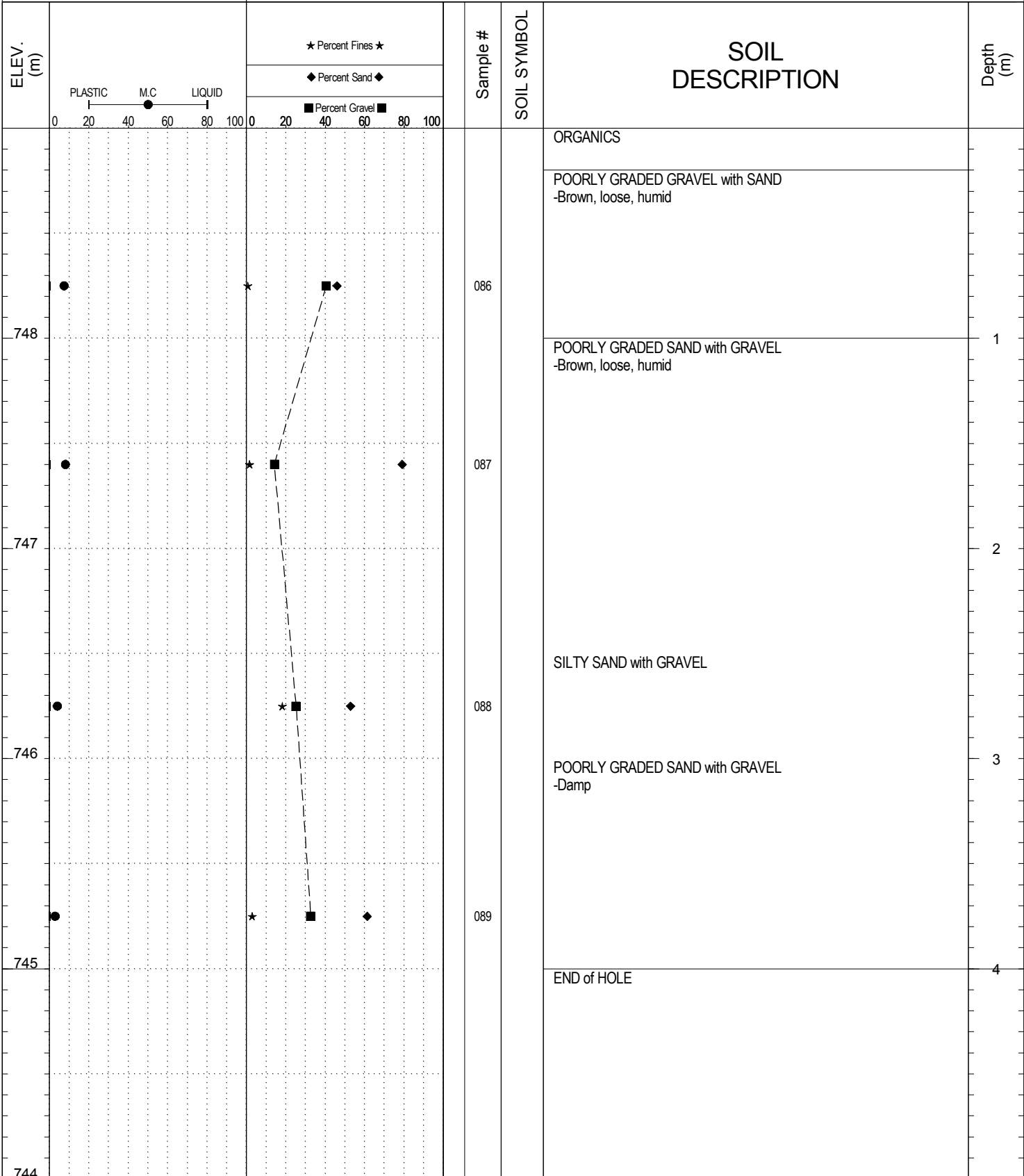
SUBSURFACE EXPLORATION AND TEST REPORT		Ten Mile Creek	SOURCE/TP#: 800-4399
Deadman		Alaska Highway, , 105-C-15	PROJECT NO: 552-202101-1001-1-5
Volvo Excavator 210BLC		Coordinates: Z08 N6679522m E616597.4m	ELEVATION: 745m

SAMPLE TYPE RETURN UNDISTURBED AUGER BULK TUBE CORE



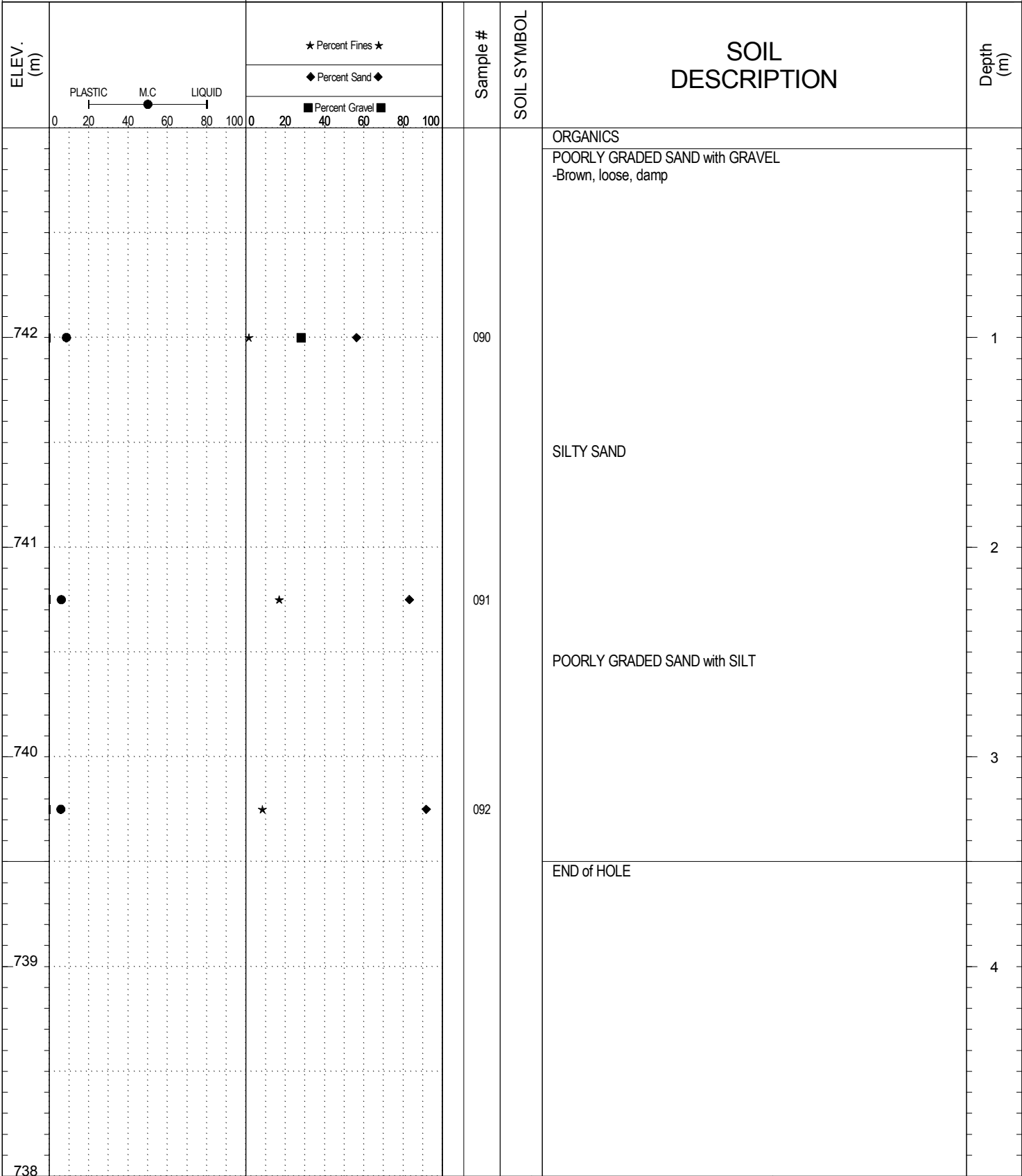
SUBSURFACE EXPLORATION AND TEST REPORT	Ten Mile Creek	SOURCE/TP#: 800-4440
Deadman	Alaska Highway, , 105-C-15	PROJECT NO: 552-202101-1001-1-5
Volvo Excavator 210BLC	Coordinates: Z08 N6679318.6m E616114.3m	ELEVATION: 749m

SAMPLE TYPE RETURN UNDISTURBED AUGER BULK TUBE CORE



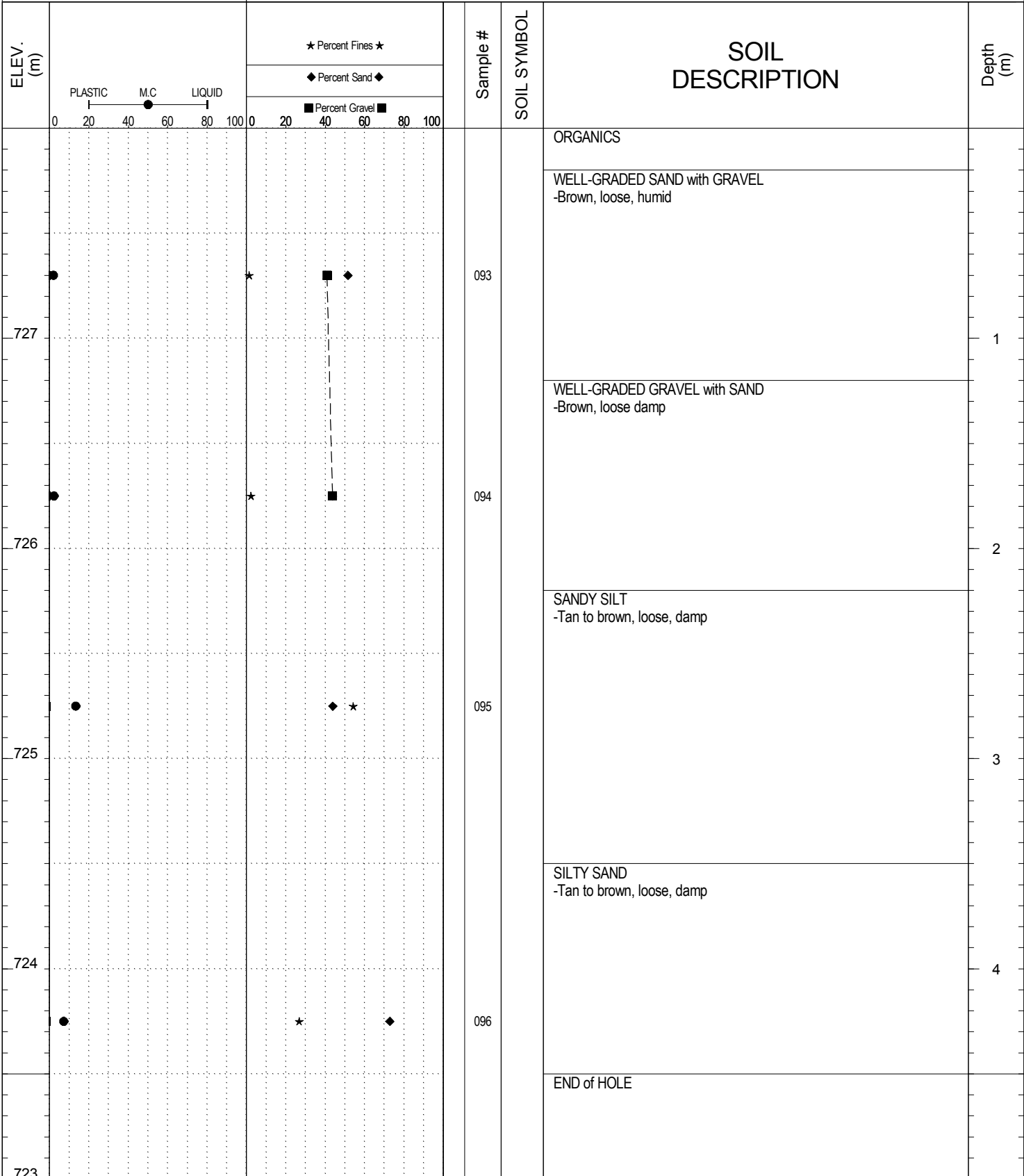
SUBSURFACE EXPLORATION AND TEST REPORT		Ten Mile Creek	SOURCE/TP#: 800-4441
Deadman		Alaska Highway, , 105-C-15	PROJECT NO: 552-202101-1001-1-5
Volvo Excavator 210BLC		Coordinates: Z08 N6679225.6m E615964.6m	ELEVATION: 743m

SAMPLE TYPE RETURN UNDISTURBED AUGER BULK TUBE CORE



SUBSURFACE EXPLORATION AND TEST REPORT	Ten Mile Creek	SOURCE/TP#: 800-4442
Deadman	Alaska Highway, , 105-C-15	PROJECT NO: 552-202101-1001-1-5
Volvo Excavator 210BLC	Coordinates: Z08 N6679178.2m E615965.4m	ELEVATION: 728m

SAMPLE TYPE RETURN UNDISTURBED AUGER BULK TUBE CORE

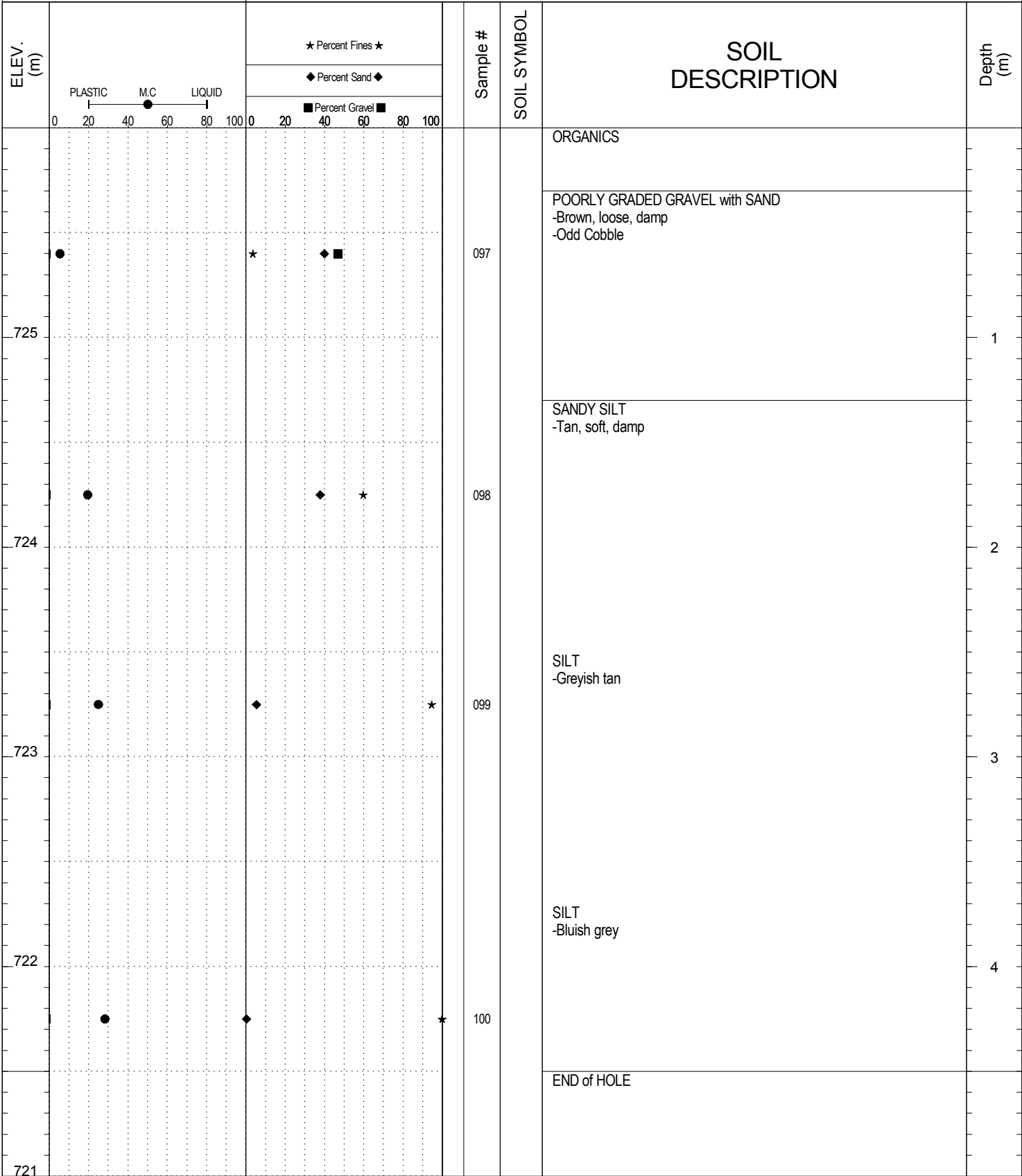


Highways and Public Works
Transportation Engineering Branch

LOGGED BY: B.Tyhy	Termination Depth: 4.5m
REVIEWED BY:	Complete: 7/20/2013 12:50:00 PM
PROJECT ENGINEER: M. Idrees	Pit #: 105-C-15 Page 1 of 1

SUBSURFACE EXPLORATION AND TEST REPORT		Ten Mile Creek	SOURCE/TP#: 800-4443
Deadman		Alaska Highway, , 105-C-15	PROJECT NO: 552-202101-1001-1-5
Volvo Excavator 210BLC		Coordinates: Z08 N6679173.1m E615909.4m	ELEVATION: 726m

SAMPLE TYPE RETURN UNDISTURBED AUGER BULK TUBE CORE



SUBSURFACE EXPLORATION AND TEST REPORT		Ten Mile Creek	SOURCE/TP#: 800-4444
Deadman		Alaska Highway, , 105-C-15	PROJECT NO: 552-202101-1001-1-5
Volvo Excavator 210BLC		Coordinates: Z08 N6679095.6m E615930.7m	ELEVATION: 717m

SAMPLE TYPE RETURN UNDISTURBED AUGER BULK TUBE CORE

