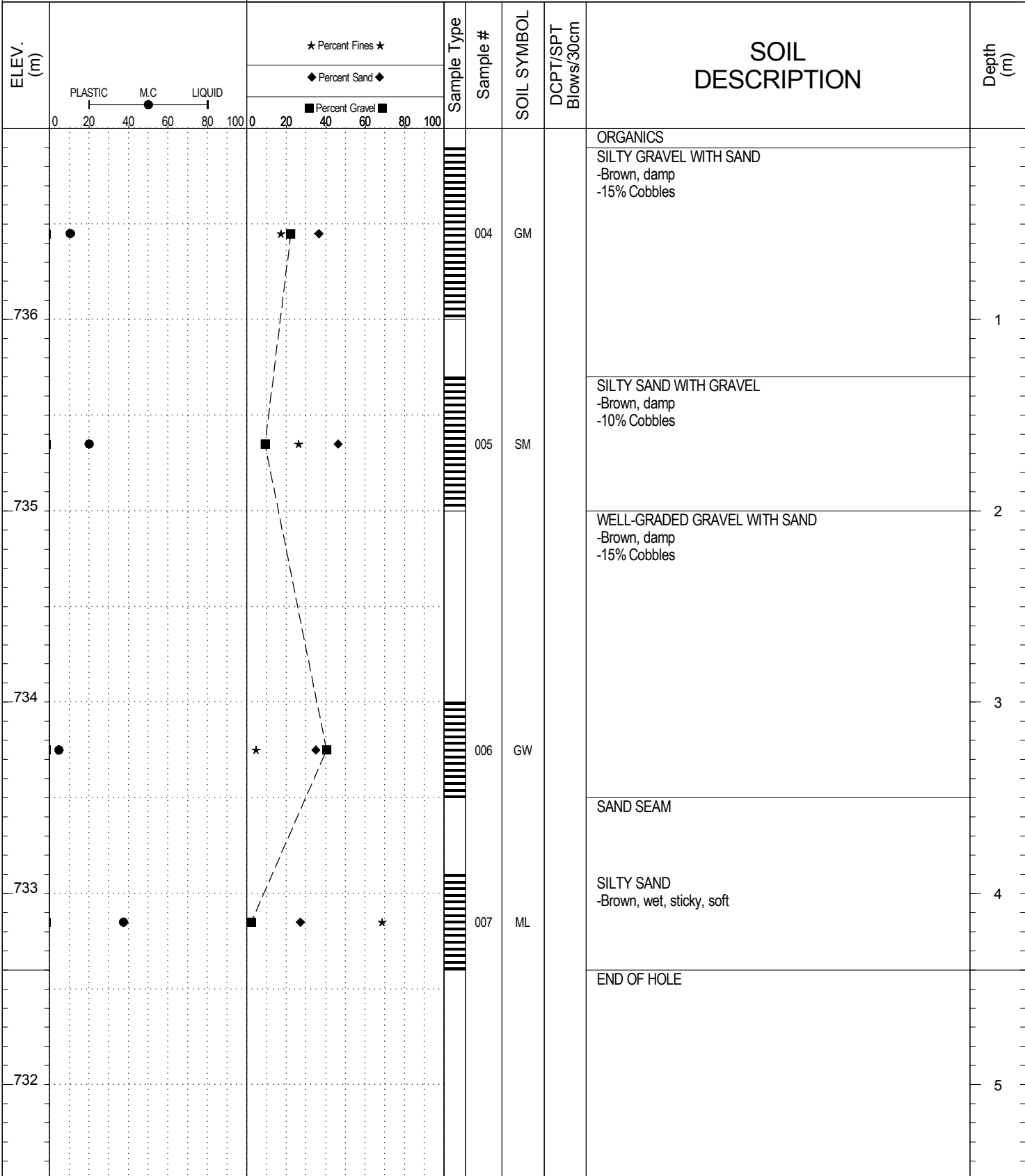
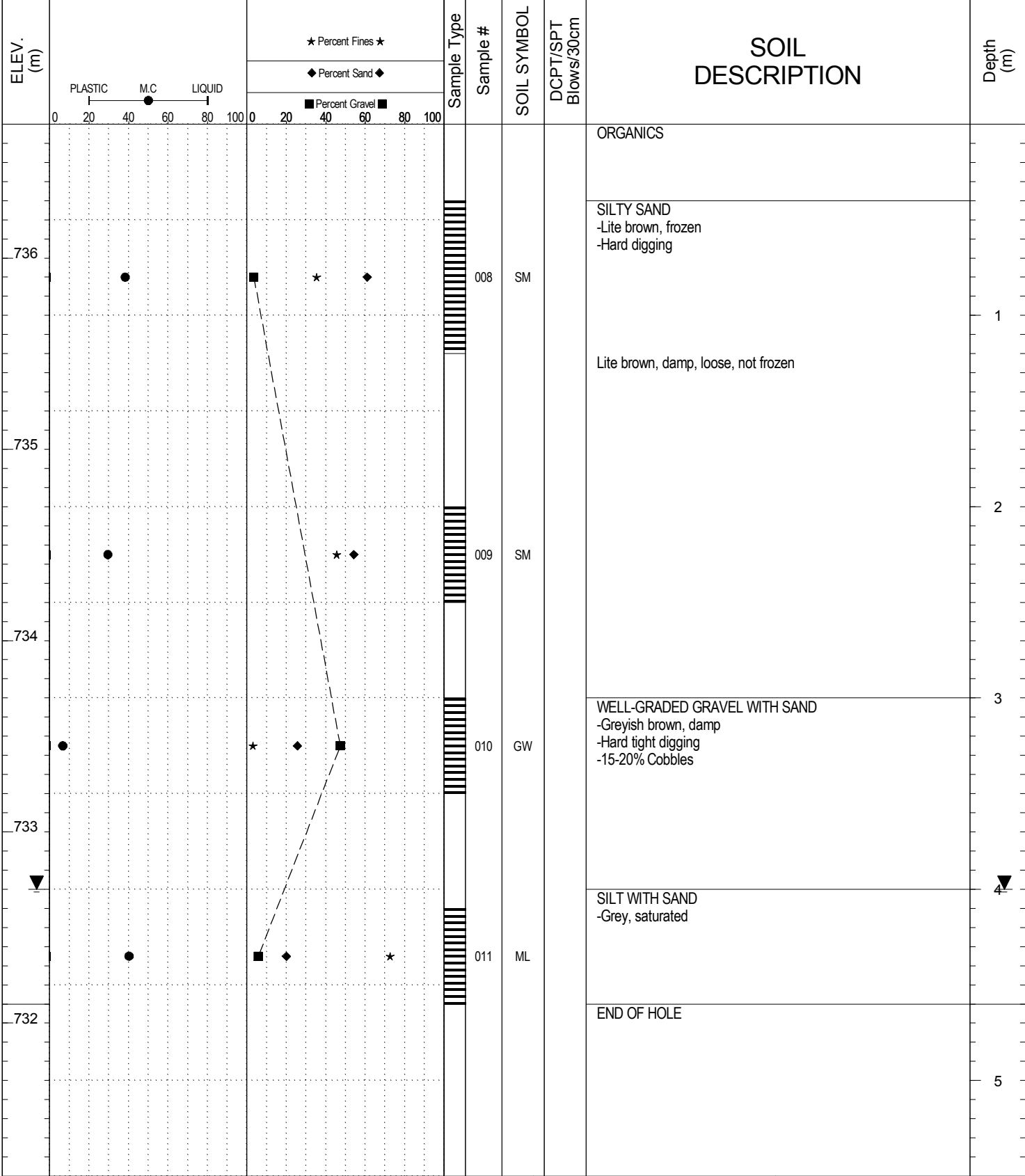


SUBSURFACE EXPLORATION AND TEST REPORT		Alaska Hwy		SOURCE/TP#: 804-4424					
Far West Holdings		Edith Creek Exploration, km 1782.5,		PROJECT NO: 552-202101-1001 1-4					
CAT Excavator 315C		Coordinates: Z07 N6852429m E550321.9m		ELEVATION: 731m					
SAMPLE TYPE		<input checked="" type="checkbox"/> RETURN	<input type="checkbox"/> SPLIT SPOON	<input type="checkbox"/> AUGER	<input type="checkbox"/> BULK	<input checked="" type="checkbox"/> SPT	<input type="checkbox"/> CORE		
ELEV. (m)	PLASTIC M.C LIQUID 0 20 40 60 80 100			Sample Type	Sample #	SOIL SYMBOL	DCPT/SPT Blows/30cm	SOIL DESCRIPTION	Depth (m)
	★ Percent Fines ★	◆ Percent Sand ◆	■ Percent Gravel ■						
730					001	SP-SM		ORGANICS	1
729					002	SP-SM		POORLY GRADED SAND WITH SILT -Lite brown, damp	2
728					003	SP		Brown, loose, frozen	3
727								POORLY GRADED SAND WITH GRAVEL -Saturated -Failing	4
726								END OF HOLE	5
		LOGGED BY: B.Tyhy				Termination Depth: 3.5m			
		REVIEWED BY:				Complete: 7/3/2013 10:55:00 AM			
		PROJECT ENGINEER: M.Idrees				Pit #: 115-F-03 Page 1 of 1			

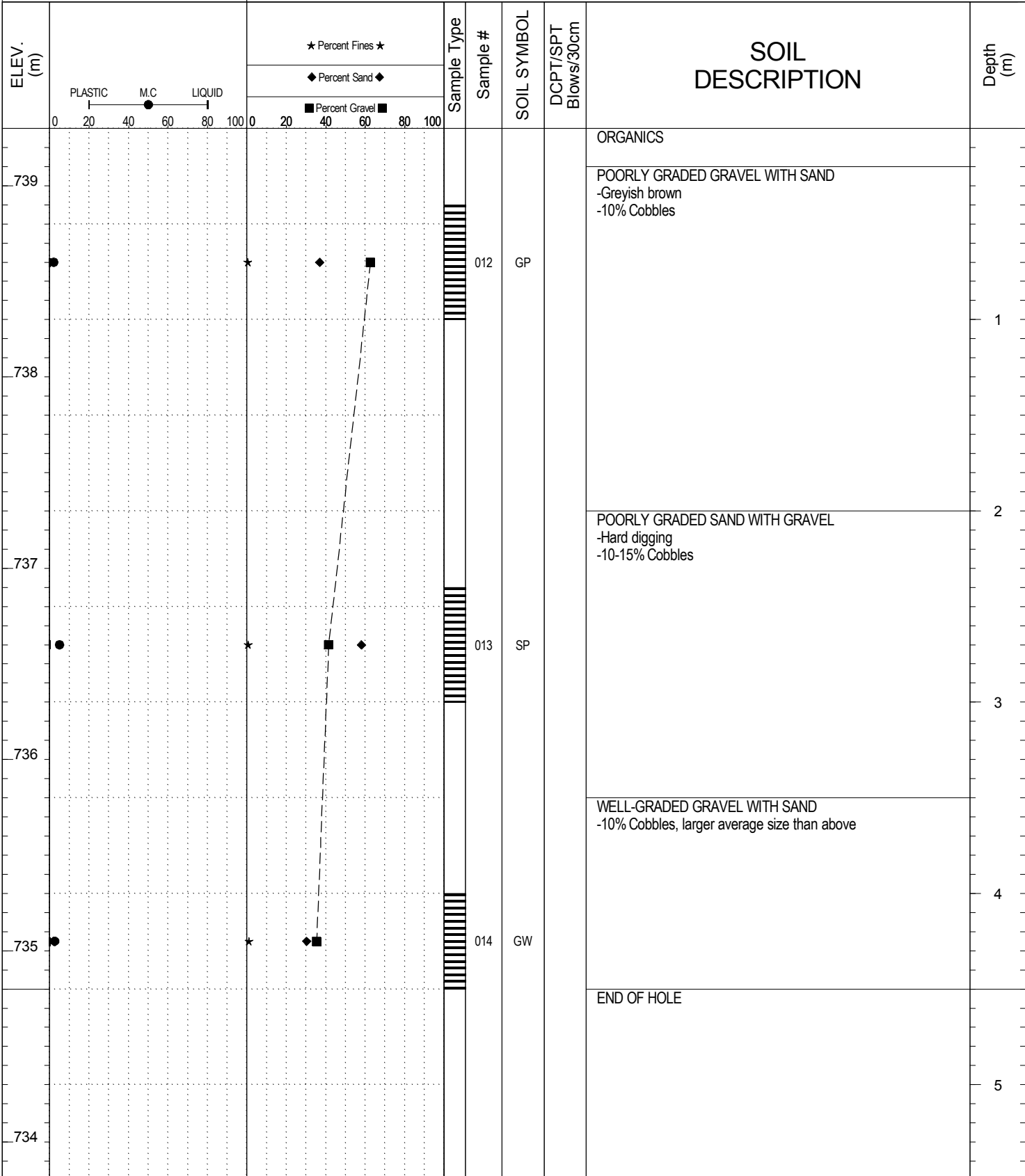
SAMPLE TYPE RETURN SPLIT SPOON AUGER BULK SPT CORE



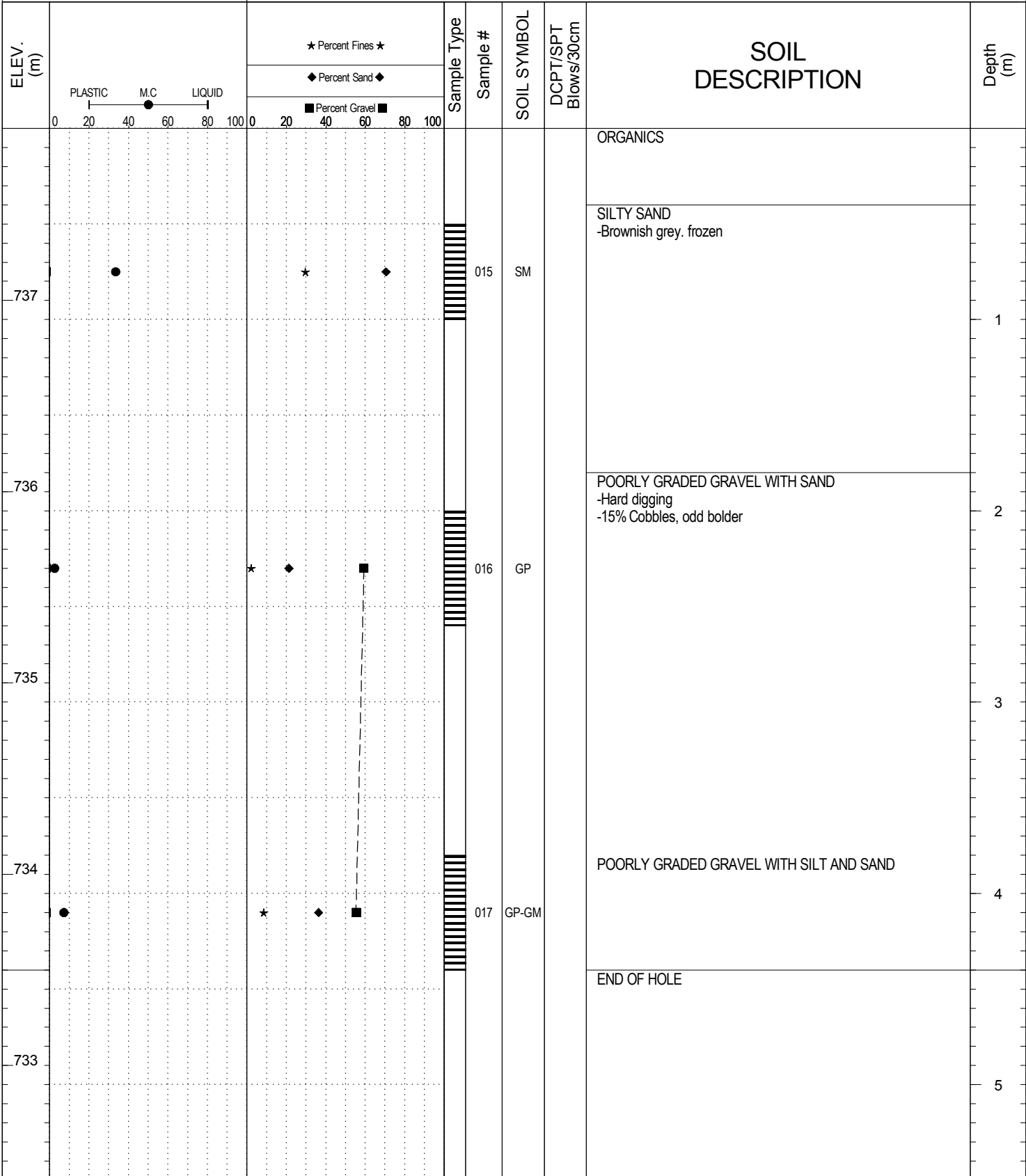
SAMPLE TYPE RETURN SPLIT SPOON AUGER BULK SPT CORE



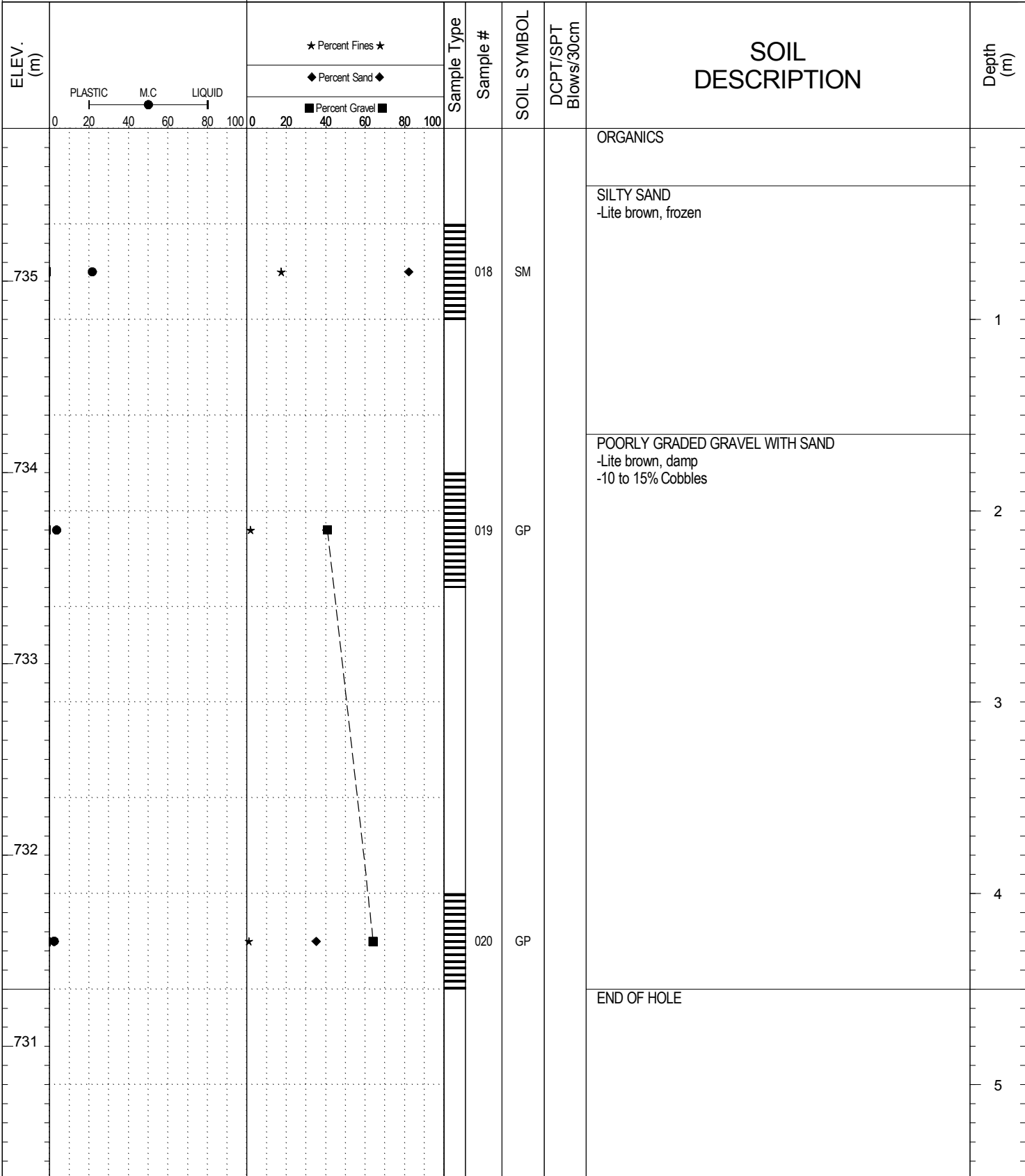
SAMPLE TYPE RETURN SPLIT SPOON AUGER BULK SPT CORE



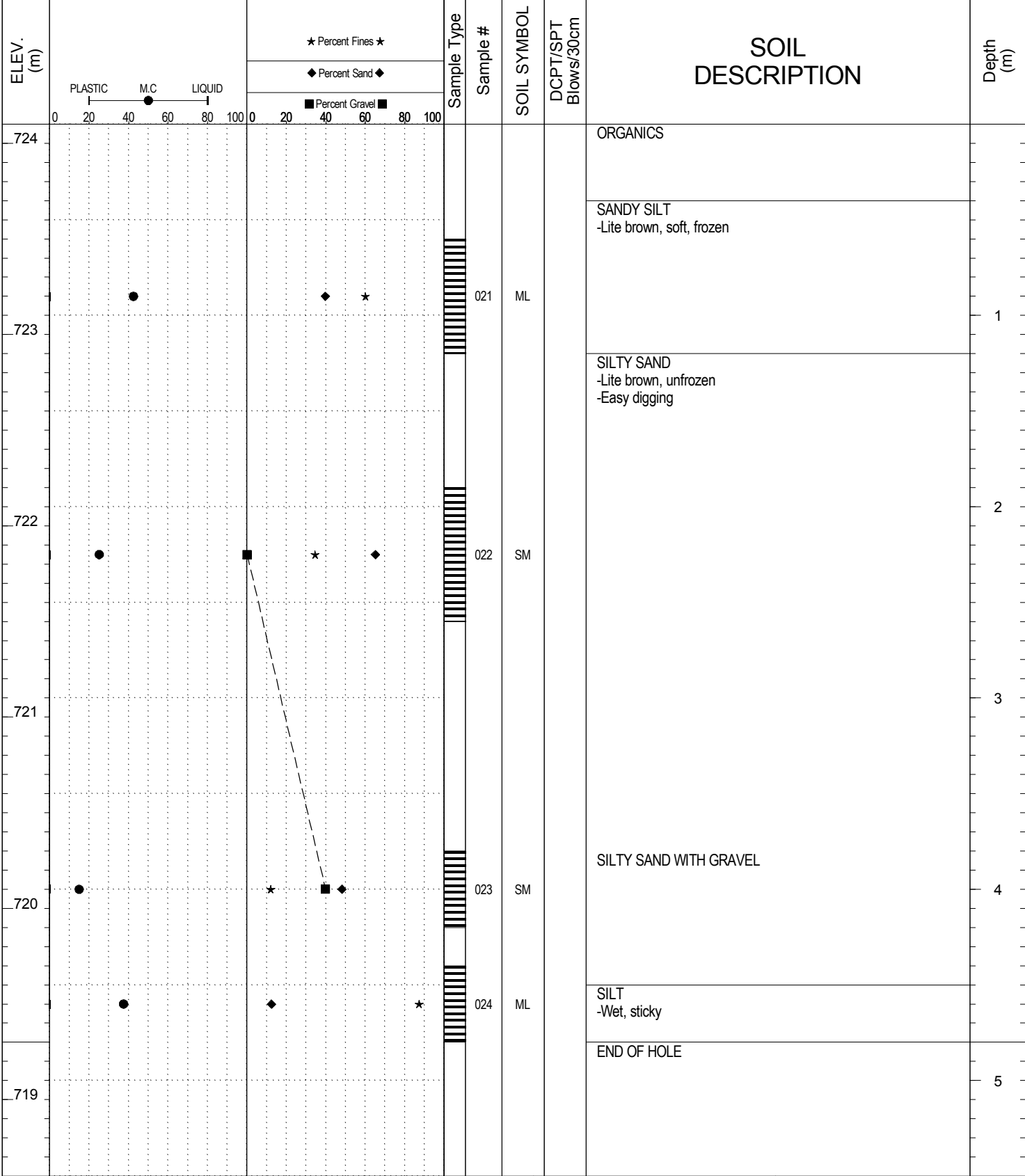
SAMPLE TYPE RETURN SPLIT SPOON AUGER BULK SPT CORE



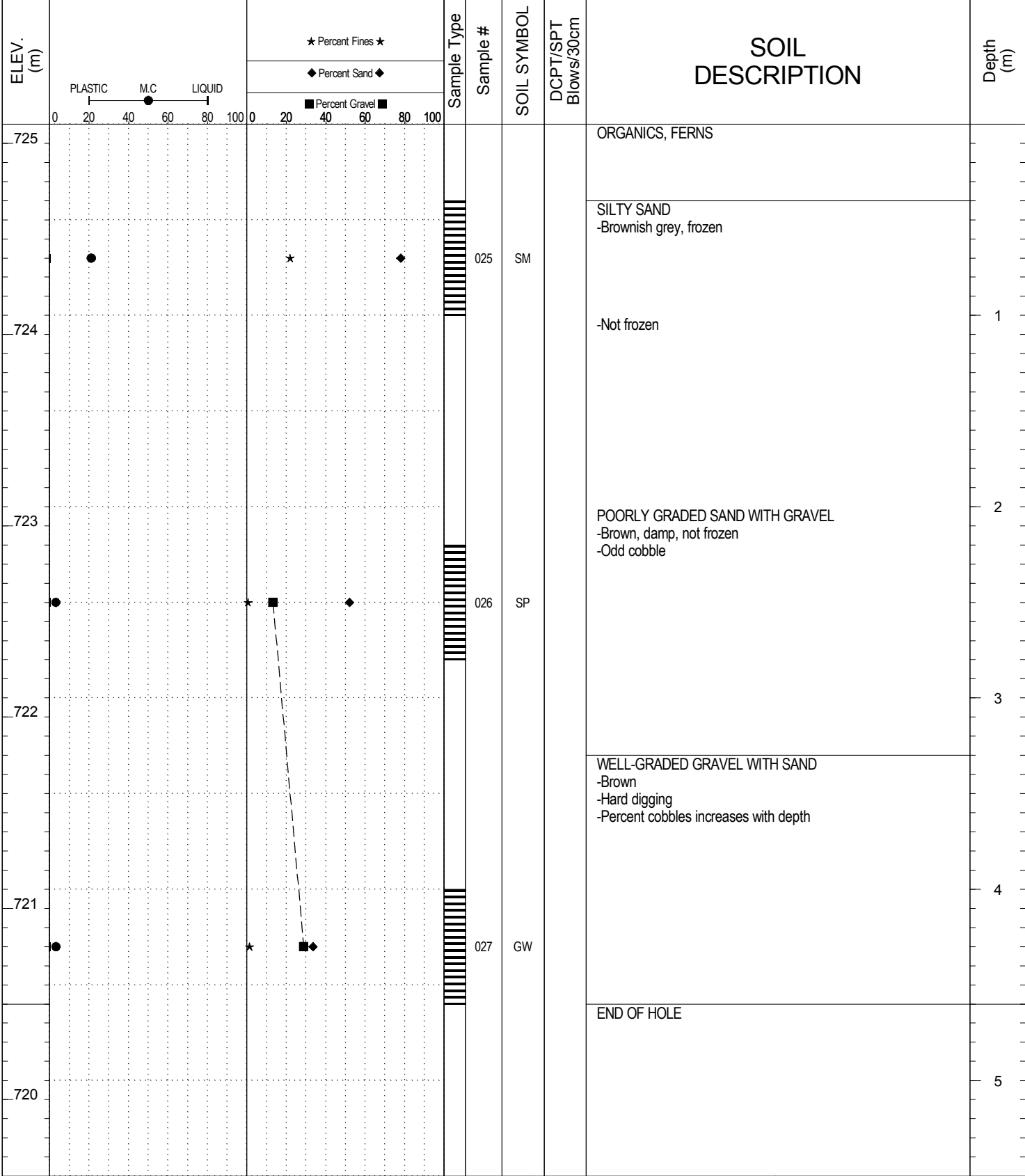
SAMPLE TYPE RETURN SPLIT SPOON AUGER BULK SPT CORE



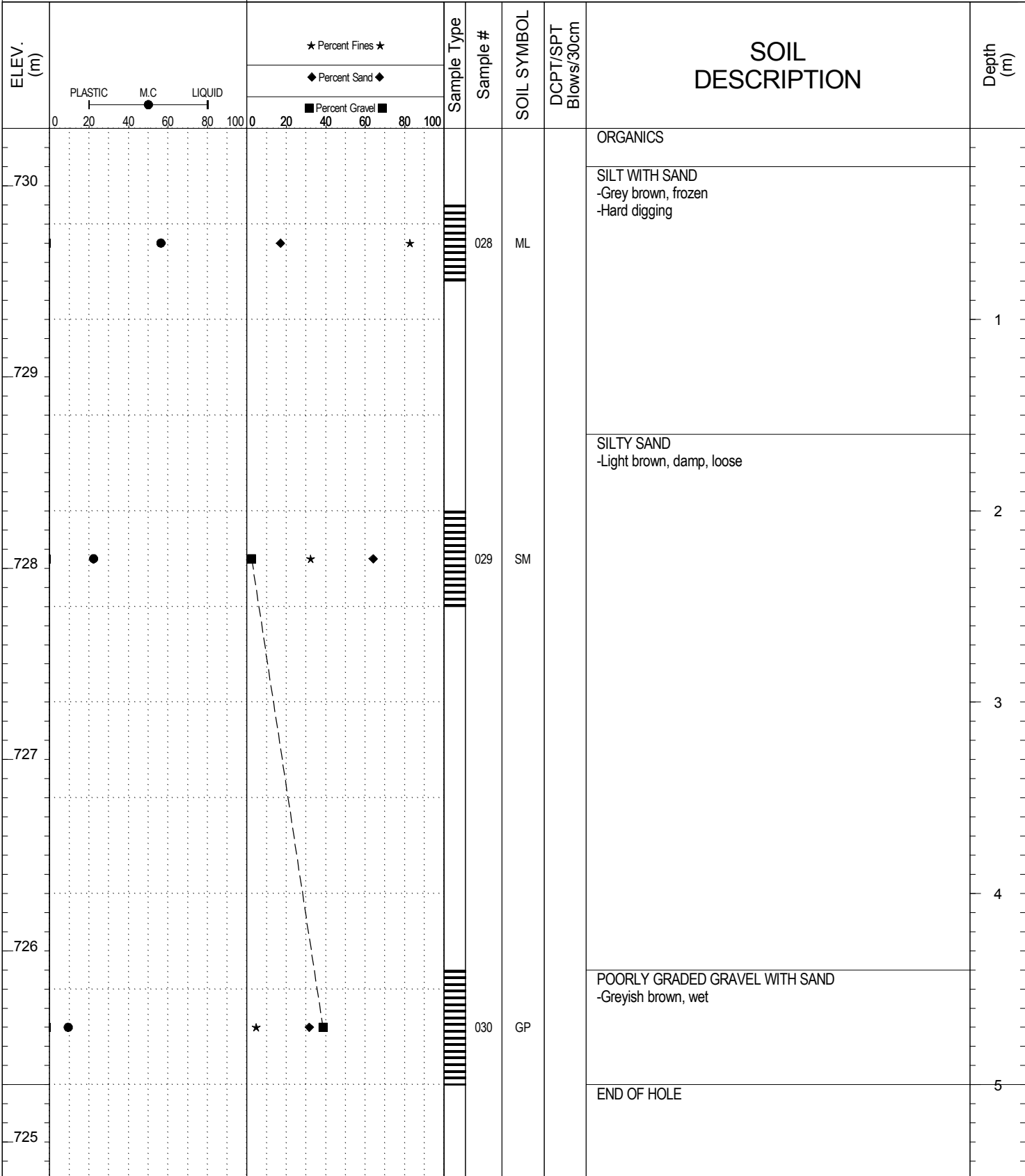
SAMPLE TYPE RETURN SPLIT SPOON AUGER BULK SPT CORE



SAMPLE TYPE RETURN SPLIT SPOON AUGER BULK SPT CORE



SAMPLE TYPE RETURN SPLIT SPOON AUGER BULK SPT CORE

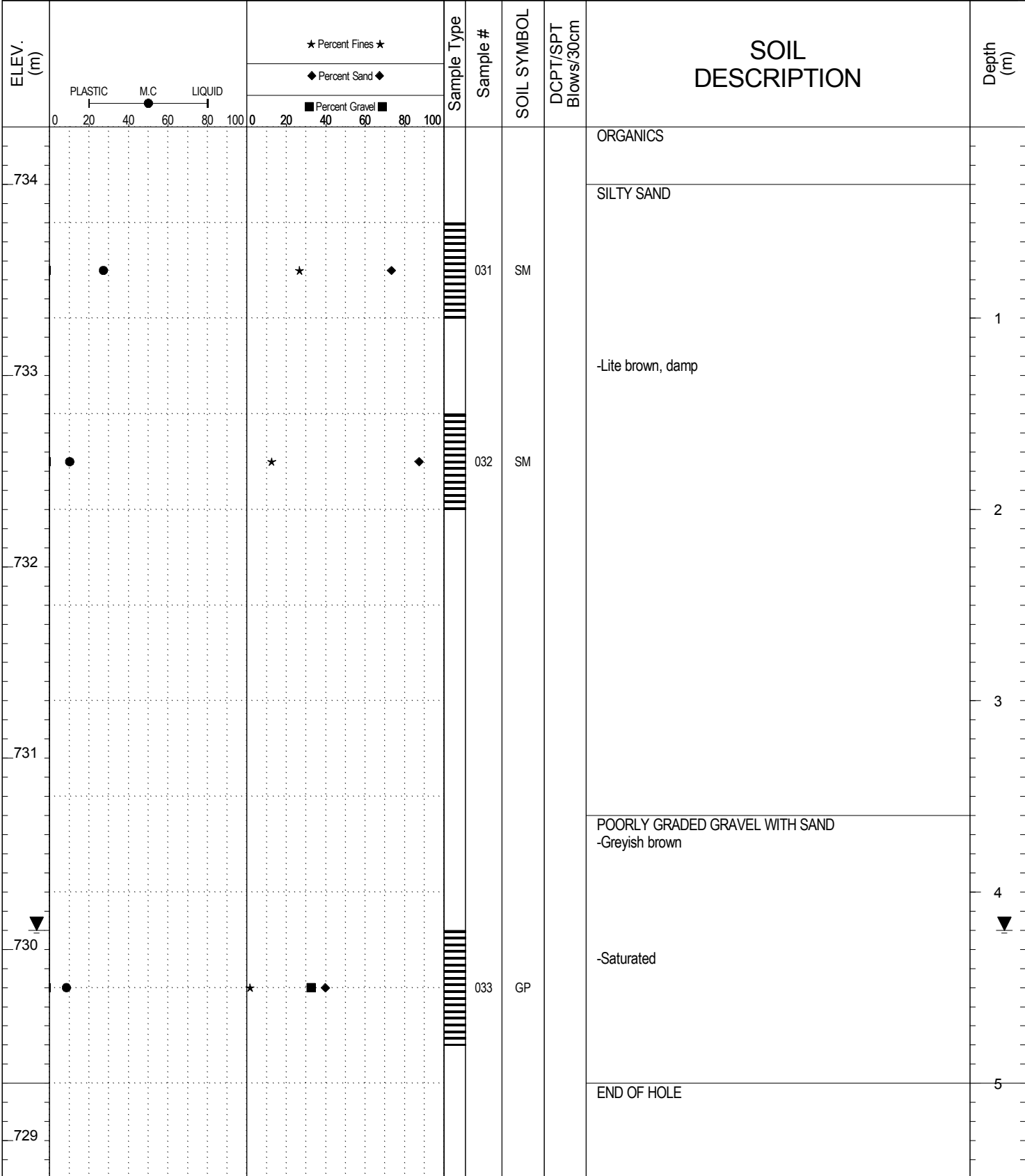


SUBSURFACE EXPLORATION AND TEST REPORT Alaska Hwy SOURCE/TP#: 804-4433

Far West Holdings Edith Creek Exploration, km 1782.5, PROJECT NO: 552-202101-1001 1-4

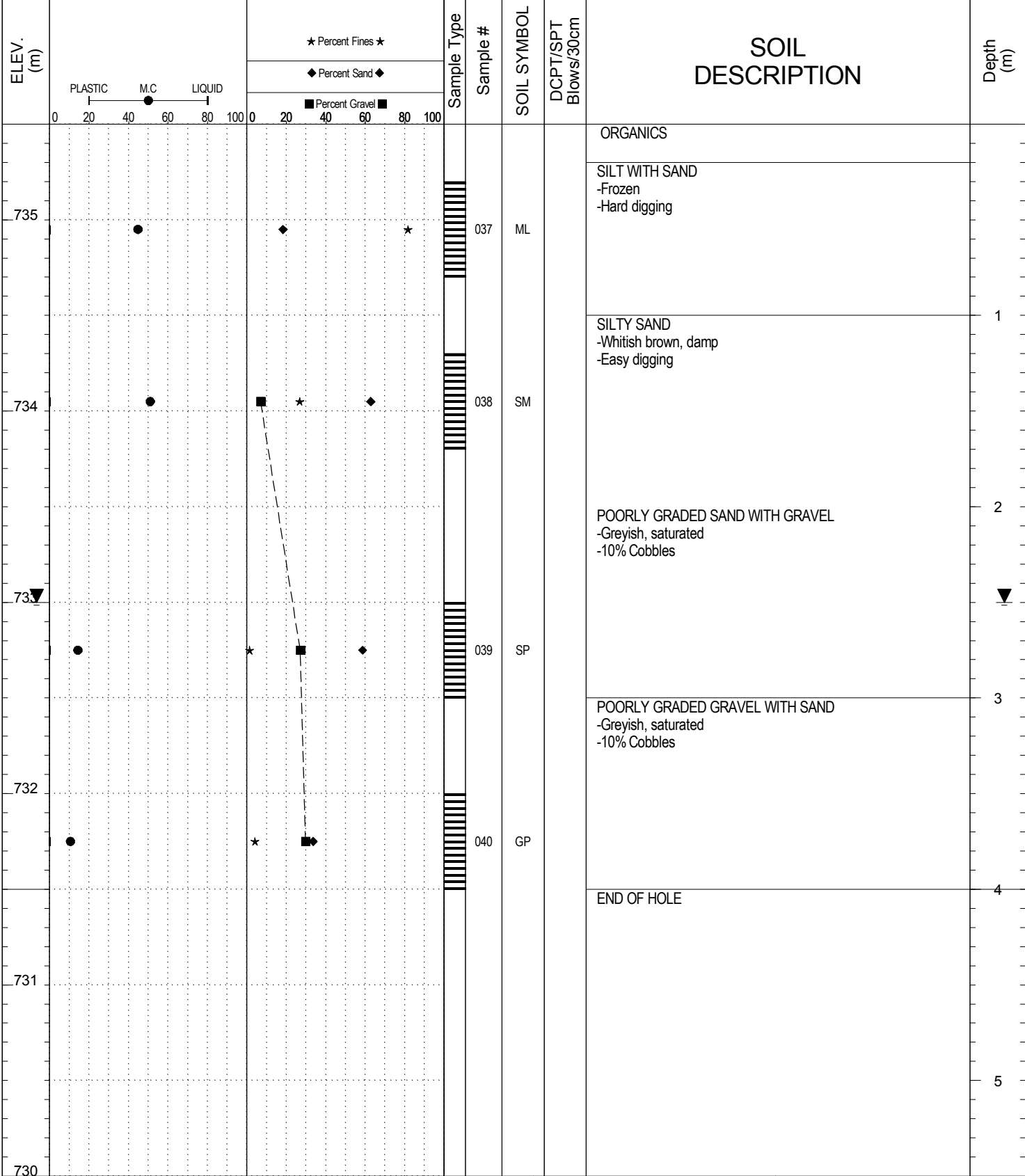
CAT Excavator 315C Coordinates: Z07 N6852286m E549915.2m ELEVATION: 734.3m

SAMPLE TYPE RETURN SPLIT SPOON AUGER BULK SPT CORE



SUBSURFACE EXPLORATION AND TEST REPORT		Alaska Hwy		SOURCE/TP#: 804-4434				
Far West Holdings		Edith Creek Exploration, km 1782.5,		PROJECT NO: 552-202101-1001 1-4				
CAT Excavator 315C		Coordinates: Z07 N6852373m E549860.1m		ELEVATION: 733.6m				
SAMPLE TYPE		<input checked="" type="checkbox"/> RETURN <input type="checkbox"/> SPLIT SPOON <input type="checkbox"/> AUGER <input type="checkbox"/> BULK <input checked="" type="checkbox"/> SPT <input type="checkbox"/> CORE						
ELEV. (m)	PLASTIC M.C LIQUID 0 20 40 60 80 100		★ Percent Fines ★ ◆ Percent Sand ◆ ■ Percent Gravel ■		SOIL SYMBOL	DCPT/SPT Blows/30cm	SOIL DESCRIPTION	Depth (m)
	0 20 40 60 80 100		0 20 40 60 80 100					
733			* ◆ ■ * ◆ ■		034	GW	ORGANICS	1
732			* ◆ ■ * ◆ ■				WELL-GRADED GRAVEL WITH SAND -Brown, damp -10% Cobbles	
731			* ◆ ■ * ◆ ■		035	GW	-15% Cobbles	2
730			* ◆ ■ * ◆ ■				-Wet	3
729			* ◆ ■ * ◆ ■		036	GW		4
							END OF HOLE	5
		LOGGED BY: B.Tyhy REVIEWED BY: PROJECT ENGINEER: M.Idrees		Termination Depth: 4.8m Complete: 7/4/2013 4:45:00 PM Pit #: 115-F-03				

SAMPLE TYPE RETURN SPLIT SPOON AUGER BULK SPT CORE



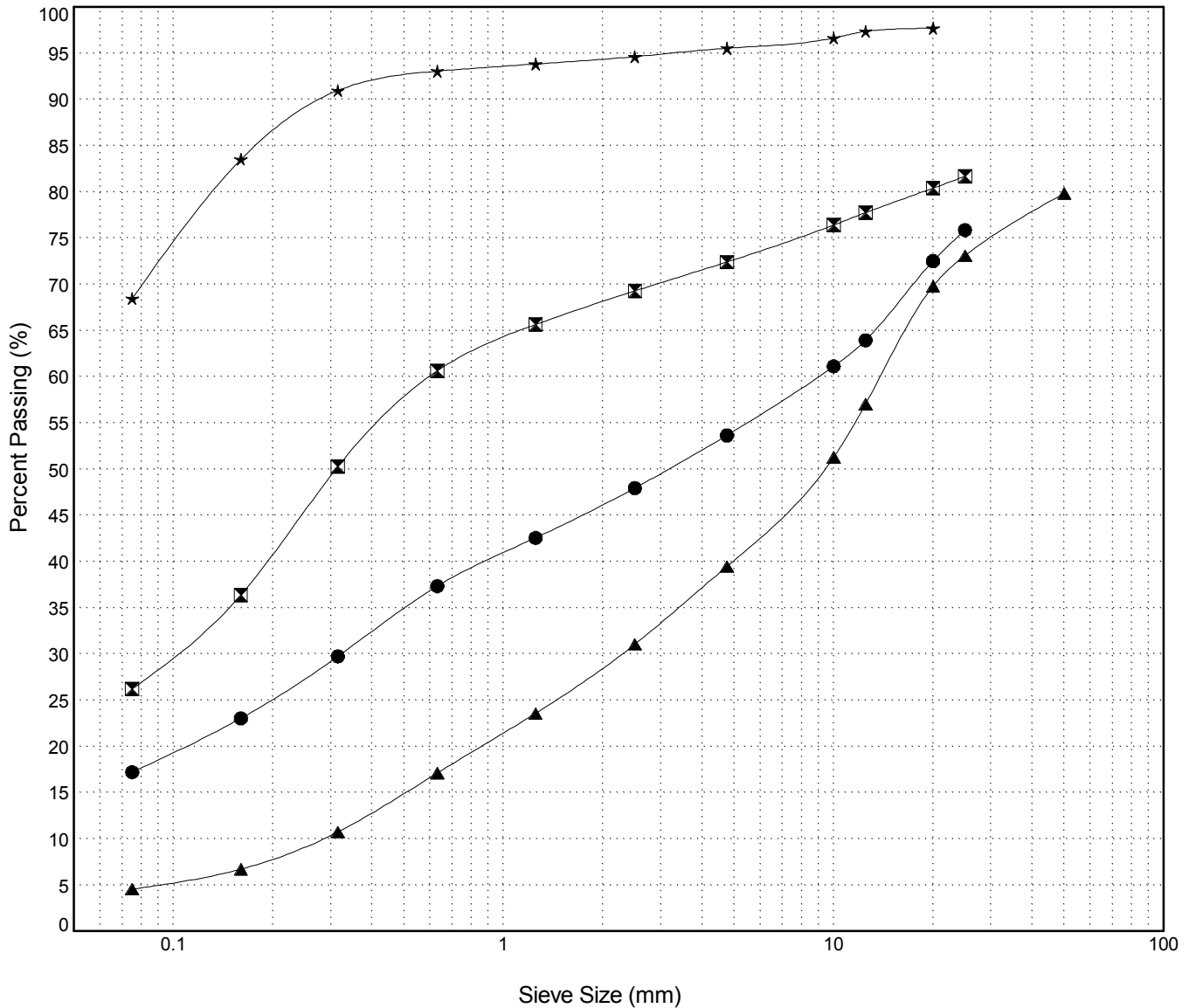
GRAIN SIZE ANALYSIS	Edith Creek Exploration	SOURCE/TP#: 804-4425
Far West Holdings	km 1782.5	PROJECT NO: 552-202101-1001 1-4
CAT Excavator 315C	Coordinates:Z07 N6852173m E550034.7m	ELEVATION: 737m

Master Revised July 2013

Field #	Lab #	Depth	Classification	%H2O	LL	PL	PI	Cc	Cu
● 004	2013-190	0.1 to 1.0	SILTY GRAVEL with SAND(GM)	10.4	NP	NP	NP		
☒ 005	2013-191	1.3 to 2.0	SILTY SAND with GRAVEL(SM)	19.9	NP	NP	NP		
▲ 006	2013-192	3.0 to 3.5	WELL-GRADED GRAVEL with SAND(GW)	4.7	NP	NP	NP	1.3	50.1
★ 007	2013-193	3.9 to 4.4	SANDY SILT(ML)	37.4	NP	NP	NP		

Field #	Lab #	% PASSING	Sieve Size (mm)													% Breakdown				
			100.0	80.0	50.0	25.0	20.0	12.5	10.0	5.0	2.5	1.25	0.630	0.315	0.160	0.080	Gravel	Sand	Silt	Clay
● 004	2013-190	100.0	100.0	100.0	100.0	75.9	72.5	63.9	61.1	53.6	47.9	42.6	37.3	29.7	23.0	17.2	22.2	36.4	17.2	
☒ 005	2013-191	100.0	100.0	100.0	81.7	80.4	77.7	76.4	72.4	69.3	65.6	60.6	50.3	36.4	26.2		9.3	46.2	26.2	
▲ 006	2013-192	100.0	100.0	79.8	73.1	69.8	57.0	51.3	39.5	31.0	23.6	17.1	10.7	6.7	4.5		40.4	34.9	4.5	
★ 007	2013-193	100.0	100.0	100.0	100.0	97.7	97.4	96.6	95.5	94.6	93.8	93.0	91.0	83.5	68.5		2.2	27.1	68.5	

Silt	Sand			Gravel	
	Fine	Medium	Coarse	Fine	Coarse



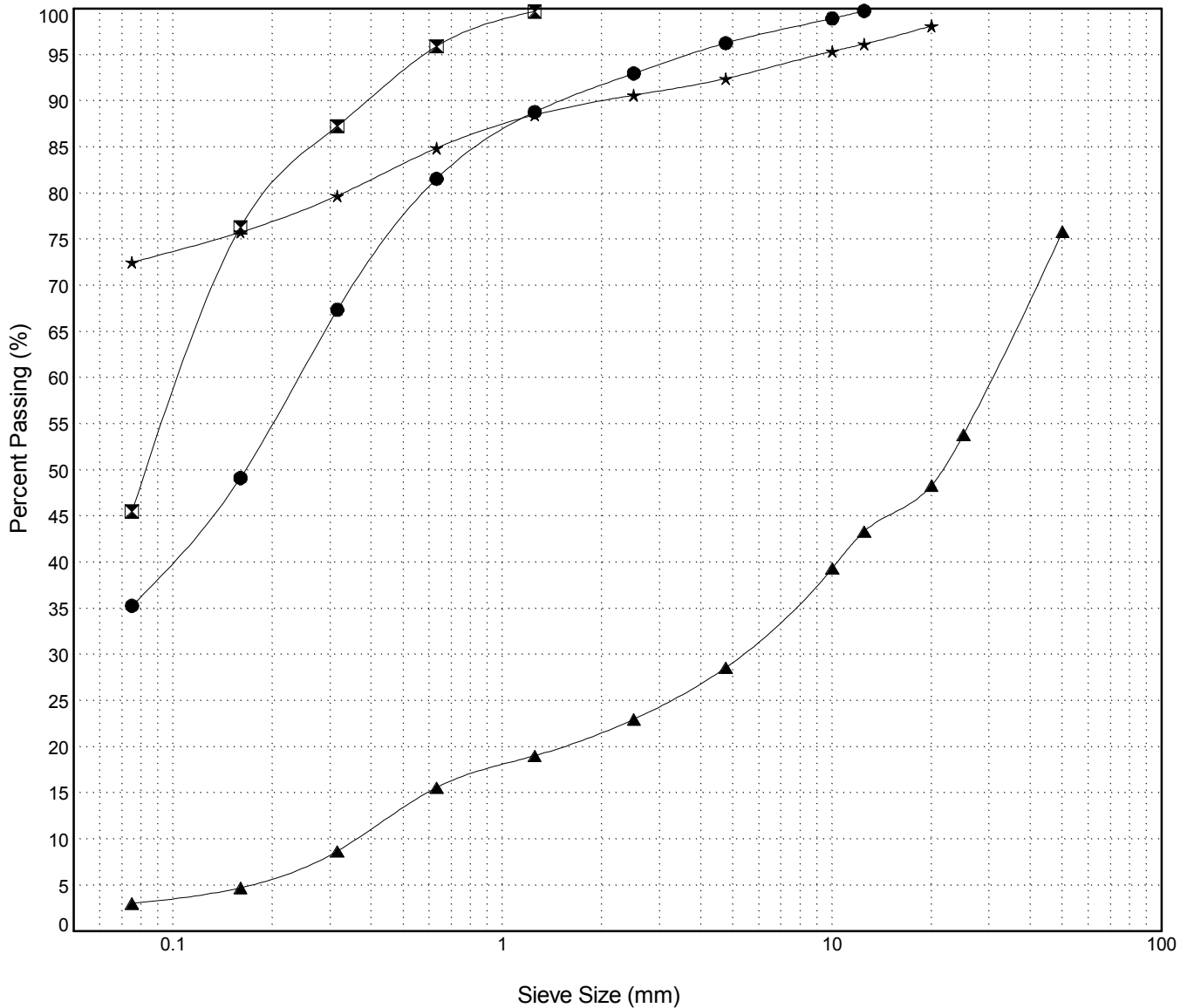
GRAIN SIZE ANALYSIS	Edith Creek Exploration	SOURCE/TP#: 804-4426
Far West Holdings	km 1782.5	PROJECT NO: 552-202101-1001 1-4
CAT Excavator 315C	Coordinates:Z07 N6852193m E549906.4m	ELEVATION: 736.7m

Master Revised July 2013

Field #	Lab #	Depth	Classification	%H2O	LL	PL	PI	Cc	Cu
● 008	2013-194	0.4 to 1.2	SILTY SAND(SM)	38.2	NP	NP	NP		
☒ 009	2013-195	2.0 to 2.5	SILTY SAND(SM)	29.5	NP	NP	NP		
▲ 010	2013-196	3.0 to 3.5	WELL-GRADED GRAVEL with SAND(GW)	6.6	NP	NP	NP	2.5	84.5
★ 011	2013-197	4.1 to 4.6	SILT with SAND(ML)	40.2	NP	NP	NP		

Field #	Lab #	% PASSING	Sieve Size (mm)													% Breakdown			
			100.0	80.0	50.0	25.0	20.0	12.5	10.0	5.0	2.5	1.25	0.630	0.315	0.160	0.080	Gravel	Sand	Silt
● 008	2013-194	100.0	100.0	100.0	100.0	100.0	99.8	98.9	96.3	93.0	88.8	81.6	67.4	49.1	35.3	3.5	61.0	35.3	
☒ 009	2013-195	100.0	100.0	100.0	100.0	100.0	100.0	100.0	100.0	100.0	99.7	95.9	87.3	76.3	45.5		54.2	45.5	
▲ 010	2013-196	100.0	100.0	75.8	53.8	48.3	43.3	39.4	28.6	23.0	19.0	15.6	8.7	4.7	3.0	47.3	25.5	3.0	
★ 011	2013-197	100.0	100.0	100.0	100.0	98.1	96.2	95.4	92.4	90.6	88.5	84.9	79.7	75.8	72.5	5.7	19.9	72.5	

Silt	Sand			Gravel	
	Fine	Medium	Coarse	Fine	Coarse



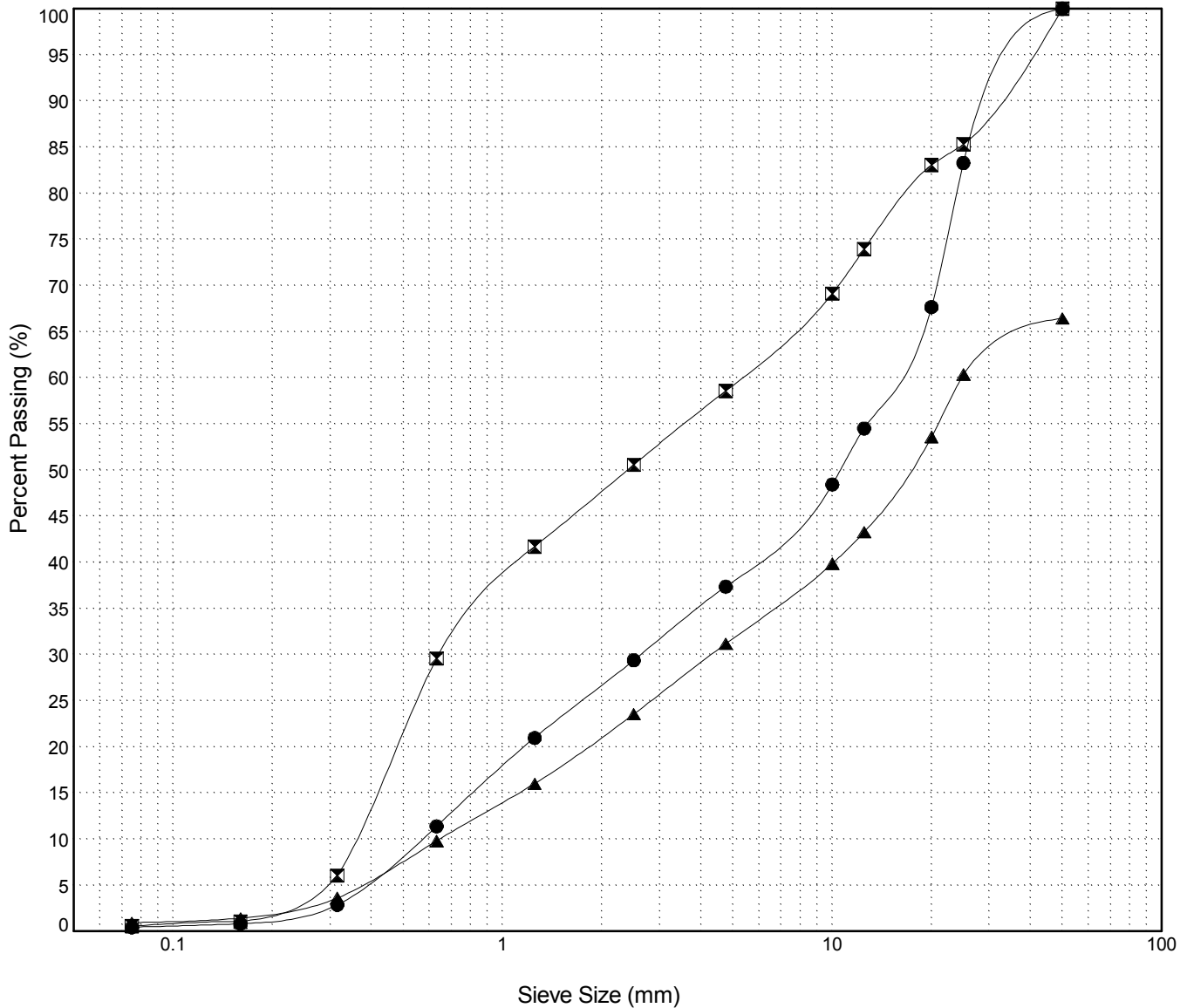
GRAIN SIZE ANALYSIS	Edith Creek Exploration	SOURCE/TP#: 804-4427
Far West Holdings	km 1782.5	PROJECT NO: 552-202101-1001 1-4
CAT Excavator 315C	Coordinates: Z07 N6852189m E549802.2m	ELEVATION: 739.3m

Master Revised July 2013

Field #	Lab #	Depth	Classification	%H2O	LL	PL	PI	Cc	Cu
● 012	2013-198	0.4 to 1.0	POORLY GRADED GRAVEL with SAND(GP)	2.0	NP	NP	NP	0.8	27.0
☒ 013	2013-199	2.4 to 3.0	POORLY GRADED SAND with GRAVEL(SP)	5.0	NP	NP	NP	0.2	14.9
▲ 014	2013-200	4.0 to 4.5	WELL-GRADED GRAVEL with SAND(GW)	2.5	NP	NP	NP	1.2	38.3

Field #	Lab #	% PASSING														% Breakdown		
			100.0	80.0	50.0	25.0	20.0	12.5	10.0	5.0	2.5	1.25	0.630	0.315	0.160	0.080	Gravel	Sand
● 012	2013-198	100.0	100.0	100.0	83.3	67.7	54.5	48.4	37.4	29.4	21.0	11.4	2.9	0.8	0.5	62.6	36.9	0.5
☒ 013	2013-199	100.0	100.0	100.0	85.3	83.1	73.9	69.1	58.6	50.6	41.7	29.6	6.1	1.1	0.6	41.4	58.0	0.6
▲ 014	2013-200	100.0	100.0	66.4	60.4	53.6	43.3	39.9	31.2	23.5	16.0	9.8	3.6	1.4	0.9	35.3	30.2	0.9

Silt	Sand			Gravel	
	Fine	Medium	Coarse	Fine	Coarse



Highways and Public Works
Transportation Engineering Branch

LOGGED BY: B.Tyhy
REVIEWED BY:
PROJECT ENGINEER: M.Idrees

Pit #: 115-F-03
Complete: 7/3/2013 3:30:00 PM

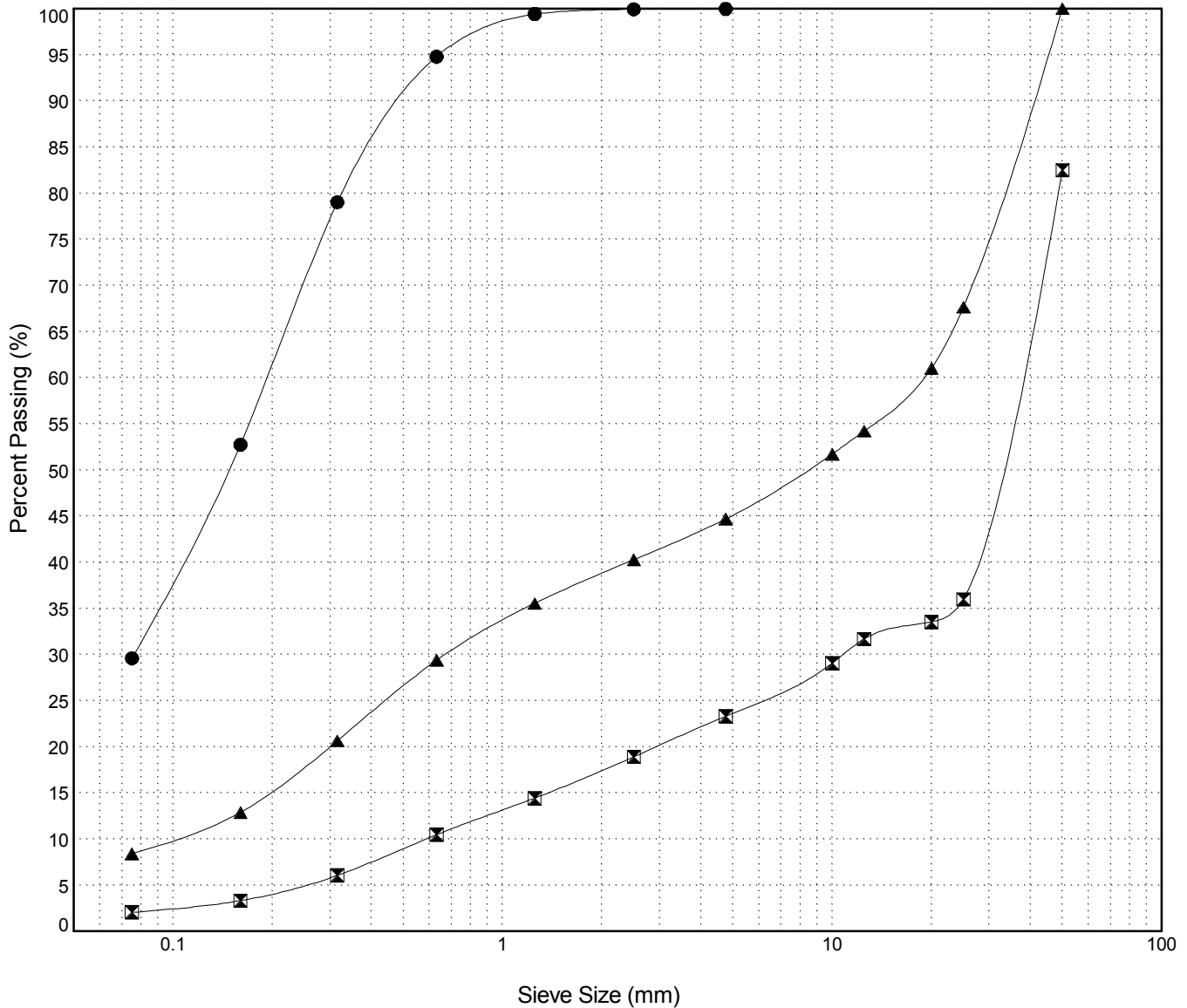
GRAIN SIZE ANALYSIS	Edith Creek Exploration	SOURCE/TP#: 804-4428
Far West Holdings	km 1782.5	PROJECT NO: 552-202101-1001 1-4
CAT Excavator 315C	Coordinates: Z07 N6852183m E549717.5m	ELEVATION: 737.9m

Master Revised July 2013

Field #	Lab #	Depth	Classification	%H2O	LL	PL	PI	Cc	Cu
● 015	2013-201	0.5 to 1.0	SILTY SAND(SM)	33.4	NP	NP	NP		
☒ 016	2013-202	2.0 to 2.6	POORLY GRADED GRAVEL with SAND(GP)	2.5	NP	NP	NP	5.6	61.1
▲ 017	2013-203	3.8 to 4.4	POORLY GRADED GRAVEL with SILT and SAND(GP-GM)	7.2	NP	NP	NP	0.2	189.8

Field #	Lab #	% PASSING	Sieve Size (mm)													% Breakdown				
			100.0	80.0	50.0	25.0	20.0	12.5	10.0	5.0	2.5	1.25	0.630	0.315	0.160	0.080	Gravel	Sand	Silt	Clay
● 015	2013-201	100.0	100.0	100.0	100.0	100.0	100.0	100.0	100.0	99.9	99.4	94.8	79.0	52.7	29.6		70.4	29.6		
☒ 016	2013-202	100.0	100.0	82.5	36.0	33.5	31.7	29.1	23.3	18.9	14.4	10.5	6.1	3.3	2.1		59.2	21.2	2.1	
▲ 017	2013-203	100.0	100.0	100.0	67.6	61.0	54.2	51.7	44.7	40.3	35.5	29.4	20.6	12.9	8.4		55.3	36.3	8.4	

Silt	Sand			Gravel	
	Fine	Medium	Coarse	Fine	Coarse



Highways and Public Works
Transportation Engineering Branch

LOGGED BY: B.Tyhy
REVIEWED BY:
PROJECT ENGINEER: M.Ildres

Pit #: 115-F-03
Complete: 7/3/2013 4:15:00 PM

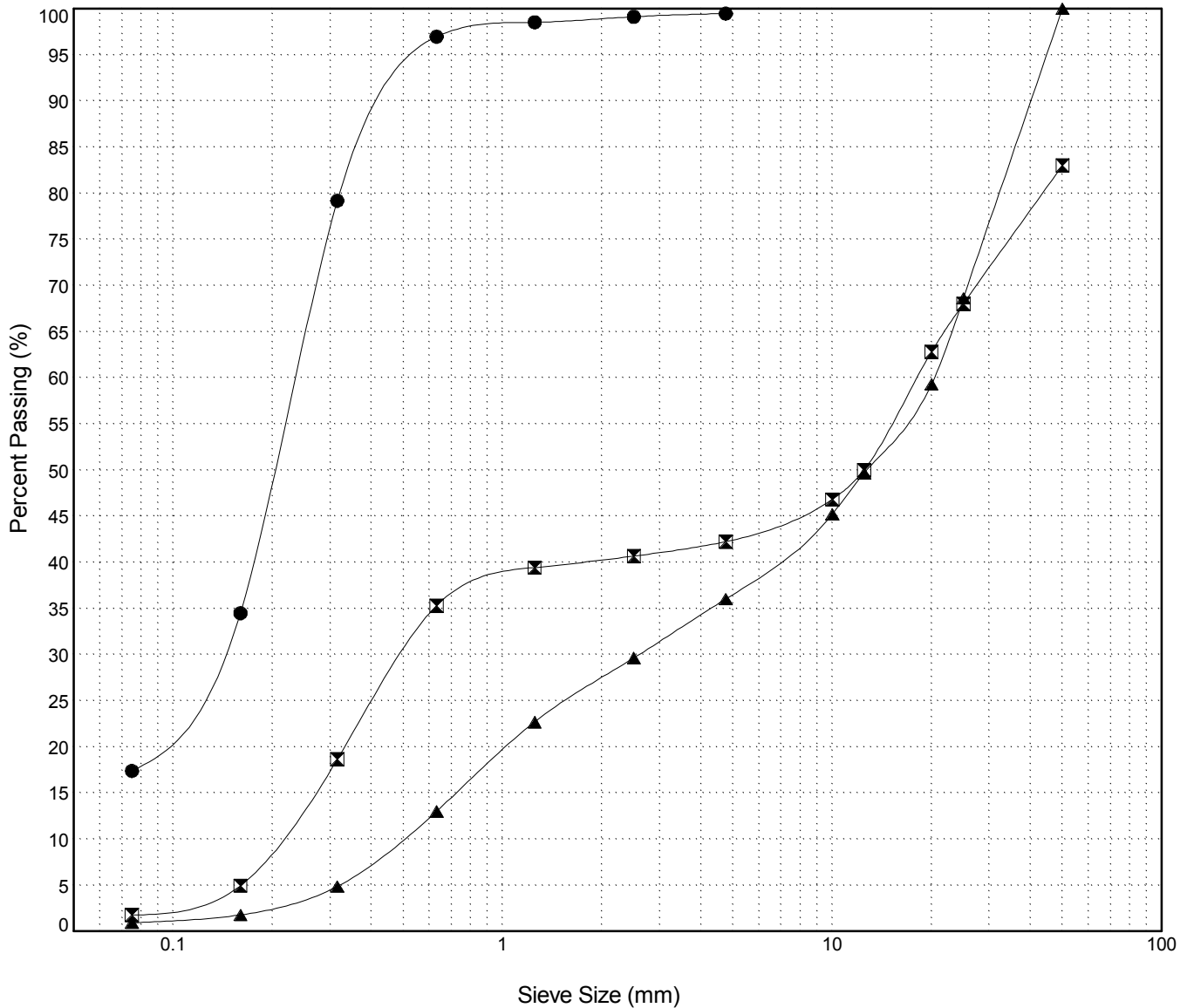
GRAIN SIZE ANALYSIS	Edith Creek Exploration	SOURCE/TP#: 804-4429
Far West Holdings	km 1782.5	PROJECT NO: 552-202101-1001 1-4
CAT Excavator 315C	Coordinates: Z07 N6852289m E549821.1m	ELEVATION: 735.8m

Master Revised July 2013

Field #	Lab #	Depth	Classification	%H2O	LL	PL	PI	Cc	Cu
● 018	2013-204	0.5 to 1.0	SILTY SAND(SM)	21.6	NP	NP	NP		
☒ 019	2013-205	1.8 to 2.4	POORLY GRADED GRAVEL with SAND(GP)	3.5	NP	NP	NP	0.1	87.8
▲ 020	2013-206	4.0 to 4.5	POORLY GRADED GRAVEL with SAND(GP)	2.3	NP	NP	NP	0.7	41.7

Field #	Lab #	% PASSING															% Breakdown			
			100.0	80.0	50.0	25.0	20.0	12.5	10.0	5.0	2.5	1.25	0.630	0.315	0.160	0.080	Gravel	Sand	Silt	Clay
● 018	2013-204	100.0	100.0	100.0	100.0	100.0	100.0	100.0	99.5	99.1	98.5	97.0	79.2	34.5	17.4	82.1	17.4			
☒ 019	2013-205	100.0	100.0	83.0	68.0	62.8	50.0	46.8	42.2	40.7	39.4	35.3	18.6	5.0	1.8	40.8	40.5	1.8		
▲ 020	2013-206	100.0	100.0	100.0	68.6	59.3	49.7	45.2	36.0	29.6	22.7	13.0	4.9	1.8	0.9	64.0	35.1	0.9		

Silt	Sand			Gravel	
	Fine	Medium	Coarse	Fine	Coarse



Highways and Public Works
Transportation Engineering Branch

LOGGED BY: B.Tyhy
REVIEWED BY:
PROJECT ENGINEER: M.Idrees

Pit #: 115-F-03
Complete: 7/3/2013 5:15:00 PM

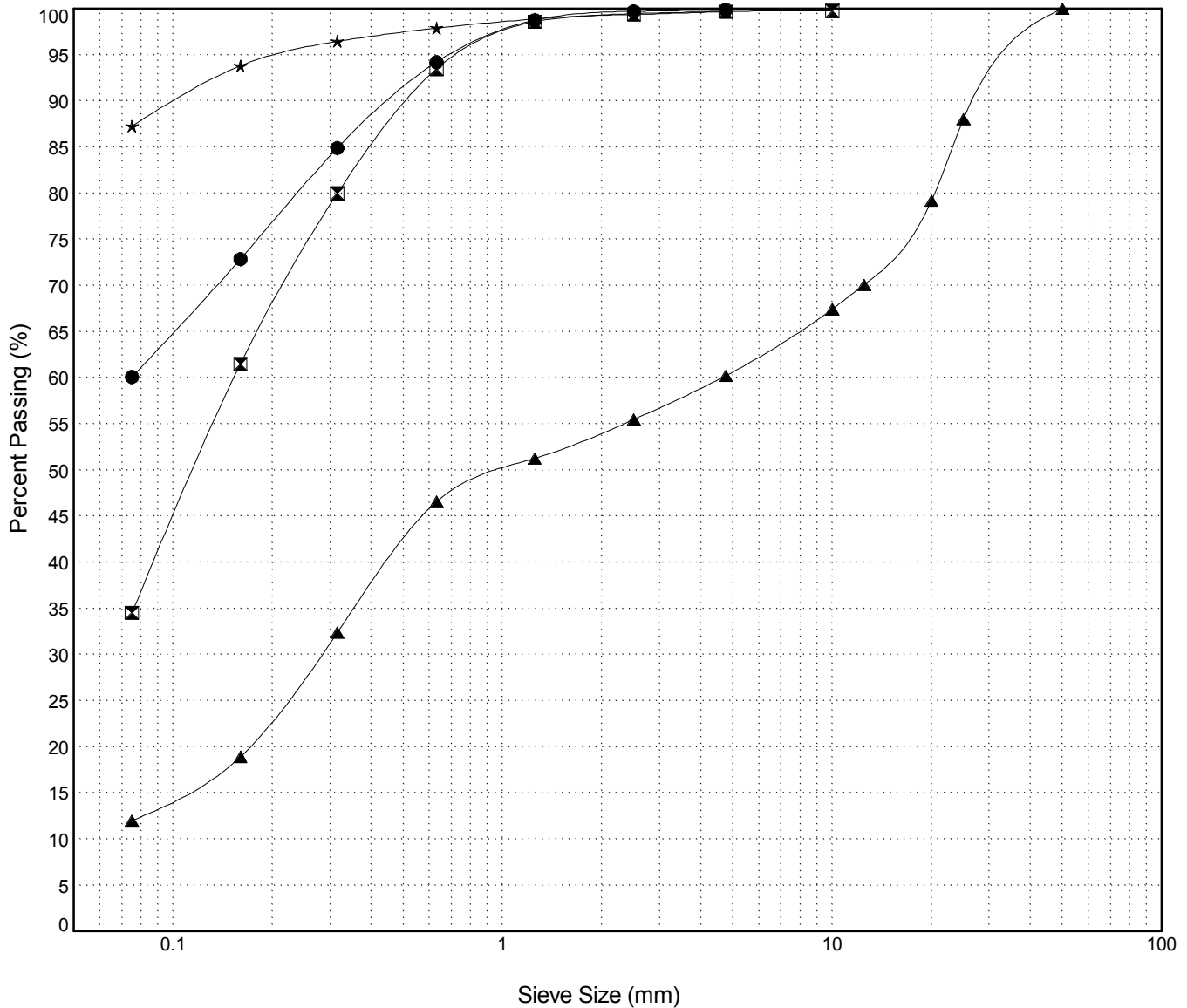
GRAIN SIZE ANALYSIS	Edith Creek Exploration	SOURCE/TP#: 804-4430
Far West Holdings	km 1782.5	PROJECT NO: 552-202101-1001 1-4
CAT Excavator 315C	Coordinates:Z07 N6852094m E549861.4m	ELEVATION: 724.1m

Master Revised July 2013

Field #	Lab #	Depth	Classification	%H2O	LL	PL	PI	Cc	Cu
● 021	2013-207	0.6 to 1.2	SANDY SILT(ML)	42.5	NP	NP	NP		
☒ 022	2013-208	1.9 to 2.6	SILTY SAND(SM)	25.1	NP	NP	NP		
▲ 023	2013-209	3.8 to 4.2	SILTY SAND with GRAVEL(SM)	14.9	NP	NP	NP	0.3	76.8
★ 024	2013-210	4.4 to 4.8	SILT(ML)	37.4	NP	NP	NP		

Field #	Lab #	% PASSING	% Breakdown																	
			100.0	80.0	50.0	25.0	20.0	12.5	10.0	5.0	2.5	1.25	0.630	0.315	0.160	0.080	Gravel	Sand	Silt	Clay
● 021	2013-207	100.0	100.0	100.0	100.0	100.0	100.0	100.0	99.8	99.7	98.7	94.2	84.9	72.9	60.1		39.8	60.1		
☒ 022	2013-208	100.0	100.0	100.0	100.0	100.0	100.0	99.8	99.7	99.4	98.6	93.5	80.0	61.5	34.5	0.1	65.1	34.5		
▲ 023	2013-209	100.0	100.0	100.0	88.0	79.2	70.1	67.4	60.2	55.5	51.3	46.6	32.4	18.9	12.0	39.8	48.2	12.0		
★ 024	2013-210	100.0	100.0	100.0	100.0	100.0	100.0	100.0	99.7	99.5	98.9	97.9	96.4	93.8	87.3		12.4	87.3		

Silt	Sand			Gravel	
	Fine	Medium	Coarse	Fine	Coarse



Highways and Public Works
Transportation Engineering Branch

LOGGED BY: B.Tyhy
REVIEWED BY:
PROJECT ENGINEER: M.Idrees

Pit #: 115-F-03
Complete: 7/4/2013 11:00:00 AM

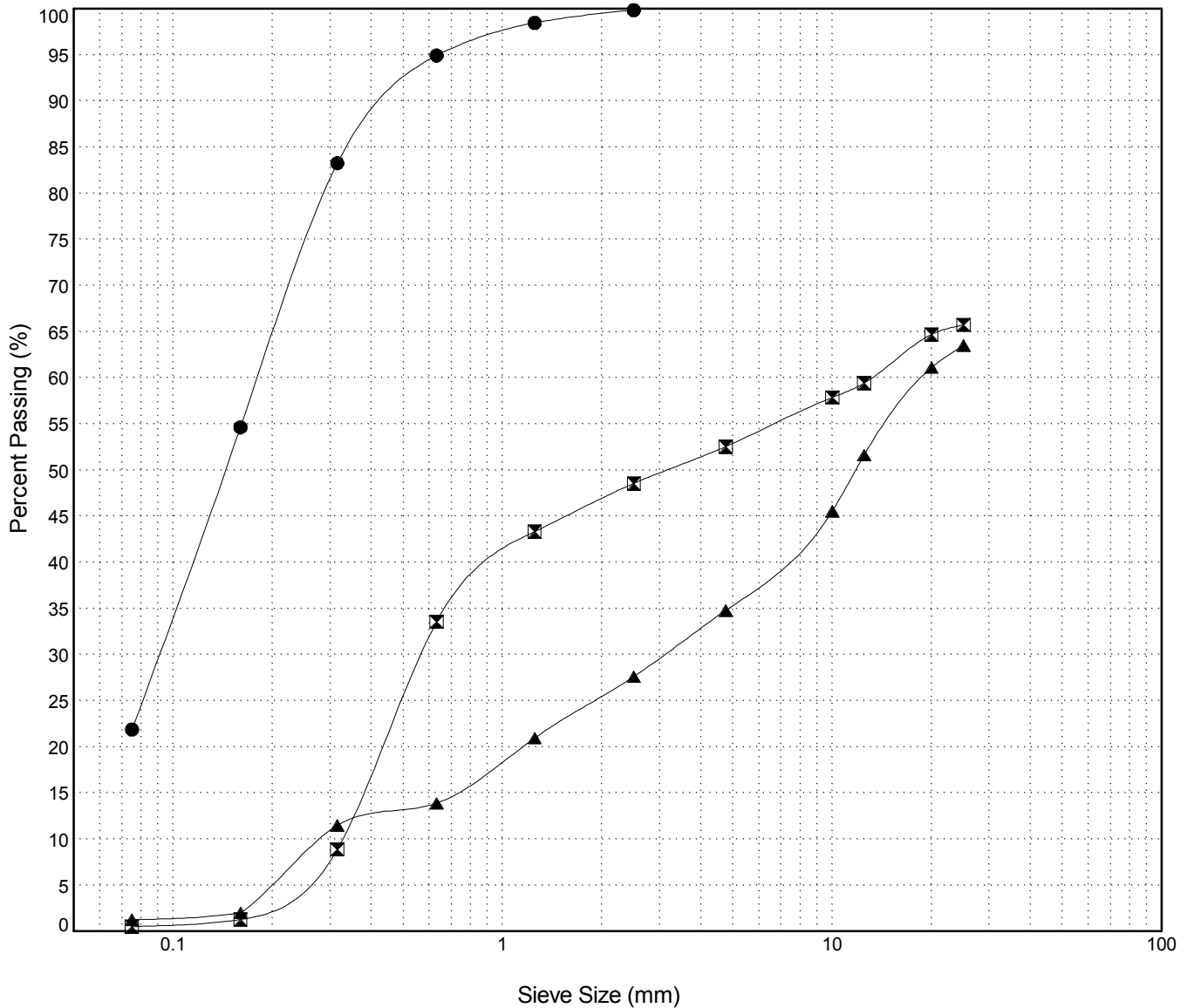
GRAIN SIZE ANALYSIS	Edith Creek Exploration	SOURCE/TP#: 804-4431
Far West Holdings	km 1782.5	PROJECT NO: 552-202101-1001 1-4
CAT Excavator 315C	Coordinates: Z07 N6852290m E549719.9m	ELEVATION: 725.1m

Master Revised July 2013

Field #	Lab #	Depth	Classification	%H2O	LL	PL	PI	Cc	Cu
● 025	2013-211	0.4 to 1.0	SILTY SAND(SM)	21.1	NP	NP	NP		
☒ 026	2013-212	2.2 to 2.8	POORLY GRADED SAND with GRAVEL(SP)	3.1	NP	NP	NP	0.1	40.6
▲ 027	2013-213	4.0 to 4.6	WELL-GRADED GRAVEL with SAND(GW)	3.2	NP	NP	NP	1.8	66.9

Field #	Lab #	% PASSING	Sieve Size (mm)													% Breakdown				
			100.0	80.0	50.0	25.0	20.0	12.5	10.0	5.0	2.5	1.25	0.630	0.315	0.160	0.080	Gravel	Sand	Silt	Clay
● 025	2013-211	100.0	100.0	100.0	100.0	100.0	100.0	100.0	100.0	99.8	98.5	94.9	83.3	54.6	21.9		78.0	21.9		
☒ 026	2013-212	100.0	100.0	100.0	65.7	64.7	59.4	57.9	52.5	48.5	43.3	33.6	8.9	1.3	0.5	13.2	52.0	0.5		
▲ 027	2013-213	100.0	100.0	100.0	63.5	61.1	51.6	45.5	34.8	27.6	20.9	13.9	11.5	2.0	1.3	28.7	33.5	1.3		

Silt	Sand			Gravel	
	Fine	Medium	Coarse	Fine	Coarse



Highways and Public Works
Transportation Engineering Branch

LOGGED BY: B.Tyhy
REVIEWED BY:
PROJECT ENGINEER: M.Idrees

Pit #: 115-F-03
Complete: 7/4/2013 12:05:00 PM

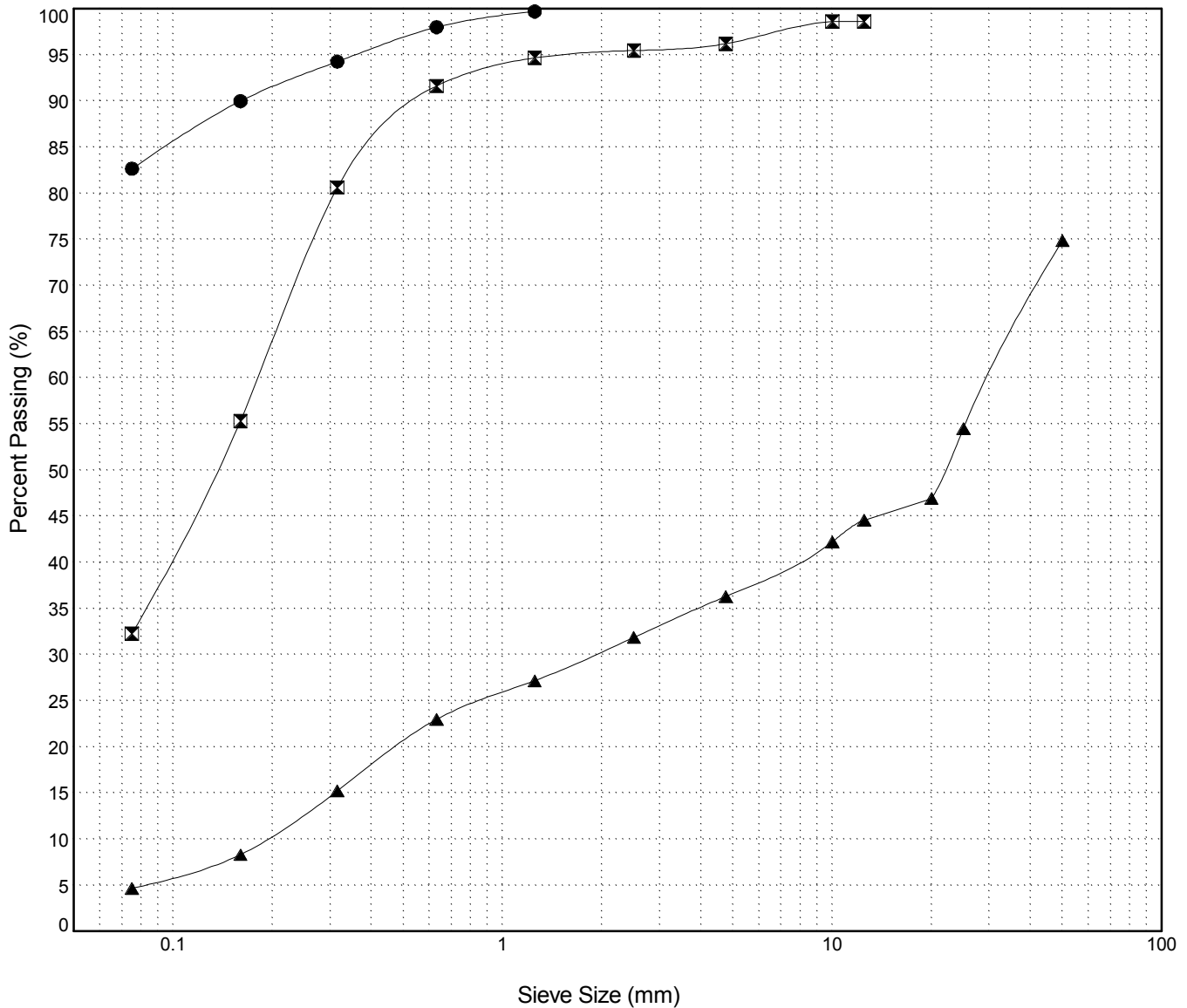
GRAIN SIZE ANALYSIS	Edith Creek Exploration	SOURCE/TP#: 804-4432
Far West Holdings	km 1782.5	PROJECT NO: 552-202101-1001 1-4
CAT Excavator 315C	Coordinates:Z07 N6852364m E549679.3m	ELEVATION: 730.3m

Master Revised July 2013

Field #	Lab #	Depth	Classification	%H2O	LL	PL	PI	Cc	Cu
● 028	2013-214	0.4 to 0.8	SILT with SAND(ML)	56.4	NP	NP	NP		
☒ 029	2013-215	2.0 to 2.5	SILTY SAND(SM)	22.2	NP	NP	NP		
▲ 030	2013-216	4.4 to 5.0	POORLY GRADED GRAVEL with SAND(GP)	9.3	NP	NP	NP	0.6	159.8

Field #	Lab #	% PASSING	Sieve Size (mm)													% Breakdown				
			100.0	80.0	50.0	25.0	20.0	12.5	10.0	5.0	2.5	1.25	0.630	0.315	0.160	0.080	Gravel	Sand	Silt	Clay
● 028	2013-214	100.0	100.0	100.0	100.0	100.0	100.0	100.0	100.0	100.0	99.7	98.0	94.3	90.0	82.7		17.0	82.7		
☒ 029	2013-215	100.0	100.0	100.0	100.0	100.0	98.6	98.6	96.2	95.5	94.7	91.6	80.6	55.3	32.2	2.4	64.0	32.2		
▲ 030	2013-216	100.0	100.0	74.9	54.5	46.9	44.6	42.2	36.3	31.9	27.2	23.0	15.2	8.3	4.7	38.6	31.6	4.7		

Silt	Sand			Gravel	
	Fine	Medium	Coarse	Fine	Coarse



**Highways and Public Works
Transportation Engineering Branch**

LOGGED BY: B.Tyhy
REVIEWED BY:
PROJECT ENGINEER: M.Idrees

Pit #: 115-F-03
Complete: 7/4/2013 2:45:00 PM

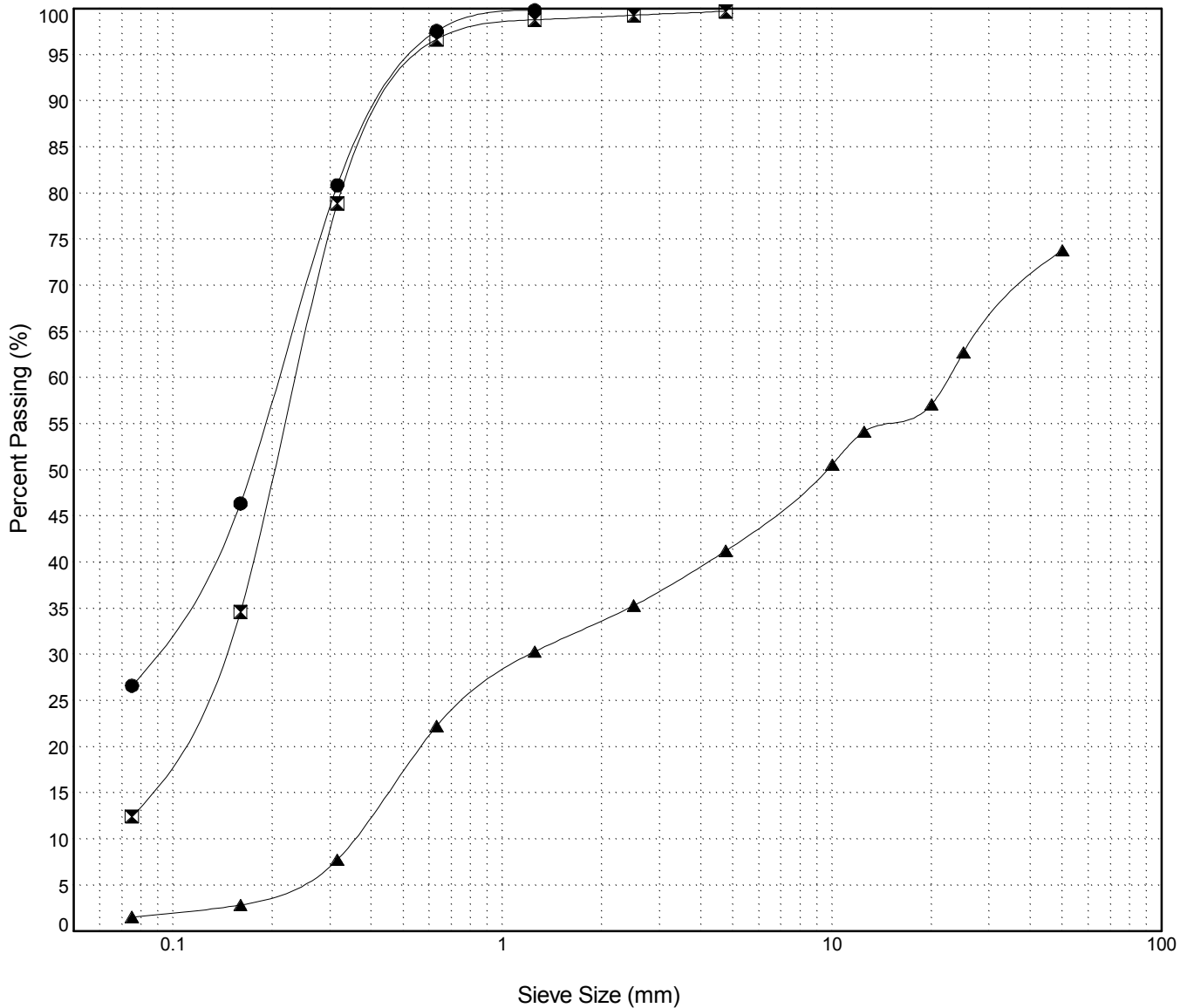
GRAIN SIZE ANALYSIS	Edith Creek Exploration	SOURCE/TP#: 804-4433
Far West Holdings	km 1782.5	PROJECT NO: 552-202101-1001 1-4
CAT Excavator 315C	Coordinates: Z07 N6852286m E549915.2m	ELEVATION: 734.3m

Master Revised July 2013

Field #	Lab #	Depth	Classification	%H2O	LL	PL	PI	Cc	Cu
● 031	2013-217	0.5 to 1.0	SILTY SAND(SM)	27.2	NP	NP	NP		
☒ 032	2013-218	1.5 to 2.0	SILTY SAND(SM)	10.1	NP	NP	NP	1.1	3.4
▲ 033	2013-219	4.2 to 4.8	POORLY GRADED GRAVEL with SAND(GP)	8.5	NP	NP	NP	0.2	64.0

Field #	Lab #	% PASSING	Sieve Size (mm)													% Breakdown					
			100.0	80.0	50.0	25.0	20.0	12.5	10.0	5.0	2.5	1.25	0.630	0.315	0.160	0.080	Gravel	Sand	Silt	Clay	
● 031	2013-217	100.0	100.0	100.0	100.0	100.0	100.0	100.0	100.0	100.0	100.0	100.0	100.0	100.0	99.8	97.6	80.9	46.4	26.6	73.2	26.6
☒ 032	2013-218	100.0	100.0	100.0	100.0	100.0	100.0	100.0	99.7	99.3	98.8	96.7	78.9	34.6	12.5					87.3	12.5
▲ 033	2013-219	100.0	100.0	73.8	62.8	57.1	54.1	50.6	41.2	35.3	30.3	22.2	7.8	2.9	1.6	32.6	39.7	1.6			

Silt	Sand			Gravel	
	Fine	Medium	Coarse	Fine	Coarse



Highways and Public Works
Transportation Engineering Branch

LOGGED BY: B.Tyhy
REVIEWED BY:
PROJECT ENGINEER: M.Idrees

Pit #: 115-F-03
Complete: 7/4/2013 4:00:00 PM

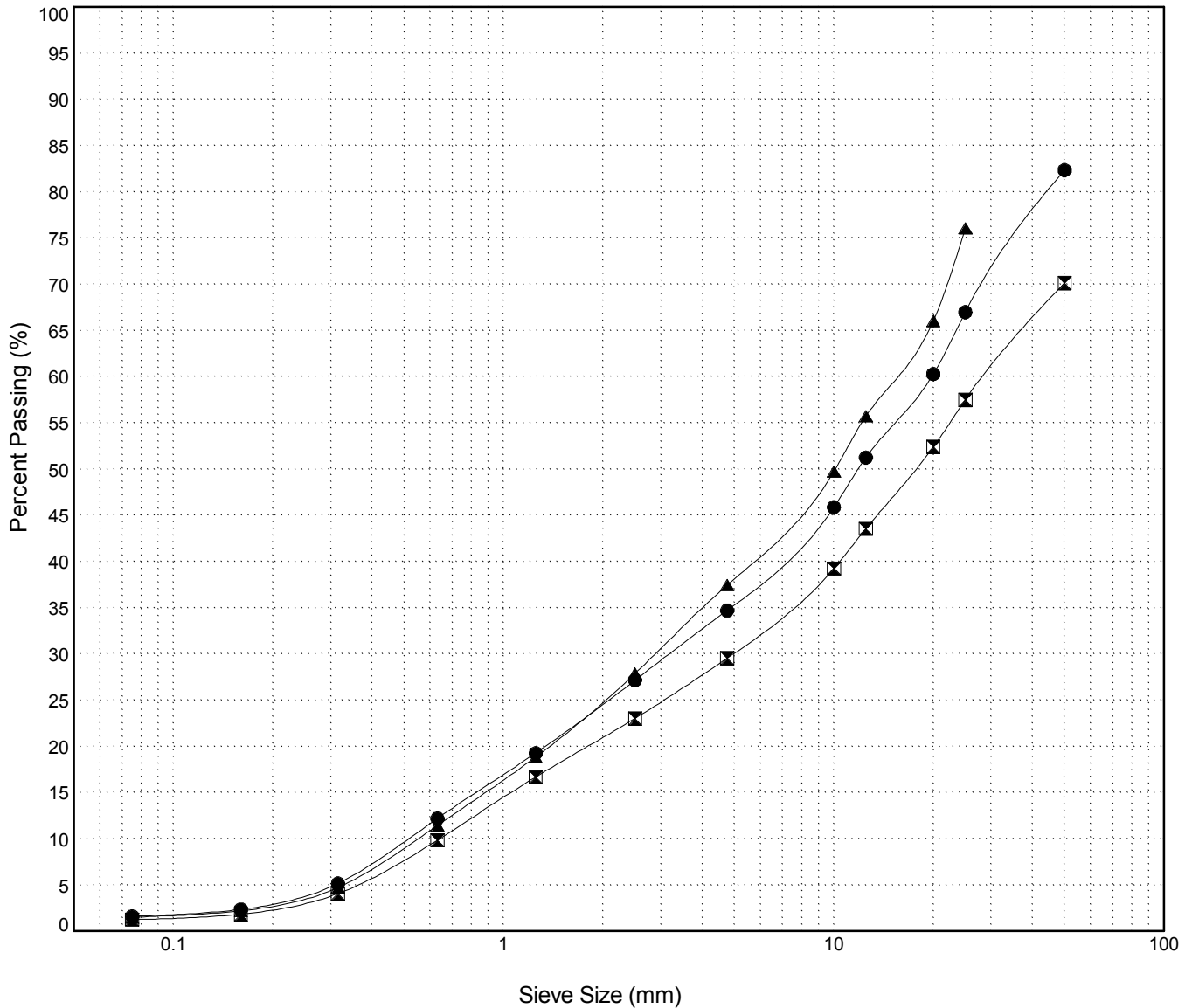
GRAIN SIZE ANALYSIS	Edith Creek Exploration	SOURCE/TP#: 804-4434
Far West Holdings	km 1782.5	PROJECT NO: 552-202101-1001 1-4
CAT Excavator 315C	Coordinates: Z07 N6852373m E549860.1m	ELEVATION: 733.6m

Master Revised July 2013

Field #	Lab #	Depth	Classification	%H2O	LL	PL	PI	Cc	Cu
● 034	2013-220	0.4 to 1.0	WELL-GRADED GRAVEL with SAND(GW)	3.1	NP	NP	NP	1.0	38.9
☒ 035	2013-221	2.0 to 2.6	WELL-GRADED GRAVEL with SAND(GW)	3.3	NP	NP	NP	1.3	44.9
▲ 036	2013-222	4.2 to 4.8	WELL-GRADED GRAVEL with SAND(GW)	3.6	NP	NP	NP	1.0	28.0

Field #	Lab #	% PASSING	Sieve Size (mm)													% Breakdown			
			100.0	80.0	50.0	25.0	20.0	12.5	10.0	5.0	2.5	1.25	0.630	0.315	0.160	0.080	Gravel	Sand	Silt
● 034	2013-220	100.0	100.0	82.3	67.0	60.3	51.2	45.9	34.7	27.2	19.3	12.2	5.2	2.4	1.6	47.6	33.1	1.6	
☒ 035	2013-221	100.0	100.0	70.1	57.5	52.4	43.5	39.2	29.5	23.0	16.7	9.9	4.1	1.8	1.3	40.6	28.3	1.3	
▲ 036	2013-222	100.0	100.0	100.0	76.0	66.0	55.7	49.7	37.4	27.9	18.8	11.4	4.7	2.2	1.5	38.6	35.9	1.5	

Silt	Sand			Gravel	
	Fine	Medium	Coarse	Fine	Coarse



Highways and Public Works
Transportation Engineering Branch

LOGGED BY: B.Tyhy
REVIEWED BY:
PROJECT ENGINEER: M.Idrees

Pit #: 115-F-03
Complete: 7/4/2013 4:45:00 PM

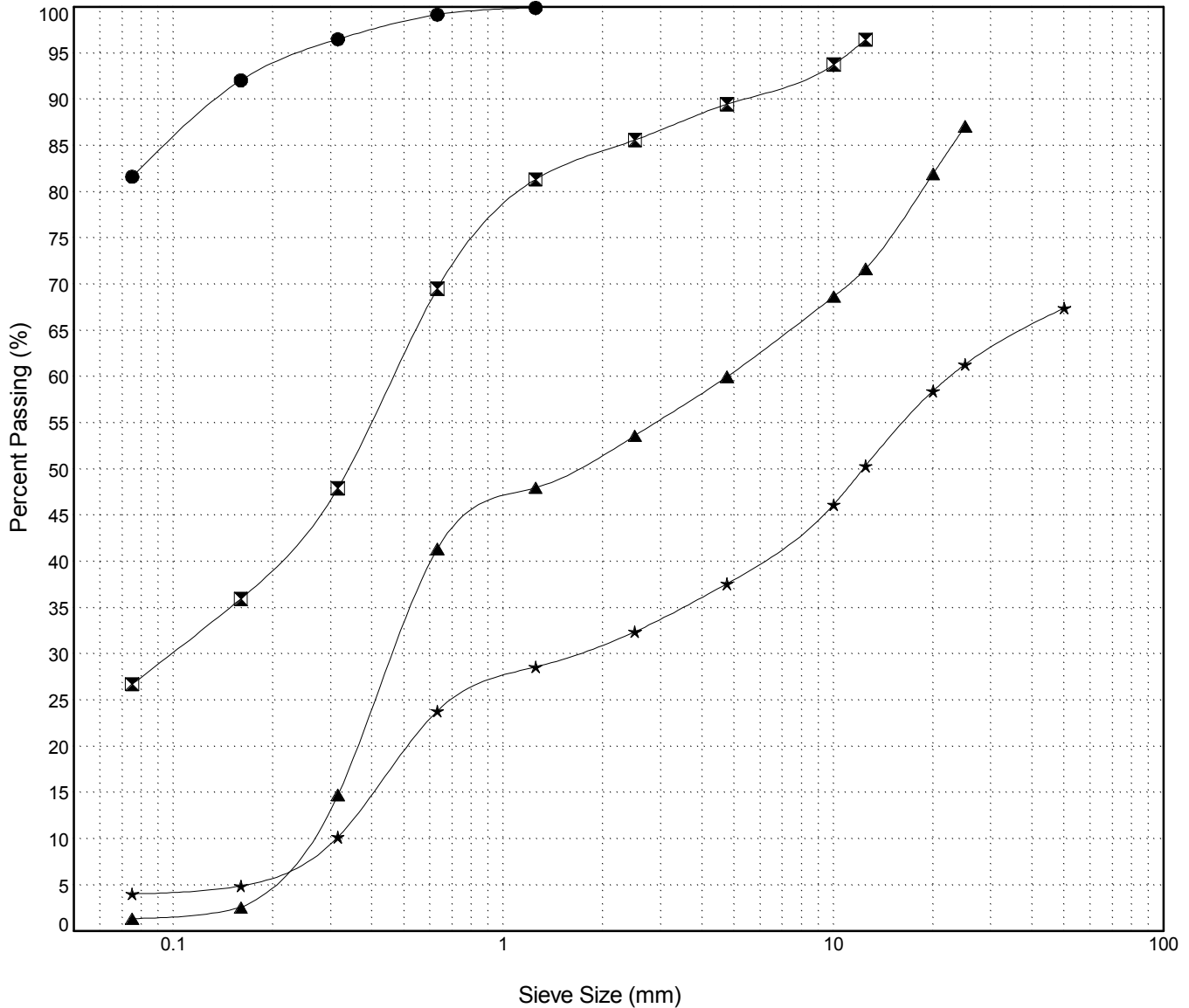
GRAIN SIZE ANALYSIS	Edith Creek Exploration	SOURCE/TP#: 804-4435
Far West Holdings	km 1782.5	PROJECT NO: 552-202101-1001 1-4
CAT Excavator 315C	Coordinates:Z07 N6852265m E550075.1m	ELEVATION: 735.5m

Master Revised July 2013

Field #	Lab #	Depth	Classification	%H2O	LL	PL	PI	Cc	Cu
● 037	2013-223	0.3 to 0.8	SILT with SAND(ML)	44.7	NP	NP	NP		
☒ 038	2013-224	1.2 to 1.7	SILTY SAND(SM)	51.0	NP	NP	NP		
▲ 039	2013-225	2.5 to 3.0	POORLY GRADED SAND with GRAVEL(SP)	14.3	NP	NP	NP	0.2	19.7
★ 040	2013-226	3.5 to 4.0	POORLY GRADED GRAVEL with SAND(GP)	10.5	NP	NP	NP	0.4	73.5

Field #	Lab #	% PASSING	Breakdown																	
			100.0	80.0	50.0	25.0	20.0	12.5	10.0	5.0	2.5	1.25	0.630	0.315	0.160	0.080	Gravel	Sand	Silt	Clay
● 037	2013-223	100.0	100.0	100.0	100.0	100.0	100.0	100.0	100.0	100.0	99.9	99.2	96.5	92.0	81.6		18.3	81.6		
☒ 038	2013-224	100.0	100.0	100.0	100.0	100.0	96.5	93.8	89.5	85.6	81.3	69.5	47.9	36.0	26.7		7.0	62.7	26.7	
▲ 039	2013-225	100.0	100.0	100.0	87.1	81.9	71.7	68.7	60.0	53.6	48.0	41.4	14.7	2.6	1.4		27.1	58.6	1.4	
★ 040	2013-226	100.0	100.0	67.4	61.3	58.4	50.3	46.2	37.6	32.4	28.6	23.8	10.2	4.9	4.0		29.8	33.6	4.0	

Silt	Sand			Gravel	
	Fine	Medium	Coarse	Fine	Coarse



Highways and Public Works
Transportation Engineering Branch

LOGGED BY: B.Tyhy
REVIEWED BY:
PROJECT ENGINEER: M.Idrees

Pit #: 115-F-03
Complete: 7/4/2013 6:00:00 PM