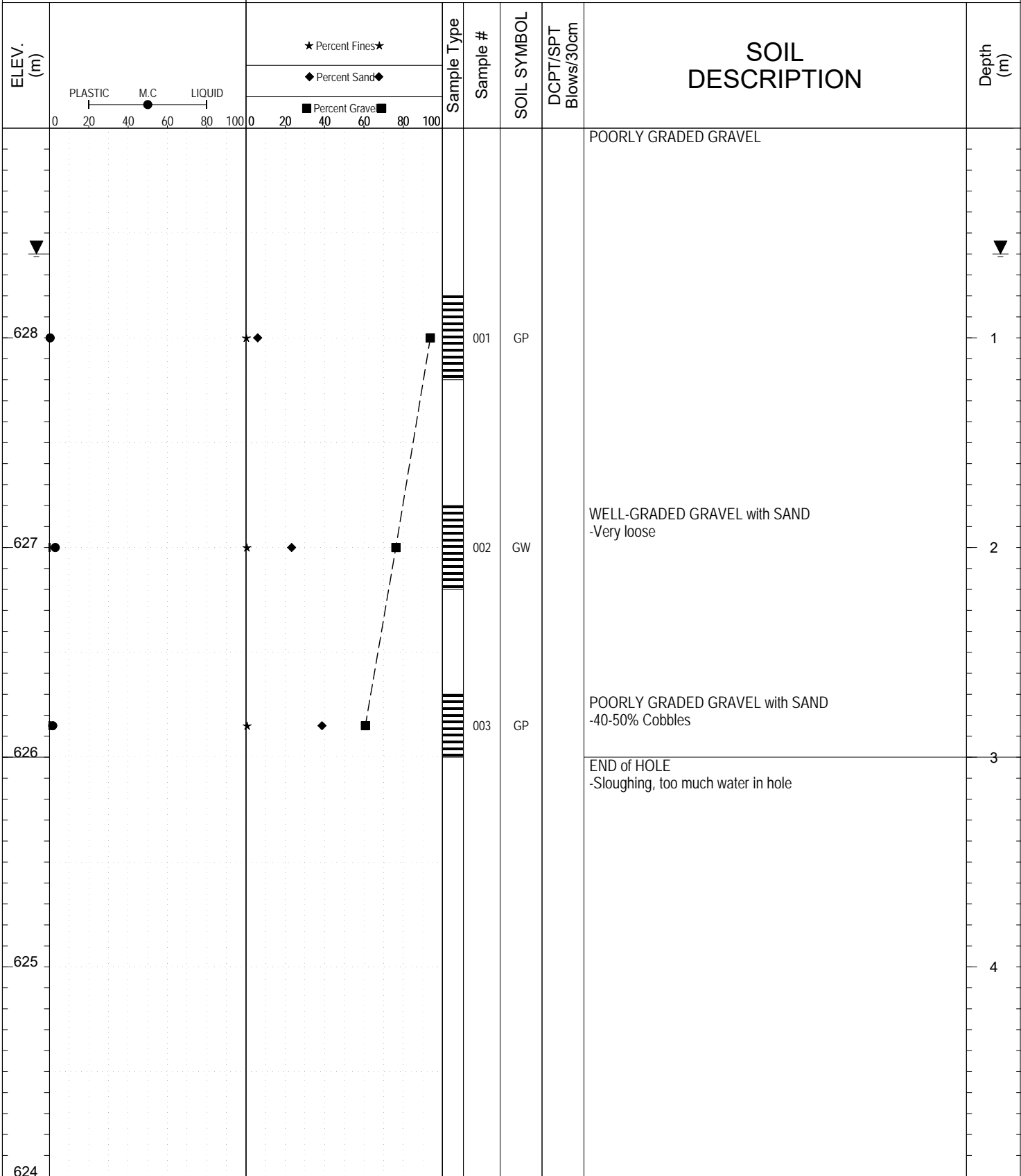


SUBSURFACE EXPLORATION AND TEST REPORT Alaska Highway SOURCE/TP#: 814-4641

Sidhu Gravel Search Alaska Hwy Pits Expansions, 1877.9 R-PROJECT NO: 552-202101-0385-1-1

Linkbelt 300 X3 Coordinates: Z07 V N6923491m E508639m ELEVATION: 629m

SAMPLE TYPE  UNDISTURBED  DCPT  AUGER  BULK  SPT  CORE



Highways and Public Works  
Transportation Engineering Branch

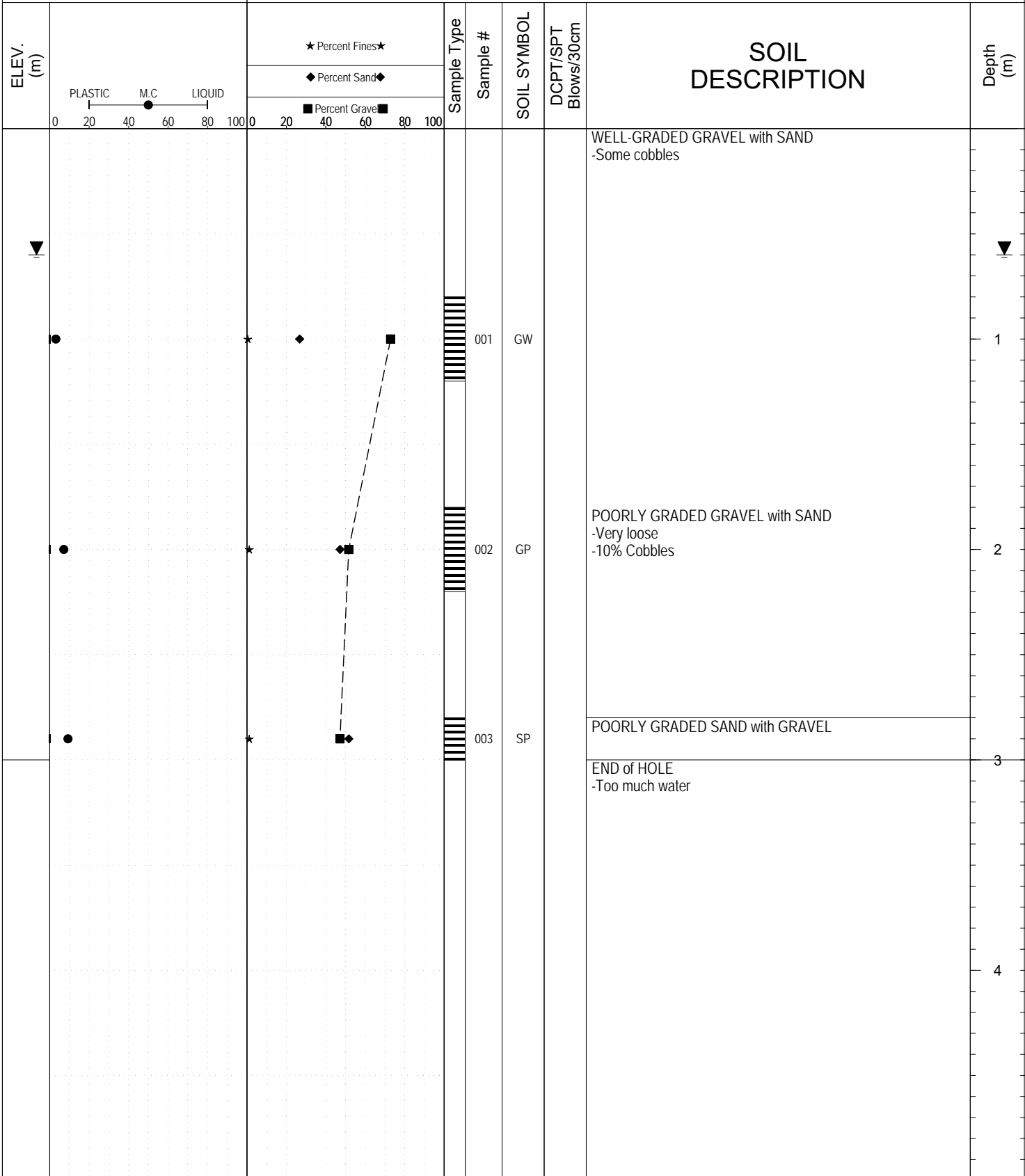
LOGGED BY: H.Kearns	Termination Depth: 3m
COMPILED BY: R.Stilwell	Complete: 9/30/2013 3:10:00 PM
REVIEWED BY: M. Idrees	Pit #: 115-K-01 Page 1 of 1

SUBSURFACE EXPLORATION AND TEST REPORT Alaska Highway SOURCE/TP#: 814-4642

Sidhu Gravel Search Alaska Hwy Pits Expansions, 1877.9 R-PROJECT NO: 552-202101-0385-1-1

Linkbelt 300 X3 Coordinates: Z07 V N6923299m E508560m ELEVATION: m

SAMPLE TYPE  UNDISTURBED  DCPT  AUGER  BULK  SPT  CORE



Highways and Public Works  
Transportation Engineering Branch

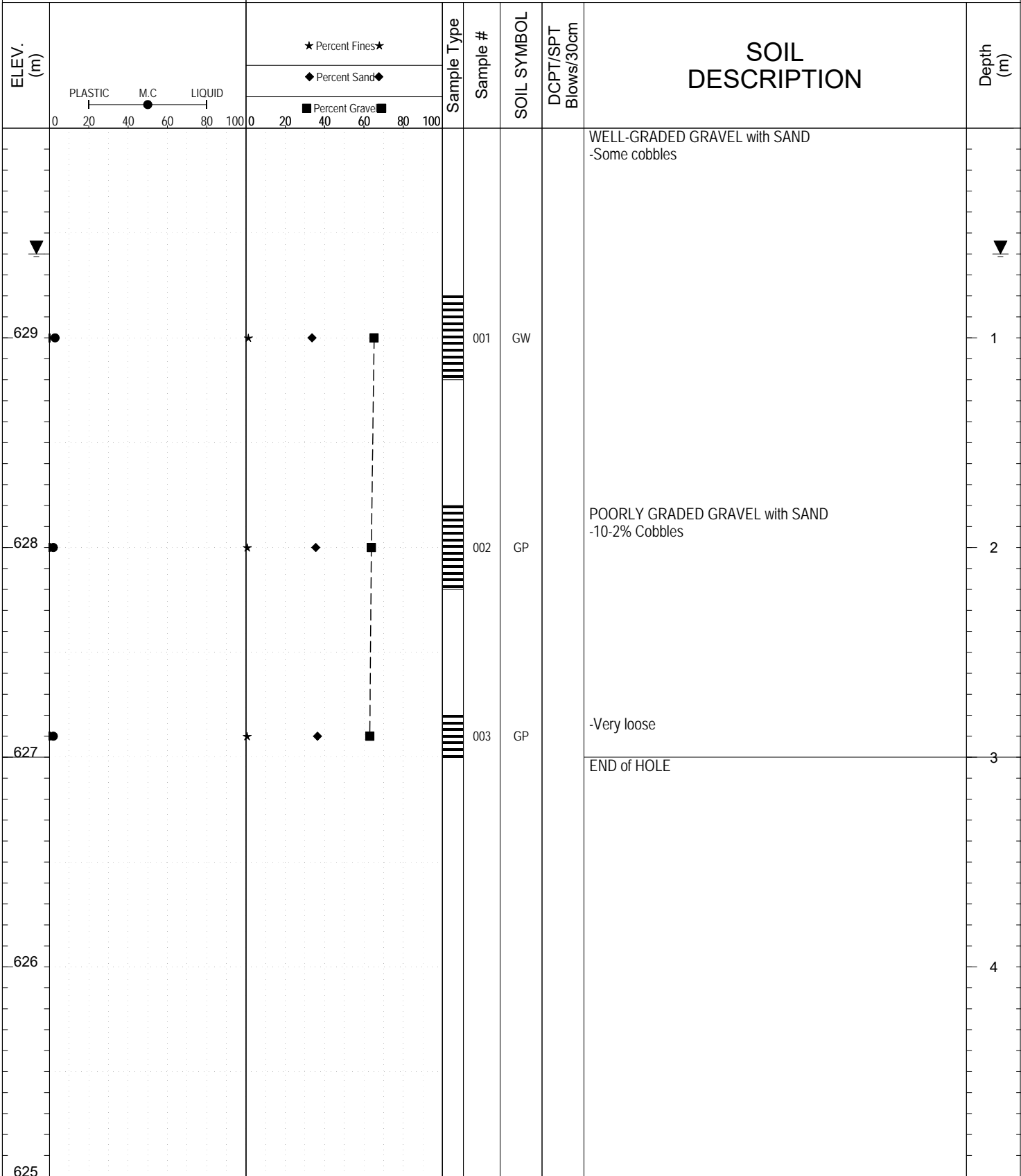
LOGGED BY: H.Kearns Termination Depth: 3m  
 COMPILED BY: R.Stilwell Complete: 9/30/2013 4:00:00 PM  
 REVIEWED BY: M. Idrees Pit #: 115-K-01 Page 1 of 1

SUBSURFACE EXPLORATION AND TEST REPORT Alaska Highway SOURCE/TP#: 814-4643

Sidhu Gravel Search Alaska Hwy Pits Expansions, 1877.9 R-PROJECT NO: 552-202101-0385-1-1

Linkbelt 300 X3 Coordinates: Z07 V N6923158m E508478m ELEVATION: 630m

SAMPLE TYPE  UNDISTURBED  DCPT  AUGER  BULK  SPT  CORE



Highways and Public Works  
Transportation Engineering Branch

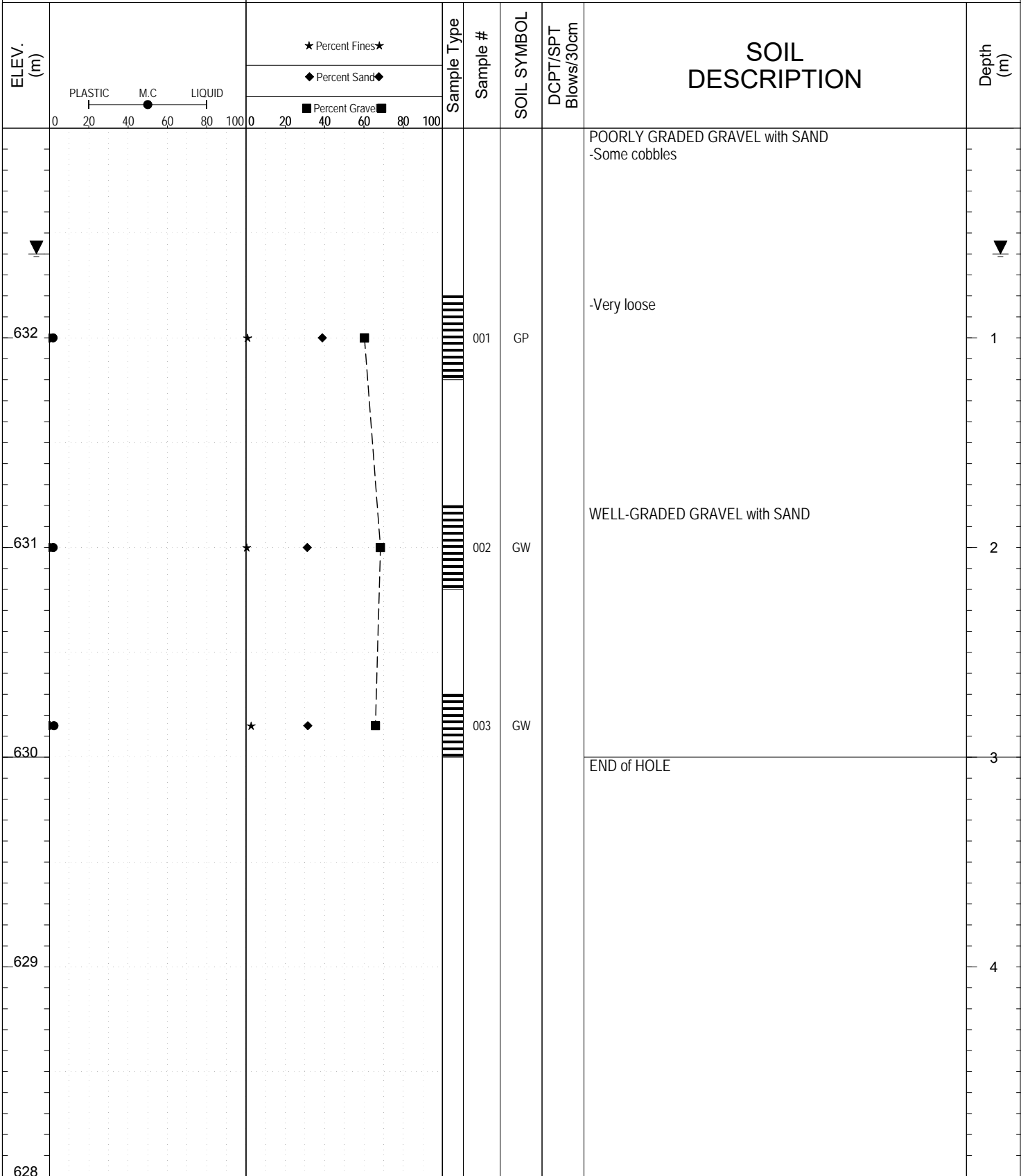
LOGGED BY: H.Kearns	Termination Depth: 3m
COMPILED BY: R.Stilwell	Complete: 9/30/2013 5:00:00 PM
REVIEWED BY: M. Idrees	Pit #: 115-K-01 Page 1 of 1

SUBSURFACE EXPLORATION AND TEST REPORT Alaska Highway SOURCE/TP#: 814-4644

Sidhu Gravel Search Alaska Hwy Pits Expansions, 1877.9 R-PROJECT NO: 552-202101-0385-1-1

Linkbelt 300 X3 Coordinates: Z07 V N6923319m E508487m ELEVATION: 633m

SAMPLE TYPE  UNDISTURBED  DCPT  AUGER  BULK  SPT  CORE



Highways and Public Works  
Transportation Engineering Branch

LOGGED BY: H.Kearns Termination Depth: 3m  
 COMPILED BY: R.Stilwell Complete:  
 REVIEWED BY: M. Idrees Pit #: 115-K-01 Page 1 of 1

GRAIN SIZE ANALYSIS	Gravel Search Alaska Hwy Pits Expansions	SOURCE/TP#: 814-4641
Sidhu	1877.9 RHS	PROJECT NO: 552-202101-0385-1-1
Linkbelt 300 X3	Coordinates: Z07 V N6923491m E508639m	ELEVATION: 629m

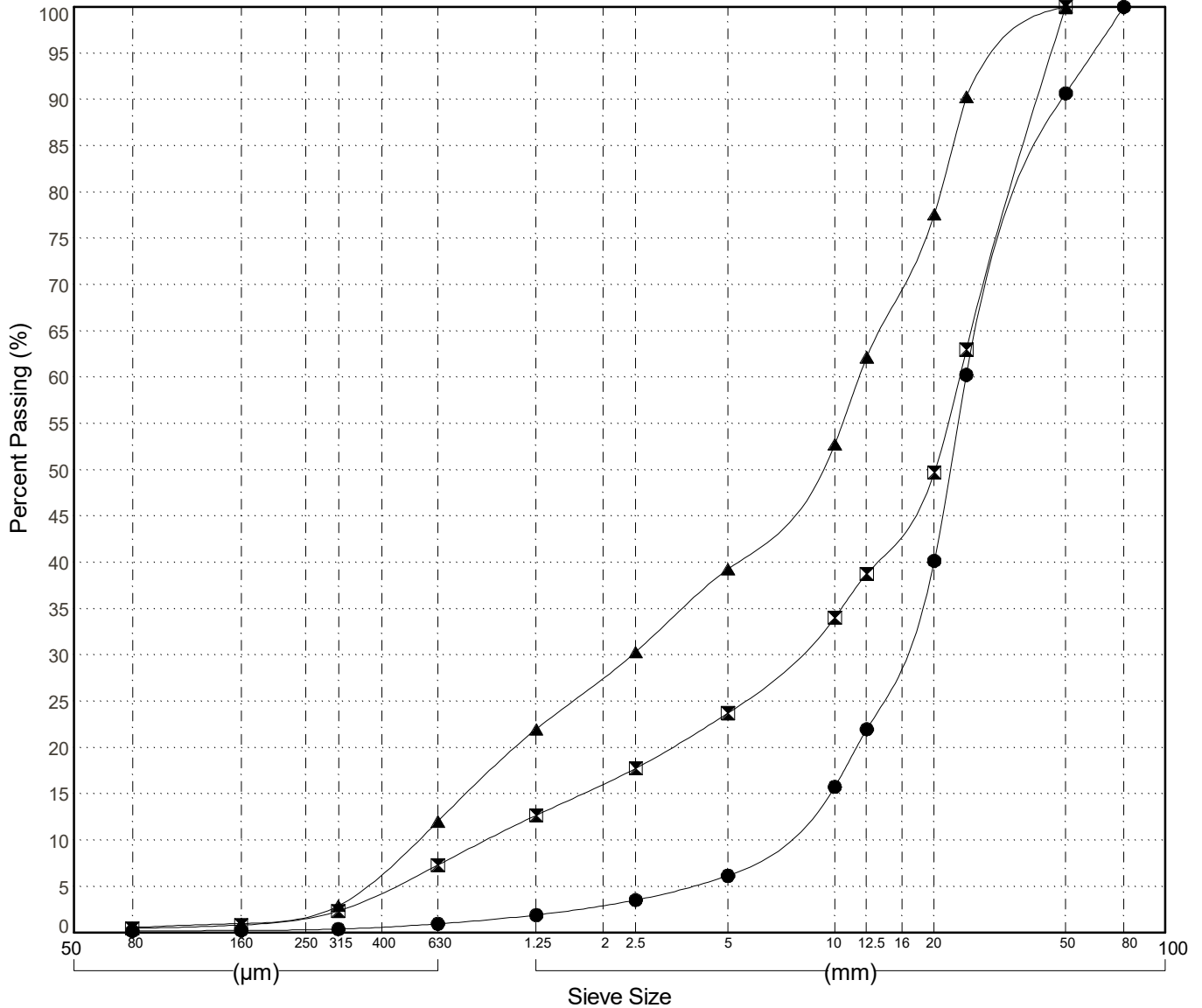
Master Revised June 2017

Field#	Lab#	Depth	Classification	%H2O	LL	PL	PI	Cc	Cu	D10
● 001	1009	0.8 to 1.2	POORLY GRADED GRAVEL(GP)	0.3	NP	NP	NP	1.5	3.9	6.39
☒ 002	1010	1.8 to 2.2	WELL-GRADED GRAVEL with SAND(GW)	2.9	NP	NP	NP	2.6	26.8	0.89
▲ 003	1011	2.7 to 3.0	POORLY GRADED GRAVEL with SAND(GP)	1.6	NP	NP	NP	0.9	22.0	0.54

Field#	Lab#	100.0	80.0	50.0	25.0	20.0	12.5	10.0	5.0	2.5	1.25	0.630	0.315	0.160	0.080	%Breakdown				
																Gravel	Sand	Silt	Clay	
●	001	1009	100.0	100.0	90.7	60.3	40.2	22.0	15.8	6.2	3.5	1.9	1.0	0.4	0.3	0.2	93.8	6.0	0.2	
☒	002	1010	100.0	100.0	100.0	63.0	49.7	38.8	34.0	23.7	17.8	12.7	7.3	2.4	0.8	0.5	76.3	23.2	0.5	
▲	003	1011	100.0	100.0	100.0	90.3	77.6	62.2	52.8	39.3	30.3	22.0	12.0	2.9	1.0	0.6	60.7	38.7	0.6	

Silt	Sand			Gravel	
	Fine	Medium	Coarse	Fine	Coarse



Highways and Public Works  
Transportation Engineering Branch

LOGGED BY: H.Kearns  
COMPILED BY: R.Stilwell  
REVIEWED BY: M. Idrees

Pit # 115-K-01  
Complete: 9/30/2013 3:10:00 PM

GRAIN SIZE ANALYSIS	Gravel Search Alaska Hwy Pits Expansions	SOURCE/TP#: 814-4642
Sidhu	1877.9 RHS	PROJECT NO: 552-202101-0385-1-1
Linkbelt 300 X3	Coordinates: Z07 V N6923299m E508560m	ELEVATION: m

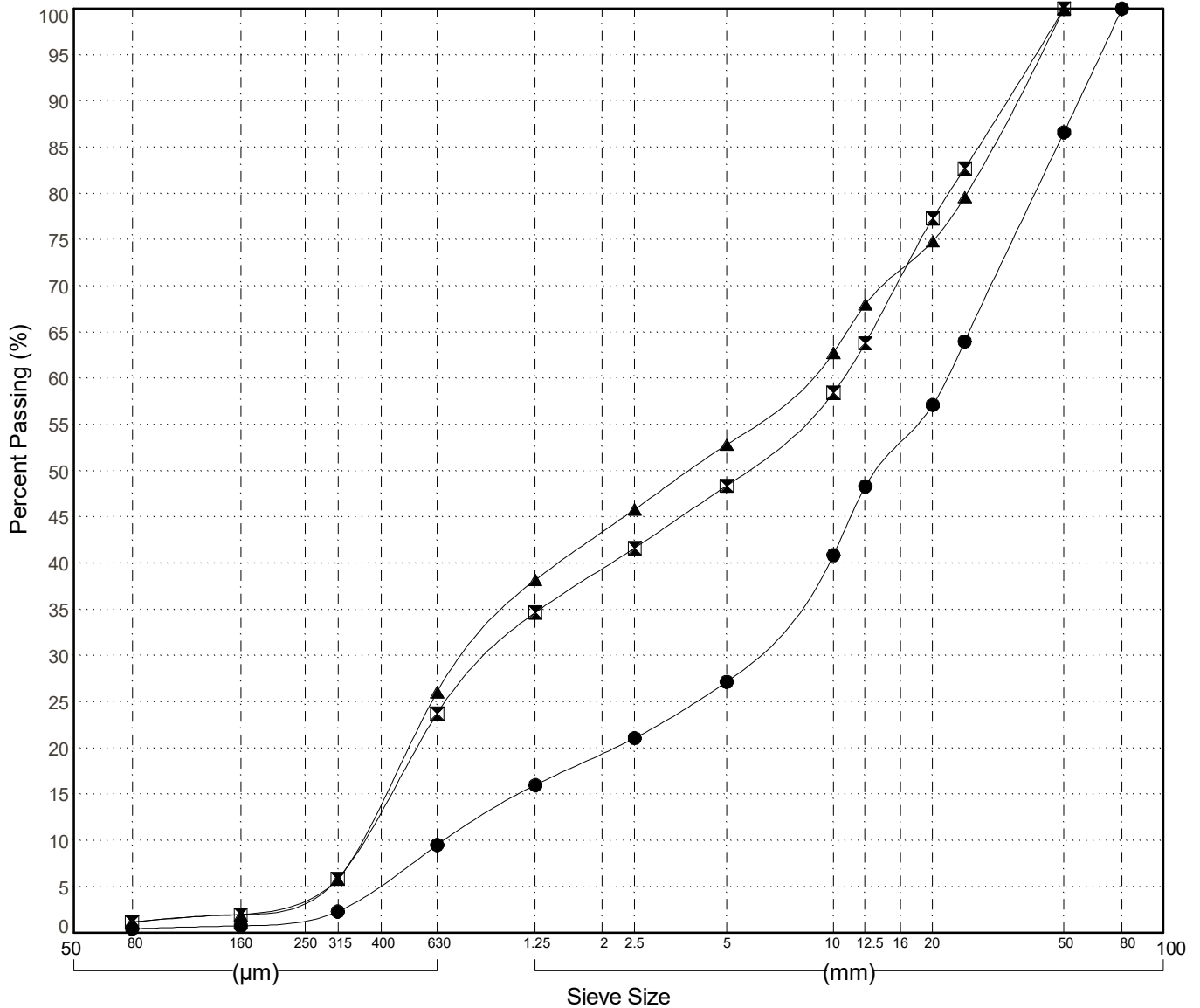
Master Revised June 2017

Field#	Lab#	Depth	Classification	%H2O	LL	PL	PI	Cc	Cu	D10
● 001	1012	0.8 to 1.2	WELL-GRADED GRAVEL with SAND(GW)	3.1	NP	NP	NP	2.1	33.2	0.66
☒ 002	1013	1.8 to 2.2	POORLY GRADED GRAVEL with SAND(GP)	7.2	NP	NP	NP	0.2	28.9	0.37
▲ 003	1014	2.8 to 3.0	POORLY GRADED SAND with GRAVEL(SP)	9.3	NP	NP	NP	0.2	22.3	0.36

Field#	Lab#	100.0	80.0	50.0	25.0	20.0	12.5	10.0	5.0	2.5	1.25	0.630	0.315	0.160	0.080	% Breakdown			
																Gravel	Sand	Silt	Clay
●	001	1012	100.0	100.0	86.6	64.0	57.1	48.3	40.9	27.2	21.1	16.0	9.5	2.3	0.8	0.4	72.8	26.7	0.4
☒	002	1013	100.0	100.0	100.0	82.7	77.3	63.8	58.4	48.4	41.7	34.7	23.7	5.9	2.0	1.2	51.6	47.2	1.2
▲	003	1014	100.0	100.0	100.0	79.6	74.8	68.0	62.8	52.8	45.8	38.2	26.1	5.8	1.9	1.2	47.2	51.6	1.2

Silt	Sand			Gravel	
	Fine	Medium	Coarse	Fine	Coarse



Highways and Public Works  
Transportation Engineering Branch

LOGGED BY: H.Kearns  
COMPILED BY: R.Stilwell  
REVIEWED BY: M. Idrees

Pit # 115-K-01  
Complete: 9/30/2013 4:00:00 PM

GRAIN SIZE ANALYSIS	Gravel Search Alaska Hwy Pits Expansions	SOURCE/TP#: 814-4643
Sidhu	1877.9 RHS	PROJECT NO: 552-202101-0385-1-1
Linkbelt 300 X3	Coordinates: Z07 V N6923158m E508478m	ELEVATION: 630m

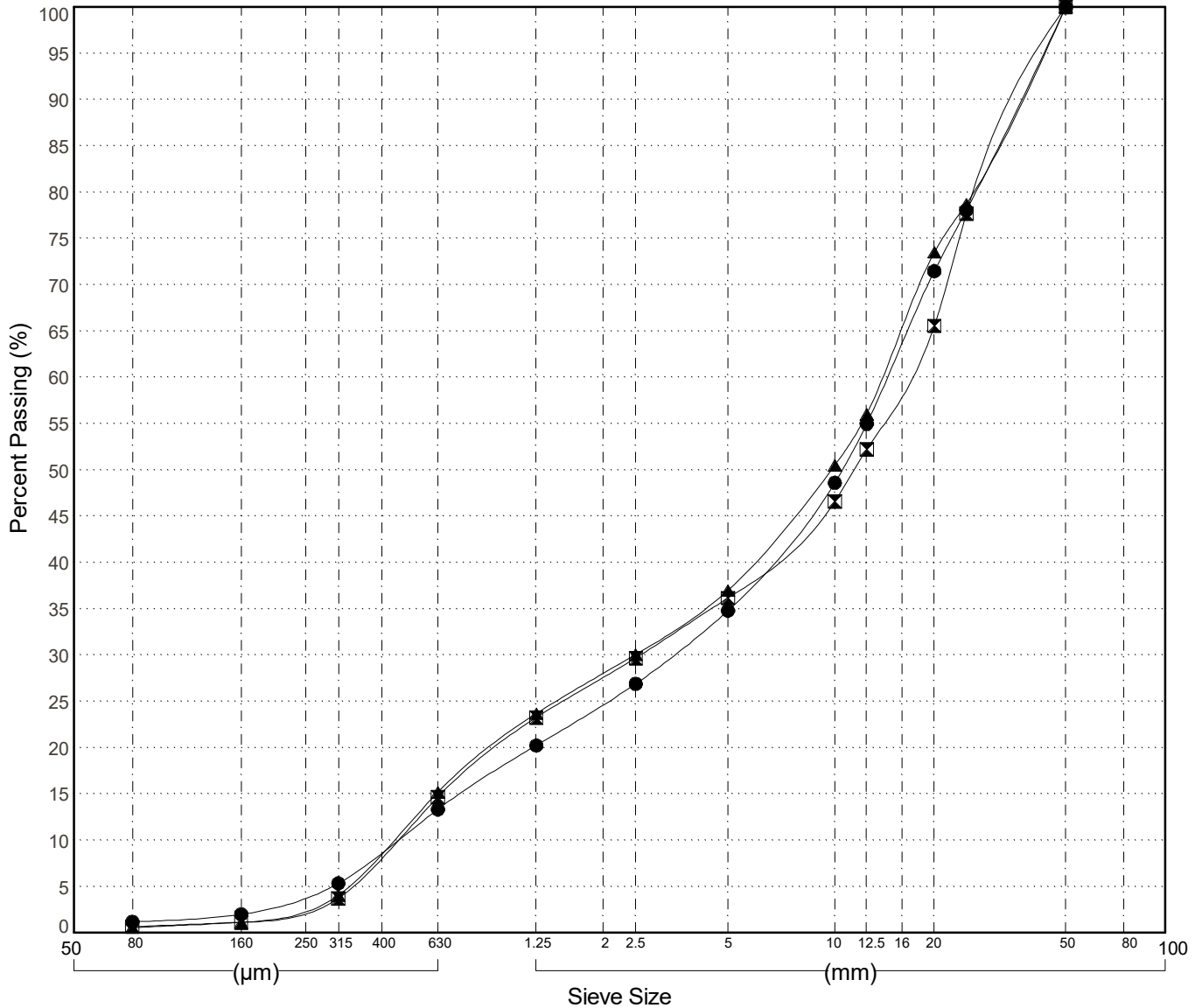
Master Revised June 2017

Field#	Lab#	Depth	Classification	%H2O	LL	PL	PI	Cc	Cu	D10
● 001	1015	0.8 to 1.2	WELL-GRADED GRAVEL with SAND(GW)	2.8	NP	NP	NP	1.5	30.6	0.47
☒ 002	1016	1.8 to 2.2	POORLY GRADED GRAVEL with SAND(GP)	1.9	NP	NP	NP	0.9	35.1	0.47
▲ 003	1017	2.8 to 3.0	POORLY GRADED GRAVEL with SAND(GP)	1.9	NP	NP	NP	1.0	30.5	0.46

Field#	Lab#	% PASSING	Sieve Size (mm)													% Breakdown				
			100.0	80.0	50.0	25.0	20.0	12.5	10.0	5.0	2.5	1.25	0.630	0.315	0.160	0.080	Gravel	Sand	Silt	Clay
●	001	1015	100.0	100.0	100.0	78.0	71.5	55.0	48.6	34.8	26.9	20.2	13.3	5.3	2.0	1.2	65.2	33.6		1.2
☒	002	1016	100.0	100.0	100.0	77.7	65.6	52.2	46.6	36.2	29.7	23.3	14.7	3.7	1.1	0.7	63.8	35.5		0.7
▲	003	1017	100.0	100.0	100.0	78.7	73.5	56.0	50.5	37.0	30.1	23.7	15.2	4.1	1.1	0.6	63.0	36.4		0.6

Silt	Sand			Gravel	
	Fine	Medium	Coarse	Fine	Coarse



Highways and Public Works  
Transportation Engineering Branch

LOGGED BY: H.Kearns  
COMPILED BY: R.Stilwell  
REVIEWED BY: M. Idrees

Pit # 115-K-01  
Complete: 9/30/2013 5:00:00 PM

GRAIN SIZE ANALYSIS	Gravel Search Alaska Hwy Pits Expansions	SOURCE/TP#: 814-4644
Sidhu	1877.9 RHS	PROJECT NO: 552-202101-0385-1-1
Linkbelt 300 X3	Coordinates: Z07 V N6923319m E508487m	ELEVATION: 633m

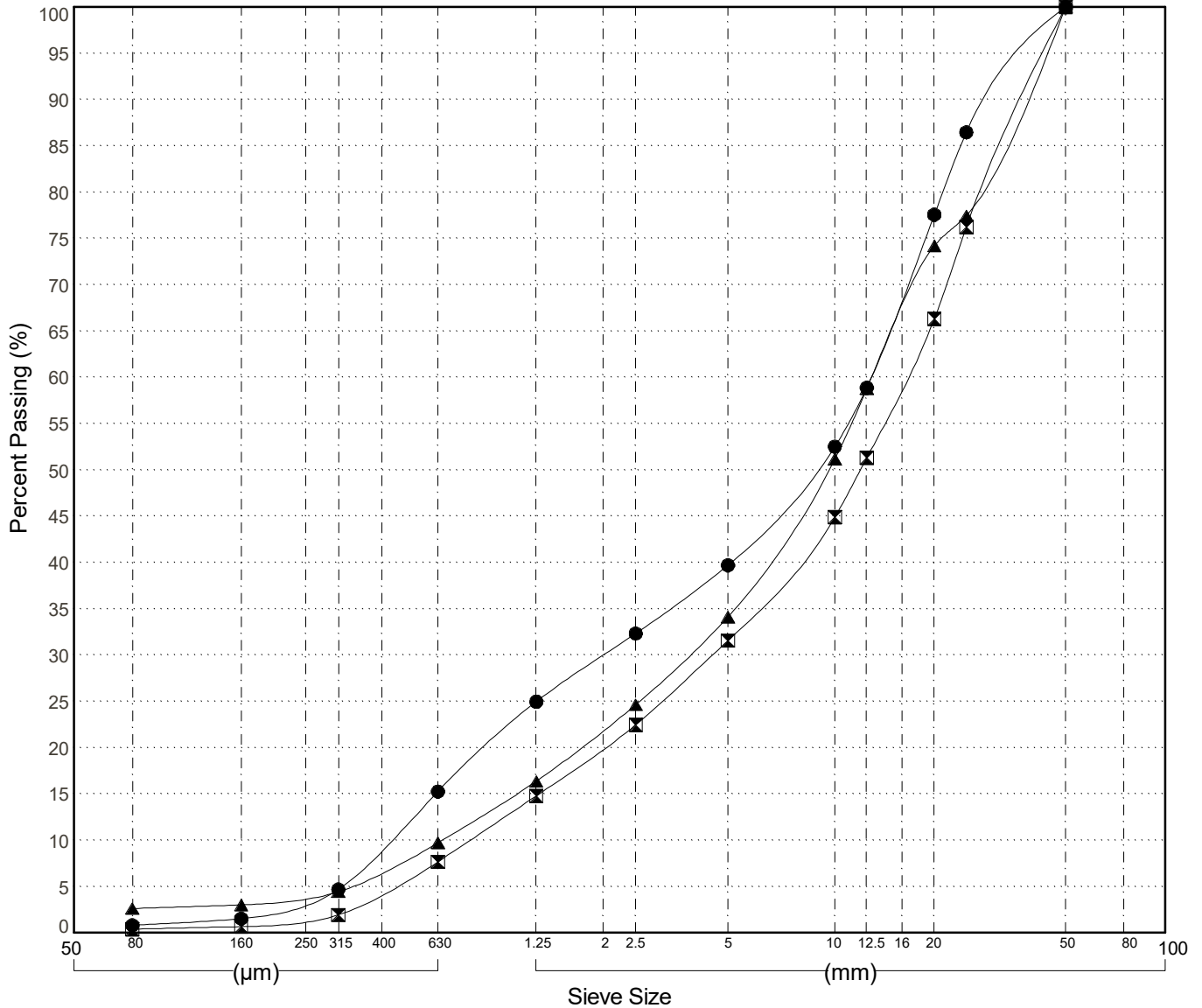
Master Revised June 2017

Field#	Lab#	Depth	Classification	%H2O	LL	PL	PI	Cc	Cu	D10
● 001	1018	0.8 to 1.2	POORLY GRADED GRAVEL with SAND(GP)	1.8	NP	NP	NP	0.7	28.8	0.45
☒ 002	1019	1.8 to 2.2	WELL-GRADED GRAVEL with SAND(GW)	1.8	NP	NP	NP	1.4	20.8	0.79
▲ 003	1020	2.7 to 3.0	WELL-GRADED GRAVEL with SAND(GW)	2.2	NP	NP	NP	1.5	20.0	0.65

Field#	Lab#	100.0	80.0	50.0	25.0	20.0	12.5	10.0	5.0	2.5	1.25	0.630	0.315	0.160	0.080	% Breakdown			
																Gravel	Sand	Silt	Clay
●	001	1018	100.0	100.0	100.0	86.5	77.6	58.9	52.5	39.7	32.3	25.0	15.3	4.7	1.5	0.8	60.3	38.9	0.8
☒	002	1019	100.0	100.0	100.0	76.2	66.3	51.3	44.9	31.6	22.5	14.8	7.7	1.9	0.7	0.4	68.4	31.2	0.4
▲	003	1020	100.0	100.0	100.0	77.5	74.2	58.8	51.2	34.1	24.6	16.4	9.7	4.4	3.0	2.6	65.9	31.5	2.6

Silt	Sand			Gravel	
	Fine	Medium	Coarse	Fine	Coarse



Highways and Public Works  
Transportation Engineering Branch

LOGGED BY: H.Kearns  
COMPILED BY: R.Stilwell  
REVIEWED BY: M. Idrees

Pit # 115-K-01  
Complete: