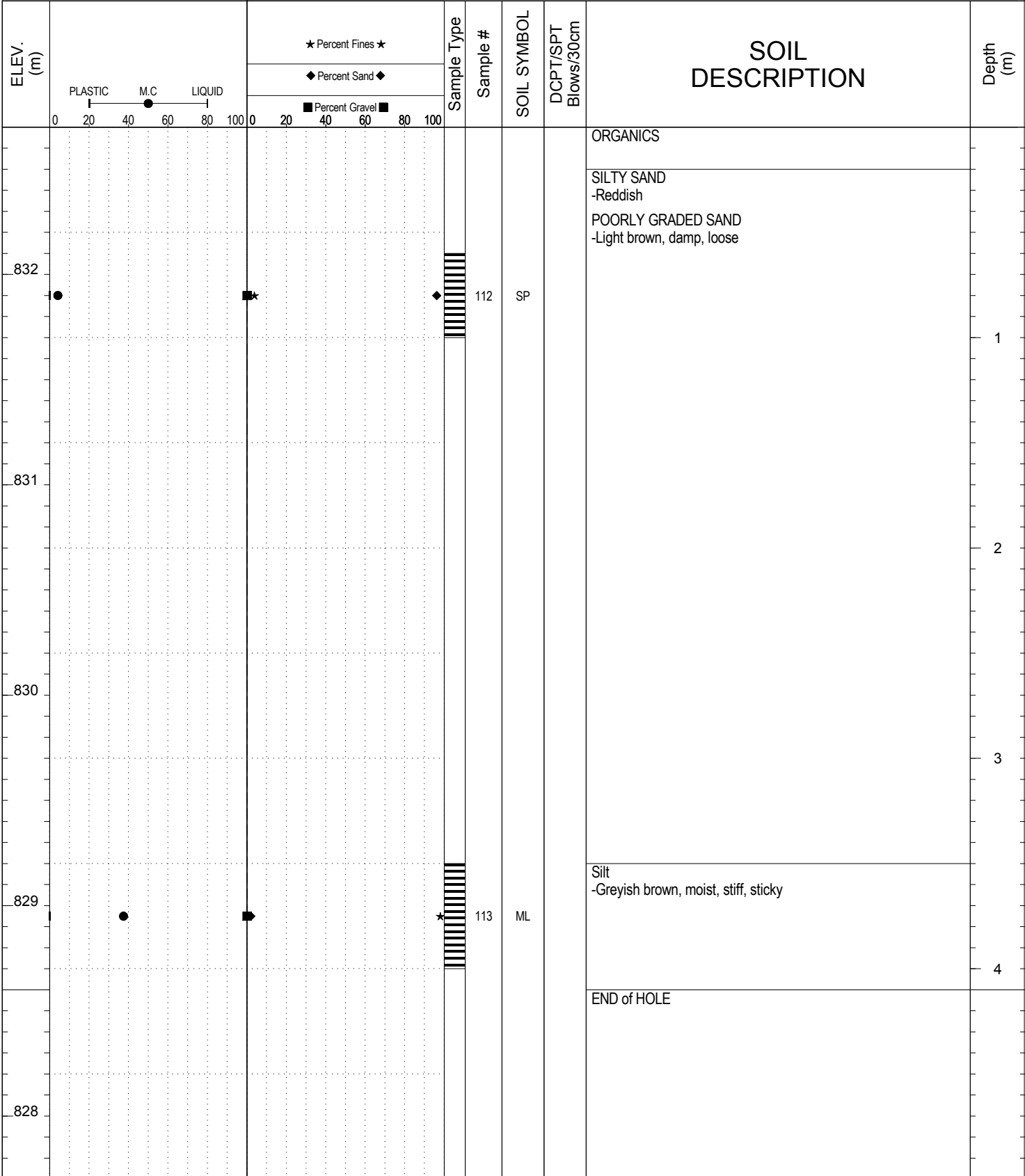


SUBSURFACE EXPLORATION AND TEST REPORT Campbell Highway SOURCE/TP#: 826-4697

J. Magun Site #6 Campbell Highway Gravel Search km 70-90, km 7 PROJECT NO: 552-202104-2035-0661-5

Hitachi 200 LC Coordinates: Z09 N6722649.7m E489260.5m ELEVATION: 832.7m

SAMPLE TYPE UNDISTURBED DCPT AUGER BULK SPT CORE

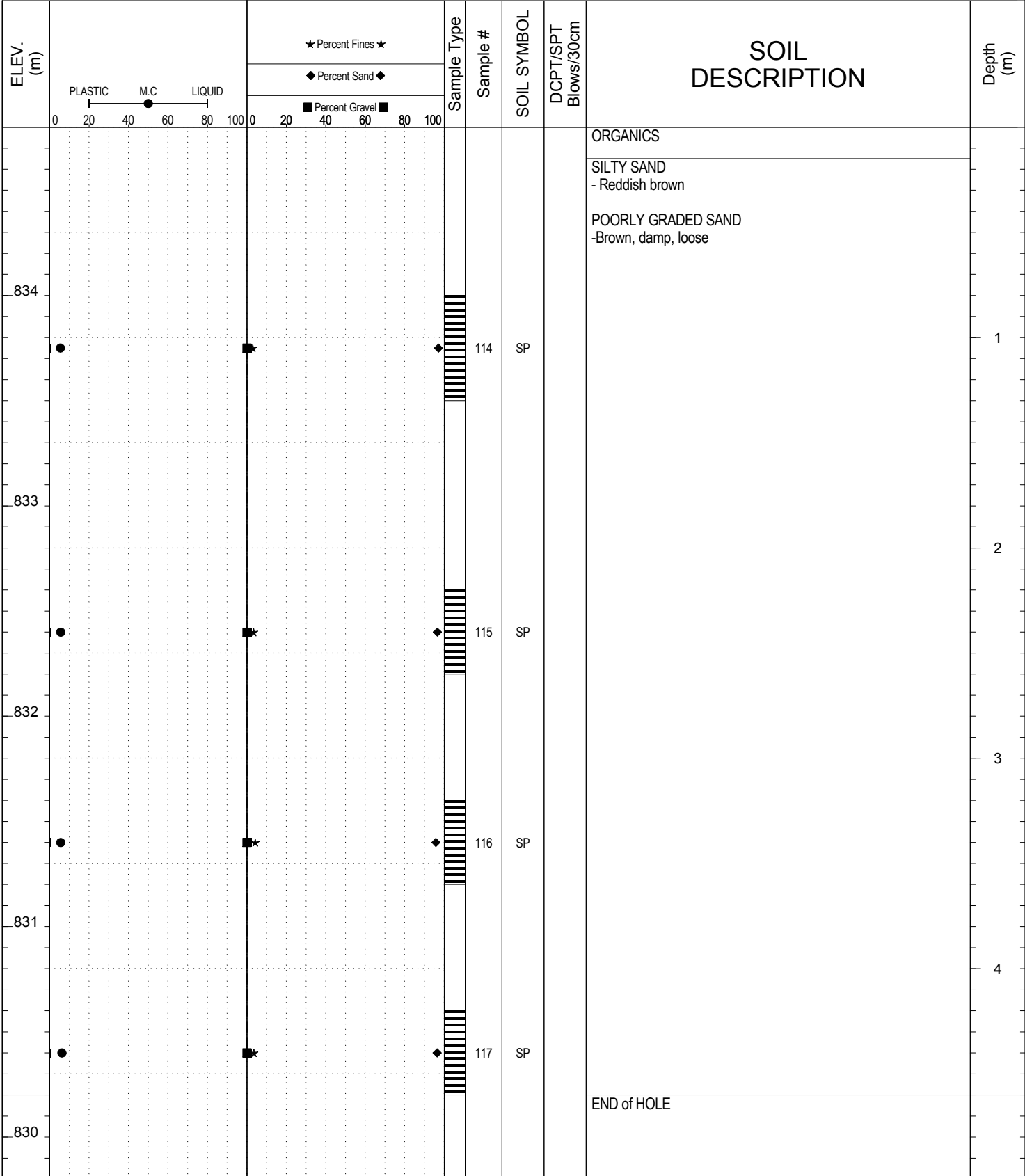


SUBSURFACE EXPLORATION AND TEST REPORT Campbell Highway SOURCE/TP#: 826-4698

J. Magun Site #6 Campbell Highway Gravel Search km 70-90, km 7 PROJECT NO: 552-202104-2035-0661-5

Hitachi 200 LC Coordinates: Z09 N6722801.4m E489244.1m ELEVATION: 834.8m

SAMPLE TYPE UNDISTURBED DCPT AUGER BULK SPT CORE

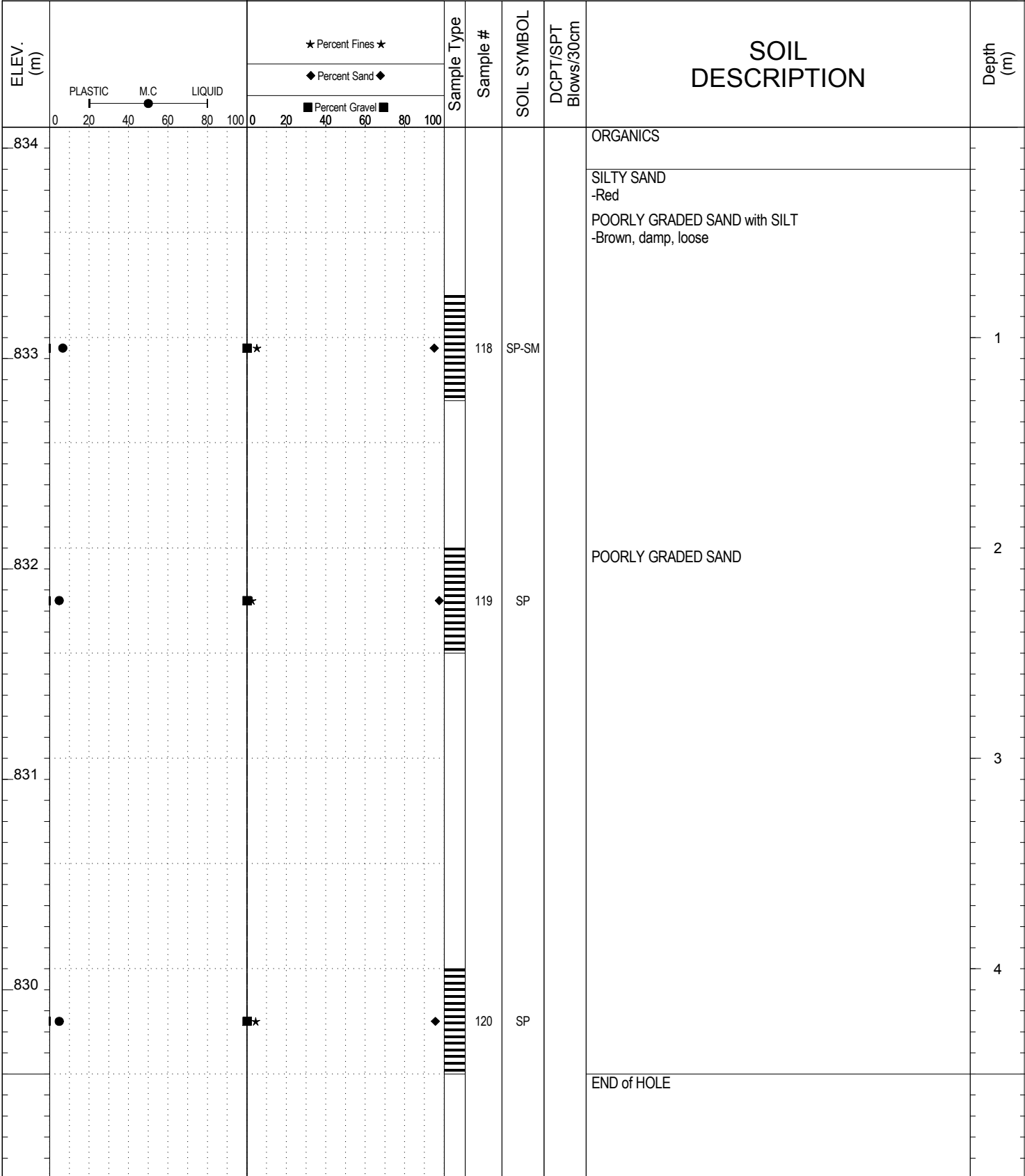


SUBSURFACE EXPLORATION AND TEST REPORT Campbell Highway SOURCE/TP#: 826-4699

J.Magun Site #6 Campbell Highway Gravel Search km 70-90, km 7 PROJECT NO: 552-202104-2035-0661-5

Hitachi 200 LC Coordinates: Z09 N6722881.7m E489260.9m ELEVATION: 834.1m

SAMPLE TYPE UNDISTURBED DCPT AUGER BULK SPT CORE

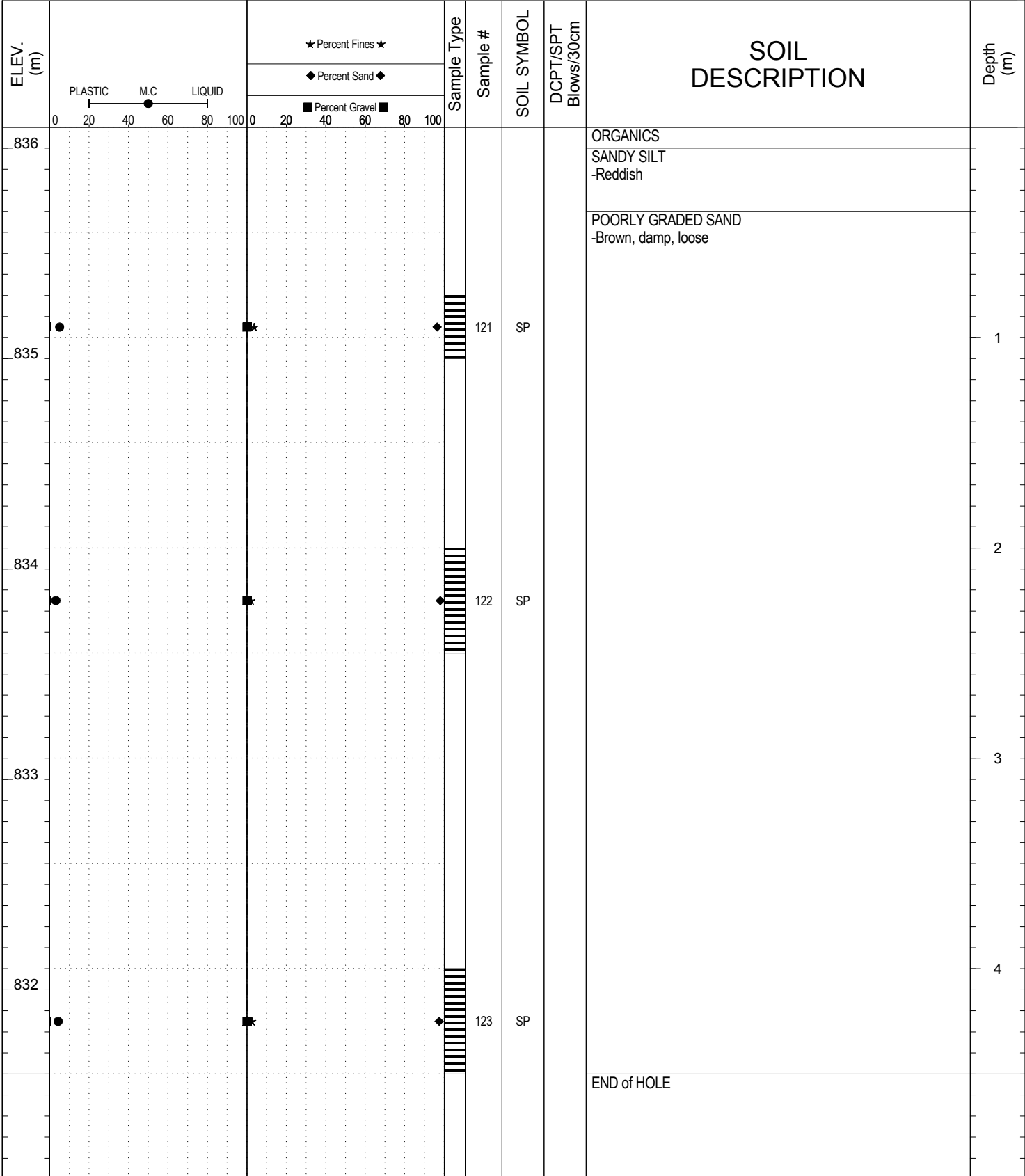


SUBSURFACE EXPLORATION AND TEST REPORT Campbell Highway SOURCE/TP#: 826-4700

J. Magun Site #6 Campbell Highway Gravel Search km 70-90, km 7 PROJECT NO: 552-202104-2035-0661-5

Hitachi 200 LC Coordinates: Z09 N6722899.1m E489180.1m ELEVATION: 836.1m

SAMPLE TYPE UNDISTURBED DCPT AUGER BULK SPT CORE

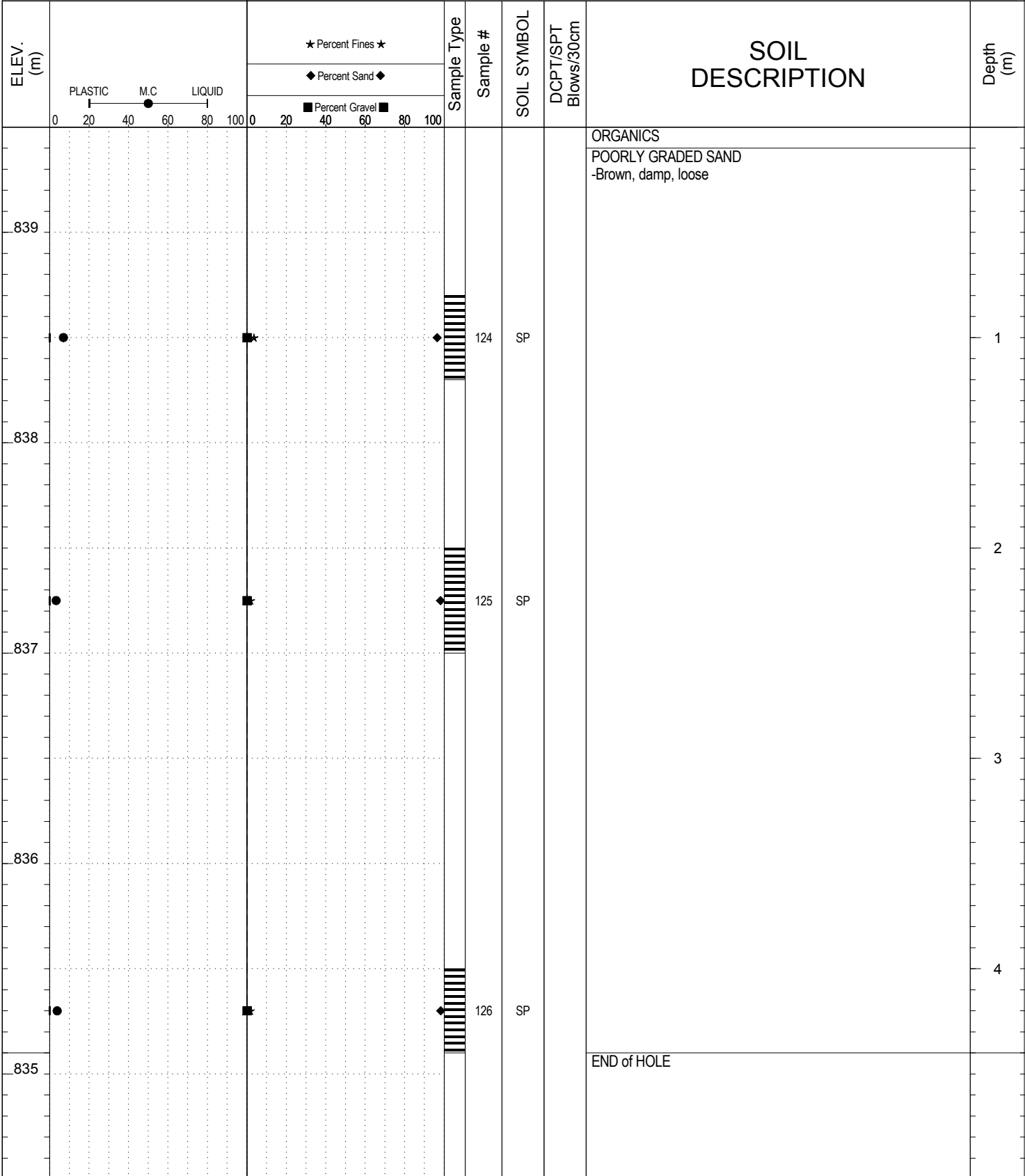


SUBSURFACE EXPLORATION AND TEST REPORT Campbell Highway SOURCE/TP#: 826-4701

J. Magun Site #6 Campbell Highway Gravel Search km 70-90, km 7 PROJECT NO: 552-202104-2035-0661-5

Hitachi 200 LC Coordinates: Z09 N6722923.7m E489091m ELEVATION: 839.5m

SAMPLE TYPE UNDISTURBED DCPT AUGER BULK SPT CORE

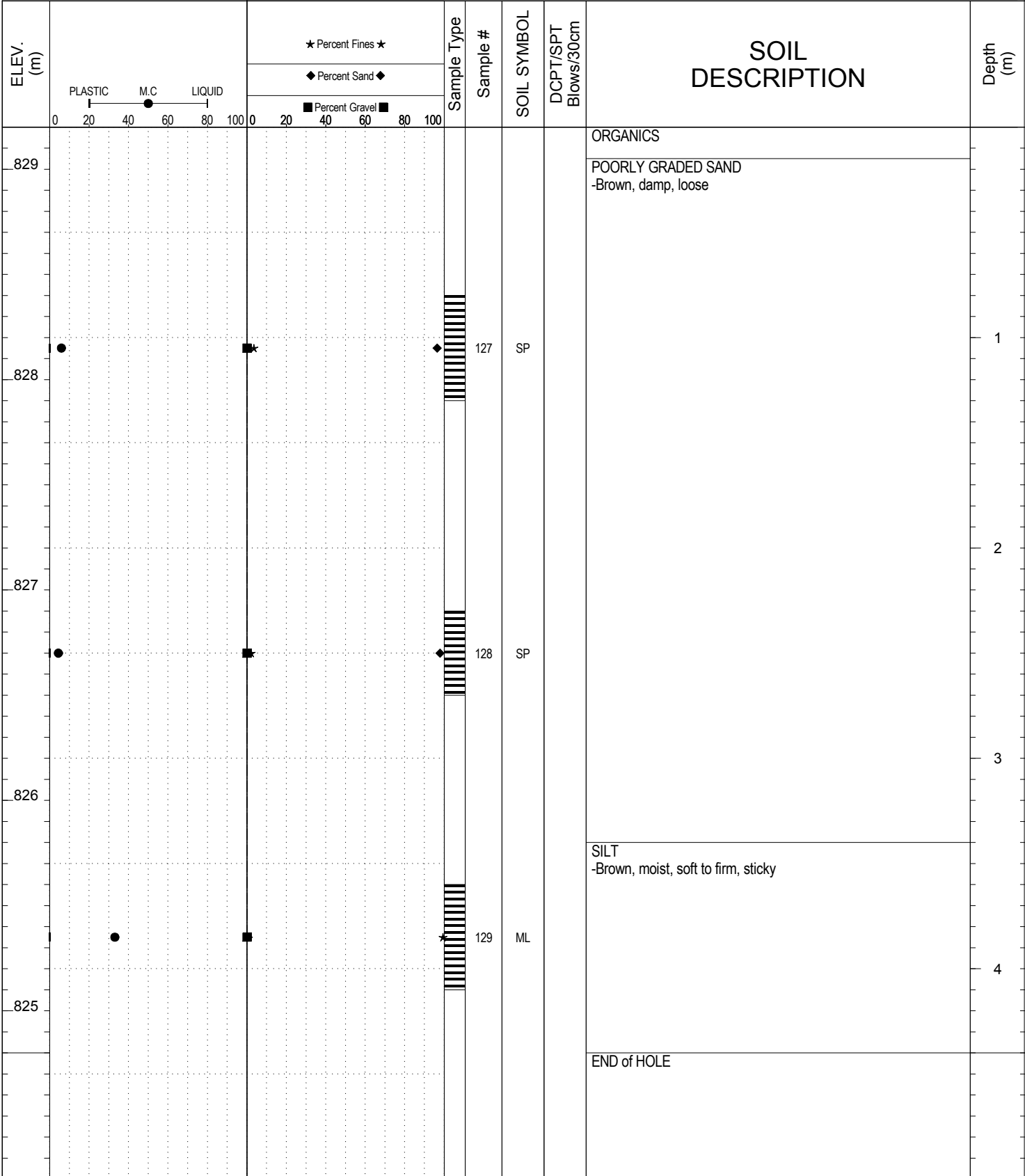


SUBSURFACE EXPLORATION AND TEST REPORT Campbell Highway SOURCE/TP#: 826-4702

J. Magun Site #6 Campbell Highway Gravel Search km 70-90, km 7 PROJECT NO: 552-202104-2035-0661-5

Hitachi 200 LC Coordinates: Z09 N6722811.4m E489050.9m ELEVATION: 829.2m

SAMPLE TYPE UNDISTURBED DCPT AUGER BULK SPT CORE

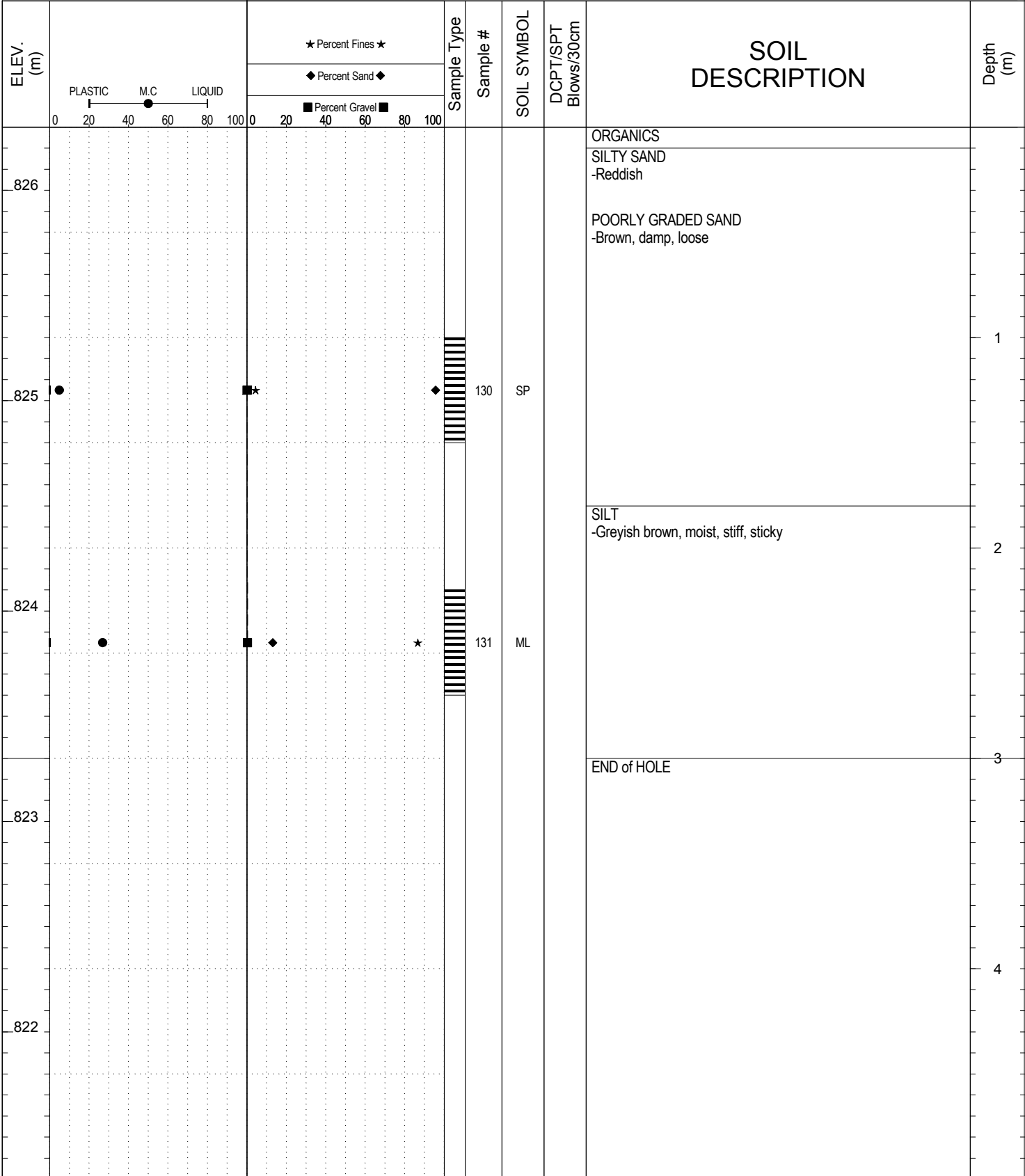


SUBSURFACE EXPLORATION AND TEST REPORT Campbell Highway SOURCE/TP#: 826-4703

J. Magun Site #6 Campbell Highway Gravel Search km 70-90, km 7 PROJECT NO: 552-202104-2035-0661-5

Hitachi 200 LC Coordinates: Z09 N6722702.6m E489056.1m ELEVATION: 826.3m

SAMPLE TYPE UNDISTURBED DCPT AUGER BULK SPT CORE

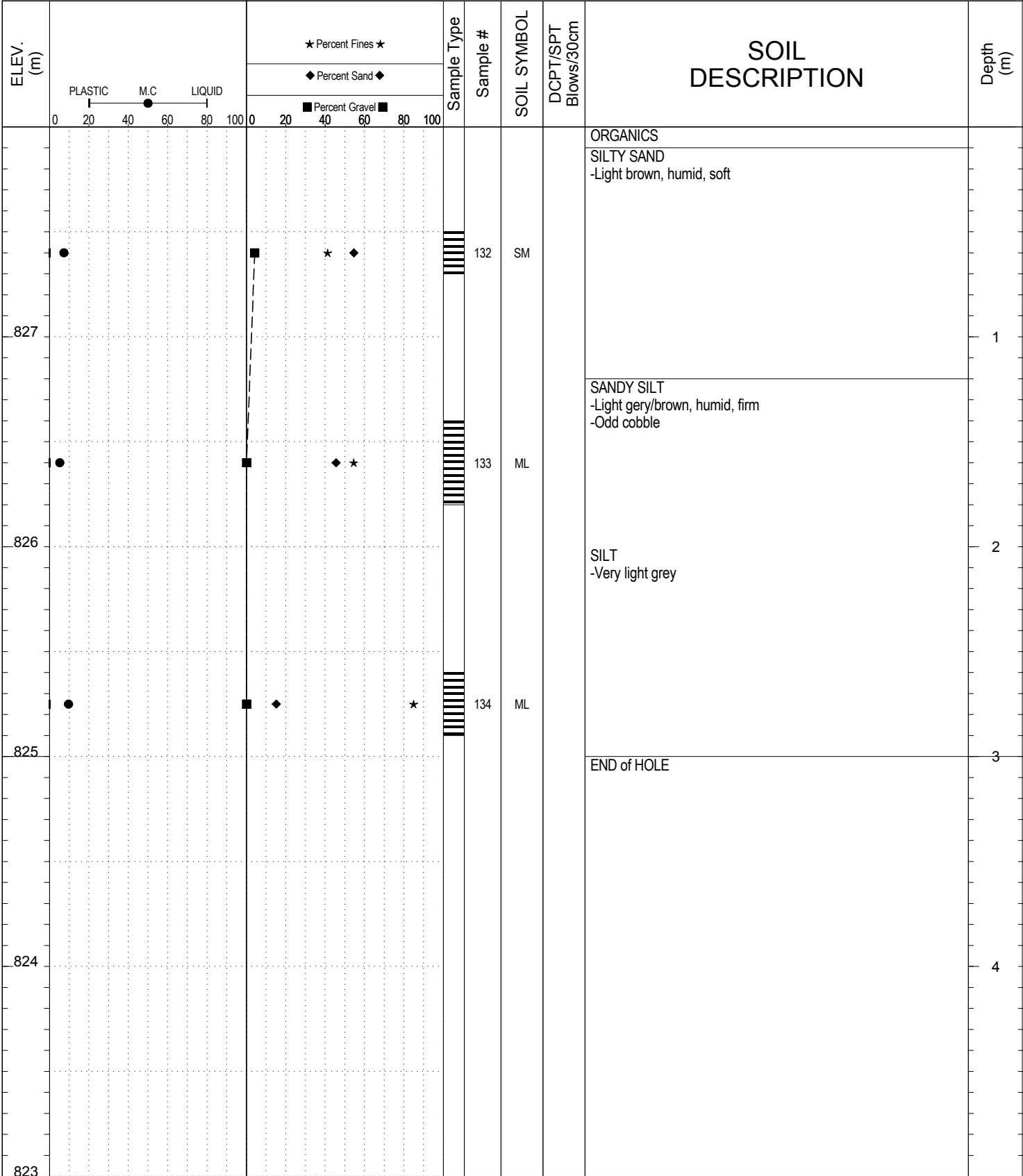


SUBSURFACE EXPLORATION AND TEST REPORT Campbell Highway SOURCE/TP#: 826-4704

J. Magun Site #6 Campbell Highway Gravel Search km 70-90, km 7 PROJECT NO: 552-202104-2035-0661-5

Hitachi 200 LC Coordinates: Z09 N6722710.9m E489145.3m ELEVATION: 828m

SAMPLE TYPE UNDISTURBED DCPT AUGER BULK SPT CORE

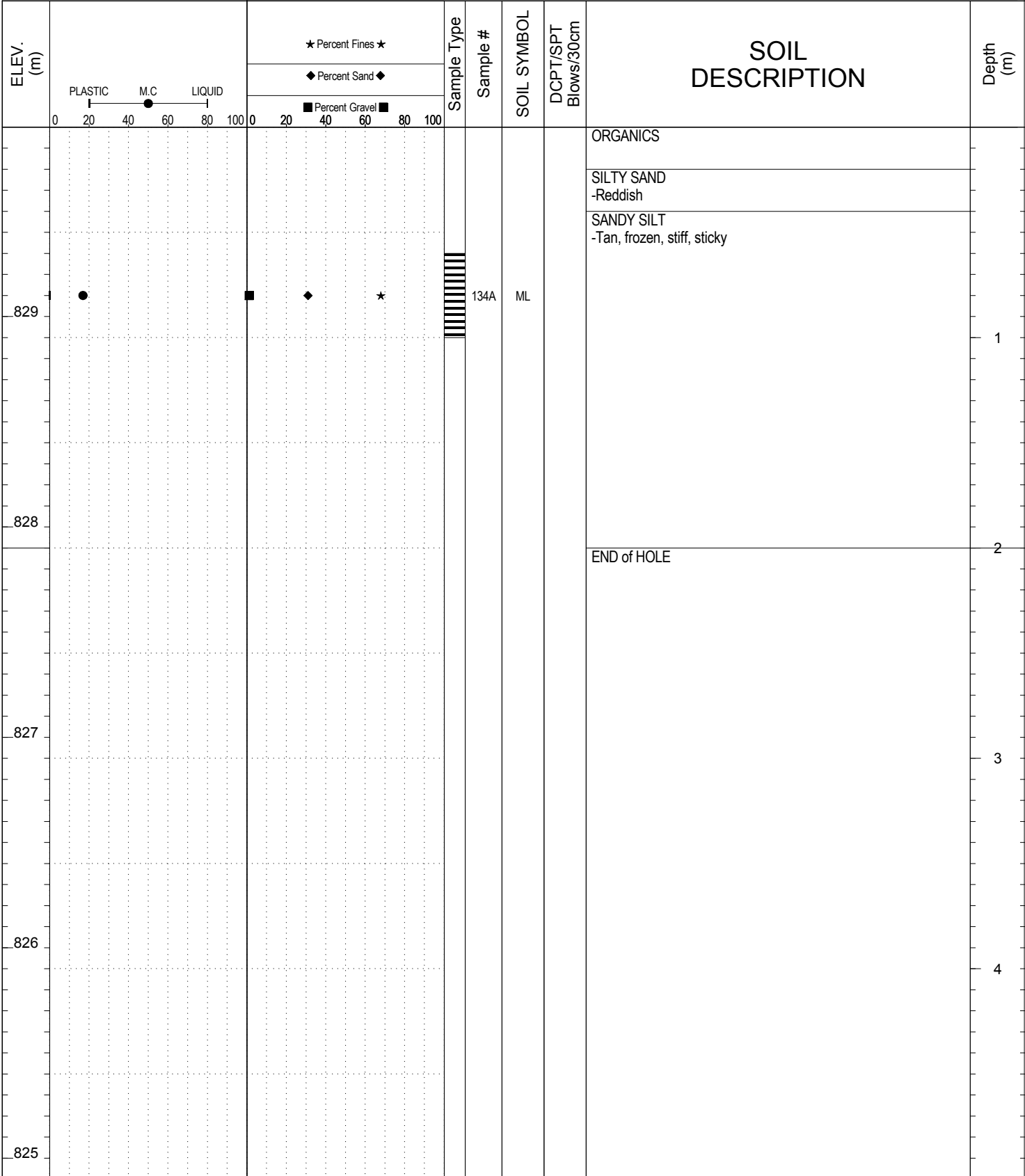


SUBSURFACE EXPLORATION AND TEST REPORT Campbell Highway SOURCE/TP#: 826-4705

J. Magun Site #6 Campbell Highway Gravel Search km 70-90, km 7 PROJECT NO: 552-202104-2035-0661-5

Hitachi 200 LC Coordinates: Z09 N6722814.2m E489156.1m ELEVATION: 829.9m

SAMPLE TYPE UNDISTURBED DCPT AUGER BULK SPT CORE

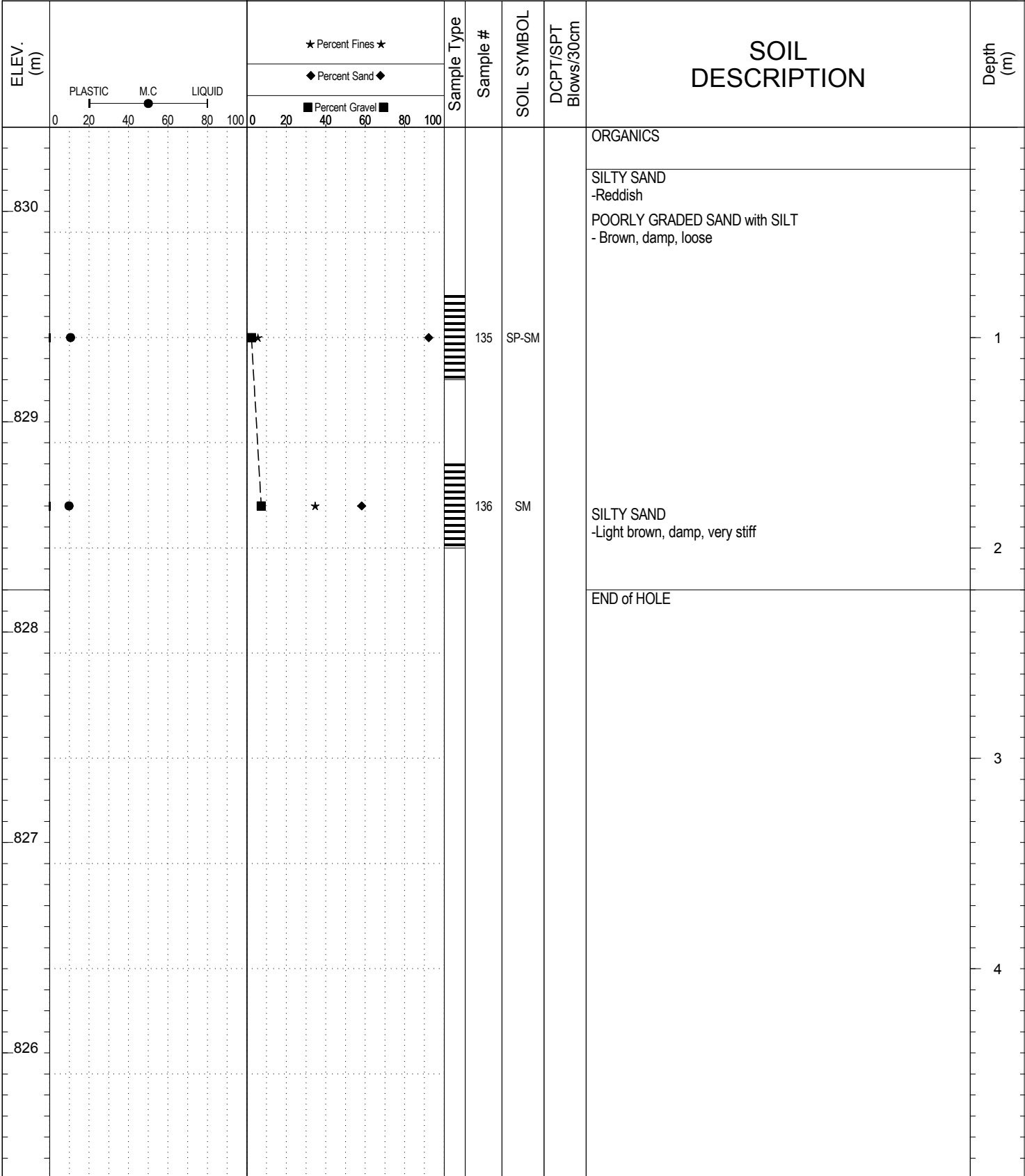


SUBSURFACE EXPLORATION AND TEST REPORT Campbell Highway SOURCE/TP#: 826-4706

J. Magun Site #6 Campbell Highway Gravel Search km 70-90, km 7 PROJECT NO: 552-202104-2035-0661-5

Hitachi 200 LC Coordinates: Z09 N6722691.1m E489416.5m ELEVATION: 830.4m

SAMPLE TYPE UNDISTURBED DCPT AUGER BULK SPT CORE

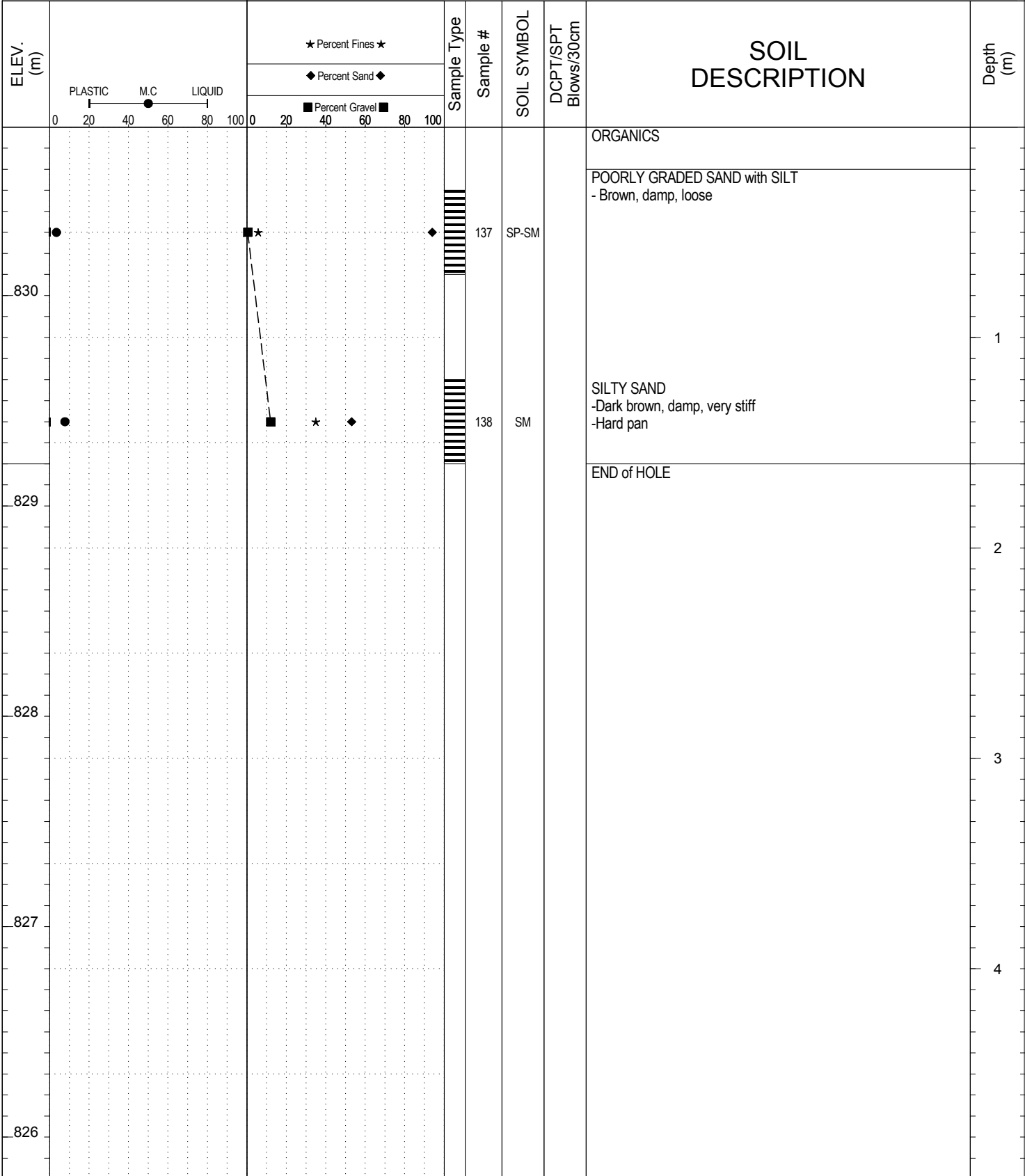


SUBSURFACE EXPLORATION AND TEST REPORT Campbell Highway SOURCE/TP#: 826-4707

J. Magun Site #6 Campbell Highway Gravel Search km 70-90, km 7 PROJECT NO: 552-202104-2035-0661-5

Hitachi 200 LC Coordinates: Z09 N6722700.3m E489506.4m ELEVATION: 830.8m

SAMPLE TYPE UNDISTURBED DCPT AUGER BULK SPT CORE

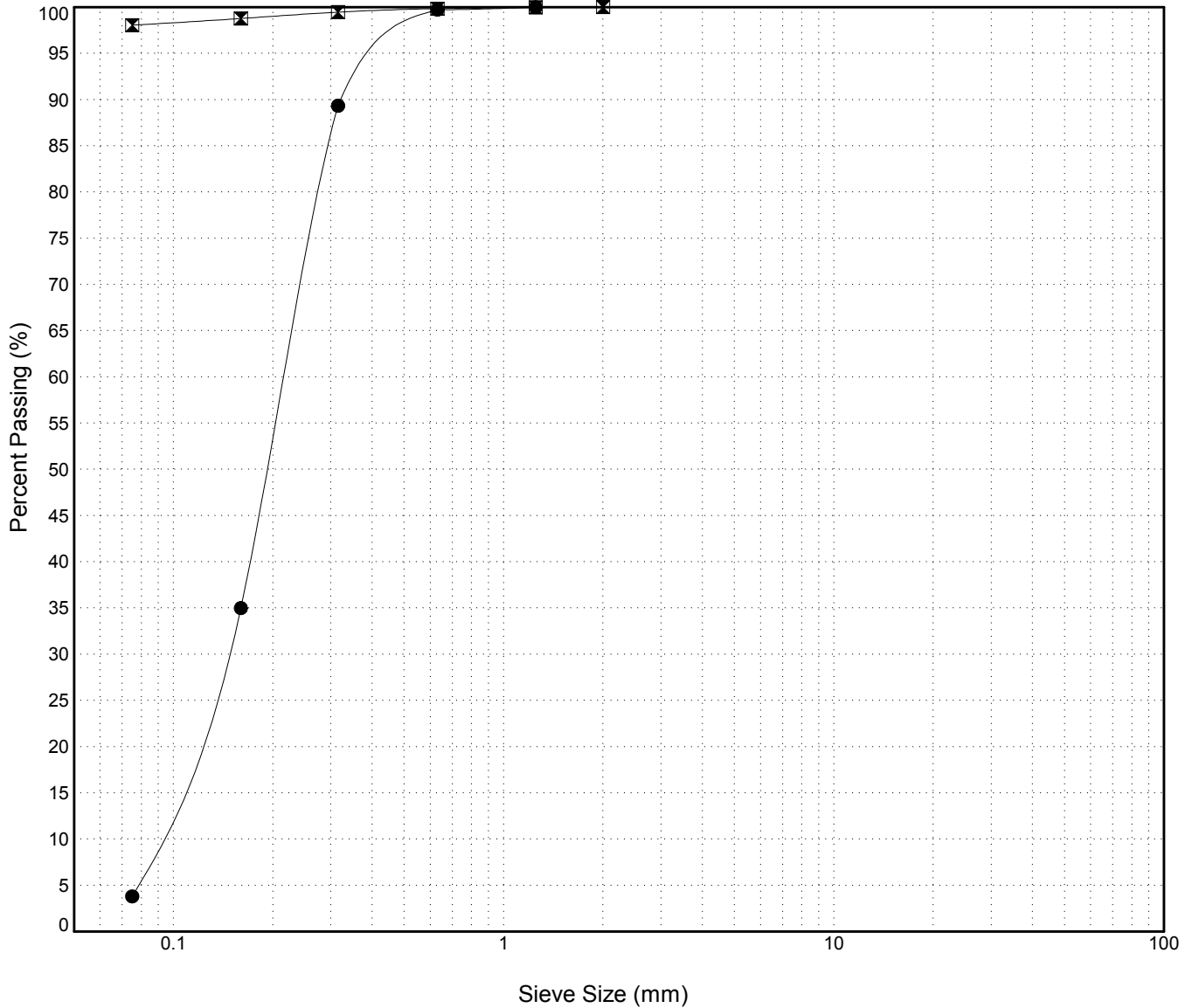


GRAIN SIZE ANALYSIS	Site #6 Campbell Highway Gravel Search km 70-90	SOURCE/TP#: 826-4697
J.Magun	km 77 LHS	PROJECT NO: 552-202104-2035-0661-5
Hitachi 200 LC	Coordinates:Z09 N6722649.7m E489260.5m	ELEVATION: 832.7m

Master Revised July 2013

Field #	Lab #	Depth	Classification	%H2O	LL	PL	PI	Cc	Cu											
● 112	1283	0.6 to 1.0	POORLY GRADED SAND(SP)	4.2	NP	NP	NP	1.1	2.5											
☒ 113	1284	3.5 to 4.0	SILT(ML)	37.4	NP	NP	NP													
Field #	Lab #	% PASSING													% Breakdown					
● 112	1283	100.0	80.0	50.0	25.0	20.0	12.5	10.0	5.0	2.5	1.25	0.630	0.315	0.160	0.080	Gravel	Sand	Silt	Clay	
☒ 113	1284	100.0	100.0	100.0	100.0	100.0	100.0	100.0	100.0	100.0	100.0	100.0	99.7	89.3	35.0	3.8	0.0	96.2	3.8	

Silt	Sand			Gravel	
	Fine	Medium	Coarse	Fine	Coarse



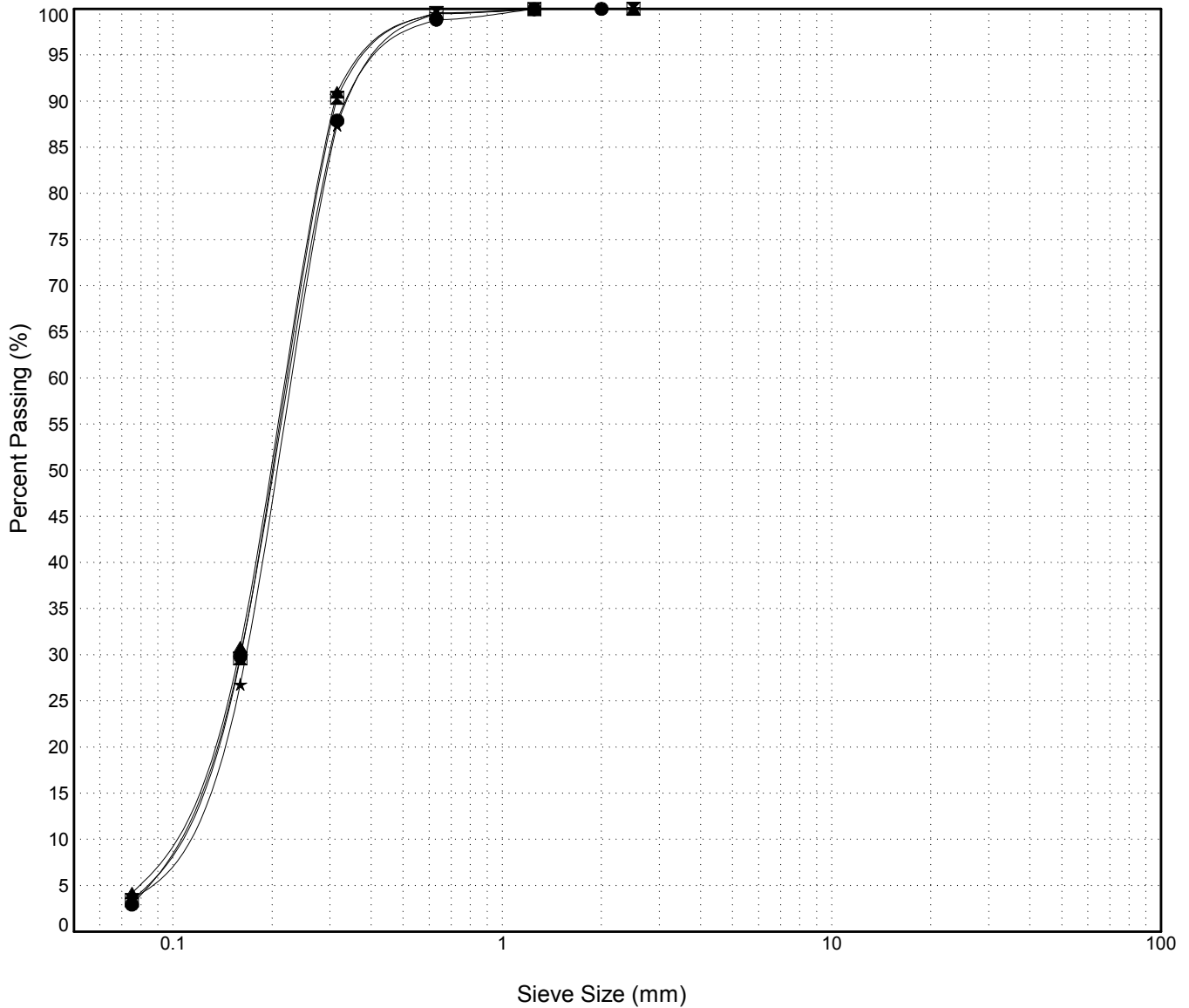
GRAIN SIZE ANALYSIS	Site #6 Campbell Highway Gravel Search km 70-90	SOURCE/TP#: 826-4698
J.Magun	km 77 LHS	PROJECT NO: 552-202104-2035-0661-5
Hitachi 200 LC	Coordinates:Z09 N6722801.4m E489244.1m	ELEVATION: 834.8m

Master Revised July 2013

Field #	Lab #	Depth	Classification	%H2O	LL	PL	PI	Cc	Cu
● 114	1285	0.8 to 1.3	POORLY GRADED SAND(SP)	5.4	NP	NP	NP	1.2	2.5
☒ 115	1286	2.2 to 2.6	POORLY GRADED SAND(SP)	5.6	NP	NP	NP	1.3	2.5
▲ 116	1287	3.2 to 3.6	POORLY GRADED SAND(SP)	5.6	NP	NP	NP	1.2	2.5
★ 117	1288	4.2 to 4.6	POORLY GRADED SAND(SP)	6.2	NP	NP	NP	1.3	2.5

Field #	Lab #	% PASSING														% Breakdown			
		100.0	80.0	50.0	25.0	20.0	12.5	10.0	5.0	2.5	1.25	0.630	0.315	0.160	0.080	Gravel	Sand	Silt	Clay
● 114	1285	100.0	100.0	100.0	100.0	100.0	100.0	100.0	100.0	100.0	100.0	100.0	98.8	87.9	29.8	2.9	0.0	97.1	2.9
☒ 115	1286	100.0	100.0	100.0	100.0	100.0	100.0	100.0	100.0	100.0	100.0	100.0	99.6	90.4	29.6	3.4	0.0	96.6	3.4
▲ 116	1287	100.0	100.0	100.0	100.0	100.0	100.0	100.0	100.0	100.0	100.0	100.0	99.9	99.5	30.8	4.2	0.0	95.8	4.2
★ 117	1288	100.0	100.0	100.0	100.0	100.0	100.0	100.0	100.0	100.0	100.0	100.0	99.5	87.4	26.8	3.5	0.0	96.5	3.5

Silt	Sand			Gravel	
	Fine	Medium	Coarse	Fine	Coarse



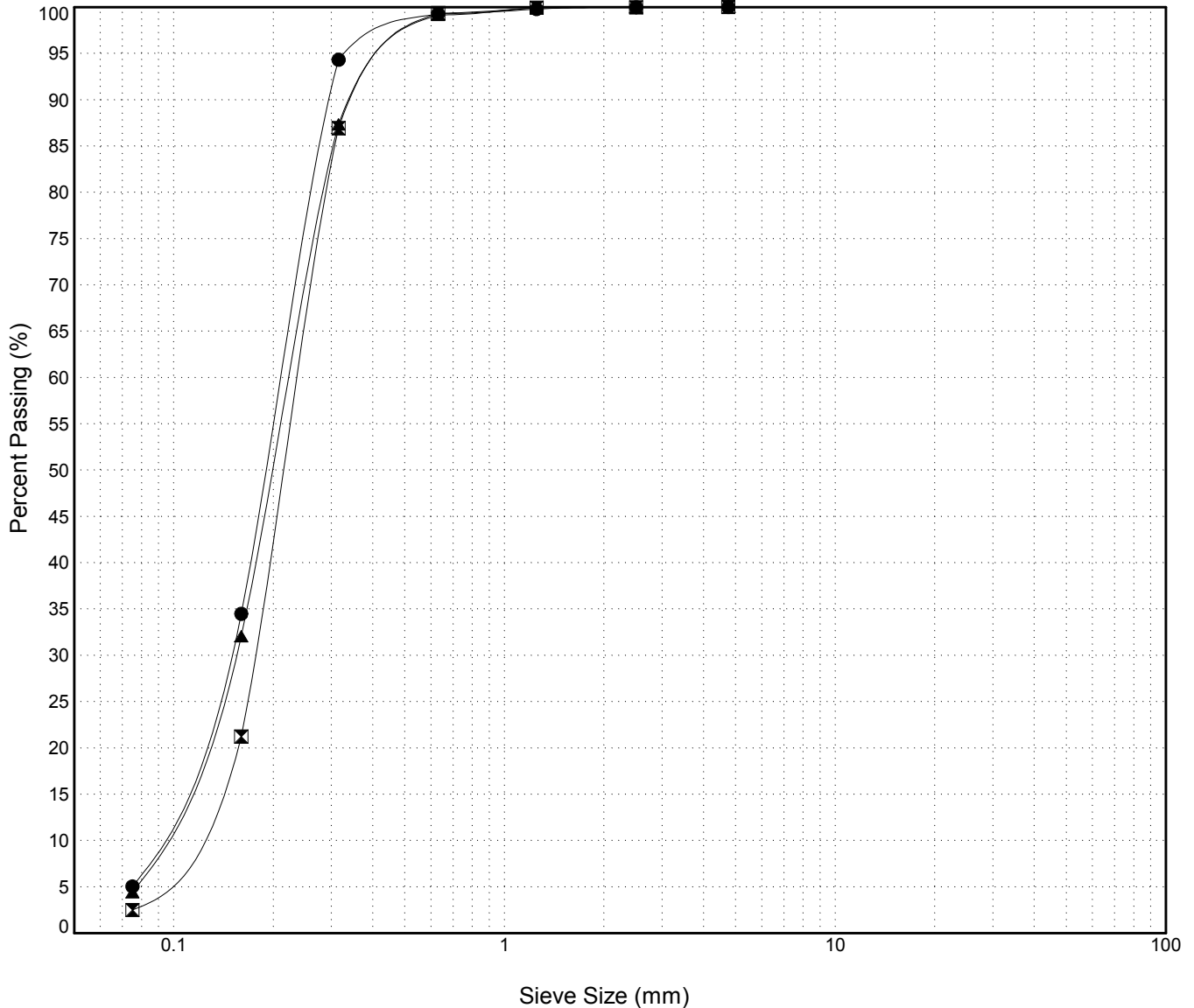
GRAIN SIZE ANALYSIS	Site #6 Campbell Highway Gravel Search km 70-90	SOURCE/TP#: 826-4699
J.Magun	km 77 LHS	PROJECT NO: 552-202104-2035-0661-5
Hitachi 200 LC	Coordinates:Z09 N6722881.7m E489260.9m	ELEVATION: 834.1m

Master Revised July 2013

Field #	Lab #	Depth	Classification	%H2O	LL	PL	PI	Cc	Cu
● 118	1289	0.8 to 1.3	POORLY GRADED SAND with SILT(SP-SM)	6.6	NP	NP	NP	1.1	2.5
☒ 119	1290	2.0 to 2.5	POORLY GRADED SAND(SP)	4.8	NP	NP	NP	1.3	2.3
▲ 120	1291	4.0 to 4.5	POORLY GRADED SAND(SP)	4.8	NP	NP	NP	1.2	2.6

Field #	Lab #	% PASSING														% Breakdown				
		100.0	80.0	50.0	25.0	20.0	12.5	10.0	5.0	2.5	1.25	0.630	0.315	0.160	0.080	Gravel	Sand	Silt	Clay	
● 118	1289	100.0	100.0	100.0	100.0	100.0	100.0	100.0	100.0	100.0	99.8	99.3	94.3	34.5	5.0	0.0	95.0	5.0		
☒ 119	1290	100.0	100.0	100.0	100.0	100.0	100.0	100.0	100.0	100.0	99.9	99.4	86.9	21.2	2.5	0.0	97.5	2.5		
▲ 120	1291	100.0	100.0	100.0	100.0	100.0	100.0	100.0	100.0	100.0	99.2	87.3	32.1	4.4	0.0	95.6	4.4			

Silt	Sand			Gravel	
	Fine	Medium	Coarse	Fine	Coarse



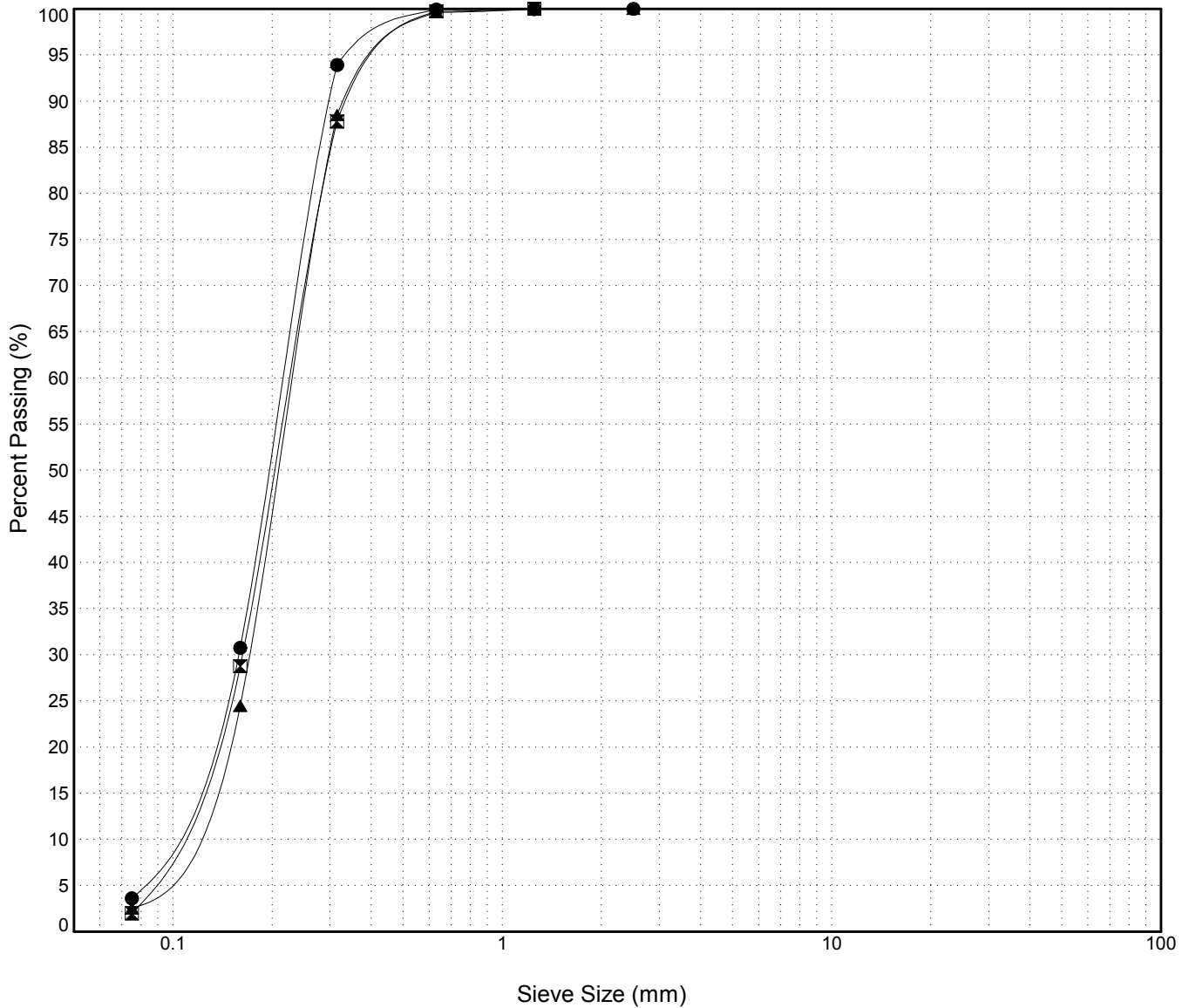
GRAIN SIZE ANALYSIS	Site #6 Campbell Highway Gravel Search km 70-90	SOURCE/TP#: 826-4700
J.Magun	km 77 LHS	PROJECT NO: 552-202104-2035-0661-5
Hitachi 200 LC	Coordinates:Z09 N6722899.1m E489180.1m	ELEVATION: 836.1m

Master Revised July 2013

Field #	Lab #	Depth	Classification	%H2O	LL	PL	PI	Cc	Cu
● 121	1292	0.8 to 1.1	POORLY GRADED SAND(SP)	5.0	NP	NP	NP	1.3	2.4
☒ 122	1293	2.0 to 2.5	POORLY GRADED SAND(SP)	3.1	NP	NP	NP	1.2	2.4
▲ 123	1294	4.0 to 4.5	POORLY GRADED SAND(SP)	4.3	NP	NP	NP	1.3	2.4

Field #	Lab #	100.0	80.0	50.0	25.0	20.0	12.5	10.0	5.0	2.5	1.25	0.630	0.315	0.160	0.080	% Breakdown			
		% PASSING														Gravel	Sand	Silt	Clay
● 121	1292	100.0	100.0	100.0	100.0	100.0	100.0	100.0	100.0	100.0	100.0	100.0	99.9	93.9	30.8	3.6	0.0	96.4	3.6
☒ 122	1293	100.0	100.0	100.0	100.0	100.0	100.0	100.0	100.0	100.0	100.0	100.0	99.7	87.8	28.8	2.0	0.0	98.0	2.0
▲ 123	1294	100.0	100.0	100.0	100.0	100.0	100.0	100.0	100.0	100.0	100.0	100.0	99.6	88.5	24.5	2.5	0.0	97.5	2.5

Silt	Sand			Gravel	
	Fine	Medium	Coarse	Fine	Coarse



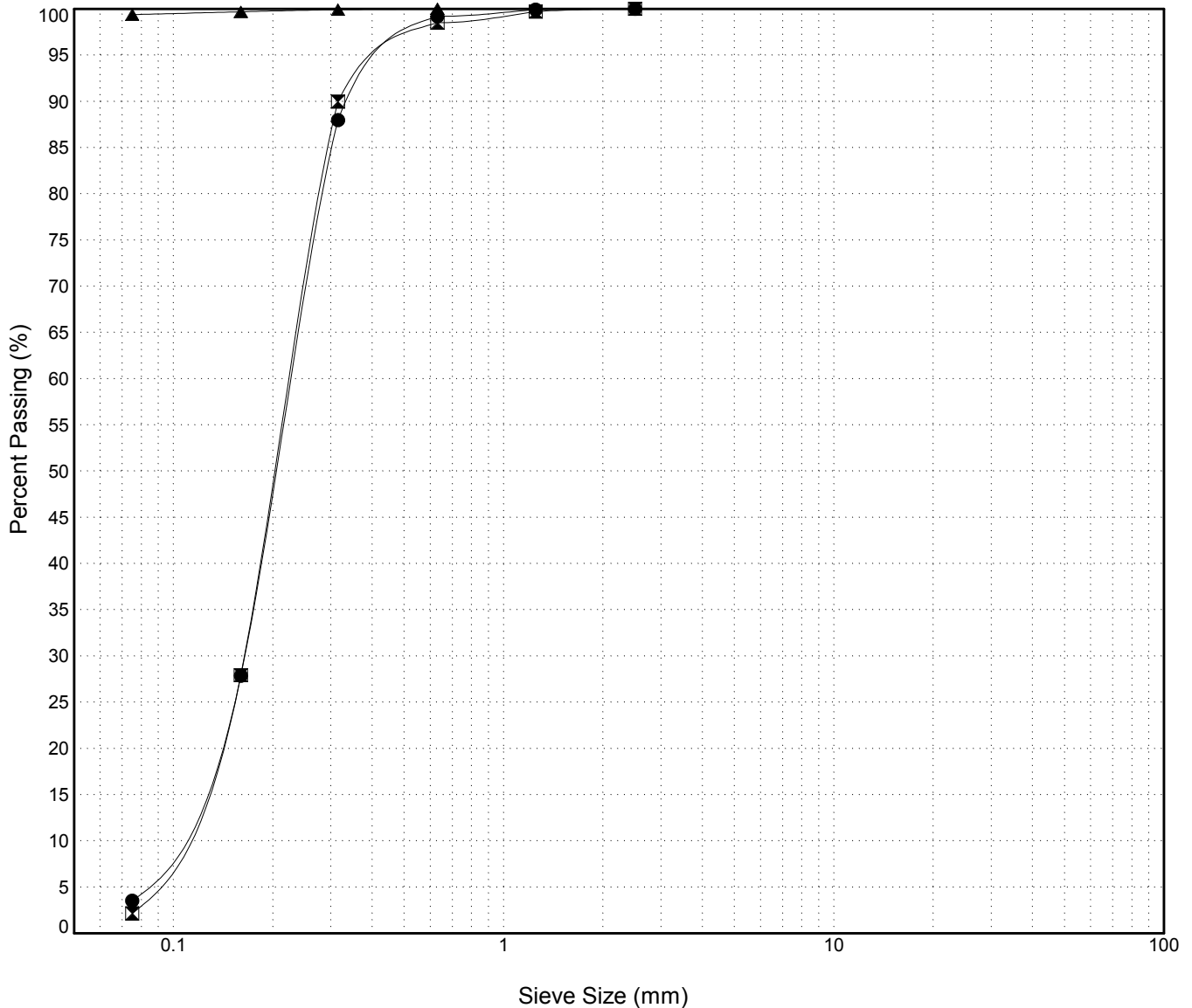
GRAIN SIZE ANALYSIS	Site #6 Campbell Highway Gravel Search km 70-90	SOURCE/TP#: 826-4702
J.Magun	km 77 LHS	PROJECT NO: 552-202104-2035-0661-5
Hitachi 200 LC	Coordinates:Z09 N6722811.4m E489050.9m	ELEVATION: 829.2m

Master Revised July 2013

Field #	Lab #	Depth	Classification	%H2O	LL	PL	PI	Cc	Cu
● 127	1298	0.8 to 1.3	POORLY GRADED SAND(SP)	5.9	NP	NP	NP	1.3	2.5
☒ 128	1299	2.3 to 2.7	POORLY GRADED SAND(SP)	4.4	NP	NP	NP	1.2	2.4
▲ 129	1300	3.6 to 4.1	SILT(ML)	33.0	NP	NP	NP		

Field #	Lab #	% PASSING														% Breakdown			
		100.0	80.0	50.0	25.0	20.0	12.5	10.0	5.0	2.5	1.25	0.630	0.315	0.160	0.080	Gravel	Sand	Silt	Clay
● 127	1298	100.0	100.0	100.0	100.0	100.0	100.0	100.0	100.0	100.0	99.9	99.2	88.0	27.9	3.5	0.0	96.5	3.5	
☒ 128	1299	100.0	100.0	100.0	100.0	100.0	100.0	100.0	100.0	100.0	99.7	98.5	90.0	27.9	2.1	0.0	97.9	2.1	
▲ 129	1300	100.0	100.0	100.0	100.0	100.0	100.0	100.0	100.0	100.0	100.0	100.0	99.9	99.7	99.4	0.0	0.6	99.4	

Silt	Sand			Gravel	
	Fine	Medium	Coarse	Fine	Coarse

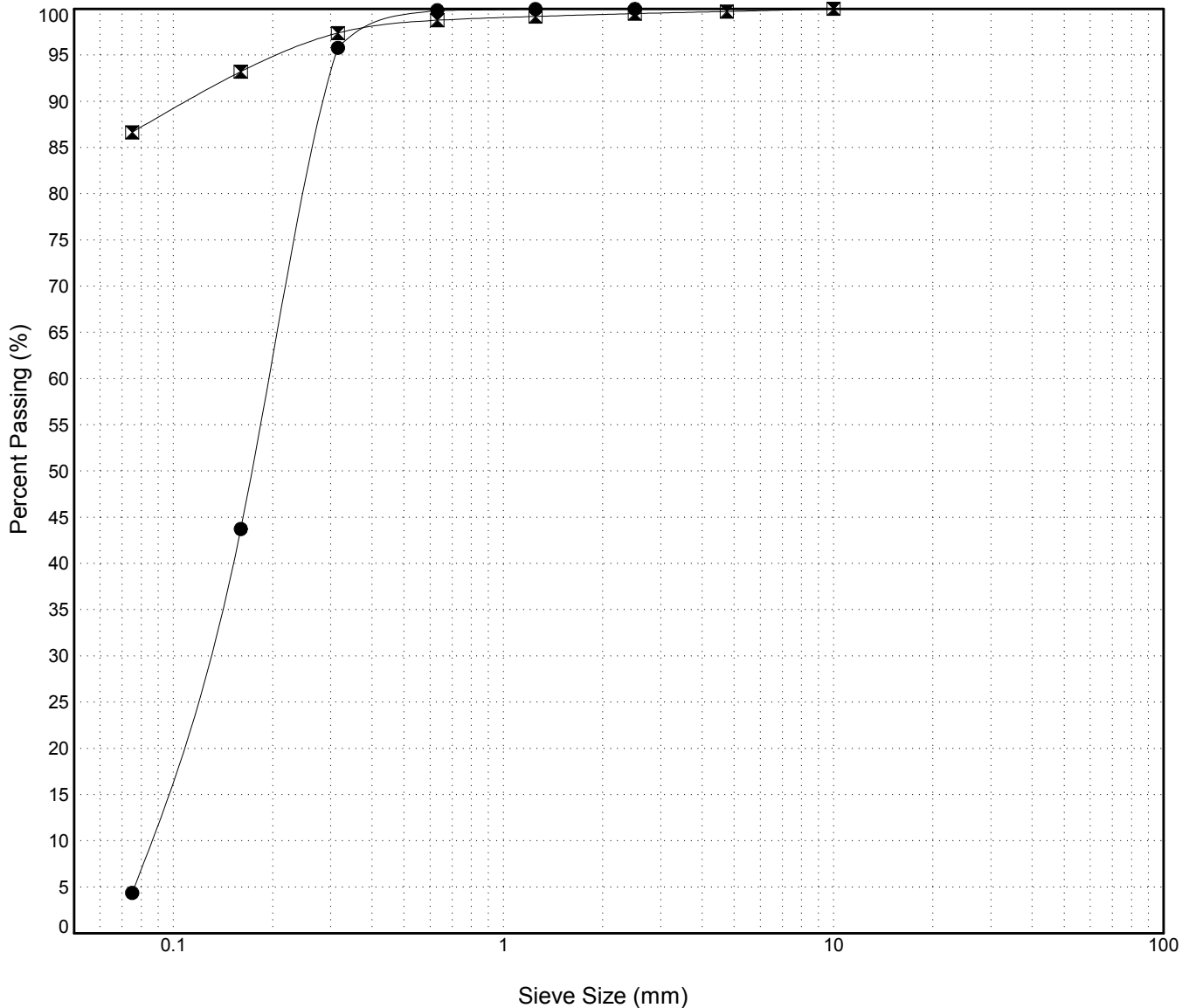


GRAIN SIZE ANALYSIS	Site #6 Campbell Highway Gravel Search km 70-90	SOURCE/TP#: 826-4703
J.Magun	km 77 LHS	PROJECT NO: 552-202104-2035-0661-5
Hitachi 200 LC	Coordinates:Z09 N6722702.6m E489056.1m	ELEVATION: 826.3m

Master Revised July 2013

Field #	Lab #	Depth	Classification	%H2O	LL	PL	PI	Cc	Cu										
● 130	1301	1.0 to 1.5	POORLY GRADED SAND(SP)	4.9	NP	NP	NP	0.9	2.4										
☒ 131	1302	2.2 to 2.7	SILT(ML)	26.8	NP	NP	NP												
Field #	Lab #	% PASSING													% Breakdown				
		100.0	80.0	50.0	25.0	20.0	12.5	10.0	5.0	2.5	1.25	0.630	0.315	0.160	0.080	Gravel	Sand	Silt	Clay
● 130	1301	100.0	100.0	100.0	100.0	100.0	100.0	100.0	100.0	100.0	100.0	99.9	95.8	43.7	4.4	0.0	95.6	4.4	
☒ 131	1302	100.0	100.0	100.0	100.0	100.0	100.0	100.0	99.7	99.5	99.2	98.8	97.4	93.2	86.6	0.3	13.1	86.6	

Silt	Sand			Gravel	
	Fine	Medium	Coarse	Fine	Coarse

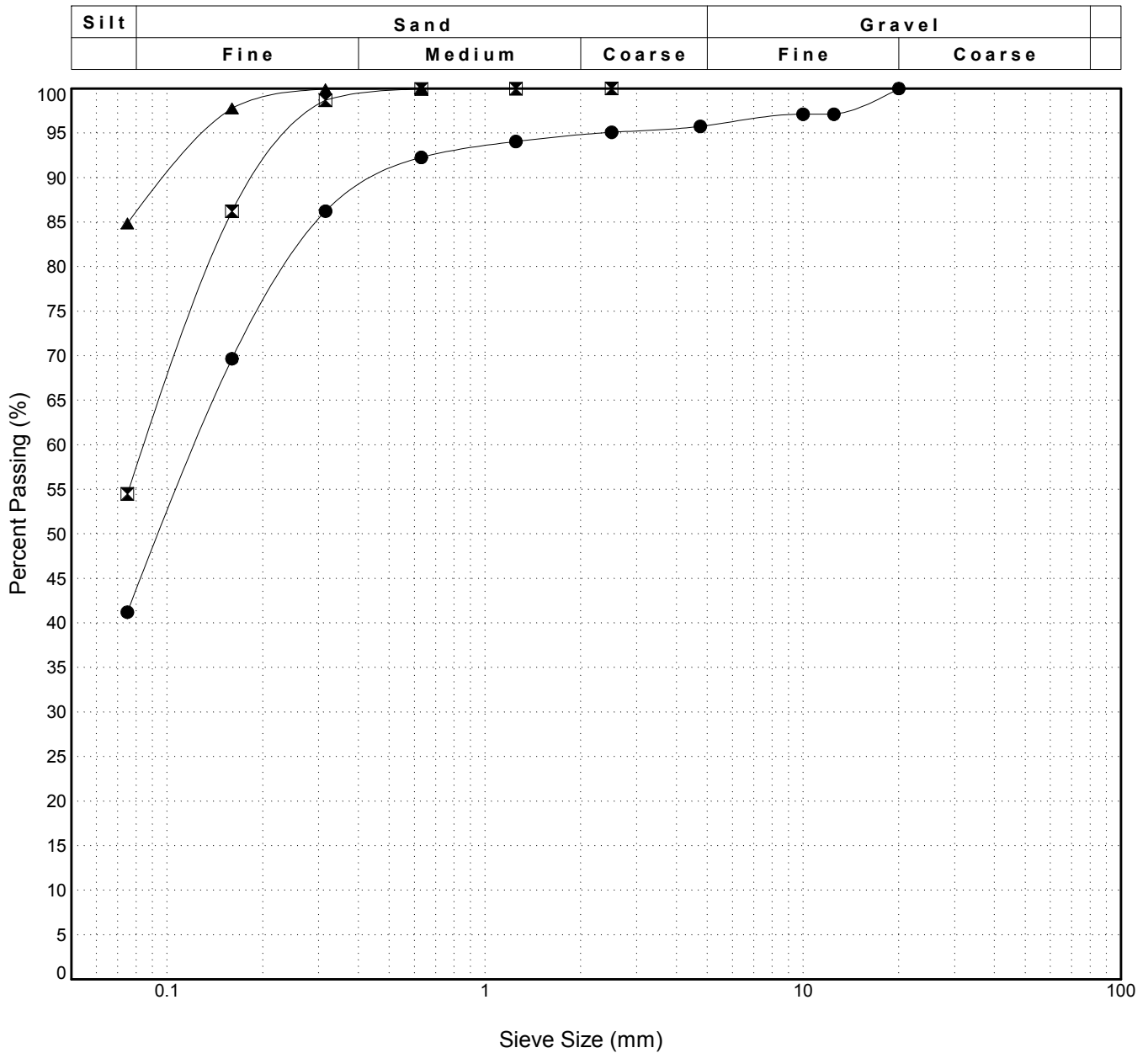


GRAIN SIZE ANALYSIS	Site #6 Campbell Highway Gravel Search km 70-90	SOURCE/TP#: 826-4704
J.Magun	km 77 LHS	PROJECT NO: 552-202104-2035-0661-5
Hitachi 200 LC	Coordinates:Z09 N6722710.9m E489145.3m	ELEVATION: 828m

Master Revised July 2013

Field #	Lab #	Depth	Classification	%H2O	LL	PL	PI	Cc	Cu
● 132	1303	0.5 to 0.7	SILTY SAND(SM)	7.3	NP	NP	NP		
☒ 133	1304	1.4 to 1.8	SANDY SILT(ML)	5.2	NP	NP	NP		
▲ 134	1305	2.6 to 2.9	SILT with SAND(ML)	9.6	NP	NP	NP		

Field #	Lab #	% PASSING														% Breakdown			
		100.0	80.0	50.0	25.0	20.0	12.5	10.0	5.0	2.5	1.25	0.630	0.315	0.160	0.080	Gravel	Sand	Silt	Clay
● 132	1303	100.0	100.0	100.0	100.0	100.0	97.1	97.1	95.8	95.1	94.1	92.3	86.2	69.7	41.2	4.2	54.5	41.2	
☒ 133	1304	100.0	100.0	100.0	100.0	100.0	100.0	100.0	100.0	100.0	100.0	100.0	98.7	86.2	54.5	0.0	45.5	54.5	
▲ 134	1305	100.0	100.0	100.0	100.0	100.0	100.0	100.0	100.0	100.0	100.0	100.0	99.9	97.8	84.9	0.0	15.1	84.9	

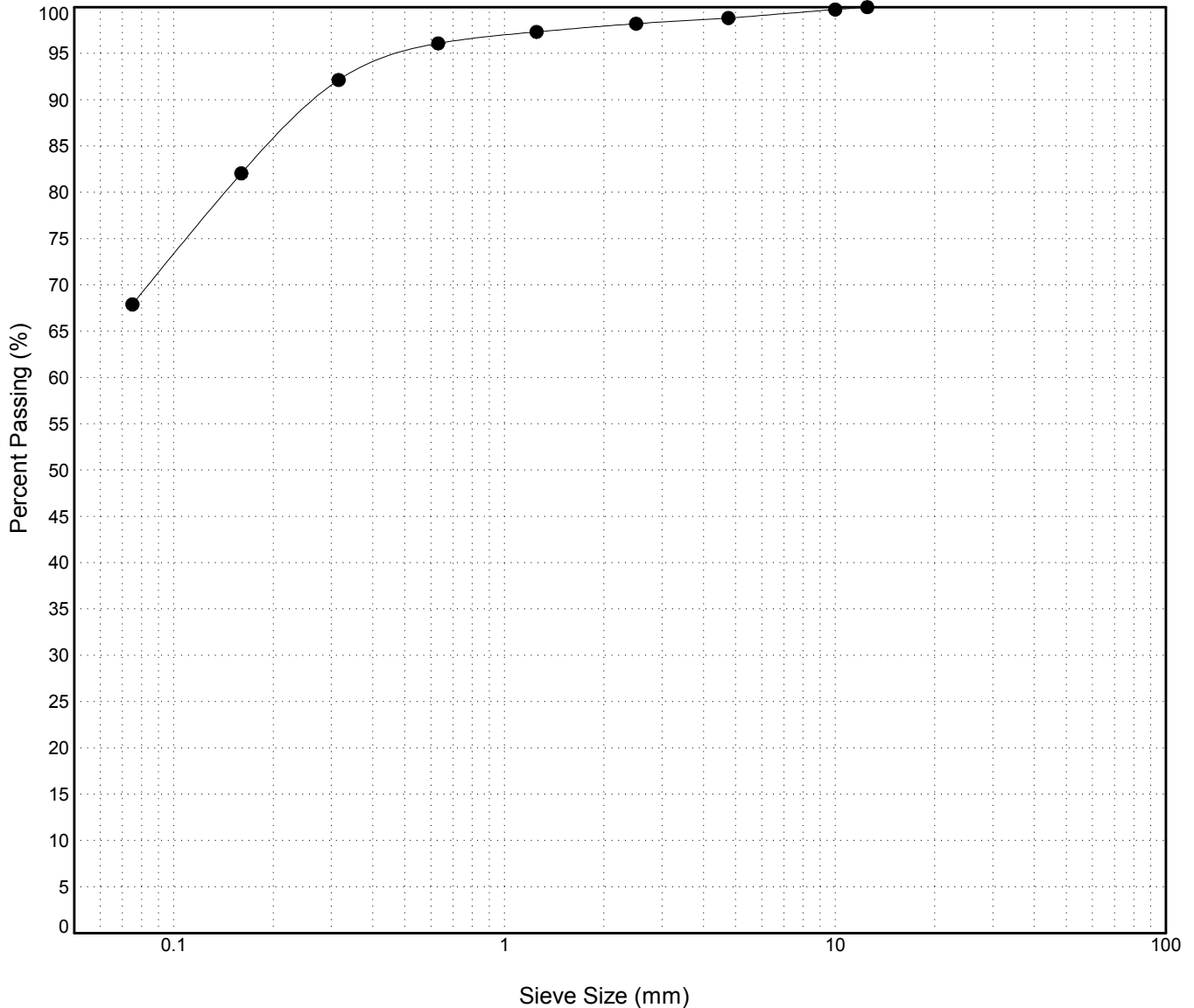


GRAIN SIZE ANALYSIS	Site #6 Campbell Highway Gravel Search km 70-90	SOURCE/TP#: 826-4705
J.Magun	km 77 LHS	PROJECT NO: 552-202104-2035-0661-5
Hitachi 200 LC	Coordinates:Z09 N6722814.2m E489156.1m	ELEVATION: 829.9m

Master Revised July 2013

Field #	Lab #	Depth	Classification											%H2O	LL	PL	PI	Cc	Cu
● 134A	1306	0.6 to 1.0	SANDY SILT (ML)											16.8	NP	NP	NP		
Field #	Lab #	100.0	80.0	50.0	25.0	20.0	12.5	10.0	5.0	2.5	1.25	0.630	0.315	0.160	0.080	% Breakdown			
● 134A	1306	100.0	100.0	100.0	100.0	100.0	100.0	99.7	98.8	98.2	97.3	96.1	92.1	82.1	67.9	Gravel	Sand	Silt	Clay
																1.2	30.9	67.9	

Silt	Sand			Gravel	
	Fine	Medium	Coarse	Fine	Coarse

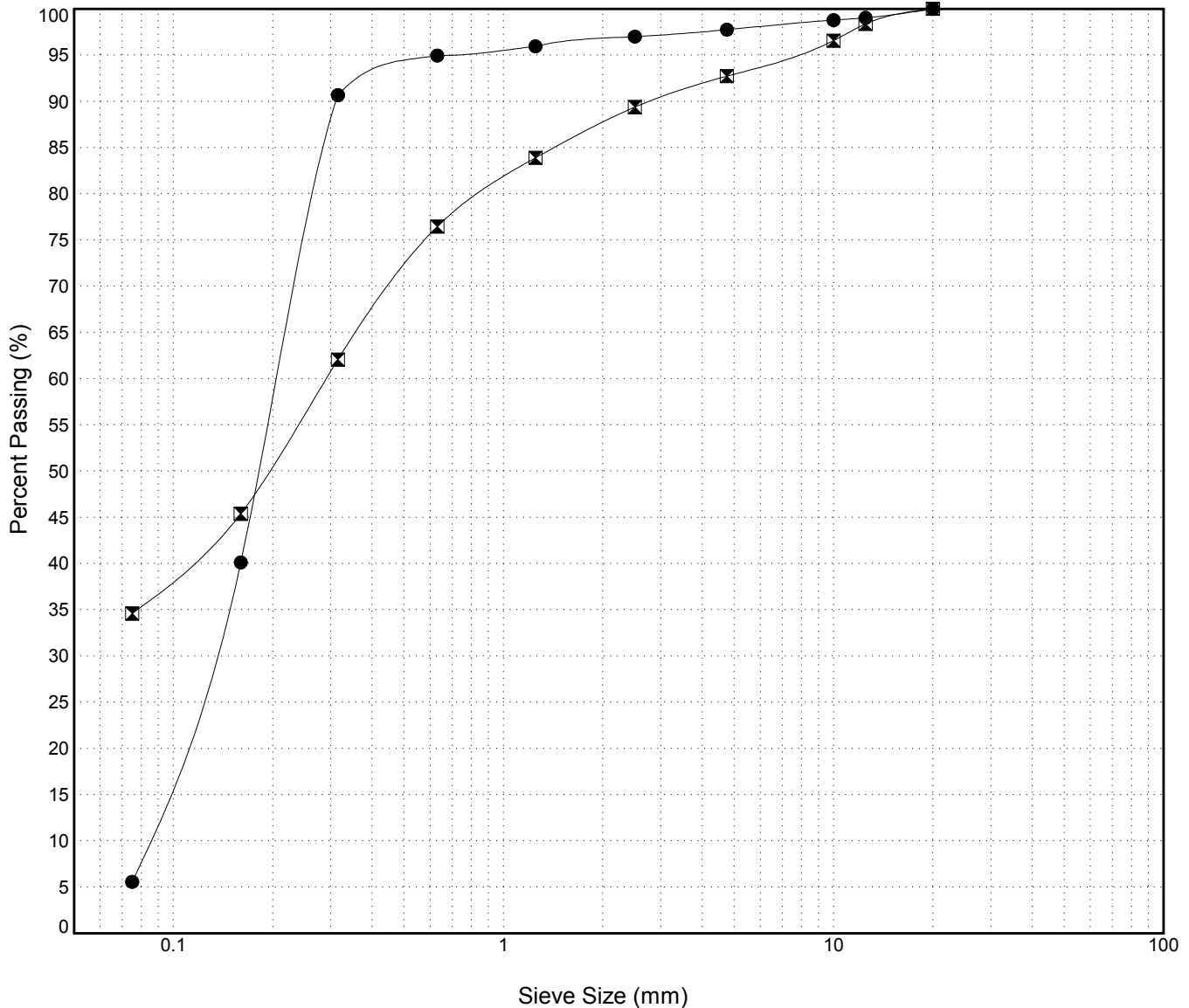


GRAIN SIZE ANALYSIS	Site #6 Campbell Highway Gravel Search km 70-90	SOURCE/TP#: 826-4706
J.Magun	km 77 LHS	PROJECT NO: 552-202104-2035-0661-5
Hitachi 200 LC	Coordinates:Z09 N6722691.1m E489416.5m	ELEVATION: 830.4m

Master Revised July 2013

Field #	Lab #	Depth	Classification	%H2O	LL	PL	PI	Cc	Cu											
● 135	1307	0.8 to 1.2	POORLY GRADED SAND with SILT(SP-SM)	10.6	NP	NP	NP	1.0	2.5											
☒ 136	1308	1.6 to 2.0	SILTY SAND(SM)	9.8	NP	NP	NP													
Field #	Lab #	100.0	80.0	50.0	25.0	20.0	12.5	10.0	5.0	2.5	1.25	0.630	0.315	0.160	0.080	% Breakdown				
● 135	1307	100.0	100.0	100.0	100.0	100.0	99.0	98.8	97.8	97.0	96.0	95.0	90.7	40.1	5.6	Gravel	Sand	Silt	Clay	
☒ 136	1308	100.0	100.0	100.0	100.0	100.0	98.4	96.6	92.7	89.4	83.9	76.4	62.1	45.4	34.6	7.3	58.1	34.6		

Silt	Sand			Gravel	
	Fine	Medium	Coarse	Fine	Coarse



GRAIN SIZE ANALYSIS	Site #6 Campbell Highway Gravel Search km 70-90	SOURCE/TP#: 826-4707
J.Magun	km 77 LHS	PROJECT NO: 552-202104-2035-0661-5
Hitachi 200 LC	Coordinates:Z09 N6722700.3m E489506.4m	ELEVATION: 830.8m

Master Revised July 2013

Field #	Lab #	Depth	Classification	%H2O	LL	PL	PI	Cc	Cu										
● 137	1309	0.3 to 0.7	POORLY GRADED SAND with SILT(SP-SM)	3.4	NP	NP	NP	1.3	2.7										
☒ 138	1310	1.2 to 1.6	SILTY SAND(SM)	7.7	NP	NP	NP												
Field #	Lab #	% PASSING														% Breakdown			
		100.0	80.0	50.0	25.0	20.0	12.5	10.0	5.0	2.5	1.25	0.630	0.315	0.160	0.080	Gravel	Sand	Silt	Clay
● 137	1309	100.0	100.0	100.0	100.0	100.0	100.0	100.0	99.6	99.1	98.4	97.4	85.8	30.6	5.7	0.4	93.9	5.7	
☒ 138	1310	100.0	100.0	100.0	94.0	94.0	90.6	90.3	88.0	85.8	82.2	77.1	65.3	47.5	34.9	12.0	53.1	34.9	

Silt	Sand			Gravel	
	Fine	Medium	Coarse	Fine	Coarse

