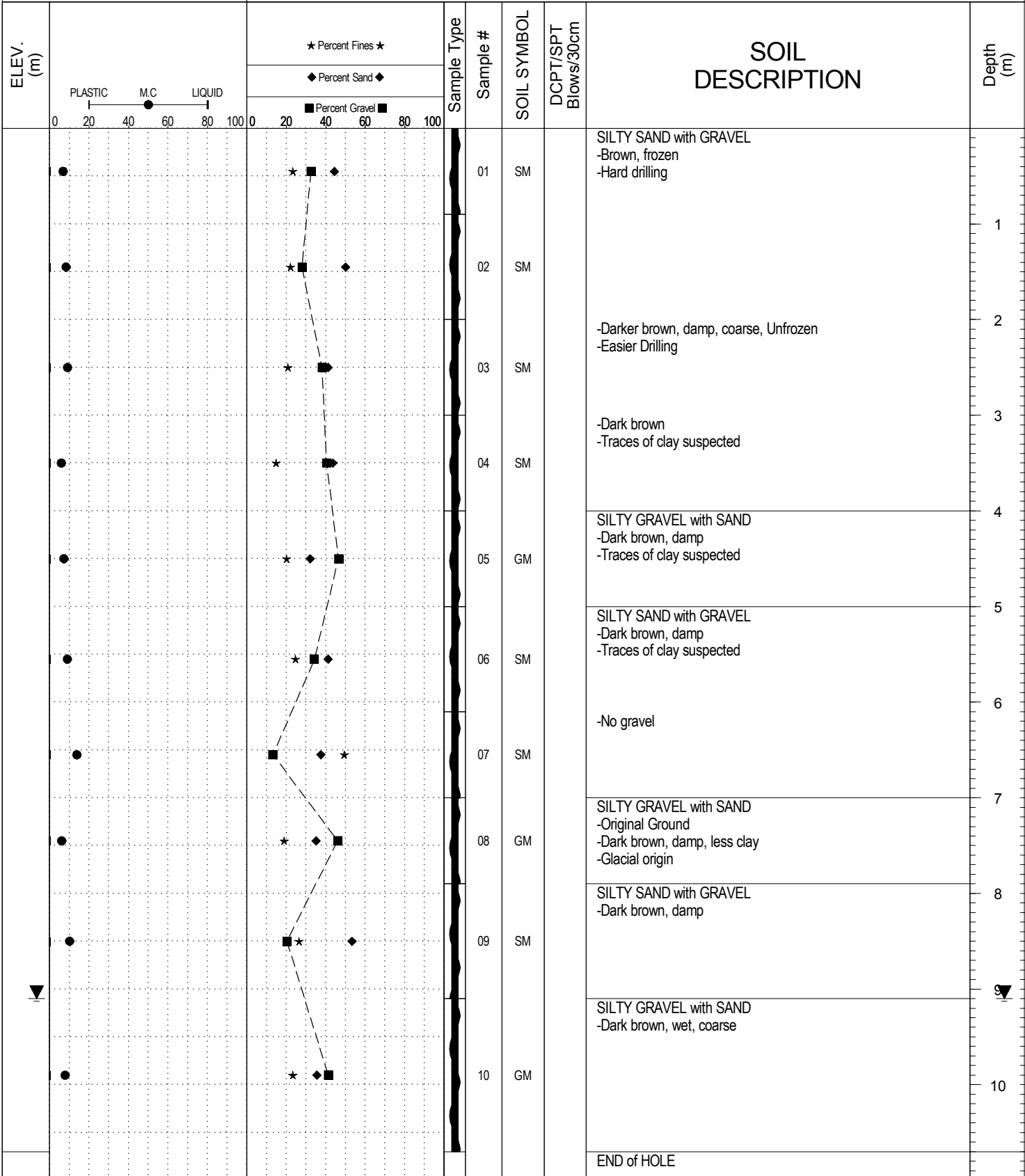


SUBSURFACE EXPLORATION AND TEST REPORT Klondike Hwy SOURCE/TP#: 854-5123

Donjek Drilling Errision Investigation, 254.5 LHS, PROJECT NO: 552 202102 1208 1-1

CME-75 6" Auger Coordinates: Z08V N6795907.8m E471163.4m ELEVATION: m

SAMPLE TYPE RETURN DCPT AUGER BULK SPT CORE

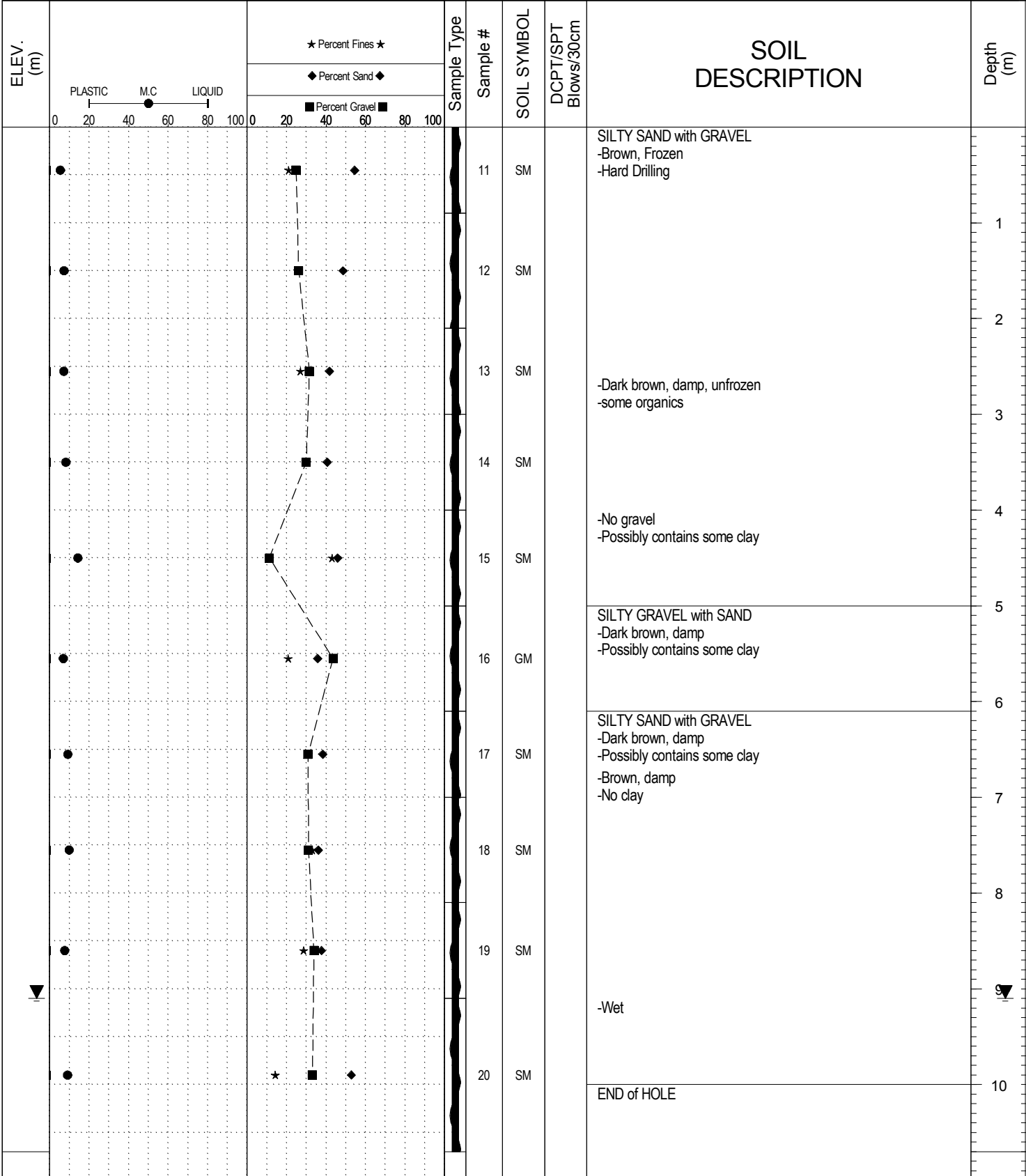


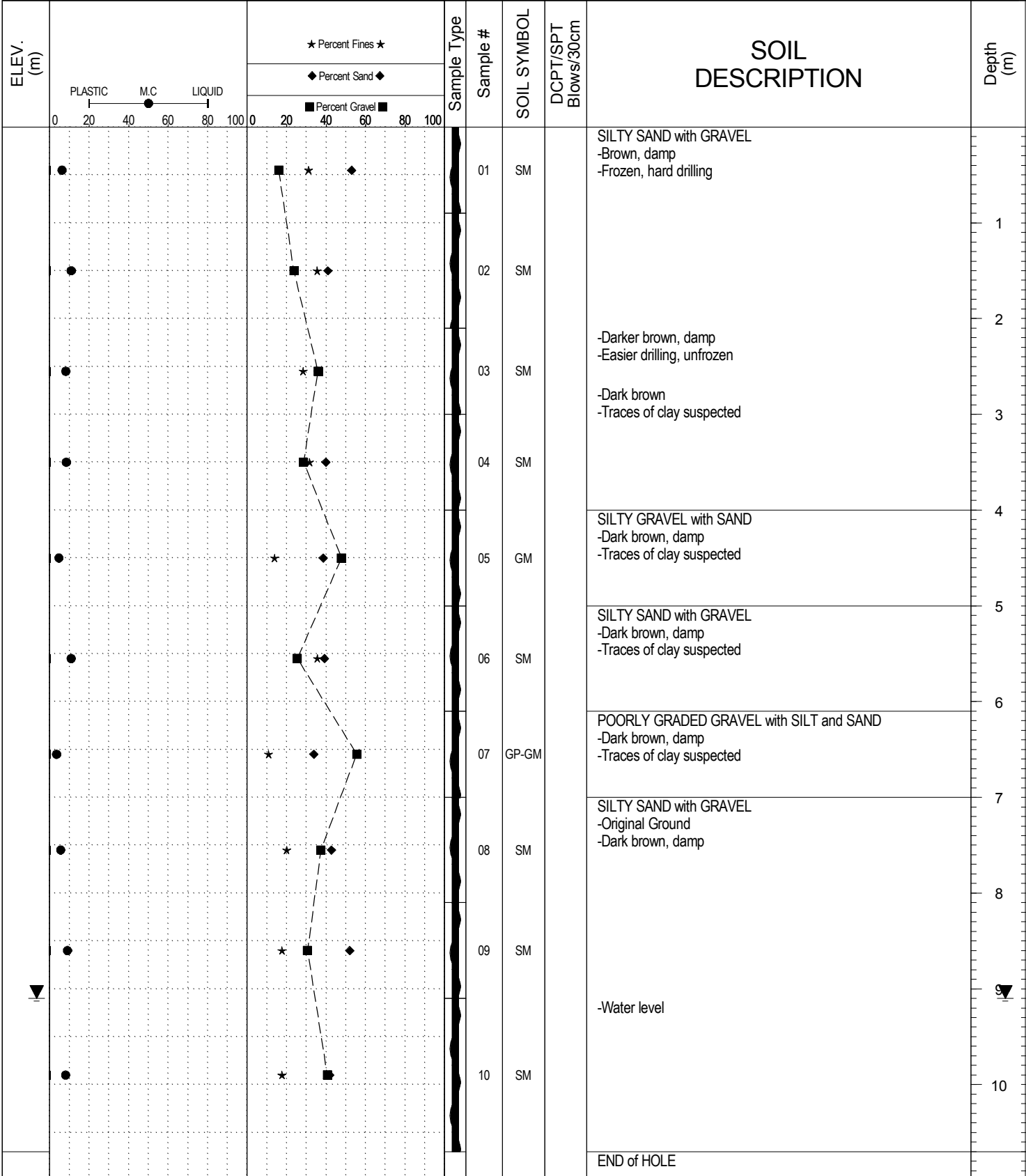
SUBSURFACE EXPLORATION AND TEST REPORT Klondike Hwy SOURCE/TP#: 854-5124

Donjek Drilling Errision Investigation, 254.5 LHS, PROJECT NO: 552 202102 1208 1-1

CME-75 6" Auger Coordinates: Z08V N6795880.9m E471189.4m ELEVATION: m

SAMPLE TYPE RETURN DCPT AUGER BULK SPT CORE





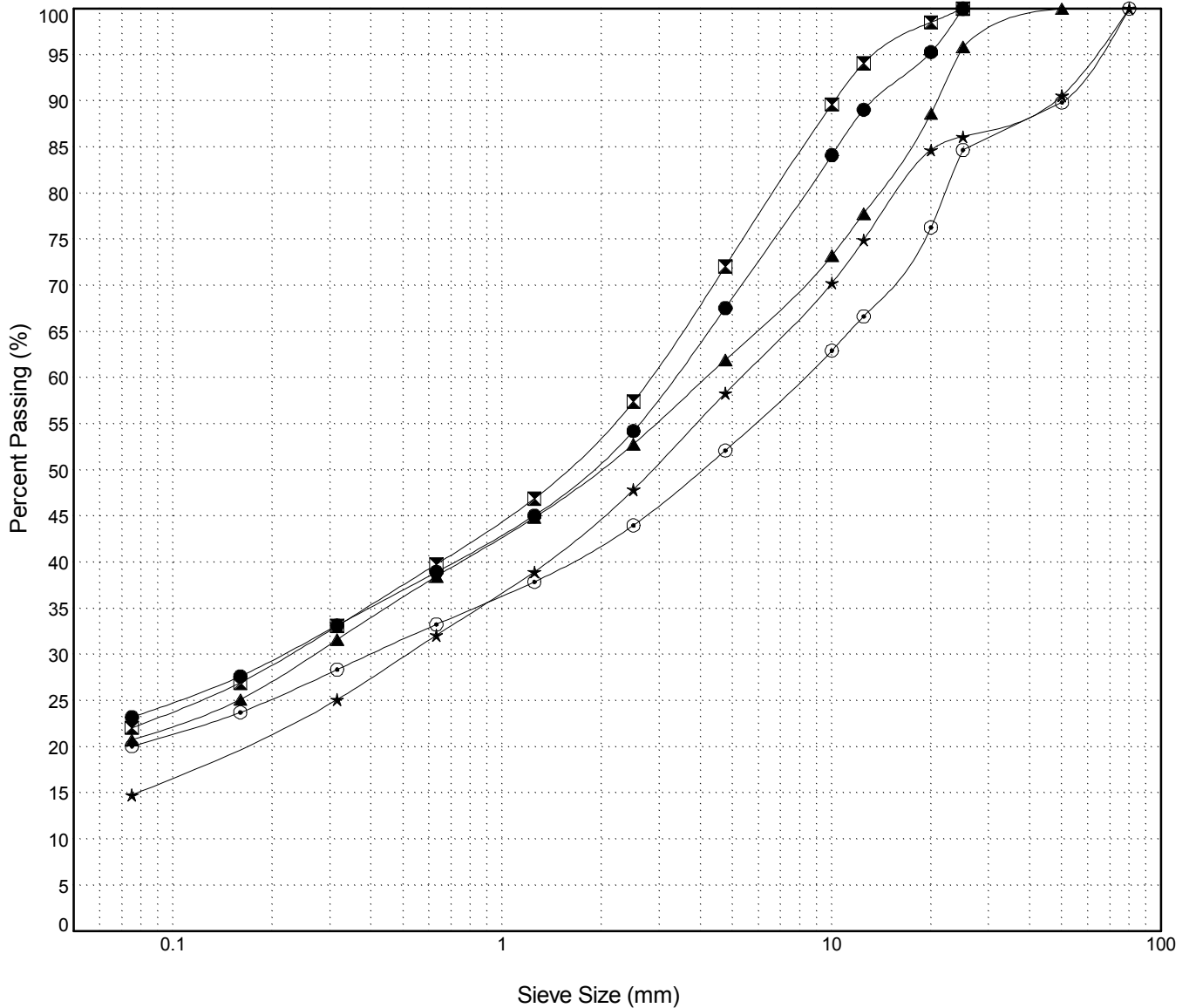
GRAIN SIZE ANALYSIS	Errosion Investigation	SOURCE/TP#: 854-5123
Donjek Drilling	254.5 LHS	PROJECT NO: 552 202102 1208 1-1
CME-75 6" Auger	Coordinates:Z08V N6795907.8m E471163.4m	ELEVATION: m

Master Revised July 2013

Field #	Lab #	Depth	Classification	%H2O	LL	PL	PI	Cc	Cu
● 01	975	0.0 to 0.9	SILTY SAND with GRAVEL(SM)	6.8	NP	NP	NP		
☒ 02	976	0.9 to 2.0	SILTY SAND with GRAVEL(SM)	8.3	NP	NP	NP		
▲ 03	977	2.0 to 3.0	SILTY SAND with GRAVEL(SM)	9.0	NP	NP	NP		
★ 04	978	3.0 to 4.0	SILTY SAND with GRAVEL(SM)	5.9	NP	NP	NP		
⊙ 05	979	4.0 to 5.0	SILTY GRAVEL with SAND(GM)	7.2	NP	NP	NP		

Field #	Lab #	%PASSING														%Breakdown			
		100.0	80.0	50.0	25.0	20.0	12.5	10.0	5.0	2.5	1.25	0.630	0.315	0.160	0.080	Gravel	Sand	Silt	Clay
● 01	975	100.0	100.0	100.0	100.0	95.3	89.0	84.1	67.6	54.2	45.1	38.9	33.2	27.6	23.2	32.4	44.3	23.2	
☒ 02	976	100.0	100.0	100.0	100.0	98.5	94.1	89.6	72.1	57.4	46.9	39.8	33.1	27.0	22.1	27.9	50.0	22.1	
▲ 03	977	100.0	100.0	100.0	95.8	88.6	77.8	73.2	61.9	52.8	44.8	38.5	31.6	25.1	20.7	38.1	41.2	20.7	
★ 04	978	100.0	98.7	90.6	86.1	84.7	74.9	70.3	58.3	47.9	39.0	32.1	25.1	20.2	14.8	40.4	43.5	14.8	
⊙ 05	979	100.0	98.6	89.8	84.7	76.3	66.6	62.9	52.1	44.0	37.9	33.3	28.4	23.7	20.1	46.5	32.0	20.1	

Silt	Sand			Gravel	
	Fine	Medium	Coarse	Fine	Coarse



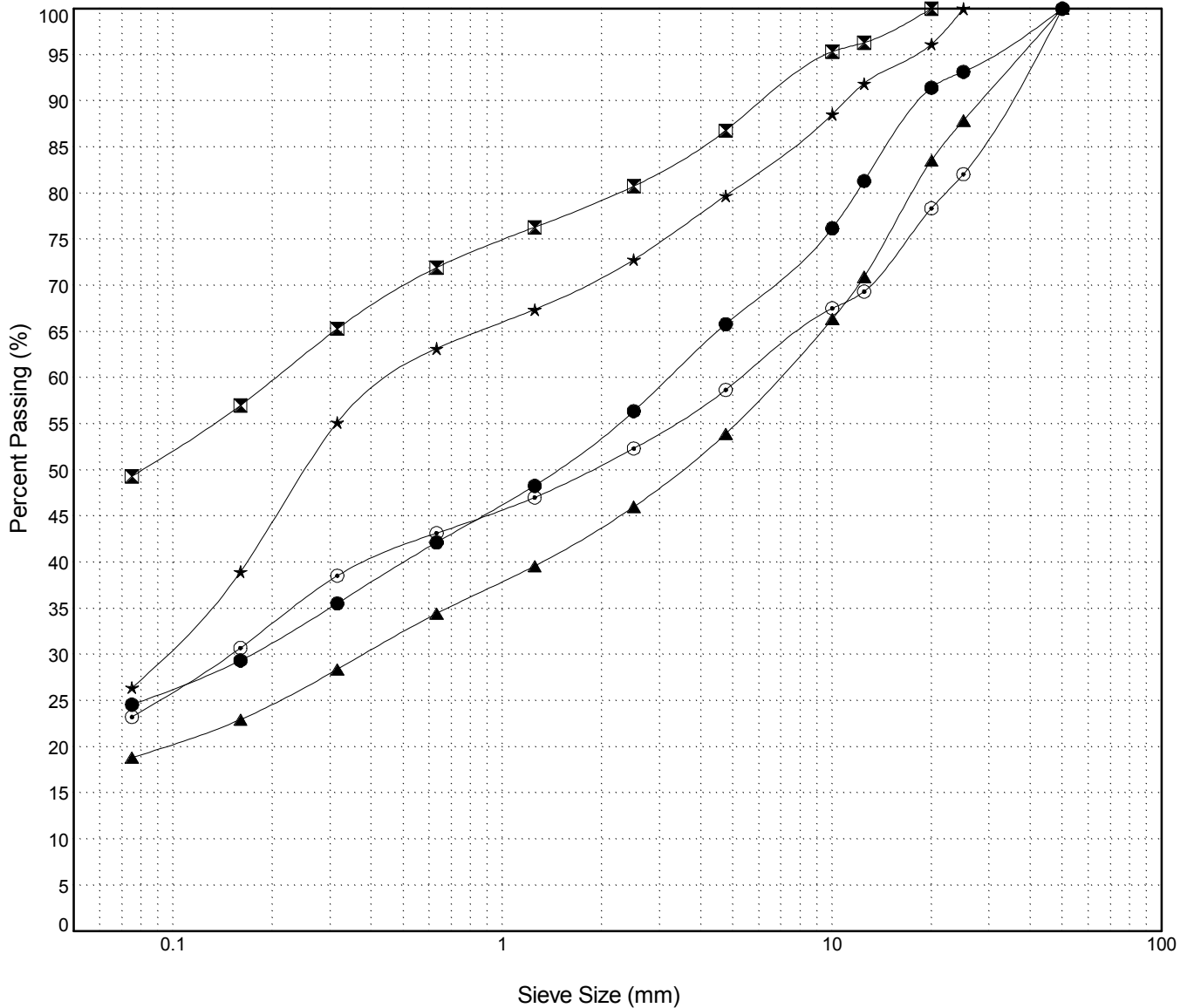
GRAIN SIZE ANALYSIS	Errosion Investigation	SOURCE/TP#: 854-5123
Donjek Drilling	254.5 LHS	PROJECT NO: 552 202102 1208 1-1
CME-75 6" Auger	Coordinates:Z08V N6795907.8m E471163.4m	ELEVATION: m

Master Revised July 2013

Field #	Lab #	Depth	Classification	%H2O	LL	PL	PI	Cc	Cu
● 06	980	5.0 to 6.1	SILTY SAND with GRAVEL(SM)	8.9	NP	NP	NP		
☒ 07	981	6.1 to 7.0	SILTY SAND(SM)	13.8	NP	NP	NP		
▲ 08	982	7.0 to 7.9	SILTY GRAVEL with SAND(GM)	6.1	NP	NP	NP		
★ 09	983	7.9 to 9.1	SILTY SAND with GRAVEL(SM)	10.1	NP	NP	NP		
⊙ 10	984	9.1 to 10.7	SILTY GRAVEL with SAND(GM)	7.8	NP	NP	NP		

Field #	Lab #	% PASSING	Sieve Size (mm)													% Breakdown				
			100.0	80.0	50.0	25.0	20.0	12.5	10.0	5.0	2.5	1.25	0.630	0.315	0.160	0.080	Gravel	Sand	Silt	Clay
● 06	980	100.0	100.0	100.0	100.0	93.1	91.4	81.3	76.2	65.8	56.4	48.3	42.1	35.5	29.4	24.6	34.2	41.2	24.6	
☒ 07	981	100.0	100.0	100.0	100.0	100.0	96.3	95.3	86.8	80.8	76.3	71.9	65.3	57.0	49.3	13.2	37.5	49.3		
▲ 08	982	100.0	100.0	100.0	87.9	83.6	70.9	66.4	53.9	46.0	39.6	34.4	28.4	22.9	18.8	46.1	35.1	18.8		
★ 09	983	100.0	100.0	100.0	100.0	96.2	91.9	88.6	79.7	72.8	67.4	63.2	55.2	39.0	26.4	20.3	53.3	26.4		
⊙ 10	984	100.0	100.0	100.0	82.1	78.4	69.3	67.5	58.7	52.3	47.0	43.2	38.5	30.7	23.2	41.3	35.4	23.2		

Silt	Sand			Gravel	
	Fine	Medium	Coarse	Fine	Coarse



Highways and Public Works
Transportation Engineering Branch

LOGGED BY: G. Kennedy
COMPILED BY: R. Stilwell
REVIEWED BY:

Pit #:
Complete: 2/13/2015 1:25:00 PM

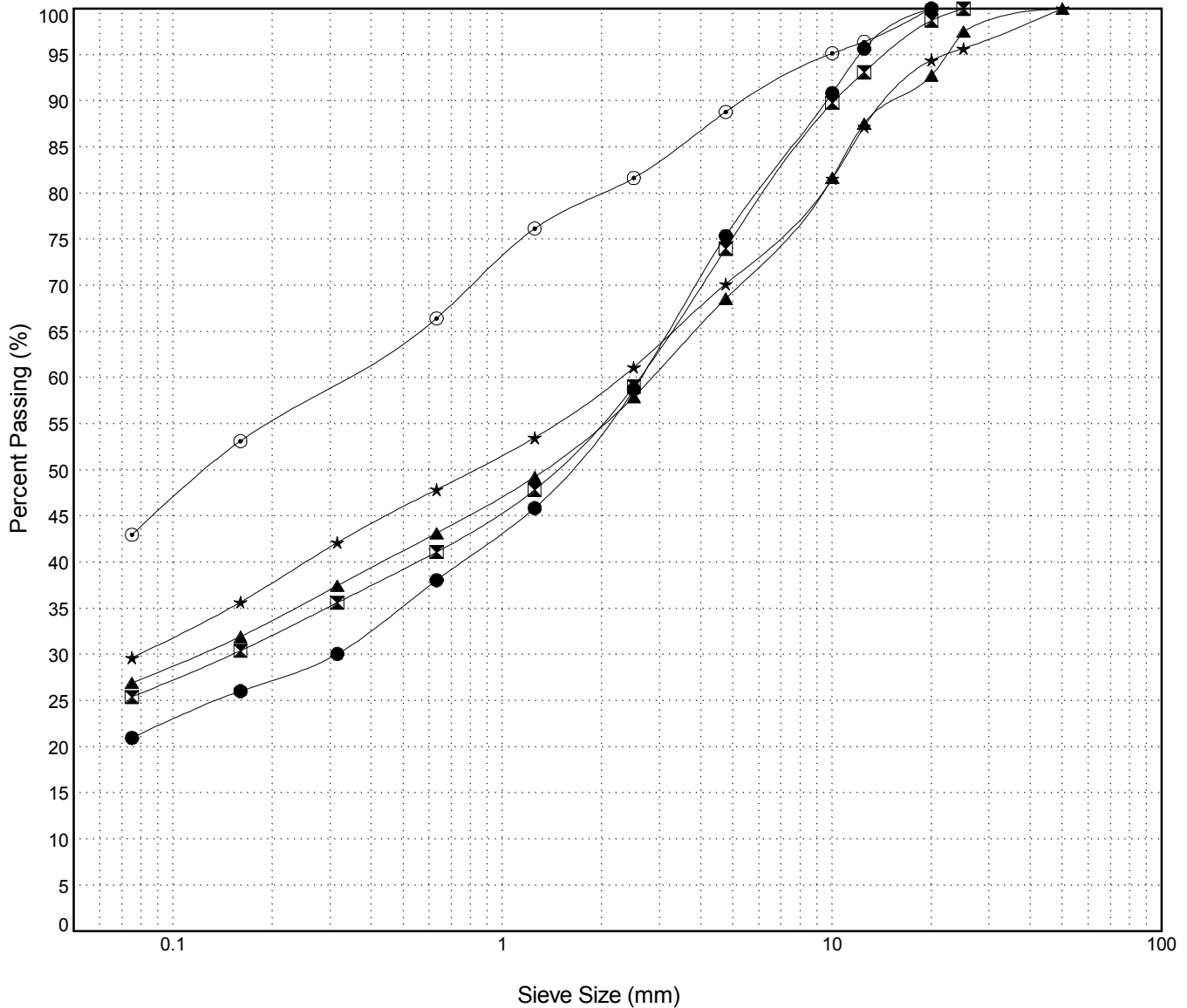
GRAIN SIZE ANALYSIS	Errosion Investigation	SOURCE/TP#: 854-5124
Donjek Drilling	254.5 LHS	PROJECT NO: 552 202102 1208 1-1
CME-75 6" Auger	Coordinates:Z08V N6795880.9m E471189.4m	ELEVATION: m

Master Revised July 2013

Field #	Lab #	Depth	Classification	%H2O	LL	PL	PI	Cc	Cu
● 11	985	0.0 to 0.9	SILTY SAND with GRAVEL(SM)	5.4	NP	NP	NP		
☒ 12	986	0.9 to 2.1	SILTY SAND with GRAVEL(SM)	7.2	NP	NP	NP		
▲ 13	987	2.1 to 3.0	SILTY SAND with GRAVEL(SM)	7.1	NP	NP	NP		
★ 14	988	3.0 to 4.0	SILTY SAND with GRAVEL(SM)	8.2	NP	NP	NP		
⊙ 15	989	4.0 to 5.0	SILTY SAND(SM)	14.2	NP	NP	NP		

Field #	Lab #	%PASSING													%Breakdown				
		100.0	80.0	50.0	25.0	20.0	12.5	10.0	5.0	2.5	1.25	0.630	0.315	0.160	0.080	Gravel	Sand	Silt	Clay
● 11	985	100.0	100.0	100.0	100.0	100.0	95.7	90.9	75.4	58.7	45.9	38.1	30.1	26.0	21.0	24.6	54.4	21.0	
☒ 12	986	100.0	100.0	100.0	100.0	98.7	93.1	89.8	74.0	59.1	47.8	41.1	35.6	30.4	25.4	26.0	48.6	25.4	
▲ 13	987	100.0	100.0	100.0	97.5	92.8	87.5	81.7	68.6	57.9	49.2	43.1	37.5	31.9	26.9	31.4	41.6	26.9	
★ 14	988	100.0	100.0	100.0	95.7	94.4	87.2	81.6	70.1	61.1	53.5	47.9	42.1	35.7	29.7	29.9	40.5	29.7	
⊙ 15	989	100.0	100.0	100.0	100.0	100.0	96.4	95.2	88.8	81.6	76.2	66.4	59.7	53.1	43.0	11.2	45.8	43.0	

Silt	Sand			Gravel	
	Fine	Medium	Coarse	Fine	Coarse



Highways and Public Works
Transportation Engineering Branch

LOGGED BY: G. Kennedy
COMPILED BY: R. Stilwell
REVIEWED BY:

Pit #:
Complete: 2/13/2015 3:10:00 PM

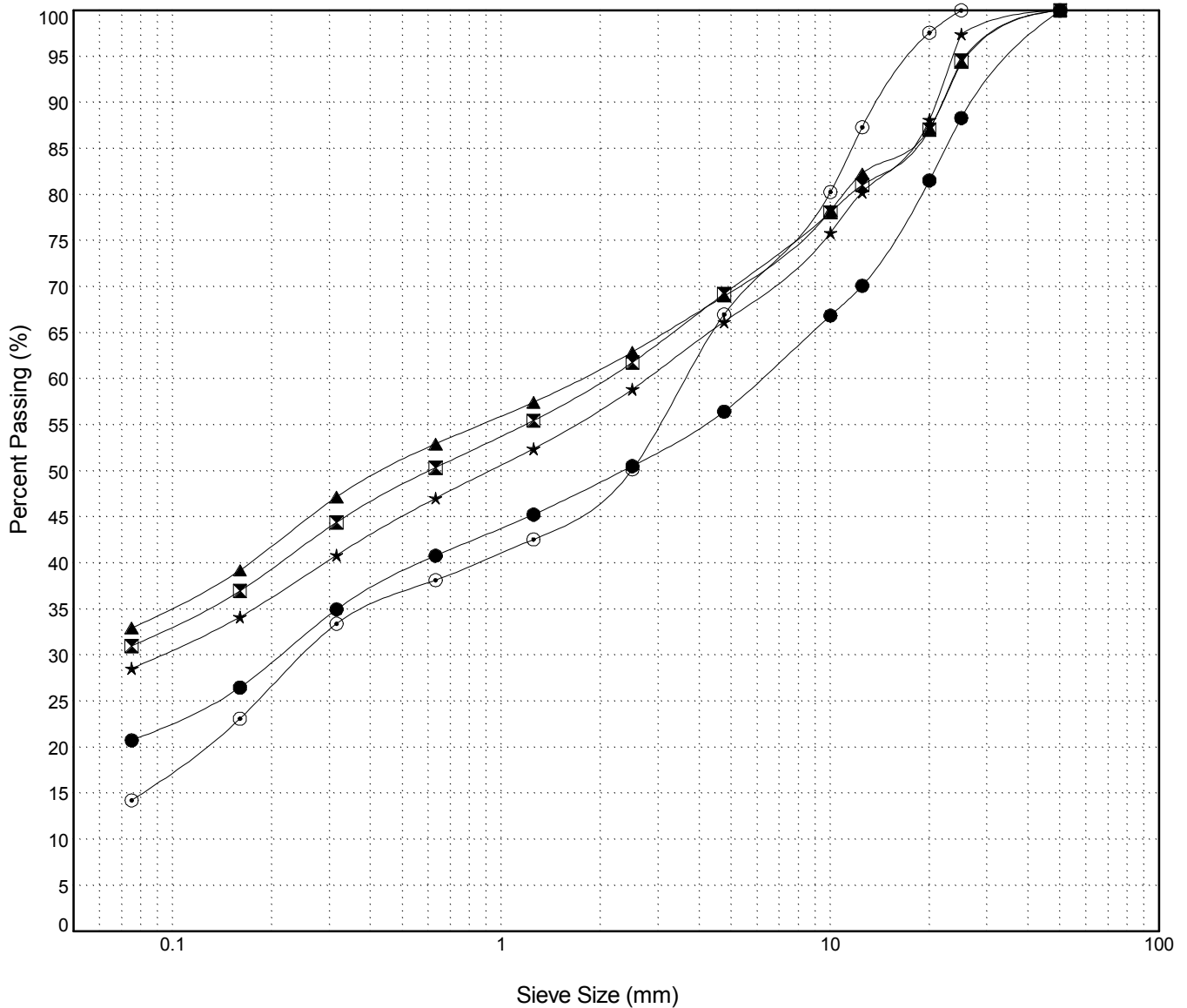
GRAIN SIZE ANALYSIS	Errosion Investigation	SOURCE/TP#: 854-5124
Donjek Drilling	254.5 LHS	PROJECT NO: 552 202102 1208 1-1
CME-75 6" Auger	Coordinates:Z08V N6795880.9m E471189.4m	ELEVATION: m

Master Revised July 2013

Field #	Lab #	Depth	Classification	%H2O	LL	PL	PI	Cc	Cu
● 16	990	5.0 to 6.1	SILTY GRAVEL with SAND(GM)	6.8	NP	NP	NP		
☒ 17	991	6.1 to 7.0	SILTY SAND with GRAVEL(SM)	9.2	NP	NP	NP		
▲ 18	992	7.0 to 8.1	SILTY SAND with GRAVEL(SM)	9.8	NP	NP	NP		
★ 19	993	8.1 to 9.1	SILTY SAND with GRAVEL(SM)	7.5	NP	NP	NP		
⊙ 20	994	9.1 to 10.7	SILTY SAND with GRAVEL(SM)	9.0	NP	NP	NP		

Field #	Lab #	% PASSING	Sieve Size (mm)													% Breakdown				
			100.0	80.0	50.0	25.0	20.0	12.5	10.0	5.0	2.5	1.25	0.630	0.315	0.160	0.080	Gravel	Sand	Silt	Clay
● 16	990	100.0	100.0	100.0	100.0	88.3	81.5	70.1	66.9	56.4	50.5	45.3	40.8	35.0	26.5	20.8	43.6	35.7	20.8	
☒ 17	991	100.0	100.0	100.0	94.5	87.1	81.0	78.1	69.2	61.8	55.5	50.4	44.4	37.0	31.0	30.8	38.2	31.0		
▲ 18	992	100.0	100.0	100.0	94.3	87.2	82.3	78.3	69.0	62.9	57.5	52.9	47.2	39.2	33.0	31.0	36.0	33.0		
★ 19	993	100.0	100.0	100.0	97.4	88.1	80.3	75.9	66.2	58.9	52.4	47.0	40.9	34.1	28.6	33.8	37.6	28.6		
⊙ 20	994	100.0	100.0	100.0	100.0	97.6	87.3	80.3	67.0	50.2	42.6	38.1	33.4	23.1	14.2	33.0	52.7	14.2		

Silt	Sand			Gravel	
	Fine	Medium	Coarse	Fine	Coarse



Highways and Public Works
Transportation Engineering Branch

LOGGED BY: G. Kennedy
COMPILED BY: R. Stilwell
REVIEWED BY:

Pit #:
Complete: 2/13/2015 3:10:00 PM

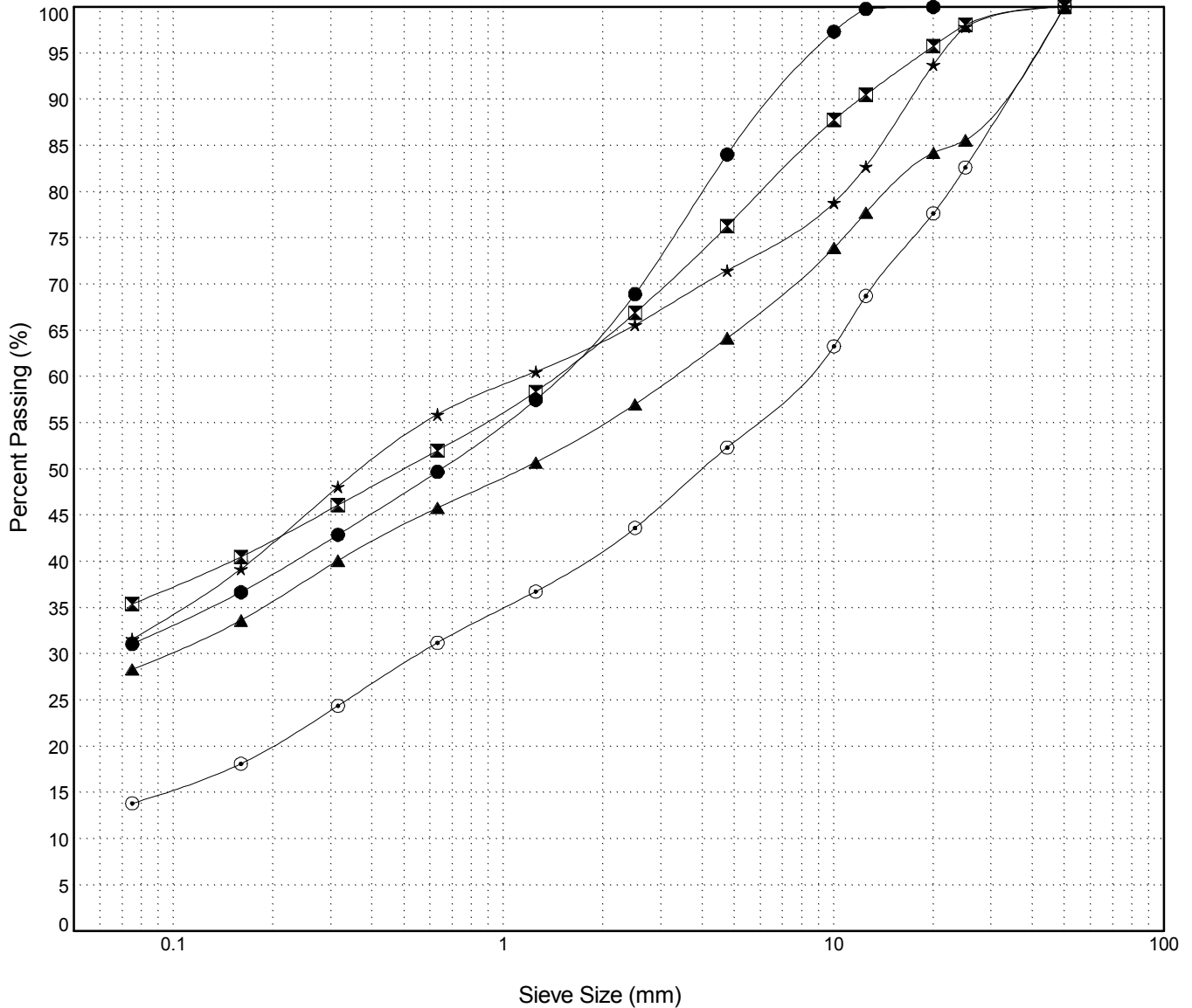
GRAIN SIZE ANALYSIS	Errosion Investigation	SOURCE/TP#: 854-5125
Donjek Drilling	254.5 LHS	PROJECT NO: 552 202102 1208 1-1
CME-75 6" Auger	Coordinates:Z08V N6795847.5m E471221.6m	ELEVATION: m

Master Revised July 2013

Field #	Lab #	Depth	Classification	%H2O	LL	PL	PI	Cc	Cu
● 01	995	0.0 to 0.9	SILTY SAND with GRAVEL(SM)	6.2	NP	NP	NP		
☒ 02	996	0.9 to 2.1	SILTY SAND with GRAVEL(SM)	10.9	NP	NP	NP		
▲ 03	997	2.1 to 3.0	SILTY SAND with GRAVEL(SM)	8.1	NP	NP	NP		
★ 04	998	3.0 to 4.0	SILTY SAND with GRAVEL(SM)	8.4	NP	NP	NP		
⊙ 05	999	4.0 to 5.0	SILTY GRAVEL with SAND(GM)	4.6	NP	NP	NP		

Field #	Lab #	% PASSING													% Breakdown				
		100.0	80.0	50.0	25.0	20.0	12.5	10.0	5.0	2.5	1.25	0.630	0.315	0.160	0.080	Gravel	Sand	Silt	Clay
● 01	995	100.0	100.0	100.0	100.0	100.0	99.8	97.3	84.0	68.9	57.5	49.7	42.9	36.7	31.1	16.0	53.0	31.1	
☒ 02	996	100.0	100.0	100.0	98.1	95.8	90.5	87.8	76.3	66.9	58.4	52.0	46.1	40.5	35.4	23.7	40.9	35.4	
▲ 03	997	100.0	100.0	100.0	85.6	84.2	77.7	73.9	64.2	57.0	50.7	45.8	40.1	33.6	28.3	35.8	35.8	28.3	
★ 04	998	100.0	100.0	100.0	97.9	93.7	82.7	78.8	71.5	65.6	60.5	55.9	48.1	39.2	31.6	28.5	39.9	31.6	
⊙ 05	999	100.0	100.0	100.0	82.6	77.7	68.7	63.3	52.3	43.6	36.8	31.2	24.4	18.1	13.8	47.7	38.5	13.8	

Silt	Sand			Gravel	
	Fine	Medium	Coarse	Fine	Coarse



Highways and Public Works
Transportation Engineering Branch

LOGGED BY: G. Kennedy
COMPILED BY: R. Stilwell
REVIEWED BY:

Pit #:
Complete: 2/13/2015 4:50:00 PM

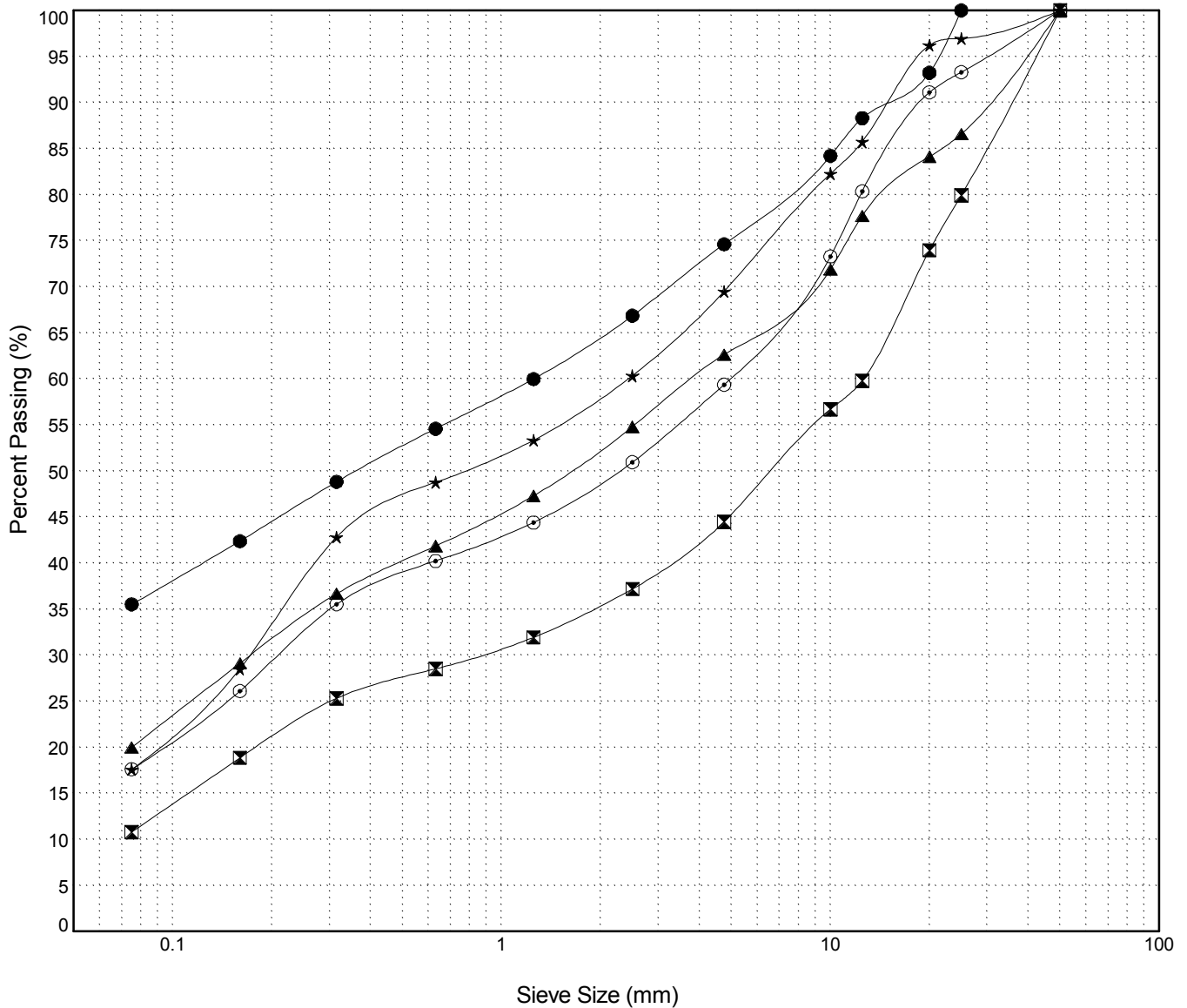
GRAIN SIZE ANALYSIS	Errosion Investigation	SOURCE/TP#: 854-5125
Donjek Drilling	254.5 LHS	PROJECT NO: 552 202102 1208 1-1
CME-75 6" Auger	Coordinates:Z08V N6795847.5m E471221.6m	ELEVATION: m

Master Revised July 2013

Field #	Lab #	Depth	Classification	%H2O	LL	PL	PI	Cc	Cu
● 06	1000	5.0 to 6.1	SILTY SAND with GRAVEL(SM)	10.9	NP	NP	NP		
☒ 07	1001	6.1 to 7.0	POORLY GRADED GRAVEL with SILT and SAND(GP-GM)	3.4	NP	NP	NP	0.8	180.9
▲ 08	1002	7.0 to 8.1	SILTY SAND with GRAVEL(SM)	5.6	NP	NP	NP		
★ 09	1003	8.1 to 9.1	SILTY SAND with GRAVEL(SM)	9.0	NP	NP	NP		
⊙ 10	1004	9.1 to 10.7	SILTY SAND with GRAVEL(SM)	8.0	NP	NP	NP		

Field #	Lab #	% PASSING	Sieve Size (mm)																% Breakdown			
			100.0	80.0	50.0	25.0	20.0	12.5	10.0	5.0	2.5	1.25	0.630	0.315	0.160	0.080	Gravel	Sand	Silt	Clay		
● 06	1000	100.0	100.0	100.0	100.0	93.2	88.3	84.2	74.6	66.8	60.0	54.6	48.8	42.4	35.5	25.4	39.1	35.5				
☒ 07	1001	100.0	100.0	100.0	79.9	74.0	59.8	56.7	44.5	37.2	31.9	28.5	25.3	18.9	10.8	55.5	33.7	10.8				
▲ 08	1002	100.0	100.0	100.0	86.6	84.1	77.7	71.9	62.6	54.8	47.3	41.8	36.7	29.1	20.0	37.4	42.6	20.0				
★ 09	1003	100.0	100.0	100.0	97.0	96.2	85.7	82.3	69.5	60.3	53.3	48.8	42.8	28.5	17.6	30.5	51.9	17.6				
⊙ 10	1004	100.0	100.0	100.0	93.3	91.1	80.3	73.3	59.4	50.9	44.4	40.2	35.5	26.1	17.6	40.6	41.7	17.6				

Silt	Sand			Gravel	
	Fine	Medium	Coarse	Fine	Coarse



Highways and Public Works
Transportation Engineering Branch

LOGGED BY: G. Kennedy
COMPILED BY: R. Stilwell
REVIEWED BY:

Pit #:
Complete: 2/13/2015 4:50:00 PM