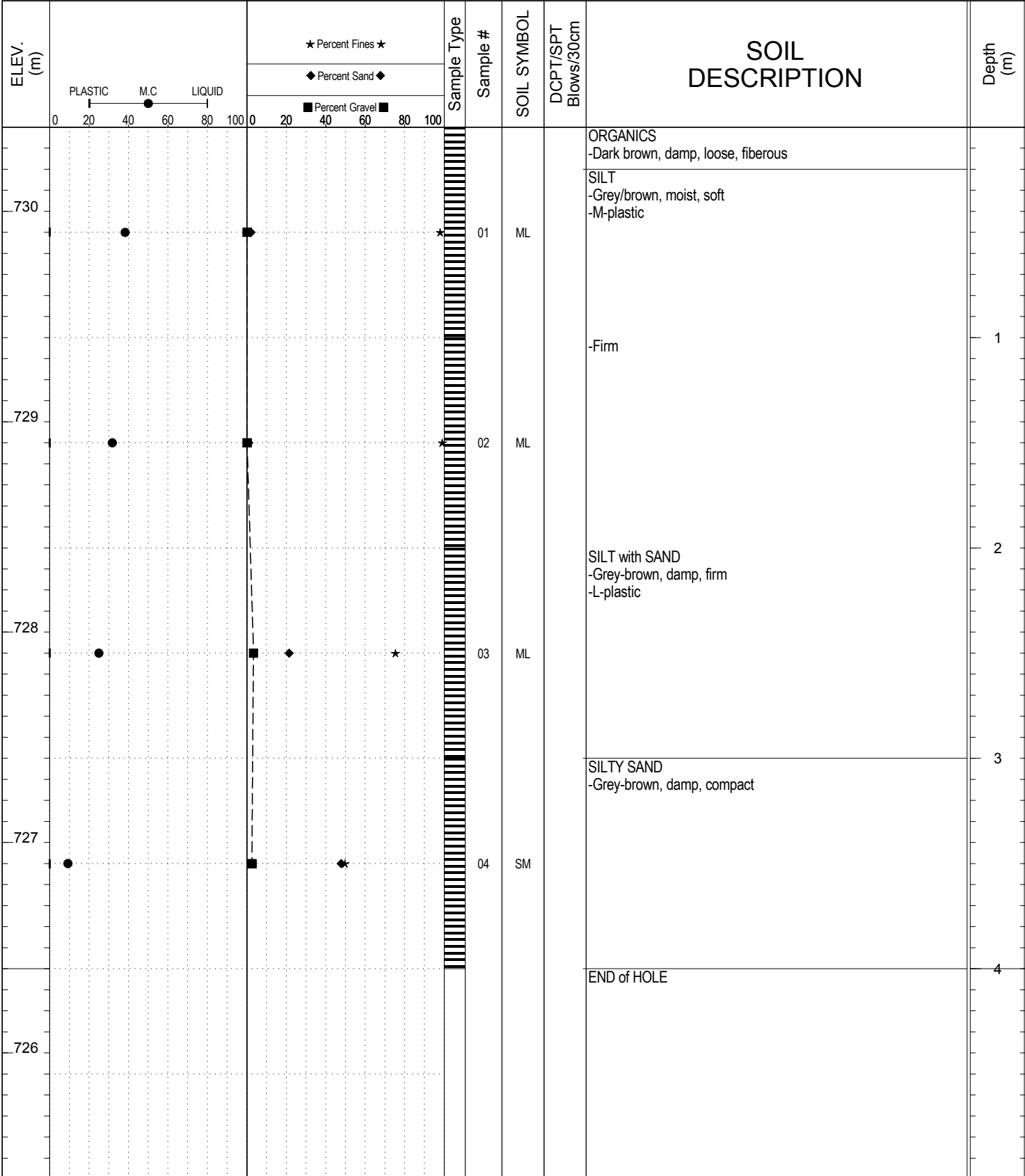


SUBSURFACE EXPLORATION AND TEST REPORT 4 SOURCE/TP#: 869-5322

Hwy 4 Sand Pit Testing, km 81.1 LHS PROJECT NO: 552-202104-2035-0661-5

CASE 9040B Coordinates: Z09V N6726087m E488642.1m ELEVATION: 730.4m

SAMPLE TYPE UNDISTURBED DCPT AUGER BULK SPT CORE

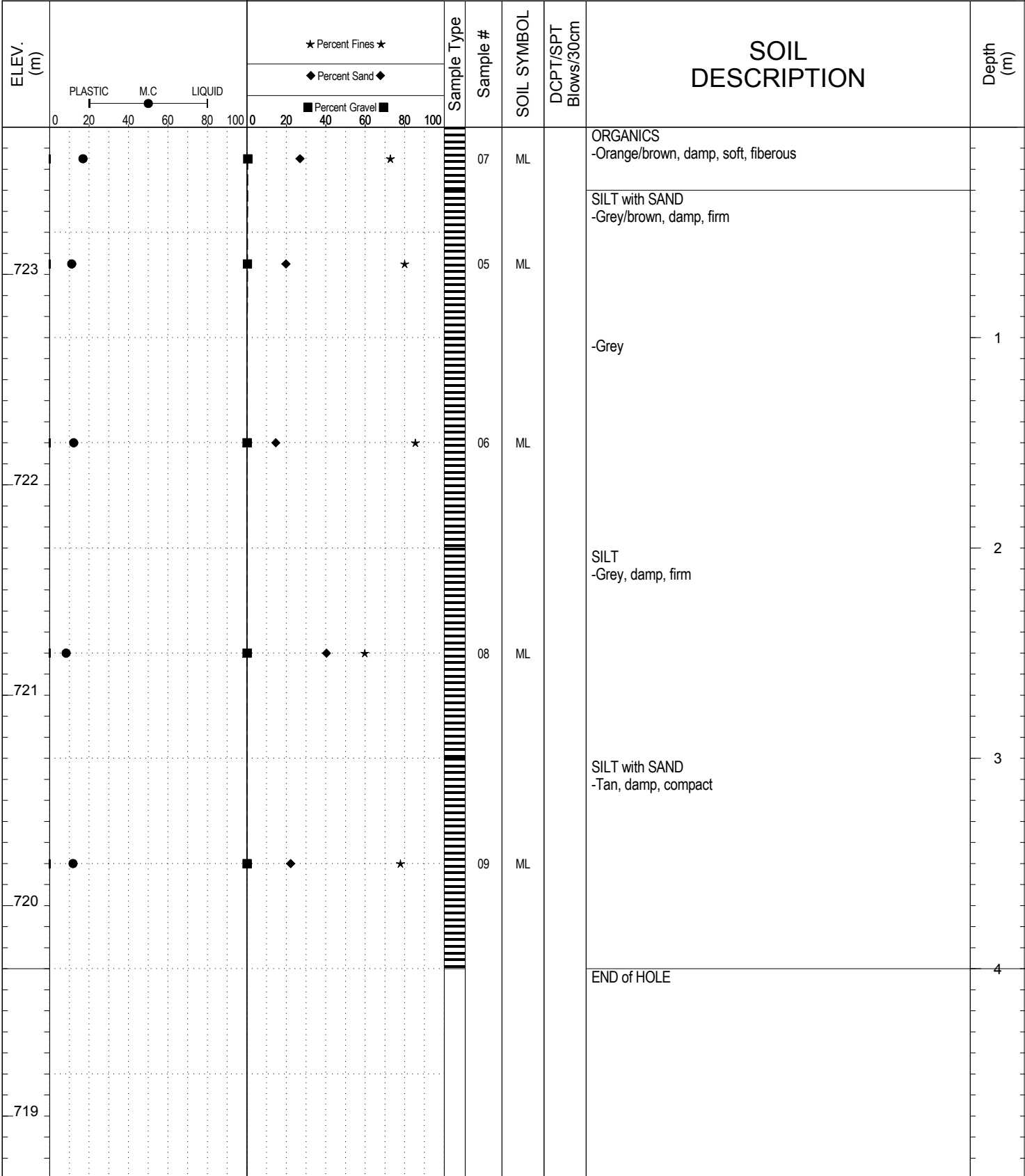


SUBSURFACE EXPLORATION AND TEST REPORT 4 SOURCE/TP#: 869-5323

Hwy 4 Sand Pit Testing, km 81.1 LHS PROJECT NO: 552-202104-2035-0661-5

CASE 9040B Coordinates: Z09V N6726019m E488619.1m ELEVATION: 723.7m

SAMPLE TYPE UNDISTURBED DCPT AUGER BULK SPT CORE

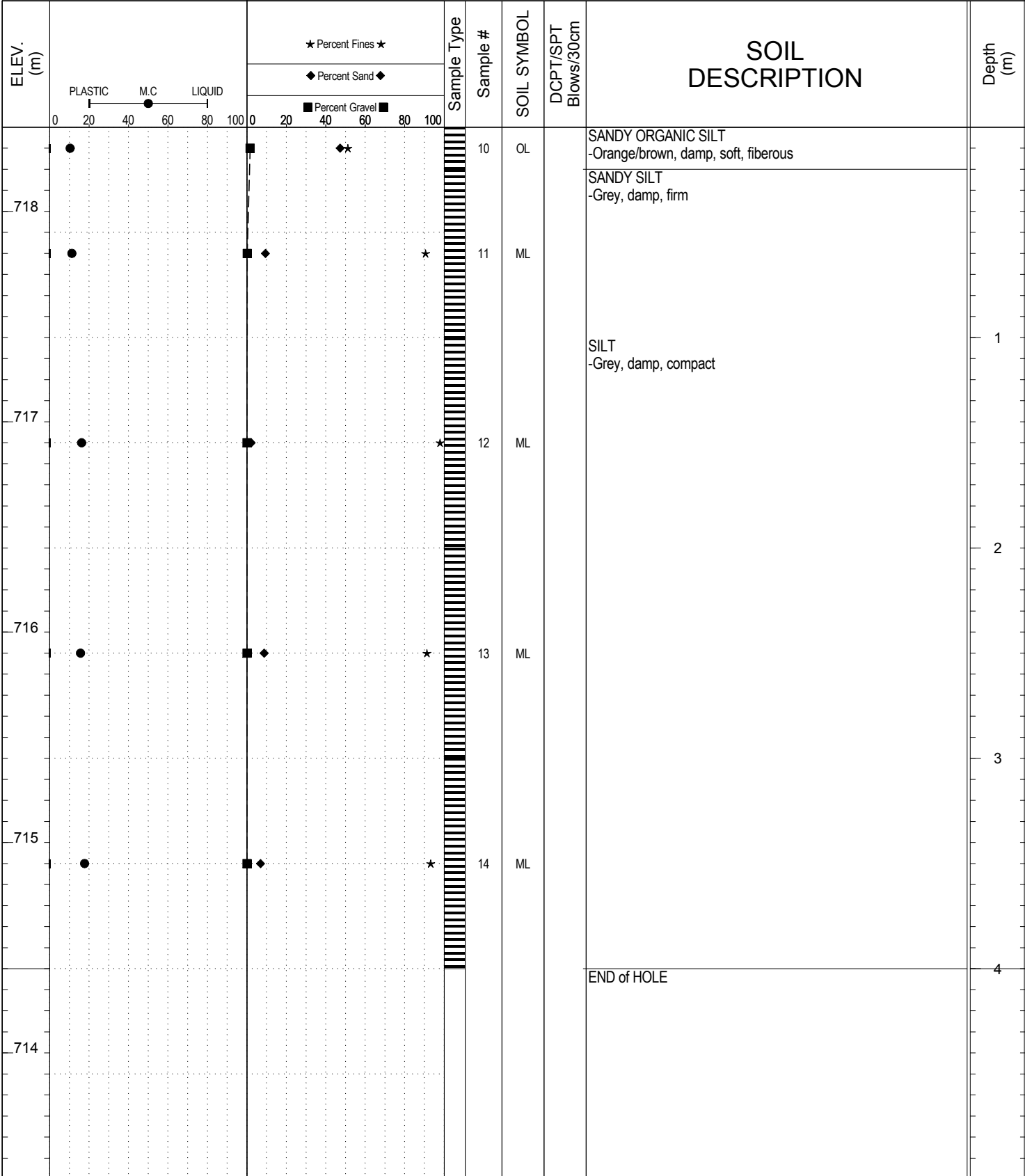


SUBSURFACE EXPLORATION AND TEST REPORT 4 SOURCE/TP#: 869-5324

Hwy 4 Sand Pit Testing, km 81.1 LHS PROJECT NO: 552-202104-2035-0661-5

CASE 9040B Coordinates: Z09V N6726042m E488582m ELEVATION: 718.4m

SAMPLE TYPE UNDISTURBED DCPT AUGER BULK SPT CORE

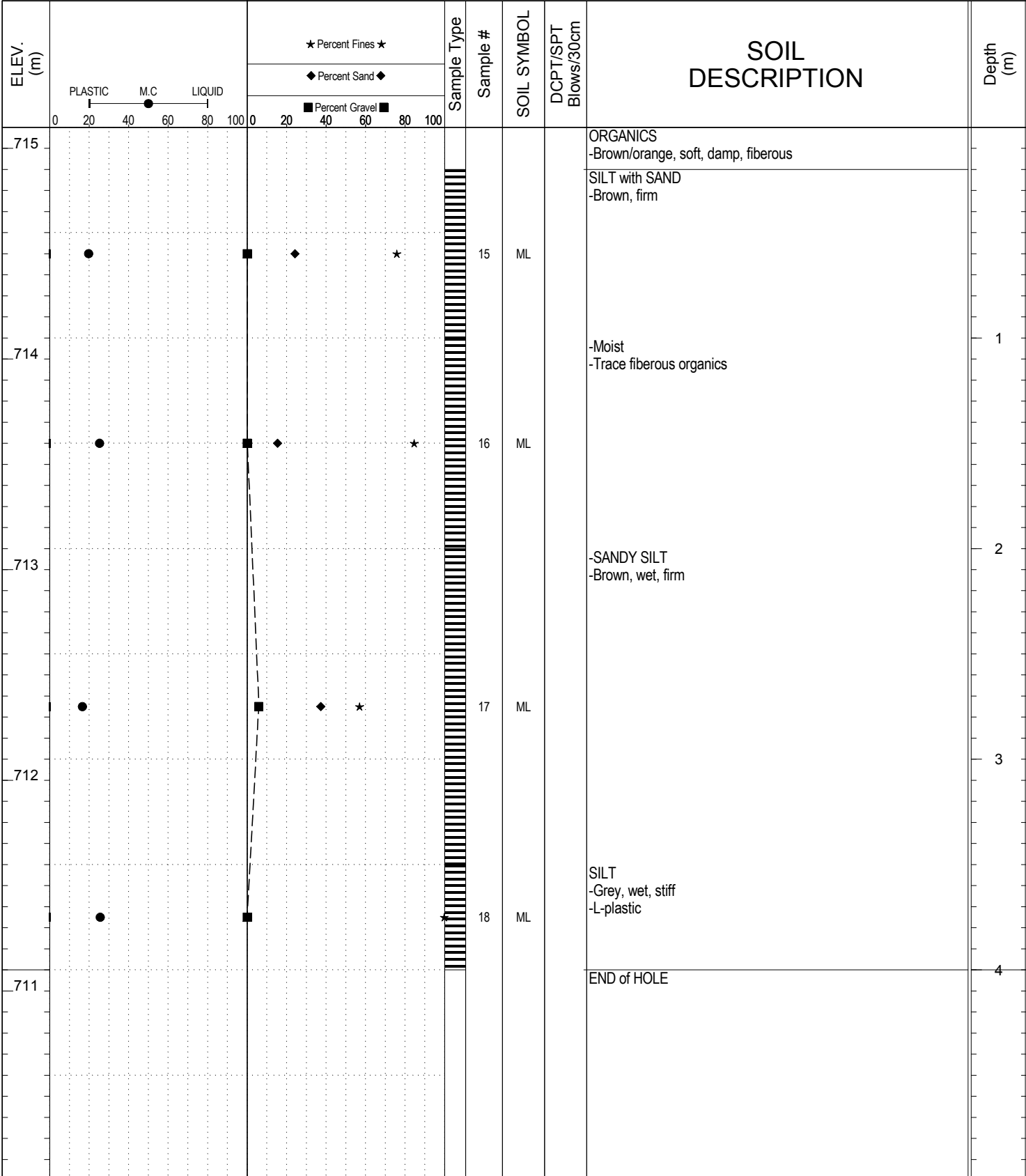


SUBSURFACE EXPLORATION AND TEST REPORT 4 SOURCE/TP#: 869-5326

Hwy 4 Sand Pit Testing, km 81.1 LHS PROJECT NO: 552-202104-2035-0661-5

CASE 9040B Coordinates: Z09V N6726102m E488406.5m ELEVATION: 715.1m

SAMPLE TYPE UNDISTURBED DCPT AUGER BULK SPT CORE



SUBSURFACE EXPLORATION AND TEST REPORT	4	SOURCE/TP#: 869-5326
	Hwy 4 Sand Pit Testing, km 81.1 LHS	PROJECT NO: 552-202104-2035-0661-5
CASE 9040B	Coordinates: Z09V N6726102m E488406.5m	ELEVATION: 715.1m

PHOTOS

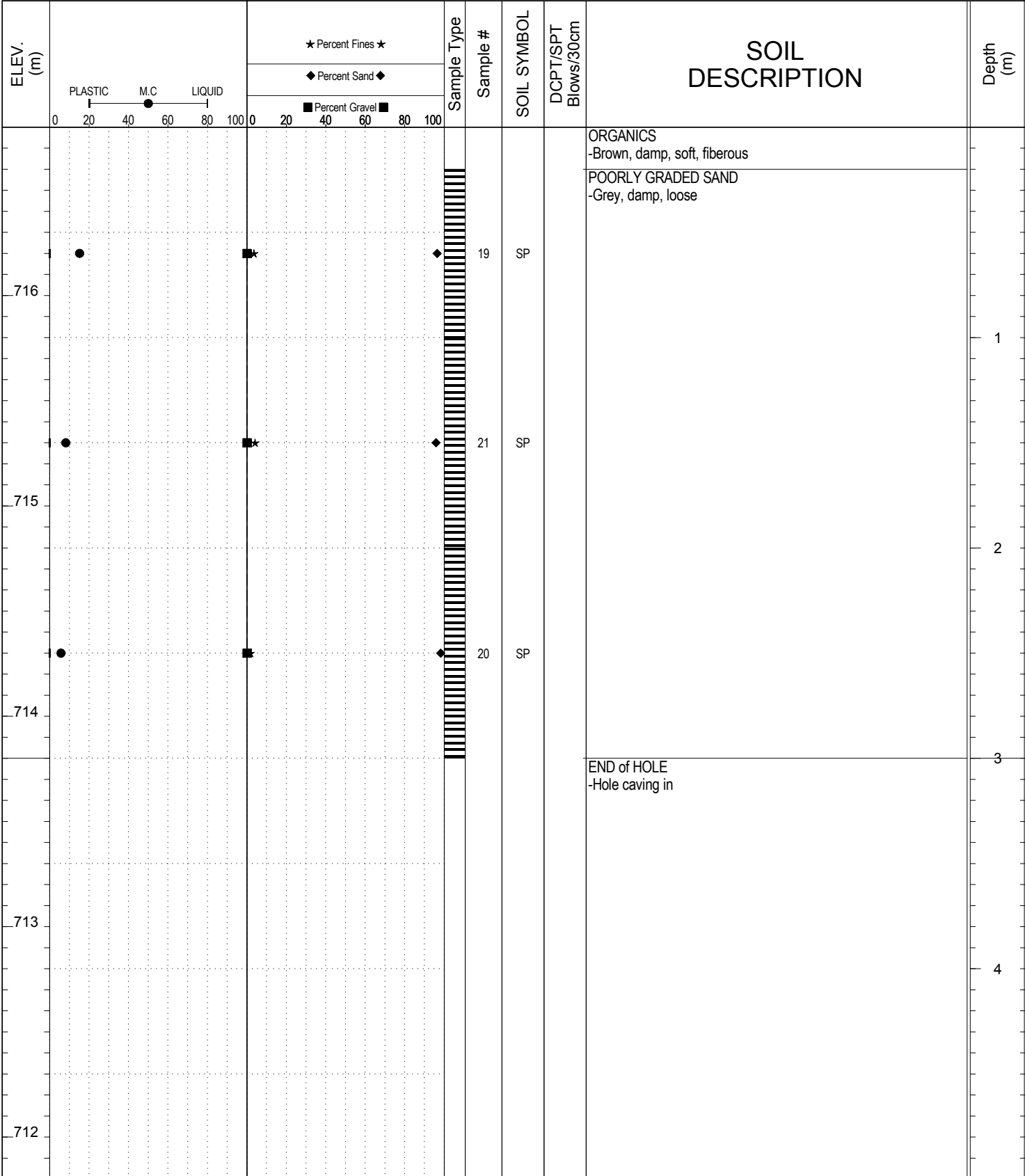


SUBSURFACE EXPLORATION AND TEST REPORT 4 SOURCE/TP#: 869-5327

Hwy 4 Sand Pit Testing, km 81.1 LHS PROJECT NO: 552-202104-2035-0661-5

CASE 9040B Coordinates: Z09V N6726155m E488388.4m ELEVATION: 716.8m

SAMPLE TYPE UNDISTURBED DCPT AUGER BULK SPT CORE

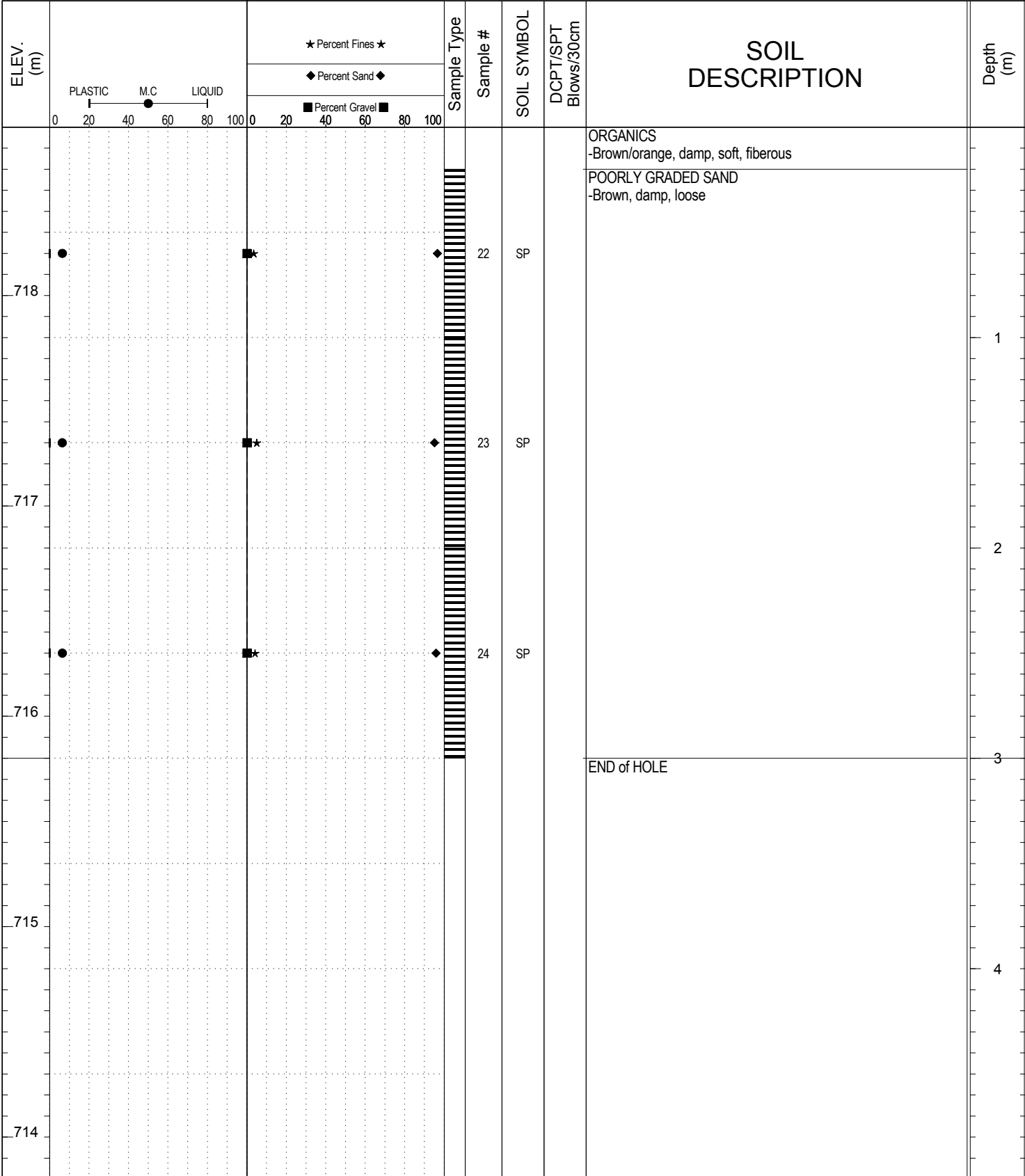


SUBSURFACE EXPLORATION AND TEST REPORT 4 SOURCE/TP#: 869-5328

Hwy 4 Sand Pit Testing, km 81.1 LHS PROJECT NO: 552-202104-2035-0661-5

CASE 9040B Coordinates: Z09V N6726197m E488449.8m ELEVATION: 718.8m

SAMPLE TYPE UNDISTURBED DCPT AUGER BULK SPT CORE

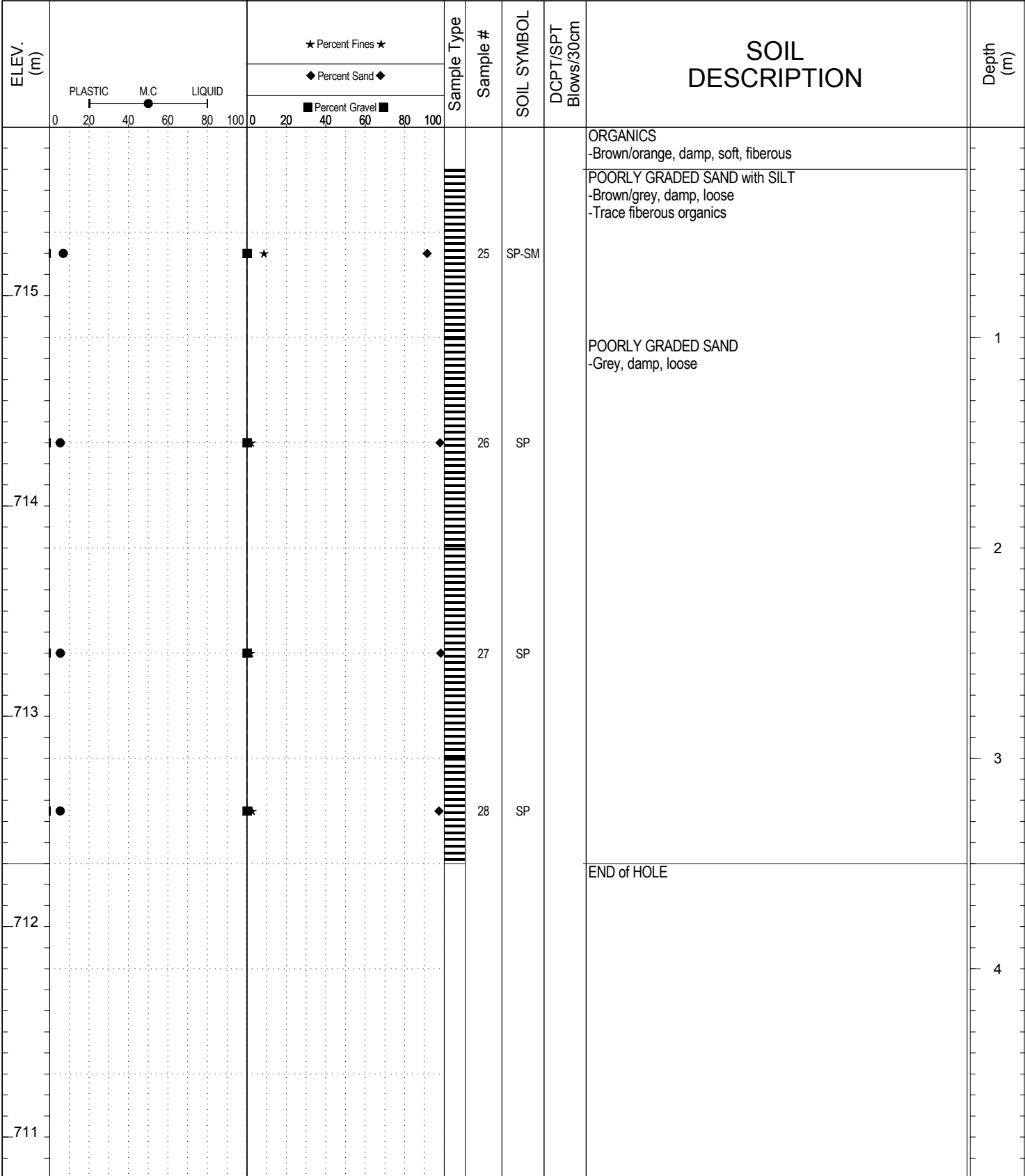


SUBSURFACE EXPLORATION AND TEST REPORT 4 SOURCE/TP#: 869-5329

Hwy 4 Sand Pit Testing, km 81.1 LHS PROJECT NO: 552-202104-2035-0661-5

CASE 9040B Coordinates: Z09V N6726190m E488494.9m ELEVATION: 715.8m

SAMPLE TYPE UNDISTURBED DCPT AUGER BULK SPT CORE

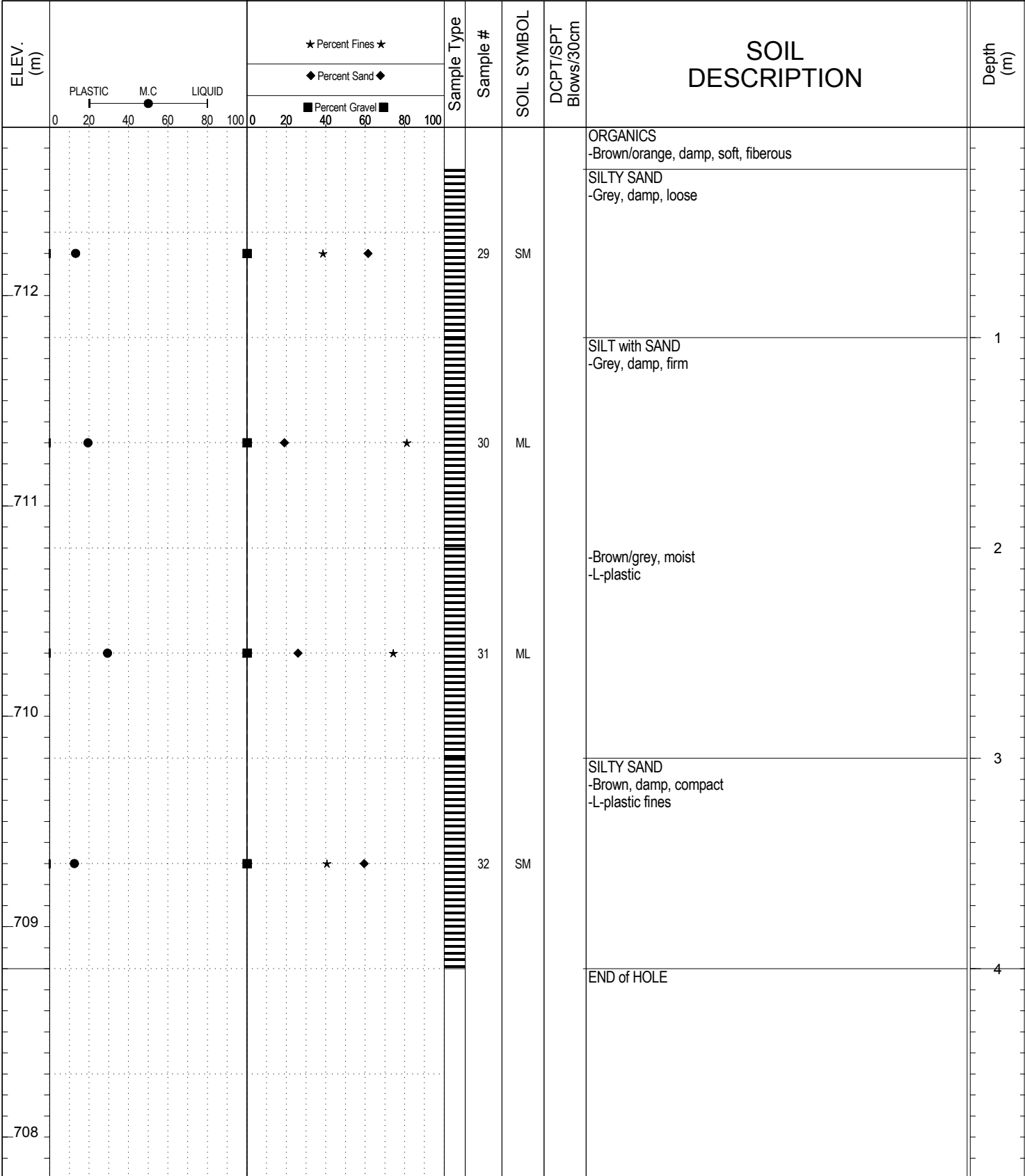


SUBSURFACE EXPLORATION AND TEST REPORT 4 SOURCE/TP#: 869-5330

Hwy 4 Sand Pit Testing, km 81.1 LHS PROJECT NO: 552-202104-2035-0661-5

CASE 9040B Coordinates: Z09V N6726240m E488406.7m ELEVATION: 712.8m

SAMPLE TYPE UNDISTURBED DCPT AUGER BULK SPT CORE

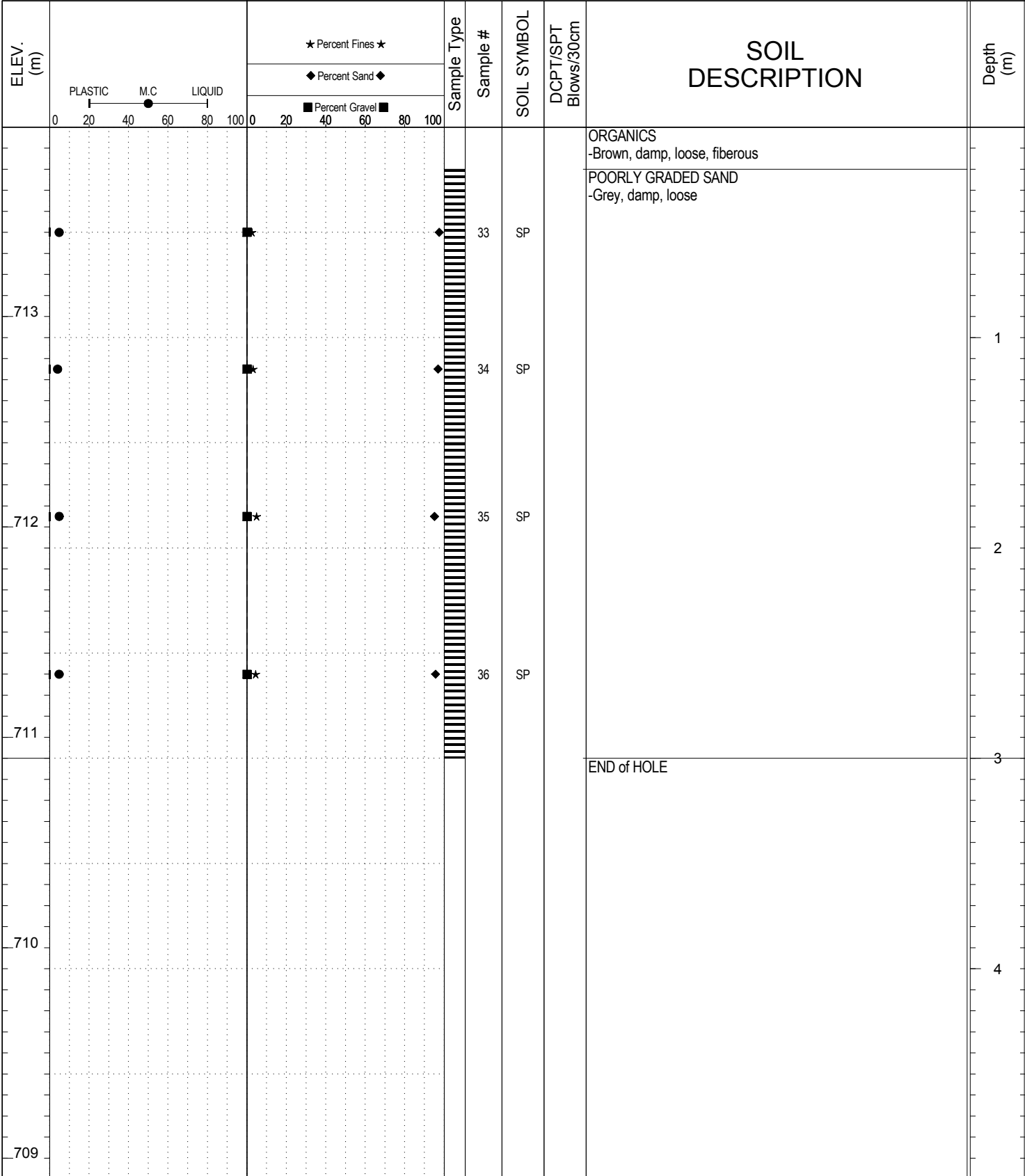


SUBSURFACE EXPLORATION AND TEST REPORT 4 SOURCE/TP#: 869-5331

Hwy 4 Sand Pit Testing, km 81.1 LHS PROJECT NO: 552-202104-2035-0661-5

CASE 9040B Coordinates: Z09V N6726299m E488378.6m ELEVATION: 713.9m

SAMPLE TYPE UNDISTURBED DCPT AUGER BULK SPT CORE

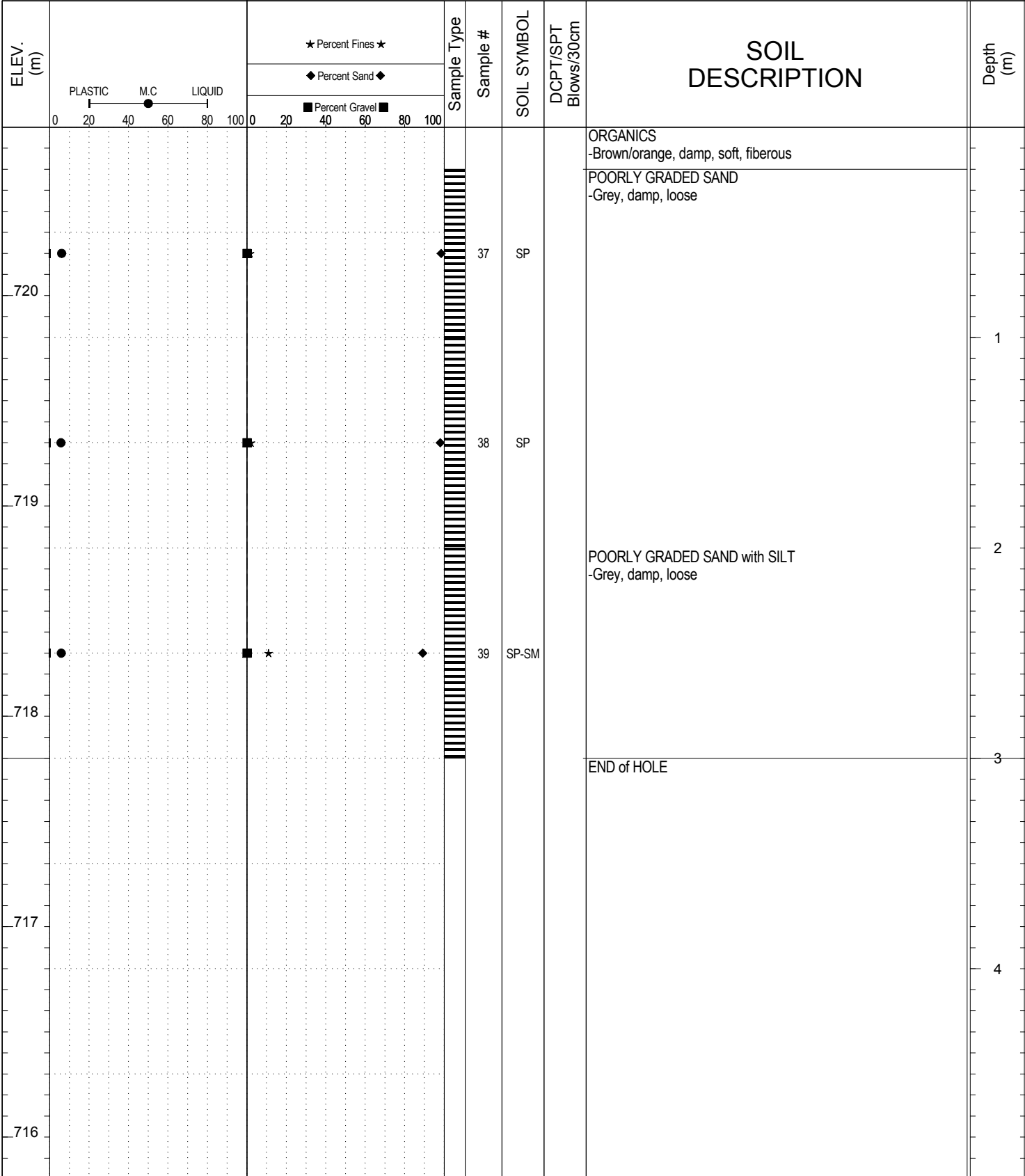


SUBSURFACE EXPLORATION AND TEST REPORT 4 SOURCE/TP#: 869-5332

Hwy 4 Sand Pit Testing, km 81.1 LHS PROJECT NO: 552-202104-2035-0661-5

CASE 9040B Coordinates: Z09V N6726337m E488453.9m ELEVATION: 720.8m

SAMPLE TYPE UNDISTURBED DCPT AUGER BULK SPT CORE

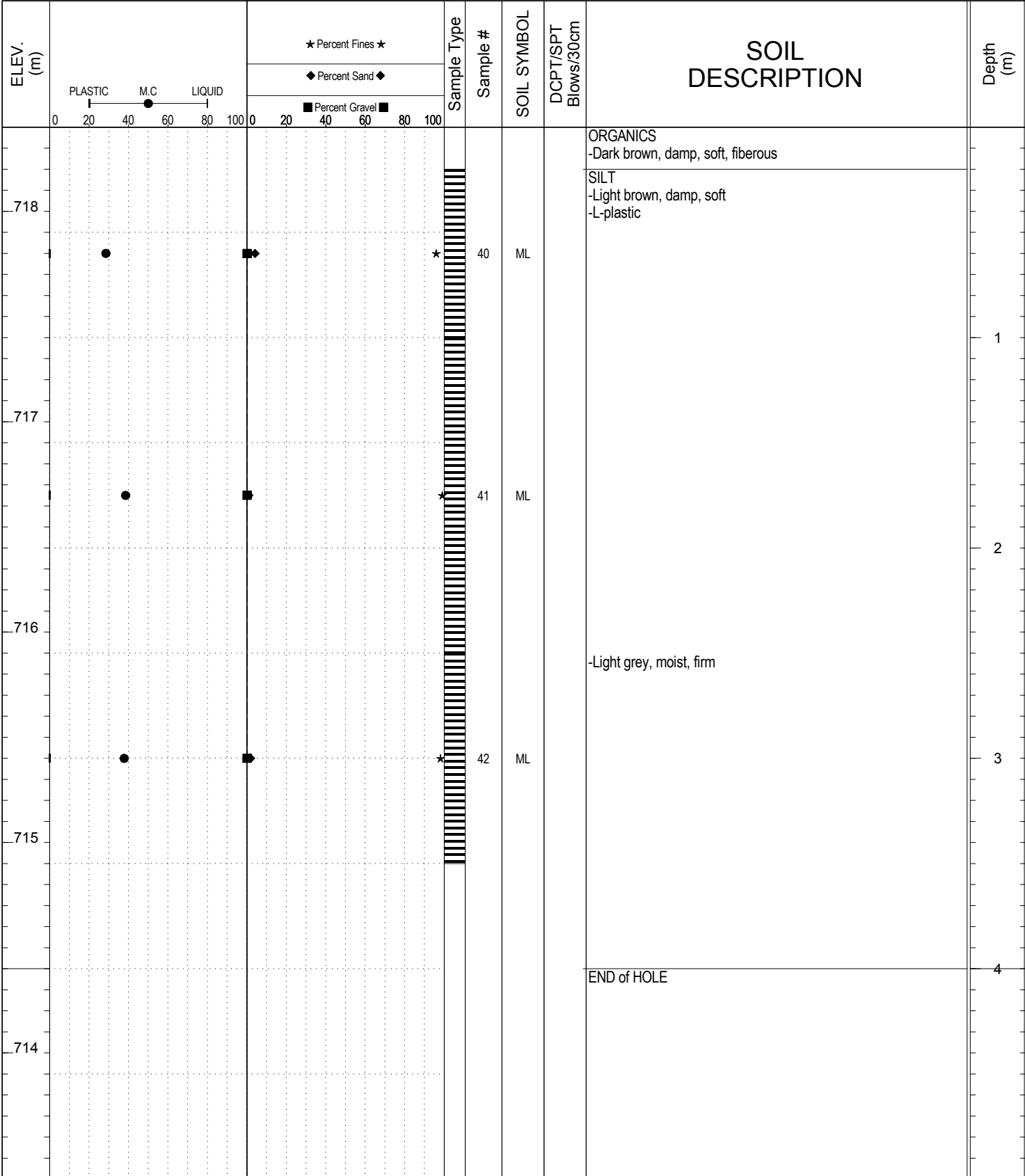


SUBSURFACE EXPLORATION AND TEST REPORT 4 SOURCE/TP#: 869-5333

Hwy 4 Sand Pit Testing, km 81.1 LHS PROJECT NO: 552-202104-2035-0661-5

CASE 9040B Coordinates: Z09V N6726399m E488546.7m ELEVATION: 718.4m

SAMPLE TYPE UNDISTURBED DCPT AUGER BULK SPT CORE

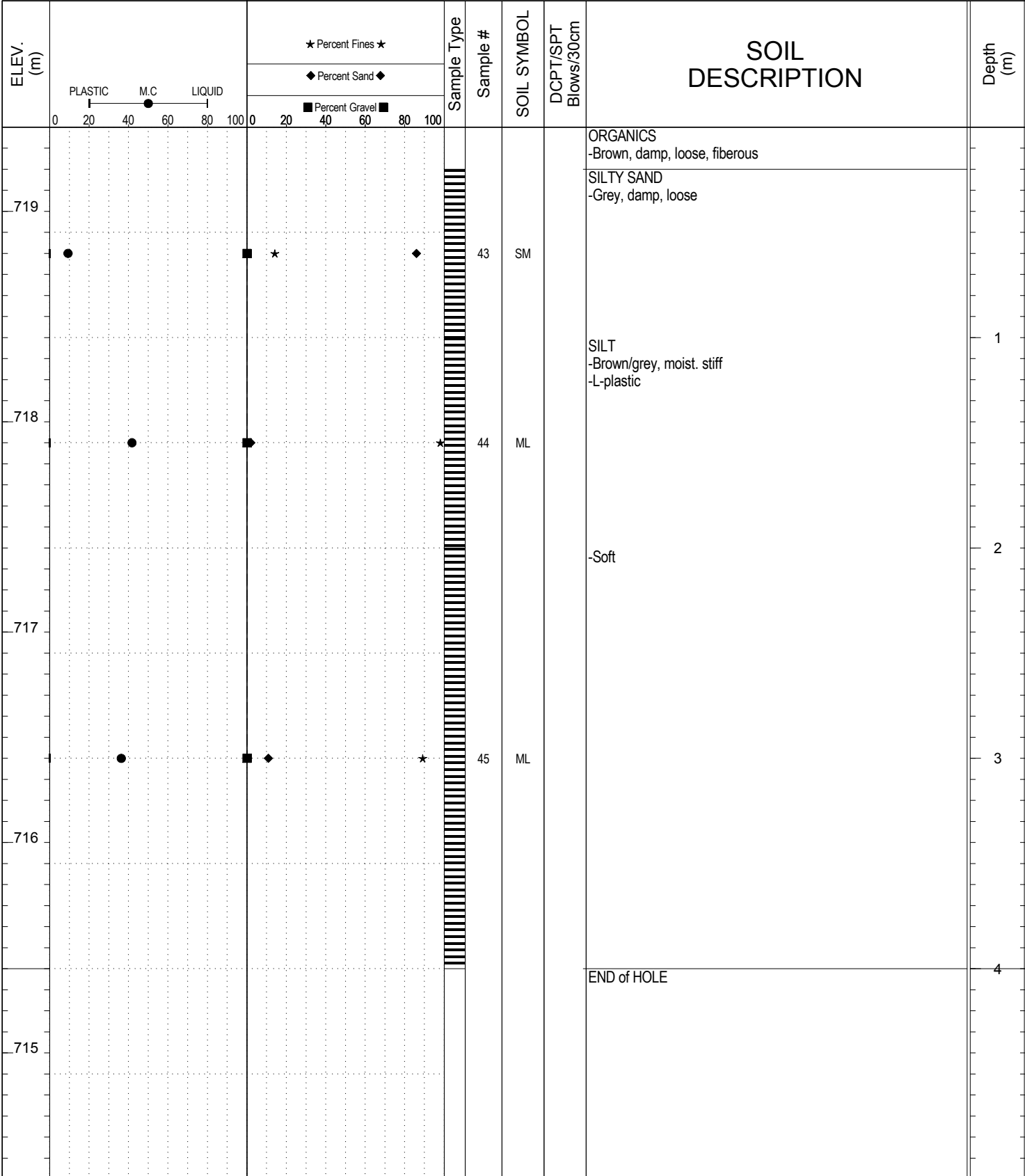


SUBSURFACE EXPLORATION AND TEST REPORT 4 SOURCE/TP#: 869-5334

Hwy 4 Sand Pit Testing, km 81.1 LHS PROJECT NO: 552-202104-2035-0661-5

CASE 9040B Coordinates: Z09V N6726723m E488418.5m ELEVATION: 719.4m

SAMPLE TYPE UNDISTURBED DCPT AUGER BULK SPT CORE

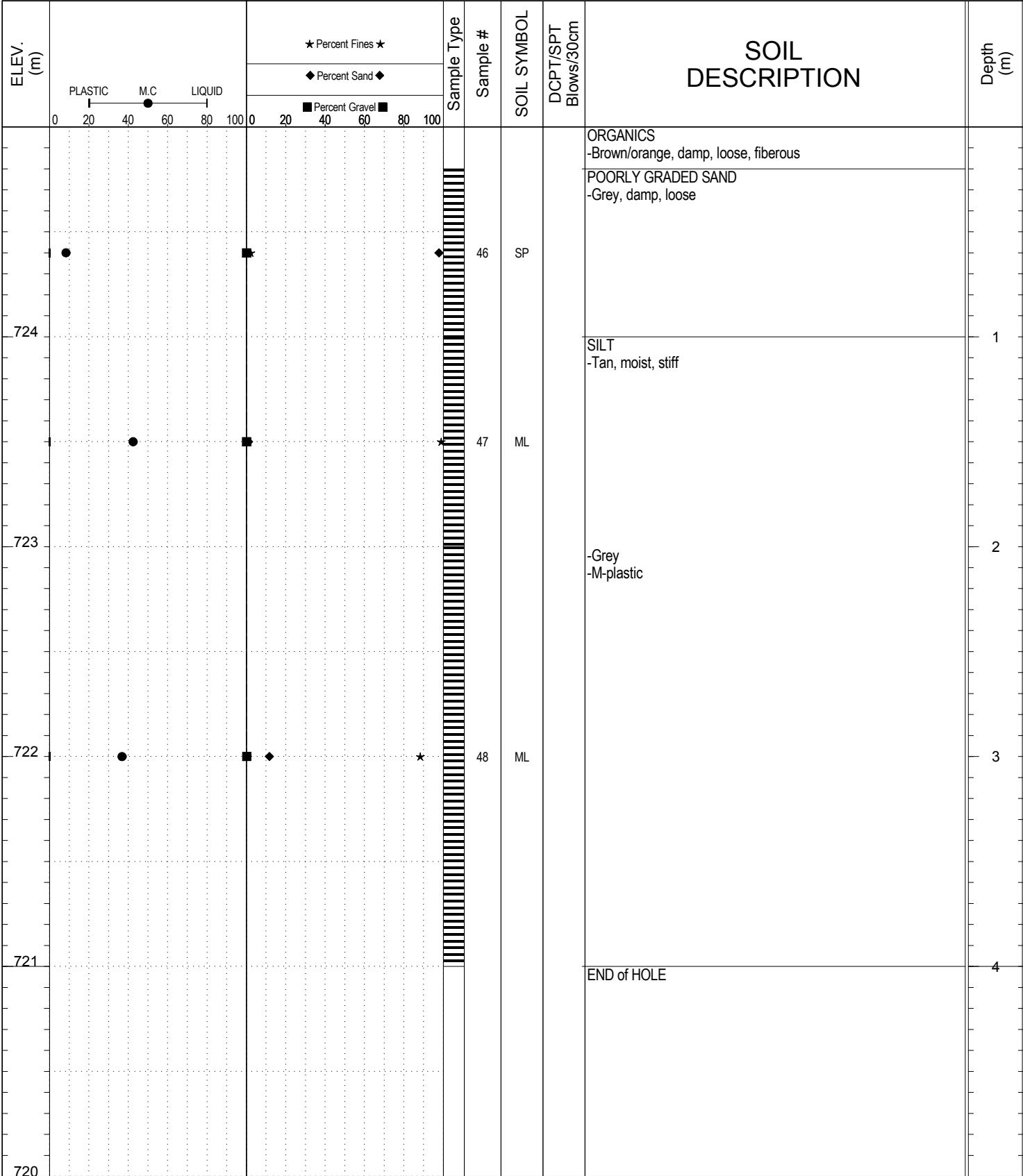


SUBSURFACE EXPLORATION AND TEST REPORT 4 SOURCE/TP#: 869-5335

Hwy 4 Sand Pit Testing, km 81.1 LHS PROJECT NO: 552-202104-2035-0661-5

CASE 9040B Coordinates: Z09V N6726757m E488497.7m ELEVATION: 725m

SAMPLE TYPE UNDISTURBED DCPT AUGER BULK SPT CORE

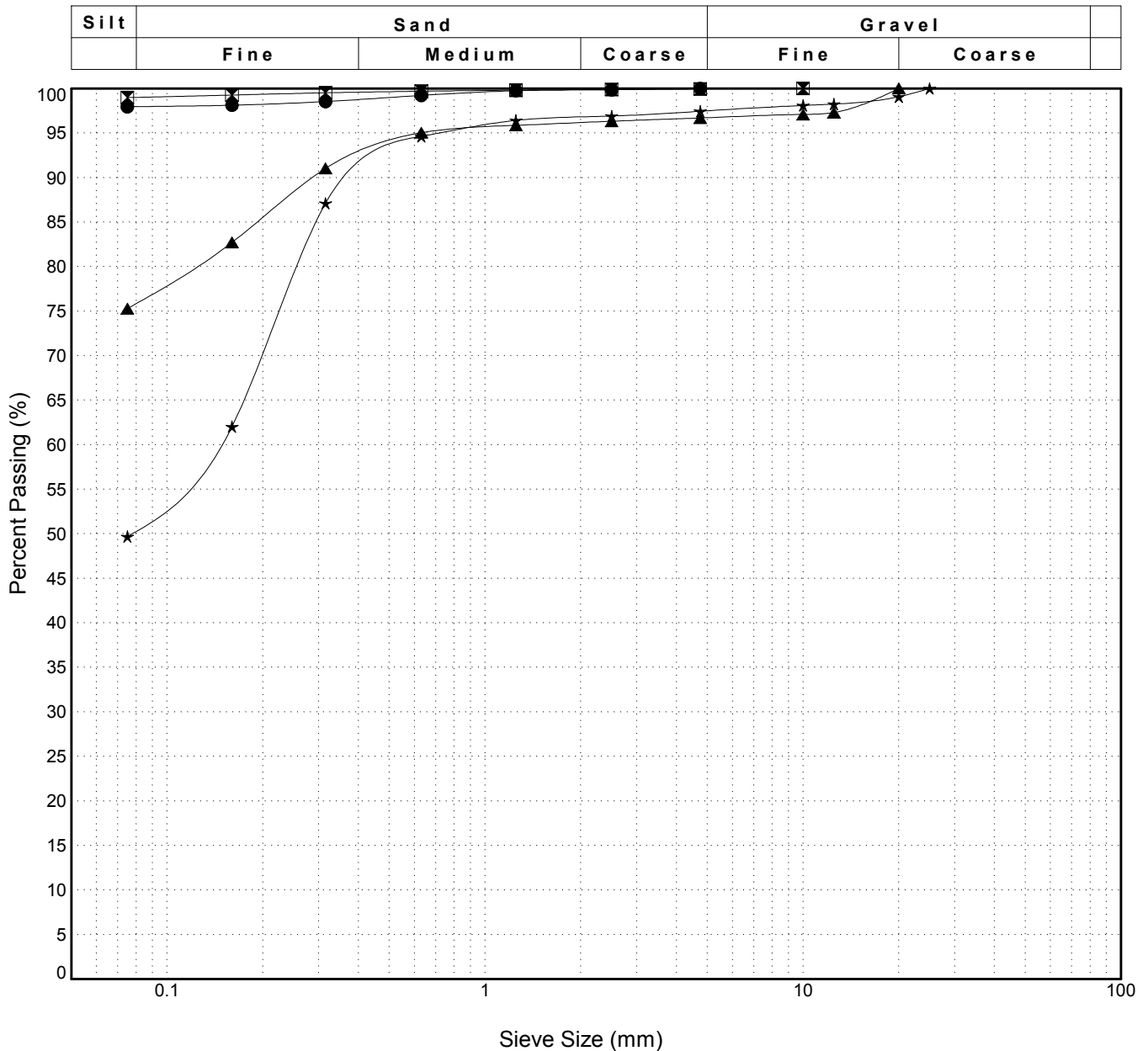


GRAIN SIZE ANALYSIS	Hwy 4 Sand Pit Testing	SOURCE/TP#: 869-5322
	km 81.1 LHS	PROJECT NO: 552-202104-2035-0661-5
CASE 9040B	Coordinates:Z09V N6726087m E488642.1m	ELEVATION: 730.4m

Master Revised July 2013

Field #	Lab #	Depth	Classification	%H2O	LL	PL	PI	Cc	Cu
● 01	243	0.0 to 1.0	SILT(ML)	38.2	NP	NP	NP		
☒ 02	244	1.0 to 2.0	SILT(ML)	31.7	NP	NP	NP		
▲ 03	245	2.0 to 3.0	SILT with SAND(ML)	24.9	NP	NP	NP		
★ 04	246	3.0 to 4.0	SILTY SAND(SM)	9.2	NP	NP	NP		

Field #	Lab #	% PASSING															% Breakdown			
			100.0	80.0	50.0	25.0	20.0	12.5	10.0	5.0	2.5	1.25	0.630	0.315	0.160	0.080	Gravel	Sand	Silt	Clay
● 01	243	100.0	100.0	100.0	100.0	100.0	100.0	100.0	100.0	99.9	99.7	99.2	98.5	98.1	98.0	0.0	2.0	98.0		
☒ 02	244	100.0	100.0	100.0	100.0	100.0	100.0	100.0	100.0	99.9	99.8	99.7	99.5	99.3	99.0	0.0	1.0	99.0		
▲ 03	245	100.0	100.0	100.0	100.0	100.0	97.3	97.1	96.7	96.3	95.9	95.0	91.0	82.7	75.3	3.3	21.4	75.3		
★ 04	246	100.0	100.0	100.0	100.0	99.1	98.3	98.1	97.4	96.9	96.4	94.6	87.1	62.0	49.7	2.6	47.8	49.7		



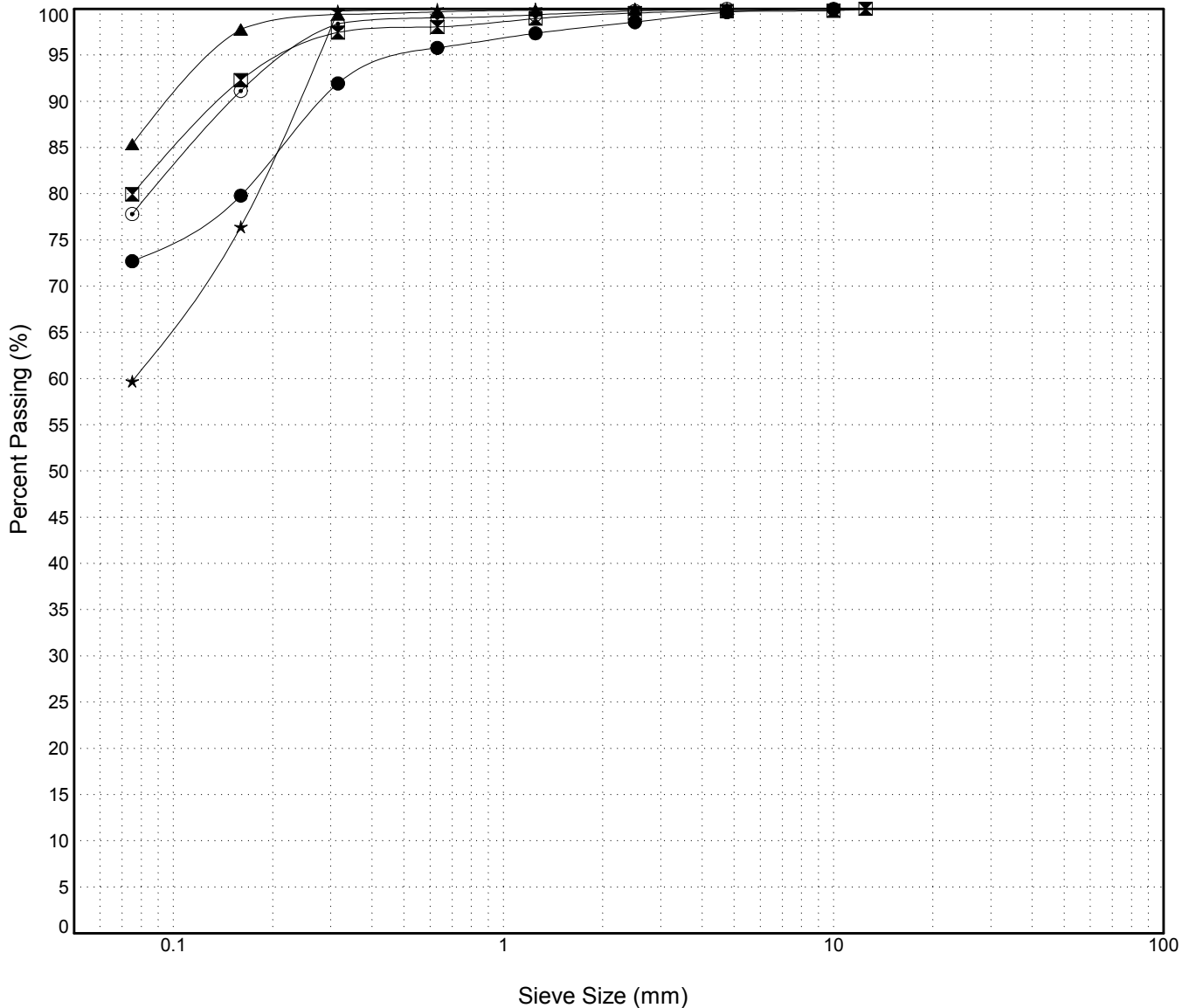
GRAIN SIZE ANALYSIS	Hwy 4 Sand Pit Testing	SOURCE/TP#: 869-5323
	km 81.1 LHS	PROJECT NO: 552-202104-2035-0661-5
CASE 9040B	Coordinates:Z09V N6726019m E488619.1m	ELEVATION: 723.7m

Master Revised July 2013

Field #	Lab #	Depth	Classification	%H2O	LL	PL	PI	Cc	Cu
● 07	249	0.0 to 0.3	SILT with SAND(ML)	16.9	NP	NP	NP		
☒ 05	247	0.3 to 1.0	SILT with SAND(ML)	11.2	NP	NP	NP		
▲ 06	248	1.0 to 2.0	SILT(ML)	12.2	NP	NP	NP		
★ 08	250	2.0 to 3.0	SANDY SILT(ML)	8.3	NP	NP	NP		
⊙ 09	251	3.0 to 4.0	SILT with SAND(ML)	11.8	NP	NP	NP		

Field #	Lab #	% PASSING													% Breakdown				
		100.0	80.0	50.0	25.0	20.0	12.5	10.0	5.0	2.5	1.25	0.630	0.315	0.160	0.080	Gravel	Sand	Silt	Clay
● 07	249	100.0	100.0	100.0	100.0	100.0	100.0	100.0	99.6	98.6	97.4	95.8	91.9	79.8	72.7	0.4	26.9	72.7	
☒ 05	247	100.0	100.0	100.0	100.0	100.0	100.0	99.8	99.8	99.6	98.9	98.1	97.4	92.3	79.9	0.2	19.8	79.9	
▲ 06	248	100.0	100.0	100.0	100.0	100.0	100.0	100.0	100.0	100.0	99.9	99.7	99.4	97.8	85.4	0.0	14.6	85.4	
★ 08	250	100.0	100.0	100.0	100.0	100.0	100.0	100.0	100.0	100.0	100.0	100.0	99.8	76.4	59.7	0.0	40.3	59.7	
⊙ 09	251	100.0	100.0	100.0	100.0	100.0	100.0	100.0	100.0	99.8	99.4	99.0	98.4	91.1	77.8	0.0	22.2	77.8	

Silt	Sand			Gravel	
	Fine	Medium	Coarse	Fine	Coarse

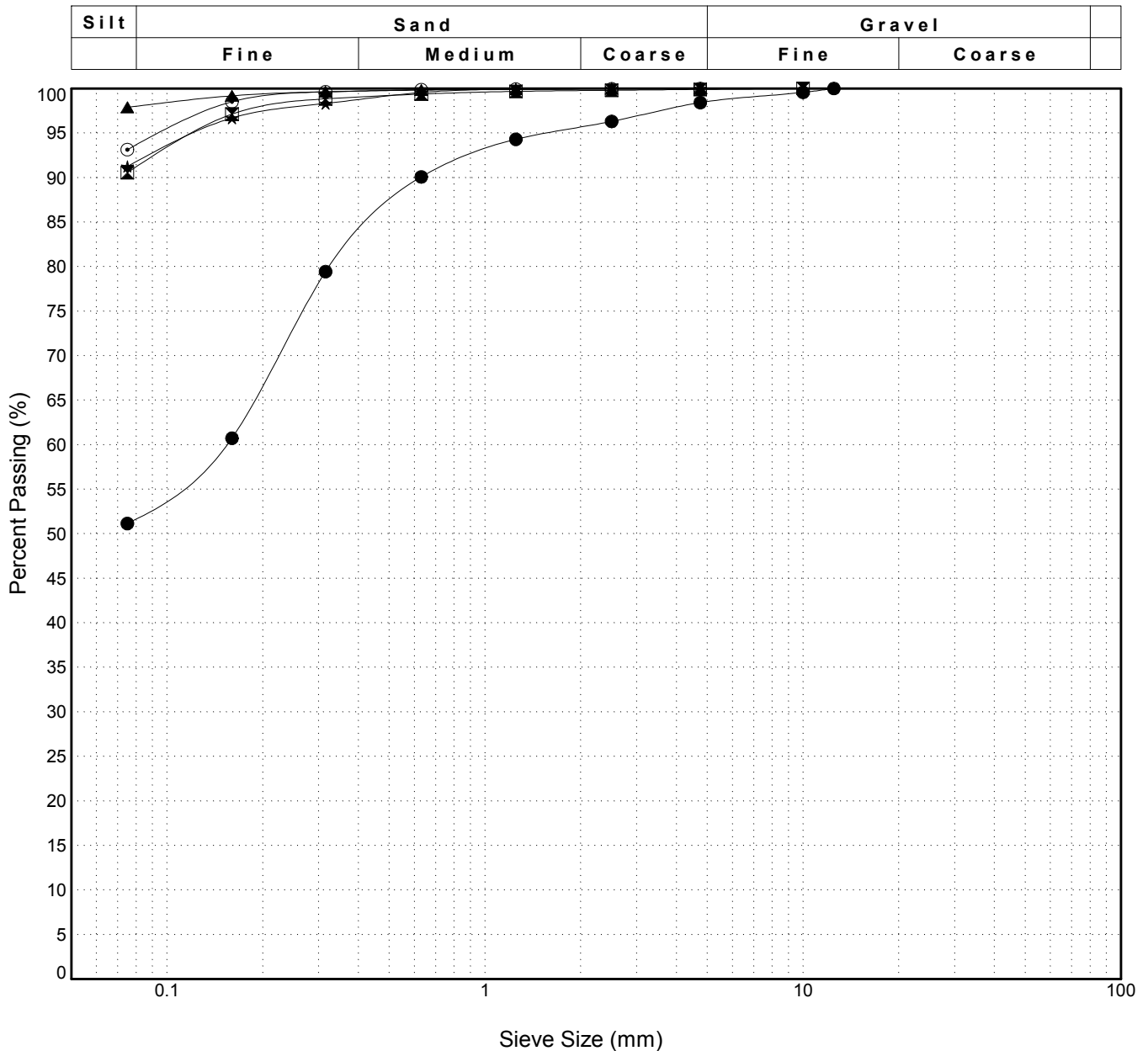


GRAIN SIZE ANALYSIS	Hwy 4 Sand Pit Testing	SOURCE/TP#: 869-5324
	km 81.1 LHS	PROJECT NO: 552-202104-2035-0661-5
CASE 9040B	Coordinates:Z09V N6726042m E488582m	ELEVATION: 718.4m

Master Revised July 2013

Field #	Lab #	Depth	Classification	%H2O	LL	PL	PI	Cc	Cu
● 10	252	0.0 to 0.2	SANDY ORGANIC SILT(OL)	10.4	NP	NP	NP		
☒ 11	253	0.2 to 1.0	SILT(ML)	11.2	NP	NP	NP		
▲ 12	254	1.0 to 2.0	SILT(ML)	16.2	NP	NP	NP		
★ 13	255	2.0 to 3.0	SILT(ML)	15.6	NP	NP	NP		
⊙ 14	256	3.0 to 4.0	SILT(ML)	17.7	NP	NP	NP		

Field #	Lab #	% PASSING													% Breakdown				
		100.0	80.0	50.0	25.0	20.0	12.5	10.0	5.0	2.5	1.25	0.630	0.315	0.160	0.080	Gravel	Sand	Silt	Clay
● 10	252	100.0	100.0	100.0	100.0	100.0	100.0	99.6	98.4	96.3	94.3	90.1	79.4	60.7	51.2	1.6	47.3	51.2	
☒ 11	253	100.0	100.0	100.0	100.0	100.0	100.0	100.0	99.9	99.8	99.7	99.4	98.8	97.1	90.5	0.1	9.4	90.5	
▲ 12	254	100.0	100.0	100.0	100.0	100.0	100.0	100.0	100.0	100.0	99.9	99.8	99.6	99.2	97.9	0.0	2.1	97.9	
★ 13	255	100.0	100.0	100.0	100.0	100.0	100.0	100.0	100.0	100.0	99.9	99.6	98.3	96.7	91.3	0.0	8.7	91.3	
⊙ 14	256	100.0	100.0	100.0	100.0	100.0	100.0	100.0	100.0	100.0	99.9	99.9	99.6	98.5	93.1	0.0	6.9	93.1	



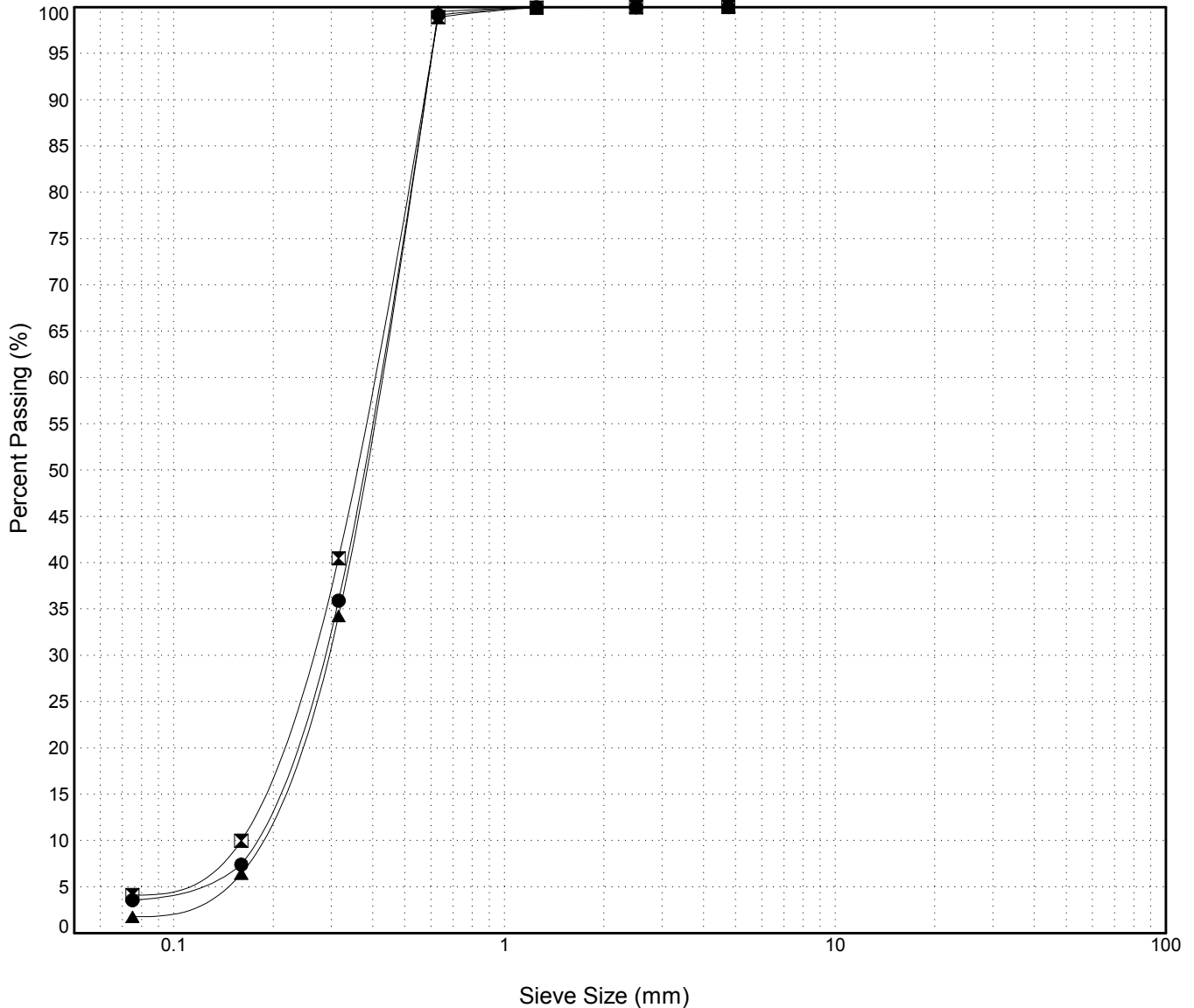
GRAIN SIZE ANALYSIS	Hwy 4 Sand Pit Testing	SOURCE/TP#: 869-5327
	km 81.1 LHS	PROJECT NO: 552-202104-2035-0661-5
CASE 9040B	Coordinates:Z09V N6726155m E488388.4m	ELEVATION: 716.8m

Master Revised July 2013

Field #	Lab #	Depth	Classification	%H2O	LL	PL	PI	Cc	Cu
● 19	261	0.2 to 1.0	POORLY GRADED SAND(SP)	15.1	NP	NP	NP	1.1	2.4
☒ 21	262	1.0 to 2.0	POORLY GRADED SAND(SP)	8.1	NP	NP	NP	1.0	2.5
▲ 20	263	2.0 to 3.0	POORLY GRADED SAND(SP)	5.7	NP	NP	NP	1.1	2.4

Field #	Lab #	% PASSING														% Breakdown				
		100.0	80.0	50.0	25.0	20.0	12.5	10.0	5.0	2.5	1.25	0.630	0.315	0.160	0.080	Gravel	Sand	Silt	Clay	
● 19	261	100.0	100.0	100.0	100.0	100.0	100.0	100.0	100.0	100.0	100.0	100.0	99.2	35.9	7.4	3.6	0.0	96.4	3.6	
☒ 21	262	100.0	100.0	100.0	100.0	100.0	100.0	100.0	100.0	100.0	100.0	100.0	99.9	98.9	40.5	10.0	4.1	0.0	95.9	4.1
▲ 20	263	100.0	100.0	100.0	100.0	100.0	100.0	100.0	100.0	100.0	100.0	100.0	99.5	34.2	6.4	1.8	0.0	98.2	1.8	

Silt	Sand			Gravel	
	Fine	Medium	Coarse	Fine	Coarse



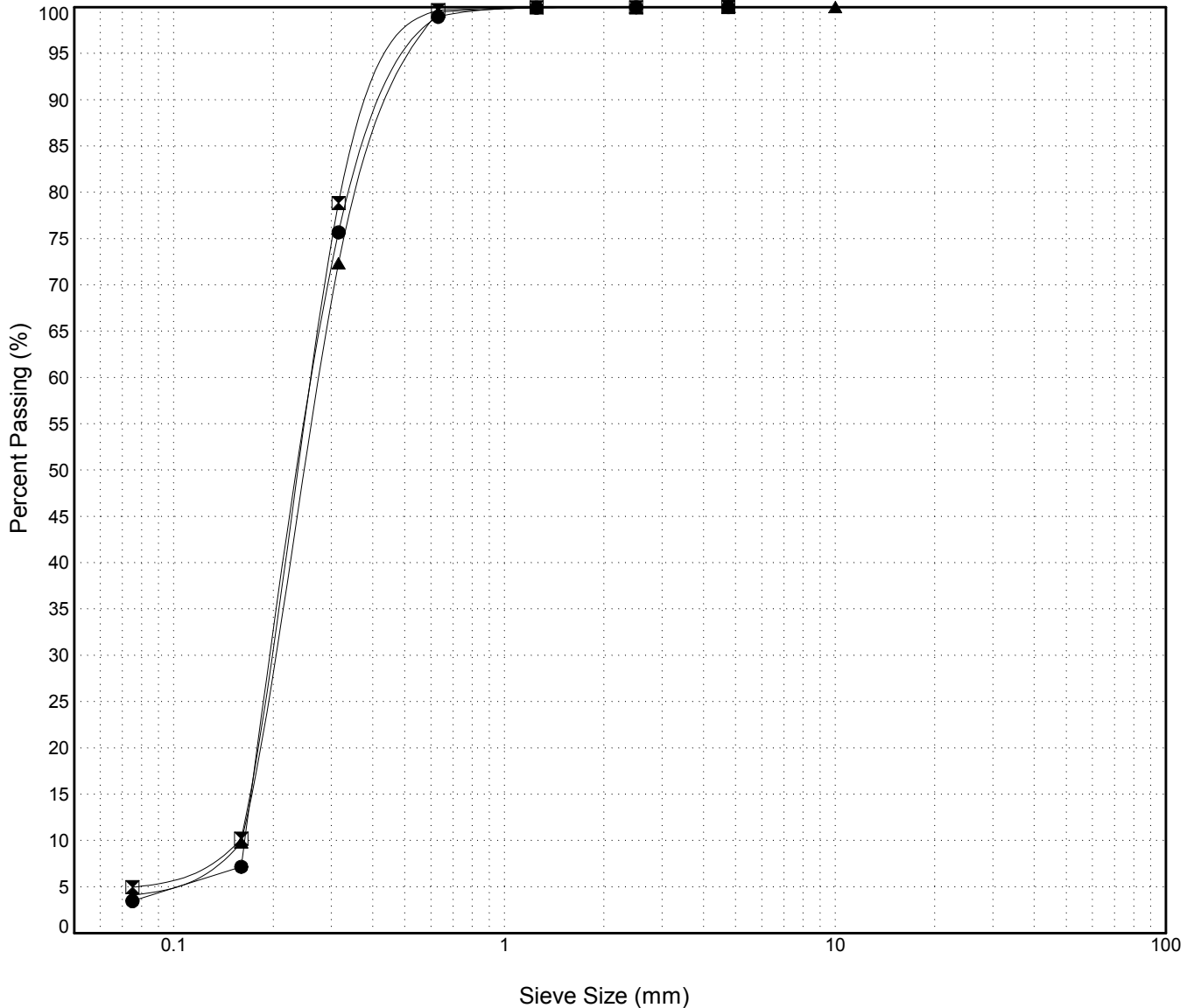
GRAIN SIZE ANALYSIS	Hwy 4 Sand Pit Testing	SOURCE/TP#: 869-5328
	km 81.1 LHS	PROJECT NO: 552-202104-2035-0661-5
CASE 9040B	Coordinates:Z09V N6726197m E488449.8m	ELEVATION: 718.8m

Master Revised July 2013

Field #	Lab #	Depth	Classification	%H2O	LL	PL	PI	Cc	Cu
● 22	264	0.2 to 1.0	POORLY GRADED SAND(SP)	6.4	NP	NP	NP	0.9	1.6
☒ 23	265	1.0 to 2.0	POORLY GRADED SAND(SP)	6.4	NP	NP	NP	0.9	1.7
▲ 24	266	2.0 to 3.0	POORLY GRADED SAND(SP)	6.4	NP	NP	NP	0.9	1.7

Field #	Lab #	% PASSING															% Breakdown						
			100.0	80.0	50.0	25.0	20.0	12.5	10.0	5.0	2.5	1.25	0.630	0.315	0.160	0.080	Gravel	Sand	Silt	Clay			
● 22	264	100.0	100.0	100.0	100.0	100.0	100.0	100.0	100.0	100.0	100.0	100.0	100.0	100.0	100.0	99.0	75.7	7.2	3.5	0.0	96.5	3.5	
☒ 23	265	100.0	100.0	100.0	100.0	100.0	100.0	100.0	100.0	100.0	100.0	100.0	100.0	100.0	100.0	99.7	78.9	10.2	5.0	0.0	95.0	5.0	
▲ 24	266	100.0	100.0	100.0	100.0	100.0	100.0	100.0	100.0	100.0	100.0	100.0	100.0	100.0	100.0	99.9	99.5	72.3	9.8	4.1	0.0	95.9	4.1

Silt	Sand			Gravel	
	Fine	Medium	Coarse	Fine	Coarse



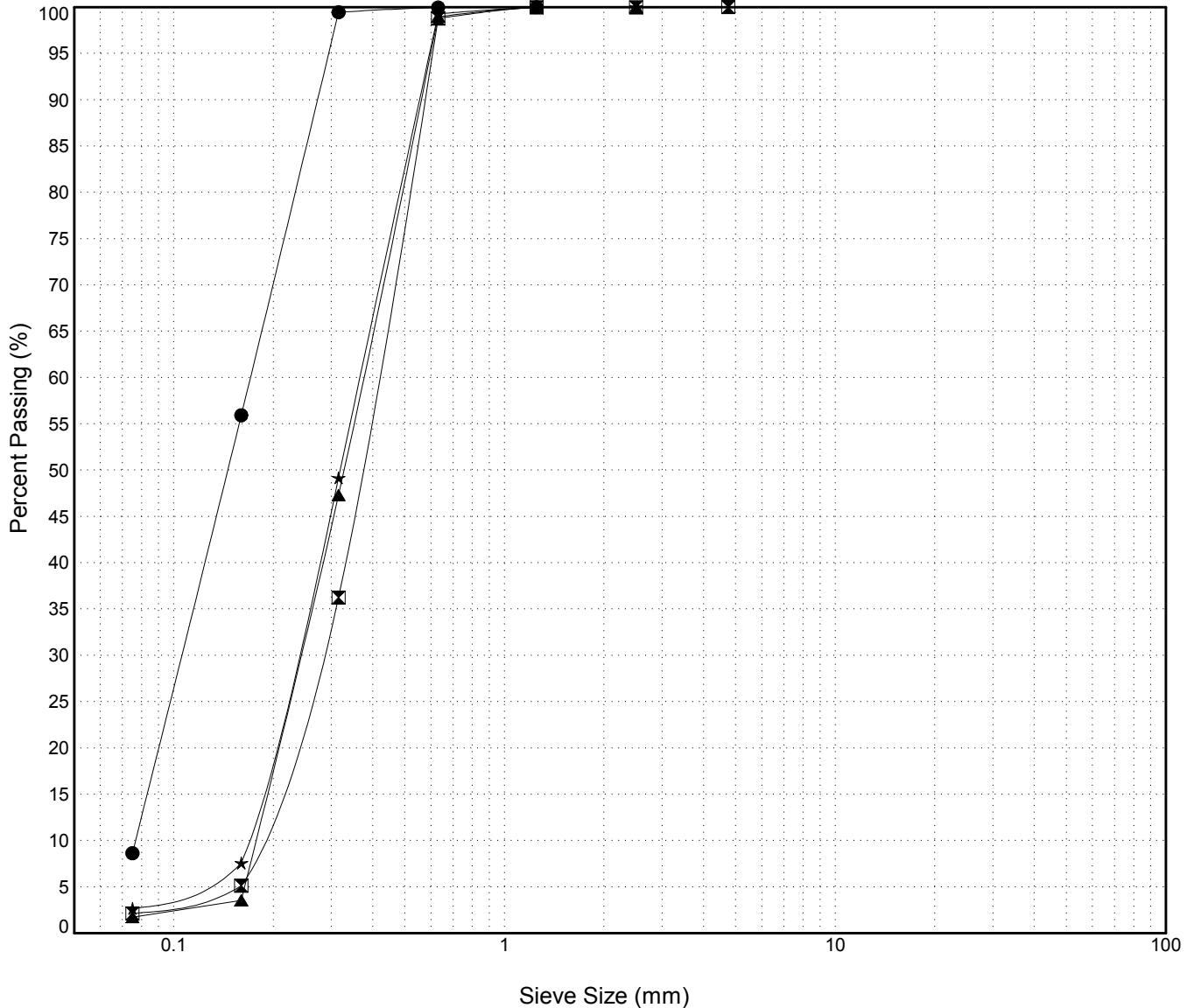
GRAIN SIZE ANALYSIS	Hwy 4 Sand Pit Testing	SOURCE/TP#: 869-5329
	km 81.1 LHS	PROJECT NO: 552-202104-2035-0661-5
CASE 9040B	Coordinates:Z09V N6726190m E488494.9m	ELEVATION: 715.8m

Master Revised July 2013

Field #	Lab #	Depth	Classification	%H2O	LL	PL	PI	Cc	Cu
● 25	267	0.2 to 1.0	POORLY GRADED SAND with SILT(SP-SM)	6.9	NP	NP	NP	0.9	2.2
☒ 26	268	1.0 to 2.0	POORLY GRADED SAND(SP)	5.3	NP	NP	NP	1.0	2.3
▲ 27	269	2.0 to 3.0	POORLY GRADED SAND(SP)	5.4	NP	NP	NP	0.9	2.1
★ 28	270	3.0 to 3.5	POORLY GRADED SAND(SP)	5.3	NP	NP	NP	0.9	2.2

Field #	Lab #	% PASSING														% Breakdown			
		100.0	80.0	50.0	25.0	20.0	12.5	10.0	5.0	2.5	1.25	0.630	0.315	0.160	0.080	Gravel	Sand	Silt	Clay
● 25	267	100.0	100.0	100.0	100.0	100.0	100.0	100.0	100.0	100.0	100.0	100.0	99.5	55.9	8.6	0.0	91.4	8.6	
☒ 26	268	100.0	100.0	100.0	100.0	100.0	100.0	100.0	100.0	100.0	100.0	100.0	98.8	36.2	5.1	0.0	97.9	2.1	
▲ 27	269	100.0	100.0	100.0	100.0	100.0	100.0	100.0	100.0	100.0	100.0	100.0	99.0	47.3	3.5	0.0	98.3	1.7	
★ 28	270	100.0	100.0	100.0	100.0	100.0	100.0	100.0	100.0	100.0	100.0	100.0	99.3	49.2	7.6	0.0	97.3	2.7	

Silt	Sand			Gravel	
	Fine	Medium	Coarse	Fine	Coarse



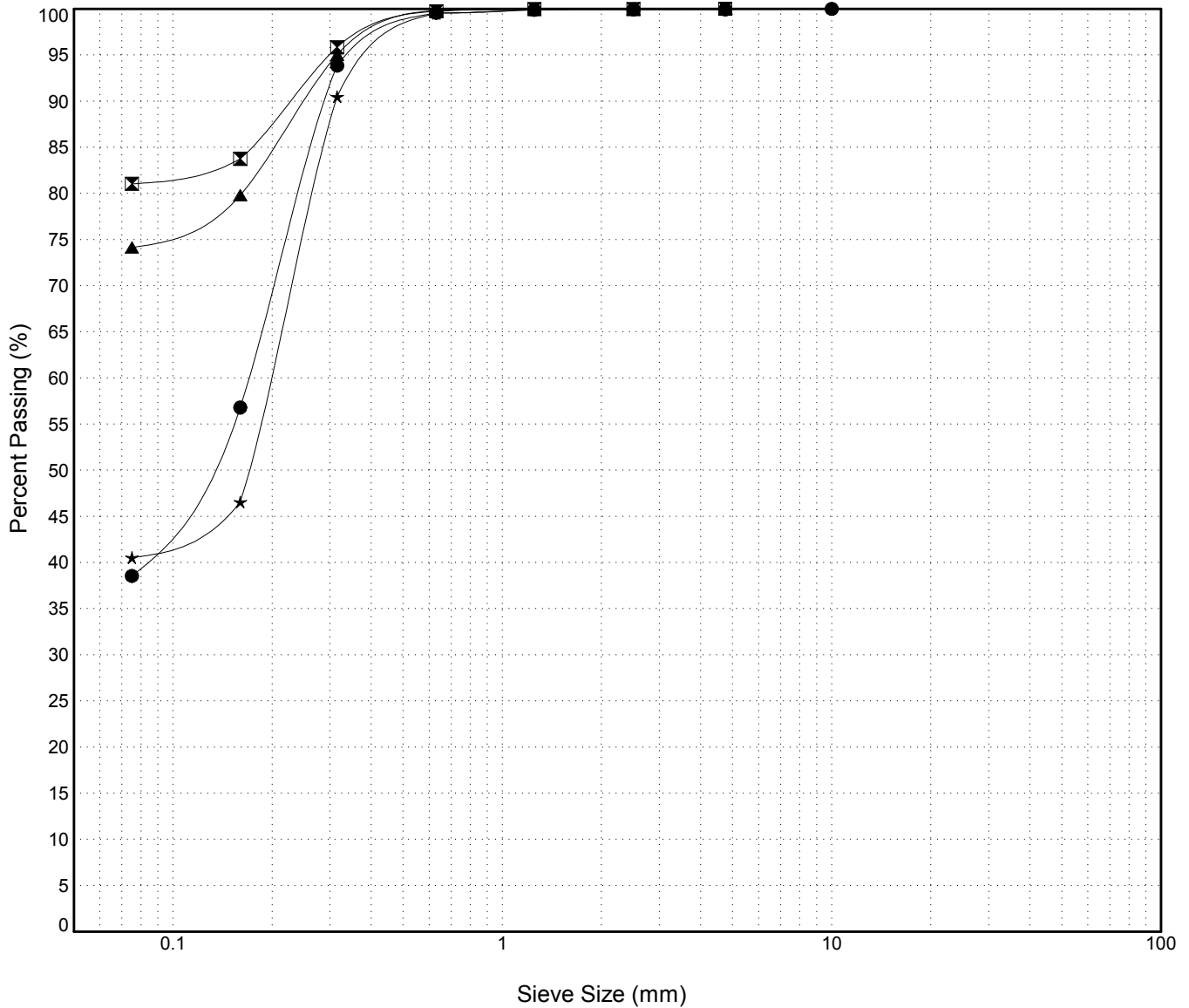
GRAIN SIZE ANALYSIS	Hwy 4 Sand Pit Testing	SOURCE/TP#: 869-5330
	km 81.1 LHS	PROJECT NO: 552-202104-2035-0661-5
CASE 9040B	Coordinates:Z09V N6726240m E488406.7m	ELEVATION: 712.8m

Master Revised July 2013

Field #	Lab #	Depth	Classification	%H2O	LL	PL	PI	Cc	Cu
● 29	271	0.2 to 1.0	SILTY SAND(SM)	13.1	NP	NP	NP		
☒ 30	272	1.0 to 2.0	SILT with SAND(ML)	19.4	NP	NP	NP		
▲ 31	273	2.0 to 3.0	SILT with SAND(ML)	29.3	NP	NP	NP		
★ 32	274	3.0 to 4.0	SILTY SAND(SM)	12.5	NP	NP	NP		

Field #	Lab #	%PASSING															% Breakdown			
			100.0	80.0	50.0	25.0	20.0	12.5	10.0	5.0	2.5	1.25	0.630	0.315	0.160	0.080	Gravel	Sand	Silt	Clay
● 29	271	100.0	100.0	100.0	100.0	100.0	100.0	100.0	100.0	99.9	99.9	99.9	99.6	93.9	56.8	38.6	0.1	61.4	38.6	
☒ 30	272	100.0	100.0	100.0	100.0	100.0	100.0	100.0	100.0	100.0	100.0	100.0	99.7	95.8	83.8	81.0	0.0	19.0	81.0	
▲ 31	273	100.0	100.0	100.0	100.0	100.0	100.0	100.0	100.0	100.0	100.0	99.8	95.0	79.8	74.1		0.0	25.9	74.1	
★ 32	274	100.0	100.0	100.0	100.0	100.0	100.0	100.0	100.0	100.0	99.9	99.5	90.5	46.6	40.5		0.0	59.5	40.5	

Silt	Sand			Gravel	
	Fine	Medium	Coarse	Fine	Coarse



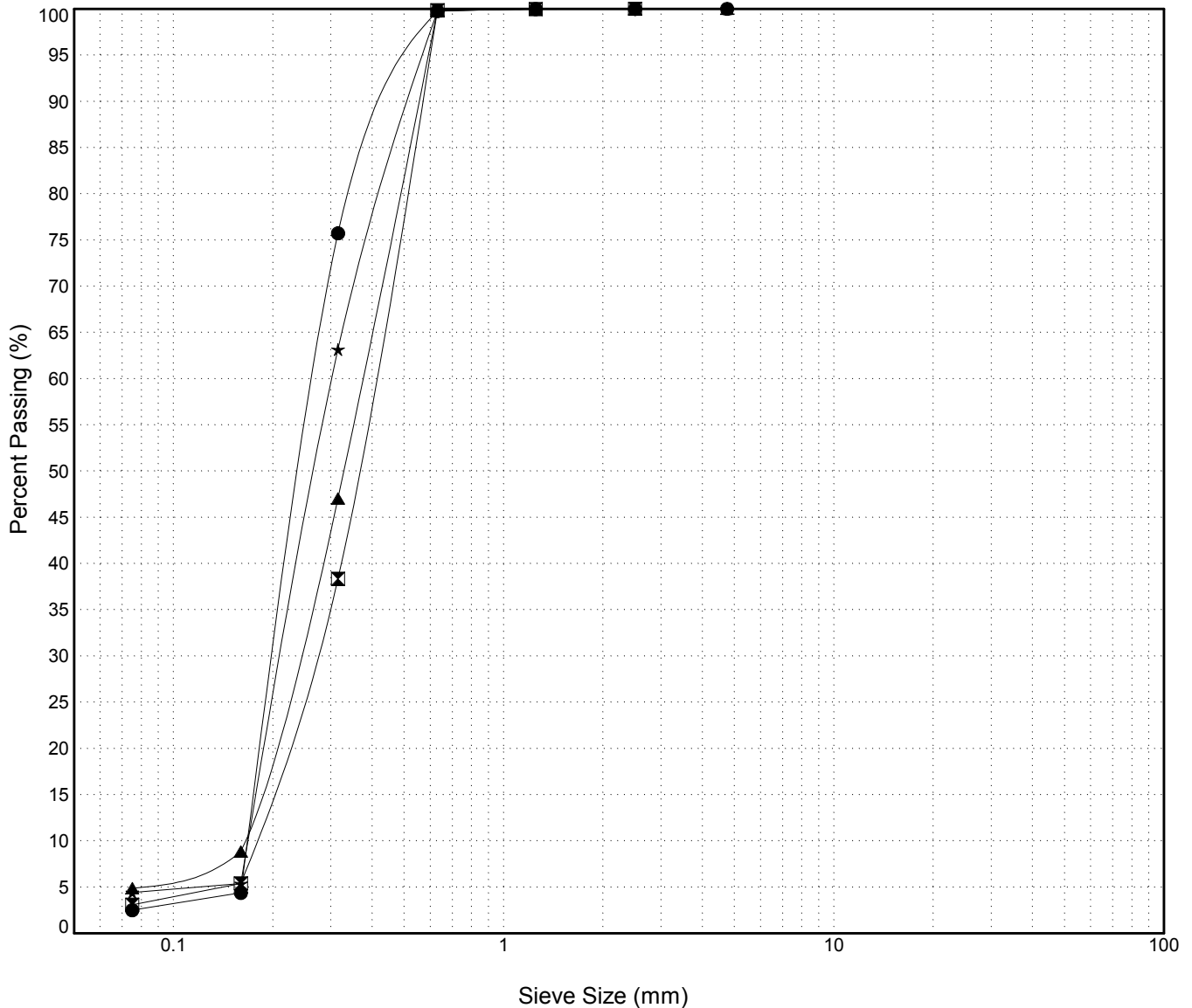
GRAIN SIZE ANALYSIS	Hwy 4 Sand Pit Testing	SOURCE/TP#: 869-5331
	km 81.1 LHS	PROJECT NO: 552-202104-2035-0661-5
CASE 9040B	Coordinates:Z09V N6726299m E488378.6m	ELEVATION: 713.9m

Master Revised July 2013

Field #	Lab #	Depth	Classification	%H2O	LL	PL	PI	Cc	Cu
● 33	275	0.2 to 0.8	POORLY GRADED SAND(SP)	4.8	NP	NP	NP	0.9	1.6
☒ 34	276	0.8 to 1.5	POORLY GRADED SAND(SP)	4.0	NP	NP	NP	1.0	2.3
▲ 35	277	1.5 to 2.2	POORLY GRADED SAND(SP)	4.8	NP	NP	NP	0.9	2.3
★ 36	278	2.2 to 3.0	POORLY GRADED SAND(SP)	4.8	NP	NP	NP	0.9	1.8

Field #	Lab #	% PASSING														% Breakdown			
		100.0	80.0	50.0	25.0	20.0	12.5	10.0	5.0	2.5	1.25	0.630	0.315	0.160	0.080	Gravel	Sand	Silt	Clay
● 33	275	100.0	100.0	100.0	100.0	100.0	100.0	100.0	100.0	100.0	100.0	100.0	99.8	75.7	4.4	2.5	0.0	97.5	2.5
☒ 34	276	100.0	100.0	100.0	100.0	100.0	100.0	100.0	100.0	100.0	100.0	100.0	99.8	38.3	5.4	3.1	0.0	96.9	3.1
▲ 35	277	100.0	100.0	100.0	100.0	100.0	100.0	100.0	100.0	100.0	100.0	100.0	99.9	47.0	8.9	4.9	0.0	95.1	4.9
★ 36	278	100.0	100.0	100.0	100.0	100.0	100.0	100.0	100.0	100.0	100.0	100.0	99.7	63.2	5.4	4.4	0.0	95.6	4.4

Silt	Sand			Gravel	
	Fine	Medium	Coarse	Fine	Coarse



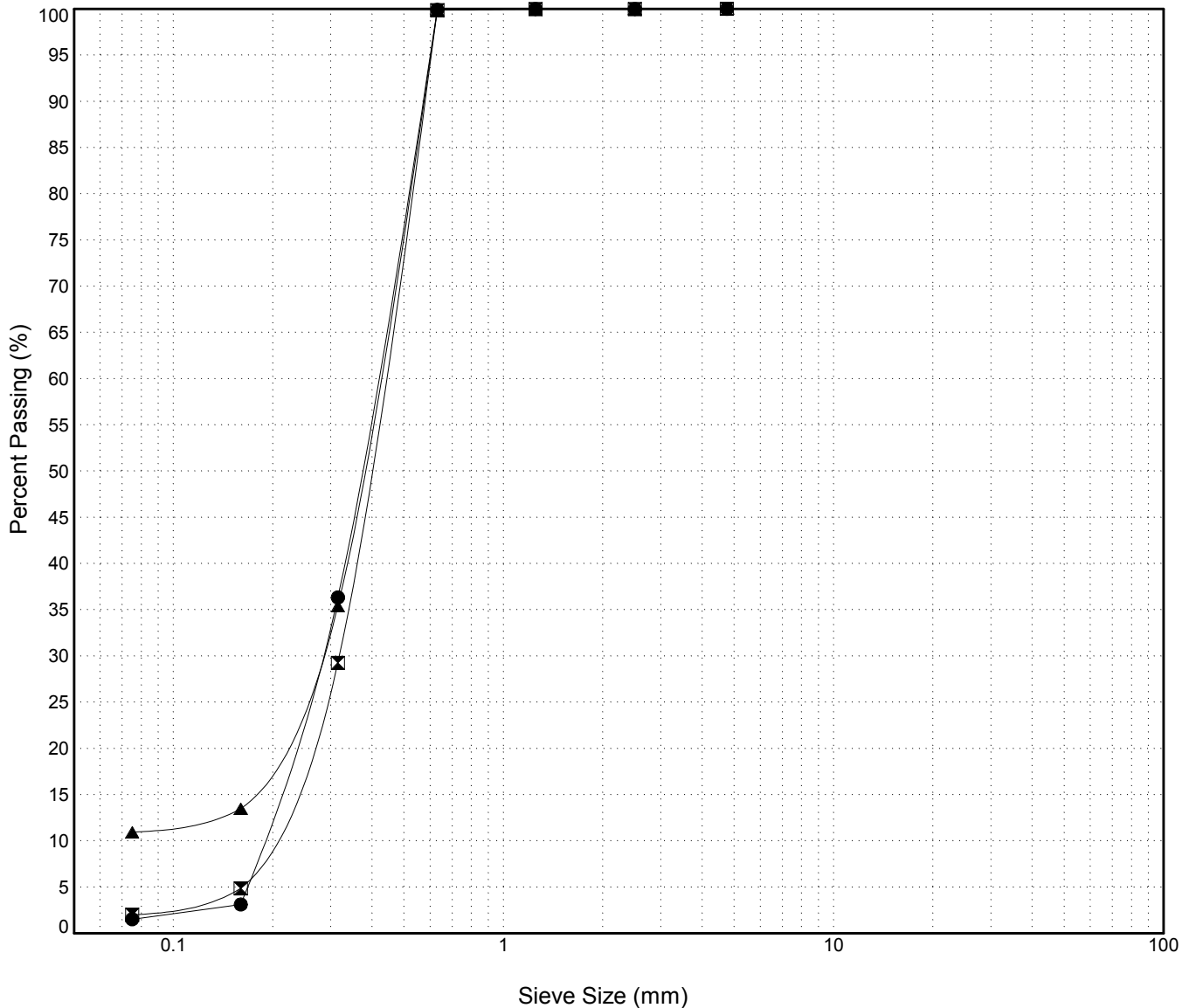
GRAIN SIZE ANALYSIS	Hwy 4 Sand Pit Testing	SOURCE/TP#: 869-5332
	km 81.1 LHS	PROJECT NO: 552-202104-2035-0661-5
CASE 9040B	Coordinates:Z09V N6726337m E488453.9m	ELEVATION: 720.8m

Master Revised July 2013

Field #	Lab #	Depth	Classification	%H2O	LL	PL	PI	Cc	Cu
● 37	279	0.2 to 1.0	POORLY GRADED SAND(SP)	6.1	NP	NP	NP	1.0	2.2
☒ 38	280	1.0 to 2.0	POORLY GRADED SAND(SP)	5.7	NP	NP	NP	1.3	2.3
▲ 39	281	2.0 to 3.0	POORLY GRADED SAND with SILT(SP-SM)	5.9	NP	NP	NP	3.1	7.2

Field #	Lab #	% PASSING														% Breakdown						
			100.0	80.0	50.0	25.0	20.0	12.5	10.0	5.0	2.5	1.25	0.630	0.315	0.160	0.080	Gravel	Sand	Silt	Clay		
● 37	279	100.0	100.0	100.0	100.0	100.0	100.0	100.0	100.0	100.0	100.0	100.0	100.0	100.0	100.0	99.9	36.3	3.1	1.5	0.0	98.5	1.5
☒ 38	280	100.0	100.0	100.0	100.0	100.0	100.0	100.0	100.0	100.0	100.0	100.0	100.0	100.0	100.0	99.9	29.3	4.9	2.0	0.0	98.0	2.0
▲ 39	281	100.0	100.0	100.0	100.0	100.0	100.0	100.0	100.0	100.0	100.0	100.0	100.0	100.0	100.0	99.9	35.4	13.5	10.9	0.0	89.1	10.9

Silt	Sand			Gravel	
	Fine	Medium	Coarse	Fine	Coarse

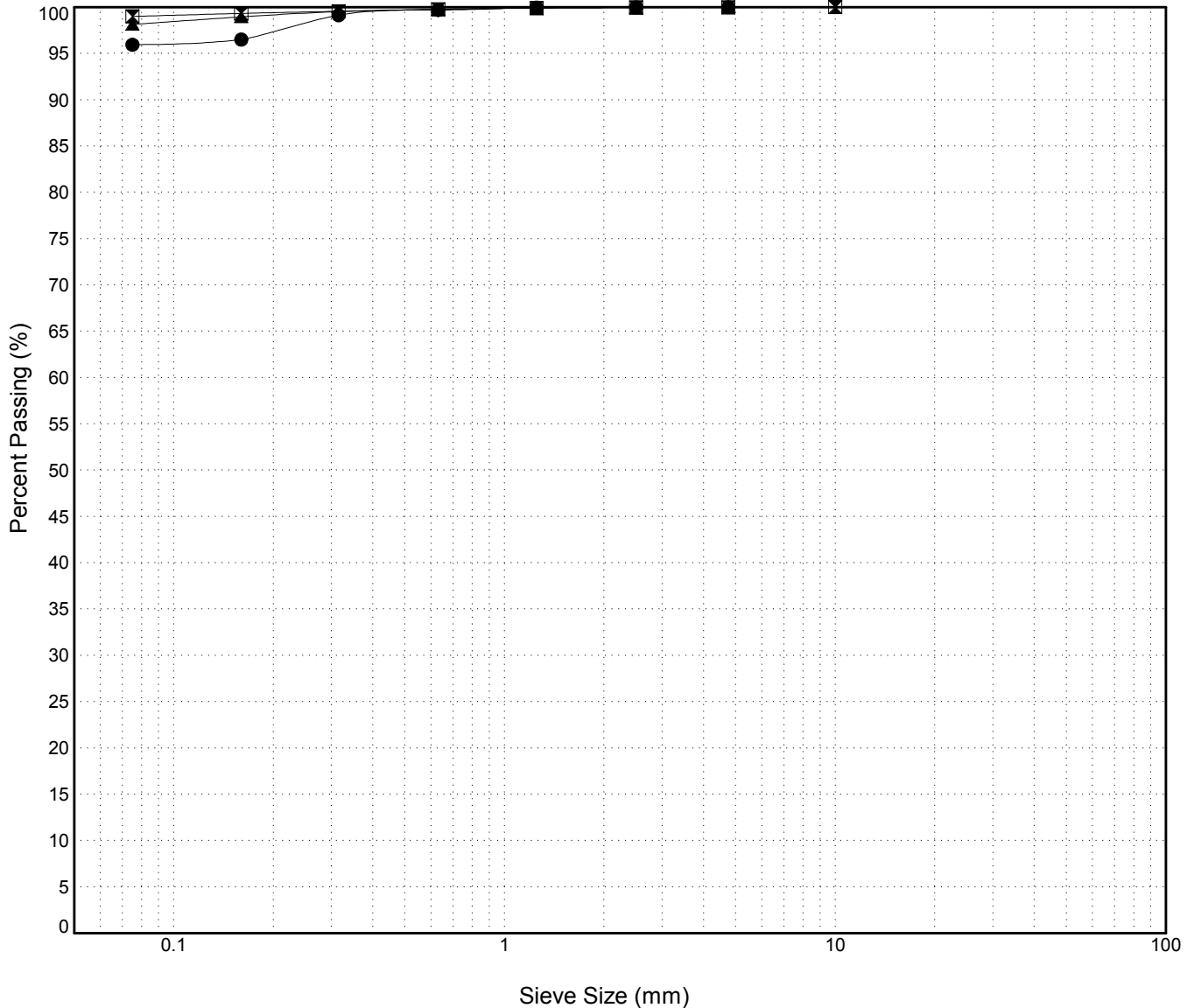


GRAIN SIZE ANALYSIS	Hwy 4 Sand Pit Testing	SOURCE/TP#: 869-5333
	km 81.1 LHS	PROJECT NO: 552-202104-2035-0661-5
CASE 9040B	Coordinates:Z09V N6726399m E488546.7m	ELEVATION: 718.4m

Master Revised July 2013

Field #	Lab #	Depth	Classification	%H2O	LL	PL	PI	Cc	Cu											
● 40	282	0.2 to 1.0	SILT(ML)	28.5	NP	NP	NP													
☒ 41	283	1.0 to 2.5	SILT(ML)	38.5	NP	NP	NP													
▲ 42	284	2.5 to 3.5	SILT(ML)	37.8	NP	NP	NP													
Field #	Lab #	100.0	80.0	50.0	25.0	20.0	12.5	10.0	5.0	2.5	1.25	0.630	0.315	0.160	0.080	% Breakdown				
● 40	282	100.0	100.0	100.0	100.0	100.0	100.0	100.0	100.0	100.0	99.9	99.7	99.1	96.5	95.9	Gravel	Sand	Silt	Clay	
☒ 41	283	100.0	100.0	100.0	100.0	100.0	100.0	100.0	100.0	100.0	99.9	99.8	99.6	99.3	99.0	0.0	4.1	95.9		
▲ 42	284	100.0	100.0	100.0	100.0	100.0	100.0	100.0	100.0	100.0	99.9	99.7	99.5	99.0	98.1	0.0	1.9	98.1		

Silt	Sand			Gravel	
	Fine	Medium	Coarse	Fine	Coarse



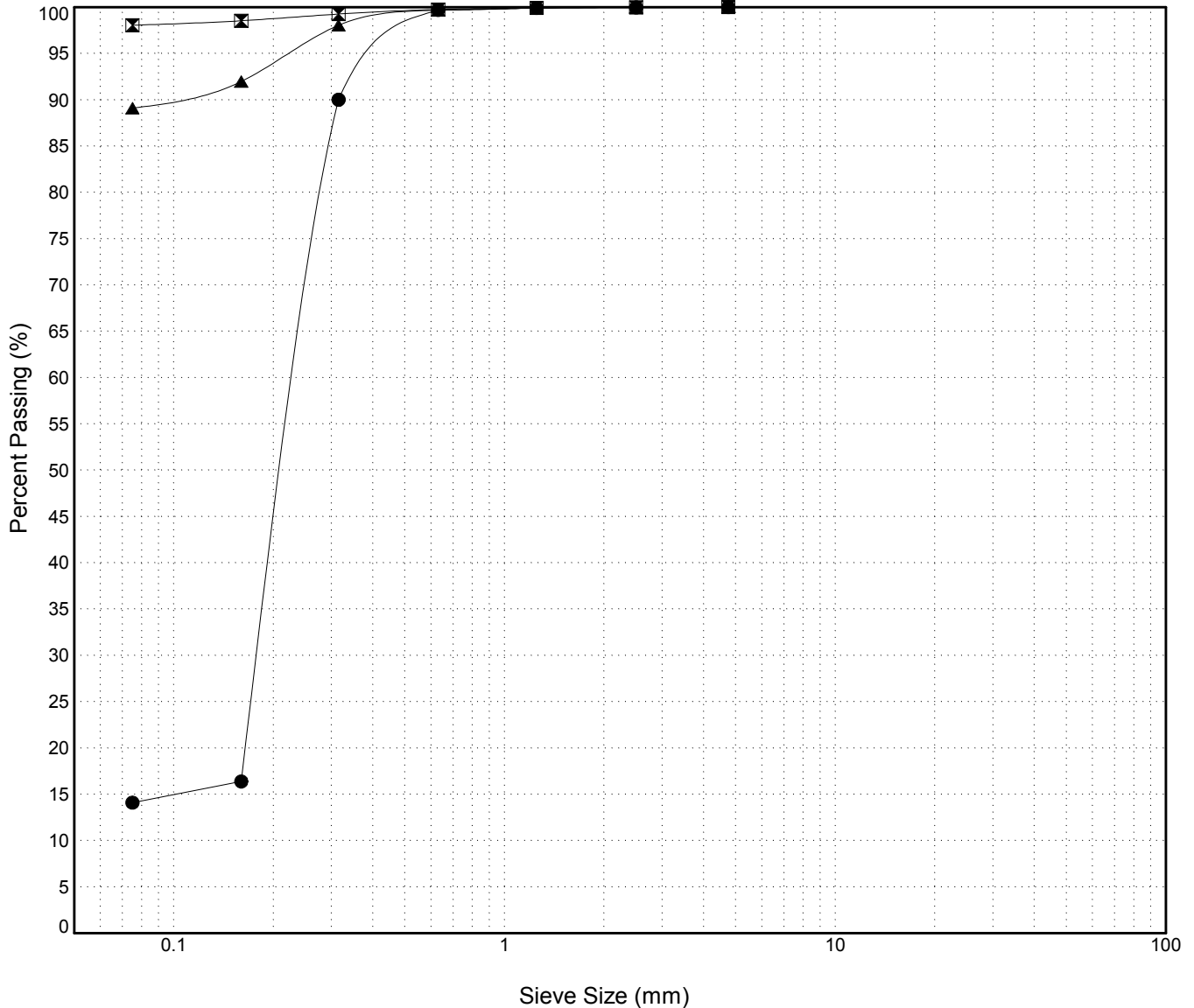
GRAIN SIZE ANALYSIS	Hwy 4 Sand Pit Testing	SOURCE/TP#: 869-5334
	km 81.1 LHS	PROJECT NO: 552-202104-2035-0661-5
CASE 9040B	Coordinates:Z09V N6726723m E488418.5m	ELEVATION: 719.4m

Master Revised July 2013

Field #	Lab #	Depth	Classification	%H2O	LL	PL	PI	Cc	Cu
● 43	285	0.2 to 1.0	SILTY SAND(SM)	9.3	NP	NP	NP		
☒ 44	286	1.0 to 2.0	SILT(ML)	41.7	NP	NP	NP		
▲ 45	286	2.0 to 4.0	SILT(ML)	36.3	NP	NP	NP		

Field #	Lab #	% PASSING															% Breakdown					
			100.0	80.0	50.0	25.0	20.0	12.5	10.0	5.0	2.5	1.25	0.630	0.315	0.160	0.080	Gravel	Sand	Silt	Clay		
● 43	285	100.0	100.0	100.0	100.0	100.0	100.0	100.0	100.0	100.0	100.0	100.0	100.0	100.0	100.0	100.0	100.0	16.4	14.1	0.0	85.9	14.1
☒ 44	286	100.0	100.0	100.0	100.0	100.0	100.0	100.0	100.0	100.0	100.0	100.0	100.0	100.0	100.0	100.0	100.0	98.5	98.1	0.0	1.9	98.1
▲ 45	286	100.0	100.0	100.0	100.0	100.0	100.0	100.0	100.0	100.0	100.0	100.0	100.0	100.0	100.0	100.0	100.0	92.0	89.1	0.0	10.9	89.1

Silt	Sand			Gravel	
	Fine	Medium	Coarse	Fine	Coarse



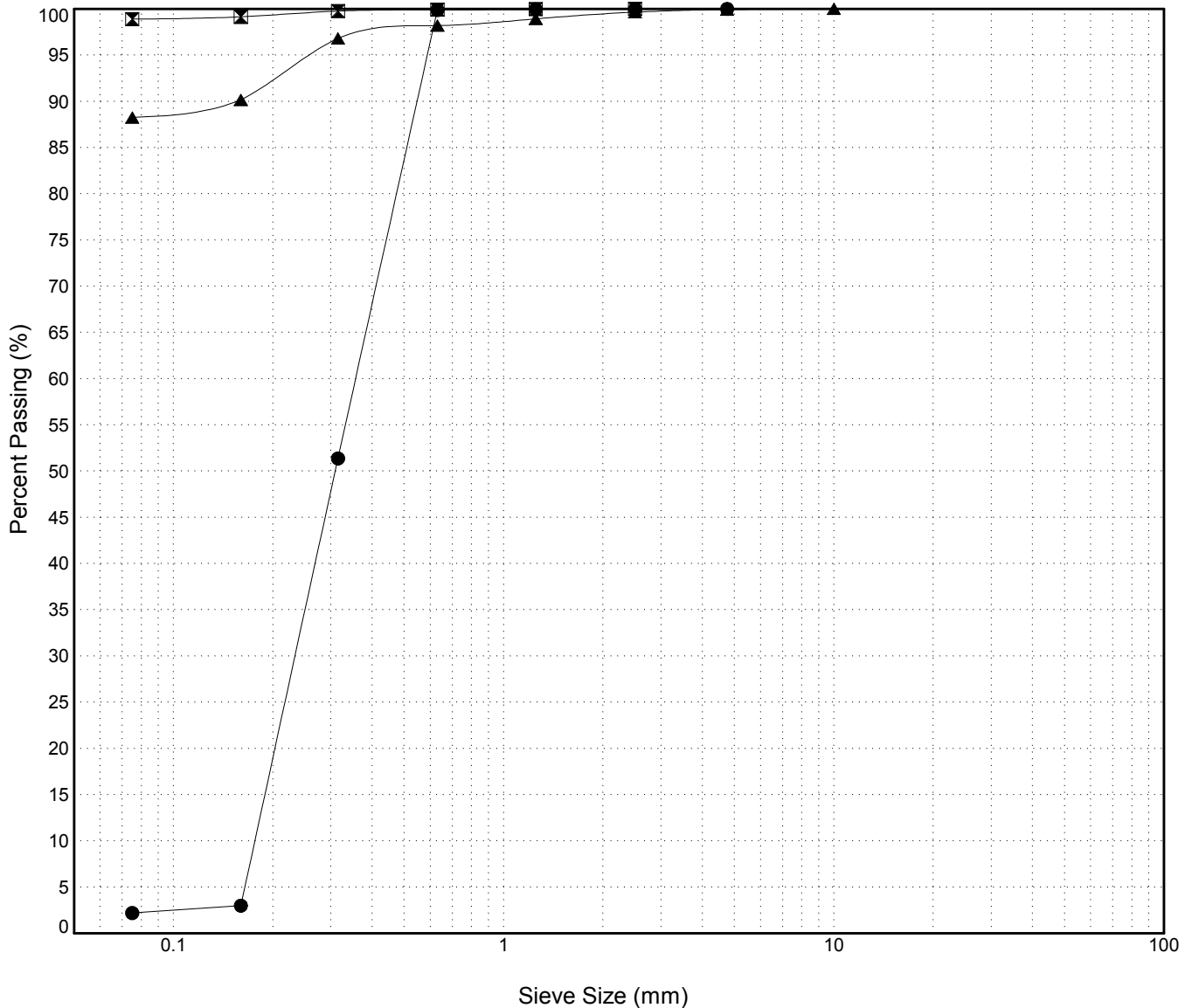
GRAIN SIZE ANALYSIS	Hwy 4 Sand Pit Testing	SOURCE/TP#: 869-5335
	km 81.1 LHS	PROJECT NO: 552-202104-2035-0661-5
CASE 9040B	Coordinates:Z09V N6726757m E488497.7m	ELEVATION: 725m

Master Revised July 2013

Field #	Lab #	Depth	Classification	%H2O	LL	PL	PI	Cc	Cu
● 46		0.2 to 1.0	POORLY GRADED SAND(SP)	8.3	NP	NP	NP	0.9	2.0
☒ 47		1.0 to 2.0	SILT(ML)	42.4	NP	NP	NP		
▲ 48		2.0 to 4.0	SILT(ML)	36.8	NP	NP	NP		

Field #	Lab #	% PASSING	Sieve Size (mm)													% Breakdown						
			100.0	80.0	50.0	25.0	20.0	12.5	10.0	5.0	2.5	1.25	0.630	0.315	0.160	0.080	Gravel	Sand	Silt	Clay		
● 46		100.0	100.0	100.0	100.0	100.0	100.0	100.0	100.0	100.0	100.0	100.0	100.0	100.0	100.0	99.9	51.4	3.0	2.2	0.0	97.8	2.2
☒ 47		100.0	100.0	100.0	100.0	100.0	100.0	100.0	100.0	100.0	100.0	100.0	100.0	100.0	100.0	99.9	99.8	99.2	98.9	0.0	1.1	98.9
▲ 48		100.0	100.0	100.0	100.0	100.0	100.0	100.0	99.9	99.6	98.9	98.2	96.8	90.2	88.3	0.1	11.7			0.1	11.7	88.3

Silt	Sand			Gravel	
	Fine	Medium	Coarse	Fine	Coarse



SUBSURFACE EXPLORATION AND TEST REPORT	4	SOURCE/TP#: 869-5322
	Hwy 4 Sand Pit Testing, km 81.1 LHS	PROJECT NO: 552-202104-2035-0661-5
CASE 9040B	Coordinates: Z09V N6726087m E488642.1m	ELEVATION: 730.4m

PHOTOS



Figure 869-5322.1
Photo of Sample pile from 0.2m to 1.0m below ground level, from Test Pit 5322



Figure 869-5322.2
Photo of Sample pile from 1.0m to 2.0m below ground level, from Test Pit 5322

SUBSURFACE EXPLORATION AND TEST REPORT	4	SOURCE/TP#: 869-5322
	Hwy 4 Sand Pit Testing, km 81.1 LHS	PROJECT NO: 552-202104-2035-0661-5
CASE 9040B	Coordinates: Z09V N6726087m E488642.1m	ELEVATION: 730.4m

PHOTOS



Figure 869-5322.3
Photo of Sample pile from 2.0m to 3.0m below ground level, from Test Pit 5322



Figure 869-5322.4
Photo of Sample pile from 3.0m to 4.0m below ground level, from Test Pit 5322

SUBSURFACE EXPLORATION AND TEST REPORT	4	SOURCE/TP#: 869-5322
	Hwy 4 Sand Pit Testing, km 81.1 LHS	PROJECT NO: 552-202104-2035-0661-5
CASE 9040B	Coordinates: Z09V N6726087m E488642.1m	ELEVATION: 730.4m

PHOTOS



Figure 869-5322.5
Photo of Test Pit 5322

SUBSURFACE EXPLORATION AND TEST REPORT	4	SOURCE/TP#: 869-5323
	Hwy 4 Sand Pit Testing, km 81.1 LHS	PROJECT NO: 552-202104-2035-0661-5
CASE 9040B	Coordinates: Z09V N6726019m E488619.1m	ELEVATION: 723.7m

PHOTOS



Figure 869-5323.1
Photo of Sample pile from 0.3m to 1.0m below ground level, from Test Pit 5323



Figure 869-5323.2
Photo of Sample pile from 1.0m to 2.0m below ground level, from Test Pit 5323

SUBSURFACE EXPLORATION AND TEST REPORT	4	SOURCE/TP#: 869-5323
	Hwy 4 Sand Pit Testing, km 81.1 LHS	PROJECT NO: 552-202104-2035-0661-5
CASE 9040B	Coordinates: Z09V N6726019m E488619.1m	ELEVATION: 723.7m

PHOTOS



Figure 869-5323.3
Photo of Sample pile from 3.0m to 4.0m below ground level, from Test Pit 5323



Figure 869-5323.4
Photo of Test Pit 5323

SUBSURFACE EXPLORATION AND TEST REPORT	4	SOURCE/TP#: 869-5324
	Hwy 4 Sand Pit Testing, km 81.1 LHS	PROJECT NO: 552-202104-2035-0661-5
CASE 9040B	Coordinates: Z09V N6726042m E488582m	ELEVATION: 718.4m

PHOTOS



Figure 869-5324.1
Photo of Sample pile from 0.2m to 1.0m below ground level, from Test Pit 5324



Figure 869-5324.2
Photo of Sample pile from 1.0m to 2.0m below ground level, from Test Pit 5324

SUBSURFACE EXPLORATION AND TEST REPORT	4	SOURCE/TP#: 869-5324
	Hwy 4 Sand Pit Testing, km 81.1 LHS	PROJECT NO: 552-202104-2035-0661-5
CASE 9040B	Coordinates: Z09V N6726042m E488582m	ELEVATION: 718.4m

PHOTOS



Figure 869-5324.3
Photo of Sample pile from 3.0m to 4.0m below ground level, from Test Pit 5324



Figure 869-5324.4
Photo of Test Pit 5324

SUBSURFACE EXPLORATION AND TEST REPORT	4	SOURCE/TP#: 869-5326
	Hwy 4 Sand Pit Testing, km 81.1 LHS	PROJECT NO: 552-202104-2035-0661-5
CASE 9040B	Coordinates: Z09V N6726102m E488406.5m	ELEVATION: 715.1m

PHOTOS



Figure 869-5326.1
Photo of Sample pile from 0.2m to 1.0m below ground level, from Test Pit 5326



Figure 869-5326.2
Photo of Sample pile from 1.0m to 2.0m below ground level, from Test Pit 5326

SUBSURFACE EXPLORATION AND TEST REPORT	4	SOURCE/TP#: 869-5326
	Hwy 4 Sand Pit Testing, km 81.1 LHS	PROJECT NO: 552-202104-2035-0661-5
CASE 9040B	Coordinates: Z09V N6726102m E488406.5m	ELEVATION: 715.1m

PHOTOS



Figure 869-5326.3
Photo of Sample pile from 2.0m to 3.0m below ground level, from Test Pit 5326



Figure 869-5326.4
Photo of Sample pile from 3.0m to 4.0m below ground level, from Test Pit 5326

SUBSURFACE EXPLORATION AND TEST REPORT	4	SOURCE/TP#: 869-5327
	Hwy 4 Sand Pit Testing, km 81.1 LHS	PROJECT NO: 552-202104-2035-0661-5
CASE 9040B	Coordinates: Z09V N6726155m E488388.4m	ELEVATION: 716.8m

PHOTOS



Figure 869-5327.1
Photo of Sample pile from 0.2m to 1.0m below ground level, from Test Pit 5327



Figure 869-5327.2
Photo of Sample pile from 1.0m to 2.0m below ground level, from Test Pit 5327

SUBSURFACE EXPLORATION AND TEST REPORT	4	SOURCE/TP#: 869-5327
	Hwy 4 Sand Pit Testing, km 81.1 LHS	PROJECT NO: 552-202104-2035-0661-5
CASE 9040B	Coordinates: Z09V N6726155m E488388.4m	ELEVATION: 716.8m

PHOTOS



Figure 869-5327.3
Photo of Sample pile from 2.0m to 3.0m below ground level, from Test Pit 5327



Figure 869-5327.4
Photo of Test Pit 5327

SUBSURFACE EXPLORATION AND TEST REPORT	4	SOURCE/TP#: 869-5328
	Hwy 4 Sand Pit Testing, km 81.1 LHS	PROJECT NO: 552-202104-2035-0661-5
CASE 9040B	Coordinates: Z09V N6726197m E488449.8m	ELEVATION: 718.8m

PHOTOS



Figure 869-5328.1
Photo of Sample pile from 0.2m to 1.0m below ground level, from Test Pit 5328



Figure 869-5328.2
Photo of Sample pile from 1.0m to 2.0m below ground level, from Test Pit 5328

SUBSURFACE EXPLORATION AND TEST REPORT	4	SOURCE/TP#: 869-5328
	Hwy 4 Sand Pit Testing, km 81.1 LHS	PROJECT NO: 552-202104-2035-0661-5
CASE 9040B	Coordinates: Z09V N6726197m E488449.8m	ELEVATION: 718.8m

PHOTOS



Figure 869-5328.3
Photo of Sample pile from 2.0m to 3.0m below ground level, from Test Pit 5328



Figure 869-5328.4
Photo of Test Pit 5328

SUBSURFACE EXPLORATION AND TEST REPORT	4	SOURCE/TP#: 869-5329
	Hwy 4 Sand Pit Testing, km 81.1 LHS	PROJECT NO: 552-202104-2035-0661-5
CASE 9040B	Coordinates: Z09V N6726190m E488494.9m	ELEVATION: 715.8m

PHOTOS



Figure 869-5329.1
Photo of Sample pile from 0.2m to 1.0m below ground level, from Test Pit 5329



Figure 869-5329.2
Photo of Sample pile from 1.0m to 2.0m below ground level, from Test Pit 5329

SUBSURFACE EXPLORATION AND TEST REPORT	4	SOURCE/TP#: 869-5329
	Hwy 4 Sand Pit Testing, km 81.1 LHS	PROJECT NO: 552-202104-2035-0661-5
CASE 9040B	Coordinates: Z09V N6726190m E488494.9m	ELEVATION: 715.8m

PHOTOS



Figure 869-5329.3
Photo of Sample pile from 2.0m to 3.0m below ground level, from Test Pit 5329



Figure 869-5329.4
Photo of Test Pit 5329

SUBSURFACE EXPLORATION AND TEST REPORT	4	SOURCE/TP#: 869-5330
	Hwy 4 Sand Pit Testing, km 81.1 LHS	PROJECT NO: 552-202104-2035-0661-5
CASE 9040B	Coordinates: Z09V N6726240m E488406.7m	ELEVATION: 712.8m

PHOTOS



Figure 869-5330.1
Photo of Sample pile from 0.2m to 1.0m below ground level, from Test Pit 5330



Figure 869-5330.2
Photo of Sample pile from 1.0m to 2.0m below ground level, from Test Pit 5330

SUBSURFACE EXPLORATION AND TEST REPORT	4	SOURCE/TP#: 869-5330
	Hwy 4 Sand Pit Testing, km 81.1 LHS	PROJECT NO: 552-202104-2035-0661-5
CASE 9040B	Coordinates: Z09V N6726240m E488406.7m	ELEVATION: 712.8m

PHOTOS



Figure 869-5330.3
Photo of Sample pile from 2.0m to 3.0m below ground level, from Test Pit 5330



Figure 869-5330.4
Photo of Test Pit 5330

SUBSURFACE EXPLORATION AND TEST REPORT	4	SOURCE/TP#: 869-5331
	Hwy 4 Sand Pit Testing, km 81.1 LHS	PROJECT NO: 552-202104-2035-0661-5
CASE 9040B	Coordinates: Z09V N6726299m E488378.6m	ELEVATION: 713.9m

PHOTOS



Figure 869-5331.1
Photo of Sample pile from 0.2m to 0.8m below ground level, from Test Pit 5331



Figure 869-5331.2
Photo of Sample pile from 0.8m to 1.5m below ground level, from Test Pit 5331

SUBSURFACE EXPLORATION AND TEST REPORT	4	SOURCE/TP#: 869-5331
	Hwy 4 Sand Pit Testing, km 81.1 LHS	PROJECT NO: 552-202104-2035-0661-5
CASE 9040B	Coordinates: Z09V N6726299m E488378.6m	ELEVATION: 713.9m

PHOTOS



Figure 869-5331.3
Photo of Sample pile from 1.5m to 2.2m below ground level, from Test Pit 5331



Figure 869-5331.4
Photo of Sample pile from 2.2m to 3.0m below ground level, from Test Pit 5331

SUBSURFACE EXPLORATION AND TEST REPORT	4	SOURCE/TP#: 869-5331
	Hwy 4 Sand Pit Testing, km 81.1 LHS	PROJECT NO: 552-202104-2035-0661-5
CASE 9040B	Coordinates: Z09V N6726299m E488378.6m	ELEVATION: 713.9m

PHOTOS



Figure 869-5331.5
Photo of Test Pit 5331

SUBSURFACE EXPLORATION AND TEST REPORT	4	SOURCE/TP#: 869-5332
	Hwy 4 Sand Pit Testing, km 81.1 LHS	PROJECT NO: 552-202104-2035-0661-5
CASE 9040B	Coordinates: Z09V N6726337m E488453.9m	ELEVATION: 720.8m

PHOTOS



Figure 869-5332.1
Photo of Sample pile from 0.2m to 1.0m below ground level, from Test Pit 5332



Figure 869-5332.2
Photo of Sample pile from 1.0m to 2.0m below ground level, from Test Pit 5332

SUBSURFACE EXPLORATION AND TEST REPORT	4	SOURCE/TP#: 869-5332
	Hwy 4 Sand Pit Testing, km 81.1 LHS	PROJECT NO: 552-202104-2035-0661-5
CASE 9040B	Coordinates: Z09V N6726337m E488453.9m	ELEVATION: 720.8m

PHOTOS



Figure 869-5332.3
Photo of Sample pile from 2.0m to 3.0m below ground level, from Test Pit 5332



Figure 869-5332.4
Photo of Test Pit 5332

SUBSURFACE EXPLORATION AND TEST REPORT	4	SOURCE/TP#: 869-5333
	Hwy 4 Sand Pit Testing, km 81.1 LHS	PROJECT NO: 552-202104-2035-0661-5
CASE 9040B	Coordinates: Z09V N6726399m E488546.7m	ELEVATION: 718.4m

PHOTOS



Figure 869-5333.1
Photo of Sample pile from 0.2m to 1.0m below ground level, from Test Pit 5333



Figure 869-5333.2
Photo of Sample pile from 1.0m to 2.5m below ground level, from Test Pit 5333

SUBSURFACE EXPLORATION AND TEST REPORT	4	SOURCE/TP#: 869-5333
	Hwy 4 Sand Pit Testing, km 81.1 LHS	PROJECT NO: 552-202104-2035-0661-5
CASE 9040B	Coordinates: Z09V N6726399m E488546.7m	ELEVATION: 718.4m

PHOTOS



Figure 869-5333.3
Photo of Sample pile from 2.5m to 3.5m below ground level, from Test Pit 5333



Figure 869-5333.4
Photo of Test Pit 5333

SUBSURFACE EXPLORATION AND TEST REPORT	4	SOURCE/TP#: 869-5334
	Hwy 4 Sand Pit Testing, km 81.1 LHS	PROJECT NO: 552-202104-2035-0661-5
CASE 9040B	Coordinates: Z09V N6726723m E488418.5m	ELEVATION: 719.4m

PHOTOS



Figure 869-5334.1
Photo of Sample pile from 0.2m to 1.0m below ground level, from Test Pit 5334



Figure 869-5334.2
Photo of Sample pile from 1.0m to 2.0m below ground level, from Test Pit 5334

SUBSURFACE EXPLORATION AND TEST REPORT	4	SOURCE/TP#: 869-5334
	Hwy 4 Sand Pit Testing, km 81.1 LHS	PROJECT NO: 552-202104-2035-0661-5
CASE 9040B	Coordinates: Z09V N6726723m E488418.5m	ELEVATION: 719.4m

PHOTOS



Figure 869-5334.3
Photo of Sample pile from 2.0m to 4.0m below ground level, from Test Pit 5334



Figure 869-5334.4
Photo of Test Pit 5334

SUBSURFACE EXPLORATION AND TEST REPORT	4	SOURCE/TP#: 869-5335
	Hwy 4 Sand Pit Testing, km 81.1 LHS	PROJECT NO: 552-202104-2035-0661-5
CASE 9040B	Coordinates: Z09V N6726757m E488497.7m	ELEVATION: 725m

PHOTOS



Figure 869-5335.1
Photo of Sample pile from 0.2m to 1.0m below ground level, from Test Pit 5335



Figure 869-5335.2
Photo of Sample pile from 1.0m to 2.0m below ground level, from Test Pit 5335

SUBSURFACE EXPLORATION AND TEST REPORT	4	SOURCE/TP#: 869-5335
	Hwy 4 Sand Pit Testing, km 81.1 LHS	PROJECT NO: 552-202104-2035-0661-5
CASE 9040B	Coordinates: Z09V N6726757m E488497.7m	ELEVATION: 725m

PHOTOS



Figure 869-5335.3
Photo of Sample pile from 2.0m to 4.0m below ground level, from Test Pit 5335



Figure 869-5335.4
Photo of Test Pit 5335