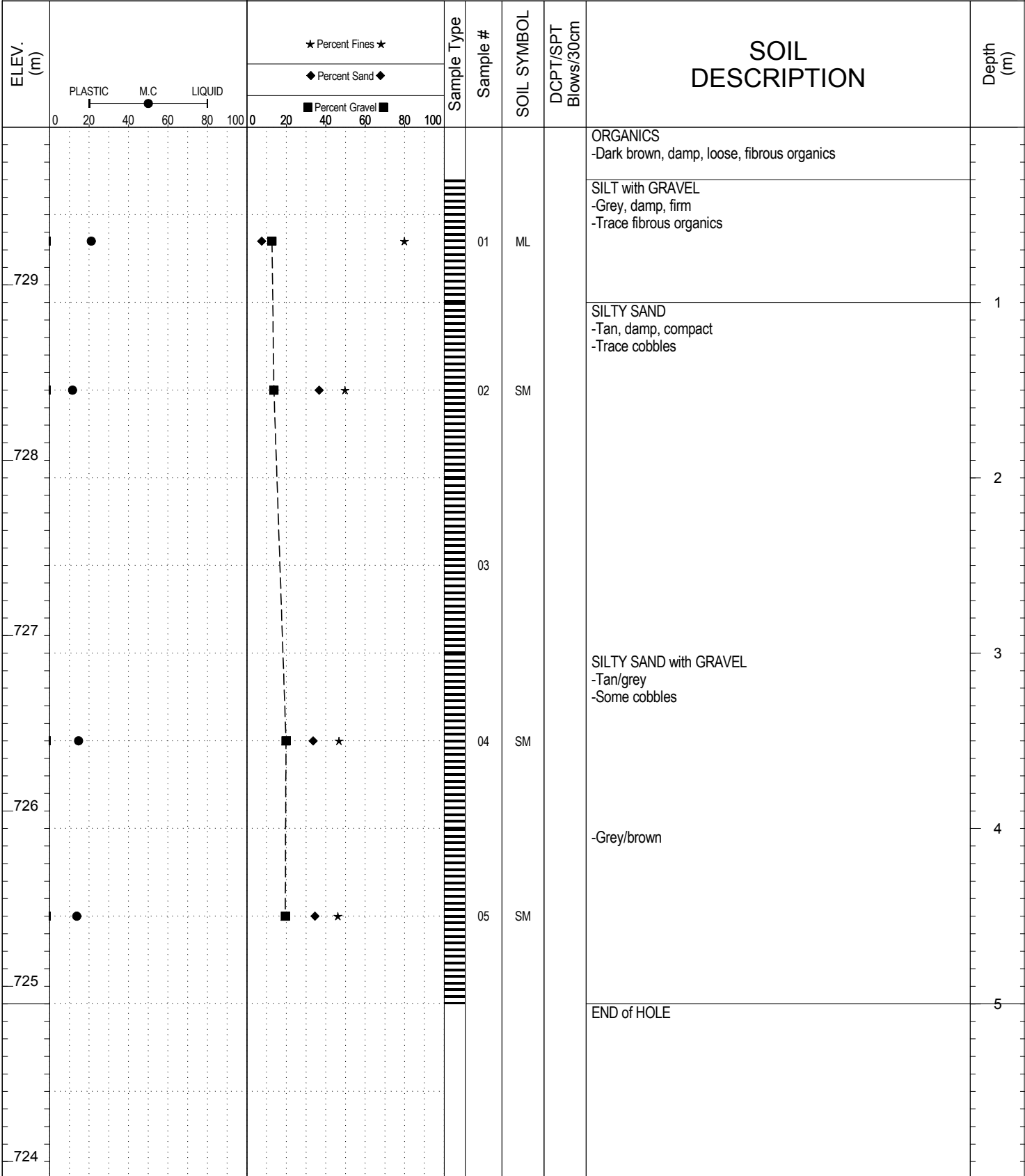


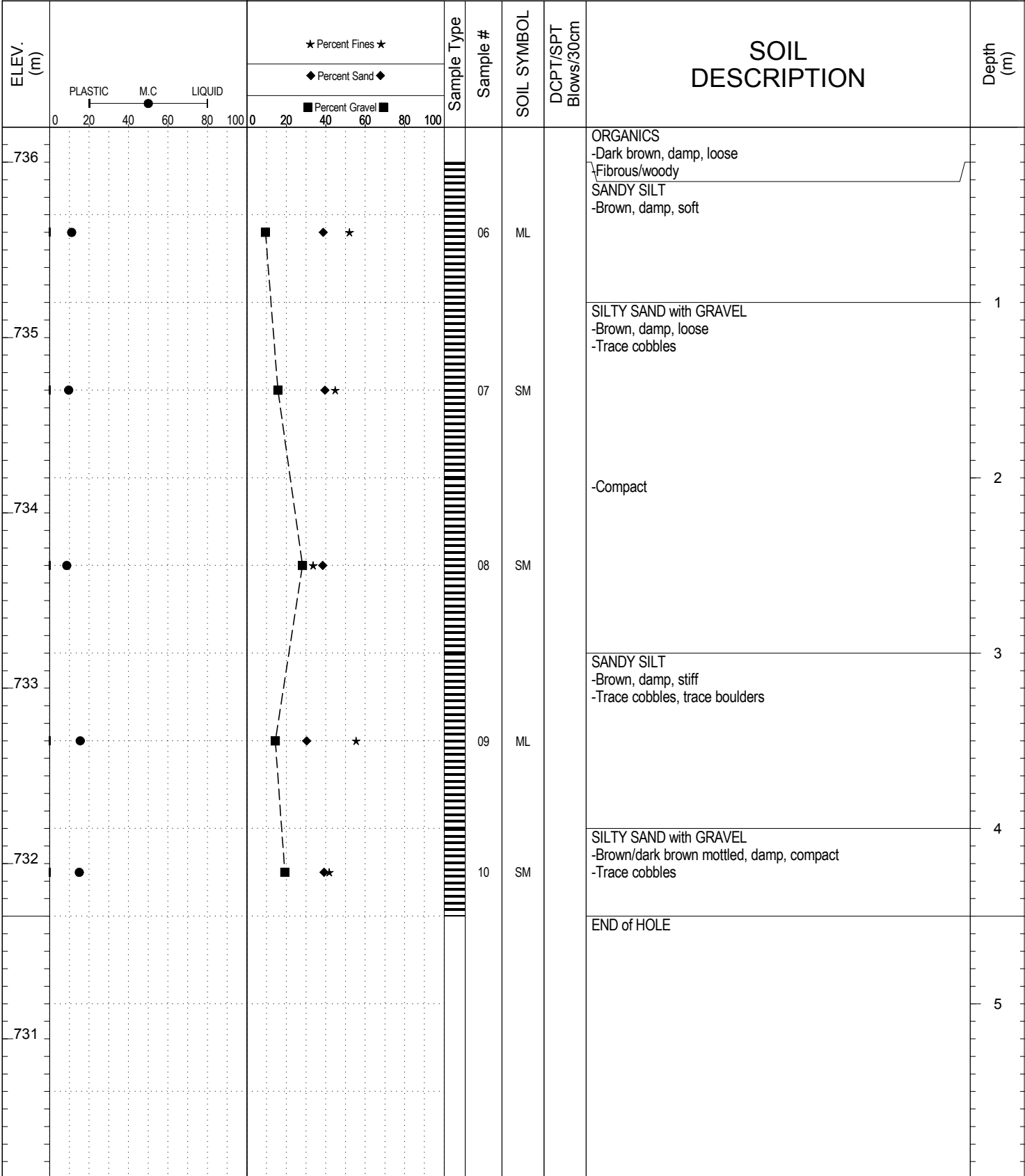
SUBSURFACE EXPLORATION AND TEST REPORT 4 SOURCE/TP#: 870-5336

Campbell hwy pit testing, 82.2-82.7 rhs PROJECT NO: 552-202104-2035-0661-85

CASE 9040B Coordinates: Z09V N6727759m E488710m ELEVATION: 729.9m

SAMPLE TYPE  UNDISTURBED  DCPT  AUGER  BULK  SPT  CORE



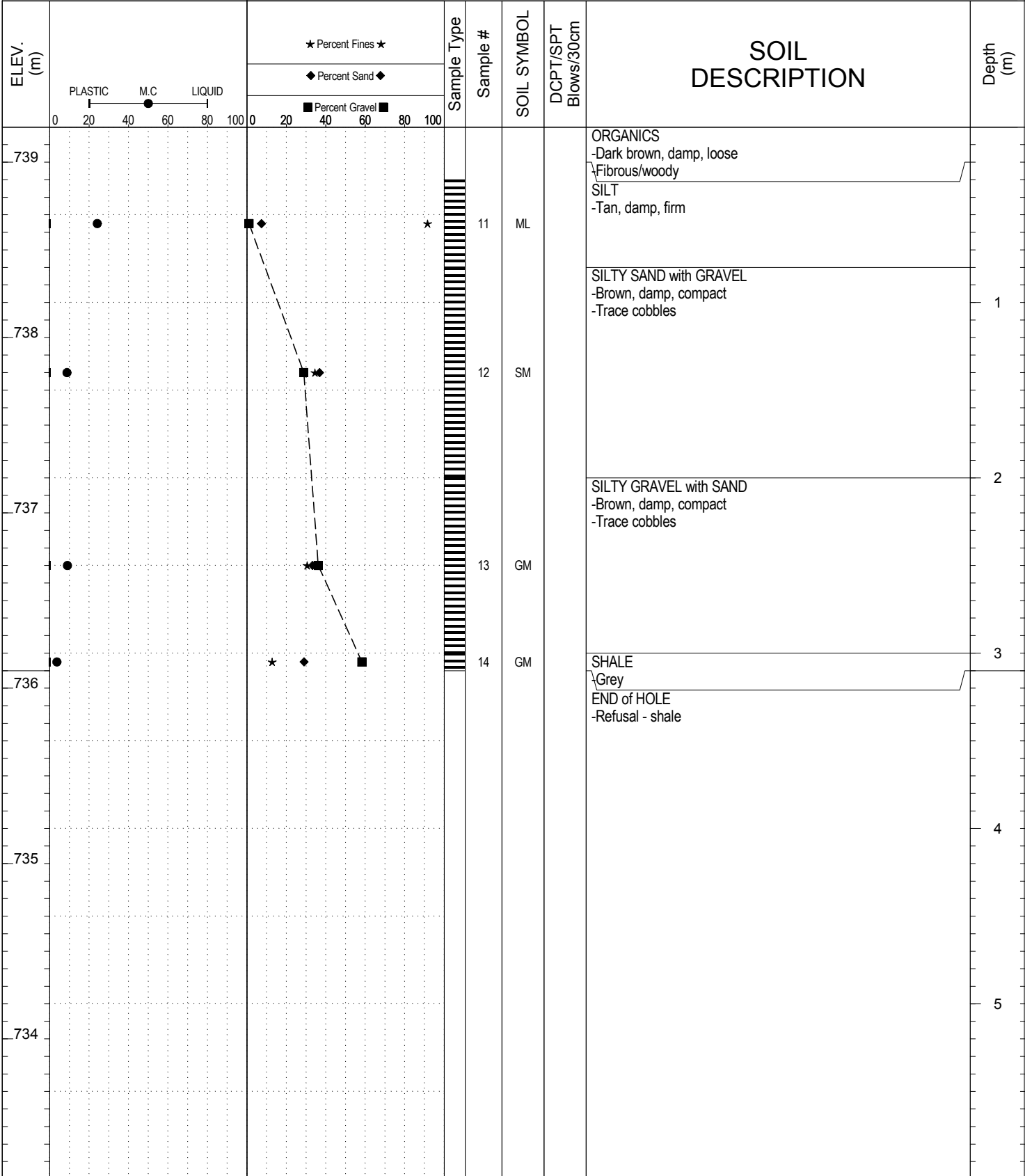


SUBSURFACE EXPLORATION AND TEST REPORT 4 SOURCE/TP#: 870-5338

Campbell hwy pit testing, 82.2-82.7 rhs PROJECT NO: 552-202104-2035-0661-85

CASE 9040B Coordinates: Z09V N6727981m E488691m ELEVATION: 739.2m

SAMPLE TYPE  UNDISTURBED  DCPT  AUGER  BULK  SPT  CORE

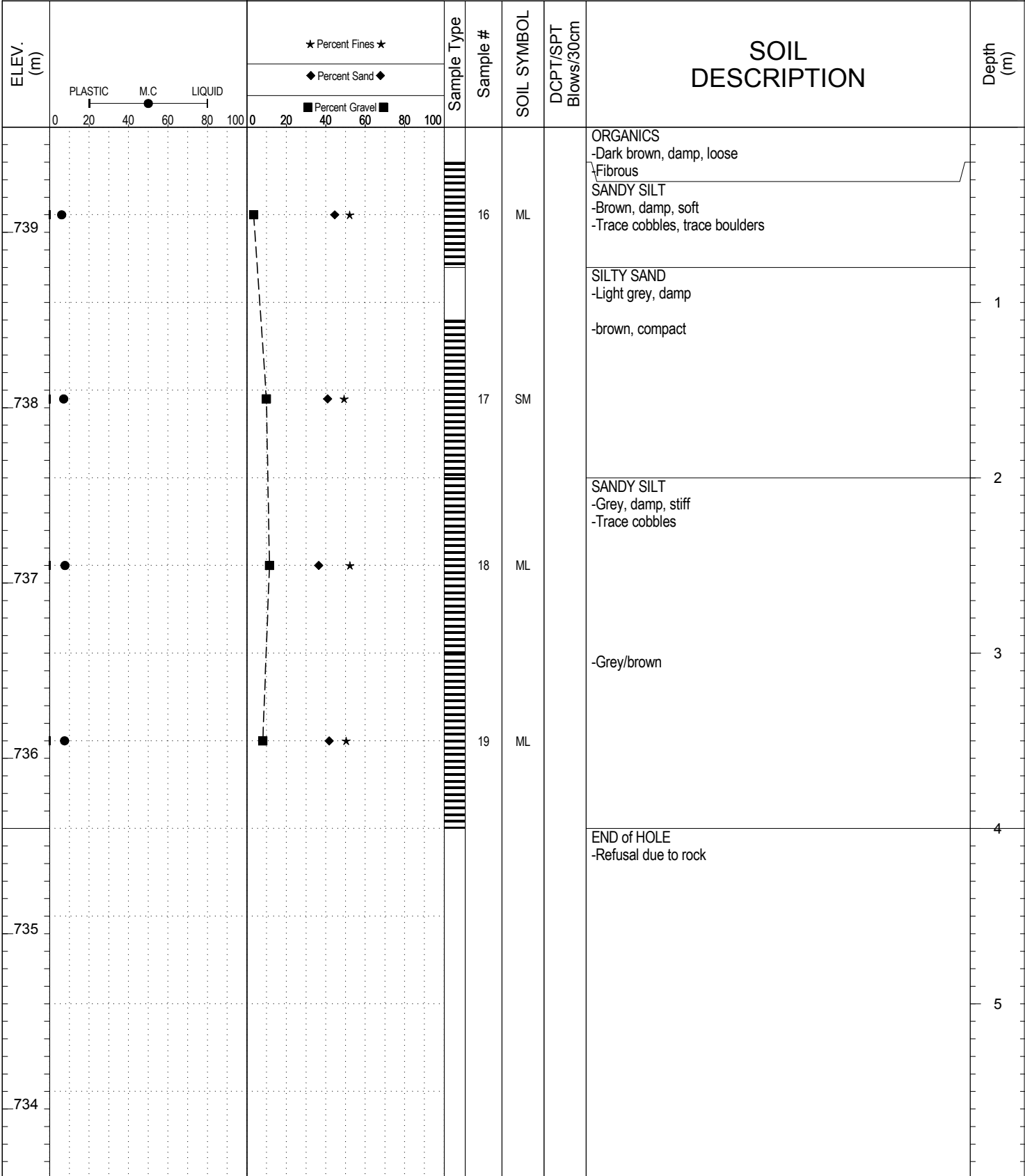


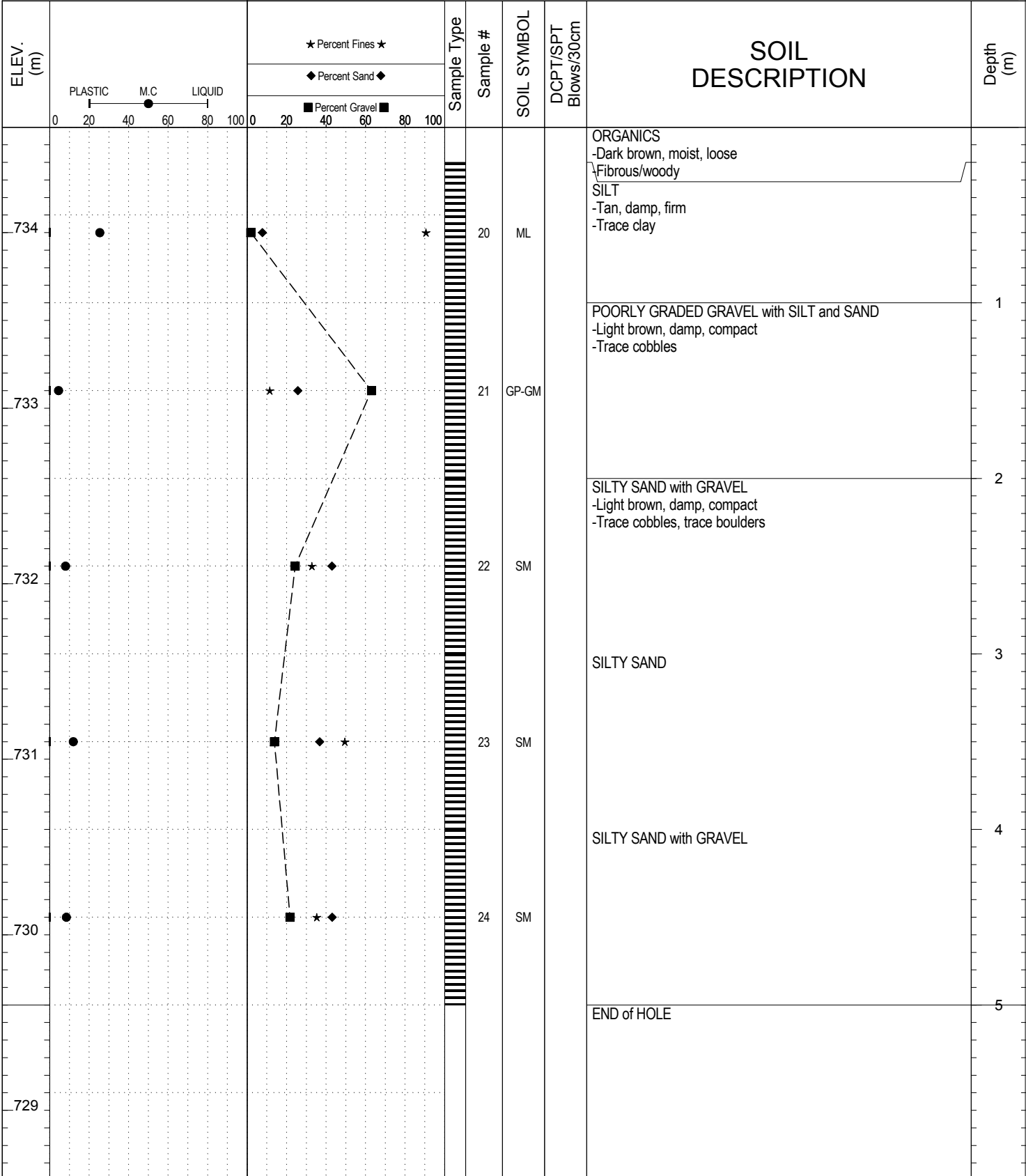
SUBSURFACE EXPLORATION AND TEST REPORT 4 SOURCE/TP#: 870-5339

Campbell hwy pit testing, 82.2-82.7 rhs PROJECT NO: 552-202104-2035-0661-85

CASE 9040B Coordinates: Z09V N6728111m E488679m ELEVATION: 739.6m

SAMPLE TYPE  UNDISTURBED  DCPT  AUGER  BULK  SPT  CORE



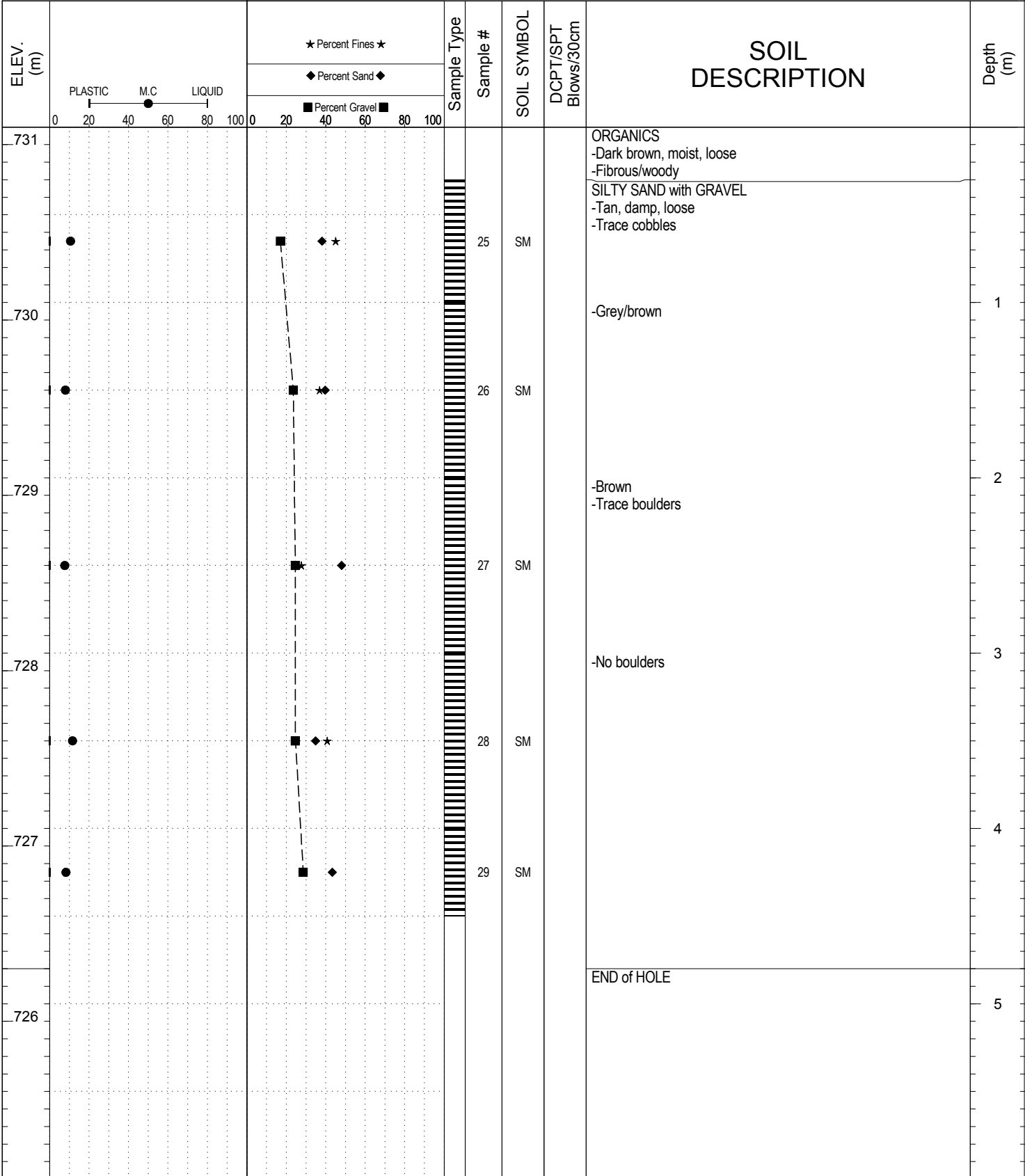


SUBSURFACE EXPLORATION AND TEST REPORT 4 SOURCE/TP#: 870-5341

Campbell hwy pit testing, 82.2-82.7 rhs PROJECT NO: 552-202104-2035-0661-85

CASE 9040B Coordinates: Z09V N6728313m E488661m ELEVATION: 731.1m

SAMPLE TYPE  UNDISTURBED  DCPT  AUGER  BULK  SPT  CORE

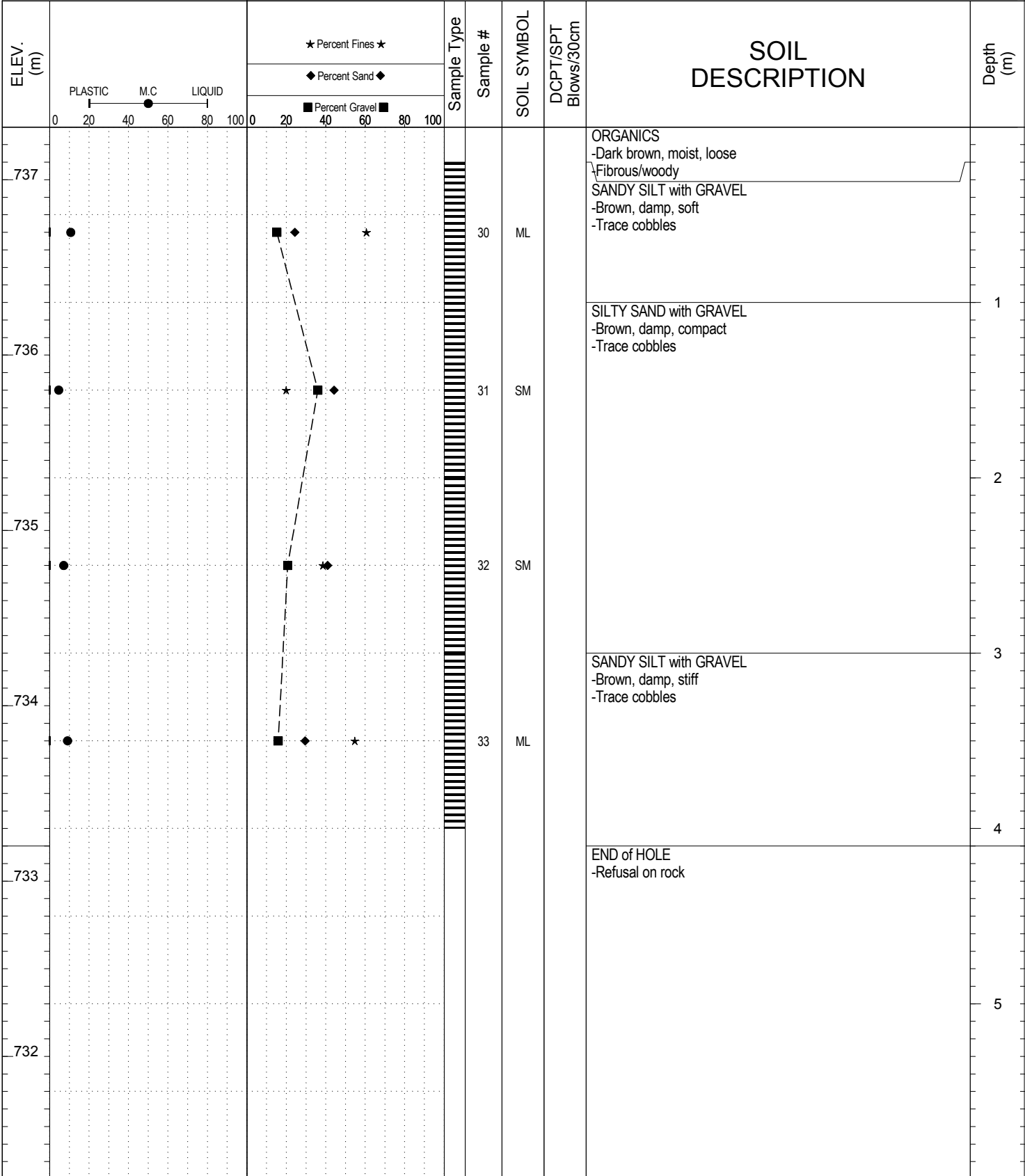


SUBSURFACE EXPLORATION AND TEST REPORT 4 SOURCE/TP#: 870-5342

Campbell hwy pit testing, 82.2-82.7 rhs PROJECT NO: 552-202104-2035-0661-85

CASE 9040B Coordinates: Z09V N6728145m E488673m ELEVATION: 737.3m

SAMPLE TYPE  UNDISTURBED  DCPT  AUGER  BULK  SPT  CORE

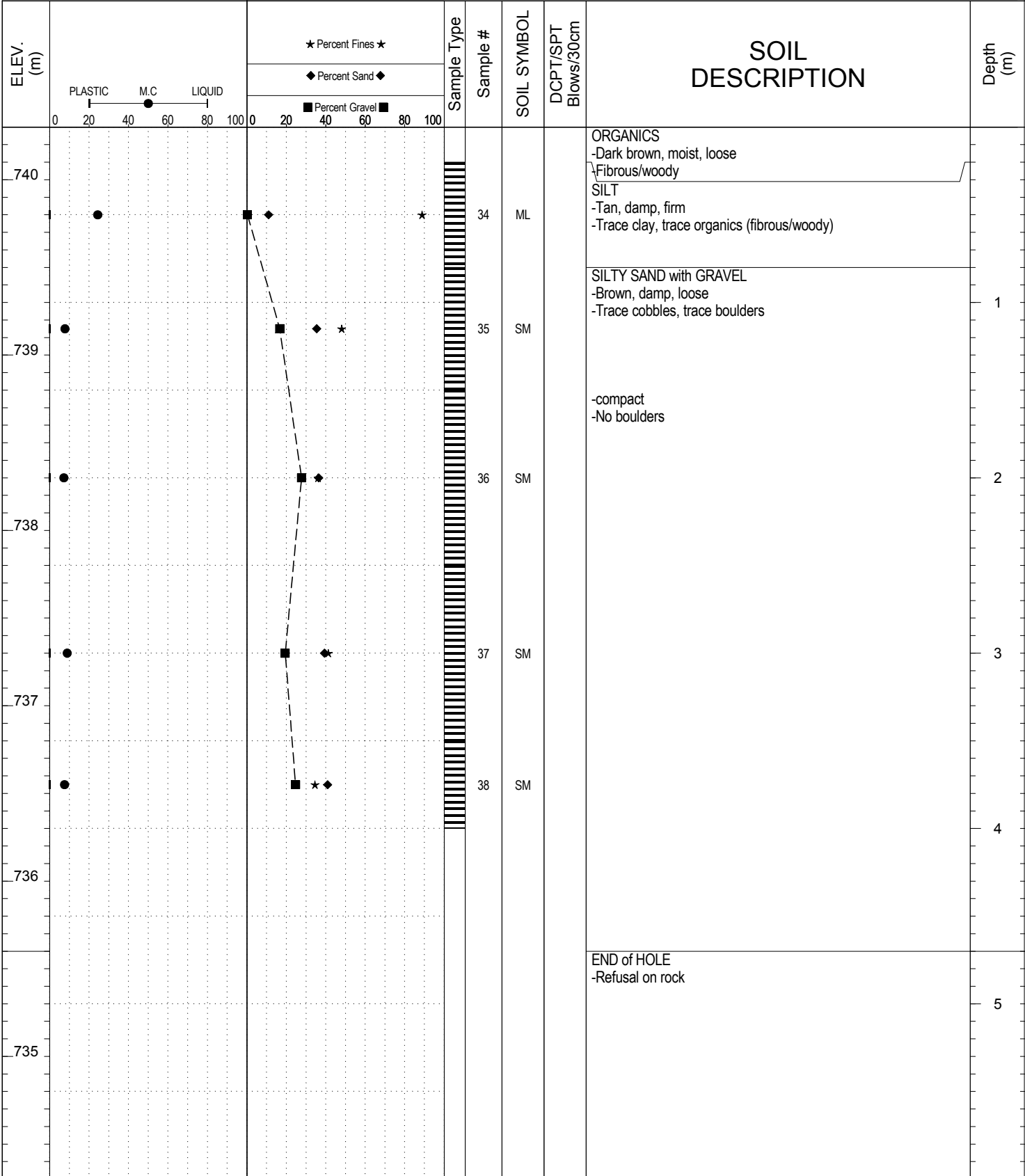


SUBSURFACE EXPLORATION AND TEST REPORT 4 SOURCE/TP#: 870-5343

Campbell hwy pit testing, 82.2-82.7 rhs PROJECT NO: 552-202104-2035-0661-85

CASE 9040B Coordinates: Z09V N6728046m E488620m ELEVATION: 740.3m

SAMPLE TYPE  UNDISTURBED  DCPT  AUGER  BULK  SPT  CORE

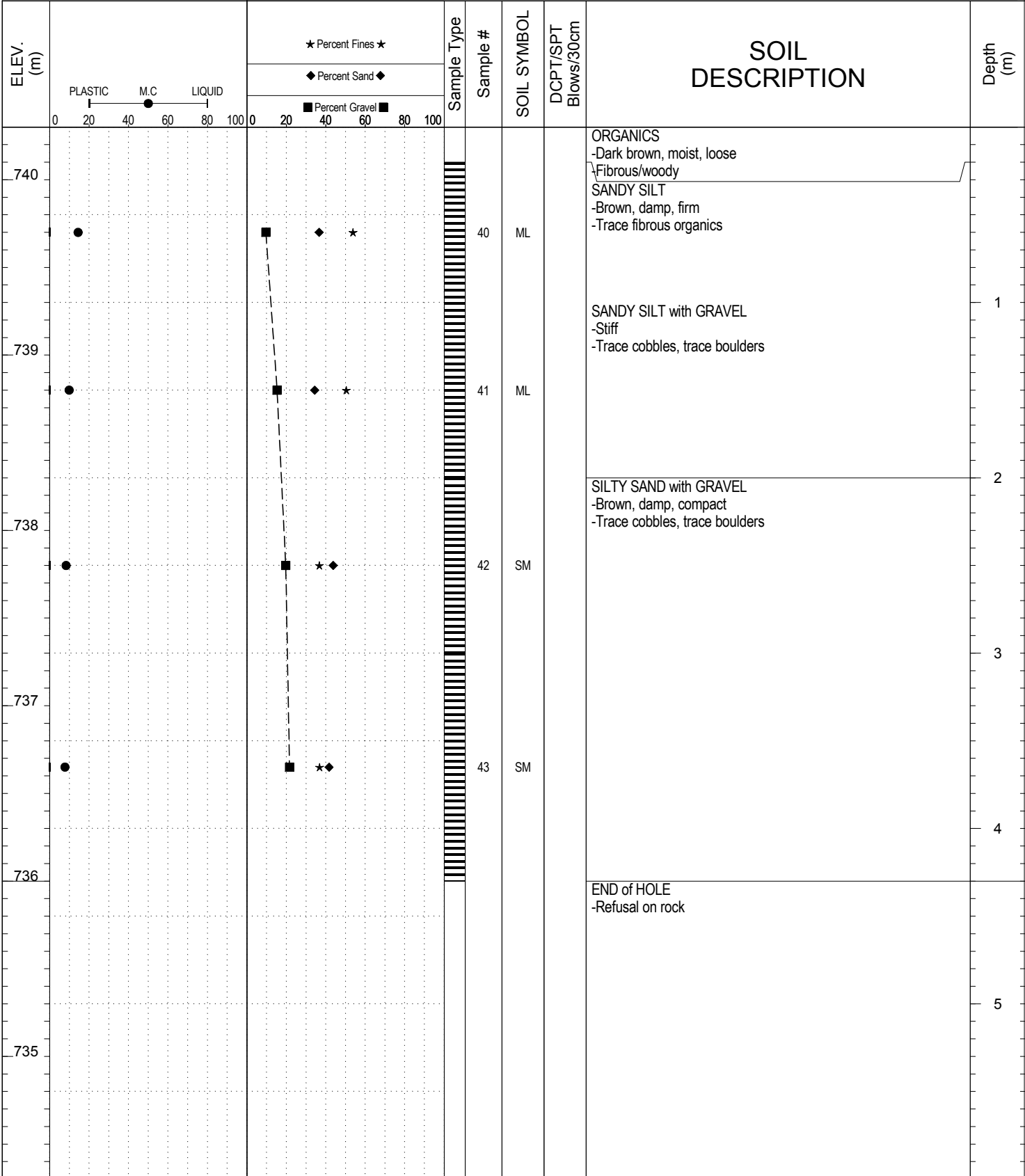


SUBSURFACE EXPLORATION AND TEST REPORT 4 SOURCE/TP#: 870-5344

Campbell hwy pit testing, 82.2-82.7 rhs PROJECT NO: 552-202104-2035-0661-85

CASE 9040B Coordinates: Z09V N6728011m E488680m ELEVATION: 740.3m

SAMPLE TYPE  UNDISTURBED  DCPT  AUGER  BULK  SPT  CORE

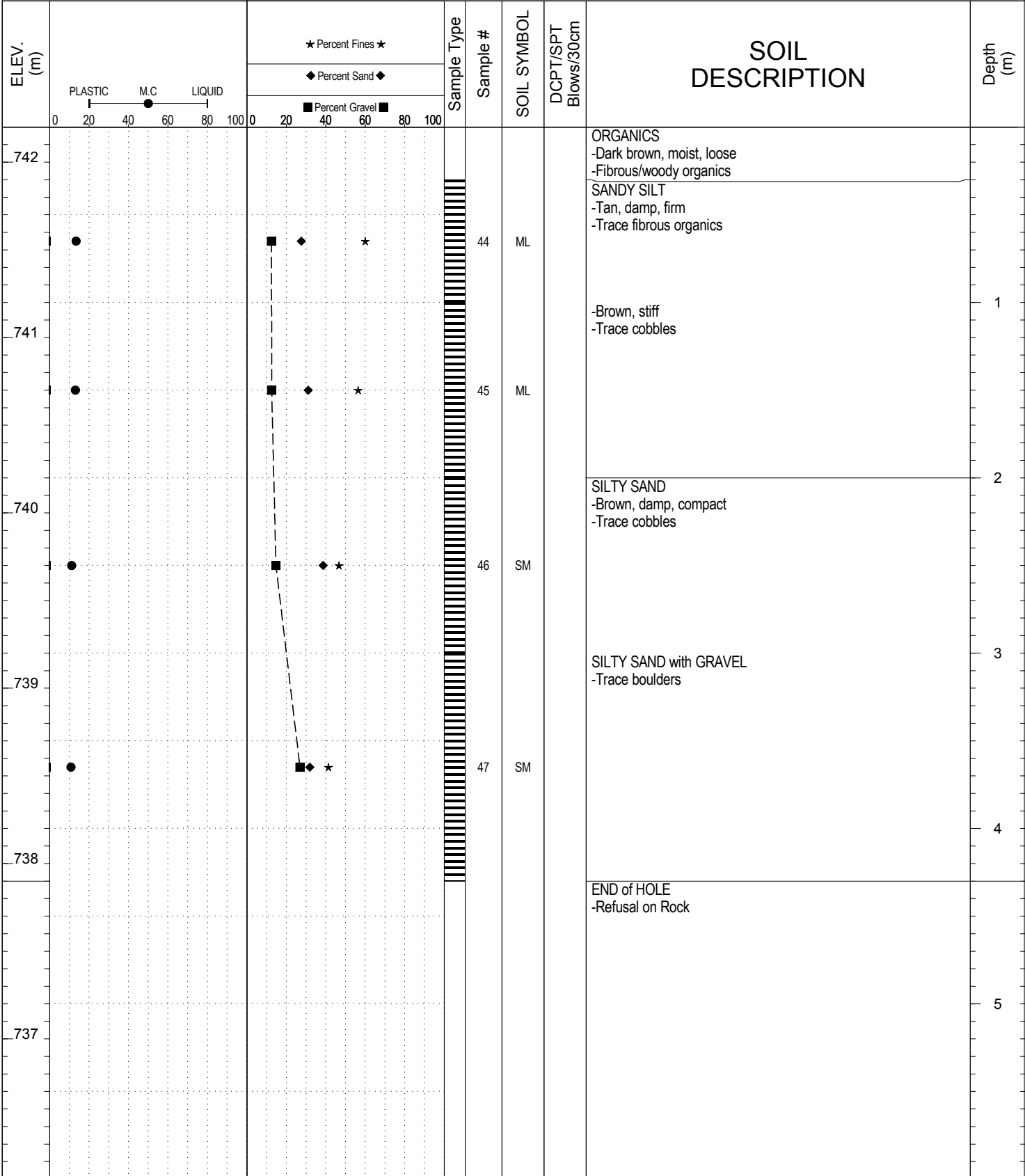


SUBSURFACE EXPLORATION AND TEST REPORT 4 SOURCE/TP#: 870-5345

Campbell hwy pit testing, 82.2-82.7 rhs PROJECT NO: 552-202104-2035-0661-85

CASE 9040B Coordinates: Z09V N6727928m E488693m ELEVATION: 742.2m

SAMPLE TYPE  UNDISTURBED  DCPT  AUGER  BULK  SPT  CORE



GRAIN SIZE ANALYSIS	Campbell hwy pit testing	SOURCE/TP#: 870-5336
	82.2-82.7 rhs	PROJECT NO: 552-202104-2035-0661-85
CASE 9040B	Coordinates:Z09V N6727759m E488710m	ELEVATION: 729.9m

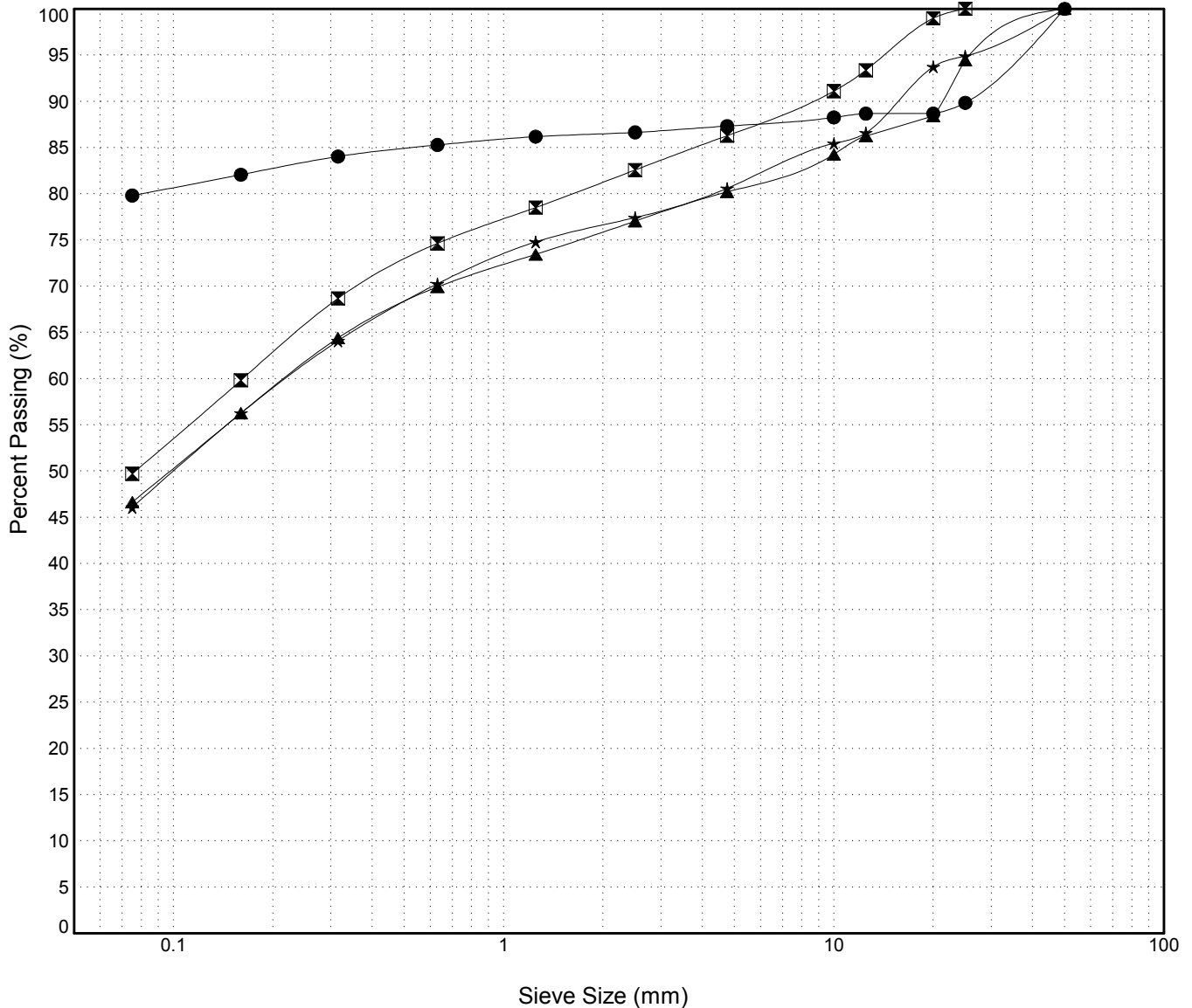
Master Revised July 2013

Field #	Lab #	Depth	Classification	%H2O	LL	PL	PI	Cc	Cu
● 01	196	0.3 to 1.0	SILT with GRAVEL(ML)	21.1	NP	NP	NP		
☒ 02	197	1.0 to 2.0	SILTY SAND(SM)	11.6	NP	NP	NP		
▲ 04	199	3.0 to 4.0	SILTY SAND with GRAVEL(SM)	14.6	NP	NP	NP		
★ 05	200	4.0 to 5.0	SILTY SAND with GRAVEL(SM)	13.7	NP	NP	NP		

Field #	Lab #	% PASSING														% Breakdown			
		100.0	80.0	50.0	25.0	20.0	12.5	10.0	5.0	2.5	1.25	0.630	0.315	0.160	0.080	Gravel	Sand	Silt	Clay
● 01	196	100.0	100.0	100.0	89.8	88.7	88.7	88.3	87.3	86.6	86.2	85.3	84.0	82.1	79.8	12.7	7.5	79.8	
☒ 02	197	100.0	100.0	100.0	100.0	99.0	93.4	91.1	86.3	82.6	78.5	74.6	68.7	59.8	49.7	13.7	36.6	49.7	
▲ 04	199	100.0	100.0	100.0	94.4	88.4	86.3	84.3	80.2	77.0	73.4	69.9	64.4	56.3	46.6	19.8	33.6	46.6	
★ 05	200	100.0	100.0	100.0	94.9	93.7	86.6	85.4	80.6	77.4	74.8	70.3	64.1	56.3	46.1	19.4	34.5	46.1	

Silt	Sand			Gravel	
	Fine	Medium	Coarse	Fine	Coarse



GRAIN SIZE ANALYSIS	Campbell hwy pit testing	SOURCE/TP#: 870-5337
	82.2-82.7 rhs	PROJECT NO: 552-202104-2035-0661-85
CASE 9040B	Coordinates:Z09V N6727866m E488702m	ELEVATION: 736.2m

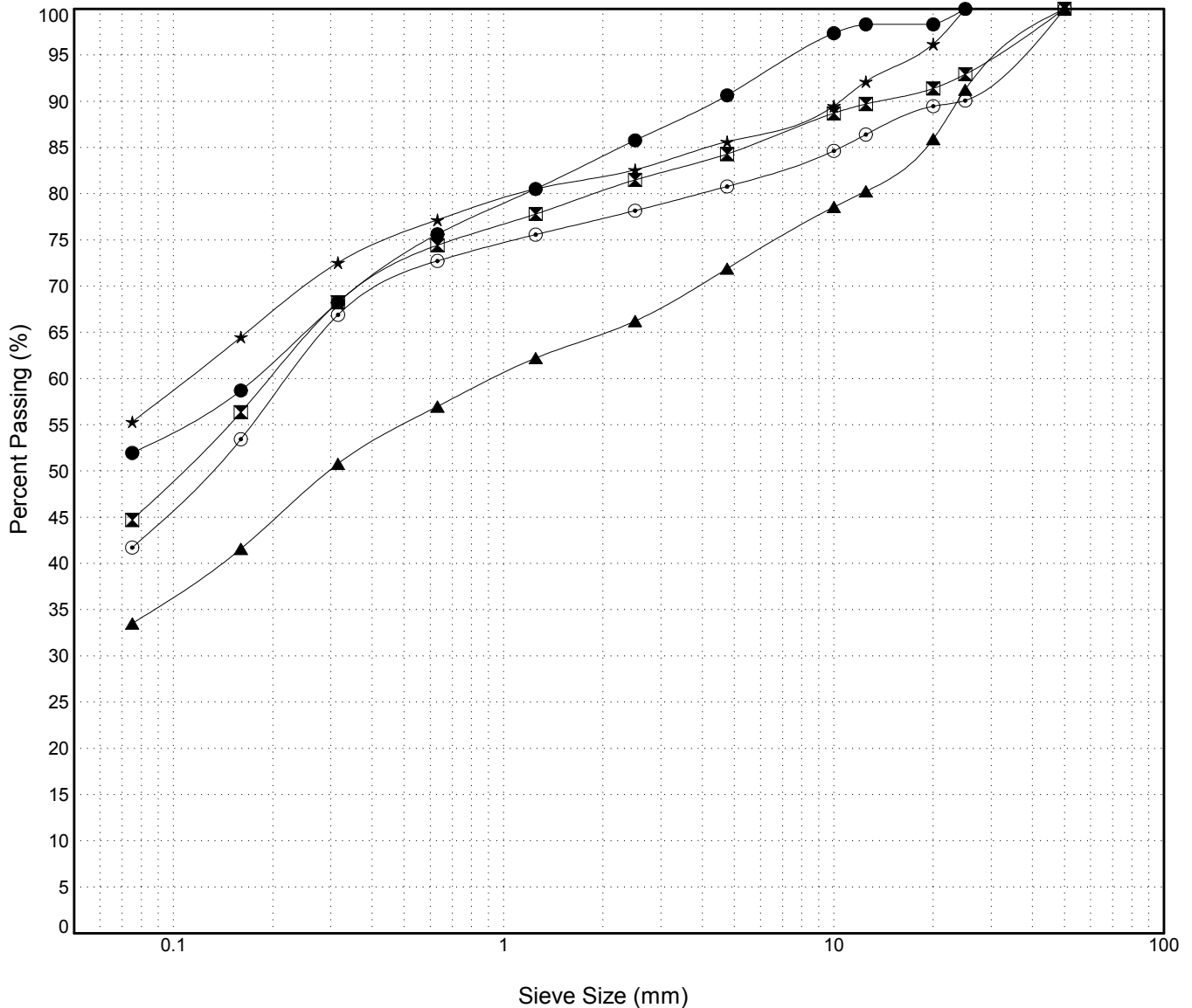
Master Revised July 2013

Field #	Lab #	Depth	Classification	%H2O	LL	PL	PI	Cc	Cu
● 06	201	0.2 to 1.0	SANDY SILT (ML)	11.1	NP	NP	NP		
☒ 07	202	1.0 to 2.0	SILTY SAND with GRAVEL (SM)	9.6	NP	NP	NP		
▲ 08	203	2.0 to 3.0	SILTY SAND with GRAVEL (SM)	8.6	NP	NP	NP		
★ 09	204	3.0 to 4.0	SANDY SILT (ML)	15.5	NP	NP	NP		
⊙ 10	205	4.0 to 4.5	SILTY SAND with GRAVEL (SM)	15.0	NP	NP	NP		

Field #	Lab #	% PASSING													% Breakdown				
		100.0	80.0	50.0	25.0	20.0	12.5	10.0	5.0	2.5	1.25	0.630	0.315	0.160	0.080	Gravel	Sand	Silt	Clay
● 06	201	100.0	100.0	100.0	100.0	98.3	98.3	97.4	90.6	85.8	80.5	75.6	68.3	58.7	52.0	9.4	38.7	52.0	
☒ 07	202	100.0	100.0	100.0	92.9	91.4	89.7	88.7	84.3	81.5	77.8	74.4	68.3	56.4	44.7	15.7	39.6	44.7	
▲ 08	203	100.0	100.0	100.0	91.3	85.9	80.3	78.6	71.9	66.2	62.2	57.0	50.8	41.6	33.5	28.1	38.4	33.5	
★ 09	204	100.0	100.0	100.0	100.0	96.2	92.1	89.5	85.6	82.6	80.5	77.2	72.5	64.5	55.3	14.4	30.3	55.3	
⊙ 10	205	100.0	100.0	100.0	90.1	89.5	86.4	84.6	80.8	78.2	75.6	72.7	66.9	53.4	41.7	19.2	39.1	41.7	

Silt	Sand			Gravel	
	Fine	Medium	Coarse	Fine	Coarse



GRAIN SIZE ANALYSIS	Campbell hwy pit testing	SOURCE/TP#: 870-5338
	82.2-82.7 rhs	PROJECT NO: 552-202104-2035-0661-85
CASE 9040B	Coordinates:Z09V N6727981m E488691m	ELEVATION: 739.2m

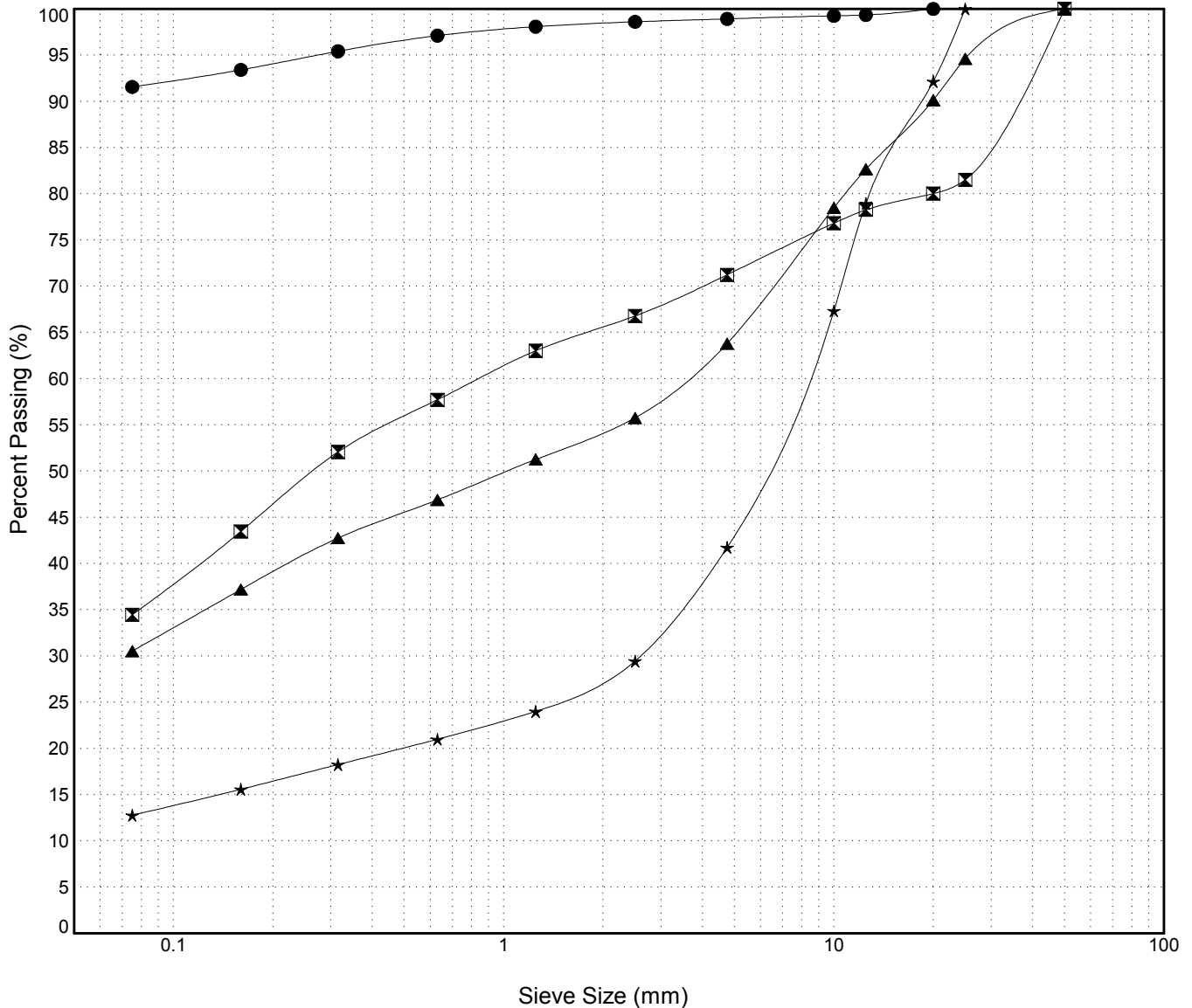
Master Revised July 2013

Field #	Lab #	Depth	Classification	%H2O	LL	PL	PI	Cc	Cu
● 11	206	0.3 to 0.8	SILT(ML)	24.1	NP	NP	NP		
☒ 12	207	0.8 to 2.0	SILTY SAND with GRAVEL(SM)	8.8	NP	NP	NP		
▲ 13	208	2.0 to 3.0	SILTY GRAVEL with SAND(GM)	9.0	NP	NP	NP		
★ 14	209	3.0 to 3.1	SILTY GRAVEL with SAND(GM)	3.6	NP	NP	NP		

Field #	Lab #	% PASSING													% Breakdown				
		100.0	80.0	50.0	25.0	20.0	12.5	10.0	5.0	2.5	1.25	0.630	0.315	0.160	0.080	Gravel	Sand	Silt	Clay
● 11	206	100.0	100.0	100.0	100.0	100.0	99.3	99.3	98.9	98.6	98.1	97.1	95.4	93.4	91.6	1.1	7.4	91.6	
☒ 12	207	100.0	100.0	100.0	81.5	80.0	78.3	76.8	71.2	66.8	63.0	57.7	52.1	43.5	34.5	28.8	36.8	34.5	
▲ 13	208	100.0	100.0	100.0	94.6	90.1	82.6	78.5	63.8	55.8	51.3	46.9	42.8	37.2	30.5	36.2	33.3	30.5	
★ 14	209	100.0	100.0	100.0	100.0	92.1	78.9	67.3	41.7	29.4	24.0	21.0	18.3	15.6	12.8	58.3	29.0	12.8	

Silt	Sand			Gravel	
	Fine	Medium	Coarse	Fine	Coarse



GRAIN SIZE ANALYSIS	Campbell hwy pit testing	SOURCE/TP#: 870-5339
	82.2-82.7 rhs	PROJECT NO: 552-202104-2035-0661-85
CASE 9040B	Coordinates:Z09V N6728111m E488679m	ELEVATION: 739.6m

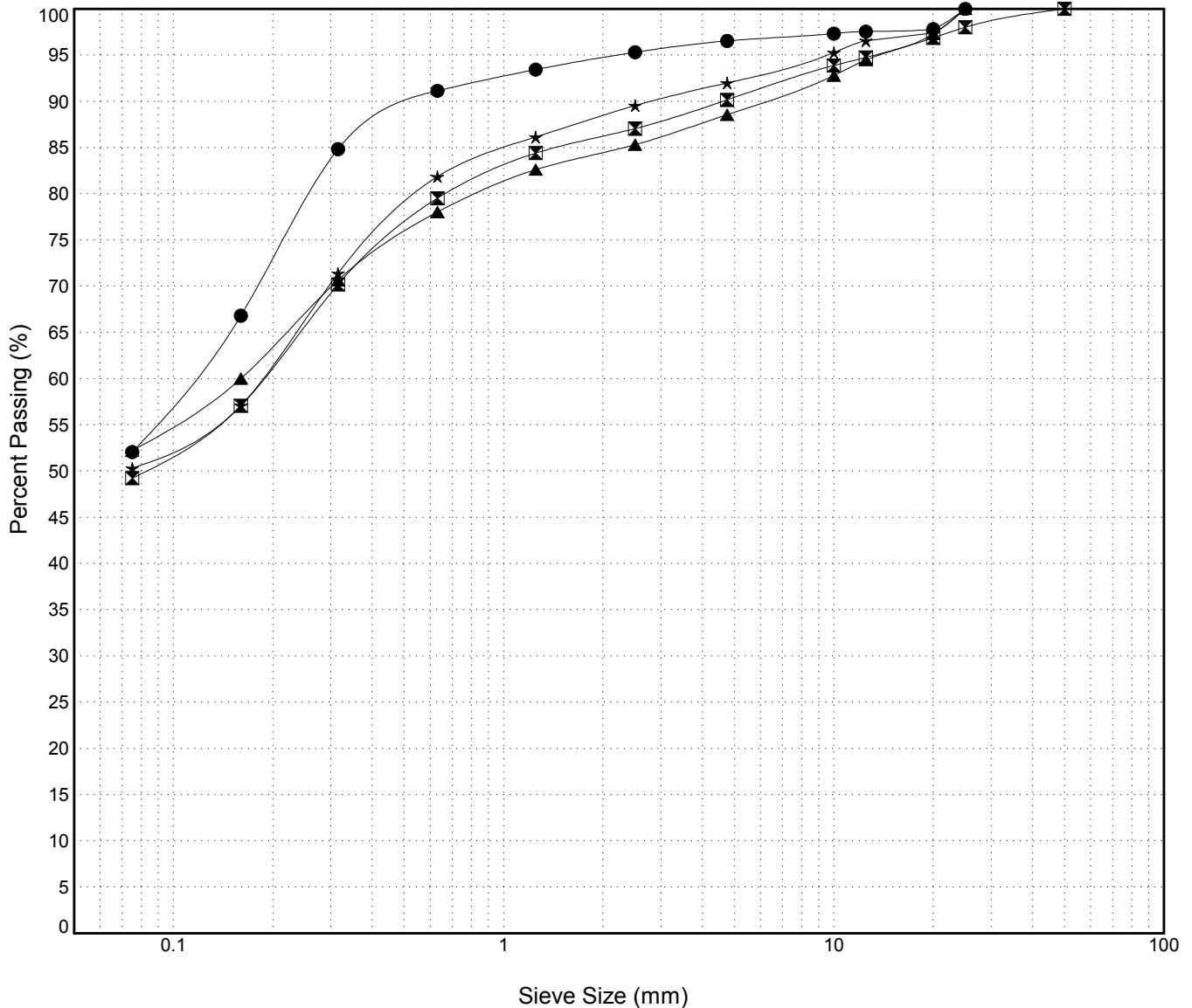
Master Revised July 2013

Field #	Lab #	Depth	Classification	%H2O	LL	PL	PI	Cc	Cu
● 16	211	0.2 to 0.8	SANDY SILT(ML)	6.1	NP	NP	NP		
☒ 17	212	1.1 to 2.0	SILTY SAND(SM)	7.1	NP	NP	NP		
▲ 18	213	2.0 to 3.0	SANDY SILT(ML)	7.7	NP	NP	NP		
★ 19	214	3.0 to 4.0	SANDY SILT(ML)	7.5	NP	NP	NP		

Field #	Lab #	%PASSING														% Breakdown			
			100.0	80.0	50.0	25.0	20.0	12.5	10.0	5.0	2.5	1.25	0.630	0.315	0.160	0.080	Gravel	Sand	Silt
● 16	211	100.0	100.0	100.0	100.0	97.8	97.5	97.3	96.5	95.3	93.4	91.1	84.8	66.8	52.1	3.5	44.5	52.1	
☒ 17	212	100.0	100.0	100.0	98.0	96.9	94.8	93.9	90.2	87.1	84.4	79.5	70.2	57.1	49.2	9.8	40.9	49.2	
▲ 18	213	100.0	100.0	100.0	100.0	97.3	94.5	92.8	88.6	85.3	82.6	78.0	70.7	60.0	52.2	11.4	36.4	52.2	
★ 19	214	100.0	100.0	100.0	100.0	97.4	96.6	95.3	92.0	89.5	86.1	81.8	71.4	57.1	50.3	8.0	41.7	50.3	

Silt	Sand			Gravel	
	Fine	Medium	Coarse	Fine	Coarse



GRAIN SIZE ANALYSIS	Campbell hwy pit testing	SOURCE/TP#: 870-5340
	82.2-82.7 rhs	PROJECT NO: 552-202104-2035-0661-85
CASE 9040B	Coordinates:Z09V N6728178m E488671m	ELEVATION: 734.6m

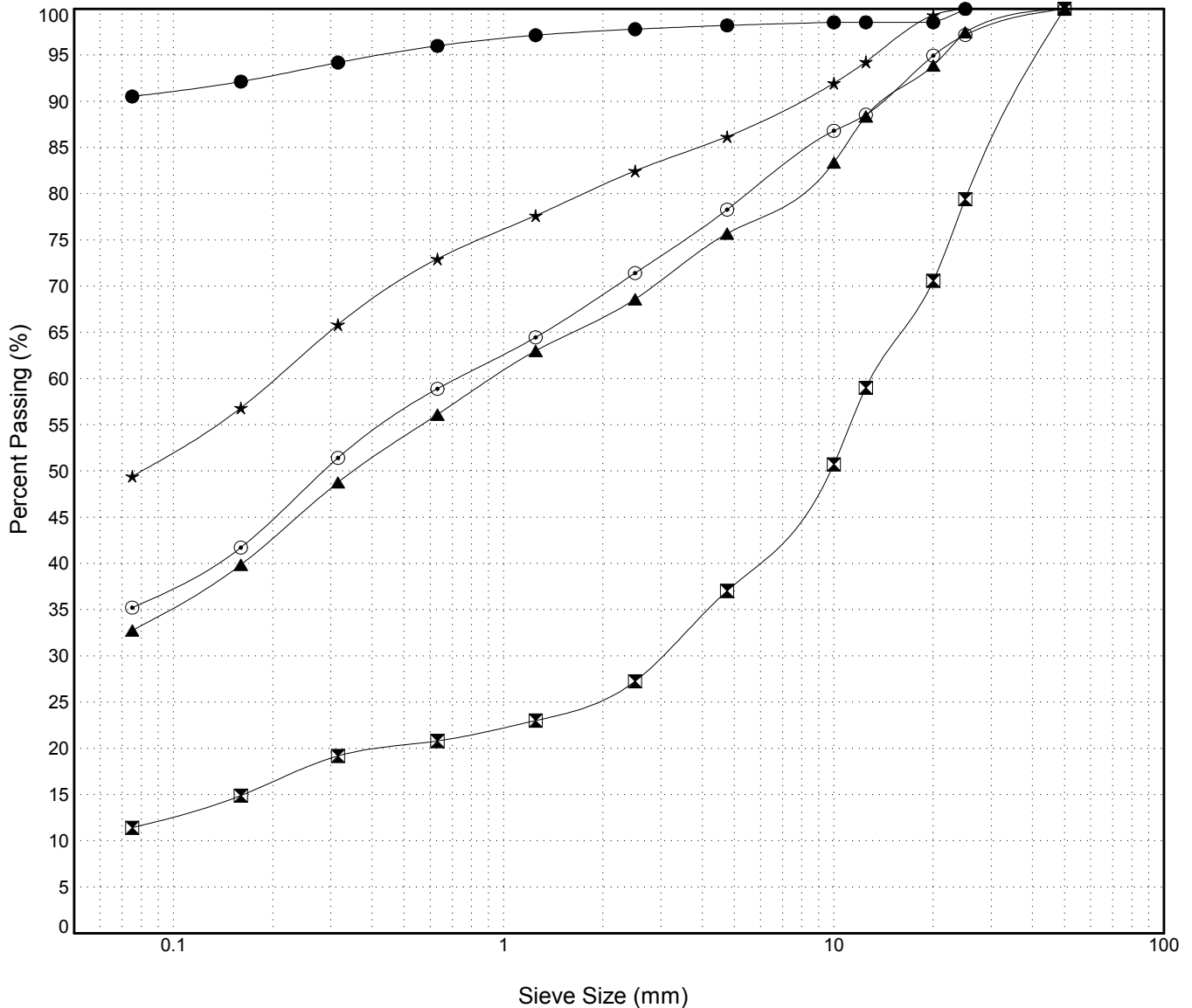
Master Revised July 2013

Field #	Lab #	Depth	Classification	%H2O	LL	PL	PI	Cc	Cu
● 20	215	0.2 to 1.0	SILT(ML)	25.4	NP	NP	NP		
☒ 21	216	1.0 to 2.0	POORLY GRADED GRAVEL with SILT and SAND(GP-GM)	4.4	NP	NP	NP	12.5	236.5
▲ 22	217	2.0 to 3.0	SILTY SAND with GRAVEL(SM)	8.0	NP	NP	NP		
★ 23	218	3.0 to 4.0	SILTY SAND(SM)	11.9	NP	NP	NP		
⊙ 24	219	4.0 to 5.0	SILTY SAND with GRAVEL(SM)	8.4	NP	NP	NP		

Field #	Lab #	%PASSING															% Breakdown		
		100.0	80.0	50.0	25.0	20.0	12.5	10.0	5.0	2.5	1.25	0.630	0.315	0.160	0.080	Gravel	Sand	Silt	Clay
● 20	215	100.0	100.0	100.0	100.0	98.5	98.5	98.5	98.2	97.8	97.2	96.0	94.2	92.1	90.5	1.8	7.7	90.5	
☒ 21	216	100.0	100.0	100.0	79.4	70.6	59.0	50.7	37.0	27.3	23.0	20.8	19.2	14.9	11.4	63.0	25.6	11.4	
▲ 22	217	100.0	100.0	100.0	97.5	93.9	88.4	83.4	75.7	68.6	63.0	56.1	48.8	39.9	32.8	24.3	42.9	32.8	
★ 23	218	100.0	100.0	100.0	100.0	99.3	94.3	92.0	86.2	82.5	77.6	73.0	65.8	56.8	49.4	13.8	36.7	49.4	
⊙ 24	219	100.0	100.0	100.0	97.2	94.9	88.5	86.8	78.3	71.4	64.5	58.9	51.4	41.7	35.2	21.7	43.1	35.2	

Silt	Sand			Gravel	
	Fine	Medium	Coarse	Fine	Coarse



GRAIN SIZE ANALYSIS	Campbell hwy pit testing	SOURCE/TP#: 870-5341
	82.2-82.7 rhs	PROJECT NO: 552-202104-2035-0661-85
CASE 9040B	Coordinates:Z09V N6728313m E488661m	ELEVATION: 731.1m

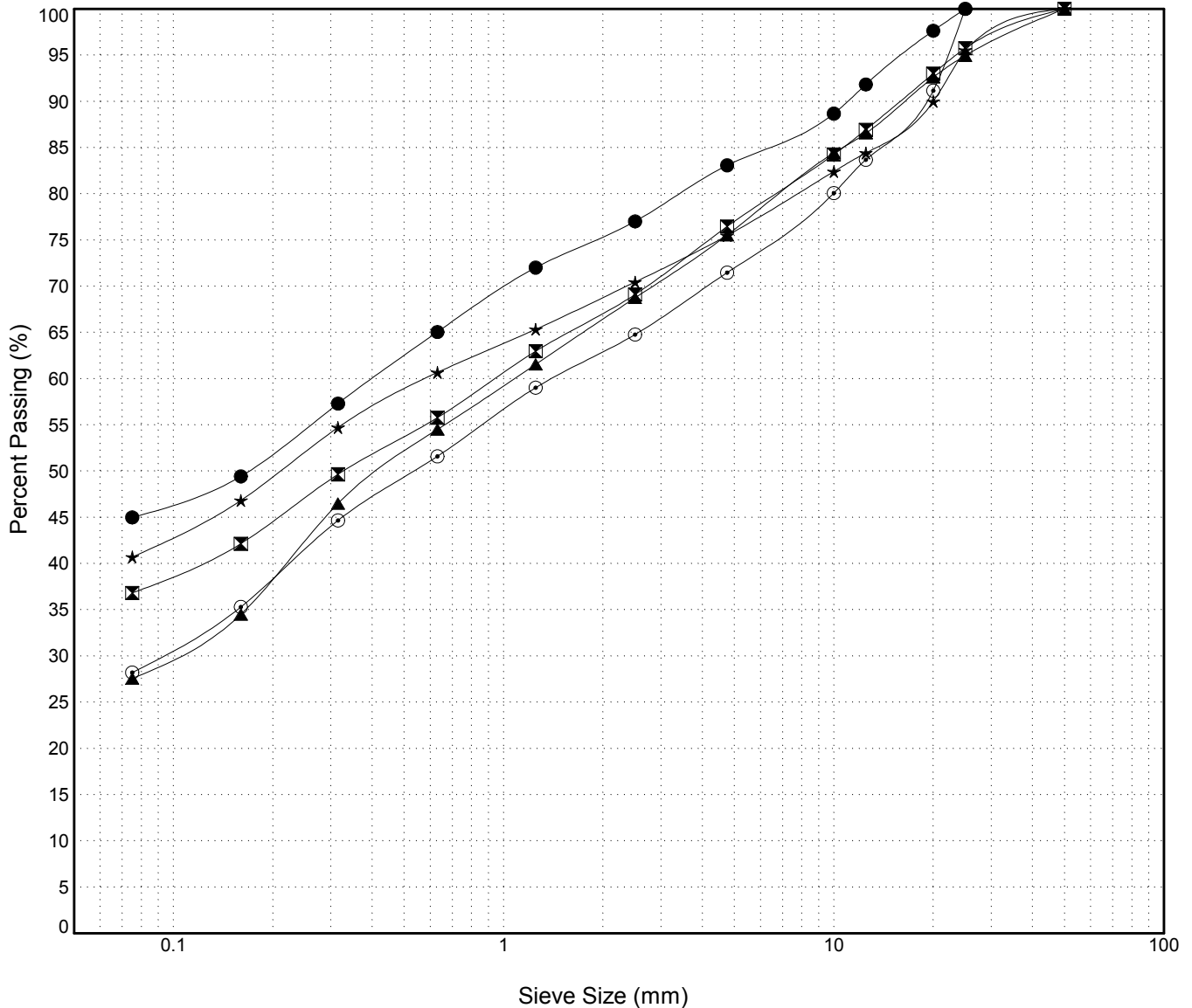
Master Revised July 2013

Field #	Lab #	Depth	Classification	%H2O	LL	PL	PI	Cc	Cu
● 25	220	0.3 to 1.0	SILTY SAND with GRAVEL(SM)	10.5	NP	NP	NP		
☒ 26	221	1.0 to 2.0	SILTY SAND with GRAVEL(SM)	8.0	NP	NP	NP		
▲ 27	222	2.0 to 3.0	SILTY SAND with GRAVEL(SM)	7.6	NP	NP	NP		
★ 28	223	3.0 to 4.0	SILTY SAND with GRAVEL(SM)	11.6	NP	NP	NP		
⊙ 29	224	4.0 to 4.5	SILTY SAND with GRAVEL(SM)	8.2	NP	NP	NP		

Field #	Lab #	% PASSING														% Breakdown			
		100.0	80.0	50.0	25.0	20.0	12.5	10.0	5.0	2.5	1.25	0.630	0.315	0.160	0.080	Gravel	Sand	Silt	Clay
● 25	220	100.0	100.0	100.0	100.0	97.6	91.8	88.7	83.1	77.0	72.0	65.0	57.3	49.4	45.0	16.9	38.1	45.0	
☒ 26	221	100.0	100.0	100.0	95.7	93.0	86.9	84.2	76.5	69.1	63.0	55.8	49.6	42.1	36.8	23.5	39.6	36.8	
▲ 27	222	100.0	100.0	100.0	94.9	92.6	86.5	84.4	75.5	68.7	61.5	54.5	46.5	34.5	27.6	24.5	48.0	27.6	
★ 28	223	100.0	100.0	100.0	95.5	90.0	84.4	82.4	75.5	70.5	65.3	60.7	54.7	46.8	40.7	24.5	34.8	40.7	
⊙ 29	224	100.0	100.0	100.0	100.0	91.2	83.7	80.1	71.5	64.8	59.0	51.6	44.7	35.3	28.2	28.5	43.3	28.2	

Silt	Sand			Gravel	
	Fine	Medium	Coarse	Fine	Coarse



GRAIN SIZE ANALYSIS	Campbell hwy pit testing	SOURCE/TP#: 870-5342
	82.2-82.7 rhs	PROJECT NO: 552-202104-2035-0661-85
CASE 9040B	Coordinates:Z09V N6728145m E488673m	ELEVATION: 737.3m

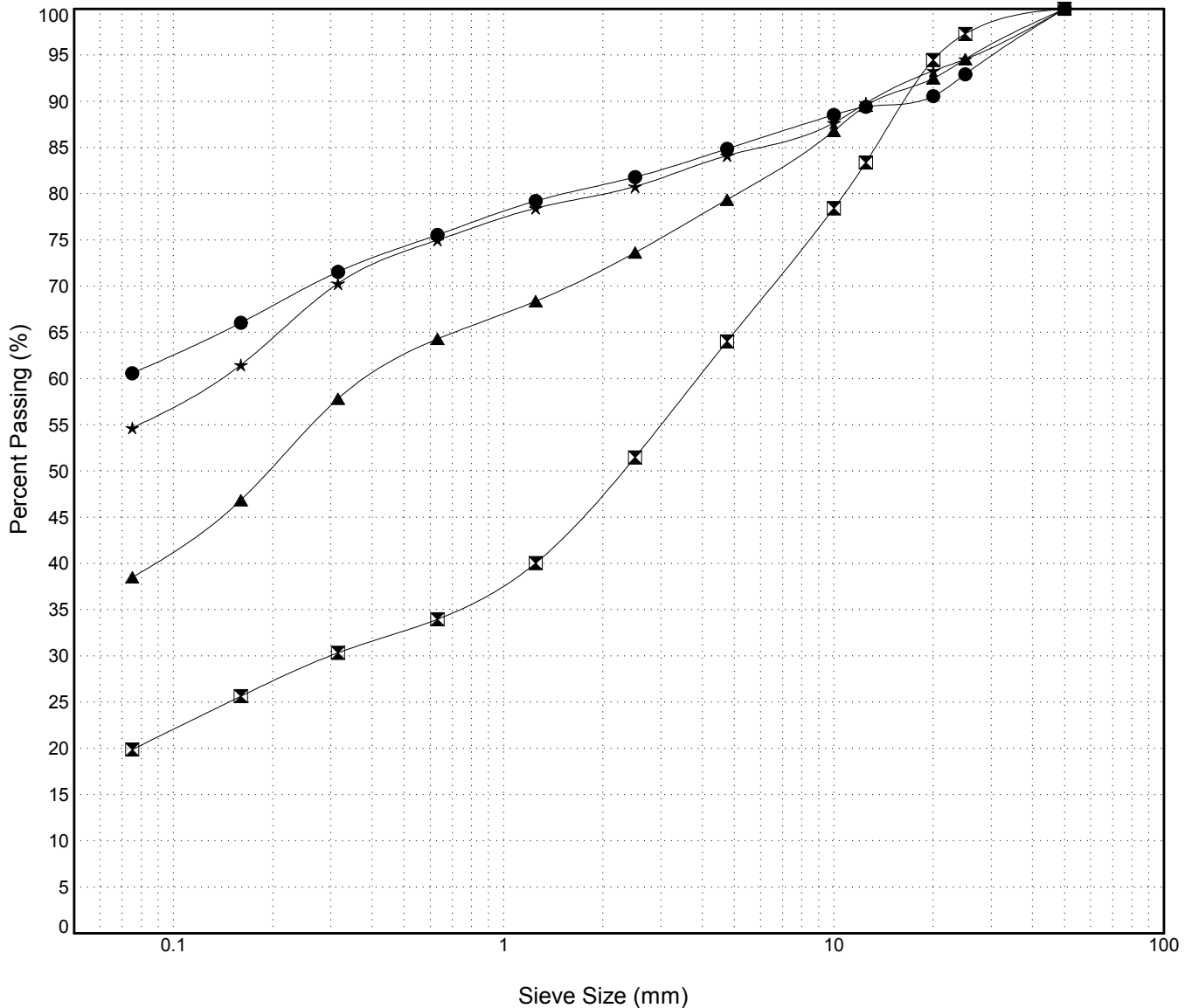
Master Revised July 2013

Field #	Lab #	Depth	Classification	%H2O	LL	PL	PI	Cc	Cu
● 30	225	0.2 to 1.0	SANDY SILT with GRAVEL(ML)	10.7	NP	NP	NP		
☒ 31	226	1.0 to 2.0	SILTY SAND with GRAVEL(SM)	4.6	NP	NP	NP		
▲ 32	227	2.0 to 3.0	SILTY SAND with GRAVEL(SM)	7.1	NP	NP	NP		
★ 33	228	3.0 to 4.0	SANDY SILT with GRAVEL(ML)	9.0	NP	NP	NP		

Field #	Lab #	% PASSING														% Breakdown			
		100.0	80.0	50.0	25.0	20.0	12.5	10.0	5.0	2.5	1.25	0.630	0.315	0.160	0.080	Gravel	Sand	Silt	Clay
● 30	225	100.0	100.0	100.0	92.9	90.6	89.4	88.5	84.9	81.8	79.2	75.5	71.6	66.0	60.6	15.1	24.3	60.6	
☒ 31	226	100.0	100.0	100.0	97.3	94.5	83.4	78.4	64.0	51.5	40.0	34.0	30.3	25.6	19.9	36.0	44.2	19.9	
▲ 32	227	100.0	100.0	100.0	94.6	92.5	89.5	86.8	79.4	73.6	68.4	64.3	57.8	46.9	38.5	20.6	40.9	38.5	
★ 33	228	100.0	100.0	100.0	94.6	93.3	89.8	87.7	84.1	80.8	78.4	75.0	70.3	61.5	54.7	15.9	29.5	54.7	

Silt	Sand			Gravel	
	Fine	Medium	Coarse	Fine	Coarse



GRAIN SIZE ANALYSIS	Campbell hwy pit testing	SOURCE/TP#: 870-5343
	82.2-82.7 rhs	PROJECT NO: 552-202104-2035-0661-85
CASE 9040B	Coordinates:Z09V N6728046m E488620m	ELEVATION: 740.3m

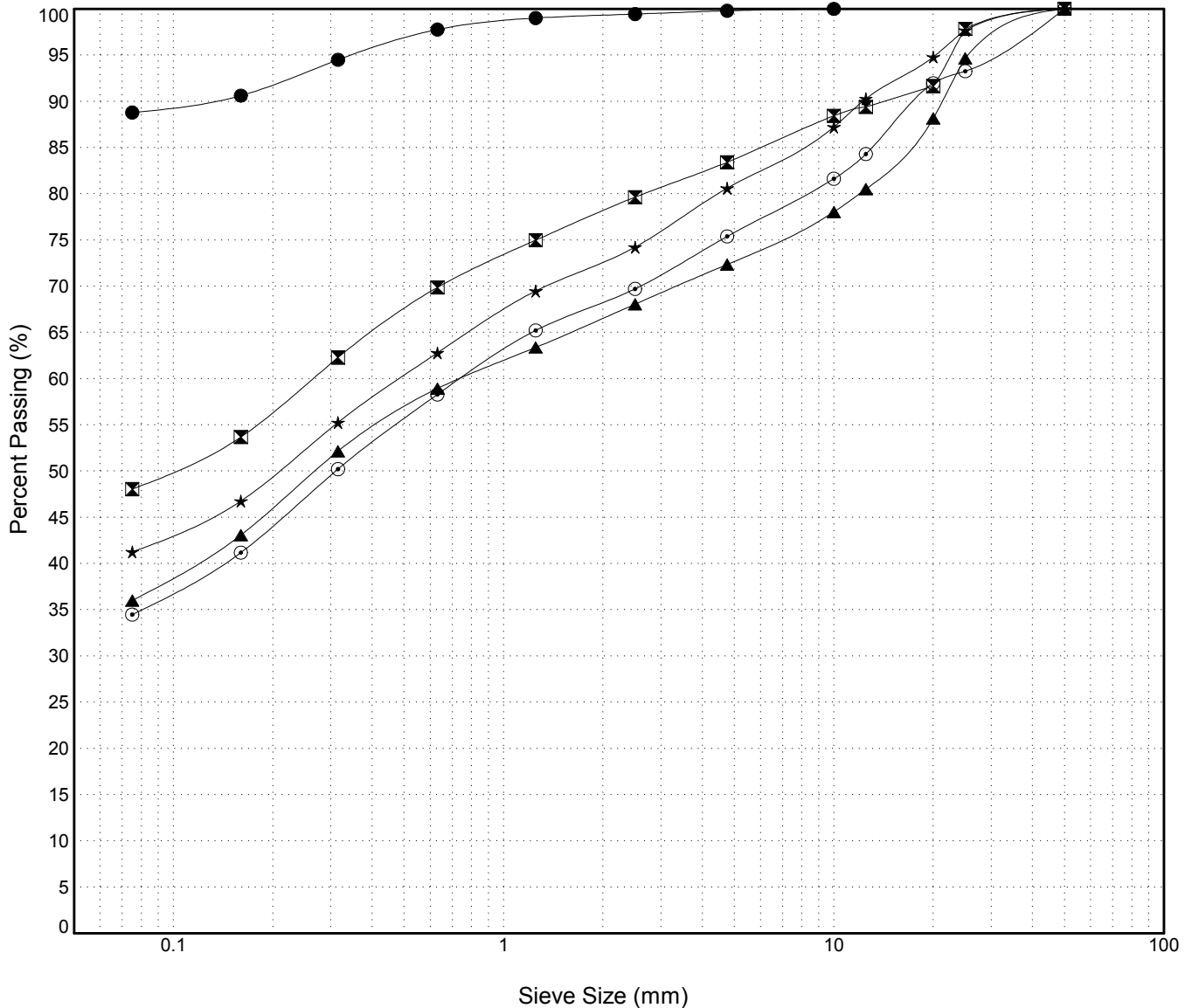
Master Revised July 2013

Field #	Lab #	Depth	Classification	%H2O	LL	PL	PI	Cc	Cu
● 34	229	0.2 to 0.8	SILT(ML)	24.4	NP	NP	NP		
☒ 35	230	0.8 to 1.5	SILTY SAND with GRAVEL(SM)	7.8	NP	NP	NP		
▲ 36	231	1.5 to 2.5	SILTY SAND with GRAVEL(SM)	7.2	NP	NP	NP		
★ 37	232	2.5 to 3.5	SILTY SAND with GRAVEL(SM)	8.9	NP	NP	NP		
⊙ 38	233	3.5 to 4.0	SILTY SAND with GRAVEL(SM)	7.5	NP	NP	NP		

Field #	Lab #	% PASSING														% Breakdown			
		100.0	80.0	50.0	25.0	20.0	12.5	10.0	5.0	2.5	1.25	0.630	0.315	0.160	0.080	Gravel	Sand	Silt	Clay
● 34	229	100.0	100.0	100.0	100.0	100.0	100.0	100.0	99.8	99.4	99.0	97.8	94.5	90.6	88.8	0.2	11.0	88.8	
☒ 35	230	100.0	100.0	100.0	97.8	91.6	89.4	88.4	83.4	79.6	75.0	69.9	62.3	53.7	48.0	16.6	35.4	48.0	
▲ 36	231	100.0	100.0	100.0	94.7	88.2	80.5	78.0	72.3	68.1	63.4	58.9	52.1	43.1	36.0	27.7	36.3	36.0	
★ 37	232	100.0	100.0	100.0	97.7	94.8	90.3	87.2	80.6	74.2	69.5	62.8	55.3	46.8	41.3	19.4	39.3	41.3	
⊙ 38	233	100.0	100.0	100.0	93.3	92.0	84.3	81.6	75.4	69.7	65.2	58.3	50.2	41.2	34.5	24.6	40.9	34.5	

Silt	Sand			Gravel	
	Fine	Medium	Coarse	Fine	Coarse



GRAIN SIZE ANALYSIS	Campbell hwy pit testing	SOURCE/TP#: 870-5344
	82.2-82.7 rhs	PROJECT NO: 552-202104-2035-0661-85
CASE 9040B	Coordinates:Z09V N6728011m E488680m	ELEVATION: 740.3m

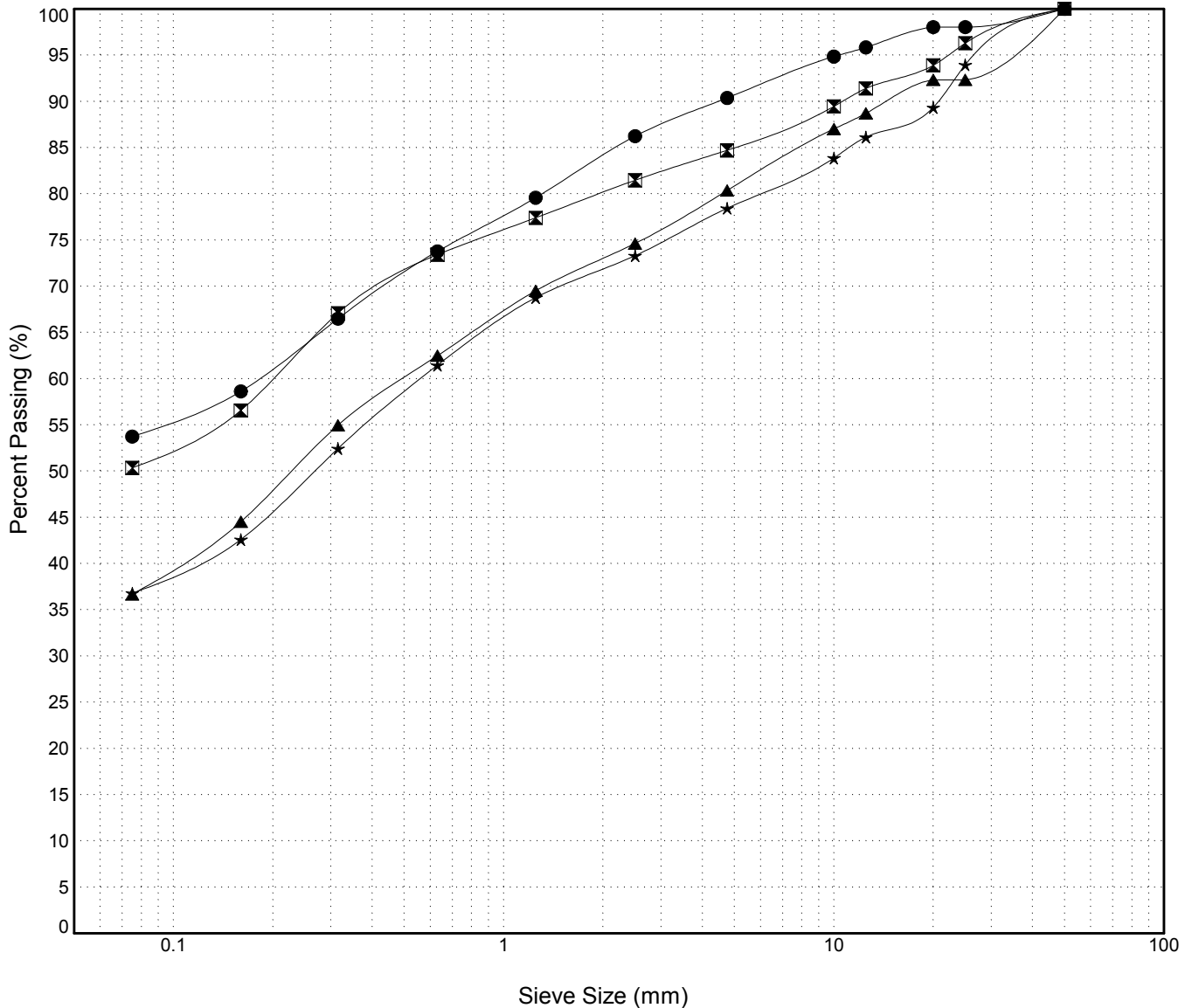
Master Revised July 2013

Field #	Lab #	Depth	Classification	%H2O	LL	PL	PI	Cc	Cu
● 40	349	0.2 to 1.0	SANDY SILT (ML)	14.4	NP	NP	NP		
☒ 41	350	1.0 to 2.0	SANDY SILT with GRAVEL (ML)	9.9	NP	NP	NP		
▲ 42	351	2.0 to 3.0	SILTY SAND with GRAVEL (SM)	8.3	NP	NP	NP		
★ 43	352	3.0 to 4.3	SILTY SAND with GRAVEL (SM)	7.7	NP	NP	NP		

Field #	Lab #	% PASSING													% Breakdown				
		100.0	80.0	50.0	25.0	20.0	12.5	10.0	5.0	2.5	1.25	0.630	0.315	0.160	0.080	Gravel	Sand	Silt	Clay
● 40	349	100.0	100.0	100.0	98.0	98.0	95.8	94.8	90.4	86.2	79.6	73.8	66.5	58.6	53.7	9.6	36.6	53.7	
☒ 41	350	100.0	100.0	100.0	96.3	93.9	91.4	89.5	84.7	81.5	77.4	73.4	67.1	56.6	50.3	15.3	34.4	50.3	
▲ 42	351	100.0	100.0	100.0	92.3	92.3	88.7	87.0	80.4	74.6	69.5	62.5	55.0	44.5	36.7	19.6	43.7	36.7	
★ 43	352	100.0	100.0	100.0	93.9	89.3	86.1	83.9	78.4	73.3	68.8	61.5	52.4	42.6	36.8	21.6	41.6	36.8	

Silt	Sand			Gravel	
	Fine	Medium	Coarse	Fine	Coarse



GRAIN SIZE ANALYSIS	Campbell hwy pit testing	SOURCE/TP#: 870-5345
	82.2-82.7 rhs	PROJECT NO: 552-202104-2035-0661-85
CASE 9040B	Coordinates:Z09V N6727928m E488693m	ELEVATION: 742.2m

Master Revised July 2013

Field #	Lab #	Depth	Classification	%H2O	LL	PL	PI	Cc	Cu
● 44	353	0.3 to 1.0	SANDY SILT(ML)	13.4	NP	NP	NP		
☒ 45	354	1.0 to 2.0	SANDY SILT(ML)	13.0	NP	NP	NP		
▲ 46	355	2.0 to 3.0	SILTY SAND(SM)	11.2	NP	NP	NP		
★ 47	356	3.0 to 4.3	SILTY SAND with GRAVEL(SM)	10.8	NP	NP	NP		

Field #	Lab #	% PASSING														% Breakdown			
		100.0	80.0	50.0	25.0	20.0	12.5	10.0	5.0	2.5	1.25	0.630	0.315	0.160	0.080	Gravel	Sand	Silt	Clay
● 44	353	100.0	100.0	100.0	95.0	94.0	92.5	91.3	87.6	84.3	80.5	76.8	71.4	64.5	60.0	12.4	27.6	60.0	
☒ 45	354	100.0	100.0	100.0	97.1	96.2	93.2	91.6	87.5	84.9	81.7	78.5	73.5	64.5	56.4	12.5	31.1	56.4	
▲ 46	355	100.0	100.0	100.0	100.0	100.0	95.6	92.1	85.2	79.4	75.0	69.4	63.4	54.7	46.6	14.8	38.6	46.6	
★ 47	356	100.0	100.0	100.0	96.2	89.1	83.1	79.7	73.1	68.5	65.1	60.7	55.9	48.4	41.3	26.9	31.8	41.3	

Silt	Sand			Gravel	
	Fine	Medium	Coarse	Fine	Coarse

