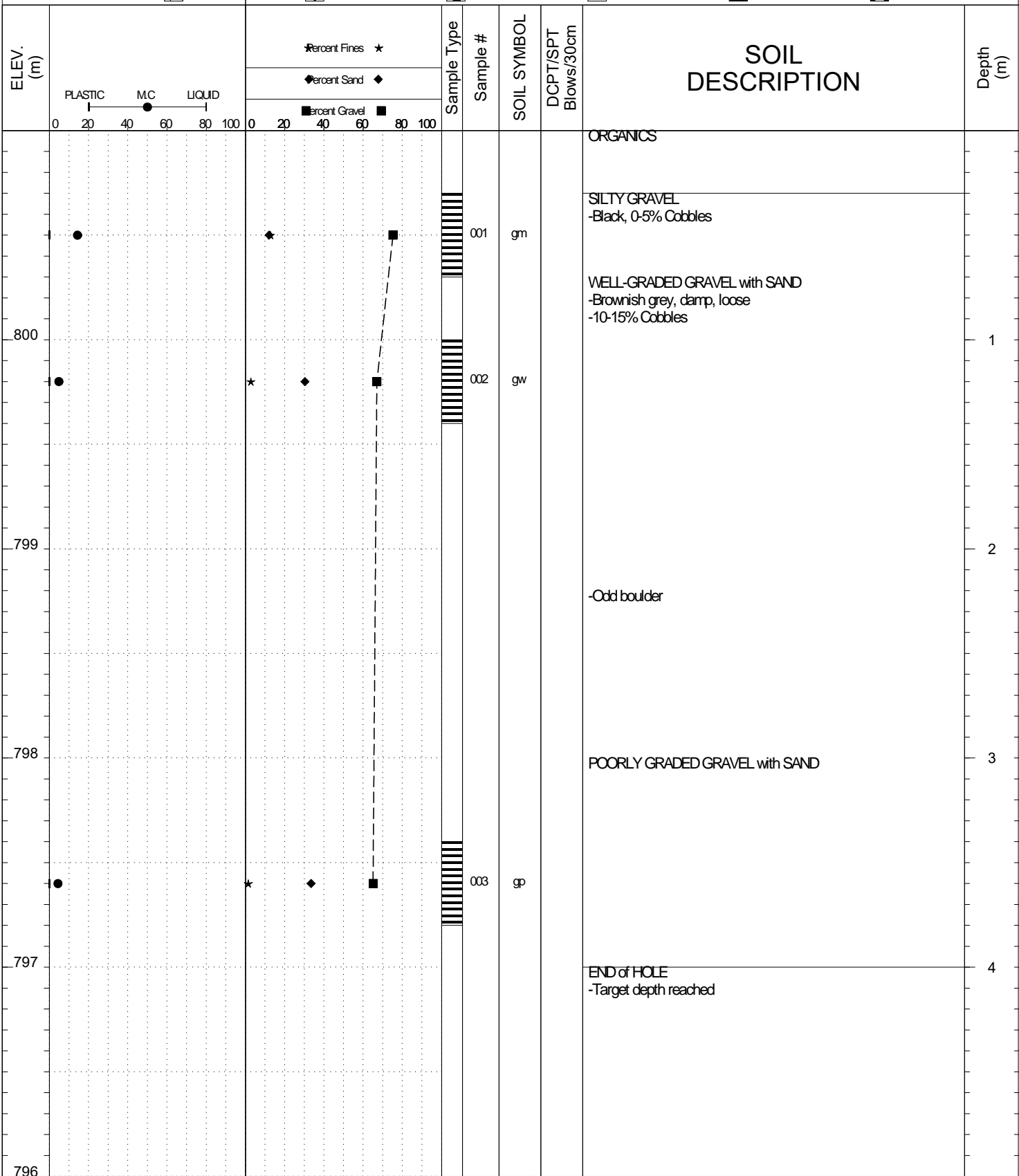
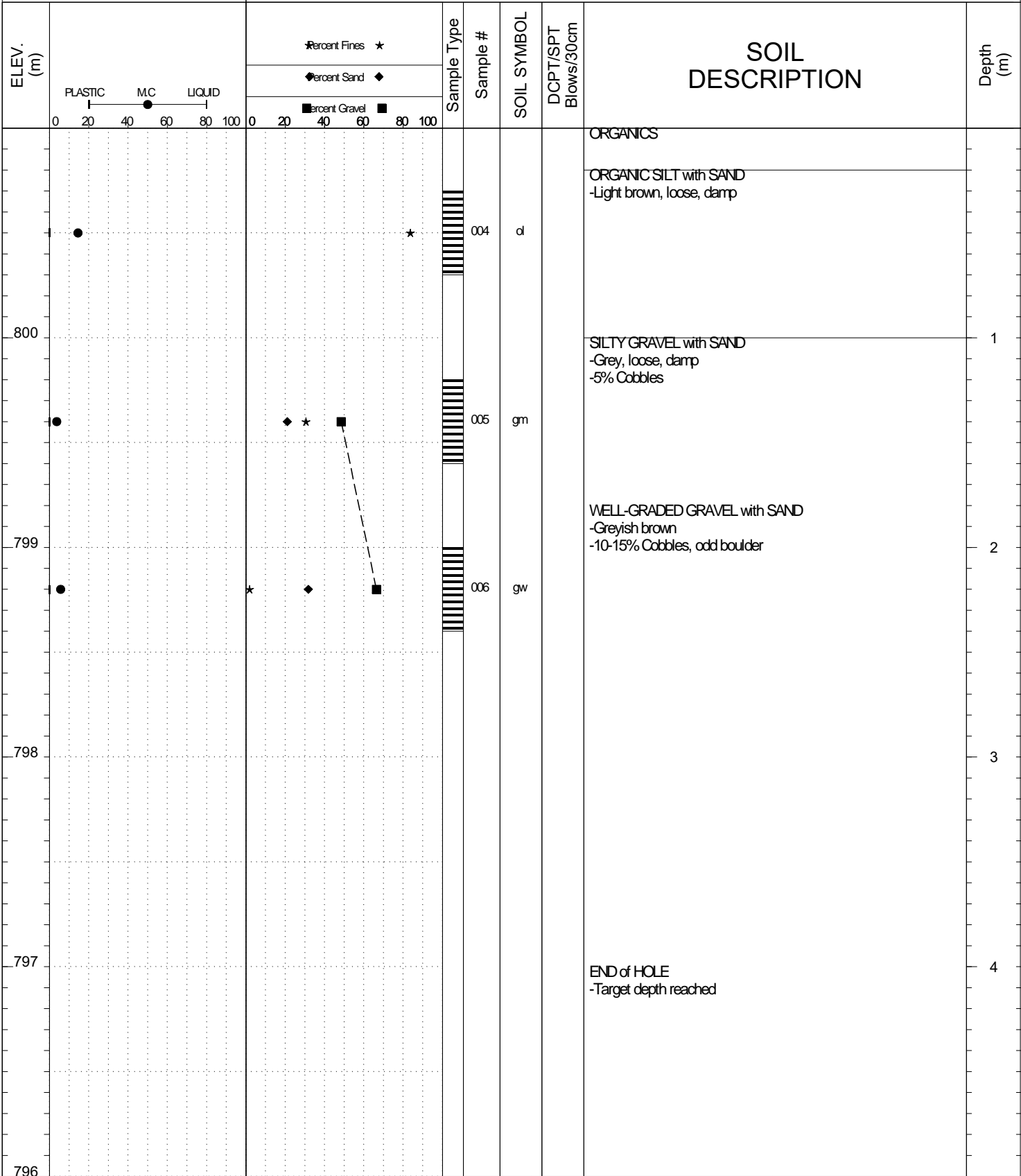


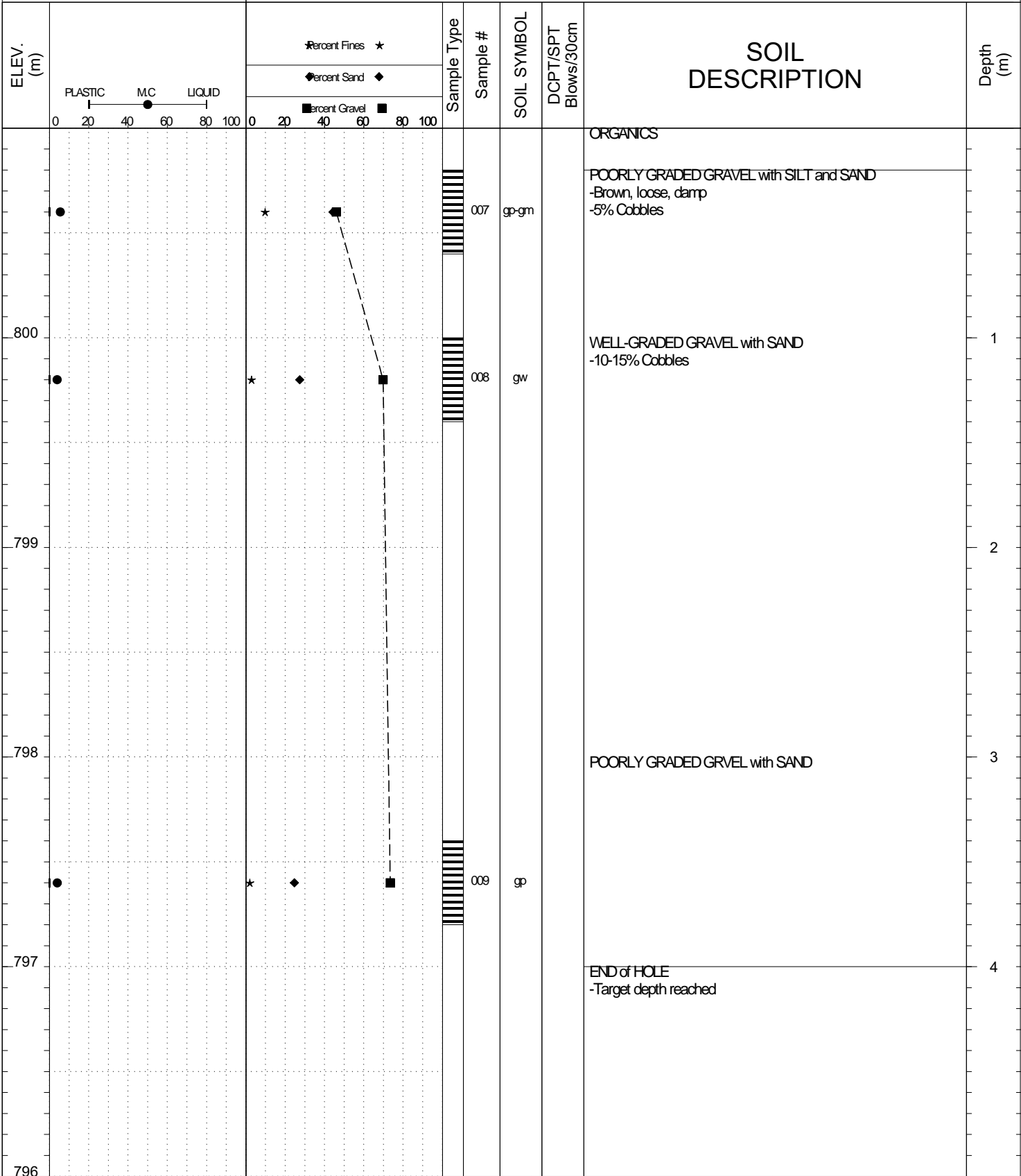
SUBSURFACE EXPLORATION AND TEST REPORT		Kondike Highway	SOURCE/TP#: 877-5400
Bonanza Sales		Dawson City Aerodrome, km 698 RHS	PROJECT NO:
Komatsu 300PC		Coordinates: Z07W N7103074.3m E591593.5m	ELEVATION: 801m
SAMPLE TYPE	<input type="checkbox"/> UNDISTURBED	<input type="checkbox"/> DCPT	<input type="checkbox"/> AUGER
			<input type="checkbox"/> BULK
			<input checked="" type="checkbox"/> SPT
			<input type="checkbox"/> CORE



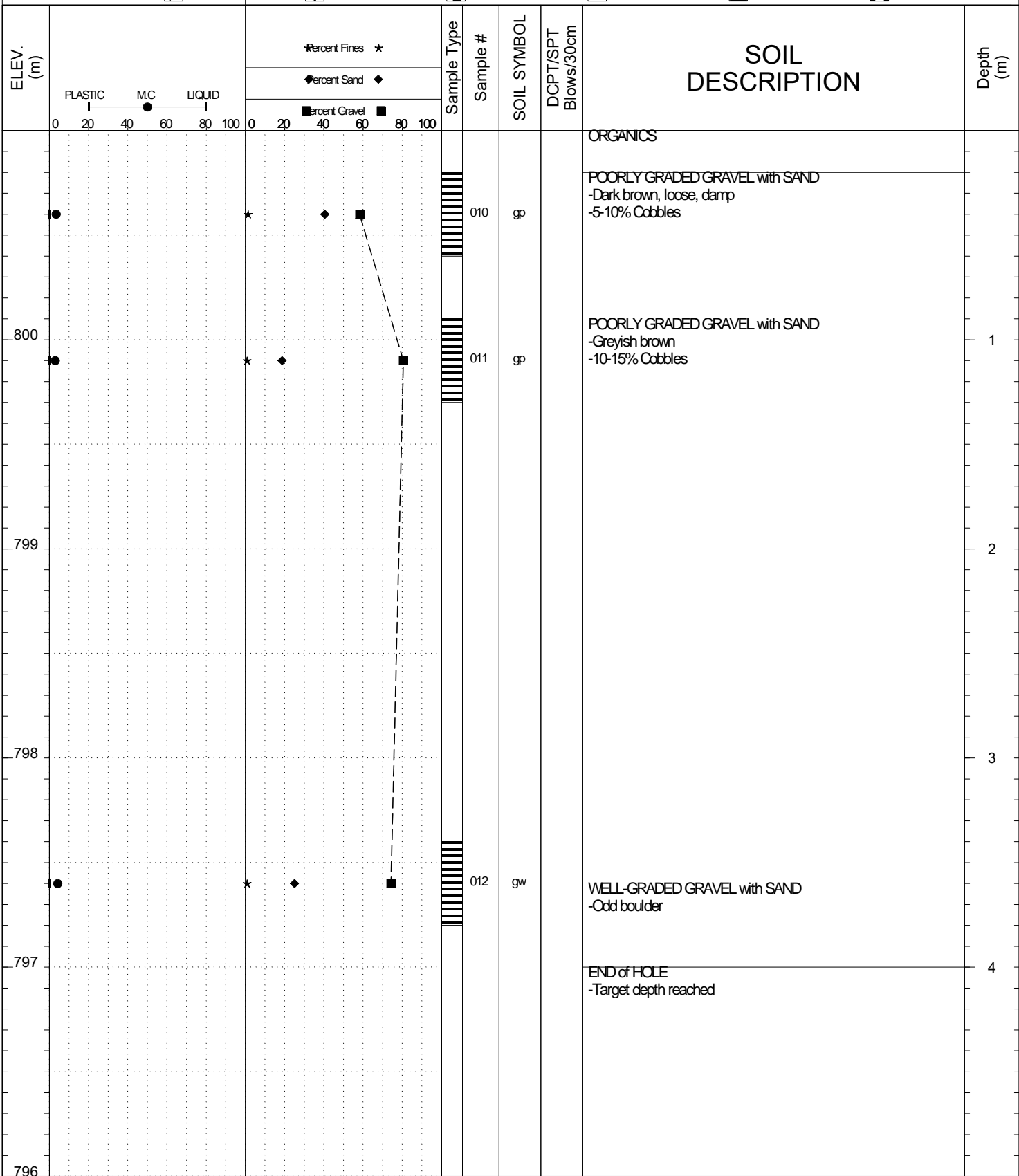
SUBSURFACE EXPLORATION AND TEST REPORT		Kondike Highway	SOURCE/TP#: 877-5402
Bonanza Sales		Dawson City Aerodrome, km 698 RHS	PROJECT NO:
Komatsu 300PC		Coordinates: Z07W N7103249.1m E591785.3m	ELEVATION: 801m
SAMPLE TYPE	<input type="checkbox"/> UNDISTURBED	<input type="checkbox"/> DCPT	<input type="checkbox"/> AUGER
			<input checked="" type="checkbox"/> BULK
			<input checked="" type="checkbox"/> SPT
			<input type="checkbox"/> CORE



SUBSURFACE EXPLORATION AND TEST REPORT		Kondike Highway	SOURCE/TP#: 877-5403
Bonanza Sales		Dawson City Aerodrome, km 698 RHS	PROJECT NO:
Komatsu 300PC		Coordinates: Z07WN7103266.5m E591711.4m	ELEVATION: 801m
SAMPLE TYPE	<input type="checkbox"/> UNDISTURBED	<input type="checkbox"/> DCPT	<input checked="" type="checkbox"/> AUGER
			<input checked="" type="checkbox"/> BULK
			<input checked="" type="checkbox"/> SPT
			<input type="checkbox"/> CORE



SUBSURFACE EXPLORATION AND TEST REPORT		Kondike Highway	SOURCE/TP#: 877-5404
Bonanza Sales		Dawson City Aerodrome, km 698 RHS	PROJECT NO:
Komatsu 300PC		Coordinates: Z07W N7103327.3m E591934.3m	ELEVATION: 801m
SAMPLE TYPE	<input type="checkbox"/> UNDISTURBED	<input type="checkbox"/> DCPT	<input type="checkbox"/> AUGER
			<input type="checkbox"/> BULK
			<input checked="" type="checkbox"/> SPT
			<input type="checkbox"/> CORE

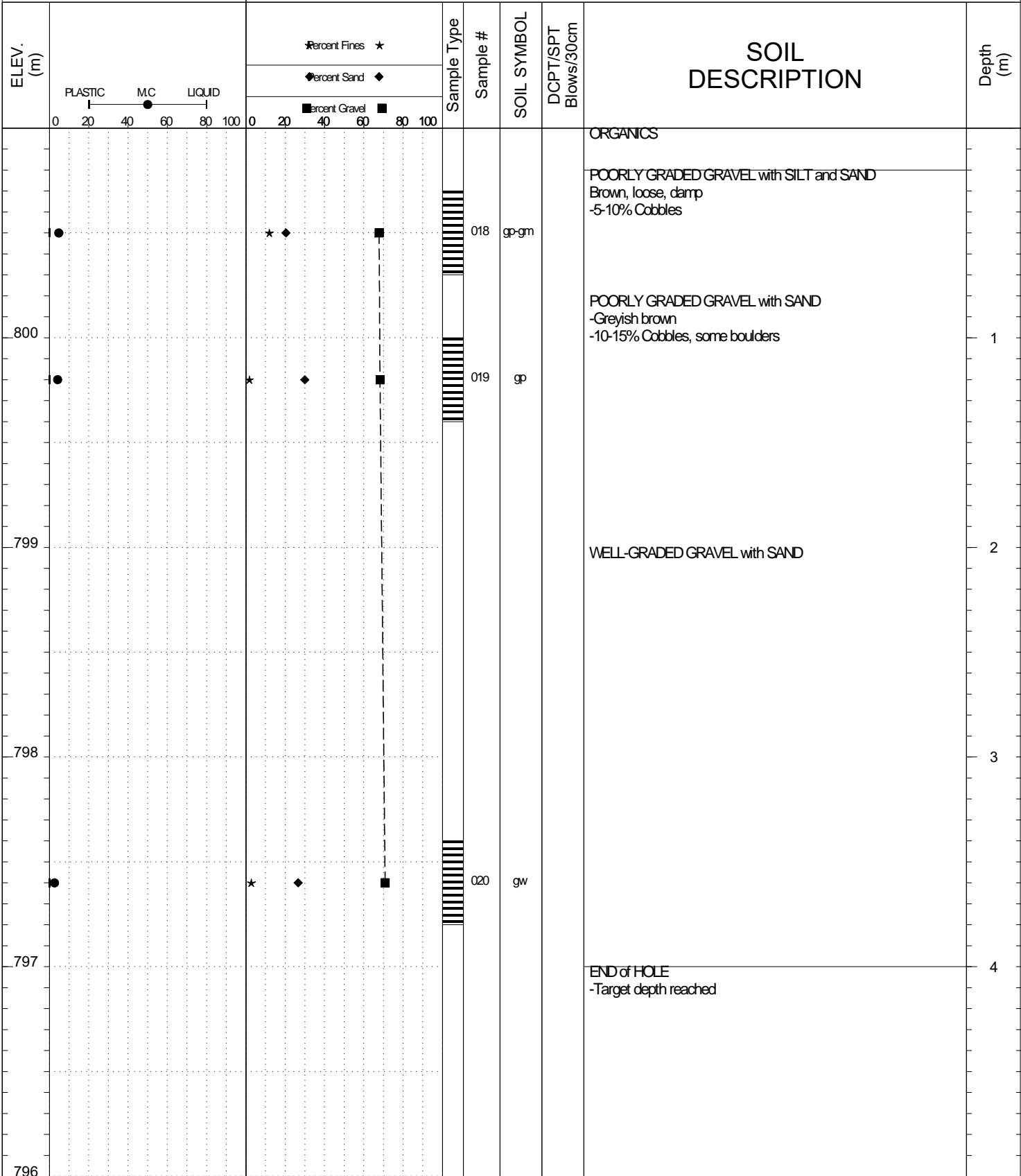


SUBSURFACE EXPLORATION AND TEST REPORT		Kondike Highway		SOURCE/TP#: 877-5405	
Bonanza Sales		Dawson City Aerodrome, km 698 RHS		PROJECT NO:	
Komatsu 300PC		Coordinates: Z07WN7103316.5m E591873.4m		ELEVATION: 801m	
SAMPLE TYPE		<input type="checkbox"/> UNDISTURBED <input type="checkbox"/> DCPT <input checked="" type="checkbox"/> AUGER <input type="checkbox"/> BULK <input checked="" type="checkbox"/> SPT <input type="checkbox"/> CORE			
ELEV. (m)	PLASTIC MC LIQUID 0 20 40 60 80 100		Percent Fines ★ Percent Sand ◆ Percent Gravel ■		SOIL DESCRIPTION
	0 20 40 60 80 100		Sample Type Sample # SOIL SYMBOL DCPT/SPT Blows/30cm		
800	● ◆ ★ ■		013 ml		ORGANICS
799	● ◆ ★ ■		014 gw-gm		WELL-GRADED GRAVEL with SILT and SAND -Brown, frozen -5-10% Cobbles, hard digging
798					END of HOLE -Refusal, frozen
797					
796					
				Depth (m)	
				1	
				2	
				3	
				4	

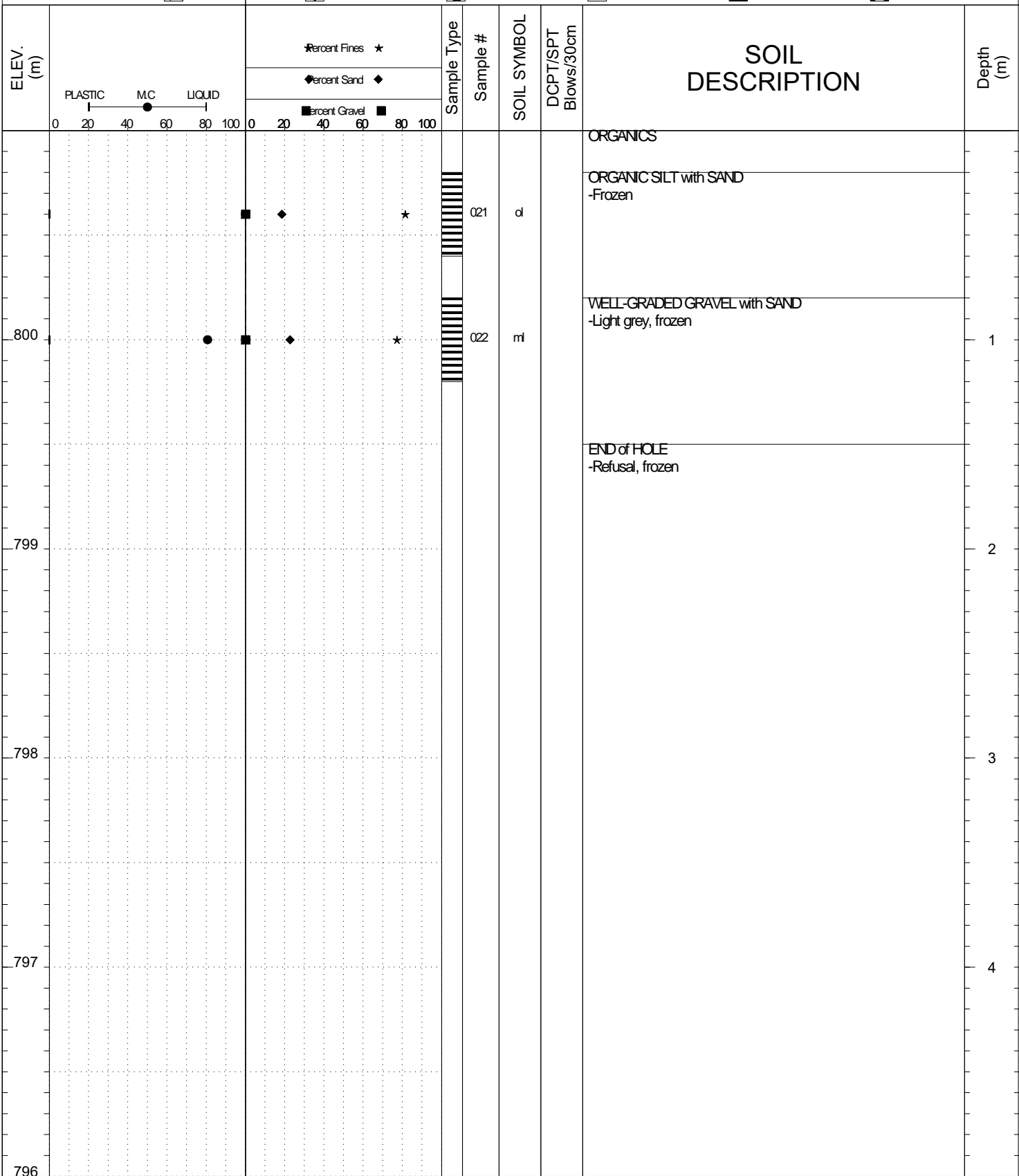
SUBSURFACE EXPLORATION AND TEST REPORT		Kondike Highway		SOURCE/TP#: 877-5407				
Bonanza Sales		Dawson City Aerodrome, km 698 RHS		PROJECT NO:				
Komatsu 300PC		Coordinates: Z07W N7103256.9m E591862.2m		ELEVATION: 801m				
SAMPLE TYPE		<input type="checkbox"/> UNDISTURBED <input type="checkbox"/> DCPT <input checked="" type="checkbox"/> AUGER <input type="checkbox"/> BULK <input checked="" type="checkbox"/> SPT <input type="checkbox"/> CORE						
ELEV. (m)	<div style="display: flex; justify-content: space-between;"> <div style="width: 45%;"> <p>PLASTIC MC LIQUID</p> <p>0 20 40 60 80 100</p> </div> <div style="width: 45%;"> <p>Percent Fines *</p> <p>Percent Sand ◆</p> <p>Percent Gravel ■</p> <p>0 20 40 60 80 100</p> </div> </div>		Sample Type	Sample #	SOIL SYMBOL	DCPT/SPT Blows/30cm	SOIL DESCRIPTION	Depth (m)
801			ml	015	ml	ORGANICS		
800			gw	016	gw	SANDY SILT with GRAVEL -Brown, loose, damp -10-15% Cobbles	1	
799						WELL-GRADED GRAVEL with SAND -Brown, loose, damp -10-15% Cobbles, odd boulder	2	
798							3	
797			gw	017	gw		4	
796						END of HOLE -Target depth reached		



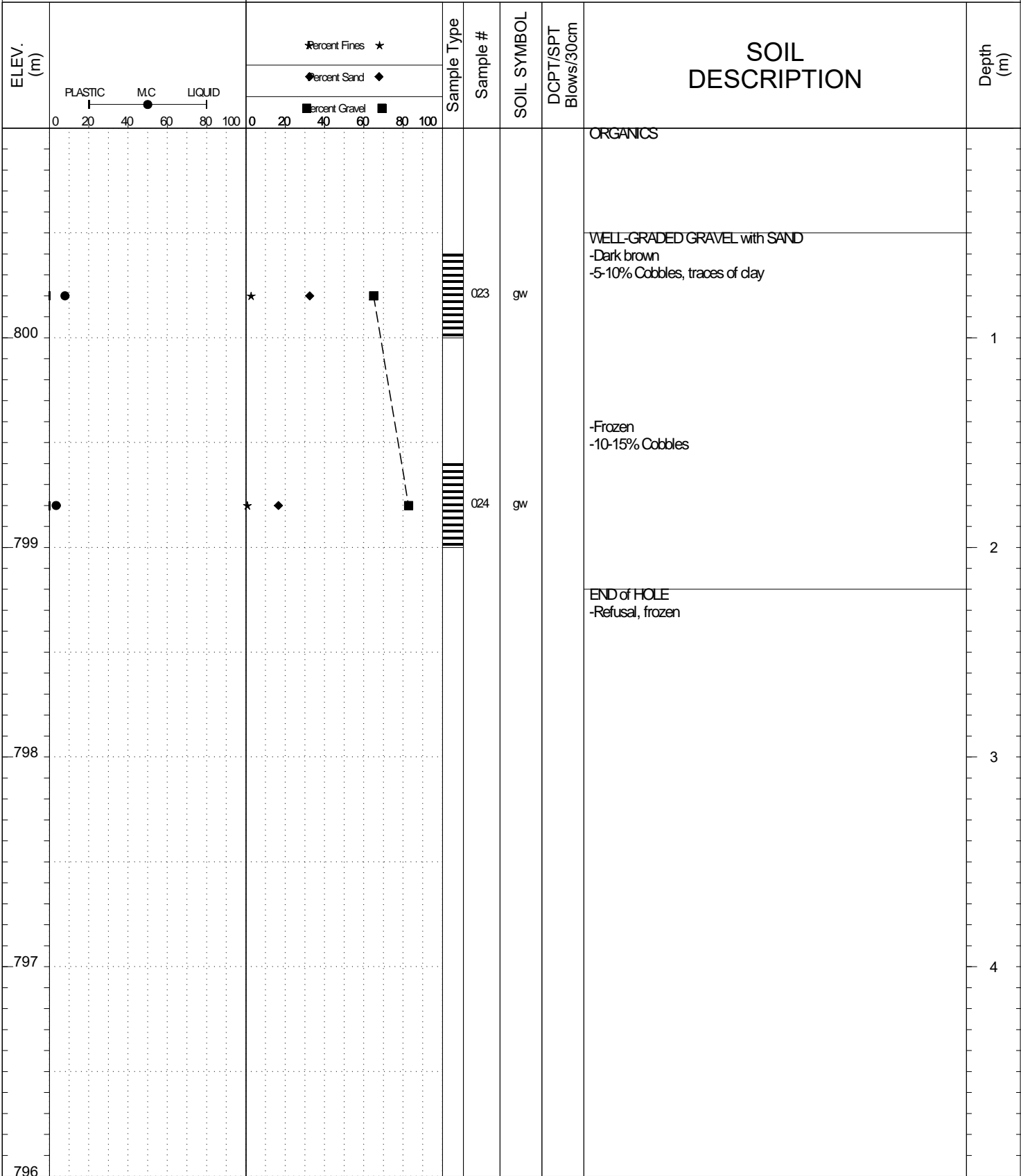
SUBSURFACE EXPLORATION AND TEST REPORT		Kondike Highway	SOURCE/TP#: 877-5408
Bonanza Sales		Dawson City Aerodrome, km 698 RHS	PROJECT NO:
Komatsu 300PC		Coordinates: Z07W N7103414.7m E591876.9m	ELEVATION: 801m
SAMPLE TYPE	<input type="checkbox"/> UNDISTURBED	<input type="checkbox"/> DCPT	<input checked="" type="checkbox"/> AUGER
			<input type="checkbox"/> BULK
			<input checked="" type="checkbox"/> SPT
			<input type="checkbox"/> CORE



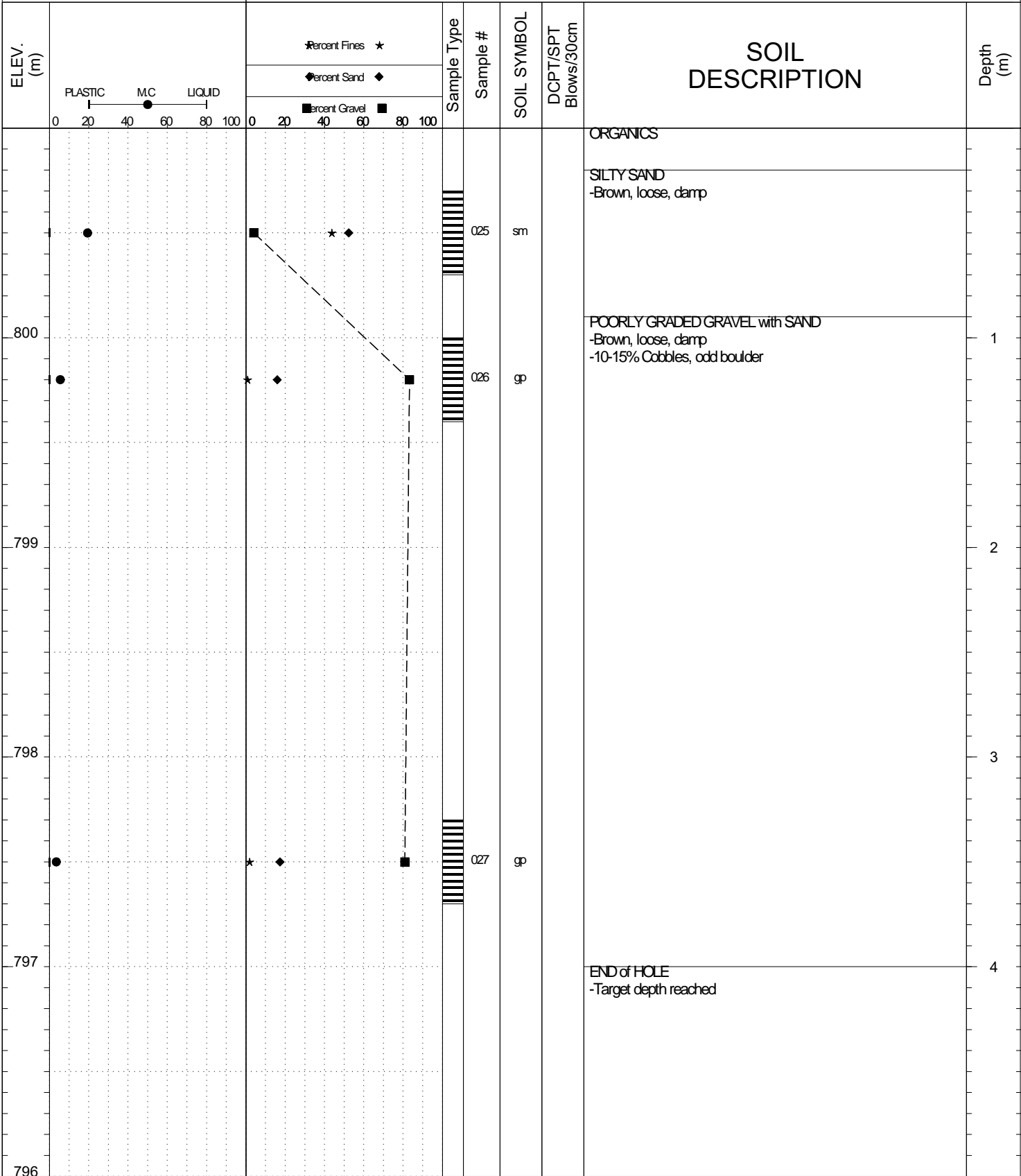
SUBSURFACE EXPLORATION AND TEST REPORT		Kondike Highway	SOURCE/TP#: 877-5409
Bonanza Sales		Dawson City Aerodrome, km 698 RHS	PROJECT NO:
Komatsu 300PC		Coordinates: Z07W N7103530.3m E592167.2m	ELEVATION: 801m
SAMPLE TYPE	<input type="checkbox"/> UNDISTURBED	<input type="checkbox"/> DCPT	<input checked="" type="checkbox"/> AUGER
			<input checked="" type="checkbox"/> BULK
			<input checked="" type="checkbox"/> SPT
			<input type="checkbox"/> CORE



SUBSURFACE EXPLORATION AND TEST REPORT		Kondike Highway	SOURCE/TP#: 877-5410
Bonanza Sales		Dawson City Aerodrome, km 698 RHS	PROJECT NO:
Komatsu 300PC		Coordinates: Z07W N7103602m E592214.6m	ELEVATION: 801m
SAMPLE TYPE	<input type="checkbox"/> UNDISTURBED	<input type="checkbox"/> DCPT	<input type="checkbox"/> AUGER
			<input type="checkbox"/> BULK
			<input checked="" type="checkbox"/> SPT
			<input type="checkbox"/> CORE



SUBSURFACE EXPLORATION AND TEST REPORT		Kondike Highway	SOURCE/TP#: 877-5411
Bonanza Sales		Dawson City Aerodrome, km 698 RHS	PROJECT NO:
Komatsu 300PC		Coordinates: Z07W N7103668.8m E592212.1m	ELEVATION: 801m
SAMPLE TYPE	<input type="checkbox"/> UNDISTURBED	<input type="checkbox"/> DCPT	<input checked="" type="checkbox"/> AUGER
			<input checked="" type="checkbox"/> BULK
			<input checked="" type="checkbox"/> SPT
			<input type="checkbox"/> CORE



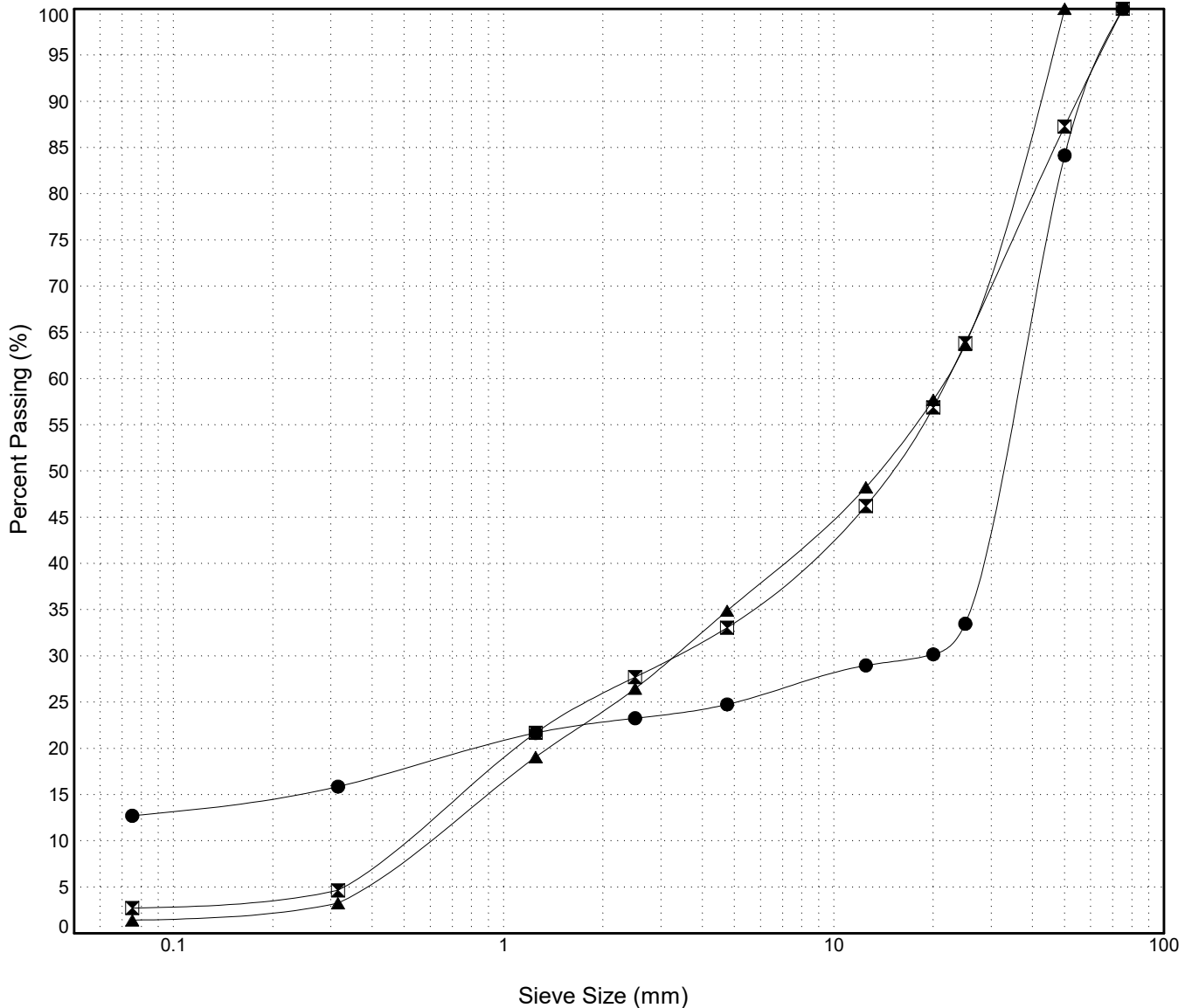
GRAIN SIZE ANALYSIS	Dawson City Aerodrome	SOURCE/TP#: 877-5400
Bonanza Sales	km 698 RHS	PROJECT NO:
Komatsu 300PC	Coordinates:Z07W N7103074.3m E591593.5m	ELEVATION: 801m

Master Revised July 2013

Field #	Lab #	Depth	Classification	%H2O	LL	PL	PI	Cc	Cu
● 001	2015-300	0.3 to 0.7	SILTY GRAVEL(GM)	14.3	NP	NP	NP		
☒ 002	2015-301	1.0 to 1.4	WELL-GRADED GRAVEL with SAND(GW)	4.8	NP	NP	NP	1.0	45.5
▲ 003	2015-302	3.4 to 3.8	POORLY GRADED GRAVEL with SAND(GP)	4.4	NP	NP	NP	0.9	38.4

Field #	Lab #	% PASSING	Sieve Size (mm)													% Breakdown				
			100.0	80.0	50.0	25.0	20.0	12.5	10.0	5.0	2.5	1.25	0.630	0.315	0.160	0.080	Gravel	Sand	Silt	Clay
● 001	2015-300	100.0	100.0	100.0	84.1	33.5	30.2	29.0	28.0	24.8	23.3	21.7	18.8	15.9	14.4	12.7	75.2	12.0	12.7	
☒ 002	2015-301	100.0	100.0	87.3	63.8	56.9	46.2	43.2	33.1	27.7	21.7	13.2	4.6	3.7	2.7	66.9	30.3	2.7		
▲ 003	2015-302	100.0	100.0	100.0	63.7	57.7	48.2	45.2	34.9	26.5	19.1	11.2	3.3	2.4	1.4	65.1	33.5	1.4		

Silt	Sand			Gravel	
	Fine	Medium	Coarse	Fine	Coarse



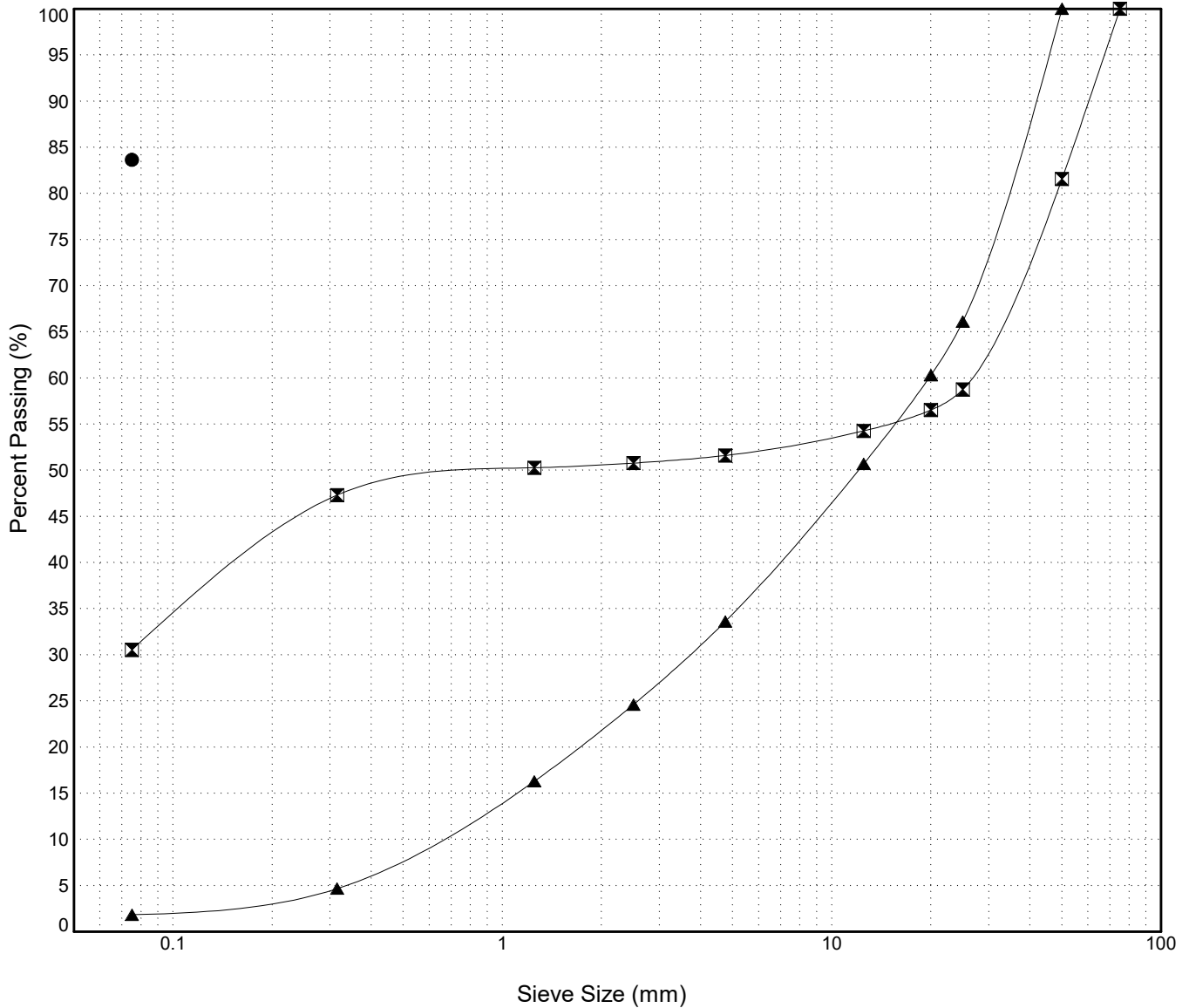
GRAIN SIZE ANALYSIS	Dawson City Aerodrome	SOURCE/TP#: 877-5402
Bonanza Sales	km 698 RHS	PROJECT NO:
Komatsu 300PC	Coordinates:Z07W N7103249.1m E591785.3m	ELEVATION: 801m

Master Revised July 2013

Field #	Lab #	Depth	Classification	%H2O	LL	PL	PI	Cc	Cu
● 004	2015-303	0.3 to 0.7	ORGANIC SILT with SAND(OL)	14.5	NP	NP	NP		
☒ 005	2015-304	1.2 to 1.6	SILTY GRAVEL with SAND(GM)	3.7	NP	NP	NP		
▲ 006	2015-305	2.0 to 2.4	WELL-GRADED GRAVEL with SAND(GW)	5.7	NP	NP	NP	1.2	33.2

Field #	Lab #	% PASSING	100.0	80.0	50.0	25.0	20.0	12.5	10.0	5.0	2.5	1.25	0.630	0.315	0.160	0.080	% Breakdown			
			Gravel	Sand	Silt	Clay														
● 004	2015-303	100.0	100.0	100.0	100.0	100.0	100.0	100.0	100.0	100.0	100.0	100.0	100.0	100.0	100.0	83.6				83.6
☒ 005	2015-304	100.0	100.0	81.6	58.7	56.5	54.3	53.7	51.6	50.8	50.3	48.8	47.3	39.4	30.5	48.4	21.1			30.5
▲ 006	2015-305	100.0	100.0	100.0	66.1	60.3	50.7	46.8	33.6	24.6	16.3	10.5	4.7	3.3	1.8	66.4	31.8			1.8

Silt	Sand			Gravel	
	Fine	Medium	Coarse	Fine	Coarse



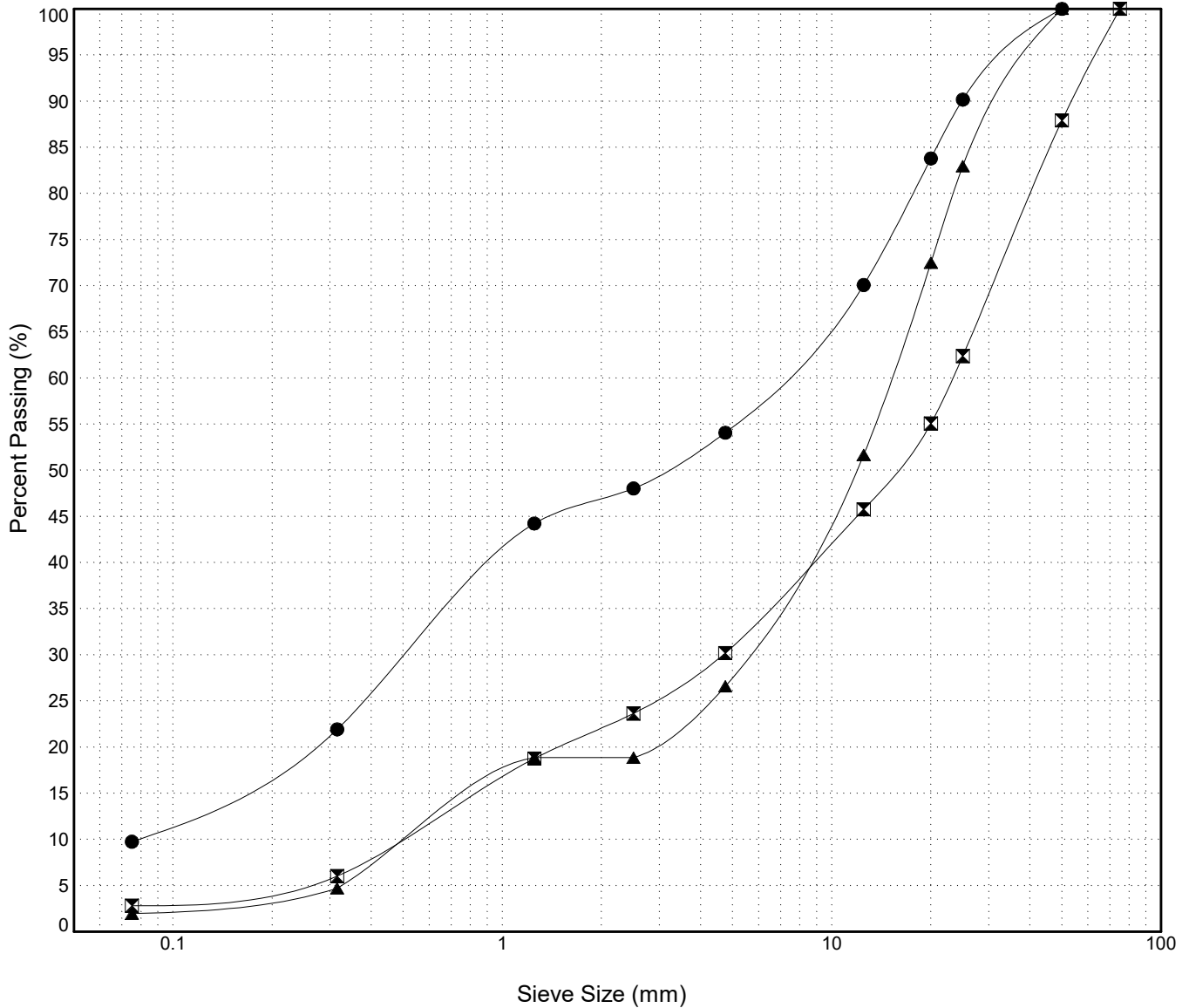
GRAIN SIZE ANALYSIS	Dawson City Aerodrome	SOURCE/TP#: 877-5403
Bonanza Sales	km 698 RHS	PROJECT NO:
Komatsu 300PC	Coordinates:Z07W N7103266.5m E591711.4m	ELEVATION: 801m

Master Revised July 2013

Field #	Lab #	Depth	Classification	%H2O	LL	PL	PI	Cc	Cu
● 007	2015-306	0.2 to 0.6	POORLY GRADED GRAVEL with SILT and SAND(GP-GM)	5.5	NP	NP	NP	0.5	88.0
☒ 008	2015-307	1.0 to 1.4	WELL-GRADED GRAVEL with SAND(GW)	3.9	NP	NP	NP	1.9	48.0
▲ 009	2015-308	3.4 to 3.8	POORLY GRADED GRAVEL with SAND(GP)	3.9	NP	NP	NP	3.7	28.6

Field #	Lab #	% PASSING	Sieve Size (mm)													% Breakdown			
			100.0	80.0	50.0	25.0	20.0	12.5	10.0	5.0	2.5	1.25	0.630	0.315	0.160	0.080	Gravel	Sand	Silt
● 007	2015-306	100.0	100.0	100.0	90.2	83.8	70.1	66.4	54.1	48.0	44.2	33.1	21.9	16.2	9.7	45.9	44.3	9.7	
☒ 008	2015-307	100.0	100.0	87.9	62.4	55.1	45.8	42.2	30.2	23.6	18.8	12.4	6.0	4.5	2.8	69.8	27.4	2.8	
▲ 009	2015-308	100.0	100.0	100.0	83.0	72.5	51.7	45.9	26.6	18.9	18.9	11.8	4.7	3.4	2.0	73.4	24.6	2.0	

Silt	Sand			Gravel	
	Fine	Medium	Coarse	Fine	Coarse



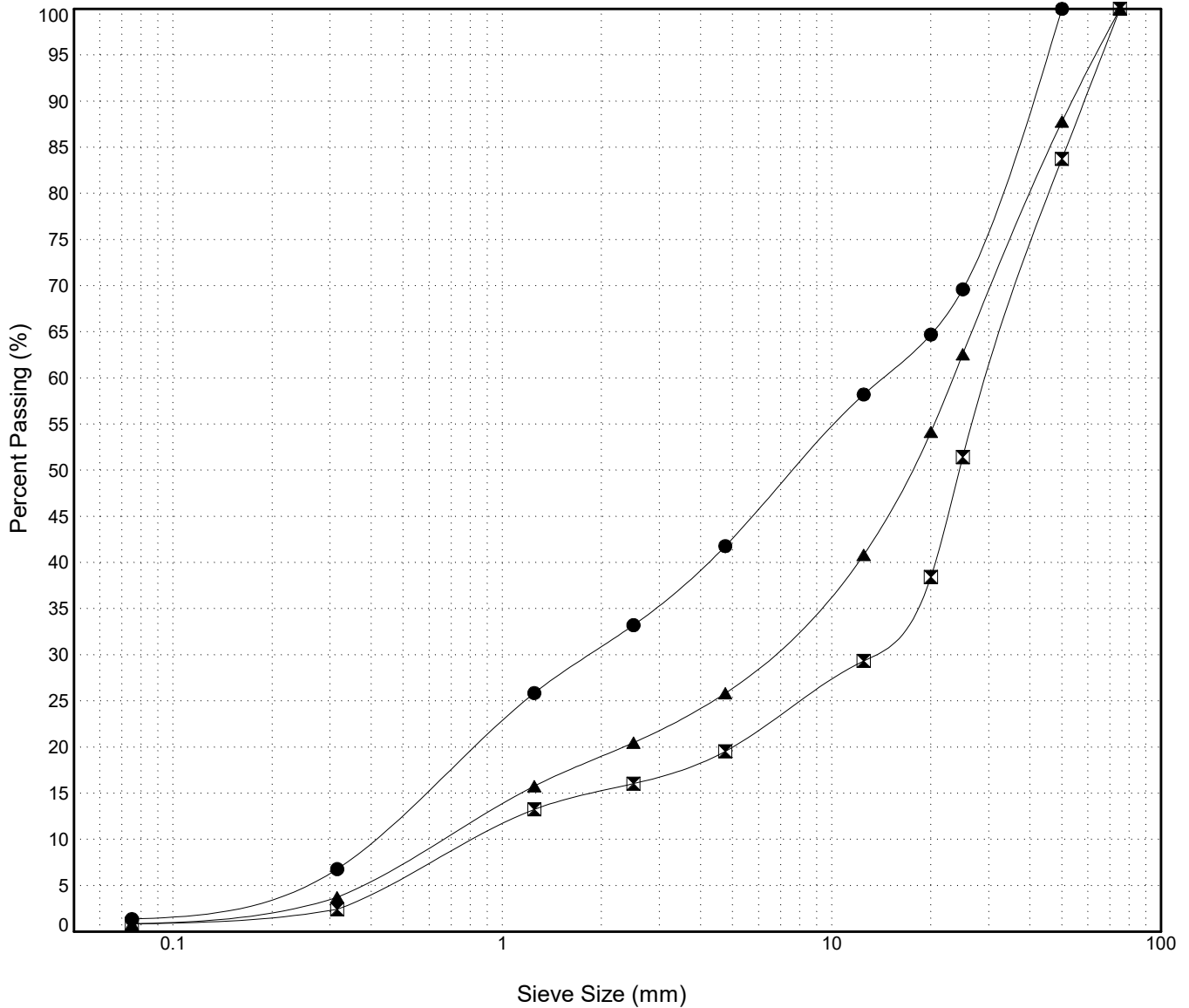
GRAIN SIZE ANALYSIS	Dawson City Aerodrome	SOURCE/TP#: 877-5404
Bonanza Sales	km 698 RHS	PROJECT NO:
Komatsu 300PC	Coordinates:Z07W N7103327.3m E591934.3m	ELEVATION: 801m

Master Revised July 2013

Field #	Lab #	Depth	Classification	%H2O	LL	PL	PI	Cc	Cu
● 010	2015-309	0.2 to 0.6	POORLY GRADED GRAVEL with SAND(GP)	3.4	NP	NP	NP	0.6	35.8
☒ 011	2015-310	0.9 to 1.3	POORLY GRADED GRAVEL with SAND(GP)	3.0	NP	NP	NP	6.7	36.4
▲ 012	2015-311	3.4 to 3.8	WELL-GRADED GRAVEL with SAND(GW)	4.3	NP	NP	NP	2.6	36.2

Field #	Lab #	% PASSING	Sieve Size (mm)													% Breakdown			
			100.0	80.0	50.0	25.0	20.0	12.5	10.0	5.0	2.5	1.25	0.630	0.315	0.160	0.080	Gravel	Sand	Silt
● 010	2015-309	100.0	100.0	100.0	69.6	64.7	58.2	54.4	41.8	33.2	25.9	16.4	6.8	4.2	1.4	58.2	40.4	1.4	
☒ 011	2015-310	100.0	100.0	83.7	51.4	38.4	29.3	27.1	19.5	16.0	13.2	7.9	2.4	1.7	0.8	80.5	18.7	0.8	
▲ 012	2015-311	100.0	100.0	87.8	62.6	54.2	40.8	37.4	25.8	20.5	15.8	9.8	3.7	2.4	0.8	74.2	25.0	0.8	

Silt	Sand			Gravel	
	Fine	Medium	Coarse	Fine	Coarse



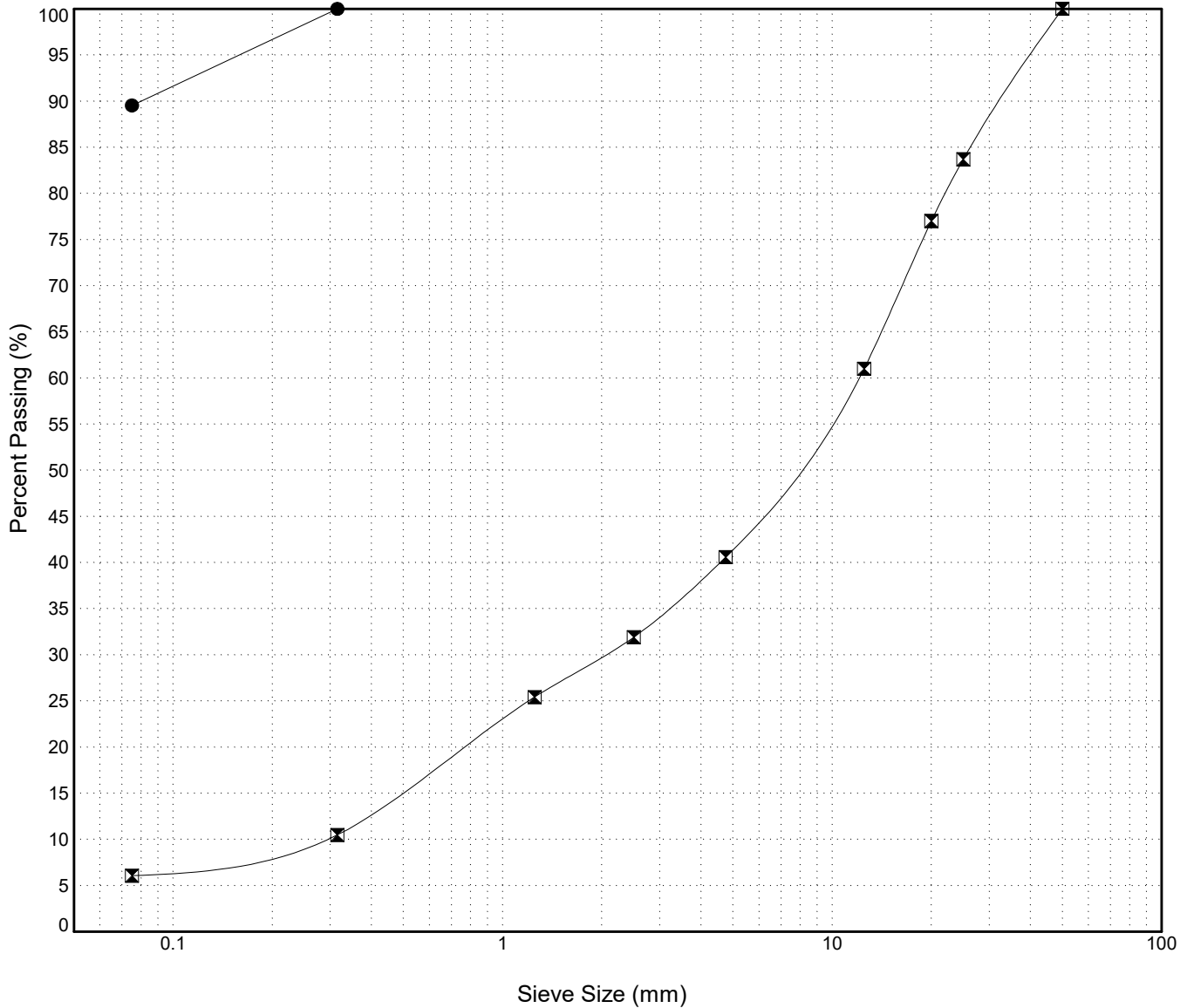
GRAIN SIZE ANALYSIS	Dawson City Aerodrome	SOURCE/TP#: 877-5405
Bonanza Sales	km 698 RHS	PROJECT NO:
Komatsu 300PC	Coordinates:Z07W N7103316.5m E591873.4m	ELEVATION: 801m

Master Revised July 2013

Field #	Lab #	Depth	Classification	%H2O	LL	PL	PI	Cc	Cu
● 013	2015-312	0.3 to 0.7	SILT(ML)	62.6	NP	NP	NP		
☒ 014	2015-313	1.2 to 1.6	WELL-GRADED GRAVEL with SILT and SAND(GW-GM)	7.9	NP	NP	NP	1.3	44.3
Field #	Lab #								
● 013	2015-312								
☒ 014	2015-313								

Field #	Lab #	% PASSING														% Breakdown					
			100.0	80.0	50.0	25.0	20.0	12.5	10.0	5.0	2.5	1.25	0.630	0.315	0.160	0.080	Gravel	Sand	Silt	Clay	
● 013	2015-312	100.0	100.0	100.0	100.0	100.0	100.0	100.0	100.0	100.0	100.0	100.0	100.0	100.0	100.0	100.0	95.1	89.5	0.0	10.5	89.5
☒ 014	2015-313	100.0	100.0	100.0	83.7	77.0	61.0	56.3	40.6	31.9	25.4	18.0	10.5	8.4	6.1		59.4	34.5	6.1		

Silt	Sand			Gravel	
	Fine	Medium	Coarse	Fine	Coarse



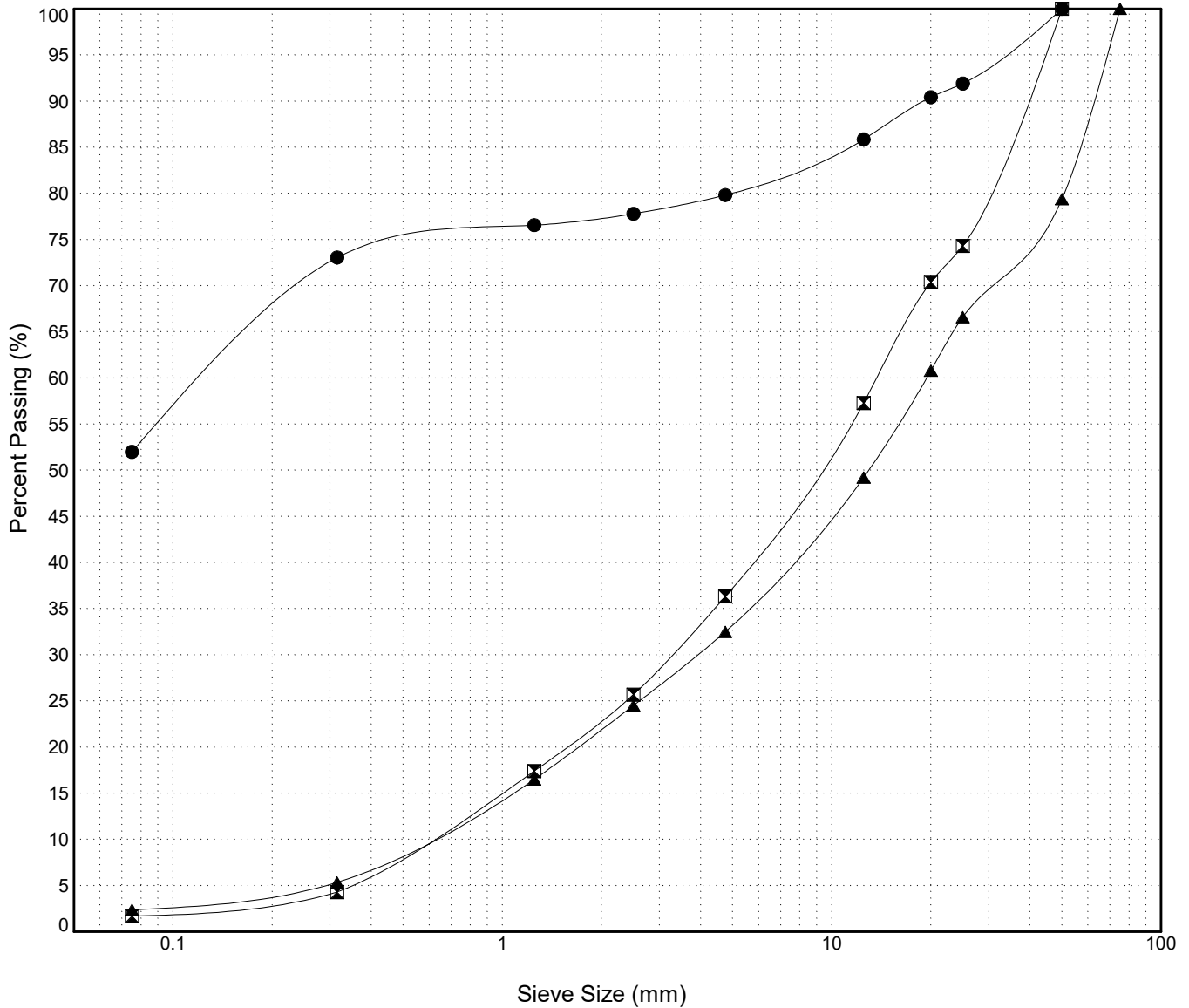
GRAIN SIZE ANALYSIS	Dawson City Aerodrome	SOURCE/TP#: 877-5407
Bonanza Sales	km 698 RHS	PROJECT NO:
Komatsu 300PC	Coordinates:Z07W N7103256.9m E591862.2m	ELEVATION: 801m

Master Revised July 2013

Field #	Lab #	Depth	Classification	%H2O	LL	PL	PI	Cc	Cu
● 015	2015-314	0.3 to 0.7	SANDY SILT with GRAVEL(ML)	13.5	NP	NP	NP		
☒ 016	2015-315	1.2 to 1.6	WELL-GRADED GRAVEL with SAND(GW)	4.2	NP	NP	NP	1.3	24.0
▲ 017	2015-316	3.2 to 3.6	WELL-GRADED GRAVEL with SAND(GW)	3.9	NP	NP	NP	1.4	34.6

Field #	Lab #	100.0	80.0	50.0	25.0	20.0	12.5	10.0	5.0	2.5	1.25	0.630	0.315	0.160	0.080	% Breakdown			
																Gravel	Sand	Silt	Clay
● 015	2015-314	100.0	100.0	100.0	91.9	90.4	85.9	84.5	79.8	77.8	76.6	74.8	73.1	63.1	52.0	20.2	27.8	52.0	
☒ 016	2015-315	100.0	100.0	100.0	74.3	70.4	57.3	52.5	36.3	25.7	17.4	10.9	4.3	3.1	1.7	63.7	34.6	1.7	
▲ 017	2015-316	100.0	100.0	79.4	66.6	60.8	49.2	45.4	32.5	24.5	16.5	11.0	5.3	3.9	2.4	67.5	30.1	2.4	

Silt	Sand			Gravel	
	Fine	Medium	Coarse	Fine	Coarse



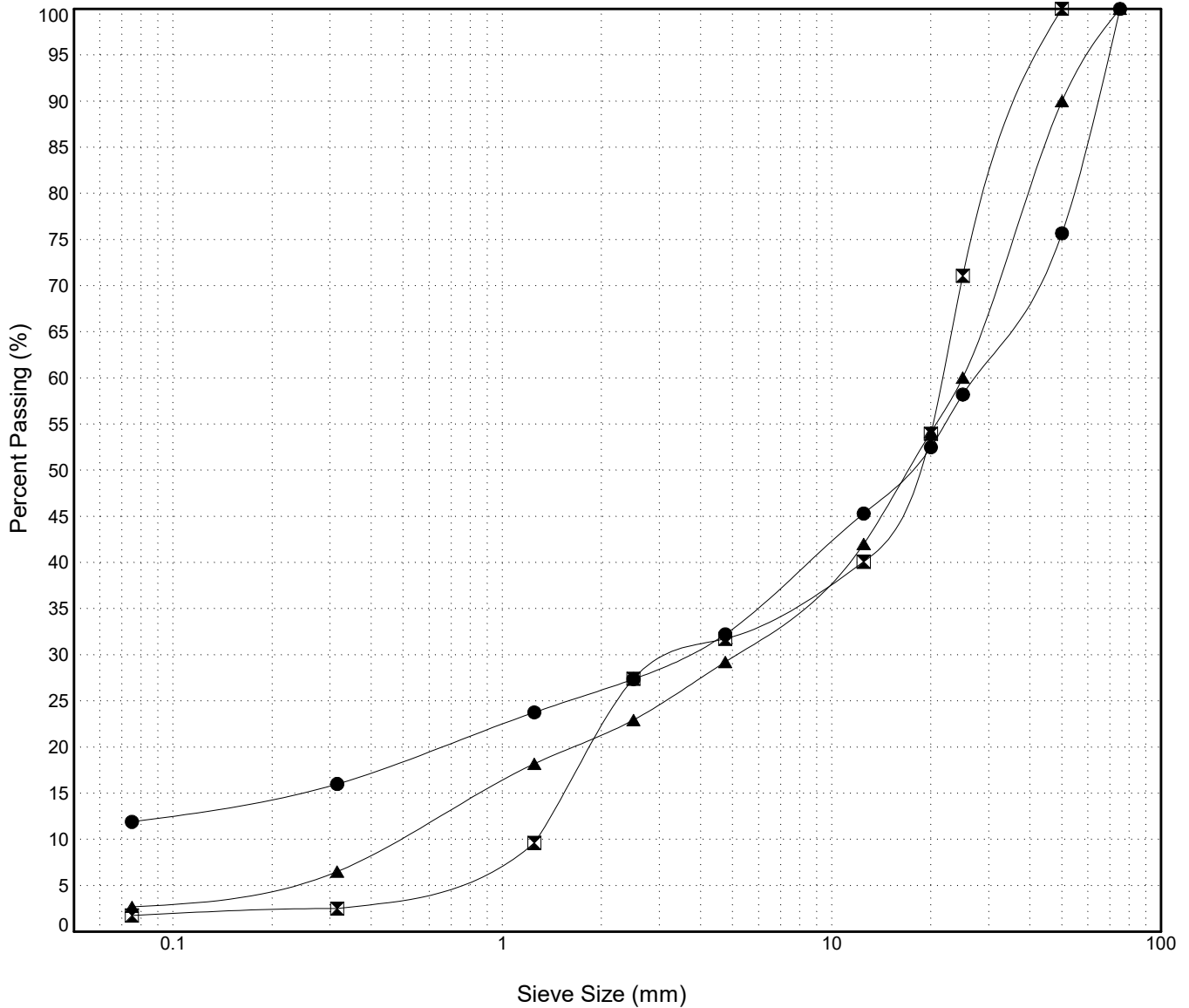
GRAIN SIZE ANALYSIS	Dawson City Aerodrome	SOURCE/TP#: 877-5408
Bonanza Sales	km 698 RHS	PROJECT NO:
Komatsu 300PC	Coordinates:Z07W N7103414.7m E591876.9m	ELEVATION: 801m

Master Revised July 2013

Field #	Lab #	Depth	Classification	%H2O	LL	PL	PI	Cc	Cu
● 018	2015-317	0.3 to 0.7	POORLY GRADED GRAVEL with SILT and SAND(GP-GM)	4.7	NP	NP	NP	12.1	696.8
☒ 019	2015-318	1.0 to 1.4	POORLY GRADED GRAVEL with SAND(GP)	4.1	NP	NP	NP	0.5	17.1
▲ 020	2015-319	3.4 to 3.8	WELL-GRADED GRAVEL with SAND(GW)	2.5	NP	NP	NP	2.1	52.5

Field #	Lab #	% PASSING	Sieve Size (mm)													% Breakdown			
			100.0	80.0	50.0	25.0	20.0	12.5	10.0	5.0	2.5	1.25	0.630	0.315	0.160	0.080	Gravel	Sand	Silt
● 018	2015-317	100.0	100.0	75.7	58.2	52.5	45.3	42.3	32.2	27.4	23.8	19.9	16.0	14.1	11.9	67.8	20.3	11.9	
☒ 019	2015-318	100.0	100.0	100.0	71.1	54.0	40.1	38.2	31.7	27.4	9.6	6.1	2.5	2.1	1.8	68.3	30.0	1.8	
▲ 020	2015-319	100.0	100.0	90.0	60.0	54.1	42.0	39.1	29.2	22.9	18.2	12.4	6.5	4.7	2.7	70.8	26.5	2.7	

Silt	Sand			Gravel	
	Fine	Medium	Coarse	Fine	Coarse

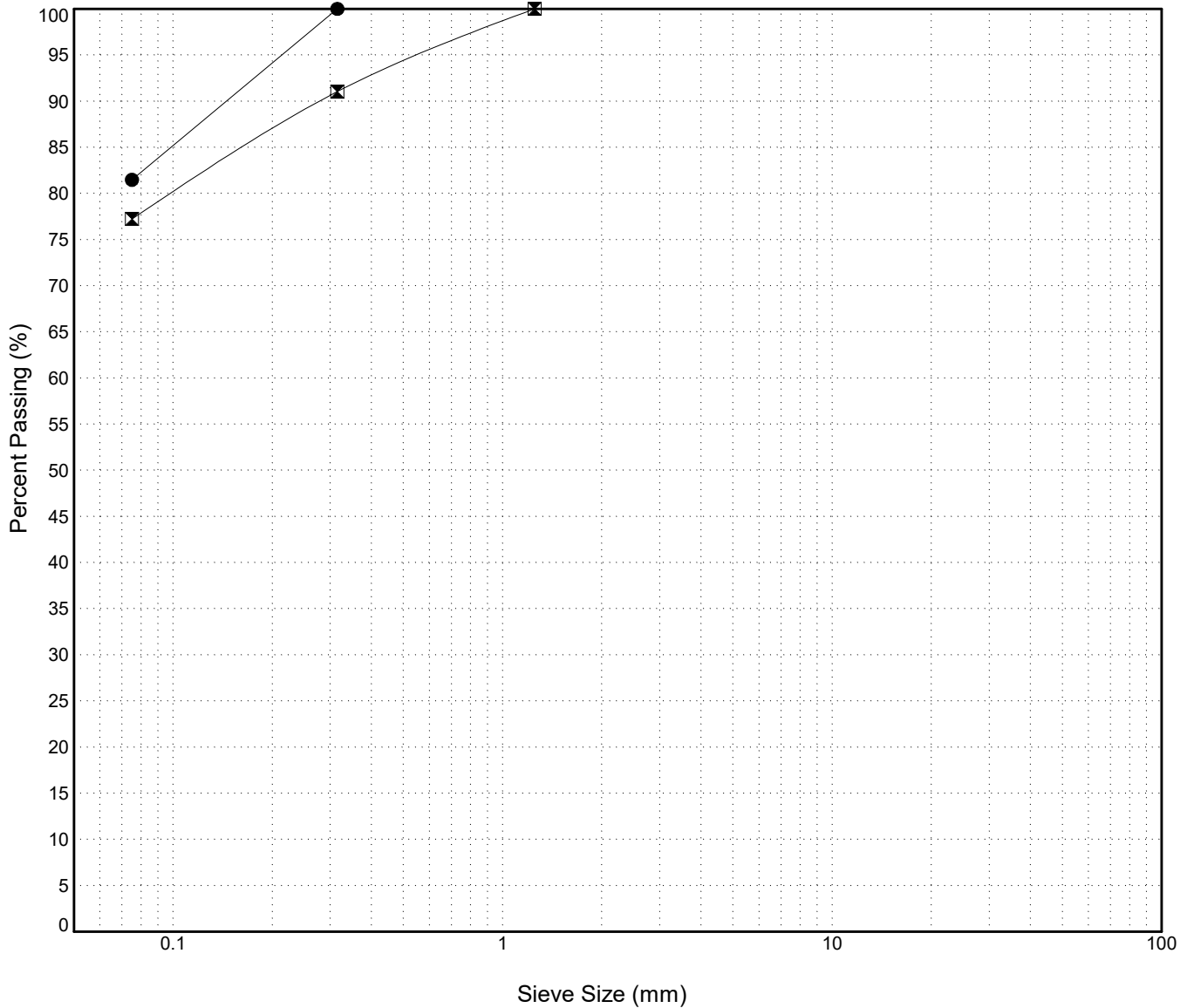


GRAIN SIZE ANALYSIS	Dawson City Aerodrome	SOURCE/TP#: 877-5409
Bonanza Sales	km 698 RHS	PROJECT NO:
Komatsu 300PC	Coordinates:Z07W N7103530.3m E592167.2m	ELEVATION: 801m

Master Revised July 2013

Field #	Lab #	Depth	Classification	%H2O	LL	PL	PI	Cc	Cu										
● 021	2015-320	0.2 to 0.6	ORGANIC SILT with SAND(OL)	100.0	NP	NP	NP												
☒ 022	2015-321	0.8 to 1.2	SILT with SAND(ML)	80.6	NP	NP	NP												
Field #	Lab #	100.0	80.0	50.0	25.0	20.0	12.5	10.0	5.0	2.5	1.25	0.630	0.315	0.160	0.080	% Breakdown			
● 021	2015-320	100.0	100.0	100.0	100.0	100.0	100.0	100.0	100.0	100.0	100.0	100.0	100.0	91.3	81.5	0.0	18.5	81.5	
☒ 022	2015-321	100.0	100.0	100.0	100.0	100.0	100.0	100.0	100.0	100.0	100.0	95.5	91.0	84.5	77.2	0.0	22.8	77.2	

Silt	Sand			Gravel	
	Fine	Medium	Coarse	Fine	Coarse

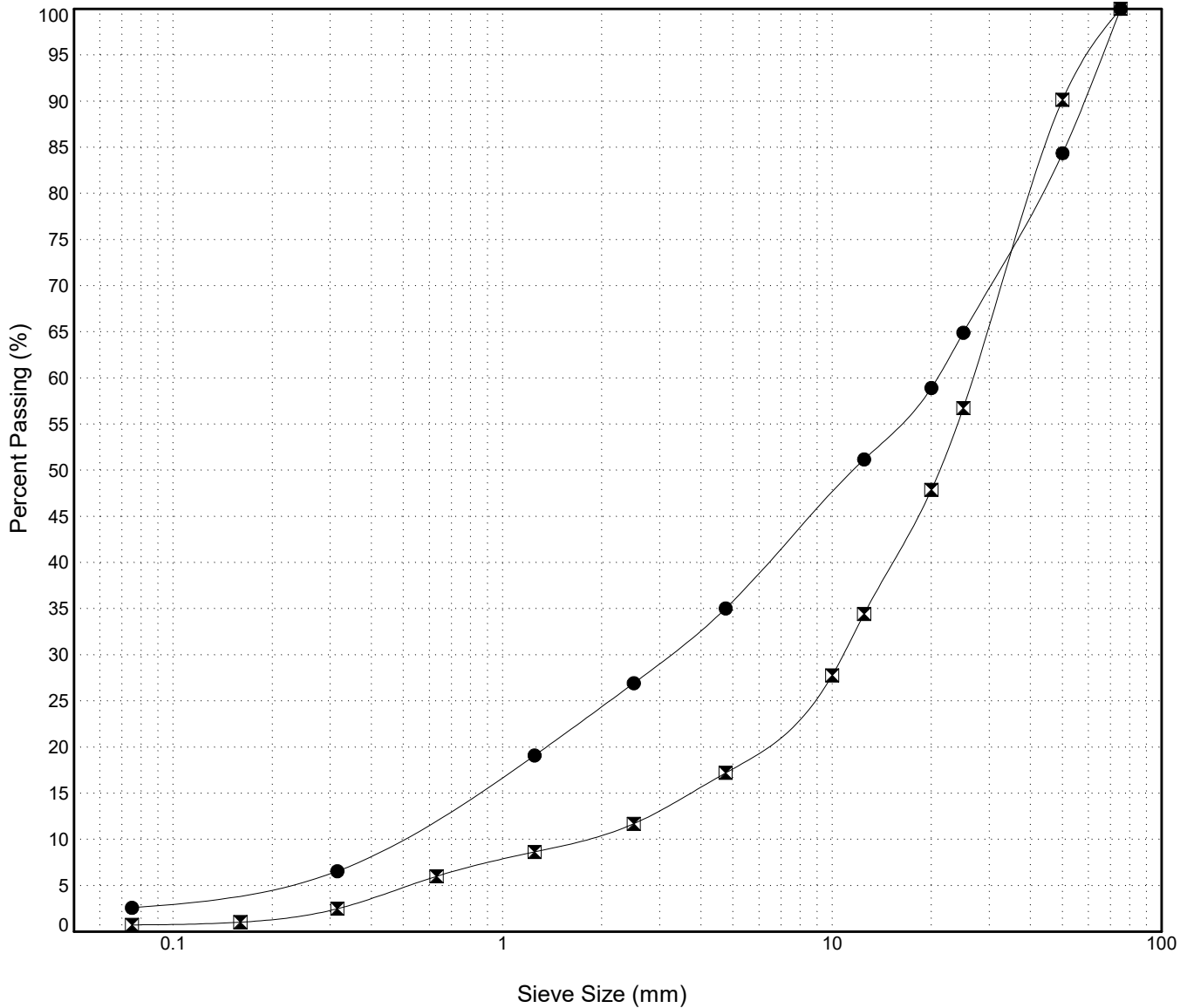


GRAIN SIZE ANALYSIS	Dawson City Aerodrome	SOURCE/TP#: 877-5410
Bonanza Sales	km 698 RHS	PROJECT NO:
Komatsu 300PC	Coordinates:Z07W N7103602m E592214.6m	ELEVATION: 801m

Master Revised July 2013

Field #	Lab #	Depth	Classification	%H2O	LL	PL	PI	Cc	Cu										
● 023	2015-322	0.6 to 1.0	WELL-GRADED GRAVEL with SAND(GW)	7.9	NP	NP	NP	1.1	45.2										
☒ 024	2015-323	1.6 to 2.0	WELL-GRADED GRAVEL with SAND(GW)	3.4	NP	NP	NP	2.5	15.7										
Field #	Lab #															% Breakdown			
		100.0	80.0	50.0	25.0	20.0	12.5	10.0	5.0	2.5	1.25	0.630	0.315	0.160	0.080	Gravel	Sand	Silt	Clay
● 023	2015-322	100.0	100.0	84.4	64.9	58.9	51.2	47.5	35.0	26.9	19.1	12.9	6.6	4.7	2.6	65.0	32.4	2.6	
☒ 024	2015-323	100.0	100.0	90.2	56.7	47.9	34.4	27.8	17.2	11.7	8.6	6.0	2.5	1.0	0.7	82.8	16.5	0.7	

Silt	Sand			Gravel	
	Fine	Medium	Coarse	Fine	Coarse



GRAIN SIZE ANALYSIS	Dawson City Aerodrome	SOURCE/TP#: 877-5411
Bonanza Sales	km 698 RHS	PROJECT NO:
Komatsu 300PC	Coordinates:Z07W N7103668.8m E592212.1m	ELEVATION: 801m

Master Revised July 2013

Field #	Lab #	Depth	Classification	%H2O	LL	PL	PI	Cc	Cu
● 025	2015-324	0.3 to 0.7	SILTY SAND(SM)	19.4	NP	NP	NP		
☒ 026	2015-325	1.0 to 1.4	POORLY GRADED GRAVEL with SAND(GP)	5.5	NP	NP	NP	8.0	38.5
▲ 027	2015-326	3.3 to 3.7	POORLY GRADED GRAVEL with SAND(GP)	3.5	NP	NP	NP	3.7	31.6

Field #	Lab #	% PASSING														% Breakdown			
		100.0	80.0	50.0	25.0	20.0	12.5	10.0	5.0	2.5	1.25	0.630	0.315	0.160	0.080	Gravel	Sand	Silt	Clay
● 025	2015-324	100.0	100.0	100.0	100.0	100.0	98.3	97.7	96.0	94.5	89.1	80.5	71.8	58.6	43.7	4.0	52.3	43.7	
☒ 026	2015-325	100.0	100.0	100.0	69.6	57.5	35.1	30.9	16.7	15.9	15.4	10.9	6.5	3.8	0.8	83.3	15.9	0.8	
▲ 027	2015-326	100.0	100.0	100.0	52.1	43.8	34.0	30.6	19.1	14.1	11.3	8.7	6.1	4.1	1.9	80.9	17.3	1.9	

Silt	Sand			Gravel	
	Fine	Medium	Coarse	Fine	Coarse

