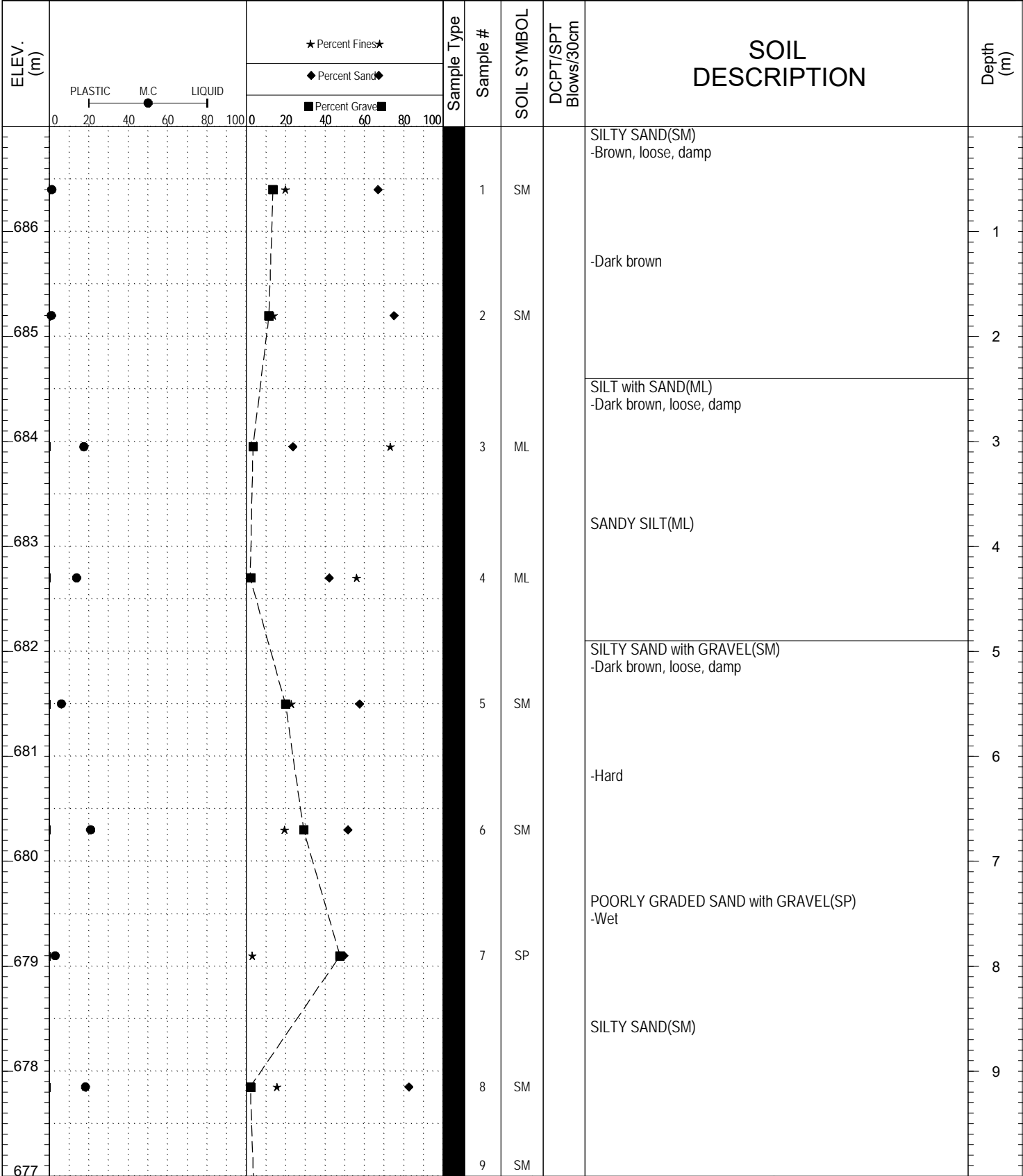


SUBSURFACE EXPLORATION AND TEST REPORT Klondike Highway South SOURCE/TP#: 888-5587

Midnight Sun Drilling Atlin road trouble spots, km 3.2 PROJECT NO:

ODEX Coordinates: Z08V N6685206m E555754m ELEVATION: 687m

SAMPLE TYPE  UNDISTURBED  DCPT  AUGER  BULK  SPT  CORE

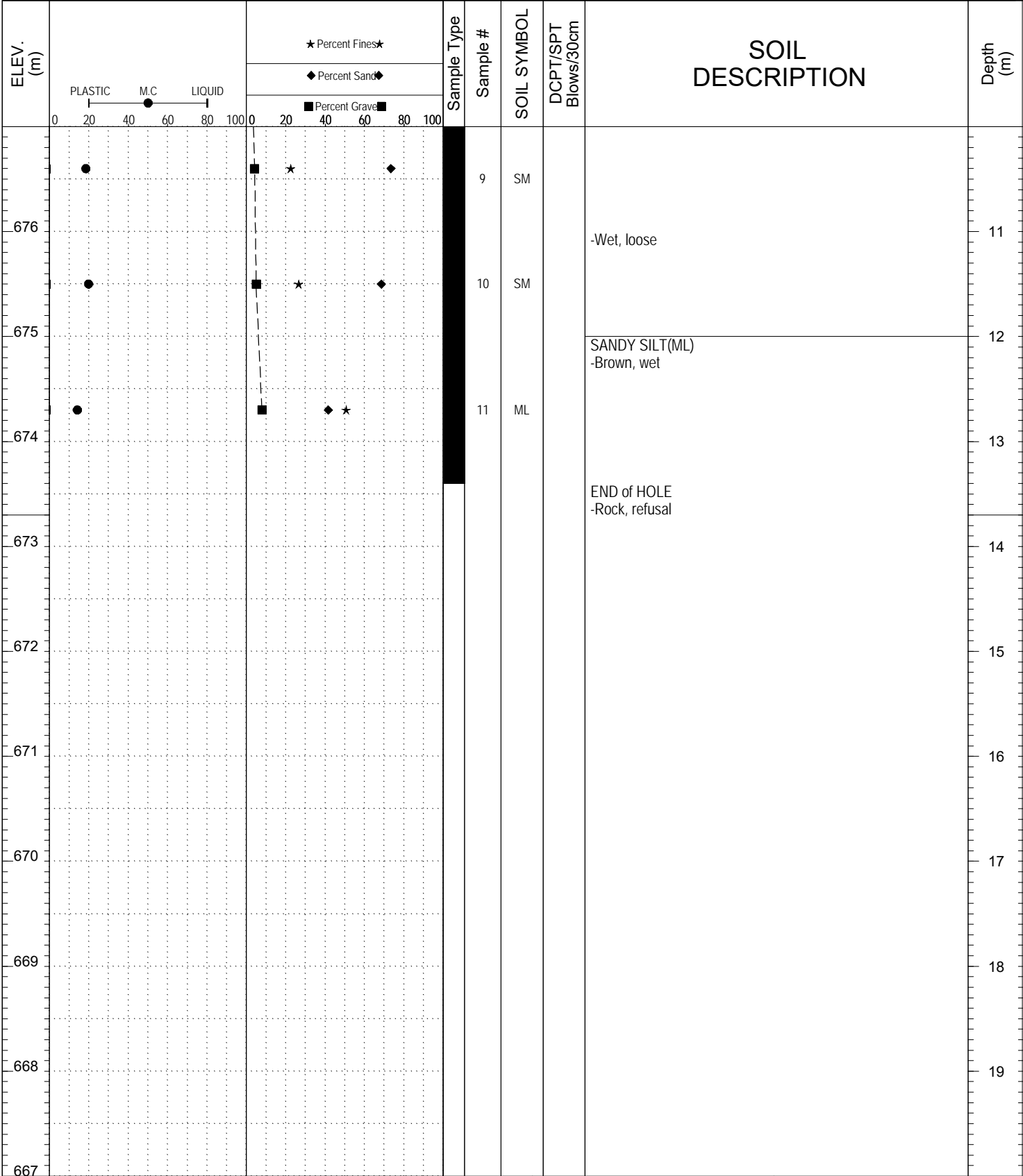


SUBSURFACE EXPLORATION AND TEST REPORT Klondike Highway South SOURCE/TP#: 888-5587

Midnight Sun Drilling Atlin road trouble spots, km 3.2 PROJECT NO:

ODEX Coordinates: Z08V N6685206m E555754m ELEVATION: 687m

SAMPLE TYPE  UNDISTURBED  DCPT  AUGER  BULK  SPT  CORE

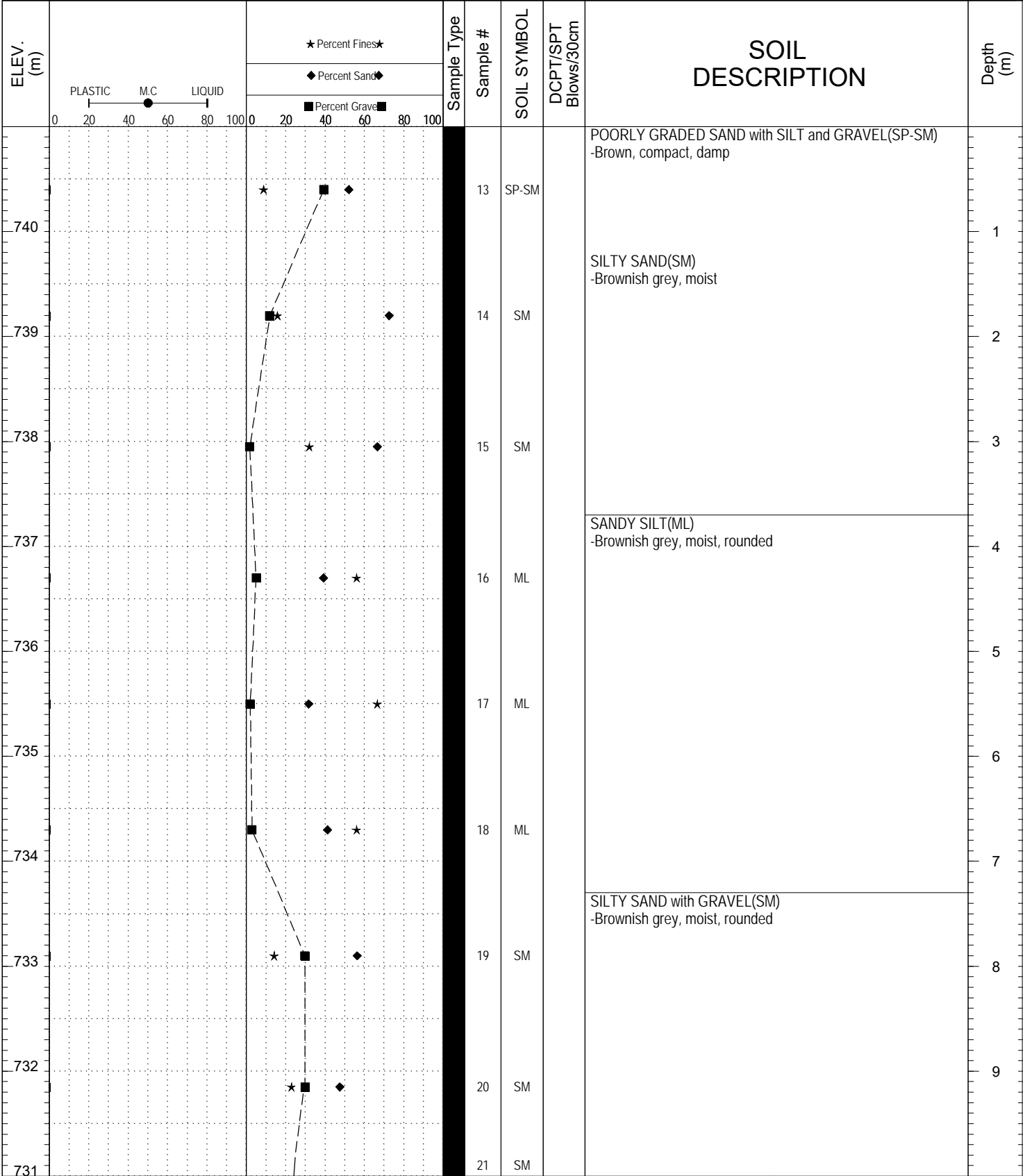


SUBSURFACE EXPLORATION AND TEST REPORT Klondike Highway South SOURCE/TP#: 888-5588

Midnight Sun Drilling Atlin road trouble spots, km 5.2 PROJECT NO:

ODEX Coordinates: Z08V N6684499m E556667m ELEVATION: 741m

SAMPLE TYPE  UNDISTURBED  DCPT  AUGER  BULK  SPT  CORE

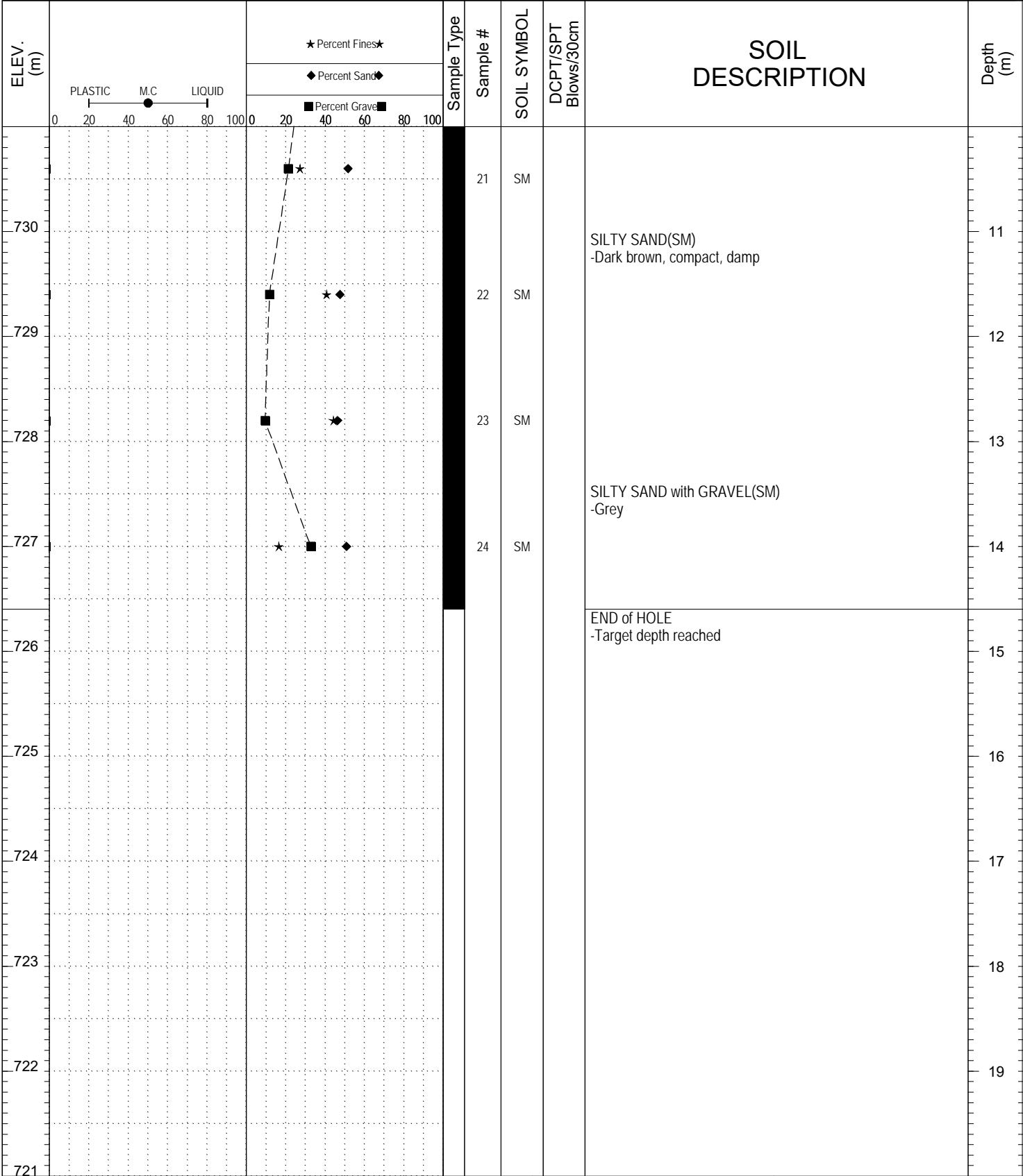


SUBSURFACE EXPLORATION AND TEST REPORT Klondike Highway South SOURCE/TP#: 888-5588

Midnight Sun Drilling Atlin road trouble spots, km 5.2 PROJECT NO:

ODEX Coordinates: Z08V N6684499m E556667m ELEVATION: 741m

SAMPLE TYPE  UNDISTURBED  DCPT  AUGER  BULK  SPT  CORE

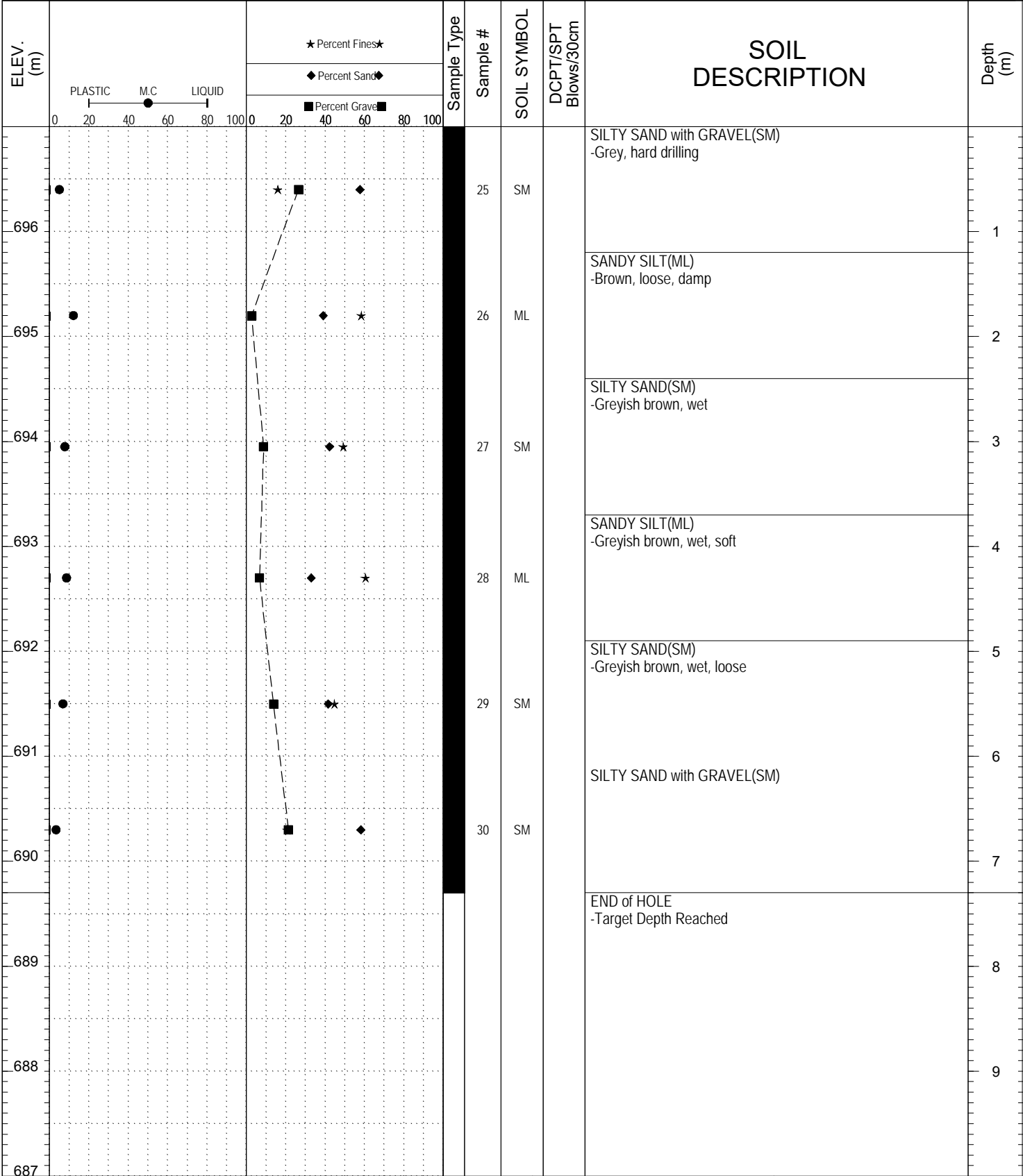


SUBSURFACE EXPLORATION AND TEST REPORT Klondike Highway South SOURCE/TP#: 888-5589

Midnight Sun Drilling Atlin road trouble spots, Boat Launch PROJECT NO:

ODEX Coordinates: Z08V N6685204m E555753m ELEVATION: 697m

SAMPLE TYPE  UNDISTURBED  DCPT  AUGER  BULK  SPT  CORE



GRAIN SIZE ANALYSIS	Atlin road trouble spots	SOURCE/TP#: 888-5587
Midnigh Sun Drilling	km 3.2	PROJECT NO:
ODEX	Coordinates:Z08V N6685206m E555754m	ELEVATION: 687m

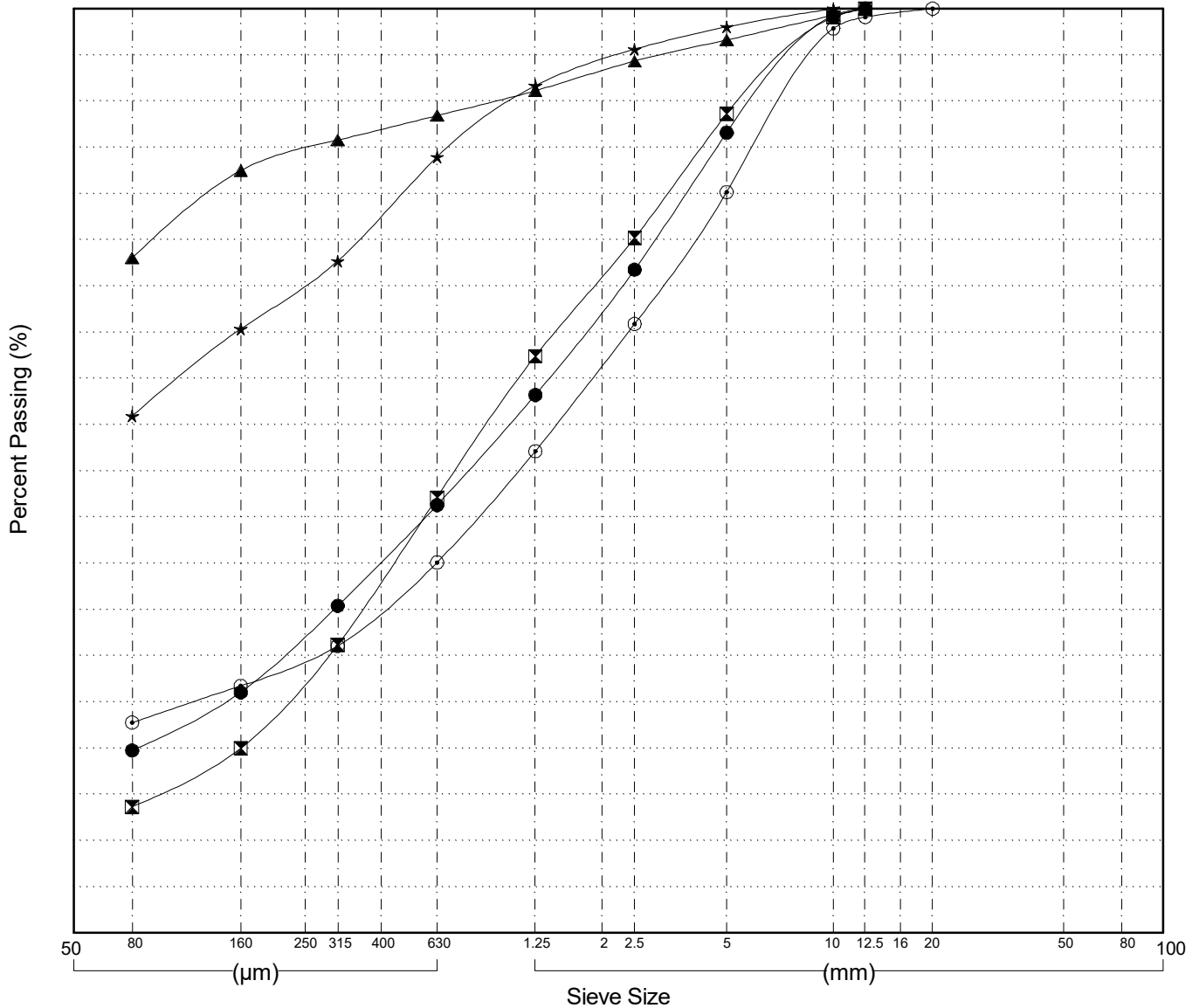
Master Revised July 2013

Field#	Lab#	Depth	Classification	%H2O	LL	PL	PI	Cc	Cu
● 1	2015-685	0.0 to 1.2	SILTY SAND(SM)	1.1	NP	NP	NP		
☒ 2	2015-686	1.2 to 2.4	SILTY SAND(SM)	0.9	NP	NP	NP		
▲ 3	2015-687	2.4 to 3.7	SILT with SAND(ML)	17.4	NP	NP	NP		
★ 4	2015-688	3.7 to 4.9	SANDY SILT(ML)	13.7	NP	NP	NP		
⊙ 5	2015-689	4.9 to 6.1	SILTY SAND with GRAVEL(SM)	6.0	NP	NP	NP		

Field#	Lab#	% PASSING														% Breakdown			
		100.0	80.0	50.0	25.0	20.0	12.5	10.0	5.0	2.5	1.25	0.630	0.315	0.160	0.080	Gravel	Sand	Silt	Clay
● 1	2015-685	100.0	100.0	100.0	100.0	100.0	100.0	99.2	86.6	71.8	58.2	46.3	35.4	26.0	19.8	13.4	66.8	19.8	
☒ 2	2015-686	100.0	100.0	100.0	100.0	100.0	100.0	99.1	88.6	75.2	62.4	47.1	31.2	20.0	13.6	11.4	75.0	13.6	
▲ 3	2015-687	100.0	100.0	100.0	100.0	100.0	100.0	99.3	96.6	94.3	91.1	88.4	85.8	82.5	73.0	3.4	23.6	73.0	
★ 4	2015-688	100.0	100.0	100.0	100.0	100.0	100.0	100.0	98.0	95.6	91.7	84.0	72.7	65.3	55.9	2.0	42.1	55.9	
⊙ 5	2015-689	100.0	100.0	100.0	100.0	100.0	99.1	97.9	80.1	65.9	52.1	40.1	31.1	26.7	22.8	19.9	57.4	22.8	

Silt	Sand			Gravel	
	Fine	Medium	Coarse	Fine	Coarse



GRAIN SIZE ANALYSIS	Atlin road trouble spots	SOURCE/TP#: 888-5587
Midnigh Sun Drilling	km 3.2	PROJECT NO:
ODEX	Coordinates:Z08V N6685206m E555754m	ELEVATION: 687m

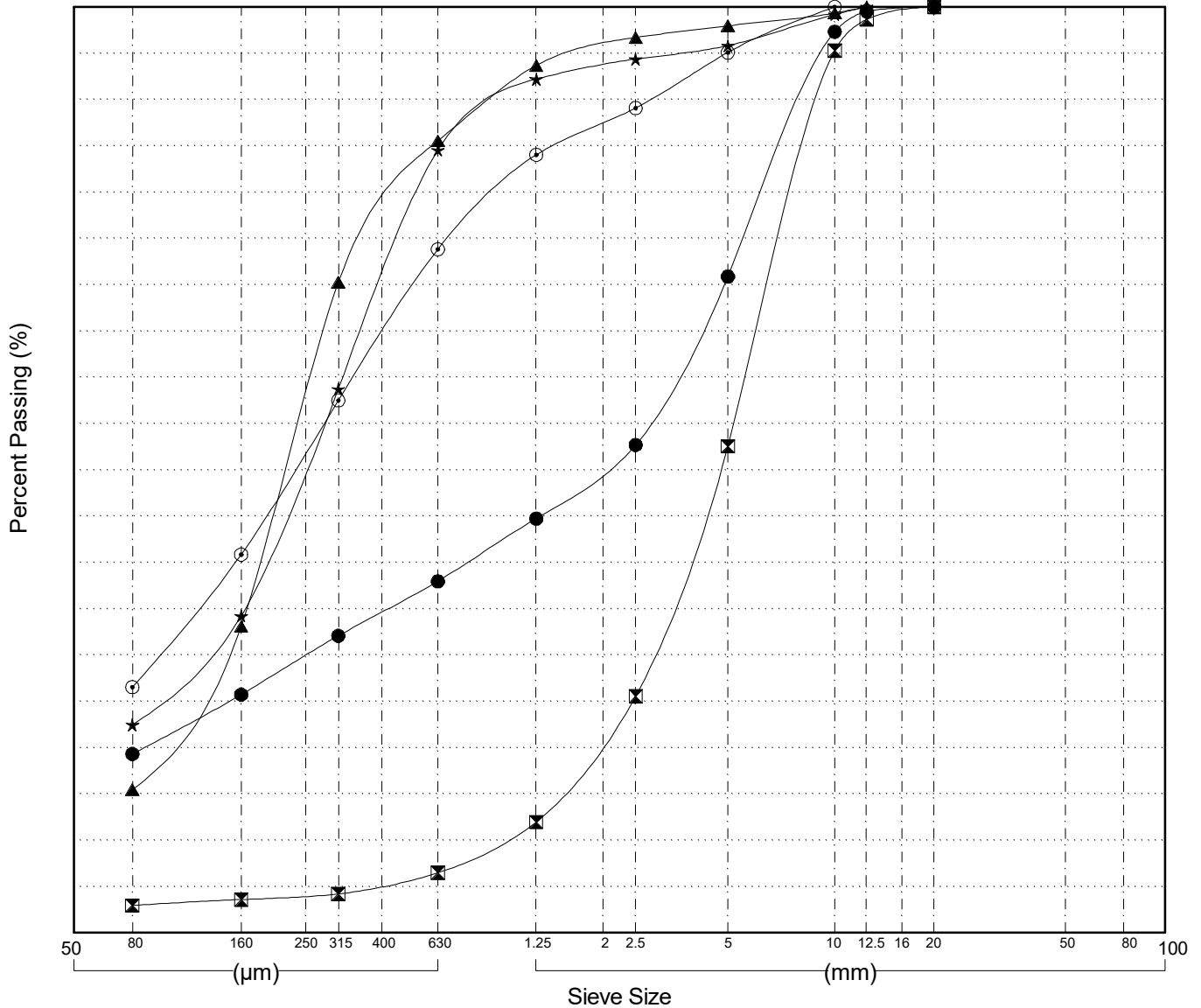
Master Revised July 2013

Field#	Lab#	Depth	Classification	%H <sub>2</sub> O	LL	PL	PI	C <sub>c</sub>	C <sub>u</sub>
● 6	2015-690	6.1 to 7.3	SILTY SAND with GRAVEL(SM)	20.8	NP	NP	NP		
☒ 7	2015-691	7.3 to 8.5	POORLY GRADED SAND with GRAVEL(SP)	2.8	NP	NP	NP	1.5	5.5
▲ 8	2015-692	8.5 to 9.8	SILTY SAND(SM)	18.2	NP	NP	NP		
★ 9	2015-693	9.8 to 11.0	SILTY SAND(SM)	18.4	NP	NP	NP		
⊙ 10	2015-694	11.0 to 12.0	SILTY SAND(SM)	19.8	NP	NP	NP		

Field#	Lab#	100.0	80.0	50.0	25.0	20.0	12.5	10.0	5.0	2.5	1.25	0.630	0.315	0.160	0.080	%Breakdown			
																Gravel	Sand	Silt	Clay
● 6	2015-690	100.0	100.0	100.0	100.0	100.0	99.5	97.3	70.9	52.7	44.7	38.0	32.1	25.7	19.3	29.1	51.6	19.3	
☒ 7	2015-691	100.0	100.0	100.0	100.0	100.0	98.6	95.3	52.6	25.6	12.0	6.5	4.2	3.6	3.0	47.4	49.6	3.0	
▲ 8	2015-692	100.0	100.0	100.0	100.0	100.0	100.0	99.3	98.0	96.7	93.7	85.5	70.3	33.1	15.5	2.0	82.5	15.5	
★ 9	2015-693	100.0	100.0	100.0	100.0	100.0	100.0	99.2	95.8	94.4	92.2	84.5	58.7	34.2	22.5	4.2	73.3	22.5	
⊙ 10	2015-694	100.0	100.0	100.0	100.0	100.0	100.0	100.0	95.1	89.1	84.0	73.8	57.5	40.9	26.5	4.9	68.5	26.5	

Silt	Sand			Gravel	
	Fine	Medium	Coarse	Fine	Coarse



Highways and Public Works  
Transportation Engineering Branch

LOGGED BY: G.Kennedy  
COMPILED BY: R.Stilwell  
REVIEWED BY:

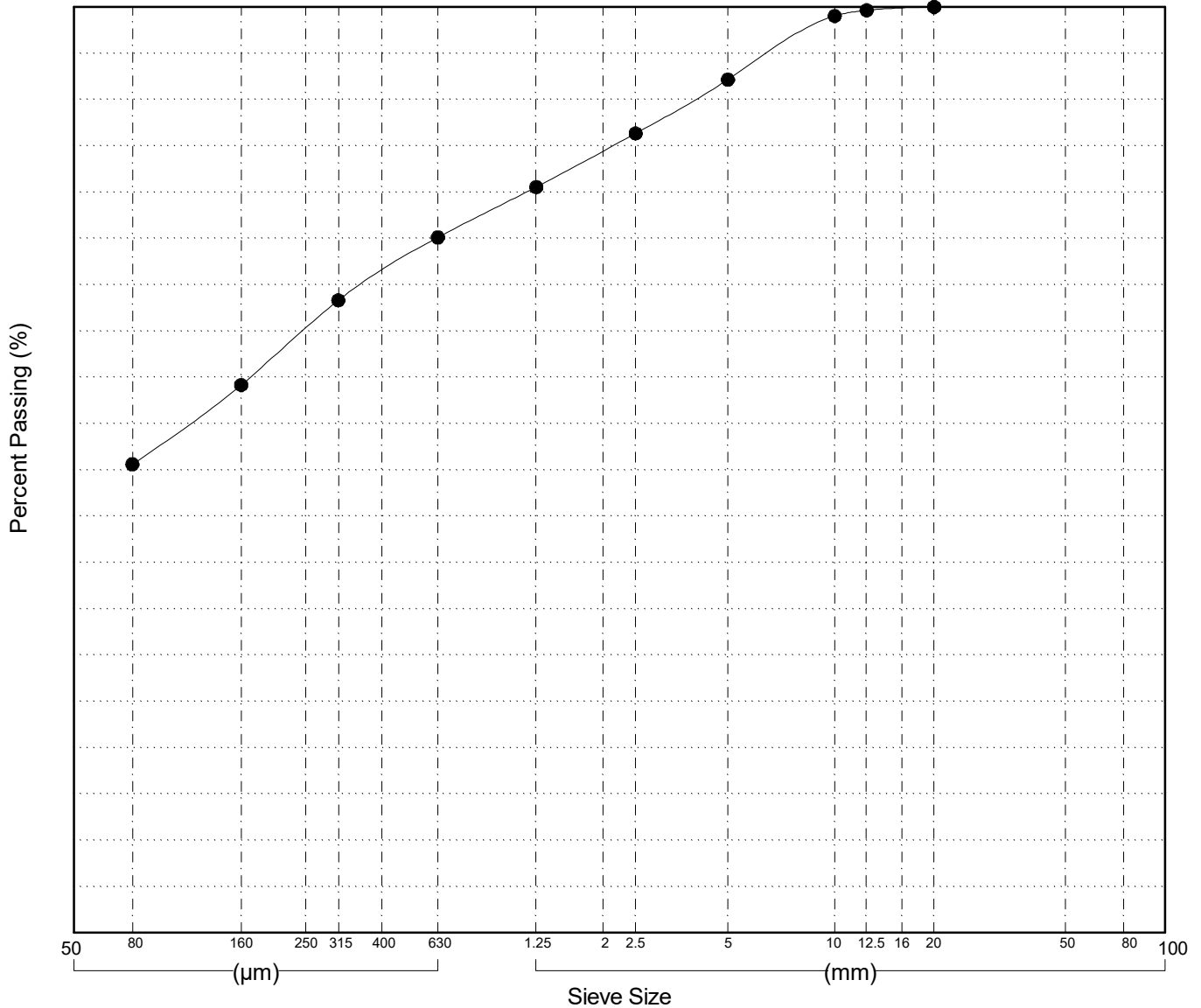
Pit #  
Complete: 12/10/2015 12:40:00 PM

GRAIN SIZE ANALYSIS	Atlin road trouble spots	SOURCE/TP#: 888-5587
Midnigh Sun Drilling	km 3.2	PROJECT NO:
ODEX	Coordinates:Z08V N6685206m E555754m	ELEVATION: 687m

Master Revised July 2013

Field#	Lab#	Depth	Classification											%H2O	LL	PL	PI	Cc	Cu		
● 11	2015-695	12.0 to 13.4	SANDY SILT (ML)											14.1	NP	NP	NP				
Field#	Lab#		100.0	80.0	50.0	25.0	20.0	12.5	10.0	5.0	2.5	1.25	0.630	0.315	0.160	0.080	%Breakdown				
● 11	2015-695	% PASSING	100.0	100.0	100.0	100.0	100.0	99.6	99.0	92.2	86.3	80.5	75.1	68.3	59.2	50.6	Gravel	Sand	Silt	Clay	
																	7.8	41.5	50.6		

Silt	Sand			Gravel	
	Fine	Medium	Coarse	Fine	Coarse



Highways and Public Works  
Transportation Engineering Branch

LOGGED BY: G.Kennedy  
COMPILED BY: R.Stilwell  
REVIEWED BY:

Pit #  
Complete: 12/10/2015 12:40:00 PM  
Page 3 of 3

GRAIN SIZE ANALYSIS	Atlin road trouble spots	SOURCE/TP#: 888-5588
Midnigh Sun Drilling	km 5.2	PROJECT NO:
ODEX	Coordinates:Z08V N6684499m E556667m	ELEVATION: 741m

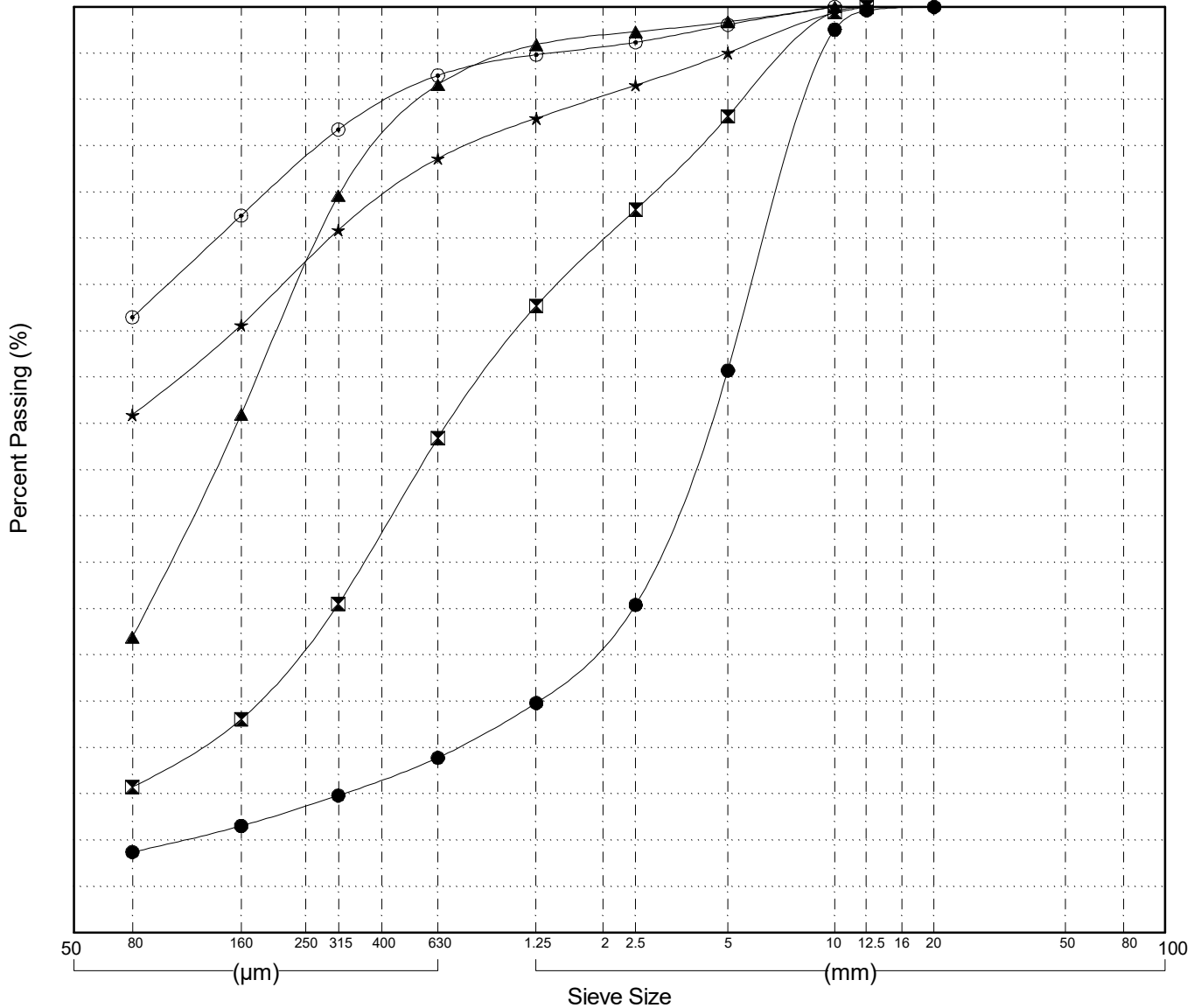
Master Revised July 2013

Field#	Lab#	Depth	Classification	%H2O	LL	PL	PI	Cc	Cu
● 13	2015-697	0.0 to 1.2	POORLY GRADED SAND with SILT and GRAVEL(SP-SM)		NP	NP	NP	6.2	44.2
☒ 14	2015-698	1.2 to 2.4	SILTY SAND(SM)		NP	NP	NP		
▲ 15	2015-699	2.4 to 3.7	SILTY SAND(SM)		NP	NP	NP		
★ 16	2015-700	3.7 to 4.9	SANDY SILT(ML)		NP	NP	NP		
⊙ 17	2015-701	4.9 to 6.1	SANDY SILT(ML)		NP	NP	NP		

Field#	Lab#	%PASSING														%Breakdown			
		100.0	80.0	50.0	25.0	20.0	12.5	10.0	5.0	2.5	1.25	0.630	0.315	0.160	0.080	Gravel	Sand	Silt	Clay
● 13	2015-697	100.0	100.0	100.0	100.0	100.0	99.6	97.6	60.7	35.4	24.8	18.9	14.8	11.5	8.7	39.3	52.0	8.7	
☒ 14	2015-698	100.0	100.0	100.0	100.0	100.0	100.0	99.5	88.2	78.1	67.7	53.4	35.5	23.1	15.7	11.8	72.4	15.7	
▲ 15	2015-699	100.0	100.0	100.0	100.0	100.0	100.0	100.0	98.4	97.3	95.9	91.6	79.6	56.0	31.9	1.6	66.5	31.9	
★ 16	2015-700	100.0	100.0	100.0	100.0	100.0	100.0	99.3	95.0	91.5	88.0	83.6	75.9	65.6	56.0	5.0	39.1	56.0	
⊙ 17	2015-701	100.0	100.0	100.0	100.0	100.0	100.0	100.0	98.1	96.2	94.8	92.6	86.7	77.5	66.5	1.9	31.6	66.5	

Silt	Sand			Gravel	
	Fine	Medium	Coarse	Fine	Coarse



GRAIN SIZE ANALYSIS	Atlin road trouble spots	SOURCE/TP#: 888-5588
Midnigh Sun Drilling	km 5.2	PROJECT NO:
ODEX	Coordinates:Z08V N6684499m E556667m	ELEVATION: 741m

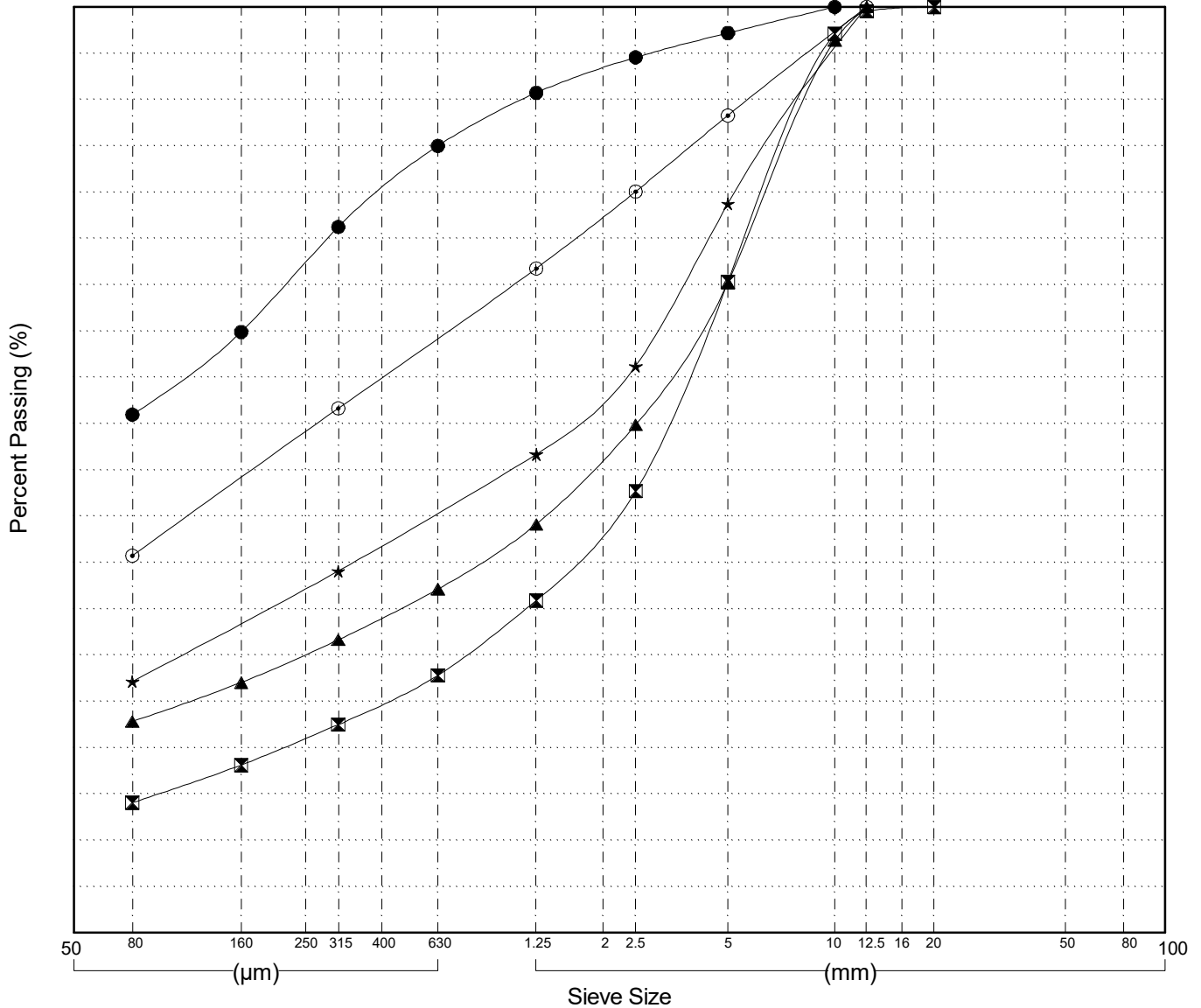
Master Revised July 2013

Field#	Lab#	Depth	Classification	%H2O	LL	PL	PI	Cc	Cu
● 18	2015-702	6.1 to 7.3	SANDY SILT(ML)		NP	NP	NP		
☒ 19	2015-703	7.3 to 8.5	SILTY SAND with GRAVEL(SM)		NP	NP	NP		
▲ 20	2015-704	8.5 to 9.8	SILTY SAND with GRAVEL(SM)		NP	NP	NP		
★ 21	2015-705	9.8 to 11.0	SILTY SAND with GRAVEL(SM)		NP	NP	NP		
⊙ 22	2015-706	11.0 to 12.2	SILTY SAND(SM)		NP	NP	NP		

Field#	Lab#	%PASSING														%Breakdown			
		100.0	80.0	50.0	25.0	20.0	12.5	10.0	5.0	2.5	1.25	0.630	0.315	0.160	0.080	Gravel	Sand	Silt	Clay
● 18	2015-702	100.0	100.0	100.0	100.0	100.0	100.0	100.0	97.2	94.6	90.7	85.0	76.2	64.9	56.0	2.8	41.2	56.0	
☒ 19	2015-703	100.0	100.0	100.0	100.0	100.0	99.5	97.1	70.3	47.7	35.9	27.8	22.5	18.1	14.1	29.7	56.2	14.1	
▲ 20	2015-704	100.0	100.0	100.0	100.0	100.0	100.0	96.4	70.2	54.9	44.1	37.1	31.7	27.0	22.8	29.8	47.4	22.8	
★ 21	2015-705	100.0	100.0	100.0	100.0	100.0	100.0	95.1	78.7	61.2	51.7	45.4	39.1	33.4	27.2	21.3	51.6	27.2	
⊙ 22	2015-706	100.0	100.0	100.0	100.0	100.0	100.0	97.3	88.3	80.1	71.7	64.2	56.6	49.1	40.7	11.7	47.5	40.7	

Silt	Sand			Gravel	
	Fine	Medium	Coarse	Fine	Coarse

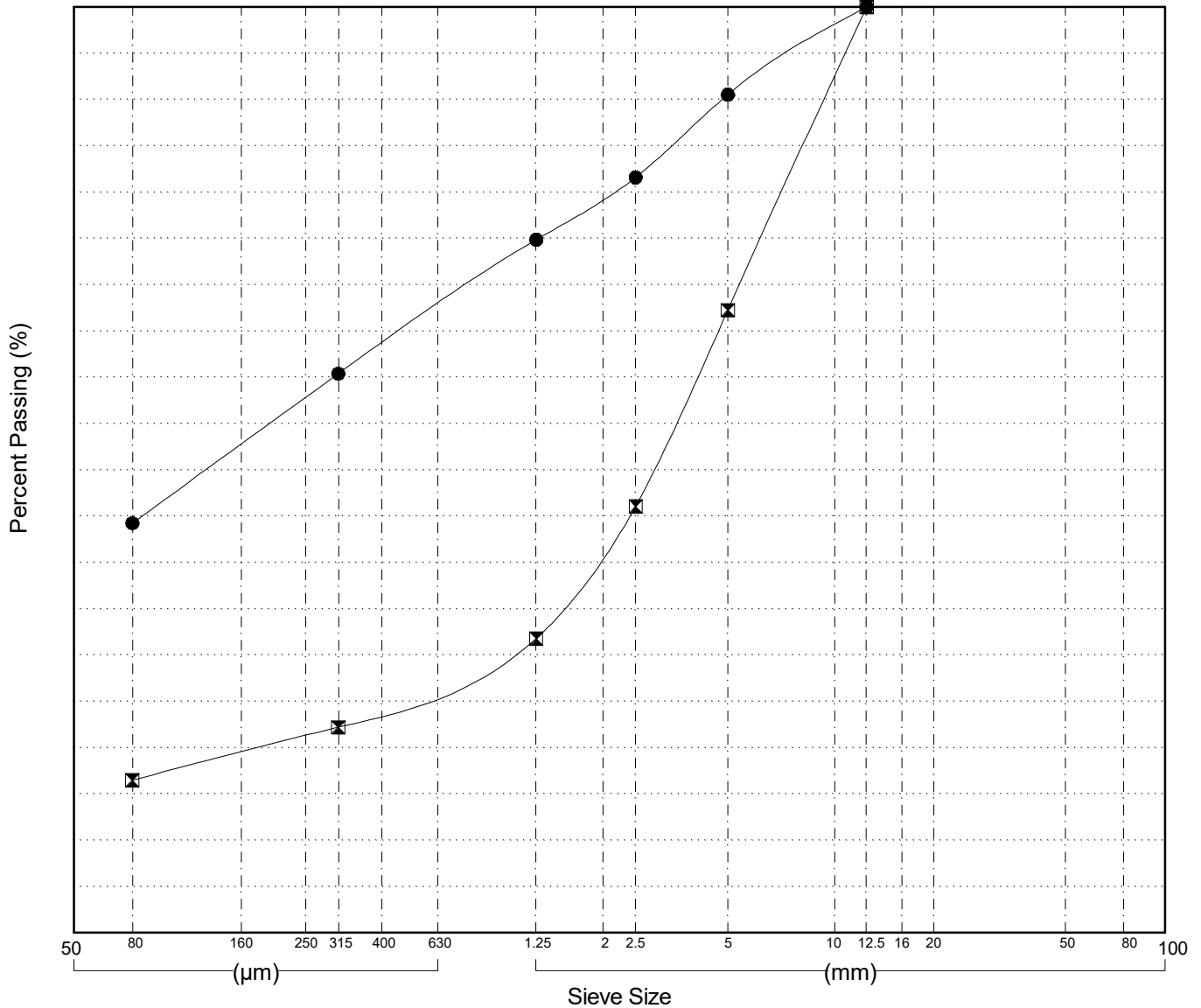


GRAIN SIZE ANALYSIS	Atlin road trouble spots	SOURCE/TP#: 888-5588
Midnigh Sun Drilling	km 5.2	PROJECT NO:
ODEX	Coordinates:Z08V N6684499m E556667m	ELEVATION: 741m

Master Revised July 2013

Field#	Lab#	Depth	Classification	%H2O	LL	PL	PI	Cc	Cu											
● 23	2015-707	12.2 to 13.4	SILTY SAND(SM)		NP	NP	NP													
☒ 24	2015-708	13.4 to 14.6	SILTY SAND with GRAVEL(SM)		NP	NP	NP													
Field#	Lab#	100.0	80.0	50.0	25.0	20.0	12.5	10.0	5.0	2.5	1.25	0.630	0.315	0.160	0.080	%Breakdown				
● 23	2015-707	100.0	100.0	100.0	100.0	100.0	100.0	97.8	90.5	81.6	74.9	67.7	60.4	52.8	44.2	Gravel	Sand	Silt	Clay	
☒ 24	2015-708	100.0	100.0	100.0	100.0	100.0	100.0	92.4	67.3	46.1	31.8	27.0	22.2	19.5	16.5	32.7	50.8	16.5		

Silt	Sand			Gravel	
	Fine	Medium	Coarse	Fine	Coarse



Highways and Public Works  
Transportation Engineering Branch

LOGGED BY: G.Kennedy  
COMPILED BY: R.Stilwell  
REVIEWED BY:

Pit #  
Complete: 12/11/2015 1:25:00 PM

GRAIN SIZE ANALYSIS	Atlin road trouble spots	SOURCE/TP#: 888-5589
Midnigh Sun Drilling	Boat Launch	PROJECT NO:
ODEX	Coordinates:Z08V N6685204m E555753m	ELEVATION: 697m

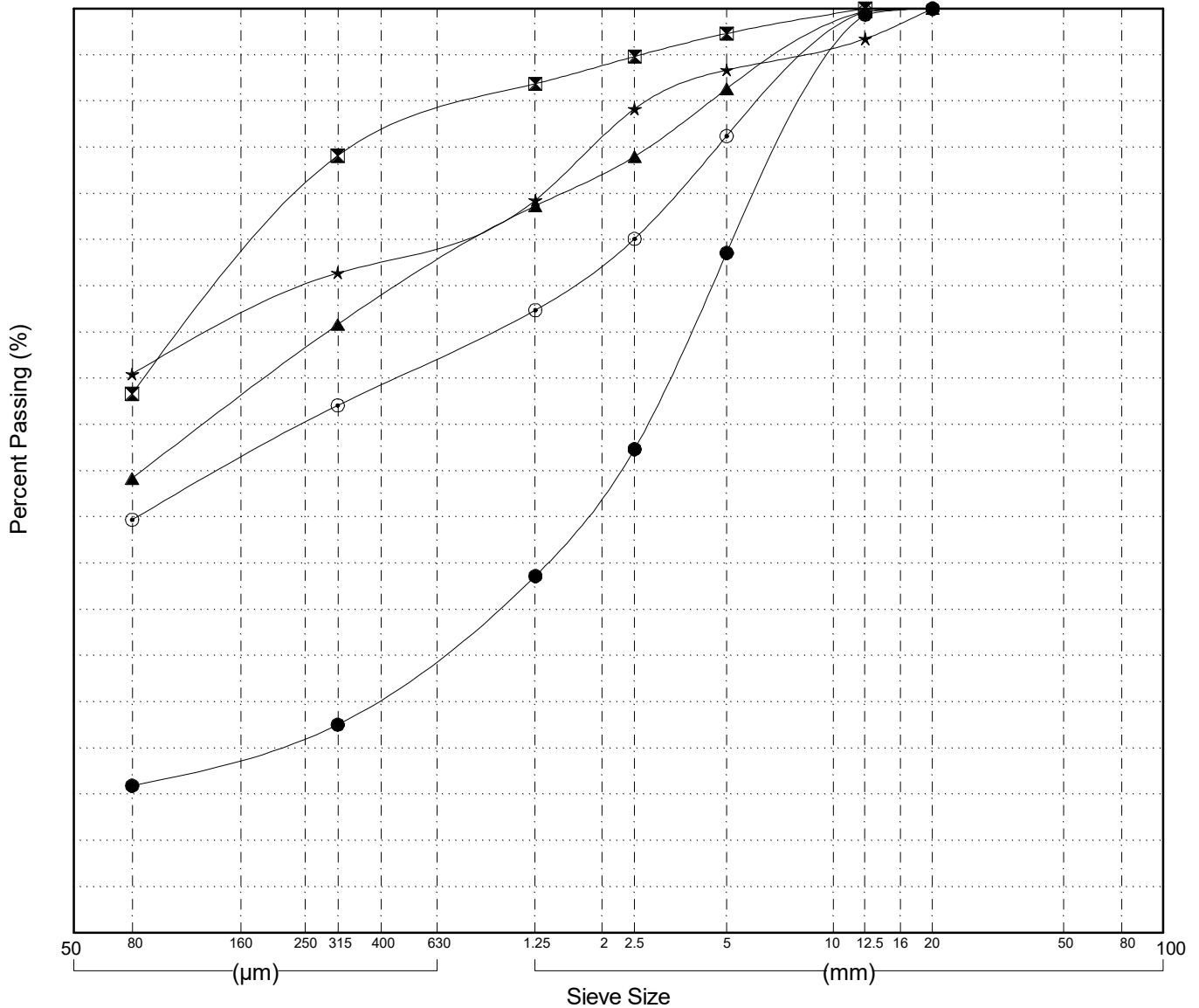
Master Revised July 2013

Field#	Lab#	Depth	Classification	%H2O	LL	PL	PI	Cc	Cu
● 25	2015-709	0.0 to 1.2	SILTY SAND with GRAVEL(SM)	5.0	NP	NP	NP		
☒ 26	2015-710	1.2 to 2.4	SANDY SILT(ML)	12.1	NP	NP	NP		
▲ 27	2015-711	2.4 to 3.7	SILTY SAND(SM)	7.7	NP	NP	NP		
★ 28	2015-712	3.7 to 4.9	SANDY SILT(ML)	8.6	NP	NP	NP		
⊙ 29	2015-713	4.9 to 6.1	SILTY SAND(SM)	6.8	NP	NP	NP		

Field#	Lab#	%PASSING														%Breakdown			
		100.0	80.0	50.0	25.0	20.0	12.5	10.0	5.0	2.5	1.25	0.630	0.315	0.160	0.080	Gravel	Sand	Silt	Clay
● 25	2015-709	100.0	100.0	100.0	100.0	100.0	99.3	93.4	73.6	52.3	38.6	30.6	22.5	19.4	15.9	26.4	57.6	15.9	
☒ 26	2015-710	100.0	100.0	100.0	100.0	100.0	100.0	99.4	97.3	94.8	91.9	88.0	84.1	71.9	58.3	2.7	39.0	58.3	
▲ 27	2015-711	100.0	100.0	100.0	100.0	100.0	99.7	97.7	91.3	84.0	78.7	72.3	65.8	58.0	49.2	8.7	42.1	49.2	
★ 28	2015-712	100.0	100.0	100.0	100.0	100.0	96.7	96.0	93.4	89.2	79.3	75.4	71.4	66.2	60.5	6.6	32.9	60.5	
⊙ 29	2015-713	100.0	100.0	100.0	100.0	100.0	99.7	96.6	86.2	75.1	67.4	62.3	57.1	51.2	44.7	13.8	41.5	44.7	

Silt	Sand			Gravel	
	Fine	Medium	Coarse	Fine	Coarse



Highways and Public Works  
Transportation Engineering Branch

LOGGED BY: G.Kennedy  
COMPILED BY: R.Stilwell  
REVIEWED BY:

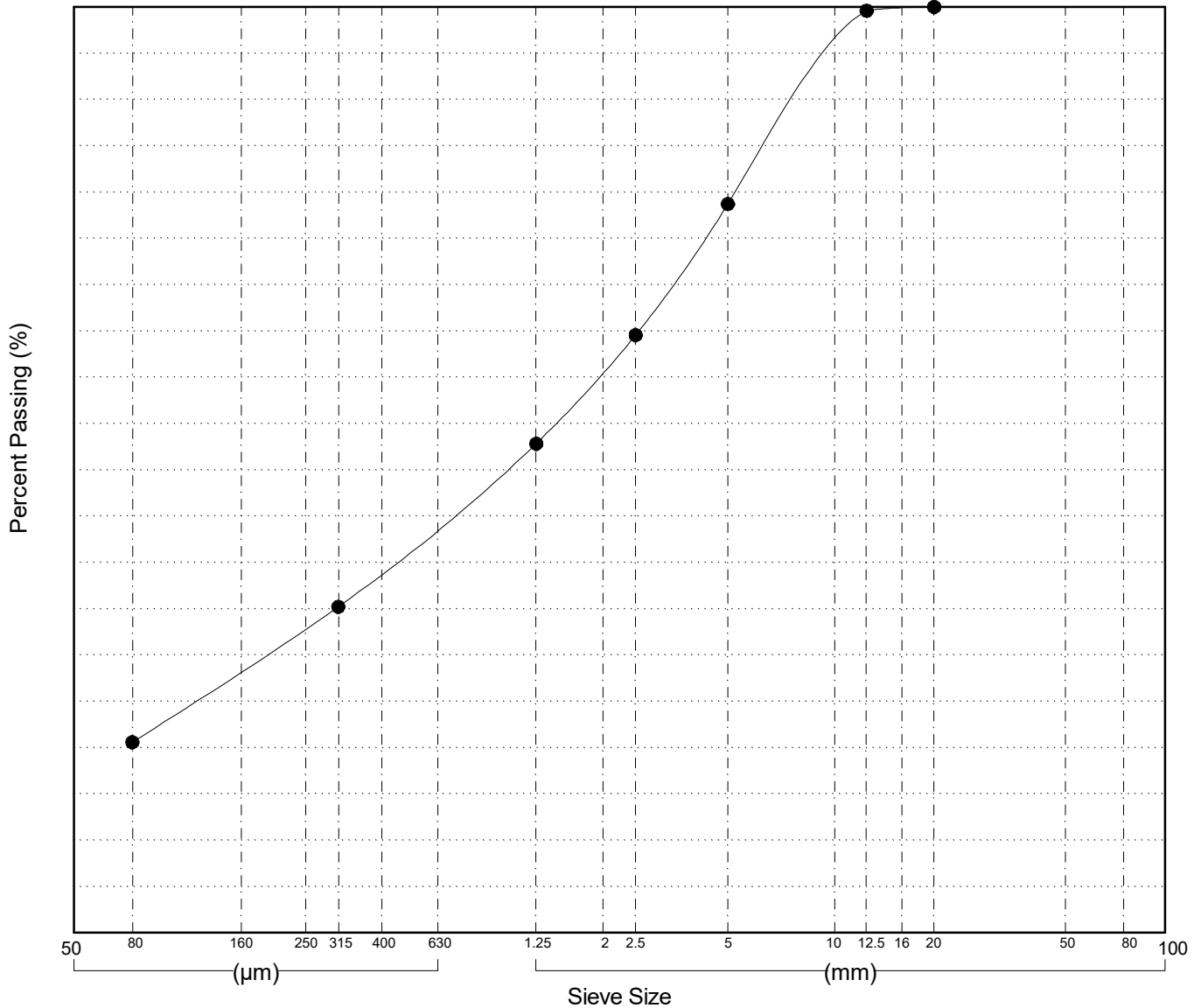
Pit #  
Complete: 12/10/2015 5:12:00 PM

GRAIN SIZE ANALYSIS	Atlin road trouble spots	SOURCE/TP#: 888-5589
Midnigh Sun Drilling	Boat Launch	PROJECT NO:
ODEX	Coordinates:Z08V N6685204m E555753m	ELEVATION: 697m

Master Revised July 2013

Field#	Lab#	Depth	Classification	%H2O	LL	PL	PI	Cc	Cu										
● 30	2015-714	6.1 to 7.3	SILTY SAND with GRAVEL(SM)	3.3	NP	NP	NP												
Field#	Lab#	100.0	80.0	50.0	25.0	20.0	12.5	10.0	5.0	2.5	1.25	0.630	0.315	0.160	0.080	%Breakdown			
● 30	2015-714	100.0	100.0	100.0	100.0	100.0	99.6	94.8	78.7	64.6	52.8	44.1	35.2	28.3	20.6	Gravel	Sand	Silt	Clay
																21.3	58.1	20.6	

Silt	Sand			Gravel	
	Fine	Medium	Coarse	Fine	Coarse



Highways and Public Works  
Transportation Engineering Branch

LOGGED BY: G.Kennedy  
COMPILED BY: R.Stilwell  
REVIEWED BY:

Pit #  
Complete: 12/10/2015 5:12:00 PM  
Page 2 of 2