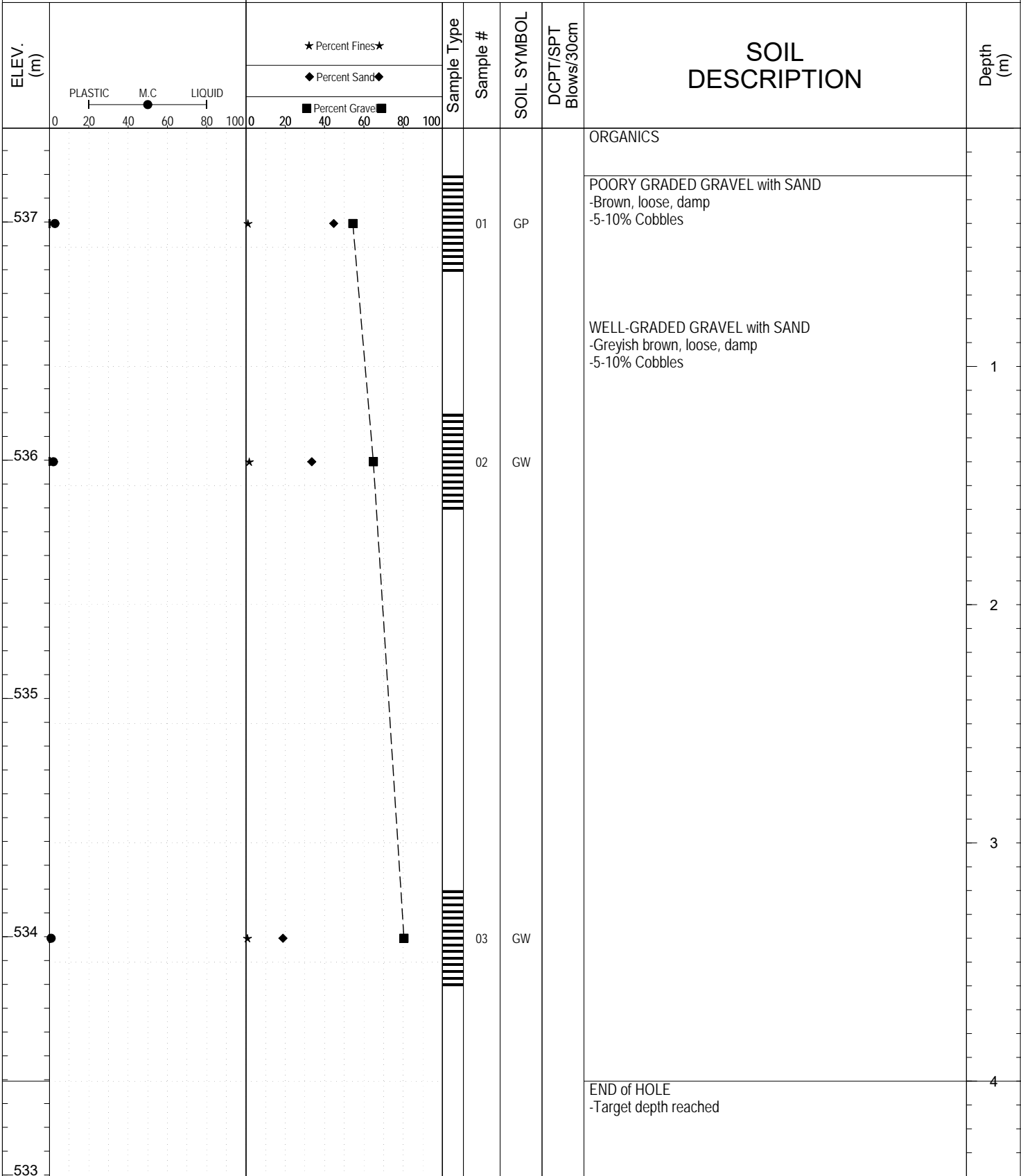
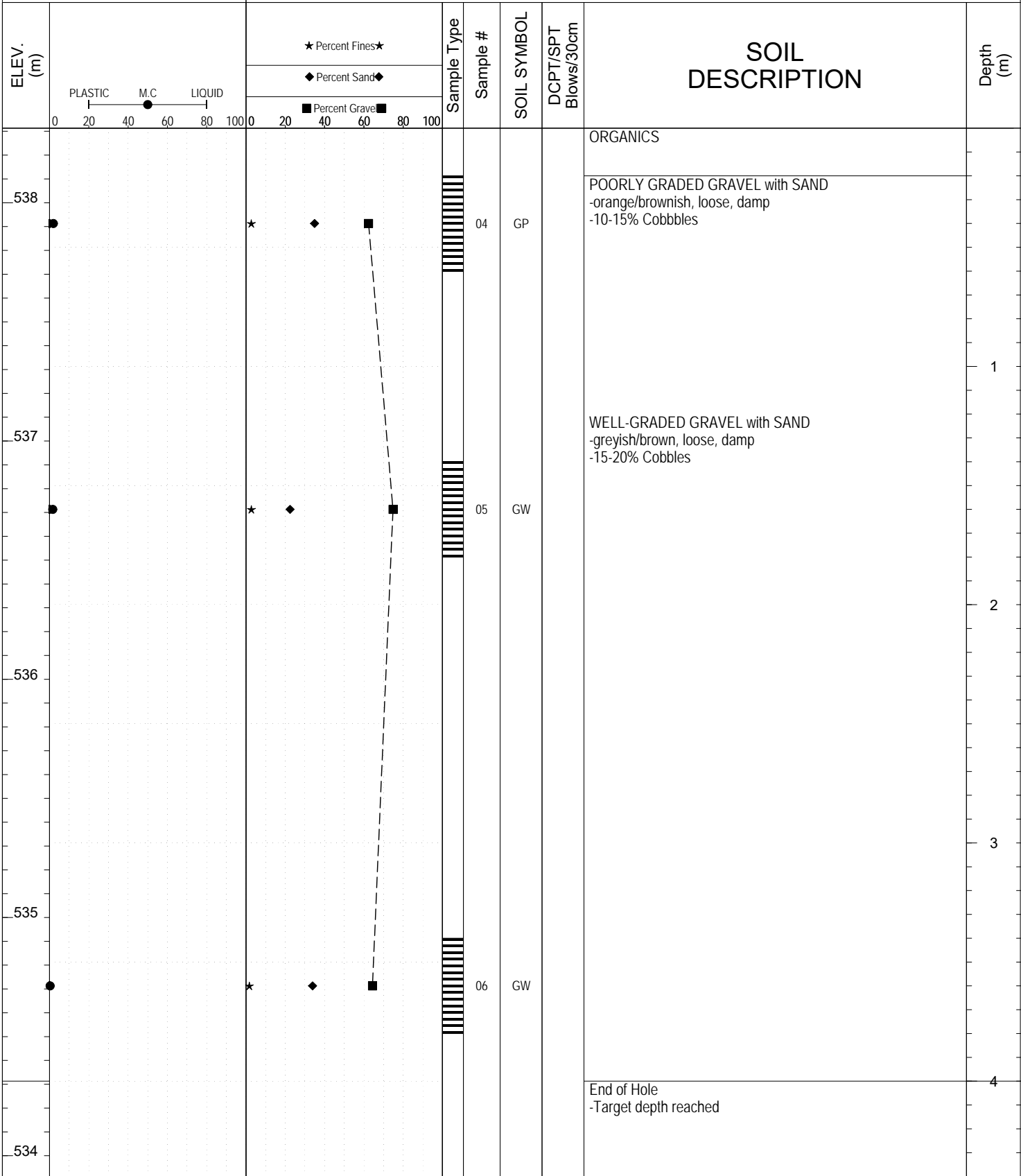


SAMPLE TYPE UNDISTURBED DCPT AUGER BULK SPT CORE



SUBSURFACE EXPLORATION AND TEST REPORT		Silver Trail Highway #11	SOURCE/TP#: TP5588
Wilfs Contracting		Silver Trail km 49.0 Test Pits,	PROJECT NO: 552-202955-5206-1
CAT Excavator 325D		Coordinates: Z8N N7053620m E455156m	ELEVATION: 538.312988m

SAMPLE TYPE UNDISTURBED DCPT AUGER BULK SPT CORE

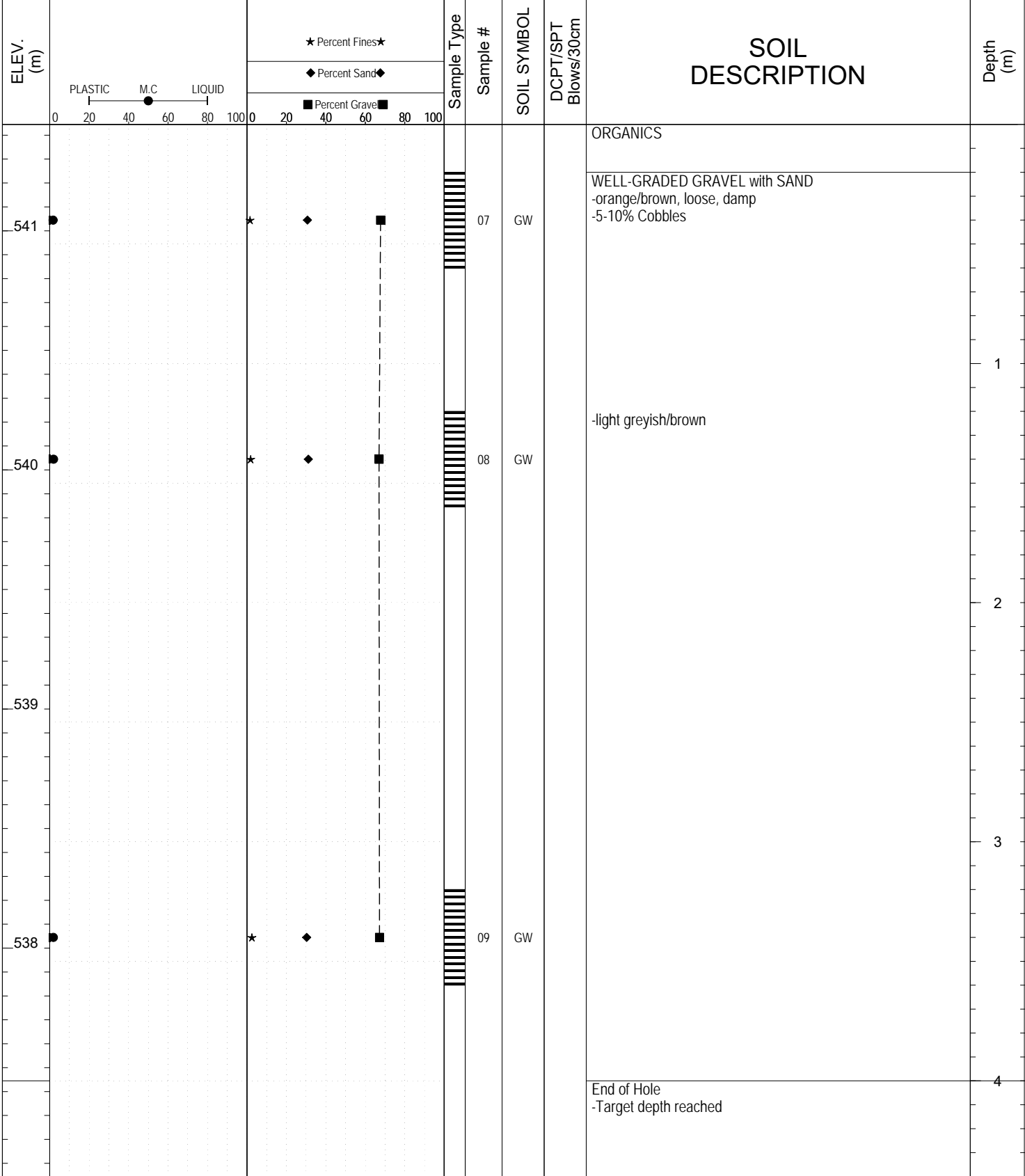


Highways and Public Works
Transportation Engineering Branch

LOGGED BY: G.Kennedy	Termination Depth: 4m
COMPILED BY: R.Kennedy-Kuiper	Complete: 5/25/2016 10:20:00 AM
REVIEWED BY: R.Stilwell	Pit #: Page 1 of 1

SUBSURFACE EXPLORATION AND TEST REPORT		Silver Trail Highway #11	SOURCE/TP#: TP5589
Wilfs Contracting		Silver Trail km 49.0 Test Pits,	PROJECT NO: 552-202955-5206-1
CAT Excavator 325D		Coordinates: Z8N N7053623m E455087m	ELEVATION: 541.444824m

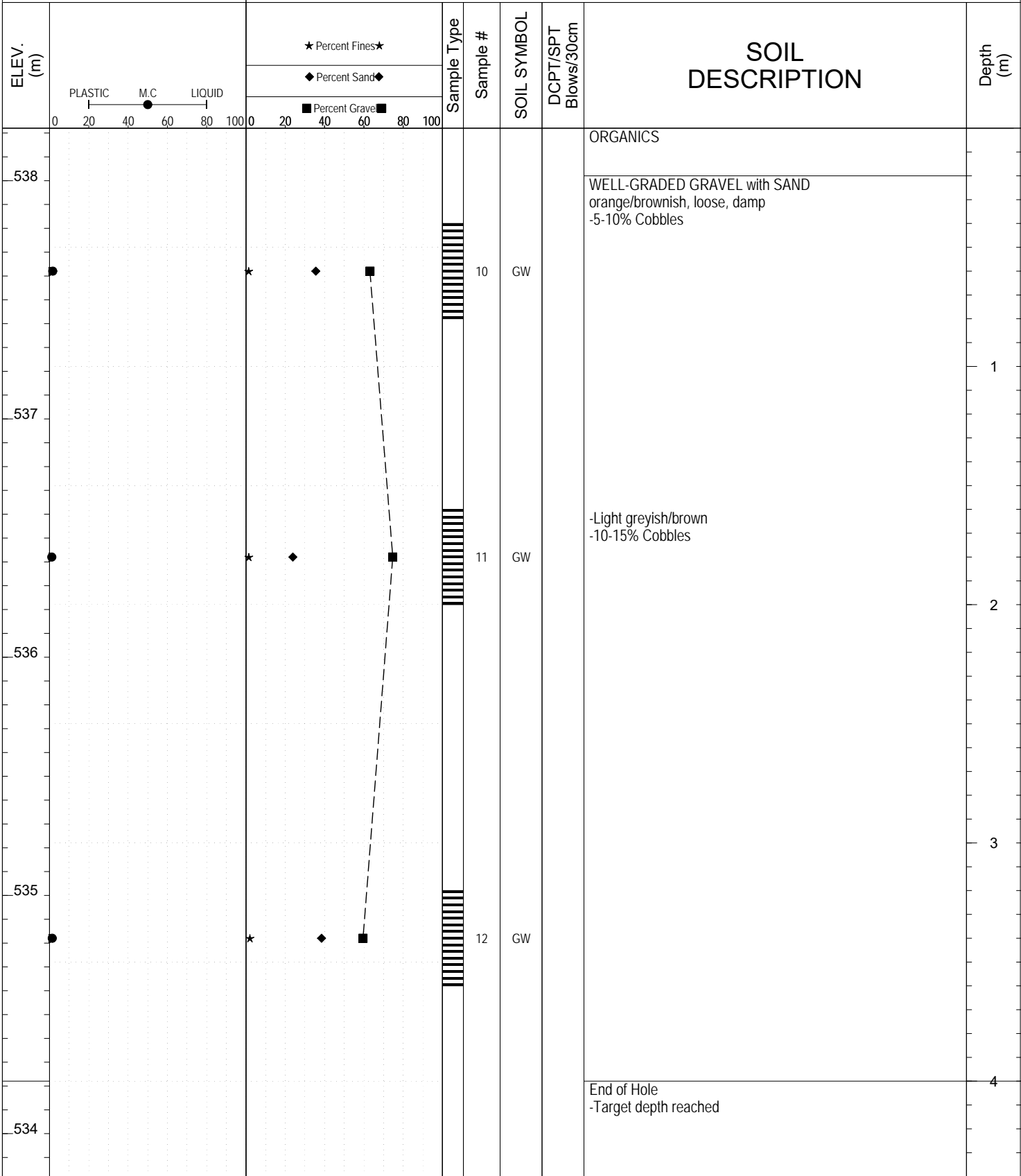
SAMPLE TYPE UNDISTURBED DCPT AUGER BULK SPT CORE



Highways and Public Works
Transportation Engineering Branch

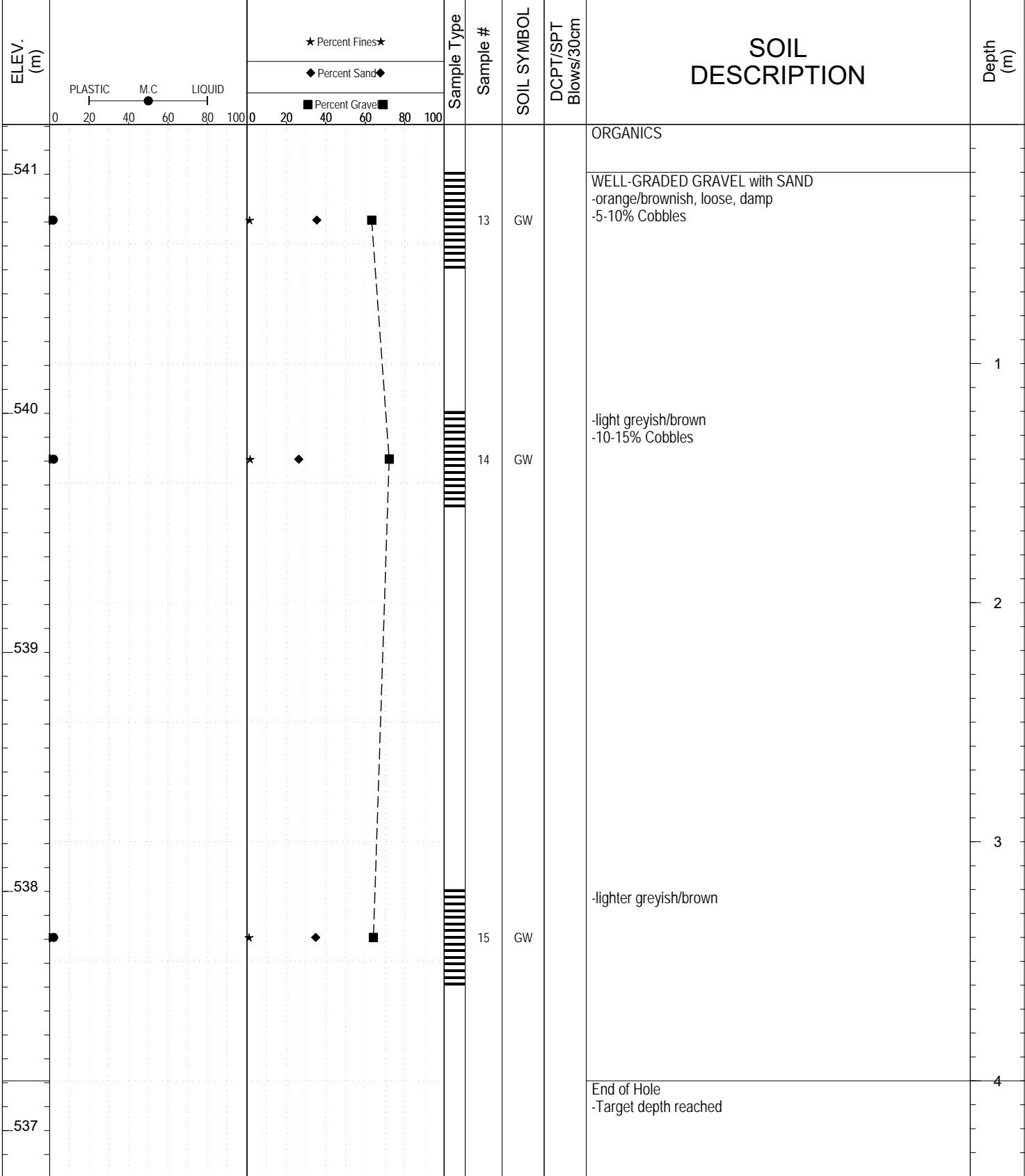
LOGGED BY: G.Kennedy	Termination Depth: 4m
COMPILED BY: R.Kennedy-Kuiper	Complete: 5/25/2016 11:10:00 AM
REVIEWED BY: R.Stilwell	Pit #: Page 1 of 1

SAMPLE TYPE UNDISTURBED DCPT AUGER BULK SPT CORE



SUBSURFACE EXPLORATION AND TEST REPORT		Silver Trail Highway #11	SOURCE/TP#: TP5591
Wilfs Contracting		Silver Trail km 49.0 Test Pits,	PROJECT NO: 552-202955-5206-1
CAT Excavator 325D		Coordinates: Z8N N7053625m E454938m	ELEVATION: 541.207947m

SAMPLE TYPE UNDISTURBED DCPT AUGER BULK SPT CORE

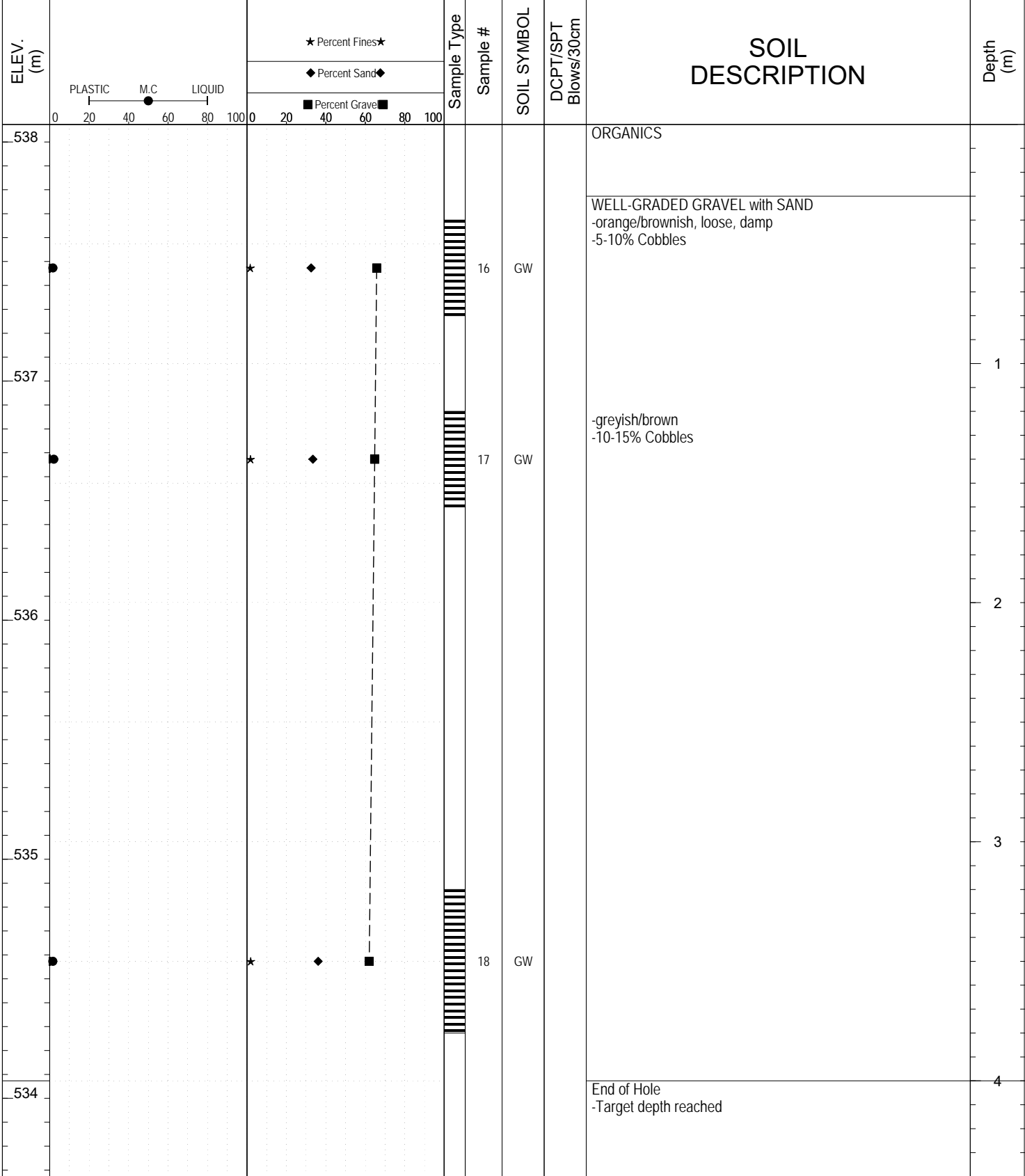


Highways and Public Works
Transportation Engineering Branch

LOGGED BY: G.Kennedy	Termination Depth: 4m
COMPILED BY: R.Kennedy-Kuiper	Complete: 5/25/2016 1:15:00 PM
REVIEWED BY: R.Stilwell	Pit #: Page 1 of 1

SUBSURFACE EXPLORATION AND TEST REPORT		Silver Trail Highway #11	SOURCE/TP#: TP5592
Wilfs Contracting		Silver Trail km 49.0 Test Pits,	PROJECT NO: 552-202955-5206-1
CAT Excavator 325D		Coordinates: Z8N N7053626m E454862m	ELEVATION: 538.073181m

SAMPLE TYPE UNDISTURBED DCPT AUGER BULK SPT CORE

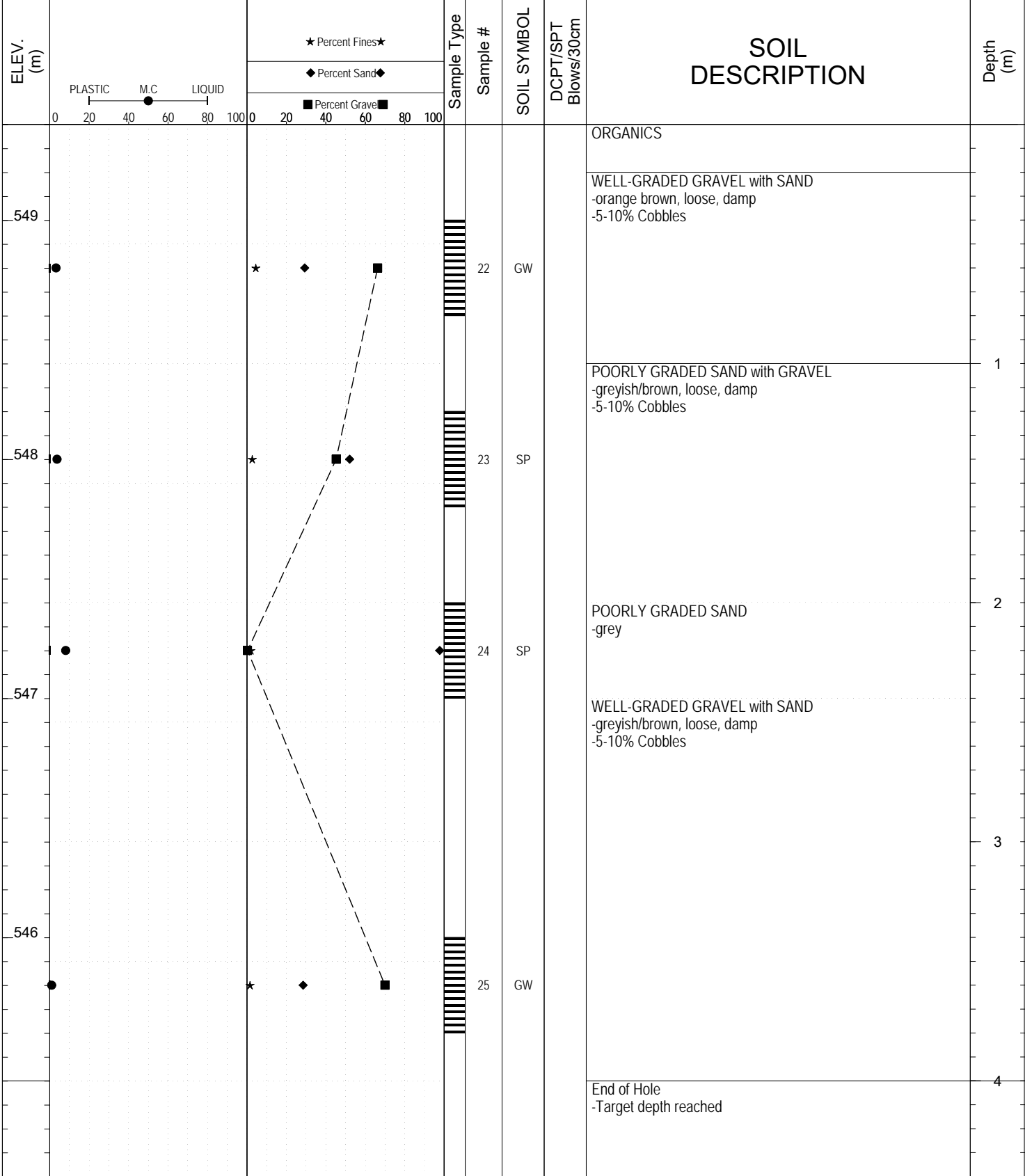


Highways and Public Works
Transportation Engineering Branch

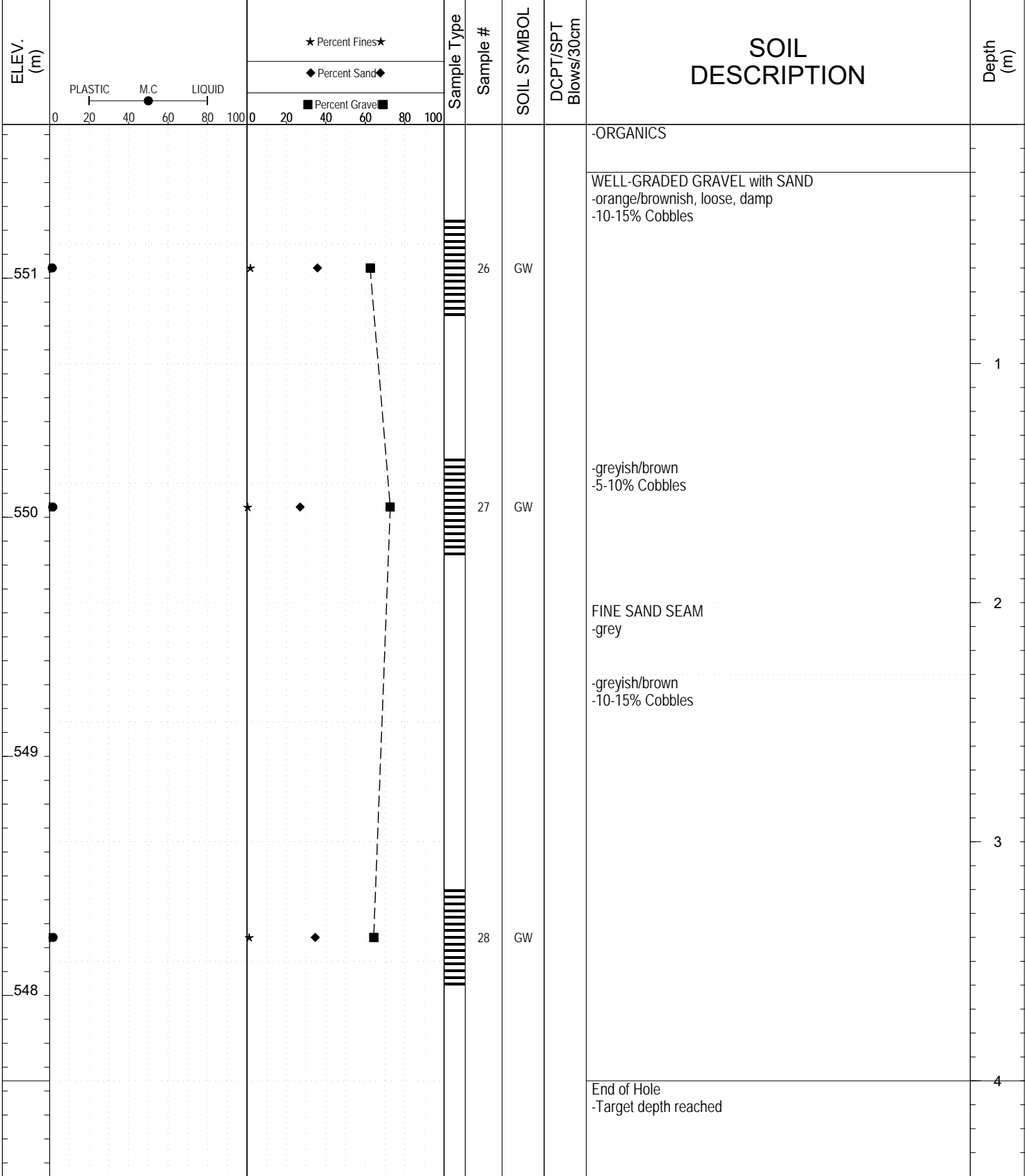
LOGGED BY: G.Kennedy	Termination Depth: 4m
COMPILED BY: R.Kennedy-Kuiper	Complete: 5/25/2016 2:05:00 PM
REVIEWED BY: R.Stilwell	Pit #: Page 1 of 1

SUBSURFACE EXPLORATION AND TEST REPORT		Silver Trail Highway #11		SOURCE/TP#: TP5593					
Wilfs Contracting		Silver Trail km 49.0 Test Pits,		PROJECT NO: 552-202955-5206-1					
CAT Excavator 325D		Coordinates: Z8N N7053702m E454787m		ELEVATION: 540.480225m					
SAMPLE TYPE		<input type="checkbox"/> UNDISTURBED <input type="checkbox"/> DCPT <input checked="" type="checkbox"/> AUGER <input type="checkbox"/> BULK <input checked="" type="checkbox"/> SPT <input type="checkbox"/> CORE							
ELEV. (m)	<div style="display: flex; justify-content: space-between;"> <div style="text-align: center;"> <p>★ Percent Fines★</p> <p>◆ Percent Sand◆</p> <p>■ Percent Gravel■</p> </div> <div style="text-align: center;"> <p>Sample Type</p> <p>Sample #</p> </div> </div>				SOIL SYMBOL	DCPT/SPT Blows/30cm	SOIL DESCRIPTION		Depth (m)
	<div style="display: flex; justify-content: space-between;"> <div style="text-align: center;"> <p>PLASTIC</p> <p>M.C</p> <p>LIQUID</p> </div> <div style="text-align: center;"> <p>0 20 40 60 80 100</p> </div> </div>								
540	★ ◆ ■		19 GW				ORGANICS		1
539	★ ◆ ■		20 GW-GM				WELL-GRADED GRAVEL -orange brownish, loose, damp -10-15% Cobbles		2
538							WELL-GRADED GRAVEL with SILT and SAND -greyish brown, loose, damp -10-15% Cobbles, odd boulder		3
537	★ ◆ ■		21 GP				POORLY GRADED GRAVEL with SAND -greyish brown, loose, damp -10-15% Cobbles, odd boulder		4
							End of Hole -Target depth reached		
		Highways and Public Works Transportation Engineering Branch		LOGGED BY: G.Kennedy		Termination Depth: 4m			
				COMPILED BY: R.Kennedy-Kuiper		Complete: 5/25/2016 3:02:00 PM			
				REVIEWED BY: R.Stilwell		Pit #:		Page 1 of 1	

SAMPLE TYPE UNDISTURBED DCPT AUGER BULK SPT CORE



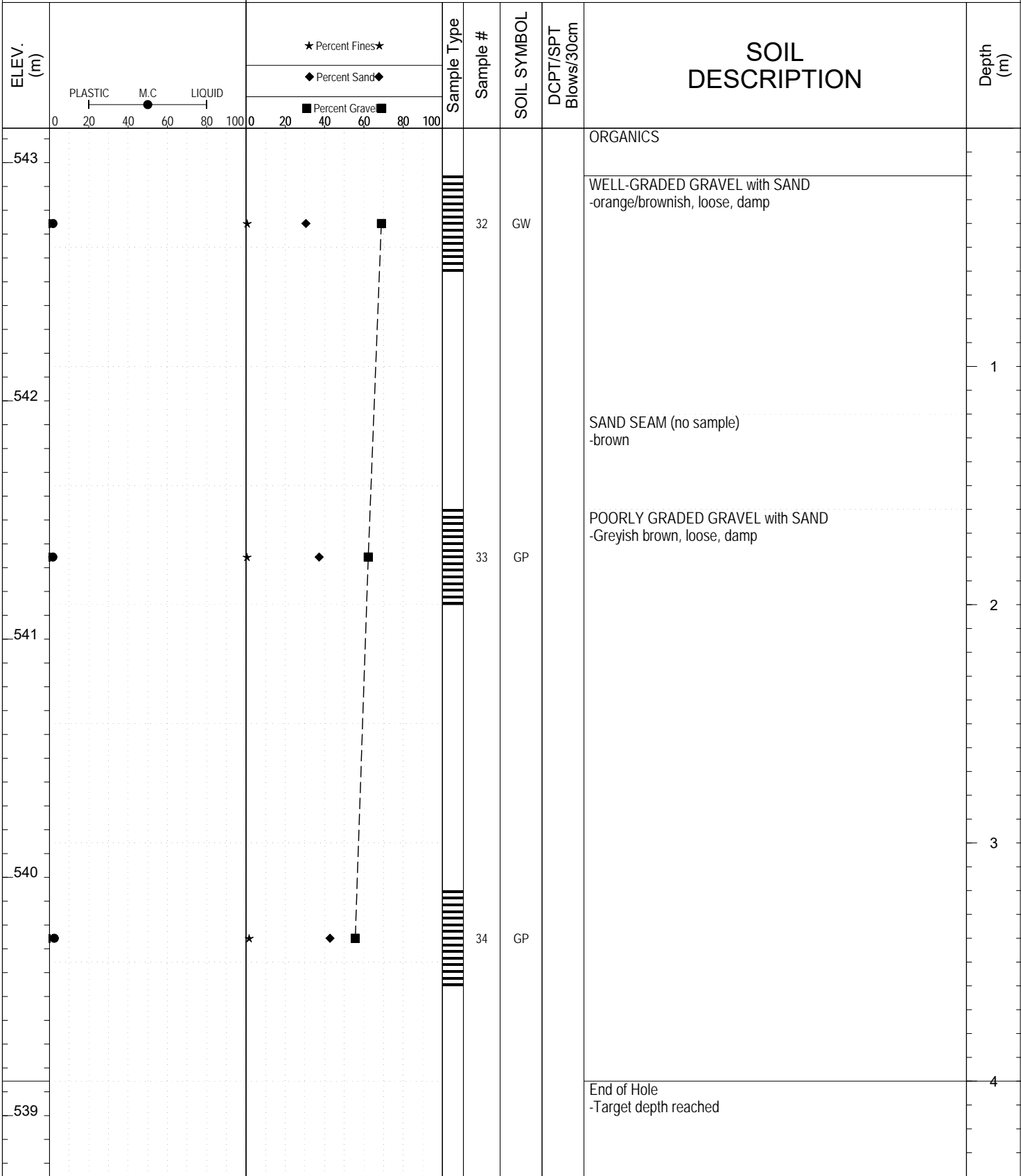
SAMPLE TYPE UNDISTURBED DCPT AUGER BULK SPT CORE



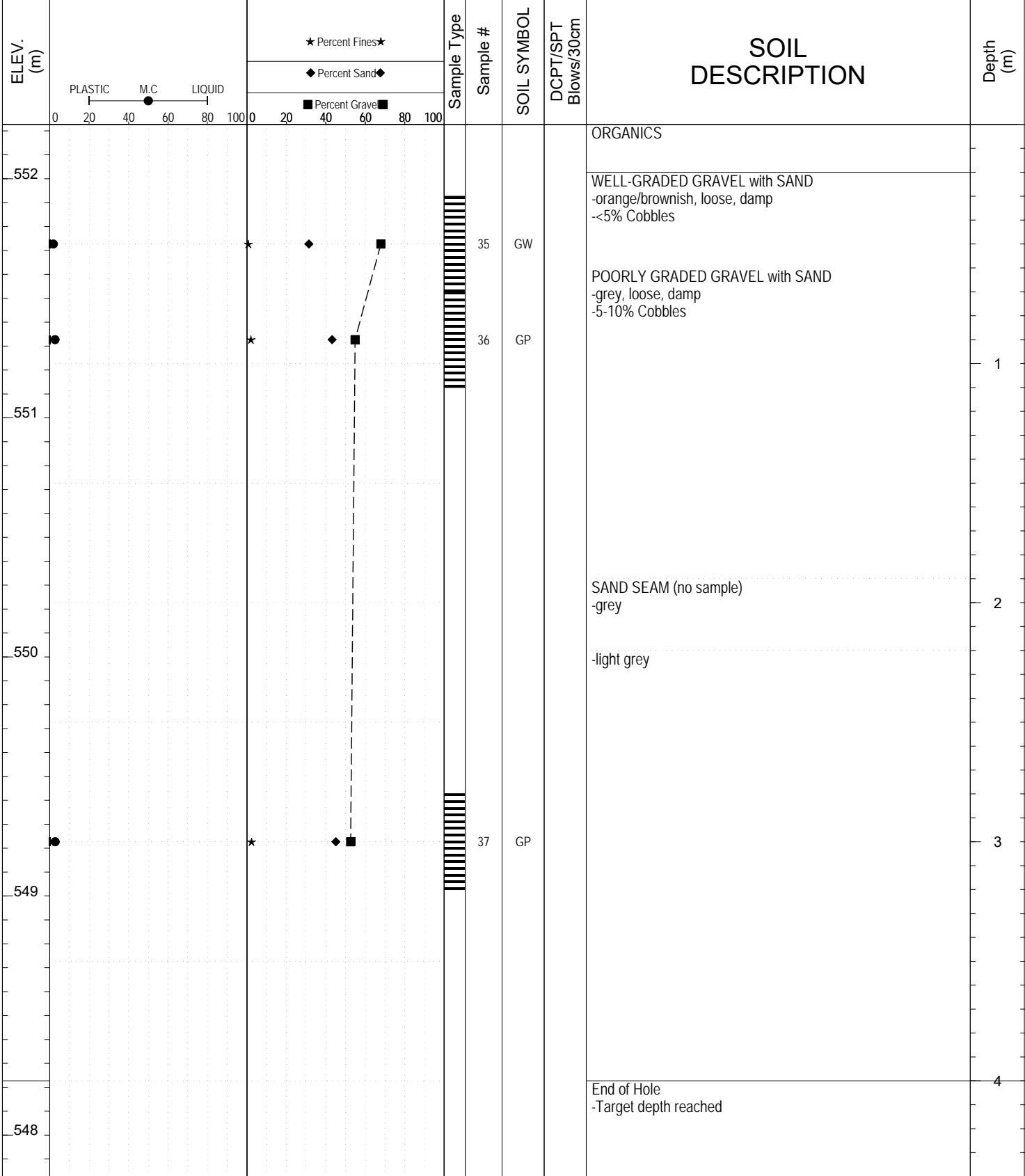
SUBSURFACE EXPLORATION AND TEST REPORT		Silver Trail Highway #11		SOURCE/TP#: TP5596									
Wilfs Contracting		Silver Trail km 49.0 Test Pits,		PROJECT NO: 552-202955-5206-1									
CAT Excavator 325D		Coordinates: Z8N N7053548m E455161m		ELEVATION: 535.178833m									
SAMPLE TYPE		UNDISTURBED		DCPT		AUGER		BULK		SPT		CORE	
ELEV. (m)	PLASTIC M.C. LIQUID		★ Percent Fines★		Sample Type	Sample #	SOIL SYMBOL	DCPT/SPT Blows/30cm	SOIL DESCRIPTION		Depth (m)		
	0 20 40 60 80 100		◆ Percent Sand◆									■ Percent Gravel■	
535			★	■		29	SW-SM		ORGANICS				
									WELL-GRADED SAND with SILT and GRAVEL -brown, loose, damp				
534			★	◆		30	GP		POORLY GRADED GRAVEL with SAND -brown, loose, dry -10-15% Cobbles		1		
											2		
533											3		
532			★	◆		31	GP				4		
531									End of Hole -Target depth reached				



SAMPLE TYPE UNDISTURBED DCPT AUGER BULK SPT CORE

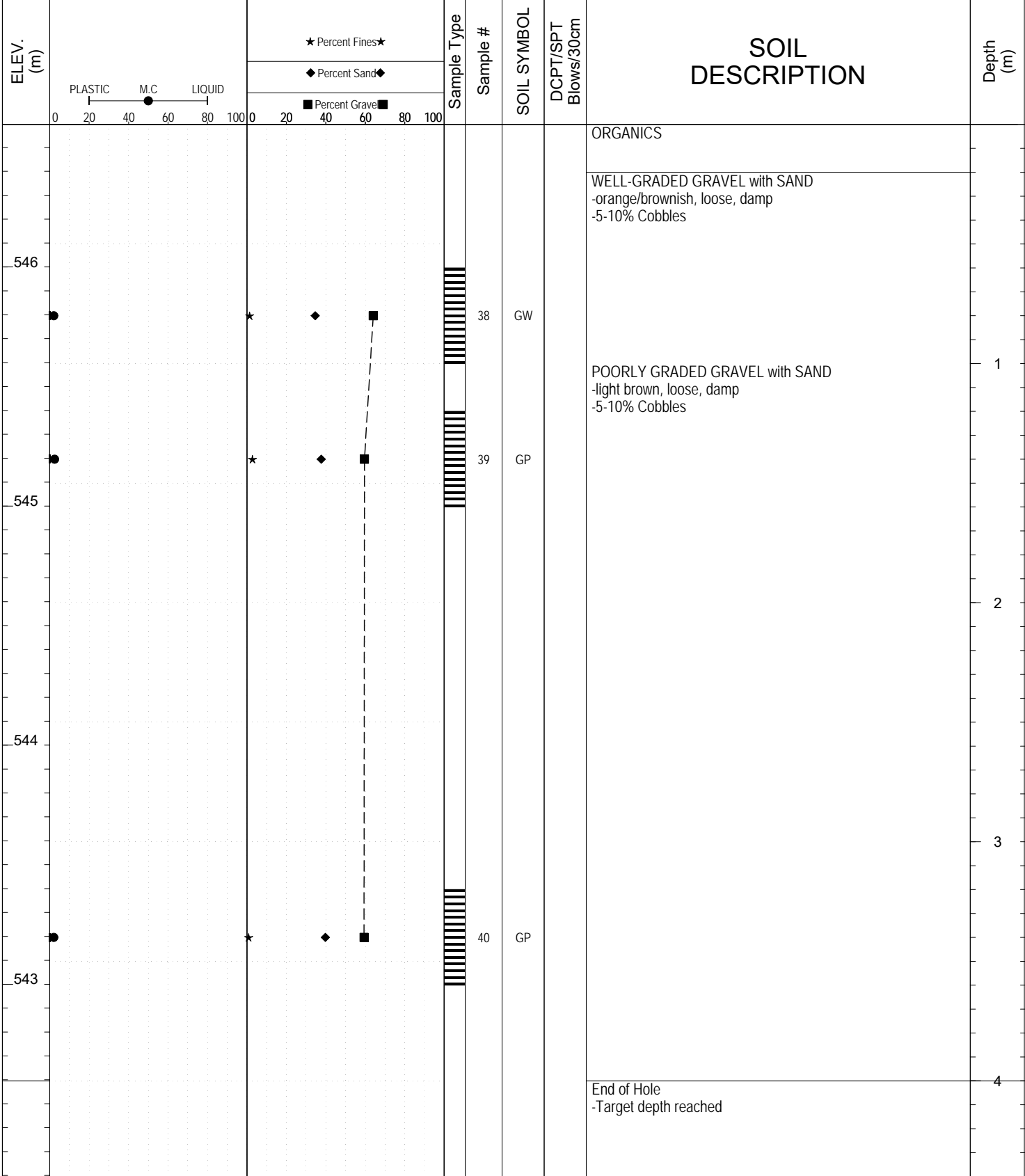


SAMPLE TYPE UNDISTURBED DCPT AUGER BULK SPT CORE



SUBSURFACE EXPLORATION AND TEST REPORT		Silver Trail Highway #11	SOURCE/TP#: TP5599
Wilfs Contracting		Silver Trail km 49.0 Test Pits,	PROJECT NO: 552-202955-5206-1
CAT Excavator 325D		Coordinates: Z8N N7053476m E455012m	ELEVATION: 546.595886m

SAMPLE TYPE UNDISTURBED DCPT AUGER BULK SPT CORE

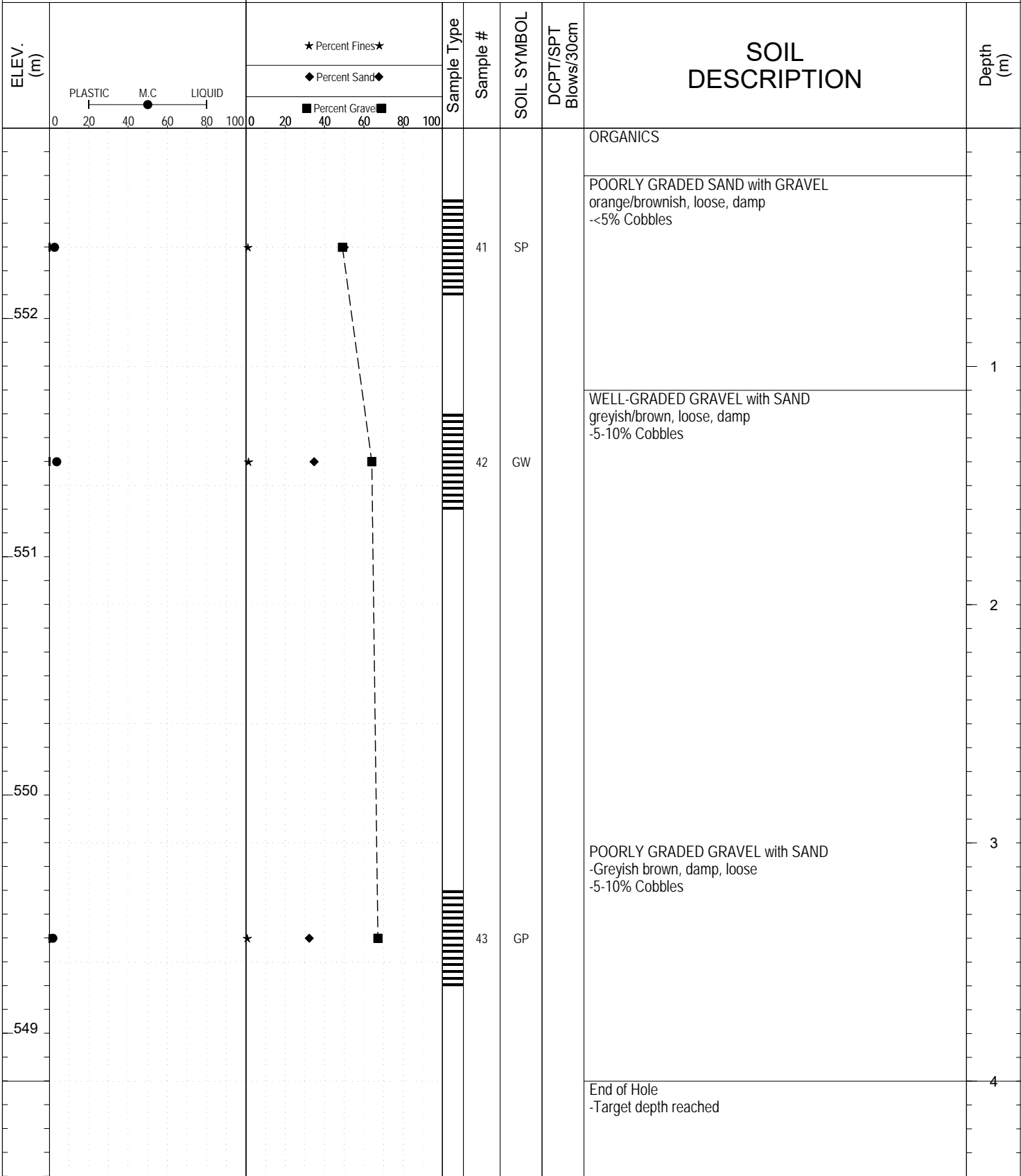


Highways and Public Works
Transportation Engineering Branch

LOGGED BY: G.Kennedy	Termination Depth: 4m
COMPILED BY: R.Kennedy-Kuiper	Complete: 5/26/2016 12:00:00 PM
REVIEWED BY: R.Stilwell	Pit #: Page 1 of 1

SUBSURFACE EXPLORATION AND TEST REPORT		Silver Trail Highway #11	SOURCE/TP#: TP5600
Wilfs Contracting		Silver Trail km 49.0 Test Pits,	PROJECT NO: 552-202955-5206-1
CAT Excavator 325D		Coordinates: Z8N N7053476m E454936m	ELEVATION: 552.798706m

SAMPLE TYPE UNDISTURBED DCPT AUGER BULK SPT CORE



Highways and Public Works
Transportation Engineering Branch

LOGGED BY: G.Kennedy	Termination Depth: 4m
COMPILED BY: R.Kennedy-Kuiper	Complete: 5/26/2016 1:08:00 PM
REVIEWED BY: R.Stilwell	Pit #: Page 1 of 1

SUBSURFACE EXPLORATION AND TEST REPORT		Silver Trail Highway #11		SOURCE/TP#: TP5601				
Wilfs Contracting		Silver Trail km 49.0 Test Pits,		PROJECT NO: 552-202955-5206-1				
CAT Excavator 325D		Coordinates: Z8N N7053475m E455086m		ELEVATION: 548.364929m				
SAMPLE TYPE	UNDISTURBED	DCPT	AUGER	BULK	SPT	CORE		
ELEV. (m)	★ Percent Fines★ ◆ Percent Sand◆ ■ Percent Gravel■		Sample Type	Sample #	SOIL SYMBOL	DCPT/SPT Blows/30cm	SOIL DESCRIPTION	Depth (m)
	PLASTIC M.C LIQUID 0 20 40 60 80 100							
548				44	GW		ORGANICS	
							WELL-GRADED GRAVEL with SAND -orange/brownish, loose, damp -5-10% Cobbles	
							-greyish/brown, loose, damp -10-15% Cobbles	1
547				45	GW			
							SAND SEAM, trace GRAVEL and SILT grey	2
546				46	SP			
							POORLY GRADED SAND -greyish/brown, damp, loose -10-15% Cobbles	
							-grey	3
545				47	SP			
							End of Hole -Target depth reached	4
544								



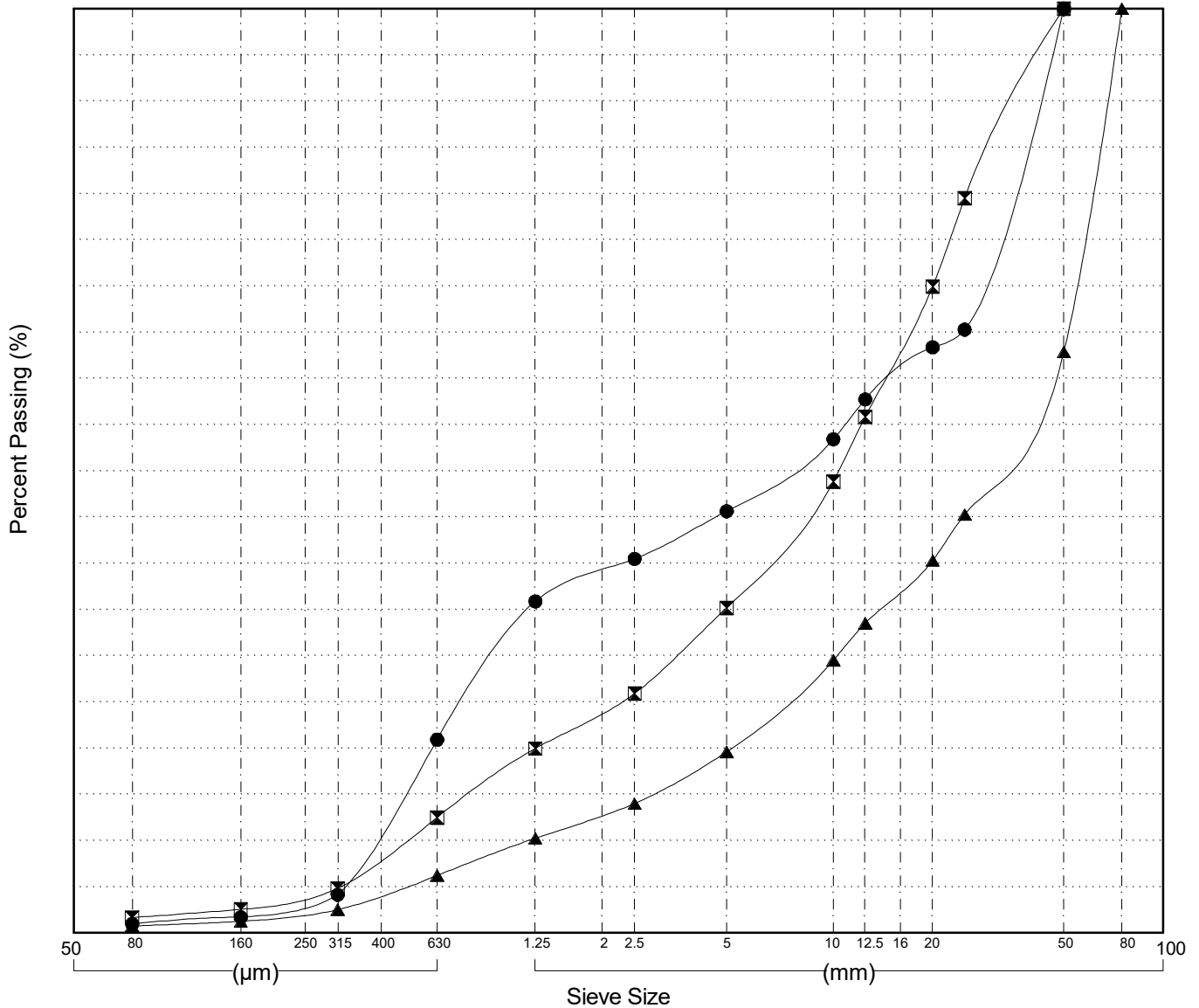
GRAIN SIZE ANALYSIS	Silver Trail km 49.0 Test Pits	SOURCE/TP#: TP5587
Wilfs Contracting		PROJECT NO: 552-202955-5206-1
CAT Excavator 325D	Coordinates: Z8N N7053696m E455084m	ELEVATION: 537.393738m

Master Revised July 2013

Field#	Lab#	Depth	Classification	%H2O	LL	PL	PI	Cc	Cu
● 01	2016-011	0.2 to 0.6	POORLY GRADED GRAVEL with SAND(GP)	2.7	NP	NP	NP	0.2	37.6
☒ 02	2016-012	1.2 to 1.6	WELL-GRADED GRAVEL with SAND(GW)	2.0	NP	NP	NP	1.5	28.6
▲ 03	2016-013	3.2 to 3.6	WELL-GRADED GRAVEL with SAND(GW)	0.8	NP	NP	NP	2.0	37.3

Field#	Lab#	% PASSING	Sieve Size														% Breakdown		
			100.0	80.0	50.0	25.0	20.0	12.5	10.0	5.0	2.5	1.25	0.630	0.315	0.160	0.080	Gravel	Sand	Silt/Clay
● 01	2016-011	100.0	100.0	100.0	65.3	63.4	57.7	53.4	45.6	40.5	35.9	20.9	4.1	1.7	1.0	54.4	44.7	1.0	
☒ 02	2016-012	100.0	100.0	100.0	79.5	69.9	55.9	48.8	35.2	25.9	20.0	12.5	4.8	2.6	1.7	64.8	33.5	1.7	
▲ 03	2016-013	100.0	100.0	62.9	45.3	40.3	33.5	29.5	19.6	14.0	10.3	6.2	2.5	1.3	0.8	80.4	18.8	0.8	

Silt	Sand			Gravel	
	Fine	Medium	Coarse	Fine	Coarse



Highways and Public Works
Transportation Engineering Branch

LOGGED BY: G.Kennedy
COMPILED BY: R.Kennedy-Kuiper
REVIEWED BY: R.Stilwell

Pit #
Complete: 5/25/2016 9:20:00 AM

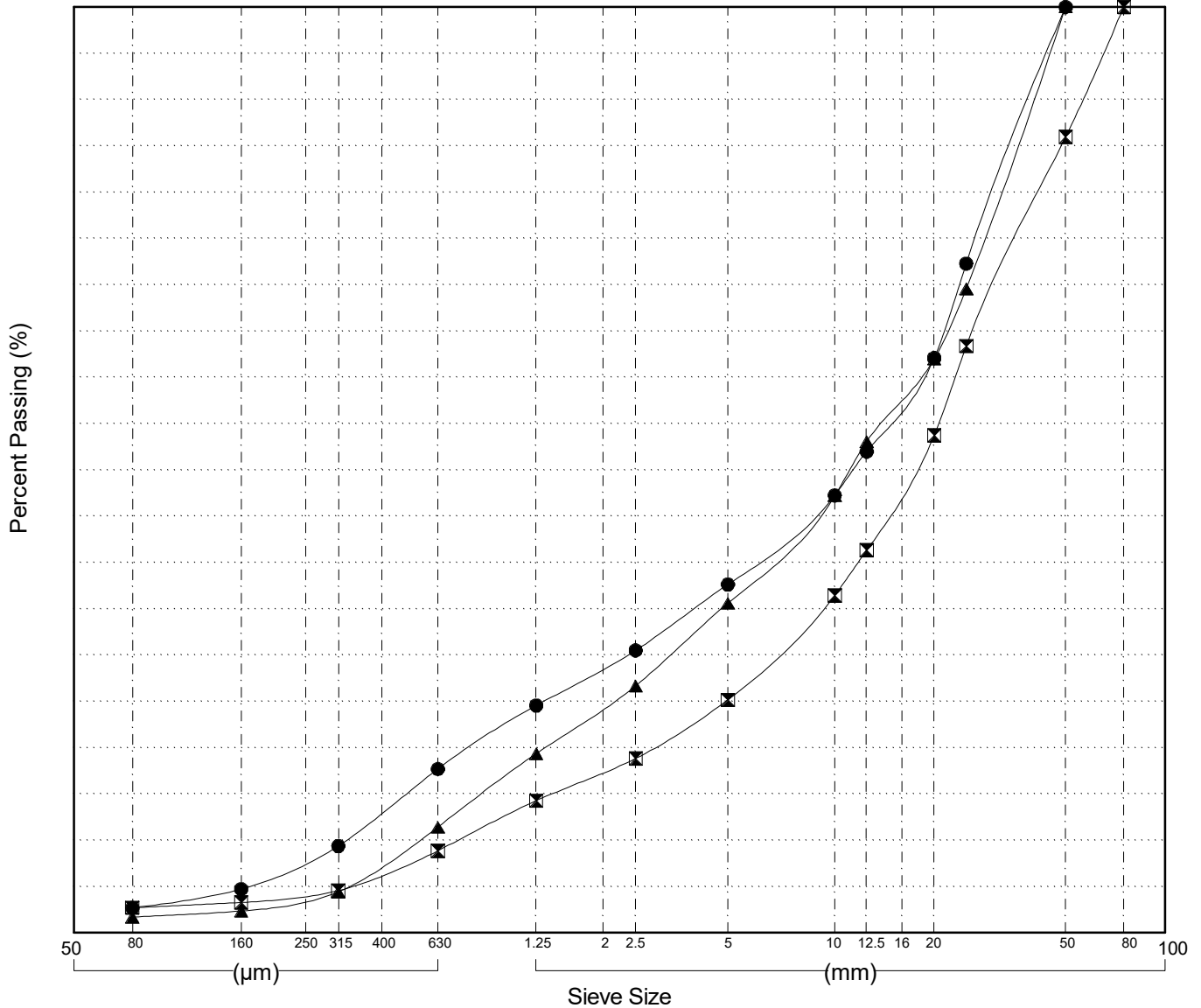
GRAIN SIZE ANALYSIS	Silver Trail km 49.0 Test Pits	SOURCE/TP#: TP5588
Wilfs Contracting		PROJECT NO: 552-202955-5206-1
CAT Excavator 325D	Coordinates: Z8N N7053620m E455156m	ELEVATION: 538.312988m

Master Revised July 2013

Field#	Lab#	Depth	Classification	%H2O	LL	PL	PI	Cc	Cu
● 04	2016-014	0.2 to 0.6	POORLY GRADED GRAVEL with SAND(GP)	1.9	NP	NP	NP	0.9	54.7
☒ 05	2016-015	1.4 to 1.8	WELL-GRADED GRAVEL with SAND(GW)	1.7	NP	NP	NP	2.5	31.8
▲ 06	2016-016	3.4 to 3.8	WELL-GRADED GRAVEL with SAND(GW)	0.3	NP	NP	NP	1.0	32.9

Field#	Lab#	% PASSING														% Breakdown			
		100.0	80.0	50.0	25.0	20.0	12.5	10.0	5.0	2.5	1.25	0.630	0.315	0.160	0.080	Gravel	Sand	Silt	Clay
● 04	2016-014	100.0	100.0	100.0	72.3	62.1	52.0	47.2	37.6	30.5	24.6	17.7	9.4	4.7	2.7	62.4	34.9	2.7	
☒ 05	2016-015	100.0	100.0	85.9	63.4	53.7	41.3	36.4	25.2	18.8	14.3	8.9	4.6	3.3	2.7	74.8	22.4	2.7	
▲ 06	2016-016	100.0	100.0	100.0	69.6	62.0	53.0	47.2	35.6	26.7	19.4	11.4	4.4	2.4	1.7	64.4	33.9	1.7	

Silt	Sand			Gravel	
	Fine	Medium	Coarse	Fine	Coarse



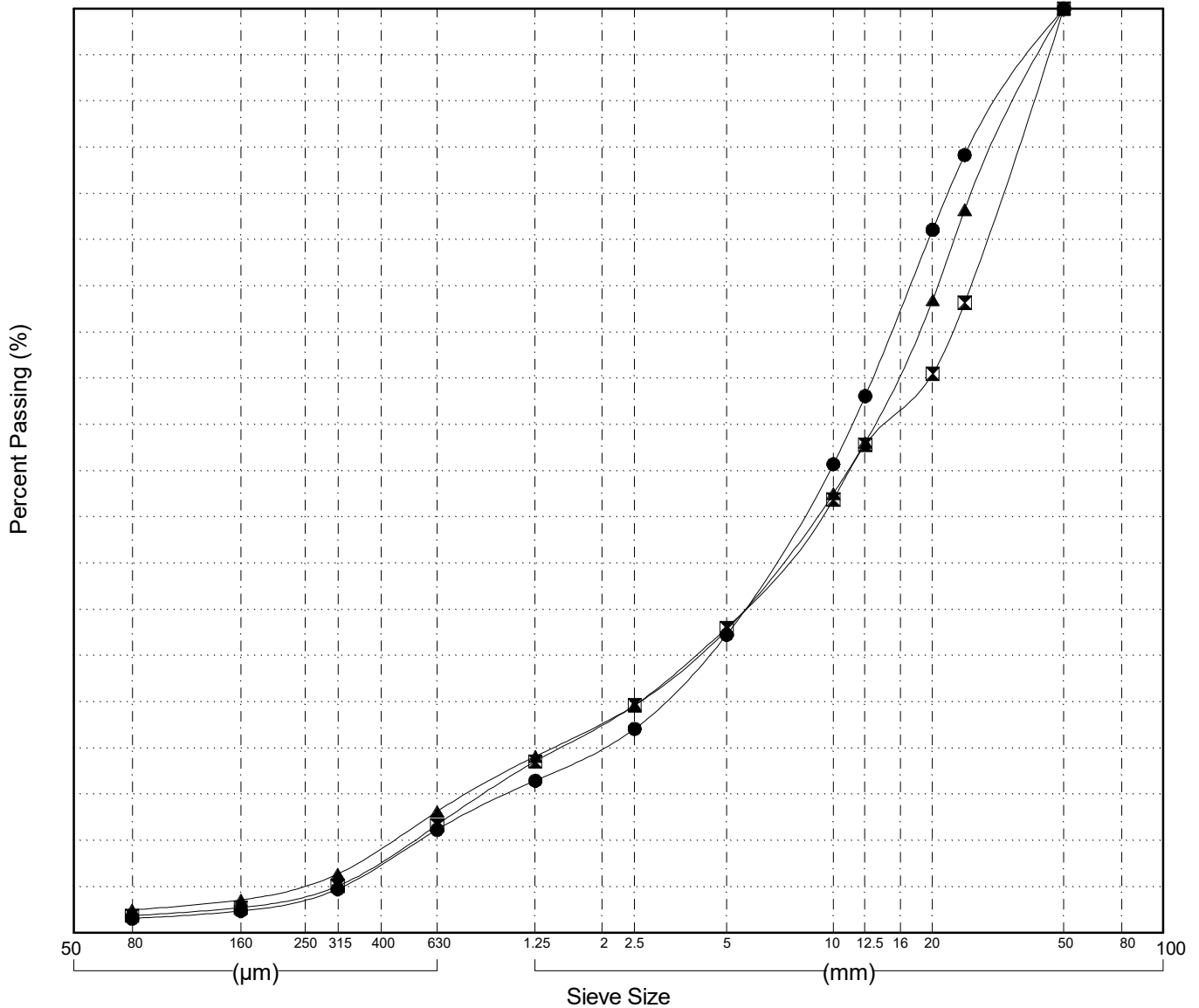
GRAIN SIZE ANALYSIS	Silver Trail km 49.0 Test Pits	SOURCE/TP#: TP5589
Wilfs Contracting		PROJECT NO: 552-202955-5206-1
CAT Excavator 325D	Coordinates: Z8N N7053623m E455087m	ELEVATION: 541.444824m

Master Revised July 2013

Field#	Lab#	Depth	Classification	%H2O	LL	PL	PI	Cc	Cu
● 07	2016-017	0.2 to 0.6	WELL-GRADED GRAVEL with SAND(GW)	1.7	NP	NP	NP	2.3	23.7
☒ 08	2016-018	1.2 to 1.6	WELL-GRADED GRAVEL with SAND(GW)	1.9	NP	NP	NP	1.4	36.7
▲ 09	2016-019	3.2 to 3.6	WELL-GRADED GRAVEL with SAND(GW)	1.8	NP	NP	NP	2.1	33.8

Field#	Lab#	% PASSING	Sieve Size (mm)													% Breakdown		
			100.0	80.0	50.0	25.0	20.0	12.5	10.0	5.0	2.5	1.25	0.630	0.315	0.160	0.080	Gravel	Sand
● 07	2016-017	100.0	100.0	100.0	84.2	76.1	58.1	50.7	32.3	22.1	16.5	11.2	4.8	2.4	1.6	67.7	30.7	1.6
☒ 08	2016-018	100.0	100.0	100.0	68.2	60.5	52.8	46.9	33.0	24.6	18.6	11.7	5.1	2.7	1.9	67.0	31.1	1.9
▲ 09	2016-019	100.0	100.0	100.0	78.2	68.5	53.1	47.5	32.8	24.6	19.1	13.1	6.4	3.6	2.5	67.2	30.3	2.5

Silt	Sand			Gravel	
	Fine	Medium	Coarse	Fine	Coarse



Highways and Public Works
Transportation Engineering Branch

LOGGED BY: G.Kennedy
COMPILED BY: R.Kennedy-Kuiper
REVIEWED BY: R.Stilwell

Pit #
Complete: 5/25/2016 11:10:00 AM
Page 1 of 1

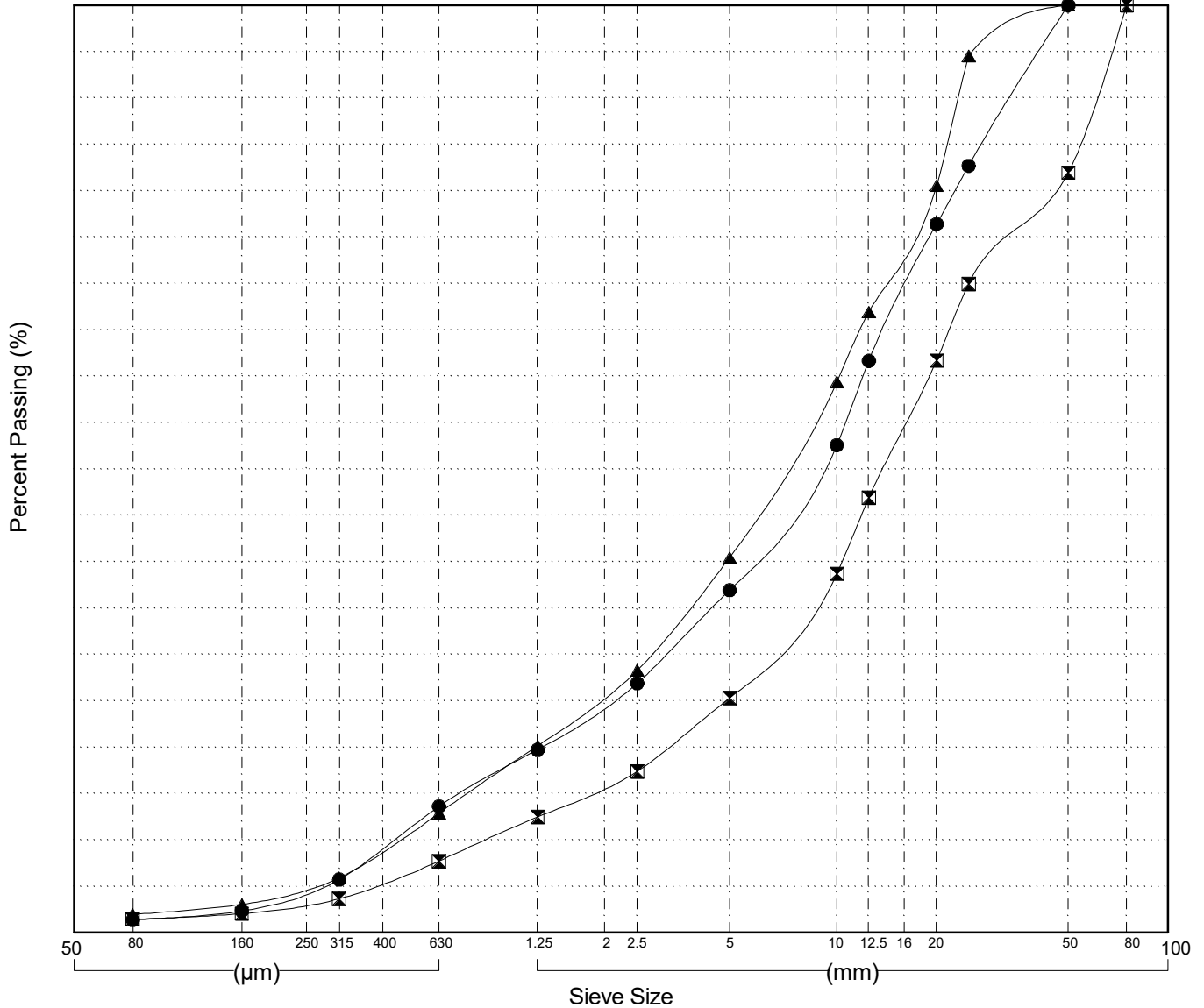
GRAIN SIZE ANALYSIS	Silver Trail km 49.0 Test Pits	SOURCE/TP#: TP5590
Wilfs Contracting		PROJECT NO: 552-202955-5206-1
CAT Excavator 325D	Coordinates: Z8N N7053626m E455012m	ELEVATION: 538.220337m

Master Revised July 2013

Field#	Lab#	Depth	Classification	%H2O	LL	PL	PI	Cc	Cu
● 10	2016-020	0.4 to 0.8	WELL-GRADED GRAVEL with SAND(GW)	1.6	NP	NP	NP	1.7	26.2
☒ 11	2016-021	1.6 to 2.0	WELL-GRADED GRAVEL with SAND(GW)	1.2	NP	NP	NP	2.3	21.7
▲ 12	2016-022	3.2 to 3.6	WELL-GRADED GRAVEL with SAND(GW)	1.4	NP	NP	NP	1.6	21.5

Field#	Lab#	% PASSING	Sieve Size (mm)													% Breakdown			
			100.0	80.0	50.0	25.0	20.0	12.5	10.0	5.0	2.5	1.25	0.630	0.315	0.160	0.080	Gravel	Sand	Silt
● 10	2016-020	100.0	100.0	100.0	82.7	76.4	61.7	52.6	36.9	26.9	19.7	13.6	5.7	2.3	1.4	63.1	35.5	1.4	
☒ 11	2016-021	100.0	100.0	81.9	69.9	61.7	46.9	38.7	25.3	17.4	12.5	7.7	3.7	2.1	1.4	74.7	23.9	1.4	
▲ 12	2016-022	100.0	100.0	100.0	94.5	80.5	66.9	59.4	40.4	28.3	20.1	12.9	5.9	3.1	2.0	59.6	38.5	2.0	

Silt	Sand			Gravel	
	Fine	Medium	Coarse	Fine	Coarse



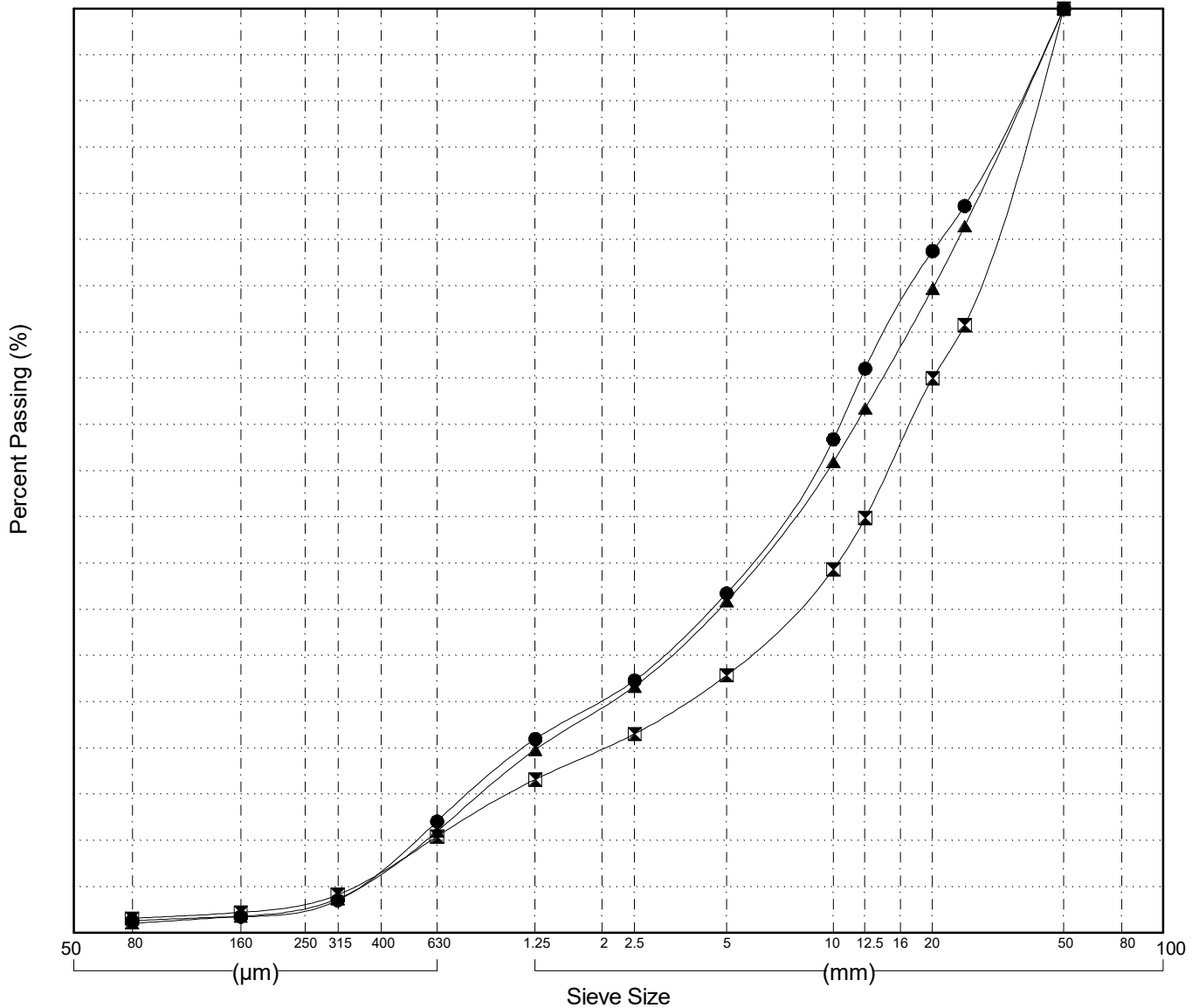
GRAIN SIZE ANALYSIS	Silver Trail km 49.0 Test Pits	SOURCE/TP#: TP5591
Wilfs Contracting		PROJECT NO: 552-202955-5206-1
CAT Excavator 325D	Coordinates: Z8N N7053625m E454938m	ELEVATION: 541.207947m

Master Revised July 2013

Field#	Lab#	Depth	Classification	%H2O	LL	PL	PI	Cc	Cu
● 13	2016-023	0.2 to 0.6	WELL-GRADED GRAVEL with SAND(GW)	1.7	NP	NP	NP	1.4	22.8
☒ 14	2106-024	1.2 to 1.6	WELL-GRADED GRAVEL with SAND(GW)	1.9	NP	NP	NP	2.5	33.3
▲ 15	2016-025	3.2 to 3.6	WELL-GRADED GRAVEL with SAND(GW)	2.0	NP	NP	NP	1.2	24.5

Field#	Lab#	% PASSING	Sieve Size (mm)													% Breakdown			
			100.0	80.0	50.0	25.0	20.0	12.5	10.0	5.0	2.5	1.25	0.630	0.315	0.160	0.080	Gravel	Sand	Silt
● 13	2016-023	100.0	100.0	100.0	100.0	78.7	73.8	61.1	53.4	36.8	27.3	21.0	12.1	3.5	1.8	1.3	63.2	35.4	1.3
☒ 14	2106-024	100.0	100.0	100.0	65.8	60.0	44.9	39.4	27.9	21.5	16.6	10.4	4.1	2.2	1.6	72.1	26.3	1.6	
▲ 15	2016-025	100.0	100.0	100.0	76.5	69.7	56.8	50.9	35.9	26.7	19.8	11.0	3.7	1.8	1.0	64.1	34.8	1.0	

Silt	Sand			Gravel	
	Fine	Medium	Coarse	Fine	Coarse



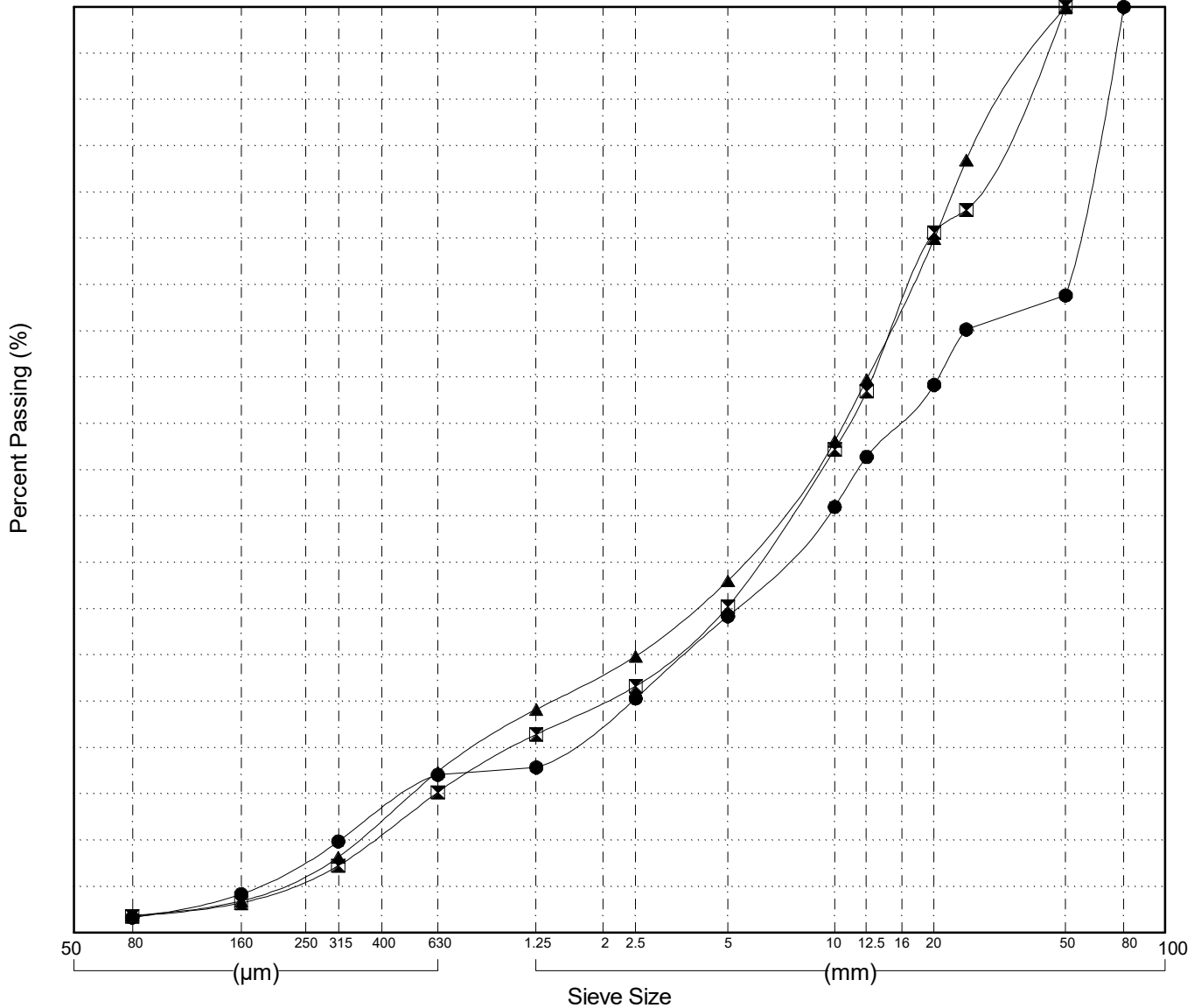
GRAIN SIZE ANALYSIS	Silver Trail km 49.0 Test Pits	SOURCE/TP#: TP5592
Wilfs Contracting		PROJECT NO: 552-202955-5206-1
CAT Excavator 325D	Coordinates: Z8N N7053626m E454862m	ELEVATION: 538.073181m

Master Revised July 2013

Field#	Lab#	Depth	Classification	%H2O	LL	PL	PI	Cc	Cu
● 16	2016-026	0.4 to 0.8	WELL-GRADED GRAVEL with SAND(GW)	1.6	NP	NP	NP	1.9	64.7
☒ 17	2016-027	1.2 to 1.6	WELL-GRADED GRAVEL with SAND(GW)	2.1	NP	NP	NP	2.0	32.5
▲ 18	2016-028	3.2 to 3.8	WELL-GRADED GRAVEL with SAND(GW)	1.6	NP	NP	NP	1.4	34.8

Field#	Lab#	% PASSING														% Breakdown			
		100.0	80.0	50.0	25.0	20.0	12.5	10.0	5.0	2.5	1.25	0.630	0.315	0.160	0.080	Gravel	Sand	Silt	Clay
● 16	2016-026	100.0	100.0	68.8	65.2	59.2	51.4	46.0	34.2	25.3	17.9	17.1	9.9	4.2	1.7	65.8	32.5	1.7	
☒ 17	2016-027	100.0	100.0	100.0	78.1	75.6	58.5	52.2	35.2	26.6	21.4	15.2	7.3	3.2	1.8	64.8	33.4	1.8	
▲ 18	2016-028	100.0	100.0	100.0	83.5	75.0	59.8	53.1	38.0	29.9	24.1	17.4	8.2	3.4	1.9	62.0	36.1	1.9	

Silt	Sand			Gravel	
	Fine	Medium	Coarse	Fine	Coarse



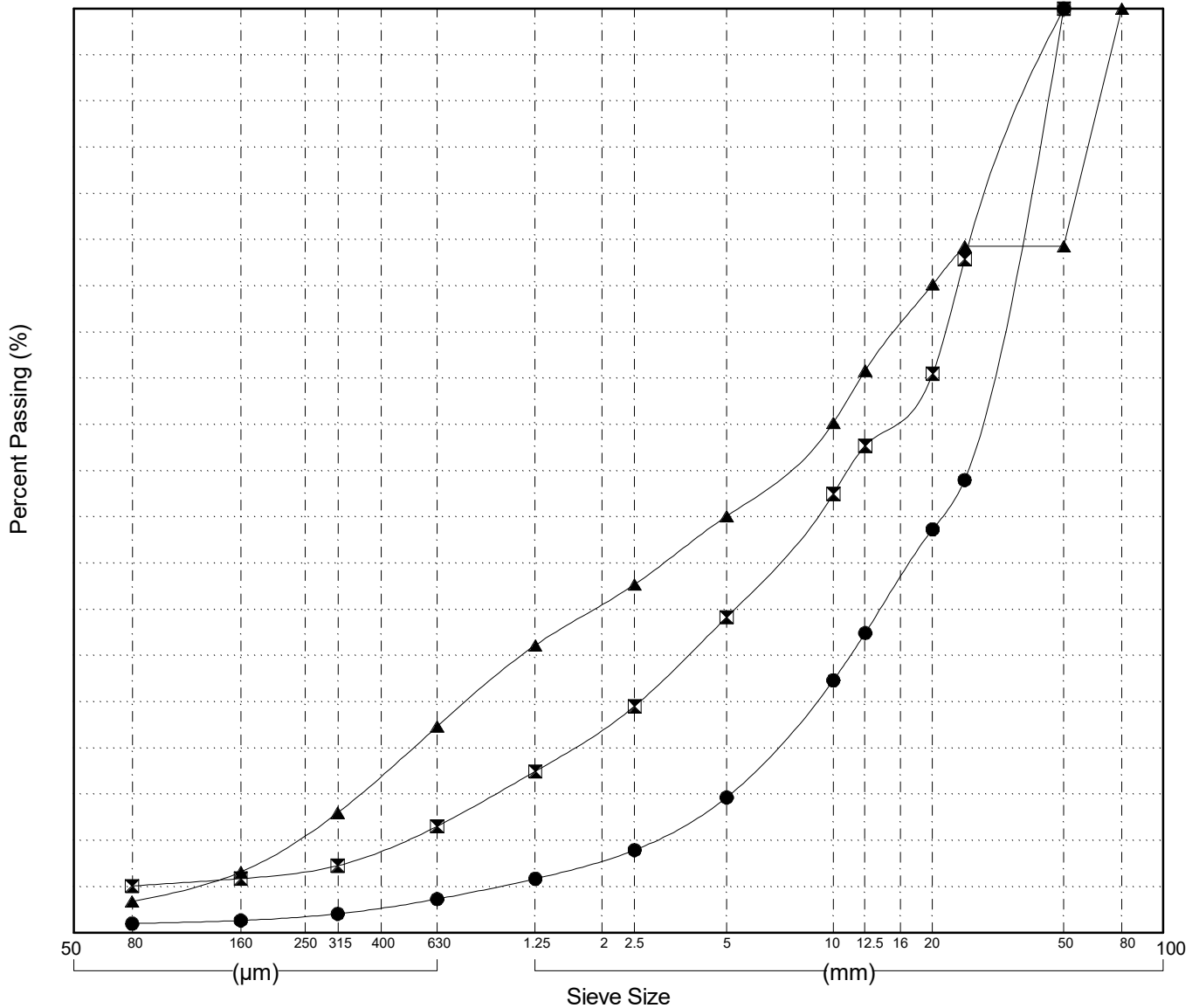
GRAIN SIZE ANALYSIS	Silver Trail km 49.0 Test Pits	SOURCE/TP#: TP5593
Wilfs Contracting		PROJECT NO: 552-202955-5206-1
CAT Excavator 325D	Coordinates: Z8N N7053702m E454787m	ELEVATION: 540.480225m

Master Revised July 2013

Field#	Lab#	Depth	Classification	%H2O	LL	PL	PI	Cc	Cu
● 19	2016-029	0.3 to 0.7	WELL-GRADED GRAVEL(GW)	1.7	NP	NP	NP	1.5	10.3
☒ 20	2016-030	1.4 to 1.8	WELL-GRADED GRAVEL with SILT and SAND(GW-GM)	2.7	NP	NP	NP	1.4	39.6
▲ 21	2016-031	3.4 to 3.8	POORLY GRADED GRAVEL with SAND(GP)	2.4	NP	NP	NP	0.5	52.7

Field#	Lab#	% PASSING	100.0	80.0	50.0	25.0	20.0	12.5	10.0	5.0	2.5	1.25	0.630	0.315	0.160	0.080	% Breakdown			
			Gravel	Sand	Silt	Clay														
● 19	2016-029	100.0	100.0	100.0	49.0	43.7	32.5	27.3	14.7	9.0	5.9	3.7	2.1	1.4	1.0	85.3	13.6	1.0		
☒ 20	2016-030	100.0	100.0	100.0	72.9	60.5	52.7	47.5	34.2	24.5	17.5	11.5	7.3	5.9	5.1	65.8	29.1	5.1		
▲ 21	2016-031	100.0	100.0	74.3	74.3	70.2	60.8	55.2	45.1	37.7	31.1	22.3	13.0	6.6	3.4	54.9	41.7	3.4		

Silt	Sand			Gravel	
	Fine	Medium	Coarse	Fine	Coarse



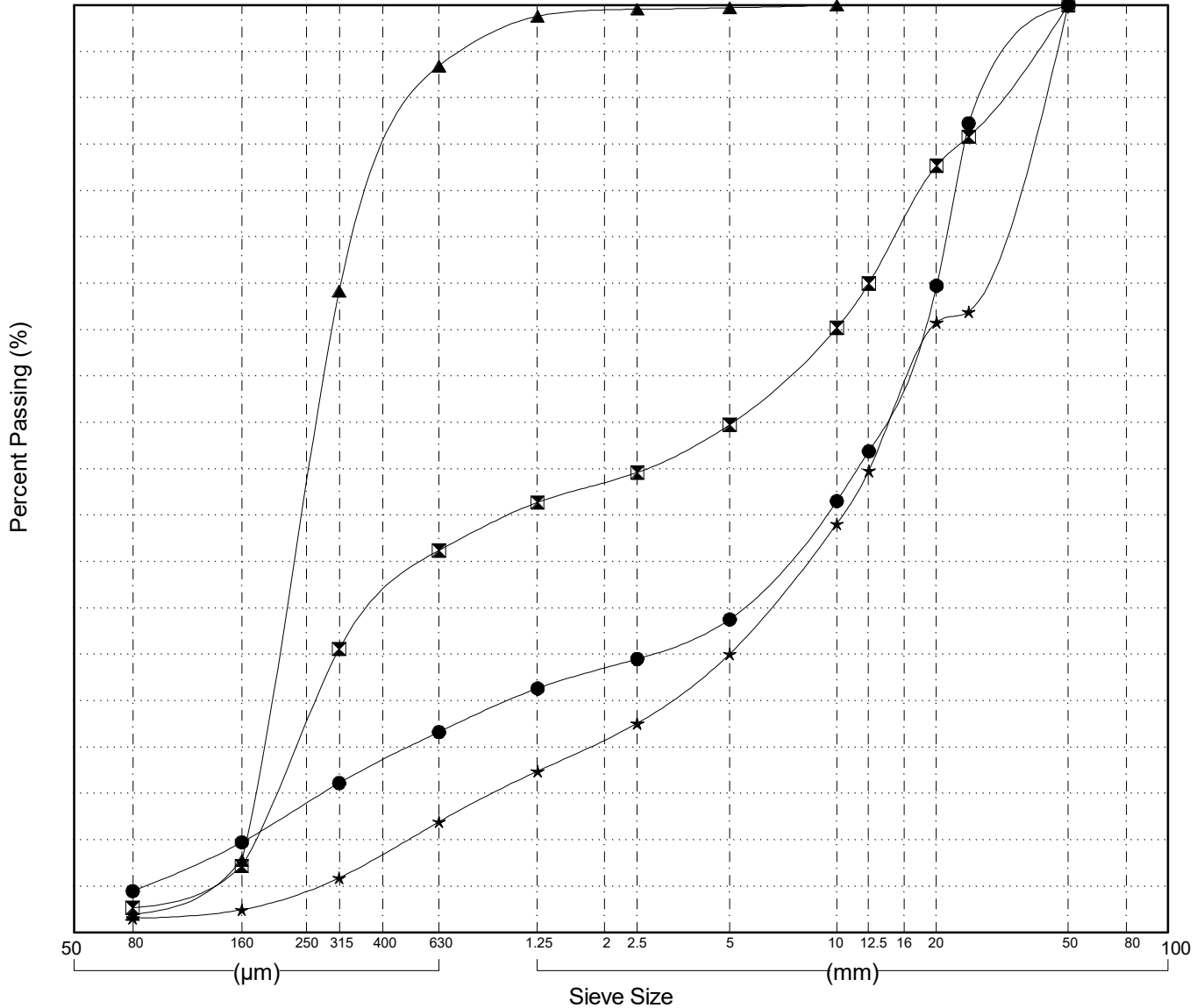
GRAIN SIZE ANALYSIS	Silver Trail km 49.0 Test Pits	SOURCE/TP#: TP5594
Wilfs Contracting		PROJECT NO: 552-202955-5206-1
CAT Excavator 325D	Coordinates: Z8N N7053550m E454863m	ELEVATION: 549.401306m

Master Revised July 2013

Field#	Lab#	Depth	Classification	%H2O	LL	PL	PI	Cc	Cu
● 22	2016-032	0.4 to 0.8	WELL-GRADED GRAVEL with SAND(GW)	3.2	NP	NP	NP	2.8	94.1
☒ 23	2016-033	1.2 to 1.6	POORLY GRADED SAND with GRAVEL(SP)	3.7	NP	NP	NP	0.1	39.7
▲ 24	2016-034	2.0 to 2.4	POORLY GRADED SAND(SP)	8.1	NP	NP	NP	0.9	1.7
★ 25	2016-035	3.4 to 3.8	WELL-GRADED GRAVEL with SAND(GW)	1.0	NP	NP	NP	2.6	33.5

Field#	Lab#	% PASSING	Sieve Size (mm)													% Breakdown			
			100.0	80.0	50.0	25.0	20.0	12.5	10.0	5.0	2.5	1.25	0.630	0.315	0.160	0.080	Gravel	Sand	Silt
● 22	2016-032	100.0	100.0	100.0	100.0	87.3	69.8	51.9	46.5	33.8	29.5	26.3	21.6	16.1	9.7	4.5	66.2	29.3	4.5
☒ 23	2016-033	100.0	100.0	100.0	85.8	82.7	70.0	65.2	54.8	49.6	46.4	41.2	30.6	7.2	2.7	45.2	52.1	2.7	
▲ 24	2016-034	100.0	100.0	100.0	100.0	100.0	100.0	100.0	99.7	99.6	98.8	93.4	69.2	7.8	2.0	0.3	97.7	2.0	
★ 25	2016-035	100.0	100.0	100.0	67.0	65.8	49.8	44.1	30.1	22.6	17.4	12.0	5.9	2.5	1.6	69.9	28.5	1.6	

Silt	Sand			Gravel	
	Fine	Medium	Coarse	Fine	Coarse



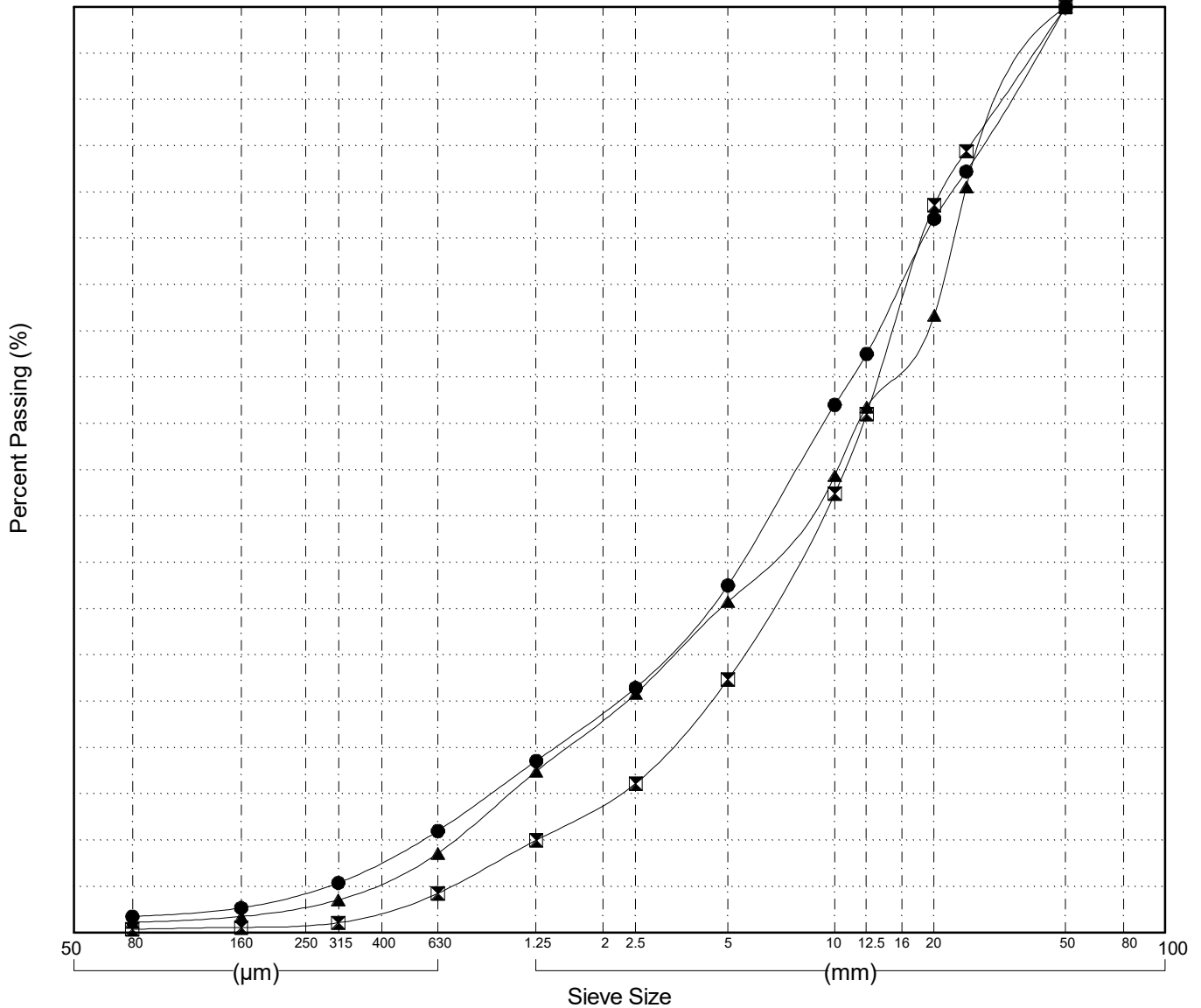
GRAIN SIZE ANALYSIS	Silver Trail km 49.0 Test Pits	SOURCE/TP#: TP5595
Wilfs Contracting		PROJECT NO: 552-202955-5206-1
CAT Excavator 325D	Coordinates: Z8N N7053554m E454937m	ELEVATION: 551.642822m

Master Revised July 2013

Field#	Lab#	Depth	Classification	%H2O	LL	PL	PI	Cc	Cu
● 26	2016-036	0.4 to 0.8	WELL-GRADED GRAVEL with SAND(GW)	1.3	NP	NP	NP	1.5	20.3
☒ 27	2016-037	1.4 to 1.8	WELL-GRADED GRAVEL with SAND(GW)	1.6	NP	NP	NP	1.6	10.9
▲ 28	2016-038	3.2 to 3.6	WELL-GRADED GRAVEL with SAND(GW)	1.7	NP	NP	NP	1.0	20.7

Field#	Lab#	% PASSING	Sieve Size (mm)													% Breakdown			
			100.0	80.0	50.0	25.0	20.0	12.5	10.0	5.0	2.5	1.25	0.630	0.315	0.160	0.080	Gravel	Sand	Silt
● 26	2016-036	100.0	100.0	100.0	82.2	77.1	62.5	57.0	37.5	26.5	18.6	11.0	5.4	2.7	1.8	62.5	35.8	1.8	
☒ 27	2016-037	100.0	100.0	100.0	84.4	78.6	56.0	47.4	27.4	16.1	10.0	4.3	1.1	0.6	0.4	72.6	27.0	0.4	
▲ 28	2016-038	100.0	100.0	100.0	80.6	66.7	56.8	49.4	35.8	25.8	17.4	8.6	3.6	1.8	1.1	64.2	34.6	1.1	

Silt	Sand			Gravel	
	Fine	Medium	Coarse	Fine	Coarse



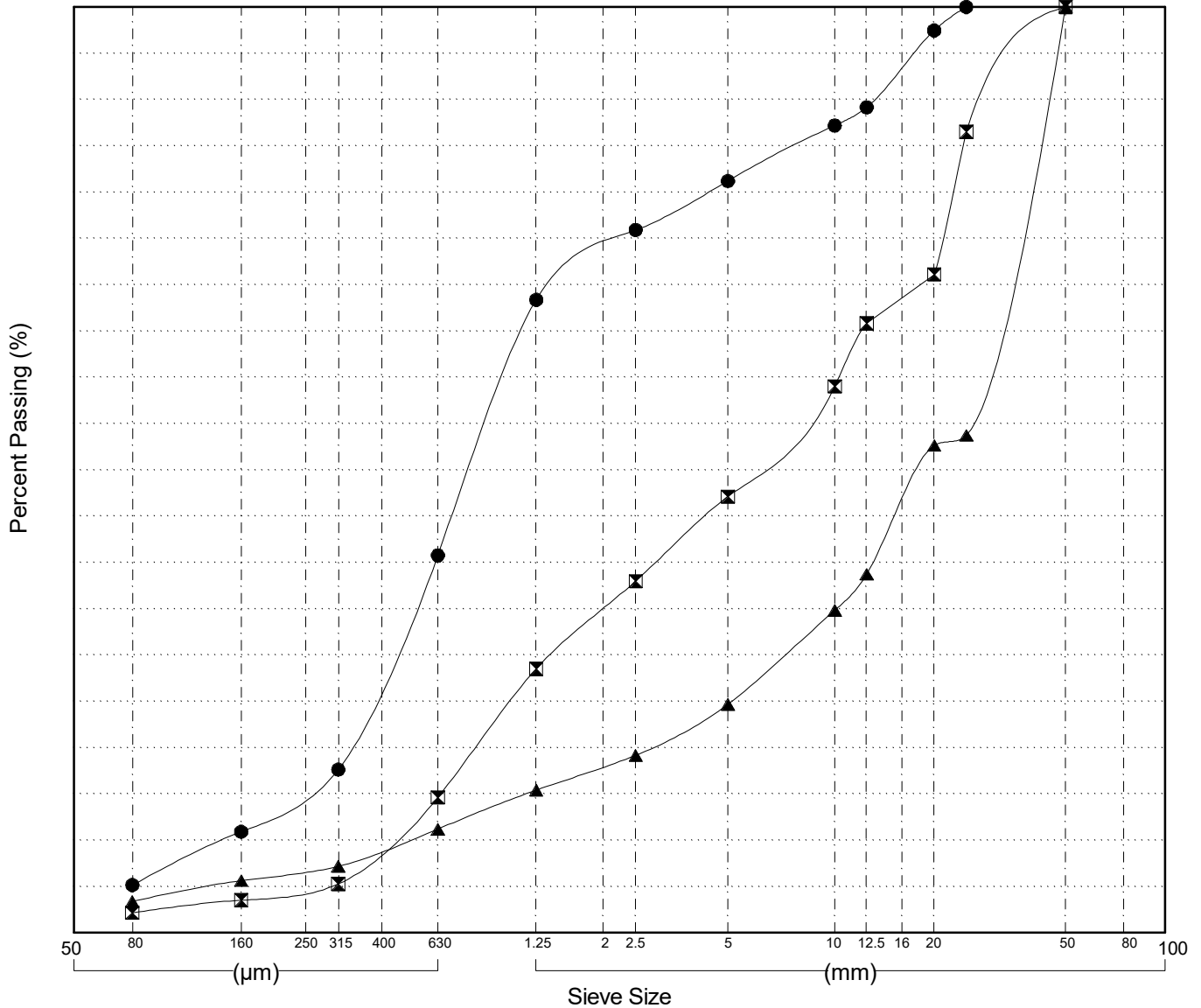
GRAIN SIZE ANALYSIS	Silver Trail km 49.0 Test Pits	SOURCE/TP#: TP5596
Wilfs Contracting		PROJECT NO: 552-202955-5206-1
CAT Excavator 325D	Coordinates: Z8N N7053548m E455161m	ELEVATION: 535.178833m

Master Revised July 2013

Field#	Lab#	Depth	Classification	%H2O	LL	PL	PI	Cc	Cu
● 29	2016-039	0.3 to 0.6	WELL-GRADED SAND with SILT and GRAVEL(SW-SM)	1.1	NP	NP	NP	1.4	7.2
☒ 30	2016-040	1.0 to 1.4	POORLY GRADED GRAVEL with SAND(GP)	0.7	NP	NP	NP	0.4	23.1
▲ 31	2016-041	3.2 to 3.6	POORLY GRADED GRAVEL with SAND(GP)	1.3	NP	NP	NP	3.5	53.6

Field#	Lab#	100.0	80.0	50.0	25.0	20.0	12.5	10.0	5.0	2.5	1.25	0.630	0.315	0.160	0.080	% Breakdown			
																Gravel	Sand	Silt	Clay
● 29	2016-039	100.0	100.0	100.0	100.0	97.5	89.2	87.2	81.2	75.9	68.4	40.8	17.6	10.9	5.2	18.8	76.0	5.2	
☒ 30	2016-040	100.0	100.0	100.0	86.5	71.1	65.8	59.0	47.1	38.0	28.5	14.6	5.3	3.5	2.2	52.9	44.9	2.2	
▲ 31	2016-041	100.0	100.0	100.0	53.7	52.6	38.7	34.8	24.7	19.2	15.4	11.2	7.2	5.6	3.4	75.3	21.3	3.4	

Silt	Sand			Gravel	
	Fine	Medium	Coarse	Fine	Coarse



Highways and Public Works
Transportation Engineering Branch

LOGGED BY: G.Kennedy
COMPILED BY: R.Kennedy-Kuiper
REVIEWED BY: R.Stilwell

Pit #
Complete: 5/26/2016 9:10:00 AM

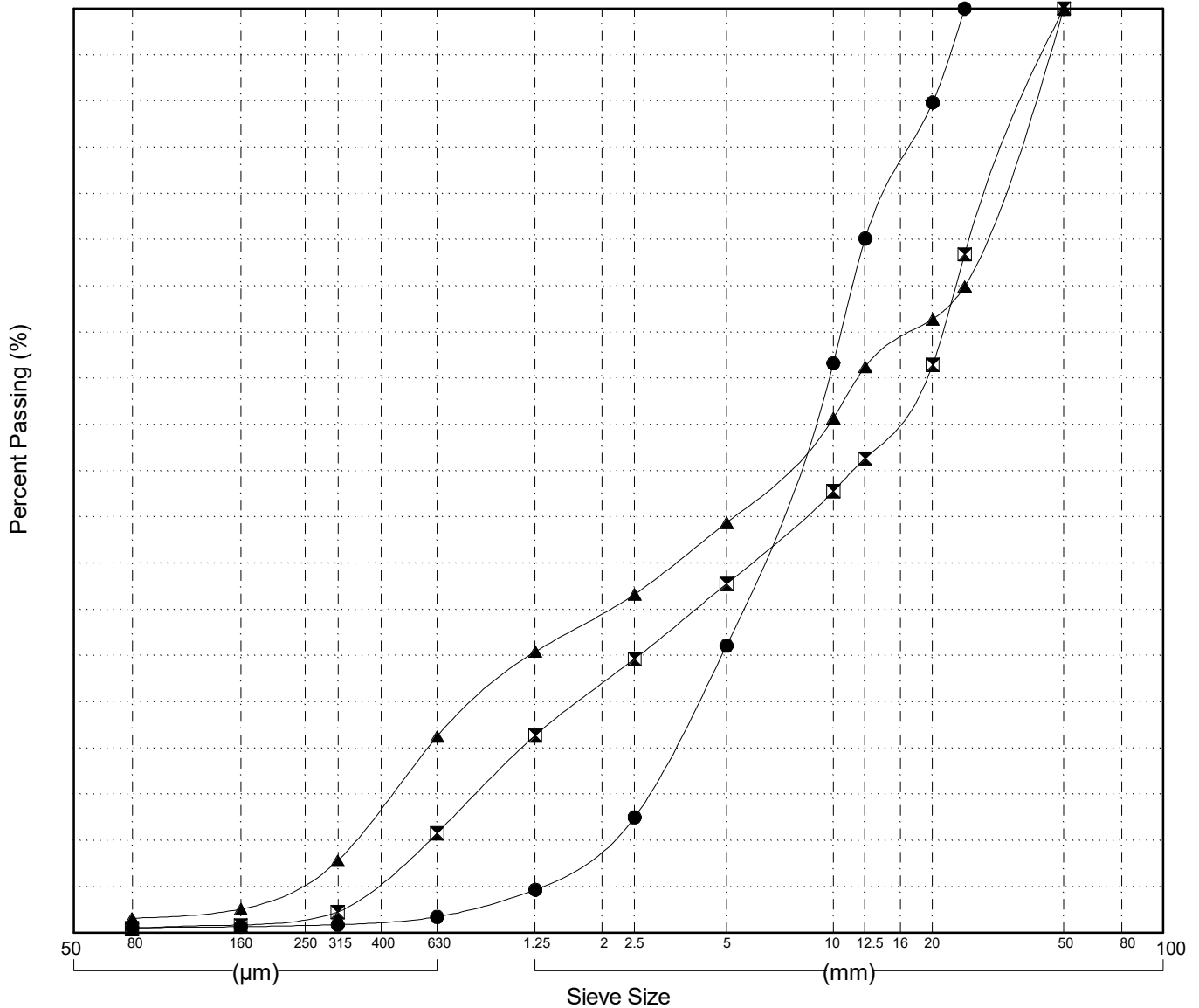
GRAIN SIZE ANALYSIS	Silver Trail km 49.0 Test Pits	SOURCE/TP#: TP5597
Wilfs Contracting		PROJECT NO: 552-202955-5206-1
CAT Excavator 325D	Coordinates: Z8N N7053549m E455089m	ELEVATION: 543.144531m

Master Revised July 2013

Field#	Lab#	Depth	Classification	%H2O	LL	PL	PI	Cc	Cu
● 32	2016-042	0.2 to 0.6	WELL-GRADED GRAVEL with SAND(GW)	1.7	NP	NP	NP	1.1	4.8
☒ 33	2016-043	1.6 to 2.0	POORLY GRADED GRAVEL with SAND(GP)	1.7	NP	NP	NP	0.6	31.6
▲ 34	2016-044	3.2 to 3.6	POORLY GRADED GRAVEL with SAND(GP)	2.4	NP	NP	NP	0.3	33.8

Field#	Lab#	% PASSING	Sieve Size													% Breakdown			
			100.0	80.0	50.0	25.0	20.0	12.5	10.0	5.0	2.5	1.25	0.630	0.315	0.160	0.080	Gravel	Sand	Silt
● 32	2016-042	100.0	100.0	100.0	100.0	89.8	75.1	61.6	31.1	12.5	4.7	1.7	0.9	0.7	0.6	68.9	30.5	0.6	
☒ 33	2016-043	100.0	100.0	100.0	73.4	61.5	51.3	47.8	37.8	29.7	21.4	10.8	2.3	0.8	0.5	62.2	37.2	0.5	
▲ 34	2016-044	100.0	100.0	100.0	69.9	66.4	61.2	55.7	44.4	36.6	30.4	21.3	7.8	2.6	1.6	55.6	42.8	1.6	

Silt	Sand			Gravel	
	Fine	Medium	Coarse	Fine	Coarse



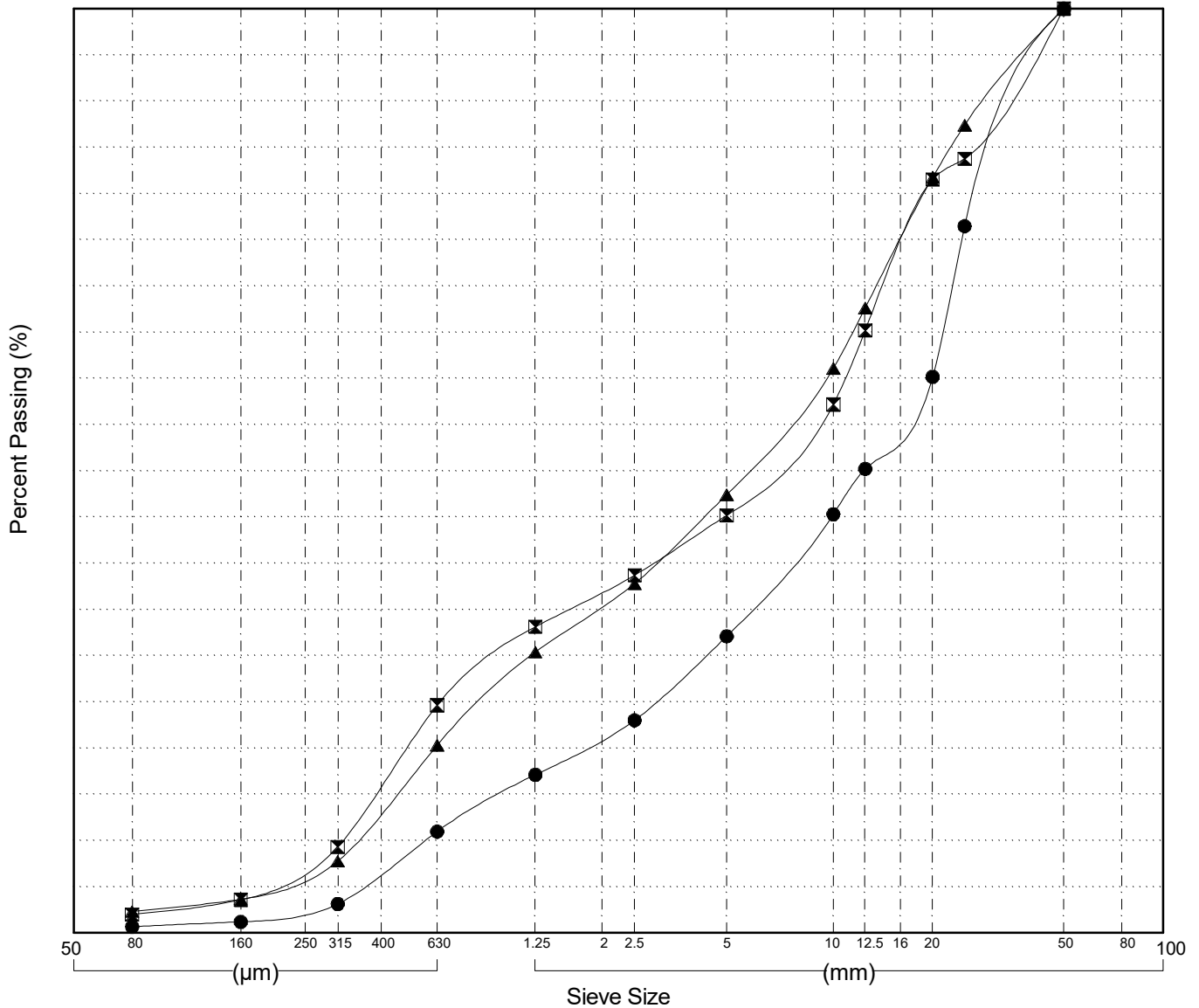
GRAIN SIZE ANALYSIS	Silver Trail km 49.0 Test Pits	SOURCE/TP#: TP5598
Wilfs Contracting		PROJECT NO: 552-202955-5206-1
CAT Excavator 325D	Coordinates: Z8N N7053550m E455013m	ELEVATION: 552.226929m

Master Revised July 2013

Field#	Lab#	Depth	Classification	%H2O	LL	PL	PI	Cc	Cu
● 35	2016-045	0.3 to 0.7	WELL-GRADED GRAVEL with SAND(GW)	1.8	NP	NP	NP	1.5	34.3
☒ 36	2016-046	0.7 to 1.1	POORLY GRADED GRAVEL with SAND(GP)	2.7	NP	NP	NP	0.3	33.3
▲ 37	2016-047	2.8 to 3.2	POORLY GRADED GRAVEL with SAND(GP)	2.8	NP	NP	NP	0.4	26.4

Field#	Lab#	% PASSING	Sieve Size (mm)														% Breakdown			
			100.0	80.0	50.0	25.0	20.0	12.5	10.0	5.0	2.5	1.25	0.630	0.315	0.160	0.080	Gravel	Sand	Silt	Clay
● 35	2016-045	100.0	100.0	100.0	76.5	60.2	50.2	45.3	32.1	23.0	17.1	11.0	3.1	1.2	0.7	67.9	31.4	0.7		
☒ 36	2016-046	100.0	100.0	100.0	83.8	81.5	65.2	57.2	45.2	38.7	33.1	24.6	9.3	3.6	2.0	54.8	43.2	2.0		
▲ 37	2016-047	100.0	100.0	100.0	87.4	81.8	67.6	61.1	47.4	37.8	30.4	20.3	7.8	3.6	2.3	52.6	45.1	2.3		

Silt	Sand			Gravel	
	Fine	Medium	Coarse	Fine	Coarse



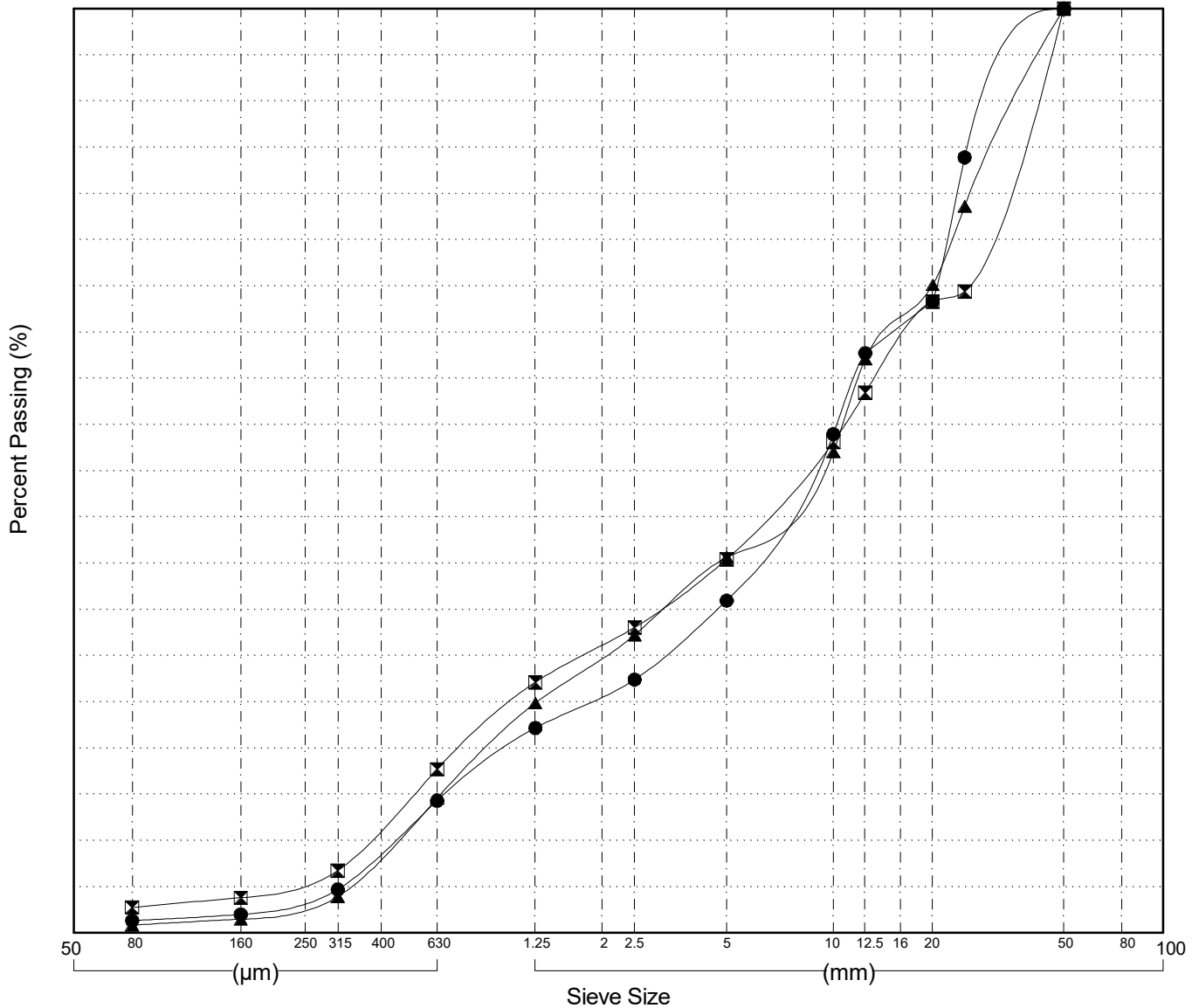
GRAIN SIZE ANALYSIS	Silver Trail km 49.0 Test Pits	SOURCE/TP#: TP5599
Wilfs Contracting		PROJECT NO: 552-202955-5206-1
CAT Excavator 325D	Coordinates: Z8N N7053476m E455012m	ELEVATION: 546.595886m

Master Revised July 2013

Field#	Lab#	Depth	Classification	%H2O	LL	PL	PI	Cc	Cu
● 38	2016-048	0.6 to 1.0	WELL-GRADED GRAVEL with SAND(GW)	2.1	NP	NP	NP	1.7	25.3
☒ 39	2016-049	1.2 to 1.6	POORLY GRADED GRAVEL with SAND(GP)	2.5	NP	NP	NP	0.6	34.8
▲ 40	2016-050	3.2 to 3.6	POORLY GRADED GRAVEL with SAND(GP)	2.1	NP	NP	NP	0.7	25.5

Field#	Lab#	% PASSING	Sieve Size (mm)													% Breakdown			
			100.0	80.0	50.0	25.0	20.0	12.5	10.0	5.0	2.5	1.25	0.630	0.315	0.160	0.080	Gravel	Sand	Silt
● 38	2016-048	100.0	100.0	100.0	83.9	68.3	62.7	54.0	36.0	27.4	22.2	14.3	4.7	2.0	1.3	64.0	34.6	1.3	
☒ 39	2016-049	100.0	100.0	100.0	69.4	68.3	58.4	53.1	40.4	33.1	27.1	17.7	6.7	3.8	2.8	59.6	37.7	2.8	
▲ 40	2016-050	100.0	100.0	100.0	78.6	70.1	62.1	52.0	40.6	32.2	24.9	14.6	3.9	1.5	0.9	59.4	39.8	0.9	

Silt	Sand			Gravel	
	Fine	Medium	Coarse	Fine	Coarse



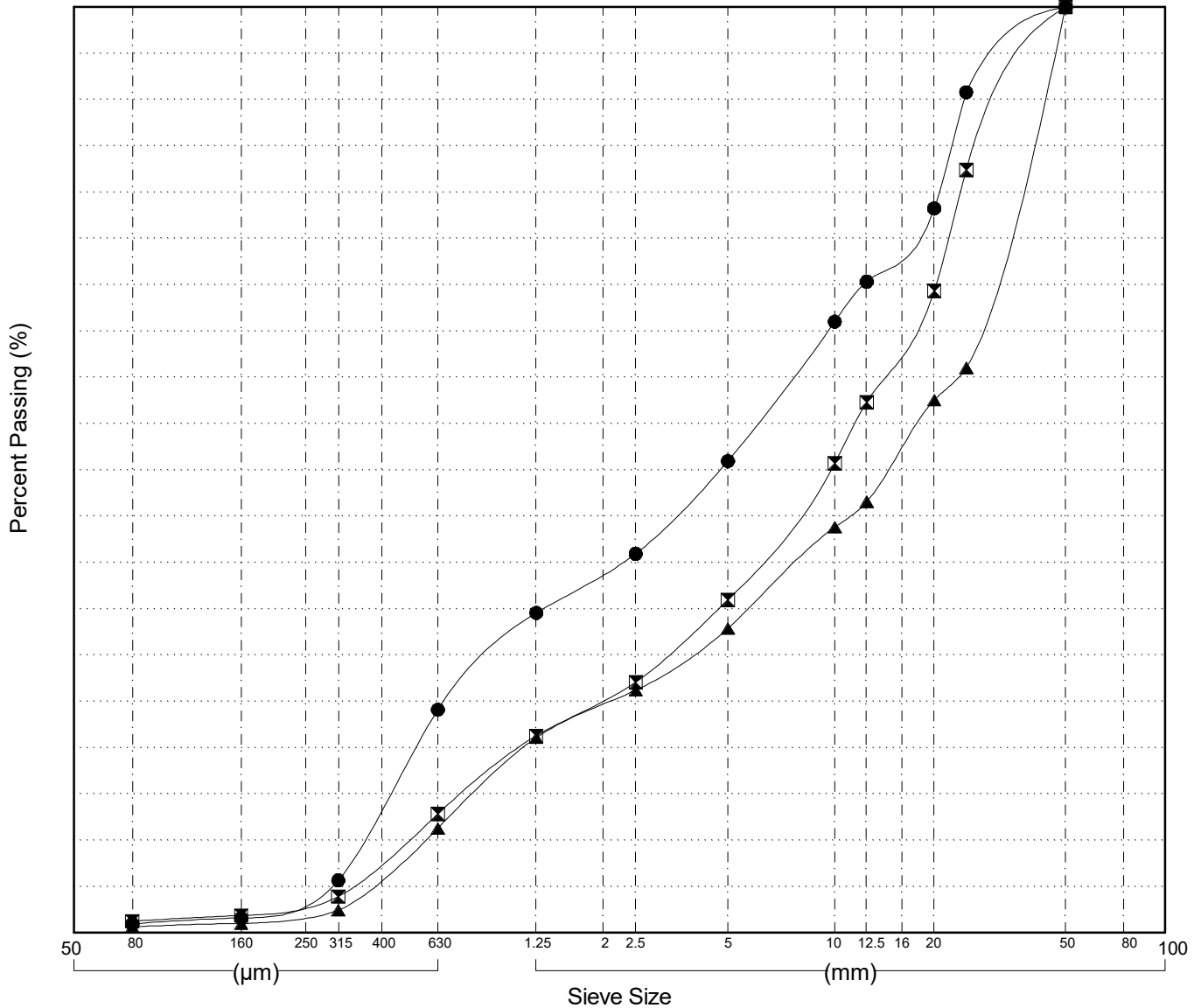
GRAIN SIZE ANALYSIS	Silver Trail km 49.0 Test Pits	SOURCE/TP#: TP5600
Wilfs Contracting		PROJECT NO: 552-202955-5206-1
CAT Excavator 325D	Coordinates: Z8N N7053476m E454936m	ELEVATION: 552.798706m

Master Revised July 2013

Field#	Lab#	Depth	Classification	%H2O	LL	PL	PI	Cc	Cu
● 41	2016-051	0.3 to 0.7	POORLY GRADED SAND with GRAVEL(SP)	2.5	NP	NP	NP	0.3	20.1
☒ 42	2016-052	1.2 to 1.6	WELL-GRADED GRAVEL with SAND(GW)	3.7	NP	NP	NP	1.4	27.5
▲ 43	2016-053	3.2 to 3.6	POORLY GRADED GRAVEL with SAND(GP)	1.7	NP	NP	NP	1.0	41.1

Field#	Lab#	100.0	80.0	50.0	25.0	20.0	12.5	10.0	5.0	2.5	1.25	0.630	0.315	0.160	0.080	%Breakdown			
		% PASSING														Gravel	Sand	Silt	Clay
● 41	2016-051	100.0	100.0	100.0	90.8	78.2	70.3	66.0	50.9	40.9	34.6	24.1	5.7	1.6	1.0	49.1	50.0	1.0	
☒ 42	2016-052	100.0	100.0	100.0	82.4	69.3	57.3	50.7	36.0	27.1	21.3	12.8	3.9	1.9	1.3	64.0	34.7	1.3	
▲ 43	2016-053	100.0	100.0	100.0	61.0	57.6	46.6	43.8	32.9	26.2	21.1	11.3	2.4	1.0	0.6	67.1	32.2	0.6	

Silt	Sand			Gravel	
	Fine	Medium	Coarse	Fine	Coarse



GRAIN SIZE ANALYSIS	Silver Trail km 49.0 Test Pits	SOURCE/TP#: TP5601
Wilfs Contracting		PROJECT NO: 552-202955-5206-1
CAT Excavator 325D	Coordinates: Z8N N7053475m E455086m	ELEVATION: 548.364929m

Master Revised July 2013

Field#	Lab#	Depth	Classification	%H2O	LL	PL	PI	Cc	Cu
● 44	2016-054	0.4 to 0.8	WELL-GRADED GRAVEL with SAND(GW)	1.8	NP	NP	NP	1.5	23.2
☒ 45	2016-055	1.2 to 1.6	WELL-GRADED GRAVEL with SAND(GW)	2.0	NP	NP	NP	2.3	27.1
▲ 46	2016-056	2.0 to 2.4	POORLY GRADED SAND(SP)	4140.0	NP	NP	NP	0.8	2.3
★ 47	2016-057	3.4 to 3.8	POORLY GRADED SAND(SP)	4.2	NP	NP	NP	0.8	2.5

Field#	Lab#	% PASSING															% Breakdown			
		100.0	80.0	50.0	25.0	20.0	12.5	10.0	5.0	2.5	1.25	0.630	0.315	0.160	0.080	Gravel	Sand	Silt	Clay	
● 44	2016-054	100.0	100.0	100.0	90.5	78.1	62.3	53.1	37.0	27.1	21.0	12.1	5.1	3.1	1.8	63.0	35.2	1.8		
☒ 45	2016-055	100.0	100.0	100.0	85.3	63.2	49.7	43.5	27.8	21.0	16.2	9.5	3.0	1.3	0.8	72.2	27.1	0.8		
▲ 46	2016-056	100.0	100.0	100.0	100.0	100.0	100.0	99.4	95.0	91.9	86.5	48.8	6.2	1.8	0.9	5.0	94.0	0.9		
★ 47	2016-057	100.0	100.0	100.0	100.0	100.0	100.0	100.0	94.9	89.2	78.6	43.3	5.3	1.4	0.8	5.1	94.1	0.8		

Silt	Sand			Gravel	
	Fine	Medium	Coarse	Fine	Coarse

