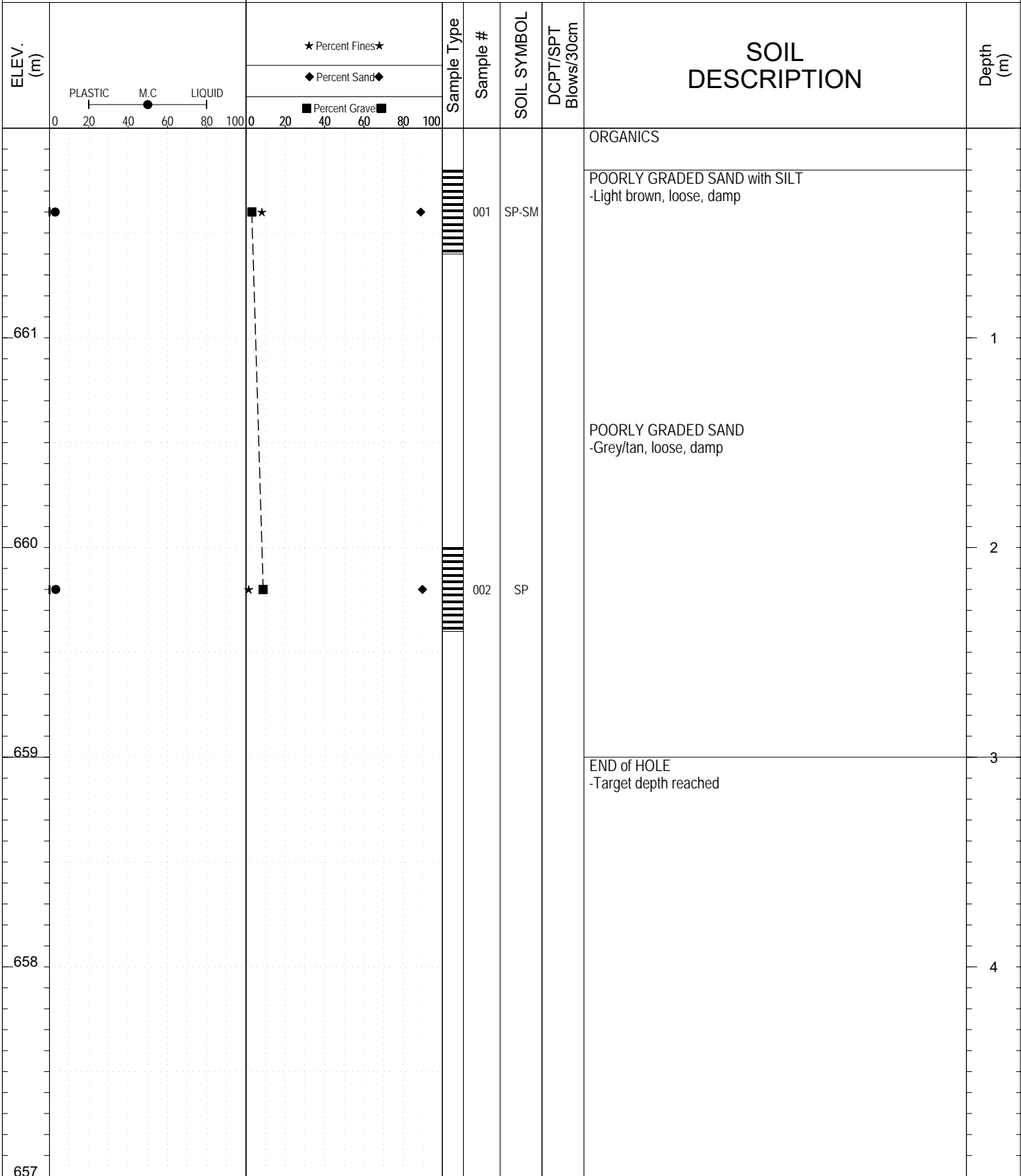


SUBSURFACE EXPLORATION AND TEST REPORT		Alaska Highway #1	SOURCE/TP#: 890-5657
J.Magun Contracting		Gravel Exploration, km 1004.2 RHS	PROJECT NO: 552 202955 5502-1
Excavator - undefined		Coordinates: Z9N N6654849m E493999m	ELEVATION: 662m

SAMPLE TYPE     UNDISTURBED     DCPT     AUGER     BULK     SPT     CORE

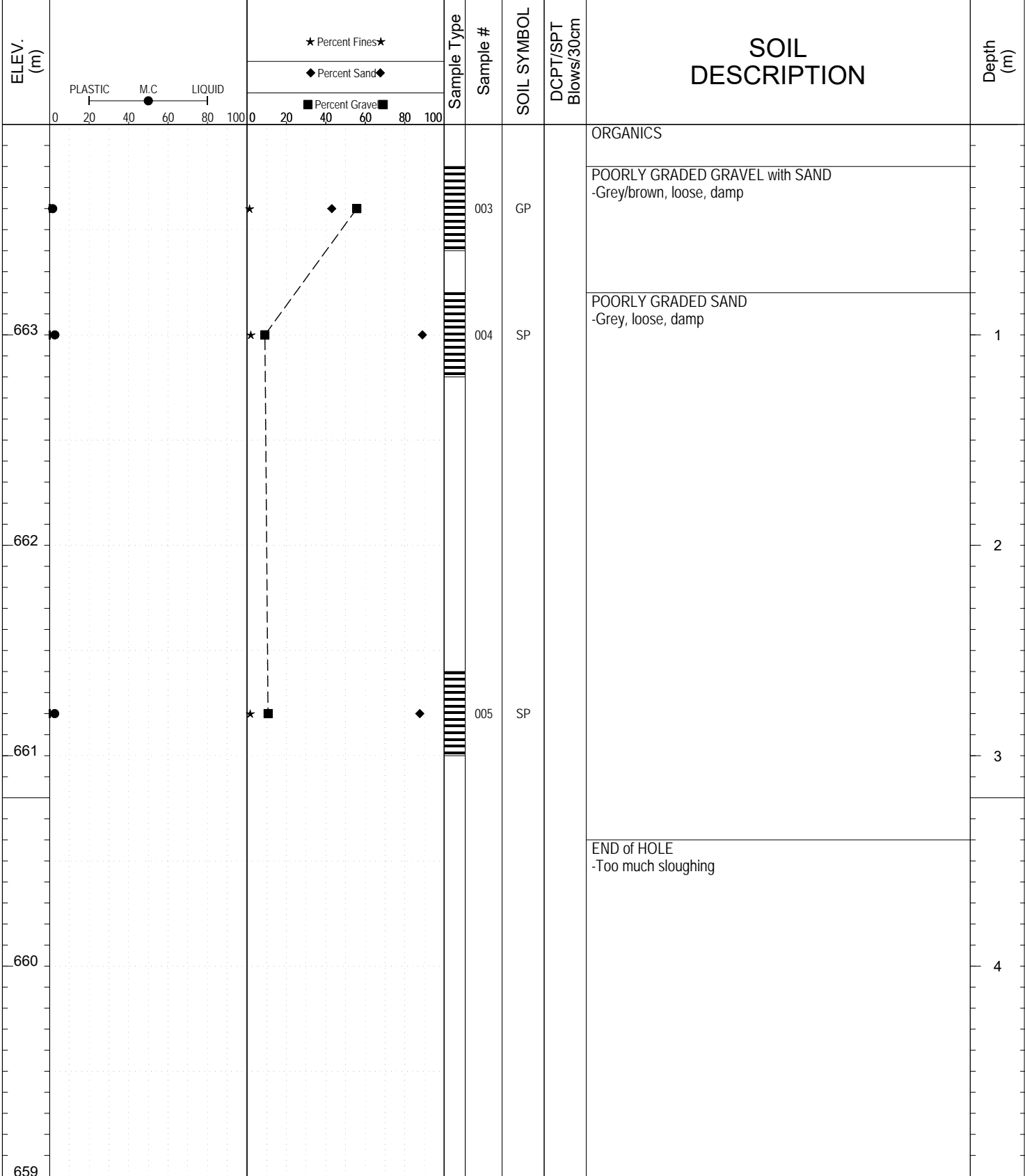


Highways and Public Works  
 Transportation Engineering Branch

LOGGED BY: G.Kennedy	Termination Depth: 3m
COMPILED BY: R.Kennedy-Kuiper	Complete: 7/13/2016 9:05:00 AM
REVIEWED BY: R.Stilwell	Pit #: 105-A-08 Page 1 of 1

SUBSURFACE EXPLORATION AND TEST REPORT		Alaska Highway #1	SOURCE/TP#: 890-5658
J.Magun Contracting		Gravel Exploration, km 1004.2 RHS	PROJECT NO: 552 202955 5502-1
Excavator - undefined		Coordinates: Z9N N6654884m E493930m	ELEVATION: 664m

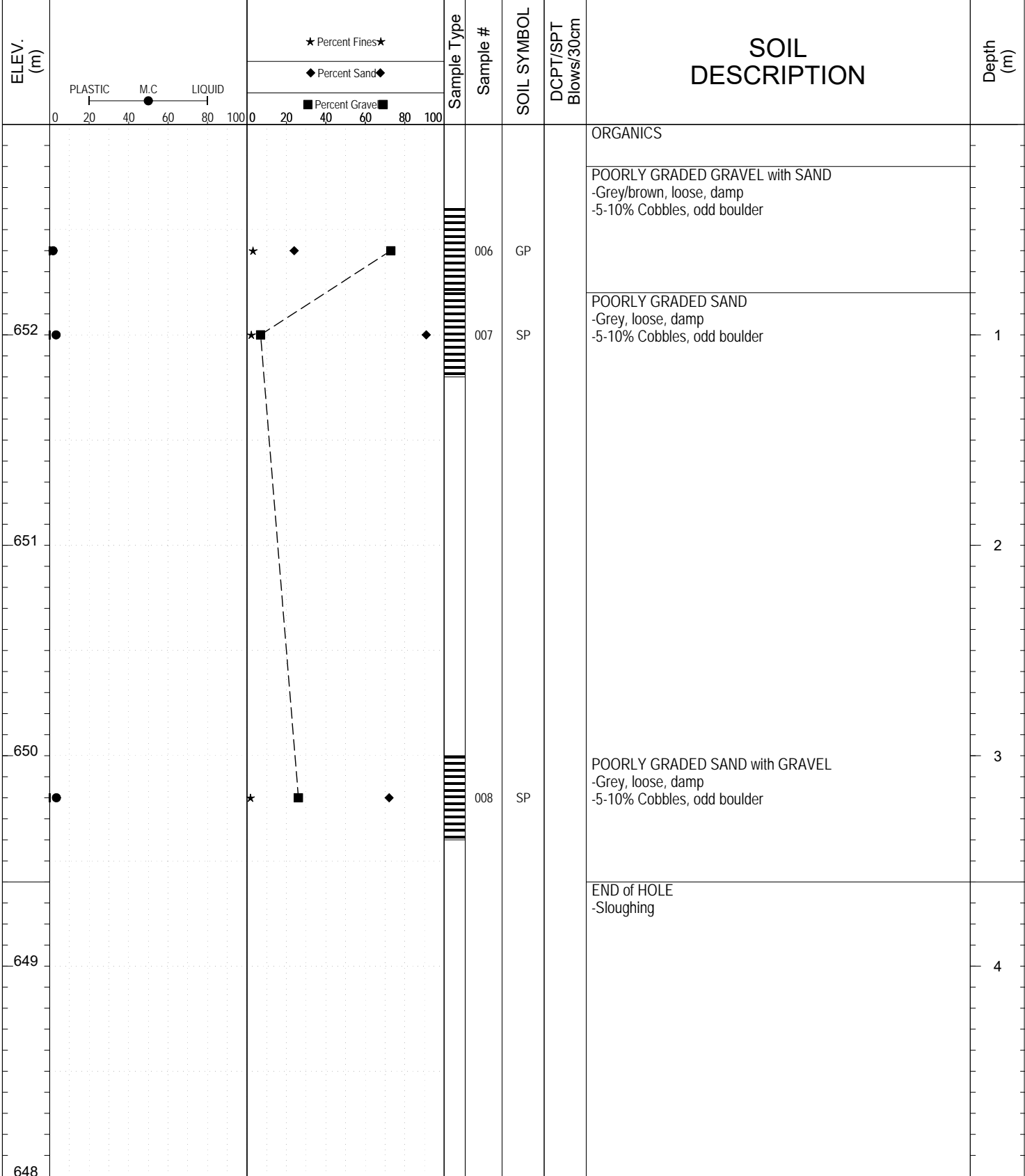
SAMPLE TYPE	<input type="checkbox"/> UNDISTURBED	<input type="checkbox"/> DCPT	<input checked="" type="checkbox"/> AUGER	<input type="checkbox"/> BULK	<input checked="" type="checkbox"/> SPT	<input type="checkbox"/> CORE
-------------	--------------------------------------	-------------------------------	---	-------------------------------	---	-------------------------------



Highways and Public Works  
Transportation Engineering Branch

LOGGED BY: G.Kennedy	Termination Depth: 3.2m
COMPILED BY: R.Kennedy-Kuiper	Complete: 7/13/2016 9:30:00 AM
REVIEWED BY: R.Stilwell	Pit #: 105-A-08 Page 1 of 1

SAMPLE TYPE     UNDISTURBED     DCPT     AUGER     BULK     SPT     CORE

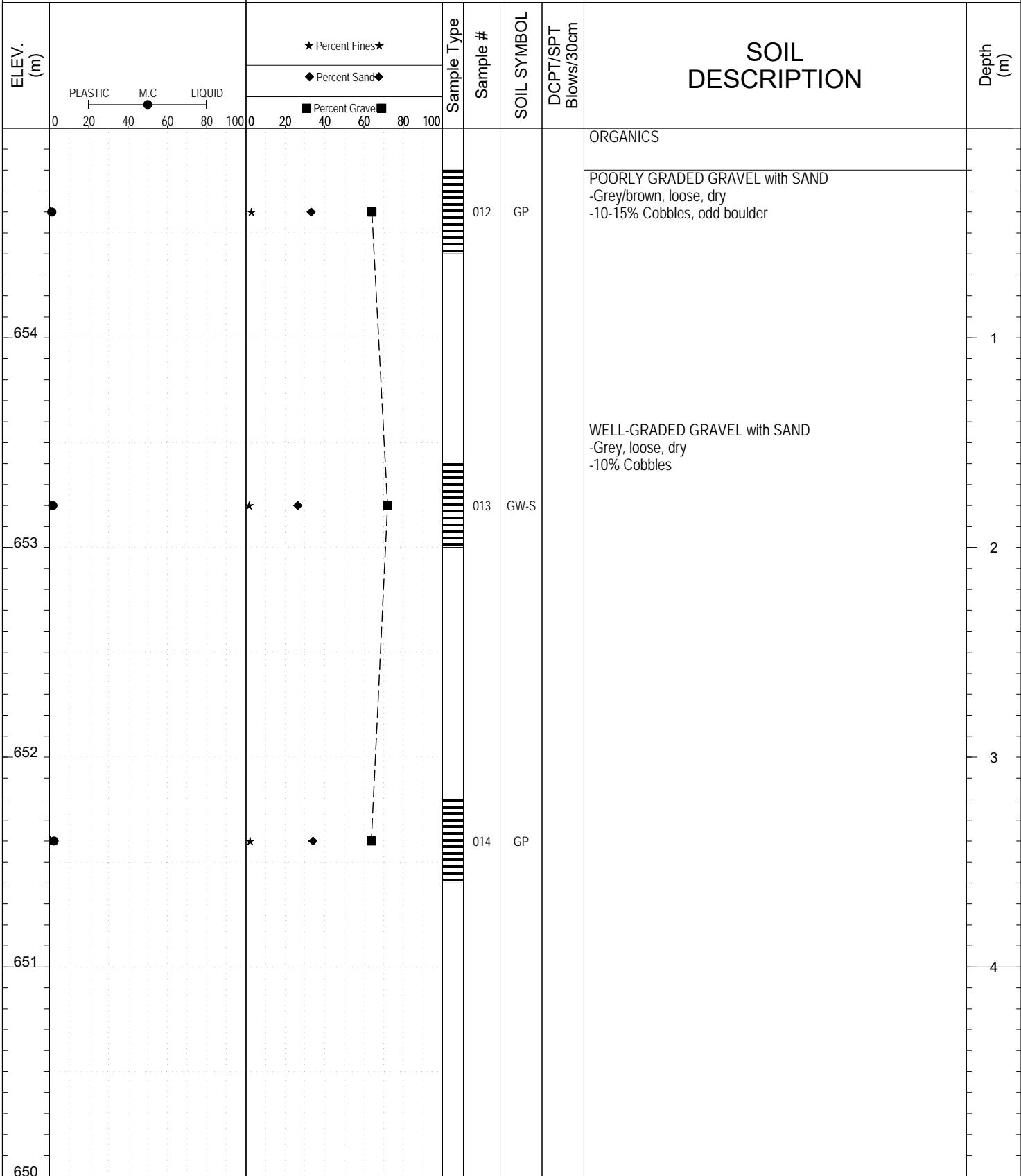


SUBSURFACE EXPLORATION AND TEST REPORT		Alaska Highway #1		SOURCE/TP#: 890-5660				
J.Magun Contracting		Gravel Exploration, km 1004.2 RHS		PROJECT NO: 552 202955 5502-1				
Excavator - undefined		Coordinates: Z9N N6654998m E494004m		ELEVATION: 659m				
SAMPLE TYPE		<input type="checkbox"/> UNDISTURBED <input type="checkbox"/> DCPT <input checked="" type="checkbox"/> AUGER <input type="checkbox"/> BULK <input checked="" type="checkbox"/> SPT <input type="checkbox"/> CORE						
ELEV. (m)	★ Percent Fines ★ ◆ Percent Sand ◆ ■ Percent Gravel ■		Sample Type	Sample #	SOIL SYMBOL	DCPT/SPT Blows/30cm	SOIL DESCRIPTION	Depth (m)
	PLASTIC      M.C      LIQUID 0      20      40      60      80      100							
658	★	◆	■	009	SP		ORGANICS POORLY GRADED SAND with GRAVEL -Brown, loose, damp  -Grey -5-10% Cobbles	1
657	★	◆	■	010	SP			2
656	★	◆	■	011	GP-GM		POORLY GRADED GRAVEL with SILT and SAND -Grey, loose, damp -5-10% Cobbles, odd boulder	3
655							END of HOLE -Target depth reached	4
654								



SUBSURFACE EXPLORATION AND TEST REPORT		Alaska Highway #1	SOURCE/TP#: 890-5666
J.Magun Contracting		Gravel Exploration, km 1004.2 RHS	PROJECT NO: 552 202955 5502-1
Excavator - undefined		Coordinates: Z9N N6655119m E494335m	ELEVATION: 655m

SAMPLE TYPE     UNDISTURBED     DCPT     AUGER     BULK     SPT     CORE



Highways and Public Works  
Transportation Engineering Branch

LOGGED BY: G.Kennedy	Termination Depth: 4m
COMPILED BY: R.Kennedy-Kuiper	Complete: 7/13/2016 1:05:00 PM
REVIEWED BY: R.Stilwell	Pit #: 105-A-08    Page 1 of 1

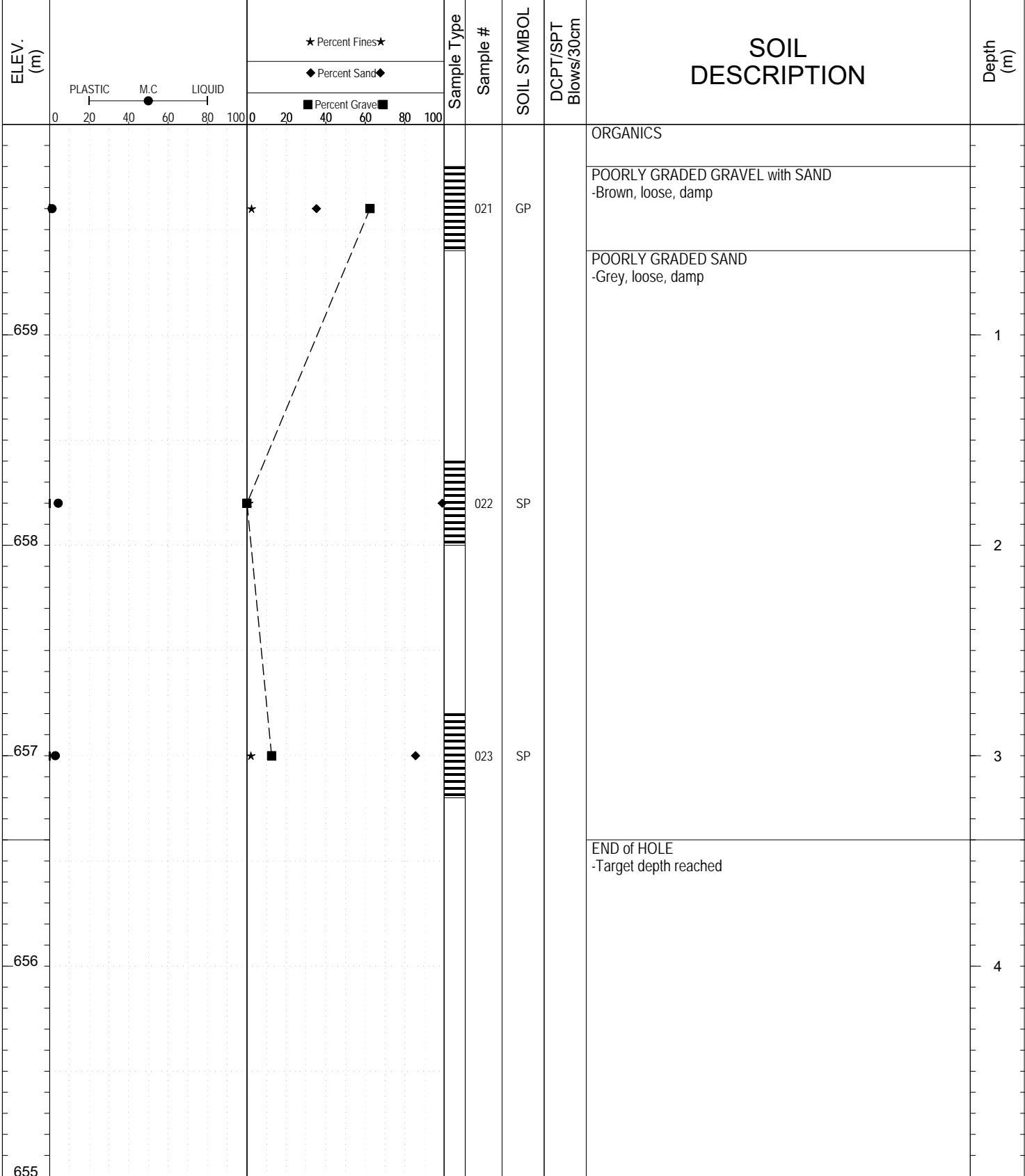
SUBSURFACE EXPLORATION AND TEST REPORT		Alaska Highway #1		SOURCE/TP#: 890-5667		
J.Magun Contracting		Gravel Exploration, km 1004.2 RHS		PROJECT NO: 552 202955 5502-1		
Excavator - undefined		Coordinates: Z9N N6655096m E494431m		ELEVATION: 654m		
SAMPLE TYPE		<input type="checkbox"/> UNDISTURBED <input type="checkbox"/> DCPT <input checked="" type="checkbox"/> AUGER <input type="checkbox"/> BULK <input checked="" type="checkbox"/> SPT <input type="checkbox"/> CORE				
ELEV. (m)	<div style="display: flex; justify-content: space-between;"> <div style="width: 45%;"> <p>★ Percent Fines★</p> <p>◆ Percent Sand◆</p> <p>■ Percent Gravel■</p> </div> <div style="width: 45%;"> <p>Sample Type</p> <p>Sample #</p> <p>SOIL SYMBOL</p> <p>DCPT/SPT Blows/30cm</p> </div> </div>		SOIL DESCRIPTION		Depth (m)	
	<div style="display: flex; justify-content: space-between;"> <div style="width: 45%;"> <p>PLASTIC    M.C    LIQUID</p> <p>0    20    40    60    80    100</p> </div> <div style="width: 45%;"> <p>0    20    40    60    80    100</p> </div> </div>					
653	★    ◆    ■		015 GP		ORGANICS  POORLY GRADED GRAVEL with SAND -Light brown, loose, damp -5% Cobbles	1
652	★    ◆    ■		016 GP-GM		POORLY GRADED GRAVEL with SILT and SAND -Grey, loose, damp	2
651	★    ◆    ■		017 GP-GM			3
650					END of HOLE -Target depth reached	4
649						



SUBSURFACE EXPLORATION AND TEST REPORT		Alaska Highway #1		SOURCE/TP#: 890-5668				
J.Magun Contracting		Gravel Exploration, km 1004.2 RHS		PROJECT NO: 552 202955 5502-1				
Excavator - undefined		Coordinates: Z9N N6655058m E494372m		ELEVATION: 650m				
SAMPLE TYPE		<input type="checkbox"/> UNDISTURBED <input type="checkbox"/> DCPT <input checked="" type="checkbox"/> AUGER <input type="checkbox"/> BULK <input checked="" type="checkbox"/> SPT <input type="checkbox"/> CORE						
ELEV. (m)	★ Percent Fines★ ◆ Percent Sand◆ ■ Percent Gravel■		Sample Type	Sample #	SOIL SYMBOL	DCPT/SPT Blows/30cm	SOIL DESCRIPTION	Depth (m)
	PLASTIC      M.C      LIQUID 0      20      40      60      80      100							
649				018			ORGANICS POORLY GRADED GRAVEL with SAND -Brown, loose, damp -10-15% Cobbles	1
648				019	GP		-5% Cobbles	2
647				020	GP			3
646							END of HOLE -Target depth reached	4
645								

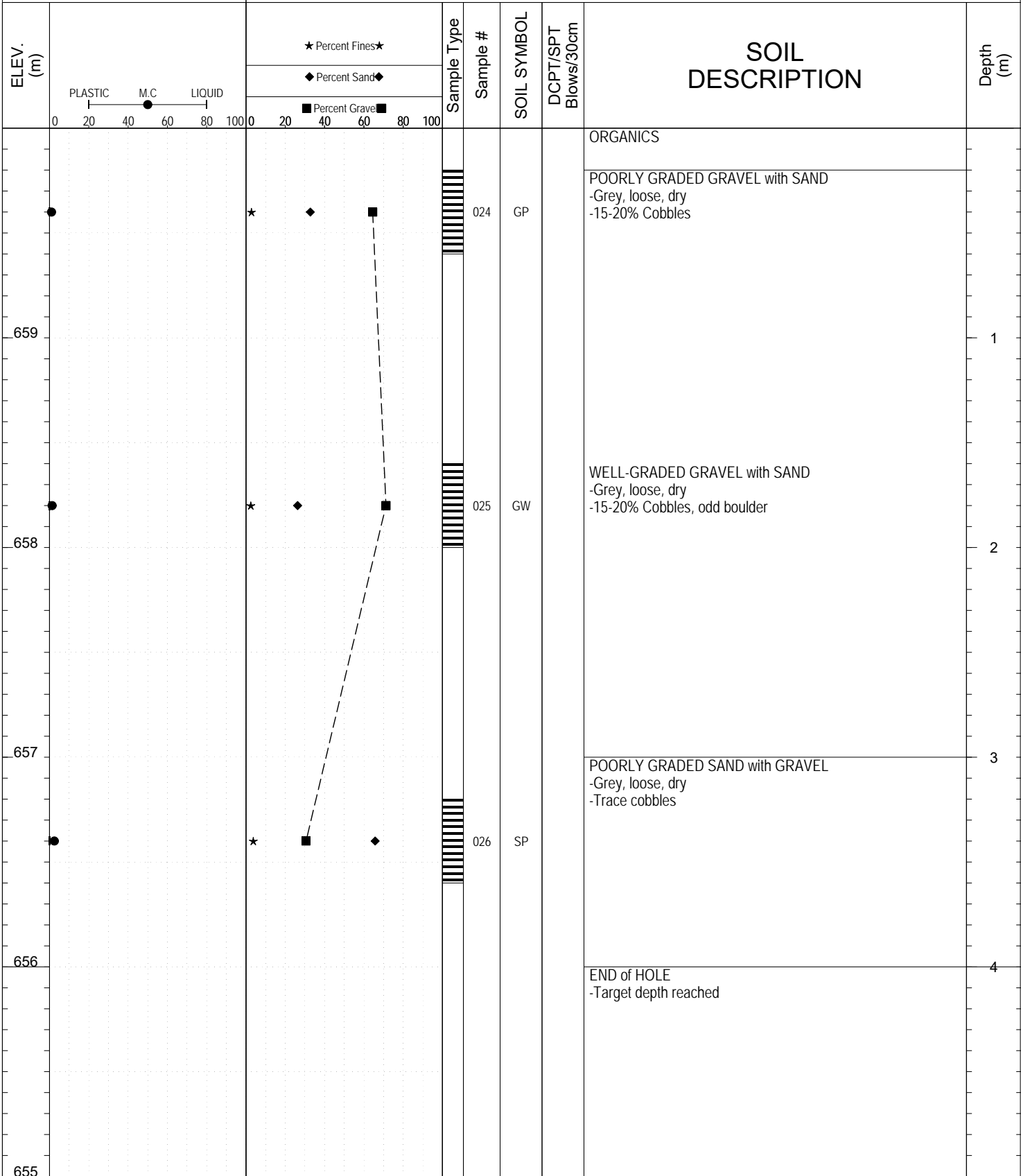


SAMPLE TYPE     UNDISTURBED     DCPT     AUGER     BULK     SPT     CORE



SUBSURFACE EXPLORATION AND TEST REPORT		Alaska Highway #1	SOURCE/TP#: 890-5670
J.Magun Contracting		Gravel Exploration, km 1004.2 RHS	PROJECT NO: 552 202955 5502-1
Excavator - undefined		Coordinates: Z9N N6655001m E494413m	ELEVATION: 660m

SAMPLE TYPE     UNDISTURBED     DCPT     AUGER     BULK     SPT     CORE

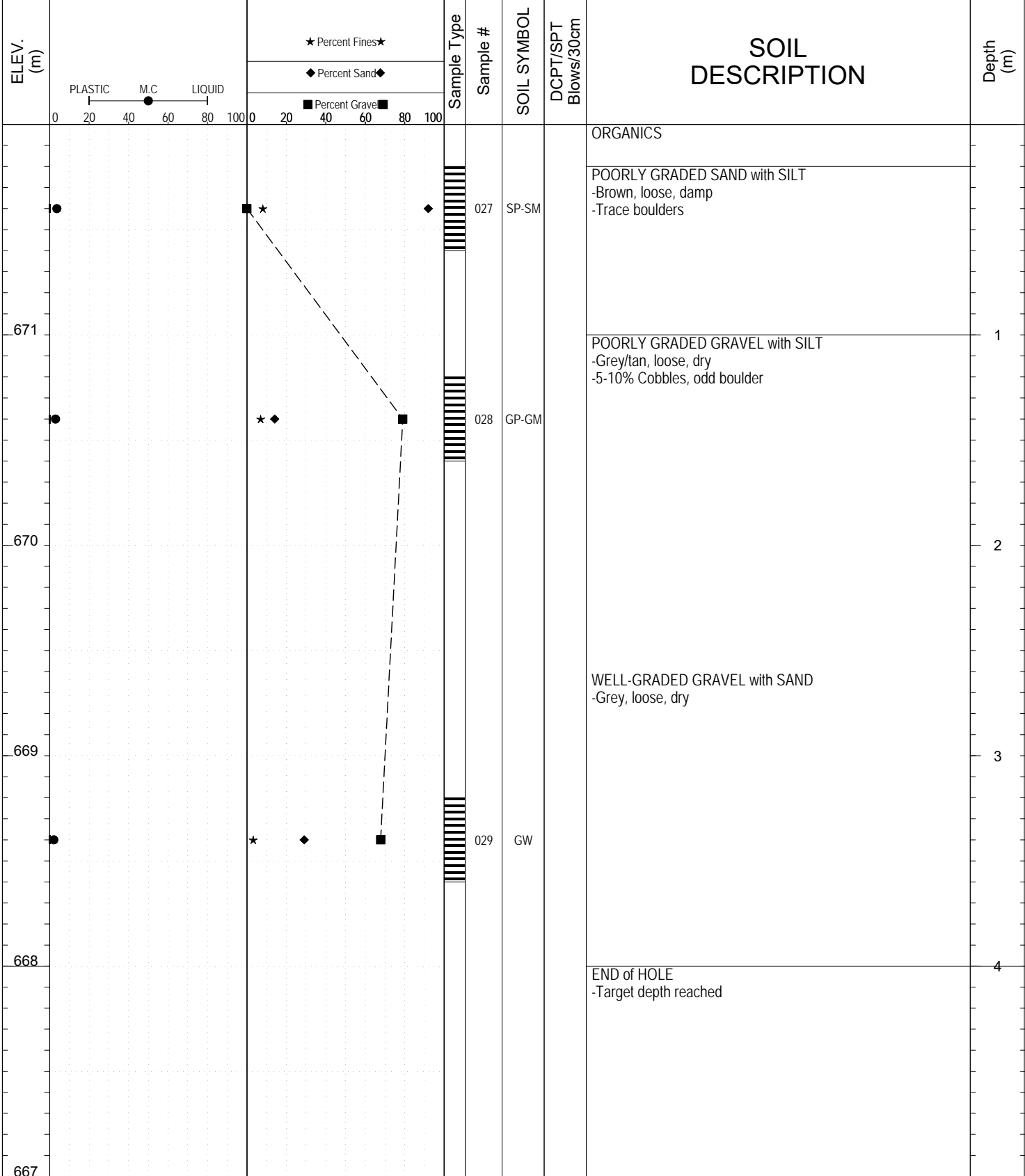


Highways and Public Works  
Transportation Engineering Branch

LOGGED BY: G.Kennedy	Termination Depth: 4m
COMPILED BY: R.Kennedy-Kuiper	Complete: 7/13/2016 3:40:00 PM
REVIEWED BY: R.Stilwell	Pit #: 105-A-08    Page 1 of 1

SUBSURFACE EXPLORATION AND TEST REPORT		Alaska Highway #1	SOURCE/TP#: 890-5671
J.Magun Contracting		Gravel Exploration, km 1004.2 RHS	PROJECT NO: 552 202955 5502-1
Excavator - undefined		Coordinates: Z9N N6655023m E494314m	ELEVATION: 672m

SAMPLE TYPE     UNDISTURBED     DCPT     AUGER     BULK     SPT     CORE



Highways and Public Works  
Transportation Engineering Branch

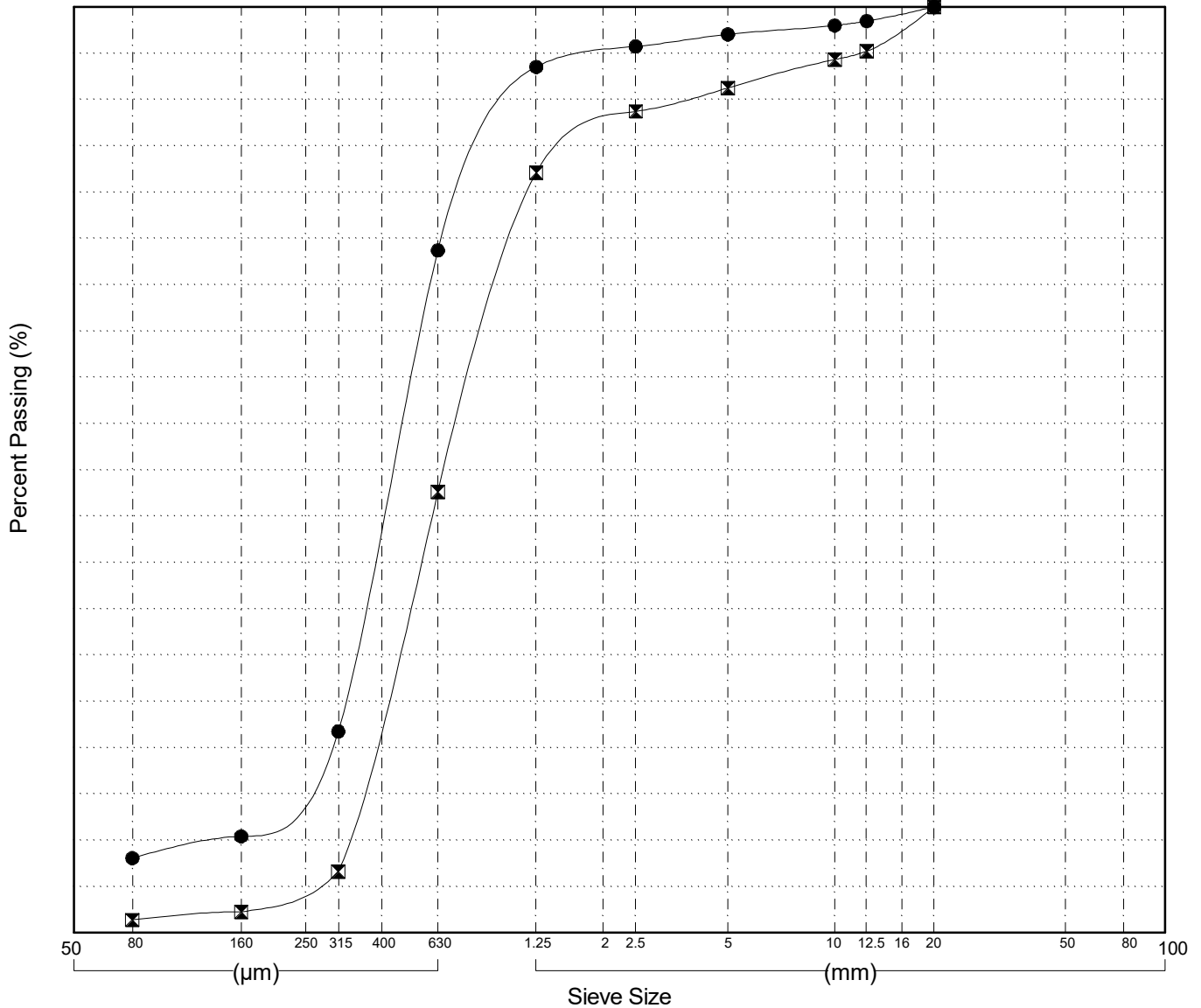
LOGGED BY: G.Kennedy	Termination Depth: 4m
COMPILED BY: R.Kennedy-Kuiper	Complete: 7/13/2016 4:20:00 PM
REVIEWED BY: R.Stilwell	Pit #: 105-A-08    Page 1 of 1

GRAIN SIZE ANALYSIS	Gravel Exploration	SOURCE/TP#: 890-5657
J.Magun Contracting	km 1004.2 RHS	PROJECT NO: 552 202955 5502-1
Excavator - undefined	Coordinates:Z9N N6654849m E493999m	ELEVATION: 662m

Master Revised July 2013

Field#	Lab#	Depth	Classification	%H2O	LL	PL	PI	Cc	Cu											
● 001	62	0.2 to 0.6	POORLY GRADED SAND with SILT(SP-SM)	2.9	NP	NP	NP	1.7	3.8											
☒ 002	63	2.0 to 2.4	POORLY GRADED SAND(SP)	3.2	NP	NP	NP	0.8	2.4											
Field#	Lab#	100.0	80.0	50.0	25.0	20.0	12.5	10.0	5.0	2.5	1.25	0.630	0.315	0.160	0.080	%Breakdown				
● 001	62	100.0	100.0	100.0	100.0	100.0	98.5	98.0	97.0	95.7	93.5	73.7	21.8	10.4	8.1	Gravel	Sand	Silt	Clay	
☒ 002	63	100.0	100.0	100.0	100.0	100.0	95.2	94.3	91.2	88.7	82.1	47.6	6.6	2.3	1.4	3.0	89.0	8.1		

Silt	Sand			Gravel	
	Fine	Medium	Coarse	Fine	Coarse



Highways and Public Works  
Transportation Engineering Branch

LOGGED BY: G.Kennedy  
COMPILED BY: R.Kennedy-Kuiper  
REVIEWED BY: R.Stilwell

Pit # 105-A-08  
Complete: 7/13/2016 9:05:00 AM

GRAIN SIZE ANALYSIS	Gravel Exploration	SOURCE/TP#: 890-5658
J.Magun Contracting	km 1004.2 RHS	PROJECT NO: 552 202955 5502-1
Excavator - undefined	Coordinates:Z9N N6654884m E493930m	ELEVATION: 664m

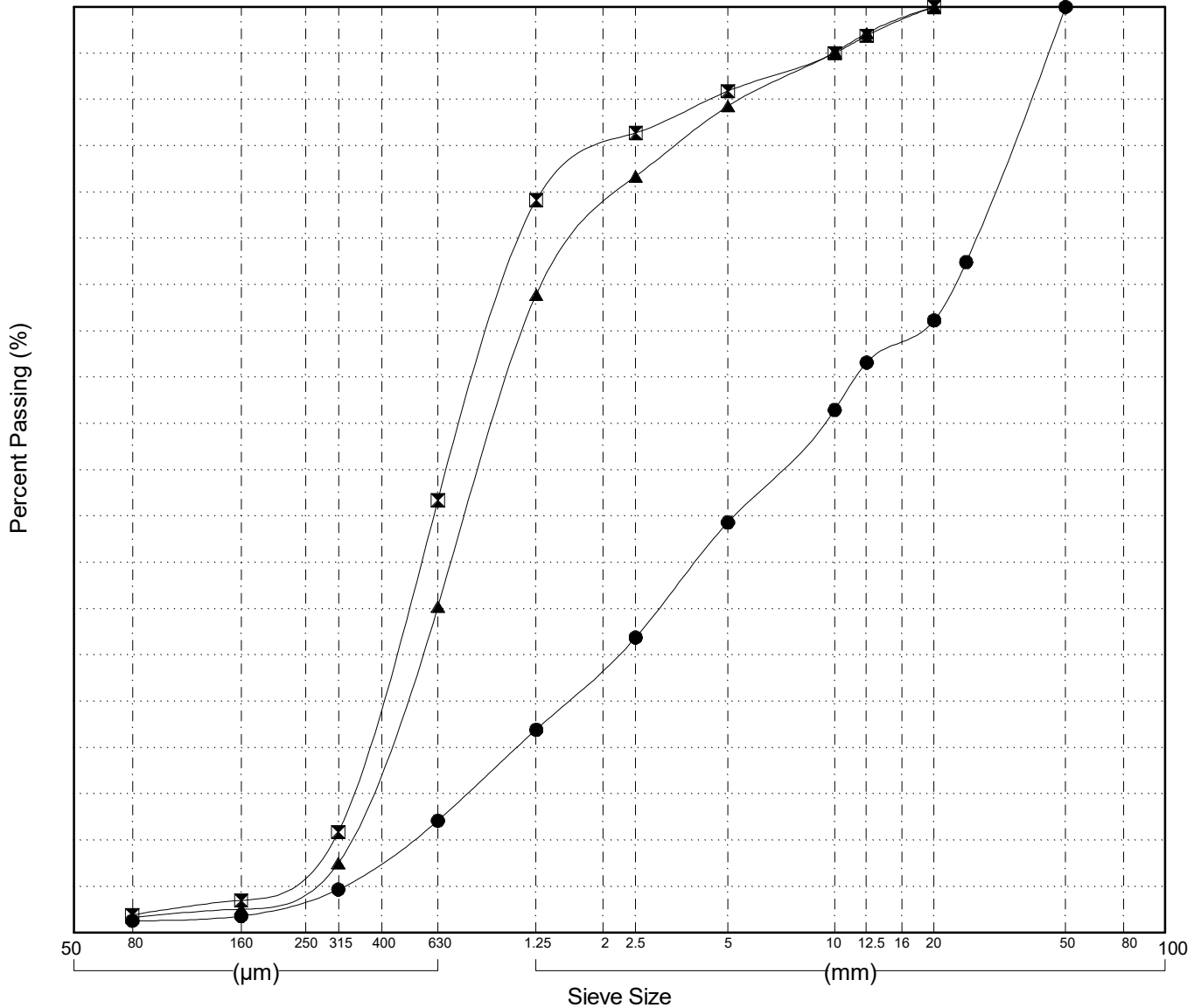
Master Revised July 2013

Field#	Lab#	Depth	Classification	%H2O	LL	PL	PI	Cc	Cu
● 003	64	0.2 to 0.6	POORLY GRADED GRAVEL with SAND(GP)	1.5	NP	NP	NP	0.8	22.5
☒ 004	65	0.8 to 1.2	POORLY GRADED SAND(SP)	2.6	NP	NP	NP	0.9	2.9
▲ 005	66	2.6 to 3.0	POORLY GRADED SAND(SP)	2.5	NP	NP	NP	0.9	3.1

Field#	Lab#	100.0	80.0	50.0	25.0	20.0	12.5	10.0	5.0	2.5	1.25	0.630	0.315	0.160	0.080	%Breakdown			
																Gravel	Sand	Silt	Clay
● 003	64	100.0	100.0	100.0	72.4	66.2	61.6	56.5	44.3	31.9	21.9	12.1	4.7	1.8	1.3	55.7	43.0	1.3	
☒ 004	65	100.0	100.0	100.0	100.0	100.0	96.9	95.0	90.9	86.4	79.1	46.7	10.9	3.5	1.9	9.1	89.0	1.9	
▲ 005	66	100.0	100.0	100.0	100.0	100.0	97.1	95.1	89.3	81.7	68.9	35.2	7.5	2.6	1.7	10.7	87.6	1.7	

Silt	Sand			Gravel	
	Fine	Medium	Coarse	Fine	Coarse



Highways and Public Works  
Transportation Engineering Branch

LOGGED BY: G.Kennedy  
COMPILED BY: R.Kennedy-Kuiper  
REVIEWED BY: R.Stilwell

Pit # 105-A-08  
Complete: 7/13/2016 9:30:00 AM

GRAIN SIZE ANALYSIS	Gravel Exploration	SOURCE/TP#: 890-5659
J.Magun Contracting	km 1004.2 RHS	PROJECT NO: 552 202955 5502-1
Excavator - undefined	Coordinates:Z9N N6654922m E494003m	ELEVATION: 653m

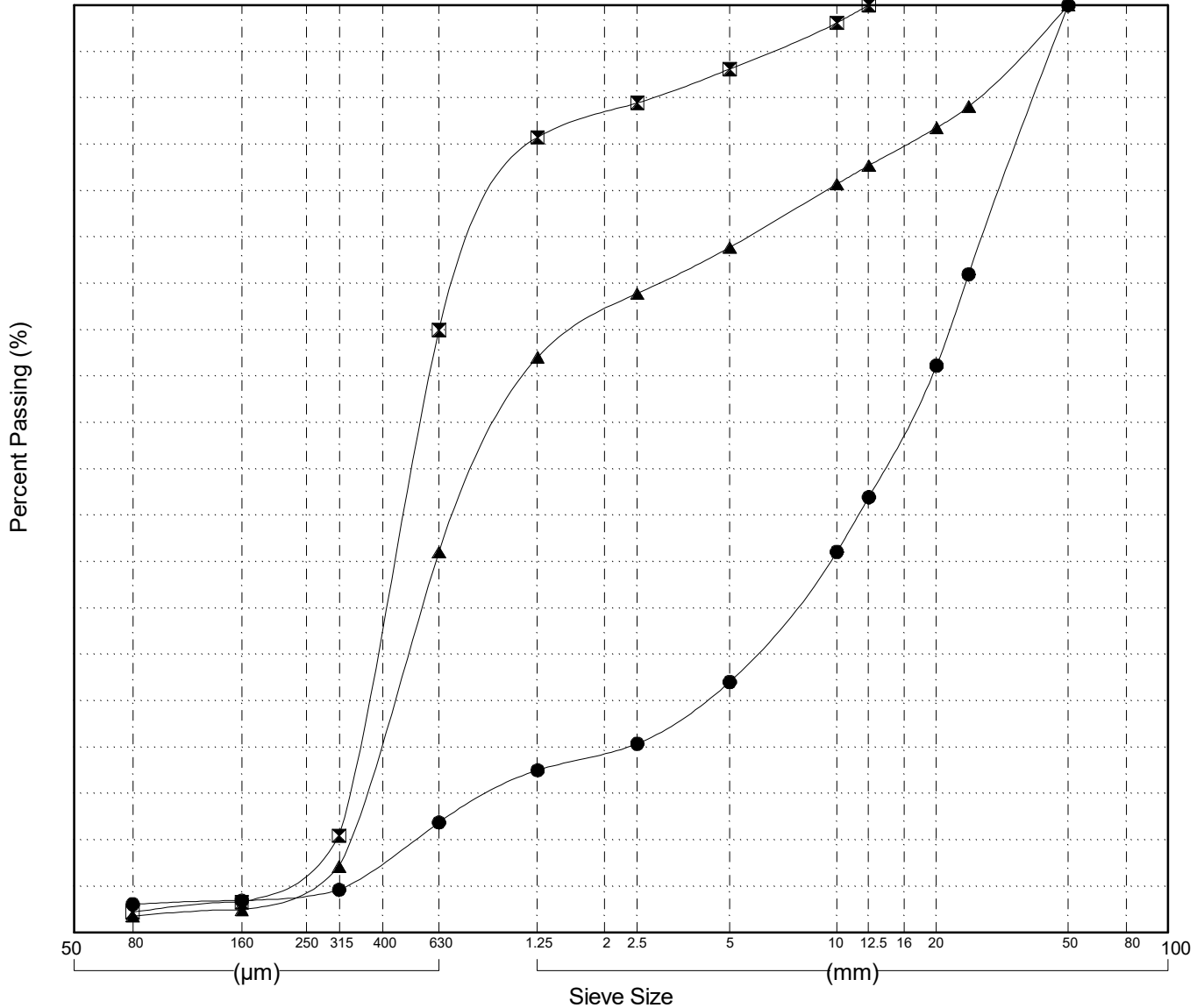
Master Revised July 2013

Field#	Lab#	Depth	Classification	%H2O	LL	PL	PI	Cc	Cu
● 006	67	0.4 to 0.8	POORLY GRADED GRAVEL with SAND(GP)	1.7	NP	NP	NP	3.1	36.6
☒ 007	68	0.8 to 1.2	POORLY GRADED SAND(SP)	3.2	NP	NP	NP	0.9	2.0
▲ 008	69	3.0 to 3.4	POORLY GRADED SAND with GRAVEL(SP)	3.4	NP	NP	NP	0.6	3.5

Field#	Lab#	% PASSING	Sieve Size (mm)													% Breakdown			
			100.0	80.0	50.0	25.0	20.0	12.5	10.0	5.0	2.5	1.25	0.630	0.315	0.160	0.080	Gravel	Sand	Silt
● 006	67	100.0	100.0	100.0	100.0	71.0	61.1	47.0	41.1	27.0	20.4	17.5	11.9	4.6	3.5	3.1	73.0	23.9	3.1
☒ 007	68	100.0	100.0	100.0	100.0	100.0	100.0	98.1	93.1	89.5	85.7	65.0	10.5	3.3	2.2	6.9	90.9	2.2	
▲ 008	69	100.0	100.0	100.0	89.1	86.8	82.7	80.7	73.9	68.9	62.0	41.0	7.1	2.5	1.8	26.1	72.1	1.8	

Silt	Sand			Gravel	
	Fine	Medium	Coarse	Fine	Coarse



Highways and Public Works  
Transportation Engineering Branch

LOGGED BY: G.Kennedy  
COMPILED BY: R.Kennedy-Kuiper  
REVIEWED BY: R.Stilwell

Pit # 105-A-08  
Complete: 7/13/2016 10:10:00 AM  
Page 1 of 1

GRAIN SIZE ANALYSIS	Gravel Exploration	SOURCE/TP#: 890-5660
J.Magun Contracting	km 1004.2 RHS	PROJECT NO: 552 202955 5502-1
Excavator - undefined	Coordinates:Z9N N6654998m E494004m	ELEVATION: 659m

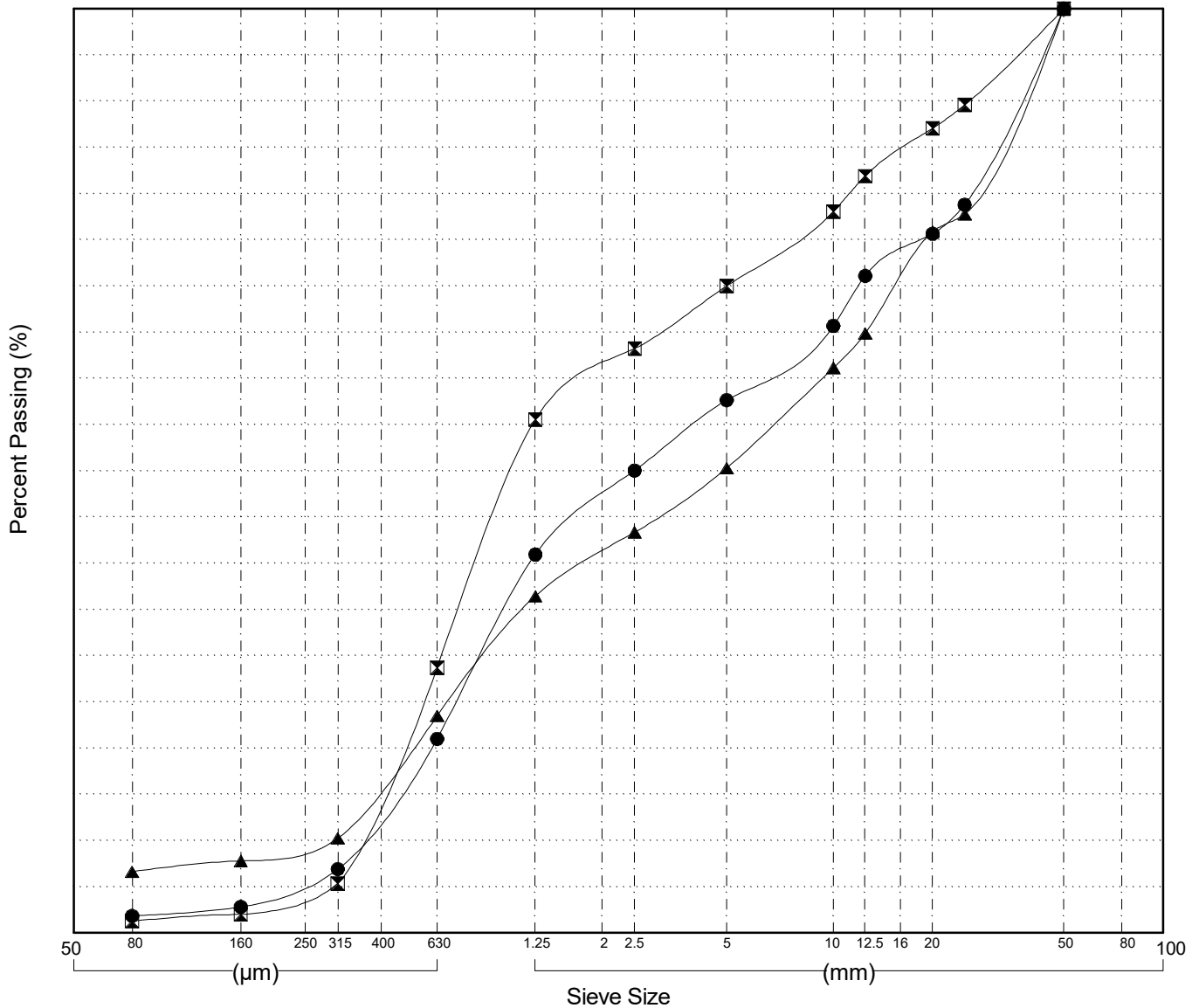
Master Revised July 2013

Field#	Lab#	Depth	Classification	%H2O	LL	PL	PI	Cc	Cu
● 009	70	0.2 to 0.6	POORLY GRADED SAND with GRAVEL(SP)	1.6	NP	NP	NP	0.3	16.1
☒ 010	71	1.6 to 2.0	POORLY GRADED SAND with GRAVEL(SP)	2.4	NP	NP	NP	0.6	5.2
▲ 011	72	3.2 to 3.6	POORLY GRADED GRAVEL with SILT and SAND(GP-GM)	2.3	NP	NP	NP	0.3	31.4

Field#	Lab#	% PASSING															% Breakdown			
			100.0	80.0	50.0	25.0	20.0	12.5	10.0	5.0	2.5	1.25	0.630	0.315	0.160	0.080	Gravel	Sand	Silt	Clay
● 009	70	100.0	100.0	100.0	100.0	78.8	75.6	71.1	65.7	57.6	50.0	40.9	21.0	6.9	2.8	1.9	42.4	55.8	1.9	
☒ 010	71	100.0	100.0	100.0	89.6	87.1	81.9	78.1	70.0	63.2	55.5	28.7	5.3	2.0	1.3	30.0	68.7	1.3		
▲ 011	72	100.0	100.0	100.0	77.7	75.9	64.9	61.1	50.3	43.3	36.4	23.5	10.2	7.8	6.6	49.7	43.7	6.6		

Silt	Sand			Gravel	
	Fine	Medium	Coarse	Fine	Coarse



GRAIN SIZE ANALYSIS	Gravel Exploration	SOURCE/TP#: 890-5666
J.Magun Contracting	km 1004.2 RHS	PROJECT NO: 552 202955 5502-1
Excavator - undefined	Coordinates:Z9N N6655119m E494335m	ELEVATION: 655m

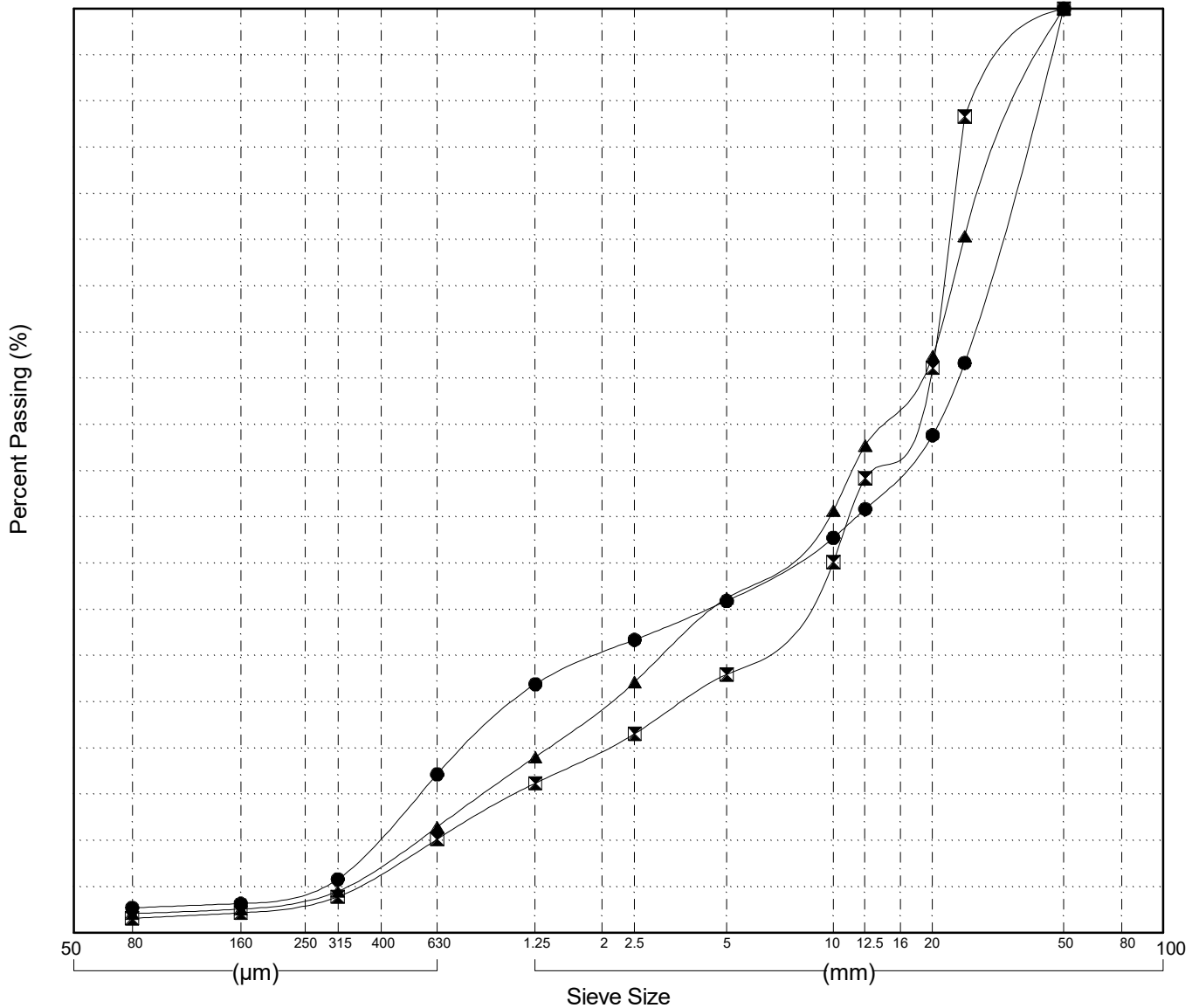
Master Revised July 2013

Field#	Lab#	Depth	Classification	%H2O	LL	PL	PI	Cc	Cu
● 012	73	0.2 to 0.6	POORLY GRADED GRAVEL with SAND(GP)	1.2	NP	NP	NP	0.4	58.6
☒ 013	74	1.6 to 2.0	WELL-GRADED GRAVEL with SAND(GW)	1.7	NP	NP	NP	2.4	30.9
▲ 014	75	3.2 to 3.6	POORLY GRADED GRAVEL with SAND(GP)	2.3	NP	NP	NP	1.0	32.6

Field#	Lab#	% PASSING														% Breakdown			
		100.0	80.0	50.0	25.0	20.0	12.5	10.0	5.0	2.5	1.25	0.630	0.315	0.160	0.080	Gravel	Sand	Silt	Clay
● 012	73	100.0	100.0	100.0	61.7	53.9	45.9	42.8	35.9	31.7	26.9	17.2	5.8	3.2	2.7	64.1	33.2	2.7	
☒ 013	74	100.0	100.0	100.0	88.3	61.1	49.2	40.1	28.0	21.5	16.2	10.1	3.9	2.2	1.6	72.0	26.4	1.6	
▲ 014	75	100.0	100.0	100.0	75.4	62.4	52.7	45.7	36.2	27.1	19.0	11.5	4.5	2.6	2.1	63.8	34.1	2.1	

Silt	Sand			Gravel	
	Fine	Medium	Coarse	Fine	Coarse



Highways and Public Works  
Transportation Engineering Branch

LOGGED BY: G.Kennedy  
COMPILED BY: R.Kennedy-Kuiper  
REVIEWED BY: R.Stilwell

Pit # 105-A-08  
Complete: 7/13/2016 1:05:00 PM

GRAIN SIZE ANALYSIS	Gravel Exploration	SOURCE/TP#: 890-5667
J.Magun Contracting	km 1004.2 RHS	PROJECT NO: 552 202955 5502-1
Excavator - undefined	Coordinates:Z9N N6655096m E494431m	ELEVATION: 654m

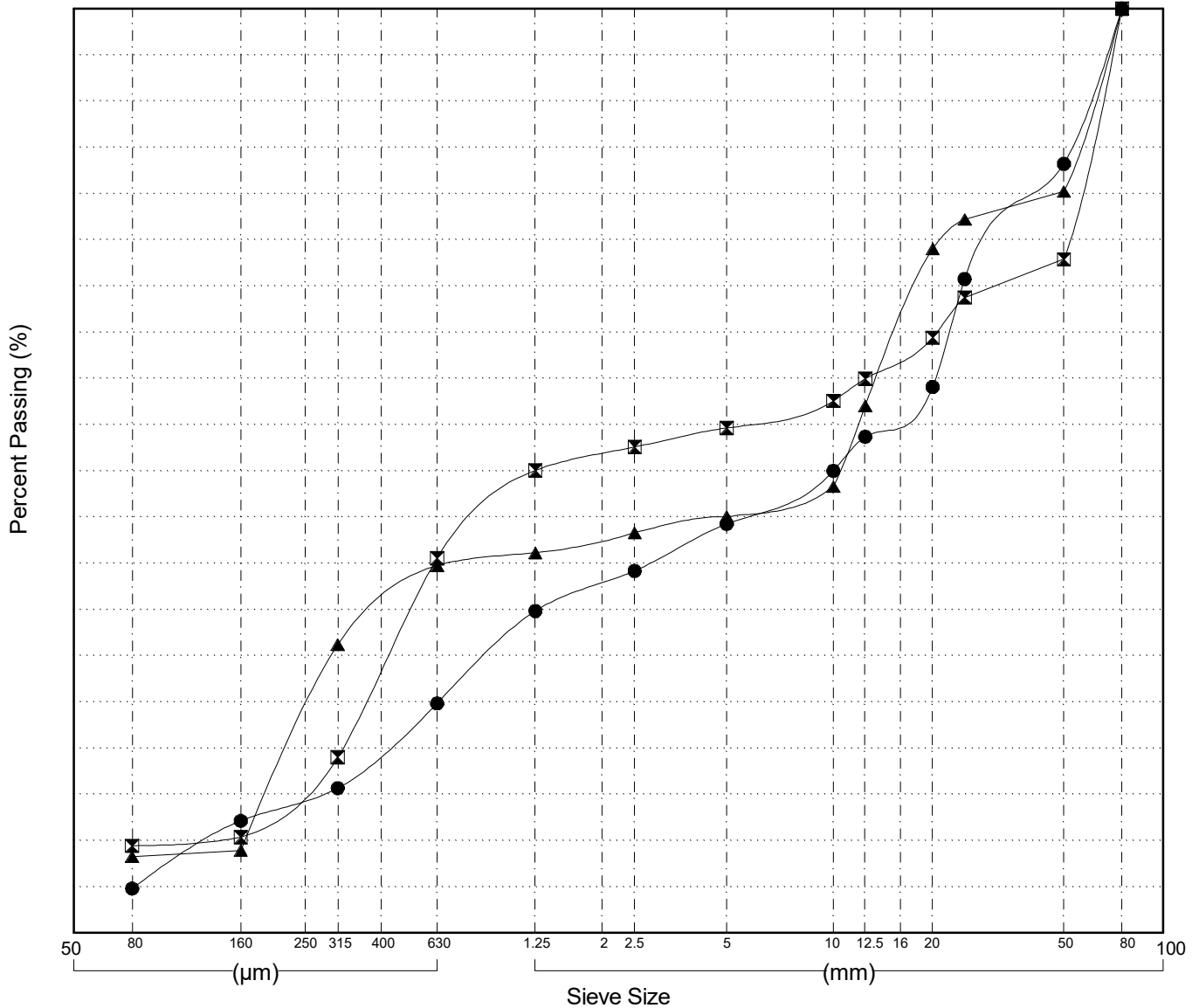
Master Revised July 2013

Field#	Lab#	Depth	Classification	%H2O	LL	PL	PI	Cc	Cu
● 015	76	0.2 to 0.6	POORLY GRADED GRAVEL with SAND(GP)	1.7	NP	NP	NP	0.3	158.7
☒ 016	77	1.6 to 2.0	POORLY GRADED GRAVEL with SILT and SAND(GP-GM)	2.7	NP	NP	NP	0.1	105.7
▲ 017	78	3.2 to 3.6	POORLY GRADED GRAVEL with SILT and SAND(GP-GM)	1.9	NP	NP	NP	0.0	82.2

Field#	Lab#	% PASSING	Sieve Size (mm)													% Breakdown			
			100.0	80.0	50.0	25.0	20.0	12.5	10.0	5.0	2.5	1.25	0.630	0.315	0.160	0.080	Gravel	Sand	Silt
● 015	76	100.0	100.0	83.2	70.8	59.1	53.7	50.0	44.2	39.2	34.8	24.8	15.7	12.1	4.8	55.8	39.4	4.8	
☒ 016	77	100.0	100.0	72.9	68.8	64.4	60.0	57.6	54.6	52.6	50.0	40.6	19.0	10.4	9.4	45.4	45.2	9.4	
▲ 017	78	100.0	100.0	80.2	77.2	74.0	57.0	48.3	45.0	43.3	41.1	39.7	31.2	8.9	8.3	55.0	36.8	8.3	

Silt	Sand			Gravel	
	Fine	Medium	Coarse	Fine	Coarse



Highways and Public Works  
Transportation Engineering Branch

LOGGED BY: G.Kennedy  
COMPILED BY: R.Kennedy-Kuiper  
REVIEWED BY: R.Stilwell

Pit # 105-A-08  
Complete: 7/13/2016 1:35:00 PM

GRAIN SIZE ANALYSIS	Gravel Exploration	SOURCE/TP#: 890-5668
J.Magun Contracting	km 1004.2 RHS	PROJECT NO: 552 202955 5502-1
Excavator - undefined	Coordinates:Z9N N6655058m E494372m	ELEVATION: 650m

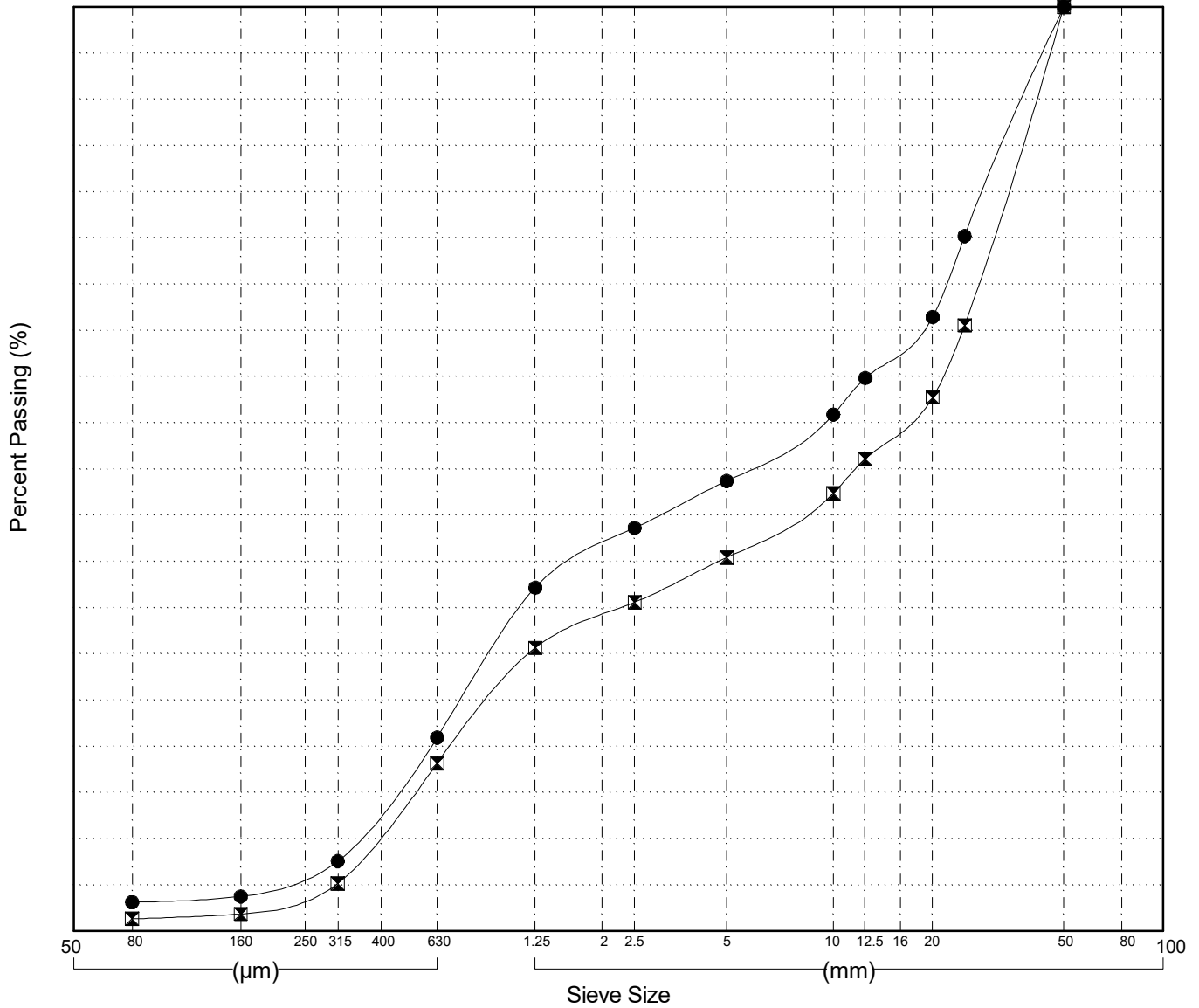
Master Revised July 2013

Field#	Lab#	Depth	Classification	%H2O	LL	PL	PI	Cc	Cu
● 019	80	1.6 to 2.0	POORLY GRADED GRAVEL with SAND(GP)	2.0	NP	NP	NP	0.2	35.4
☒ 020	81	3.2 to 3.6	POORLY GRADED GRAVEL with SAND(GP)	1.8	NP	NP	NP	0.2	52.3

Field#	Lab#	100.0	80.0	50.0	25.0	20.0	12.5	10.0	5.0	2.5	1.25	0.630	0.315	0.160	0.080	%Breakdown			
		%PASSING														Gravel	Sand	Silt	Clay
● 019	80	100.0	100.0	100.0	75.2	66.4	59.8	55.9	48.7	43.6	37.2	21.0	7.6	3.8	3.1	51.3	45.6	3.1	
☒ 020	81	100.0	100.0	100.0	65.5	57.7	51.1	47.4	40.4	35.6	30.7	18.2	5.2	1.9	1.3	59.6	39.1	1.3	

Silt	Sand			Gravel	
	Fine	Medium	Coarse	Fine	Coarse



Highways and Public Works  
Transportation Engineering Branch

LOGGED BY: G.Kennedy  
COMPILED BY: R.Kennedy-Kuiper  
REVIEWED BY: R.Stilwell

Pit # 105-A-08  
Complete: 7/13/2016 2:00:00 PM

GRAIN SIZE ANALYSIS	Gravel Exploration	SOURCE/TP#: 890-5669
J.Magun Contracting	km 1004.2 RHS	PROJECT NO: 552 202955 5502-1
Excavator - undefined	Coordinates:Z9N N6655036m E494471m	ELEVATION: 660m

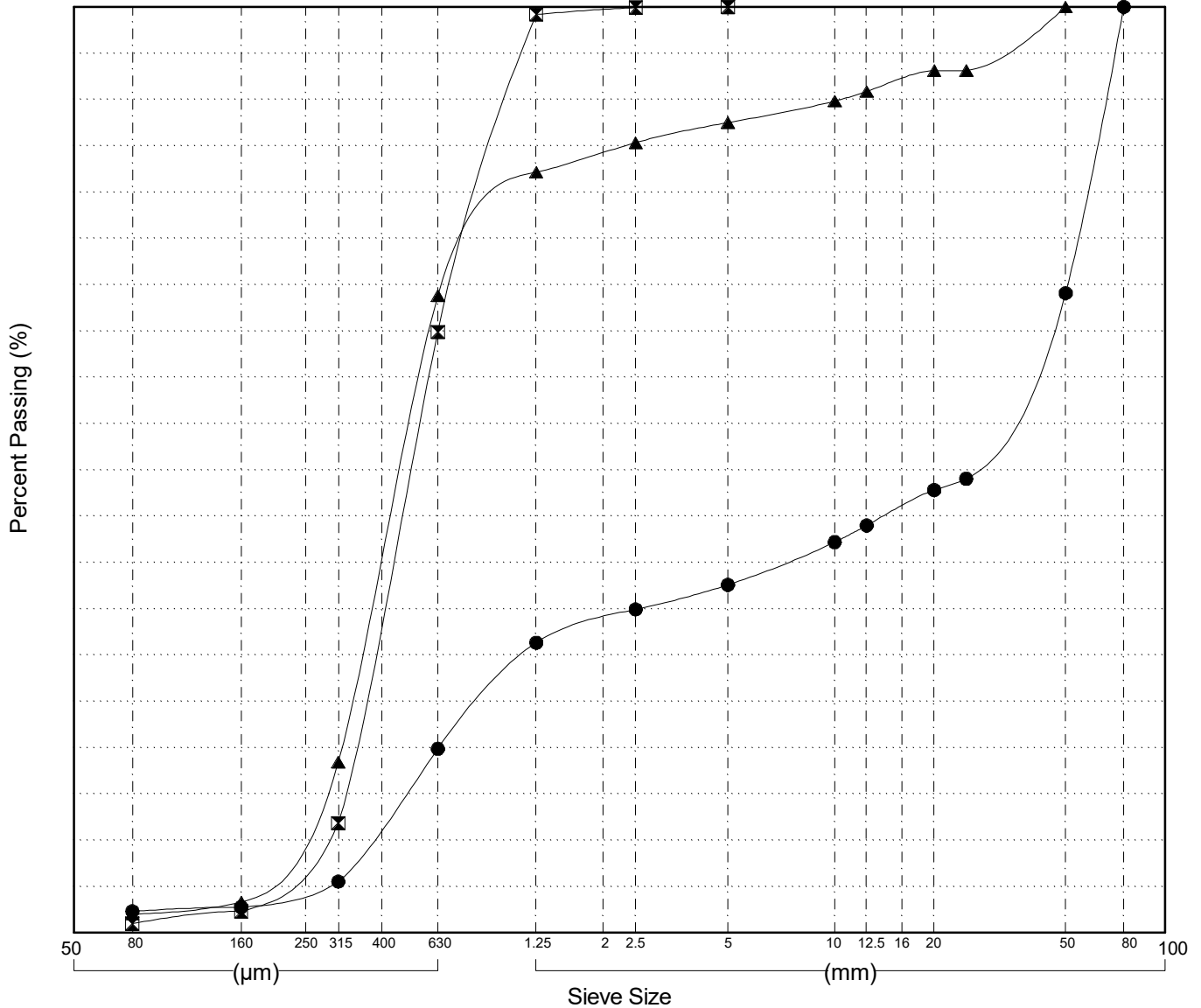
Master Revised July 2013

Field#	Lab#	Depth	Classification	%H2O	LL	PL	PI	Cc	Cu
● 021	82	0.2 to 0.6	POORLY GRADED GRAVEL with SAND(GP)	1.2	NP	NP	NP	0.1	93.5
☒ 022	83	1.6 to 2.0	POORLY GRADED SAND(SP)	4.3	NP	NP	NP	1.0	2.1
▲ 023	84	2.8 to 3.2	POORLY GRADED SAND(SP)	2.9	NP	NP	NP	1.1	2.6

Field#	Lab#	100.0	80.0	50.0	25.0	20.0	12.5	10.0	5.0	2.5	1.25	0.630	0.315	0.160	0.080	%Breakdown			
		% PASSING														Gravel	Sand	Silt	Clay
● 021	82	100.0	100.0	69.1	49.0	47.8	44.0	42.2	37.6	34.9	31.3	19.9	5.5	2.8	2.3	62.4	35.2	2.3	
☒ 022	83	100.0	100.0	100.0	100.0	100.0	100.0	100.0	100.0	99.9	99.2	64.9	11.9	2.3	1.0	0.0	99.0	1.0	
▲ 023	84	100.0	100.0	100.0	93.1	93.1	90.9	89.8	87.5	85.3	82.2	68.8	18.5	3.3	2.0	12.5	85.5	2.0	

Silt	Sand			Gravel	
	Fine	Medium	Coarse	Fine	Coarse



GRAIN SIZE ANALYSIS	Gravel Exploration	SOURCE/TP#: 890-5670
J.Magun Contracting	km 1004.2 RHS	PROJECT NO: 552 202955 5502-1
Excavator - undefined	Coordinates:Z9N N6655001m E494413m	ELEVATION: 660m

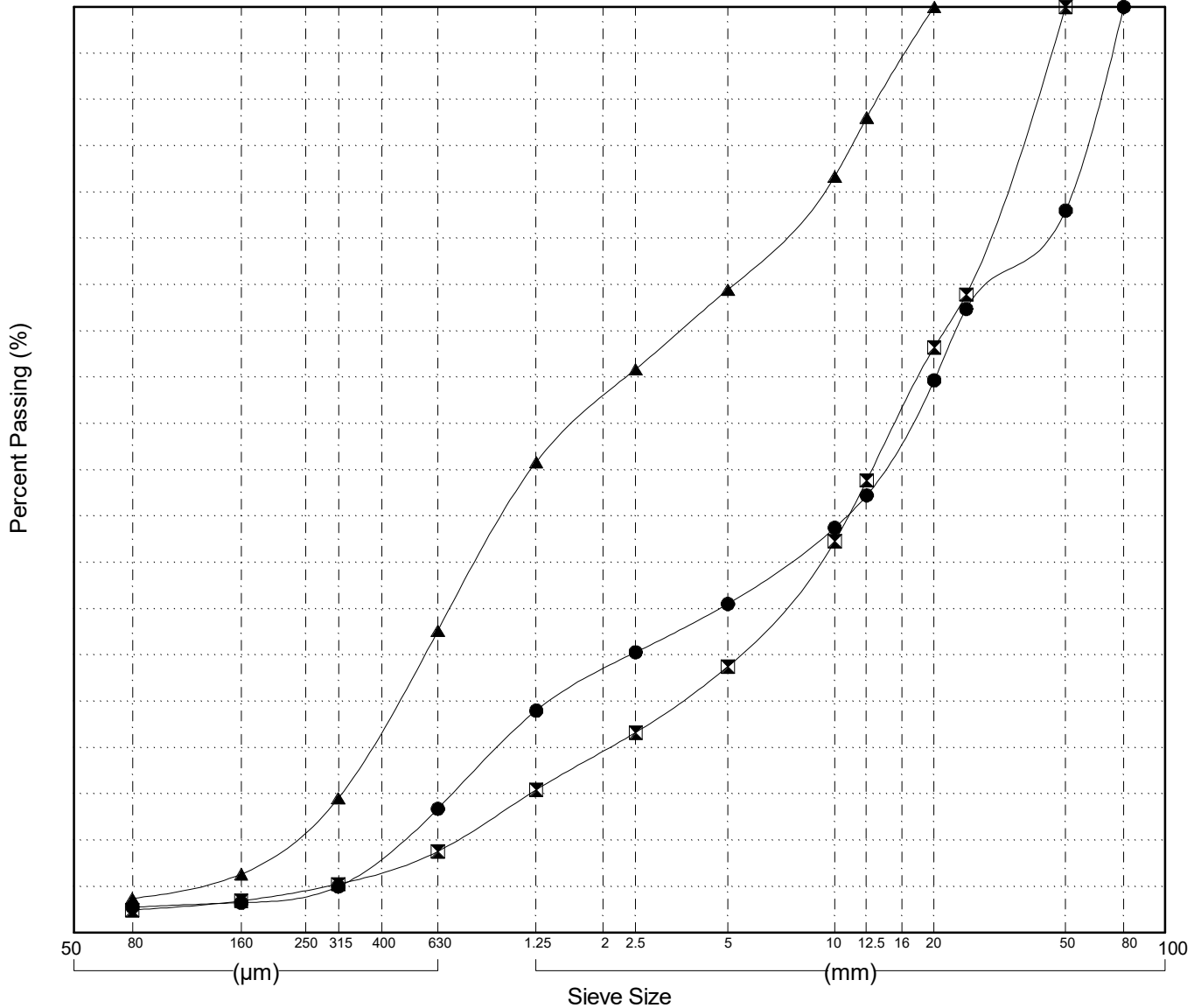
Master Revised July 2013

Field#	Lab#	Depth	Classification	%H2O	LL	PL	PI	Cc	Cu
● 024	85	0.2 to 0.6	POORLY GRADED GRAVEL with SAND(GP)	1.0	NP	NP	NP	0.6	42.4
☒ 025	86	1.6 to 2.0	WELL-GRADED GRAVEL with SAND(GW)	1.3	NP	NP	NP	2.0	25.2
▲ 026	87	3.2 to 3.6	POORLY GRADED SAND with GRAVEL(SP)	2.5	NP	NP	NP	0.6	10.9

Field#	Lab#	% PASSING	Sieve Size (mm)													% Breakdown			
			100.0	80.0	50.0	25.0	20.0	12.5	10.0	5.0	2.5	1.25	0.630	0.315	0.160	0.080	Gravel	Sand	Silt
● 024	85	100.0	100.0	78.0	67.4	59.7	47.3	43.7	35.5	30.3	24.0	13.4	5.0	3.3	2.8	64.5	32.7	2.8	
☒ 025	86	100.0	100.0	100.0	68.9	63.2	48.9	42.3	28.7	21.6	15.4	8.8	5.3	3.5	2.5	71.3	26.3	2.5	
▲ 026	87	100.0	100.0	100.0	100.0	100.0	88.0	81.7	69.5	60.9	50.8	32.6	14.5	6.3	3.7	30.5	65.7	3.7	

Silt	Sand			Gravel	
	Fine	Medium	Coarse	Fine	Coarse



GRAIN SIZE ANALYSIS	Gravel Exploration	SOURCE/TP#: 890-5671
J.Magun Contracting	km 1004.2 RHS	PROJECT NO: 552 202955 5502-1
Excavator - undefined	Coordinates:Z9N N6655023m E494314m	ELEVATION: 672m

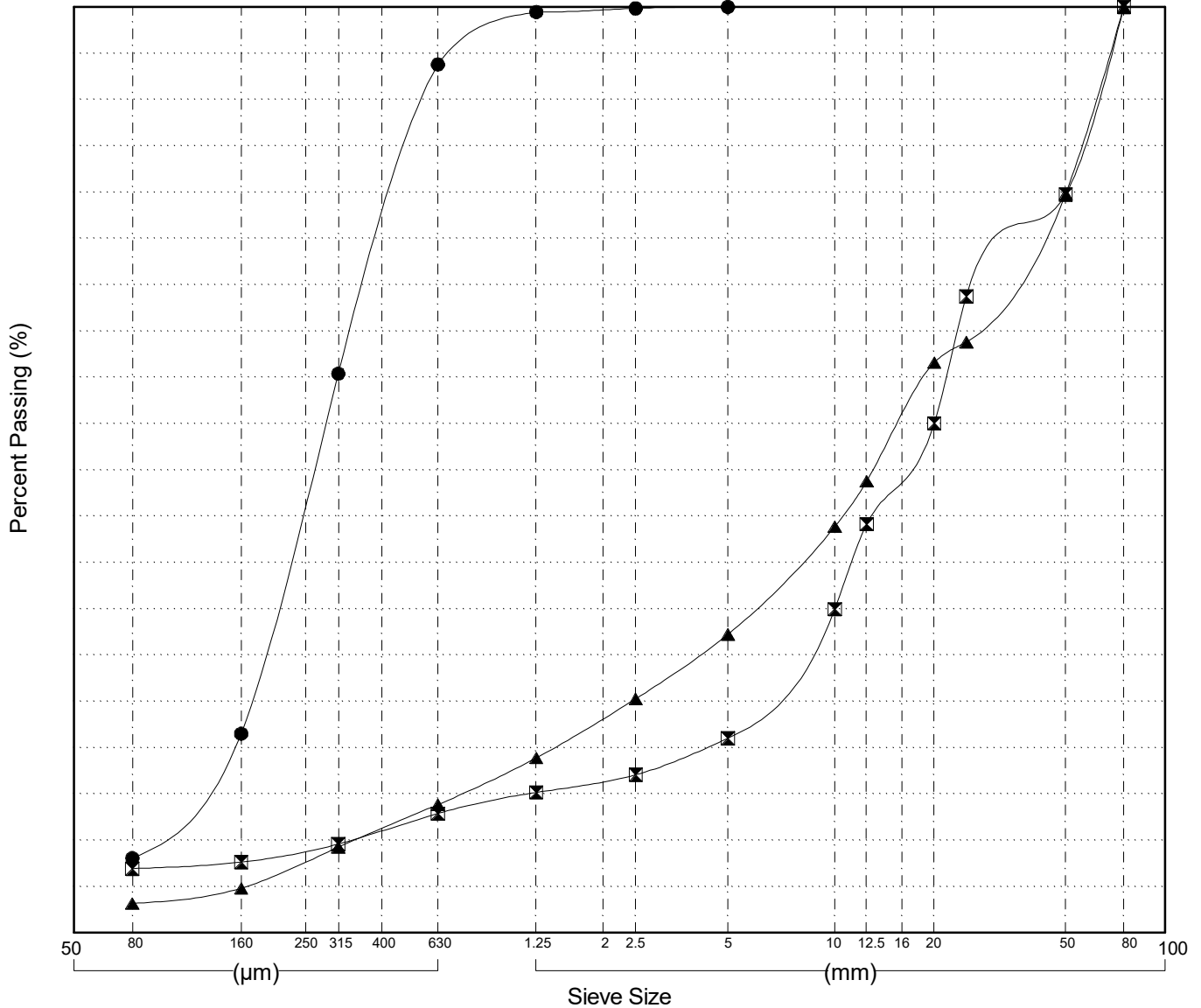
Master Revised July 2013

Field#	Lab#	Depth	Classification	%H2O	LL	PL	PI	Cc	Cu
● 027	88	0.2 to 0.6	POORLY GRADED SAND with SILT(SP-SM)	3.6	NP	NP	NP	1.3	3.7
☒ 028	89	1.2 to 1.6	POORLY GRADED GRAVEL with SILT(GP-GM)	2.9	NP	NP	NP	7.9	63.2
▲ 029	90	3.2 to 3.6	WELL-GRADED GRAVEL with SAND(GW)	2.1	NP	NP	NP	2.3	53.6

Field#	Lab#	100.0	80.0	50.0	25.0	20.0	12.5	10.0	5.0	2.5	1.25	0.630	0.315	0.160	0.080	%Breakdown			
		%PASSING														Gravel	Sand	Silt	Clay
● 027	88	100.0	100.0	100.0	100.0	100.0	100.0	100.0	100.0	99.8	99.4	93.8	60.4	21.5	8.1	0.0	91.9	8.1	
☒ 028	89	100.0	100.0	79.7	68.7	55.0	44.1	35.0	21.0	17.1	15.2	12.9	9.6	7.6	6.9	79.0	14.1	6.9	
▲ 029	90	100.0	100.0	79.8	63.8	61.6	48.8	43.9	32.2	25.3	18.9	13.8	9.3	4.8	3.2	67.8	29.0	3.2	

Silt	Sand			Gravel	
	Fine	Medium	Coarse	Fine	Coarse



Highways and Public Works  
Transportation Engineering Branch

LOGGED BY: G.Kennedy  
COMPILED BY: R.Kennedy-Kuiper  
REVIEWED BY: R.Stilwell

Pit # 105-A-08  
Complete: 7/13/2016 4:20:00 PM

SUBSURFACE EXPLORATION AND TEST REPORT	Alaska Highway #1	SOURCE/TP#: 890-5657
J.Magun Contracting	Gravel Exploration, km 1004.2 RHS	PROJECT NO: 552 202955 5502-1
Excavator - undefined	Coordinates: Z9N N6654849m E493999m	ELEVATION: 662m

## PHOTOS



Figure 890-5657.1  
Photo of sample piles from test pit 890-5657



Figure 890-5657.2  
Photo of test pit 890-5657



SUBSURFACE EXPLORATION AND TEST REPORT	Alaska Highway #1	SOURCE/TP#: 890-5658
J.Magun Contracting	Gravel Exploration, km 1004.2 RHS	PROJECT NO: 552 202955 5502-1
Excavator - undefined	Coordinates: Z9N N6654884m E493930m	ELEVATION: 664m

## PHOTOS



Figure 890-5658.1  
Photo of sample piles from test pit 890-5658



Figure 890-5658.2  
Photo of test pit 890-5658



SUBSURFACE EXPLORATION AND TEST REPORT	Alaska Highway #1	SOURCE/TP#: 890-5659
J.Magun Contracting	Gravel Exploration, km 1004.2 RHS	PROJECT NO: 552 202955 5502-1
Excavator - undefined	Coordinates: Z9N N6654922m E494003m	ELEVATION: 653m

## PHOTOS



Figure 890-5659.1  
Photo of sample piles from test pit 890-5659



Figure 890-5659.2  
Photo of test pit 890-5659

SUBSURFACE EXPLORATION AND TEST REPORT	Alaska Highway #1	SOURCE/TP#: 890-5660
J.Magun Contracting	Gravel Exploration, km 1004.2 RHS	PROJECT NO: 552 202955 5502-1
Excavator - undefined	Coordinates: Z9N N6654998m E494004m	ELEVATION: 659m

## PHOTOS



Figure 890-5660.1  
Photo of sample piles from test pit 890-5660



Figure 890-5660.2  
Photo of test pit 890-5660

SUBSURFACE EXPLORATION AND TEST REPORT	Alaska Highway #1	SOURCE/TP#: 890-5666
J.Magun Contracting	Gravel Exploration, km 1004.2 RHS	PROJECT NO: 552 202955 5502-1
Excavator - undefined	Coordinates: Z9N N6655119m E494335m	ELEVATION: 655m

## PHOTOS



Figure 890-5666.1  
Photo of sample piles from test pit 890-5666



Figure 890-5666.2  
Photo of test pit 890-5666



SUBSURFACE EXPLORATION AND TEST REPORT	Alaska Highway #1	SOURCE/TP#: 890-5667
J.Magun Contracting	Gravel Exploration, km 1004.2 RHS	PROJECT NO: 552 202955 5502-1
Excavator - undefined	Coordinates: Z9N N6655096m E494431m	ELEVATION: 654m

## PHOTOS



Figure 890-5667.1  
Photo of sample piles from test pit 890-5667



Figure 890-5667.2  
Photo of test pit 890-5667



SUBSURFACE EXPLORATION AND TEST REPORT	Alaska Highway #1	SOURCE/TP#: 890-5668
J.Magun Contracting	Gravel Exploration, km 1004.2 RHS	PROJECT NO: 552 202955 5502-1
Excavator - undefined	Coordinates: Z9N N6655058m E494372m	ELEVATION: 650m

## PHOTOS



Figure 890-5668.1  
Photo of sample piles from test pit 890-5668



Figure 890-5668.2  
Photo of test pit 890-5668

SUBSURFACE EXPLORATION AND TEST REPORT	Alaska Highway #1	SOURCE/TP#: 890-5669
J.Magun Contracting	Gravel Exploration, km 1004.2 RHS	PROJECT NO: 552 202955 5502-1
Excavator - undefined	Coordinates: Z9N N6655036m E494471m	ELEVATION: 660m

## PHOTOS



Figure 890-5669.1  
Photo of sample piles from test pit 890-5669



Figure 890-5669.2  
Photo of test pit 890-5669

SUBSURFACE EXPLORATION AND TEST REPORT	Alaska Highway #1	SOURCE/TP#: 890-5670
J.Magun Contracting	Gravel Exploration, km 1004.2 RHS	PROJECT NO: 552 202955 5502-1
Excavator - undefined	Coordinates: Z9N N6655001m E494413m	ELEVATION: 660m

## PHOTOS



Figure 890-5670.1  
Photo of sample piles from test pit 890-5670



Figure 890-5670.2  
Photo of test pit 890-5670

SUBSURFACE EXPLORATION AND TEST REPORT	Alaska Highway #1	SOURCE/TP#: 890-5671
J.Magun Contracting	Gravel Exploration, km 1004.2 RHS	PROJECT NO: 552 202955 5502-1
Excavator - undefined	Coordinates: Z9N N6655023m E494314m	ELEVATION: 672m

## PHOTOS



Figure 890-5671.1  
Photo of sample piles from test pit 890-5671



Figure 890-5671.2  
Photo of test pit 890.5671