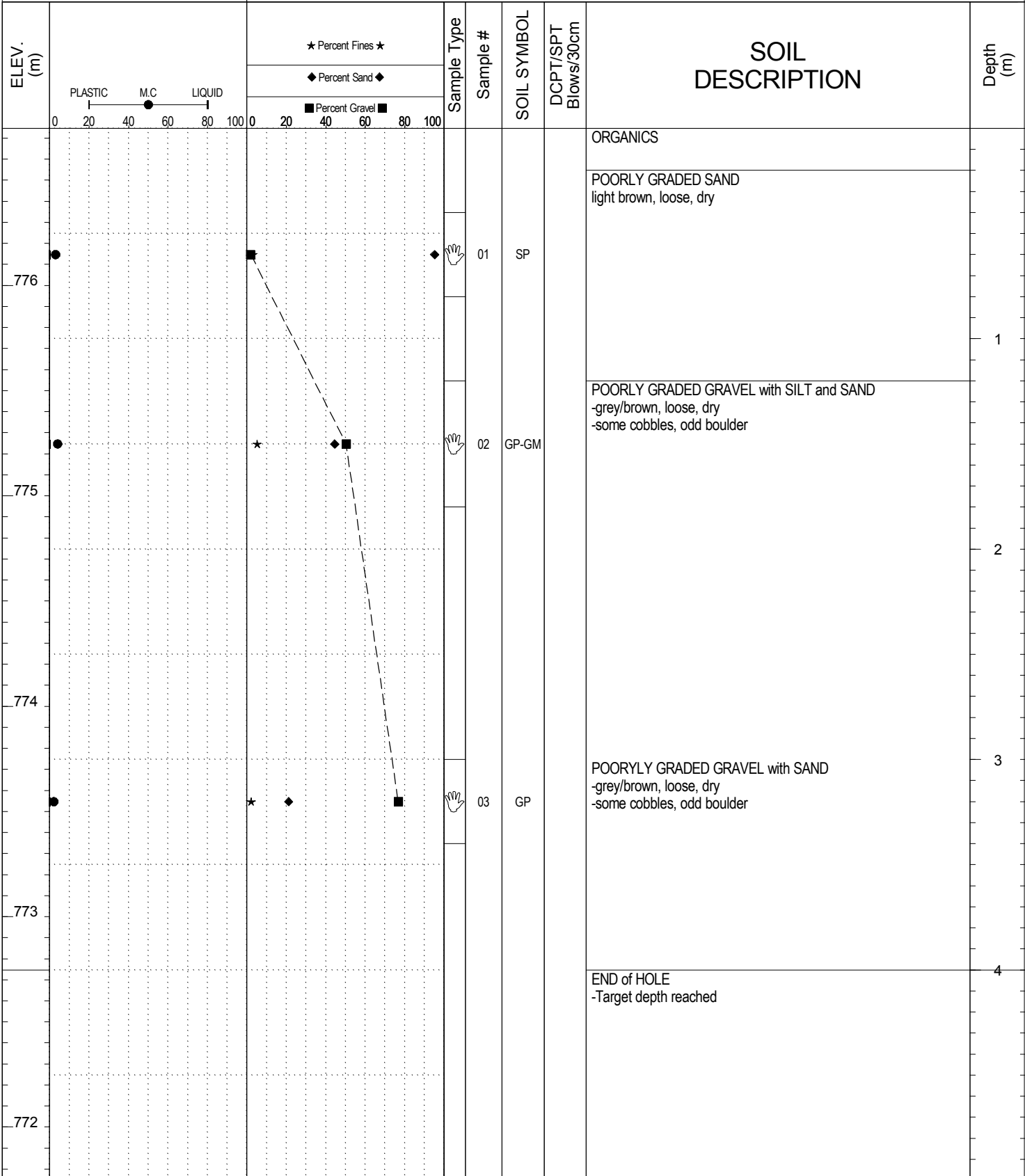
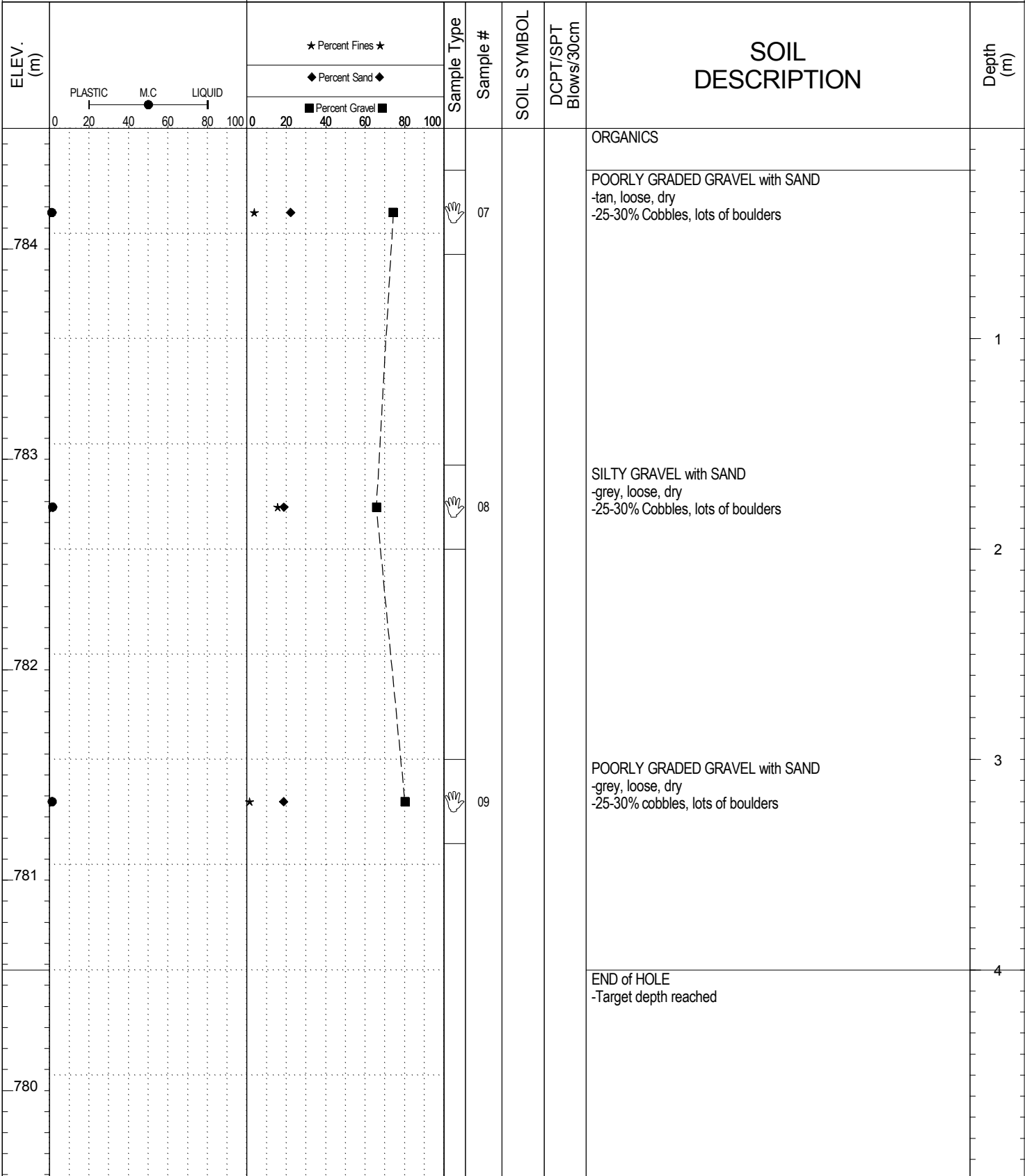


SAMPLE TYPE UNDISTURBED DCPT AUGER BULK SPT CORE

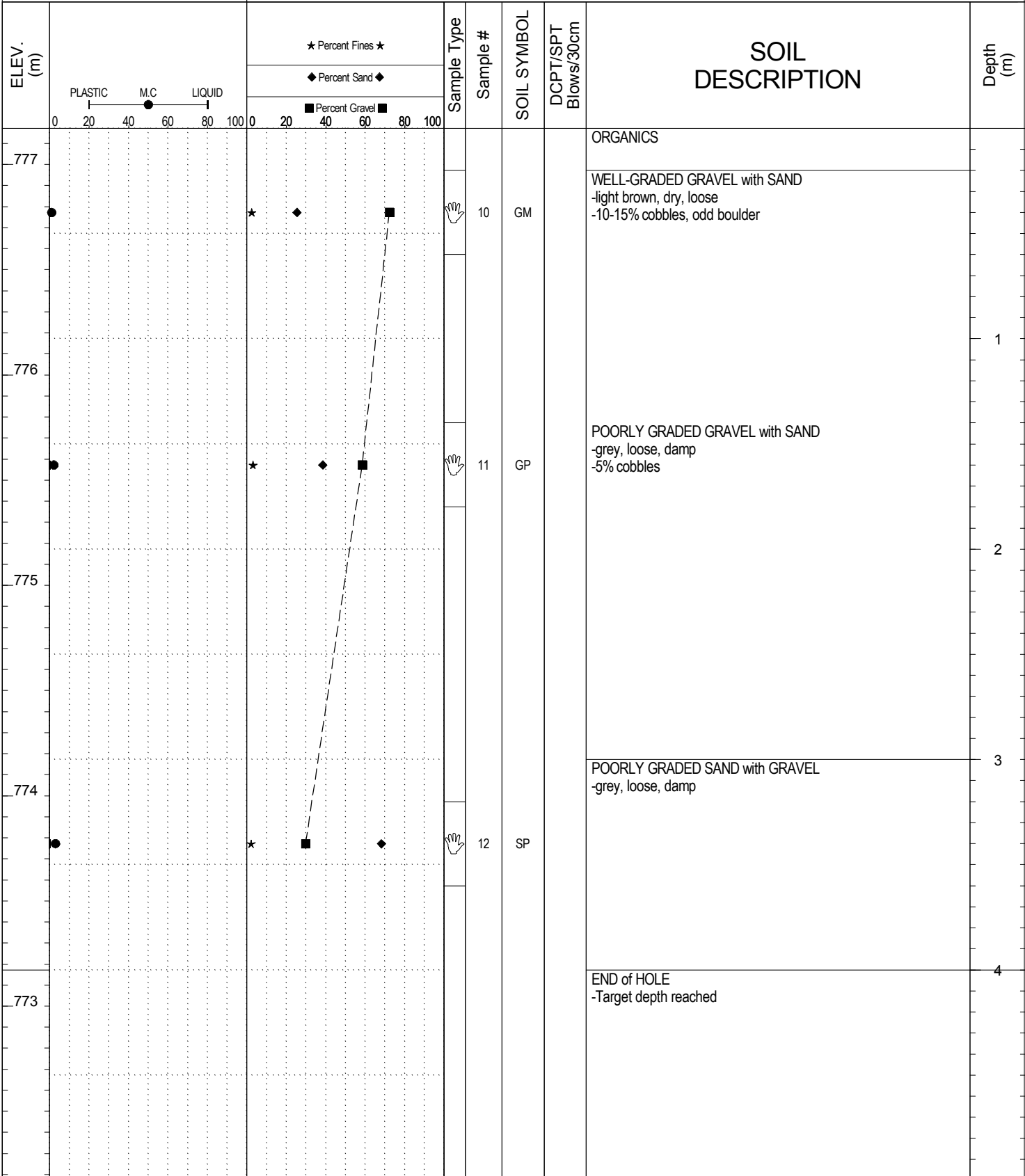


SUBSURFACE EXPLORATION AND TEST REPORT		Alaska Highway #1		SOURCE/TP#: 891-5627				
J.Magun Contracting		Gravel Exploration, km 1062.1 RHS		PROJECT NO: 552-202955- 5501-1				
Hitachi 200 LC		Coordinates: Z9N N6674125m E441919m		ELEVATION: 784.330261m				
SAMPLE TYPE		<input type="checkbox"/> UNDISTURBED <input checked="" type="checkbox"/> DCPT <input checked="" type="checkbox"/> AUGER <input type="checkbox"/> BULK <input checked="" type="checkbox"/> SPT <input type="checkbox"/> CORE						
ELEV. (m)	<div style="display: flex; justify-content: space-between;"> <div style="width: 45%;"> <p>PLASTIC M.C LIQUID</p> <p>0 20 40 60 80 100</p> </div> <div style="width: 45%;"> <p>★ Percent Fines ★</p> <p>◆ Percent Sand ◆</p> <p>■ Percent Gravel ■</p> <p>0 20 40 60 80 100</p> </div> </div>		Sample Type	Sample #	SOIL SYMBOL	DCPT/SPT Blows/30cm	SOIL DESCRIPTION	Depth (m)
784			Hand	04	GP-GM	ORGANICS	1	
783			Hand	05	GP	POORLY GRADED GRAVEL with SILT -tan/grey, loose, dry -20-25% cobbles and boulders	2	
782						POORLY GRADED GRAVEL with SAND -grey, loose dry -10-15% cobbles	3	
781			Hand	06	GP	-5-10% cobbles	4	
780						END of HOLE -Target depth reached		

SAMPLE TYPE UNDISTURBED DCPT AUGER BULK SPT CORE



SAMPLE TYPE UNDISTURBED DCPT AUGER BULK SPT CORE



SUBSURFACE EXPLORATION AND TEST REPORT		Alaska Highway #1		SOURCE/TP#: 891-5630								
J.Magun Contracting		Gravel Exploration, km 1062.1 RHS		PROJECT NO: 552-202955- 5501-1								
Hitachi 200 LC		Coordinates: Z9N N6674200m E441928m		ELEVATION: 780.631042m								
SAMPLE TYPE		UNDISTURBED		DCPT								
		AUGER		BULK								
		SPT		CORE								
ELEV. (m)	PLASTIC	M.C	LIQUID	★ Percent Fines ★	◆ Percent Sand ◆	■ Percent Gravel ■	Sample Type	Sample #	SOIL SYMBOL	DCPT/SPT Blows/30cm	SOIL DESCRIPTION	Depth (m)
	0	20	40	60	80	100	0	20	40	60	80	100
780				★	◆	■	Hand	13	SP		ORGANICS	1
											POORLY GRADED SAND with GRAVEL -brown, loose, damp	
											POORLY GRADED SAND -grey, loose, damp -odd cobble	
779				★	◆	■	Hand	14	SP			2
778												3
777				★	◆	■	Hand	15	SP			4
776											END of HOLE -Target depth reached	



SUBSURFACE EXPLORATION AND TEST REPORT		Alaska Highway #1		SOURCE/TP#: 891-5631				
J.Magun Contracting		Gravel Exploration, km 1062.1 RHS		PROJECT NO: 552-202955- 5501-1				
Hitachi 200 LC		Coordinates: Z9N N6674193m E442002m		ELEVATION: 781.341797m				
SAMPLE TYPE		<input type="checkbox"/> UNDISTURBED <input checked="" type="checkbox"/> DCPT <input checked="" type="checkbox"/> AUGER <input type="checkbox"/> BULK <input checked="" type="checkbox"/> SPT <input type="checkbox"/> CORE						
ELEV. (m)	★ Percent Fines ★ ◆ Percent Sand ◆ ■ Percent Gravel ■		Sample Type	Sample #	SOIL SYMBOL	DCPT/SPT Blows/30cm	SOIL DESCRIPTION	Depth (m)
	PLASTIC M.C LIQUID 0 20 40 60 80 100 0 20 40 60 80 100							
781				16	SP-SM		ORGANICS POORLY GRADED SAND with SILT -brown, loose, damp -odd cobble	1
780				17	SP		POORLY GRADED SAND with GRAVEL grey, loose, damp	2
779								3
778				18	SP		-5% cobbles	4
777							END of HOLE -Target depth reached	



SUBSURFACE EXPLORATION AND TEST REPORT		Alaska Highway #1		SOURCE/TP#: 891-5632				
J.Magun Contracting		Gravel Exploration, km 1062.1 RHS		PROJECT NO: 552-202955- 5501-1				
Hitachi 200 LC		Coordinates: Z9N N6674266m E442007m		ELEVATION: 778.665161m				
SAMPLE TYPE		<input type="checkbox"/> UNDISTURBED <input checked="" type="checkbox"/> DCPT <input checked="" type="checkbox"/> AUGER <input type="checkbox"/> BULK <input checked="" type="checkbox"/> SPT <input type="checkbox"/> CORE						
ELEV. (m)	<div style="display: flex; justify-content: space-between;"> <div style="text-align: center;"> <p>PLASTIC M.C LIQUID</p> <p>0 20 40 60 80 100</p> </div> <div style="text-align: center;"> <p>★ Percent Fines ★</p> <p>◆ Percent Sand ◆</p> <p>■ Percent Gravel ■</p> <p>0 20 40 60 80 100</p> </div> </div>		Sample Type	Sample #	SOIL SYMBOL	DCPT/SPT Blows/30cm	SOIL DESCRIPTION	Depth (m)
778			Hand	19	GP		<p>ORGANICS</p> <p>POORLY GRADED GRAVEL with SAND -light tan, loose, dry -15-20% Cobbles, odd boulder</p>	1
777			Hand	20	GW		<p>WELL-GRADED GRAVEL with SAND -brown, loose, dry -25-30% cobbles, lots of boulders</p>	2
776								
775			Hand	21	GP		<p>POORLY GRADED GRAVEL with SAND -brown, loose, dry -25-30% cobbles, lots of boulders</p>	3
774							<p>END of HOLE -Target depth reached</p>	4

SUBSURFACE EXPLORATION AND TEST REPORT		Alaska Highway #1		SOURCE/TP#: 891-5633				
J.Magun Contracting		Gravel Exploration, km 1062.1 RHS		PROJECT NO: 552-202955- 5501-1				
Hitachi 200 LC		Coordinates: Z9N N6674274m E441934m		ELEVATION: 778.371826m				
SAMPLE TYPE		<input type="checkbox"/> UNDISTURBED <input checked="" type="checkbox"/> DCPT		<input checked="" type="checkbox"/> AUGER <input type="checkbox"/> BULK <input checked="" type="checkbox"/> SPT <input type="checkbox"/> CORE				
ELEV. (m)	PLASTIC M.C LIQUID 0 20 40 60 80 100	★ Percent Fines ★ ◆ Percent Sand ◆ ■ Percent Gravel ■	Sample Type	Sample #	SOIL SYMBOL	DCPT/SPT Blows/30cm	SOIL DESCRIPTION	Depth (m)
778		★ ◆ ■ (Plotted at approx. 10% Fines, 15% Sand, 75% Gravel)	Hand	22	GW		ORGANICS WELL-GRADED GRAVEL with SAND -brown, loose, damp -10-15% Cobbles, odd boulder	1
777		★ ◆ ■ (Plotted at approx. 10% Fines, 15% Sand, 75% Gravel)	Hand	23	GP		POORLY GRADED GRAVEL with SAND grey, loose, damp -10-15% Cobbles, odd boulder	2
776								3
775		★ ◆ ■ (Plotted at approx. 10% Fines, 15% Sand, 75% Gravel)	Hand	24	GP			4
774							END of HOLE -Target depth reached	4

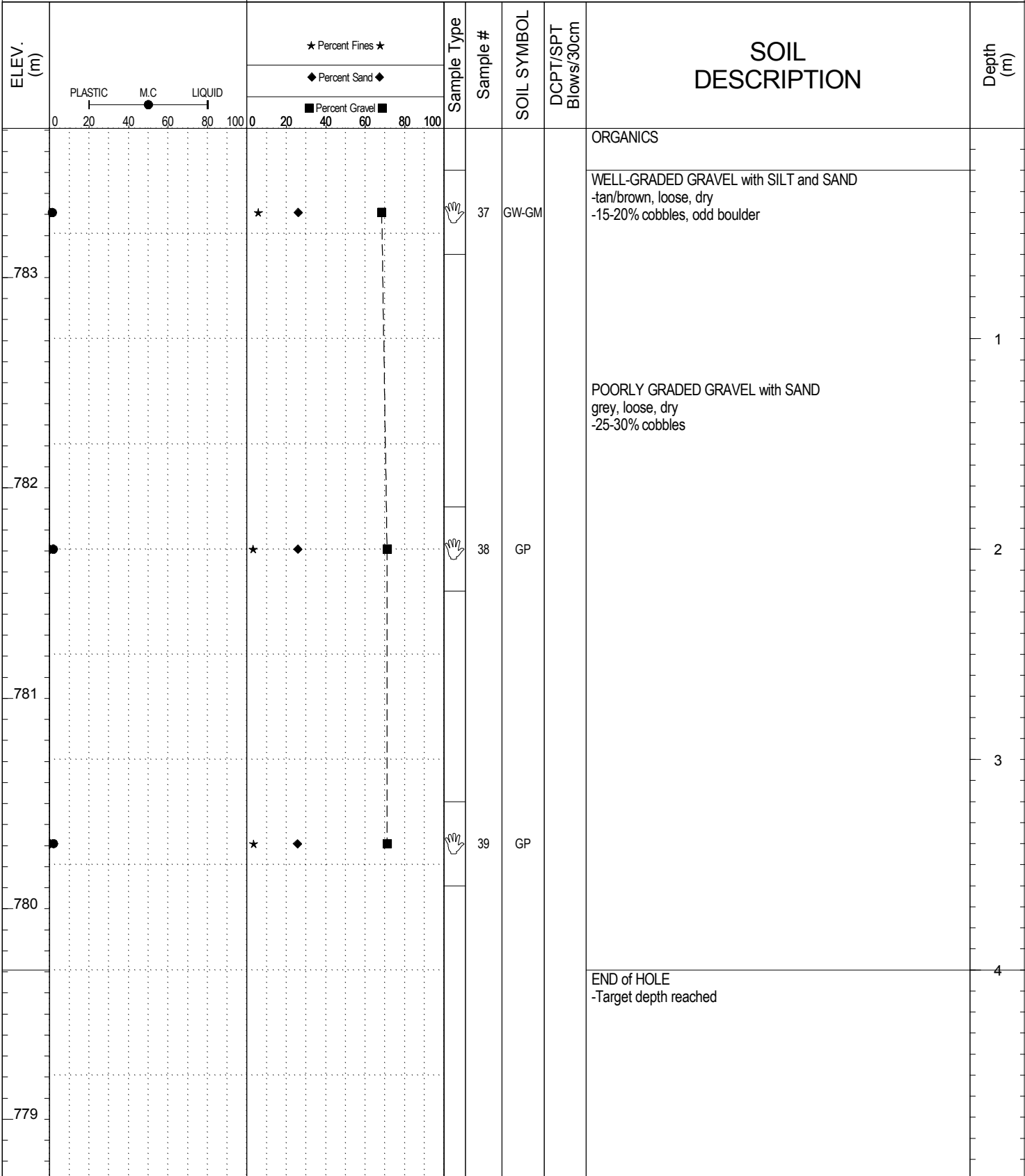
SUBSURFACE EXPLORATION AND TEST REPORT		Alaska Highway #1		SOURCE/TP#: 891-5634				
J.Magun Contracting		Gravel Exploration, km 1062.1 RHS		PROJECT NO: 552-202955- 5501-1				
Hitachi 200 LC		Coordinates: Z9N N6674281m E441860m		ELEVATION: 773.729309m				
SAMPLE TYPE		UNDISTURBED	DCPT	AUGER	BULK	SPT	CORE	
ELEV. (m)	★ Percent Fines ★ ◆ Percent Sand ◆ ■ Percent Gravel ■		Sample Type	Sample #	SOIL SYMBOL	DCPT/SPT Blows/30cm	SOIL DESCRIPTION	Depth (m)
	PLASTIC M.C LIQUID 0 20 40 60 80 100							
773				Hand	25	GP	ORGANICS POORLY GRADED GRAVEL with SAND -brown, loose, damp -5-10% cobbles WELL-GRADED GRAVEL with SAND -grey, loose, damp -10-15% cobbles	1
772				Hand	26	GW		2
771								3
770				Hand	27	GW		4
769							END of HOLE -Target depth reached	

SUBSURFACE EXPLORATION AND TEST REPORT		Alaska Highway #1		SOURCE/TP#: 891-5635					
J.Magun Contracting		Gravel Exploration, km 1062.1 RHS		PROJECT NO: 552-202955- 5501-1					
Hitachi 200 LC		Coordinates: Z9N N6674356m E441866m		ELEVATION: 781.814819m					
SAMPLE TYPE		<input type="checkbox"/> UNDISTURBED	<input type="checkbox"/> DCPT	<input type="checkbox"/> AUGER	<input type="checkbox"/> BULK	<input checked="" type="checkbox"/> SPT	<input type="checkbox"/> CORE		
ELEV. (m)	PLASTIC M.C LIQUID 0 20 40 60 80 100			Sample Type	Sample #	SOIL SYMBOL	DCPT/SPT Blows/30cm	SOIL DESCRIPTION	Depth (m)
	★ Percent Fines ★	◆ Percent Sand ◆	■ Percent Gravel ■						
781				Hand	28	GW		ORGANICS WELL-GRADED GRAVEL with SAND -brown/grey, loose, dry -15-20% cobbles	1
780				Hand	29	GW		-grey -odd boulder	2
779								POORLY GRADED GRAVEL with SAND -grey, loose, dry -20-25% cobbles, odd boulder	3
778				Hand	30	GP			4
777								END of HOLE -Target depth reached	

SUBSURFACE EXPLORATION AND TEST REPORT		Alaska Highway #1		SOURCE/TP#: 891-5636				
J.Magun Contracting		Gravel Exploration, km 1062.1 RHS		PROJECT NO: 552-202955- 5501-1				
Hitachi 200 LC		Coordinates: Z9N N6674348m E441940m		ELEVATION: 781.79895m				
SAMPLE TYPE		<input type="checkbox"/> UNDISTURBED <input checked="" type="checkbox"/> DCPT		<input checked="" type="checkbox"/> AUGER <input type="checkbox"/> BULK <input checked="" type="checkbox"/> SPT <input type="checkbox"/> CORE				
ELEV. (m)	PLASTIC M.C LIQUID 0 20 40 60 80 100	★ Percent Fines ★ ◆ Percent Sand ◆ ■ Percent Gravel ■	Sample Type	Sample #	SOIL SYMBOL	DCPT/SPT Blows/30cm	SOIL DESCRIPTION	Depth (m)
781			Hand	31	GP		ORGANICS	1
781			Hand	32	GP		POORLY GRADED GRAVEL with SAND -brown, loose, damp -15-20% cobbles	1
780			Hand	32	GP		POORLY GRADED GRAVEL -grey, loose, damp -15-20% cobbles, odd boulder	2
779							POORLY GRADED GRAVEL with SAND -grey, loose, damp -15-20% cobbles, odd boulder	3
778			Hand	33	GP		POORLY GRADED GRAVEL with SAND -grey, loose, damp -15-20% cobbles, odd boulder	3
777							END of HOLE -Target depth reached	4

SUBSURFACE EXPLORATION AND TEST REPORT		Alaska Highway #1		SOURCE/TP#: 891-5637						
J.Magun Contracting		Gravel Exploration, km 1062.1 RHS		PROJECT NO: 552-202955- 5501-1						
Hitachi 200 LC		Coordinates: Z9N N6674341m E442017m		ELEVATION: 776.289673m						
SAMPLE TYPE		<input type="checkbox"/> UNDISTURBED <input checked="" type="checkbox"/> DCPT <input type="checkbox"/> AUGER <input type="checkbox"/> BULK <input checked="" type="checkbox"/> SPT <input type="checkbox"/> CORE								
ELEV. (m)	PLASTIC M.C LIQUID 0 20 40 60 80 100		★ Percent Fines ★ ◆ Percent Sand ◆ ■ Percent Gravel ■		Sample Type	Sample #	SOIL SYMBOL	DCPT/SPT Blows/30cm	SOIL DESCRIPTION	Depth (m)
776					Hand	34	GP		ORGANICS	
									POORLY GRADED GRAVEL with SAND -brown, loose, damp	
775									WELL-GRADED GRAVEL with SAND -grey, loose, damp -15-20% cobbles and boulders	1
					Hand	35	GW			
774									-Massive boulders	2
773					Hand	36	GP		POORLY GRADED GRAVEL with SAND -grey, loose, damp -15-20% cobbles and boulders	3
772									END of HOLE -Target depth reached	4

SAMPLE TYPE UNDISTURBED DCPT AUGER BULK SPT CORE



SUBSURFACE EXPLORATION AND TEST REPORT		Alaska Highway #1		SOURCE/TP#: 891-5639				
J.Magun Contracting		Gravel Exploration, km 1062.1 RHS		PROJECT NO: 552-202955- 5501-1				
Hitachi 200 LC		Coordinates: Z9N N6674483m E441843m		ELEVATION: 785.577454m				
SAMPLE TYPE		<input type="checkbox"/> UNDISTURBED <input checked="" type="checkbox"/> DCPT		<input checked="" type="checkbox"/> AUGER <input type="checkbox"/> BULK <input checked="" type="checkbox"/> SPT <input type="checkbox"/> CORE				
ELEV. (m)	PLASTIC M.C LIQUID 0 20 40 60 80 100	★ Percent Fines ★ ◆ Percent Sand ◆ ■ Percent Gravel ■	Sample Type	Sample #	SOIL SYMBOL	DCPT/SPT Blows/30cm	SOIL DESCRIPTION	Depth (m)
785		★ 10 ◆ 45 ■ 45	Hand	40	GP		ORGANICS POORLY GRADED GRAVEL with SAND grey/brown, loose, damp -10-15% cobbles	1
784		★ 10 ◆ 45 ■ 45	Hand	41	GP		-grey -20-25% cobbles	2
783		★ 10 ◆ 45 ■ 45	Hand	42	GP		-Lots of large boulders	3
782		★ 10 ◆ 45 ■ 45	Hand	42	GP			4
781							END of HOLE -Target depth reached	

SUBSURFACE EXPLORATION AND TEST REPORT		Alaska Highway #1		SOURCE/TP#: 891-5640						
J.Magun Contracting		Gravel Exploration, km 1062.1 RHS		PROJECT NO: 552-202955- 5501-1						
Hitachi 200 LC		Coordinates: Z9N N6674520m E441907m		ELEVATION: 784.729248m						
SAMPLE TYPE		UNDISTURBED		DCPT						
		AUGER		BULK						
		SPT		CORE						
ELEV. (m)	PLASTIC M.C LIQUID 0 20 40 60 80 100			Sample Type	Sample #	SOIL SYMBOL	DCPT/SPT Blows/30cm	SOIL DESCRIPTION	Depth (m)	
	★ Percent Fines ★	◆ Percent Sand ◆	■ Percent Gravel ■							
784				★	◆	■		GP	ORGANICS POORLY GRADED GRAVEL with SAND -brown, loose, damp -15-25% cobbles, lots of boulders	1
783				★	◆	■		GP	-grey -25-35% cobbles	2
782										3
781				★	◆	■		GP		4
780									END of HOLE -Target depth reached	

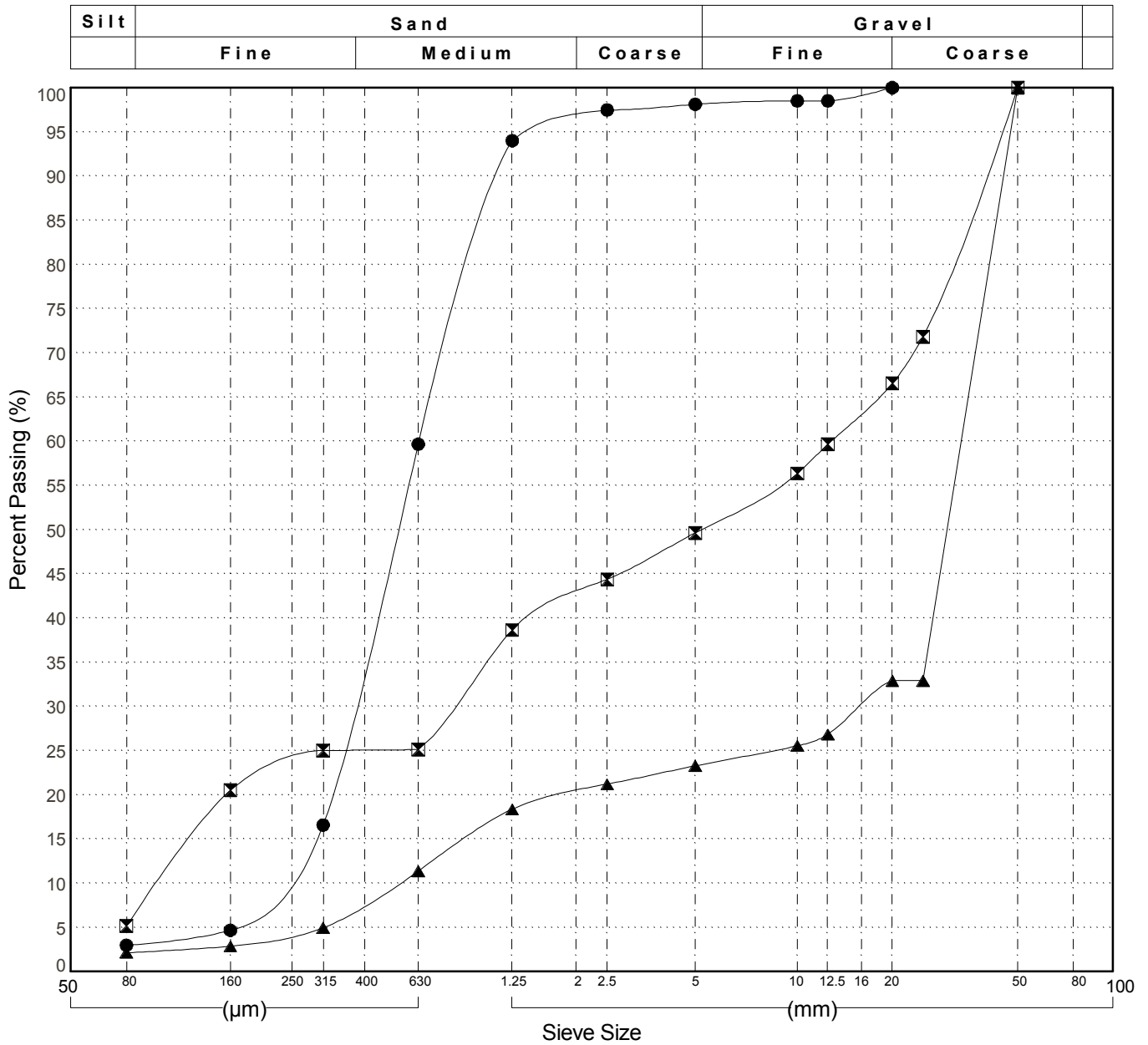


GRAIN SIZE ANALYSIS	Gravel Exploration	SOURCE/TP#: 891-5626
J.Magun Contracting	km 1062.1 RHS	PROJECT NO: 552-202955- 5501-1
Hitachi 200 LC	Coordinates:Z9N N6674119m E441994m	ELEVATION: 776.746826m

Master Revised June 2017

Field #	Lab #	Depth	Classification	%H2O	LL	PL	PI	Cc	Cu	D10
● 01	2016-091	0.4 to 0.8	POORLY GRADED SAND(SP)	3.0	NP	NP	NP	1.1	2.9	0.217
☒ 02	2016-092	1.2 to 1.8	POORLY GRADED GRAVEL with SILT and SAND(GP-GM)	4.0	NP	NP	NP	0.5	134.5	0.095
▲ 03	2016-093	3.0 to 3.4	POORLY GRADED GRAVEL with SAND(GP)	2.1	NP	NP	NP	14.2	60.8	0.544

Field #	Lab #	% PASSING	100.0	80.0	50.0	25.0	20.0	12.5	10.0	5.0	2.5	1.25	0.630	0.315	0.160	0.080	%Breakdown			
			Gravel	Sand	Silt	Clay														
●	01	2016-091	100.0	100.0	100.0	100.0	100.0	98.5	98.5	98.1	97.5	94.0	59.7	16.6	4.7	3.0	1.9	95.1	3.0	
☒	02	2016-092	100.0	100.0	100.0	71.8	66.6	59.6	56.4	49.6	44.4	38.6	25.1	25.0	20.5	5.2	50.4	44.5	5.2	
▲	03	2016-093	100.0	100.0	100.0	32.9	32.9	26.8	25.5	23.3	21.2	18.4	11.4	5.0	2.9	2.1	76.7	21.1	2.1	



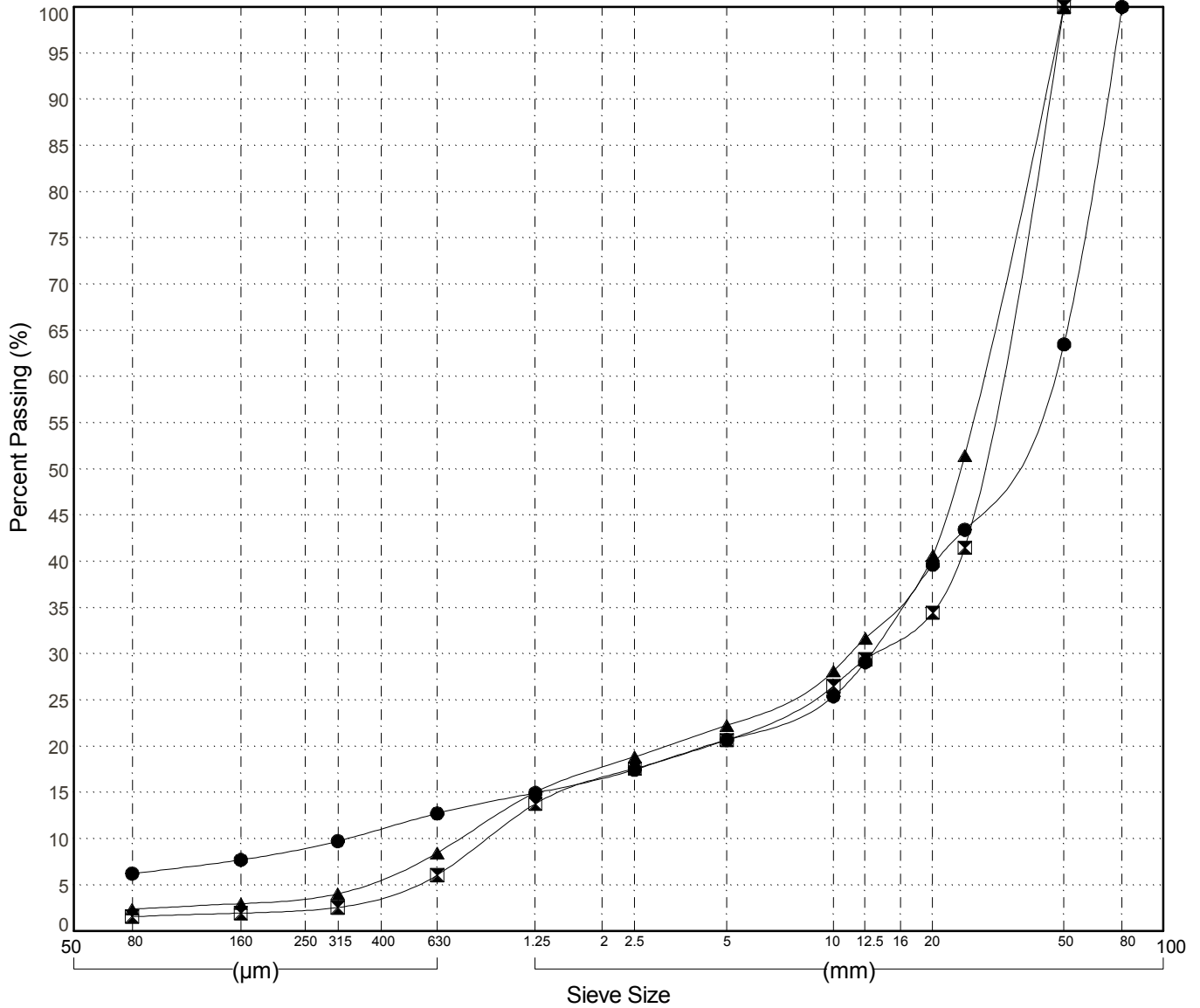
GRAIN SIZE ANALYSIS	Gravel Exploration	SOURCE/TP#: 891-5627
J.Magun Contracting	km 1062.1 RHS	PROJECT NO: 552-202955- 5501-1
Hitachi 200 LC	Coordinates:Z9N N6674125m E441919m	ELEVATION: 784.330261m

Master Revised June 2017

Field #	Lab #	Depth	Classification	%H2O	LL	PL	PI	Cc	Cu	D10
● 04	2016-094	0.3 to 0.6	POORLY GRADED GRAVEL with SILT(GP-GM)	1.2	NP	NP	NP	11.4	132.8	0.334
☒ 05	2016-095	1.6 to 2.0	POORLY GRADED GRAVEL with SAND(GP)	1.1	NP	NP	NP	6.3	34.8	0.893
▲	2016-096	3.0 to 3.6	POORLY GRADED GRAVEL with SAND(GP)	1.2	NP	NP	NP	6.0	38.2	0.739

Field #	Lab #	% PASSING														% Breakdown				
			100.0	80.0	50.0	25.0	20.0	12.5	10.0	5.0	2.5	1.25	0.630	0.315	0.160	0.080	Gravel	Sand	Silt	Clay
●	04	2016-094	100.0	100.0	63.5	43.4	39.7	29.1	25.4	20.7	17.5	15.0	12.8	9.7	7.7	6.2	79.3	14.5	6.2	
☒	05	2016-095	100.0	100.0	100.0	41.5	34.5	29.4	26.5	20.7	17.6	13.8	6.1	2.6	2.0	1.6	79.3	19.1	1.6	
▲		2016-096	100.0	100.0	100.0	51.5	40.7	31.7	28.1	22.3	18.9	15.0	8.5	4.0	3.0	2.4	77.7	19.9	2.4	

Silt	Sand			Gravel	
	Fine	Medium	Coarse	Fine	Coarse



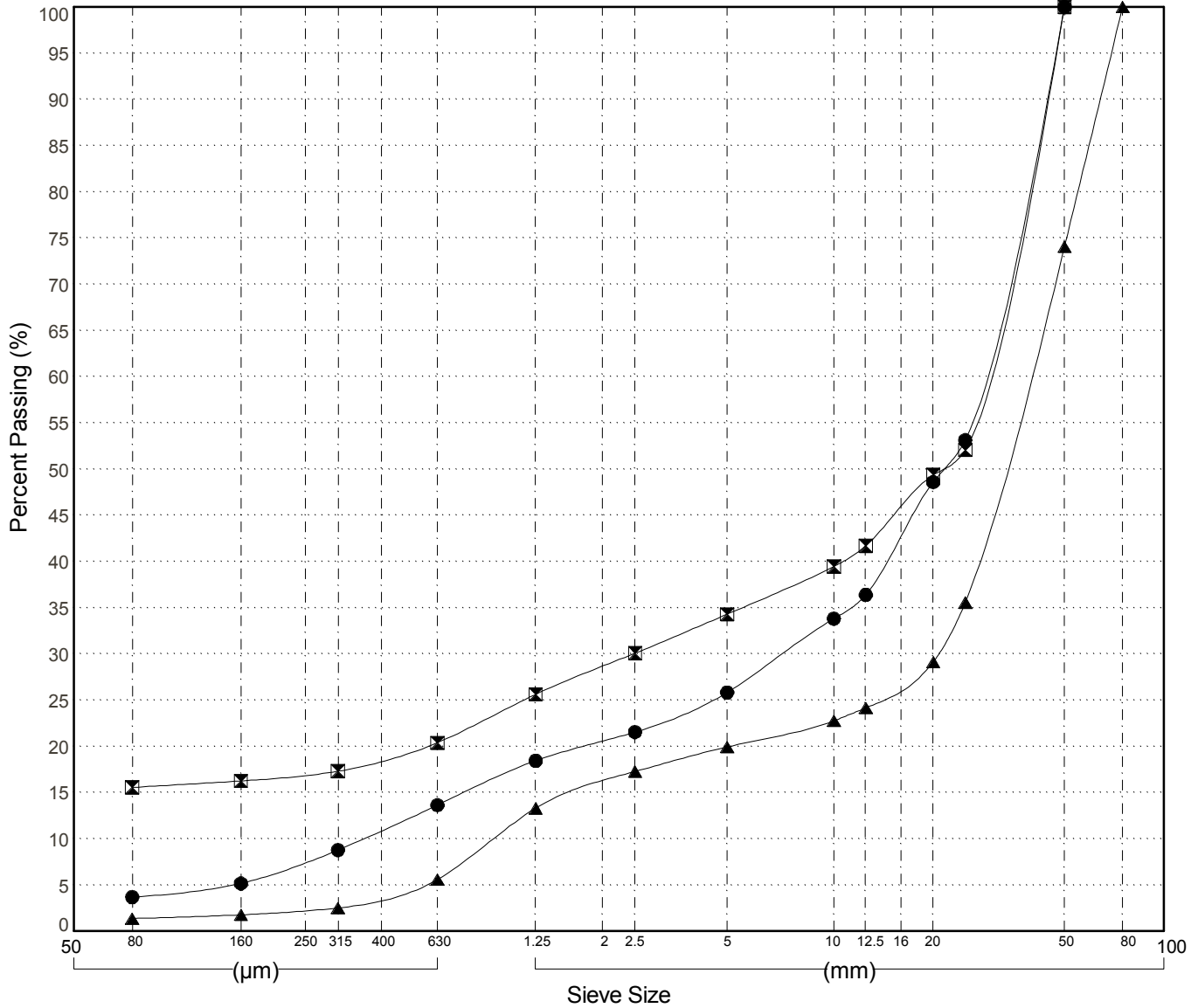
GRAIN SIZE ANALYSIS	Gravel Exploration	SOURCE/TP#: 891-5628
J.Magun Contracting	km 1062.1 RHS	PROJECT NO: 552-202955- 5501-1
Hitachi 200 LC	Coordinates:Z9N N6674133m E441844m	ELEVATION: 784.573364m

Master Revised June 2017

Field #	Lab #	Depth	Classification	%H2O	LL	PL	PI	Cc	Cu	D10
● 07	2016-097	0.2 to 0.6	POORLY GRADED GRAVEL with SAND(GP)	1.1	NP	NP	NP	4.7	73.9	0.375
☒ 08	2016-098	1.6 to 2.0	SILTY GRAVEL with SAND(GM)	1.5	NP	NP	NP			
▲ 09	2016-099	3.0 to 3.4	POORLY GRADED GRAVEL with SAND(GP)	1.2	NP	NP	NP	11.7	41.7	0.932

Field #	Lab #	% PASSING														% Breakdown				
			100.0	80.0	50.0	25.0	20.0	12.5	10.0	5.0	2.5	1.25	0.630	0.315	0.160	0.080	Gravel	Sand	Silt	Clay
●	07	2016-097	100.0	100.0	100.0	53.1	48.6	36.4	33.8	25.8	21.5	18.4	13.7	8.8	5.2	3.7	74.2	22.1	3.7	
☒	08	2016-098	100.0	100.0	100.0	52.1	49.4	41.7	39.5	34.3	30.1	25.6	20.4	17.3	15.6	65.7	18.7	15.6		
▲	09	2016-099	100.0	100.0	74.0	35.6	29.1	24.2	22.8	19.9	17.3	13.3	5.6	2.5	1.8	1.4	80.1	18.6	1.4	

Silt	Sand			Gravel	
	Fine	Medium	Coarse	Fine	Coarse



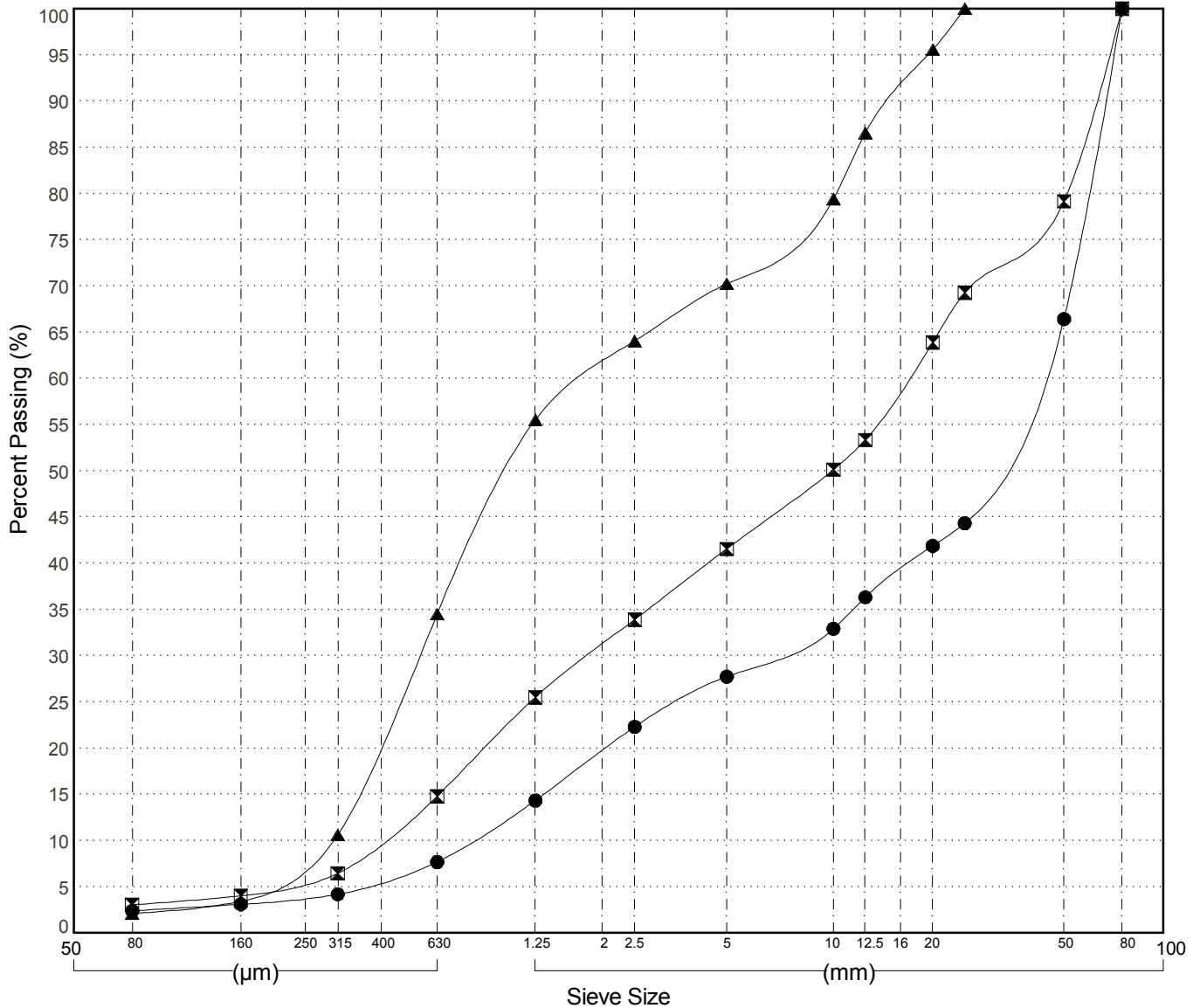
GRAIN SIZE ANALYSIS	Gravel Exploration	SOURCE/TP#: 891-5629
J.Magun Contracting	km 1062.1 RHS	PROJECT NO: 552-202955- 5501-1
Hitachi 200 LC	Coordinates:Z9N N6674207m E441855m	ELEVATION: 777.172241m

Master Revised June 2017

Field #	Lab #	Depth	Classification	%H2O	LL	PL	PI	Cc	Cu	D10
● 10	2016-100	0.2 to 0.6	WELL-GRADED GRAVEL with SAND(GW)	1.0	NP	NP	NP	1.3	51.1	0.800
☒ 11	2016-101	1.4 to 1.8	POORLY GRADED GRAVEL with SAND(GP)	2.1	NP	NP	NP	0.5	39.8	0.423
▲ 12	2016-102	3.2 to 3.6	POORLY GRADED SAND with GRAVEL(SP)	2.9	NP	NP	NP	0.6	6.1	0.297

Field #	Lab #	% PASSING	Sieve Size (mm)													% Breakdown			
			100.0	80.0	50.0	25.0	20.0	12.5	10.0	5.0	2.5	1.25	0.630	0.315	0.160	0.080	Gravel	Sand	Clay
●	10	2016-100	100.0	100.0	66.4	44.3	41.9	36.3	32.9	27.7	22.3	14.3	7.7	4.2	3.1	2.4	72.3	25.3	2.4
☒	11	2016-101	100.0	100.0	79.2	69.3	63.9	53.3	50.1	41.6	33.9	25.5	14.8	6.5	4.0	3.0	58.4	38.5	3.0
▲	12	2016-102	100.0	100.0	100.0	100.0	95.6	86.5	79.4	70.2	64.0	55.5	34.5	10.6	3.4	2.1	29.8	68.1	2.1

Silt	Sand			Gravel	
	Fine	Medium	Coarse	Fine	Coarse

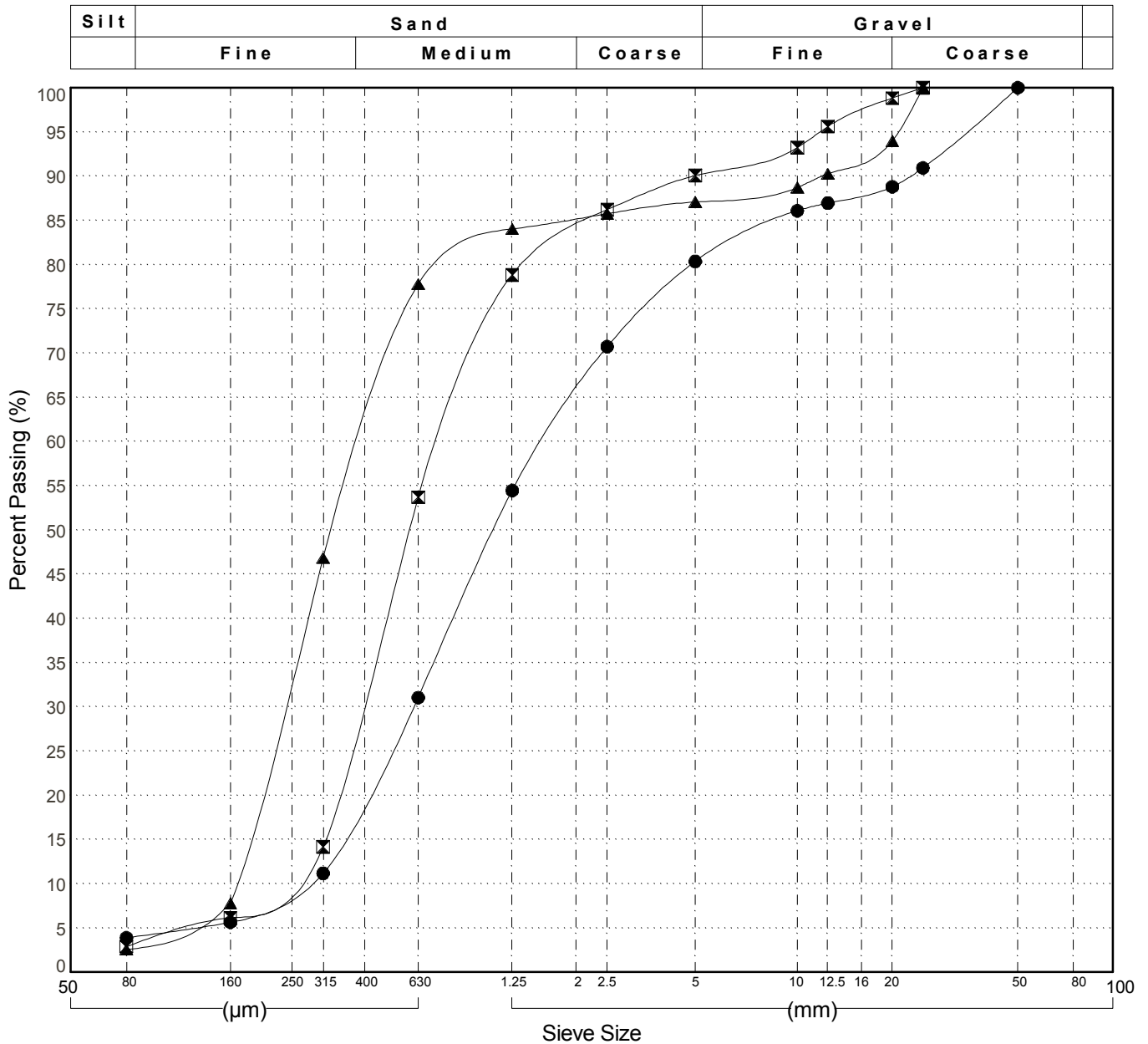


GRAIN SIZE ANALYSIS	Gravel Exploration	SOURCE/TP#: 891-5630
J.Magun Contracting	km 1062.1 RHS	PROJECT NO: 552-202955- 5501-1
Hitachi 200 LC	Coordinates:Z9N N6674200m E441928m	ELEVATION: 780.631042m

Master Revised June 2017

Field #	Lab #	Depth	Classification	%H2O	LL	PL	PI	Cc	Cu	D10
● 13	2016-103	0.2 to 0.6	POORLY GRADED SAND with GRAVEL(SP)	2.3	NP	NP	NP	0.9	5.8	0.272
☒ 14	2016-104	1.2 to 1.6	POORLY GRADED SAND(SP)	2.8	NP	NP	NP	1.0	3.4	0.222
▲ 15	2016-105	3.2 to 3.6	POORLY GRADED SAND(SP)	6.2	NP	NP	NP	0.8	2.5	0.166

Field #	Lab #	% PASSING	Sieve Size (mm)													% Breakdown				
			100.0	80.0	50.0	25.0	20.0	12.5	10.0	5.0	2.5	1.25	0.630	0.315	0.160	0.080	Gravel	Sand	Silt	Clay
●	13	2016-103	100.0	100.0	100.0	90.9	88.8	87.0	86.1	80.4	70.7	54.5	31.0	11.2	5.6	3.9	19.6	76.5	3.9	
☒	14	2016-104	100.0	100.0	100.0	100.0	98.8	95.6	93.2	90.1	86.2	78.8	53.7	14.2	6.1	2.9	9.9	87.2	2.9	
▲	15	2016-105	100.0	100.0	100.0	100.0	94.0	90.3	88.7	87.1	85.8	84.0	77.8	46.8	7.8	2.6	12.9	84.5	2.6	

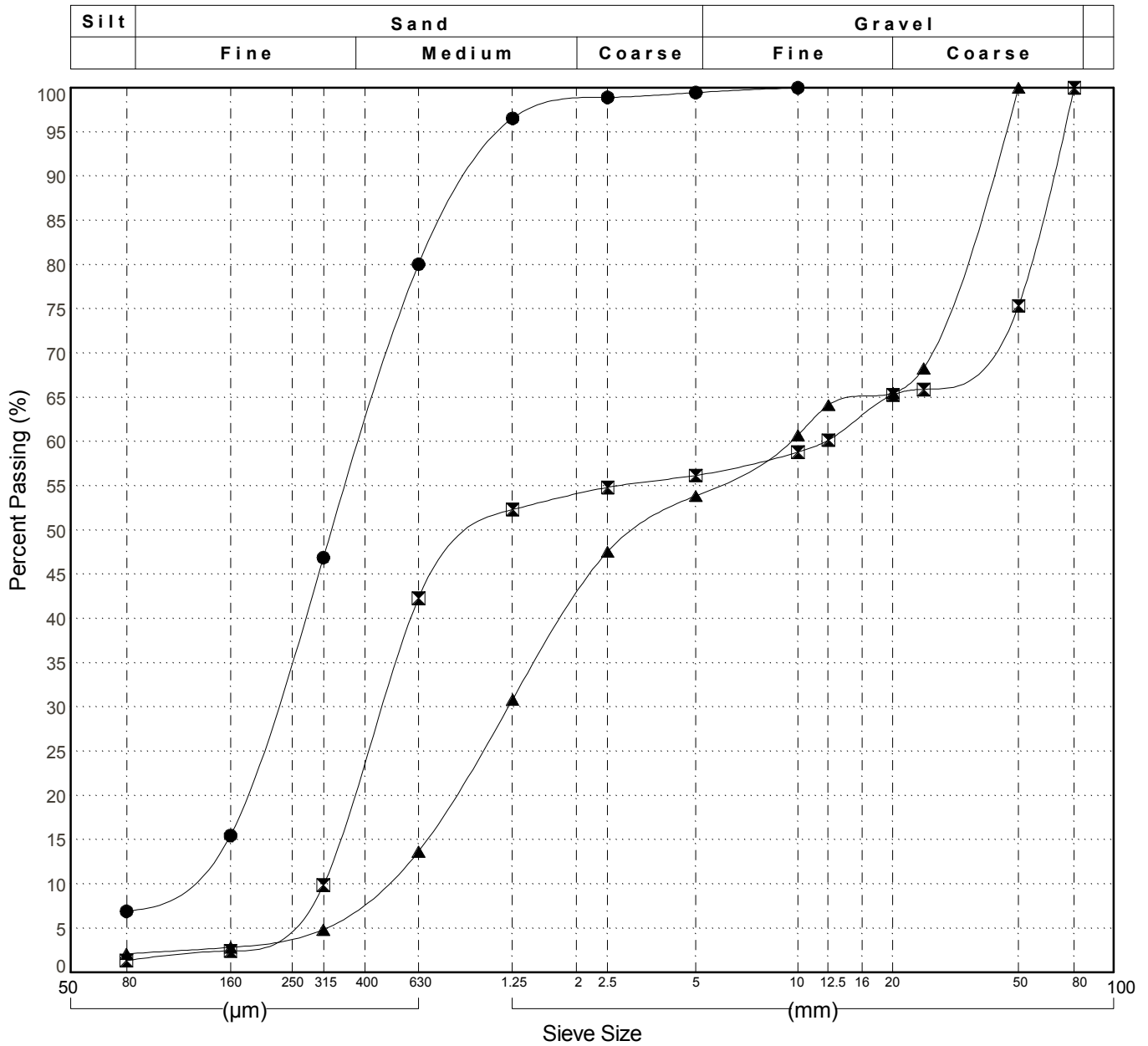


GRAIN SIZE ANALYSIS	Gravel Exploration	SOURCE/TP#: 891-5631
J.Magun Contracting	km 1062.1 RHS	PROJECT NO: 552-202955- 5501-1
Hitachi 200 LC	Coordinates:Z9N N6674193m E442002m	ELEVATION: 781.341797m

Master Revised June 2017

Field #	Lab #	Depth	Classification	%H2O	LL	PL	PI	Cc	Cu	D10
● 16	2016-106	0.2 to 0.6	POORLY GRADED SAND with SILT(SP-SM)	4.4	NP	NP	NP	1.2	4.2	0.098
☒ 17	2016-107	1.6 to 2.0	POORLY GRADED SAND with GRAVEL(SP)	3.2	NP	NP	NP	0.1	38.5	0.316
▲ 18	2016-108	3.2 to 3.6	POORLY GRADED SAND with GRAVEL(SP)	2.6	NP	NP	NP	0.3	19.6	0.472

Field #	Lab #	% PASSING	Sieve Size (mm)													% Breakdown				
			100.0	80.0	50.0	25.0	20.0	12.5	10.0	5.0	2.5	1.25	0.630	0.315	0.160	0.080	Gravel	Sand	Silt	Clay
●	16	2016-106	100.0	100.0	100.0	100.0	100.0	100.0	100.0	99.4	98.9	96.5	80.1	46.9	15.5	6.9	0.6	92.5	6.9	6.9
☒	17	2016-107	100.0	100.0	75.4	65.9	65.3	60.2	58.8	56.2	54.8	52.3	42.3	9.9	2.4	1.4	43.8	54.8	1.4	1.4
▲	18	2016-108	100.0	100.0	100.0	68.3	65.5	64.1	60.7	53.9	47.6	30.8	13.7	4.8	2.8	2.1	46.1	51.7	2.1	2.1



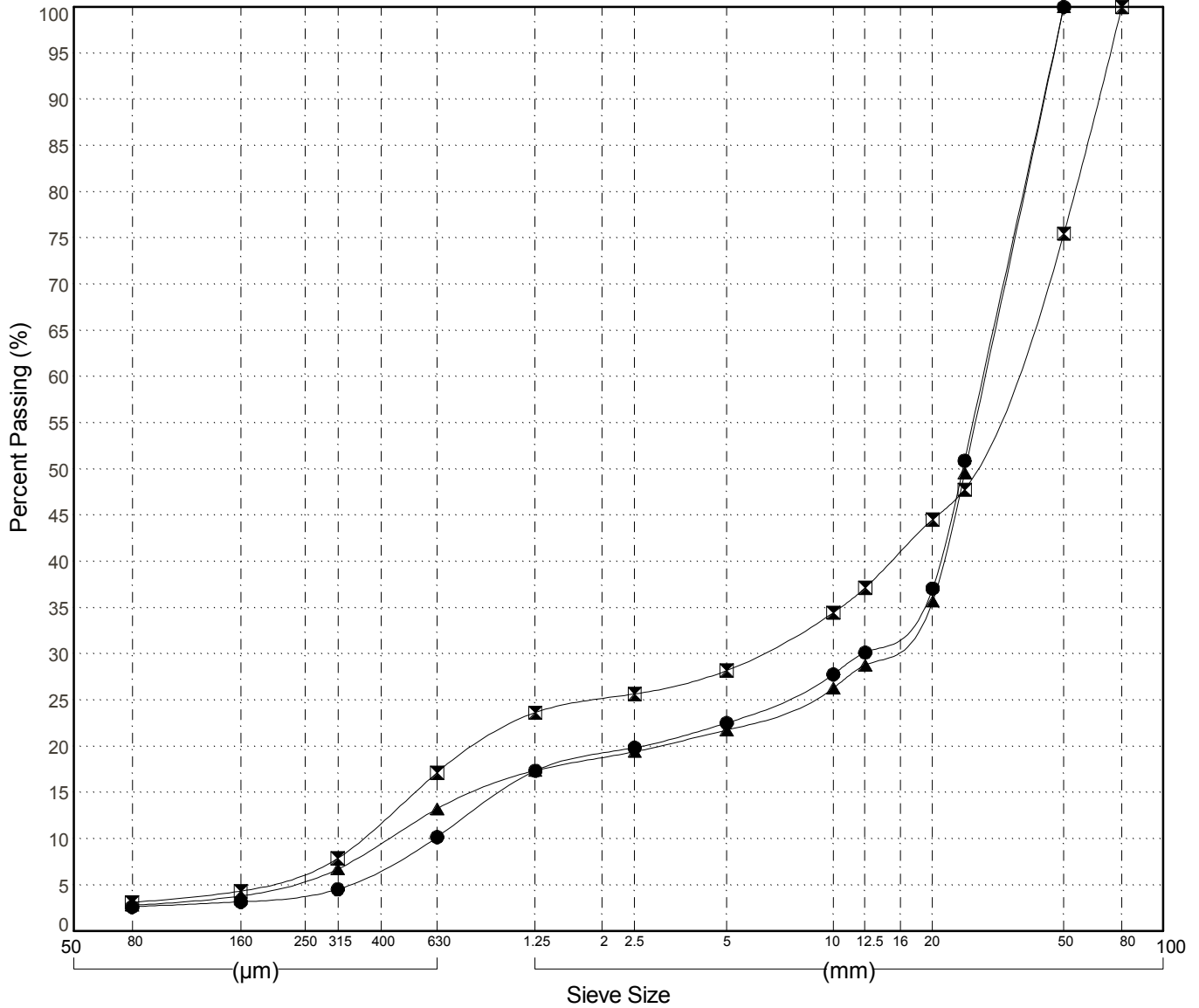
GRAIN SIZE ANALYSIS	Gravel Exploration	SOURCE/TP#: 891-5632
J.Magun Contracting	km 1062.1 RHS	PROJECT NO: 552-202955- 5501-1
Hitachi 200 LC	Coordinates:Z9N N6674266m E442007m	ELEVATION: 778.665161m

Master Revised June 2017

Field #	Lab #	Depth	Classification	%H2O	LL	PL	PI	Cc	Cu	D10
● 19	2016-109	0.2 to 0.6	POORLY GRADED GRAVEL with SAND(GP)	1.3	NP	NP	NP	8.7	46.2	0.615
☒ 20	2016-110	1.6 to 2.0	WELL-GRADED GRAVEL with SAND(GW)	1.7	NP	NP	NP	2.8	92.1	0.369
▲ 21	2016-111	3.6 to 4.0	POORLY GRADED GRAVEL with SAND(GP)	1.6	NP	NP	NP	14.3	64.6	0.446

Field #	Lab #	% PASSING	Sieve Size (mm)													% Breakdown				
			100.0	80.0	50.0	25.0	20.0	12.5	10.0	5.0	2.5	1.25	0.630	0.315	0.160	0.080	Gravel	Sand	Silt	Clay
●	19	2016-109	100.0	100.0	100.0	50.9	37.1	30.2	27.8	22.5	19.9	17.4	10.2	4.5	3.2	2.6	77.5	19.9		2.6
☒	20	2016-110	100.0	100.0	75.5	47.8	44.5	37.2	34.5	28.2	25.7	23.7	17.2	7.9	4.3	3.1	71.8	25.1		3.1
▲	21	2016-111	100.0	100.0	100.0	49.6	35.7	28.8	26.3	21.8	19.4	17.4	13.2	6.7	3.8	2.8	78.2	18.9		2.8

Silt	Sand			Gravel	
	Fine	Medium	Coarse	Fine	Coarse



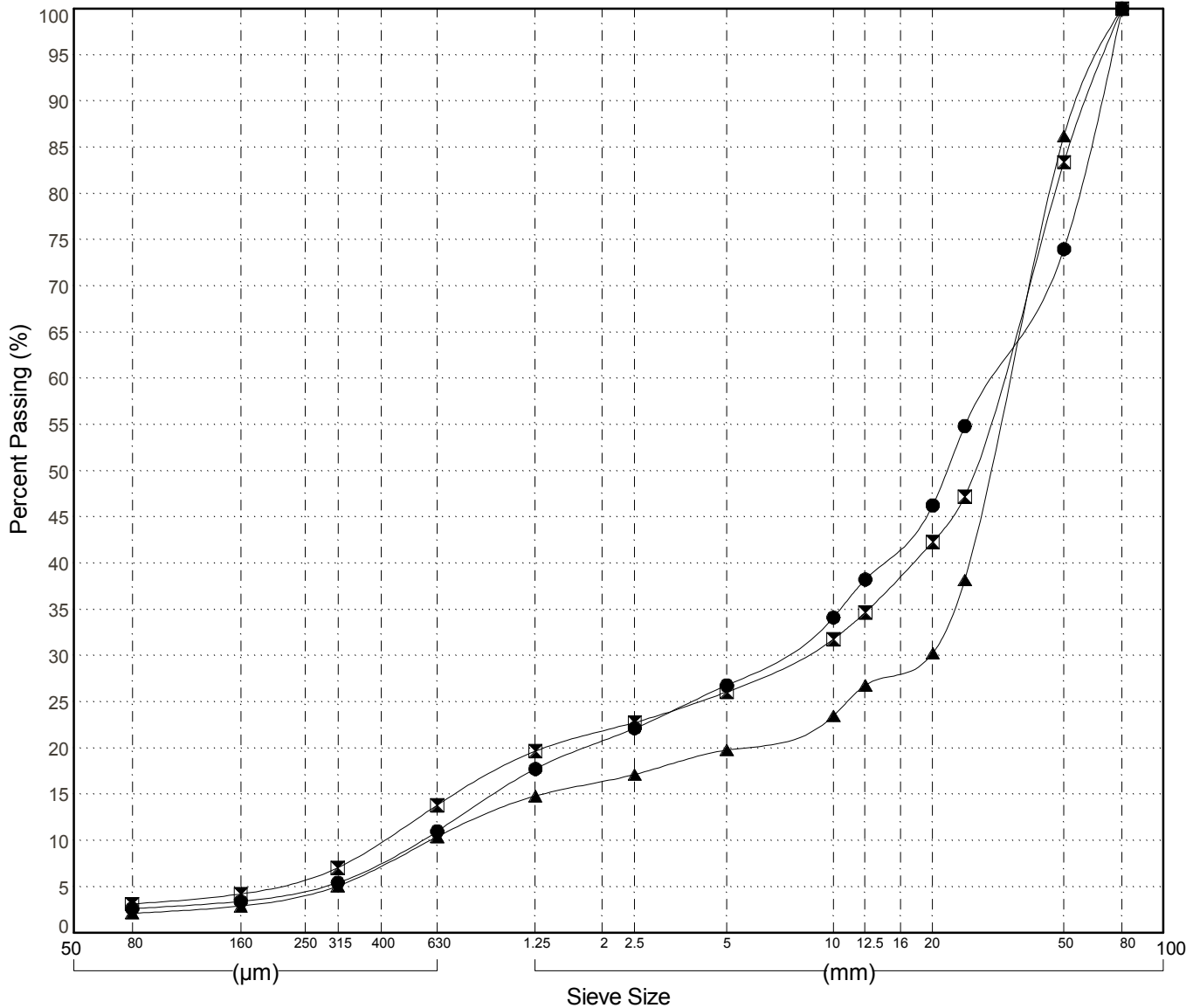
GRAIN SIZE ANALYSIS	Gravel Exploration	SOURCE/TP#: 891-5633
J.Magun Contracting	km 1062.1 RHS	PROJECT NO: 552-202955- 5501-1
Hitachi 200 LC	Coordinates:Z9N N6674274m E441934m	ELEVATION: 778.371826m

Master Revised June 2017

Field #	Lab #	Depth	Classification	%H2O	LL	PL	PI	Cc	Cu	D10
● 22	2016-112	0.2 to 0.6	WELL-GRADED GRAVEL with SAND(GW)	1.1	NP	NP	NP	2.6	54.2	0.556
☒ 23	2016-113	1.6 to 2.0	POORLY GRADED GRAVEL with SAND(GP)	1.8	NP	NP	NP	4.6	75.0	0.426
▲ 24	2016-114	3.4 to 3.8	POORLY GRADED GRAVEL with SAND(GP)	1.3	NP	NP	NP	18.2	57.3	0.598

Field #	Lab #	% PASSING	Gravel													% Breakdown				
			100.0	80.0	50.0	25.0	20.0	12.5	10.0	5.0	2.5	1.25	0.630	0.315	0.160	0.080	Gravel	Sand	Silt	Clay
●	22	2016-112	100.0	100.0	74.0	54.8	46.3	38.3	34.1	26.8	22.1	17.8	11.0	5.4	3.4	2.6	73.2	24.1		2.6
☒	23	2016-113	100.0	100.0	83.4	47.2	42.3	34.7	31.8	26.1	22.8	19.7	13.8	7.1	4.2	3.1	73.9	22.9		3.1
▲	24	2016-114	100.0	100.0	86.2	38.2	30.3	26.8	23.5	19.8	17.1	14.8	10.4	5.1	2.9	2.1	80.2	17.6		2.1

Silt	Sand			Gravel	
	Fine	Medium	Coarse	Fine	Coarse



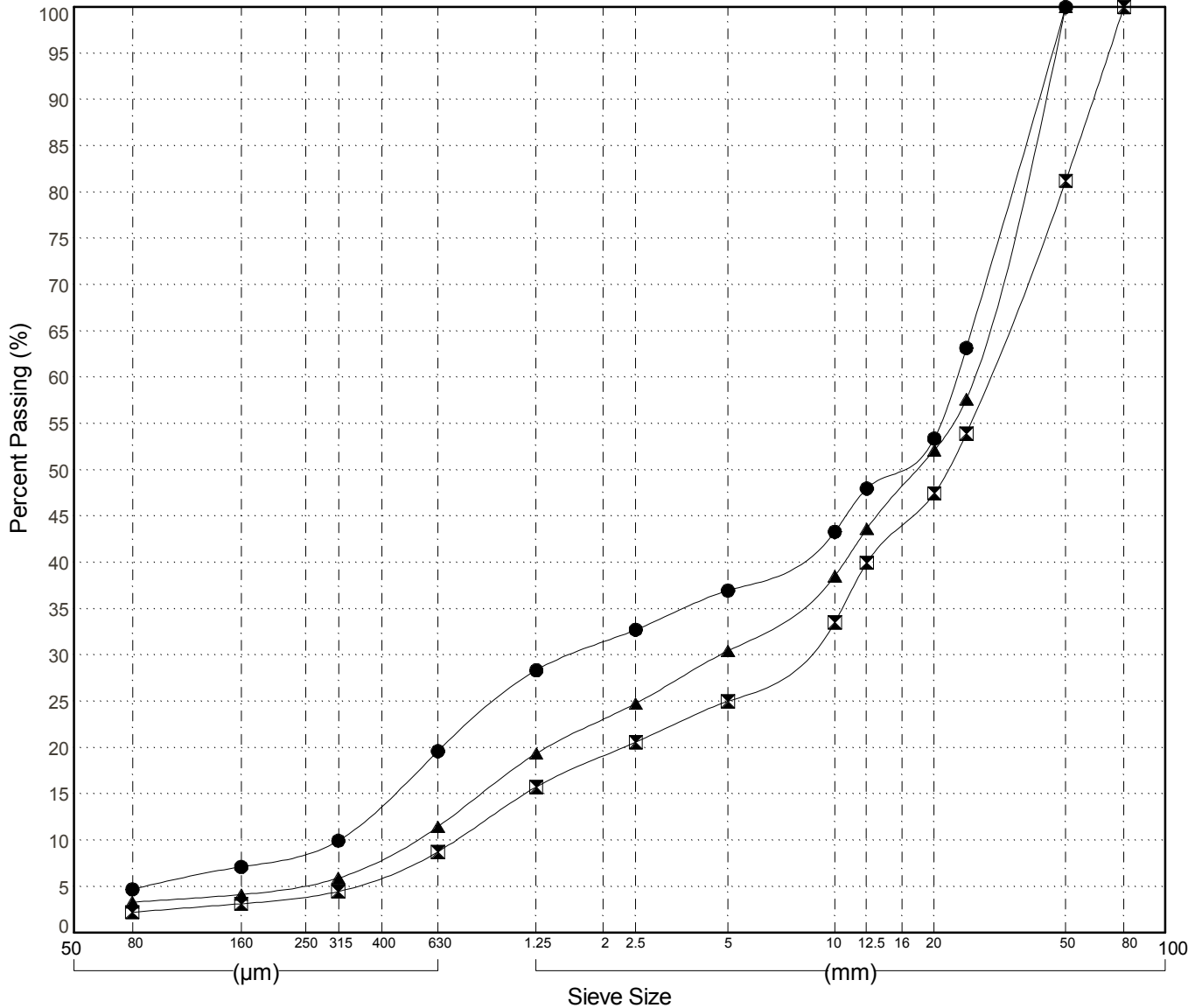
GRAIN SIZE ANALYSIS	Gravel Exploration	SOURCE/TP#: 891-5634
J.Magun Contracting	km 1062.1 RHS	PROJECT NO: 552-202955- 5501-1
Hitachi 200 LC	Coordinates:Z9N N6674281m E441860m	ELEVATION: 773.729309m

Master Revised June 2017

Field #	Lab #	Depth	Classification	%H2O	LL	PL	PI	Cc	Cu	D10
● 25	2016-115	0.2 to 0.6	POORLY GRADED GRAVEL with SAND(GP)	2.6	NP	NP	NP	0.4	73.6	0.316
☒ 26	2016-116	1.6 to 2.0	WELL-GRADED GRAVEL with SAND(GW)	1.6	NP	NP	NP	2.6	41.0	0.712
▲ 27	2016-117	3.4 to 3.8	WELL-GRADED GRAVEL with SAND(GW)	2.0	NP	NP	NP	1.5	49.5	0.525

Field #	Lab #	% PASSING	Sieve Size (mm)													% Breakdown		
			100.0	80.0	50.0	25.0	20.0	12.5	10.0	5.0	2.5	1.25	0.630	0.315	0.160	0.080	Gravel	Sand
● 25	2016-115	100.0	100.0	100.0	63.2	53.4	48.0	43.3	37.0	32.7	28.4	19.6	10.0	7.1	4.7	63.0	32.3	4.7
☒ 26	2016-116	100.0	100.0	81.2	53.9	47.5	40.0	33.5	25.0	20.6	15.8	8.7	4.5	3.1	2.2	75.0	22.8	2.2
▲ 27	2016-117	100.0	100.0	100.0	57.6	52.1	43.6	38.5	30.4	24.8	19.4	11.5	5.9	4.1	3.3	69.6	27.1	3.3

Silt	Sand			Gravel	
	Fine	Medium	Coarse	Fine	Coarse



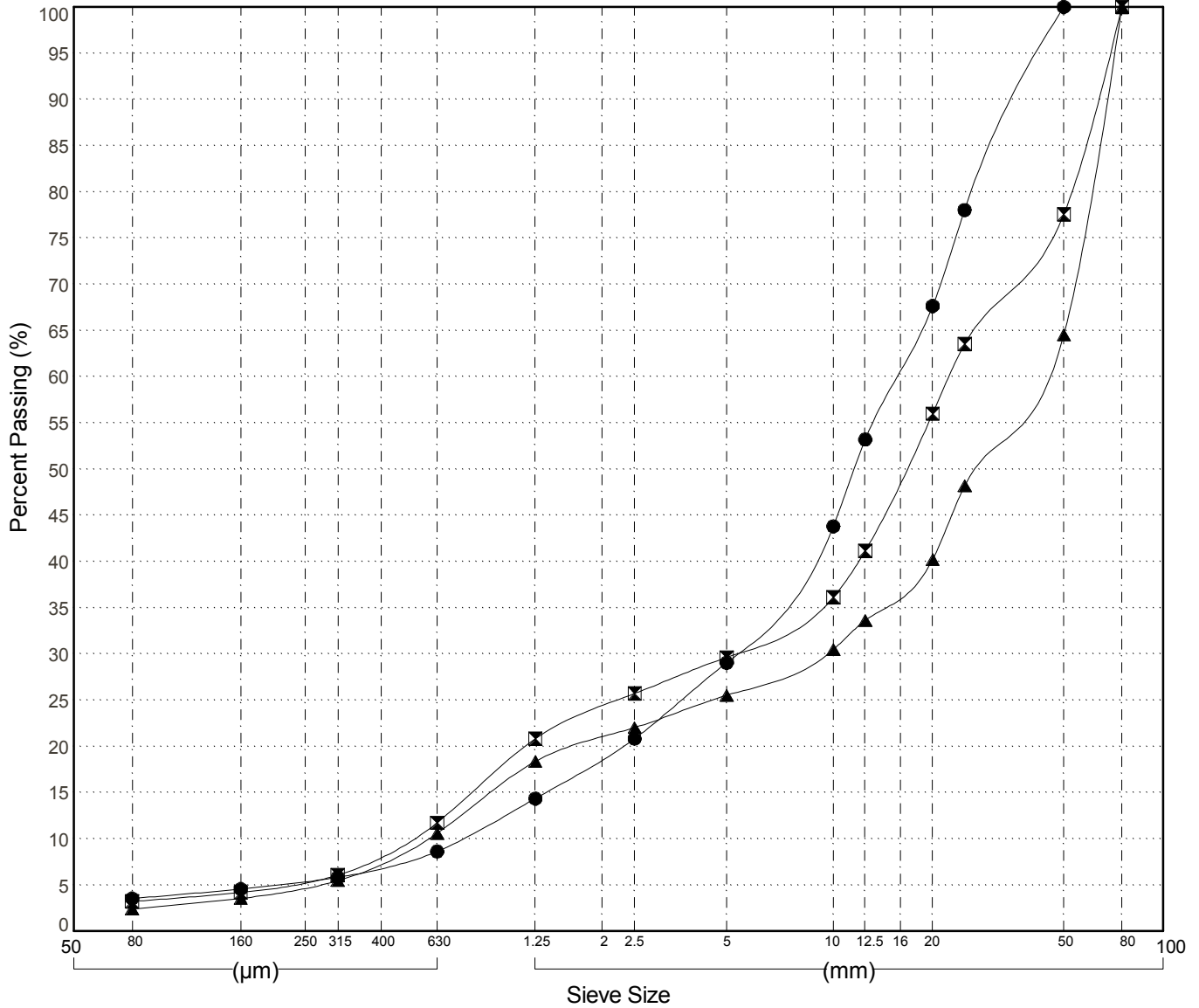
GRAIN SIZE ANALYSIS	Gravel Exploration	SOURCE/TP#: 891-5635
J.Magun Contracting	km 1062.1 RHS	PROJECT NO: 552-202955- 5501-1
Hitachi 200 LC	Coordinates:Z9N N6674356m E441866m	ELEVATION: 781.814819m

Master Revised June 2017

Field #	Lab #	Depth	Classification	%H2O	LL	PL	PI	Cc	Cu	D10
● 28	2016-118	0.2 to 0.6	WELL-GRADED GRAVEL with SAND(GW)	1.4	NP	NP	NP	2.1	21.0	0.742
☒ 29	2016-119	1.6 to 2.0	WELL-GRADED GRAVEL with SAND(GW)	1.4	NP	NP	NP	2.1	44.2	0.510
▲ 30	2016-120	3.4 to 3.8	POORLY GRADED GRAVEL with SAND(GP)	1.6	NP	NP	NP	3.6	70.9	0.582

Field #	Lab #	% PASSING	Sieve Size (mm)													% Breakdown			
			100.0	80.0	50.0	25.0	20.0	12.5	10.0	5.0	2.5	1.25	0.630	0.315	0.160	0.080	Gravel	Sand	Clay
●	28	2016-118	100.0	100.0	100.0	78.0	67.6	53.2	43.8	29.0	20.8	14.4	8.6	5.8	4.6	3.5	71.0	25.5	3.5
☒	29	2016-119	100.0	100.0	77.5	63.5	56.0	41.1	36.1	29.6	25.7	20.8	11.7	6.1	4.2	3.2	70.4	26.4	3.2
▲	30	2016-120	100.0	100.0	64.5	48.2	40.2	33.6	30.5	25.5	22.0	18.4	10.6	5.5	3.6	2.4	74.5	23.1	2.4

Silt	Sand			Gravel	
	Fine	Medium	Coarse	Fine	Coarse



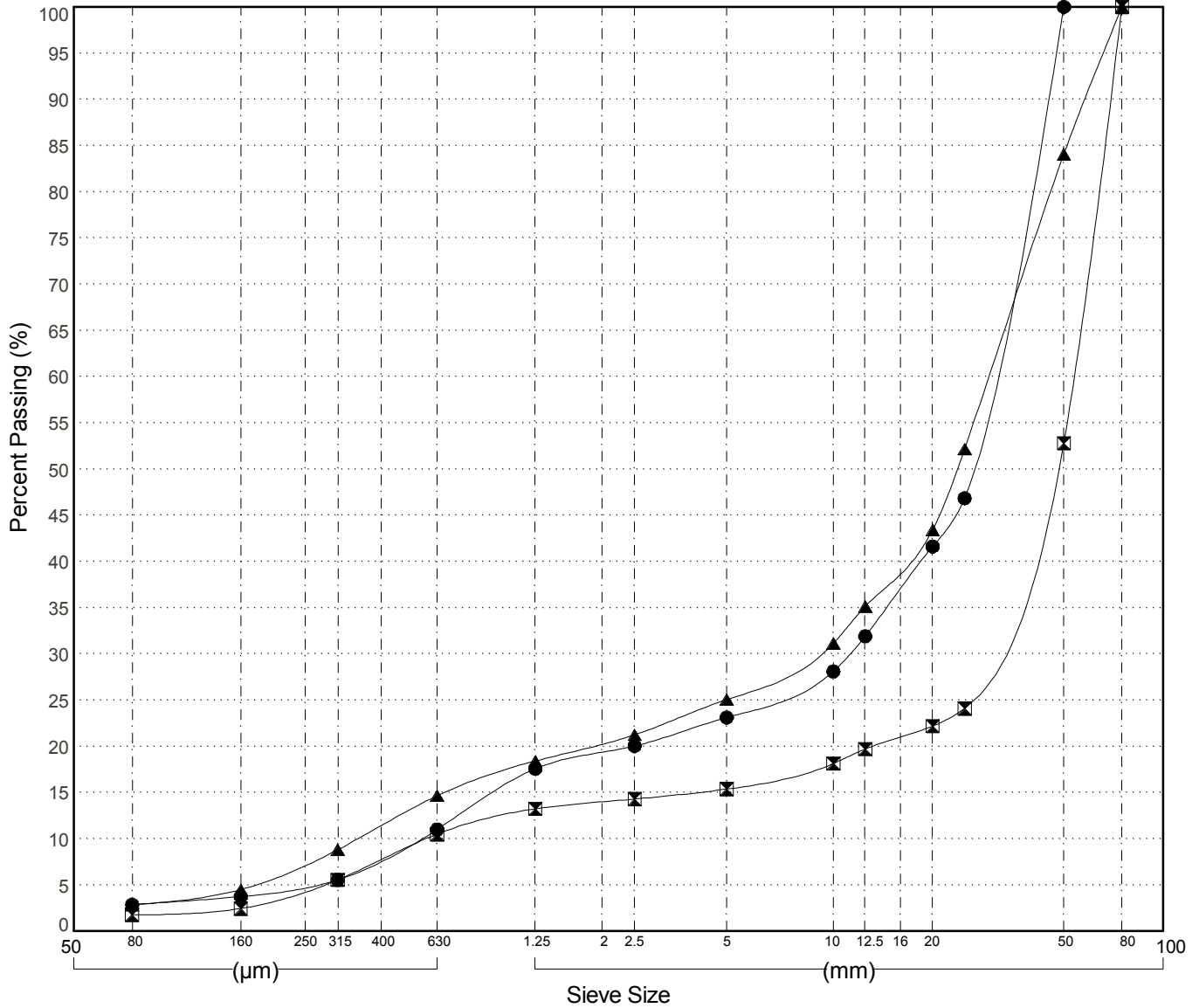
GRAIN SIZE ANALYSIS	Gravel Exploration	SOURCE/TP#: 891-5636
J.Magun Contracting	km 1062.1 RHS	PROJECT NO: 552-202955- 5501-1
Hitachi 200 LC	Coordinates:Z9N N6674348m E441940m	ELEVATION: 781.79895m

Master Revised June 2017

Field #	Lab #	Depth	Classification	%H2O	LL	PL	PI	Cc	Cu	D10
● 31	2016-121	0.2 to 0.6	POORLY GRADED GRAVEL with SAND(GP)	1.3	NP	NP	NP	7.6	53.5	0.554
☒ 32	2016-122	1.4 to 1.8	POORLY GRADED GRAVEL(GP)	1.7	NP	NP	NP	26.6	90.6	0.587
▲ 33	2016-123	3.4 to 3.8	POORLY GRADED GRAVEL with SAND(GP)	1.7	NP	NP	NP	7.0	81.8	0.362

Field #	Lab #	% PASSING	Breakdown																% Breakdown		
			100.0	80.0	50.0	25.0	20.0	12.5	10.0	5.0	2.5	1.25	0.630	0.315	0.160	0.080	Gravel	Sand	Silt	Clay	
●	31	2016-121	100.0	100.0	100.0	46.8	41.6	31.9	28.1	23.1	20.0	17.6	11.0	5.6	3.7	2.9	76.9	20.2		2.9	
☒	32	2016-122	100.0	100.0	52.8	24.1	22.2	19.7	18.1	15.4	14.3	13.2	10.5	5.6	2.5	1.8	84.6	13.6		1.8	
▲	33	2016-123	100.0	100.0	84.1	52.2	43.4	35.1	31.1	25.1	21.2	18.4	14.7	8.8	4.5	2.9	74.9	22.2		2.9	

Silt	Sand			Gravel	
	Fine	Medium	Coarse	Fine	Coarse



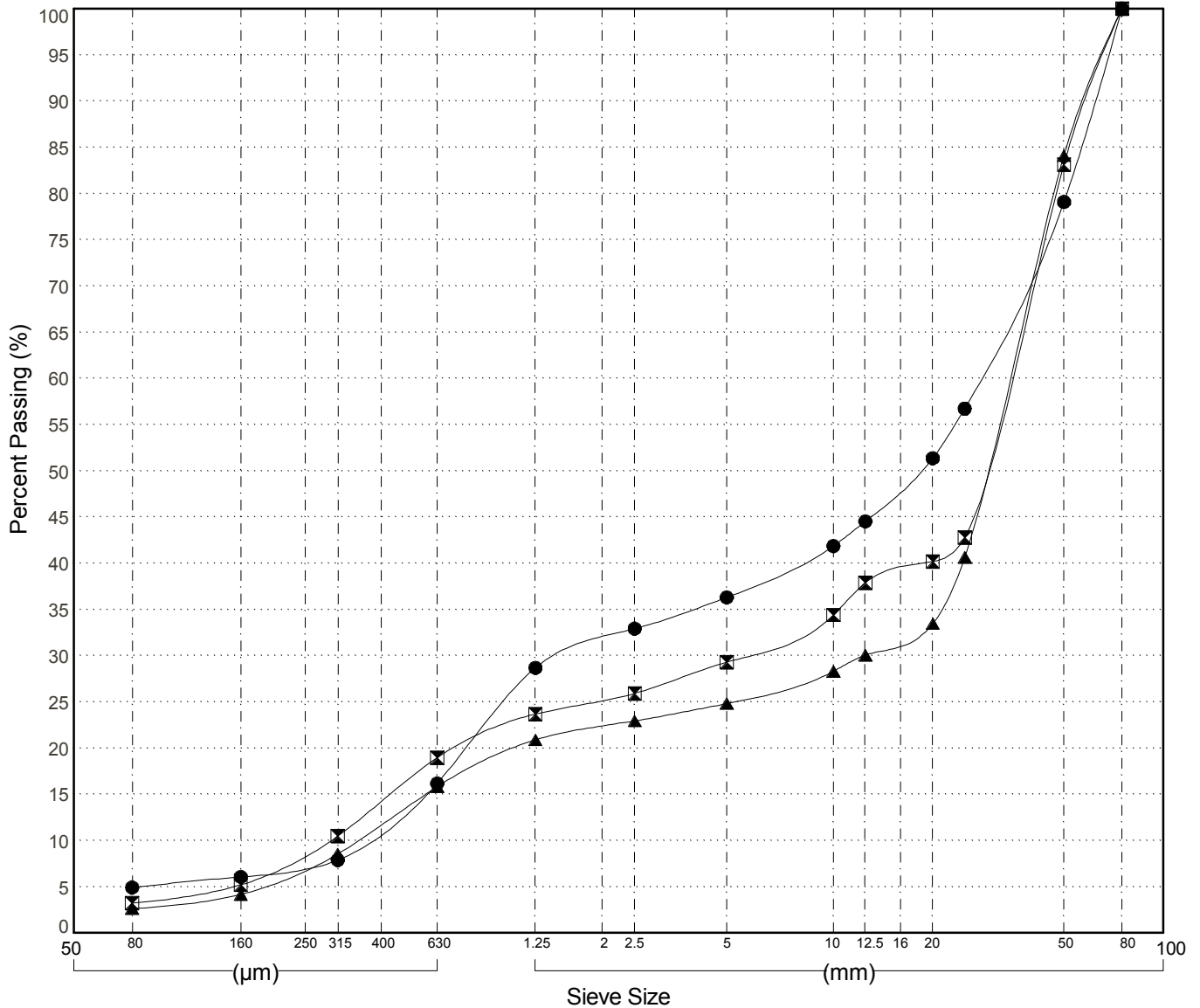
GRAIN SIZE ANALYSIS	Gravel Exploration	SOURCE/TP#: 891-5637
J.Magun Contracting	km 1062.1 RHS	PROJECT NO: 552-202955- 5501-1
Hitachi 200 LC	Coordinates:Z9N N6674341m E442017m	ELEVATION: 776.289673m

Master Revised June 2017

Field #	Lab #	Depth	Classification	%H2O	LL	PL	PI	Cc	Cu	D10
● 34	2016-124	0.2 to 0.6	POORLY GRADED GRAVEL with SAND(GP)	1.8	NP	NP	NP	0.2	73.6	0.376
☒ 35	2016-125	1.6 to 2.0	WELL-GRADED GRAVEL with SAND(GW)	2.5	NP	NP	NP	2.8	113.5	0.296
▲ 36	2016-126	3.4 to 3.8	POORLY GRADED GRAVEL with SAND(GP)	1.5	NP	NP	NP	12.5	94.1	0.362

Field #	Lab #	% PASSING														% Breakdown				
			100.0	80.0	50.0	25.0	20.0	12.5	10.0	5.0	2.5	1.25	0.630	0.315	0.160	0.080	Gravel	Sand	Silt	Clay
●	34	2016-124	100.0	100.0	79.1	56.7	51.4	44.5	41.9	36.3	32.9	28.7	16.2	7.9	6.1	4.9	63.7	31.4	4.9	4.9
☒	35	2016-125	100.0	100.0	83.1	42.8	40.2	37.9	34.4	29.3	25.9	23.7	19.0	10.5	5.2	3.2	70.7	26.1	3.2	3.2
▲	36	2016-126	100.0	100.0	84.1	40.6	33.5	30.1	28.3	24.8	22.9	20.9	15.8	8.5	4.2	2.6	75.2	22.2	2.6	2.6

Silt	Sand			Gravel	
	Fine	Medium	Coarse	Fine	Coarse

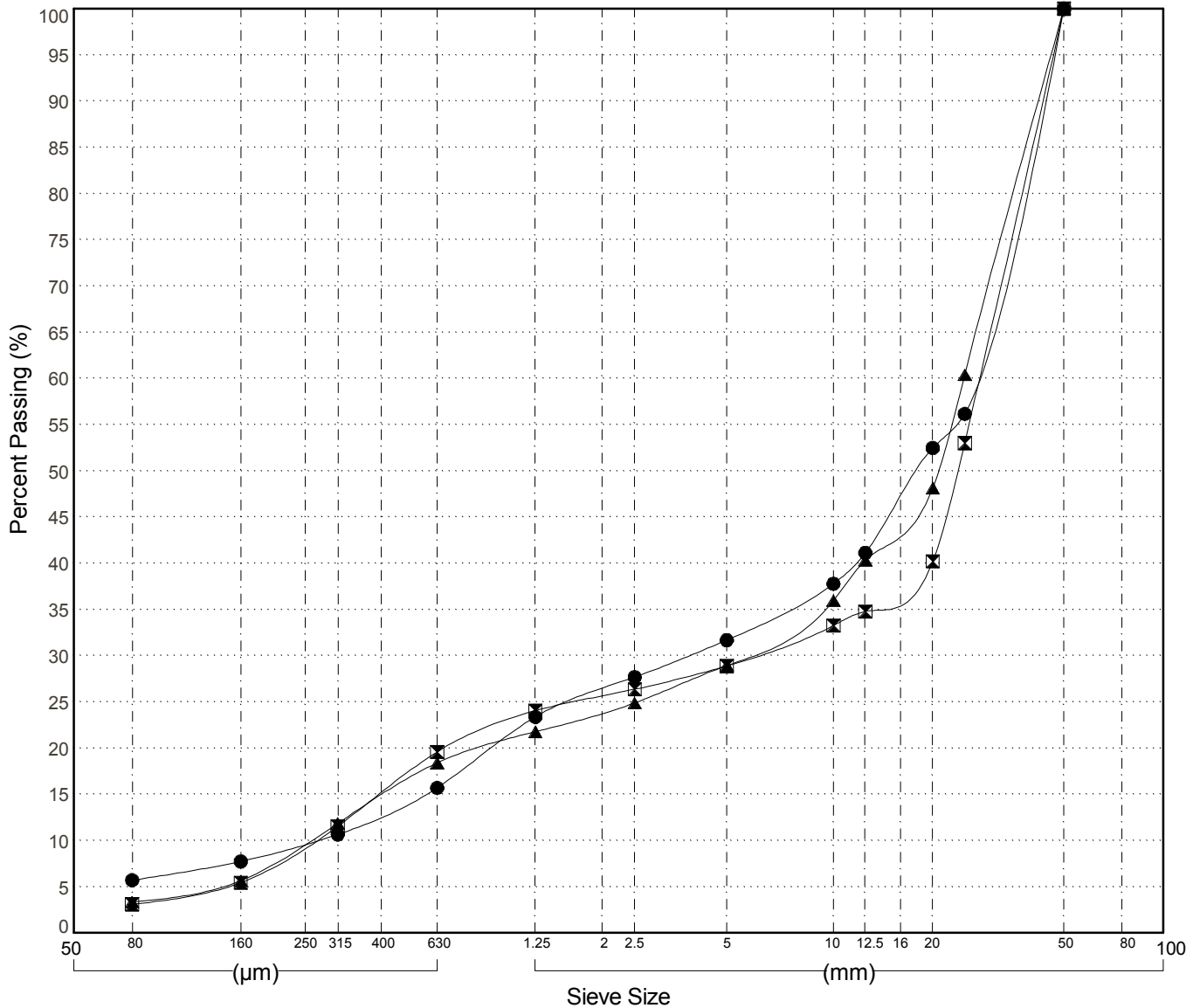


GRAIN SIZE ANALYSIS	Gravel Exploration	SOURCE/TP#: 891-5638
J.Magun Contracting	km 1062.1 RHS	PROJECT NO: 552-202955- 5501-1
Hitachi 200 LC	Coordinates:Z9N N6674431m E441896m	ELEVATION: 783.709351m

Master Revised June 2017

Field #	Lab #	Depth	Classification	%H2O	LL	PL	PI	Cc	Cu	D10										
● 37	2016-127	0.2 to 0.6	WELL-GRADED GRAVEL with SILT and SAND(GW-GM)	1.4	NP	NP	NP	1.8	98.1	0.271										
☒ 38	2016-128	1.8 to 2.2	POORLY GRADED GRAVEL with SAND(GP)	1.8	NP	NP	NP	4.5	104.4	0.265										
▲ 39	2016-129	3.2 to 3.6	POORLY GRADED GRAVEL with SAND(GP)	2.0	NP	NP	NP	4.4	96.5	0.257										
Field #	Lab #	100.0	80.0	50.0	25.0	20.0	12.5	10.0	5.0	2.5	1.25	0.630	0.315	0.160	0.080	%Breakdown				
																Gravel	Sand	Silt	Clay	
● 37	2016-127	100.0	100.0	100.0	56.2	52.5	41.1	37.8	31.7	27.7	23.4	15.7	10.7	7.7	5.7	68.3	26.0		5.7	
☒ 38	2016-128	100.0	100.0	100.0	53.0	40.2	34.8	33.3	28.9	26.4	24.1	19.6	11.5	5.5	3.1	71.1	25.8		3.1	
▲ 39	2016-129	100.0	100.0	100.0	60.4	48.1	40.3	36.0	28.9	24.9	21.8	18.4	11.9	5.7	3.3	71.1	25.6		3.3	

Silt	Sand			Gravel	
	Fine	Medium	Coarse	Fine	Coarse



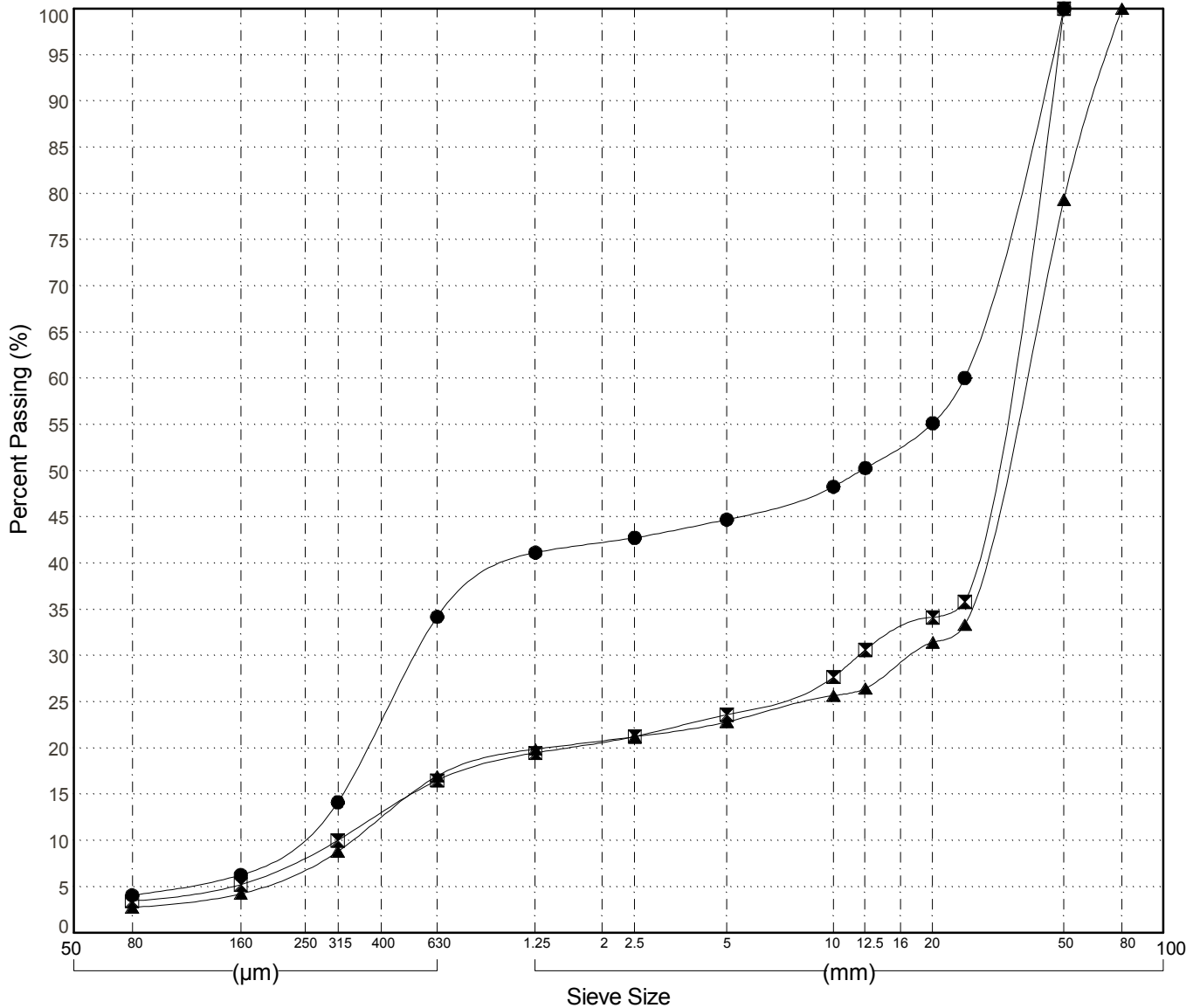
GRAIN SIZE ANALYSIS	Gravel Exploration	SOURCE/TP#: 891-5639
J.Magun Contracting	km 1062.1 RHS	PROJECT NO: 552-202955- 5501-1
Hitachi 200 LC	Coordinates:Z9N N6674483m E441843m	ELEVATION: 785.577454m

Master Revised June 2017

Field #	Lab #	Depth	Classification	%H2O	LL	PL	PI	Cc	Cu	D10
● 40	2016-130	0.2 to 0.6	POORLY GRADED GRAVEL with SAND(GP)	1.9	NP	NP	NP	0.1	113.1	0.220
☒ 41	2016-131	1.6 to 2.0	POORLY GRADED GRAVEL with SAND(GP)	1.6	NP	NP	NP	13.9	103.3	0.314
▲ 42	2016-132	3.2 to 3.6	POORLY GRADED GRAVEL with SAND(GP)	1.6	NP	NP	NP	23.4	107.3	0.348

Field #	Lab #	% PASSING	Sieve Size (mm)													% Breakdown			
			100.0	80.0	50.0	25.0	20.0	12.5	10.0	5.0	2.5	1.25	0.630	0.315	0.160	0.080	Gravel	Sand	Clay
●	40	2016-130	100.0	100.0	100.0	60.1	55.2	50.3	48.3	44.7	42.8	41.1	34.2	14.1	6.3	4.1	55.3	40.6	4.1
☒	41	2016-131	100.0	100.0	100.0	35.8	34.1	30.6	27.7	23.6	21.3	19.5	16.5	10.0	5.2	3.5	76.4	20.1	3.5
▲	42	2016-132	100.0	100.0	79.3	33.4	31.4	26.5	25.7	22.8	21.2	19.9	17.0	8.8	4.2	2.8	77.2	20.1	2.8

Silt	Sand			Gravel	
	Fine	Medium	Coarse	Fine	Coarse



GRAIN SIZE ANALYSIS	Gravel Exploration	SOURCE/TP#: 891-5640
J.Magun Contracting	km 1062.1 RHS	PROJECT NO: 552-202955- 5501-1
Hitachi 200 LC	Coordinates:Z9N N6674520m E441907m	ELEVATION: 784.729248m

Master Revised June 2017

Field #	Lab #	Depth	Classification	%H2O	LL	PL	PI	Cc	Cu	D10
● 43	2016-133	0.2 to 0.6	POORLY GRADED GRAVEL with SAND(GP)	1.6	NP	NP	NP	8.4	66.7	0.802
☒ 44	2016-134	1.6 to 2.0	POORLY GRADED GRAVEL with SAND(GP)	1.6	NP	NP	NP	34.7	129.2	0.352
▲ 45	2016-135	3.4 to 3.8	POORLY GRADED GRAVEL with SAND(GP)	1.7	NP	NP	NP	32.8	121.0	0.443

Field #	Lab #	% PASSING	Sieve Size (mm)													% Breakdown				
			100.0	80.0	50.0	25.0	20.0	12.5	10.0	5.0	2.5	1.25	0.630	0.315	0.160	0.080	Gravel	Sand	Silt	Clay
●	43	2016-133	100.0	100.0	51.9	33.0	30.6	25.3	22.4	17.8	15.5	13.3	8.2	4.5	2.9	2.1	82.2	15.7	2.1	
☒	44	2016-134	100.0	100.0	64.8	30.4	29.0	26.7	25.3	22.4	20.6	19.2	15.3	9.0	4.7	3.1	77.6	19.2	3.1	
▲	45	2016-135	100.0	100.0	51.7	25.9	24.3	23.0	21.4	19.2	17.6	16.4	12.8	7.3	3.8	2.5	80.8	16.7	2.5	

Silt	Sand			Gravel	
	Fine	Medium	Coarse	Fine	Coarse

