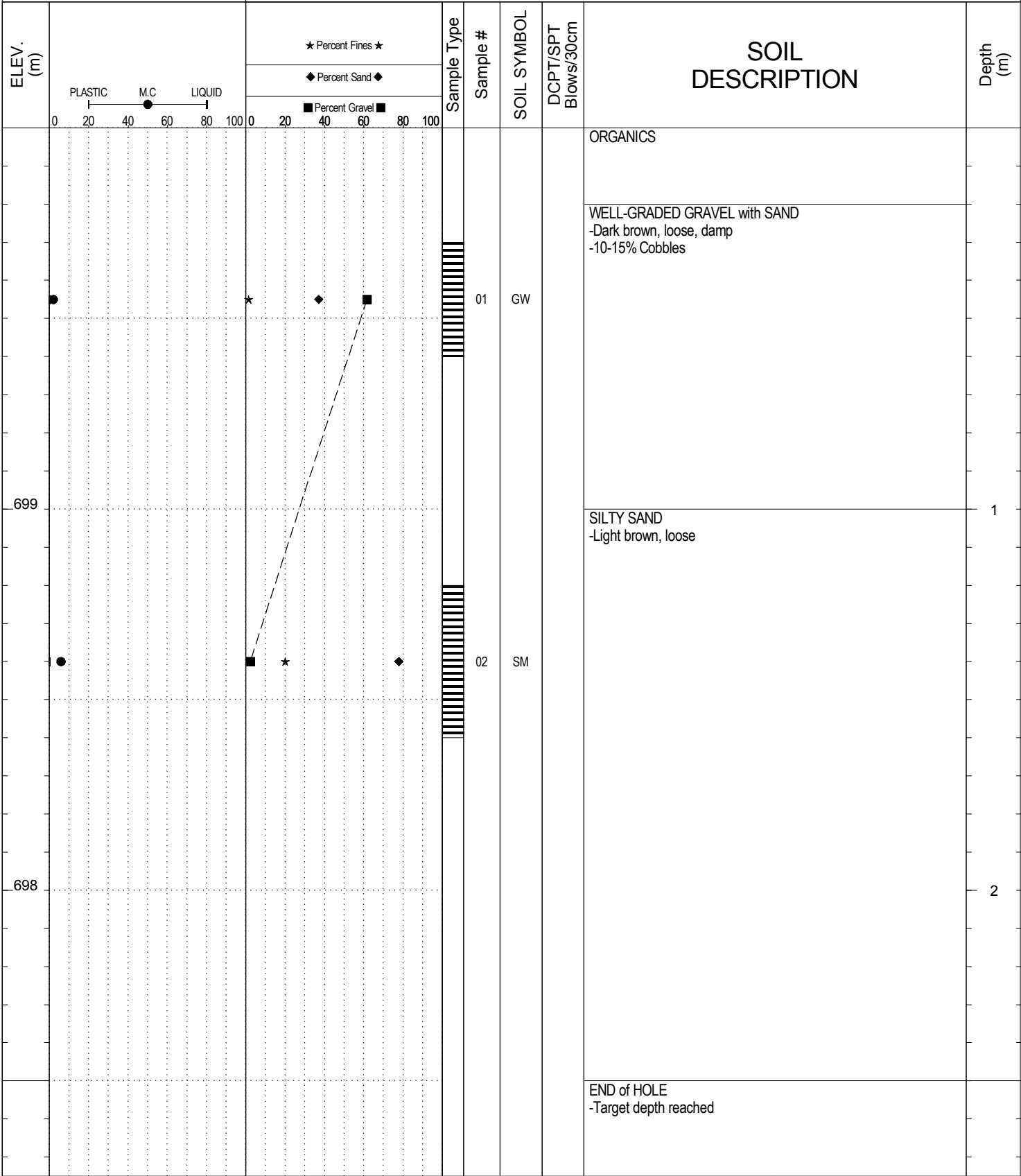


SAMPLE TYPE     UNDISTURBED     DCPT     AUGER     BULK     SPT     CORE



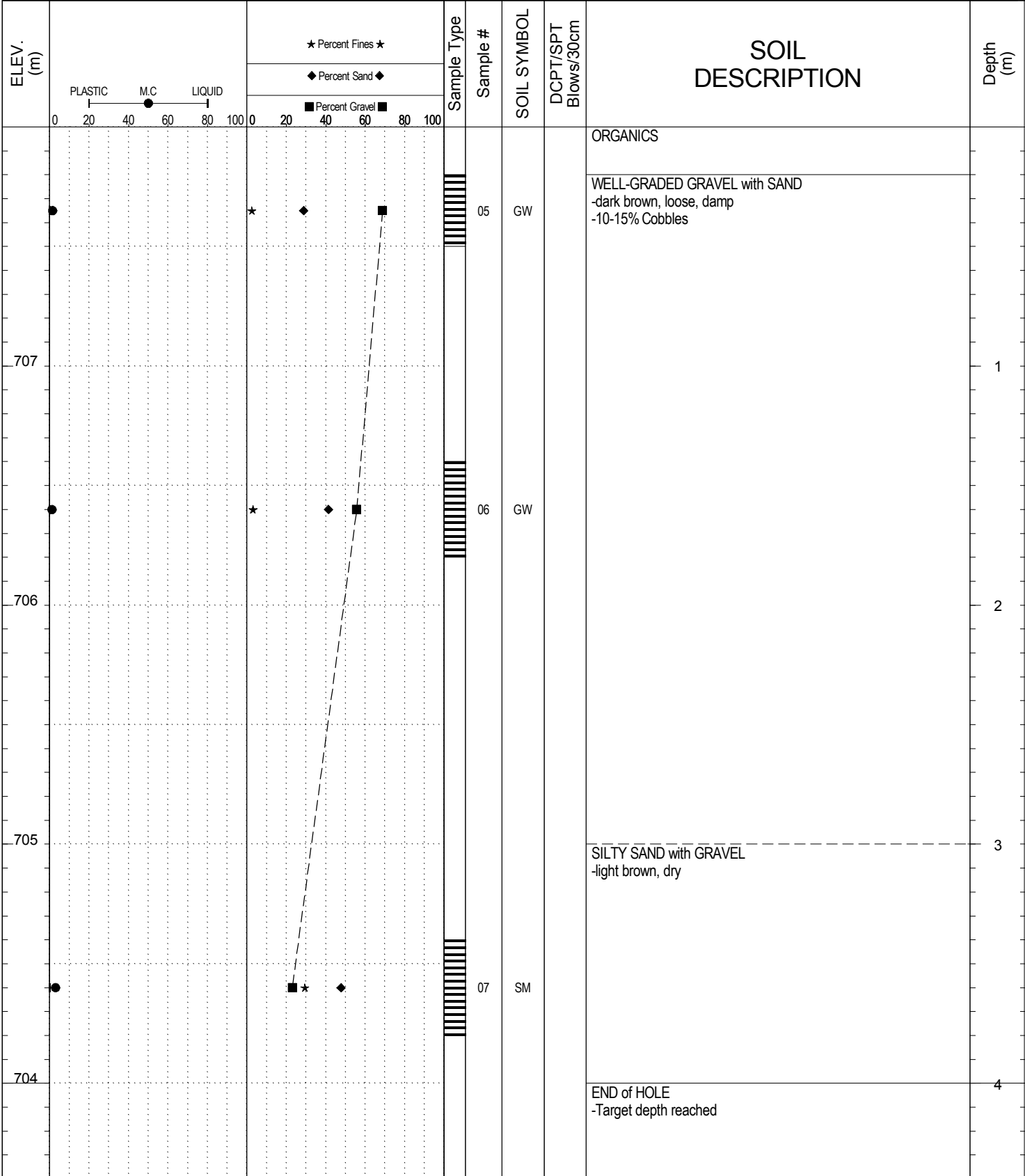
SUBSURFACE EXPLORATION AND TEST REPORT		Klondike Highway #2		SOURCE/TP#: 892-5642				
Arctic Backhoe		Gravel Exploration, Km 128 RHS		PROJECT NO: 552-202955-5206-1				
CAT Excavator 315D		Coordinates: Z8N N6691771m E512016m		ELEVATION: 708m				
SAMPLE TYPE		<input type="checkbox"/> UNDISTURBED <input checked="" type="checkbox"/> DCPT <input type="checkbox"/> AUGER <input type="checkbox"/> BULK <input checked="" type="checkbox"/> SPT <input type="checkbox"/> CORE						
ELEV. (m)	★ Percent Fines ★ ◆ Percent Sand ◆ ■ Percent Gravel ■		Sample Type	Sample #	SOIL SYMBOL	DCPT/SPT Blows/30cm	SOIL DESCRIPTION	Depth (m)
	PLASTIC      M.C      LIQUID 0      20      40      60      80      100      0      20      40      60      80      100							
707	●      ■		03	ML			ORGANICS	1
706	●      ■		04	ML			SILT -Light brown, very soft, dry	2
							END of HOLE -Target depth reached	
		LOGGED BY: G.Kennedy COMPILED BY: R.Kennedy-Kuiper REVIEWED BY: R.Stilwell		Termination Depth: 2.6m Complete: 6/28/2016 1:35:00 PM Pit #: 105 D-15		Page 1 of 1		

SUBSURFACE EXPLORATION AND TEST REPORT Klondike Highway #2 SOURCE/TP#: 892-5643

Arctic Backhoe Gravel Exploration, Km 128 RHS PROJECT NO: 552-202955-5206-1

CAT Excavator 315D Coordinates: Z8N N6691811m E511934m ELEVATION: 708m

SAMPLE TYPE  UNDISTURBED  DCPT  AUGER  BULK  SPT  CORE

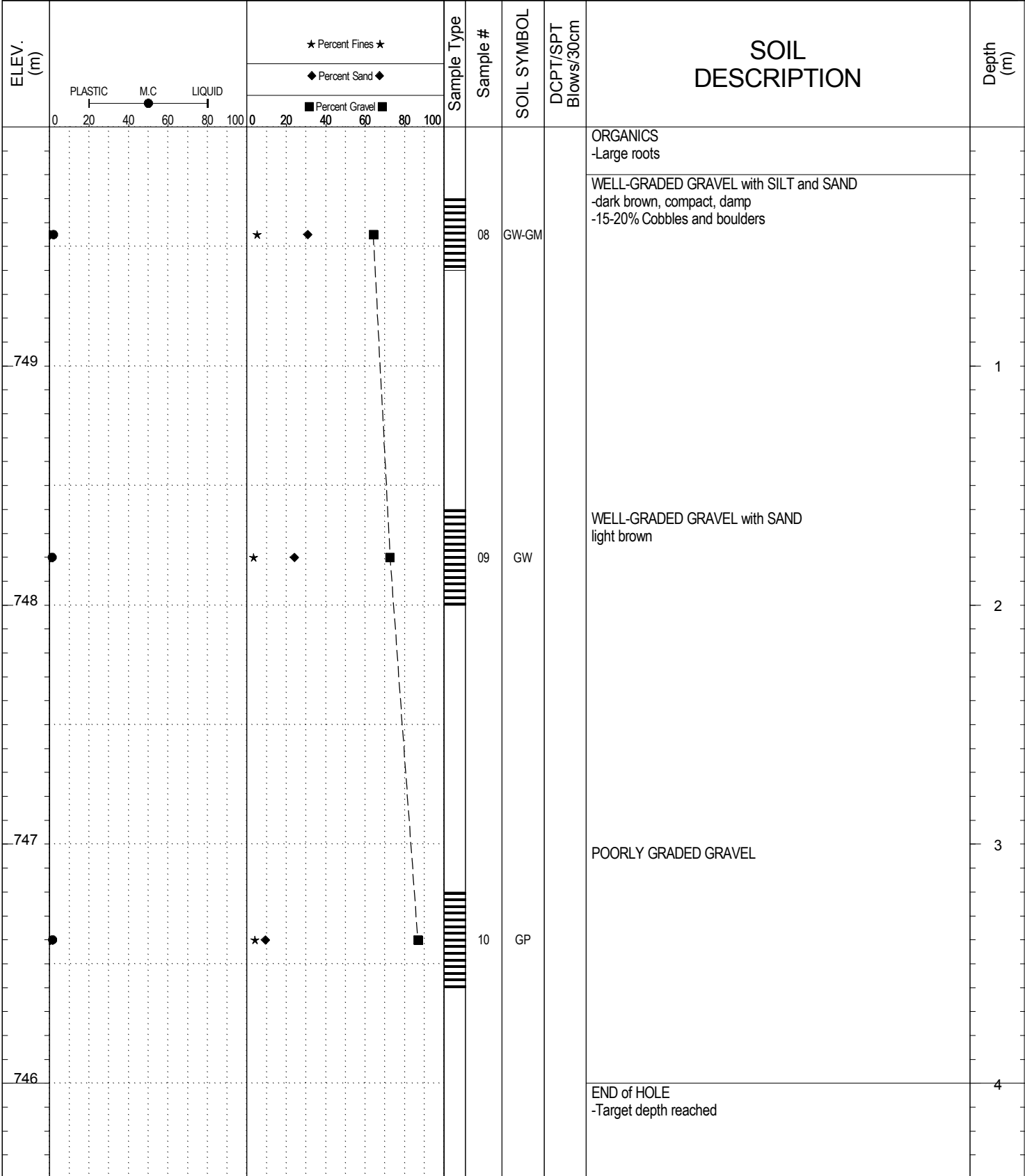


SUBSURFACE EXPLORATION AND TEST REPORT      Klondike Highway #2      SOURCE/TP#: 892-5644

Arctic Backhoe      Gravel Exploration, Km 128 RHS      PROJECT NO: 552-202955-5206-1

CAT Excavator 315D      Coordinates: Z8N N6691355m E512242m      ELEVATION: 750m

SAMPLE TYPE       UNDISTURBED       DCPT       AUGER       BULK       SPT       CORE

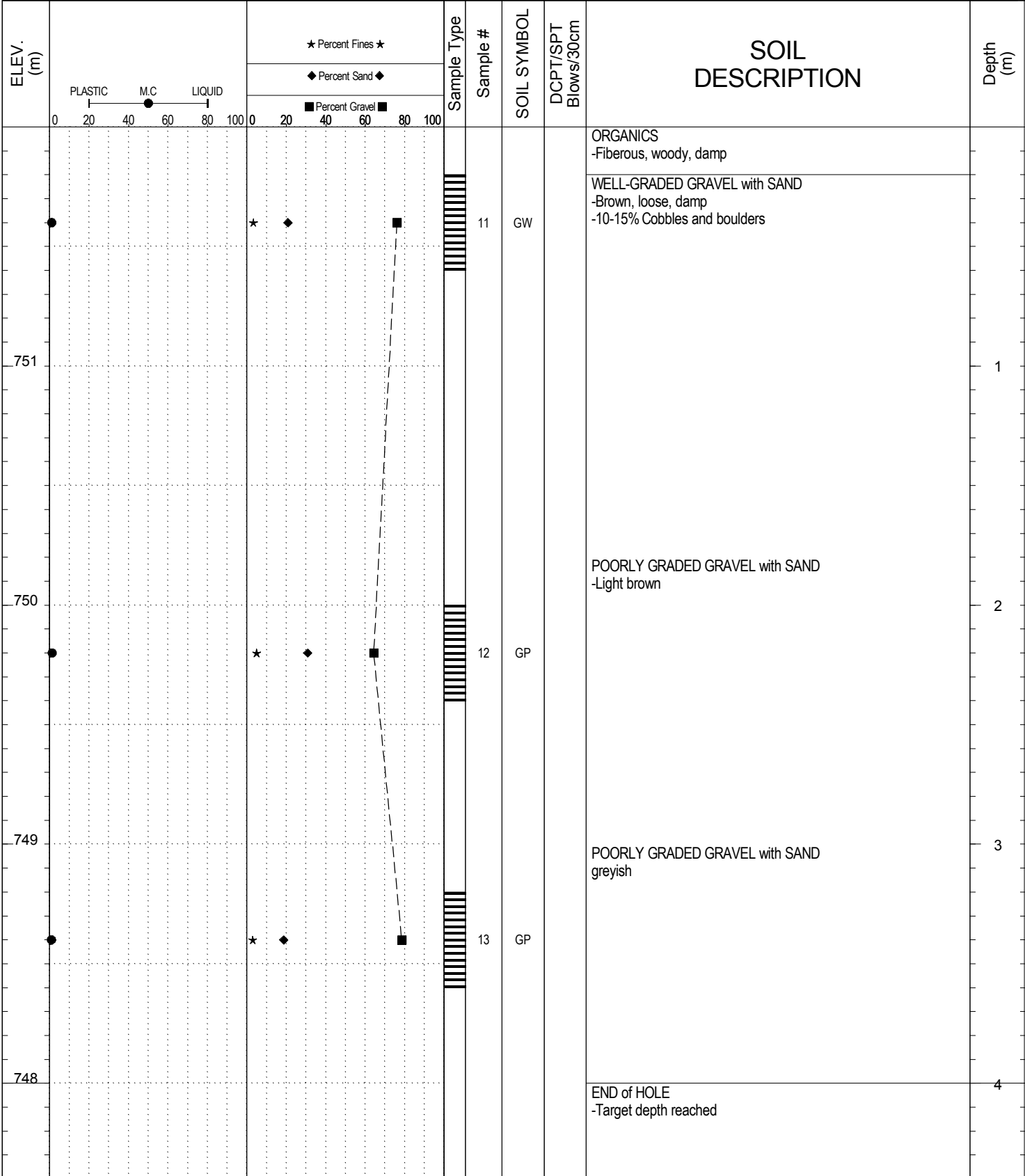


SUBSURFACE EXPLORATION AND TEST REPORT      Klondike Highway #2      SOURCE/TP#: 892-5645

Arctic Backhoe      Gravel Exploration, Km 128 RHS      PROJECT NO: 552-202955-5206-1

CAT Excavator 315D      Coordinates: Z8N N6691457m E512242m      ELEVATION: 752m

SAMPLE TYPE       UNDISTURBED       DCPT       AUGER       BULK       SPT       CORE



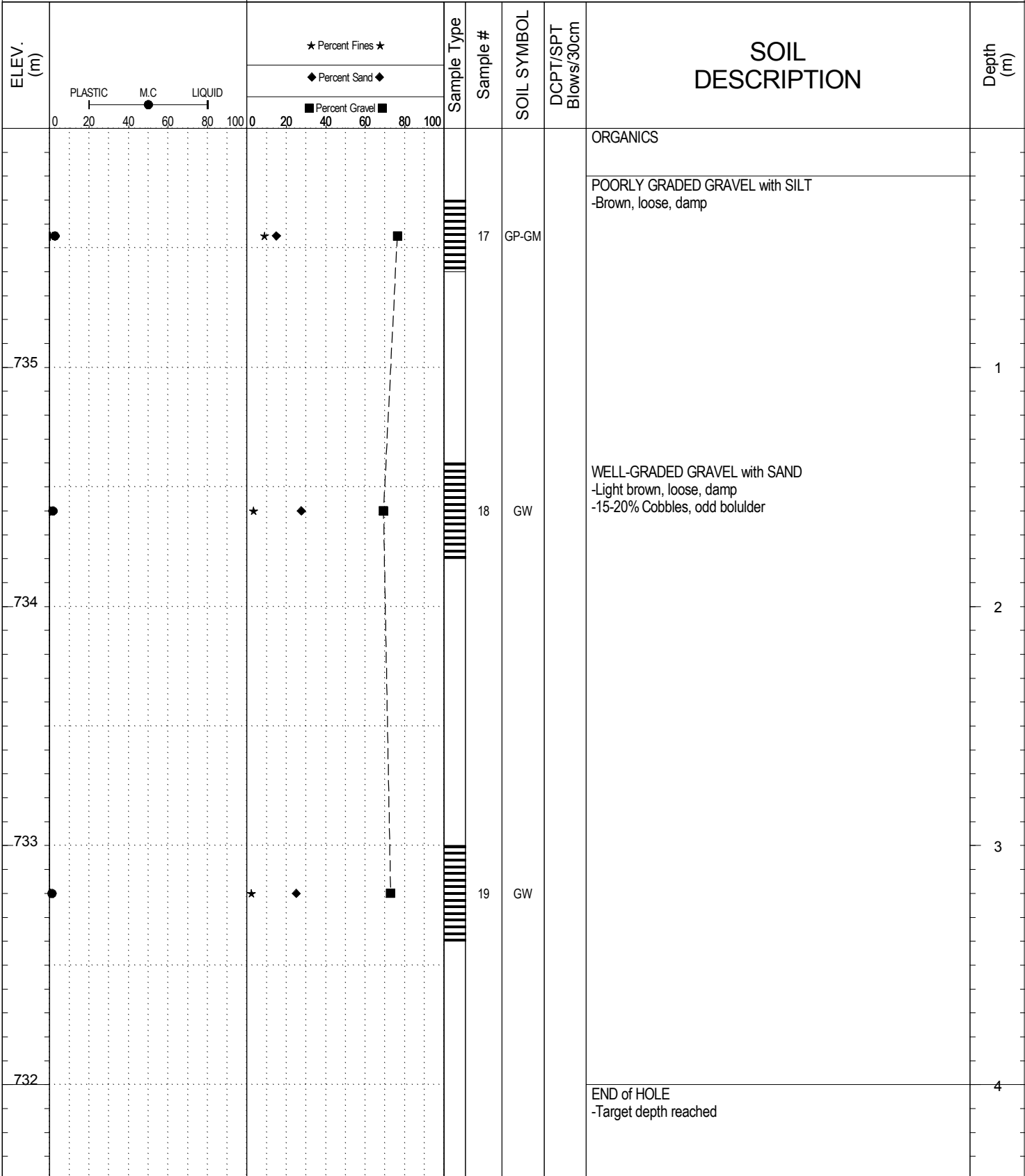
SUBSURFACE EXPLORATION AND TEST REPORT		Klondike Highway #2		SOURCE/TP#: 892-5646				
Arctic Backhoe		Gravel Exploration, Km 128 RHS		PROJECT NO: 552-202955-5206-1				
CAT Excavator 315D		Coordinates: Z8N N6691454m E512341m		ELEVATION: 759m				
SAMPLE TYPE		UNDISTURBED		DCPT				
		AUGER		BULK				
		SPT		CORE				
ELEV. (m)	PLASTIC      M.C      LIQUID 0      20      40      60      80      100		★ Percent Fines ★ ◆ Percent Sand ◆ ■ Percent Gravel ■		SOIL SYMBOL	DCPT/SPT Blows/30cm	SOIL DESCRIPTION	Depth (m)
	0	20	40	60				
758					14 GP		ORGANICS	1
757					15 GP		POORLY GRADED GRAVEL with SAND -grey, compact, damp -20% Cobbles, few boulders	2
756					16 GW		WELL-GRADED GRAVEL with SAND -dark brown	3
755							END of HOLE -Target depth reached	4

SUBSURFACE EXPLORATION AND TEST REPORT Klondike Highway #2 SOURCE/TP#: 892-5647

Arctic Backhoe Gravel Exploration, Km 128 RHS PROJECT NO: 552-202955-5206-1

CAT Excavator 315D Coordinates: Z8N N6691564m E512142m ELEVATION: 736m

SAMPLE TYPE  UNDISTURBED  DCPT  AUGER  BULK  SPT  CORE

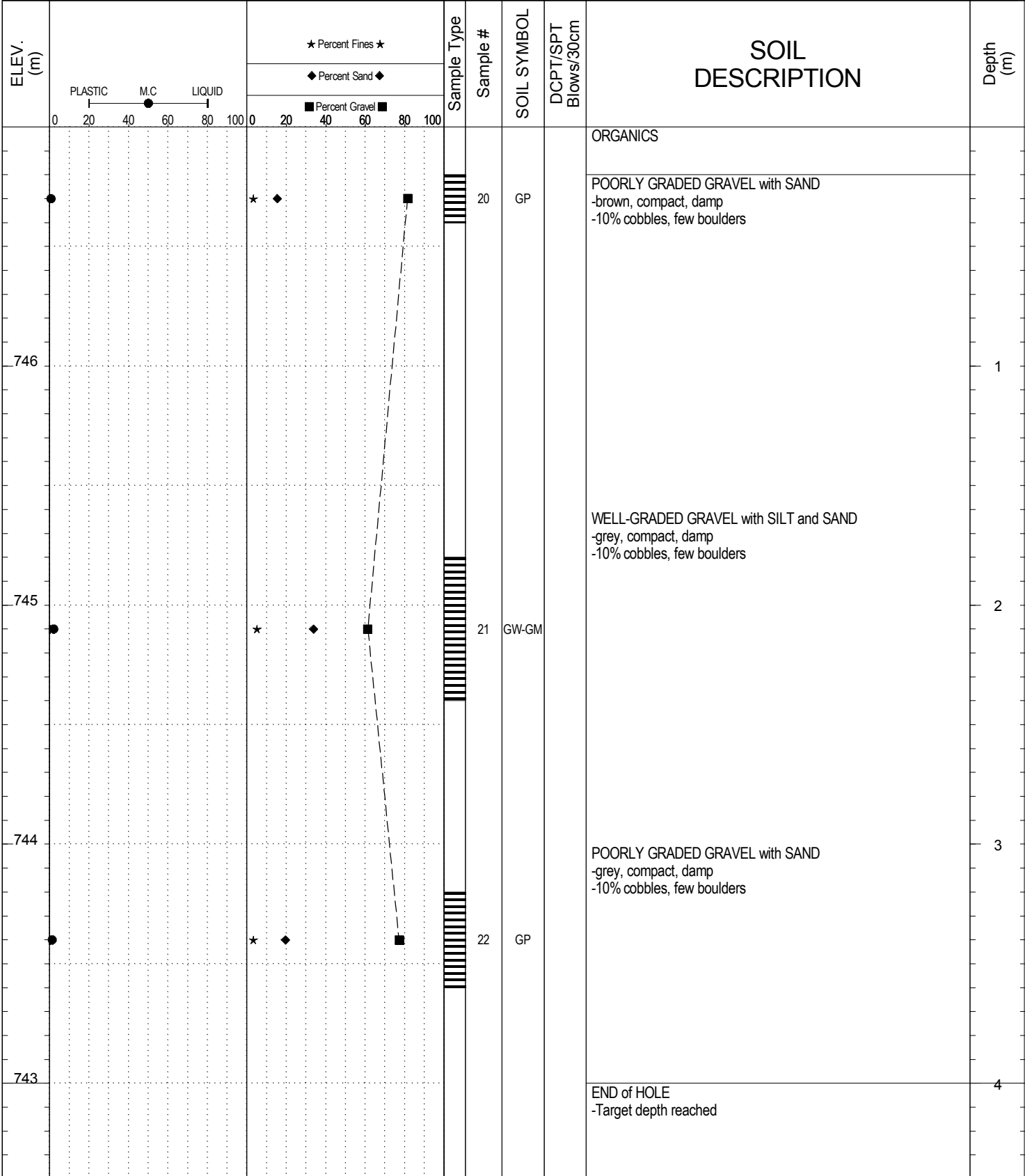


SUBSURFACE EXPLORATION AND TEST REPORT Klondike Highway #2 SOURCE/TP#: 892-5648

Arctic Backhoe Gravel Exploration, Km 128 RHS PROJECT NO: 552-202955-5206-1

CAT Excavator 315D Coordinates: Z8N N6691556m E512243m ELEVATION: 747m

SAMPLE TYPE  UNDISTURBED  DCPT  AUGER  BULK  SPT  CORE



SUBSURFACE EXPLORATION AND TEST REPORT		Klondike Highway #2		SOURCE/TP#: 892-5649				
Arctic Backhoe		Gravel Exploration, Km 128 RHS		PROJECT NO: 552-202955-5206-1				
CAT Excavator 315D		Coordinates: Z8N N6691556m E512344m		ELEVATION: 756m				
SAMPLE TYPE		UNDISTURBED		DCPT				
		AUGER		BULK				
		SPT		CORE				
ELEV. (m)	PLASTIC      M.C      LIQUID 0      20      40      60      80      100		★ Percent Fines ★ ◆ Percent Sand ◆ ■ Percent Gravel ■		SOIL SYMBOL	DCPT/SPT Blows/30cm	SOIL DESCRIPTION	Depth (m)
	0	20	40	60				
756							ORGANICS	
755					23	GW	WELL-GRADED GRAVEL with SAND -light brown/grey, compact, damp -10-15% cobbles and boulders	1
754					24	GW	-dark brown	2
753					25	GP	POORLY GRADED GRAVEL with SAND -dark brown, compact, damp -10-15% cobbles and boulders	3
752							END of HOLE -Target depth reached	4



SUBSURFACE EXPLORATION AND TEST REPORT		Klondike Highway #2		SOURCE/TP#: 892-5650					
Arctic Backhoe		Gravel Exploration, Km 128 RHS		PROJECT NO: 552-202955-5206-1					
CAT Excavator 315D		Coordinates: Z8N N6691655m E512145m		ELEVATION: 724m					
SAMPLE TYPE		UNDISTURBED		DCPT					
		AUGER		BULK					
		SPT		CORE					
ELEV. (m)	PLASTIC      M.C      LIQUID 0      20      40      60      80      100			Sample Type	Sample #	SOIL SYMBOL	DCPT/SPT Blows/30cm	SOIL DESCRIPTION	Depth (m)
	★ Percent Fines ★ ◆ Percent Sand ◆ ■ Percent Gravel ■								
723					26	GP		ORGANICS  POORLY GRADED GRAVEL dark brown, loose, damp -15-20% cobbles, odd boulder	1
722					27	GP		POORLY GRADED GRAVEL with SAND	2
721								-grey/brown	3
720					28	GP		END of HOLE -Target depth reached	4



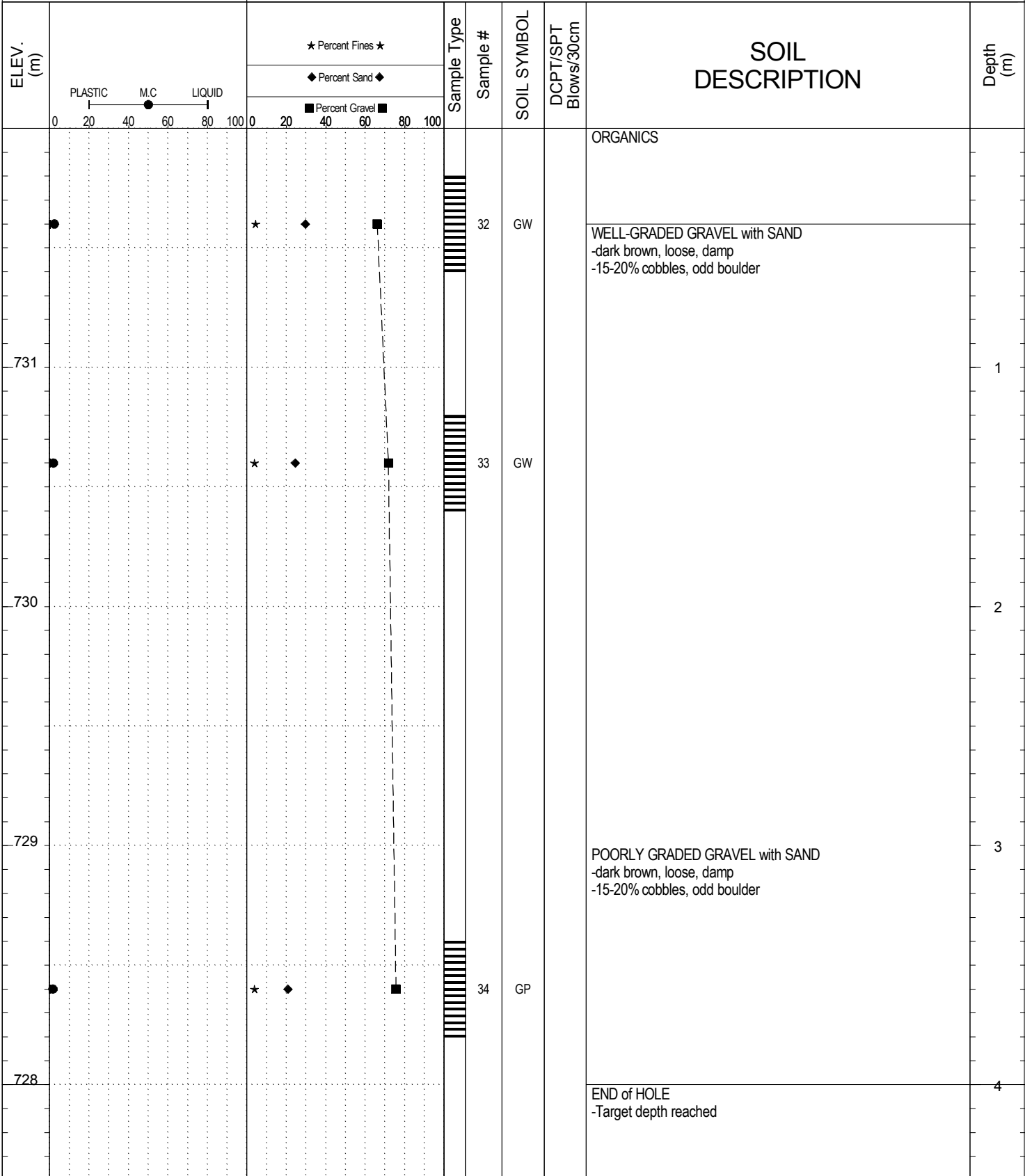
SUBSURFACE EXPLORATION AND TEST REPORT		Klondike Highway #2		SOURCE/TP#: 892-5651					
Arctic Backhoe		Gravel Exploration, Km 128 RHS		PROJECT NO: 552-202955-5206-1					
CAT Excavator 315D		Coordinates: Z8N N6691656m E512244m		ELEVATION: 734m					
SAMPLE TYPE		UNDISTURBED		DCPT					
		AUGER		BULK					
		SPT		CORE					
ELEV. (m)	PLASTIC      M.C      LIQUID 0      20      40      60      80      100		★ Percent Fines ★ ◆ Percent Sand ◆ ■ Percent Gravel ■		SOIL SYMBOL	DCPT/SPT Blows/30cm	SOIL DESCRIPTION	Depth (m)	
	0	20	40	60					80
733			★	◆	■	29	GP	ORGANICS -brown, fibrous  POORLY GRADED GRAVEL with SAND -brown, loose, damp -10-15% cobbles, odd boulder	1
732			★	◆	■	30	GP		2
731			★	◆	■	31	GW	WELL-GRADED GRAVEL with SAND -brown, loose, damp -10-15% cobbles, odd boulder	3
730								END of HOLE -Target depth reached	4

SUBSURFACE EXPLORATION AND TEST REPORT      Klondike Highway #2      SOURCE/TP#: 892-5652

Arctic Backhoe      Gravel Exploration, Km 128 RHS      PROJECT NO: 552-202955-5206-1

CAT Excavator 315D      Coordinates: Z8N N6691654m E512343m      ELEVATION: 732m

SAMPLE TYPE       UNDISTURBED       DCPT       AUGER       BULK       SPT       CORE



SUBSURFACE EXPLORATION AND TEST REPORT		Klondike Highway #2		SOURCE/TP#: 892-5653	
Arctic Backhoe		Gravel Exploration, Km 128 RHS		PROJECT NO: 552-202955-5206-1	
CAT Excavator 315D		Coordinates: Z8N N6691751m E512141m		ELEVATION: 716m	
SAMPLE TYPE		<input type="checkbox"/> UNDISTURBED <input checked="" type="checkbox"/> DCPT <input type="checkbox"/> AUGER <input type="checkbox"/> BULK <input checked="" type="checkbox"/> SPT <input type="checkbox"/> CORE			
ELEV. (m)	PLASTIC      M.C      LIQUID 0      20      40      60      80      100		★ Percent Fines ★ ◆ Percent Sand ◆ ■ Percent Gravel ■		SOIL DESCRIPTION
	0      20      40      60      80      100		Sample Type Sample # SOIL SYMBOL DCPT/SPT Blows/30cm		
715			Sample # 35 SOIL SYMBOL GP DCPT/SPT Blows/30cm		ORGANICS  POORLY GRADED GRAVEL with SAND -brown, loose, damp -15-20% cobbles, some boulders
714			Sample # 36 SOIL SYMBOL GP DCPT/SPT Blows/30cm		POORLY GRADED GRAVEL
713			Sample # 37 SOIL SYMBOL GP DCPT/SPT Blows/30cm		POORLY GRADED GRAVEL with SAND
712					END of HOLE -Target depth reached
		LOGGED BY: G.Kennedy COMPILED BY: R.Kennedy-Kuiper REVIEWED BY: R.Stilwell		Termination Depth: 4m Complete: 6/28/2016 1:55:00 PM Pit #: 105 D-15	

SUBSURFACE EXPLORATION AND TEST REPORT		Klondike Highway #2		SOURCE/TP#: 892-5654					
Arctic Backhoe		Gravel Exploration, Km 128 RHS		PROJECT NO: 552-202955-5206-1					
CAT Excavator 315D		Coordinates: Z8N N6691756m E512246m		ELEVATION: 719m					
SAMPLE TYPE		UNDISTURBED		DCPT					
		AUGER		BULK					
		SPT		CORE					
ELEV. (m)	PLASTIC      M.C      LIQUID 0      20      40      60      80      100			Sample Type	Sample #	SOIL SYMBOL	DCPT/SPT Blows/30cm	SOIL DESCRIPTION	Depth (m)
	★ Percent Fines ★	◆ Percent Sand ◆	■ Percent Gravel ■						
718					38	GW		ORGANICS	1
717								WELL-GRADED GRAVEL -light brown, loose, damp -odd boulder, cobbles	
716					39	GP		POORLY GRADED GRAVEL with SAND -light brown, loose, damp -odd boulder, cobbles	2
715					40	GP			3
								END of HOLE -Target depth reached	4

SUBSURFACE EXPLORATION AND TEST REPORT		Klondike Highway #2		SOURCE/TP#: 892-5655				
Arctic Backhoe		Gravel Exploration, Km 128 RHS		PROJECT NO: 552-202955-5206-1				
CAT Excavator 315D		Coordinates: Z8N N6691753m E512344m		ELEVATION: 732m				
SAMPLE TYPE		UNDISTURBED		DCPT				
		AUGER		BULK				
		SPT		CORE				
ELEV. (m)	PLASTIC      M.C      LIQUID 0      20      40      60      80      100		★ Percent Fines ★ ◆ Percent Sand ◆ ■ Percent Gravel ■		SOIL SYMBOL	DCPT/SPT Blows/30cm	SOIL DESCRIPTION	Depth (m)
	0	20	40	60				
731					41	ML	ORGANICS  SANDY SILT -brown/grey, soft -5% cobbles, odd boulder	1
730					42	GP	POORLY GRADED GRAVEL with SAND -brown/grey, loose -5-10% cobbles, odd boulder	2
729							SILTY GRAVEL with SAND -brown/grey, loose -5-10% cobbles, odd boulders	3
728					43	GM	END of HOLE -Target depth reached	4

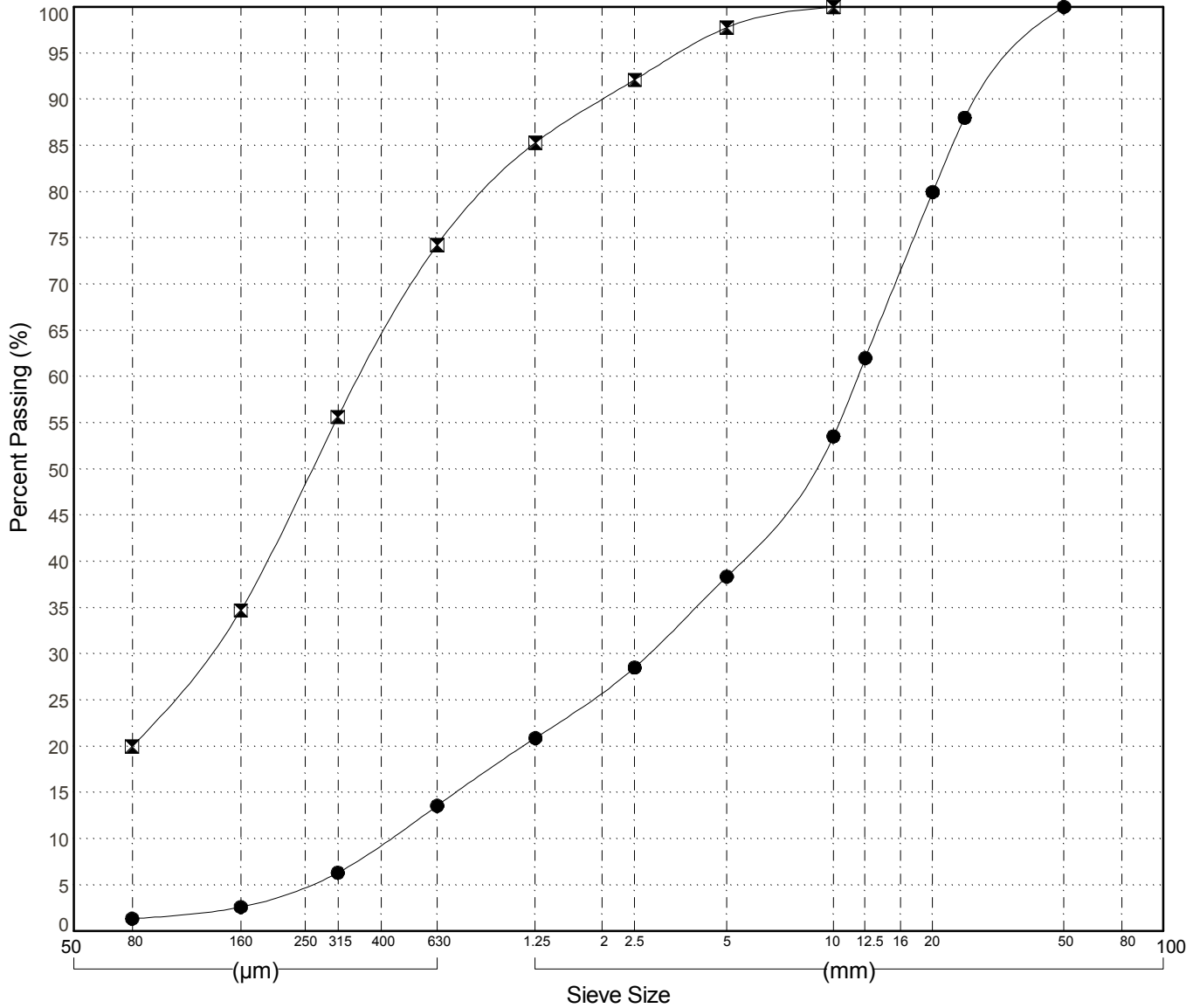
SUBSURFACE EXPLORATION AND TEST REPORT		Klondike Highway #2		SOURCE/TP#: 892-5656					
Arctic Backhoe		Gravel Exploration, Km 128 RHS		PROJECT NO: 552-202955-5206-1					
CAT Excavator 315D		Coordinates: Z8N N6691355m E512113m		ELEVATION: 741m					
SAMPLE TYPE		UNDISTURBED		DCPT					
		AUGER		BULK					
		SPT		CORE					
ELEV. (m)	PLASTIC      M.C      LIQUID 0      20      40      60      80      100			Sample Type	Sample #	SOIL SYMBOL	DCPT/SPT Blows/30cm	SOIL DESCRIPTION	Depth (m)
	★ Percent Fines ★ ◆ Percent Sand ◆ ■ Percent Gravel ■								
740					44	GP-GM		ORGANICS  POORLY GRADED GRAVEL with SILT and SAND -light brown/grey, compact, dry -20% cobbles, odd boulder	1
739					45	GP		POORLY GRADED GRAVEL with SAND  -loose	2
738					46	GW		WELL-GRADED GRAVEL with SAND -light brown/grey, loose, dry -20% cobbles, odd boulder	3
								END of HOLE -Refusal due to sloughing	

GRAIN SIZE ANALYSIS	Gravel Exploration	SOURCE/TP#: 892-5641
Arctic Backhoe	Km 128 RHS	PROJECT NO: 552-202955-5206-1
CAT Excavator 315D	Coordinates:Z8N N6691740m E511897m	ELEVATION: 700m

Master Revised June 2017

Field #	Lab #	Depth	Classification											%H2O	LL	PL	PI	Cc	Cu	D10
● 01	2016-136	0.3 to 0.6	WELL-GRADED GRAVEL with SAND(GW)											2.0	NP	NP	NP	1.4	26.5	0.447
☒ 02	2016-137	1.2 to 1.6	SILTY SAND(SM)											5.8	NP	NP	NP			
Field #	Lab #	% PASSING	100.0	80.0	50.0	25.0	20.0	12.5	10.0	5.0	2.5	1.25	0.630	0.315	0.160	0.080	% Breakdown			
			Gravel	Sand	Silt	Clay														
● 01	2016-136	100.0	100.0	100.0	88.0	80.0	62.0	53.5	38.4	28.5	20.9	13.6	6.3	2.6	1.4	61.6	37.0	1.4		
☒ 02	2016-137	100.0	100.0	100.0	100.0	100.0	100.0	100.0	97.8	92.1	85.3	74.2	55.6	34.7	20.0	2.2	77.8	20.0		

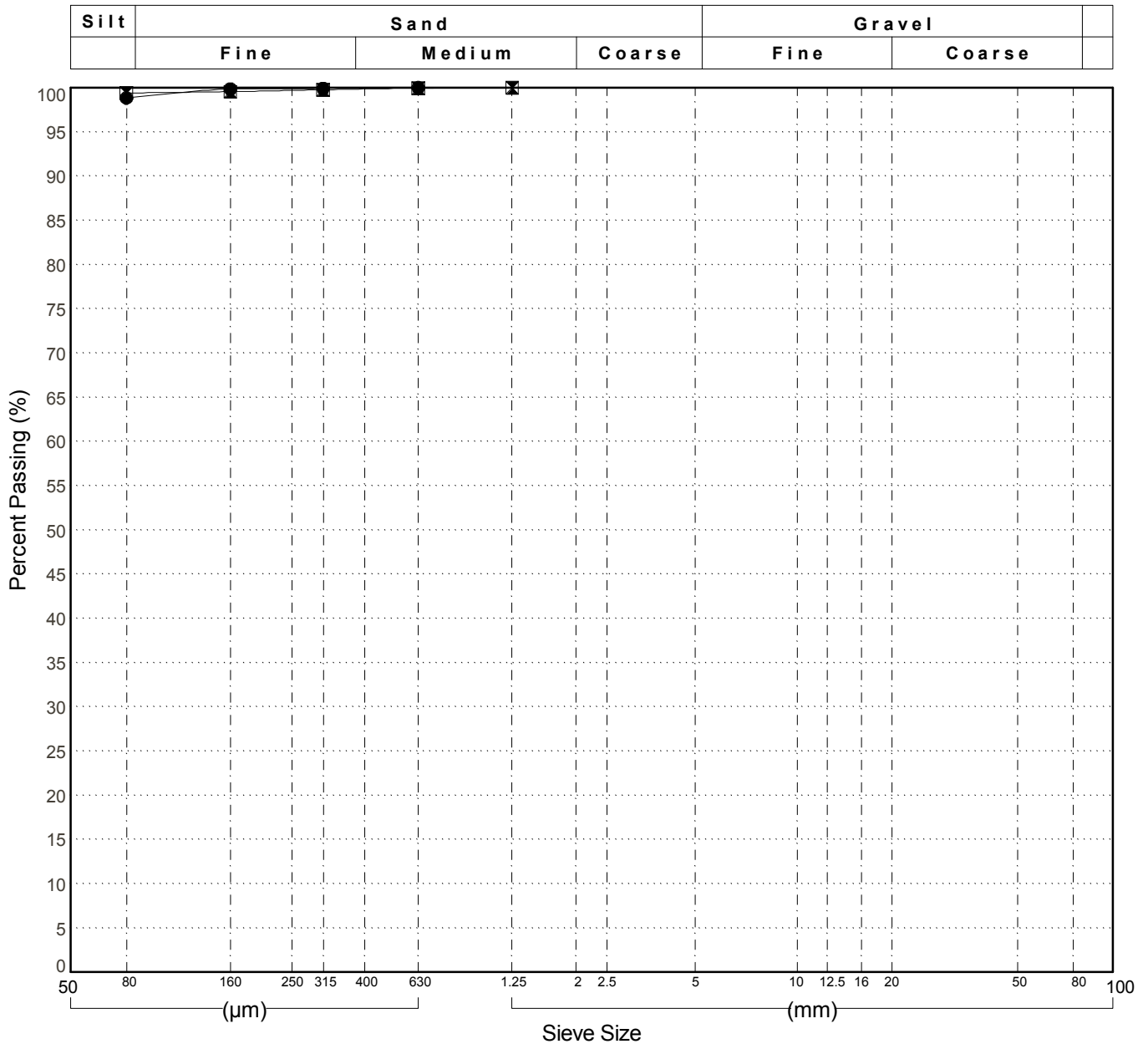
Silt	Sand			Gravel	
	Fine	Medium	Coarse	Fine	Coarse



GRAIN SIZE ANALYSIS	Gravel Exploration	SOURCE/TP#: 892-5642
Arctic Backhoe	Km 128 RHS	PROJECT NO: 552-202955-5206-1
CAT Excavator 315D	Coordinates:Z8N N6691771m E512016m	ELEVATION: 708m

Master Revised June 2017

Field #	Lab #	Depth	Classification													%H2O	LL	PL	PI	Cc	Cu	D10
● 03	2016-138	0.3 to 0.6	SILT (ML)													13.1	NP	NP	NP			
☒ 04	2016-139	1.2 to 1.6	SILT (ML)													6.4	NP	NP	NP			
Field #		Lab #	100.0	80.0	50.0	25.0	20.0	12.5	10.0	5.0	2.5	1.25	0.630	0.315	0.160	0.080	% Breakdown					
●	03	2016-138	100.0	100.0	100.0	100.0	100.0	100.0	100.0	100.0	100.0	100.0	100.0	99.9	99.8	98.8	0.0	1.2	98.8			
☒	04	2016-139	100.0	100.0	100.0	100.0	100.0	100.0	100.0	100.0	100.0	100.0	99.9	99.8	99.6	99.4	0.0	0.6	99.4			



GRAIN SIZE ANALYSIS	Gravel Exploration	SOURCE/TP#: 892-5643
Arctic Backhoe	Km 128 RHS	PROJECT NO: 552-202955-5206-1
CAT Excavator 315D	Coordinates:Z8N N6691811m E511934m	ELEVATION: 708m

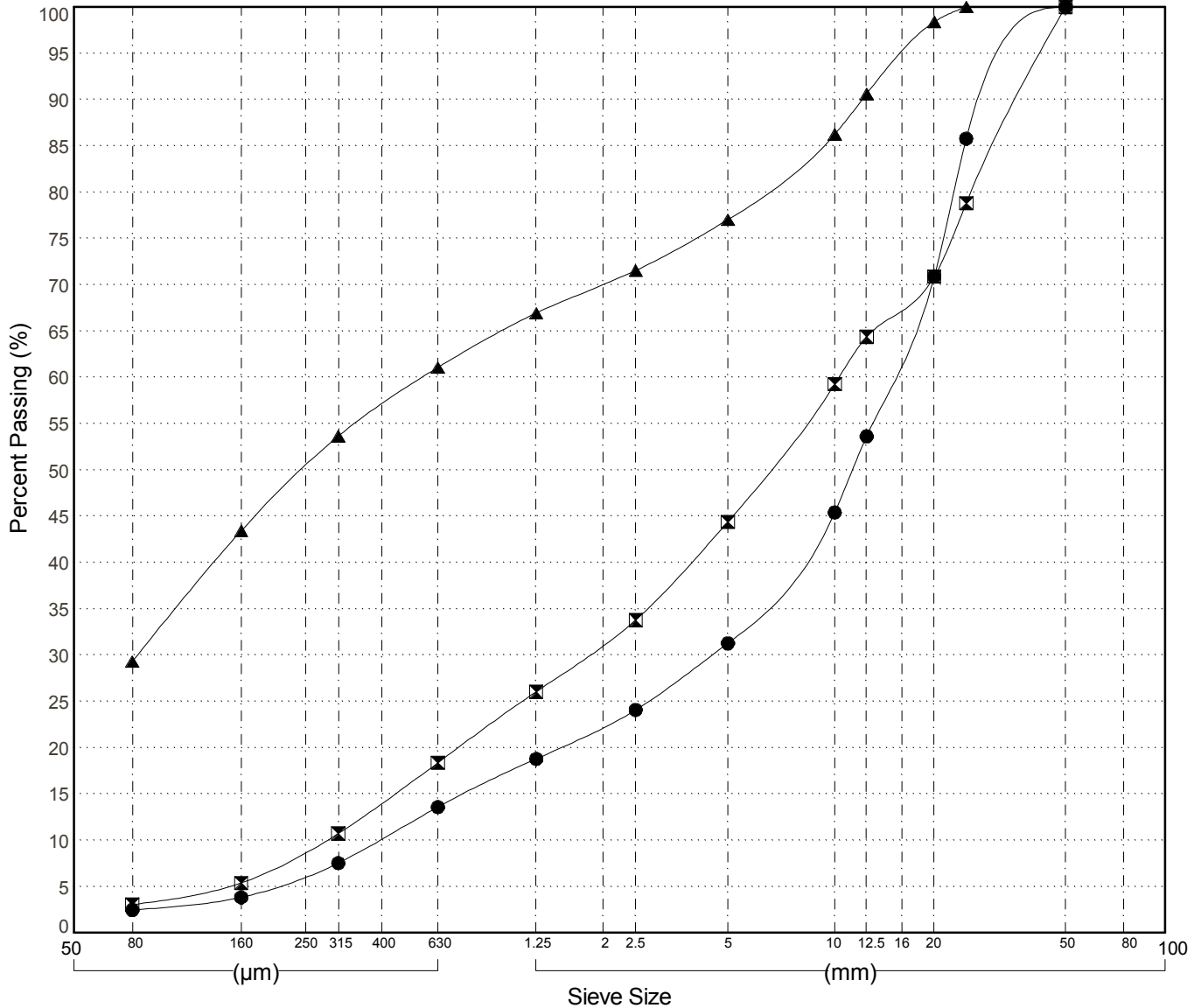
Master Revised June 2017

Field #	Lab #	Depth	Classification	%H2O	LL	PL	PI	Cc	Cu	D10
● 05	2016-140	0.2 to 0.5	WELL-GRADED GRAVEL with SAND(GW)	1.5	NP	NP	NP	2.9	35.6	0.418
☒ 06	2016-141	1.4 to 1.8	WELL-GRADED GRAVEL with SAND(GW)	1.2	NP	NP	NP	1.1	36.0	0.287
▲ 07	2016-142	3.4 to 3.8	SILTY SAND with GRAVEL(SM)	3.0	NP	NP	NP			

Field #	Lab #	% PASSING	Sieve Size (mm)													% Breakdown				
			100.0	80.0	50.0	25.0	20.0	12.5	10.0	5.0	2.5	1.25	0.630	0.315	0.160	0.080	Gravel	Sand	Silt	Clay
● 05	2016-140	100.0	100.0	100.0	100.0	85.8	70.9	53.6	45.4	31.3	24.1	18.8	13.6	7.5	3.8	2.5	68.7	28.8	2.5	
☒ 06	2016-141	100.0	100.0	100.0	78.8	70.9	64.4	59.3	44.4	33.8	26.0	18.4	10.7	5.4	3.1	55.6	41.3	3.1		
▲ 07	2016-142	100.0	100.0	100.0	100.0	98.4	90.6	86.2	77.0	71.5	66.9	61.1	53.6	43.4	29.3	23.0	47.7	29.3		

Silt	Sand			Gravel	
	Fine	Medium	Coarse	Fine	Coarse



GRAIN SIZE ANALYSIS	Gravel Exploration	SOURCE/TP#: 892-5644
Arctic Backhoe	Km 128 RHS	PROJECT NO: 552-202955-5206-1
CAT Excavator 315D	Coordinates:Z8N N6691355m E512242m	ELEVATION: 750m

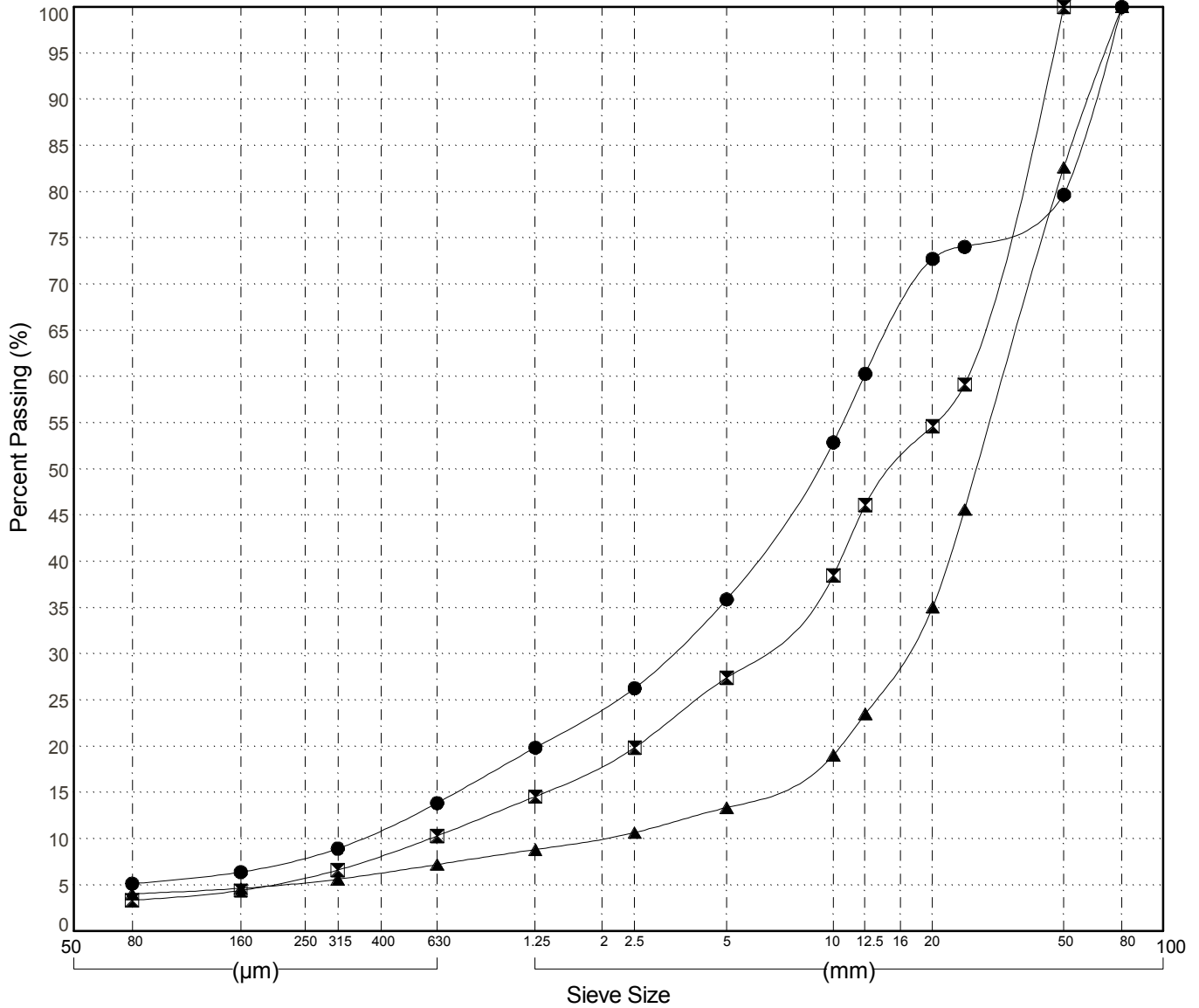
Master Revised June 2017

Field #	Lab #	Depth	Classification	%H2O	LL	PL	PI	Cc	Cu	D10
● 08	2016-143	0.3 to 0.6	WELL-GRADED GRAVEL with SILT and SAND(GW-GM)	1.9	NP	NP	NP	2.3	33.9	0.365
☒ 09	2016-144	1.6 to 2.0	WELL-GRADED GRAVEL with SAND(GW)	1.2	NP	NP	NP	2.1	42.7	0.595
▲ 10	2016-145	3.2 to 3.6	POORLY GRADED GRAVEL(GP)	1.4	NP	NP	NP	4.2	16.8	1.943

Field #	Lab #	% PASSING														% Breakdown				
			100.0	80.0	50.0	25.0	20.0	12.5	10.0	5.0	2.5	1.25	0.630	0.315	0.160	0.080	Gravel	Sand	Silt	Clay
●	08	2016-143	100.0	100.0	79.7	74.0	72.7	60.3	52.9	35.9	26.3	19.9	13.9	8.9	6.4	5.2	64.1	30.8	5.2	
☒	09	2016-144	100.0	100.0	100.0	59.2	54.6	46.1	38.5	27.4	19.9	14.6	10.3	6.6	4.4	3.4	72.6	24.1	3.4	
▲	10	2016-145	100.0	100.0	82.6	45.6	35.1	23.5	19.0	13.4	10.7	8.8	7.2	5.6	4.6	4.1	86.6	9.3	4.1	

Silt	Sand			Gravel	
	Fine	Medium	Coarse	Fine	Coarse



GRAIN SIZE ANALYSIS	Gravel Exploration	SOURCE/TP#: 892-5645
Arctic Backhoe	Km 128 RHS	PROJECT NO: 552-202955-5206-1
CAT Excavator 315D	Coordinates:Z8N N6691457m E512242m	ELEVATION: 752m

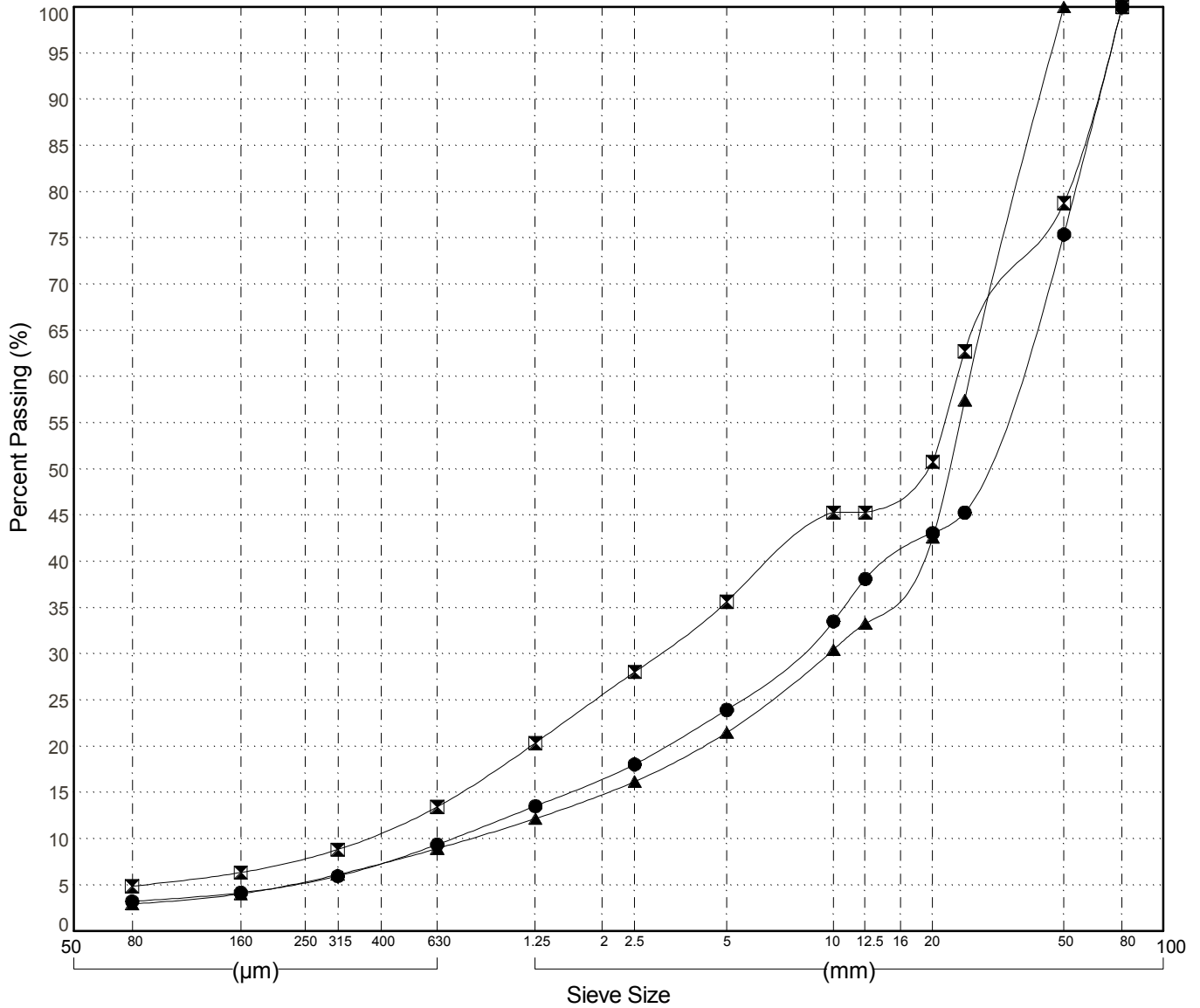
Master Revised June 2017

Field #	Lab #	Depth	Classification	%H2O	LL	PL	PI	Cc	Cu	D10
● 11	2016-146	0.2 to 0.6	WELL-GRADED GRAVEL with SAND(GW)	1.0	NP	NP	NP	2.4	50.2	0.699
☒ 12	2016-147	2.0 to 2.4	POORLY GRADED GRAVEL with SAND(GP)	1.2	NP	NP	NP	1.0	63.3	0.375
▲ 13	2016-148	3.2 to 3.6	POORLY GRADED GRAVEL with SAND(GP)	0.9	NP	NP	NP	4.5	33.1	0.788

Field #	Lab #	% PASSING	Sieve Size (mm)											% Breakdown				
			100.0	80.0	50.0	25.0	20.0	12.5	10.0	5.0	2.5	1.25	0.630	0.315	0.160	0.080	Gravel	Sand
● 11	2016-146	100.0	100.0	75.4	45.3	43.1	38.1	33.5	23.9	18.1	13.5	9.4	6.0	4.2	3.2	76.1	20.7	3.2
☒ 12	2016-147	100.0	100.0	78.8	62.8	50.8	45.3	45.3	35.6	28.1	20.4	13.4	8.8	6.4	4.9	64.4	30.8	4.9
▲ 13	2016-148	100.0	100.0	100.0	57.5	42.6	33.3	30.5	21.5	16.2	12.2	8.9	6.1	4.0	2.9	78.5	18.5	2.9

Silt	Sand			Gravel	
	Fine	Medium	Coarse	Fine	Coarse





GRAIN SIZE ANALYSIS	Gravel Exploration	SOURCE/TP#: 892-5647
Arctic Backhoe	Km 128 RHS	PROJECT NO: 552-202955-5206-1
CAT Excavator 315D	Coordinates:Z8N N6691564m E512142m	ELEVATION: 736m

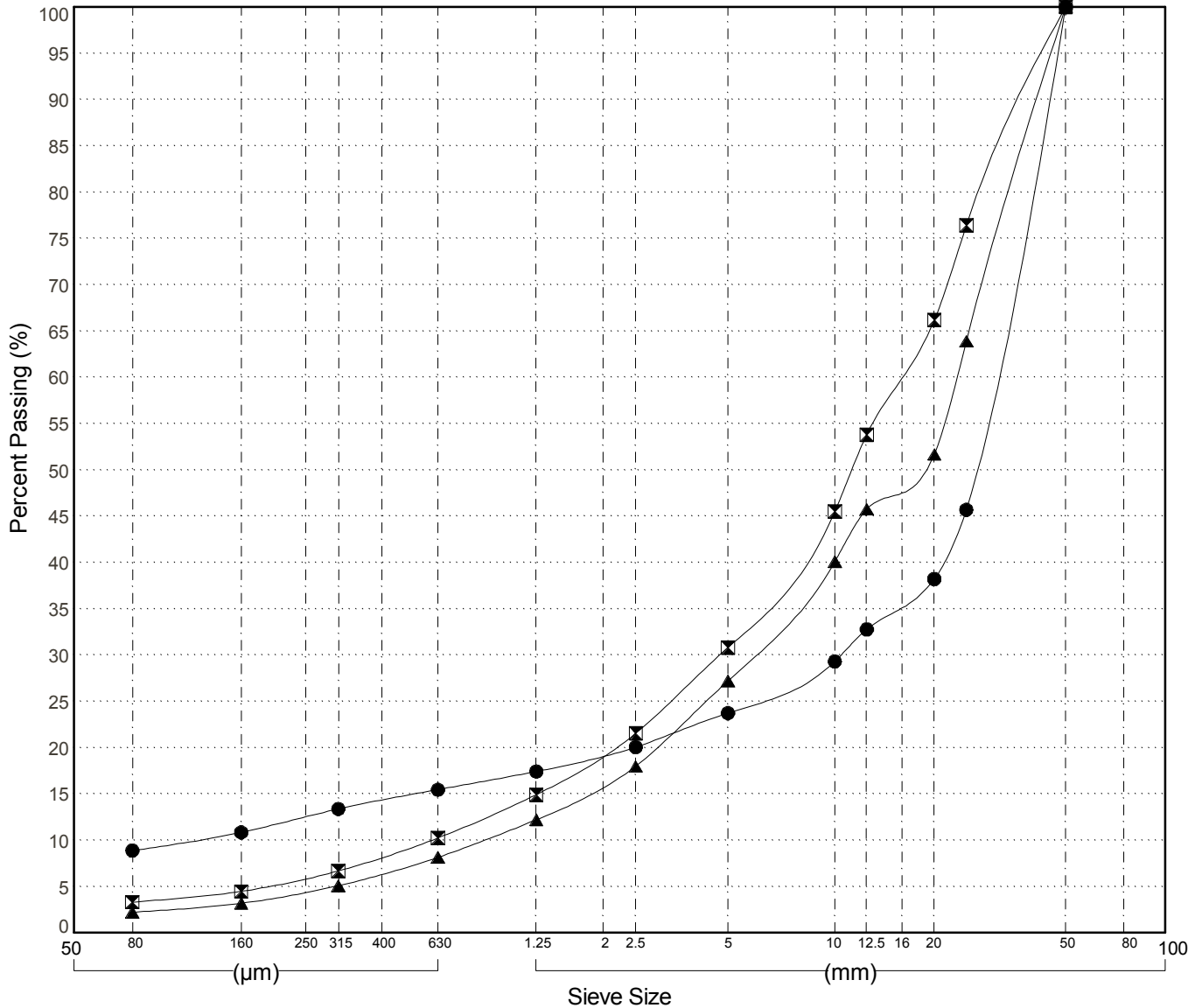
Master Revised June 2017

Field #	Lab #	Depth	Classification	%H2O	LL	PL	PI	Cc	Cu	D10
● 17	2016-152	0.3 to 0.6	POORLY GRADED GRAVEL with SILT(GP-GM)	2.7	NP	NP	NP	31.6	260.6	0.115
☒ 18	2016-153	1.4 to 1.8	WELL-GRADED GRAVEL with SAND(GW)	1.6	NP	NP	NP	2.1	26.3	0.601
▲ 19	2016-154	3.0 to 3.4	WELL-GRADED GRAVEL with SAND(GW)	1.2	NP	NP	NP	1.6	27.1	0.861

Field #	Lab #	% PASSING															% Breakdown			
			100.0	80.0	50.0	25.0	20.0	12.5	10.0	5.0	2.5	1.25	0.630	0.315	0.160	0.080	Gravel	Sand	Silt	Clay
●	17	2016-152	100.0	100.0	100.0	45.7	38.2	32.8	29.3	23.7	20.1	17.4	15.5	13.4	10.9	8.9	76.3	14.8	8.9	
☒	18	2016-153	100.0	100.0	100.0	76.4	66.2	53.8	45.5	30.8	21.5	14.9	10.2	6.7	4.5	3.3	69.2	27.5	3.3	
▲	19	2016-154	100.0	100.0	100.0	63.9	51.7	45.7	40.1	27.2	18.0	12.2	8.2	5.1	3.2	2.2	72.8	25.0	2.2	

Silt	Sand			Gravel	
	Fine	Medium	Coarse	Fine	Coarse

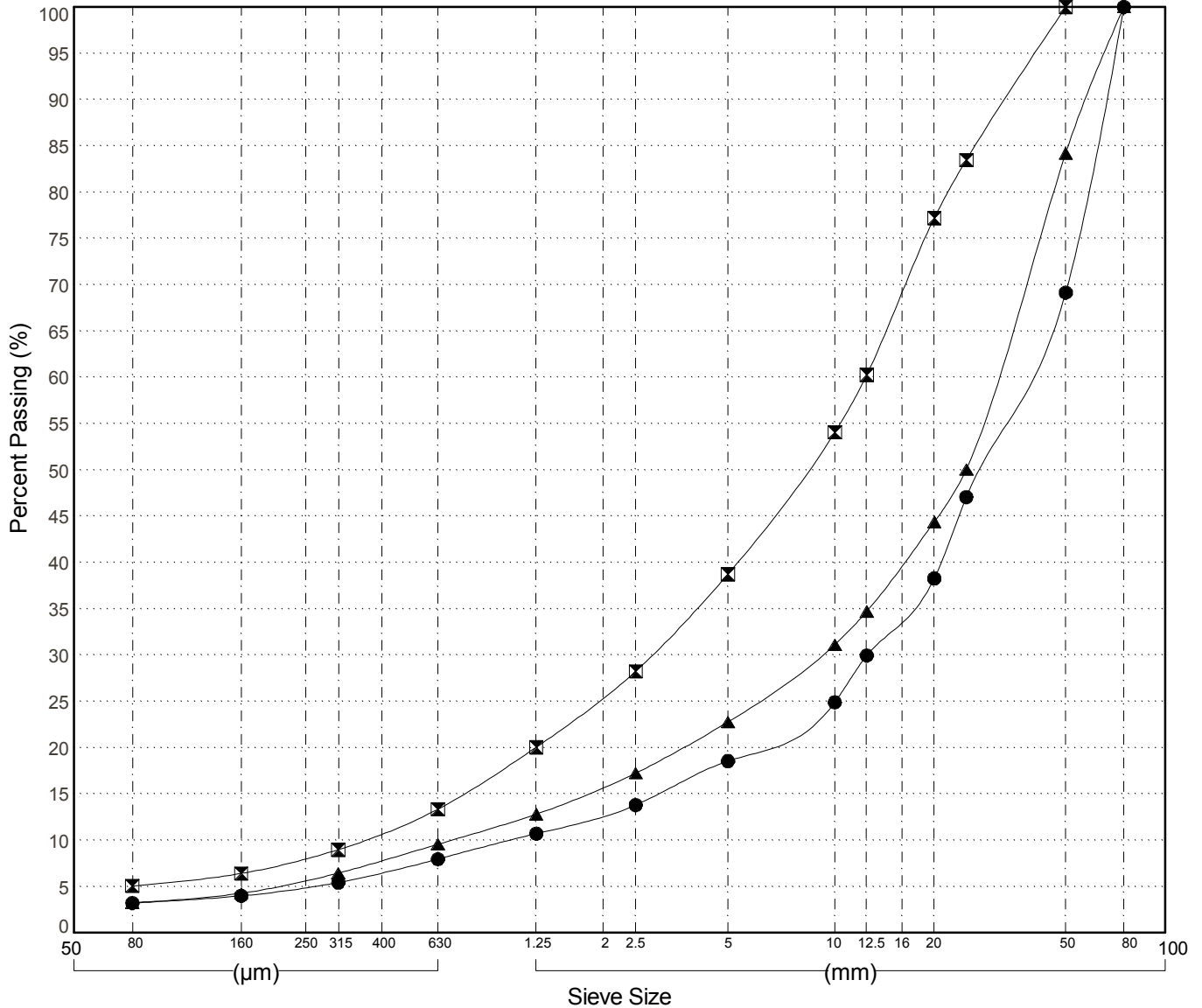


GRAIN SIZE ANALYSIS	Gravel Exploration	SOURCE/TP#: 892-5648
Arctic Backhoe	Km 128 RHS	PROJECT NO: 552-202955-5206-1
CAT Excavator 315D	Coordinates:Z8N N6691556m E512243m	ELEVATION: 747m

Master Revised June 2017

Field #	Lab #	Depth	Classification	%H2O	LL	PL	PI	Cc	Cu	D10								
● 20	2016-155	0.2 to 0.4	POORLY GRADED GRAVEL with SAND(GP)	0.7	NP	NP	NP	4.0	35.9	1.046								
☒ 21	2016-156	1.8 to 2.4	WELL-GRADED GRAVEL with SILT and SAND(GW-GM)	2.0	NP	NP	NP	1.7	33.5	0.370								
▲ 22	2016-157	3.2 to 3.6	POORLY GRADED GRAVEL with SAND(GP)	1.3	NP	NP	NP	3.9	44.3	0.690								
Field #	Lab #	100.0	80.0	50.0	25.0	20.0	12.5	10.0	5.0	2.5	1.25	0.630	0.315	0.160	0.080	%Breakdown		
●	20	100.0	100.0	69.1	47.1	38.3	29.9	24.9	18.6	13.8	10.7	8.0	5.4	4.0	3.2	Gravel	Sand	Clay
☒	21	100.0	100.0	100.0	83.5	77.2	60.3	54.1	38.7	28.2	20.0	13.4	9.0	6.4	5.1	61.3	33.7	5.1
▲	22	100.0	100.0	84.2	50.1	44.4	34.7	31.1	22.8	17.3	12.8	9.6	6.5	4.3	3.3	77.2	19.5	3.3

Silt	Sand			Gravel	
	Fine	Medium	Coarse	Fine	Coarse



GRAIN SIZE ANALYSIS	Gravel Exploration	SOURCE/TP#: 892-5649
Arctic Backhoe	Km 128 RHS	PROJECT NO: 552-202955-5206-1
CAT Excavator 315D	Coordinates:Z8N N6691556m E512344m	ELEVATION: 756m

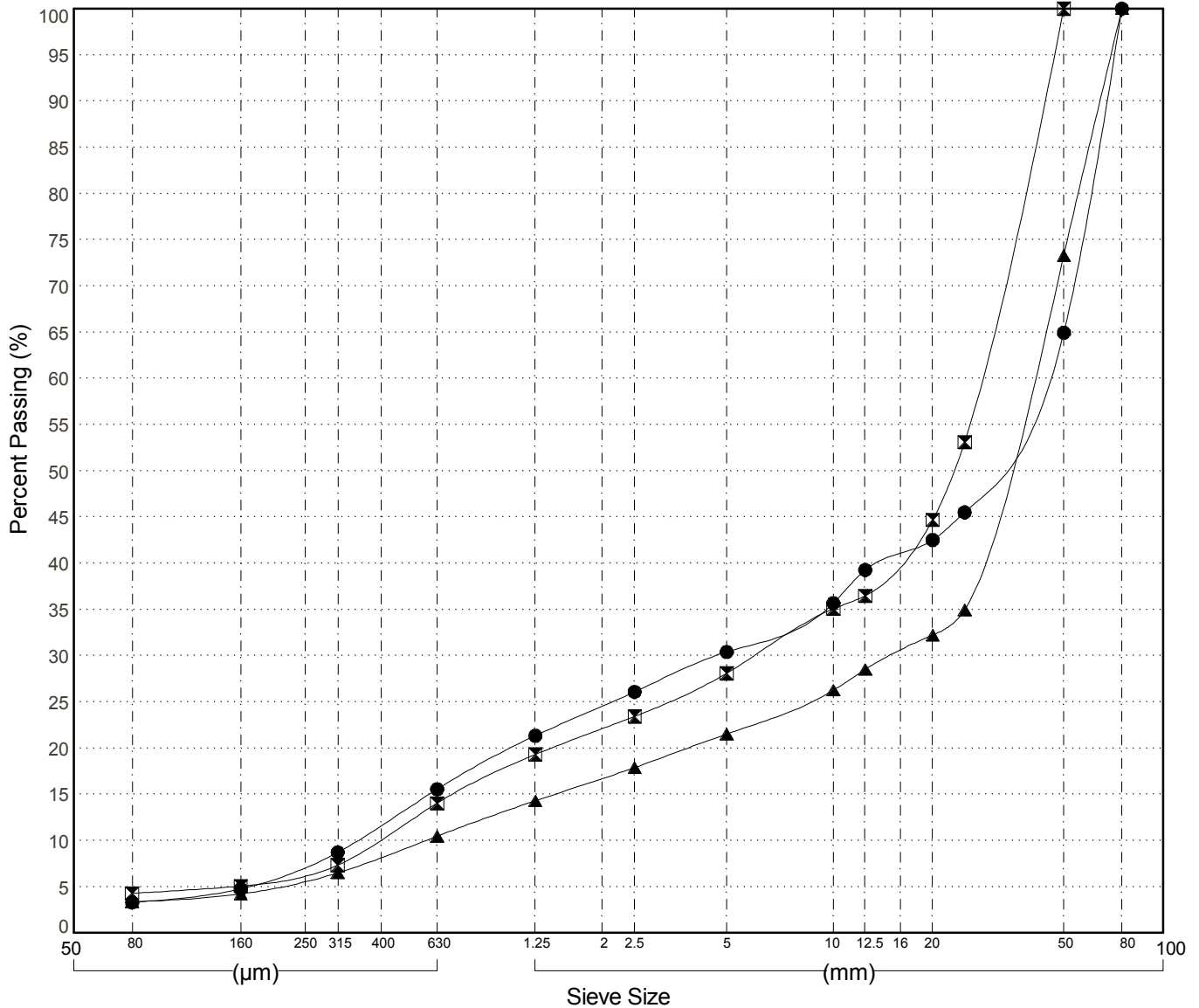
Master Revised June 2017

Field #	Lab #	Depth	Classification	%H2O	LL	PL	PI	Cc	Cu	D10
● 23	2016-158	0.2 to 0.6	WELL-GRADED GRAVEL with SAND(GW)	1.8	NP	NP	NP	1.3	116.9	0.358
☒ 24	2016-159	2.0 to 2.4	WELL-GRADED GRAVEL with SAND(GW)	1.5	NP	NP	NP	3.0	66.7	0.415
▲ 25	2016-160	3.2 to 3.6	POORLY GRADED GRAVEL with SAND(GP)	1.7	NP	NP	NP	9.9	67.7	0.581

Field #	Lab #	% PASSING														% Breakdown				
			100.0	80.0	50.0	25.0	20.0	12.5	10.0	5.0	2.5	1.25	0.630	0.315	0.160	0.080	Gravel	Sand	Silt	Clay
●	23	2016-158	100.0	100.0	64.9	45.5	42.5	39.3	35.7	30.4	26.1	21.3	15.5	8.7	4.8	3.3	69.6	27.1	3.3	
☒	24	2016-159	100.0	100.0	100.0	53.1	44.7	36.5	35.1	28.1	23.4	19.3	14.0	7.3	5.1	4.3	71.9	23.8	4.3	
▲	25	2016-160	100.0	100.0	73.3	35.0	32.2	28.5	26.3	21.5	17.9	14.3	10.5	6.5	4.2	3.4	78.5	18.2	3.4	

Silt	Sand			Gravel	
	Fine	Medium	Coarse	Fine	Coarse



GRAIN SIZE ANALYSIS	Gravel Exploration	SOURCE/TP#: 892-5650
Arctic Backhoe	Km 128 RHS	PROJECT NO: 552-202955-5206-1
CAT Excavator 315D	Coordinates:Z8N N6691655m E512145m	ELEVATION: 724m

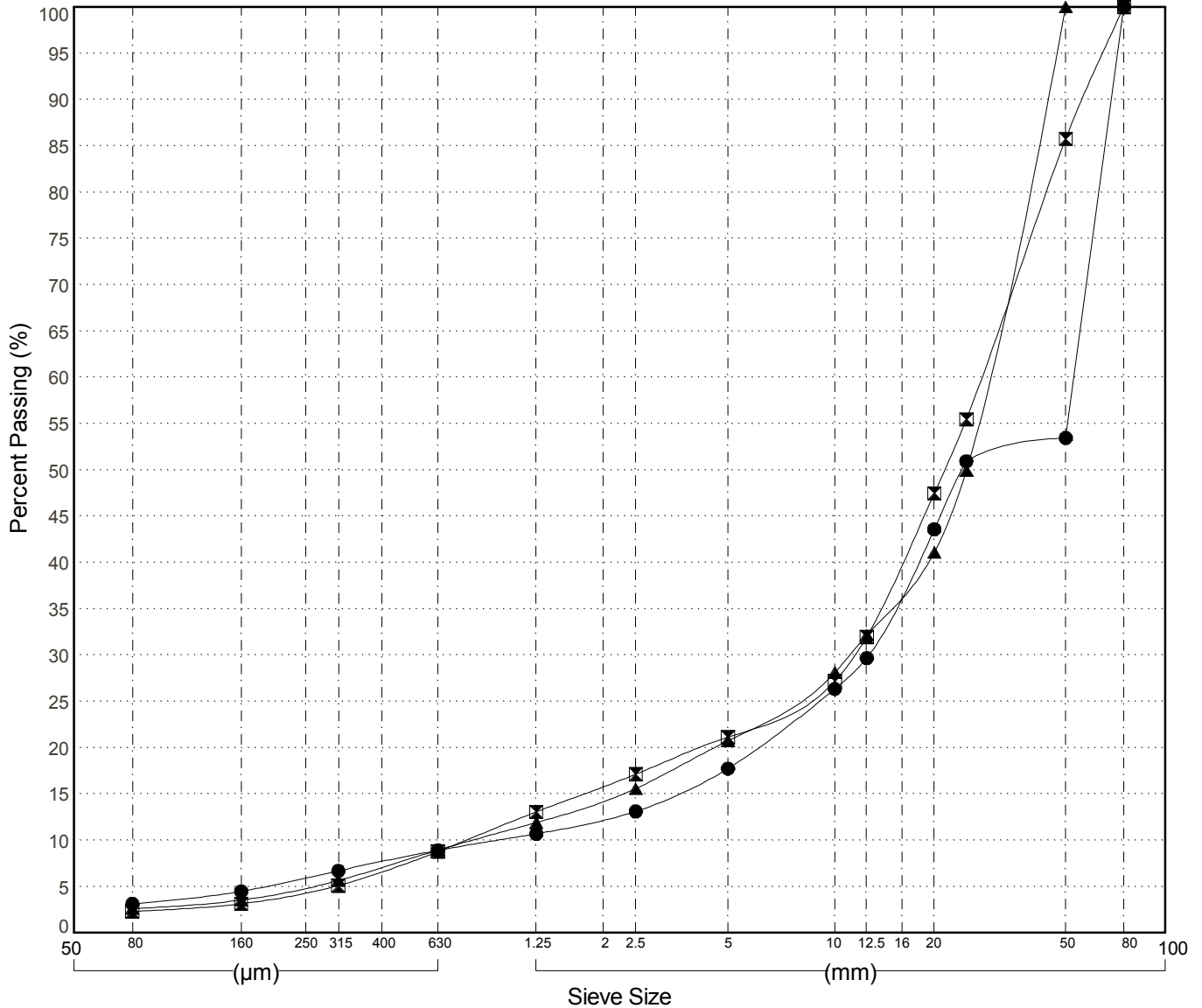
Master Revised June 2017

Field #	Lab #	Depth	Classification	%H2O	LL	PL	PI	Cc	Cu	D10
● 26	2016-161	0.3 to 0.6	POORLY GRADED GRAVEL(GP)	1.2	NP	NP	NP	3.2	55.3	0.957
☒ 27	2016-162	1.6 to 2.0	POORLY GRADED GRAVEL with SAND(GP)	1.4	NP	NP	NP	6.1	36.2	0.766
▲ 28	2016-163	3.2 to 3.6	POORLY GRADED GRAVEL with SAND(GP)	1.5	NP	NP	NP	5.3	35.6	0.807

Field #	Lab #	% PASSING														% Breakdown			
			100.0	80.0	50.0	25.0	20.0	12.5	10.0	5.0	2.5	1.25	0.630	0.315	0.160	0.080	Gravel	Sand	Silt
●	26	2016-161	100.0	100.0	53.5	50.9	43.6	29.7	26.3	17.7	13.1	10.7	8.9	6.7	4.5	3.1	82.3	14.6	3.1
☒	27	2016-162	100.0	100.0	85.7	55.5	47.5	32.0	27.2	21.1	17.1	13.1	8.8	5.1	3.1	2.3	78.9	18.8	2.3
▲	28	2016-163	100.0	100.0	100.0	49.9	41.1	32.2	28.1	20.7	15.6	11.9	8.9	5.7	3.5	2.6	79.3	18.1	2.6

Silt	Sand			Gravel	
	Fine	Medium	Coarse	Fine	Coarse



GRAIN SIZE ANALYSIS	Gravel Exploration	SOURCE/TP#: 892-5651
Arctic Backhoe	Km 128 RHS	PROJECT NO: 552-202955-5206-1
CAT Excavator 315D	Coordinates:Z8N N6691656m E512244m	ELEVATION: 734m

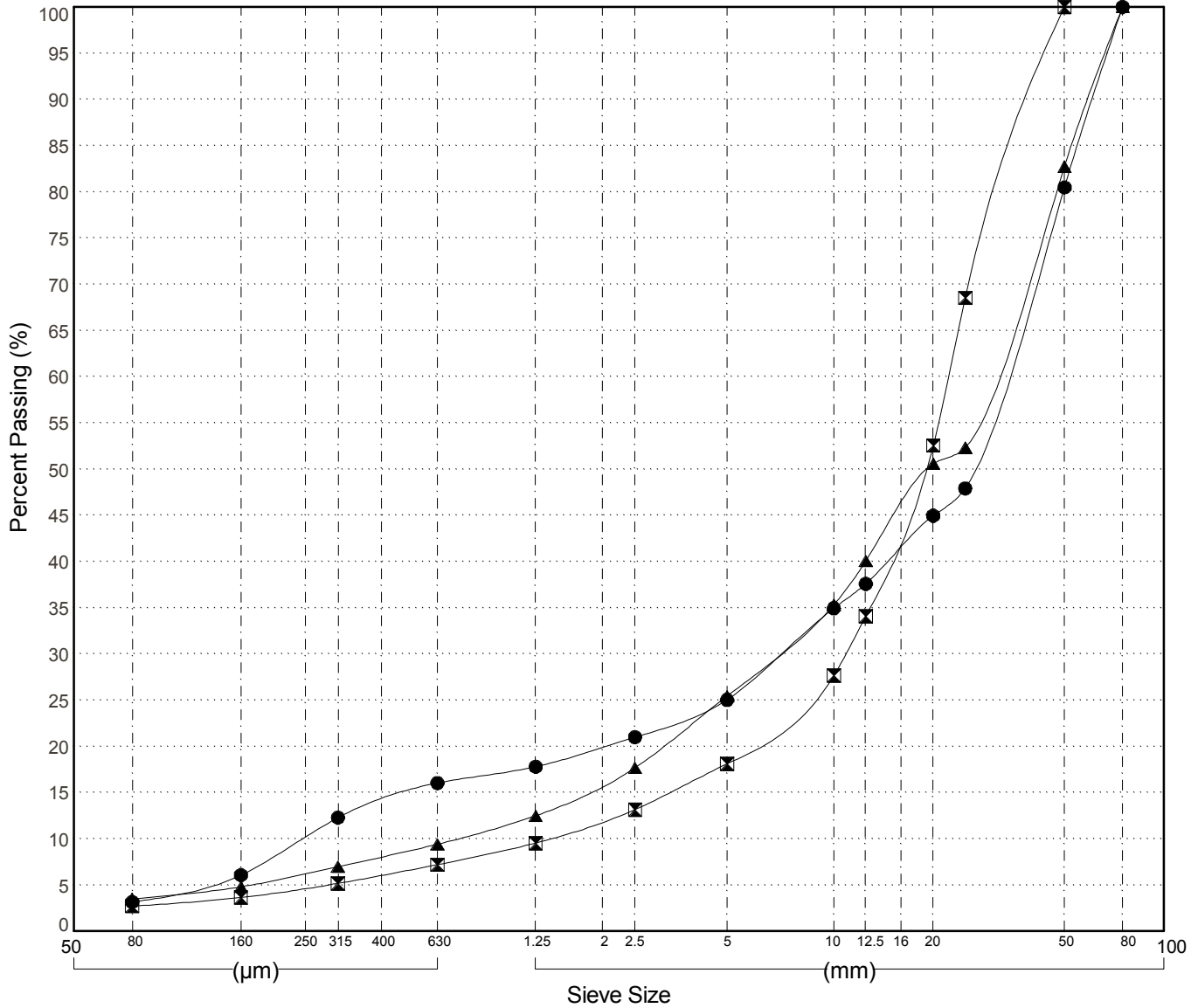
Master Revised June 2017

Field #	Lab #	Depth	Classification	%H2O	LL	PL	PI	Cc	Cu	D10
● 29	2016-164	0.6 to 1.0	POORLY GRADED GRAVEL with SAND(GP)	1.1	NP	NP	NP	6.0	131.8	0.245
☒ 30	2016-165	2.2 to 2.6	POORLY GRADED GRAVEL with SAND(GP)	0.8	NP	NP	NP	3.9	16.2	1.366
▲ 31	2016-166	3.2 to 3.6	WELL-GRADED GRAVEL with SAND(GW)	1.2	NP	NP	NP	2.1	41.4	0.719

Field #	Lab #	% PASSING														% Breakdown				
			100.0	80.0	50.0	25.0	20.0	12.5	10.0	5.0	2.5	1.25	0.630	0.315	0.160	0.080	Gravel	Sand	Silt	Clay
●	29	2016-164	100.0	100.0	80.5	47.9	45.0	37.6	34.9	25.0	21.0	17.8	16.0	12.3	6.1	3.2	75.0	21.9		3.2
☒	30	2016-165	100.0	100.0	100.0	68.5	52.5	34.1	27.7	18.1	13.2	9.5	7.2	5.2	3.6	2.7	81.9	15.4		2.7
▲	31	2016-166	100.0	100.0	82.7	52.3	50.6	40.0	35.3	25.4	17.7	12.5	9.4	7.0	4.8	3.5	74.6	21.9		3.5

Silt	Sand			Gravel	
	Fine	Medium	Coarse	Fine	Coarse



GRAIN SIZE ANALYSIS	Gravel Exploration	SOURCE/TP#: 892-5652
Arctic Backhoe	Km 128 RHS	PROJECT NO: 552-202955-5206-1
CAT Excavator 315D	Coordinates:Z8N N6691654m E512343m	ELEVATION: 732m

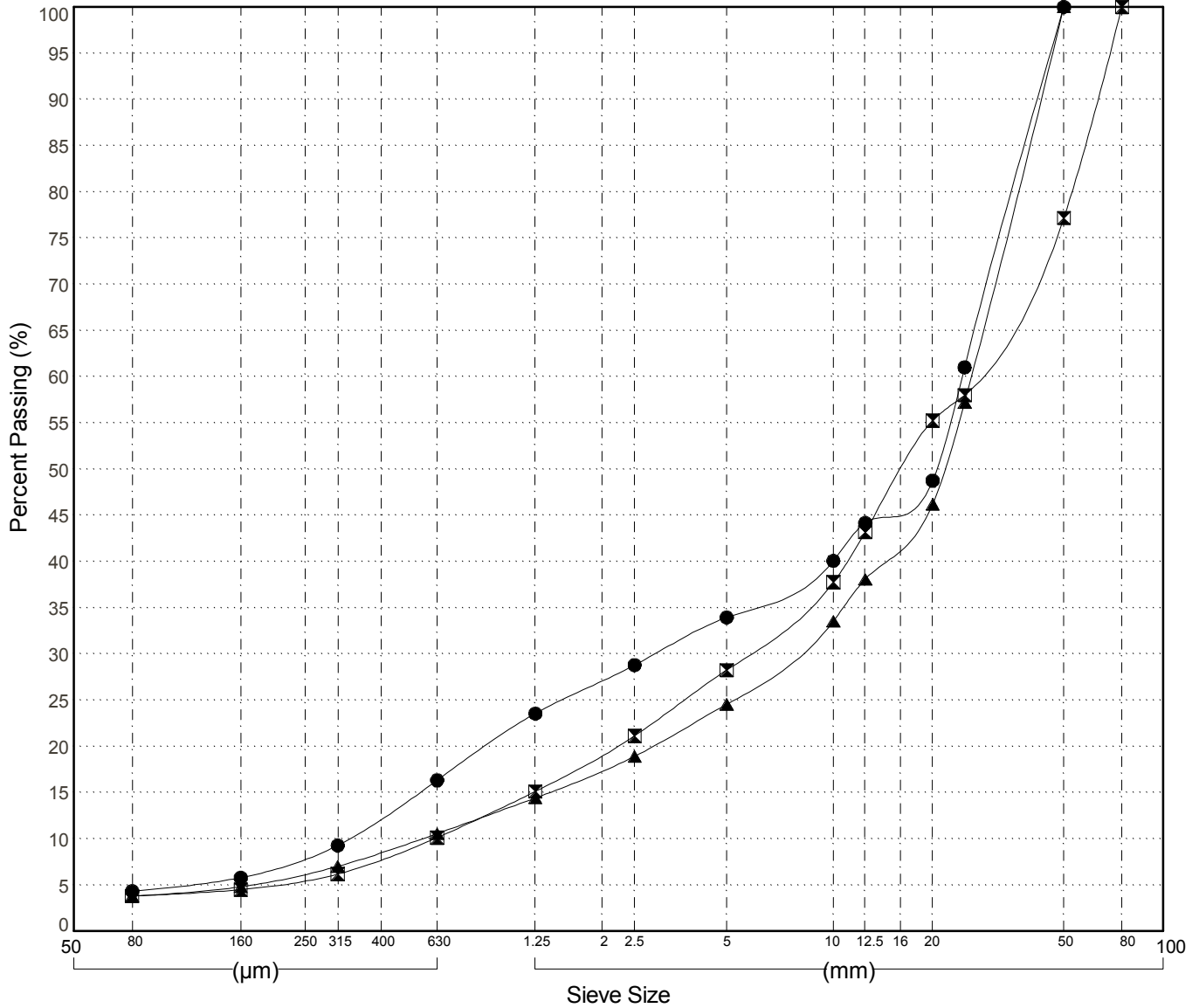
Master Revised June 2017

Field #	Lab #	Depth	Classification	%H2O	LL	PL	PI	Cc	Cu	D10
● 32	2016-167	0.2 to 0.6	WELL-GRADED GRAVEL with SAND(GW)	2.4	NP	NP	NP	1.0	72.6	0.338
☒ 33	2016-168	1.2 to 1.6	WELL-GRADED GRAVEL with SAND(GW)	1.9	NP	NP	NP	1.8	43.6	0.617
▲ 34	2016-169	3.4 to 3.8	POORLY GRADED GRAVEL with SAND(GP)	1.6	NP	NP	NP	3.8	46.3	0.565

Field #	Lab #	% PASSING														% Breakdown				
			100.0	80.0	50.0	25.0	20.0	12.5	10.0	5.0	2.5	1.25	0.630	0.315	0.160	0.080	Gravel	Sand	Silt	Clay
●	32	2016-167	100.0	100.0	100.0	61.0	48.7	44.2	40.1	33.9	28.8	23.5	16.3	9.3	5.8	4.3	66.1	29.6	4.3	
☒	33	2016-168	100.0	100.0	77.2	58.0	55.2	43.2	37.7	28.2	21.1	15.1	10.1	6.2	4.5	3.8	71.8	24.4	3.8	
▲	34	2016-169	100.0	100.0	100.0	57.2	46.2	38.1	33.5	24.5	18.9	14.4	10.6	7.0	4.8	3.8	75.5	20.7	3.8	

Silt	Sand			Gravel	
	Fine	Medium	Coarse	Fine	Coarse



GRAIN SIZE ANALYSIS	Gravel Exploration	SOURCE/TP#: 892-5653
Arctic Backhoe	Km 128 RHS	PROJECT NO: 552-202955-5206-1
CAT Excavator 315D	Coordinates:Z8N N6691751m E512141m	ELEVATION: 716m

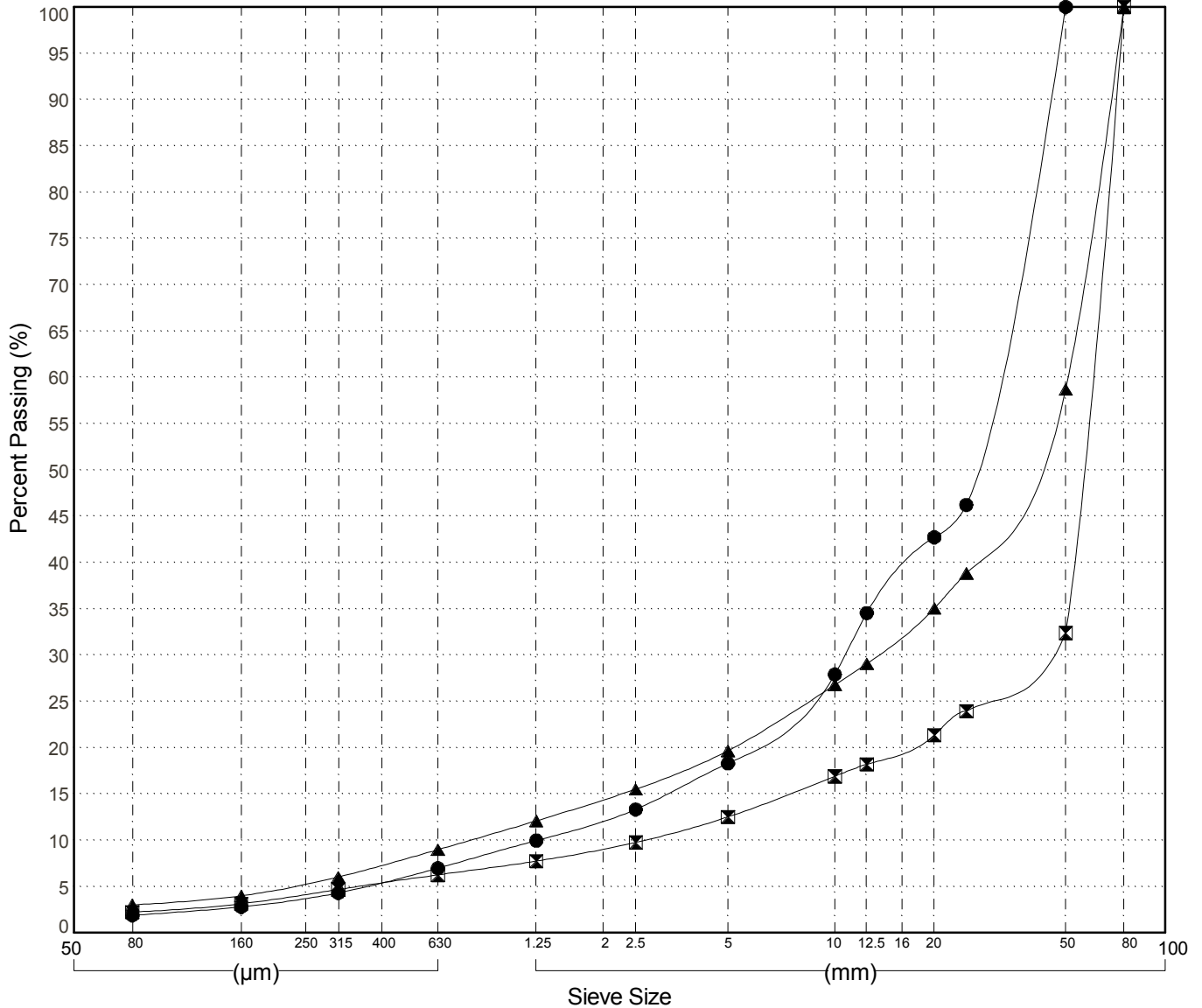
Master Revised June 2017

Field #	Lab #	Depth	Classification	%H2O	LL	PL	PI	Cc	Cu	D10
● 35	2016-170	0.3 to 0.7	POORLY GRADED GRAVEL with SAND(GP)	0.9	NP	NP	NP	3.1	23.8	1.257
☒ 36	2016-171	2.0 to 2.4	POORLY GRADED GRAVEL(GP)	0.5	NP	NP	NP	10.9	22.3	2.641
▲ 37	2016-172	3.2 to 3.6	POORLY GRADED GRAVEL with SAND(GP)	1.2	NP	NP	NP	4.5	64.2	0.789

Field #	Lab #	% PASSING														% Breakdown			
			100.0	80.0	50.0	25.0	20.0	12.5	10.0	5.0	2.5	1.25	0.630	0.315	0.160	0.080	Gravel	Sand	Silt
●	35	2016-170	100.0	100.0	100.0	46.2	42.7	34.5	27.9	18.3	13.3	10.0	7.0	4.3	2.8	1.9	81.7	16.4	1.9
☒	36	2016-171	100.0	100.0	32.4	23.9	21.3	18.2	16.9	12.5	9.8	7.8	6.3	4.7	3.1	2.2	87.5	10.3	2.2
▲	37	2016-172	100.0	100.0	58.7	38.8	35.0	29.1	26.8	19.7	15.5	12.1	9.0	6.0	4.0	3.0	80.3	16.6	3.0

Silt	Sand			Gravel	
	Fine	Medium	Coarse	Fine	Coarse



GRAIN SIZE ANALYSIS	Gravel Exploration	SOURCE/TP#: 892-5654
Arctic Backhoe	Km 128 RHS	PROJECT NO: 552-202955-5206-1
CAT Excavator 315D	Coordinates:Z8N N6691756m E512246m	ELEVATION: 719m

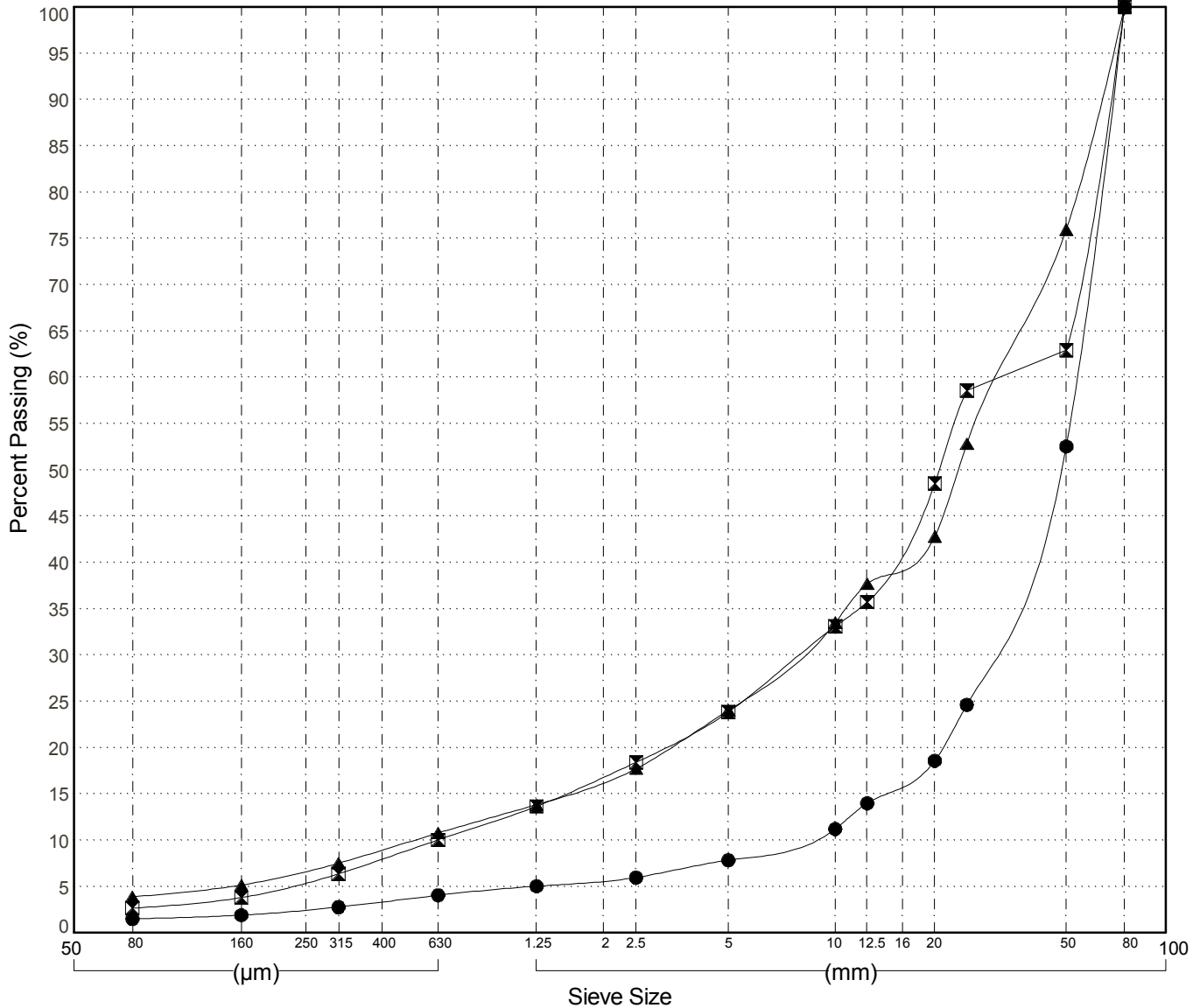
Master Revised June 2017

Field #	Lab #	Depth	Classification	%H2O	LL	PL	PI	Cc	Cu	D10
● 38	2016-173	0.3 to 0.6	WELL-GRADED GRAVEL(GW)	0.8	NP	NP	NP	2.0	7.0	7.634
☒ 39	2016-174	2.2 to 2.6	POORLY GRADED GRAVEL with SAND(GP)	1.1	NP	NP	NP	3.1	50.2	0.625
▲ 40	2016-175	3.4 to 3.8	POORLY GRADED GRAVEL with SAND(GP)	1.6	NP	NP	NP	3.5	58.1	0.534

Field #	Lab #	% PASSING	Sieve Size (mm)													% Breakdown				
			100.0	80.0	50.0	25.0	20.0	12.5	10.0	5.0	2.5	1.25	0.630	0.315	0.160	0.080	Gravel	Sand	Silt	Clay
●	38	2016-173	100.0	100.0	52.5	24.6	18.6	14.0	11.2	7.8	6.0	5.0	4.1	2.8	1.9	1.5	92.2	6.3	1.5	
☒	39	2016-174	100.0	100.0	62.9	58.6	48.5	35.7	33.1	23.8	18.4	13.7	10.0	6.4	3.8	2.7	76.2	21.2	2.7	
▲	40	2016-175	100.0	100.0	76.0	52.8	42.8	37.7	33.5	24.0	17.7	13.8	10.8	7.5	5.2	3.9	76.0	20.1	3.9	

Silt	Sand			Gravel	
	Fine	Medium	Coarse	Fine	Coarse



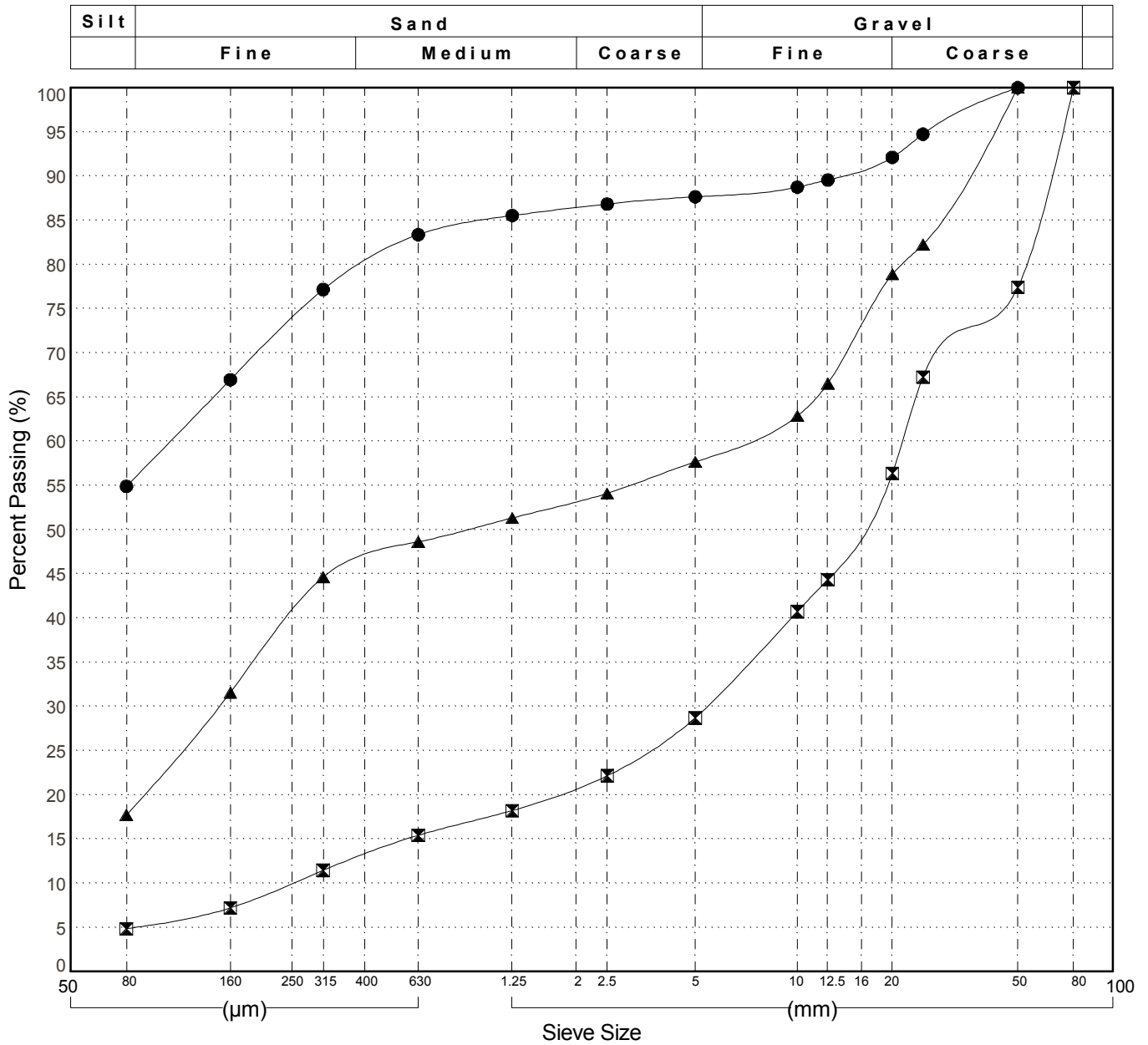
GRAIN SIZE ANALYSIS	Gravel Exploration	SOURCE/TP#: 892-5655
Arctic Backhoe	Km 128 RHS	PROJECT NO: 552-202955-5206-1
CAT Excavator 315D	Coordinates:Z8N N6691753m E512344m	ELEVATION: 732m

Master Revised June 2017

Field #	Lab #	Depth	Classification	%H2O	LL	PL	PI	Cc	Cu	D10
● 41	2016-176	0.3 to 0.6	SANDY SILT (ML)	5.8	NP	NP	NP			
☒ 42	2016-177	1.6 to 2.0	POORLY GRADED GRAVEL with SAND (GP)	1.2	NP	NP	NP	4.9	86.2	0.250
▲ 43	2016-178	3.2 to 3.6	SILTY GRAVEL with SAND (GM)	4.2	NP	NP	NP			

Field #	Lab #	100.0	80.0	50.0	25.0	20.0	12.5	10.0	5.0	2.5	1.25	0.630	0.315	0.160	0.080	% Breakdown			
																Gravel	Sand	Silt	Clay
● 41	2016-176	100.0	100.0	100.0	94.7	92.1	89.6	88.7	87.6	86.8	85.5	83.4	77.2	67.0	54.9	12.4	32.7	54.9	
☒ 42	2016-177	100.0	100.0	77.4	67.3	56.4	44.3	40.7	28.7	22.2	18.2	15.4	11.4	7.2	4.8	71.3	23.9	4.8	
▲ 43	2016-178	100.0	100.0	100.0	82.2	78.9	66.5	62.9	57.7	54.1	51.3	48.6	44.6	31.6	17.7	42.3	39.9	17.7	



GRAIN SIZE ANALYSIS	Gravel Exploration	SOURCE/TP#: 892-5656
Arctic Backhoe	Km 128 RHS	PROJECT NO: 552-202955-5206-1
CAT Excavator 315D	Coordinates:Z8N N6691355m E512113m	ELEVATION: 741m

Master Revised June 2017

Field #	Lab #	Depth	Classification	%H2O	LL	PL	PI	Cc	Cu	D10
● 44	2016-179	0.2 to 0.6	POORLY GRADED GRAVEL with SILT and SAND(GP-GM)	1.4	NP	NP	NP	6.3	155.3	0.188
☒ 45	2016-180	1.6 to 2.0	POORLY GRADED GRAVEL with SAND(GP)	1.5	NP	NP	NP	3.6	40.3	0.716
▲ 46	2016-181	3.0 to 3.4	WELL-GRADED GRAVEL with SAND(GW)	1.2	NP	NP	NP	3.0	41.3	0.656

Field #	Lab #	% PASSING														% Breakdown				
			100.0	80.0	50.0	25.0	20.0	12.5	10.0	5.0	2.5	1.25	0.630	0.315	0.160	0.080	Gravel	Sand	Silt	Clay
● 44	2016-179	100.0	100.0	100.0	100.0	48.4	43.5	38.5	35.2	27.9	24.5	20.4	15.8	11.6	9.5	8.0	72.1	19.8	8.0	
☒ 45	2016-180	100.0	100.0	85.8	53.3	45.4	36.5	31.6	23.6	17.9	13.5	9.2	5.5	3.8	3.0	76.4	20.6	3.0		
▲ 46	2016-181	100.0	100.0	100.0	54.7	45.1	38.1	33.9	24.8	19.3	14.6	9.7	5.6	3.7	3.0	75.2	21.8	3.0		

Silt	Sand			Gravel	
	Fine	Medium	Coarse	Fine	Coarse

