

SUBSURFACE EXPLORATION AND TEST REPORT Campbell Highway SOURCE/TP#: 897-5702

Simpson Creek Valley, km 77.5-78.5 LHS PROJECT NO: 552-202104-0661-5

B61 150mm Coordinates: Z09V N6723351m E489324m ELEVATION: 626m

SAMPLE TYPE UNDISTURBED DCPT AUGER BULK SPT CORE

ELEV. (m)	<div style="text-align: center;"> PLASTIC M.C LIQUID 0 20 40 60 80 100 </div>	★ Percent Fines★ ◆ Percent Sand◆ ■ Percent Gravel■			Sample Type	Sample #	SOIL SYMBOL	DCPT/SPT Blows/30cm	SOIL DESCRIPTION	Depth (m)	
		0	20	40	60	80	100	0	20	40	60
615									-No resistance to down-pressure -Contractor refuses SPT - concern for heaving	11	
614									-No resistance to down-pressure -Contractor refuses SPT - concern for heaving	12	
613									-No resistance to down-pressure -Contractor refuses SPT - concern for heaving	13	
612									-No resistance to down-pressure -Contractor refuses SPT - concern for heaving	14	
611									-No resistance to down-pressure -Contractor refuses SPT - concern for heaving	15	
610									-No resistance to down-pressure -Contractor refuses SPT - concern for heaving	16	
609									-No resistance to down-pressure -Contractor refuses SPT - concern for heaving	17	
608									-No resistance to down-pressure -Contractor refuses SPT - concern for heaving	18	
607									-No resistance to down-pressure -Contractor refuses SPT - concern for heaving	19	
606									-No resistance to down-pressure -Contractor refuses SPT - concern for heaving		



Highways and Public Works
Transportation Engineering Branch

LOGGED BY: R.Stilwell	Termination Depth: 23m
COMPILED BY: R.Stilwell	Complete: 9/2/2016 10:35:00 AM
REVIEWED BY:	Pit #: Page 2 of 3

SUBSURFACE EXPLORATION AND TEST REPORT		Campbell Highway		SOURCE/TP#: 897-5703				
		Simpson Creek Valley, km 77.5-78.5 LHS		PROJECT NO: 552-202104-0661-5				
B61 150mm		Coordinates: Z09V N6723327m E489327m		ELEVATION: 655m				
SAMPLE TYPE	UNDISTURBED	DCPT	AUGER	BULK	SPT	CORE		
ELEV. (m)	★ Percent Fines★ ◆ Percent Sand◆ ■ Percent Gravel■		Sample Type	Sample #	SOIL SYMBOL	DCPT/SPT Blows/30cm	SOIL DESCRIPTION	Depth (m)
654				093	SP-SM	8	POORLY GRADED SAND with SILT -Brown, loose, damp	1
653								2
652				094	ML	5	SILT -Grey, soft, wet SANDY SILT -Grey, firm, wet	3
651								4
650				095	ML	15		5
649				096	ML	7	SILT -Grey, firm, wet	6
648							SILTY SAND -Grey, compact, wet	7
647				097	SM	7	END of HOLE -Target depth reached	8
646								9
645								



SUBSURFACE EXPLORATION AND TEST REPORT		Campbell Highway		SOURCE/TP#: 897-5705				
		Simpson Creek Valley, km 77.5-78.5 LHS		PROJECT NO: 552-202104-0661-5				
B61 150mm		Coordinates: Z09V N6723480m E489275m		ELEVATION: 655m				
SAMPLE TYPE	<input type="checkbox"/> UNDISTURBED	<input type="checkbox"/> DCPT	<input checked="" type="checkbox"/> AUGER	<input type="checkbox"/> BULK	<input checked="" type="checkbox"/> SPT	<input type="checkbox"/> CORE		
ELEV. (m)	★ Percent Fines★ ◆ Percent Sand◆ ■ Percent Grave■		Sample Type	Sample #	SOIL SYMBOL	DCPT/SPT Blows/30cm	SOIL DESCRIPTION	Depth (m)
	PLASTIC M.C LIQUID 0 20 40 60 80 100							
654				098	ML	9	SILT with SAND -Brown, damp, soft	1
653								2
652				099	ML	10		3
651								4
650				100	ML	9	SILT -Brown, soft, saturated	5
649				101	ML	5		6
648							END of HOLE -Target depth reached	7
647								8
646								9
645								

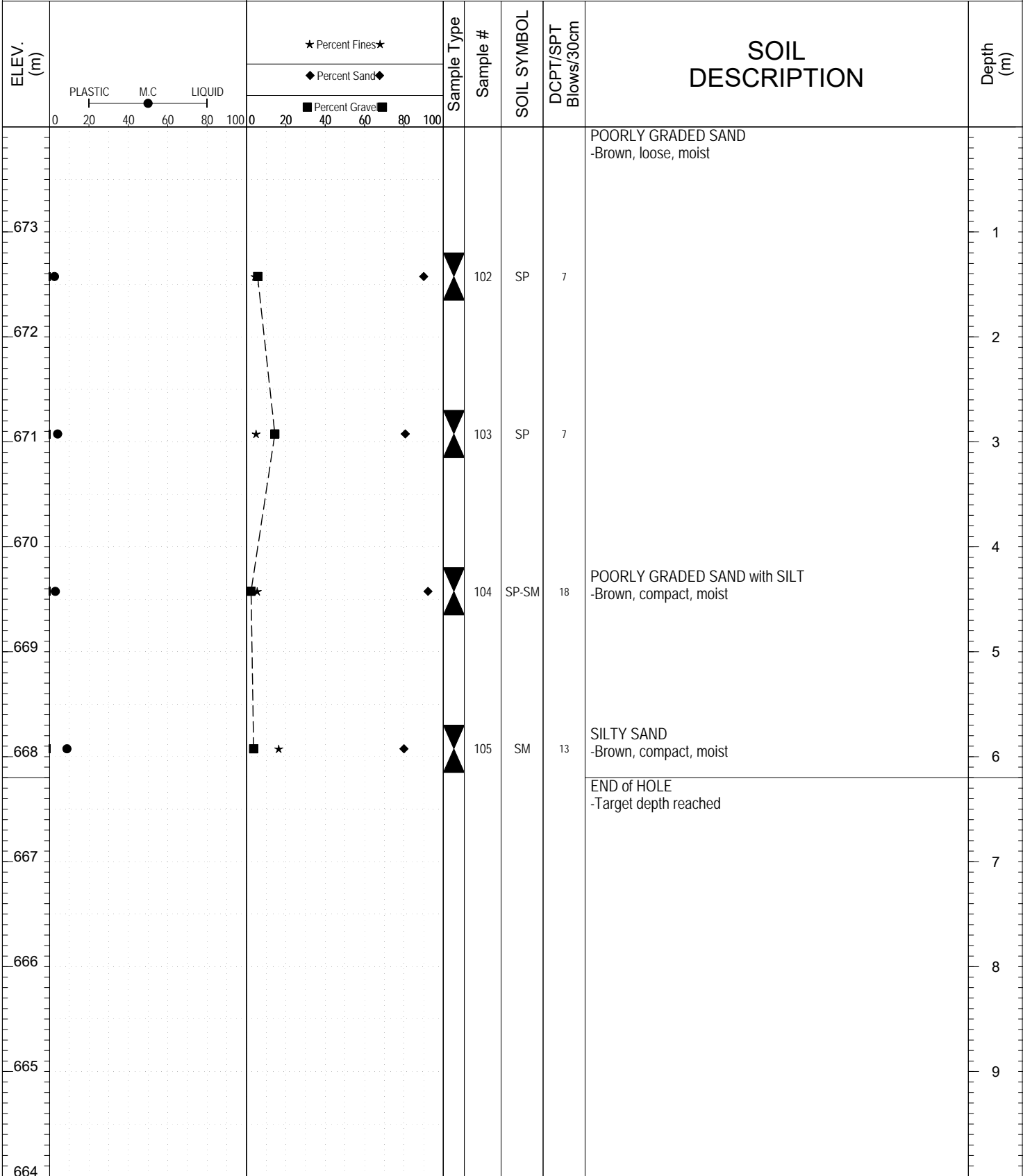


SUBSURFACE EXPLORATION AND TEST REPORT Campbell Highway SOURCE/TP#: 897-5706

Simpson Creek Valley, km 77.5-78.5 LHS PROJECT NO: 552-202104-0661-5

B61 150mm Coordinates: Z09V N6723575m E489283m ELEVATION: 674m

SAMPLE TYPE UNDISTURBED DCPT AUGER BULK SPT CORE



Highways and Public Works
Transportation Engineering Branch

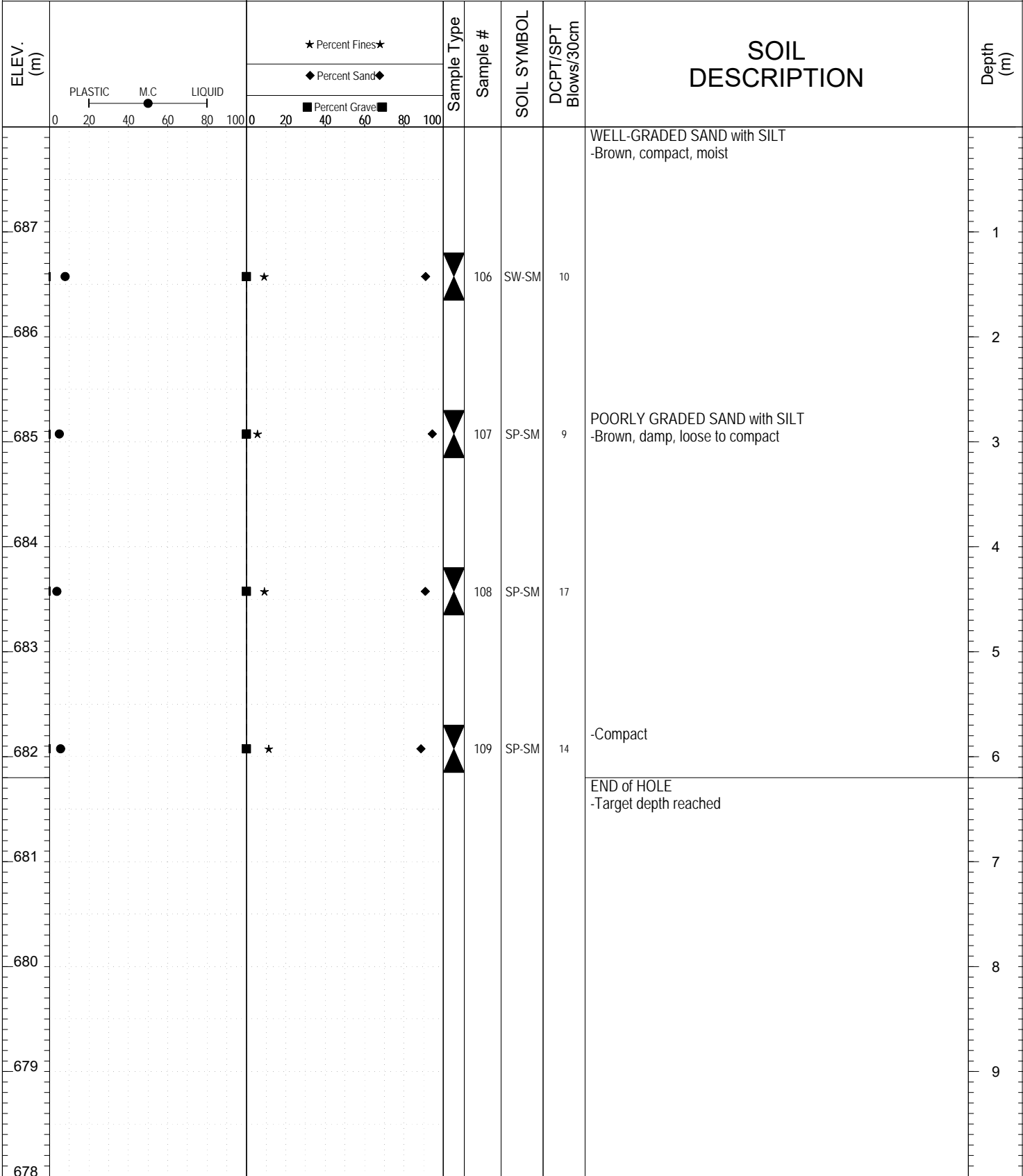
LOGGED BY: R.Stilwell	Termination Depth: 6.2m
COMPILED BY: R.Stilwell	Complete: 9/2/2016 12:45:00 PM
REVIEWED BY:	Pit #: Page 1 of 1

SUBSURFACE EXPLORATION AND TEST REPORT Campbell Highway SOURCE/TP#: 897-5707

Simpson Creek Valley, km 77.5-78.5 LHS PROJECT NO: 552-202104-0661-5

B61 150mm Coordinates: Z09V N6723672m E489302m ELEVATION: 688m

SAMPLE TYPE UNDISTURBED DCPT AUGER BULK SPT CORE



Highways and Public Works
Transportation Engineering Branch

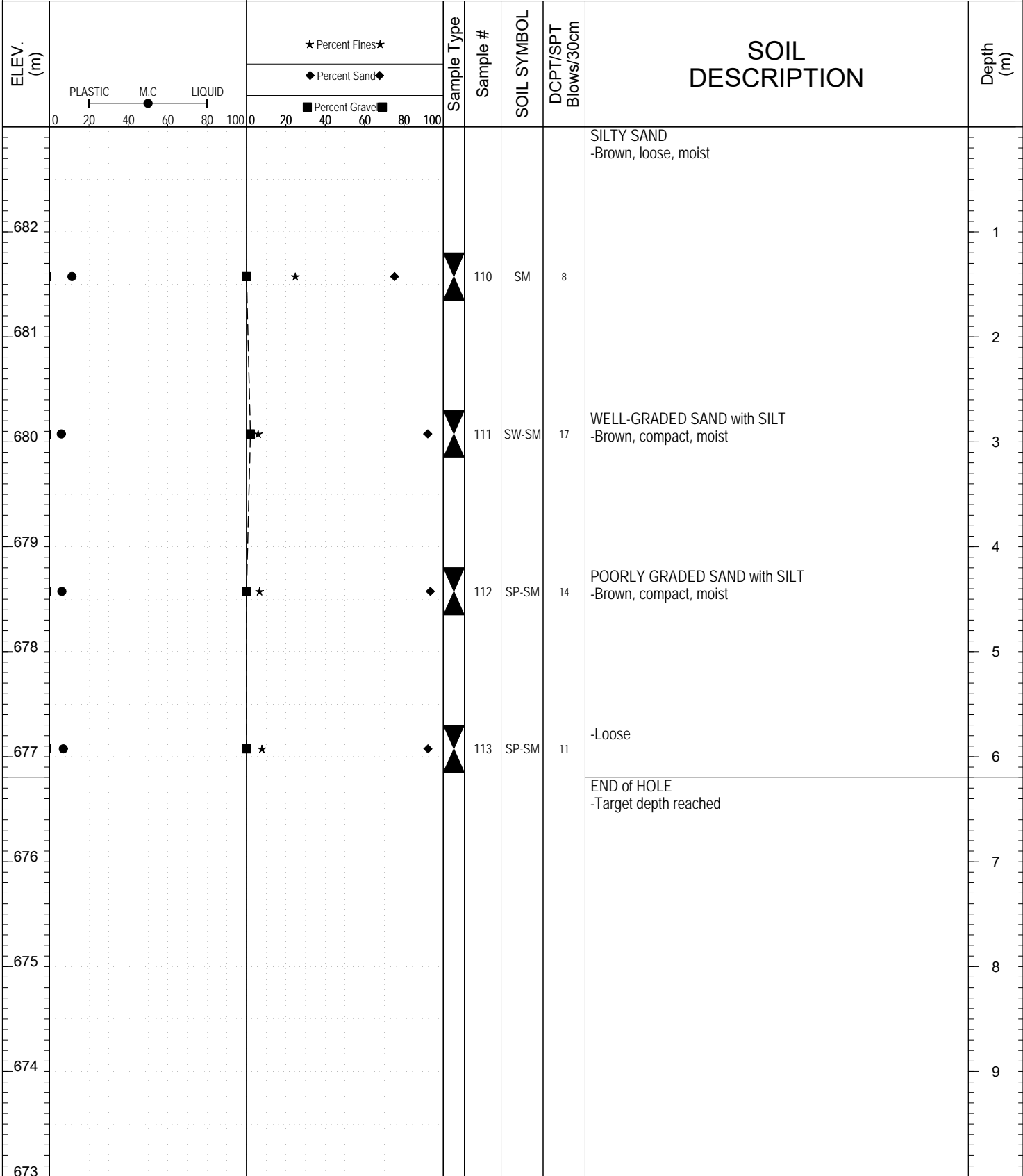
LOGGED BY: R.Stilwell	Termination Depth: 6.2m
COMPILED BY: R.Stilwell	Complete: 9/2/2016 1:45:00 PM
REVIEWED BY:	Pit #: Page 1 of 1

SUBSURFACE EXPLORATION AND TEST REPORT Campbell Highway SOURCE/TP#: 897-5708

Simpson Creek Valley, km 77.5-78.5 LHS PROJECT NO: 552-202104-0661-5

B61 150mm Coordinates: Z09V N6723770m E489340m ELEVATION: 683m

SAMPLE TYPE UNDISTURBED DCPT AUGER BULK SPT CORE



Highways and Public Works
Transportation Engineering Branch

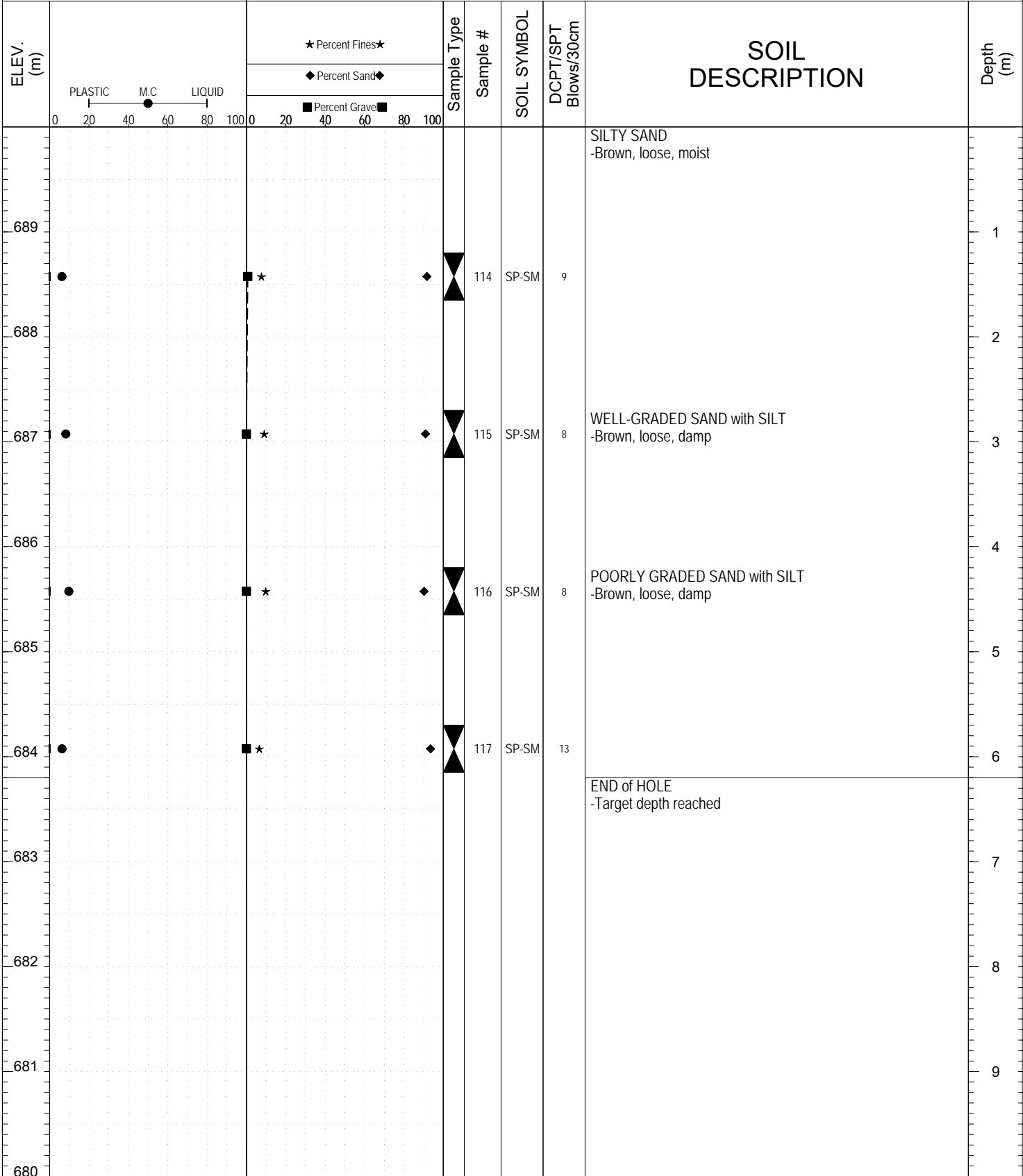
LOGGED BY: R.Stilwell	Termination Depth: 6.2m
COMPILED BY: R.Stilwell	Complete: 9/2/2016 4:45:00 PM
REVIEWED BY:	Pit #: Page 1 of 1

SUBSURFACE EXPLORATION AND TEST REPORT Campbell Highway SOURCE/TP#: 897-5709

Simpson Creek Valley, km 77.5-78.5 LHS PROJECT NO: 552-202104-0661-5

B61 150mm Coordinates: Z09V N6723866m E489355m ELEVATION: 690m

SAMPLE TYPE UNDISTURBED DCPT AUGER BULK SPT CORE



Highways and Public Works
Transportation Engineering Branch

LOGGED BY: R.Stilwell	Termination Depth: 6.2m
COMPILED BY: R.Stilwell	Complete: 9/2/2016 5:15:00 AM
REVIEWED BY:	Pit #: Page 1 of 1

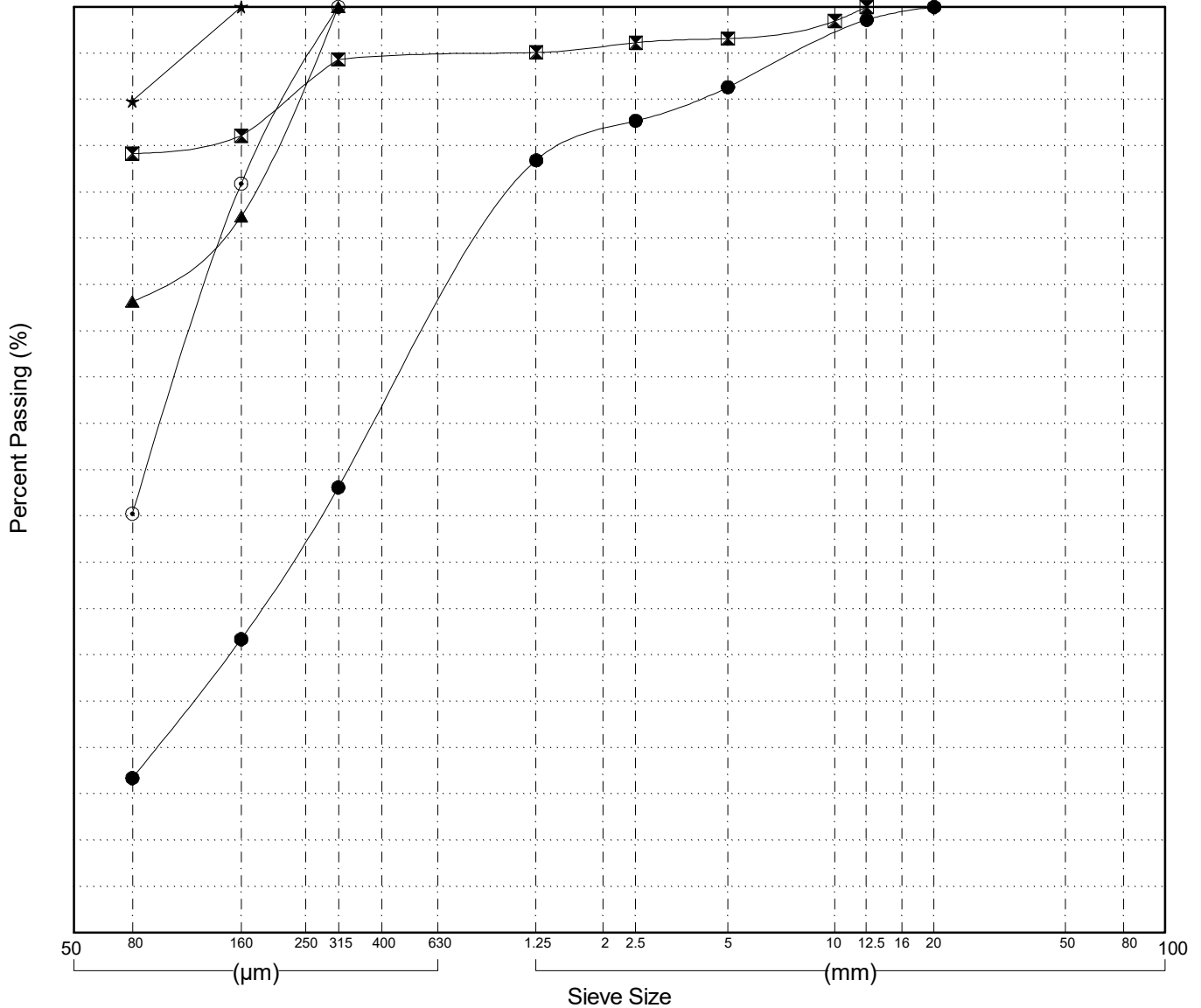
GRAIN SIZE ANALYSIS	Campbell Highway Simpson Creek Valley	SOURCE/TP#: 897-5702
	km 77.5-78.5 LHS	PROJECT NO: 552-202104-0661-5
B61 150mm	Coordinates: Z09V N6723351m E489324m	ELEVATION: 626m

Master Revised July 2013

Field#	Lab#	Depth	Classification	%H2O	LL	PL	PI	Cc	Cu
● 087	305	1.2 to 1.7	SILTY SAND(SM)	13.6	NP	NP	NP		
☒ 088	306	2.7 to 3.2	SILT with SAND(ML)	36.5	NP	NP	NP		
▲ 089	307	4.2 to 4.7	SANDY SILT(ML)	25.3	NP	NP	NP		
★ 090	308	5.7 to 6.2	SILT(ML)	26.7	NP	NP	NP		
⊙ 091	309	7.2 to 7.7	SILTY SAND(SM)	17.6	NP	NP	NP		

Field#	Lab#	% PASSING														% Breakdown			
		100.0	80.0	50.0	25.0	20.0	12.5	10.0	5.0	2.5	1.25	0.630	0.315	0.160	0.080	Gravel	Sand	Silt	Clay
● 087	305	100.0	100.0	100.0	100.0	100.0	98.6	96.9	91.3	87.7	83.4	65.9	48.1	31.7	16.7	8.7	74.6	16.7	
☒ 088	306	100.0	100.0	100.0	100.0	100.0	100.0	98.5	96.6	96.1	95.1	94.7	94.3	86.1	84.1	3.4	12.4	84.1	
▲ 089	307	100.0	100.0	100.0	100.0	100.0	100.0	100.0	100.0	100.0	100.0	100.0	100.0	77.4	68.2	0.0	31.8	68.2	
★ 090	308	100.0	100.0	100.0	100.0	100.0	100.0	100.0	100.0	100.0	100.0	100.0	100.0	100.0	89.8	0.0	10.2	89.8	
⊙ 091	309	100.0	100.0	100.0	100.0	100.0	100.0	100.0	100.0	100.0	100.0	100.0	100.0	80.9	45.3	0.0	54.7	45.3	

Silt	Sand			Gravel	
	Fine	Medium	Coarse	Fine	Coarse



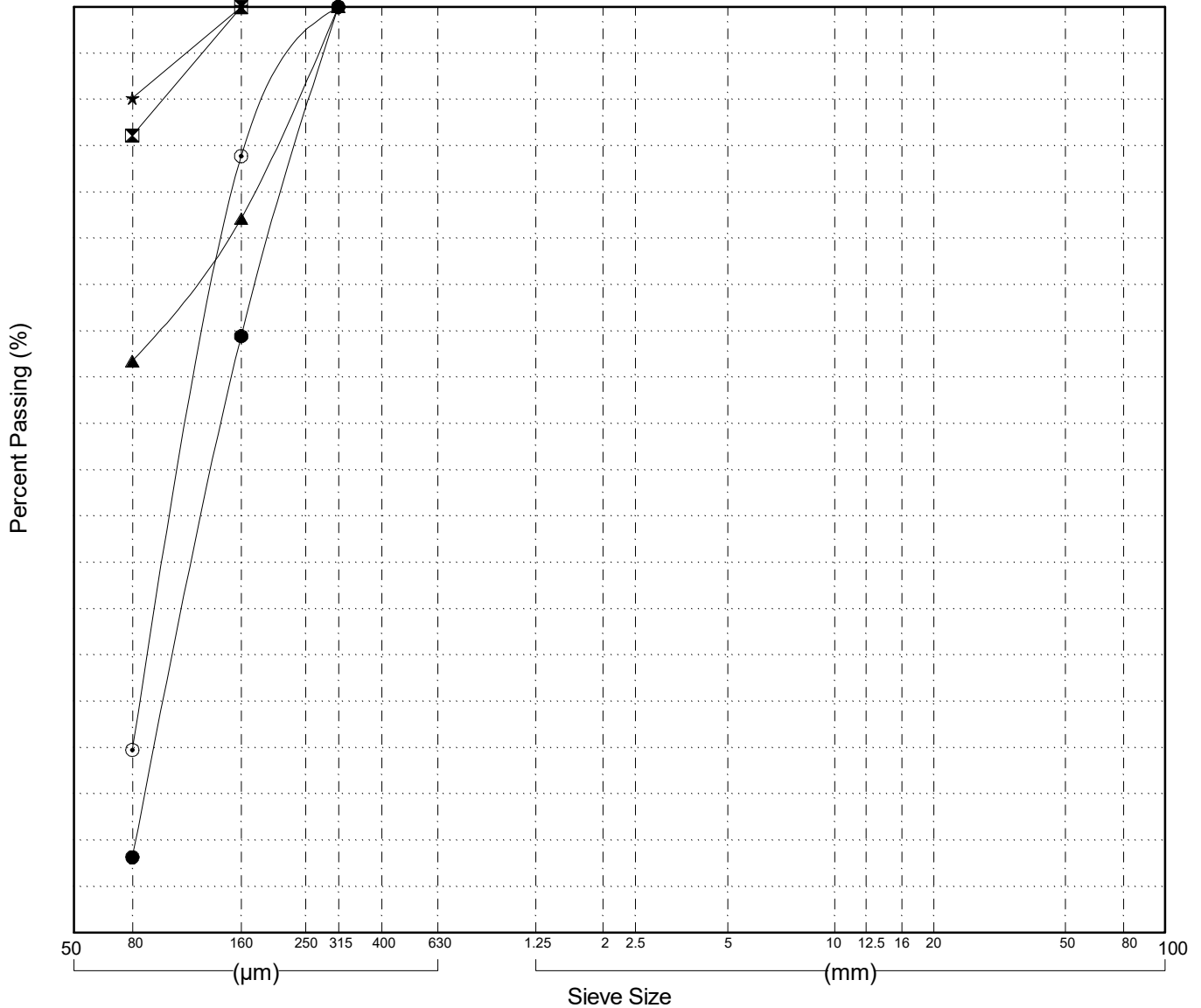
GRAIN SIZE ANALYSIS	Campbell Highway Simpson Creek Valley	SOURCE/TP#: 897-5703
	km 77.5-78.5 LHS	PROJECT NO: 552-202104-0661-5
B61 150mm	Coordinates: Z09V N6723327m E489327m	ELEVATION: 655m

Master Revised July 2013

Field#	Lab#	Depth	Classification	%H2O	LL	PL	PI	Cc	Cu
● 093	311	1.2 to 1.7	POORLY GRADED SAND with SILT(SP-SM)	4.1	NP	NP	NP	0.9	2.0
☒ 094	312	2.7 to 3.2	SILT(ML)	25.1	NP	NP	NP		
▲ 095	313	4.2 to 4.7	SANDY SILT(ML)	28.6	NP	NP	NP		
★ 096	314	5.7 to 6.2	SILT(ML)	21.4	NP	NP	NP		
⊙ 097	315	7.2 to 7.7	SILTY SAND(SM)	27.5	NP	NP	NP		

Field#	Lab#	% PASSING															% Breakdown			
		100.0	80.0	50.0	25.0	20.0	12.5	10.0	5.0	2.5	1.25	0.630	0.315	0.160	0.080	Gravel	Sand	Silt	Clay	
● 093	311	100.0	100.0	100.0	100.0	100.0	100.0	100.0	100.0	100.0	100.0	100.0	100.0	64.5	8.2	0.0	91.8	8.2		
☒ 094	312	100.0	100.0	100.0	100.0	100.0	100.0	100.0	100.0	100.0	100.0	100.0	100.0	100.0	86.1	0.0	13.9	86.1		
▲ 095	313	100.0	100.0	100.0	100.0	100.0	100.0	100.0	100.0	100.0	100.0	100.0	100.0	77.1	61.7	0.0	38.3	61.7		
★ 096	314	100.0	100.0	100.0	100.0	100.0	100.0	100.0	100.0	100.0	100.0	100.0	100.0	100.0	90.1	0.0	9.9	90.1		
⊙ 097	315	100.0	100.0	100.0	100.0	100.0	100.0	100.0	100.0	100.0	100.0	100.0	100.0	83.9	19.8	0.0	80.2	19.8		

Silt	Sand			Gravel	
	Fine	Medium	Coarse	Fine	Coarse



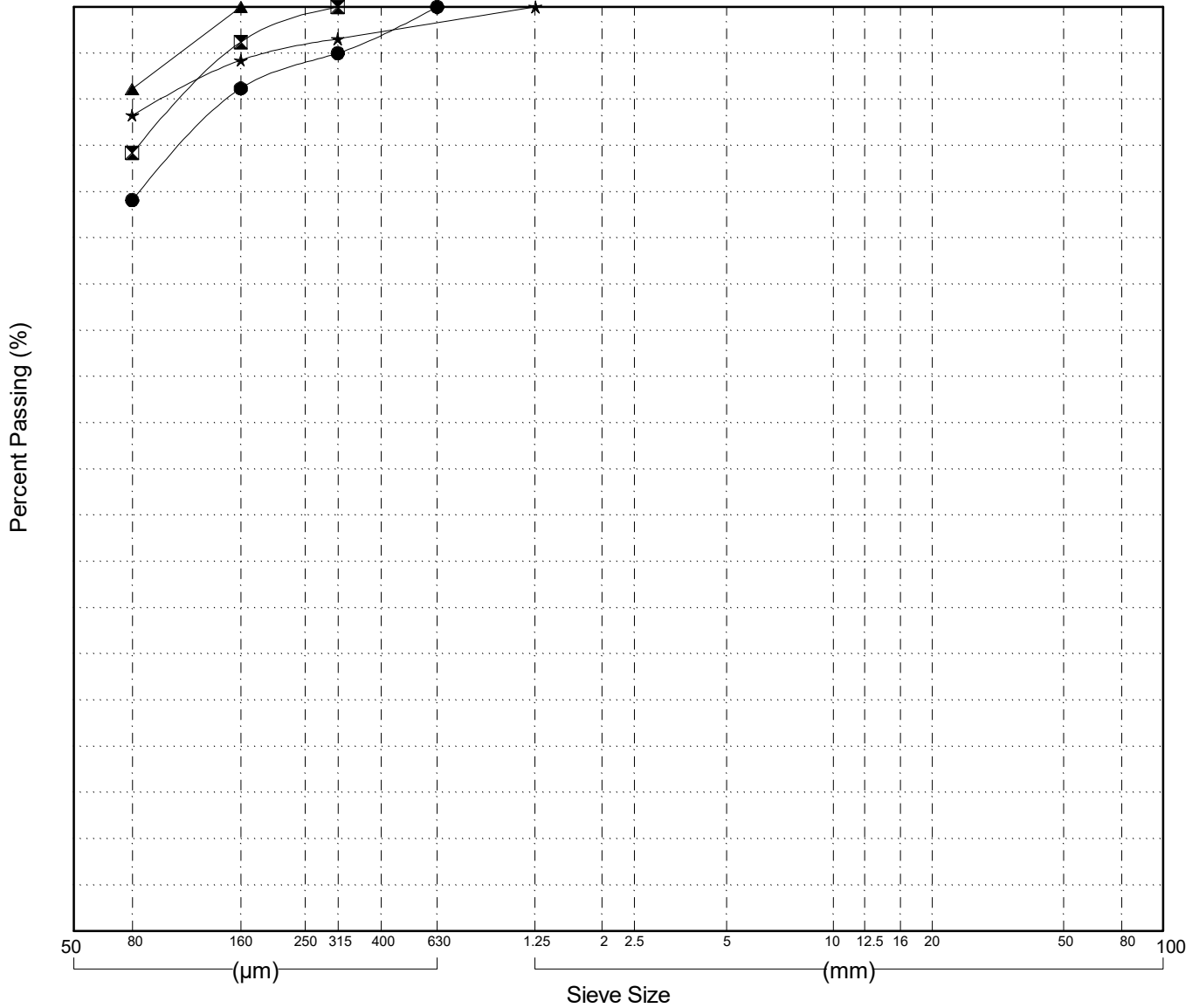
GRAIN SIZE ANALYSIS	Campbell Highway Simpson Creek Valley	SOURCE/TP#: 897-5705
	km 77.5-78.5 LHS	PROJECT NO: 552-202104-0661-5
B61 150mm	Coordinates: Z09V N6723480m E489275m	ELEVATION: 655m

Master Revised July 2013

Field#	Lab#	Depth	Classification	%H2O	LL	PL	PI	Cc	Cu
● 098	316	1.2 to 1.7	SILT with SAND(ML)	7.6	NP	NP	NP		
☒ 099	317	2.7 to 3.2	SILT with SAND(ML)	8.6	NP	NP	NP		
▲ 100	318	4.2 to 4.7	SILT(ML)	11.3	NP	NP	NP		
★ 101	319	5.7 to 6.2	SILT(ML)	27.1	NP	NP	NP		

Field#	Lab#	% PASSING														% Breakdown				
			100.0	80.0	50.0	25.0	20.0	12.5	10.0	5.0	2.5	1.25	0.630	0.315	0.160	0.080	Gravel	Sand	Silt	Clay
● 098	316	100.0	100.0	100.0	100.0	100.0	100.0	100.0	100.0	100.0	100.0	100.0	100.0	100.0	95.0	91.2	79.1	0.0	20.9	79.1
☒ 099	317	100.0	100.0	100.0	100.0	100.0	100.0	100.0	100.0	100.0	100.0	100.0	100.0	100.0	100.0	96.2	84.2	0.0	15.8	84.2
▲ 100	318	100.0	100.0	100.0	100.0	100.0	100.0	100.0	100.0	100.0	100.0	100.0	100.0	100.0	100.0	100.0	91.1	0.0	8.9	91.1
★ 101	319	100.0	100.0	100.0	100.0	100.0	100.0	100.0	100.0	100.0	100.0	98.3	96.5	94.2	88.3	0.0	11.7	88.3		

Silt	Sand			Gravel	
	Fine	Medium	Coarse	Fine	Coarse



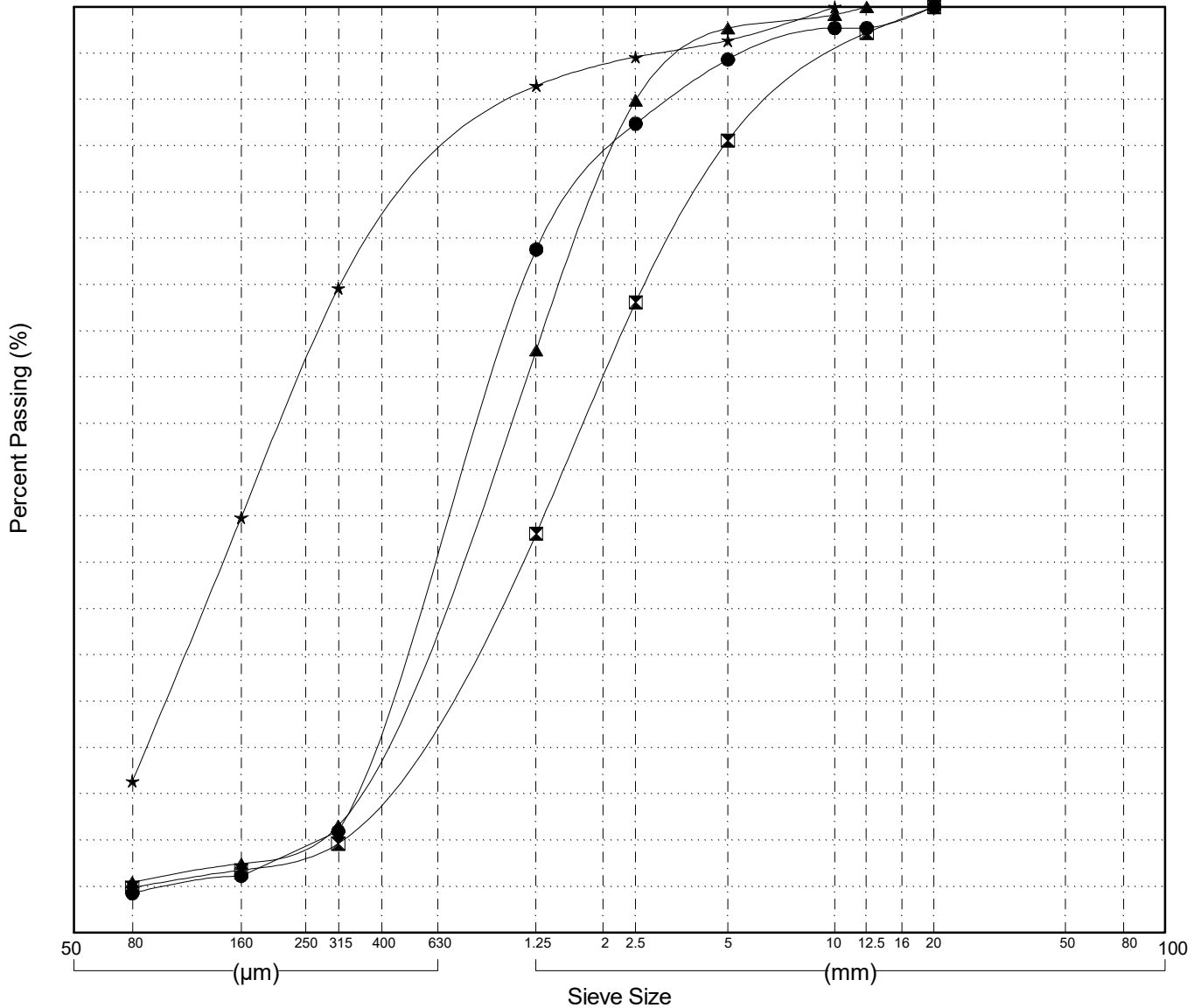
GRAIN SIZE ANALYSIS	Campbell Highway Simpson Creek Valley	SOURCE/TP#: 897-5706
	km 77.5-78.5 LHS	PROJECT NO: 552-202104-0661-5
B61 150mm	Coordinates: Z09V N6723575m E489283m	ELEVATION: 674m

Master Revised July 2013

Field#	Lab#	Depth	Classification	%H2O	LL	PL	PI	Cc	Cu
● 102	320	1.2 to 1.7	POORLY GRADED SAND(SP)	2.5	NP	NP	NP	0.9	3.4
☒ 103	321	2.7 to 3.2	POORLY GRADED SAND(SP)	4.1	NP	NP	NP	0.8	6.2
▲ 104	322	4.2 to 4.7	POORLY GRADED SAND with SILT(SP-SM)	2.9	NP	NP	NP	0.9	4.8
★ 105	323	5.7 to 6.2	SILTY SAND(SM)	8.8	NP	NP	NP		

Field#	Lab#	% PASSING														% Breakdown			
		100.0	80.0	50.0	25.0	20.0	12.5	10.0	5.0	2.5	1.25	0.630	0.315	0.160	0.080	Gravel	Sand	Silt	Clay
● 102	320	100.0	100.0	100.0	100.0	100.0	97.7	97.7	94.3	87.4	73.8	42.6	11.0	6.1	4.3	5.7	90.0	4.3	
☒ 103	321	100.0	100.0	100.0	100.0	100.0	97.2	94.5	85.6	68.1	43.1	26.5	9.6	6.8	4.9	14.4	80.7	4.9	
▲ 104	322	100.0	100.0	100.0	100.0	100.0	100.0	99.2	97.7	89.9	62.9	37.4	11.6	7.5	5.5	2.3	92.2	5.5	
★ 105	323	100.0	100.0	100.0	100.0	100.0	100.0	100.0	96.4	94.6	91.5	80.6	69.6	44.8	16.4	3.6	80.0	16.4	

Silt	Sand			Gravel	
	Fine	Medium	Coarse	Fine	Coarse



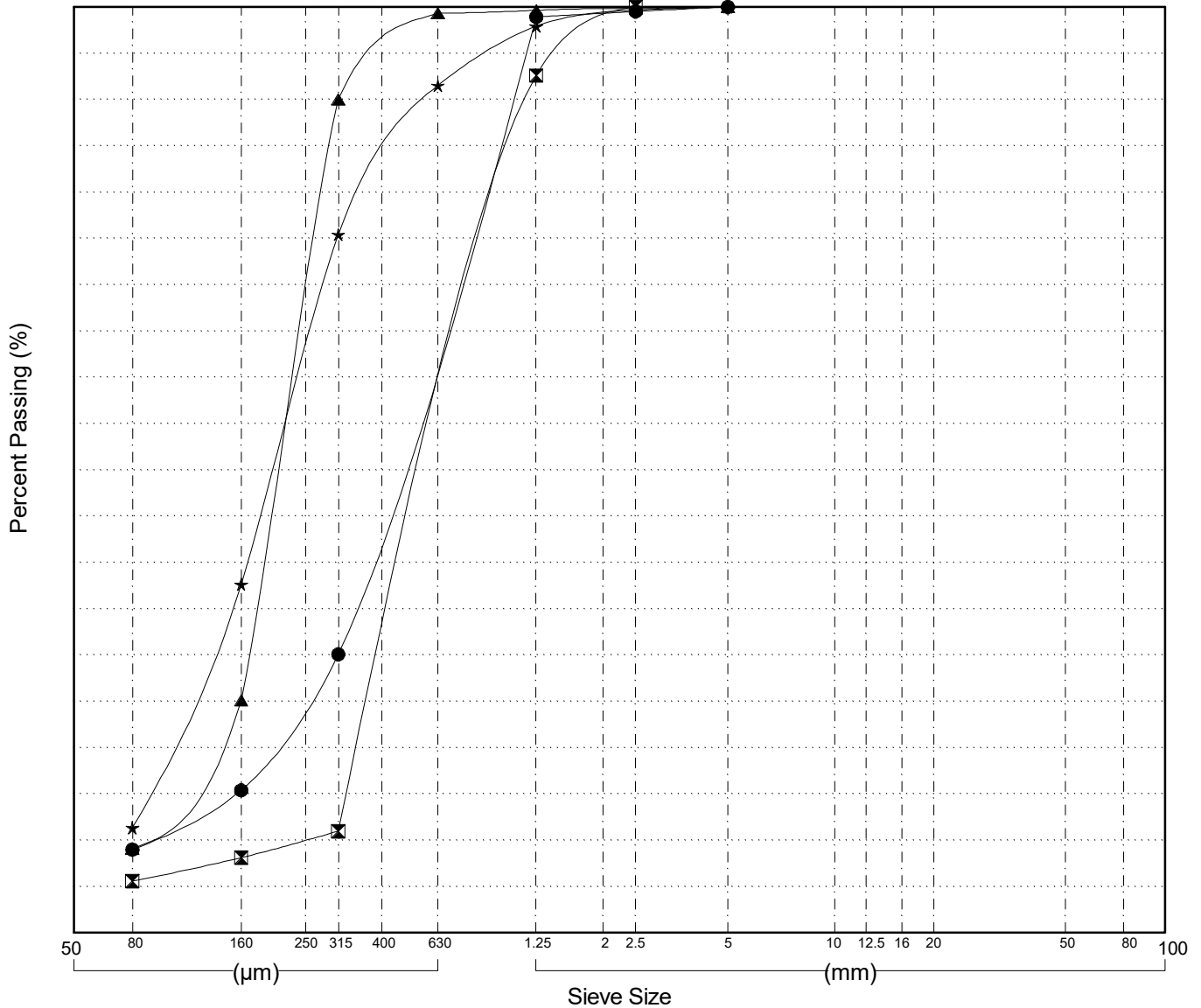
GRAIN SIZE ANALYSIS	Campbell Highway Simpson Creek Valley	SOURCE/TP#: 897-5707
	km 77.5-78.5 LHS	PROJECT NO: 552-202104-0661-5
B61 150mm	Coordinates: Z09V N6723672m E489302m	ELEVATION: 688m

Master Revised July 2013

Field#	Lab#	Depth	Classification	%H2O	LL	PL	PI	Cc	Cu
● 106	324	1.2 to 1.7	WELL-GRADED SAND with SILT(SW-SM)	7.9	NP	NP	NP	2.0	6.8
☒ 107	325	2.7 to 3.2	POORLY GRADED SAND with SILT(SP-SM)	4.9	NP	NP	NP	1.0	2.9
▲ 108	326	4.2 to 4.7	POORLY GRADED SAND with SILT(SP-SM)	3.7	NP	NP	NP	1.6	2.9
★ 109	327	5.7 to 6.2	POORLY GRADED SAND with SILT(SP-SM)	5.6	NP	NP	NP	1.0	3.3

Field#	Lab#	100.0	80.0	50.0	25.0	20.0	12.5	10.0	5.0	2.5	1.25	0.630	0.315	0.160	0.080	% Breakdown			
																Gravel	Sand	Silt	Clay
● 106	324	100.0	100.0	100.0	100.0	100.0	100.0	100.0	100.0	99.5	98.9	64.7	30.1	15.4	9.0	0.0	91.0	9.0	0.0
☒ 107	325	100.0	100.0	100.0	100.0	100.0	100.0	100.0	100.0	100.0	92.6	52.0	11.0	8.1	5.6	0.0	94.4	5.6	0.0
▲ 108	326	100.0	100.0	100.0	100.0	100.0	100.0	100.0	100.0	99.8	99.6	99.3	90.0	25.1	9.1	0.0	90.9	9.1	0.0
★ 109	327	100.0	100.0	100.0	100.0	100.0	100.0	100.0	100.0	99.7	97.9	91.5	75.4	37.6	11.3	0.0	88.7	11.3	0.0

Silt	Sand			Gravel	
	Fine	Medium	Coarse	Fine	Coarse



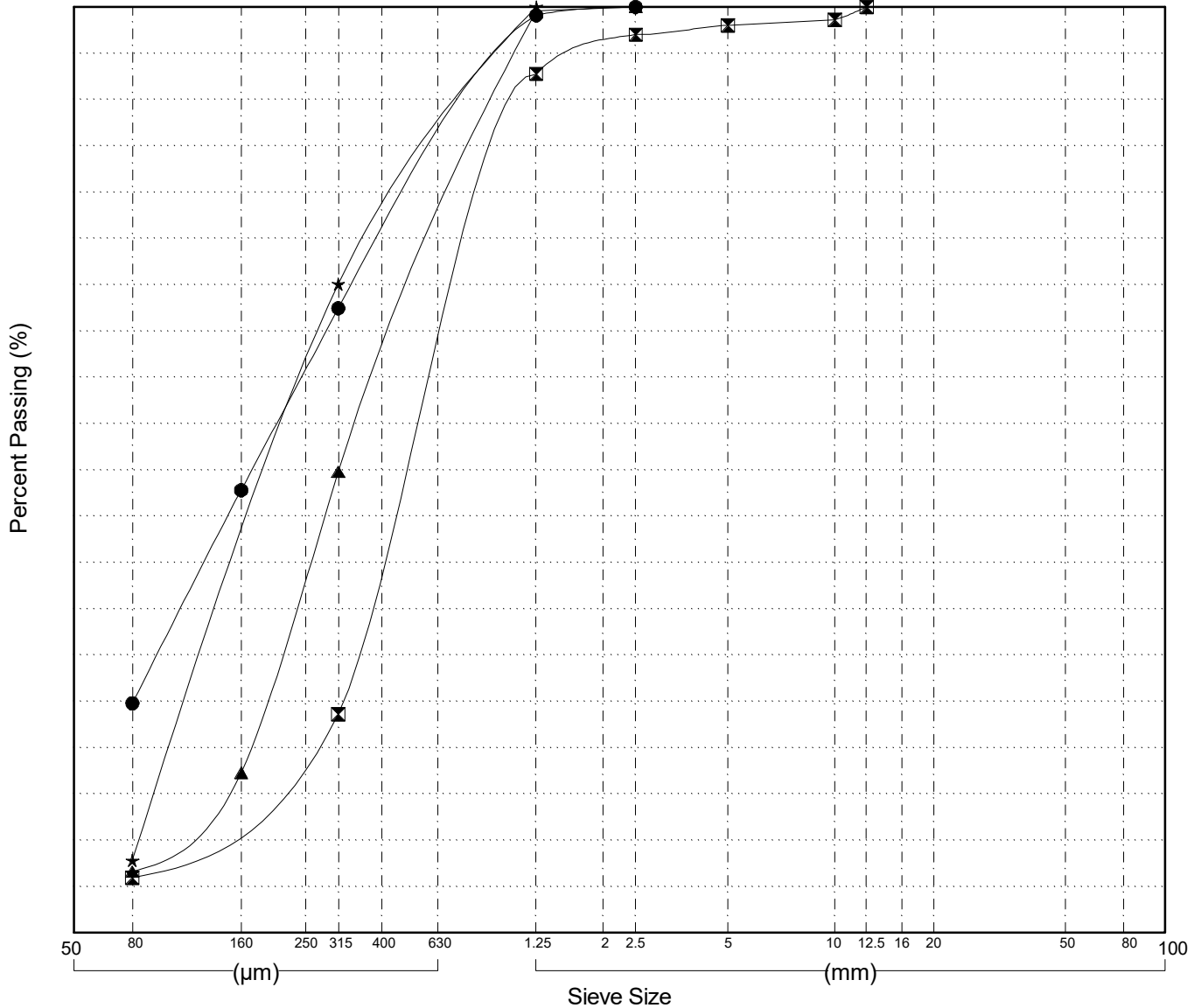
GRAIN SIZE ANALYSIS	Campbell Highway Simpson Creek Valley	SOURCE/TP#: 897-5708
	km 77.5-78.5 LHS	PROJECT NO: 552-202104-0661-5
B61 150mm	Coordinates:Z09V N6723770m E489340m	ELEVATION: 683m

Master Revised July 2013

Field#	Lab#	Depth	Classification	%H2O	LL	PL	PI	Cc	Cu
● 110	328	1.2 to 1.7	SILTY SAND(SM)	11.4	NP	NP	NP		
☒ 111	329	2.7 to 3.2	WELL-GRADED SAND with SILT(SW-SM)	5.9	NP	NP	NP	1.9	6.2
▲ 112	330	4.2 to 4.7	POORLY GRADED SAND with SILT(SP-SM)	6.2	NP	NP	NP	1.1	4.4
★ 113	331	5.7 to 6.2	POORLY GRADED SAND with SILT(SP-SM)	7.0	NP	NP	NP	0.8	3.2

Field#	Lab#	% PASSING														% Breakdown			
		100.0	80.0	50.0	25.0	20.0	12.5	10.0	5.0	2.5	1.25	0.630	0.315	0.160	0.080	Gravel	Sand	Silt	Clay
● 110	328	100.0	100.0	100.0	100.0	100.0	100.0	100.0	100.0	100.0	99.1	83.4	67.5	47.8	24.8	0.0	75.2	24.8	
☒ 111	329	100.0	100.0	100.0	100.0	100.0	100.0	98.6	98.0	97.0	92.8	58.4	23.6	15.3	5.9	2.0	92.1	5.9	
▲ 112	330	100.0	100.0	100.0	100.0	100.0	100.0	100.0	100.0	100.0	99.6	74.8	49.8	17.3	6.6	0.0	93.4	6.6	
★ 113	331	100.0	100.0	100.0	100.0	100.0	100.0	100.0	100.0	100.0	100.0	85.1	70.1	40.7	7.8	0.0	92.2	7.8	

Silt	Sand			Gravel	
	Fine	Medium	Coarse	Fine	Coarse



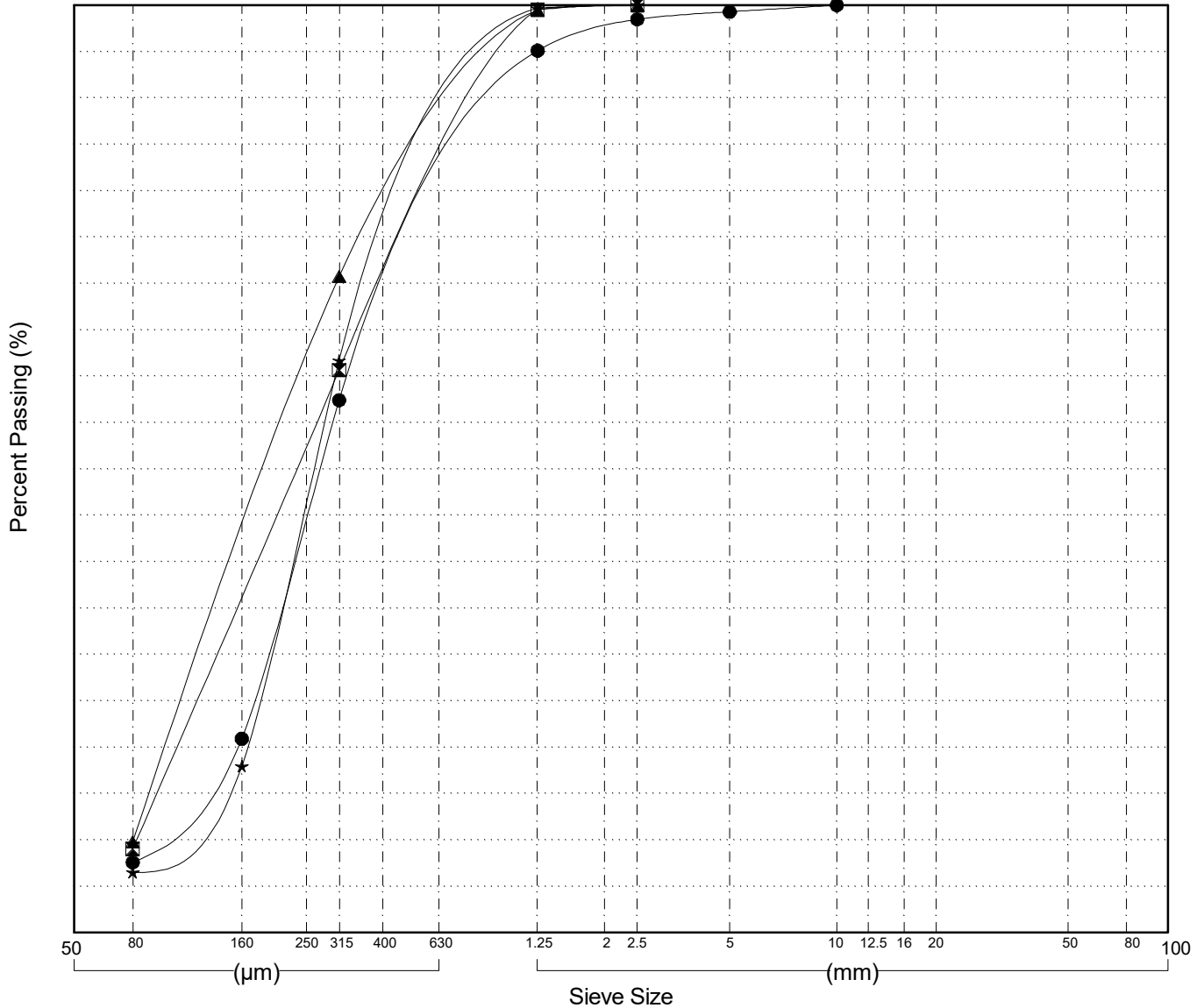
GRAIN SIZE ANALYSIS	Campbell Highway Simpson Creek Valley	SOURCE/TP#: 897-5709
	km 77.5-78.5 LHS	PROJECT NO: 552-202104-0661-5
B61 150mm	Coordinates: Z09V N6723866m E489355m	ELEVATION: 690m

Master Revised July 2013

Field#	Lab#	Depth	Classification	%H2O	LL	PL	PI	Cc	Cu
● 114	332	1.2 to 1.7	POORLY GRADED SAND with SILT(SP-SM)	6.2	NP	NP	NP	1.2	4.0
☒ 115	333	2.7 to 3.2	POORLY GRADED SAND with SILT(SP-SM)	8.2	NP	NP	NP	0.8	4.0
▲ 116	334	4.2 to 4.7	POORLY GRADED SAND with SILT(SP-SM)	9.8	NP	NP	NP	0.8	3.2
★ 117	335	5.7 to 6.2	POORLY GRADED SAND with SILT(SP-SM)	6.3	NP	NP	NP	1.3	3.2

Field#	Lab#	100.0	80.0	50.0	25.0	20.0	12.5	10.0	5.0	2.5	1.25	0.630	0.315	0.160	0.080	% Breakdown			
																Gravel	Sand	Silt	Clay
● 114	332	100.0	100.0	100.0	100.0	100.0	100.0	100.0	99.3	98.5	95.1	76.4	57.4	20.9	7.6	0.7	91.7	7.6	
☒ 115	333	100.0	100.0	100.0	100.0	100.0	100.0	100.0	100.0	100.0	99.5	80.2	60.7	36.3	9.0	0.0	91.0	9.0	
▲ 116	334	100.0	100.0	100.0	100.0	100.0	100.0	100.0	100.0	100.0	99.5	85.2	70.7	42.0	9.8	0.0	90.2	9.8	
★ 117	335	100.0	100.0	100.0	100.0	100.0	100.0	100.0	100.0	100.0	99.7	80.8	61.7	17.9	6.5	0.0	93.5	6.5	

Silt	Sand			Gravel	
	Fine	Medium	Coarse	Fine	Coarse



SUBSURFACE EXPLORATION AND TEST REPORT	Campbell Highway	SOURCE/TP#: 897-5702
	Simpson Creek Valley, km 77.5-78.5 LHS	PROJECT NO: 552-202104-0661-5
B61 150mm	Coordinates: Z09V N6723351m E489324m	ELEVATION: 626m

PHOTOS



Figure 897-5702.1
SPT 01: Return from 1.2 to 1.7m



Figure 897-5702.2
SPT 02: Return from 2.7 to 3.2

SUBSURFACE EXPLORATION AND TEST REPORT	Campbell Highway	SOURCE/TP#: 897-5702
	Simpson Creek Valley, km 77.5-78.5 LHS	PROJECT NO: 552-202104-0661-5
B61 150mm	Coordinates: Z09V N6723351m E489324m	ELEVATION: 626m

PHOTOS



Figure 897-5702.3
SPT 03: Return from 4.2 to 4.7m



Figure 897-5702.4
SPT 04: Return from 5.7 to 6.2m

SUBSURFACE EXPLORATION AND TEST REPORT	Campbell Highway	SOURCE/TP#: 897-5702
	Simpson Creek Valley, km 77.5-78.5 LHS	PROJECT NO: 552-202104-0661-5
B61 150mm	Coordinates: Z09V N6723351m E489324m	ELEVATION: 626m

PHOTOS



Figure 897-5702.5
SPT 05: Return from 7.2 to 7.7m

SUBSURFACE EXPLORATION AND TEST REPORT	Campbell Highway	SOURCE/TP#: 897-5703
	Simpson Creek Valley, km 77.5-78.5 LHS	PROJECT NO: 552-202104-0661-5
B61 150mm	Coordinates: Z09V N6723327m E489327m	ELEVATION: 655m

PHOTOS



Figure 897-5703.1
SPT 01: Return from 1.2 to 1.7m



Figure 897-5703.2
SPT 02: Return from 2.7 to 3.2m

SUBSURFACE EXPLORATION AND TEST REPORT	Campbell Highway	SOURCE/TP#: 897-5703
	Simpson Creek Valley, km 77.5-78.5 LHS	PROJECT NO: 552-202104-0661-5
B61 150mm	Coordinates: Z09V N6723327m E489327m	ELEVATION: 655m

PHOTOS



Figure 897-5703.3
SPT 03: Return from 4.2 to 4.7m



Figure 897-5703.4
SPT 04: Return from 5.7 to 6.2m

SUBSURFACE EXPLORATION AND TEST REPORT	Campbell Highway	SOURCE/TP#: 897-5705
	Simpson Creek Valley, km 77.5-78.5 LHS	PROJECT NO: 552-202104-0661-5
B61 150mm	Coordinates: Z09V N6723480m E489275m	ELEVATION: 655m

PHOTOS



Figure 897-5705.1
SPT 01: Return from 1.2 to 1.7m



Figure 897-5705.2
SPT 02: Return from 2.7 to 3.2m

SUBSURFACE EXPLORATION AND TEST REPORT	Campbell Highway	SOURCE/TP#: 897-5705
	Simpson Creek Valley, km 77.5-78.5 LHS	PROJECT NO: 552-202104-0661-5
B61 150mm	Coordinates: Z09V N6723480m E489275m	ELEVATION: 655m

PHOTOS



Figure 897-5705.3
SPT 04: Return from 5.7 to 6.2m

SUBSURFACE EXPLORATION AND TEST REPORT	Campbell Highway	SOURCE/TP#: 897-5706
	Simpson Creek Valley, km 77.5-78.5 LHS	PROJECT NO: 552-202104-0661-5
B61 150mm	Coordinates: Z09V N6723575m E489283m	ELEVATION: 674m

PHOTOS



Figure 897-5706.1
SPT 01: Return from 1.2 to 1.7m



Figure 897-5706.2
SPT 02: Return from 5.7 to 6.2m

SUBSURFACE EXPLORATION AND TEST REPORT	Campbell Highway	SOURCE/TP#: 897-5707
	Simpson Creek Valley, km 77.5-78.5 LHS	PROJECT NO: 552-202104-0661-5
B61 150mm	Coordinates: Z09V N6723672m E489302m	ELEVATION: 688m

PHOTOS



Figure 897-5707.1
SPT 01: Return from 1.2 to 1.7m



Figure 897-5707.2
SPT 03: Return from 2.7 to 3.2m



SUBSURFACE EXPLORATION AND TEST REPORT	Campbell Highway	SOURCE/TP#: 897-5707
	Simpson Creek Valley, km 77.5-78.5 LHS	PROJECT NO: 552-202104-0661-5
B61 150mm	Coordinates: Z09V N6723672m E489302m	ELEVATION: 688m

PHOTOS



Figure 897-5707.3
SPT 04: Return from 5.7 to 6.2m



Figure 897-5707.4
SPT 04: Return from 5.7 to 6.2m

SUBSURFACE EXPLORATION AND TEST REPORT	Campbell Highway	SOURCE/TP#: 897-5708
	Simpson Creek Valley, km 77.5-78.5 LHS	PROJECT NO: 552-202104-0661-5
B61 150mm	Coordinates: Z09V N6723770m E489340m	ELEVATION: 683m

PHOTOS



Figure 897-5708.1
SPT 01: Return from 1.2 to 1.7m



Figure 897-5708.2
SPT 02: Return from 2.7 to 3.2m

SUBSURFACE EXPLORATION AND TEST REPORT	Campbell Highway	SOURCE/TP#: 897-5708
	Simpson Creek Valley, km 77.5-78.5 LHS	PROJECT NO: 552-202104-0661-5
B61 150mm	Coordinates: Z09V N6723770m E489340m	ELEVATION: 683m

PHOTOS



Figure 897-5708.3
SPT 03: Return from 4.2 to 4.7m