

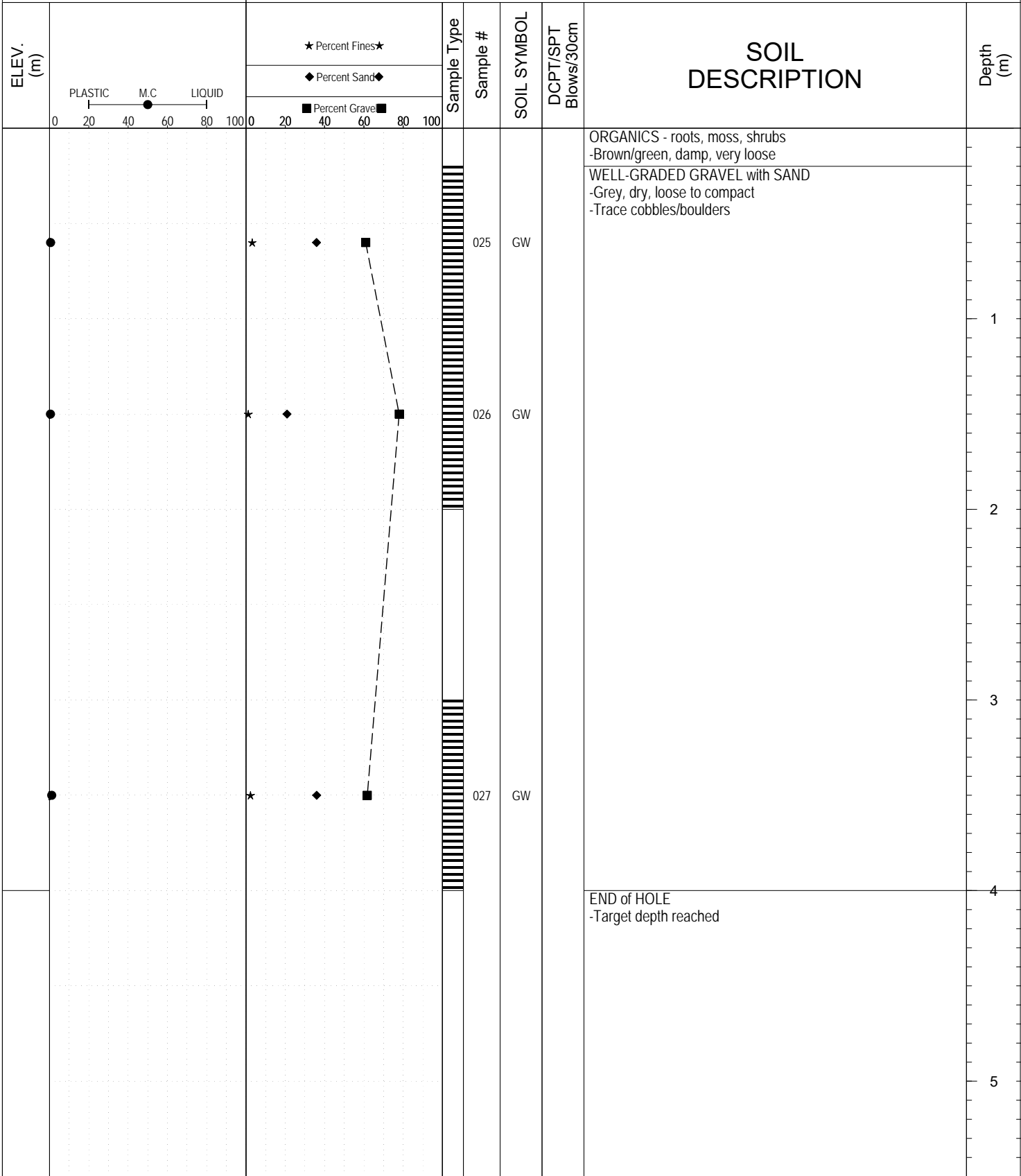
SUBSURFACE EXPLORATION AND TEST REPORT		Campbell Highway		SOURCE/TP#: 899-5757					
Graceland		Gravel Exploration, km 382.4 RHS		PROJECT NO: 552-202104					
CAT 320CL		Coordinates: Z08V N6883991m E610531m		ELEVATION: m					
SAMPLE TYPE		<input type="checkbox"/> UNDISTURBED	<input type="checkbox"/> DCPT	<input type="checkbox"/> AUGER	<input type="checkbox"/> BULK				
		<input type="checkbox"/> SPT	<input type="checkbox"/> CORE						
ELEV. (m)	★ Percent Fines★ ◆ Percent Sand◆ ■ Percent Gravel■			Sample Type	Sample #	SOIL SYMBOL	DCPT/SPT Blows/30cm	SOIL DESCRIPTION	Depth (m)
	PLASTIC M.C LIQUID 0 20 40 60 80 100								
								WELL-GRADED GRAVEL with SILT and SAND -Grey, compact, damp, sub-angular to sub-rounded -Trace cobbles	
					030	GW-GM			1
									2
									3
					031	GW-GM			4
								END of HOLE -Target depth reached	5



SUBSURFACE EXPLORATION AND TEST REPORT		Campbell Highway		SOURCE/TP#: 899-5758					
Graceland		Gravel Exploration, km 382.4 RHS		PROJECT NO: 552-202104					
CAT 320CL		Coordinates: Z08V N6884024m E610549m		ELEVATION: m					
SAMPLE TYPE		<input type="checkbox"/> UNDISTURBED	<input type="checkbox"/> DCPT	<input type="checkbox"/> AUGER	<input type="checkbox"/> BULK	<input checked="" type="checkbox"/> SPT	<input type="checkbox"/> CORE		
ELEV. (m)		★ Percent Fines★		Sample Type	Sample #	SOIL SYMBOL	DCPT/SPT Blows/30cm	SOIL DESCRIPTION	Depth (m)
		◆ Percent Sand◆	■ Percent Gravel■						
0	20 40 60 80 100	0	20 40 60 80 100						
					028	GW		WELL-GRADED GRAVEL with SAND -Grey, damp, compact, sub-angular to sub-rounded -Trace cobbles/boulders, size 200mm	1
									2
					029	GP		POORLY GRADED GRAVEL with SAND	3
									4
								END of HOLE -Target depth reached	5
		Highways and Public Works Transportation Engineering Branch				LOGGED BY: Dave Lorenzi	Termination Depth: 5m		
						COMPILED BY: R.Stilwell	Complete: 10/4/2016 12:20:00 PM		
						REVIEWED BY:	Pit #: 105 K-01	Page 1 of 1	

SUBSURFACE EXPLORATION AND TEST REPORT		Campbell Highway	SOURCE/TP#: 899-5759
Graceland		Gravel Exploration, km 382.4 RHS	PROJECT NO: 552-202104
CAT 320CL		Coordinates: Z08V N6884008m E610439m	ELEVATION: m

SAMPLE TYPE UNDISTURBED DCPT AUGER BULK SPT CORE



Highways and Public Works
Transportation Engineering Branch

LOGGED BY: Dave Lorenzi	Termination Depth: 4m
COMPILED BY: R.Stilwell	Complete: 10/4/2016 12:55:00 PM
REVIEWED BY:	Pit #: 105 K-01 Page 1 of 1

SUBSURFACE EXPLORATION AND TEST REPORT		Campbell Highway		SOURCE/TP#: 899-5760				
Graceland		Gravel Exploration, km 382.4 RHS		PROJECT NO: 552-202104				
CAT 320CL		Coordinates: Z08V N6884139m E610478m		ELEVATION: m				
SAMPLE TYPE		<input type="checkbox"/> UNDISTURBED <input checked="" type="checkbox"/> DCPT <input type="checkbox"/> AUGER <input type="checkbox"/> BULK <input checked="" type="checkbox"/> SPT <input type="checkbox"/> CORE						
ELEV. (m)	★ Percent Fines ★ ◆ Percent Sand ◆ ■ Percent Gravel ■		Sample Type	Sample #	SOIL SYMBOL	DCPT/SPT Blows/30cm	SOIL DESCRIPTION	Depth (m)
	PLASTIC M.C LIQUID 0 20 40 60 80 100							
							ORGANICS - Silt, roots, leaves, moss -Brown, damp, very loose	
							POORLY GRADED GRAVEL with SAND -Grey, damp, compact -Trace cobbles/boulders	
					022	GP		1
					023	GP		2
					024	GP		3
							END of HOLE -Target depth reached	4
								5



SUBSURFACE EXPLORATION AND TEST REPORT		Campbell Highway		SOURCE/TP#: 899-5761				
Graceland		Gravel Exploration, km 382.4 RHS		PROJECT NO: 552-202104				
CAT 320CL		Coordinates: Z08V N6884202m E610527m		ELEVATION: m				
SAMPLE TYPE		<input type="checkbox"/> UNDISTURBED <input checked="" type="checkbox"/> DCPT <input type="checkbox"/> AUGER <input type="checkbox"/> BULK <input checked="" type="checkbox"/> SPT <input type="checkbox"/> CORE						
ELEV. (m)	★ Percent Fines ★ ◆ Percent Sand ◆ ■ Percent Gravel ■		Sample Type	Sample #	SOIL SYMBOL	DCPT/SPT Blows/30cm	SOIL DESCRIPTION	Depth (m)
	PLASTIC M.C LIQUID 0 20 40 60 80 100							
							ORGANICS - Silt, roots and ash -Brown/grey, dry, very loose	
							POORLY GRADED SAND with GRAVEL -Grey, damp, loose, sub-angular to sub-rounded -Trace cobbles	
					019	SP		1
					020	SP	-More cobbles, up to 300mm size	2
					021	SP		3
							END of HOLE -Target depth reached	4
								5

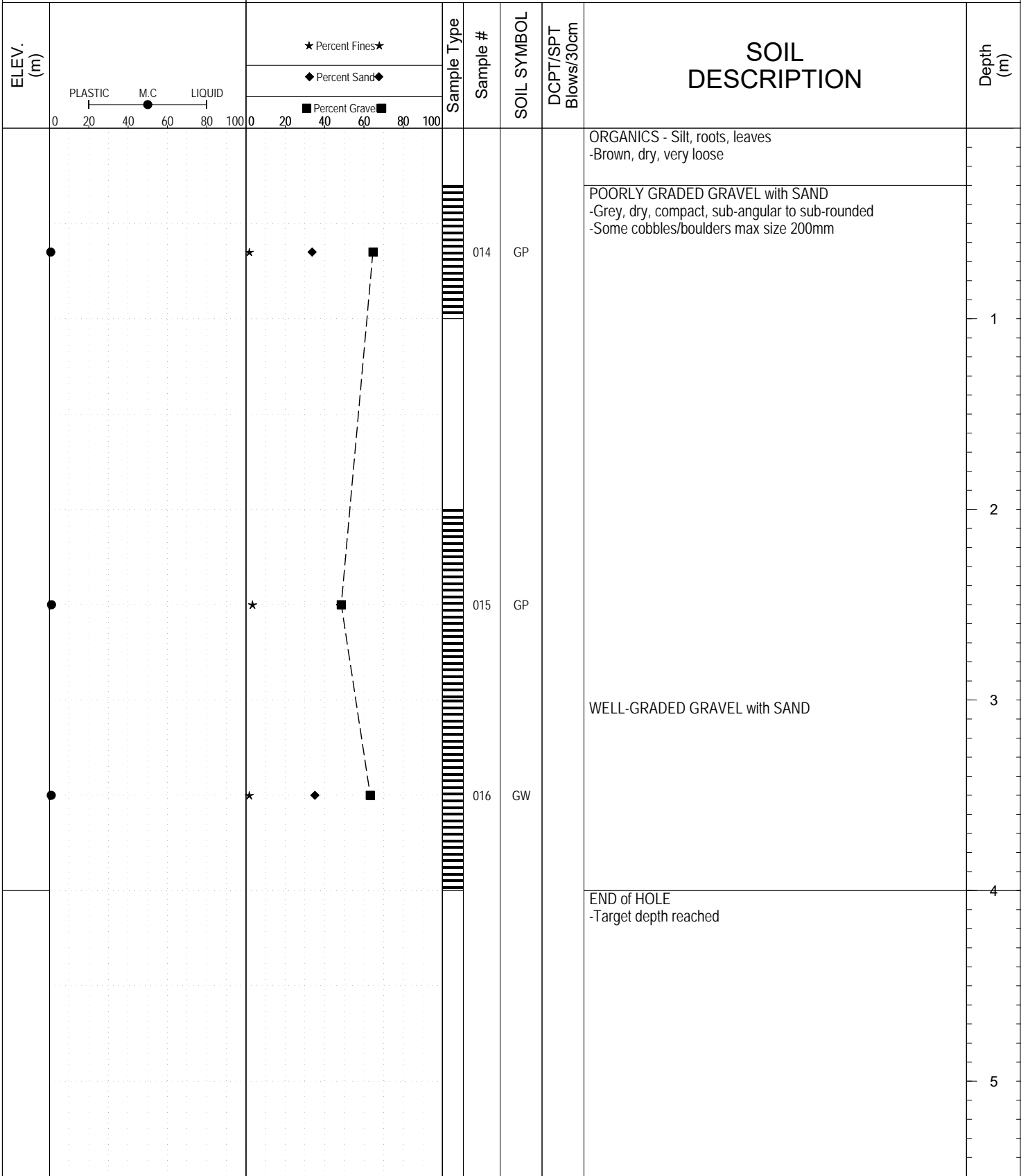


SUBSURFACE EXPLORATION AND TEST REPORT		Campbell Highway		SOURCE/TP#: 899-5762					
Graceland		Gravel Exploration, km 382.4 RHS		PROJECT NO: 552-202104					
CAT 320CL		Coordinates: Z08V N6884147m E610628m		ELEVATION: m					
SAMPLE TYPE		<input type="checkbox"/> UNDISTURBED <input type="checkbox"/> DCPT <input checked="" type="checkbox"/> AUGER <input type="checkbox"/> BULK <input checked="" type="checkbox"/> SPT <input type="checkbox"/> CORE							
ELEV. (m)	PLASTIC M.C LIQUID 0 20 40 60 80 100	★ Percent Fines ★ ◆ Percent Sand ◆ ■ Percent Gravel ■		Sample Type	Sample #	SOIL SYMBOL	DCPT/SPT Blows/30cm	SOIL DESCRIPTION	Depth (m)
		0 20 40 60 80 100							
								ORGANICS - silt, roots, leaves -Brown, dry, very loose	
								WELL-GRADED SAND with SILT and GRAVEL -Grey, dry, compact	
					017	SW-SM			1
								WELL-GRADED GRAVEL with SILT and SAND -Grey, dry, hard	
					018	GW-GM			2
								END of HOLE -Refusal due to rock	3
									4
									5



SUBSURFACE EXPLORATION AND TEST REPORT		Campbell Highway	SOURCE/TP#: 899-5763
Graceland		Gravel Exploration, km 382.4 RHS	PROJECT NO: 552-202104
CAT 320CL		Coordinates: Z08V N6884119m E610573m	ELEVATION: m

SAMPLE TYPE UNDISTURBED DCPT AUGER BULK SPT CORE



Highways and Public Works
Transportation Engineering Branch

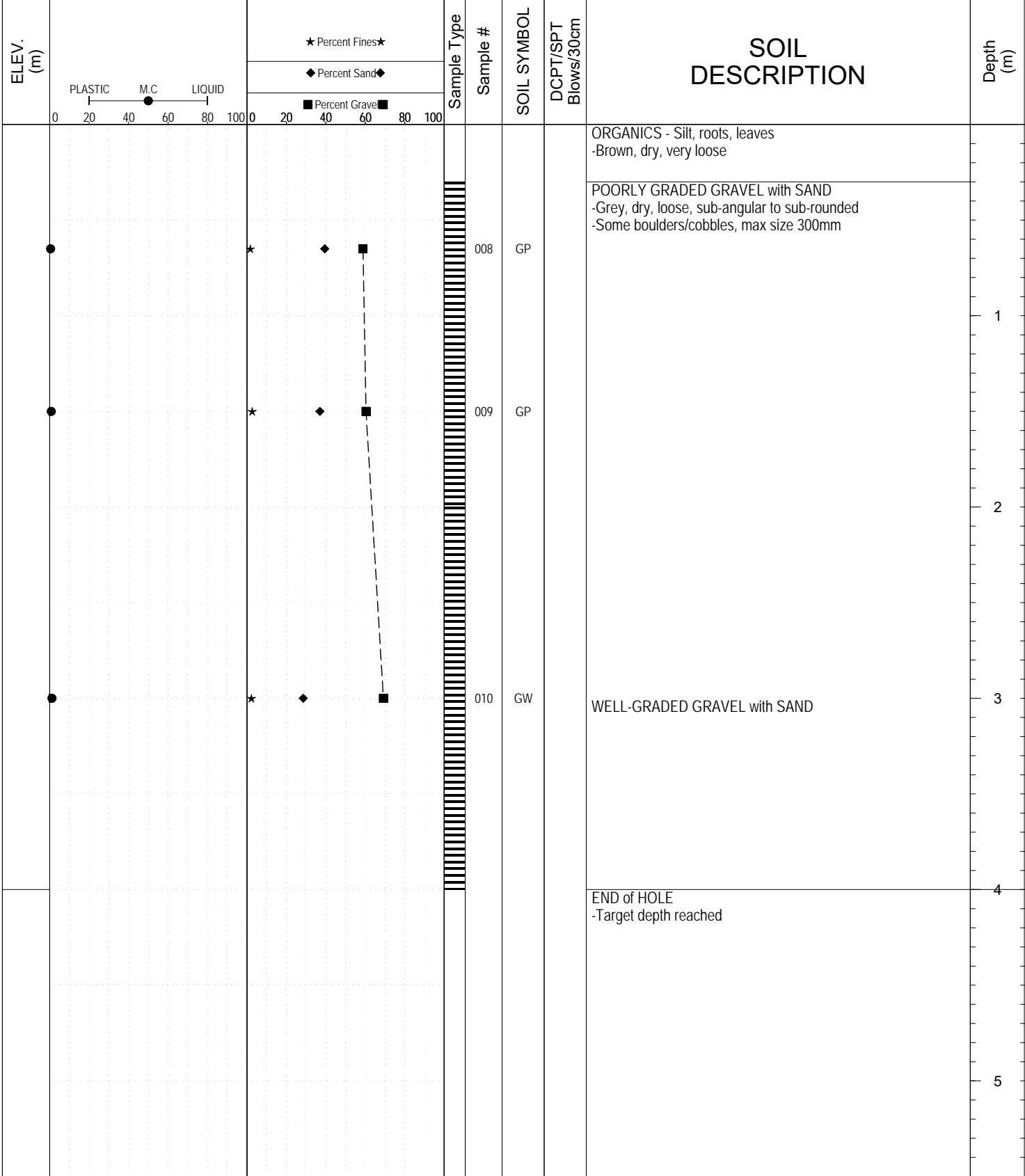
LOGGED BY: Dave Lorenzi	Termination Depth: 4m
COMPILED BY: R.Stilwell	Complete: 10/4/2016 3:25:00 PM
REVIEWED BY:	Pit #: 105 K-01 Page 1 of 1

SUBSURFACE EXPLORATION AND TEST REPORT		Campbell Highway		SOURCE/TP#: 899-5764					
Graceland		Gravel Exploration, km 382.4 RHS		PROJECT NO: 552-202104					
CAT 320CL		Coordinates: Z08V N6884076m E610510m		ELEVATION: m					
SAMPLE TYPE		<input type="checkbox"/> UNDISTURBED		<input type="checkbox"/> DCPT					
		<input type="checkbox"/> AUGER		<input type="checkbox"/> BULK					
		<input checked="" type="checkbox"/> SPT		<input type="checkbox"/> CORE					
ELEV. (m)	★ Percent Fines★ ◆ Percent Sand◆ ■ Percent Gravel■			Sample Type	Sample #	SOIL SYMBOL	DCPT/SPT Blows/30cm	SOIL DESCRIPTION	Depth (m)
	PLASTIC 0 20 40 60 80 100 M.C. LIQUID	0 20 40 60 80 100	0 20 40 60 80 100						
								ORGANICS - Silt, roots -Brown, dry, very loose	
					011	GW		WELL-GRADED GRAVEL with SAND -Grey, dry, compact, sub-angular to sub-rounded -Some cobbles/boulders, max size 200mm	1
					012	GP		POORLY GRADED GRAVEL with SAND	2
					013	GW		WELL-GRADED GRAVEL with SAND	3
								END of HOLE -Target depth reached	4
									5



SUBSURFACE EXPLORATION AND TEST REPORT		Campbell Highway	SOURCE/TP#: 899-5765
Graceland		Gravel Exploration, km 382.4 RHS	PROJECT NO: 552-202104
CAT 320CL		Coordinates: Z08V N6884025m E610474m	ELEVATION: m

SAMPLE TYPE UNDISTURBED DCPT AUGER BULK SPT CORE

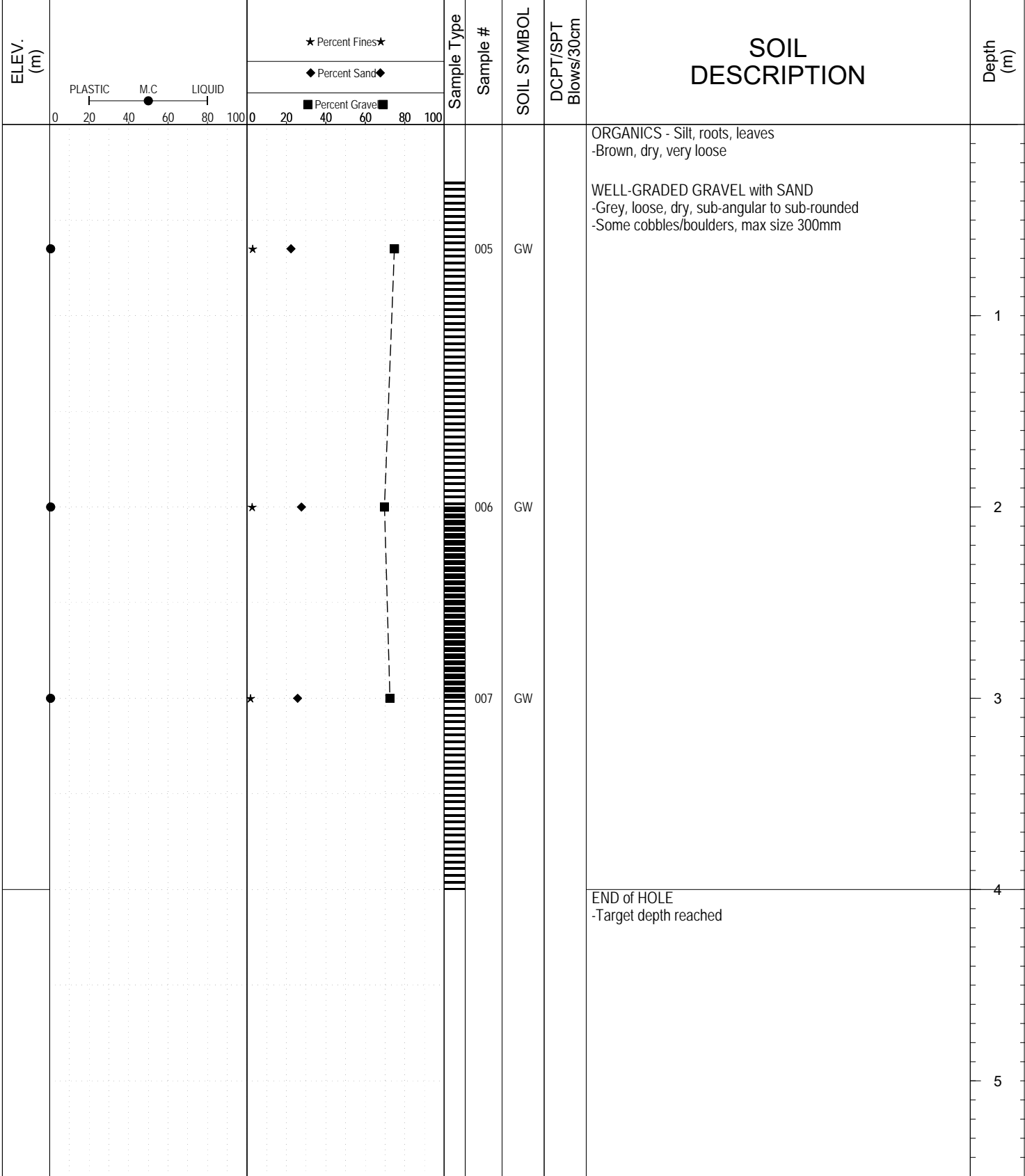


Highways and Public Works
Transportation Engineering Branch

LOGGED BY: Dave Lorenzi	Termination Depth: 4m
COMPILED BY: R.Stilwell	Complete: 10/4/2016 4:55:00 PM
REVIEWED BY:	Pit #: 105 K-01 Page 1 of 1

SUBSURFACE EXPLORATION AND TEST REPORT		Campbell Highway	SOURCE/TP#: 899-5766
Graceland		Gravel Exploration, km 382.4 RHS	PROJECT NO: 552-202104
CAT 320CL		Coordinates: Z08V N6884063m E610677m	ELEVATION: m

SAMPLE TYPE UNDISTURBED DCPT AUGER BULK SPT CORE



Highways and Public Works
Transportation Engineering Branch

LOGGED BY: Dave Lorenzi	Termination Depth: 4m
COMPILED BY: R.Stilwell	Complete: 10/4/2016 5:15:00 PM
REVIEWED BY:	Pit #: 105 K-01 Page 1 of 1

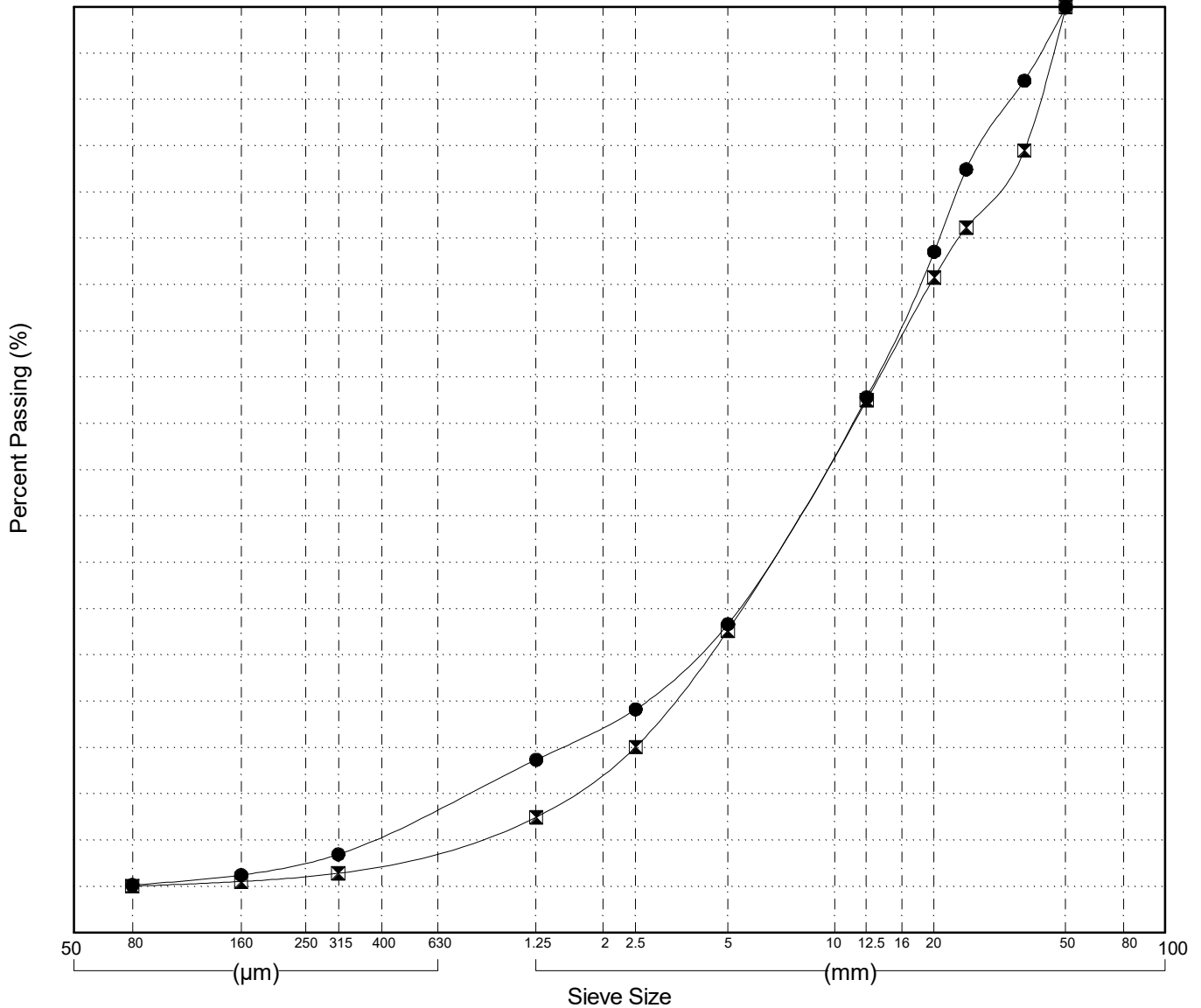
SUBSURFACE EXPLORATION AND TEST REPORT		Campbell Highway		SOURCE/TP#: 899-5767					
Graceland		Gravel Exploration, km 382.4 RHS		PROJECT NO: 552-202104					
CAT 320CL		Coordinates: Z08V N6884052m E610634m		ELEVATION: m					
SAMPLE TYPE		<input type="checkbox"/> UNDISTURBED <input checked="" type="checkbox"/> DCPT <input type="checkbox"/> AUGER <input type="checkbox"/> BULK <input checked="" type="checkbox"/> SPT <input type="checkbox"/> CORE							
ELEV. (m)	PLASTIC M.C LIQUID 0 20 40 60 80 100	★ Percent Fines★ ◆ Percent Sand◆ ■ Percent Gravel■		Sample Type	Sample #	SOIL SYMBOL	DCPT/SPT Blows/30cm	SOIL DESCRIPTION	Depth (m)
					001	GW		ORGANICS - Silt, roots, leaves -Brown/orange, dry, loose	
					002	GP		WELL-GRADED GRAVEL with SAND -Grey, compact, dry -Trace cobble/boulder, max size 300mm	1
					003	GW		END of HOLE -Target depth reached	2
					004	SP			3
									4
									5
		Highways and Public Works Transportation Engineering Branch				LOGGED BY: Dave Lorenzi		Termination Depth: 4m	
						COMPILED BY: R.Stilwell		Complete: 10/4/2016 5:35:00 PM	
						REVIEWED BY:		Pit #: 105 K-01 Page 1 of 1	

GRAIN SIZE ANALYSIS	Gravel Exploration	SOURCE/TP#: 909-5757
Graceland	km 382.4 RHS	PROJECT NO: 552-202104
CAT 320CL	Coordinates: Z08V N6883991m E610531m	ELEVATION: m

Master Revised July 2013

Field#	Lab#	Depth	Classification	%H2O	LL	PL	PI	Cc	Cu											
● 030	662	1.0 to 2.0	WELL-GRADED GRAVEL with SILT and SAND(GW-GM)	0.5	NP	NP	NP	2.7	34.5											
☒ 031	663	3.0 to 4.0	WELL-GRADED GRAVEL with SILT and SAND(GW-GM)	0.8	NP	NP	NP	1.8	19.2											
Field#	Lab#	100.0	80.0	50.0	25.0	20.0	12.5	10.0	5.0	2.5	1.25	0.630	0.315	0.160	0.080	%Breakdown				
● 030	662	100.0	100.0	100.0	82.5	73.6	57.8	52.2	33.3	24.1	18.7	13.6	8.5	6.2	5.2	Gravel	Sand	Silt	Clay	
☒ 031	663	100.0	100.0	100.0	76.2	70.8	57.5	51.8	32.6	20.1	12.5	9.5	6.4	5.5	5.1	66.7	28.2	5.2		

Silt	Sand			Gravel	
	Fine	Medium	Coarse	Fine	Coarse



Highways and Public Works
Transportation Engineering Branch

LOGGED BY: Dave Lorenzi
COMPILED BY: R.Stilwell
REVIEWED BY:

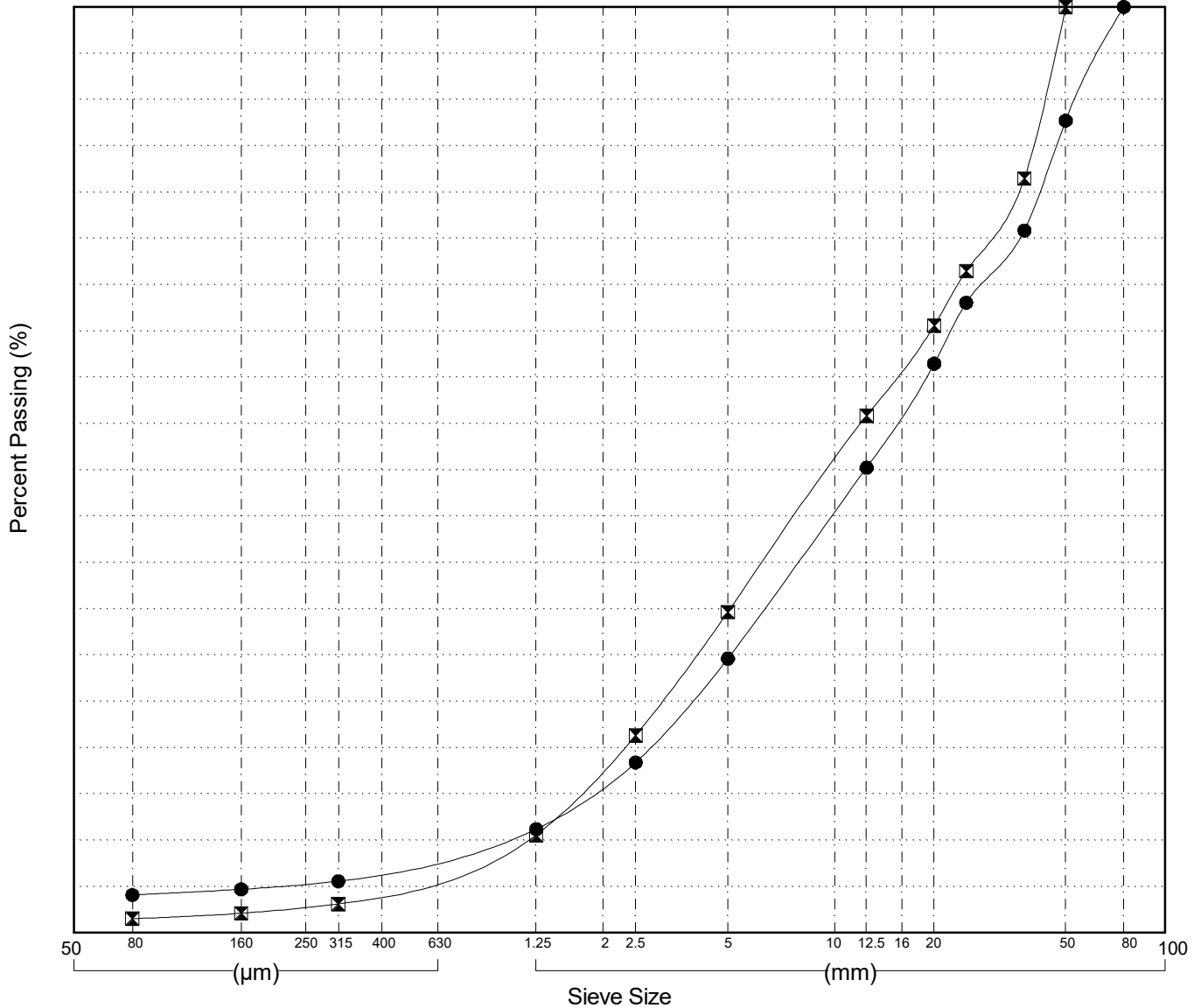
Pit # 105 K-01
Complete: 10/4/2016 11:50:00 AM

GRAIN SIZE ANALYSIS	Gravel Exploration	SOURCE/TP#: 909-5758
Graceland	km 382.4 RHS	PROJECT NO: 552-202104
CAT 320CL	Coordinates: Z08V N6884024m E610549m	ELEVATION: m

Master Revised July 2013

Field#	Lab#	Depth	Classification	%H2O	LL	PL	PI	Cc	Cu											
● 028	660	1.0 to 2.0	WELL-GRADED GRAVEL with SAND(GW)	1.8	NP	NP	NP	1.3	20.2											
☒ 029	661	3.0 to 4.0	POORLY GRADED GRAVEL with SAND(GP)	3.0	NP	NP	NP	0.8	13.6											
Field#	Lab#	100.0	80.0	50.0	25.0	20.0	12.5	10.0	5.0	2.5	1.25	0.630	0.315	0.160	0.080	% Breakdown				
● 028	660	100.0	100.0	87.7	68.1	61.5	50.2	45.5	29.6	18.4	11.2	8.4	5.6	4.7	4.1	Gravel	Sand	Silt	Clay	
☒ 029	661	100.0	100.0	100.0	71.5	65.6	55.9	51.0	34.7	21.3	10.6	6.9	3.1	2.1	1.5	70.4	25.5	4.1		

Silt	Sand			Gravel	
	Fine	Medium	Coarse	Fine	Coarse



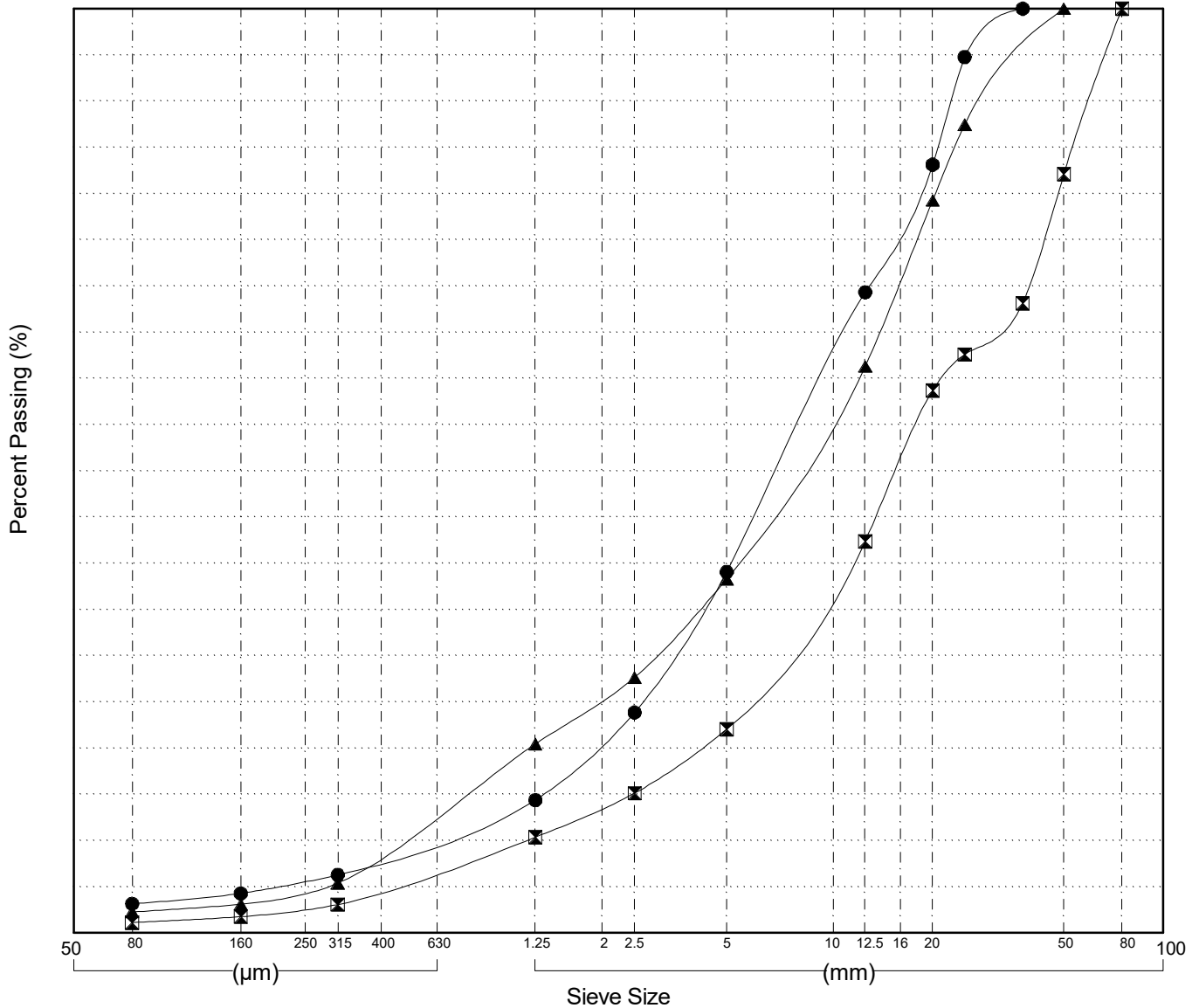
GRAIN SIZE ANALYSIS	Gravel Exploration	SOURCE/TP#: 909-5759
Graceland	km 382.4 RHS	PROJECT NO: 552-202104
CAT 320CL	Coordinates: Z08V N6884008m E610439m	ELEVATION: m

Master Revised July 2013

Field#	Lab#	Depth	Classification	%H2O	LL	PL	PI	Cc	Cu
● 025	657	0.2 to 1.0	WELL-GRADED GRAVEL with SAND(GW)	0.5	NP	NP	NP	1.9	15.7
☒ 026	658	1.0 to 2.0	WELL-GRADED GRAVEL with SAND(GW)	0.5	NP	NP	NP	1.9	18.5
▲ 027	659	3.0 to 4.0	WELL-GRADED GRAVEL with SAND(GW)	1.1	NP	NP	NP	1.5	24.6

Field#	Lab#	% PASSING	Sieve Size (mm)													% Breakdown			
			100.0	80.0	50.0	25.0	20.0	12.5	10.0	5.0	2.5	1.25	0.630	0.315	0.160	0.080	Gravel	Sand	Silt
● 025	657	100.0	100.0	100.0	94.8	83.1	69.3	62.3	39.1	23.9	14.4	10.4	6.3	4.3	3.2	60.9	35.9	3.2	
☒ 026	658	100.0	100.0	82.1	62.6	58.7	42.4	37.7	22.0	15.1	10.4	6.7	3.1	1.8	1.1	78.0	20.9	1.1	
▲ 027	659	100.0	100.0	100.0	87.4	79.3	61.3	56.0	38.3	27.6	20.4	13.0	5.4	3.1	2.3	61.7	36.0	2.3	

Silt	Sand			Gravel	
	Fine	Medium	Coarse	Fine	Coarse



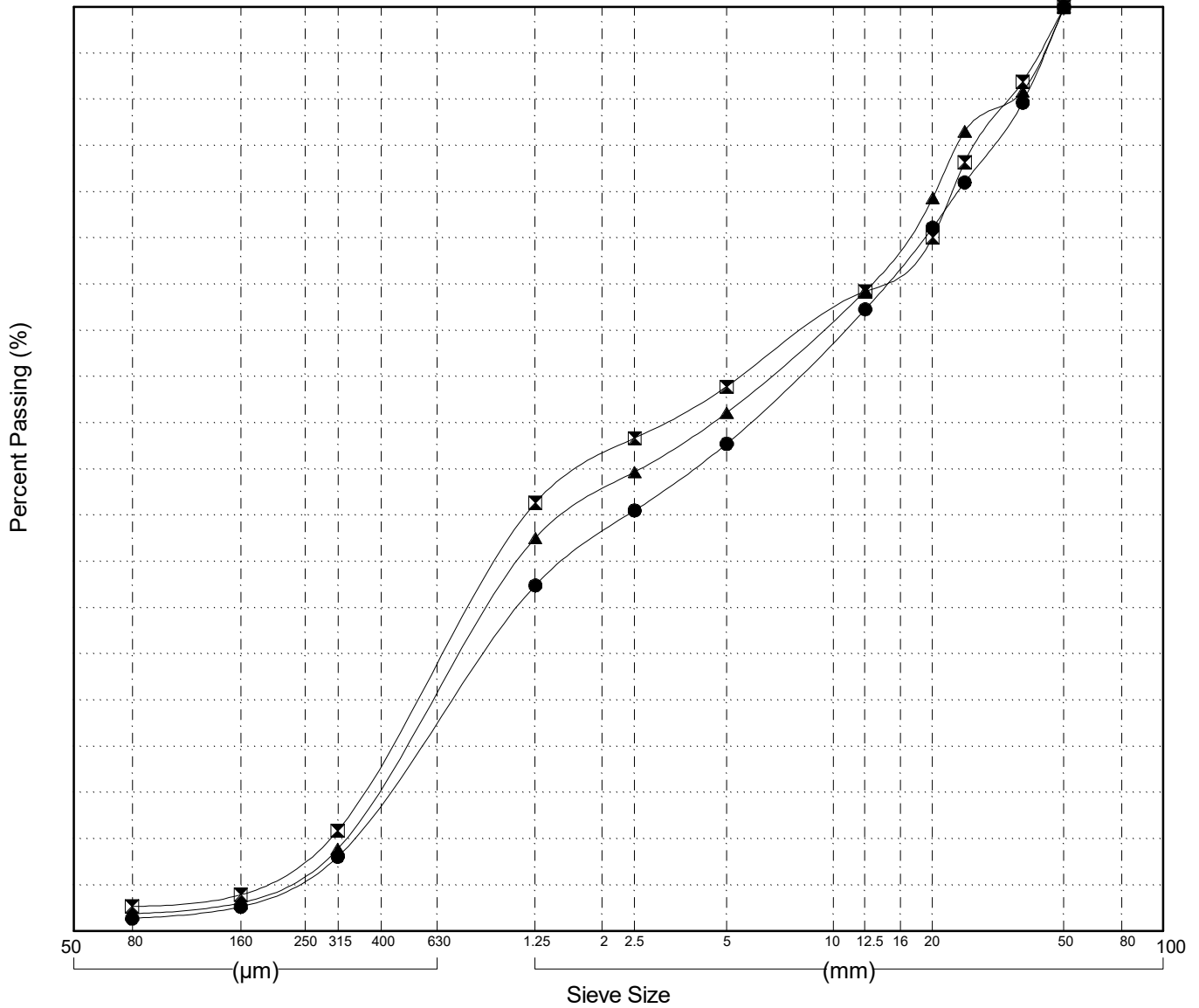
GRAIN SIZE ANALYSIS	Gravel Exploration	SOURCE/TP#: 909-5761
Graceland	km 382.4 RHS	PROJECT NO: 552-202104
CAT 320CL	Coordinates: Z08V N6884202m E610527m	ELEVATION: m

Master Revised July 2013

Field#	Lab#	Depth	Classification	%H2O	LL	PL	PI	Cc	Cu
● 019	651	0.2 to 1.0	POORLY GRADED SAND with GRAVEL(SP)	0.8	NP	NP	NP	0.3	22.3
☒ 020	652	1.0 to 2.0	POORLY GRADED SAND with GRAVEL(SP)	1.3	NP	NP	NP	0.3	18.2
▲ 021	653	2.0 to 3.0	POORLY GRADED SAND with GRAVEL(SP)	1.0	NP	NP	NP	0.3	19.2

Field#	Lab#	% PASSING	Sieve Size (mm)													% Breakdown			
			100.0	80.0	50.0	25.0	20.0	12.5	10.0	5.0	2.5	1.25	0.630	0.315	0.160	0.080	Gravel	Sand	Silt
● 019	651	100.0	100.0	100.0	100.0	81.0	76.1	67.3	63.9	52.7	45.5	37.4	22.8	8.1	2.7	1.4	47.3	51.3	1.4
☒ 020	652	100.0	100.0	100.0	83.2	75.1	69.2	66.9	58.9	53.3	46.3	28.7	10.9	3.9	2.7	41.1	56.2	2.7	
▲ 021	653	100.0	100.0	100.0	86.5	79.3	69.3	66.2	56.1	49.7	42.5	25.8	8.9	3.1	1.9	43.9	54.2	1.9	

Silt	Sand			Gravel	
	Fine	Medium	Coarse	Fine	Coarse

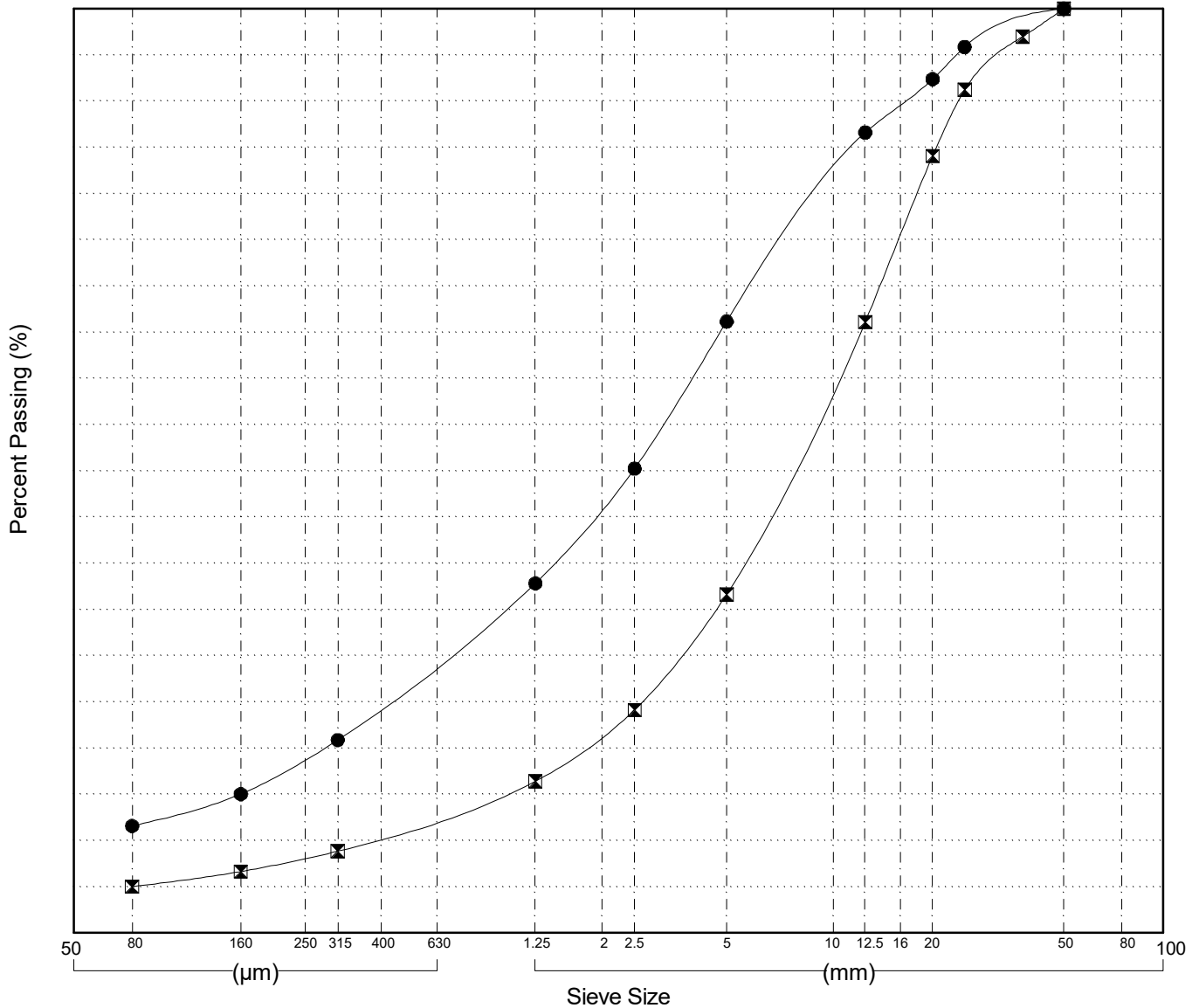


GRAIN SIZE ANALYSIS	Gravel Exploration	SOURCE/TP#: 909-5762
Graceland	km 382.4 RHS	PROJECT NO: 552-202104
CAT 320CL	Coordinates: Z08V N6884147m E610628m	ELEVATION: m

Master Revised July 2013

Field#	Lab#	Depth	Classification	%H2O	LL	PL	PI	Cc	Cu											
● 017	649	0.3 to 1.0	WELL-GRADED SAND with SILT and GRAVEL(SW-SM)	2.6	NP	NP	NP	2.2	70.0											
☒ 018	650	1.0 to 2.0	WELL-GRADED GRAVEL with SILT and SAND(GW-GM)	0.7	NP	NP	NP	2.9	26.3											
Field#	Lab#	100.0	80.0	50.0	25.0	20.0	12.5	10.0	5.0	2.5	1.25	0.630	0.315	0.160	0.080	% Breakdown				
● 017	649	100.0	100.0	100.0	95.9	92.4	86.6	81.9	66.2	50.2	37.8	29.4	20.9	15.0	11.6	Gravel	Sand	Silt	Clay	
☒ 018	650	100.0	100.0	100.0	91.2	84.1	66.1	59.3	36.6	24.1	16.4	12.6	8.8	6.6	5.0	63.4	31.6	5.0		

Silt	Sand			Gravel	
	Fine	Medium	Coarse	Fine	Coarse



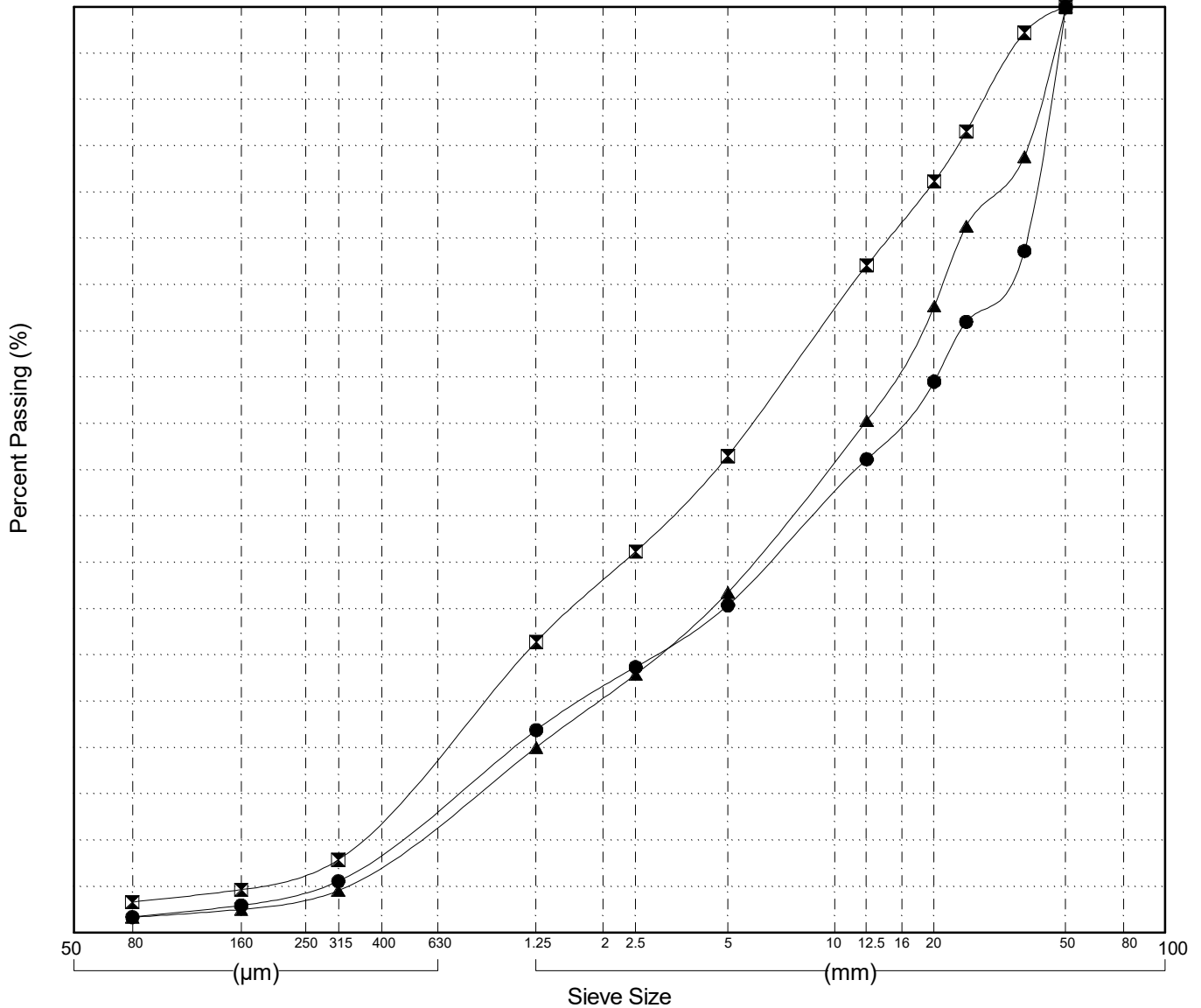
GRAIN SIZE ANALYSIS	Gravel Exploration	SOURCE/TP#: 899-5763
Graceland	km 382.4 RHS	PROJECT NO: 552-202104
CAT 320CL	Coordinates: Z08V N6884119m E610573m	ELEVATION: m

Master Revised July 2013

Field#	Lab#	Depth	Classification	%H2O	LL	PL	PI	Cc	Cu
● 014	646	0.3 to 1.0	POORLY GRADED GRAVEL with SAND(GP)	0.6	NP	NP	NP	0.9	44.4
☒ 015	647	2.0 to 3.0	POORLY GRADED GRAVEL with SAND(GP)	1.0	NP	NP	NP	0.5	19.9
▲ 016	648	3.0 to 4.0	WELL-GRADED GRAVEL with SAND(GW)	0.9	NP	NP	NP	1.1	29.2

Field#	Lab#	% PASSING															% Breakdown			
			100.0	80.0	50.0	25.0	20.0	12.5	10.0	5.0	2.5	1.25	0.630	0.315	0.160	0.080	Gravel	Sand	Silt	Clay
● 014	646	100.0	100.0	100.0	100.0	66.0	59.5	51.2	47.5	35.4	28.7	21.9	13.8	5.6	3.0	1.7	64.6	33.7	1.7	
☒ 015	647	100.0	100.0	100.0	86.5	81.2	72.1	67.3	51.5	41.2	31.4	19.7	7.9	4.7	3.3	48.5	48.2	3.3		
▲ 016	648	100.0	100.0	100.0	76.3	67.7	55.3	51.0	36.8	27.9	20.0	12.3	4.6	2.5	1.7	63.2	35.1	1.7		

Silt	Sand			Gravel	
	Fine	Medium	Coarse	Fine	Coarse



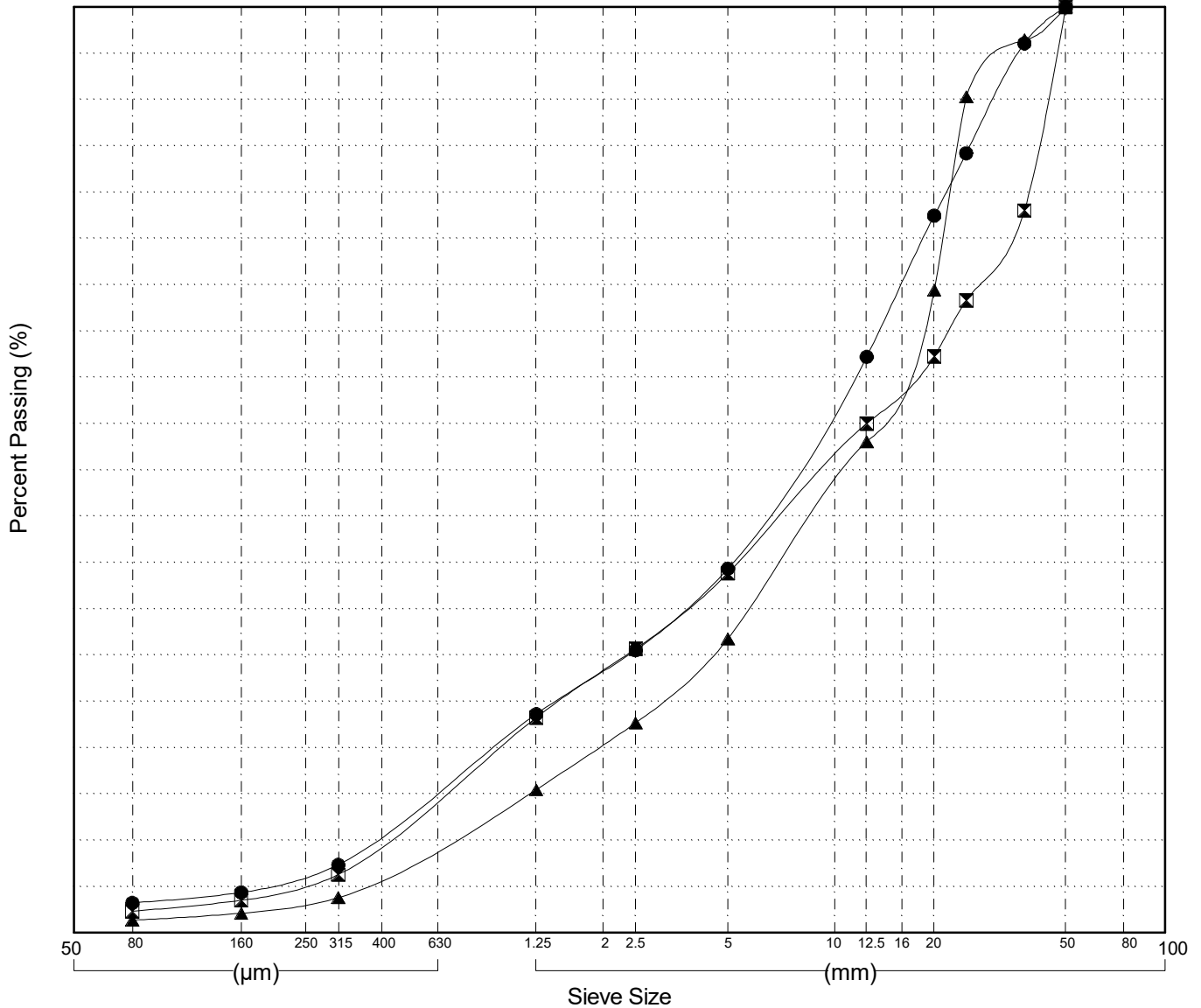
GRAIN SIZE ANALYSIS	Gravel Exploration	SOURCE/TP#: 899-5764
Graceland	km 382.4 RHS	PROJECT NO: 552-202104
CAT 320CL	Coordinates: Z08V N6884076m E610510m	ELEVATION: m

Master Revised July 2013

Field#	Lab#	Depth	Classification	%H2O	LL	PL	PI	Cc	Cu
● 011	643	0.2 to 1.0	WELL-GRADED GRAVEL with SAND(GW)	1.0	NP	NP	NP	1.3	28.9
☒ 012	644	2.0 to 3.0	POORLY GRADED GRAVEL with SAND(GP)	0.8	NP	NP	NP	0.7	40.6
▲ 013	645	3.0 to 4.0	WELL-GRADED GRAVEL with SAND(GW)	0.7	NP	NP	NP	1.8	23.3

Field#	Lab#	% PASSING	Sieve Size (mm)													% Breakdown			
			100.0	80.0	50.0	25.0	20.0	12.5	10.0	5.0	2.5	1.25	0.630	0.315	0.160	0.080	Gravel	Sand	Silt
● 011	643	100.0	100.0	100.0	100.0	84.2	77.5	62.2	56.9	39.3	30.5	23.6	15.5	7.4	4.4	3.2	60.7	36.1	3.2
☒ 012	644	100.0	100.0	100.0	68.3	62.3	55.0	51.3	38.8	30.7	23.3	14.8	6.3	3.5	2.3	61.2	36.5	2.3	
▲ 013	645	100.0	100.0	100.0	90.3	69.4	53.0	48.1	31.7	22.7	15.4	9.7	3.8	2.1	1.4	68.3	30.4	1.4	

Silt	Sand			Gravel	
	Fine	Medium	Coarse	Fine	Coarse



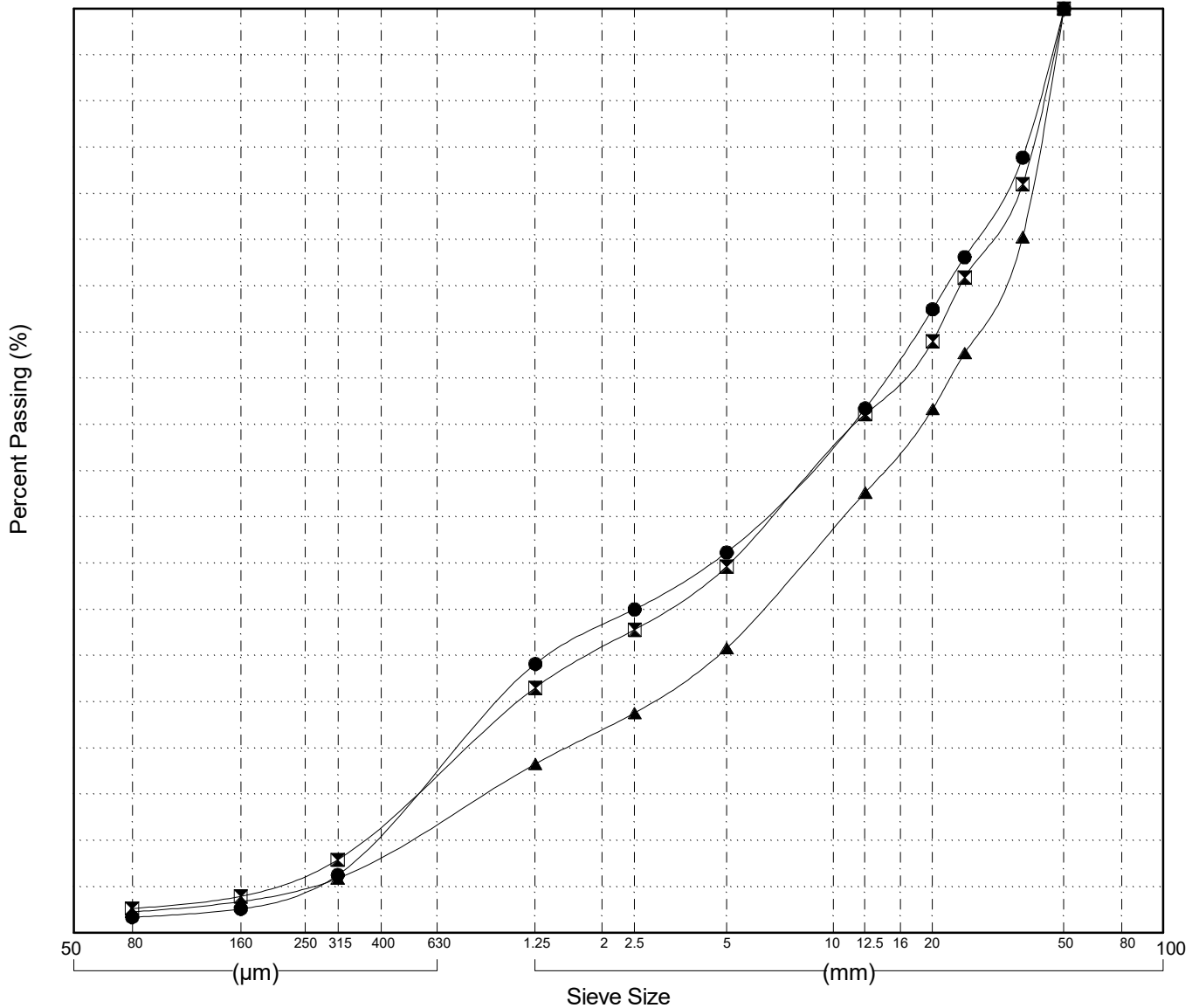
GRAIN SIZE ANALYSIS	Gravel Exploration	SOURCE/TP#: 899-5765
Graceland	km 382.4 RHS	PROJECT NO: 552-202104
CAT 320CL	Coordinates: Z08V N6884025m E610474m	ELEVATION: m

Master Revised July 2013

Field#	Lab#	Depth	Classification	%H2O	LL	PL	PI	Cc	Cu
● 008	640	0.3 to 1.0	POORLY GRADED GRAVEL with SAND(GP)	0.5	NP	NP	NP	0.3	36.5
☒ 009	641	1.0 to 2.0	POORLY GRADED GRAVEL with SAND(GP)	0.8	NP	NP	NP	0.6	42.8
▲ 010	642	2.0 to 3.0	WELL-GRADED GRAVEL with SAND(GW)	1.2	NP	NP	NP	1.7	45.5

Field#	Lab#	% PASSING	Sieve Size (mm)													% Breakdown			
			100.0	80.0	50.0	25.0	20.0	12.5	10.0	5.0	2.5	1.25	0.630	0.315	0.160	0.080	Gravel	Sand	Silt
● 008	640	100.0	100.0	100.0	100.0	73.1	67.5	56.8	53.2	41.2	35.0	29.1	17.8	6.3	2.6	1.7	58.8	39.5	1.7
☒ 009	641	100.0	100.0	100.0	70.9	64.0	56.1	52.3	39.6	32.8	26.5	17.3	7.9	4.0	2.7	60.4	37.0	2.7	
▲ 010	642	100.0	100.0	100.0	62.7	56.7	47.7	43.8	30.8	23.8	18.3	12.1	5.9	3.4	2.3	69.2	28.5	2.3	

Silt	Sand			Gravel	
	Fine	Medium	Coarse	Fine	Coarse



Highways and Public Works
Transportation Engineering Branch

LOGGED BY: Dave Lorenzi
COMPILED BY: R.Stilwell
REVIEWED BY:

Pit # 105 K-01
Complete: 10/4/2016 4:55:00 PM

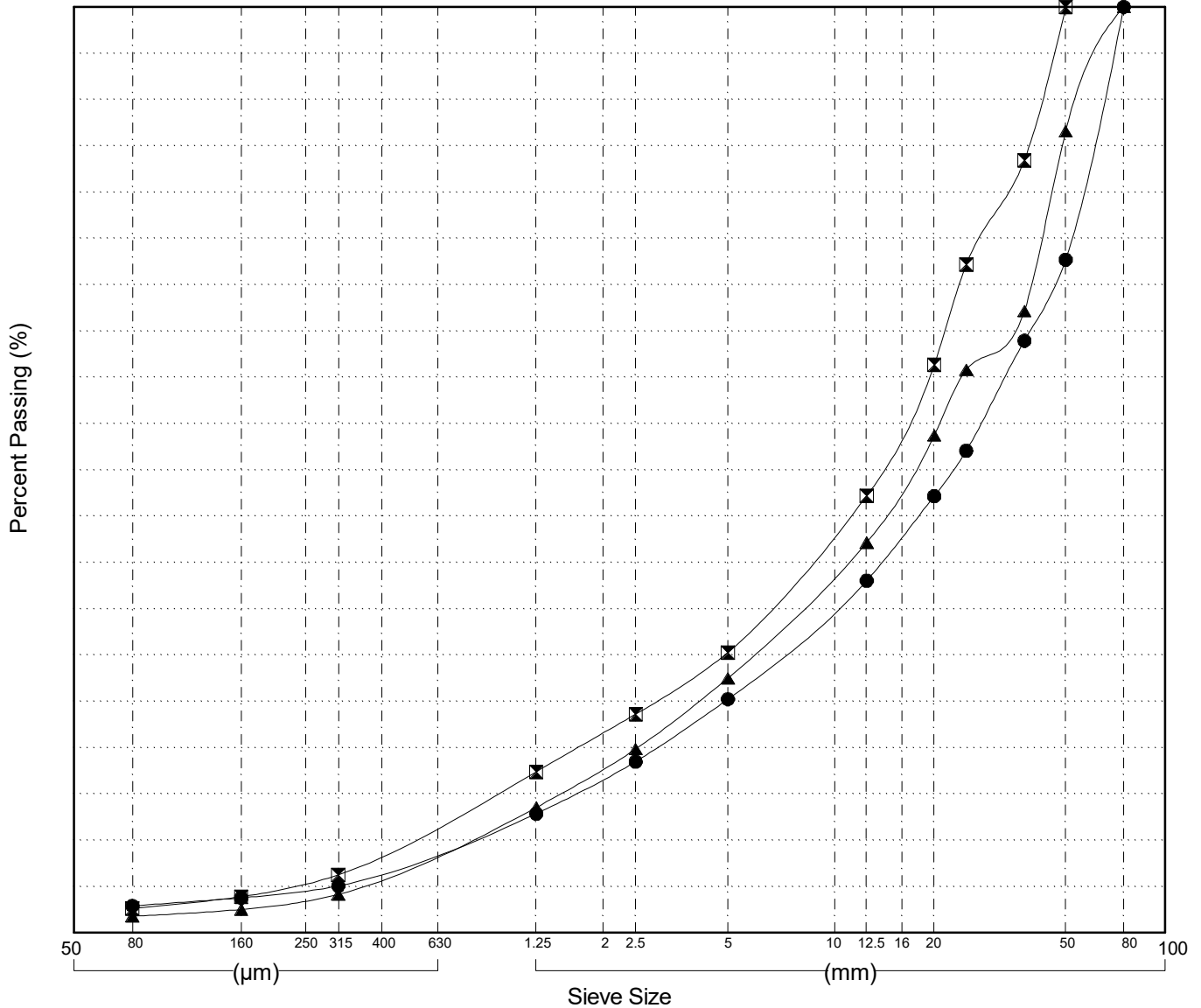
GRAIN SIZE ANALYSIS	Gravel Exploration	SOURCE/TP#: 899-5766
Graceland	km 382.4 RHS	PROJECT NO: 552-202104
CAT 320CL	Coordinates: Z08V N6884063m E610677m	ELEVATION: m

Master Revised July 2013

Field#	Lab#	Depth	Classification	%H2O	LL	PL	PI	Cc	Cu
● 005	637	0.3 to 1.0	WELL-GRADED GRAVEL with SAND(GW)	0.5	NP	NP	NP	1.9	43.6
☒ 006	638	1.0 to 2.0	WELL-GRADED GRAVEL with SAND(GW)	0.5	NP	NP	NP	2.2	38.2
▲ 007	639	2.0 to 3.0	WELL-GRADED GRAVEL with SAND(GW)	0.4	NP	NP	NP	1.7	32.8

Field#	Lab#	% PASSING														% Breakdown			
			100.0	80.0	50.0	25.0	20.0	12.5	10.0	5.0	2.5	1.25	0.630	0.315	0.160	0.080	Gravel	Sand	Silt
● 005	637	100.0	100.0	72.7	52.1	47.2	38.0	35.1	25.2	18.5	12.9	9.0	5.1	3.8	2.9	74.8	22.3	2.9	
☒ 006	638	100.0	100.0	100.0	72.2	61.4	47.2	43.3	30.3	23.6	17.4	11.9	6.3	3.9	2.6	69.7	27.6	2.6	
▲ 007	639	100.0	100.0	86.6	60.8	53.7	42.2	38.8	27.5	19.9	13.5	8.9	4.2	2.5	1.8	72.5	25.7	1.8	

Silt	Sand			Gravel	
	Fine	Medium	Coarse	Fine	Coarse



GRAIN SIZE ANALYSIS	Gravel Exploration	SOURCE/TP#: 899-5767
Graceland	km 382.4 RHS	PROJECT NO: 552-202104
CAT 320CL	Coordinates: Z08V N6884052m E610634m	ELEVATION: m

Master Revised July 2013

Field#	Lab#	Depth	Classification	%H2O	LL	PL	PI	Cc	Cu
● 001	634	0.3 to 1.0	WELL-GRADED GRAVEL with SAND(GW)	0.4	NP	NP	NP	1.3	30.6
☒ 002	635.2	1.0 to 2.0	POORLY GRADED GRAVEL with SAND(GP)	0.5	NP	NP	NP	0.9	19.1
▲ 003	635	2.0 to 3.0	WELL-GRADED GRAVEL with SAND(GW)	0.7	NP	NP	NP	1.1	23.8
★ 004	636	3.0 to 4.0	POORLY GRADED SAND with GRAVEL(SP)	1.2	NP	NP	NP	0.5	20.9

Field#	Lab#	% PASSING	Sieve Size (mm)													% Breakdown			
			100.0	80.0	50.0	25.0	20.0	12.5	10.0	5.0	2.5	1.25	0.630	0.315	0.160	0.080	Gravel	Sand	Silt
● 001	634	100.0	100.0	100.0	100.0	73.9	66.7	51.6	47.8	34.8	26.3	18.4	11.7	4.8	2.9	2.0	65.2	32.8	2.0
☒ 002	635.2	100.0	100.0	100.0	84.5	76.7	64.9	60.4	45.7	33.1	20.4	12.4	4.3	2.9	2.0	54.3	43.7	2.0	
▲ 003	635	100.0	100.0	100.0	87.6	75.7	63.8	59.4	44.8	31.9	19.4	13.3	7.2	5.3	3.9	55.2	40.8	3.9	
★ 004	636	100.0	100.0	100.0	81.8	75.5	70.1	65.8	51.8	41.9	32.5	20.3	8.1	4.1	2.6	48.2	49.2	2.6	

Silt	Sand			Gravel	
	Fine	Medium	Coarse	Fine	Coarse

