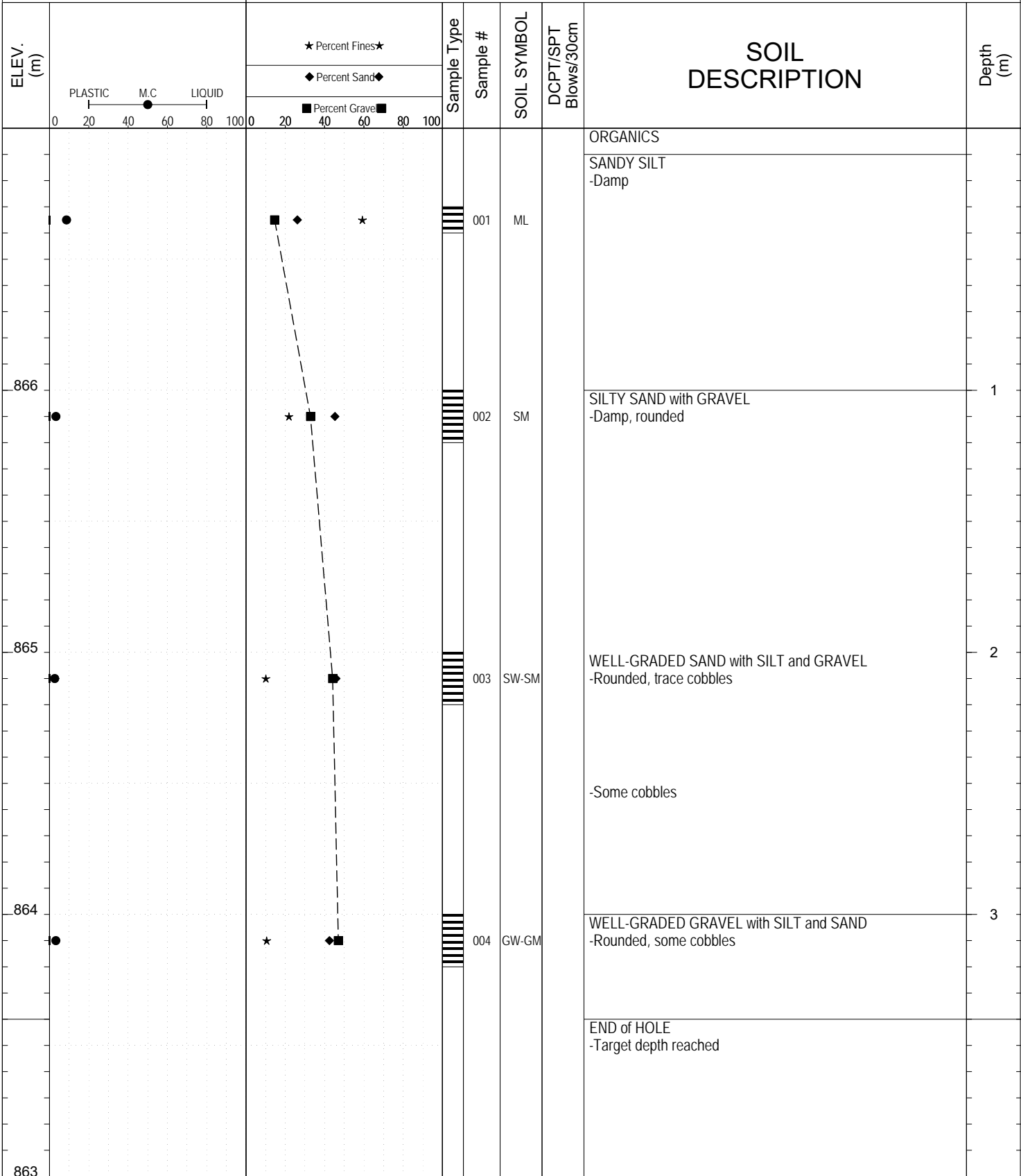


SUBSURFACE EXPLORATION AND TEST REPORT		Alaska Highway	SOURCE/TP#: 906-6560
Source Motors Ltd.		Silver City Exploration, km 1635.8 RHS	PROJECT NO: 552-202101-1001-1-1
Hitachi 200 LC		Coordinates: Z07V N6769236m E644412m	ELEVATION: 867m

SAMPLE TYPE     UNDISTURBED     DCPT     AUGER     BULK     SPT     CORE



Highways and Public Works  
Transportation Engineering Branch

LOGGED BY: K.Elmer	Termination Depth: 3.4m
COMPILED BY: R.Stilwell	Complete: 10/16/2016 3:00:00 PM
REVIEWED BY:	Pit #: 115G-07      Page 1 of 2

SUBSURFACE EXPLORATION AND TEST REPORT	Alaska Highway	SOURCE/TP#: 906-6560
Source Motors Ltd.	Silver City Exploration, km 1635.8 RHS	PROJECT NO: 552-202101-1001-1-1
Hitachi 200 LC	Coordinates: Z07V N6769236m E644412m	ELEVATION: 867m

## PHOTOS



Figure 906-6560.1  
Photo of sample piles from test pit 906-6560



Figure 906-6560.2  
Photo of test pit 906-6560

SUBSURFACE EXPLORATION AND TEST REPORT		Alaska Highway		SOURCE/TP#: 906-6561				
Source Motors Ltd.		Silver City Exploration, km 1635.8 RHS		PROJECT NO: 552-202101-1001-1-1				
Hitachi 200 LC		Coordinates: Z07V N6769345m E644416m		ELEVATION: 868m				
SAMPLE TYPE		<input type="checkbox"/> UNDISTURBED <input type="checkbox"/> DCPT <input checked="" type="checkbox"/> AUGER <input type="checkbox"/> BULK <input checked="" type="checkbox"/> SPT <input type="checkbox"/> CORE						
ELEV. (m)	★ Percent Fines ★ ◆ Percent Sand ◆ ■ Percent Gravel ■		Sample Type	Sample #	SOIL SYMBOL	DCPT/SPT Blows/30cm	SOIL DESCRIPTION	Depth (m)
	PLASTIC      M.C      LIQUID 0      20      40      60      80      100							
867				005	GW		ORGANICS WELL-GRADED GRAVEL with SAND -Rounded, some oxidization  -No oxidization  -Trace cobbles	1
866				006	GW			2
865								3
864							END of HOLE -Target depth reached	



SUBSURFACE EXPLORATION AND TEST REPORT	Alaska Highway	SOURCE/TP#: 906-6561
Source Moters Ltd.	Silver City Exploration, km 1635.8 RHS	PROJECT NO: 552-202101-1001-1-1
Hitachi 200 LC	Coordinates: Z07V N6769345m E644416m	ELEVATION: 868m

## PHOTOS



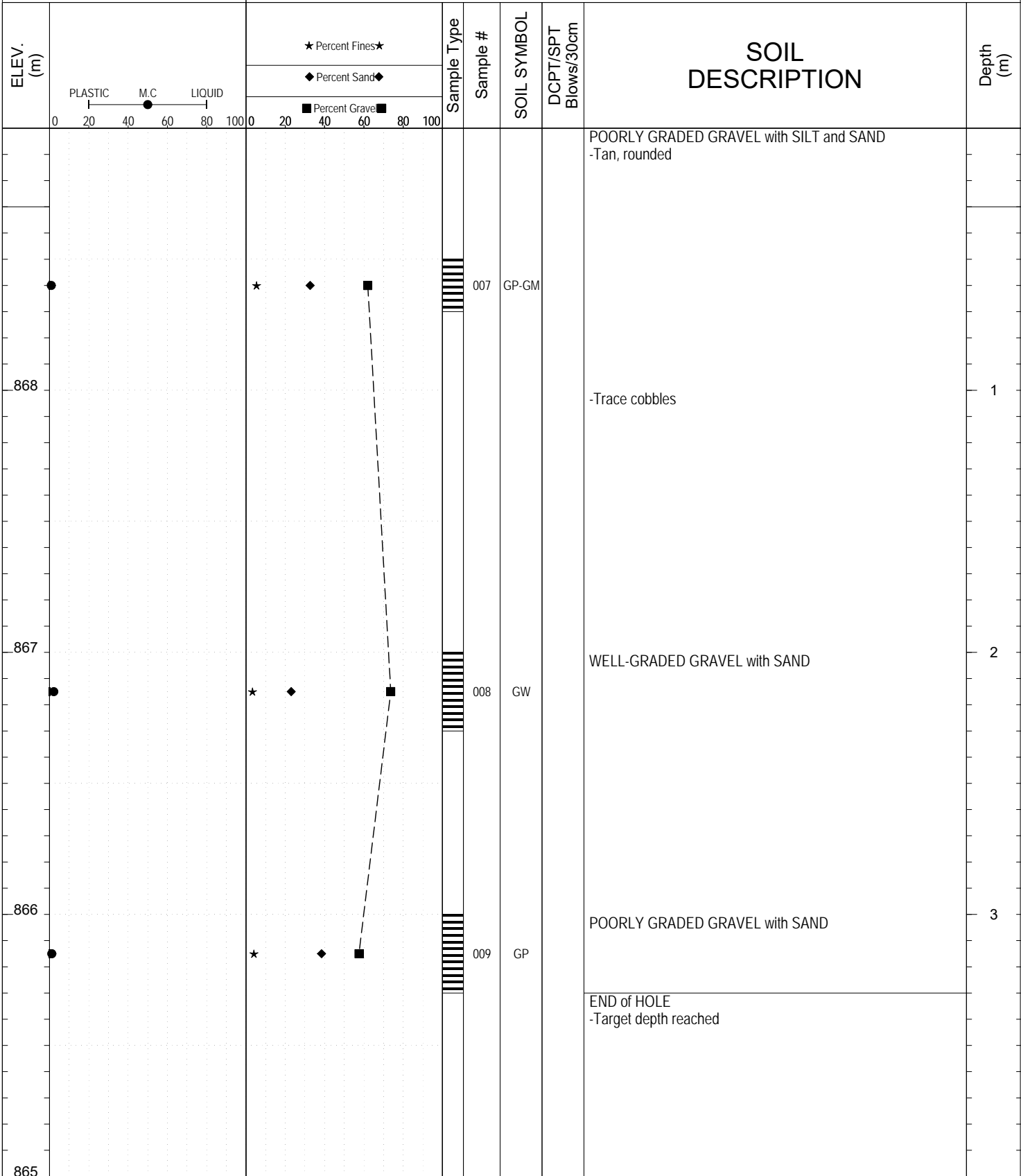
Figure 906-6561.1  
Photo of test pit 906-6561



Figure 906-6561.2  
Photo of waste pile from test pit 906-6561

SUBSURFACE EXPLORATION AND TEST REPORT		Alaska Highway	SOURCE/TP#: 906-6562
Source Motors Ltd.		Silver City Exploration, km 1635.8 RHS	PROJECT NO: 552-202101-1001-1-1
Hitachi 200 LC		Coordinates: Z07V N6769393m E644407m	ELEVATION: 869m

SAMPLE TYPE     UNDISTURBED     DCPT     AUGER     BULK     SPT     CORE



Highways and Public Works  
Transportation Engineering Branch

LOGGED BY: K.Elmer	Termination Depth: 0.3m
COMPILED BY: R.Stilwell	Complete: 10/16/2016 4:20:00 PM
REVIEWED BY:	Pit #: 115G-07      Page 1 of 2

SUBSURFACE EXPLORATION AND TEST REPORT	Alaska Highway	SOURCE/TP#: 906-6562
Source Motors Ltd.	Silver City Exploration, km 1635.8 RHS	PROJECT NO: 552-202101-1001-1-1
Hitachi 200 LC	Coordinates: Z07V N6769393m E644407m	ELEVATION: 869m

## PHOTOS



Figure 906-6562.1  
Photo of test pit 906-6562



Figure 906-6562.2  
Photo of waste piles from test pit 906-6562

SUBSURFACE EXPLORATION AND TEST REPORT		Alaska Highway		SOURCE/TP#: 906-6563		
Source Motors Ltd.		Silver City Exploration, km 1635.8 RHS		PROJECT NO: 552-202101-1001-1-1		
Hitachi 200 LC		Coordinates: Z07V N6769453m E644325m		ELEVATION: 867m		
SAMPLE TYPE		<input type="checkbox"/> UNDISTURBED <input checked="" type="checkbox"/> DCPT <input checked="" type="checkbox"/> AUGER <input checked="" type="checkbox"/> BULK <input checked="" type="checkbox"/> SPT <input type="checkbox"/> CORE				
ELEV. (m)		★ Percent Fines★ ◆ Percent Sand◆ ■ Percent Gravel■		Sample Type Sample # SOIL SYMBOL DCPT/SPT Blows/30cm	SOIL DESCRIPTION Depth (m)	
866				010 SM	ORGANICS SILTY SAND with GRAVEL  POORLY GRADED GRAVEL with SILT and SAND -Rounded	1
865				011 GP-GM		2
864						3
863					END of HOLE -Target depth reached	



SUBSURFACE EXPLORATION AND TEST REPORT	Alaska Highway	SOURCE/TP#: 906-6563
Source Motors Ltd.	Silver City Exploration, km 1635.8 RHS	PROJECT NO: 552-202101-1001-1-1
Hitachi 200 LC	Coordinates: Z07V N6769453m E644325m	ELEVATION: 867m

## PHOTOS



Figure 906-6563.1  
Photo of waste pile from test pit 906-6563



Figure 906-6563.2  
Photo of test pit 906-6563

SUBSURFACE EXPLORATION AND TEST REPORT		Alaska Highway		SOURCE/TP#: 906-6564				
Source Motors Ltd.		Silver City Exploration, km 1635.8 RHS		PROJECT NO: 552-202101-1001-1-1				
Hitachi 200 LC		Coordinates: Z07V N6769333m E644316m		ELEVATION: 865m				
SAMPLE TYPE		<input type="checkbox"/> UNDISTURBED <input type="checkbox"/> DCPT <input checked="" type="checkbox"/> AUGER <input type="checkbox"/> BULK <input checked="" type="checkbox"/> SPT <input type="checkbox"/> CORE						
ELEV. (m)	★ Percent Fines ★ ◆ Percent Sand ◆ ■ Percent Gravel ■		Sample Type	Sample #	SOIL SYMBOL	DCPT/SPT Blows/30cm	SOIL DESCRIPTION	Depth (m)
	PLASTIC      M.C      LIQUID 0      20      40      60      80      100							
864				013	SW		ORGANICS	
							WELL-GRADED SAND with GRAVEL -Rusty colour	
863				012	GW-GM		WELL-GRADED GRAVEL with SILT and SAND -Dark brown, rounded	1
862				014	GP		POORLY GRADED GRAVEL with SAND	2
861							END of HOLE -Target depth reached	3



SUBSURFACE EXPLORATION AND TEST REPORT	Alaska Highway	SOURCE/TP#: 906-6564
Source Moters Ltd.	Silver City Exploration, km 1635.8 RHS	PROJECT NO: 552-202101-1001-1-1
Hitachi 200 LC	Coordinates: Z07V N6769333m E644316m	ELEVATION: 865m

## PHOTOS



Figure 906-6564.1  
Photo of waste pile and test pit 906-6564



Figure 906-6564.2  
Photo of waste pile from test pit 906-6564

SUBSURFACE EXPLORATION AND TEST REPORT		Alaska Highway		SOURCE/TP#: 906-6565									
Source Motors Ltd.		Silver City Exploration, km 1635.8 RHS		PROJECT NO: 552-202101-1001-1-1									
Hitachi 200 LC		Coordinates: Z07V N6769247m E644271m		ELEVATION: 862m									
SAMPLE TYPE		UNDISTURBED		DCPT		AUGER		BULK		SPT		CORE	
ELEV. (m)	PLASTIC		M.C		LIQUID		Sample Type	Sample #	SOIL SYMBOL	DCPT/SPT Blows/30cm	SOIL DESCRIPTION		Depth (m)
	0 20 40 60 80 100		0 20 40 60 80 100		0 20 40 60 80 100								
861								015	GP		POORLY GRADED GRAVEL with SAND -Dark brown, rounded		1
860								016	GP-GM		POORLY GRADED GRAVEL with SILT and SAND -Trace cobbles		2
859								017	GP-GM		SILTY GRAVEL with SAND -Moist		3
858								018	GM		END of HOLE -Target depth reached		



SUBSURFACE EXPLORATION AND TEST REPORT	Alaska Highway	SOURCE/TP#: 906-6565
Source Motors Ltd.	Silver City Exploration, km 1635.8 RHS	PROJECT NO: 552-202101-1001-1-1
Hitachi 200 LC	Coordinates: Z07V N6769247m E644271m	ELEVATION: 862m

## PHOTOS



Figure 906-6565.1  
Photo of waste pile from test pit 906-6565



Figure 906-6565.2  
Photo of sample pile from test pit 906-6565

SUBSURFACE EXPLORATION AND TEST REPORT		Alaska Highway		SOURCE/TP#: 906-6566	
Source Motors Ltd.		Silver City Exploration, km 1635.8 RHS		PROJECT NO: 552-202101-1001-1-1	
Hitachi 200 LC		Coordinates: Z07V N6769344m E644250m		ELEVATION: 863m	
SAMPLE TYPE		<input type="checkbox"/> UNDISTURBED <input checked="" type="checkbox"/> DCPT <input type="checkbox"/> AUGER <input checked="" type="checkbox"/> BULK <input checked="" type="checkbox"/> SPT <input type="checkbox"/> CORE			
ELEV. (m)		★ Percent Fines★ ◆ Percent Sand◆ ■ Percent Gravel■		Sample Type Sample # SOIL SYMBOL DCPT/SPT Blows/30cm	SOIL DESCRIPTION Depth (m)
862		019 GM POORLY GRADED GRAVEL with SILT and SAND -Rusty brown, damp		1	
861		020 GP-GM POORLY GRADED GRAVEL with SAND -Trace cobbles		2	
860		021 GP 		3	
859		END of HOLE -Target depth reached			



SUBSURFACE EXPLORATION AND TEST REPORT	Alaska Highway	SOURCE/TP#: 906-6566
Source Motors Ltd.	Silver City Exploration, km 1635.8 RHS	PROJECT NO: 552-202101-1001-1-1
Hitachi 200 LC	Coordinates: Z07V N6769344m E644250m	ELEVATION: 863m

## PHOTOS



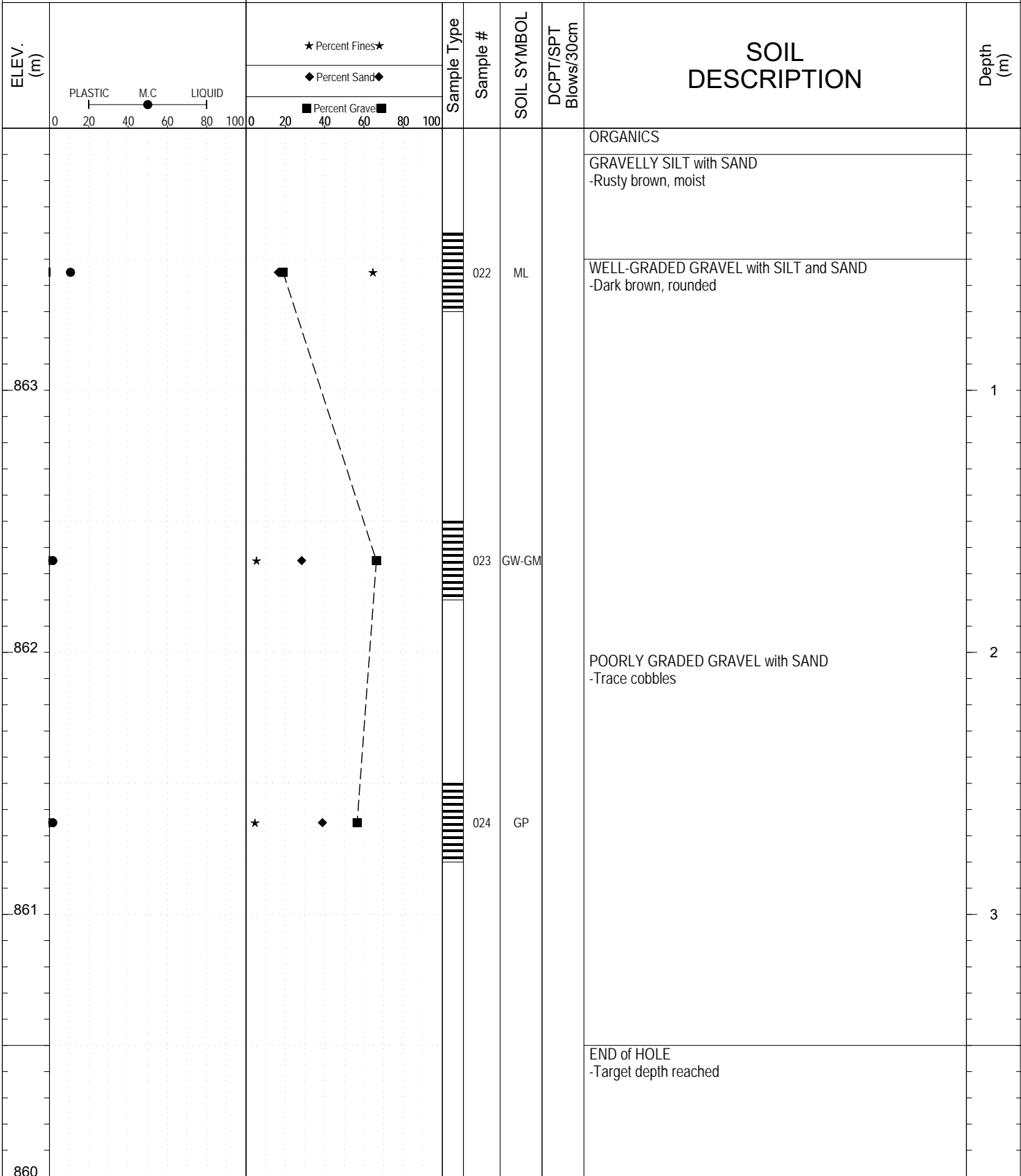
Figure 906-6566.1  
Photo of waste pile from test pit 906-6566



Figure 906-6566.2  
Photo of test pit 906-6566

SUBSURFACE EXPLORATION AND TEST REPORT		Alaska Highway	SOURCE/TP#: 906-6567
Source Motors Ltd.		Silver City Exploration, km 1635.8 RHS	PROJECT NO: 552-202101-1001-1-1
Hitachi 200 LC		Coordinates: Z07V N6769449m E644224m	ELEVATION: 864m

SAMPLE TYPE     UNDISTURBED     DCPT     AUGER     BULK     SPT     CORE



Highways and Public Works  
Transportation Engineering Branch

LOGGED BY: K.Elmer	Termination Depth: 3.5m
COMPILED BY: R.Stilwell	Complete: 10/17/2016 11:45:00 AM
REVIEWED BY:	Pit #: 115G-07    Page 1 of 2

SUBSURFACE EXPLORATION AND TEST REPORT	Alaska Highway	SOURCE/TP#: 906-6567
Source Moters Ltd.	Silver City Exploration, km 1635.8 RHS	PROJECT NO: 552-202101-1001-1-1
Hitachi 200 LC	Coordinates: Z07V N6769449m E644224m	ELEVATION: 864m

## PHOTOS



Figure 906-6567.1  
Photo of waste pile from test pit 906-6567



Figure 906-6567.2  
Photo of test pit 906-6567



SUBSURFACE EXPLORATION AND TEST REPORT		Alaska Highway		SOURCE/TP#: 906-6568				
Source Motors Ltd.		Silver City Exploration, km 1635.8 RHS		PROJECT NO: 552-202101-1001-1-1				
Hitachi 200 LC		Coordinates: Z07V N6769224m E644076m		ELEVATION: 858m				
SAMPLE TYPE		UNDISTURBED		DCPT				
		AUGER		BULK				
		SPT		CORE				
ELEV. (m)	★ Percent Fines★ ◆ Percent Sand◆ ■ Percent Gravel■		Sample Type	Sample #	SOIL SYMBOL	DCPT/SPT Blows/30cm	SOIL DESCRIPTION	Depth (m)
	PLASTIC      M.C      LIQUID 0      20      40      60      80      100							
857				025	GP		POORLY GRADED GRAVEL with SAND -Brown, rounded	1
856				026	GP-GM		POORLY GRADED GRAVEL with SILT and SAND	2
855				027	SP		POORLY GRADED SAND with GRAVEL -Damp, rounded	3
854							END of HOLE -Target depth reached	



SUBSURFACE EXPLORATION AND TEST REPORT	Alaska Highway	SOURCE/TP#: 906-6568
Source Moters Ltd.	Silver City Exploration, km 1635.8 RHS	PROJECT NO: 552-202101-1001-1-1
Hitachi 200 LC	Coordinates: Z07V N6769224m E644076m	ELEVATION: 858m

## PHOTOS



Figure 906-6568.1  
Photo of sample piles from test pit 906-6568



Figure 906-6568.2  
Photo of test pit 906-6568



SUBSURFACE EXPLORATION AND TEST REPORT		Alaska Highway		SOURCE/TP#: 906-6569					
Source Motors Ltd.		Silver City Exploration, km 1635.8 RHS		PROJECT NO: 552-202101-1001-1-1					
Hitachi 200 LC		Coordinates: Z07V N6769337m E644100m		ELEVATION: 859m					
SAMPLE TYPE		<input type="checkbox"/> UNDISTURBED <input type="checkbox"/> DCPT <input type="checkbox"/> AUGER <input type="checkbox"/> BULK <input checked="" type="checkbox"/> SPT <input type="checkbox"/> CORE							
ELEV. (m)	PLASTIC      M.C      LIQUID 0      20      40      60      80      100	★ Percent Fines ★ ◆ Percent Sand ◆ ■ Percent Gravel ■		Sample Type	Sample #	SOIL SYMBOL	DCPT/SPT Blows/30cm	SOIL DESCRIPTION	Depth (m)
		0      20      40      60      80      100							
858					028	ML		ORGANICS SANDY SILT -Tan	1
857					029	SW		WELL-GRADED SAND with GRAVEL -Brown, rounded -Trace cobbles	2
856					030	SM		Gravelly Silt Till -Matrix supported -Silty sand with gravel matrix -Hard	3
855								END of HOLE Target depth reached	



SUBSURFACE EXPLORATION AND TEST REPORT	Alaska Highway	SOURCE/TP#: 906-6569
Source Moters Ltd.	Silver City Exploration, km 1635.8 RHS	PROJECT NO: 552-202101-1001-1-1
Hitachi 200 LC	Coordinates: Z07V N6769337m E644100m	ELEVATION: 859m

## PHOTOS



Figure 906-6569.1  
Photo of sample and waste piles from test pit 906-6569



Figure 906-6569.2  
Photo of test pit 906-6569

SUBSURFACE EXPLORATION AND TEST REPORT		Alaska Highway		SOURCE/TP#: 906-6570				
Source Motors Ltd.		Silver City Exploration, km 1635.8 RHS		PROJECT NO: 552-202101-1001-1-1				
Hitachi 200 LC		Coordinates: Z07V N6769443m E644024m		ELEVATION: 860m				
SAMPLE TYPE	<input type="checkbox"/> UNDISTURBED	<input type="checkbox"/> DCPT	<input checked="" type="checkbox"/> AUGER	<input type="checkbox"/> BULK	<input checked="" type="checkbox"/> SPT	<input type="checkbox"/> CORE		
ELEV. (m)	★ Percent Fines ★ ◆ Percent Sand ◆ ■ Percent Gravel ■		Sample Type	Sample #	SOIL SYMBOL	DCPT/SPT Blows/30cm	SOIL DESCRIPTION	Depth (m)
	PLASTIC      M.C      LIQUID 0      20      40      60      80      100							
859				031	ML		ORGANICS  SANDY SILT -Tan, damp	1
858				032	SP		POORLY GRADED SAND with GRAVEL -Brown, rounded	2
857				033	GM		SILTY GRAVEL with SAND -Brown, rounded	3
856							END of HOLE -Target depth reached	



SUBSURFACE EXPLORATION AND TEST REPORT	Alaska Highway	SOURCE/TP#: 906-6570
Source Motors Ltd.	Silver City Exploration, km 1635.8 RHS	PROJECT NO: 552-202101-1001-1-1
Hitachi 200 LC	Coordinates: Z07V N6769443m E644024m	ELEVATION: 860m

## PHOTOS



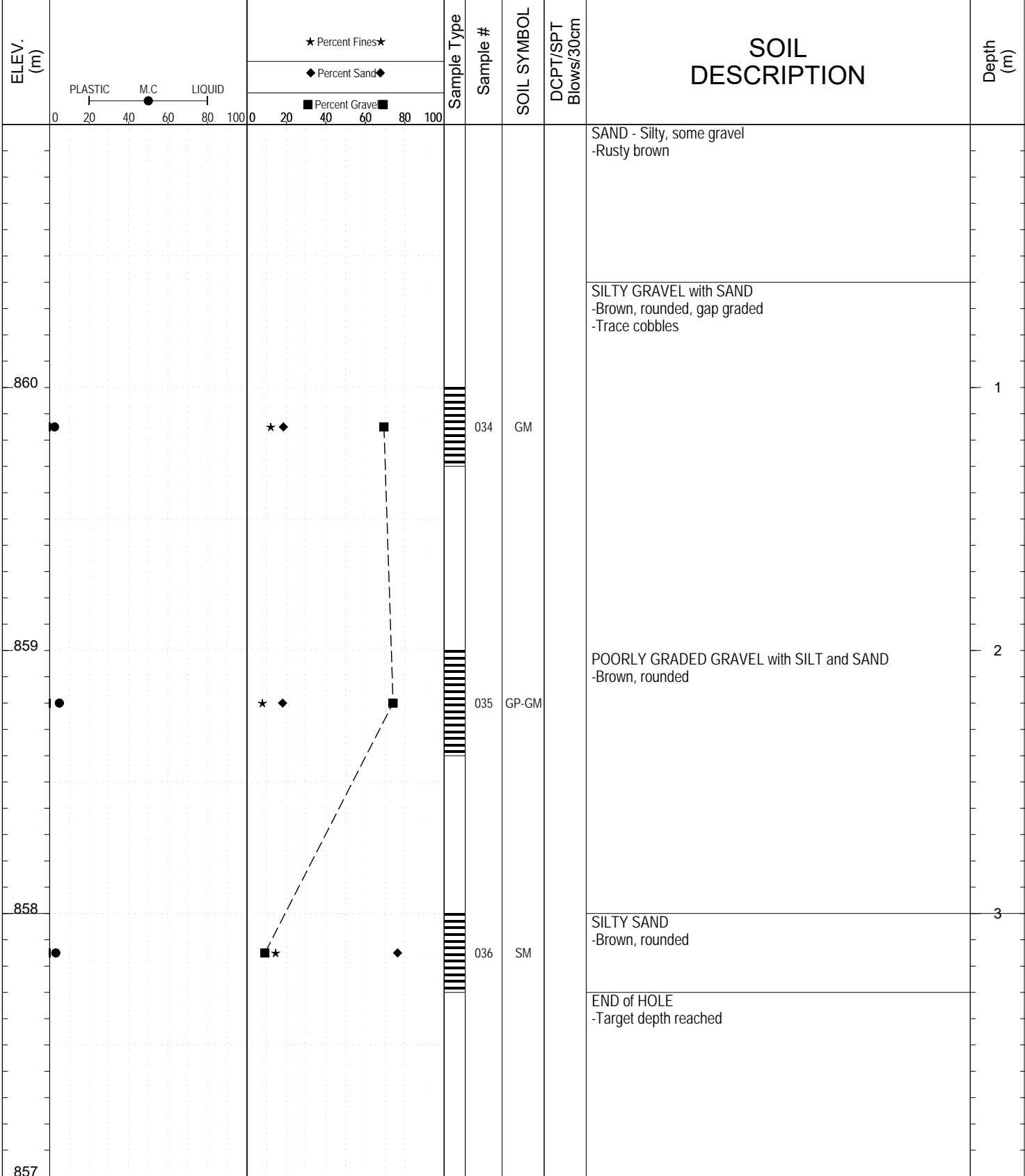
Figure 906-6570.1  
Photo of waste pile and test pit 906-6570



Figure 906-6570.2  
Photo of test pit 906-6570



SAMPLE TYPE     UNDISTURBED     DCPT     AUGER     BULK     SPT     CORE



SUBSURFACE EXPLORATION AND TEST REPORT	Alaska Highway	SOURCE/TP#: 906-6571
Source Motors Ltd.	Silver City Exploration, km 1635.8 RHS	PROJECT NO: 552-202101-1001-1-1
Hitachi 200 LC	Coordinates: Z07V N6769451m E644073m	ELEVATION: 861m

## PHOTOS



Figure 906-6571.1  
Photo of waste pile from test pit 906-6571



Figure 906-6571.2  
Photo of test pit 906-6571

SUBSURFACE EXPLORATION AND TEST REPORT		Alaska Highway		SOURCE/TP#: 906-6572				
Source Motors Ltd.		Silver City Exploration, km 1635.8 RHS		PROJECT NO: 552-202101-1001-1-1				
Hitachi 200 LC		Coordinates: Z07V N6769333m E643997m		ELEVATION: 857m				
SAMPLE TYPE	<input type="checkbox"/> UNDISTURBED	<input type="checkbox"/> DCPT	<input checked="" type="checkbox"/> AUGER	<input type="checkbox"/> BULK	<input checked="" type="checkbox"/> SPT	<input type="checkbox"/> CORE		
ELEV. (m)	★ Percent Fines★ ◆ Percent Sand◆ ■ Percent Gravel■		Sample Type	Sample #	SOIL SYMBOL	DCPT/SPT Blows/30cm	SOIL DESCRIPTION	Depth (m)
	PLASTIC      M.C      LIQUID 0      20      40      60      80      100							
856				037	GM		SILT	1
							SAND-gravelly -Tan, rounded	
							SILTY GRAVEL with SAND -Brown, sub-rounded	
855				038	GP-GM		POORLY GRADED GRAVEL with SILT and SAND	2
854				039	SP		POORLY GRADED SAND with GRAVEL -brown, sub-rounded	3
							END of HOLE -Target depth reached	
853								



SUBSURFACE EXPLORATION AND TEST REPORT	Alaska Highway	SOURCE/TP#: 906-6572
Source Motors Ltd.	Silver City Exploration, km 1635.8 RHS	PROJECT NO: 552-202101-1001-1-1
Hitachi 200 LC	Coordinates: Z07V N6769333m E643997m	ELEVATION: 857m

## PHOTOS



Figure 906-6572.1  
Photo of test pit 906-6572



Figure 906-6572.2  
Photo of sample piles from test pit 906-6572

SUBSURFACE EXPLORATION AND TEST REPORT		Alaska Highway		SOURCE/TP#: 906-6573				
Source Motors Ltd.		Silver City Exploration, km 1635.8 RHS		PROJECT NO: 552-202101-1001-1-1				
Hitachi 200 LC		Coordinates: Z07V N6769476m E643952m		ELEVATION: 860m				
SAMPLE TYPE		UNDISTURBED		DCPT				
		AUGER		BULK				
		SPT		CORE				
ELEV. (m)	★ Percent Fines★ ◆ Percent Sand◆ ■ Percent Gravel■		Sample Type	Sample #	SOIL SYMBOL	DCPT/SPT Blows/30cm	SOIL DESCRIPTION	Depth (m)
	PLASTIC      M.C      LIQUID 0      20      40      60      80      100							
859				040	SP		POORLY GRADED SAND with GRAVEL	1
858				041	GP		POORLY GRADED GRAVEL with SAND -Rounded	2
857				042	GP		-Damp	3
856							END of HOLE -Target depth reached	



SUBSURFACE EXPLORATION AND TEST REPORT	Alaska Highway	SOURCE/TP#: 906-6573
Source Moters Ltd.	Silver City Exploration, km 1635.8 RHS	PROJECT NO: 552-202101-1001-1-1
Hitachi 200 LC	Coordinates: Z07V N6769476m E643952m	ELEVATION: 860m

## PHOTOS



Figure 906-6573.1  
Photo of test pit 906-6573



Figure 906-6573.2  
Photo of sample piles from test pit 906-6573

SUBSURFACE EXPLORATION AND TEST REPORT		Alaska Highway		SOURCE/TP#: 906-6574			
Source Motors Ltd.		Silver City Exploration, km 1635.8 RHS		PROJECT NO: 552-202101-1001-1-1			
Hitachi 200 LC		Coordinates: Z07V N6769138m E643914m		ELEVATION: 853m			
SAMPLE TYPE		<input type="checkbox"/> UNDISTURBED		<input type="checkbox"/> DCPT			
		<input type="checkbox"/> AUGER		<input type="checkbox"/> BULK			
		<input checked="" type="checkbox"/> SPT		<input type="checkbox"/> CORE			
ELEV. (m)		★ Percent Fines★		Sample #	SOIL SYMBOL	SOIL DESCRIPTION	Depth (m)
		◆ Percent Sand◆					
		■ Percent Gravel■					
852						ORGANICS	1
851						GRAVEL - sandy, trace silt -Dark brown, rounded -Trace cobbles -GWT Encountered END of HOLE -Target depth reached	2
850							3
849							
		Highways and Public Works Transportation Engineering Branch		LOGGED BY: K.Elmer		Termination Depth: 0.4m	
				COMPILED BY: R.Stilwell		Complete: 10/18/2016 9:45:00 AM	
				REVIEWED BY:		Pit #: 115G-07 Page 1 of 2	

SUBSURFACE EXPLORATION AND TEST REPORT	Alaska Highway	SOURCE/TP#: 906-6574
Source Moters Ltd.	Silver City Exploration, km 1635.8 RHS	PROJECT NO: 552-202101-1001-1-1
Hitachi 200 LC	Coordinates: Z07V N6769138m E643914m	ELEVATION: 853m

## PHOTOS



Figure 906-6574.1  
Photo of test pit 906-6574



Figure 906-6574.2  
Photo of test pit 906-6574 no 2.

SUBSURFACE EXPLORATION AND TEST REPORT		Alaska Highway		SOURCE/TP#: 906-6575				
Source Motors Ltd.		Silver City Exploration, km 1635.8 RHS		PROJECT NO: 552-202101-1001-1-1				
Hitachi 200 LC		Coordinates: Z07V N6769234m E643916m		ELEVATION: 855m				
SAMPLE TYPE		UNDISTURBED		DCPT				
		AUGER		BULK				
		SPT		CORE				
ELEV. (m)	★ Percent Fines★ ◆ Percent Sand◆ ■ Percent Gravel■		Sample Type	Sample #	SOIL SYMBOL	DCPT/SPT Blows/30cm	SOIL DESCRIPTION	Depth (m)
	PLASTIC      M.C      LIQUID 0    20    40    60    80    100							
854	●	■ ◆ ★	043	ML			ORGANICS  SILT with SAND -Sand at the top, gradually transitions to silt -Brown	1
853								2
852							END of HOLE -Target depth reached	3
851								



SUBSURFACE EXPLORATION AND TEST REPORT	Alaska Highway	SOURCE/TP#: 906-6575
Source Moters Ltd.	Silver City Exploration, km 1635.8 RHS	PROJECT NO: 552-202101-1001-1-1
Hitachi 200 LC	Coordinates: Z07V N6769234m E643916m	ELEVATION: 855m

## PHOTOS



Figure 906-6575.1  
Photo of waste pile from test pit 906-6575



Figure 906-6575.2  
Photo of test pit 906-6575

SUBSURFACE EXPLORATION AND TEST REPORT		Alaska Highway		SOURCE/TP#: 906-6576									
Source Motors Ltd.		Silver City Exploration, km 1635.8 RHS		PROJECT NO: 552-202101-1001-1-1									
Hitachi 200 LC		Coordinates: Z07V N6769366m E643891m		ELEVATION: 857m									
SAMPLE TYPE		UNDISTURBED		DCPT		AUGER		BULK		SPT		CORE	
ELEV. (m)	PLASTIC		M.C		LIQUID		Sample Type	Sample #	SOIL SYMBOL	DCPT/SPT Blows/30cm	SOIL DESCRIPTION		Depth (m)
	0 20 40 60 80 100		0 20 40 60 80 100		0 20 40 60 80 100								
856							044	SP-SM			ORGANICS		
											SILT		
											POORLY GRADED SAND with SILT -Brown, rounded		
											SILT lense, 100mm		
											POORLY GRADED GRAVEL with SAND -Brown, rounded -Trace cobbles		1
855							045	GP					2
854													3
											POORLY GRADED SAND with GRAVEL		
853							046	SP			END of HOLE -Target depth reached		



SUBSURFACE EXPLORATION AND TEST REPORT	Alaska Highway	SOURCE/TP#: 906-6576
Source Moters Ltd.	Silver City Exploration, km 1635.8 RHS	PROJECT NO: 552-202101-1001-1-1
Hitachi 200 LC	Coordinates: Z07V N6769366m E643891m	ELEVATION: 857m

## PHOTOS




Figure 906-6576.1  
Photo of test pit 906-6576



Figure 906-6576.2  
Photo of test pit 906-6576 no.2



SUBSURFACE EXPLORATION AND TEST REPORT		Alaska Highway		SOURCE/TP#: 906-6577						
Source Motors Ltd.		Silver City Exploration, km 1635.8 RHS		PROJECT NO: 552-202101-1001-1-1						
Hitachi 200 LC		Coordinates: Z07V N6769337m E643806m		ELEVATION: 855m						
SAMPLE TYPE		<input type="checkbox"/> UNDISTURBED	<input type="checkbox"/> DCPT	<input type="checkbox"/> AUGER	<input type="checkbox"/> BULK	<input checked="" type="checkbox"/> SPT	<input type="checkbox"/> CORE			
ELEV. (m)	PLASTIC      M.C      LIQUID 0      20      40      60      80      100		★ Percent Fines ★ ◆ Percent Sand ◆ ■ Percent Gravel ■		Sample Type	Sample #	SOIL SYMBOL	DCPT/SPT Blows/30cm	SOIL DESCRIPTION	Depth (m)
	0      20      40      60      80      100		0      20      40      60      80      100							
854			★      ■      ◆		047	SP		ORGANICS SILT POORLY GRADED SAND with GRAVEL -Light brown, rounded  Ash lense - 100mm	1	
853			★      ■      ◆		048	SP			2	
852								END of HOLE -Target depth reached	3	
851										
 Highways and Public Works Transportation Engineering Branch		LOGGED BY: K.Elmer				Termination Depth: 3m				
		COMPILED BY: R.Stilwell				Complete: 10/18/2016 2:00:00 PM				
		REVIEWED BY:				Pit #: 115G-07      Page 1 of 2				

SUBSURFACE EXPLORATION AND TEST REPORT	Alaska Highway	SOURCE/TP#: 906-6577
Source Motors Ltd.	Silver City Exploration, km 1635.8 RHS	PROJECT NO: 552-202101-1001-1-1
Hitachi 200 LC	Coordinates: Z07V N6769337m E643806m	ELEVATION: 855m

## PHOTOS



Figure 906-6577.1  
Photo of sample tag from test pit 906-6577



Figure 906-6577.2  
Photo of test pit 906-6577

SUBSURFACE EXPLORATION AND TEST REPORT		Alaska Highway		SOURCE/TP#: 906-6578				
Source Motors Ltd.		Silver City Exploration, km 1635.8 RHS		PROJECT NO: 552-202101-1001-1-1				
Hitachi 200 LC		Coordinates: Z07V N6769417m E643819m		ELEVATION: 856m				
SAMPLE TYPE		UNDISTURBED		DCPT				
		AUGER		BULK				
		SPT		CORE				
ELEV. (m)	★ Percent Fines★ ◆ Percent Sand◆ ■ Percent Gravel■		Sample Type	Sample #	SOIL SYMBOL	DCPT/SPT Blows/30cm	SOIL DESCRIPTION	Depth (m)
	PLASTIC      M.C      LIQUID 0      20      40      60      80      100							
855	●	★	■	◆	049	SP	ORGANICS SILT with gravel POORLY GRADED SAND with GRAVEL -Brown, rounded	1
854	●	★	■	◆	050	SP		2
853	●	★	■		051	GP	POORLY GRADED GRAVEL with SAND	3
852							END of HOLE -Target depth reached	



SUBSURFACE EXPLORATION AND TEST REPORT	Alaska Highway	SOURCE/TP#: 906-6578
Source Moters Ltd.	Silver City Exploration, km 1635.8 RHS	PROJECT NO: 552-202101-1001-1-1
Hitachi 200 LC	Coordinates: Z07V N6769417m E643819m	ELEVATION: 856m

## PHOTOS



Figure 906-6578.1  
Photo of waste pile from test pit 906-6578



Figure 906-6578.2  
Photo of test pit 906-6578

GRAIN SIZE ANALYSIS	Silver City Exploration	SOURCE/TP#: 906-6560
Source Motors Ltd.	km 1635.8 RHS	PROJECT NO: 552-202101-1001-1-1
Hitachi 200 LC	Coordinates: Z07V N6769236m E644412m	ELEVATION: 867m

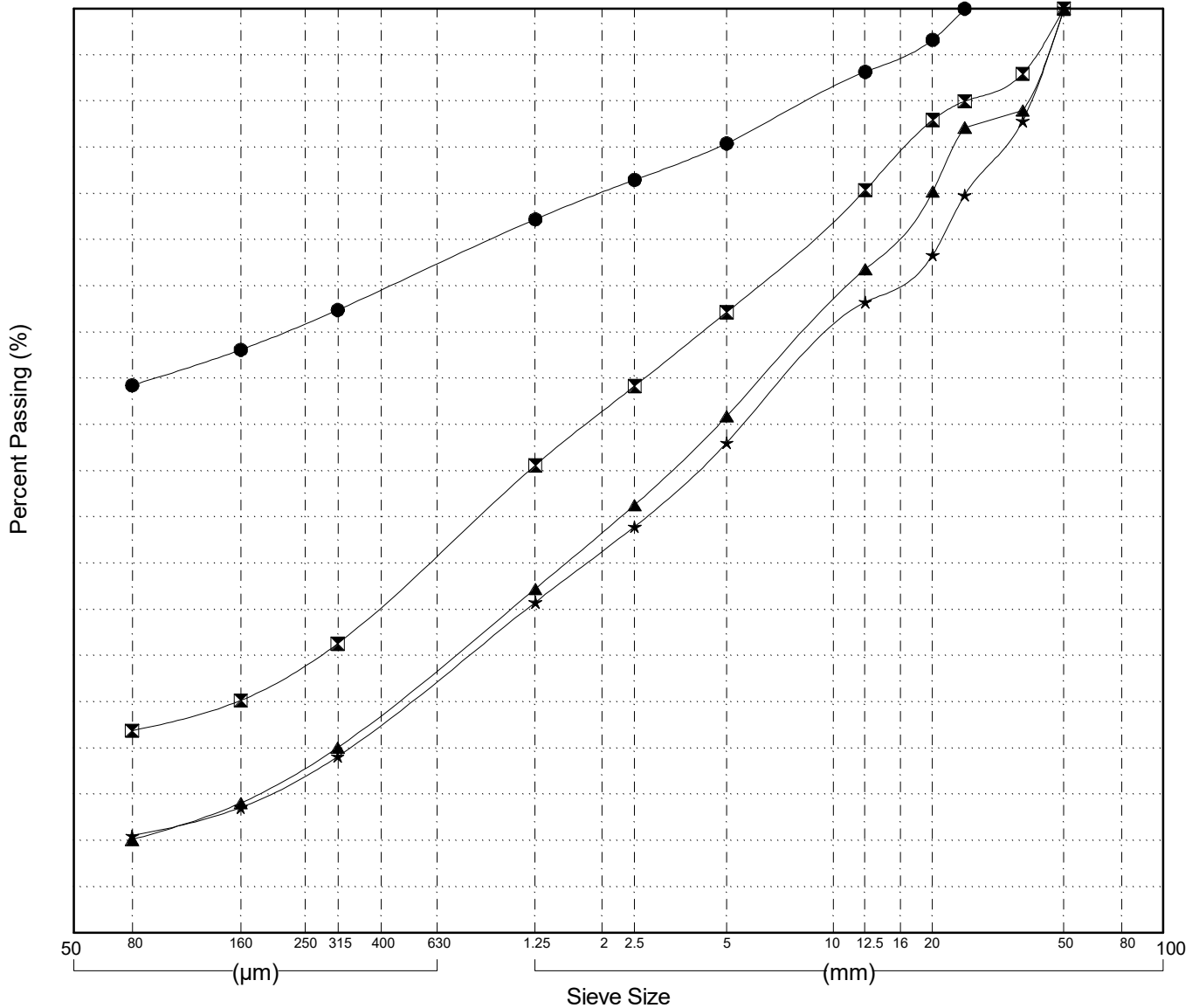
Master Revised July 2013

Field#	Lab#	Depth	Classification	%H <sub>2</sub> O	LL	PL	PI	C <sub>c</sub>	C <sub>u</sub>
● 001	513	0.3 to 0.4	SANDY SILT (ML)	8.7	NP	NP	NP		
☒ 002	514	1.0 to 1.2	SILTY SAND with GRAVEL (SM)	3.3	NP	NP	NP		
▲ 003	515	2.0 to 2.2	WELL-GRADED SAND with SILT and GRAVEL (SW-SM)	2.7	NP	NP	NP	1.1	82.9
★ 004	516	3.0 to 3.2	WELL-GRADED GRAVEL with SILT and SAND (GW-GM)	3.2	NP	NP	NP	1.2	112.5

Field#	Lab#	% PASSING	Sieve Size (mm)																% Breakdown			
			100.0	80.0	50.0	25.0	20.0	12.5	10.0	5.0	2.5	1.25	0.630	0.315	0.160	0.080	Gravel	Sand	Silt	Clay		
● 001	513	100.0	100.0	100.0	100.0	100.0	96.6	93.2	91.4	85.4	81.5	77.2	72.3	67.4	63.1	59.3	14.6	26.2	59.3			
☒ 002	514	100.0	100.0	100.0	90.0	87.9	80.4	77.3	67.2	59.2	50.6	41.0	31.3	25.2	21.9	32.8	45.3	21.9				
▲ 003	515	100.0	100.0	100.0	87.1	80.2	71.8	68.1	55.9	46.3	37.2	28.7	20.1	14.1	10.1	44.1	45.8	10.1				
★ 004	516	100.0	100.0	100.0	79.8	73.3	68.3	64.7	53.0	44.0	35.8	27.5	19.1	13.6	10.5	47.0	42.5	10.5				

Silt	Sand			Gravel	
	Fine	Medium	Coarse	Fine	Coarse



Highways and Public Works  
Transportation Engineering Branch

LOGGED BY: K.Elmer  
COMPILED BY: R.Stilwell  
REVIEWED BY:

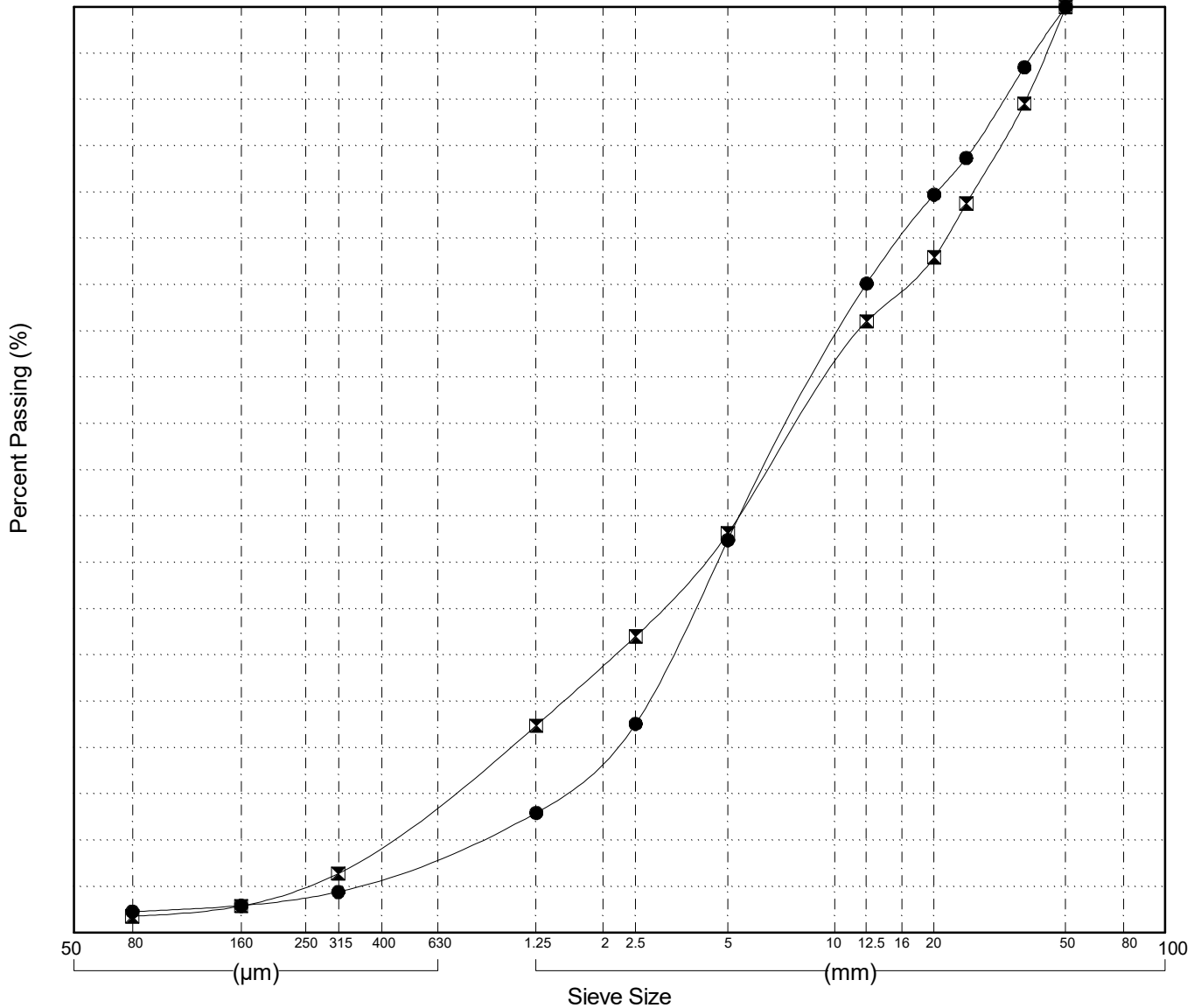
Pit # 115G-07  
Complete: 10/16/2016 3:00:00 PM

GRAIN SIZE ANALYSIS	Silver City Exploration	SOURCE/TP#: 906-6561
Source Motors Ltd.	km 1635.8 RHS	PROJECT NO: 552-202101-1001-1-1
Hitachi 200 LC	Coordinates: Z07V N6769345m E644416m	ELEVATION: 868m

Master Revised July 2013

Field#	Lab#	Depth	Classification	%H2O	LL	PL	PI	Cc	Cu											
● 005	517	0.9 to 1.2	WELL-GRADED GRAVEL with SAND(GW)	2.0	NP	NP	NP	1.5	11.3											
☒ 006	518	2.0 to 2.3	WELL-GRADED GRAVEL with SAND(GW)	4.5	NP	NP	NP	1.1	22.6											
Field#	Lab#	100.0	80.0	50.0	25.0	20.0	12.5	10.0	5.0	2.5	1.25	0.630	0.315	0.160	0.080	%Breakdown				
● 005	517	100.0	100.0	100.0	83.7	79.7	70.1	63.7	42.4	22.6	13.0	8.7	4.4	2.9	2.3	Gravel	Sand	Silt	Clay	
☒ 006	518	100.0	100.0	100.0	78.8	73.0	66.0	60.8	43.1	32.0	22.4	14.4	6.4	2.9	1.8	57.6	40.1	2.3		

Silt	Sand			Gravel	
	Fine	Medium	Coarse	Fine	Coarse



GRAIN SIZE ANALYSIS	Silver City Exploration	SOURCE/TP#: 906-6562
Source Motors Ltd.	km 1635.8 RHS	PROJECT NO: 552-202101-1001-1-1
Hitachi 200 LC	Coordinates: Z07V N6769393m E644407m	ELEVATION: 869m

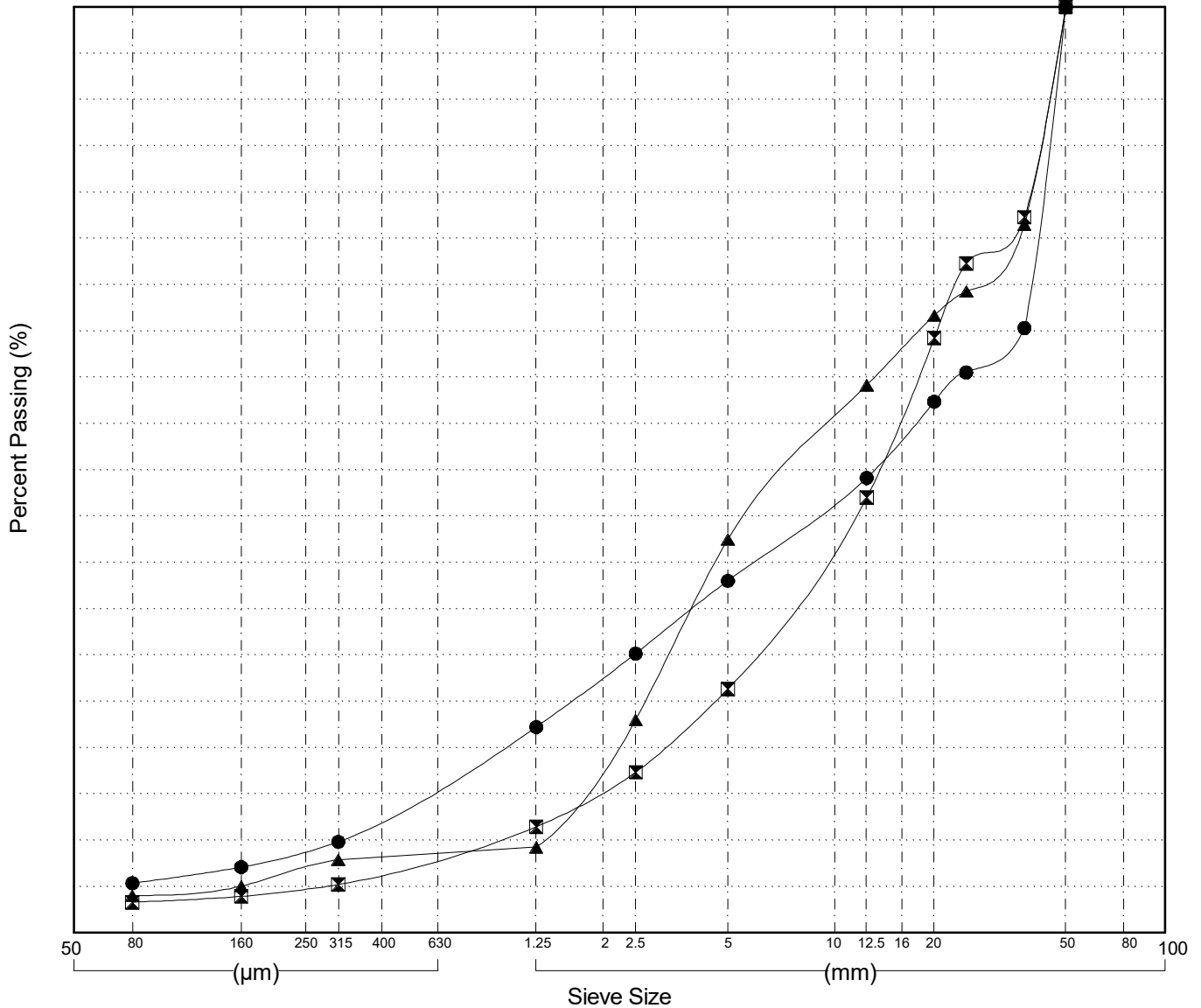
Master Revised July 2013

Field#	Lab#	Depth	Classification	%H2O	LL	PL	PI	Cc	Cu
● 007	519	0.5 to 0.7	POORLY GRADED GRAVEL with SILT and SAND(GP-GM)	0.9	NP	NP	NP	0.8	75.1
☒ 008	520	2.0 to 2.3	WELL-GRADED GRAVEL with SAND(GW)	2.2	NP	NP	NP	2.0	19.7
▲ 009	521	3.0 to 3.3	POORLY GRADED GRAVEL with SAND(GP)	1.2	NP	NP	NP	0.6	10.2

Field#	Lab#	100.0	80.0	50.0	25.0	20.0	12.5	10.0	5.0	2.5	1.25	0.630	0.315	0.160	0.080	% Breakdown			
		% PASSING														Gravel	Sand	Silt	Clay
● 007	519	100.0	100.0	100.0	60.5	57.4	49.1	46.6	38.0	30.2	22.2	16.1	9.8	7.1	5.4	62.0	32.6	5.4	
☒ 008	520	100.0	100.0	100.0	72.3	64.2	47.0	42.2	26.3	17.3	11.5	8.4	5.2	3.9	3.3	73.7	23.0	3.3	
▲ 009	521	100.0	100.0	100.0	69.3	66.7	59.1	55.3	42.5	23.0	9.3	8.6	7.9	5.0	4.0	57.5	38.5	4.0	

Silt	Sand			Gravel	
	Fine	Medium	Coarse	Fine	Coarse

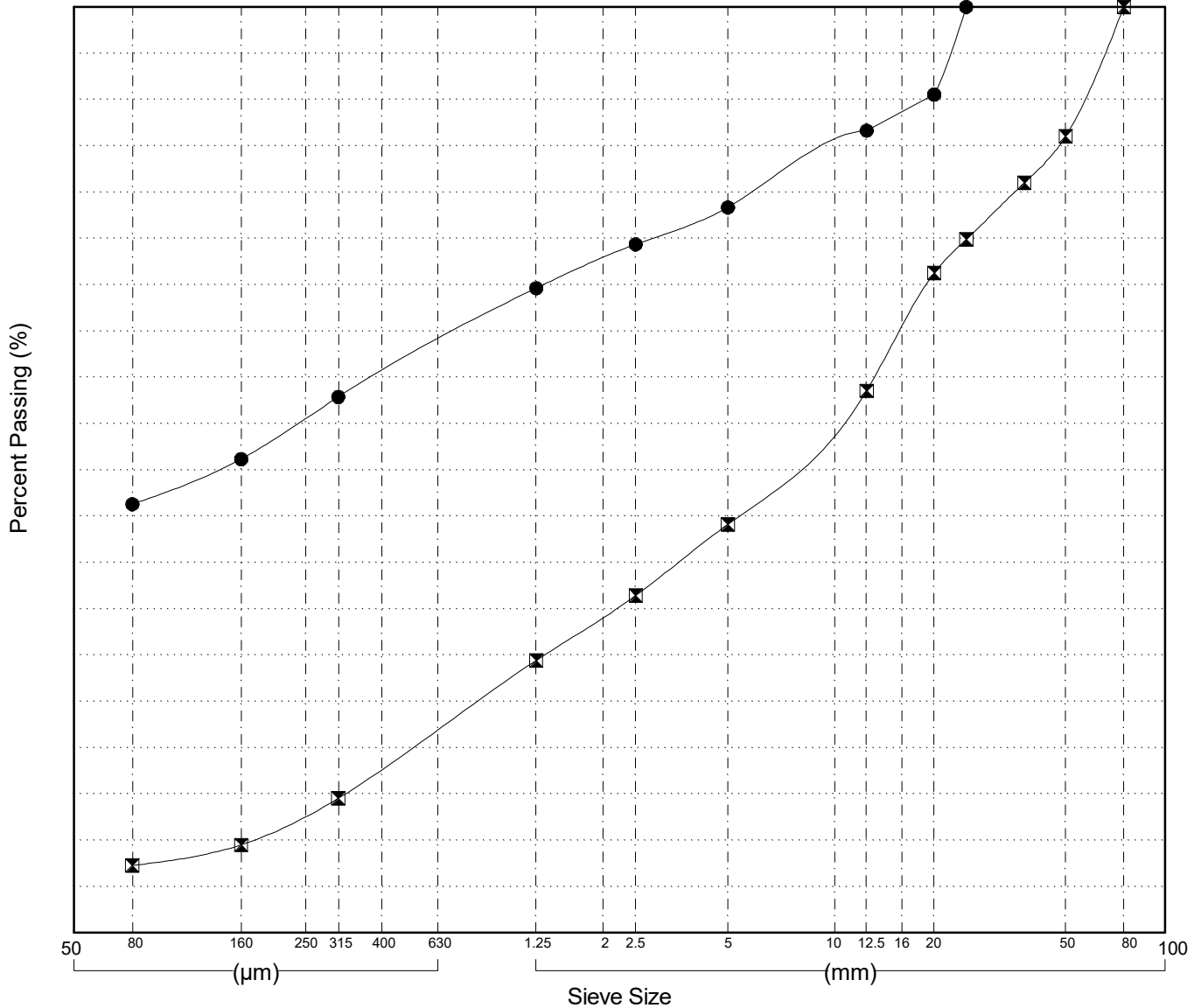


GRAIN SIZE ANALYSIS	Silver City Exploration	SOURCE/TP#: 906-6563
Source Motors Ltd.	km 1635.8 RHS	PROJECT NO: 552-202101-1001-1-1
Hitachi 200 LC	Coordinates: Z07V N6769453m E644325m	ELEVATION: 867m

Master Revised July 2013

Field#	Lab#	Depth	Classification	%H2O	LL	PL	PI	Cc	Cu										
● 010	522	0.5 to 0.8	SILTY SAND with GRAVEL(SM)	7.3	NP	NP	NP												
☒ 011	523	1.5 to 1.8	POORLY GRADED GRAVEL with SILT and SAND(GP-GM)	3.1	NP	NP	NP	0.8	77.1										
Field#	Lab#	100.0	80.0	50.0	25.0	20.0	12.5	10.0	5.0	2.5	1.25	0.630	0.315	0.160	0.080	%Breakdown			
● 010	522	100.0	100.0	100.0	100.0	90.5	86.6	84.7	78.3	74.4	69.6	63.8	57.9	51.2	46.3	Gravel	Sand	Silt	Clay
☒ 011	523	100.0	100.0	86.0	74.9	71.3	58.5	55.2	44.1	36.4	29.4	22.0	14.5	9.5	7.3	55.9	36.8	7.3	

Silt	Sand			Gravel	
	Fine	Medium	Coarse	Fine	Coarse



GRAIN SIZE ANALYSIS	Silver City Exploration	SOURCE/TP#: 906-6564
Source Motors Ltd.	km 1635.8 RHS	PROJECT NO: 552-202101-1001-1-1
Hitachi 200 LC	Coordinates: Z07V N6769333m E644316m	ELEVATION: 865m

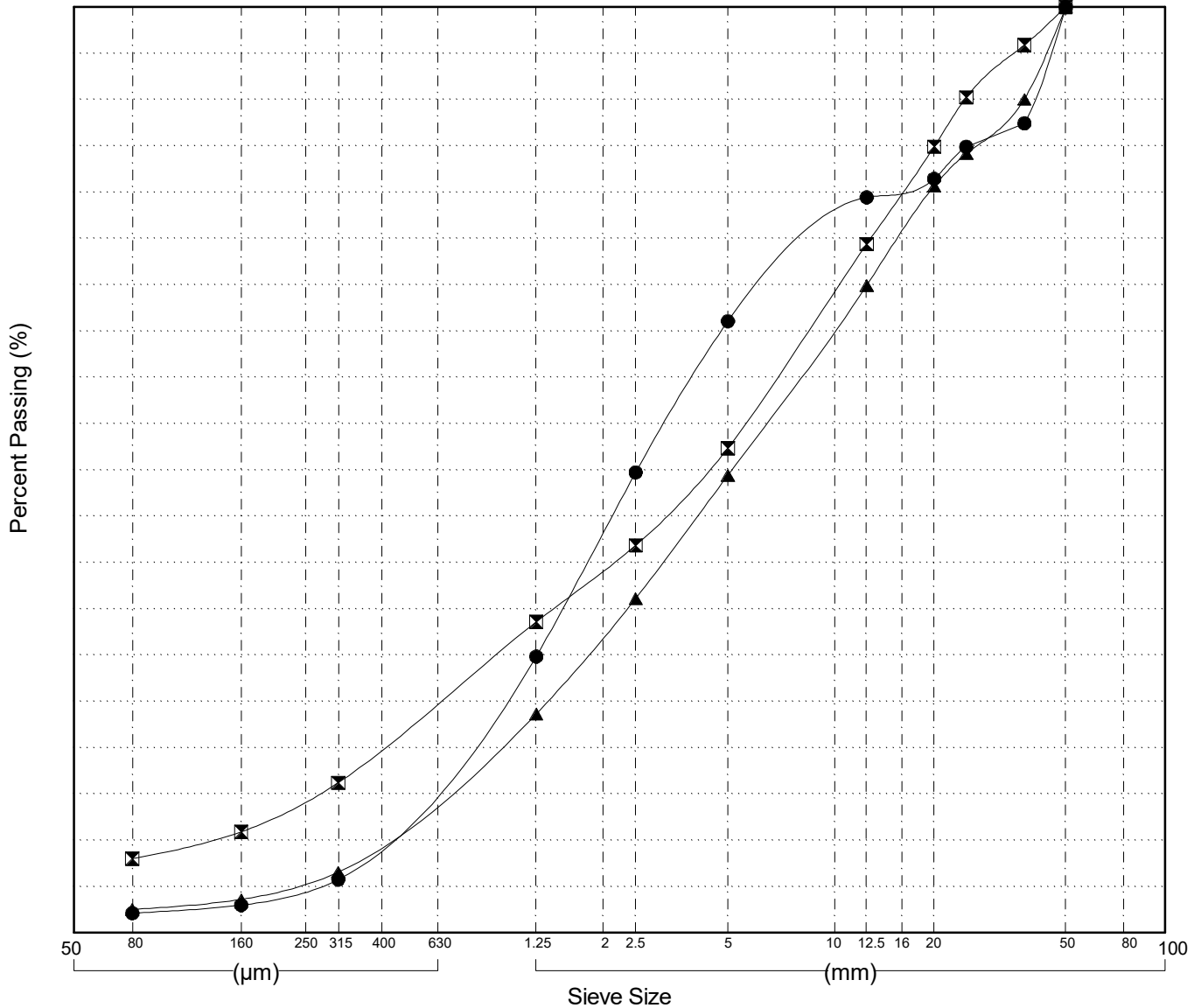
Master Revised July 2013

Field#	Lab#	Depth	Classification	%H2O	LL	PL	PI	Cc	Cu
● 013	525	0.5 to 0.8	WELL-GRADED SAND with GRAVEL(SW)	1.0	NP	NP	NP	1.1	9.3
☒ 012	524	1.2 to 1.5	WELL-GRADED GRAVEL with SILT and SAND(GW-GM)	1.6	NP	NP	NP	1.1	52.6
▲ 014	526	2.5 to 2.8	POORLY GRADED GRAVEL with SAND(GP)	0.9	NP	NP	NP	1.0	18.8

Field#	Lab#	% PASSING	100.0	80.0	50.0	25.0	20.0	12.5	10.0	5.0	2.5	1.25	0.630	0.315	0.160	0.080	% Breakdown			
			Gravel	Sand	Silt	Clay														
● 013	525	100.0	100.0	100.0	84.9	81.4	79.4	76.3	66.0	49.7	29.8	17.9	5.8	3.0	2.1	34.0	63.9	2.1		
☒ 012	524	100.0	100.0	100.0	90.2	84.9	74.4	69.3	52.3	41.8	33.6	24.9	16.2	10.9	8.0	47.7	44.3	8.0		
▲ 014	526	100.0	100.0	100.0	84.1	80.6	69.9	65.2	49.4	36.1	23.6	15.1	6.6	3.6	2.5	50.6	46.9	2.5		

Silt	Sand			Gravel	
	Fine	Medium	Coarse	Fine	Coarse



GRAIN SIZE ANALYSIS	Silver City Exploration	SOURCE/TP#: 906-6565
Source Motors Ltd.	km 1635.8 RHS	PROJECT NO: 552-202101-1001-1-1
Hitachi 200 LC	Coordinates: Z07V N6769247m E644271m	ELEVATION: 862m

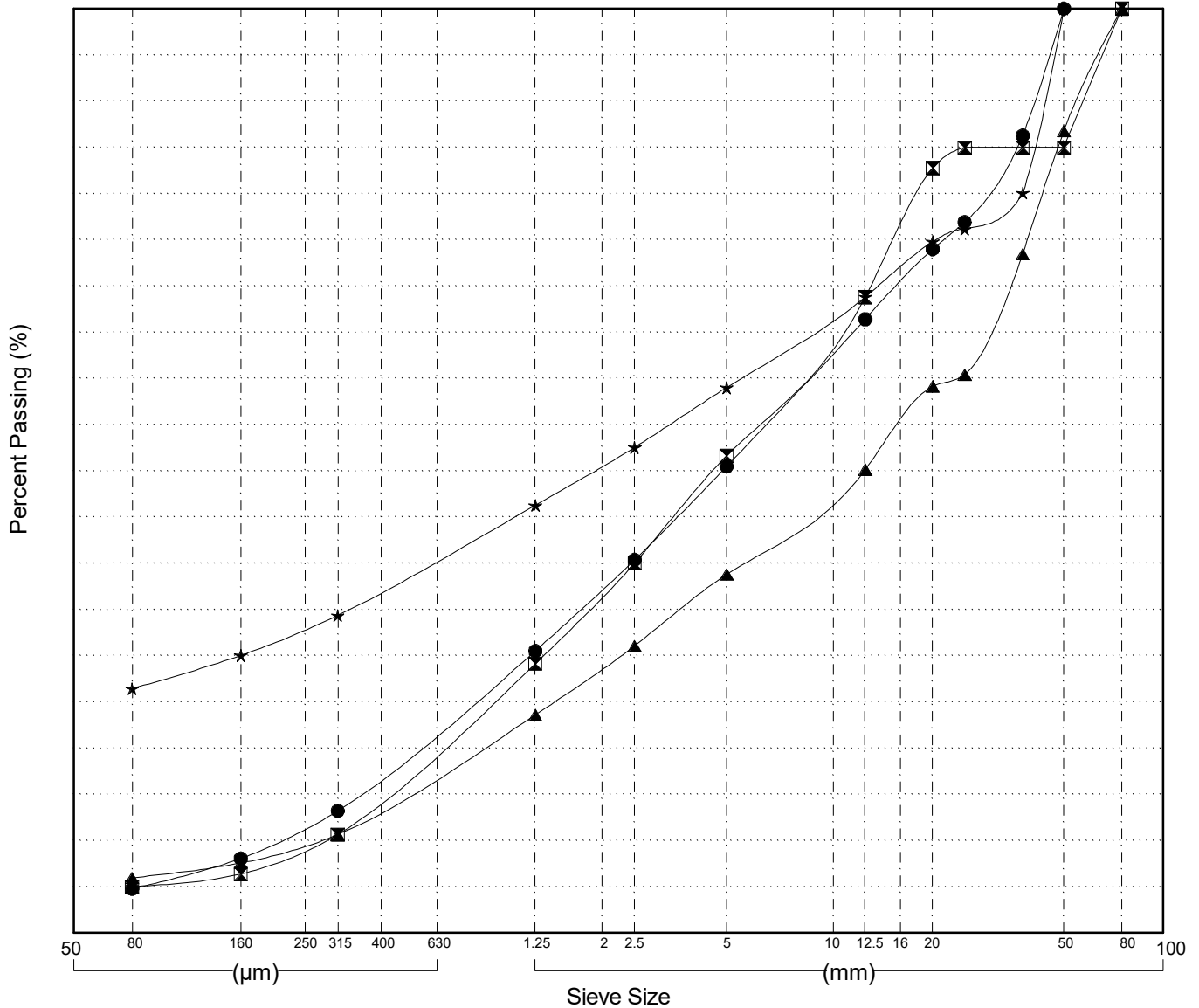
Master Revised July 2013

Field#	Lab#	Depth	Classification	%H2O	LL	PL	PI	Cc	Cu
● 015	527	0.5 to 0.8	POORLY GRADED GRAVEL with SAND(GP)	1.7	NP	NP	NP	0.8	41.0
☒ 016	528	1.5 to 1.8	POORLY GRADED GRAVEL with SILT and SAND(GP-GM)	1.9	NP	NP	NP	0.8	26.8
▲ 017	529	2.4 to 2.7	POORLY GRADED GRAVEL with SILT and SAND(GP-GM)	2.1	NP	NP	NP	0.8	85.3
★ 018	530	3.0 to 3.4	SILTY GRAVEL with SAND(GM)	4.2	NP	NP	NP		

Field#	Lab#	% PASSING	Sieve Size (mm)													% Breakdown			
			100.0	80.0	50.0	25.0	20.0	12.5	10.0	5.0	2.5	1.25	0.630	0.315	0.160	0.080	Gravel	Sand	Silt/Clay
● 015	527	100.0	100.0	100.0	100.0	76.9	74.0	66.4	62.7	50.5	40.4	30.5	21.9	13.2	8.1	4.8	49.5	45.7	4.8
☒ 016	528	100.0	100.0	85.0	85.0	82.8	68.8	64.8	51.6	40.0	29.1	20.0	10.7	6.4	5.0	48.4	46.6	5.0	
▲ 017	529	100.0	100.0	86.8	60.4	59.1	50.1	47.5	38.8	31.1	23.6	17.2	10.6	7.6	6.0	61.2	32.8	6.0	
★ 018	530	100.0	100.0	100.0	76.1	74.8	68.8	66.5	59.0	52.5	46.3	40.3	34.4	30.0	26.4	41.0	32.6	26.4	

Silt	Sand			Gravel	
	Fine	Medium	Coarse	Fine	Coarse



GRAIN SIZE ANALYSIS	Silver City Exploration	SOURCE/TP#: 906-6566
Source Motors Ltd.	km 1635.8 RHS	PROJECT NO: 552-202101-1001-1-1
Hitachi 200 LC	Coordinates: Z07V N6769344m E644250m	ELEVATION: 863m

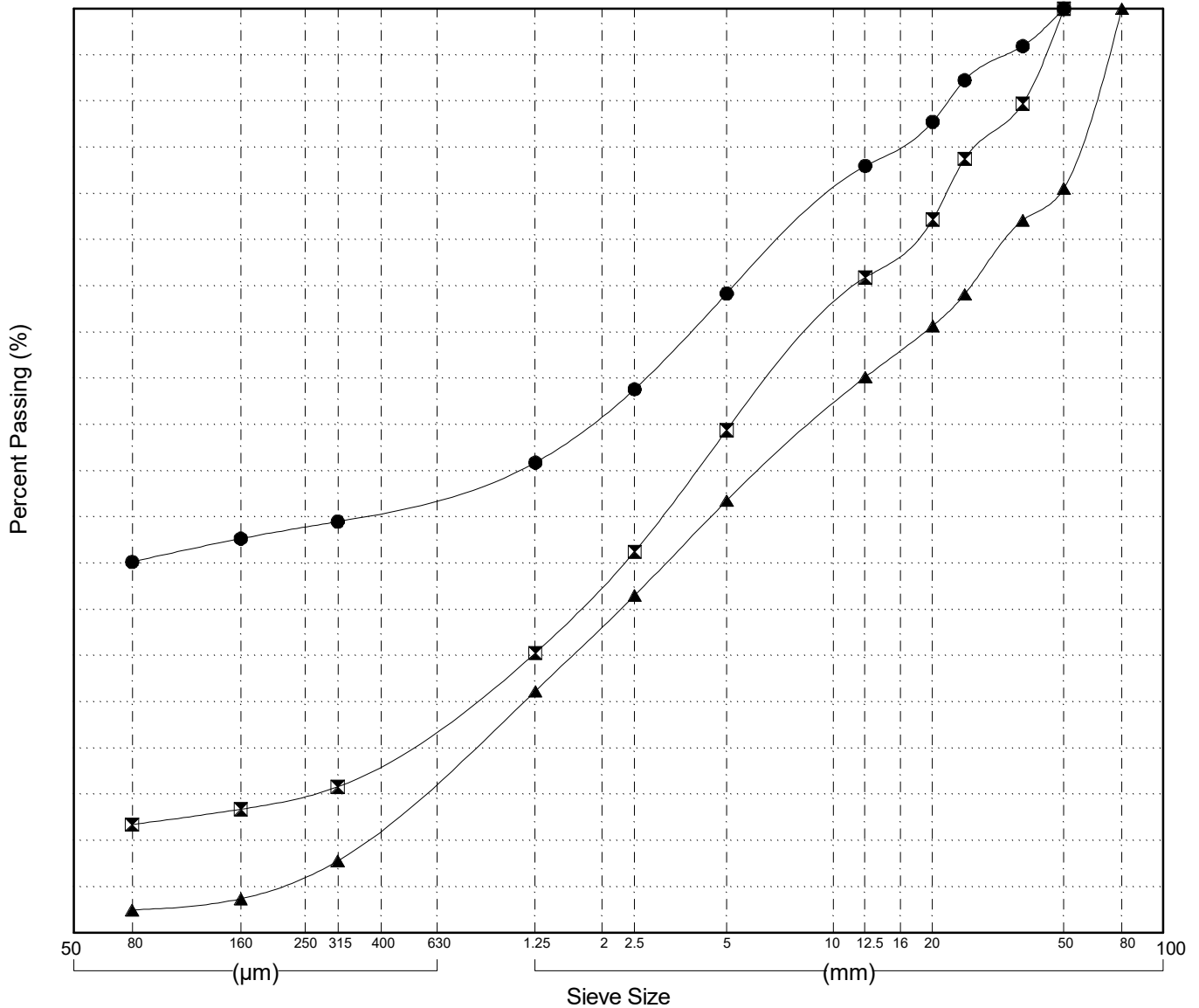
Master Revised July 2013

Field#	Lab#	Depth	Classification	%H2O	LL	PL	PI	Cc	Cu
● 019	531	0.6 to 0.9	SILTY GRAVEL with SAND(GM)	6.7	NP	NP	NP		
☒ 020	532	1.5 to 1.8	POORLY GRADED GRAVEL with SILT and SAND(GP-GM)	2.2	NP	NP	NP	6.6	194.5
▲ 021	533	2.5 to 2.8	POORLY GRADED GRAVEL with SAND(GP)	1.3	NP	NP	NP	0.6	33.3

Field#	Lab#	% PASSING	Sieve Size (mm)													% Breakdown			
			100.0	80.0	50.0	25.0	20.0	12.5	10.0	5.0	2.5	1.25	0.630	0.315	0.160	0.080	Gravel	Sand	Silt
● 019	531	100.0	100.0	100.0	100.0	92.3	87.8	83.0	79.8	69.2	58.8	50.9	47.7	44.5	42.7	40.1	30.8	29.0	40.1
☒ 020	532	100.0	100.0	100.0	83.7	77.2	70.9	67.1	54.4	41.3	30.3	23.1	15.8	13.4	11.7	45.6	42.7	11.7	
▲ 021	533	100.0	100.0	80.5	69.1	65.7	60.1	57.0	46.8	36.5	26.2	17.0	7.8	3.7	2.5	53.2	44.3	2.5	

Silt	Sand			Gravel	
	Fine	Medium	Coarse	Fine	Coarse



Highways and Public Works  
Transportation Engineering Branch

LOGGED BY: K.Elmer  
COMPILED BY: R.Stilwell  
REVIEWED BY:

Pit # 115G-07  
Complete: 10/17/2016 11:15:00 AM  
Page 1 of 1

GRAIN SIZE ANALYSIS	Silver City Exploration	SOURCE/TP#: 906-6567
Source Motors Ltd.	km 1635.8 RHS	PROJECT NO: 552-202101-1001-1-1
Hitachi 200 LC	Coordinates: Z07V N6769449m E644224m	ELEVATION: 864m

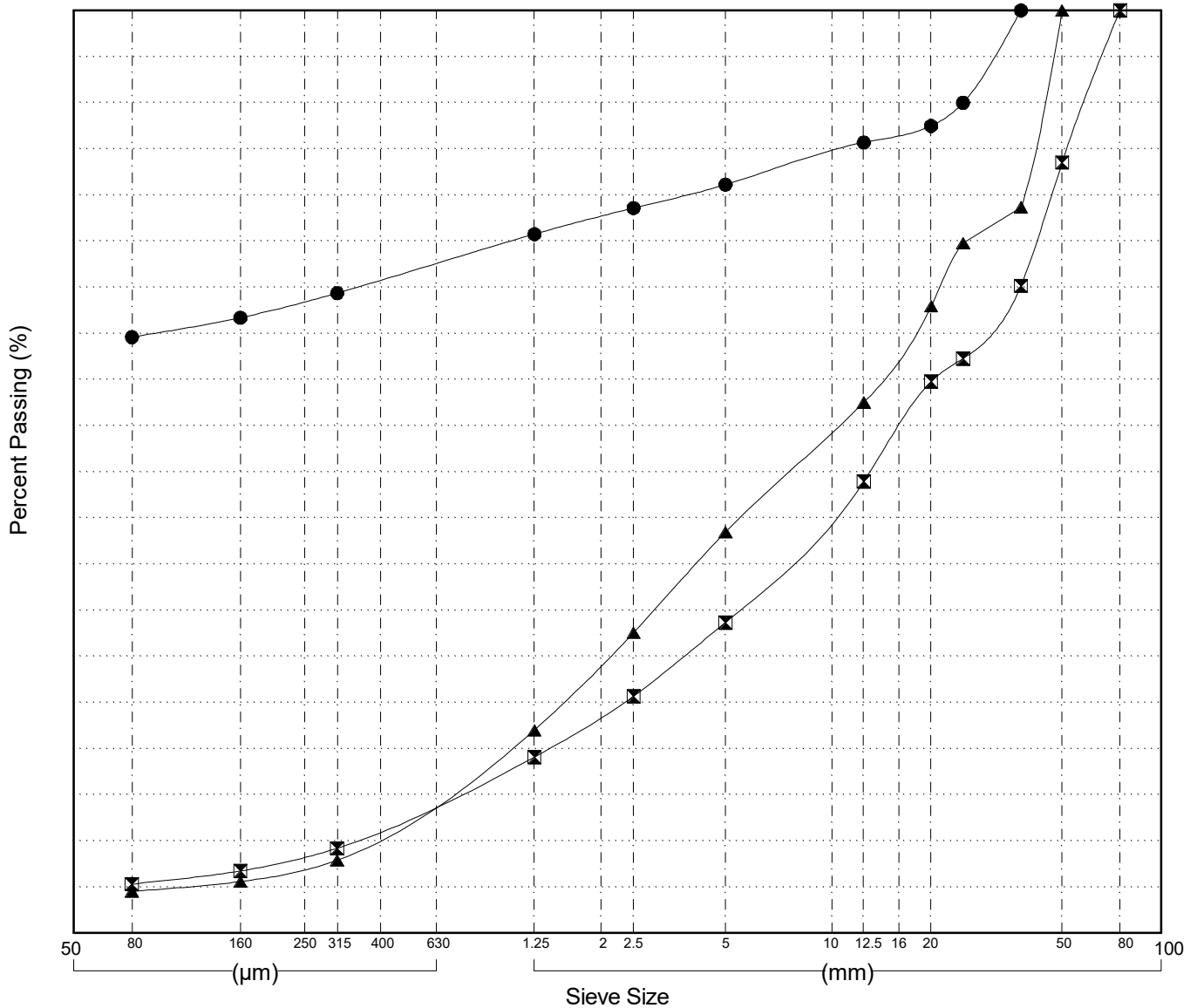
Master Revised July 2013

Field#	Lab#	Depth	Classification	%H2O	LL	PL	PI	Cc	Cu
● 022	534	0.4 to 0.7	GRAVELLY SILT with SAND(ML)	10.7	NP	NP	NP		
☒ 023	535	1.5 to 1.8	WELL-GRADED GRAVEL with SILT and SAND(GW-GM)	1.6	NP	NP	NP	1.7	57.8
▲ 024	536	2.5 to 2.8	POORLY GRADED GRAVEL with SAND(GP)	1.6	NP	NP	NP	0.8	36.1

Field#	Lab#	% PASSING	Sieve Size													% Breakdown				
			100.0	80.0	50.0	25.0	20.0	12.5	10.0	5.0	2.5	1.25	0.630	0.315	0.160	0.080	Gravel	Sand	Silt	Clay
● 022	534	100.0	100.0	100.0	100.0	90.0	87.5	85.7	84.6	81.1	78.6	75.7	72.6	69.4	66.7	64.6	18.9	16.5	64.6	
☒ 023	535	100.0	100.0	83.5	62.3	59.8	48.9	45.4	33.7	25.7	19.1	14.2	9.2	6.7	5.3		66.3	28.3	5.3	
▲ 024	536	100.0	100.0	100.0	74.8	67.9	57.5	54.3	43.4	32.6	22.0	15.0	7.9	5.6	4.5		56.6	38.9	4.5	

Silt	Sand			Gravel	
	Fine	Medium	Coarse	Fine	Coarse



GRAIN SIZE ANALYSIS	Silver City Exploration	SOURCE/TP#: 906-6568
Source Motors Ltd.	km 1635.8 RHS	PROJECT NO: 552-202101-1001-1-1
Hitachi 200 LC	Coordinates: Z07V N6769224m E644076m	ELEVATION: 858m

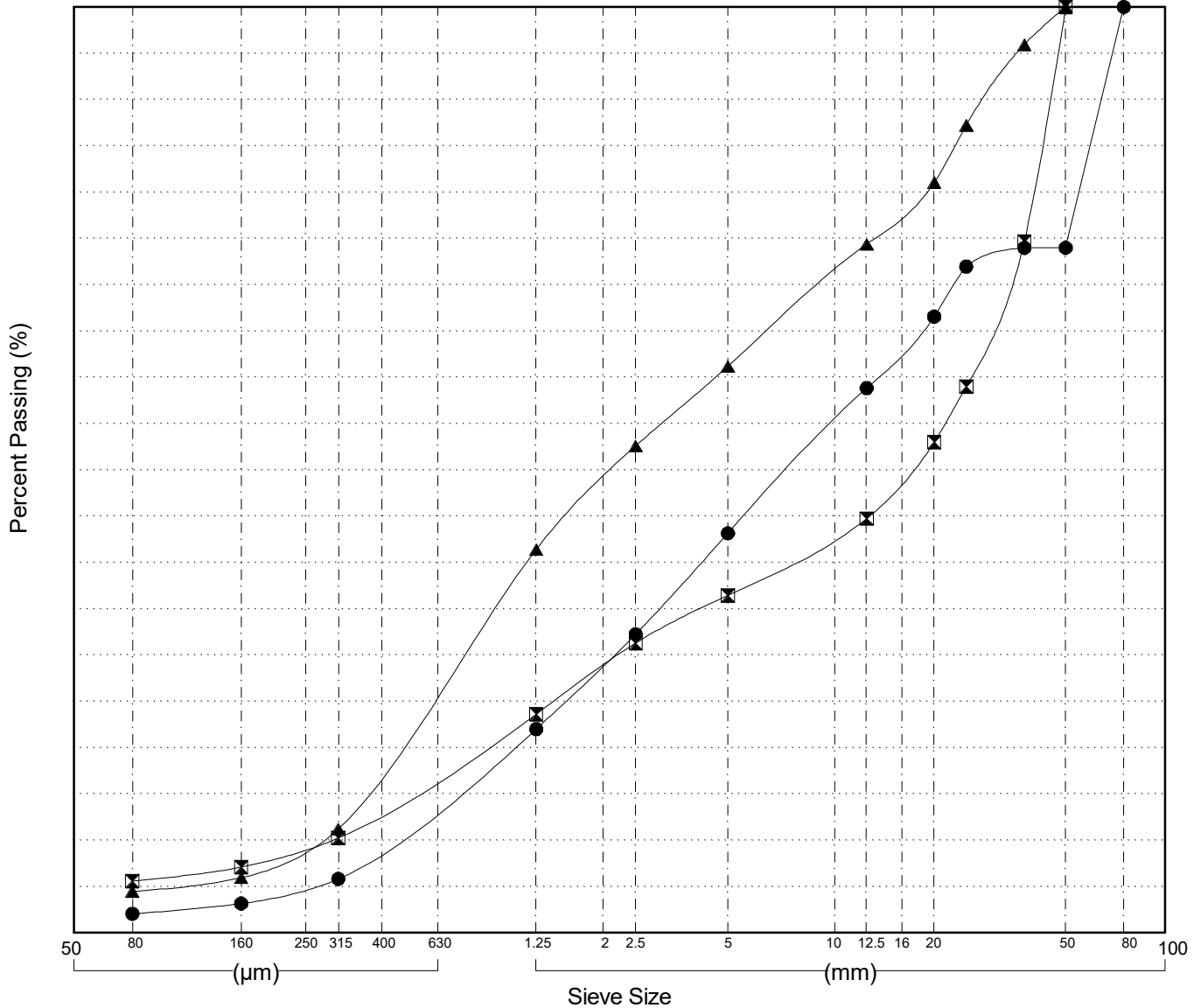
Master Revised July 2013

Field#	Lab#	Depth	Classification	%H2O	LL	PL	PI	Cc	Cu
● 025	537	0.5 to 0.8	POORLY GRADED GRAVEL with SAND(GP)	1.7	NP	NP	NP	0.8	29.9
☒ 026	538	1.5 to 1.8	POORLY GRADED GRAVEL with SILT and SAND(GP-GM)	2.1	NP	NP	NP	0.6	85.8
▲ 027	539	3.0 to 3.3	POORLY GRADED SAND with GRAVEL(SP)	2.5	NP	NP	NP	0.5	16.2

Field#	Lab#	100.0	80.0	50.0	25.0	20.0	12.5	10.0	5.0	2.5	1.25	0.630	0.315	0.160	0.080	% Breakdown			
		% PASSING														Gravel	Sand	Silt	Clay
● 025	537	100.0	100.0	74.0	72.0	66.6	58.8	55.2	43.2	32.2	22.0	14.0	5.8	3.2	2.1	56.8	41.1	2.1	
☒ 026	538	100.0	100.0	100.0	59.0	53.0	44.8	42.8	36.4	31.3	23.6	17.0	10.2	7.1	5.6	63.6	30.8	5.6	
▲ 027	539	100.0	100.0	100.0	87.2	81.0	74.4	71.3	61.2	52.6	41.4	26.4	11.2	6.0	4.5	38.8	56.7	4.5	

Silt	Sand			Gravel	
	Fine	Medium	Coarse	Fine	Coarse



Highways and Public Works  
Transportation Engineering Branch

LOGGED BY: K.Elmer  
COMPILED BY: R.Stilwell  
REVIEWED BY:

Pt # 115G-07  
Complete: 10/17/2016 12:48:00 PM  
Page 1 of 1

GRAIN SIZE ANALYSIS	Silver City Exploration	SOURCE/TP#: 906-6569
Source Motors Ltd.	km 1635.8 RHS	PROJECT NO: 552-202101-1001-1-1
Hitachi 200 LC	Coordinates: Z07V N6769337m E644100m	ELEVATION: 859m

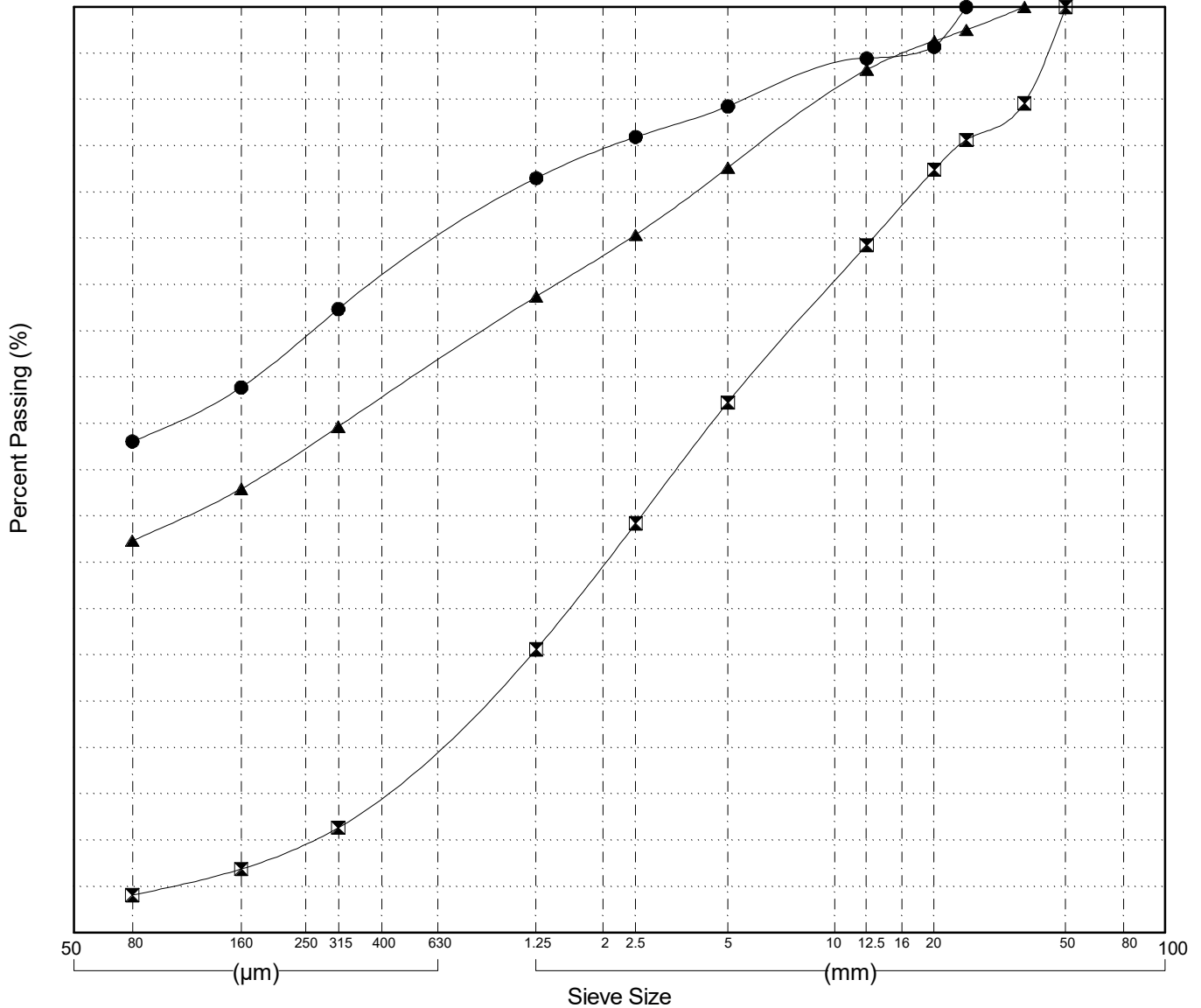
Master Revised July 2013

Field#	Lab#	Depth	Classification	%H <sub>2</sub> O	LL	PL	PI	C <sub>c</sub>	C <sub>u</sub>
● 028	540	0.5 to 0.8	SANDY SILT (ML)	3.2	NP	NP	NP		
☒ 029	541	1.7 to 2.0	WELL-GRADED SAND with GRAVEL (SW)	1.3	NP	NP	NP	1.0	21.7
▲ 030	542	3.0 to 3.3	SILTY SAND with GRAVEL (SM)	10.6	NP	NP	NP		

Field#	Lab#	% PASSING	100.0	80.0	50.0	25.0	20.0	12.5	10.0	5.0	2.5	1.25	0.630	0.315	0.160	0.080	% Breakdown			
			Gravel	Sand	Silt	Clay														
● 028	540	100.0	100.0	100.0	100.0	95.7	94.4	93.2	89.3	86.0	81.5	74.5	67.4	58.9	53.1	10.7	36.2	53.1		
☒ 029	541	100.0	100.0	100.0	85.6	82.4	74.3	70.4	57.3	44.2	30.6	21.0	11.4	6.9	4.1	42.7	53.2	4.1		
▲ 030	542	100.0	100.0	100.0	97.5	96.3	93.2	90.8	82.6	75.4	68.7	61.7	54.7	47.9	42.4	17.4	40.3	42.4		

Silt	Sand			Gravel	
	Fine	Medium	Coarse	Fine	Coarse



GRAIN SIZE ANALYSIS	Silver City Exploration	SOURCE/TP#: 906-6570
Source Motors Ltd.	km 1635.8 RHS	PROJECT NO: 552-202101-1001-1-1
Hitachi 200 LC	Coordinates: Z07V N6769443m E644024m	ELEVATION: 860m

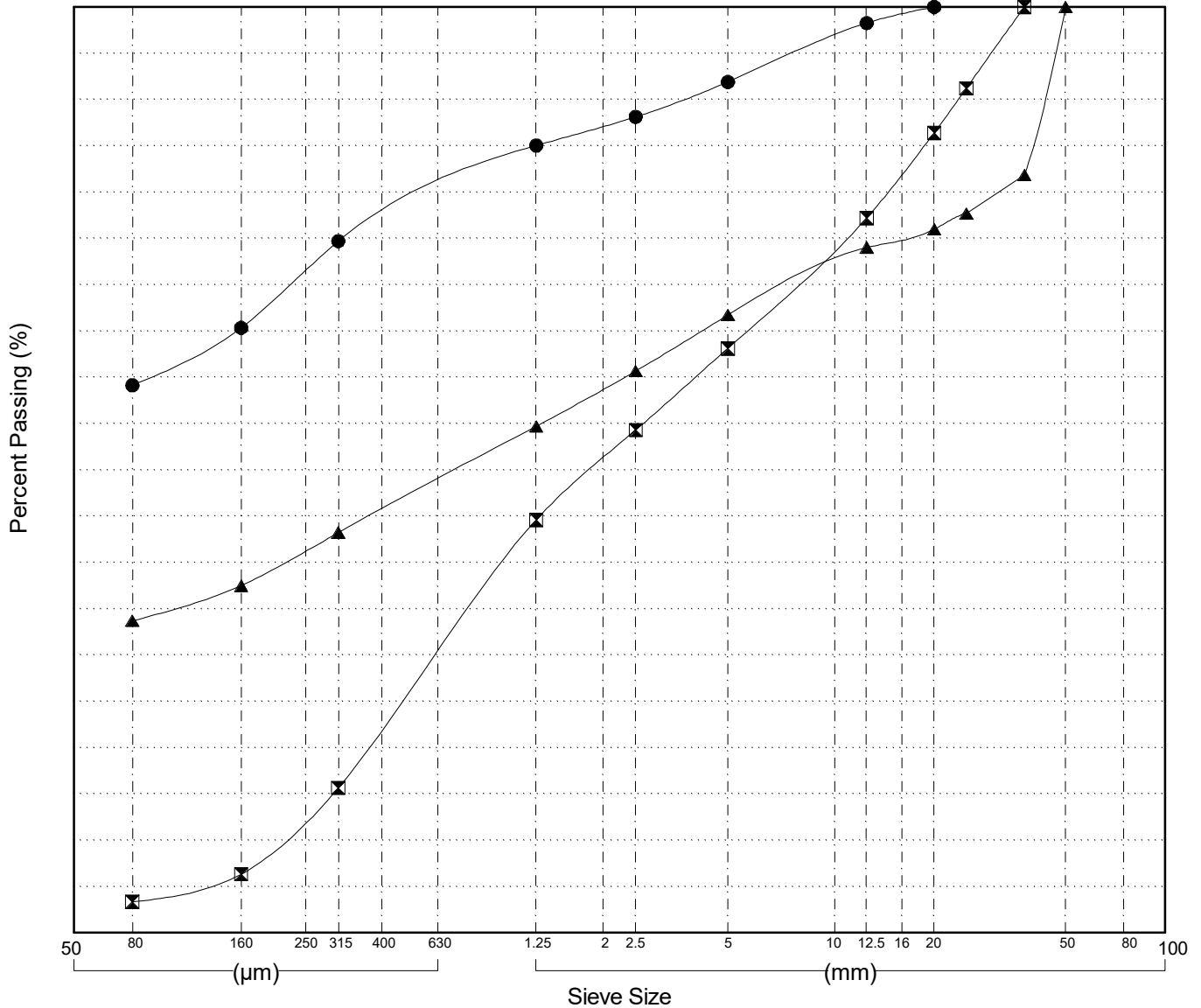
Master Revised July 2013

Field#	Lab#	Depth	Classification	%H2O	LL	PL	PI	Cc	Cu
● 031	543	0.5 to 0.8	SANDY SILT (ML)	6.0	NP	NP	NP		
☒ 032	544	1.2 to 1.5	POORLY GRADED SAND with GRAVEL (SP)	1.7	NP	NP	NP	0.5	18.1
▲ 033	545	3.0 to 3.3	SILTY GRAVEL with SAND (GM)	7.7	NP	NP	NP		

Field#	Lab#	% PASSING	100.0	80.0	50.0	25.0	20.0	12.5	10.0	5.0	2.5	1.25	0.630	0.315	0.160	0.080	% Breakdown			
			Gravel	Sand	Silt	Clay														
● 031	543	100.0	100.0	100.0	100.0	100.0	98.3	96.8	91.9	88.1	85.0	79.9	74.7	65.3	59.1	8.1	32.8	59.1		
☒ 032	544	100.0	100.0	100.0	91.2	86.4	77.2	74.0	63.1	54.3	44.6	30.2	15.7	6.3	3.3	36.9	59.8	3.3		
▲ 033	545	100.0	100.0	100.0	77.7	76.0	74.0	72.3	66.7	60.7	54.7	49.0	43.2	37.5	33.7	33.3	33.0	33.7		

Silt	Sand			Gravel	
	Fine	Medium	Coarse	Fine	Coarse



GRAIN SIZE ANALYSIS	Silver City Exploration	SOURCE/TP#: 906-6571
Source Motors Ltd.	km 1635.8 RHS	PROJECT NO: 552-202101-1001-1-1
Hitachi 200 LC	Coordinates: Z07V N6769451m E644073m	ELEVATION: 861m

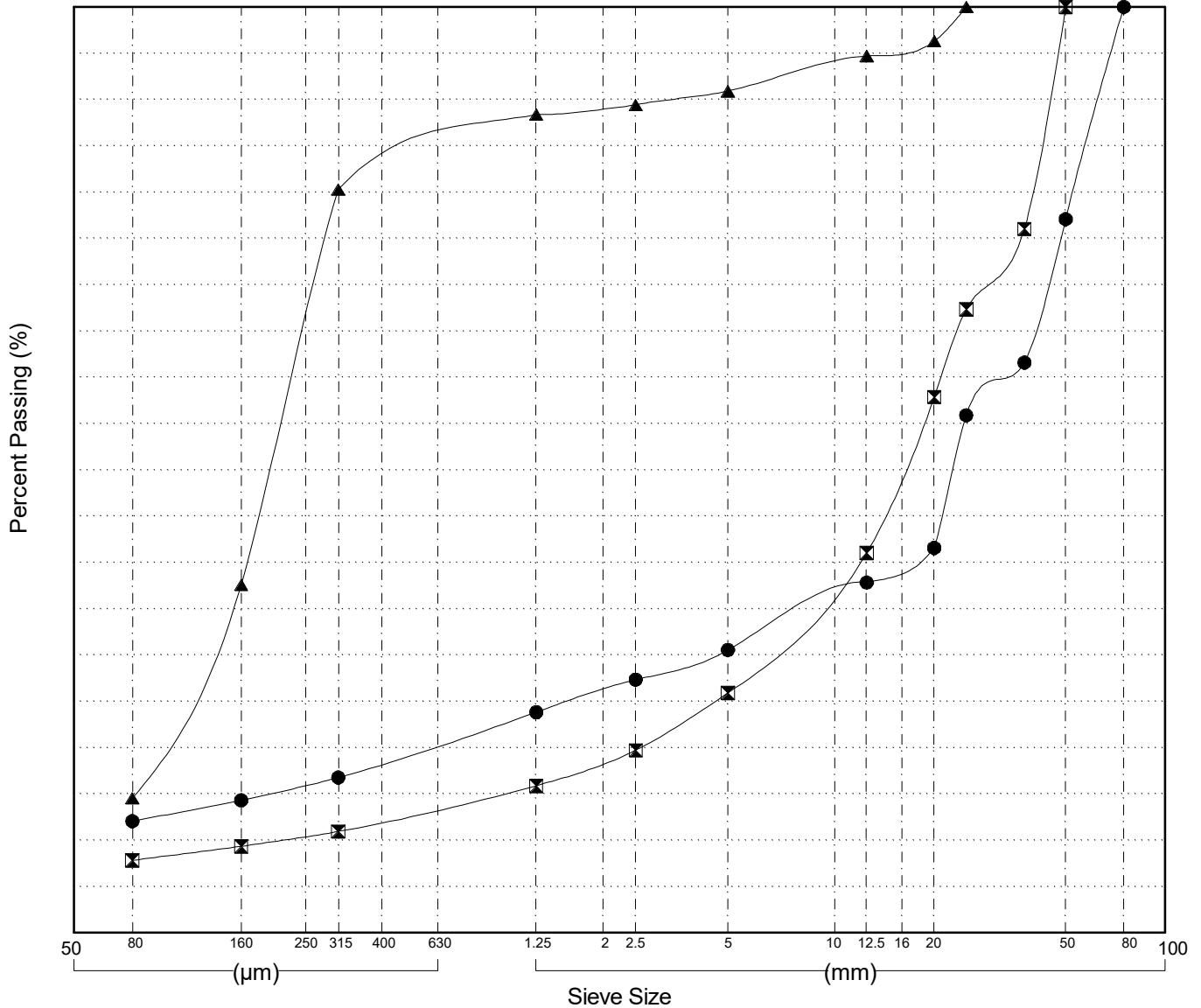
Master Revised July 2013

Field#	Lab#	Depth	Classification	%H2O	LL	PL	PI	Cc	Cu
● 034	546	1.0 to 1.3	SILTY GRAVEL with SAND(GM)	2.5	NP	NP	NP	14.4	893.7
☒ 035	547	2.0 to 2.4	POORLY GRADED GRAVEL with SILT and SAND(GP-GM)	4.9	NP	NP	NP	8.6	100.0
▲ 036	548	3.0 to 3.3	SILTY SAND(SM)	3.1	NP	NP	NP		

Field#	Lab#	% PASSING	Sieve Size (mm)													% Breakdown			
			100.0	80.0	50.0	25.0	20.0	12.5	10.0	5.0	2.5	1.25	0.630	0.315	0.160	0.080	Gravel	Sand	Silt
● 034	546	100.0	100.0	77.1	55.9	41.6	37.8	36.2	30.5	27.3	23.8	20.3	16.8	14.3	12.1	69.5	18.5	12.1	
☒ 035	547	100.0	100.0	100.0	67.3	57.9	41.0	37.5	25.9	19.7	15.9	13.4	11.0	9.4	7.8	74.1	18.1	7.8	
▲ 036	548	100.0	100.0	100.0	100.0	96.3	94.7	93.8	90.9	89.4	88.4	84.3	80.3	37.6	14.5	9.1	76.4	14.5	

Silt	Sand			Gravel	
	Fine	Medium	Coarse	Fine	Coarse



Highways and Public Works  
Transportation Engineering Branch

LOGGED BY: K.Elmer  
COMPILED BY: R.Stilwell  
REVIEWED BY:

Pit # 115G-07  
Complete: 10/17/2016 3:50:00 PM

GRAIN SIZE ANALYSIS	Silver City Exploration	SOURCE/TP#: 906-6572
Source Motors Ltd.	km 1635.8 RHS	PROJECT NO: 552-202101-1001-1-1
Hitachi 200 LC	Coordinates: Z07V N6769333m E643997m	ELEVATION: 857m

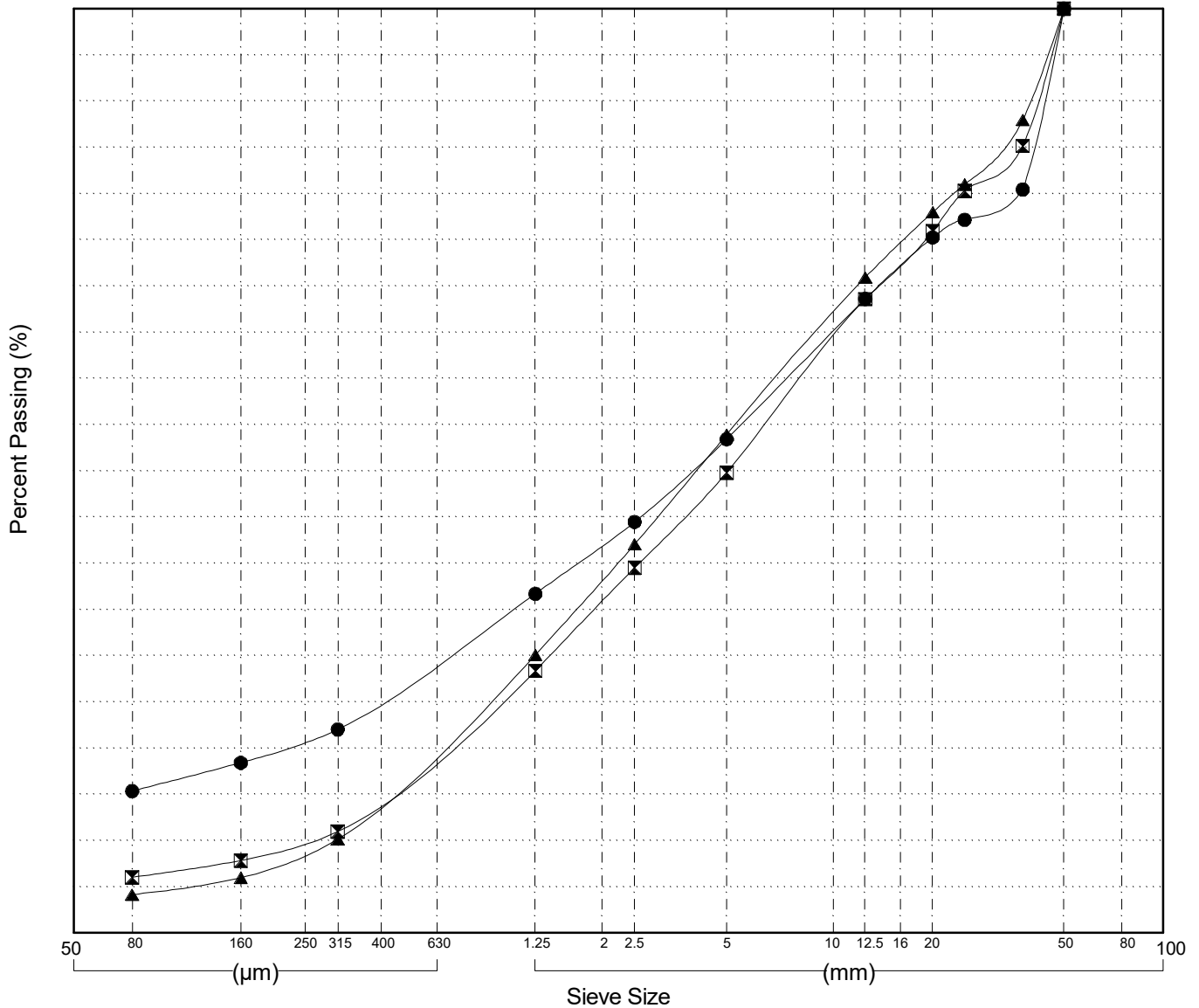
Master Revised July 2013

Field#	Lab#	Depth	Classification	%H2O	LL	PL	PI	Cc	Cu
● 037	549	0.6 to 0.9	SILTY GRAVEL with SAND(GM)	3.2	NP	NP	NP		
☒ 038	550	1.2 to 1.5	POORLY GRADED GRAVEL with SILT and SAND(GP-GM)	0.6	NP	NP	NP	0.9	31.5
▲ 039	551	2.8 to 3.0	POORLY GRADED SAND with GRAVEL(SP)	1.2	NP	NP	NP	0.7	21.8

Field#	Lab#	% PASSING	Sieve Size (mm)													% Breakdown				
			100.0	80.0	50.0	25.0	20.0	12.5	10.0	5.0	2.5	1.25	0.630	0.315	0.160	0.080	Gravel	Sand	Silt	Clay
● 037	549	100.0	100.0	100.0	100.0	77.2	75.2	68.6	65.1	53.4	44.5	36.7	29.4	22.0	18.4	15.4	46.6	38.1	15.4	
☒ 038	550	100.0	100.0	100.0	80.3	75.9	68.6	64.2	49.8	39.5	28.4	19.7	11.0	7.8	6.0		50.2	43.8	6.0	
▲ 039	551	100.0	100.0	100.0	81.0	78.0	70.9	67.0	53.9	42.1	30.1	20.2	10.1	6.0	4.2		46.1	49.8	4.2	

Silt	Sand			Gravel	
	Fine	Medium	Coarse	Fine	Coarse



Highways and Public Works  
Transportation Engineering Branch

LOGGED BY: K.Elmer  
COMPILED BY: R.Stilwell  
REVIEWED BY:

Pit # 115G-07  
Complete: 10/17/2016 5:00:00 PM

GRAIN SIZE ANALYSIS	Silver City Exploration	SOURCE/TP#: 906-6573
Source Motors Ltd.	km 1635.8 RHS	PROJECT NO: 552-202101-1001-1-1
Hitachi 200 LC	Coordinates: Z07V N6769476m E643952m	ELEVATION: 860m

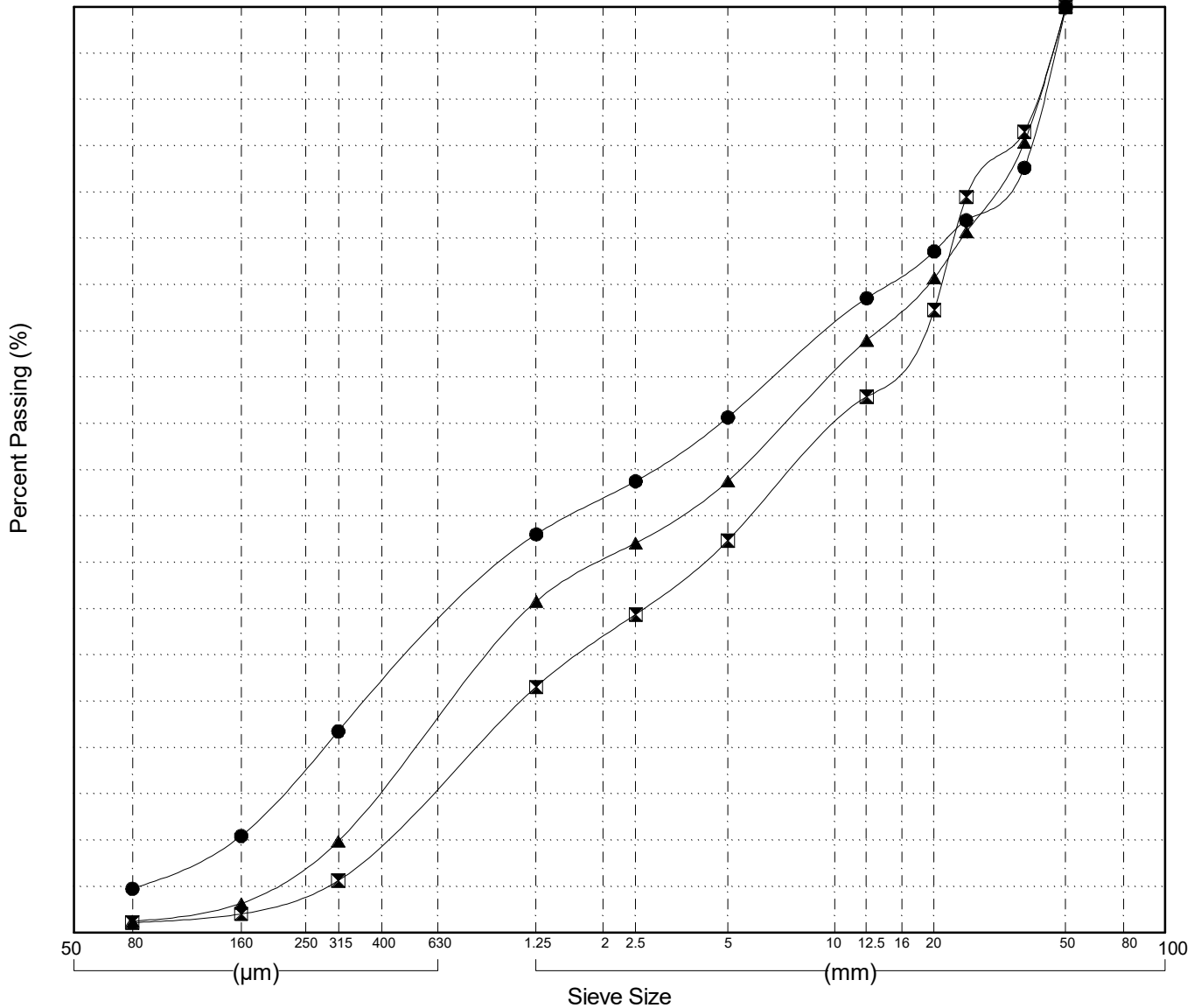
Master Revised July 2013

Field#	Lab#	Depth	Classification	%H2O	LL	PL	PI	Cc	Cu
● 040	552	0.4 to 0.7	POORLY GRADED SAND with GRAVEL(SP)	0.6	NP	NP	NP	0.3	43.7
☒ 041	553	1.3 to 1.6	POORLY GRADED GRAVEL with SAND(GP)	0.6	NP	NP	NP	0.5	33.1
▲ 042	554	2.4 to 2.8	POORLY GRADED GRAVEL with SAND(GP)	0.7	NP	NP	NP	0.3	30.6

Field#	Lab#	% PASSING	Sieve Size (mm)													% Breakdown			
			100.0	80.0	50.0	25.0	20.0	12.5	10.0	5.0	2.5	1.25	0.630	0.315	0.160	0.080	Gravel	Sand	Silt
● 040	552	100.0	100.0	100.0	100.0	77.0	73.6	68.5	65.6	55.7	48.8	43.0	32.5	21.8	10.5	4.8	44.3	50.9	4.8
☒ 041	553	100.0	100.0	100.0	79.5	67.3	57.9	54.3	42.4	34.4	26.6	16.2	5.6	2.0	1.1	57.6	41.2	1.1	
▲ 042	554	100.0	100.0	100.0	75.7	70.7	64.0	60.5	48.8	42.1	35.8	22.9	9.9	3.2	1.3	51.2	47.5	1.3	

Silt	Sand			Gravel	
	Fine	Medium	Coarse	Fine	Coarse



Highways and Public Works  
Transportation Engineering Branch

LOGGED BY: K.Elmer  
COMPILED BY: R.Stilwell  
REVIEWED BY:

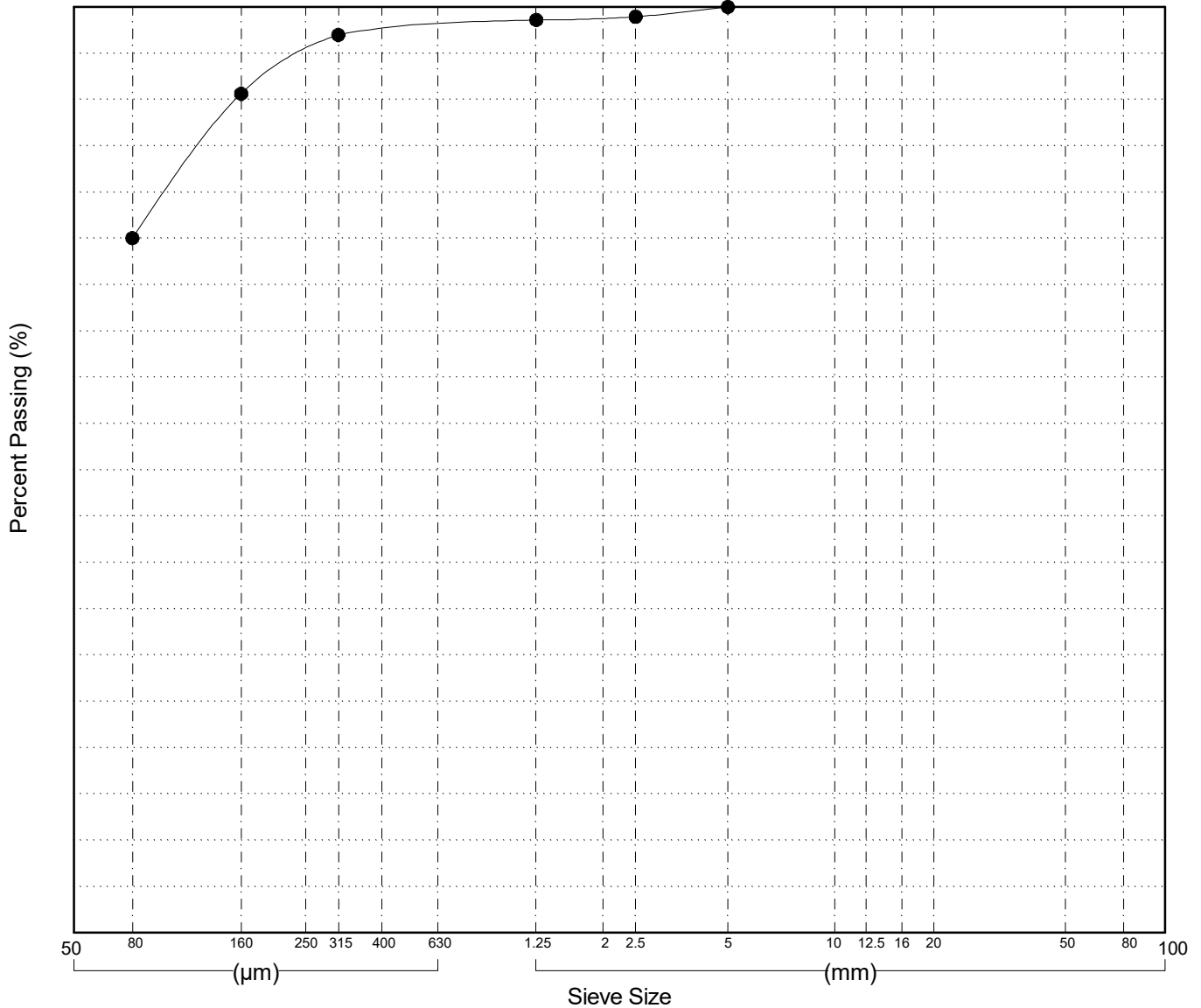
Pt # 115G-07  
Complete: 10/17/2016 5:40:00 PM

GRAIN SIZE ANALYSIS	Silver City Exploration	SOURCE/TP#: 906-6575
Source Motors Ltd.	km 1635.8 RHS	PROJECT NO: 552-202101-1001-1-1
Hitachi 200 LC	Coordinates: Z07V N6769234m E643916m	ELEVATION: 855m

Master Revised July 2013

Field#	Lab#	Depth	Classification													%H <sub>2</sub> O	LL	PL	PI	C <sub>c</sub>	C <sub>u</sub>
● 043	555	1.0 to 1.4	SILT with SAND(ML)													12.0	NP	NP	NP		
Field#	Lab#		100.0	80.0	50.0	25.0	20.0	12.5	10.0	5.0	2.5	1.25	0.630	0.315	0.160	0.080	%Breakdown				
● 043	555	% PASSING	100.0	100.0	100.0	100.0	100.0	100.0	100.0	100.0	98.9	98.6	97.8	97.0	90.6	75.0	Gravel	Sand	Silt	Clay	
																	0.0	25.0	75.0		

Silt	Sand			Gravel	
	Fine	Medium	Coarse	Fine	Coarse



GRAIN SIZE ANALYSIS	Silver City Exploration	SOURCE/TP#: 906-6576
Source Motors Ltd.	km 1635.8 RHS	PROJECT NO: 552-202101-1001-1-1
Hitachi 200 LC	Coordinates: Z07V N6769366m E643891m	ELEVATION: 857m

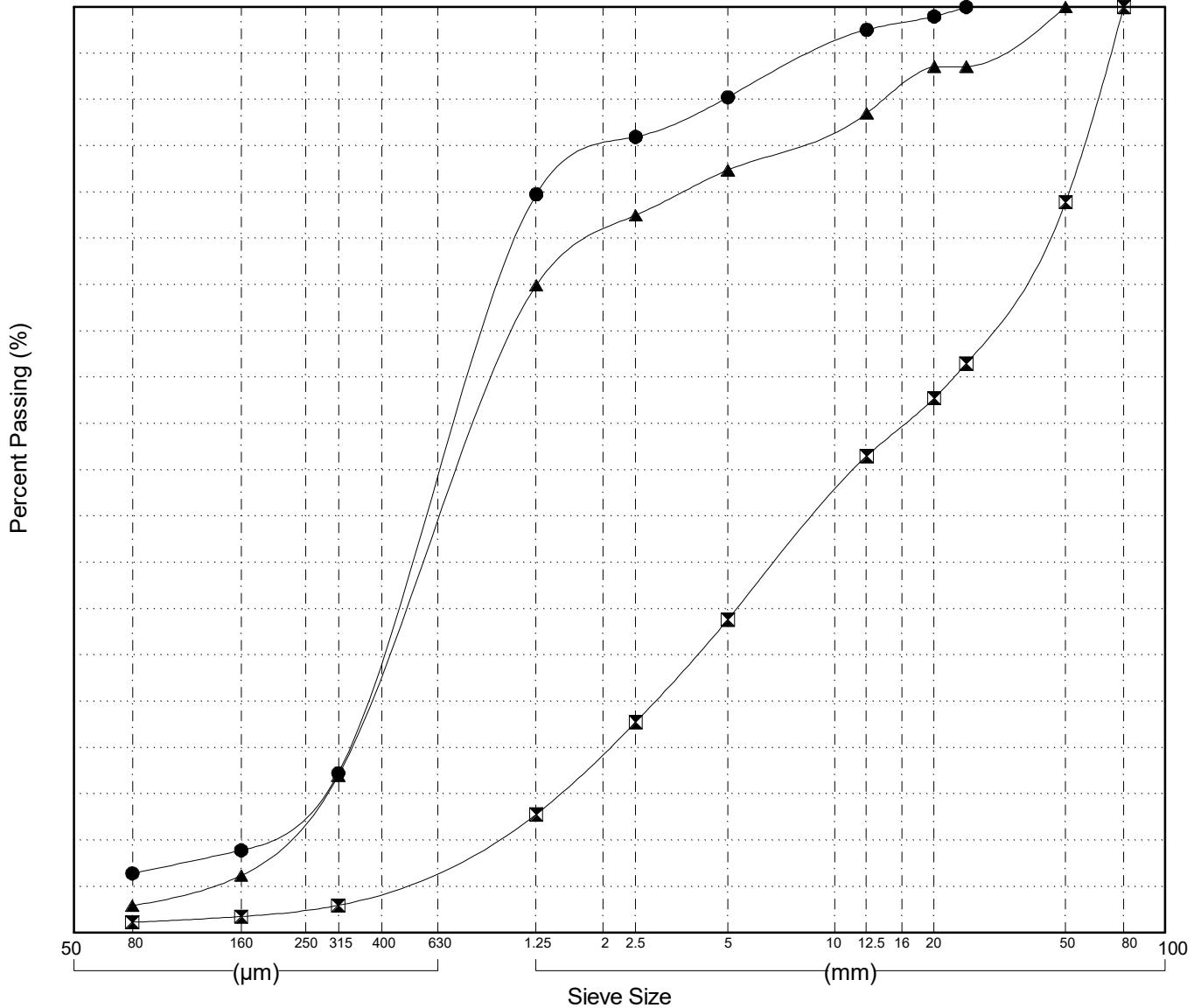
Master Revised July 2013

Field#	Lab#	Depth	Classification	%H2O	LL	PL	PI	Cc	Cu
● 044	556	0.3 to 0.5	POORLY GRADED SAND with SILT(SP-SM)	2.8	NP	NP	NP	1.2	4.6
☒ 045	557	1.0 to 1.4	POORLY GRADED GRAVEL with SAND(GP)	0.6	NP	NP	NP	0.7	27.1
▲ 046	558	3.2 to 3.5	POORLY GRADED SAND with GRAVEL(SP)	2.2	NP	NP	NP	1.0	4.7

Field#	Lab#	100.0	80.0	50.0	25.0	20.0	12.5	10.0	5.0	2.5	1.25	0.630	0.315	0.160	0.080	% Breakdown			
		% PASSING														Gravel	Sand	Silt	Clay
● 044	556	100.0	100.0	100.0	100.0	99.0	97.5	95.9	90.2	86.0	79.8	48.7	17.2	8.9	6.4	9.8	83.8	6.4	
☒ 045	557	100.0	100.0	78.9	61.5	57.7	51.5	47.4	33.8	22.8	12.8	7.9	3.0	1.8	1.1	66.2	32.7	1.1	
▲ 046	558	100.0	100.0	100.0	93.5	93.5	88.5	87.1	82.4	77.5	69.9	43.6	17.0	6.2	2.9	17.6	79.4	2.9	

Silt	Sand			Gravel	
	Fine	Medium	Coarse	Fine	Coarse

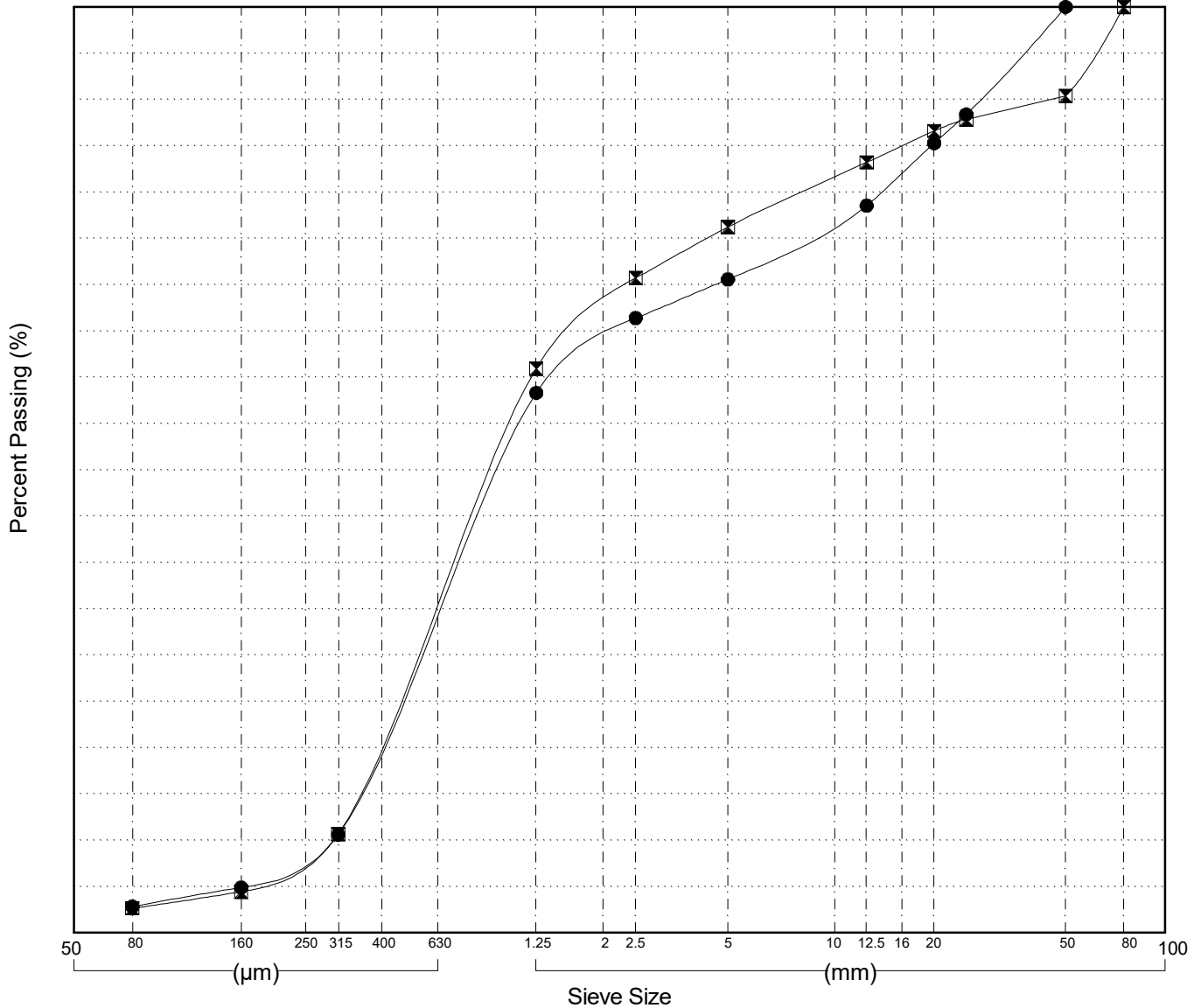


GRAIN SIZE ANALYSIS	Silver City Exploration	SOURCE/TP#: 906-6577
Source Motors Ltd.	km 1635.8 RHS	PROJECT NO: 552-202101-1001-1-1
Hitachi 200 LC	Coordinates: Z07V N6769337m E643806m	ELEVATION: 855m

Master Revised July 2013

Field#	Lab#	Depth	Classification	%H2O	LL	PL	PI	Cc	Cu											
● 047	559	0.6 to 1.0	POORLY GRADED SAND with GRAVEL(SP)	0.7	NP	NP	NP	0.7	4.9											
☒ 048	560	1.5 to 1.8	POORLY GRADED SAND with GRAVEL(SP)	1.1	NP	NP	NP	0.8	4.2											
Field#	Lab#	100.0	80.0	50.0	25.0	20.0	12.5	10.0	5.0	2.5	1.25	0.630	0.315	0.160	0.080	% Breakdown				
● 047	559	100.0	100.0	100.0	88.4	85.3	78.5	76.7	70.6	66.4	58.3	34.6	10.6	4.9	2.8	Gravel	Sand	Silt	Clay	
☒ 048	560	100.0	100.0	90.4	87.8	86.6	83.2	81.6	76.2	70.7	60.9	36.0	10.7	4.4	2.6	29.4	67.7	2.8		

Silt	Sand			Gravel	
	Fine	Medium	Coarse	Fine	Coarse



GRAIN SIZE ANALYSIS	Silver City Exploration	SOURCE/TP#: 906-6578
Source Motors Ltd.	km 1635.8 RHS	PROJECT NO: 552-202101-1001-1-1
Hitachi 200 LC	Coordinates: Z07V N6769417m E643819m	ELEVATION: 856m

Master Revised July 2013

Field#	Lab#	Depth	Classification	%H2O	LL	PL	PI	Cc	Cu
● 049	561	1.0 to 1.3	POORLY GRADED SAND with GRAVEL(SP)	0.9	NP	NP	NP	0.8	6.3
☒ 050	562	2.0 to 2.3	POORLY GRADED SAND with GRAVEL(SP)	1.2	NP	NP	NP	0.6	7.6
▲ 051	563	2.5 to 3.0	POORLY GRADED GRAVEL with SAND(GP)	2.7	NP	NP	NP	0.9	13.7

Field#	Lab#	% PASSING	Sieve Size (mm)													% Breakdown			
			100.0	80.0	50.0	25.0	20.0	12.5	10.0	5.0	2.5	1.25	0.630	0.315	0.160	0.080	Gravel	Sand	Silt
● 049	561	100.0	100.0	100.0	100.0	98.1	94.9	93.4	90.0	78.5	61.1	38.5	21.9	5.1	2.6	1.7	21.5	76.8	1.7
☒ 050	562	100.0	100.0	100.0	95.3	93.2	88.9	84.9	71.4	56.4	39.6	22.5	5.2	2.9	1.6	28.6	69.7	1.6	
▲ 051	563	100.0	100.0	100.0	84.0	79.7	73.9	68.5	50.5	36.3	22.2	12.8	3.3	1.7	1.2	49.5	49.4	1.2	

Silt	Sand			Gravel	
	Fine	Medium	Coarse	Fine	Coarse

