


SUBSURFACE EXPLORATION AND TEST REPORT		Alaska Highway		SOURCE/TP#: 908-6551					
Source Motors Ltd.		Pine Valley Exploration, km 1785.3 LHS		PROJECT NO: 552-202101-1001-01-1					
Hitachi Ex200		Coordinates: Z07V N6854281m E548135m		ELEVATION: 733m					
SAMPLE TYPE		<input type="checkbox"/> UNDISTURBED <input type="checkbox"/> DCPT <input checked="" type="checkbox"/> AUGER <input type="checkbox"/> BULK <input checked="" type="checkbox"/> SPT <input type="checkbox"/> CORE							
ELEV. (m)	PLASTIC M.C LIQUID 0 20 40 60 80 100	★ Percent Fines★ ◆ Percent Sand◆ ■ Percent Gravel■		Sample Type	Sample #	SOIL SYMBOL	DCPT/SPT Blows/30cm	SOIL DESCRIPTION	Depth (m)
		0 20 40 60 80 100							
732		★	◆	■	001	GP		ORGANICS	
								Volcanic ash	
								SAND - some gravel, trace silt	
								POORLY GRADED GRAVEL with SAND	1
731								END of HOLE -Wrong location	2
		Highways and Public Works Transportation Engineering Branch				LOGGED BY: K.Elmer		Termination Depth: 2m	
						COMPILED BY: R.Stilwell		Complete: 10/15/2016 11:30:00 AM	
						REVIEWED BY:		Pit #: 115F-02 Page 1 of 2	

SUBSURFACE EXPLORATION AND TEST REPORT	Alaska Highway	SOURCE/TP#: 908-6551
Source Motors Ltd.	Pine Valley Exploration, km 1785.3 LHS	PROJECT NO: 552-202101-1001-01-1
Hitachi Ex200	Coordinates: Z07V N6854281m E548135m	ELEVATION: 733m

PHOTOS



Figure 908-6551.1
Photo of test pit 908-6551



Figure 908-6551.2
Photo of waste pile from test pit 908-6551



SUBSURFACE EXPLORATION AND TEST REPORT		Alaska Highway		SOURCE/TP#: 908-6552									
Source Motors Ltd.		Pine Valley Exploration, km 1785.3 LHS		PROJECT NO: 552-202101-1001-01-1									
Hitachi Ex200		Coordinates: Z07V N6853822m E547945m		ELEVATION: 732m									
SAMPLE TYPE		UNDISTURBED		DCPT		AUGER		BULK		SPT		CORE	
ELEV. (m)	PLASTIC M.C LIQUID 0 20 40 60 80 100		★ Percent Fines ★ ◆ Percent Sand ◆ ■ Percent Gravel ■		Sample Type	Sample #	SOIL SYMBOL	DCPT/SPT Blows/30cm	SOIL DESCRIPTION		Depth (m)		
	0 20 40 60 80 100		0 20 40 60 80 100										
										ORGANICS			
										POORLY GRADED SAND with SILT -Light brown, damp			
						002	SP-SM						
731										-Frozen	1		
						003	SM			SILTY SAND with GRAVEL -Water flowing into excavation			
										END of HOLE -hole collapsing			
730											2		



SUBSURFACE EXPLORATION AND TEST REPORT	Alaska Highway	SOURCE/TP#: 908-6552
Source Motors Ltd.	Pine Valley Exploration, km 1785.3 LHS	PROJECT NO: 552-202101-1001-01-1
Hitachi Ex200	Coordinates: Z07V N6853822m E547945m	ELEVATION: 732m

PHOTOS



Figure 908-6552.1
Photo of test pit 908-6552



Figure 908-6552.2
Photo of waste pile from test pit 908-6552

SUBSURFACE EXPLORATION AND TEST REPORT		Alaska Highway		SOURCE/TP#: 908-6553									
Source Motors Ltd.		Pine Valley Exploration, km 1785.3 LHS		PROJECT NO: 552-202101-1001-01-1									
Hitachi Ex200		Coordinates: Z07V N6854388m E547806m		ELEVATION: 726m									
SAMPLE TYPE		UNDISTURBED		DCPT		AUGER		BULK		SPT		CORE	
ELEV. (m)	PLASTICITY INDEX		PERCENT FINES		Sample Type	Sample #	SOIL SYMBOL	DCPT/SPT Blows/30cm	SOIL DESCRIPTION		Depth (m)		
	PLASTIC	LIQUID	★ Percent Fines★	◆ Percent Sand◆									
726	0	100	0	0					ORGANICS		0		
725.5	0	100	0	0		004	ML		SANDY SILT and Volcanic ash -Water flowing into hole		0.5		
725	0	100	0	0					SILT -Frozen (Vx) -Dark grey, possible plasticity END of HOLE -Water filling hole		1		
724.5	0	100	0	0		005	ML				1.5		
724	0	100	0	0							2		



Highways and Public Works
Transportation Engineering Branch

LOGGED BY: K.Elmer

Termination Depth: 1m

COMPILED BY: R.Stilwell

Complete: 10/15/2016 12:30:00 PM

REVIEWED BY:

Pit #: 115F-02

Page 1 of 2

SUBSURFACE EXPLORATION AND TEST REPORT	Alaska Highway	SOURCE/TP#: 908-6553
Source Motors Ltd.	Pine Valley Exploration, km 1785.3 LHS	PROJECT NO: 552-202101-1001-01-1
Hitachi Ex200	Coordinates: Z07V N6854388m E547806m	ELEVATION: 726m

PHOTOS



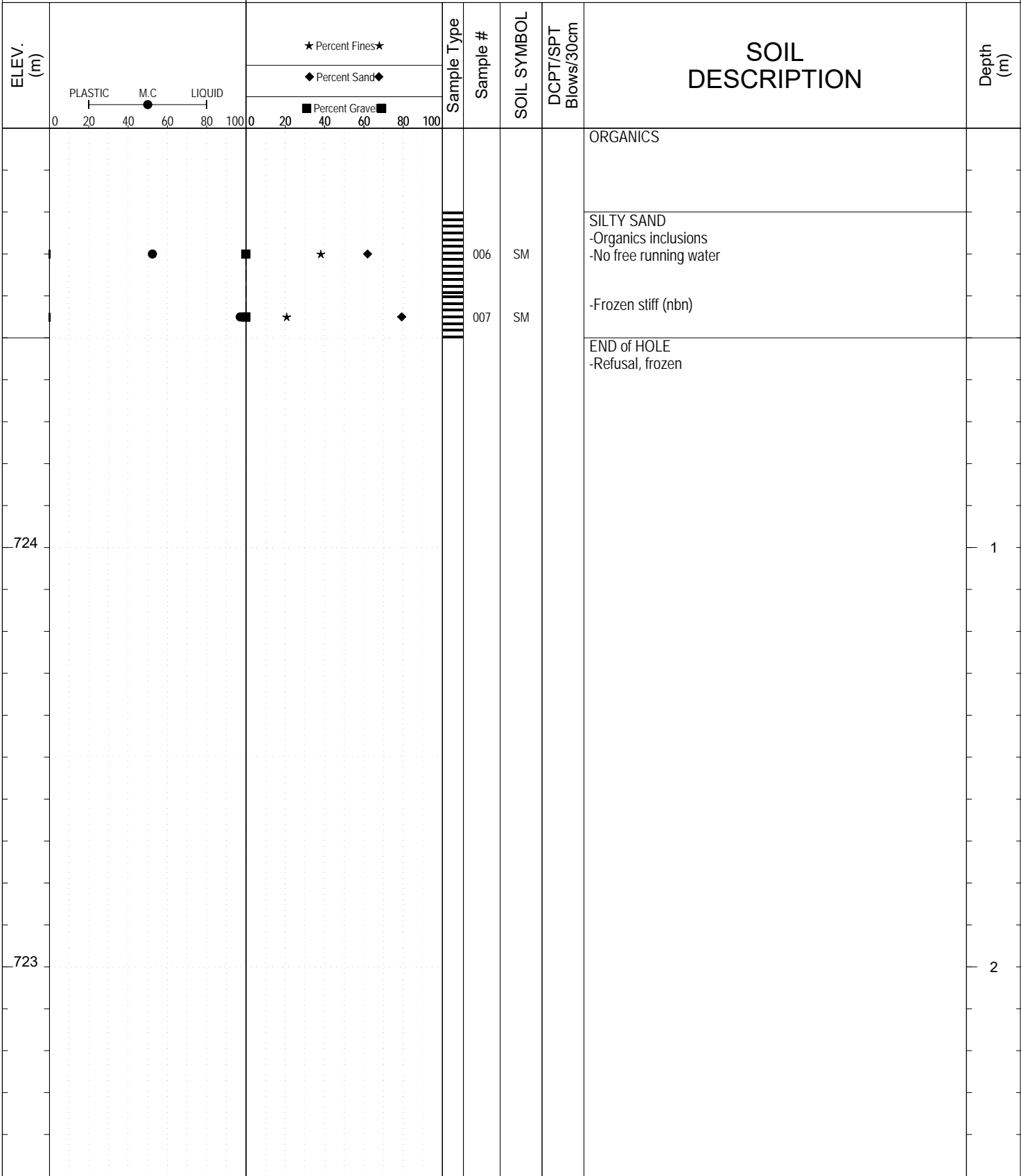
Figure 908-6553.1
Photo of excavation from test pit 908-6553



Figure 908-6553.2
Photo of test pit 908-6553

SUBSURFACE EXPLORATION AND TEST REPORT		Alaska Highway	SOURCE/TP#: 908-6554
Source Motors Ltd.		Pine Valley Exploration, km 1785.3 LHS	PROJECT NO: 552-202101-1001-01-1
Hitachi Ex200		Coordinates: Z07V N6854268m E547717m	ELEVATION: 725m

SAMPLE TYPE UNDISTURBED DCPT AUGER BULK SPT CORE



Highways and Public Works
Transportation Engineering Branch

LOGGED BY: K.Elmer	Termination Depth: 0.5m
COMPILED BY: R.Stilwell	Complete: 10/15/2016 12:55:00 PM
REVIEWED BY:	Pit #: 115F-02 Page 1 of 2

SUBSURFACE EXPLORATION AND TEST REPORT	Alaska Highway	SOURCE/TP#: 908-6554
Source Motors Ltd.	Pine Valley Exploration, km 1785.3 LHS	PROJECT NO: 552-202101-1001-01-1
Hitachi Ex200	Coordinates: Z07V N6854268m E547717m	ELEVATION: 725m

PHOTOS



Figure 908-6554.1
Photo of test pit 908-6554



Figure 908-6554.2
Photo of excavation floor of test pit 908-6554

SUBSURFACE EXPLORATION AND TEST REPORT		Alaska Highway		SOURCE/TP#: 908-6555					
Source Motors Ltd.		Pine Valley Exploration, km 1785.3 LHS		PROJECT NO: 552-202101-1001-01-1					
Hitachi Ex200		Coordinates: Z07V N6854179m E547836m		ELEVATION: 728m					
SAMPLE TYPE		<input type="checkbox"/> UNDISTURBED	<input type="checkbox"/> DCPT	<input type="checkbox"/> AUGER	<input type="checkbox"/> BULK	<input checked="" type="checkbox"/> SPT	<input type="checkbox"/> CORE		
ELEV. (m)		★ Percent Fines★		Sample Type	Sample #	SOIL SYMBOL	DCPT/SPT Blows/30cm	SOIL DESCRIPTION	Depth (m)
		◆ Percent Sand◆							
727					008	SM		ORGANICS	
					009	SM		SILTY SAND w/ Volcanic ash -Beige	
								-Very hard digging	
								END of HOLE -Refusal, hard ground	
726									1
									2
		Highways and Public Works Transportation Engineering Branch				LOGGED BY: K.Elmer		Termination Depth: 0.5m	
						COMPILED BY: R.Stilwell		Complete: 10/15/2016 1:10:00 PM	
						REVIEWED BY:		Pit #: 115F-02 Page 1 of 2	

SUBSURFACE EXPLORATION AND TEST REPORT	Alaska Highway	SOURCE/TP#: 908-6555
Source Motors Ltd.	Pine Valley Exploration, km 1785.3 LHS	PROJECT NO: 552-202101-1001-01-1
Hitachi Ex200	Coordinates: Z07V N6854179m E547836m	ELEVATION: 728m

PHOTOS



Figure 908-6555.1
Photo of waste pile and test pit 908-6555



Figure 908-6555.2
Photo of excavation from test pit 908-6555



SUBSURFACE EXPLORATION AND TEST REPORT		Alaska Highway		SOURCE/TP#: 908-6556				
Source Motors Ltd.		Pine Valley Exploration, km 1785.3 LHS		PROJECT NO: 552-202101-1001-01-1				
Hitachi Ex200		Coordinates: Z07V N6853729m E547682m		ELEVATION: 733m				
SAMPLE TYPE		<input type="checkbox"/> UNDISTURBED <input type="checkbox"/> DCPT <input checked="" type="checkbox"/> AUGER <input type="checkbox"/> BULK <input checked="" type="checkbox"/> SPT <input type="checkbox"/> CORE						
ELEV. (m)	★ Percent Fines★ ◆ Percent Sand◆ ■ Percent Grave■		Sample Type	Sample #	SOIL SYMBOL	DCPT/SPT Blows/30cm	SOIL DESCRIPTION	Depth (m)
	PLASTIC M.C LIQUID 0 20 40 60 80 100 0 20 40 60 80 100							
732				010	SP		ORGANICS POORLY GRADED SAND and Volcanic ash ORGANIC SILT -Frozen (nbn) END of HOLE -Refusal, Hard frozen ground	1
731								2



SUBSURFACE EXPLORATION AND TEST REPORT	Alaska Highway	SOURCE/TP#: 908-6556
Source Motors Ltd.	Pine Valley Exploration, km 1785.3 LHS	PROJECT NO: 552-202101-1001-01-1
Hitachi Ex200	Coordinates: Z07V N6853729m E547682m	ELEVATION: 733m

PHOTOS



Figure 908-6556.1
Photo of excavation from test pit 908-6556



Figure 908-6556.2
Photo of test pit 908-6556

SUBSURFACE EXPLORATION AND TEST REPORT		Alaska Highway		SOURCE/TP#: 908-6557				
Source Motors Ltd.		Pine Valley Exploration, km 1785.3 LHS		PROJECT NO: 552-202101-1001-01-1				
Hitachi Ex200		Coordinates: Z07V N6853611m E547589m		ELEVATION: 733m				
SAMPLE TYPE		<input type="checkbox"/> UNDISTURBED <input type="checkbox"/> DCPT <input checked="" type="checkbox"/> AUGER <input type="checkbox"/> BULK <input checked="" type="checkbox"/> SPT <input type="checkbox"/> CORE						
ELEV. (m)	PLASTIC M.C LIQUID 0 20 40 60 80 100		★ Percent Fines ★ ◆ Percent Sand ◆ ■ Percent Grave ■		SOIL SYMBOL	DCPT/SPT Blows/30cm	SOIL DESCRIPTION	Depth (m)
	0 20 40 60 80 100		0 20 40 60 80 100					
							ORGANICS	
					011	ML	SANDY SILT	
					012	SM	-Free water flowing into pit SILTY SAND and ICE -%50 Ice (Vx/Vc) Very hard END of HOLE -Refusal, hard ground and flowing water	
732								1
731								2



SUBSURFACE EXPLORATION AND TEST REPORT	Alaska Highway	SOURCE/TP#: 908-6557
Source Motors Ltd.	Pine Valley Exploration, km 1785.3 LHS	PROJECT NO: 552-202101-1001-01-1
Hitachi Ex200	Coordinates: Z07V N6853611m E547589m	ELEVATION: 733m

PHOTOS



Figure 908-6557.1
Photo of waste pile from test pit 908-6557

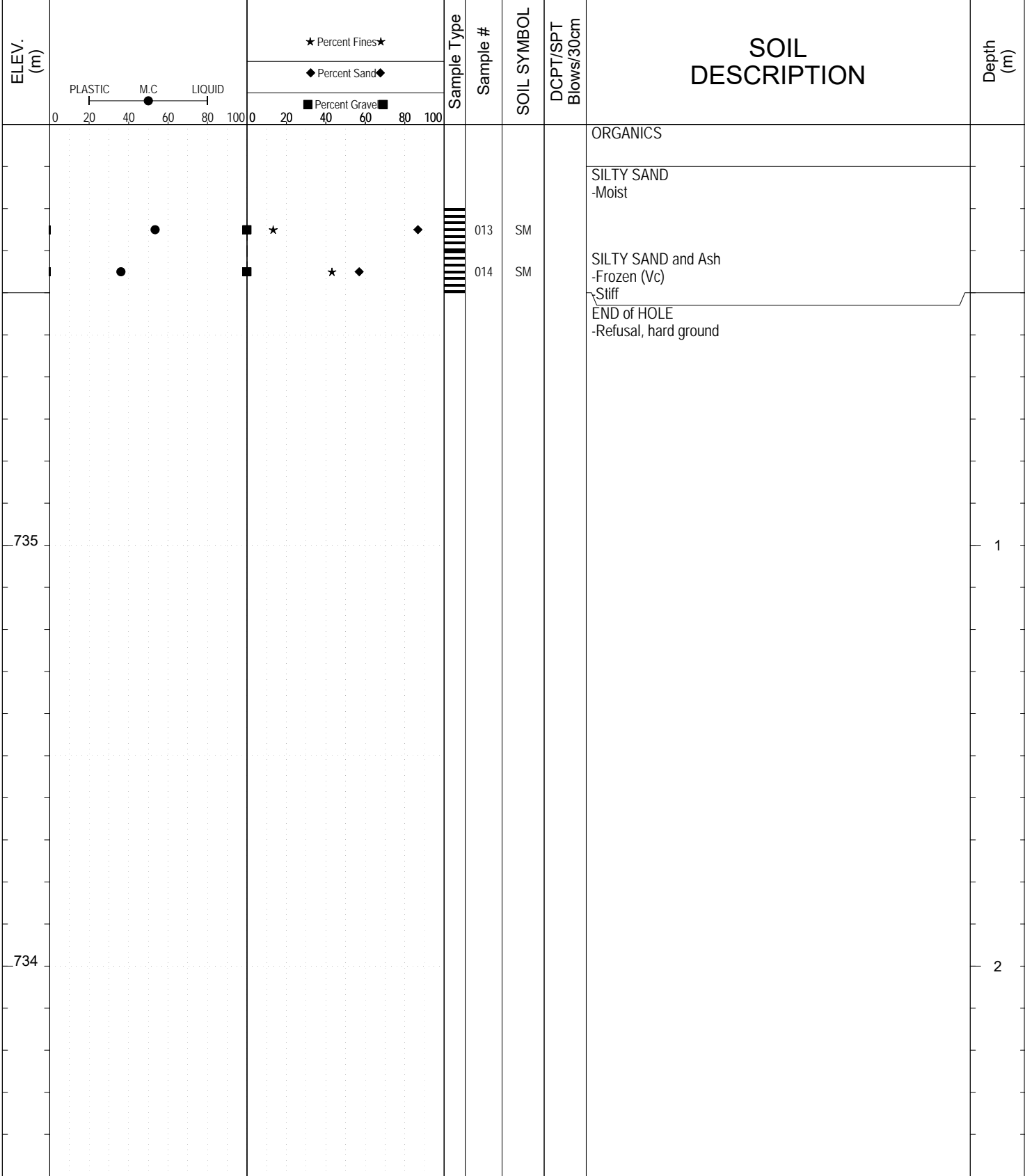


Figure 908-6557.2
Photo of test pit 908-6557



SUBSURFACE EXPLORATION AND TEST REPORT		Alaska Highway	SOURCE/TP#: 908-6558
Source Motors Ltd.		Pine Valley Exploration, km 1785.3 LHS	PROJECT NO: 552-202101-1001-01-1
Hitachi Ex200		Coordinates: Z07V N6853519m E547710m	ELEVATION: 736m

SAMPLE TYPE UNDISTURBED DCPT AUGER BULK SPT CORE



Highways and Public Works
Transportation Engineering Branch

LOGGED BY: K.Elmer	Termination Depth: 0.4m
COMPILED BY: R.Stilwell	Complete: 10/15/2016 4:00:00 PM
REVIEWED BY:	Pit #: 115F-02 Page 1 of 2

SUBSURFACE EXPLORATION AND TEST REPORT	Alaska Highway	SOURCE/TP#: 908-6558
Source Motors Ltd.	Pine Valley Exploration, km 1785.3 LHS	PROJECT NO: 552-202101-1001-01-1
Hitachi Ex200	Coordinates: Z07V N6853519m E547710m	ELEVATION: 736m

PHOTOS



Figure 908-6558.1
Photo of excavation from test pit 908-6558



Figure 908-6558.2
Photo of waste pile and test pit 908-6558

SUBSURFACE EXPLORATION AND TEST REPORT		Alaska Highway		SOURCE/TP#: 908-6559						
Source Motors Ltd.		Pine Valley Exploration, km 1785.3 LHS		PROJECT NO: 552-202101-1001-01-1						
Hitachi Ex200		Coordinates: Z07V N6853640m E547802m		ELEVATION: 733m						
SAMPLE TYPE		<input type="checkbox"/> UNDISTURBED		<input type="checkbox"/> DCPT						
		<input type="checkbox"/> AUGER		<input type="checkbox"/> BULK						
		<input checked="" type="checkbox"/> SPT		<input type="checkbox"/> CORE						
ELEV. (m)	PLASTIC M.C LIQUID 0 20 40 60 80 100		★ Percent Fines ★ ◆ Percent Sand ◆ ■ Percent Grave ■		Sample Type	Sample #	SOIL SYMBOL	DCPT/SPT Blows/30cm	SOIL DESCRIPTION	Depth (m)
	0 20 40 60 80 100		0 20 40 60 80 100							
									ORGANICS	
						015	SM		SILTY SAND -Moist	
						016	SM		ICE with SILTY SAND and Ash -Clear ice	
732									END of HOLE -Refusal, hard frozen	1
731										2



SUBSURFACE EXPLORATION AND TEST REPORT	Alaska Highway	SOURCE/TP#: 908-6559
Source Moters Ltd.	Pine Valley Exploration, km 1785.3 LHS	PROJECT NO: 552-202101-1001-01-1
Hitachi Ex200	Coordinates: Z07V N6853640m E547802m	ELEVATION: 733m

PHOTOS



Figure 908-6559.1
Photo of waste pile and test pit 908-6559



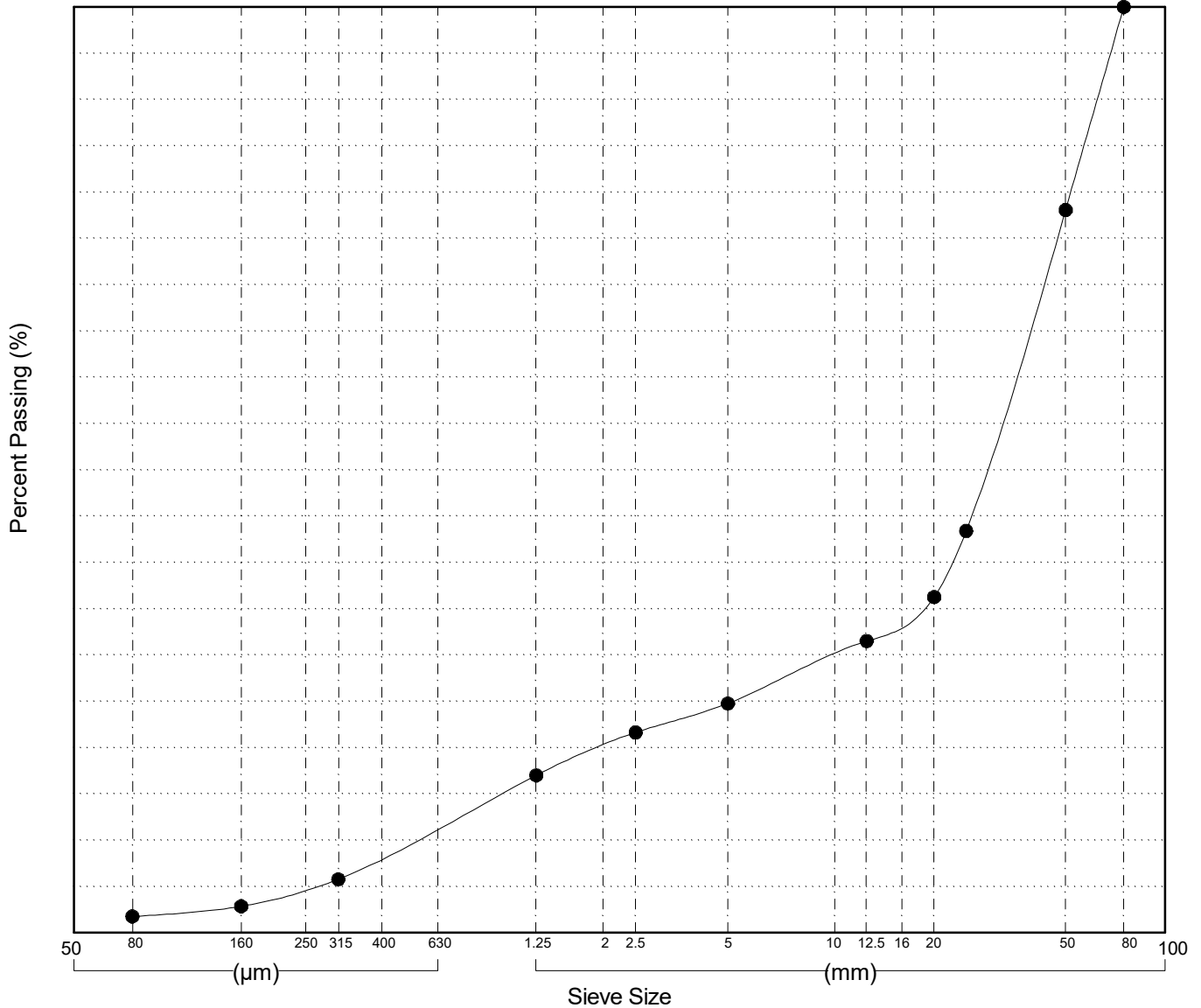
Figure 908-6559.2
Photo of ice from test pit 908-6559

GRAIN SIZE ANALYSIS	Pine Valley Exploration	SOURCE/TP#: 908-6551
Source Motors Ltd.	km 1785.3 LHS	PROJECT NO: 552-202101-1001-01-1
Hitachi Ex200	Coordinates: Z07V N6854281m E548135m	ELEVATION: 733m

Master Revised July 2013

Field#	Lab#	Depth	Classification	%H2O	LL	PL	PI	Cc	Cu										
001	497	1.0 to 1.4	POORLY GRADED GRAVEL with SAND(GP)	0.7	NP	NP	NP	5.5	65.9										
Field#	Lab#	100.0	80.0	50.0	25.0	20.0	12.5	10.0	5.0	2.5	1.25	0.630	0.315	0.160	0.080	%Breakdown			
001	497	100.0	100.0	78.1	43.4	36.3	31.5	30.0	24.8	21.6	17.0	11.4	5.8	2.9	1.8	Gravel	Sand	Silt	Clay
		% PASSING														75.2	23.0	1.8	

Silt	Sand			Gravel	
	Fine	Medium	Coarse	Fine	Coarse



Highways and Public Works
Transportation Engineering Branch

LOGGED BY: K.Elmer
COMPILED BY: R.Stilwell
REVIEWED BY:

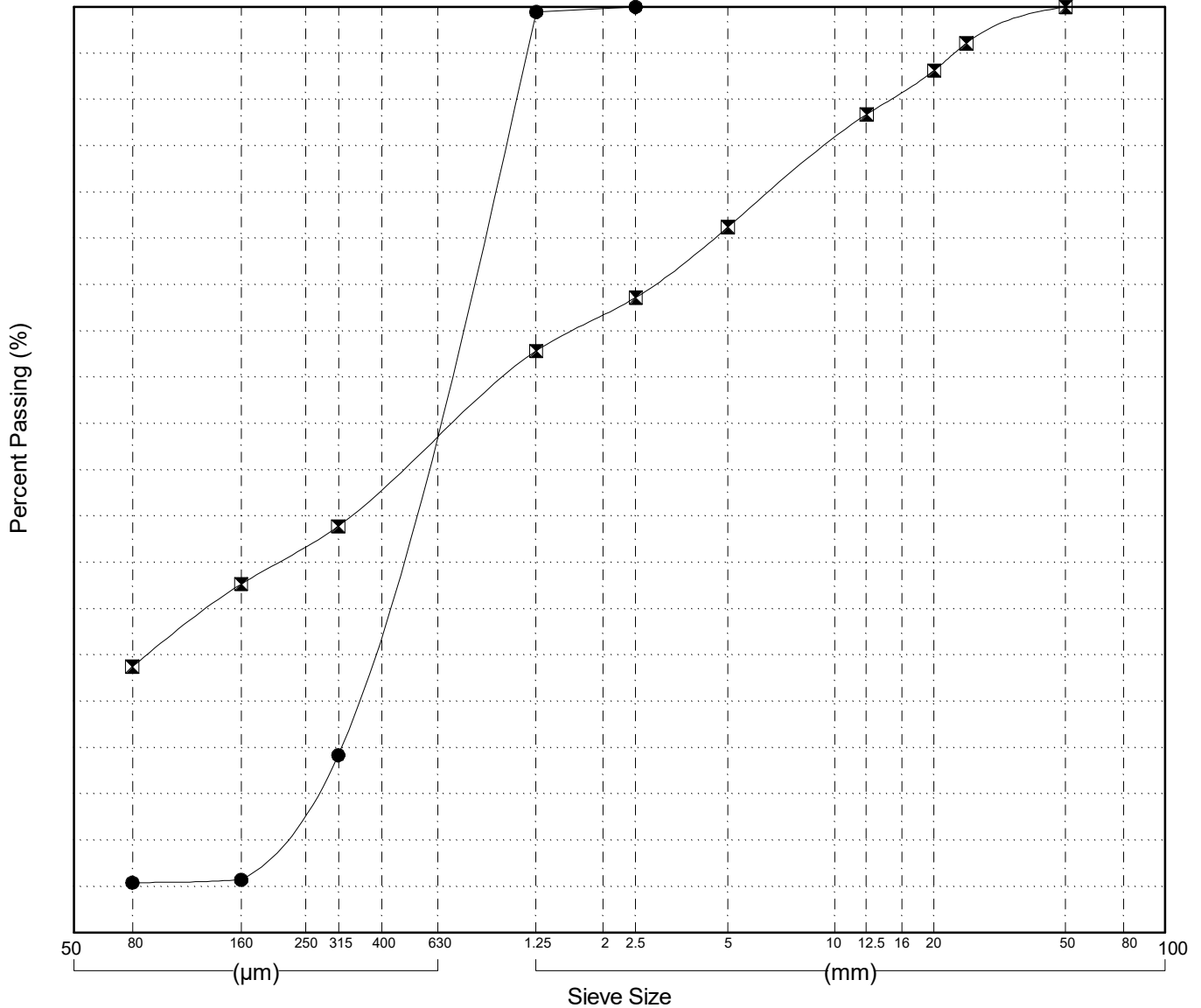
Pit # 115F-02
Complete: 10/15/2016 11:30:00 AM
Page 1 of 1

GRAIN SIZE ANALYSIS	Pine Valley Exploration	SOURCE/TP#: 908-6552
Source Motors Ltd.	km 1785.3 LHS	PROJECT NO: 552-202101-1001-01-1
Hitachi Ex200	Coordinates: Z07V N6853822m E547945m	ELEVATION: 732m

Master Revised July 2013

Field#	Lab#	Depth	Classification	%H2O	LL	PL	PI	Cc	Cu											
● 002	498	0.2 to 0.4	POORLY GRADED SAND with SILT(SP-SM)	45.9	NP	NP	NP	1.1	3.2											
☒ 003	499	1.3 to 1.5	SILTY SAND with GRAVEL(SM)	25.2	NP	NP	NP													
Field#	Lab#	100.0	80.0	50.0	25.0	20.0	12.5	10.0	5.0	2.5	1.25	0.630	0.315	0.160	0.080	% Breakdown				
● 002	498	100.0	100.0	100.0	100.0	100.0	100.0	100.0	100.0	100.0	99.5	59.6	19.2	5.7	5.4	Gravel	Sand	Silt	Clay	
☒ 003	499	100.0	100.0	100.0	96.1	93.1	88.4	85.6	76.2	68.6	62.8	53.4	43.9	37.7	28.8	23.8	47.5	28.8		

Silt	Sand			Gravel	
	Fine	Medium	Coarse	Fine	Coarse



Highways and Public Works
Transportation Engineering Branch

LOGGED BY: K.Elmer
COMPILED BY: R.Stilwell
REVIEWED BY:

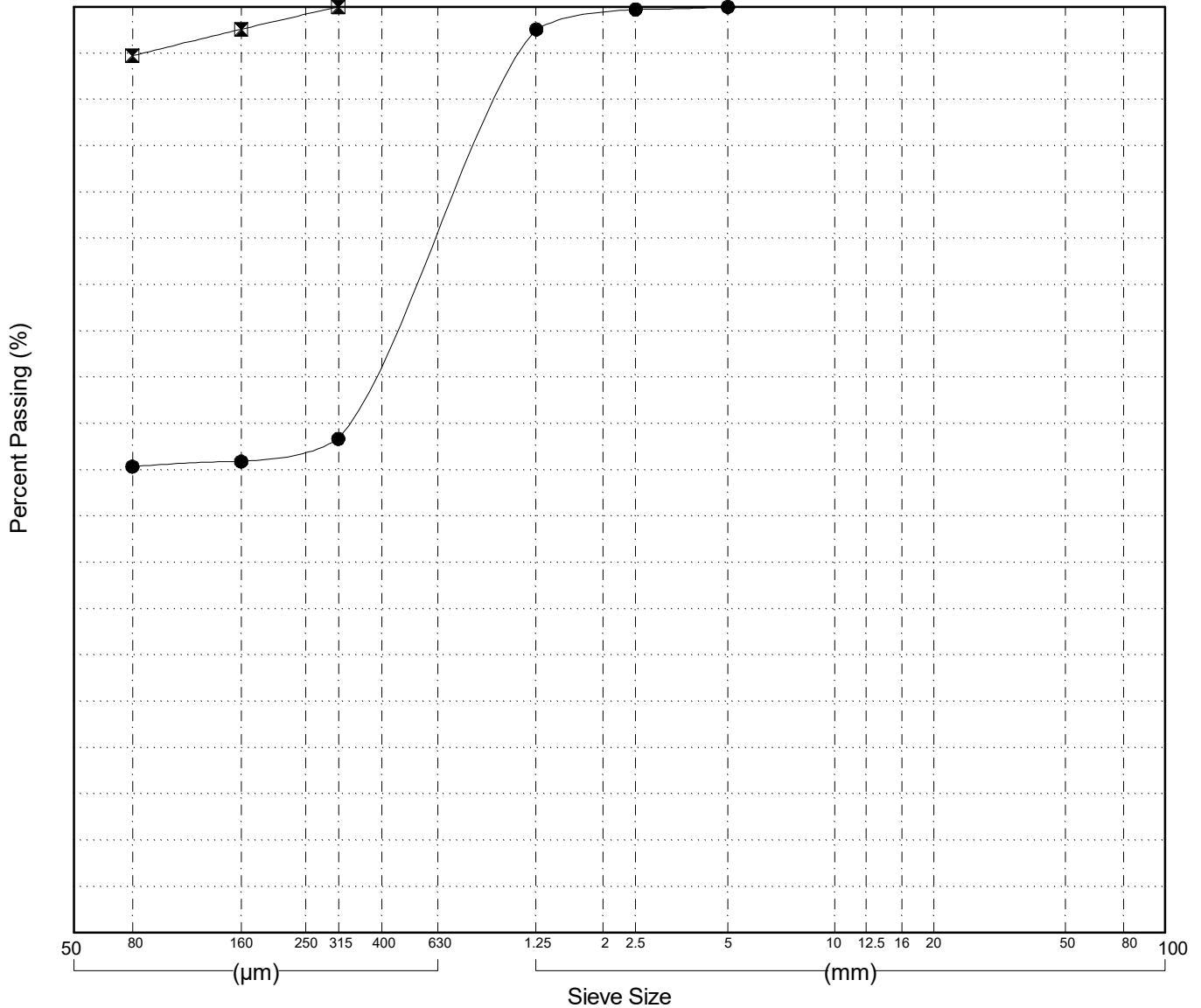
Pit # 115F-02
Complete: 10/15/2016 11:45:00 AM
Page 1 of 1

GRAIN SIZE ANALYSIS	Pine Valley Exploration	SOURCE/TP#: 908-6553
Source Motors Ltd.	km 1785.3 LHS	PROJECT NO: 552-202101-1001-01-1
Hitachi Ex200	Coordinates: Z07V N6854388m E547806m	ELEVATION: 726m

Master Revised July 2013

Field#	Lab#	Depth	Classification											%H2O	LL	PL	PI	Cc	Cu	
● 004	500	0.4 to 0.5	SANDY SILT (ML)											43.0	NP	NP	NP			
☒ 005	501	1.0 to 1.4	SILT (ML)											67.2	NP	NP	NP			
Field#	Lab#		100.0	80.0	50.0	25.0	20.0	12.5	10.0	5.0	2.5	1.25	0.630	0.315	0.160	0.080	% Breakdown			
● 004	500	% PASSING	100.0	100.0	100.0	100.0	100.0	100.0	100.0	100.0	99.7	97.6	75.6	53.3	50.9	50.4	0.0	49.6	50.4	
☒ 005	501		100.0	100.0	100.0	100.0	100.0	100.0	100.0	100.0	100.0	100.0	100.0	100.0	97.6	94.7	0.0	5.3	94.7	

Silt	Sand			Gravel	
	Fine	Medium	Coarse	Fine	Coarse



Highways and Public Works
Transportation Engineering Branch

LOGGED BY: K.Elmer
COMPILED BY: R.Stilwell
REVIEWED BY:

Pit # 115F-02
Complete: 10/15/2016 12:30:00 PM
Page 1 of 1

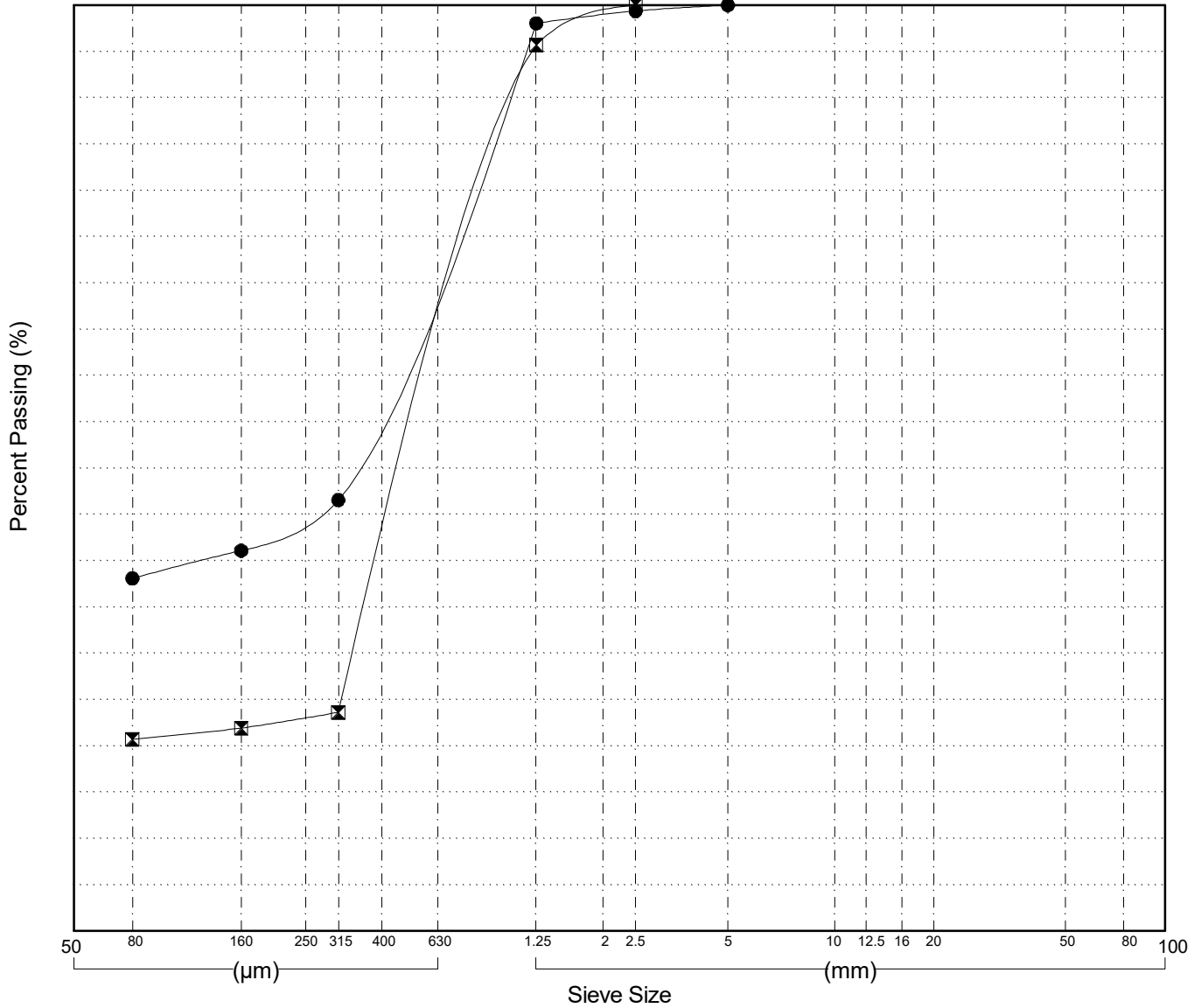
GRAIN SIZE ANALYSIS	Pine Valley Exploration	SOURCE/TP#: 908-6554
Source Motors Ltd.	km 1785.3 LHS	PROJECT NO: 552-202101-1001-01-1
Hitachi Ex200	Coordinates: Z07V N6854268m E547717m	ELEVATION: 725m

Master Revised July 2013

Field#	Lab#	Depth	Classification	%H ₂ O	LL	PL	PI	C _c	C _u
● 006	502	0.2 to 0.4	SILTY SAND(SM)	52.4	NP	NP	NP		
☒ 007	503	0.4 to 0.5	SILTY SAND(SM)	97.1	NP	NP	NP		
Field#	Lab#								
● 006	502								
☒ 007	503								

Field#	Lab#	% PASSING															% Breakdown			
			100.0	80.0	50.0	25.0	20.0	12.5	10.0	5.0	2.5	1.25	0.630	0.315	0.160	0.080	Gravel	Sand	Silt	Clay
● 006	502	100.0	100.0	100.0	100.0	100.0	100.0	100.0	100.0	99.4	98.0	72.4	46.6	41.1	38.1	0.0	61.9	38.1		
☒ 007	503	100.0	100.0	100.0	100.0	100.0	100.0	100.0	100.0	100.0	95.7	59.9	23.6	21.9	20.7	0.0	79.3	20.7		

Silt	Sand			Gravel	
	Fine	Medium	Coarse	Fine	Coarse



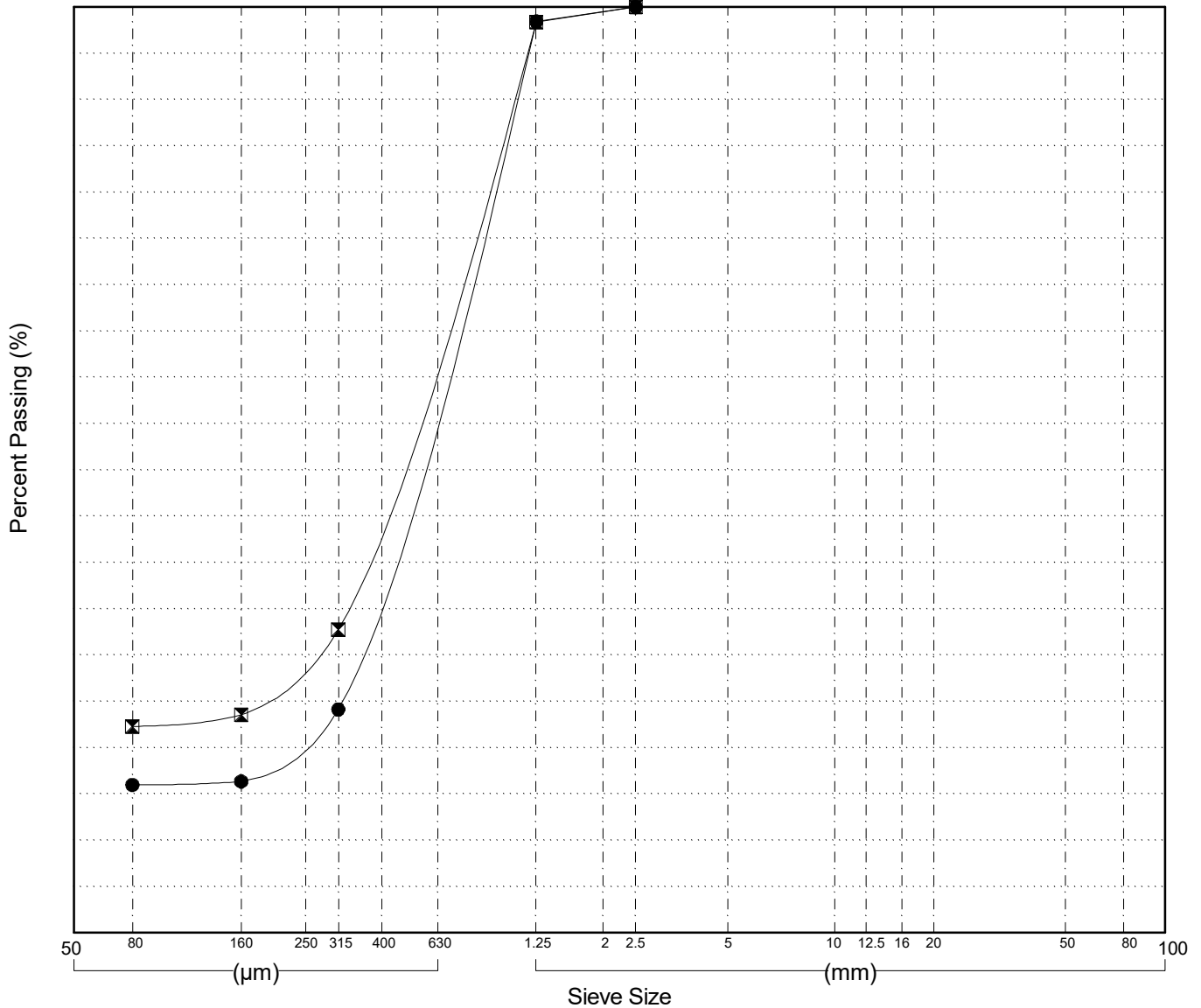
GRAIN SIZE ANALYSIS	Pine Valley Exploration	SOURCE/TP#: 908-6555
Source Motors Ltd.	km 1785.3 LHS	PROJECT NO: 552-202101-1001-01-1
Hitachi Ex200	Coordinates: Z07V N6854179m E547836m	ELEVATION: 728m

Master Revised July 2013

Field#	Lab#	Depth	Classification	%H ₂ O	LL	PL	PI	C _c	C _u
● 008	504	0.2 to 0.4	SILTY SAND(SM)	34.3	NP	NP	NP		
☒ 009	505	0.4 to 0.5	SILTY SAND(SM)	66.5	NP	NP	NP		
Field#	Lab#								
● 008	504								
☒ 009	505								

Field#	Lab#	% PASSING	100.0	80.0	50.0	25.0	20.0	12.5	10.0	5.0	2.5	1.25	0.630	0.315	0.160	0.080	% Breakdown			
			Gravel	Sand	Silt	Clay														
● 008	504	100.0	100.0	100.0	100.0	100.0	100.0	100.0	100.0	100.0	100.0	98.4	61.5	24.1	16.4	16.0	0.0	84.0	16.0	
☒ 009	505	100.0	100.0	100.0	100.0	100.0	100.0	100.0	100.0	100.0	100.0	98.4	65.7	32.7	23.6	22.3	0.0	77.7	22.3	

Silt	Sand			Gravel	
	Fine	Medium	Coarse	Fine	Coarse



Highways and Public Works
Transportation Engineering Branch

LOGGED BY: K.Elmer
COMPILED BY: R.Stilwell
REVIEWED BY:

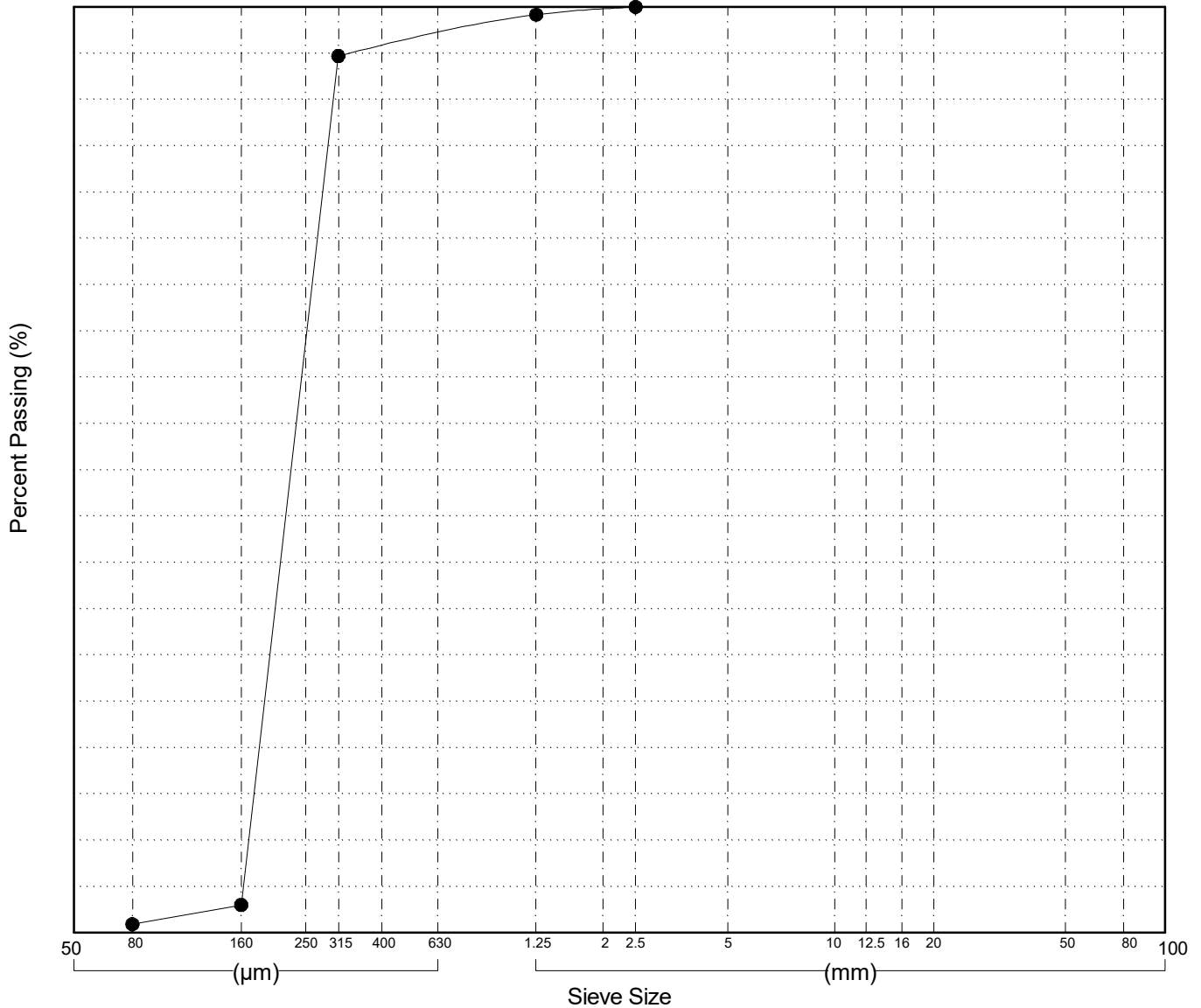
Pit # 115F-02
Complete: 10/15/2016 1:10:00 PM

GRAIN SIZE ANALYSIS	Pine Valley Exploration	SOURCE/TP#: 908-6556
Source Motors Ltd.	km 1785.3 LHS	PROJECT NO: 552-202101-1001-01-1
Hitachi Ex200	Coordinates: Z07V N6853729m E547682m	ELEVATION: 733m

Master Revised July 2013

Field#	Lab#	Depth	Classification	%H2O	LL	PL	PI	Cc	Cu										
● 010	506	0.2 to 0.3	POORLY GRADED SAND(SP)	8.5	NP	NP	NP	0.9	1.4										
Field#	Lab#	100.0	80.0	50.0	25.0	20.0	12.5	10.0	5.0	2.5	1.25	0.630	0.315	0.160	0.080	%Breakdown			
● 010	506	100.0	100.0	100.0	100.0	100.0	100.0	100.0	100.0	100.0	99.2	96.9	94.7	3.0	0.9	Gravel	Sand	Silt	Clay
																0.0	99.1		0.9

Silt	Sand			Gravel	
	Fine	Medium	Coarse	Fine	Coarse



Highways and Public Works
Transportation Engineering Branch

LOGGED BY: K.Elmer
COMPILED BY: R.Stilwell
REVIEWED BY:

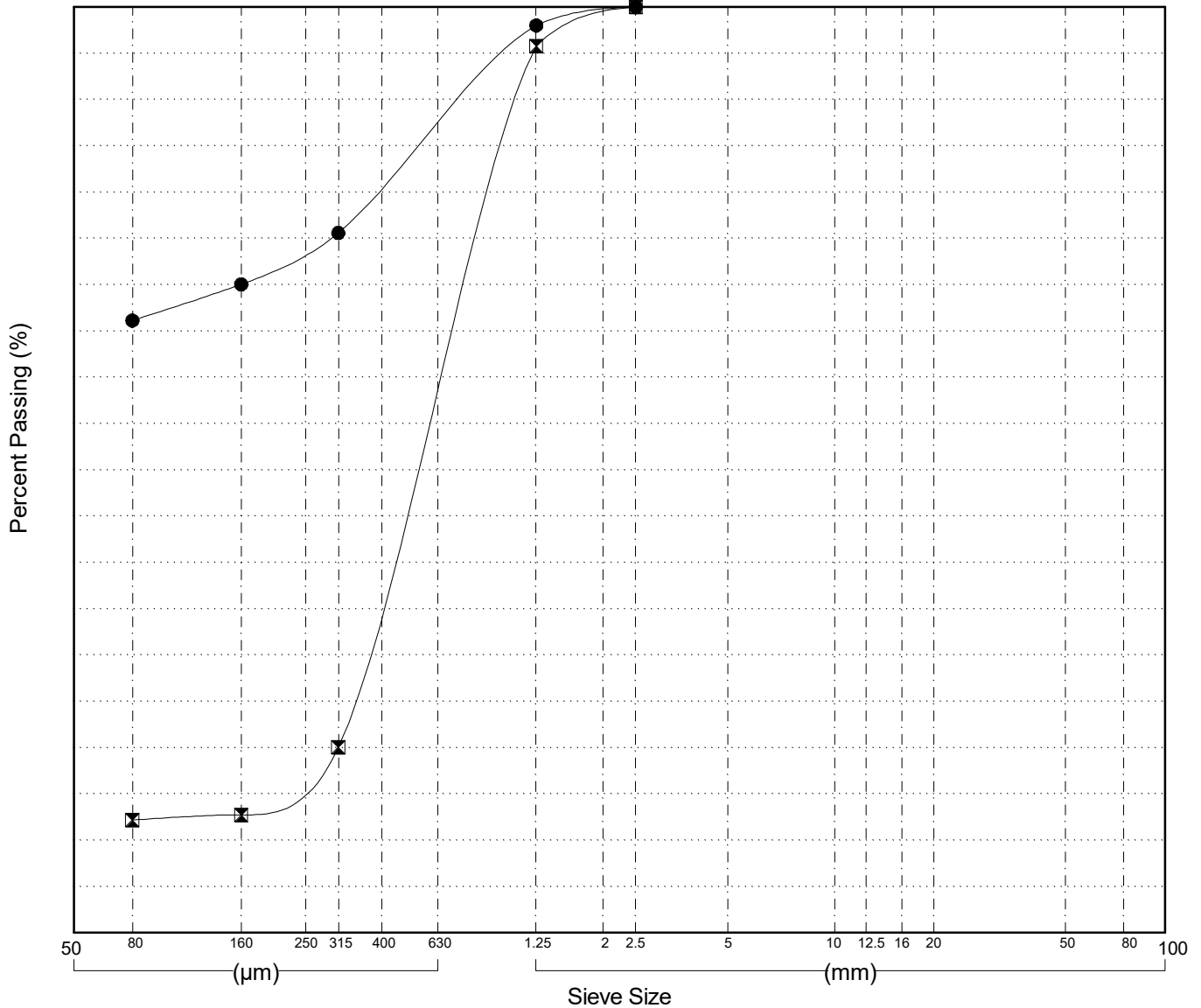
Pit # 115F-02
Complete: 10/15/2016 3:20:00 PM

GRAIN SIZE ANALYSIS	Pine Valley Exploration	SOURCE/TP#: 908-6557
Source Motors Ltd.	km 1785.3 LHS	PROJECT NO: 552-202101-1001-01-1
Hitachi Ex200	Coordinates: Z07V N6853611m E547589m	ELEVATION: 733m

Master Revised July 2013

Field#	Lab#	Depth	Classification	%H ₂ O	LL	PL	PI	C _c	C _u											
● 011	507	0.2 to 0.3	SANDY SILT (ML)	156.5	NP	NP	NP													
☒ 012	508	0.3 to 0.4	SILTY SAND (SM)	48.8	NP	NP	NP	52.8	157.3											
Field#	Lab#	100.0	80.0	50.0	25.0	20.0	12.5	10.0	5.0	2.5	1.25	0.630	0.315	0.160	0.080	% Breakdown				
																Gravel	Sand	Silt	Clay	
● 011	507	100.0	100.0	100.0	100.0	100.0	100.0	100.0	100.0	100.0	98.0	86.9	75.6	70.0	66.1	0.0	33.9	66.1		
☒ 012	508	100.0	100.0	100.0	100.0	100.0	100.0	100.0	100.0	100.0	95.8	58.1	20.0	12.7	12.2	0.0	87.8	12.2		

Silt	Sand			Gravel	
	Fine	Medium	Coarse	Fine	Coarse



Highways and Public Works
Transportation Engineering Branch

LOGGED BY: K.Elmer
COMPILED BY: R.Stilwell
REVIEWED BY:

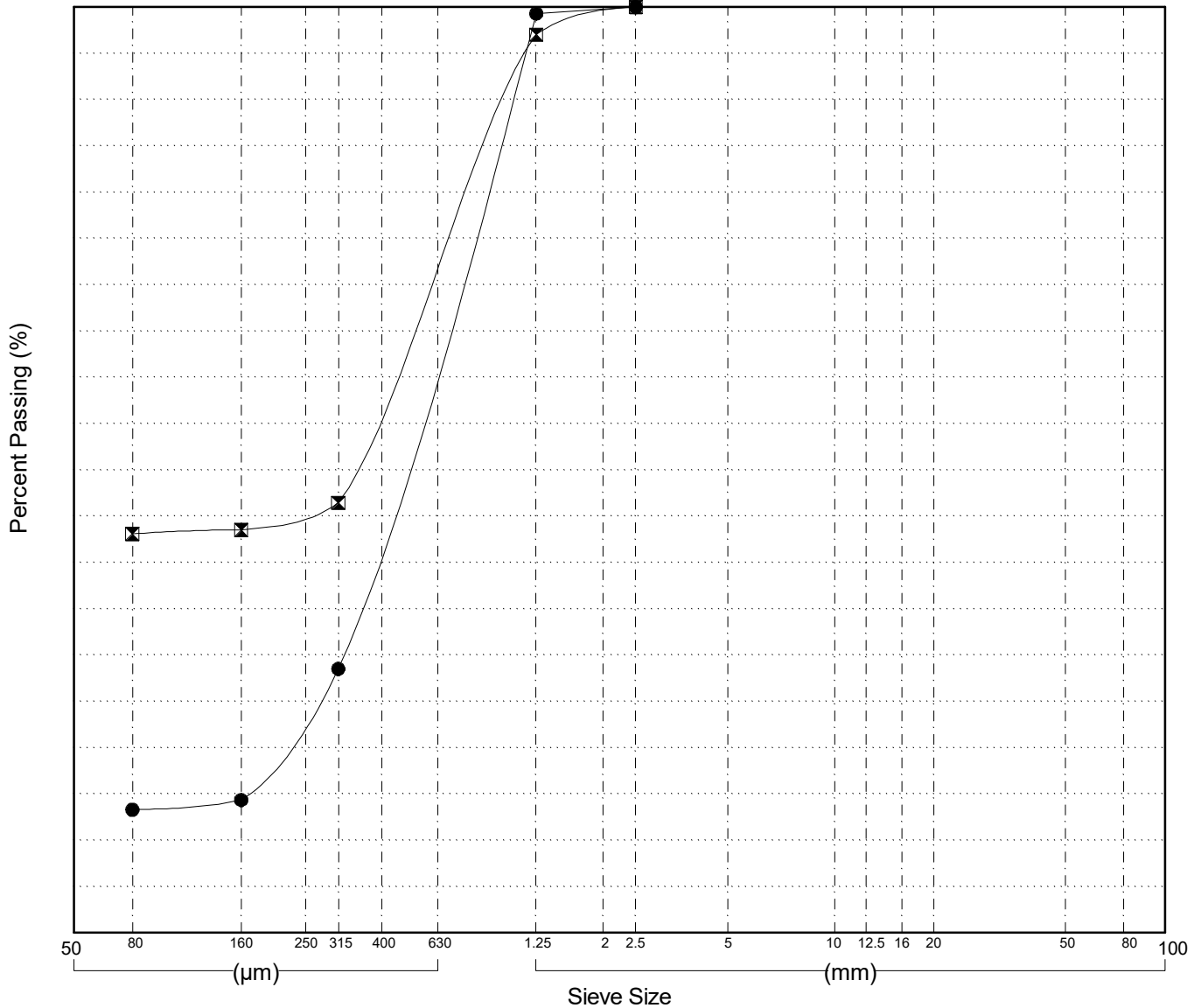
Pit # 115F-02
Complete: 10/15/2016 3:45:00 PM

GRAIN SIZE ANALYSIS	Pine Valley Exploration	SOURCE/TP#: 908-6558
Source Motors Ltd.	km 1785.3 LHS	PROJECT NO: 552-202101-1001-01-1
Hitachi Ex200	Coordinates: Z07V N6853519m E547710m	ELEVATION: 736m

Master Revised July 2013

Field#	Lab#	Depth	Classification	%H ₂ O	LL	PL	PI	C _c	C _u										
● 013	508	0.2 to 0.3	SILTY SAND(SM)	53.4	NP	NP	NP												
☒ 014	510	0.3 to 0.4	SILTY SAND(SM)	36.1	NP	NP	NP												
Field#	Lab#	100.0	80.0	50.0	25.0	20.0	12.5	10.0	5.0	2.5	1.25	0.630	0.315	0.160	0.080	% Breakdown			
		% PASSING														Gravel	Sand	Silt	Clay
● 013	508	100.0	100.0	100.0	100.0	100.0	100.0	100.0	100.0	100.0	99.3	64.1	28.5	14.4	13.3	0.0	86.7	13.3	
☒ 014	510	100.0	100.0	100.0	100.0	100.0	100.0	100.0	100.0	100.0	97.0	71.9	46.5	43.5	43.1	0.0	56.9	43.1	

Silt	Sand			Gravel	
	Fine	Medium	Coarse	Fine	Coarse

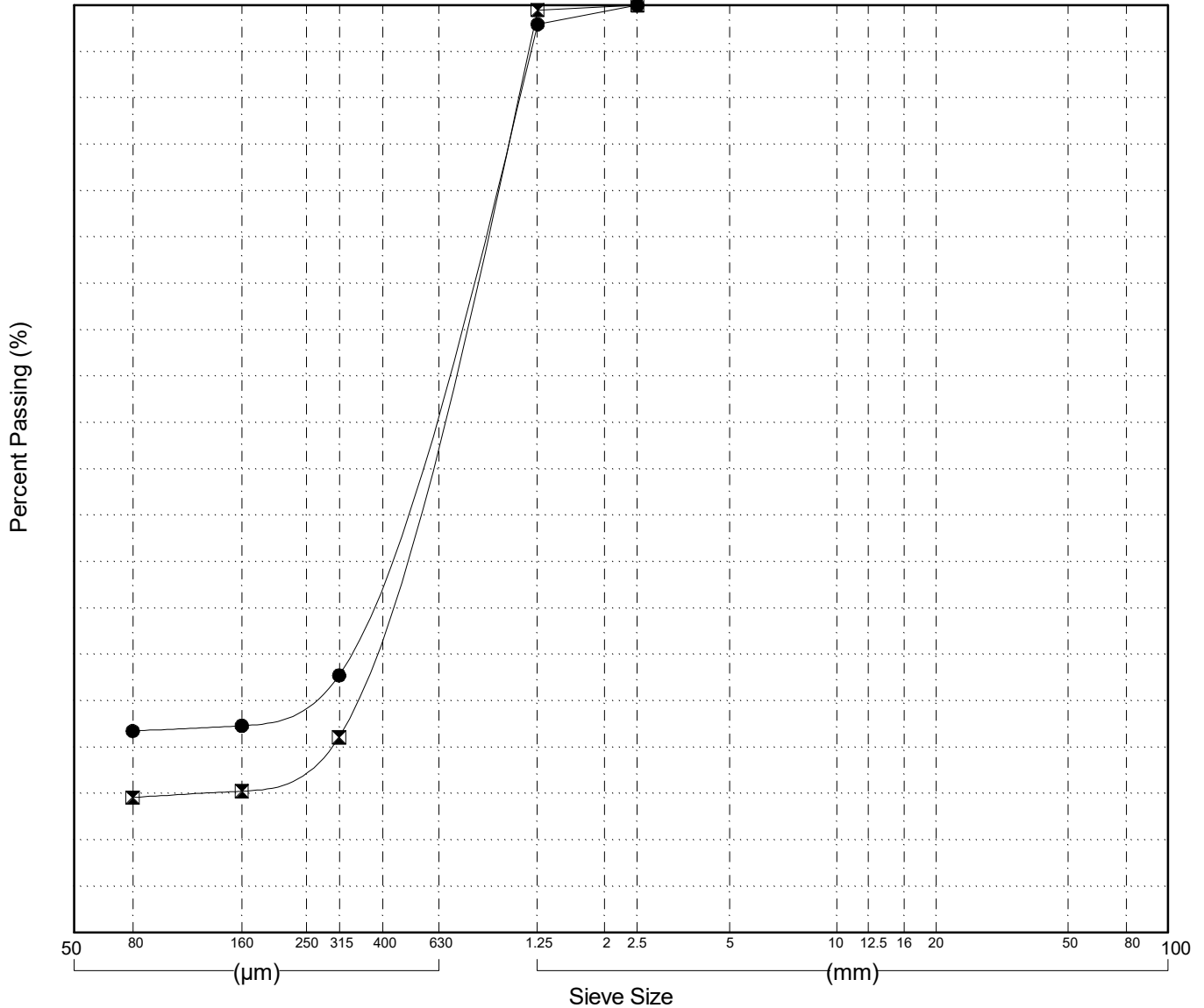


GRAIN SIZE ANALYSIS	Pine Valley Exploration	SOURCE/TP#: 908-6559
Source Motors Ltd.	km 1785.3 LHS	PROJECT NO: 552-202101-1001-01-1
Hitachi Ex200	Coordinates: Z07V N6853640m E547802m	ELEVATION: 733m

Master Revised July 2013

Field#	Lab#	Depth	Classification	%H2O	LL	PL	PI	Cc	Cu											
● 015	511	0.2 to 0.3	SILTY SAND(SM)	61.3	NP	NP	NP													
☒ 016	512	0.4 to 0.4	SILTY SAND(SM)	28.6	NP	NP	NP													
Field#	Lab#	100.0	80.0	50.0	25.0	20.0	12.5	10.0	5.0	2.5	1.25	0.630	0.315	0.160	0.080	% Breakdown				
																Gravel	Sand	Silt	Clay	
● 015	511	100.0	100.0	100.0	100.0	100.0	100.0	100.0	100.0	100.0	97.9	63.0	27.7	22.3	21.7	0.0	78.3	21.7		
☒ 016	512	100.0	100.0	100.0	100.0	100.0	100.0	100.0	100.0	100.0	99.5	60.5	21.1	15.3	14.6	0.0	85.4	14.6		

Silt	Sand			Gravel	
	Fine	Medium	Coarse	Fine	Coarse



Highways and Public Works
Transportation Engineering Branch

LOGGED BY: K.Elmer
COMPILED BY: R.Stilwell
REVIEWED BY:

Pit # 115F-02
Complete: 10/15/2016 4:20:00 PM