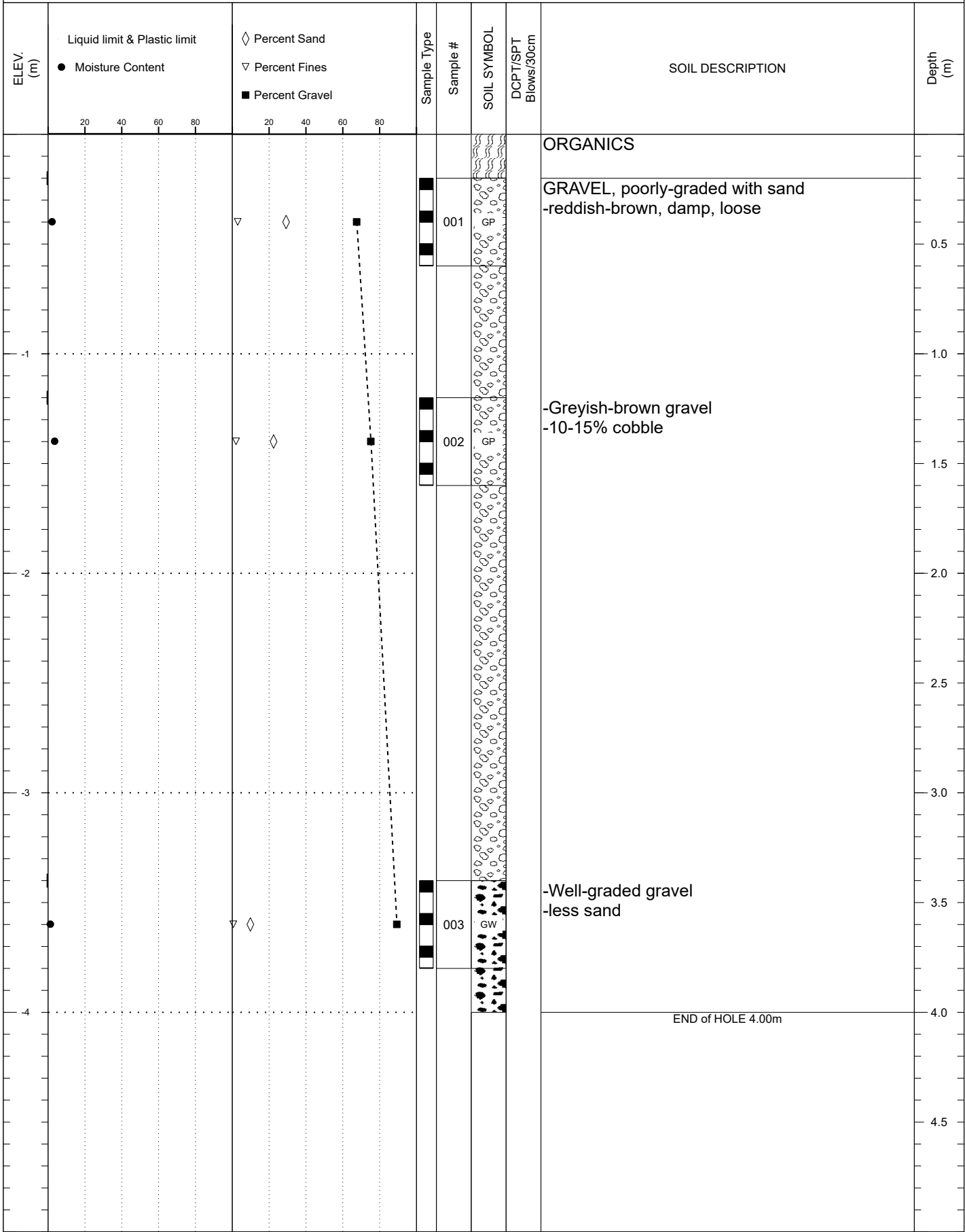


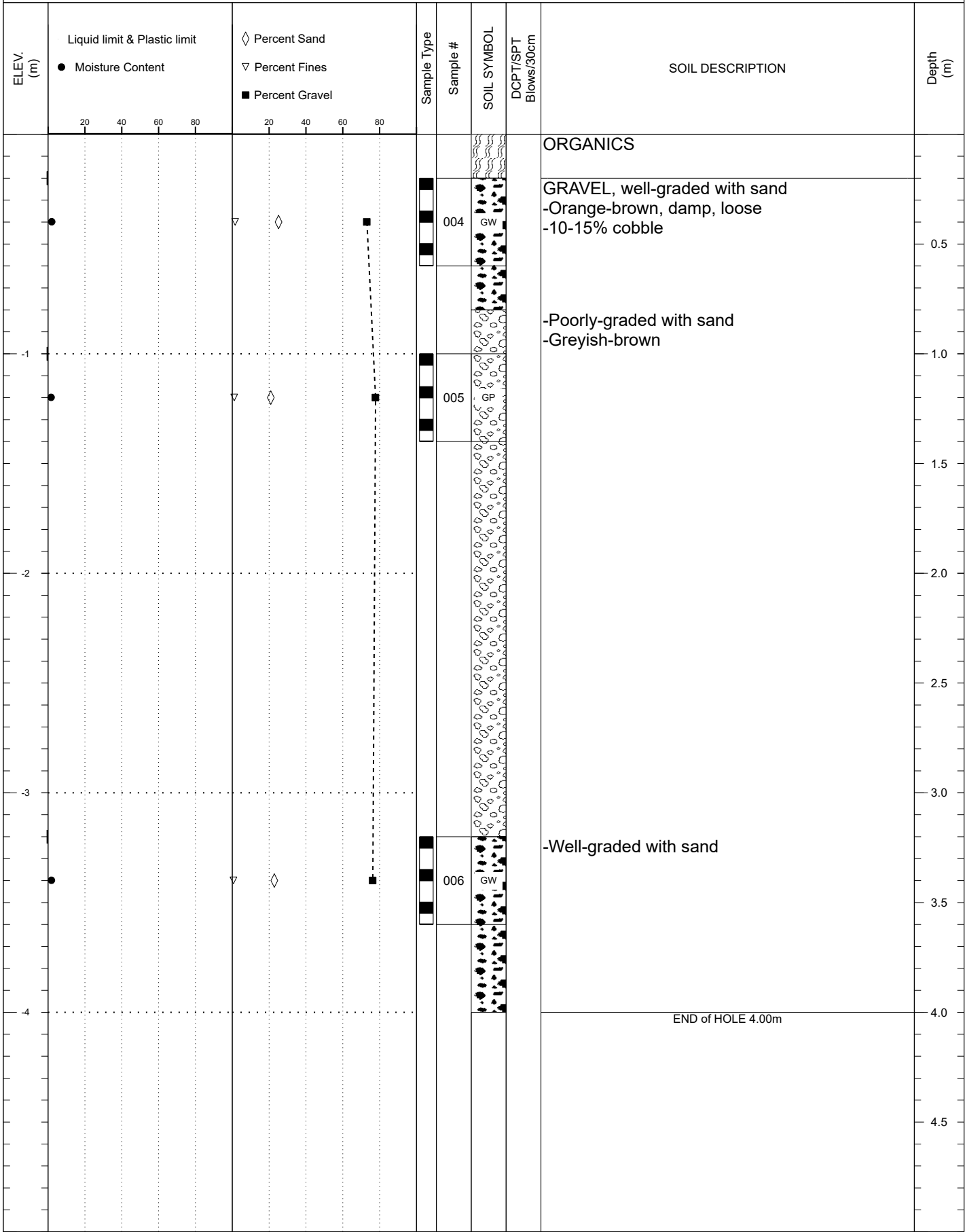
SUBSURFACE EXPLORATION AND TEST REPORT	02 Klondike Highway Pits	SOURCE/TP#: 913-5812
CLIENT: Transportation Engineering	Km 576.3 Rt - Hagars Camp	PROJECT NO: 115 P-09
EQUIPMENT: CAT 320CL	Coordinates: 8N N7048138.0m E383943.0m	

SAMPLE TYPE UNDISTURBED DCPT AUGER BULK SPT CORE



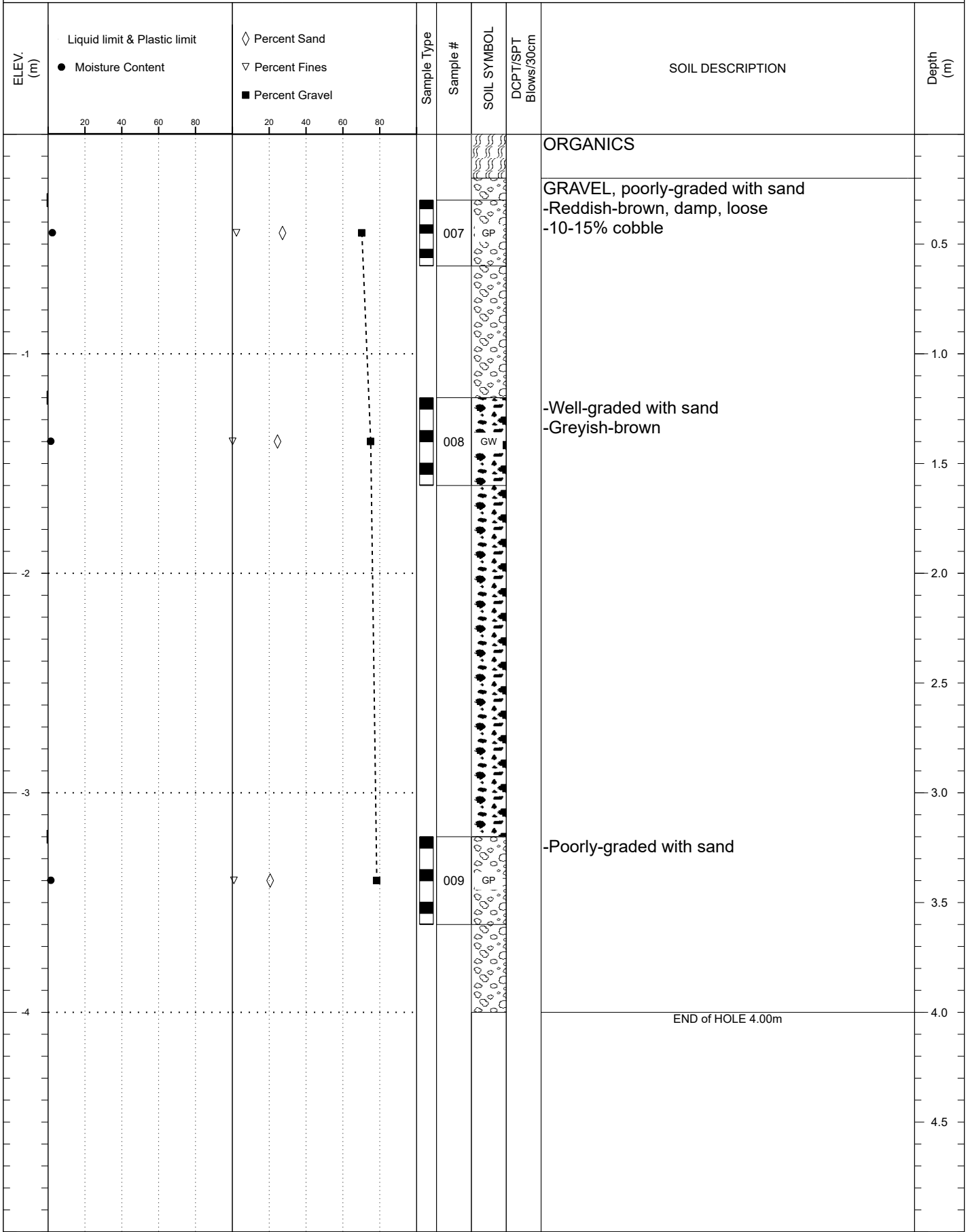
SUBSURFACE EXPLORATION AND TEST REPORT	02 Klondike Highway Pits	SOURCE/TP#: 913-5813
CLIENT: Transportation Engineering	Km 576.3 Rt - Hagars Camp	PROJECT NO: 115 P-09
EQUIPMENT: CAT 320CL	Coordinates: 8N N7048030.0m E384025.0m	

SAMPLE TYPE UNDISTURBED DCPT AUGER BULK SPT CORE



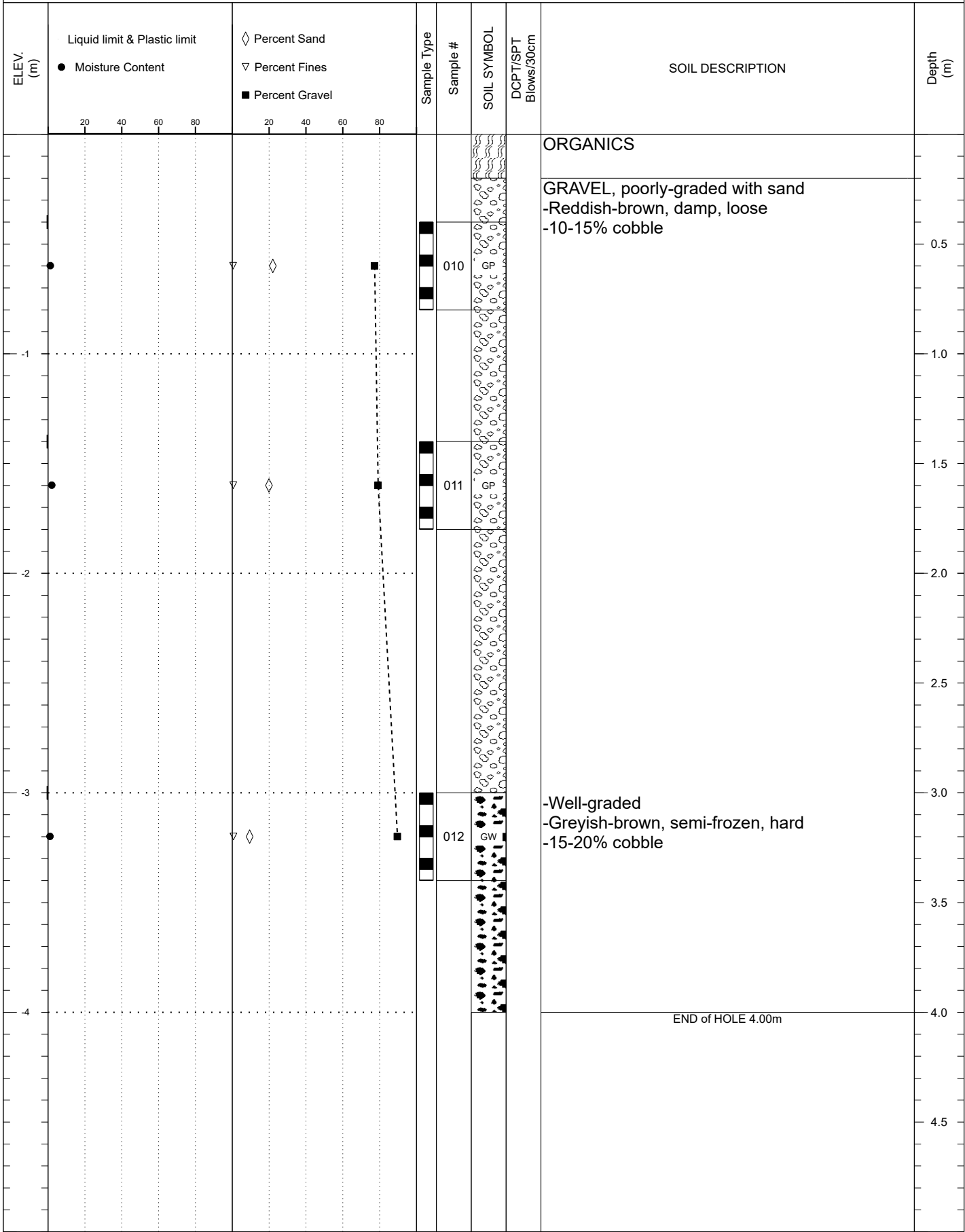
SUBSURFACE EXPLORATION AND TEST REPORT	02 Klondike Highway Pits	SOURCE/TP#: 913-5814
CLIENT: Transportation Engineering	Km 576.3 Rt - Hagars Camp	PROJECT NO: 115 P-09
EQUIPMENT: CAT 320CL	Coordinates: 8N N7048105.0m E384077.0m	

SAMPLE TYPE UNDISTURBED DCPT AUGER BULK SPT CORE



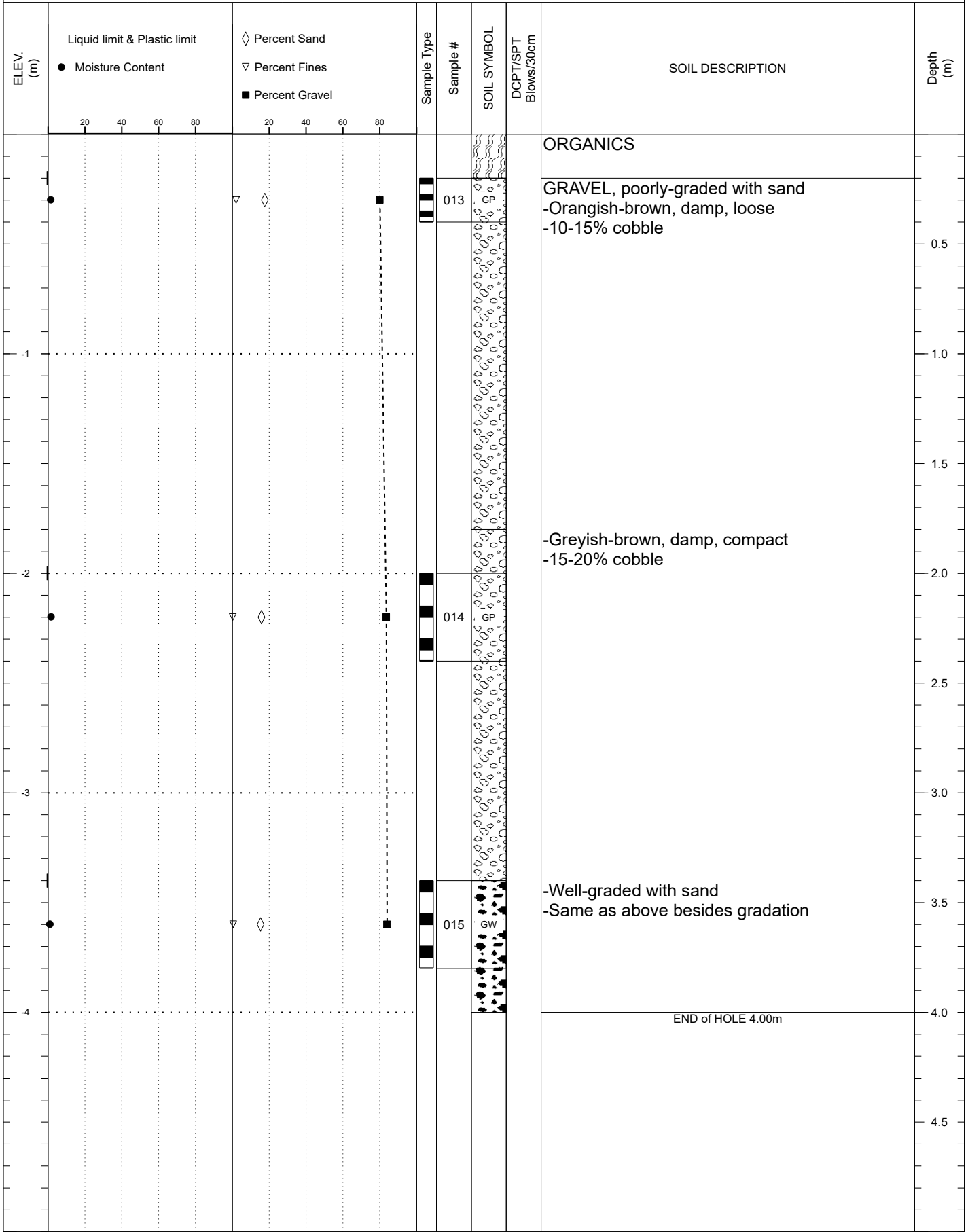
SUBSURFACE EXPLORATION AND TEST REPORT	02 Klondike Highway Pits	SOURCE/TP#: 913-5815
CLIENT: Transportation Engineering	Km 576.3 Rt - Hagars Camp	PROJECT NO: 115 P-09
EQUIPMENT: CAT 320CL	Coordinates: 8N N7048201.0m E384128.0m	

SAMPLE TYPE UNDISTURBED DCPT AUGER BULK SPT CORE



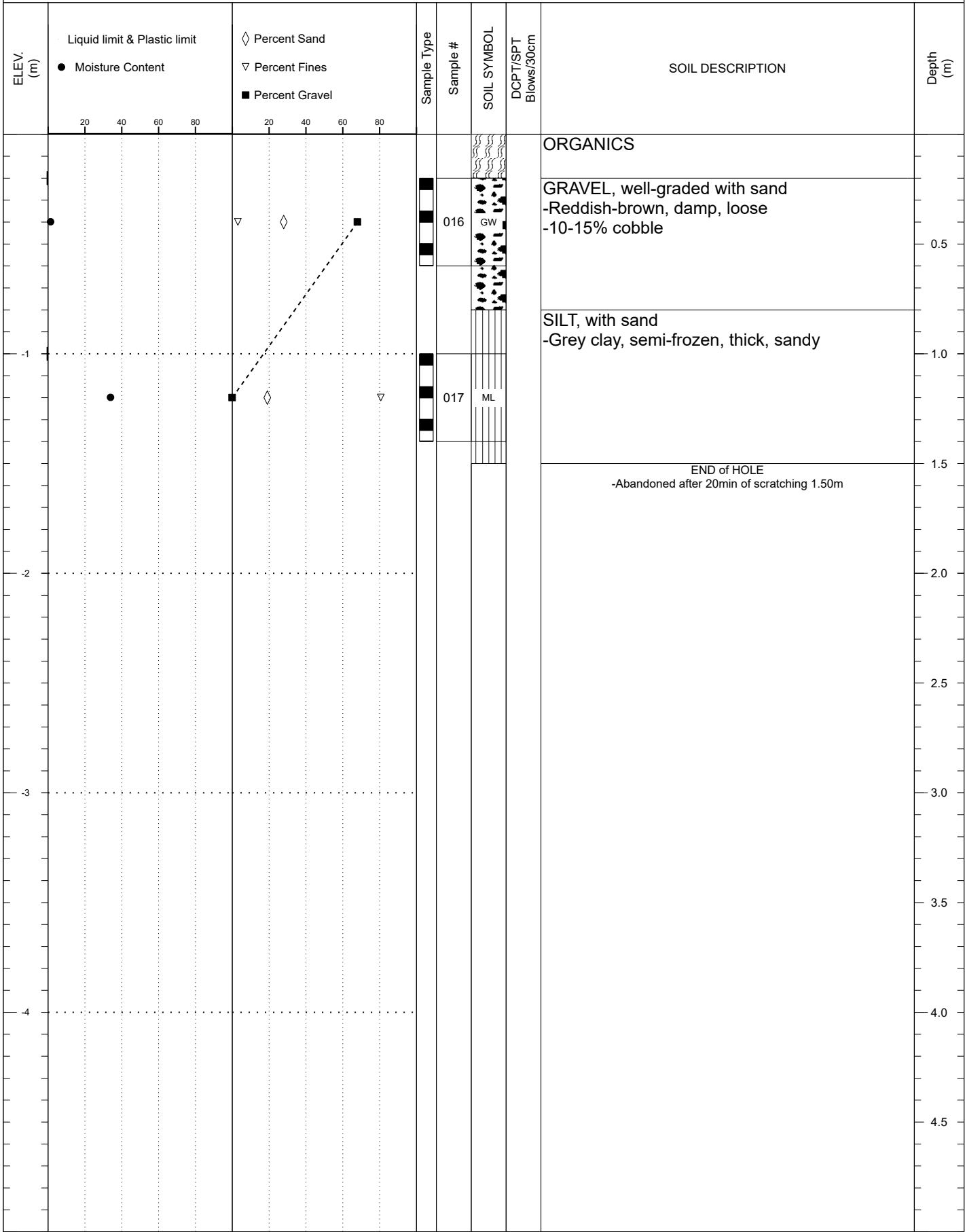
SUBSURFACE EXPLORATION AND TEST REPORT	02 Klondike Highway Pits	SOURCE/TP#: 913-5816
CLIENT: Transportation Engineering	Km 576.3 Rt - Hagars Camp	PROJECT NO: 115 P-09
EQUIPMENT: CAT 320CL	Coordinates: 8N N7048335.0m E384185.0m	

SAMPLE TYPE UNDISTURBED DCPT AUGER BULK SPT CORE



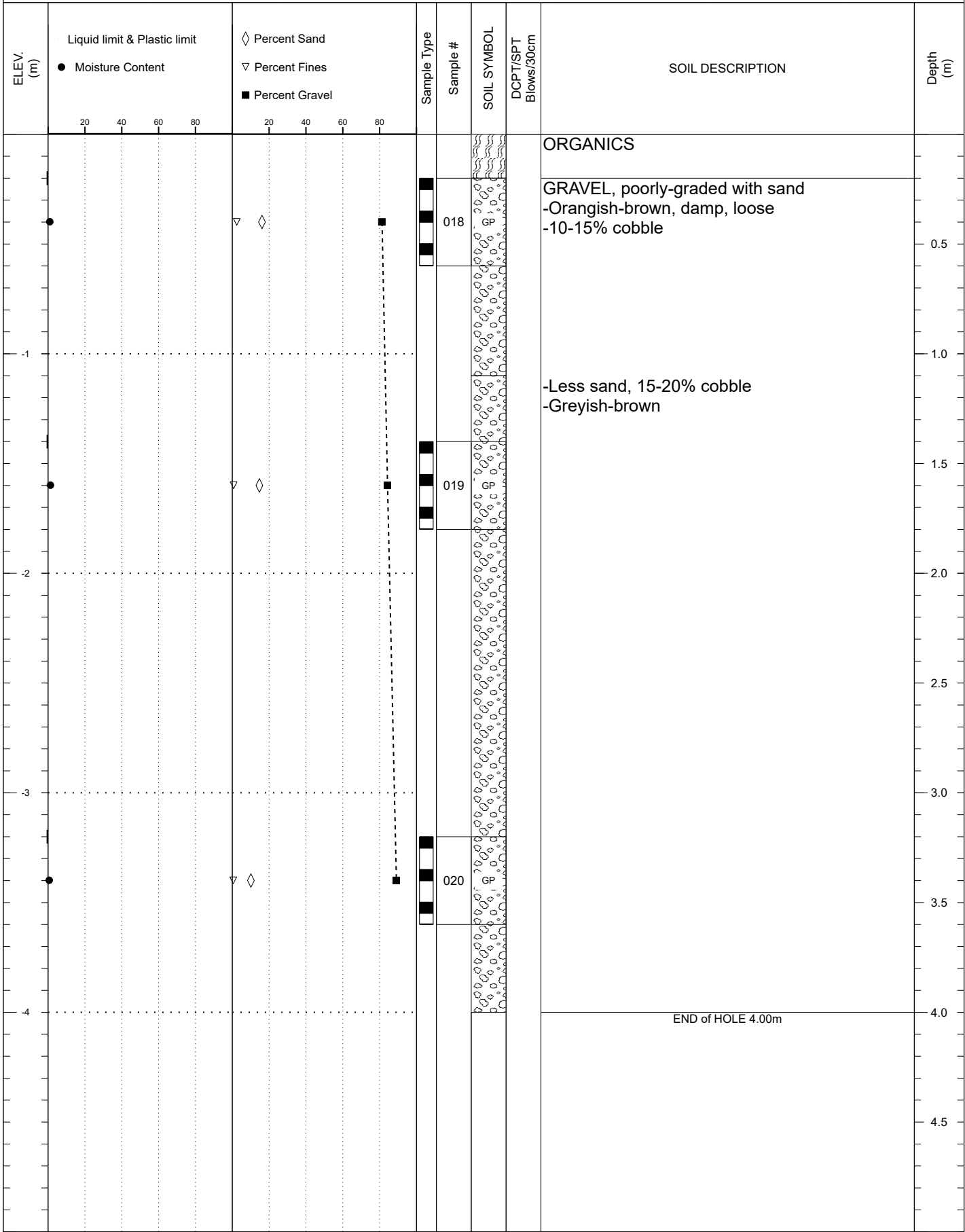
SUBSURFACE EXPLORATION AND TEST REPORT	02 Klondike Highway Pits	SOURCE/TP#: 913-5817
CLIENT: Transportation Engineering	Km 576.3 Rt - Hagars Camp	PROJECT NO: 115 P-09
EQUIPMENT: CAT 320CL	Coordinates: 8N N7048336.0m E384054.0m	

SAMPLE TYPE UNDISTURBED DCPT AUGER BULK SPT CORE



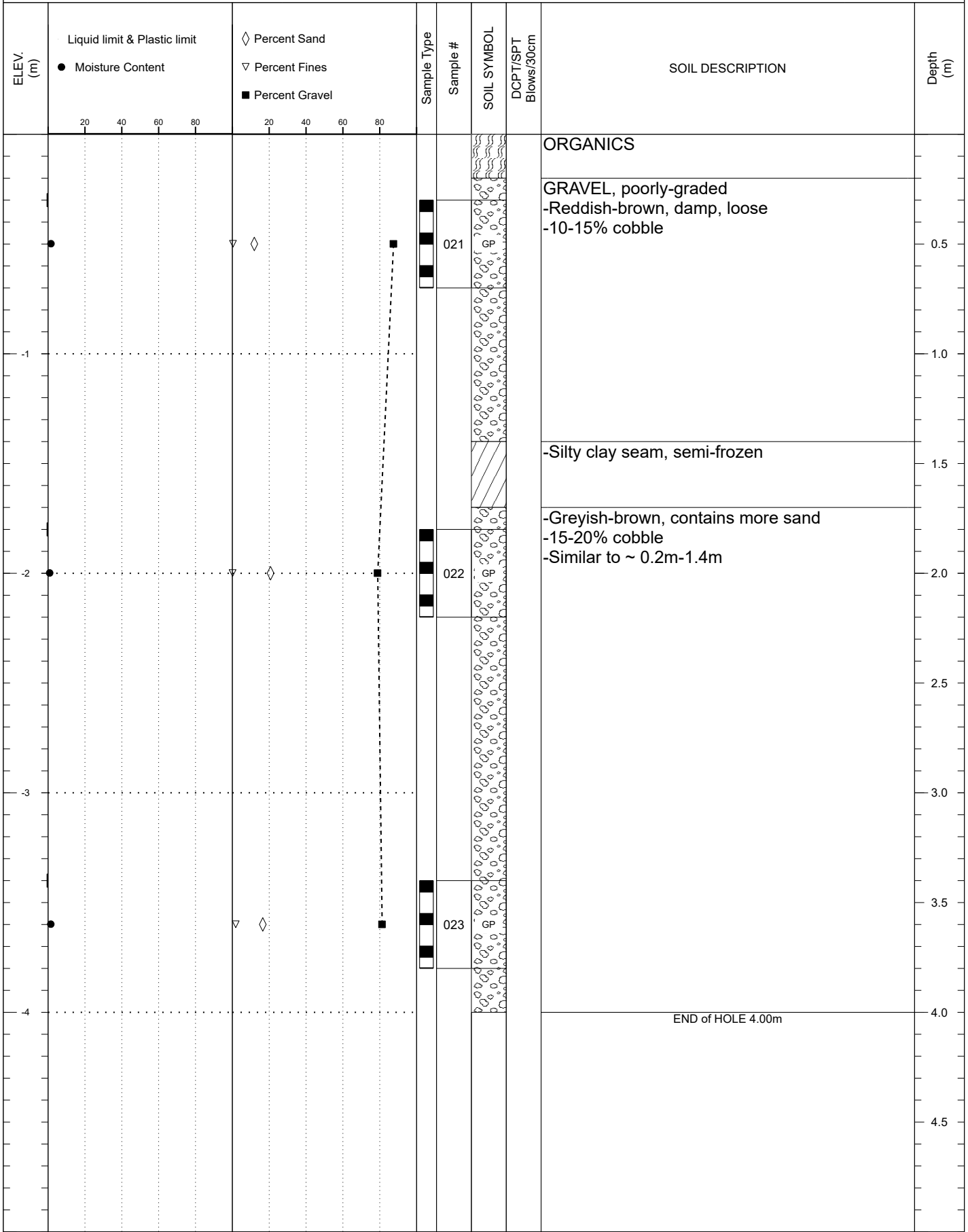
SUBSURFACE EXPLORATION AND TEST REPORT	02 Klondike Highway Pits	SOURCE/TP#: 913-5818
CLIENT: Transportation Engineering	Km 576.3 Rt - Hagars Camp	PROJECT NO: 115 P-09
EQUIPMENT: CAT 320CL	Coordinates: 8N N7048425.0m E383991.0m	

SAMPLE TYPE UNDISTURBED DCPT AUGER BULK SPT CORE



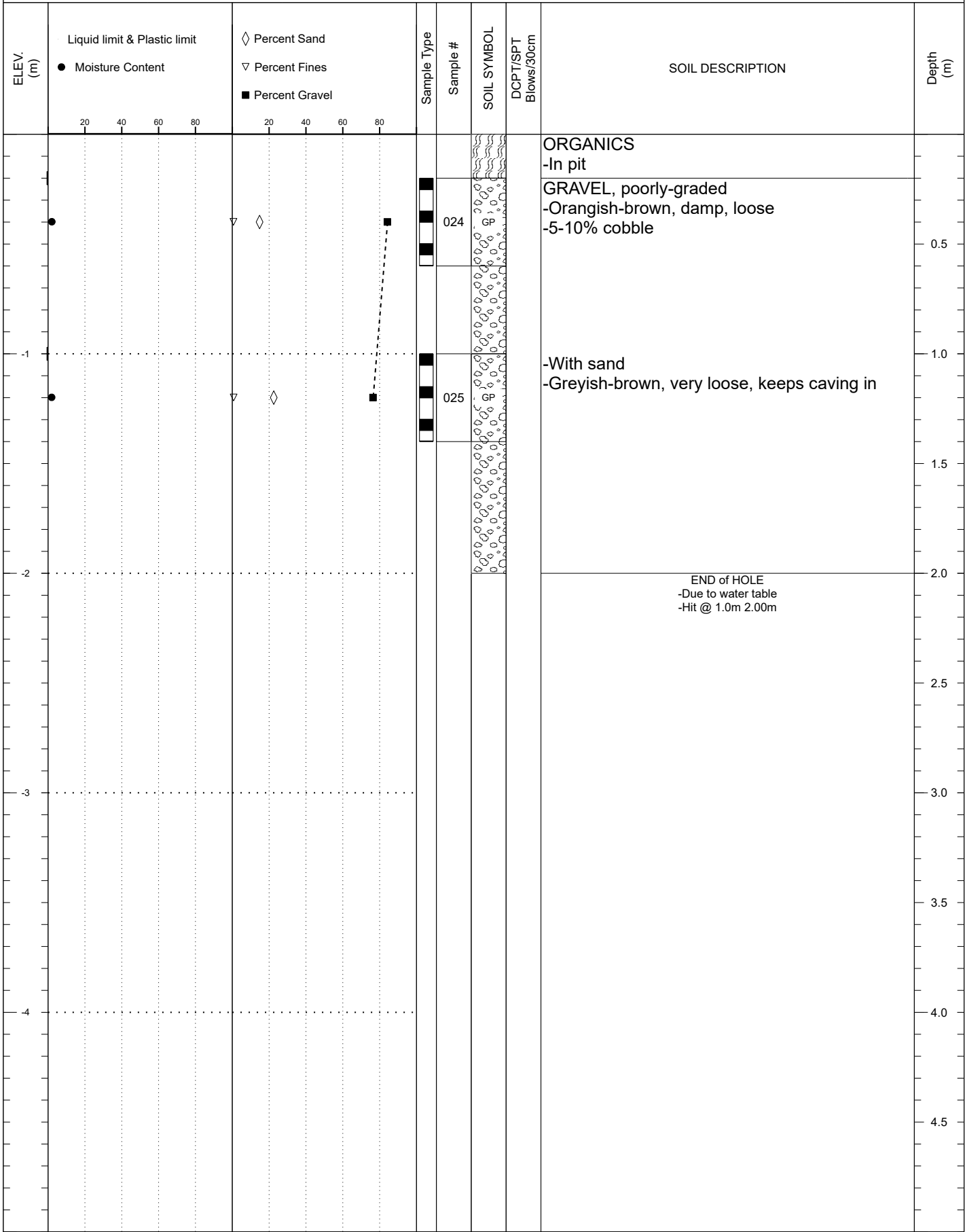
SUBSURFACE EXPLORATION AND TEST REPORT	02 Klondike Highway Pits	SOURCE/TP#: 913-5819
CLIENT: Transportation Engineering	Km 576.3 Rt - Hagars Camp	PROJECT NO: 115 P-09
EQUIPMENT: CAT 320CL	Coordinates: 8N N7048305.0m E383903.0m	

SAMPLE TYPE UNDISTURBED DCPT AUGER BULK SPT CORE



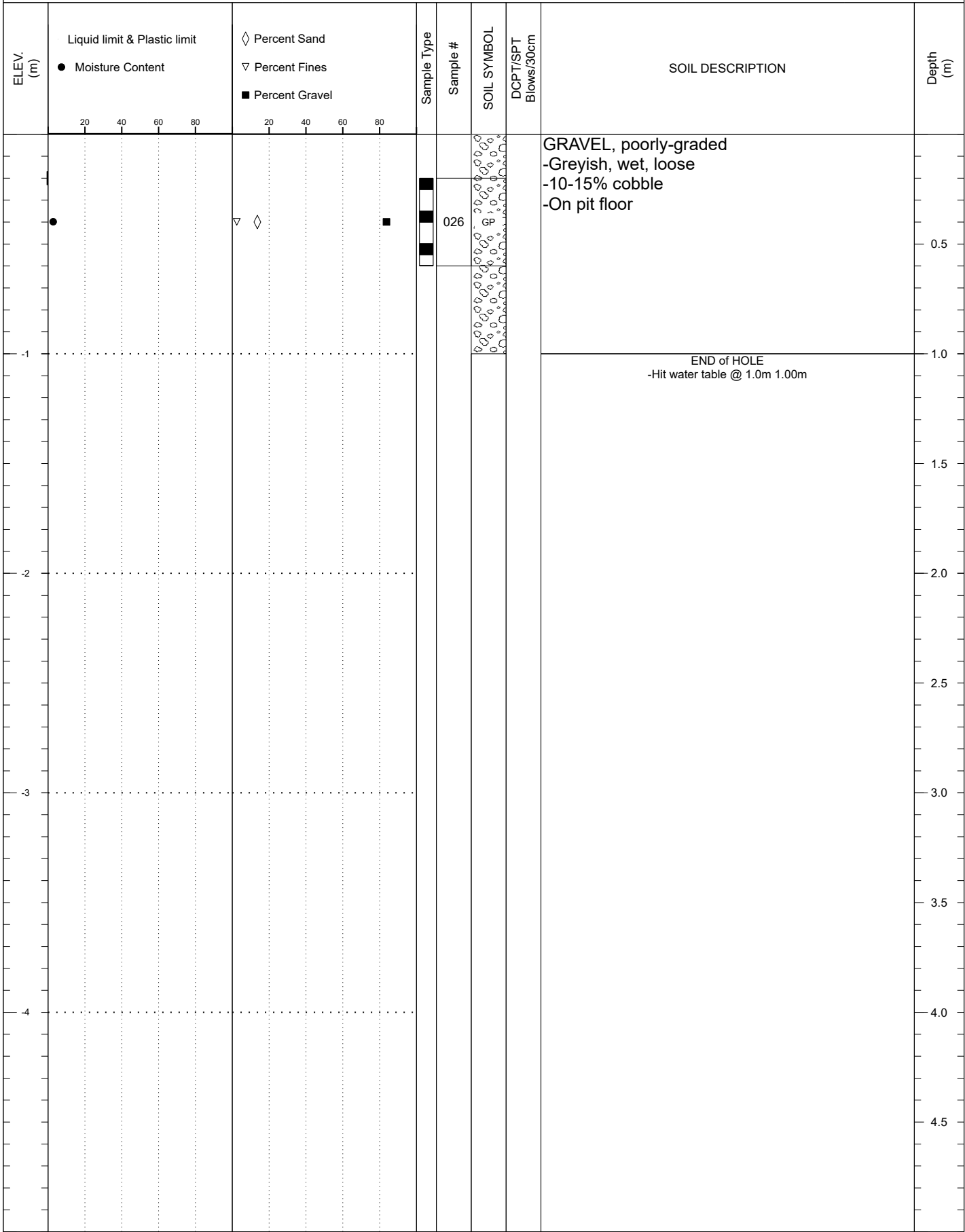
SUBSURFACE EXPLORATION AND TEST REPORT	02 Klondike Highway Pits	SOURCE/TP#: 913-5820
CLIENT: Transportation Engineering	Km 576.3 Rt - Hagars Camp	PROJECT NO: 115 P-09
EQUIPMENT: CAT 320CL	Coordinates: 8N N7048274.0m E383811.0m	

SAMPLE TYPE UNDISTURBED DCPT AUGER BULK SPT CORE



SUBSURFACE EXPLORATION AND TEST REPORT	02 Klondike Highway Pits	SOURCE/TP#: 913-5821
CLIENT: Transportation Engineering	Km 576.3 Rt - Hagars Camp	PROJECT NO: 115 P-09
EQUIPMENT: CAT 320CL	Coordinates: 8N N7048212.0m E383872.0m	

SAMPLE TYPE UNDISTURBED DCPT AUGER BULK SPT CORE



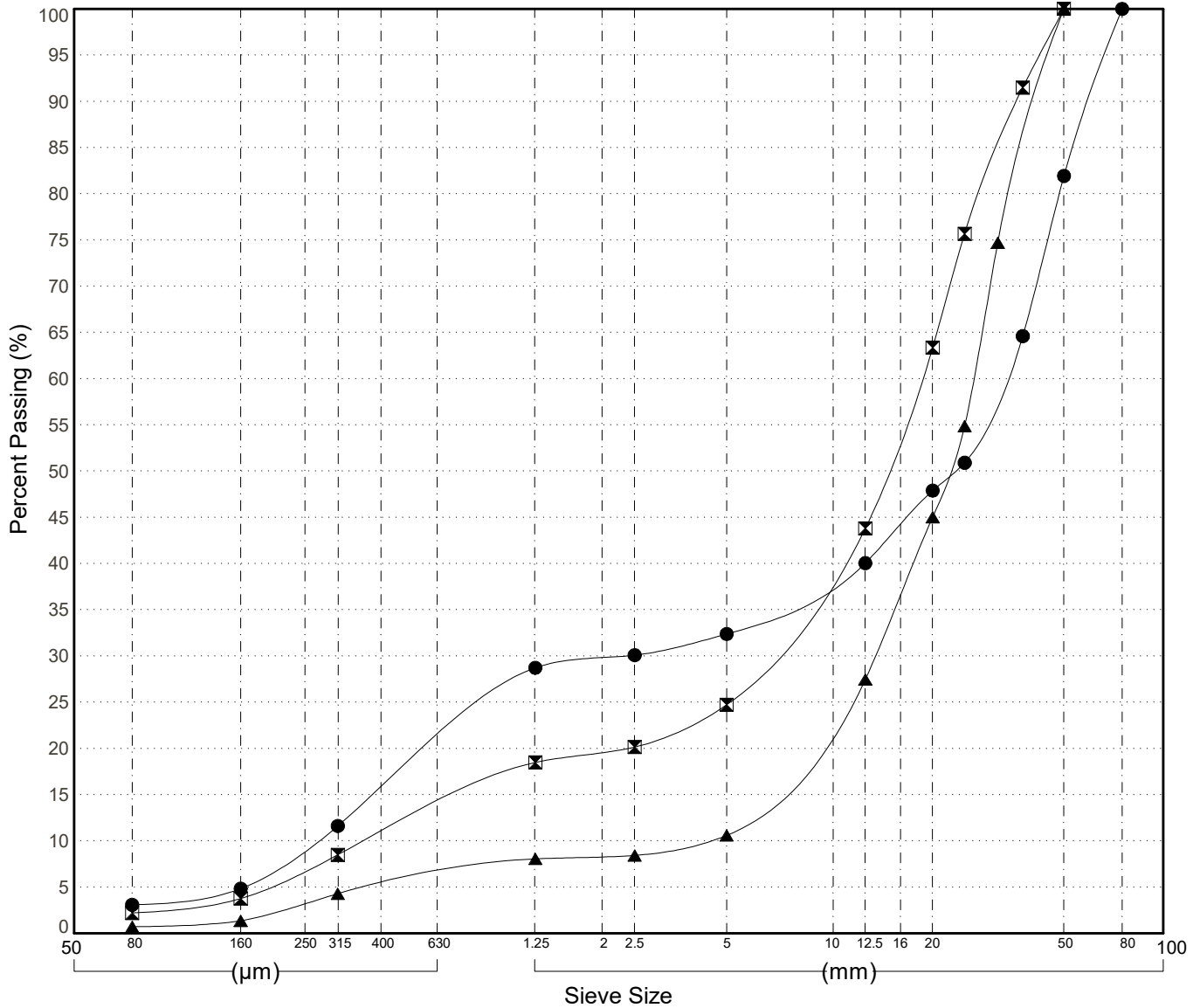
GRAIN SIZE ANALYSIS	Gravel Exploration Klondike Highway	SOURCE/TP#: 913-5812
McCrae Creek Contractor	km 576 RHS	PROJECT NO: 552-202021-0204-06-1
CAT 320CL	Coordinates:Z08V N7048138m E383943m	ELEVATION: m

Master Revised June 2017

Field #	Lab #	Depth	Classification	%H2O	LL	PL	PI	Cc	Cu	D10
● 001	001	0.2 to 0.6	POORLY GRADED GRAVEL with SAND(GP)	2.4	NP	NP	NP	0.7	122.0	0.27
☒ 002	002	1.2 to 1.6	POORLY GRADED GRAVEL with SAND(GP)	3.7	NP	NP	NP	5.4	47.6	0.39
▲ 003	003	3.4 to 3.8	WELL-GRADED GRAVEL(GW)	1.4	NP	NP	NP	1.7	6.6	3.99

Field #	Lab #	% PASSING														% Breakdown				
			100.0	80.0	50.0	25.0	20.0	12.5	10.0	5.0	2.0	0.850	0.400	0.250	0.160	0.080	Gravel	Sand	Silt	Clay
●	001	001	100.0	100.0	81.9	50.9	47.9	40.0	38.3	32.4	29.6	23.9	15.3	9.3	4.8	3.1	67.6	29.3	3.1	
☒	002	002	100.0	100.0	100.0	75.7	63.4	43.8	39.4	24.7	19.6	15.7	10.7	6.9	3.8	2.2	75.3	22.5	2.2	
▲	003	003	100.0	100.0	100.0	54.9	45.0	27.5	23.6	10.6	8.3	7.0	5.1	3.3	1.3	0.7	89.4	9.9	0.7	

Silt	Sand			Gravel	
	Fine	Medium	Coarse	Fine	Coarse



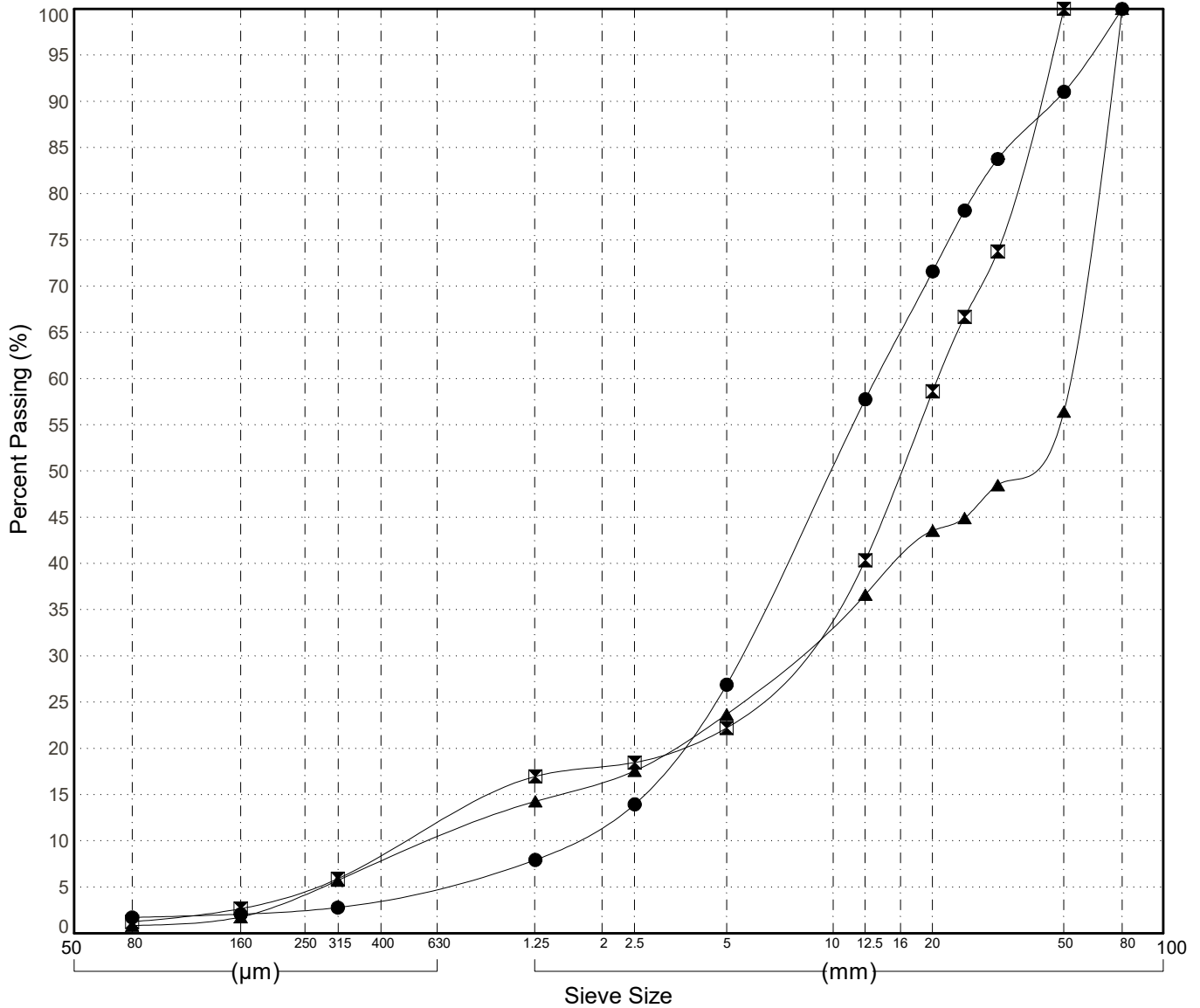
GRAIN SIZE ANALYSIS	Gravel Exploration Klondike Highway	SOURCE/TP#: 913-5813
McCrae Creek Contractor	km 576 RHS	PROJECT NO: 552-202021-0204-06-1
CAT 320CL	Coordinates:Z08V N7048030m E384025m	ELEVATION: m

Master Revised June 2017

Field #	Lab #	Depth	Classification	%H2O	LL	PL	PI	Cc	Cu	D10
● 004	004	0.2 to 0.6	WELL-GRADED GRAVEL with SAND(GW)	2.1	NP	NP	NP	1.3	8.5	1.59
☒ 005	005	1.0 to 1.4	POORLY GRADED GRAVEL with SAND(GP)	1.8	NP	NP	NP	4.7	39.6	0.53
▲ 006	006	3.2 to 3.6	WELL-GRADED GRAVEL with SAND(GW)	2.0	NP	NP	NP	1.8	82.3	0.63

Field #	Lab #	% PASSING	Sieve Size (mm)													% Breakdown				
			100.0	80.0	50.0	25.0	20.0	12.5	10.0	5.0	2.0	0.850	0.400	0.250	0.160	0.080	Gravel	Sand	Silt	Clay
●	004	004	100.0	100.0	91.0	78.2	71.6	57.8	50.6	26.9	12.0	6.5	3.9	2.5	2.1	1.7	73.1	25.2		1.7
☒	005	005	100.0	100.0	100.0	66.7	58.6	40.4	36.2	22.2	18.0	13.9	8.3	4.8	2.7	1.2	77.8	21.0		1.2
▲	006	006	100.0	100.0	56.4	44.9	43.6	36.6	33.7	23.7	16.5	11.9	7.6	4.4	1.7	0.8	76.3	22.9		0.8

Silt	Sand			Gravel	
	Fine	Medium	Coarse	Fine	Coarse



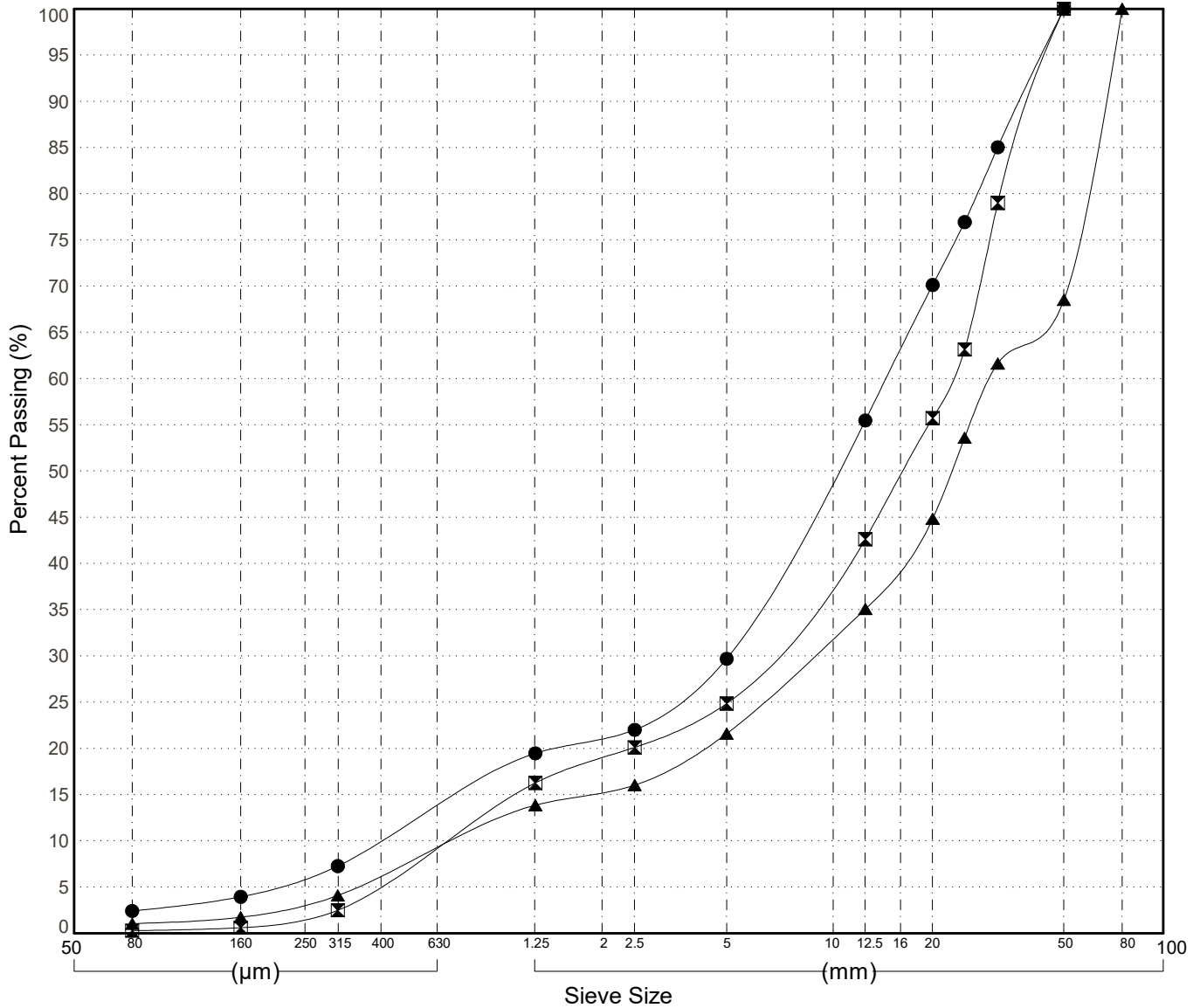
GRAIN SIZE ANALYSIS	Gravel Exploration Klondike Highway	SOURCE/TP#: 913-5814
McCrae Creek Contractor	km 576 RHS	PROJECT NO: 552-202021-0204-06-1
CAT 320CL	Coordinates:Z08V N7048105m E384077m	ELEVATION: m

Master Revised June 2017

Field #	Lab #	Depth	Classification	%H2O	LL	PL	PI	Cc	Cu	D10
● 007	007	0.3 to 0.6	POORLY GRADED GRAVEL with SAND(GP)	2.5	NP	NP	NP	3.7	33.7	0.43
☒ 008	008	1.2 to 1.6	WELL-GRADED GRAVEL with SAND(GW)	1.6	NP	NP	NP	2.6	34.1	0.67
▲ 009	009	3.2 to 3.6	POORLY GRADED GRAVEL with SAND(GP)	1.7	NP	NP	NP	3.5	41.4	0.73

Field #	Lab #	%PASSING														% Breakdown				
			100.0	80.0	50.0	25.0	20.0	12.5	10.0	5.0	2.0	0.850	0.400	0.250	0.160	0.080	Gravel	Sand	Silt	Clay
●	007	007	100.0	100.0	100.0	76.9	70.1	55.5	49.5	29.7	21.2	16.1	9.9	6.1	3.9	2.4	70.3	27.3		2.4
☒	008	008	100.0	100.0	100.0	63.2	55.7	42.6	38.5	24.9	18.9	12.4	5.5	1.8	0.6	0.3	75.1	24.6		0.3
▲	009	009	100.0	100.0	68.5	53.6	44.8	35.1	32.0	21.6	15.3	11.1	6.2	3.3	1.7	1.0	78.4	20.6		1.0

Silt	Sand			Gravel	
	Fine	Medium	Coarse	Fine	Coarse



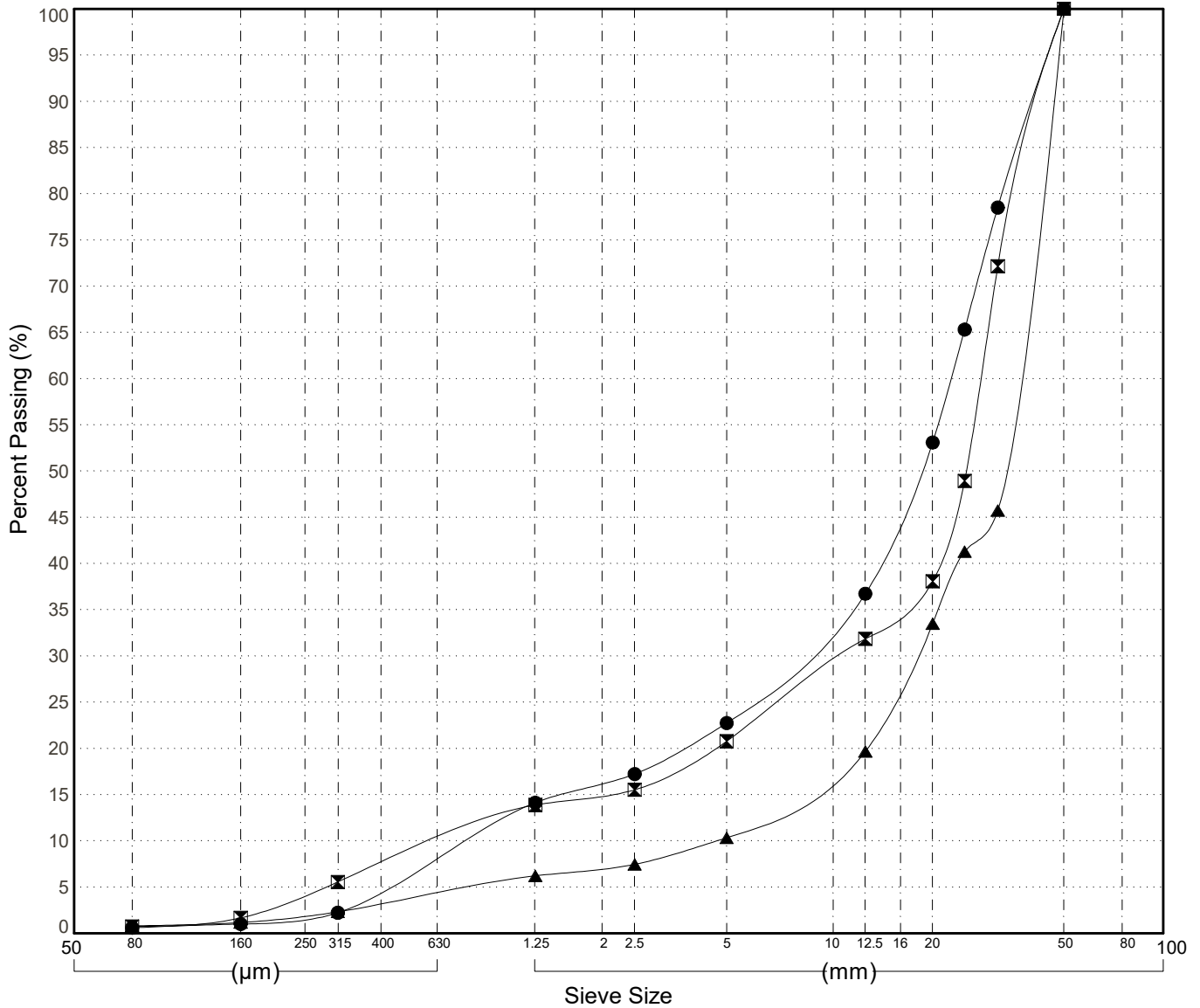
GRAIN SIZE ANALYSIS	Gravel Exploration Klondike Highway	SOURCE/TP#: 913-5815
McCrae Creek Contractor	km 576 RHS	PROJECT NO: 552-202021-0204-06-1
CAT 320CL	Coordinates:Z08V N7048201m E384128m	ELEVATION: m

Master Revised June 2017

Field #	Lab #	Depth	Classification	%H2O	LL	PL	PI	Cc	Cu	D10
● 010	010	0.4 to 0.8	POORLY GRADED GRAVEL with SAND(GP)	1.4	NP	NP	NP	3.5	29.3	0.78
☒ 011	011	1.4 to 1.8	POORLY GRADED GRAVEL with SAND(GP)	2.2	NP	NP	NP	6.2	42.4	0.66
▲ 012	012	3.0 to 3.4	WELL-GRADED GRAVEL(GW)	1.2	NP	NP	NP	2.0	8.1	4.41

Field #	Lab #	%PASSING	Sieve Size (mm)													% Breakdown				
			100.0	80.0	50.0	25.0	20.0	12.5	10.0	5.0	2.0	0.850	0.400	0.250	0.160	0.080	Gravel	Sand	Silt	Clay
●	010	010	100.0	100.0	100.0	65.3	53.1	36.7	33.5	22.7	16.2	10.8	4.8	1.8	1.0	0.6	77.3	22.1		0.6
☒	011	011	100.0	100.0	100.0	48.9	38.1	31.8	29.3	20.8	15.0	11.5	7.4	4.2	1.7	0.7	79.2	20.0		0.7
▲	012	012	100.0	100.0	100.0	41.3	33.5	19.7	17.5	10.3	7.1	5.1	3.2	1.9	1.2	0.8	89.7	9.5		0.8

Silt	Sand			Gravel	
	Fine	Medium	Coarse	Fine	Coarse



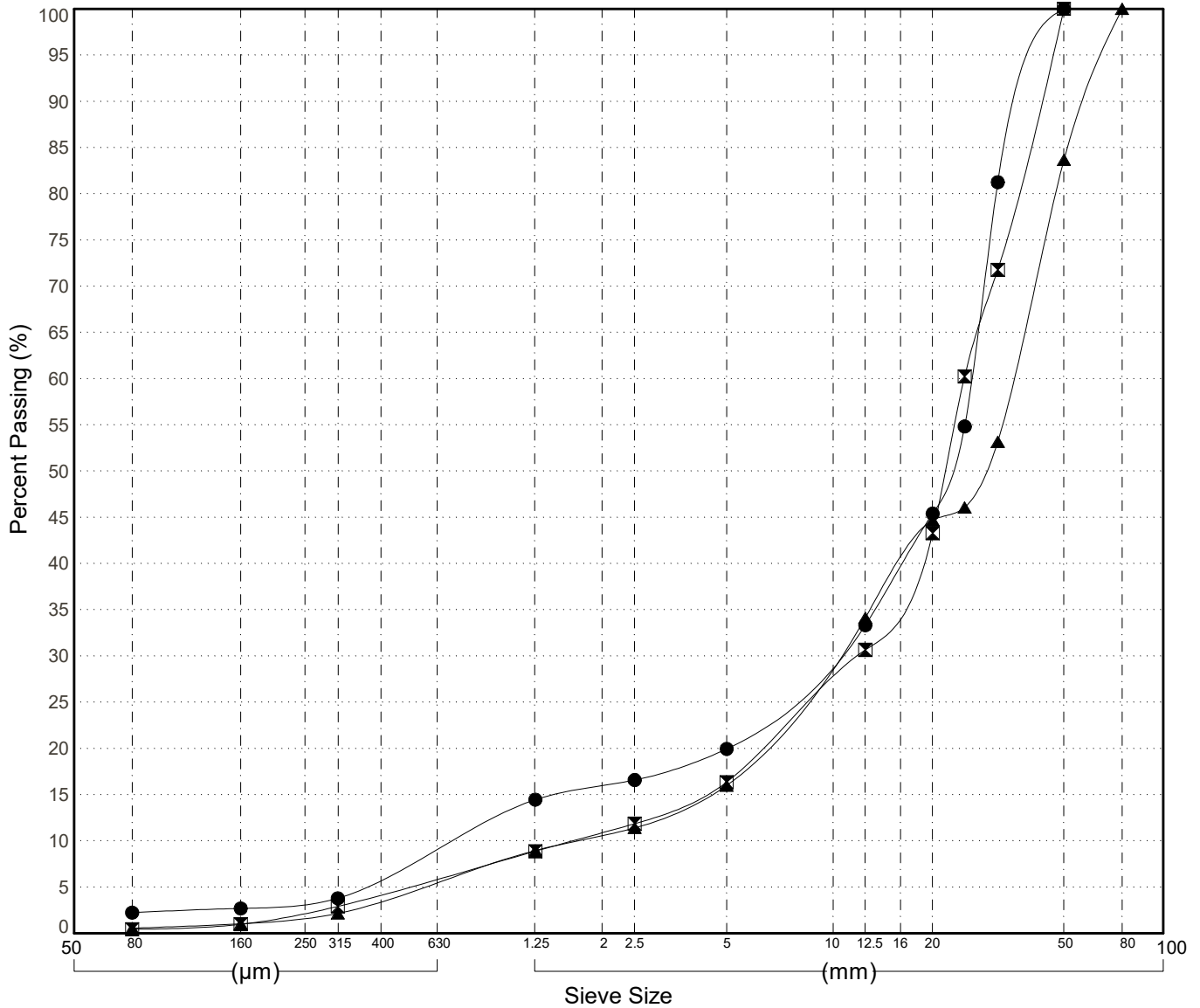
GRAIN SIZE ANALYSIS	Gravel Exploration Klondike Highway	SOURCE/TP#: 913-5816
McCrae Creek Contractor	km 576 RHS	PROJECT NO: 552-202021-0204-06-1
CAT 320CL	Coordinates:Z08V N7048335m E384185m	ELEVATION: m

Master Revised June 2017

Field #	Lab #	Depth	Classification	%H ₂ O	LL	PL	PI	C _c	C _u	D ₁₀
● 013	013	0.2 to 0.4	POORLY GRADED GRAVEL with SAND(GP)	1.6	NP	NP	NP	5.3	37.2	0.70
☒ 014	014	2.0 to 2.4	POORLY GRADED GRAVEL with SAND(GP)	1.8	NP	NP	NP	3.5	15.3	1.62
▲ 015	015	3.4 to 3.8	WELL-GRADED GRAVEL with SAND(GW)	1.1	NP	NP	NP	1.7	20.8	1.68

Field #	Lab #	% PASSING	Sieve Size (mm)													% Breakdown			
			100.0	80.0	50.0	25.0	20.0	12.5	10.0	5.0	2.0	0.850	0.400	0.250	0.160	0.080	Gravel	Sand	Clay
●	013	013	100.0	100.0	100.0	54.8	45.4	33.3	30.2	19.9	15.9	11.5	6.1	3.4	2.7	2.2	80.1	17.7	2.2
☒	014	014	100.0	100.0	100.0	60.2	43.3	30.7	27.4	16.4	10.9	7.2	4.2	2.2	1.0	0.4	83.6	15.9	0.4
▲	015	015	100.0	100.0	83.7	46.1	44.7	34.1	29.9	16.0	10.6	7.1	3.6	1.8	1.0	0.6	84.0	15.4	0.6

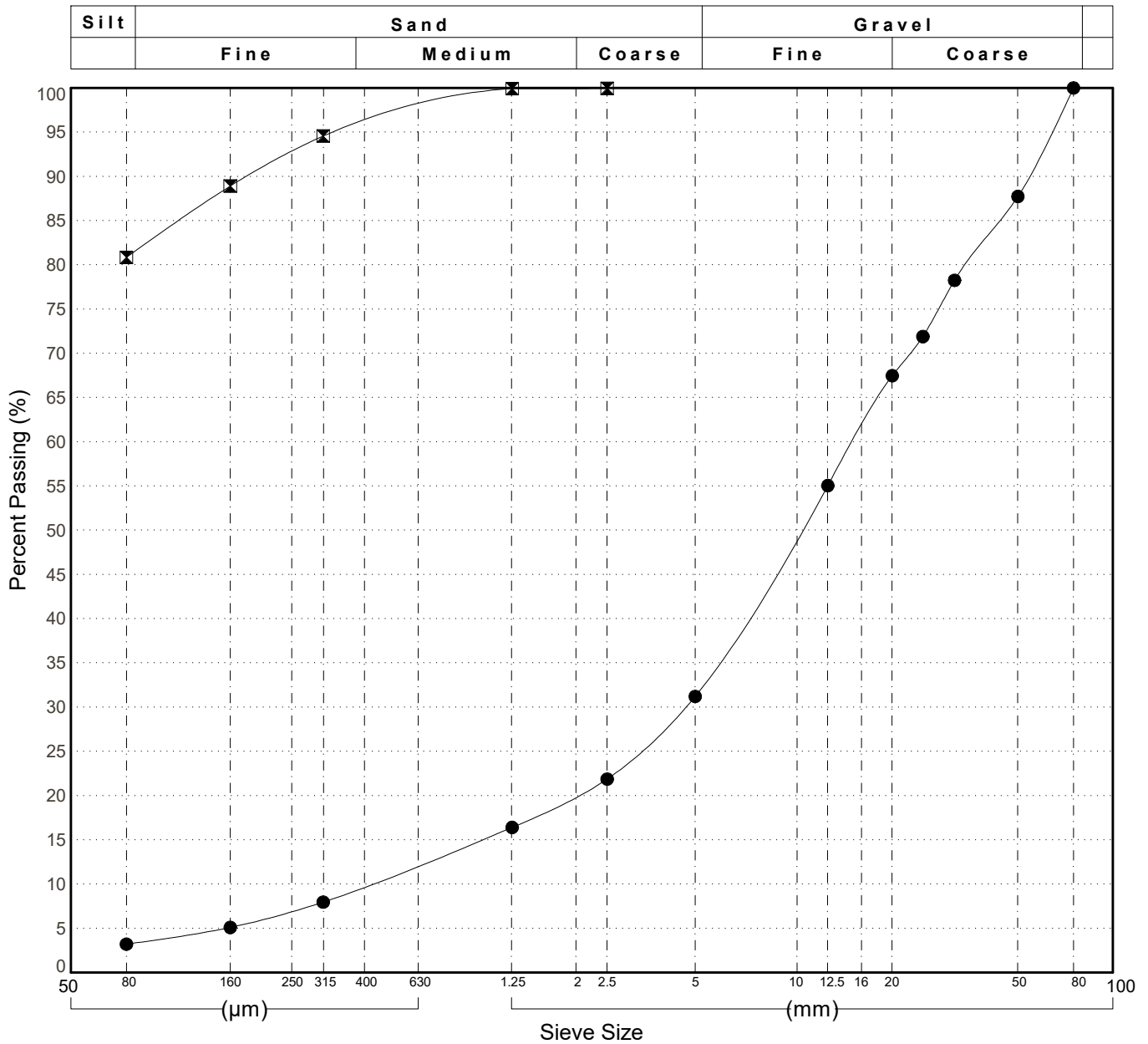
Silt	Sand			Gravel	
	Fine	Medium	Coarse	Fine	Coarse



GRAIN SIZE ANALYSIS	Gravel Exploration Klondike Highway	SOURCE/TP#: 913-5817
McCrae Creek Contractor	km 576 RHS	PROJECT NO: 552-202021-0204-06-1
CAT 320CL	Coordinates:Z08V N7048336m E384054m	ELEVATION: m

Master Revised June 2017

Field #	Lab #	Depth	Classification	%H2O	LL	PL	PI	Cc	Cu	D10										
● 016	016	0.2 to 0.6	WELL-GRADED GRAVEL with SAND(GW)	1.5	NP	NP	NP	2.9	34.3	0.44										
☒ 017	017	1.0 to 1.4	SILT with SAND(ML)	34.1	NP	NP	NP													
Field #	Lab #	100.0	80.0	50.0	25.0	20.0	12.5	10.0	5.0	2.0	0.850	0.400	0.250	0.160	0.080	% Breakdown				
																Gravel	Sand	Silt	Clay	
● 016	016	100.0	100.0	87.7	71.9	67.5	55.0	49.5	31.2	20.1	14.0	9.8	7.0	5.1	3.2	68.8	28.0		3.2	
☒ 017	017	100.0	100.0	100.0	100.0	100.0	100.0	100.0	100.0	99.9	98.4	95.7	92.6	88.9	80.8		19.1		80.8	



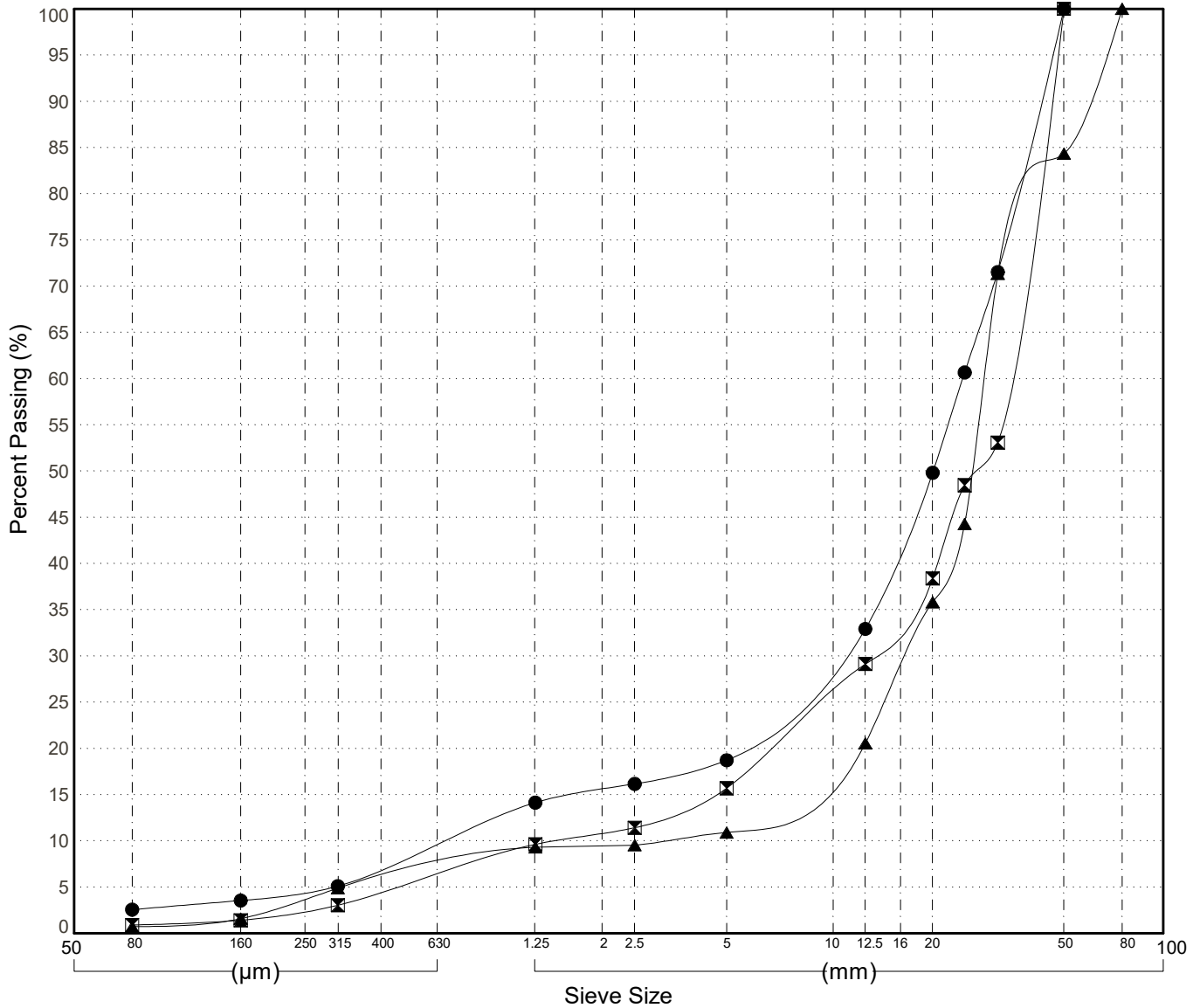
GRAIN SIZE ANALYSIS	Gravel Exploration Klondike Highway	SOURCE/TP#: 913-5818
McCrae Creek Contractor	km 576 RHS	PROJECT NO: 552-202021-0204-06-1
CAT 320CL	Coordinates:Z08V N7048425m E383991m	ELEVATION: m

Master Revised June 2017

Field #	Lab #	Depth	Classification	%H2O	LL	PL	PI	Cc	Cu	D10
● 018	018	0.2 to 0.6	POORLY GRADED GRAVEL with SAND(GP)	1.1	NP	NP	NP	6.4	37.1	0.67
☒ 019	019	1.4 to 1.8	POORLY GRADED GRAVEL(GP)	1.5	NP	NP	NP	3.5	23.4	1.44
▲ 020	020	3.2 to 3.6	POORLY GRADED GRAVEL(GP)	0.8	NP	NP	NP	3.1	9.2	3.11

Field #	Lab #	%PASSING														% Breakdown				
			100.0	80.0	50.0	25.0	20.0	12.5	10.0	5.0	2.0	0.850	0.400	0.250	0.160	0.080	Gravel	Sand	Silt	Clay
●	018	018	100.0	100.0	100.0	60.7	49.8	32.9	29.7	18.7	15.5	11.6	7.1	4.6	3.5	2.6	81.3	16.2		2.6
☒	019	019	100.0	100.0	100.0	48.5	38.4	29.1	26.0	15.7	10.8	7.8	4.5	2.5	1.4	0.9	84.3	14.8		0.9
▲	020	020	100.0	100.0	84.3	44.3	35.8	20.5	18.3	10.9	9.5	8.1	5.8	3.8	1.6	0.7	89.1	10.2		0.7

Silt	Sand			Gravel	
	Fine	Medium	Coarse	Fine	Coarse



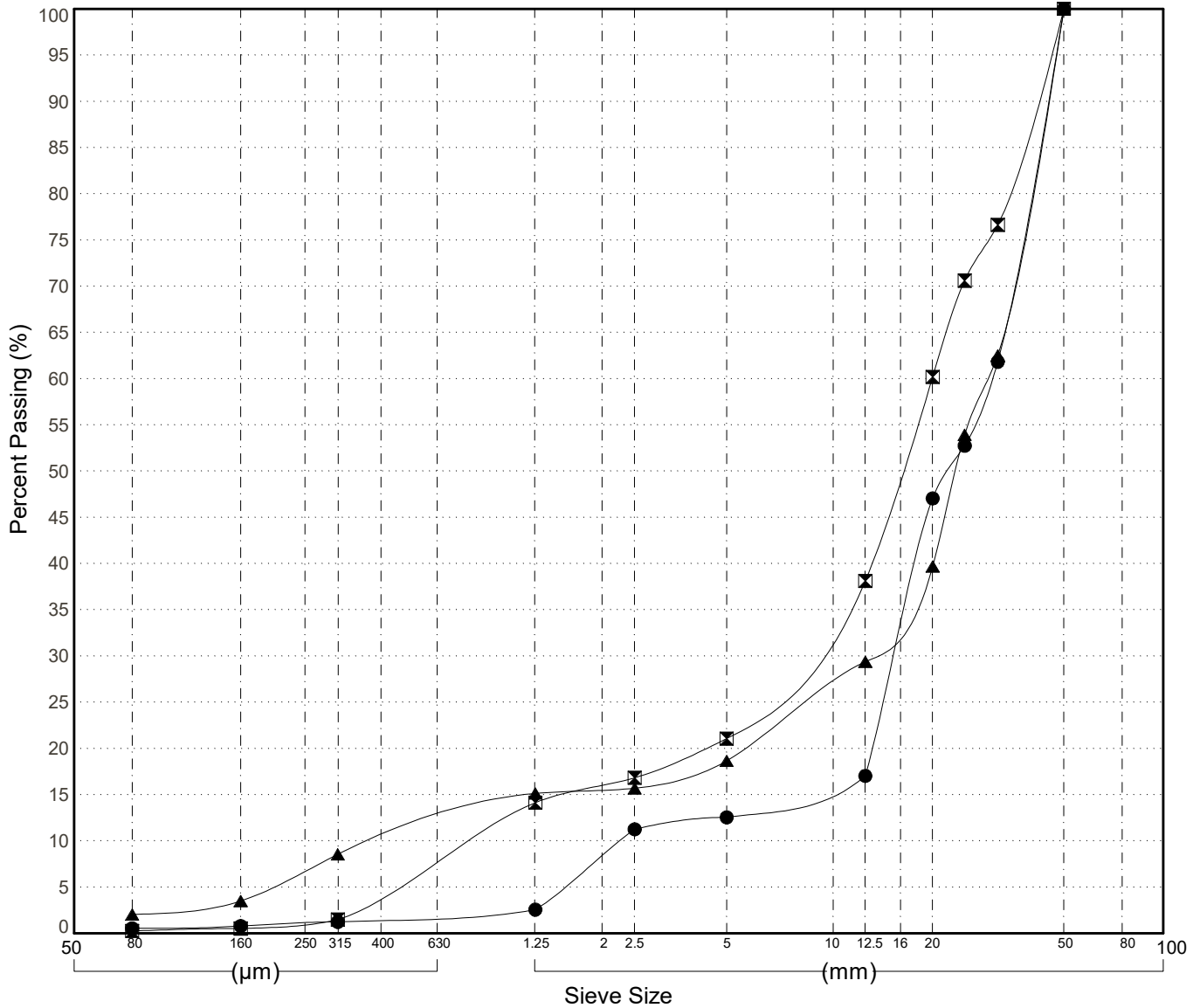
GRAIN SIZE ANALYSIS	Gravel Exploration Klondike Highway	SOURCE/TP#: 913-5819
McCrae Creek Contractor	km 576 RHS	PROJECT NO: 552-202021-0204-06-1
CAT 320CL	Coordinates:Z08V N7048305m E383903m	ELEVATION: m

Master Revised June 2017

Field #	Lab #	Depth	Classification	%H2O	LL	PL	PI	Cc	Cu	D10
● 021	021	0.3 to 0.7	POORLY GRADED GRAVEL(GP)	1.7	NP	NP	NP	3.4	13.3	2.26
☒ 022	022	1.8 to 2.2	POORLY GRADED GRAVEL with SAND(GP)	1.0	NP	NP	NP	3.9	25.0	0.80
▲ 023	023	3.4 to 3.8	POORLY GRADED GRAVEL with SAND(GP)	1.7	NP	NP	NP	13.2	68.9	0.43

Field #	Lab #	% PASSING														% Breakdown				
			100.0	80.0	50.0	25.0	20.0	12.5	10.0	5.0	2.0	0.850	0.400	0.250	0.160	0.080	Gravel	Sand	Silt	Clay
●	021	021	100.0	100.0	100.0	52.7	47.0	17.0	16.0	12.5	8.4	2.2	1.5	1.1	0.8	0.5	87.5	12.0		0.5
☒	022	022	100.0	100.0	100.0	70.6	60.2	38.1	34.2	21.1	16.0	10.6	4.2	1.1	0.5	0.3	78.9	20.8		0.3
▲	023	023	100.0	100.0	100.0	53.9	39.7	29.4	26.9	18.7	15.5	13.3	10.0	6.8	3.5	2.0	81.3	16.6		2.0

Silt	Sand			Gravel	
	Fine	Medium	Coarse	Fine	Coarse

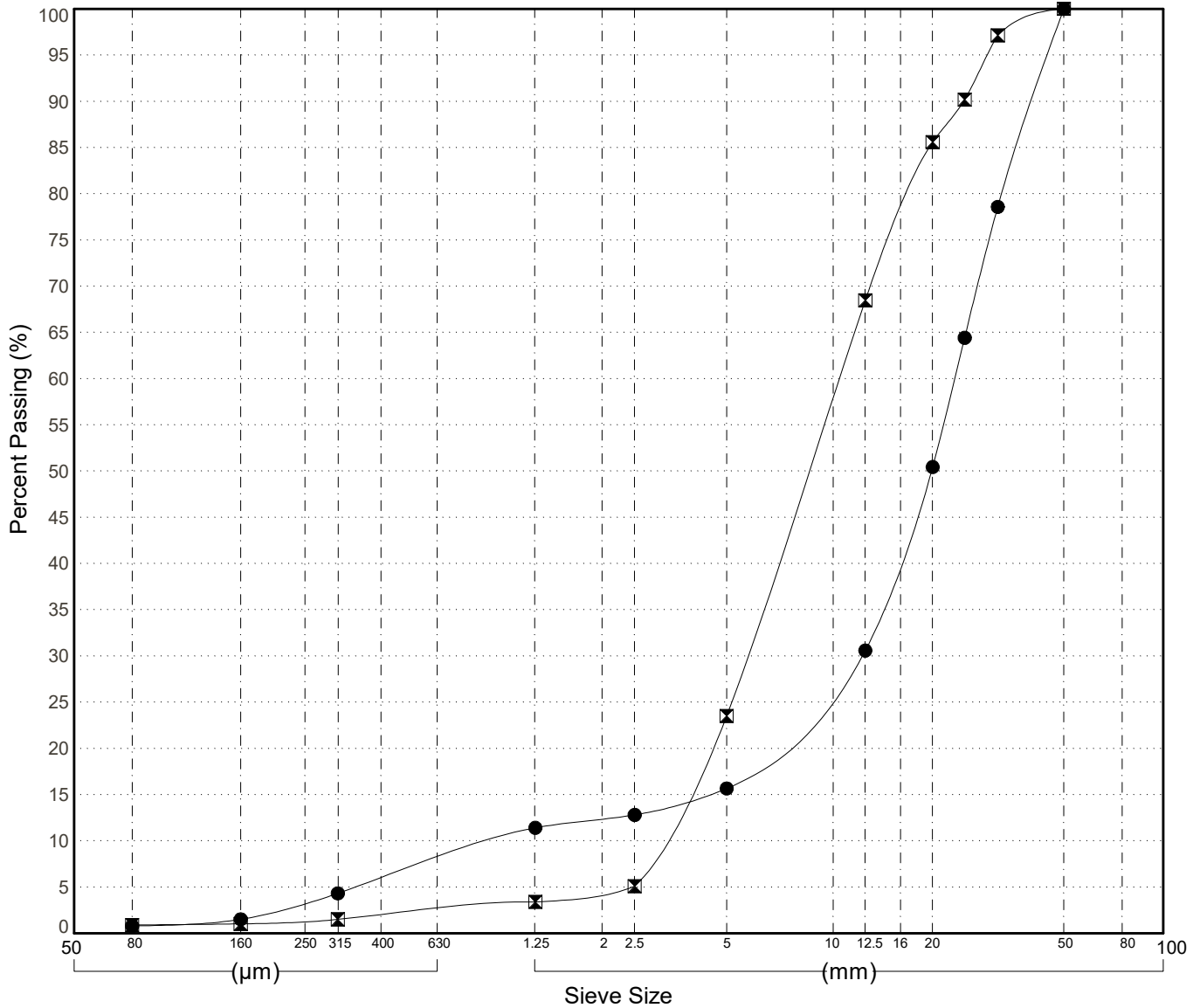


GRAIN SIZE ANALYSIS	Gravel Exploration Klondike Highway	SOURCE/TP#: 913-5820
McCrae Creek Contractor	km 576 RHS	PROJECT NO: 552-202021-0204-06-1
CAT 320CL	Coordinates:Z08V N7048274m E383811m	ELEVATION: m

Master Revised June 2017

Field #	Lab #	Depth	Classification	%H2O	LL	PL	PI	Cc	Cu	D10										
● 024	024	0.2 to 0.6	POORLY GRADED GRAVEL(GP)	2.2	NP	NP	NP	6.5	24.5	0.95										
☒ 025	025	1.0 to 1.4	POORLY GRADED GRAVEL with SAND(GP)	2.1	NP	NP	NP	1.0	3.5	2.97										
Field #	Lab #	100.0	80.0	50.0	25.0	20.0	12.5	10.0	5.0	2.0	0.850	0.400	0.250	0.160	0.080	% Breakdown				
																Gravel	Sand	Silt	Clay	
● 024	024	100.0	100.0	100.0	64.4	50.4	30.6	27.1	15.7	12.4	9.4	5.9	3.4	1.5	0.8	84.3	14.9		0.8	
☒ 025	025	100.0	100.0	100.0	90.2	85.6	68.5	58.1	23.5	4.6	2.9	1.9	1.3	1.0	0.9	76.5	22.6		0.9	

Silt	Sand			Gravel	
	Fine	Medium	Coarse	Fine	Coarse



GRAIN SIZE ANALYSIS	Gravel Exploration Klondike Highway	SOURCE/TP#: 913-5821
McCrae Creek Contractor	km 576 RHS	PROJECT NO: 552-202021-0204-06-1
CAT 320CL	Coordinates:Z08V N7048212m E383872m	ELEVATION: m

Master Revised June 2017

Field #	Lab #	Depth	Classification													%H2O	LL	PL	PI	Cc	Cu	D10	
● 026	026	0.2 to 0.6	POORLY GRADED GRAVEL(GP)													3.0	NP	NP	NP	15.7	93.7	0.34	
Field #	Lab #	100.0	80.0	50.0	25.0	20.0	12.5	10.0	5.0	2.0	0.850	0.400	0.250	0.160	0.080	% Breakdown							
● 026	026	100.0	100.0	100.0	47.3	39.6	28.9	26.0	16.2	12.7	11.7	10.4	8.2	5.0	2.6	Gravel	Sand	Silt	Clay				
																83.8	13.7		2.6				

Silt	Sand			Gravel	
	Fine	Medium	Coarse	Fine	Coarse

