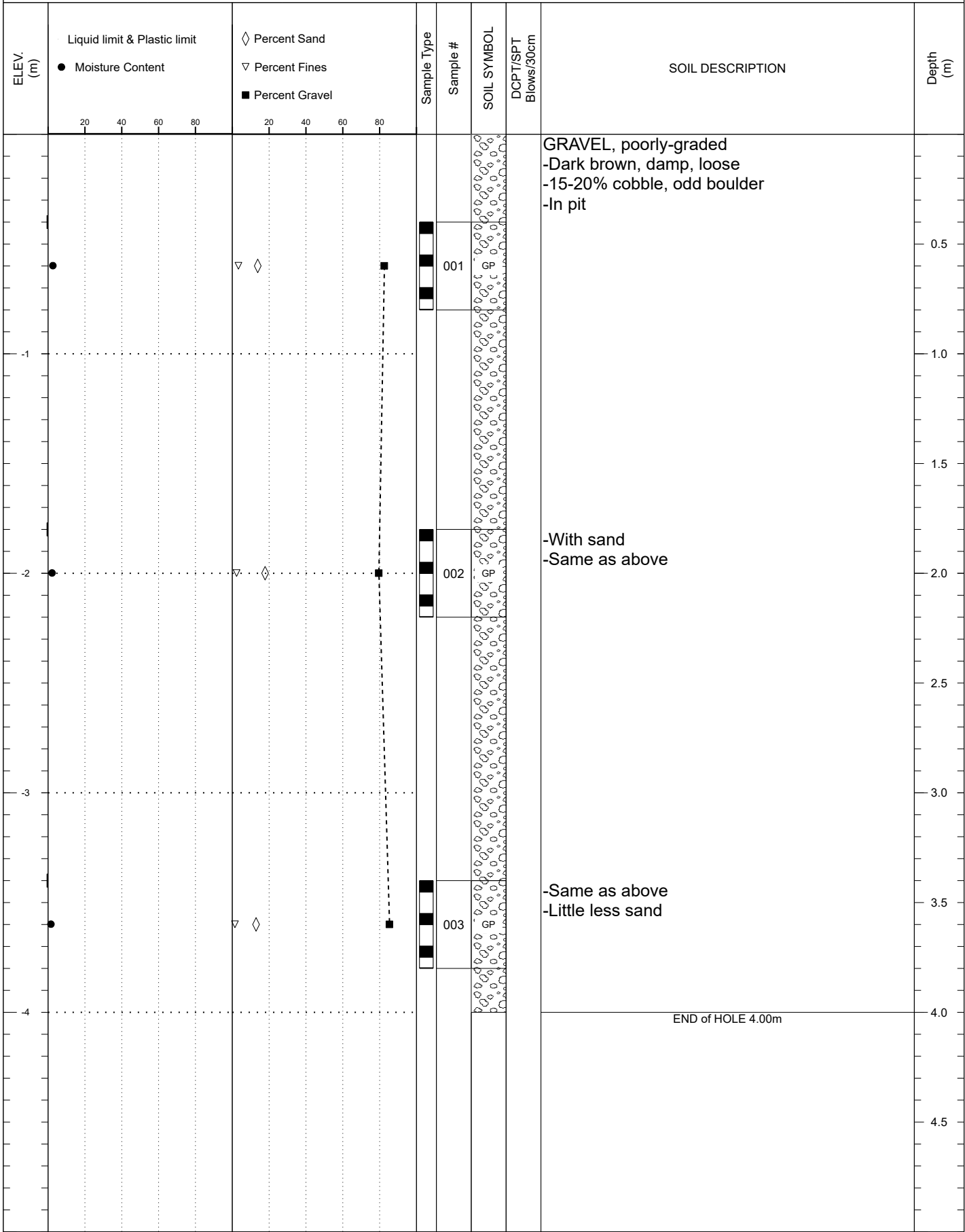


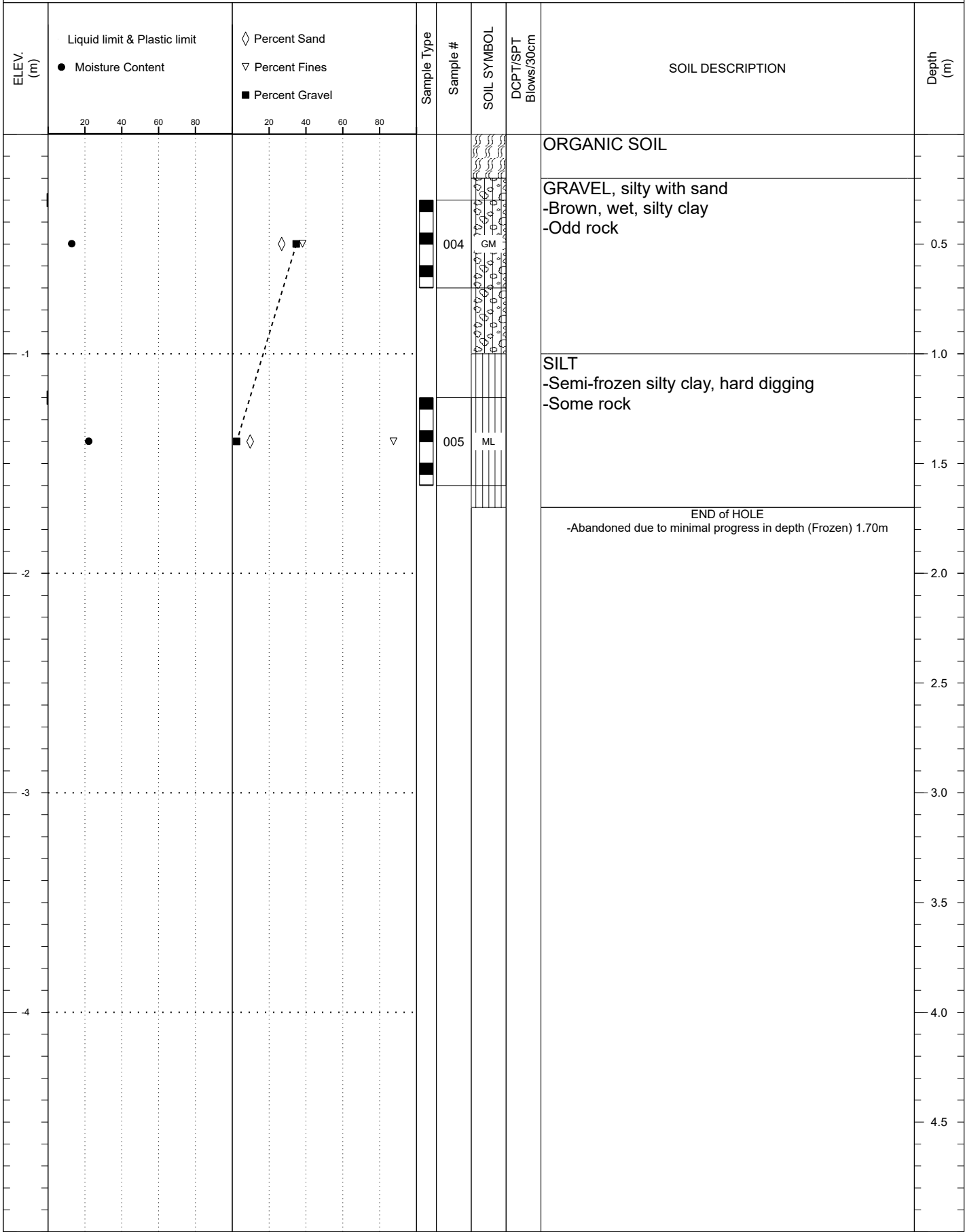
SUBSURFACE EXPLORATION AND TEST REPORT	02 Klondike Highway Pits	SOURCE/TP#: 914-5822
CLIENT: Transportation Engineering	km 616.7Lt - Collins Creek	PROJECT NO: 115 P-11
EQUIPMENT: CAT 320CL	Coordinates: 08N N7075592.0m E361569.0m	

SAMPLE TYPE     UNDISTURBED     DCPT     AUGER     BULK     SPT     CORE



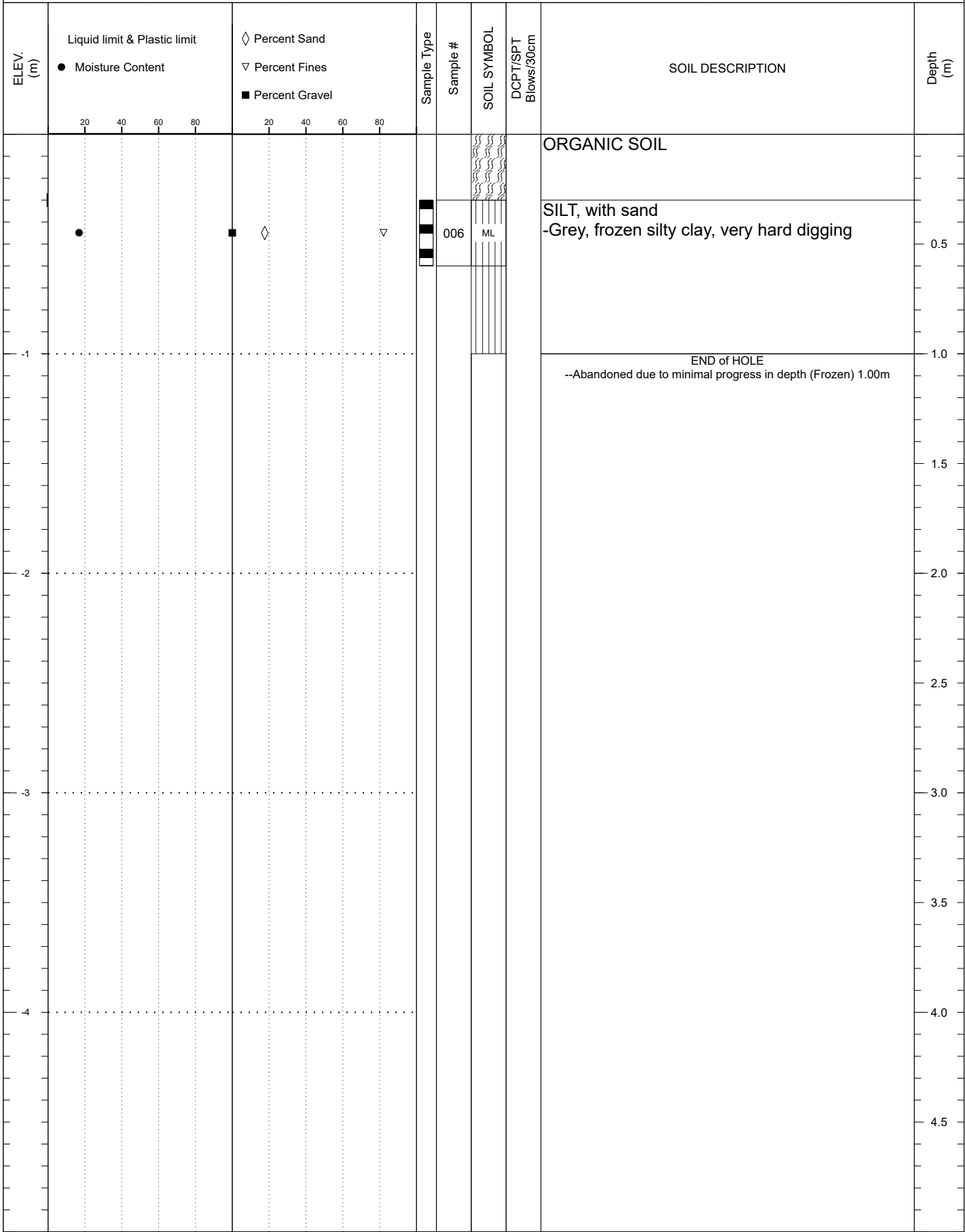
SUBSURFACE EXPLORATION AND TEST REPORT	02 Klondike Highway Pits	SOURCE/TP#: 914-5823
CLIENT: Transportation Engineering	km 616.7Lt - Collins Creek	PROJECT NO: 115 P-11
EQUIPMENT: CAT 320CL	Coordinates: 08N N7075473.0m E361422.0m	

SAMPLE TYPE     UNDISTURBED     DCPT     AUGER     BULK     SPT     CORE



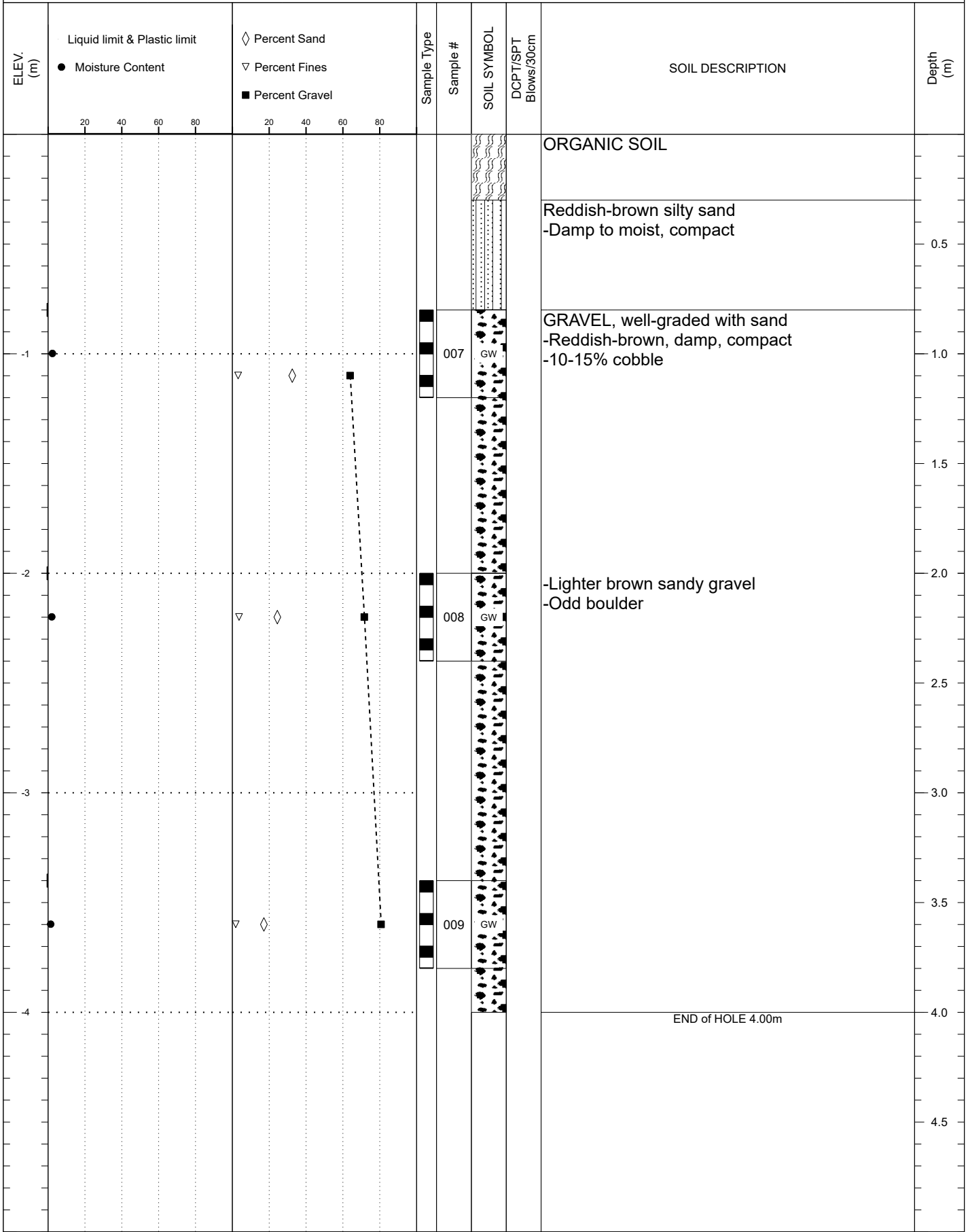
SUBSURFACE EXPLORATION AND TEST REPORT	02 Klondike Highway Pits	SOURCE/TP#: 914-5824
CLIENT: Transportation Engineering	km 616.7Lt - Collins Creek	PROJECT NO: 115 P-11
EQUIPMENT: CAT 320CL	Coordinates: 08N N7075505.0m E361317.0m	

SAMPLE TYPE     UNDISTURBED     DCPT     AUGER     BULK     SPT     CORE



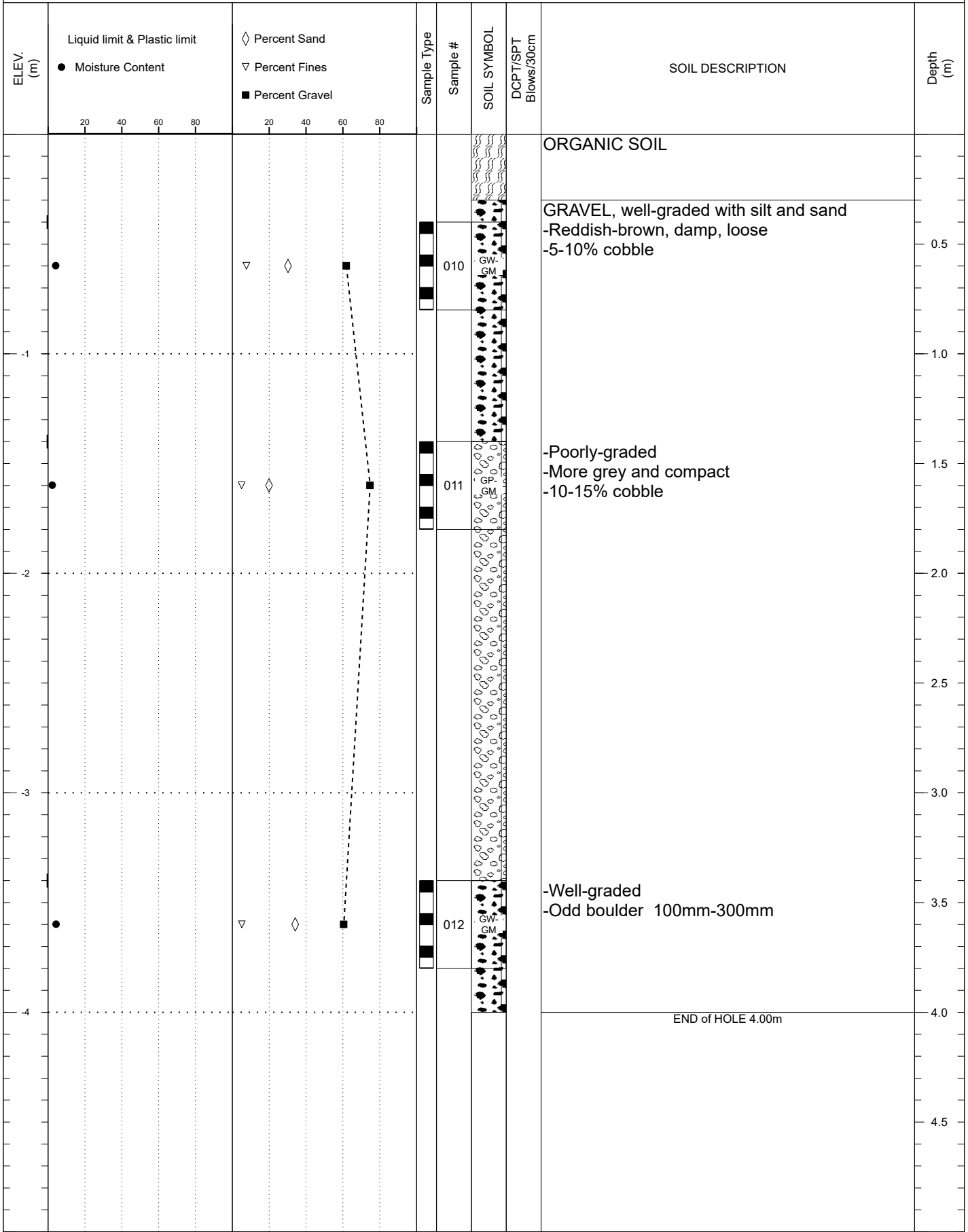
SUBSURFACE EXPLORATION AND TEST REPORT	02 Klondike Highway Pits	SOURCE/TP#: 914-5825
CLIENT: Transportation Engineering	km 616.7Lt - Collins Creek	PROJECT NO: 115 P-11
EQUIPMENT: CAT 320CL	Coordinates: 08N N7075611.0m E361352.0m	

SAMPLE TYPE     UNDISTURBED     DCPT     AUGER     BULK     SPT     CORE



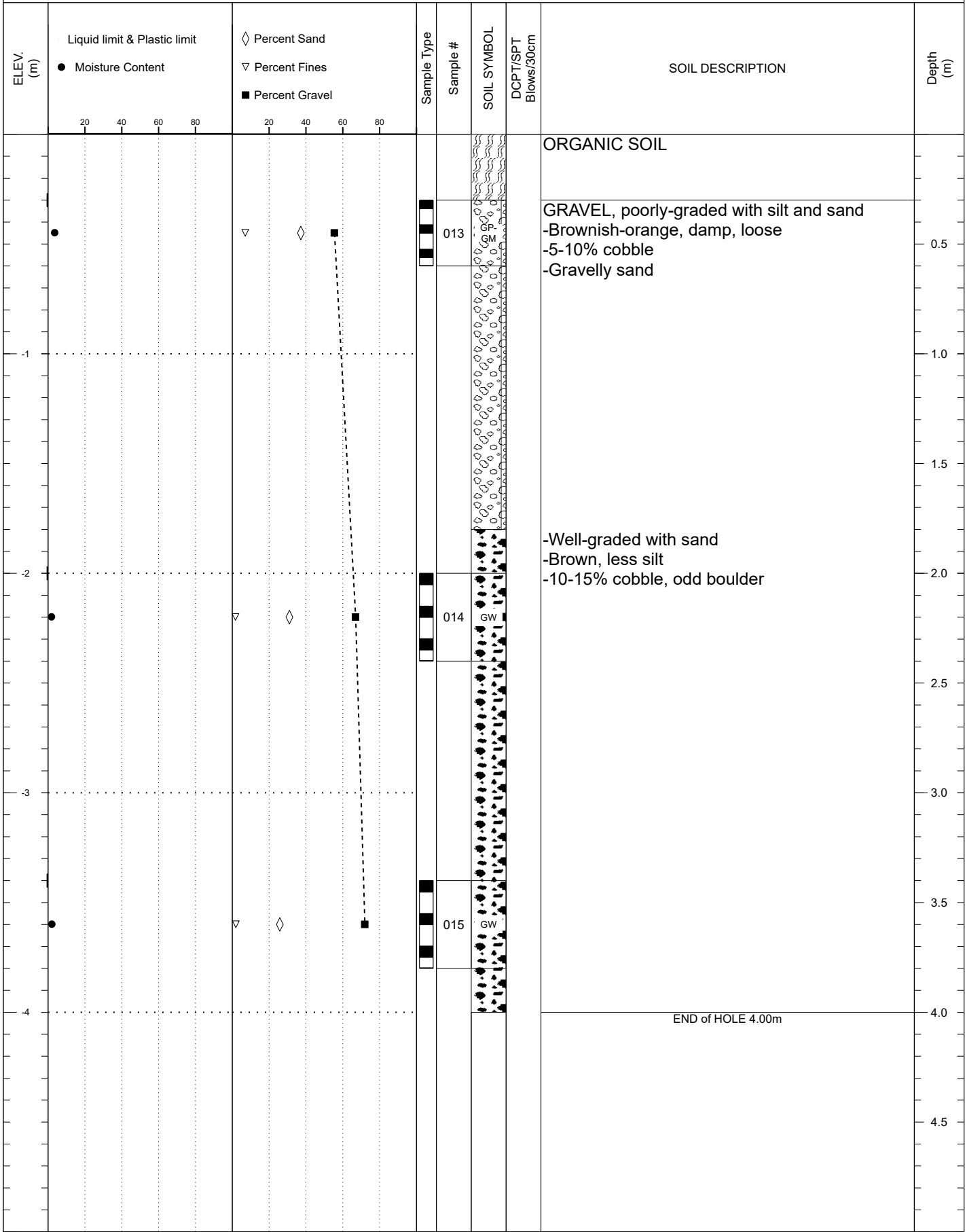
SUBSURFACE EXPLORATION AND TEST REPORT	02 Klondike Highway Pits	SOURCE/TP#: 914-5826
CLIENT: Transportation Engineering	km 616.7Lt - Collins Creek	PROJECT NO: 115 P-11
EQUIPMENT: CAT 320CL	Coordinates: 08N N7075670.0m E361309.0m	

SAMPLE TYPE     UNDISTURBED     DCPT     AUGER     BULK     SPT     CORE



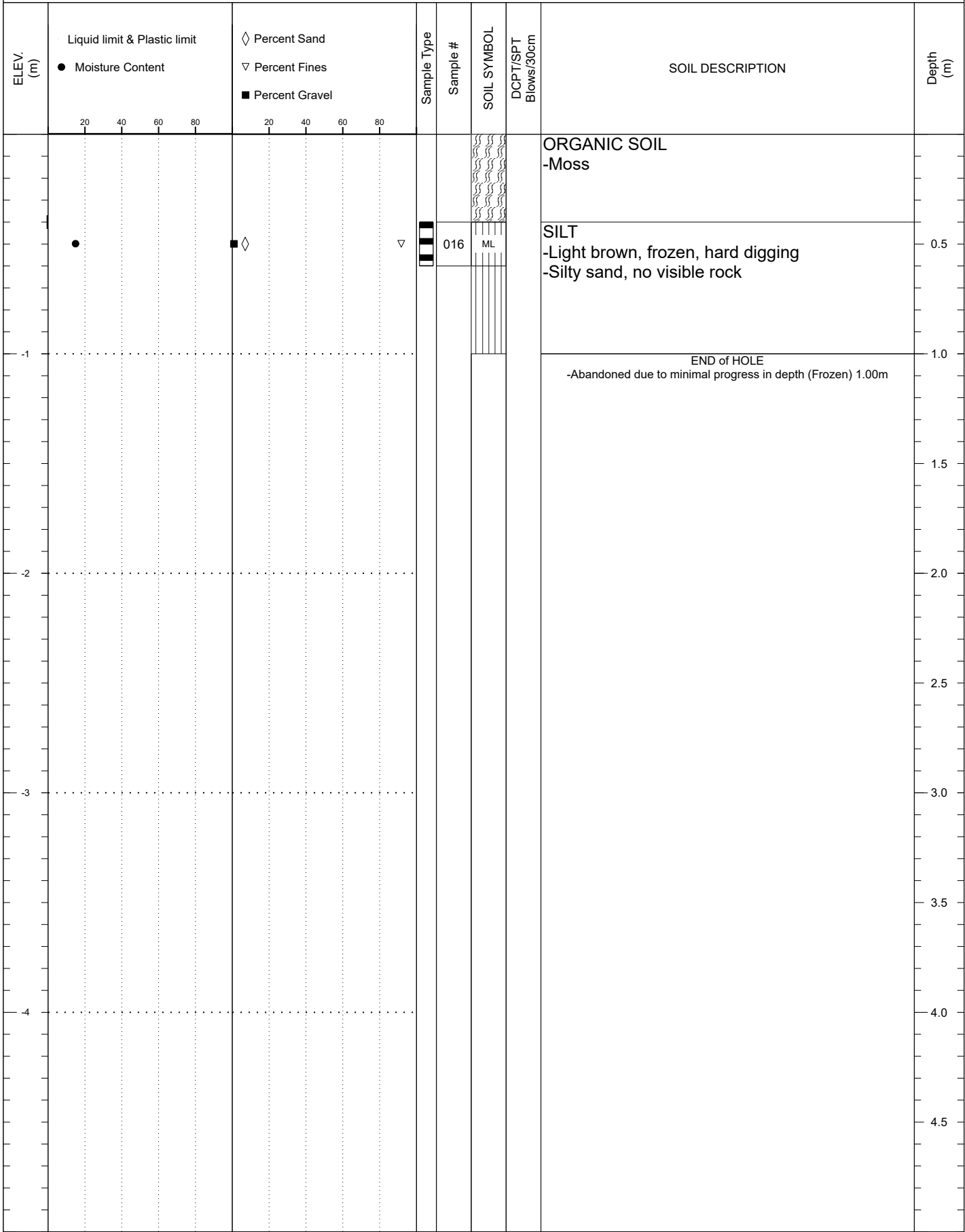
SUBSURFACE EXPLORATION AND TEST REPORT	02 Klondike Highway Pits	SOURCE/TP#: 914-5827
CLIENT: Transportation Engineering	km 616.7Lt - Collins Creek	PROJECT NO: 115 P-11
EQUIPMENT: CAT 320CL	Coordinates: 08N N7075733.0m E361273.0m	

SAMPLE TYPE     UNDISTURBED     DCPT     AUGER     BULK     SPT     CORE



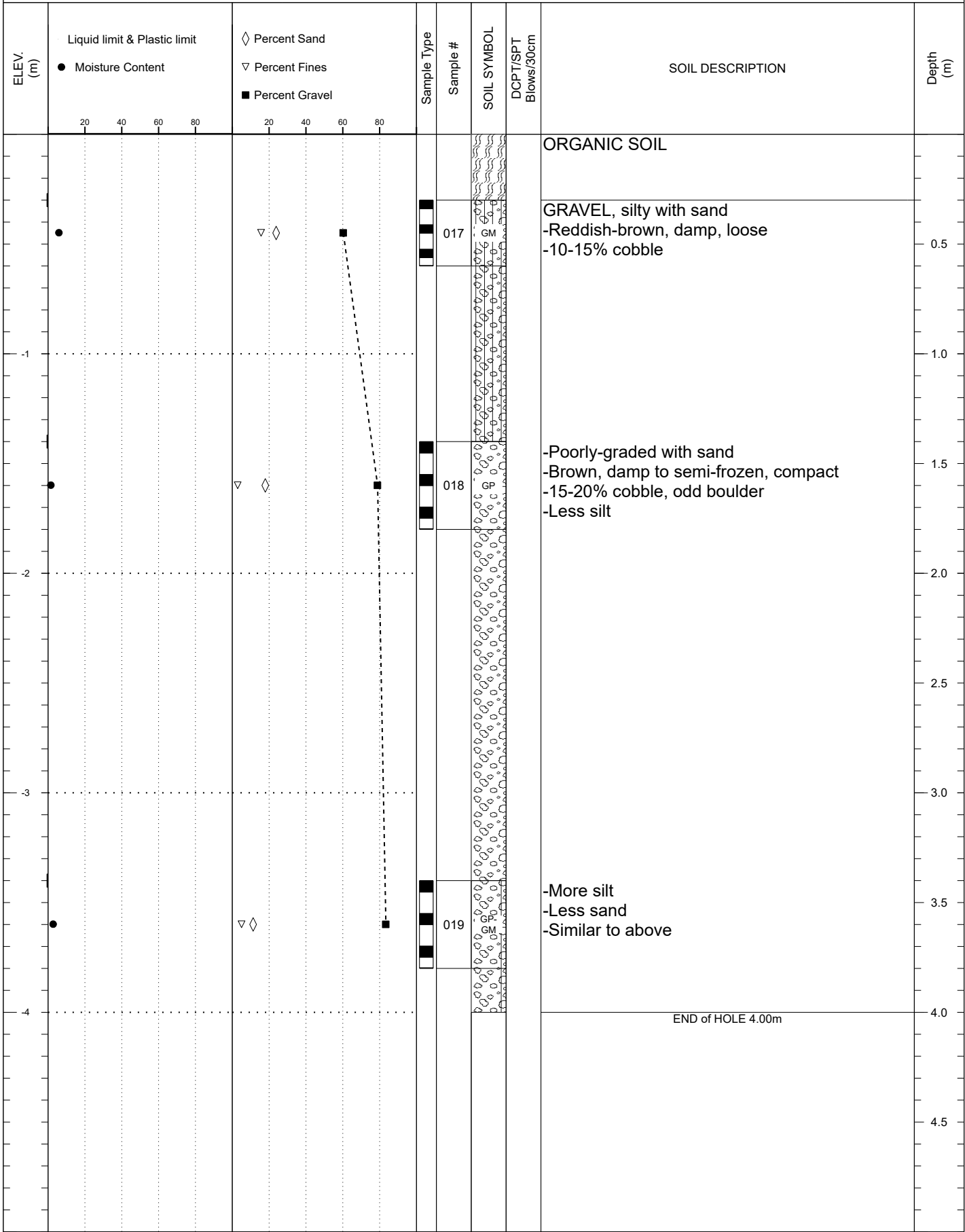
SUBSURFACE EXPLORATION AND TEST REPORT	02 Klondike Highway Pits	SOURCE/TP#: 914-5828
CLIENT: Transportation Engineering	km 616.7Lt - Collins Creek	PROJECT NO: 115 P-11
EQUIPMENT: CAT 320CL	Coordinates: 08N N7075695.0m E361204.0m	

SAMPLE TYPE     UNDISTURBED     DCPT     AUGER     BULK     SPT     CORE



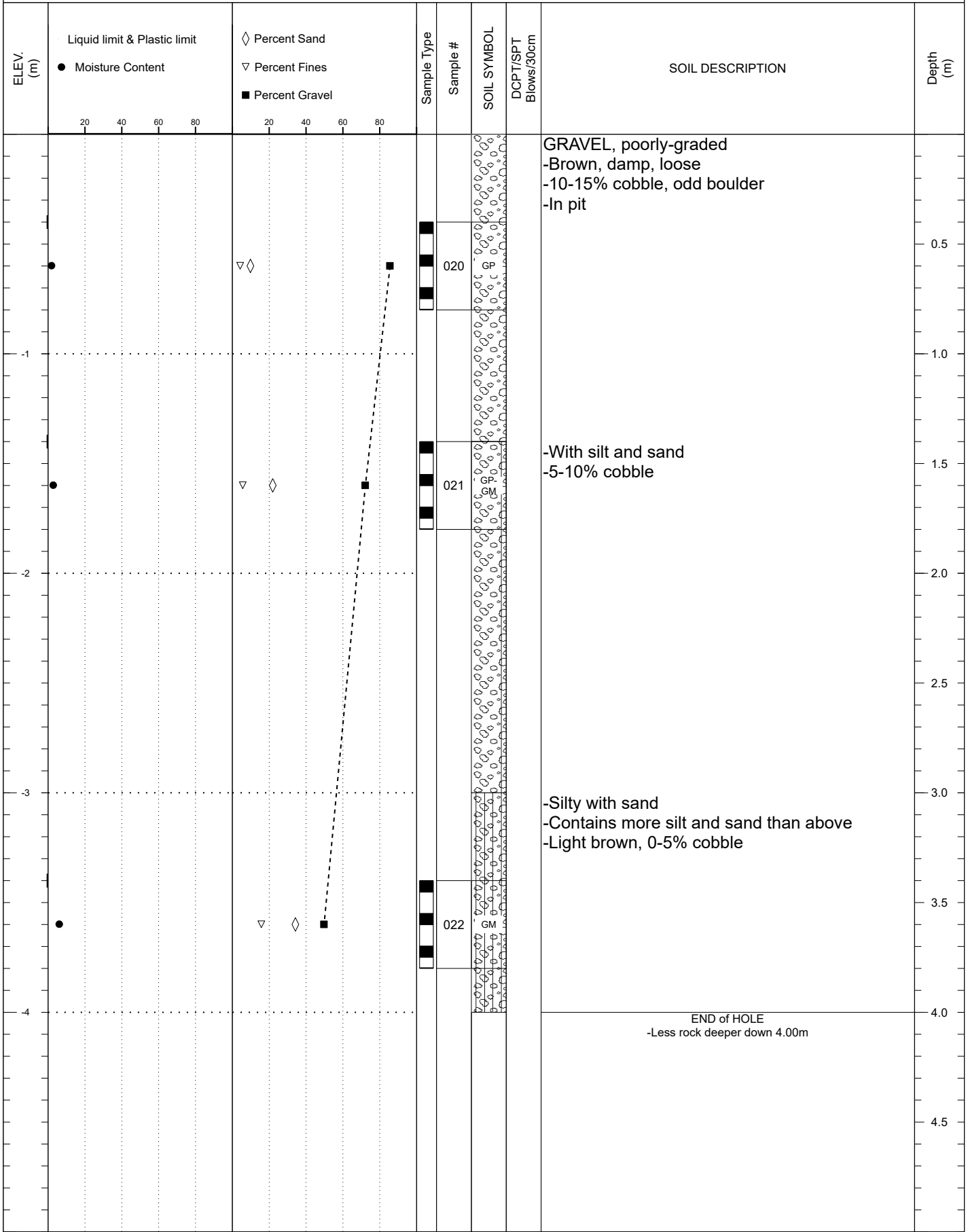
SUBSURFACE EXPLORATION AND TEST REPORT	02 Klondike Highway Pits	SOURCE/TP#: 914-5829
CLIENT: Transportation Engineering	km 616.7Lt - Collins Creek	PROJECT NO: 115 P-11
EQUIPMENT: CAT 320CL	Coordinates: 08N N7075565.0m E361390.0m	

SAMPLE TYPE     UNDISTURBED     DCPT     AUGER     BULK     SPT     CORE



SUBSURFACE EXPLORATION AND TEST REPORT	02 Klondike Highway Pits	SOURCE/TP#: 914-5830
CLIENT: Transportation Engineering	km 616.7Lt - Collins Creek	PROJECT NO: 115 P-11
EQUIPMENT: CAT 320CL	Coordinates: 08N N7075715.0m E361475.0m	

SAMPLE TYPE     UNDISTURBED     DCPT     AUGER     BULK     SPT     CORE



GRAIN SIZE ANALYSIS	Gravel Exploration Klondike Highway	SOURCE/TP#: 914-5822
McCrae Creek Contractor	Km 616.7 LHS	PROJECT NO: 552-202021-0204-06-1
CAT 320CL	Coordinates:Z08V N7075592m E361569m	ELEVATION: m

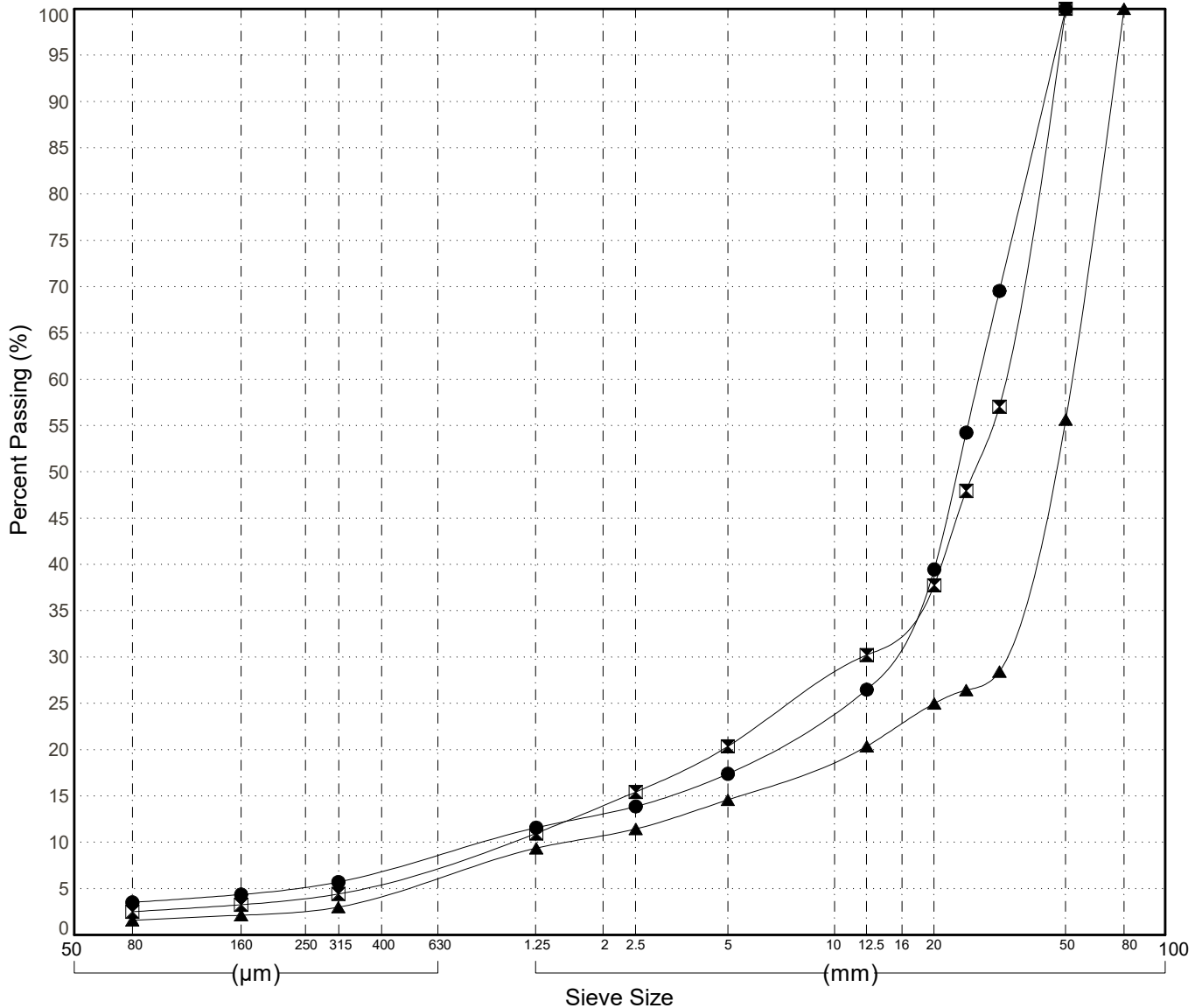
Master Revised June 2017

Field #	Lab #	Depth	Classification	%H2O	LL	PL	PI	Cc	Cu	D10
● 001	001	0.4 to 0.8	POORLY GRADED GRAVEL(GP)	2.8	NP	NP	NP	8.6	31.6	0.86
☒ 002	002	1.8 to 2.2	POORLY GRADED GRAVEL with SAND(GP)	2.3	NP	NP	NP	4.5	31.9	1.02
▲ 003	003	3.4 to 3.8	POORLY GRADED GRAVEL(GP)	1.7	NP	NP	NP	13.0	33.7	1.55

Field #	Lab #	%PASSING	Sieve Size (mm)													% Breakdown				
			100.0	80.0	50.0	25.0	20.0	12.5	10.0	5.0	2.0	0.850	0.400	0.250	0.160	0.080	Gravel	Sand	Silt	Clay
●	001	001	100.0	100.0	100.0	54.2	39.5	26.5	24.4	17.4	13.1	9.9	7.0	5.2	4.4	3.5	82.6	13.9	3.5	
☒	002	002	100.0	100.0	100.0	48.0	37.8	30.2	28.0	20.4	14.0	9.1	5.8	4.0	3.3	2.5	79.6	17.9	2.5	
▲	003	003	100.0	100.0	55.6	26.4	25.0	20.4	19.0	14.6	10.8	7.6	4.4	2.7	2.1	1.6	85.4	13.0	1.6	

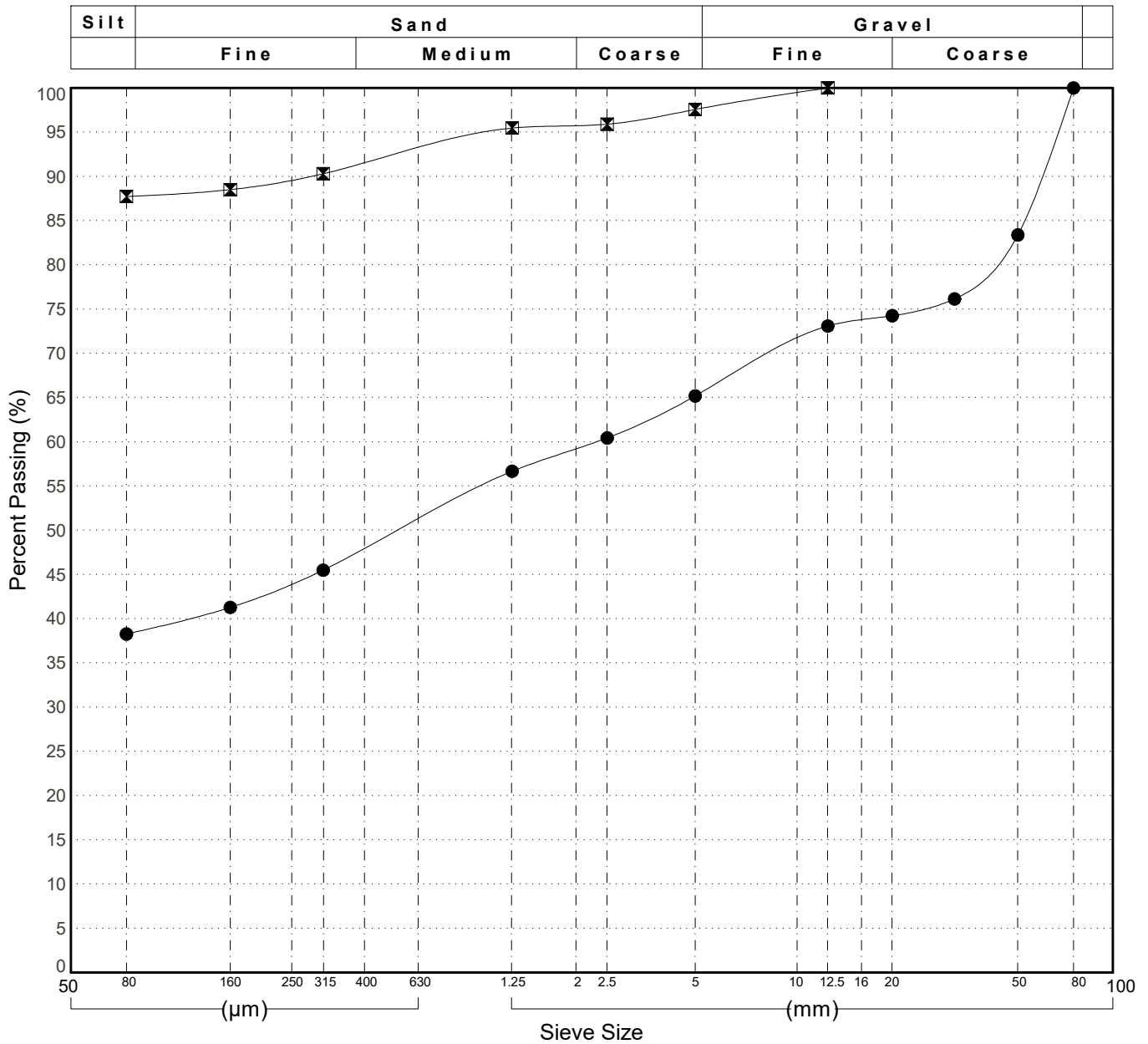
Silt	Sand			Gravel	
	Fine	Medium	Coarse	Fine	Coarse



GRAIN SIZE ANALYSIS	Gravel Exploration Klondike Highway	SOURCE/TP#: 914-5823
McCrae Creek Contractor	Km 616.7 LHS	PROJECT NO: 552-202021-0204-06-1
CAT 320CL	Coordinates:Z08V N7075473m E361422m	ELEVATION: m

Master Revised June 2017

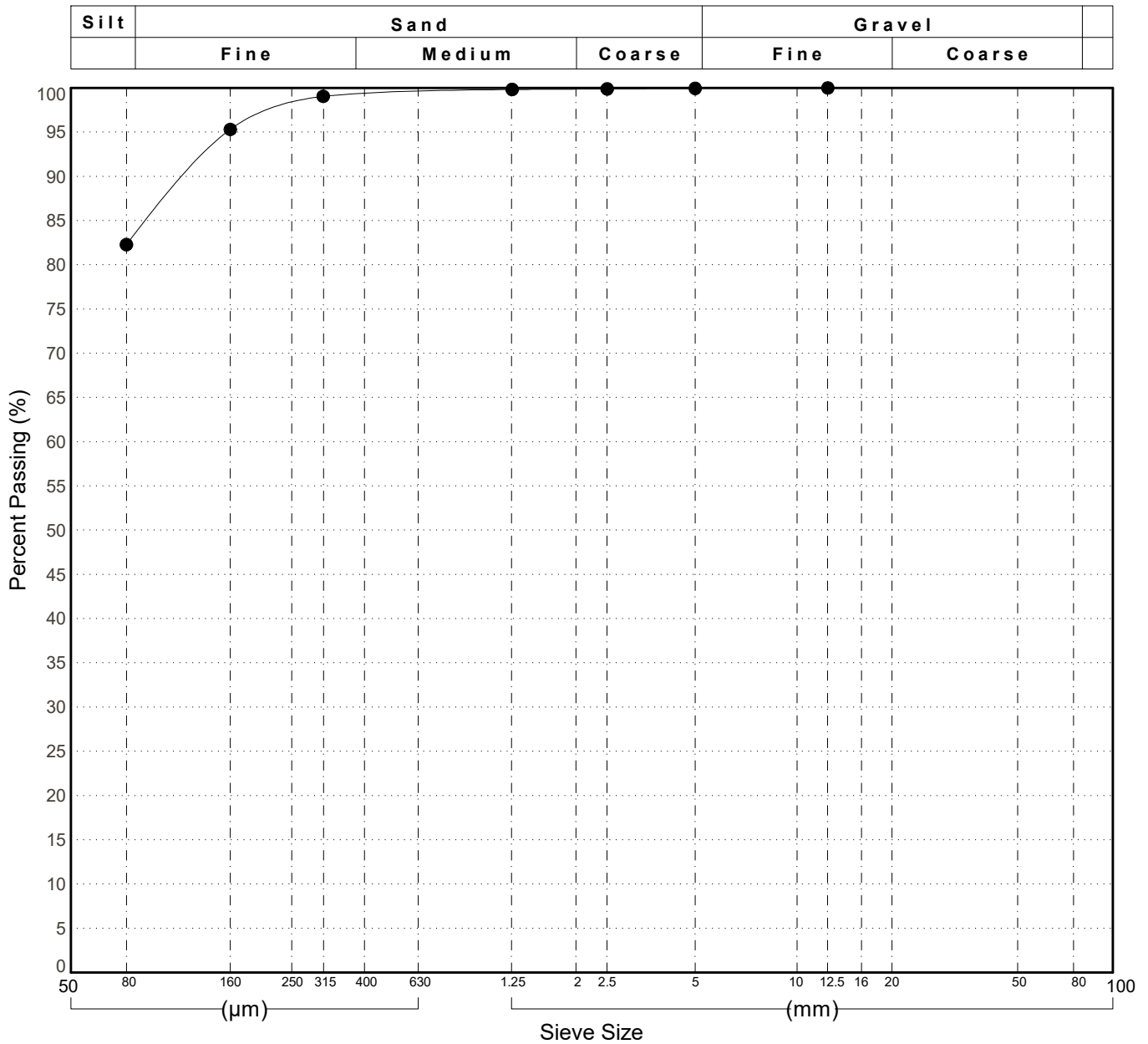
Field #	Lab #	Depth	Classification													%H2O	LL	PL	PI	Cc	Cu	D10
● 004	004	0.3 to 0.7	SILTY GRAVEL with SAND(GM)													13.0	NP	NP	NP			
☒ 005	005	1.2 to 1.6	SILT(ML)													22.2	NP	NP	NP			
Field #	Lab #	% PASSING	100.0	80.0	50.0	25.0	20.0	12.5	10.0	5.0	2.0	0.850	0.400	0.250	0.160	0.080	% Breakdown					
			Gravel	Sand	Silt	Clay																
● 004	004	100.0	100.0	83.4	75.2	74.2	73.1	71.3	65.2	59.2	53.5	47.9	44.0	41.3	38.3	34.8	26.9	38.3				
☒ 005	005	100.0	100.0	100.0	100.0	100.0	100.0	99.4	97.6	95.8	94.0	91.4	89.7	88.5	87.7	2.4	9.8	87.7				



GRAIN SIZE ANALYSIS	Gravel Exploration Klondike Highway	SOURCE/TP#: 914-5824
McCrae Creek Contractor	Km 616.7 LHS	PROJECT NO: 552-202021-0204-06-1
CAT 320CL	Coordinates:Z08V N7075505m E361317m	ELEVATION: m

Master Revised June 2017

Field #	Lab #	Depth	Classification													%H2O	LL	PL	PI	Cc	Cu	D10
● 006	006	0.3 to 0.6	SILT with SAND(ML)													17.0	NP	NP	NP			
Field #	Lab #		100.0	80.0	50.0	25.0	20.0	12.5	10.0	5.0	2.0	0.850	0.400	0.250	0.160	0.080	% Breakdown					
● 006	006	% PASSING	100.0	100.0	100.0	100.0	100.0	100.0	100.0	99.9	99.9	99.6	99.2	97.8	95.3	82.3	0.1	17.7	82.3			



GRAIN SIZE ANALYSIS	Gravel Exploration Klondike Highway	SOURCE/TP#: 914-5825
McCrae Creek Contractor	Km 616.7 LHS	PROJECT NO: 552-202021-0204-06-1
CAT 320CL	Coordinates:Z08V N7075611m E361352m	ELEVATION: m

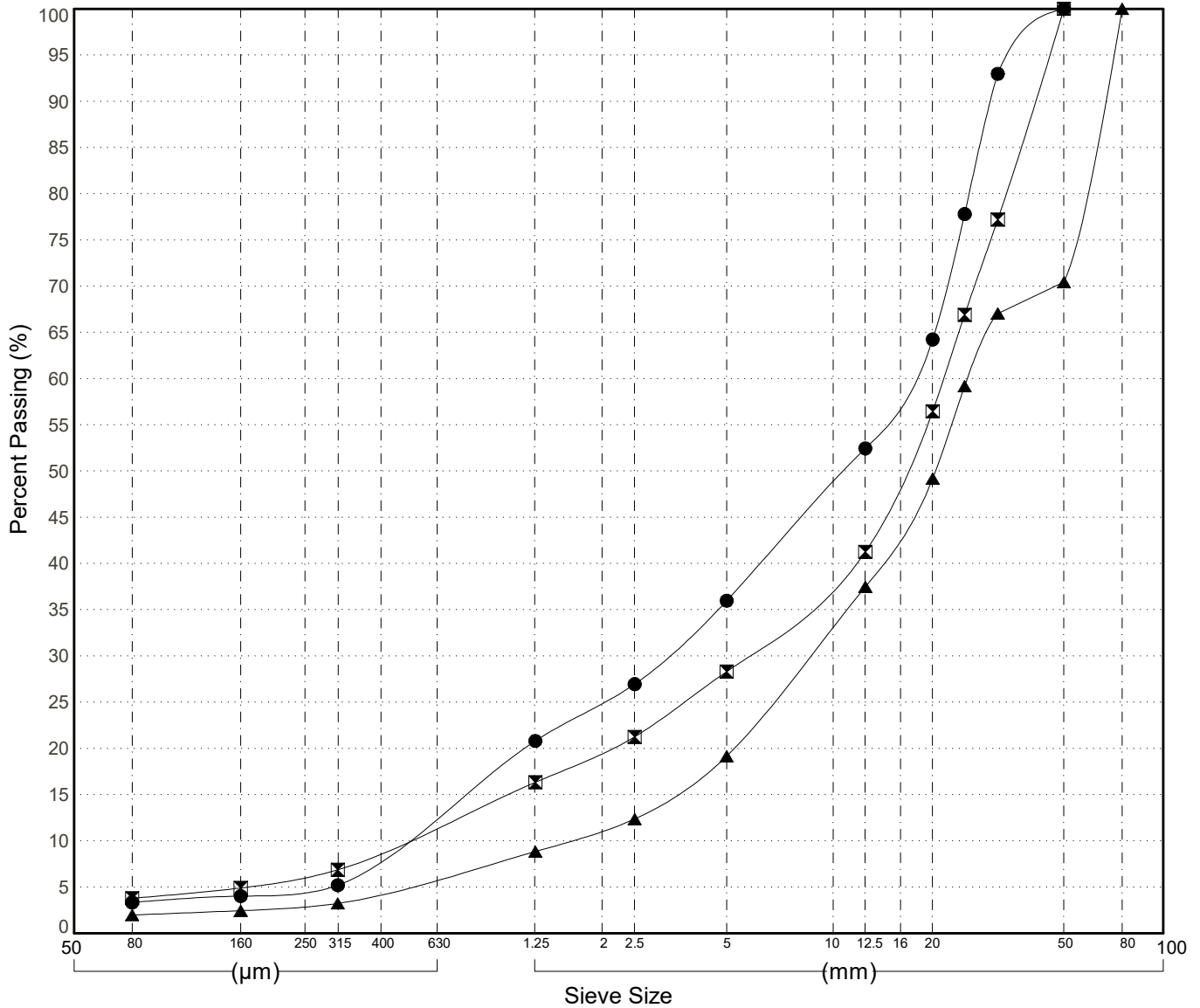
Master Revised June 2017

Field #	Lab #	Depth	Classification	%H2O	LL	PL	PI	Cc	Cu	D10
● 007	007	0.8 to 1.2	WELL-GRADED GRAVEL with SAND(GW)	2.5	NP	NP	NP	1.2	35.1	0.48
☒ 008	008	2.0 to 2.4	WELL-GRADED GRAVEL with SAND(GW)	2.2	NP	NP	NP	2.7	43.4	0.50
▲ 009	009	3.4 to 3.8	WELL-GRADED GRAVEL with SAND(GW)	1.6	NP	NP	NP	1.8	16.3	1.57

Field #	Lab #	% PASSING														% Breakdown				
			100.0	80.0	50.0	25.0	20.0	12.5	10.0	5.0	2.0	0.850	0.400	0.250	0.160	0.080	Gravel	Sand	Silt	Clay
●	007	007	100.0	100.0	100.0	77.8	64.2	52.5	48.7	36.0	25.0	16.4	8.6	4.8	4.0	3.3	64.0	32.6		3.3
☒	008	008	100.0	100.0	100.0	66.9	56.5	41.3	38.3	28.3	19.7	13.7	8.9	6.2	4.9	3.8	71.7	24.5		3.8
▲	009	009	100.0	100.0	70.4	59.2	49.2	37.5	33.3	19.2	11.2	7.3	4.5	3.0	2.4	2.0	80.8	17.2		2.0

Silt	Sand			Gravel	
	Fine	Medium	Coarse	Fine	Coarse



GRAIN SIZE ANALYSIS	Gravel Exploration Klondike Highway	SOURCE/TP#: 914-5826
McCrae Creek Contractor	Km 616.7 LHS	PROJECT NO: 552-202021-0204-06-1
CAT 320CL	Coordinates:Z08V N7075670m E361309m	ELEVATION: m

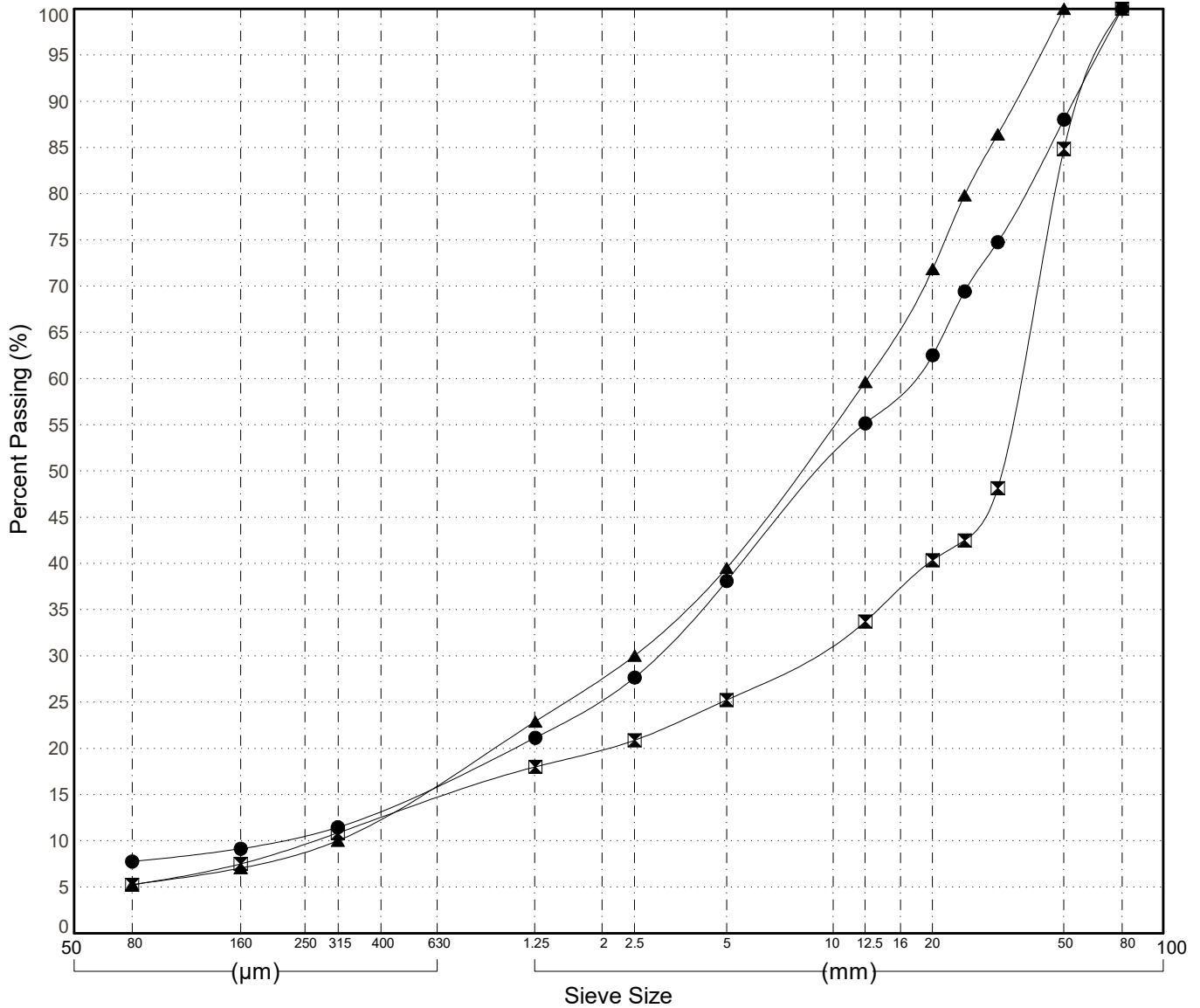
Master Revised June 2017

Field #	Lab #	Depth	Classification	%H2O	LL	PL	PI	Cc	Cu	D10
● 010	010	0.4 to 0.8	WELL-GRADED GRAVEL with SILT and SAND(GW-GM)	4.3	NP	NP	NP	2.4	82.9	0.21
☒ 011	011	1.4 to 1.8	POORLY GRADED GRAVEL with SILT and SAND(GP-GM)	2.4	NP	NP	NP	6.9	138.1	0.26
▲ 012	012	3.4 to 3.8	WELL-GRADED GRAVEL with SILT and SAND(GW-GM)	4.5	NP	NP	NP	1.6	40.4	0.31

Field #	Lab #	%PASSING														% Breakdown				
			100.0	80.0	50.0	25.0	20.0	12.5	10.0	5.0	2.0	0.850	0.400	0.250	0.160	0.080	Gravel	Sand	Silt	Clay
●	010	010	100.0	100.0	88.0	69.4	62.5	55.2	51.2	38.1	25.6	18.4	13.6	10.7	9.1	7.8	61.9	30.3	7.8	
☒	011	011	100.0	100.0	84.8	42.5	40.4	33.7	31.8	25.2	20.0	16.0	12.4	9.7	7.5	5.2	74.8	20.0	5.2	
▲	012	012	100.0	100.0	100.0	79.9	71.9	59.7	55.0	39.5	27.7	19.3	12.8	9.0	7.0	5.3	60.5	34.2	5.3	

Silt	Sand			Gravel	
	Fine	Medium	Coarse	Fine	Coarse



GRAIN SIZE ANALYSIS	Gravel Exploration Klondike Highway	SOURCE/TP#: 914-5827
McCrae Creek Contractor	Km 616.7 LHS	PROJECT NO: 552-202021-0204-06-1
CAT 320CL	Coordinates:Z08V N7075733m E361273m	ELEVATION: m

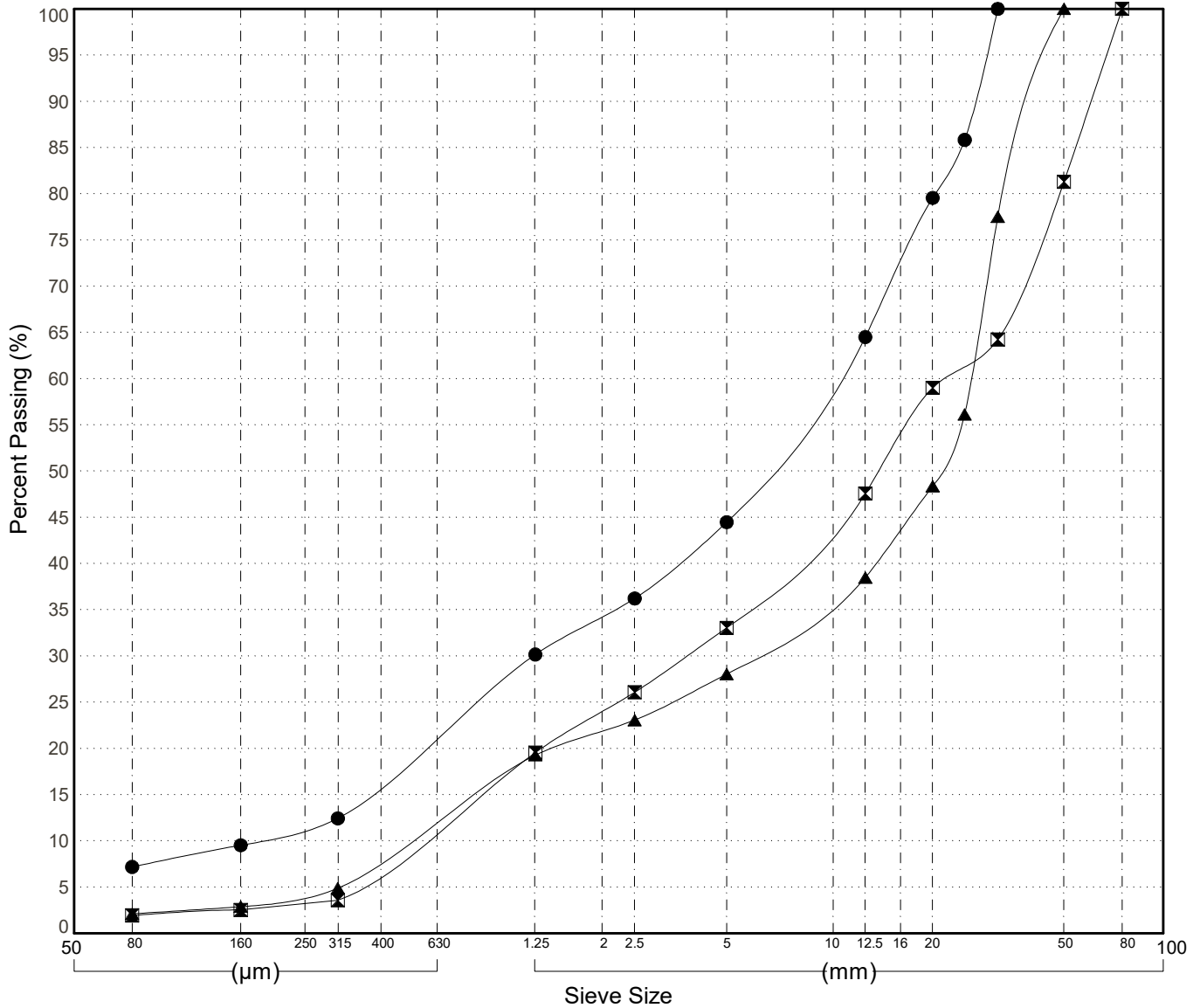
Master Revised June 2017

Field #	Lab #	Depth	Classification	%H2O	LL	PL	PI	Cc	Cu	D10
● 013	013	0.3 to 0.6	POORLY GRADED GRAVEL with SILT and SAND(GP-GM)	3.8	NP	NP	NP	0.8	56.3	0.18
☒ 014	014	2.0 to 2.4	WELL-GRADED GRAVEL with SAND(GW)	2.0	NP	NP	NP	1.1	39.8	0.55
▲ 015	015	3.4 to 3.8	WELL-GRADED GRAVEL with SAND(GW)	2.2	NP	NP	NP	2.4	50.6	0.51

Field #	Lab #	% PASSING	Sieve Size (mm)													% Breakdown				
			100.0	80.0	50.0	25.0	20.0	12.5	10.0	5.0	2.0	0.850	0.400	0.250	0.160	0.080	Gravel	Sand	Silt	Clay
●	013	013	100.0	100.0	100.0	85.8	79.6	64.5	59.9	44.5	34.3	25.2	16.3	11.4	9.5	7.2	55.5	37.3	7.2	
☒	014	014	100.0	100.0	81.3	61.6	59.0	47.6	44.2	33.0	24.0	15.1	7.0	3.2	2.5	1.9	67.0	31.1	1.9	
▲	015	015	100.0	100.0	100.0	56.1	48.4	38.5	36.1	28.0	21.8	15.2	8.0	4.2	2.9	2.1	72.0	25.9	2.1	

Silt	Sand			Gravel	
	Fine	Medium	Coarse	Fine	Coarse

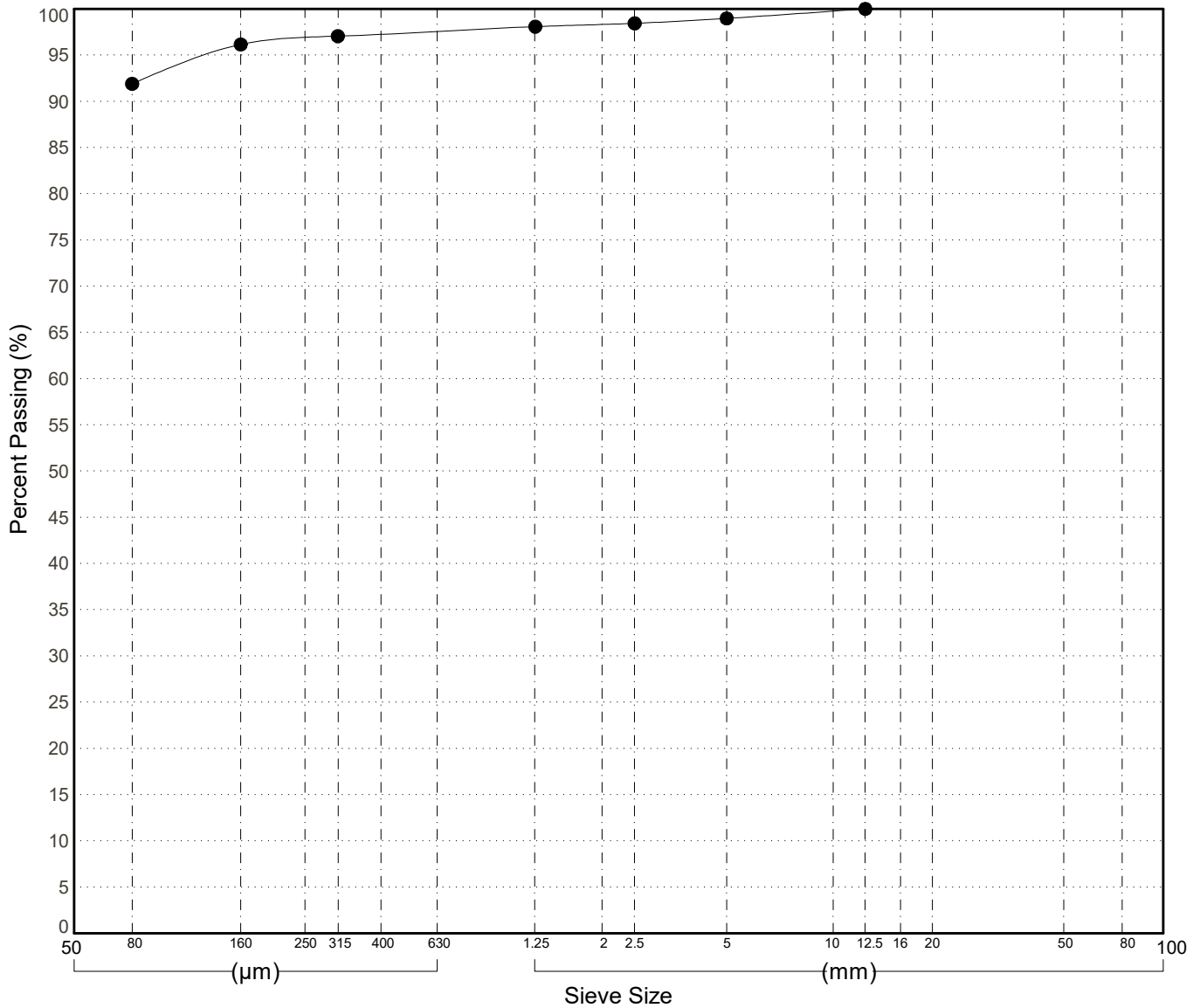


GRAIN SIZE ANALYSIS	Gravel Exploration Klondike Highway	SOURCE/TP#: 914-5828
McCrae Creek Contractor	Km 616.7 LHS	PROJECT NO: 552-202021-0204-06-1
CAT 320CL	Coordinates:Z08V N7075695m E361204m	ELEVATION: m

Master Revised June 2017

Field #	Lab #	Depth	Classification													%H2O	LL	PL	PI	Cc	Cu	D10
● 016	016	0.4 to 0.6	SILT(ML)													15.1	NP	NP	NP			
Field #	Lab #	100.0	80.0	50.0	25.0	20.0	12.5	10.0	5.0	2.0	0.850	0.400	0.250	0.160	0.080	% Breakdown						
● 016	016	100.0	100.0	100.0	100.0	100.0	100.0	99.8	99.0	98.3	97.8	97.3	96.7	96.2	91.9	Gravel	Sand	Silt	Clay			
																1.0	7.1		91.9			

Silt	Sand			Gravel	
	Fine	Medium	Coarse	Fine	Coarse



GRAIN SIZE ANALYSIS	Gravel Exploration Klondike Highway	SOURCE/TP#: 914-5829
McCrae Creek Contractor	Km 616.7 LHS	PROJECT NO: 552-202021-0204-06-1
CAT 320CL	Coordinates:Z08V N7075565m E361390m	ELEVATION: m

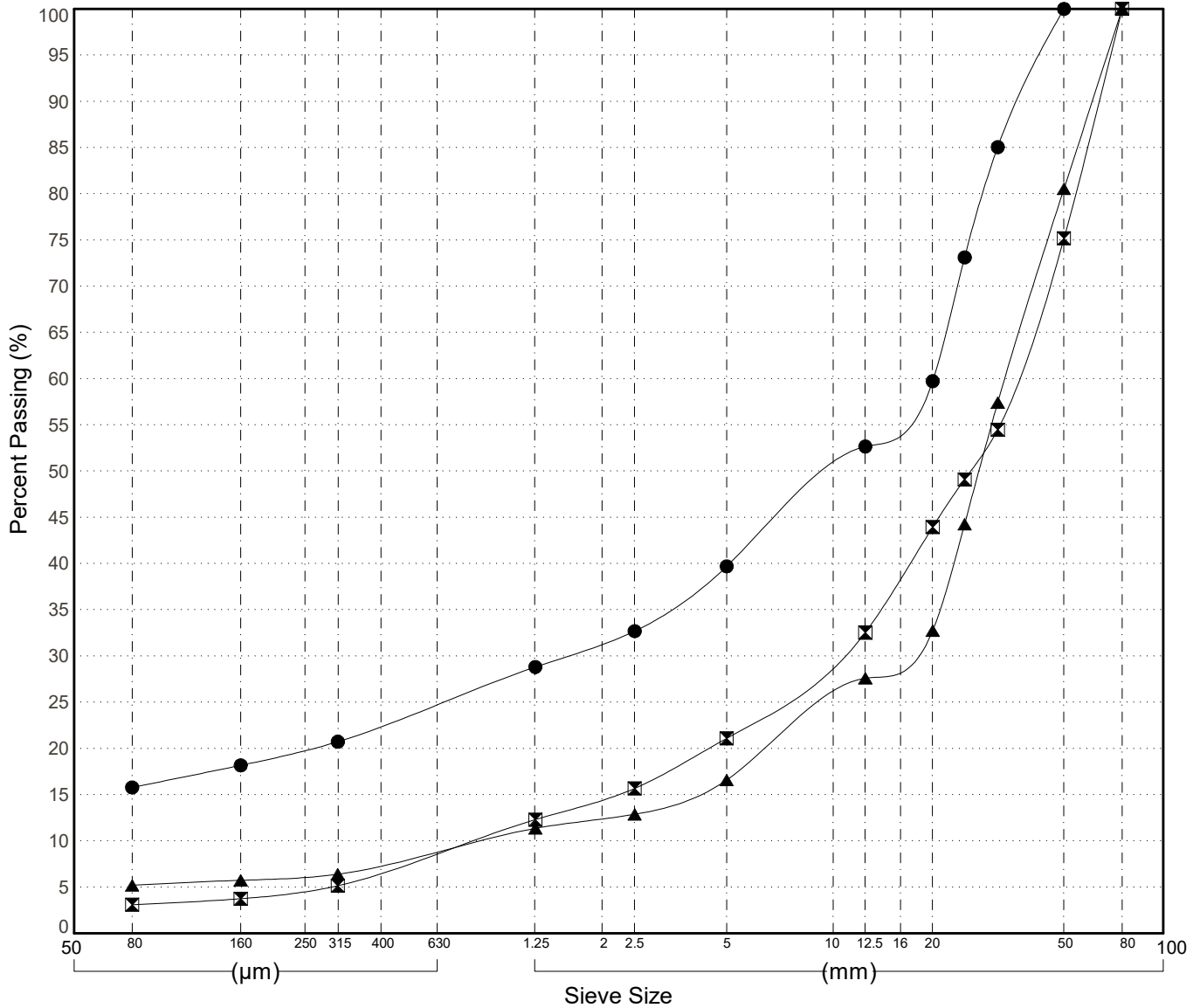
Master Revised June 2017

Field #	Lab #	Depth	Classification	%H2O	LL	PL	PI	Cc	Cu	D10
● 017	017	0.3 to 0.6	SILTY GRAVEL with SAND(GM)	6.1	NP	NP	NP			
☒ 018	018	1.4 to 1.8	POORLY GRADED GRAVEL with SAND(GP)	1.7	NP	NP	NP	3.6	44.4	0.80
▲ 019	019	3.4 to 3.8	POORLY GRADED GRAVEL with SILT(GP-GM)	2.9	NP	NP	NP	8.5	38.6	0.86

Field #	Lab #	%PASSING	Sieve Size (mm)													% Breakdown				
			100.0	80.0	50.0	25.0	20.0	12.5	10.0	5.0	2.0	0.850	0.400	0.250	0.160	0.080	Gravel	Sand	Silt	Clay
●	017	017	100.0	100.0	100.0	73.1	59.7	52.7	49.7	39.7	31.4	26.5	22.5	19.9	18.2	15.8	60.3	23.9	15.8	
☒	018	018	100.0	100.0	75.2	49.1	43.9	32.5	29.9	21.1	14.6	10.3	6.7	4.7	3.7	3.1	78.9	18.0	3.1	
▲	019	019	100.0	100.0	80.5	44.3	32.7	27.6	25.1	16.6	12.4	10.0	7.5	6.2	5.7	5.2	83.4	11.4	5.2	

Silt	Sand			Gravel	
	Fine	Medium	Coarse	Fine	Coarse



GRAIN SIZE ANALYSIS	Gravel Exploration Klondike Highway	SOURCE/TP#: 914-5830
McCrae Creek Contractor	Km 616.7 LHS	PROJECT NO: 552-202021-0204-06-1
CAT 320CL	Coordinates:Z08V N7075715m E361475m	ELEVATION: m

Master Revised June 2017

Field #	Lab #	Depth	Classification	%H2O	LL	PL	PI	Cc	Cu	D10
● 020	020	0.4 to 0.8	POORLY GRADED GRAVEL(GP)	2.0	NP	NP	NP	7.2	30.8	0.97
☒ 021	021	1.4 to 1.8	POORLY GRADED GRAVEL with SILT and SAND(GP-GM)	3.0	NP	NP	NP	3.6	116.6	0.27
▲ 022	022	3.4 to 3.8	SILTY GRAVEL with SAND(GM)	6.2	NP	NP	NP			

Field #	Lab #	% PASSING	Sieve Size (mm)													% Breakdown				
			100.0	80.0	50.0	25.0	20.0	12.5	10.0	5.0	2.0	0.850	0.400	0.250	0.160	0.080	Gravel	Sand	Silt	Clay
●	020	020	100.0	100.0	85.2	49.4	40.5	25.6	23.0	14.4	11.5	9.7	8.0	6.8	5.9	4.4	85.6	9.9	4.4	
☒	021	021	100.0	100.0	100.0	50.9	45.7	41.1	38.0	27.8	20.6	16.4	12.3	9.7	8.1	5.8	72.2	22.0	5.8	
▲	022	022	100.0	100.0	100.0	66.2	61.6	54.3	53.3	50.2	48.7	46.1	42.3	37.0	29.9	15.9	49.8	34.3	15.9	

Silt	Sand			Gravel	
	Fine	Medium	Coarse	Fine	Coarse

