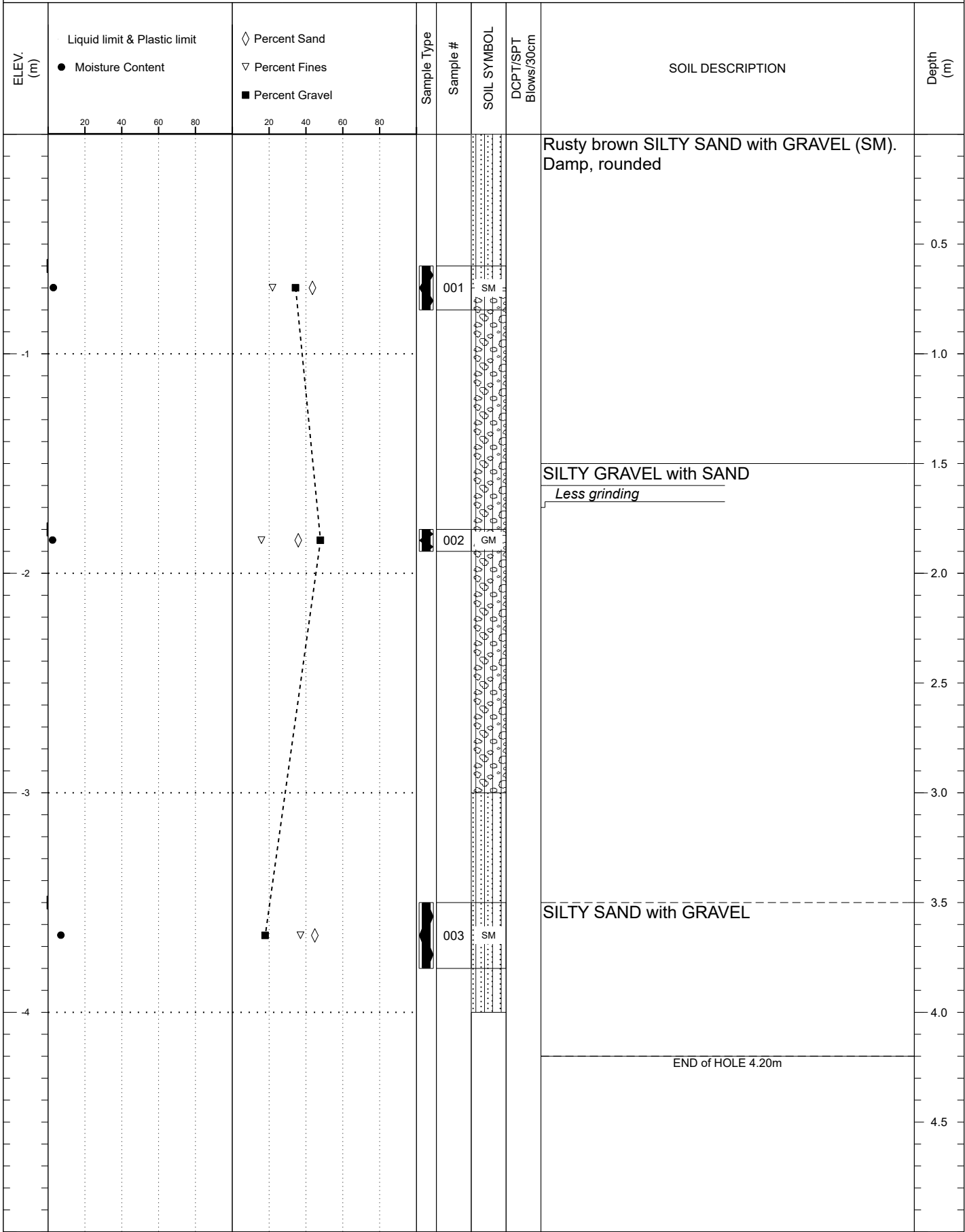


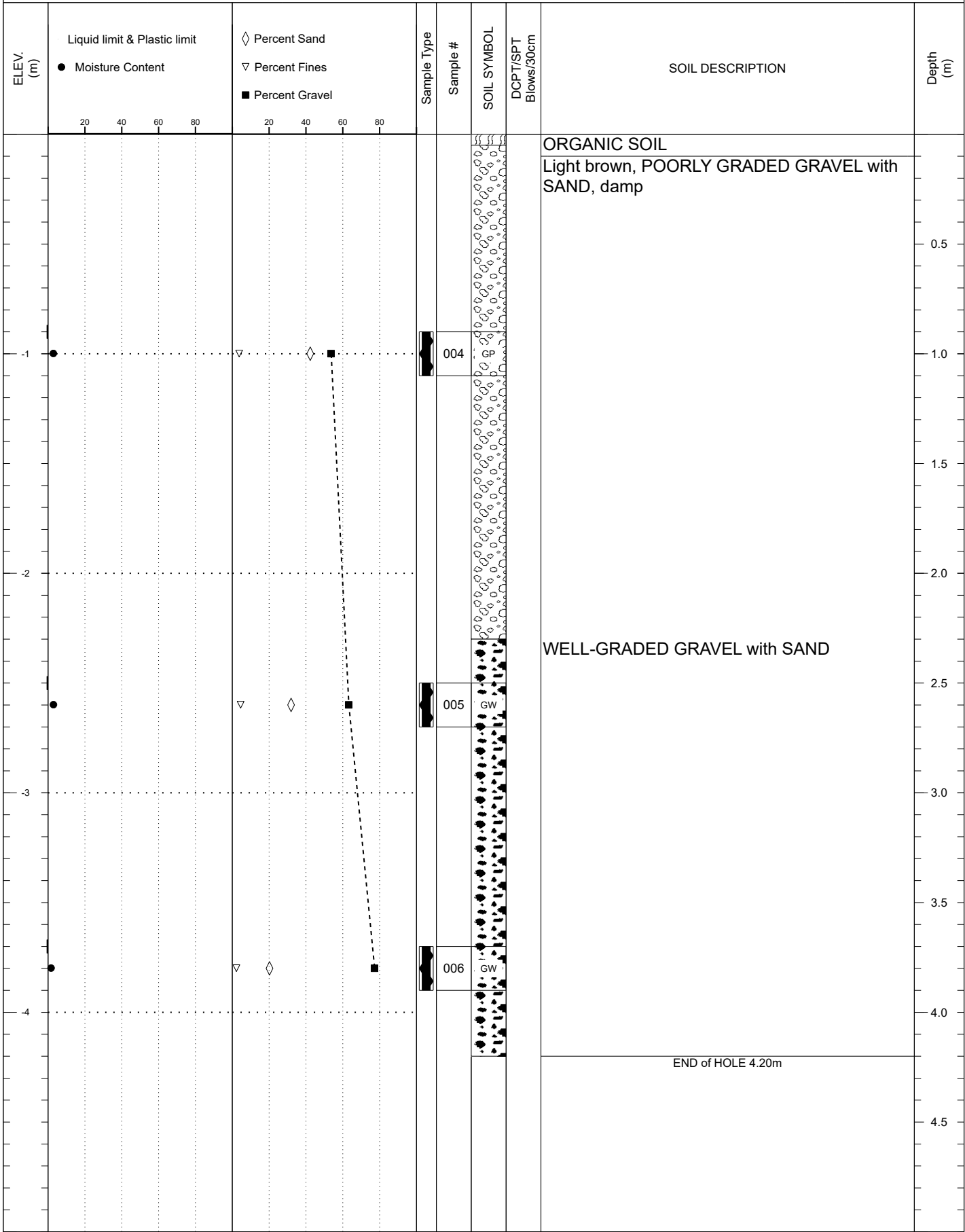
SUBSURFACE EXPLORATION AND TEST REPORT	Silver Trail CL	SOURCE/TP#: 919-6631
CLIENT: Transportation Engineering	Silver Trail #11	PROJECT NO: 552-202111CL
EQUIPMENT: Auger	Coordinates: 08N N7045085.0m E441049.0m	

SAMPLE TYPE UNDISTURBED DCPT AUGER BULK SPT CORE



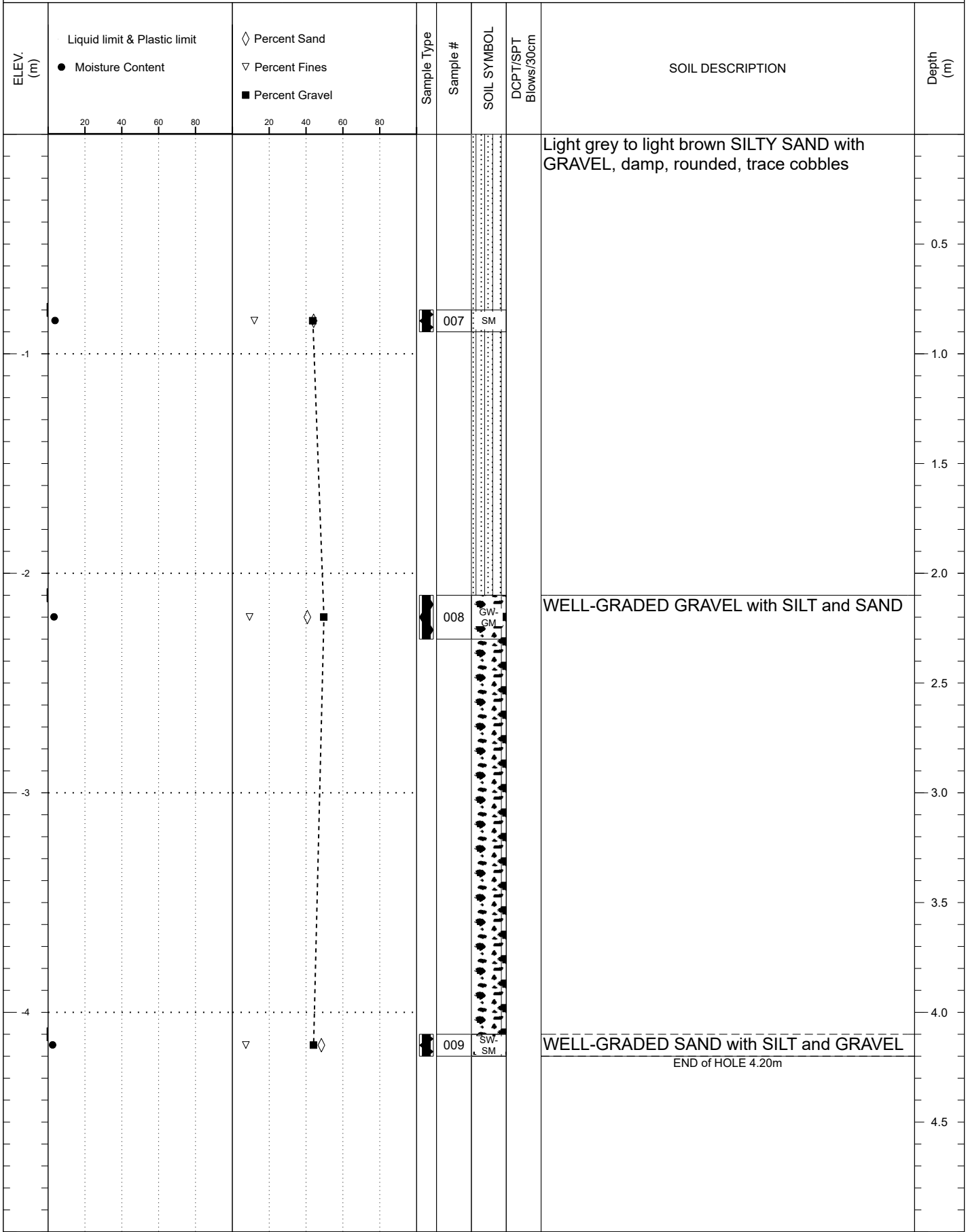
SUBSURFACE EXPLORATION AND TEST REPORT	Silver Trail CL	SOURCE/TP#: 919-6632
CLIENT: Transportation Engineering	Silver Trail #11	PROJECT NO: 552-202111CL
EQUIPMENT: Auger	Coordinates: 08N N7045741.0m E441696.0m	

SAMPLE TYPE UNDISTURBED DCPT AUGER BULK SPT CORE



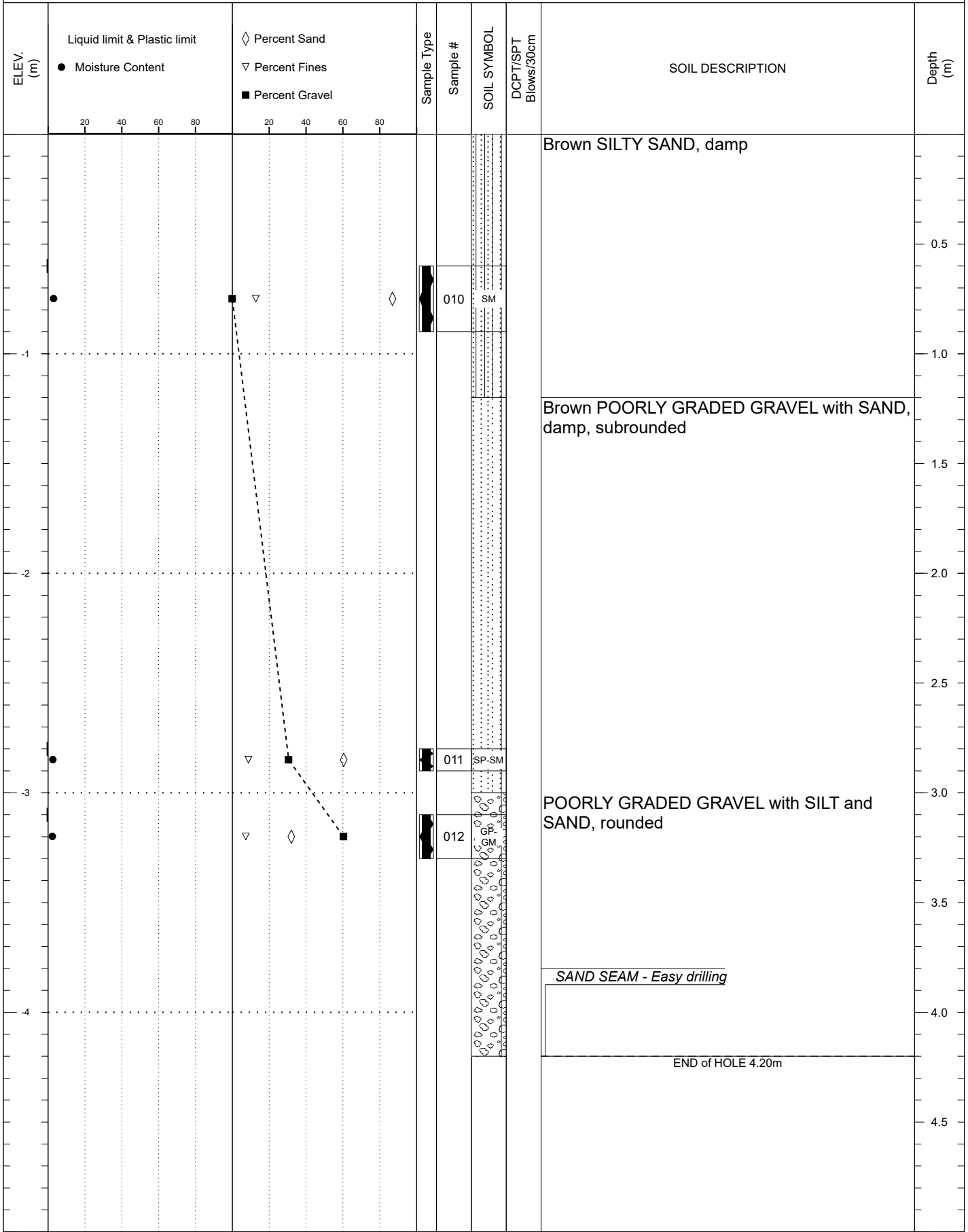
SUBSURFACE EXPLORATION AND TEST REPORT	Silver Trail CL	SOURCE/TP#: 919-6633
CLIENT: Transportation Engineering	Silver Trail #11	PROJECT NO: 552-202111CL
EQUIPMENT: Auger	Coordinates: 08N N7045683.0m E441654.0m	

SAMPLE TYPE UNDISTURBED DCPT AUGER BULK SPT CORE



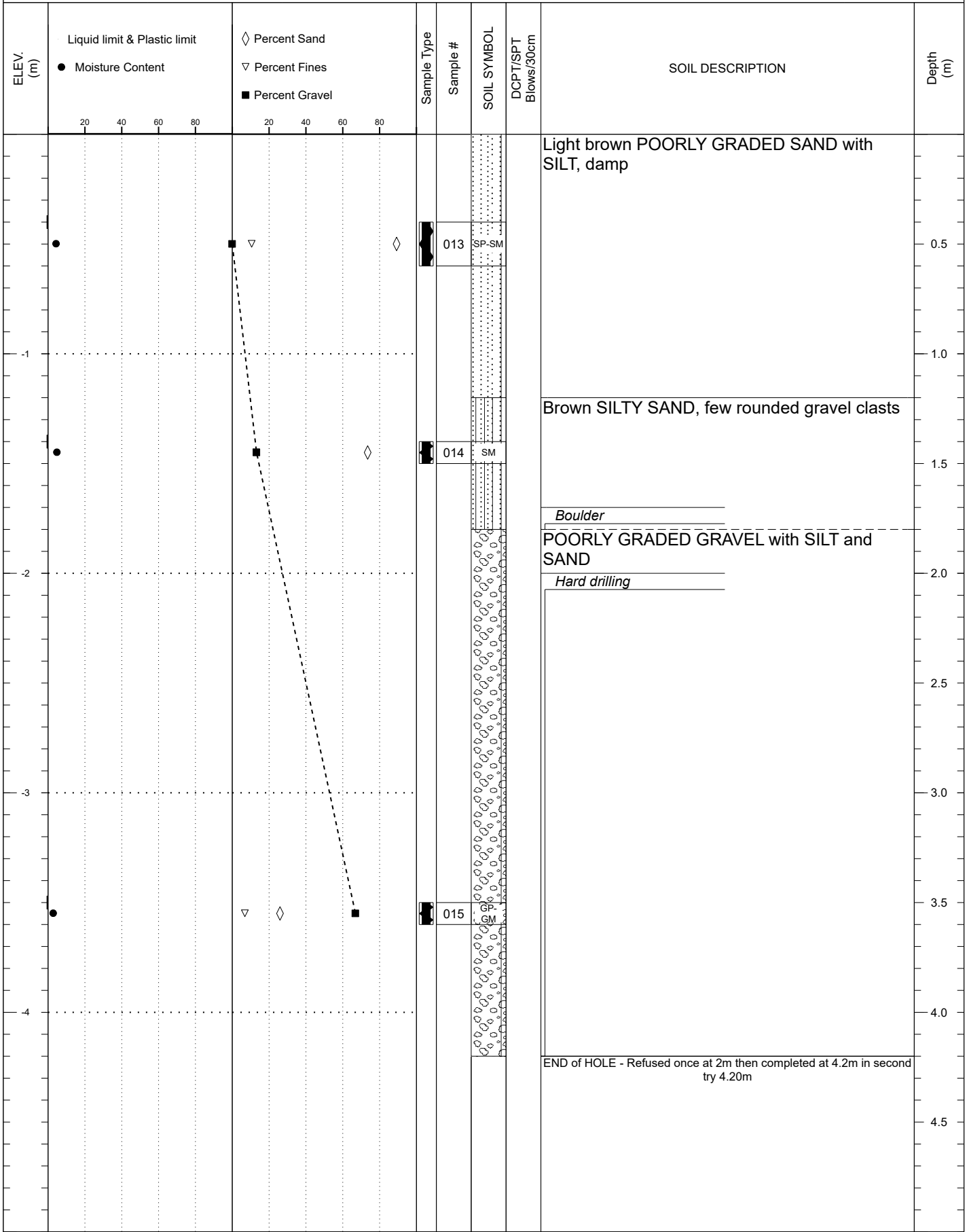
SUBSURFACE EXPLORATION AND TEST REPORT	Silver Trail CL	SOURCE/TP#: 919-6634
CLIENT: Transportation Engineering	Silver Trail #11	PROJECT NO: 552-202111CL
EQUIPMENT: Auger	Coordinates: 08N N7045640.0m E441563.0m	

SAMPLE TYPE UNDISTURBED DCPT AUGER BULK SPT CORE



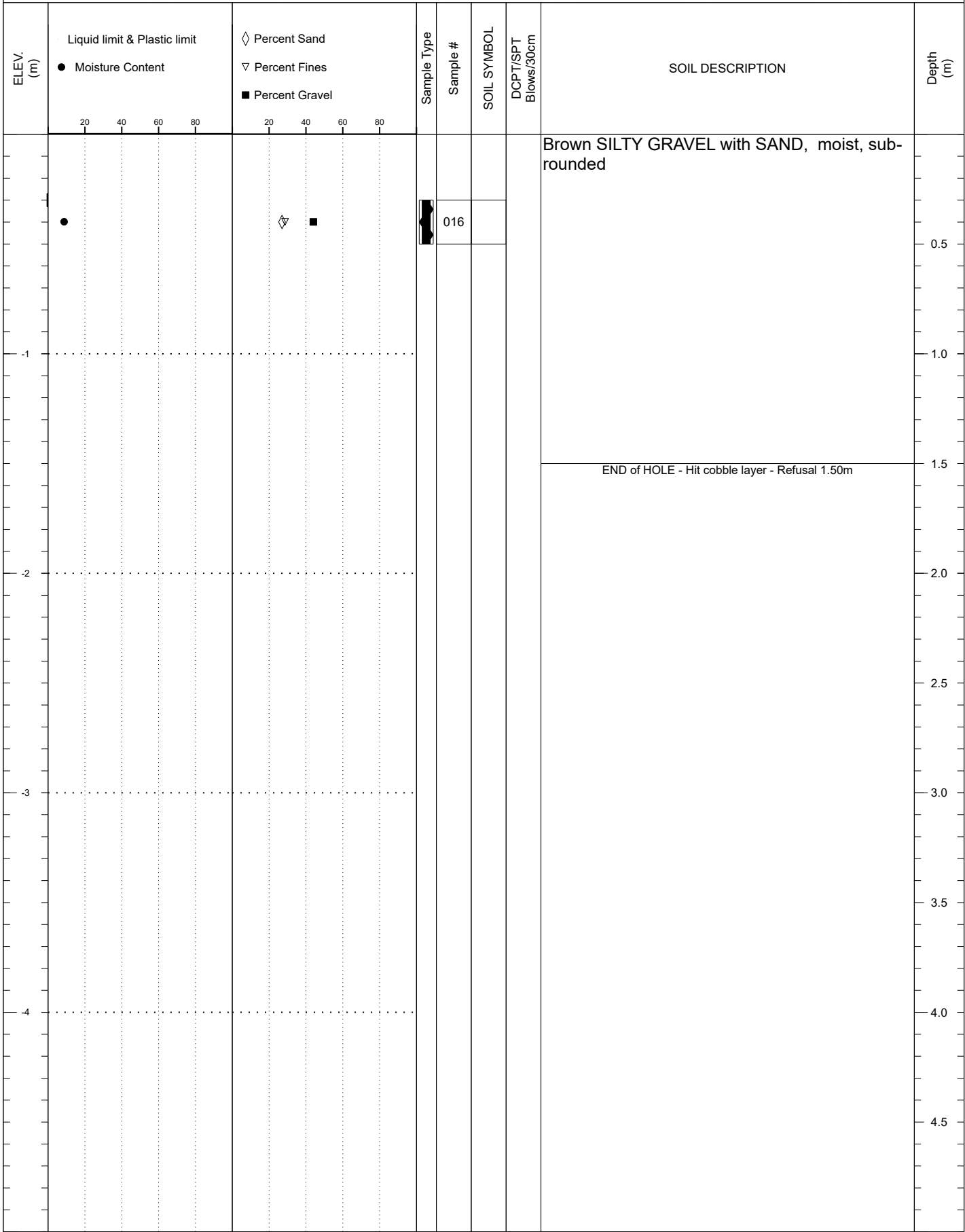
SUBSURFACE EXPLORATION AND TEST REPORT	Silver Trail CL	SOURCE/TP#: 919-6635
CLIENT: Transportation Engineering	Silver Trail #11	PROJECT NO: 552-202111CL
EQUIPMENT: Auger	Coordinates: 08N N7045539.0m E441569.0m	

SAMPLE TYPE UNDISTURBED DCPT AUGER BULK SPT CORE



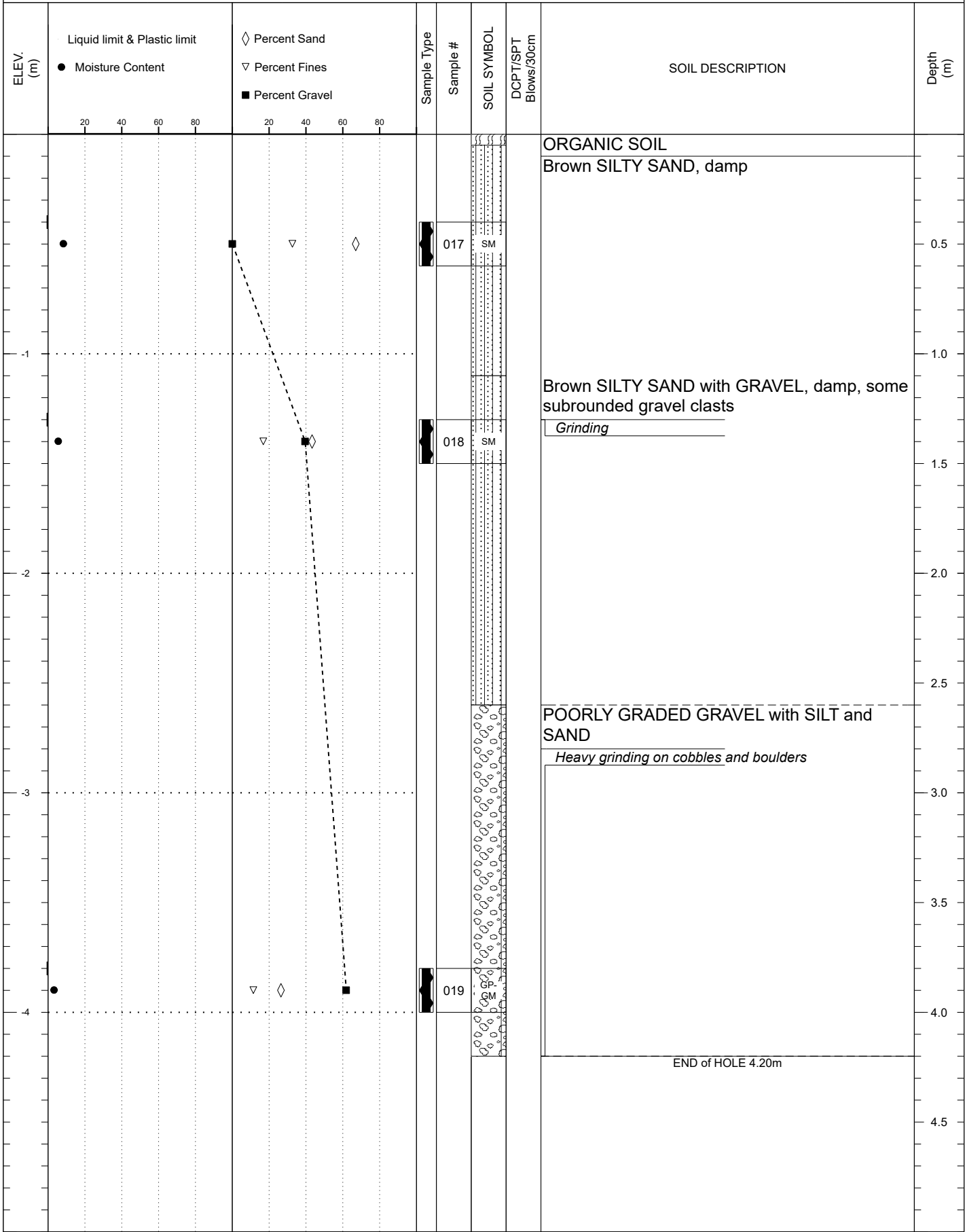
SUBSURFACE EXPLORATION AND TEST REPORT	Silver Trail CL	SOURCE/TP#: 919-6636
CLIENT: Transportation Engineering	Silver Trail #11	PROJECT NO: 552-202111CL
EQUIPMENT: Auger	Coordinates: 08N N7045858.0m E441852.0m	

SAMPLE TYPE UNDISTURBED DCPT AUGER BULK SPT CORE



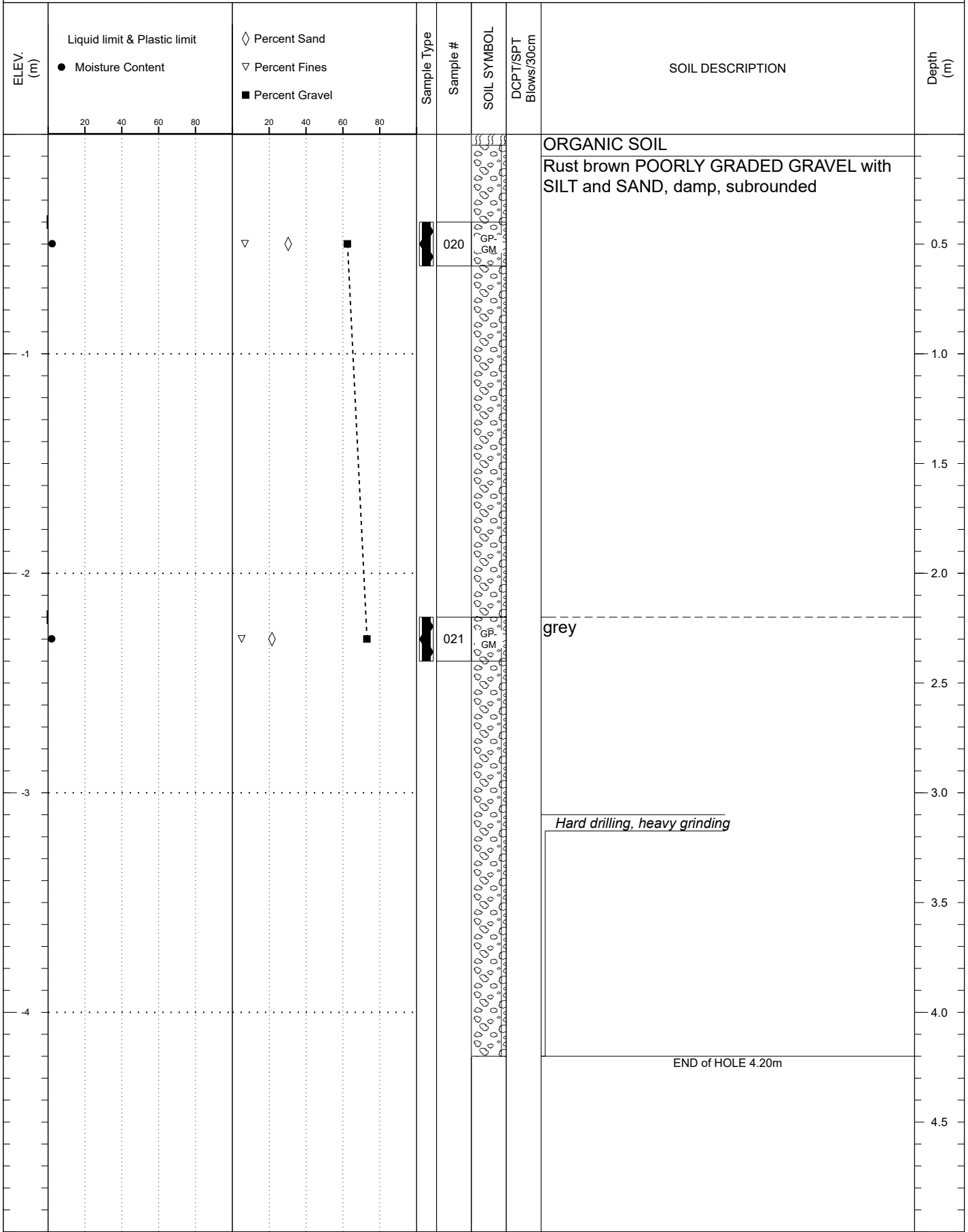
SUBSURFACE EXPLORATION AND TEST REPORT	Silver Trail CL	SOURCE/TP#: 919-6637
CLIENT: Transportation Engineering	Silver Trail #11	PROJECT NO: 552-202111CL
EQUIPMENT: Auger	Coordinates: 08N N7045879.0m E442016.0m	

SAMPLE TYPE UNDISTURBED DCPT AUGER BULK SPT CORE



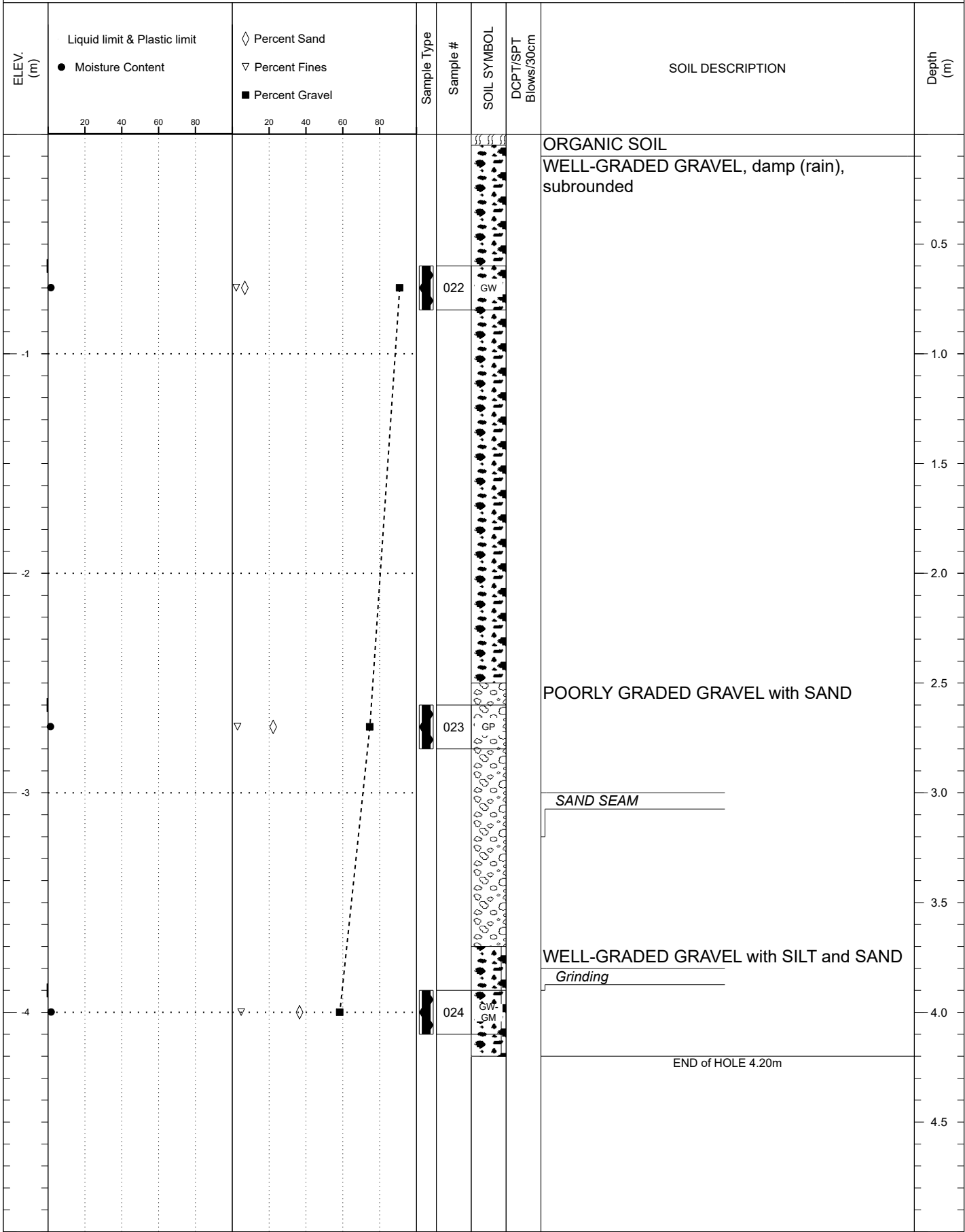
SUBSURFACE EXPLORATION AND TEST REPORT	Silver Trail CL	SOURCE/TP#: 919-6638
CLIENT: Transportation Engineering	Silver Trail #11	PROJECT NO: 552-202111CL
EQUIPMENT: Auger	Coordinates: 08N N7048424.0m E445421.0m	

SAMPLE TYPE UNDISTURBED DCPT AUGER BULK SPT CORE



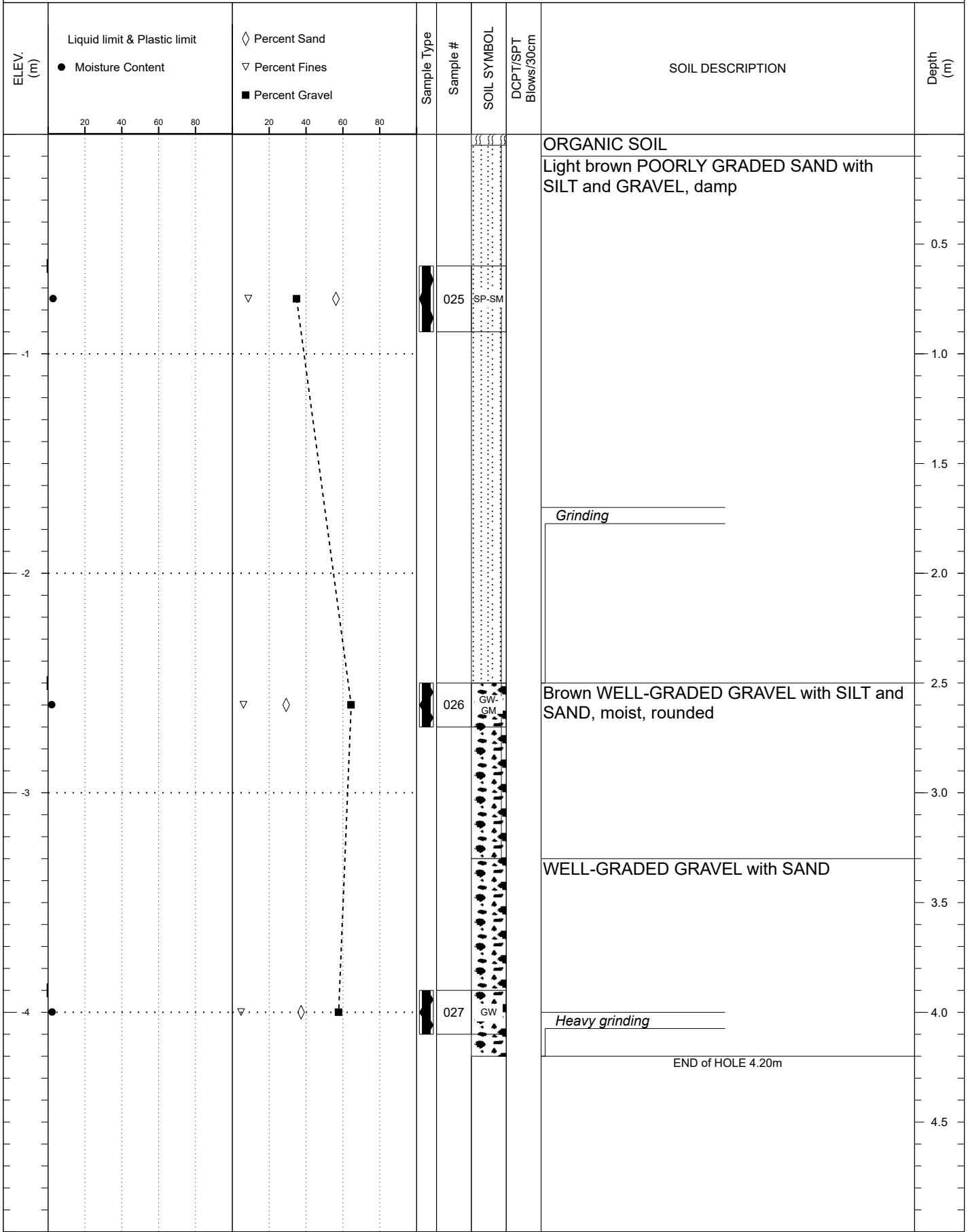
SUBSURFACE EXPLORATION AND TEST REPORT	Silver Trail CL	SOURCE/TP#: 919-6639
CLIENT: Transportation Engineering	Silver Trail #11	PROJECT NO: 552-202111CL
EQUIPMENT: Auger	Coordinates: 08N N7048539.0m E445596.0m	

SAMPLE TYPE UNDISTURBED DCPT AUGER BULK SPT CORE



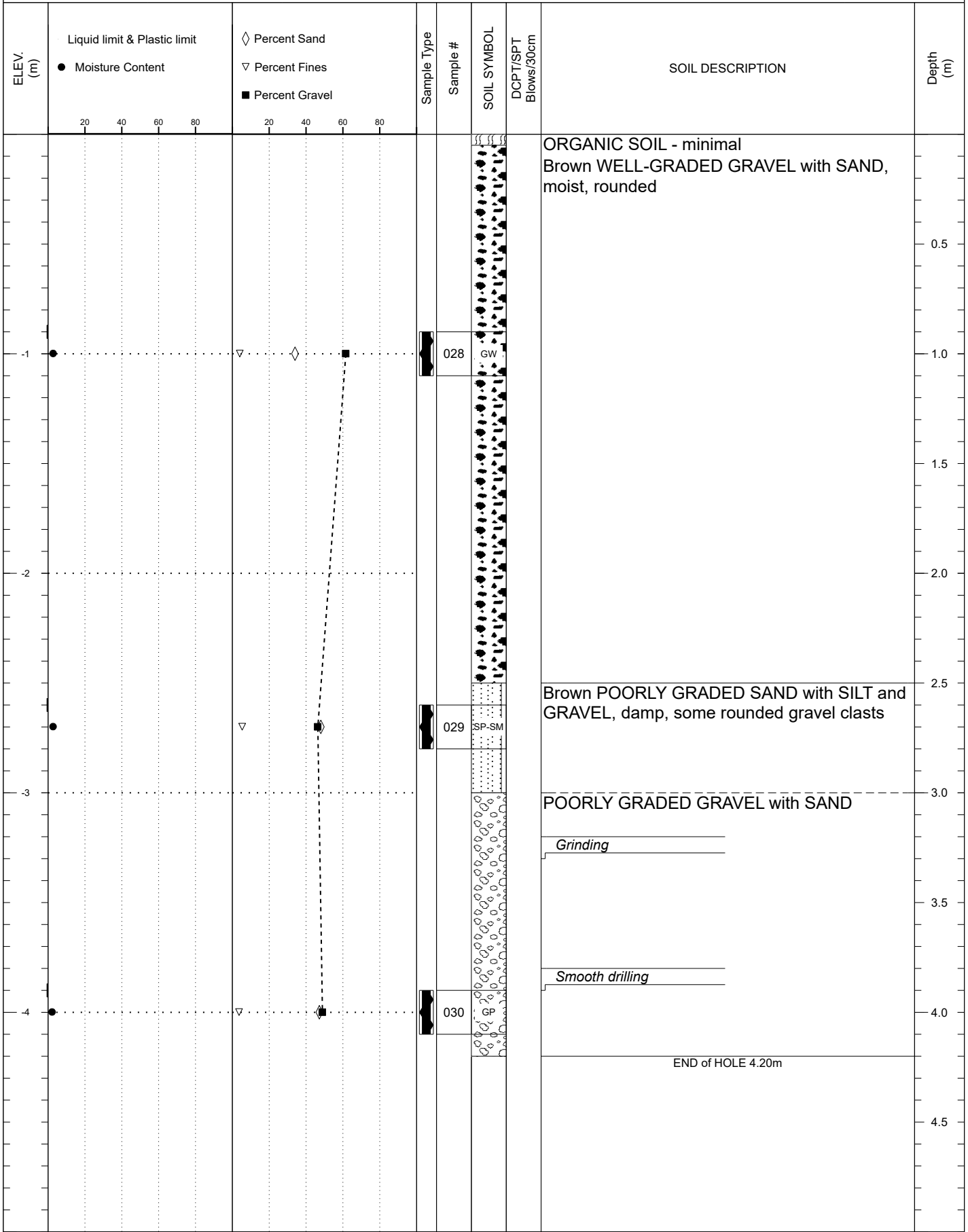
SUBSURFACE EXPLORATION AND TEST REPORT	Silver Trail CL	SOURCE/TP#: 919-6640
CLIENT: Transportation Engineering	Silver Trail #11	PROJECT NO: 552-202111CL
EQUIPMENT: Auger	Coordinates: 08N N7048704.0m E445763.0m	

SAMPLE TYPE UNDISTURBED DCPT AUGER BULK SPT CORE



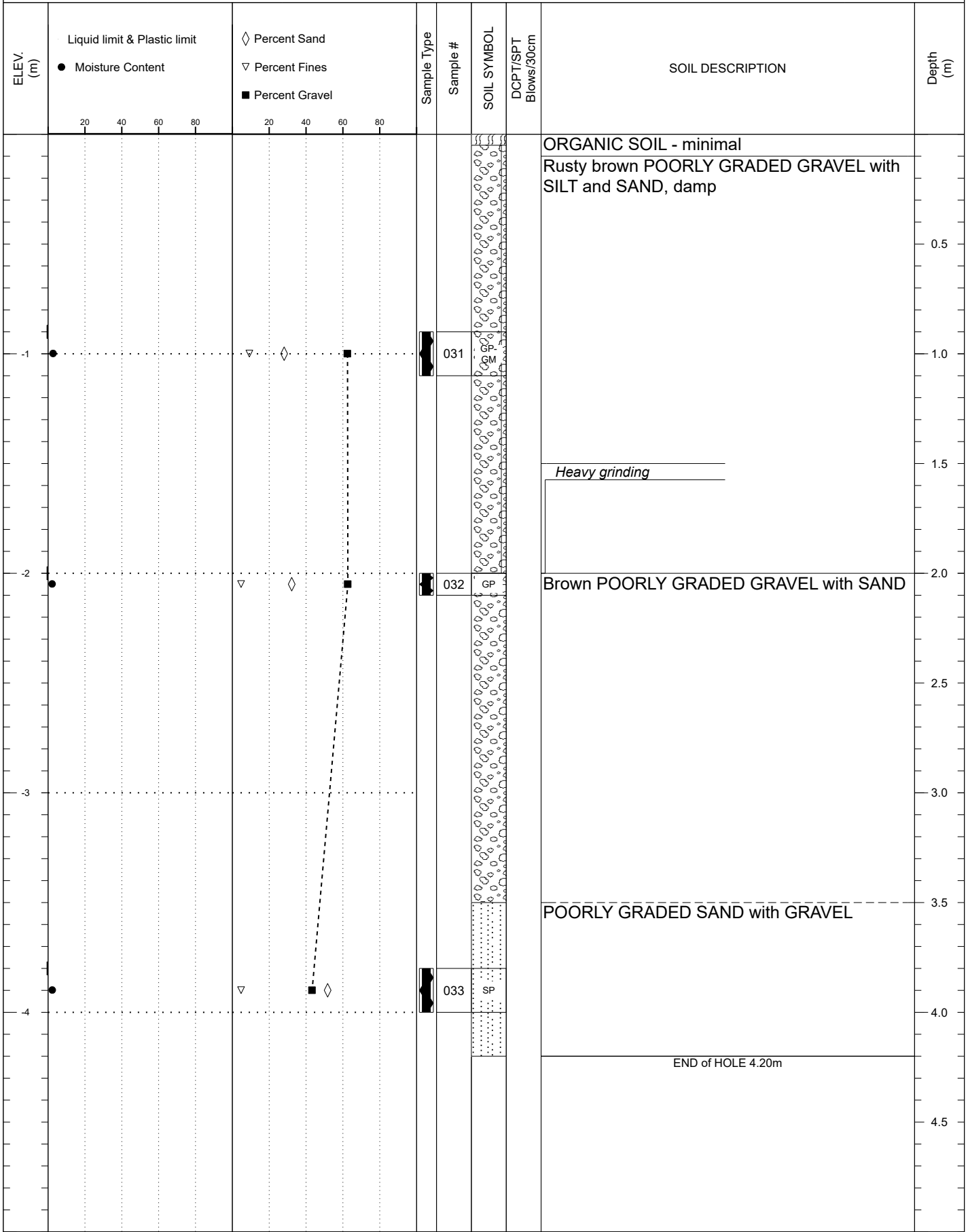
SUBSURFACE EXPLORATION AND TEST REPORT	Silver Trail CL	SOURCE/TP#: 919-6641
CLIENT: Transportation Engineering	Silver Trail #11	PROJECT NO: 552-202111CL
EQUIPMENT: Auger	Coordinates: 08N N7050219.0m E447728.0m	

SAMPLE TYPE UNDISTURBED DCPT AUGER BULK SPT CORE



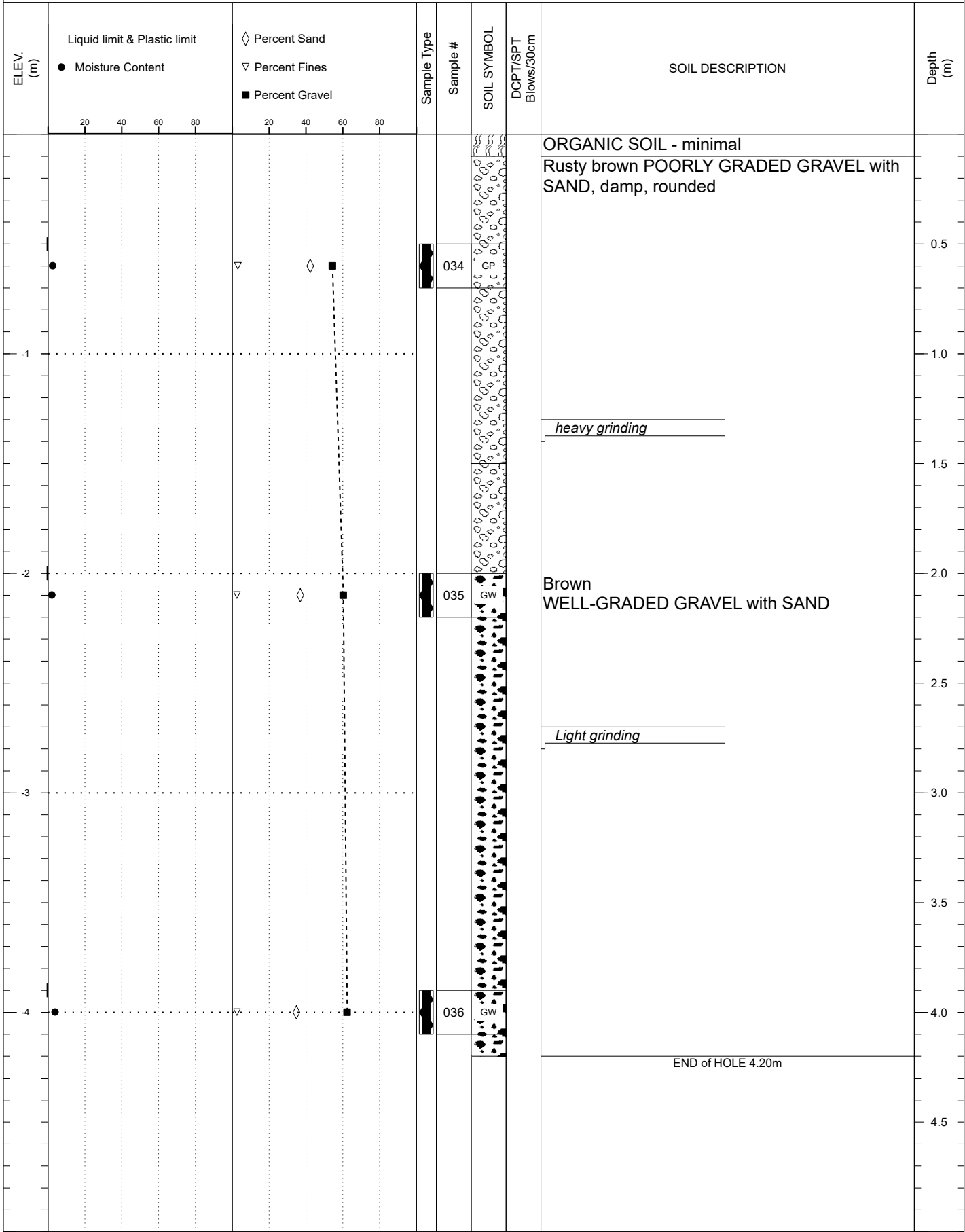
SUBSURFACE EXPLORATION AND TEST REPORT	Silver Trail CL	SOURCE/TP#: 919-6642
CLIENT: Transportation Engineering	Silver Trail #11	PROJECT NO: 552-202111CL
EQUIPMENT: Auger	Coordinates: 08N N7050189.0m E447791.0m	

SAMPLE TYPE UNDISTURBED DCPT AUGER BULK SPT CORE



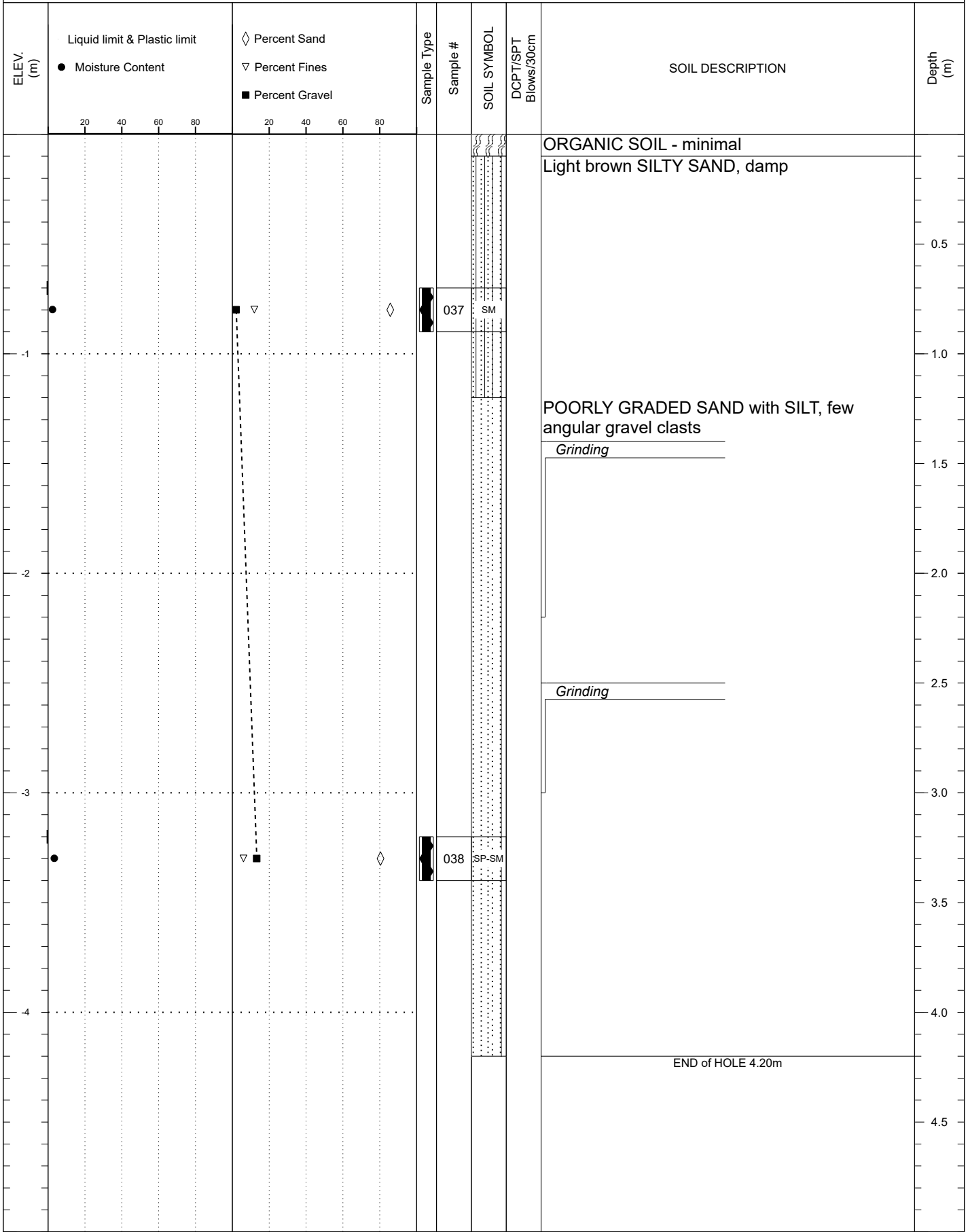
SUBSURFACE EXPLORATION AND TEST REPORT	Silver Trail CL	SOURCE/TP#: 919-6643
CLIENT: Transportation Engineering	Silver Trail #11	PROJECT NO: 552-202111CL
EQUIPMENT: Auger	Coordinates: 08N N7050127.0m E447744.0m	

SAMPLE TYPE UNDISTURBED DCPT AUGER BULK SPT CORE



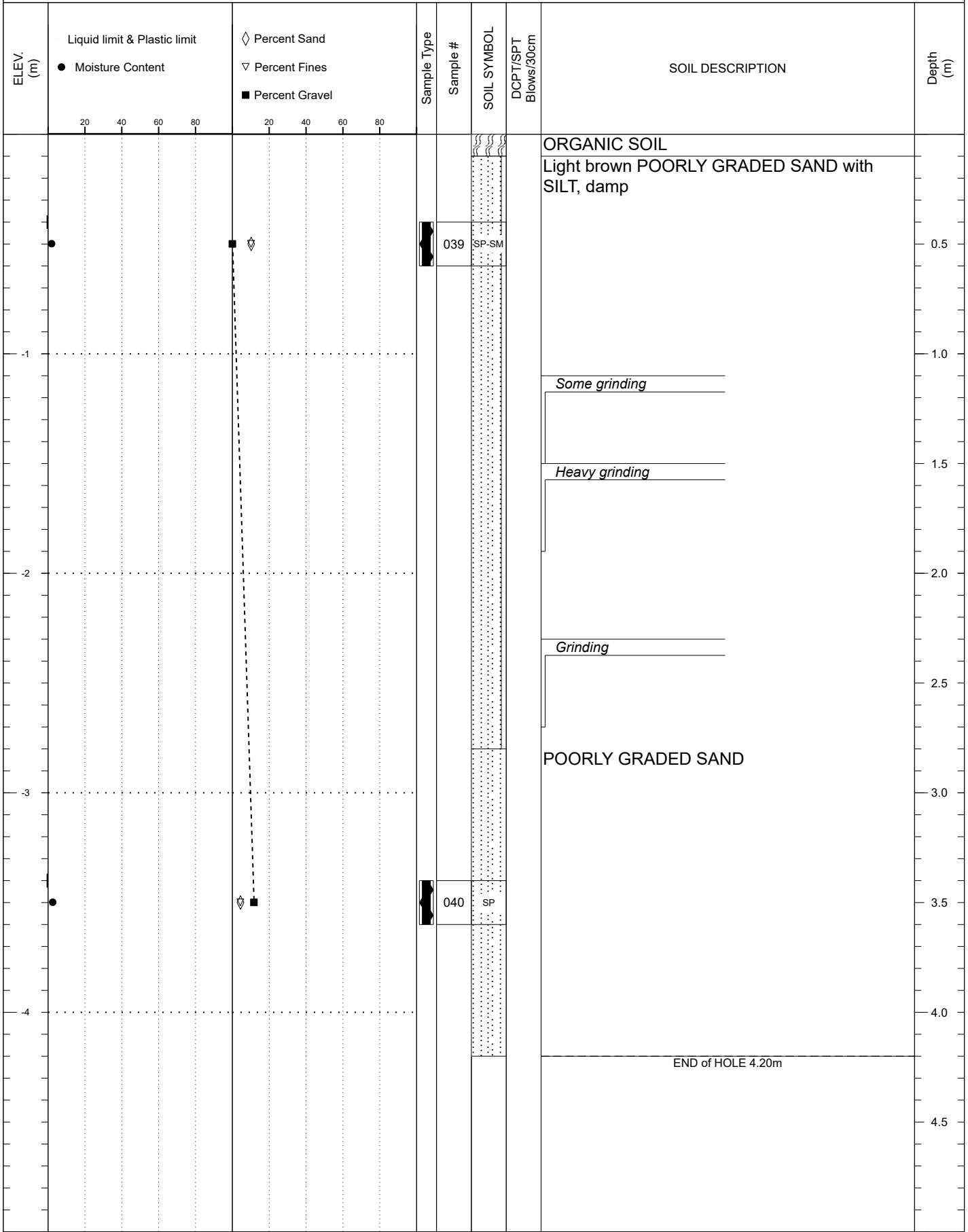
SUBSURFACE EXPLORATION AND TEST REPORT	Silver Trail CL	SOURCE/TP#: 919-6644
CLIENT: Transportation Engineering	Silver Trail #11	PROJECT NO: 552-202111CL
EQUIPMENT: Auger	Coordinates: 08N N7038743.0m E429980.0m	

SAMPLE TYPE UNDISTURBED DCPT AUGER BULK SPT CORE



SUBSURFACE EXPLORATION AND TEST REPORT	Silver Trail CL	SOURCE/TP#: 919-6645
CLIENT: Transportation Engineering	Silver Trail #11	PROJECT NO: 552-202111CL
EQUIPMENT: Auger	Coordinates: 08N N7038673.0m E429798.0m	

SAMPLE TYPE UNDISTURBED DCPT AUGER BULK SPT CORE



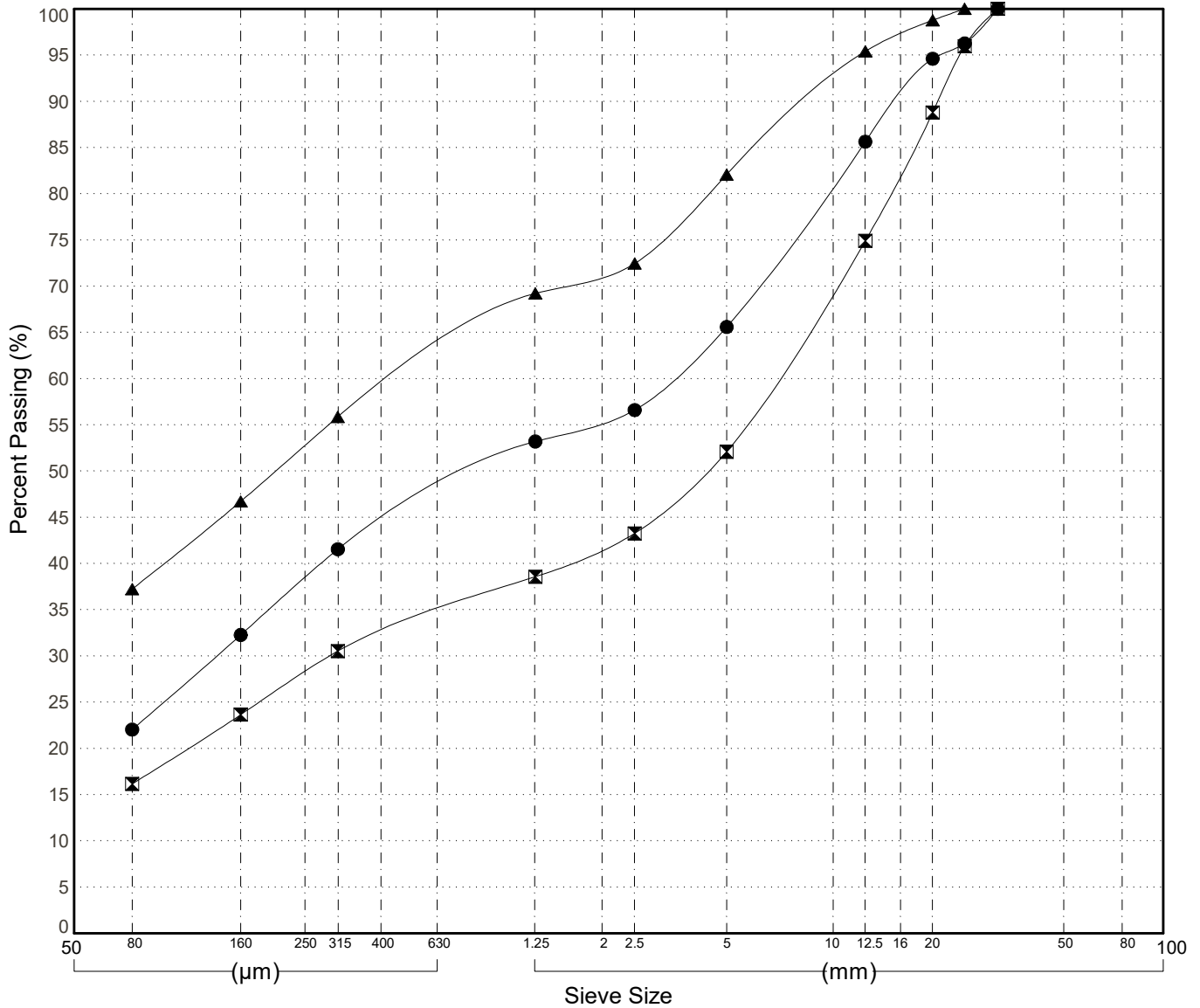
GRAIN SIZE ANALYSIS	Gravel Exploration Silver Trail	SOURCE/TP#: 919-6631
Gateway Drilling	Various Km	PROJECT NO: 552-202955-0206-5207
Auger	Coordinates:Z08V N7045085m E441049m	ELEVATION: m

Master Revised June 2017

Field #	Lab #	Depth	Classification	%H2O	LL	PL	PI	Cc	Cu	D10
● 001	001	0.6 to 0.8	SILTY SAND with GRAVEL(SM)	3.0	NP	NP	NP			
☒ 002	002	1.8 to 1.9	SILTY GRAVEL with SAND(GM)	2.6	NP	NP	NP			
▲ 003	003	3.5 to 3.8	SILTY SAND with GRAVEL(SM)	7.1	NP	NP	NP			

Field #	Lab #	100.0	80.0	50.0	25.0	20.0	12.5	10.0	5.0	2.0	0.850	0.400	0.250	0.160	0.080	% Breakdown			
		% PASSING														Gravel	Sand	Silt	Clay
●	001	100.0	100.0	100.0	96.3	94.6	85.6	81.0	65.6	55.5	49.9	44.1	38.4	32.3	22.0	34.4	43.6	22.0	
☒	002	100.0	100.0	100.0	96.0	88.8	74.9	69.6	52.1	41.8	36.3	32.3	28.2	23.6	16.2	47.9	35.9	16.2	
▲	003	100.0	100.0	100.0	100.0	98.8	95.4	92.3	82.1	71.4	65.5	58.8	52.7	46.7	37.2	17.9	44.9	37.2	

Silt	Sand			Gravel	
	Fine	Medium	Coarse	Fine	Coarse



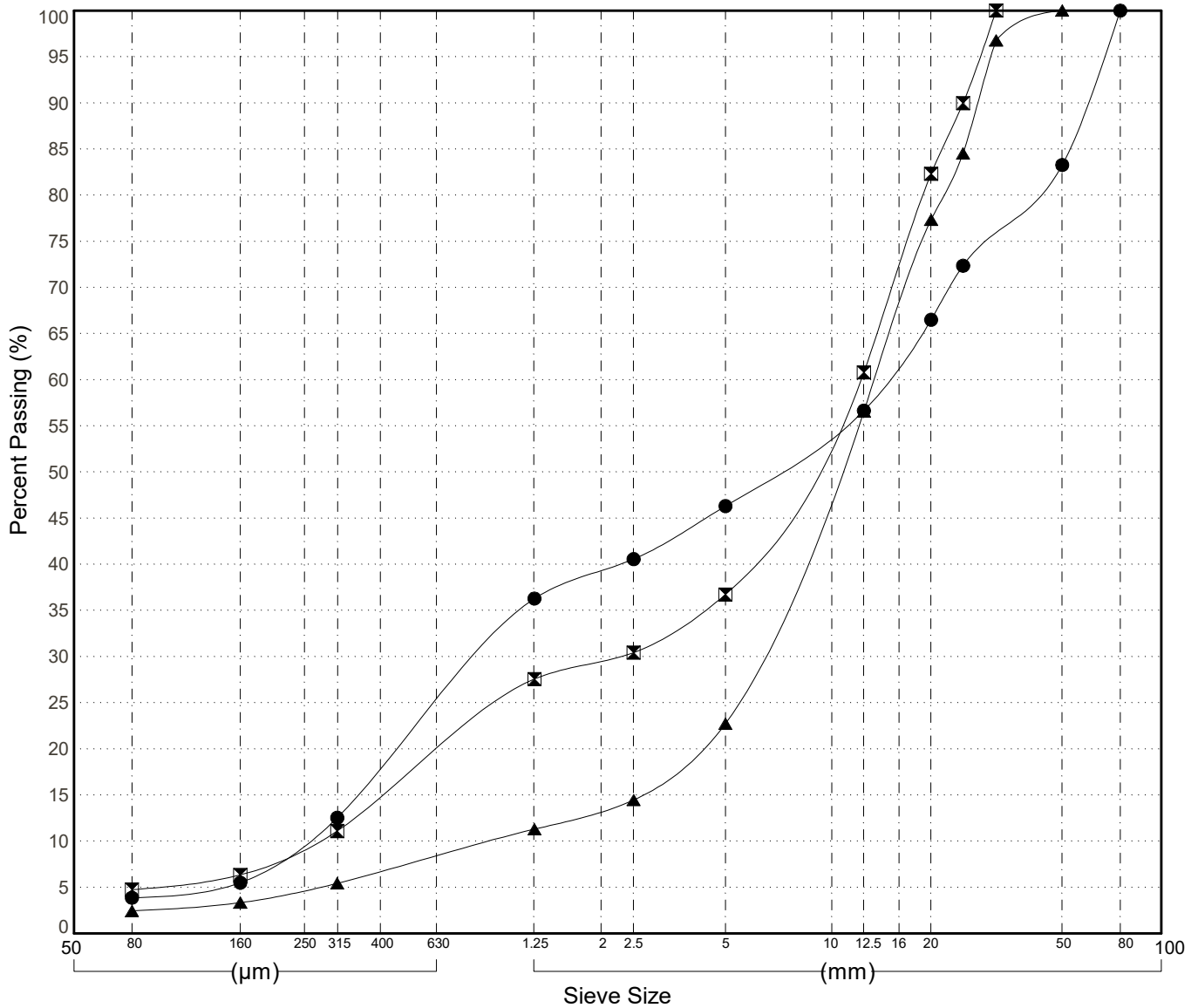
GRAIN SIZE ANALYSIS	Gravel Exploration Silver Trail	SOURCE/TP#: 919-6632
Gateway Drilling	Various Km	PROJECT NO: 552-202955-0206-5207
Auger	Coordinates:Z08V N7045741m E441696m	ELEVATION: m

Master Revised June 2017

Field #	Lab #	Depth	Classification	%H2O	LL	PL	PI	Cc	Cu	D10
● 004	004	0.9 to 1.1	POORLY GRADED GRAVEL with SAND(GP)	3.1	NP	NP	NP	0.2	59.4	0.25
☒ 005	005	2.5 to 2.7	WELL-GRADED GRAVEL with SAND(GW)	3.1	NP	NP	NP	1.6	44.9	0.27
▲ 006	006	3.7 to 3.9	WELL-GRADED GRAVEL with SAND(GW)	1.8	NP	NP	NP	2.7	14.6	0.92

Field #	Lab #	% PASSING														% Breakdown				
			100.0	80.0	50.0	25.0	20.0	12.5	10.0	5.0	2.0	0.850	0.400	0.250	0.160	0.080	Gravel	Sand	Silt	Clay
●	004	004	100.0	100.0	83.3	72.4	66.5	56.7	54.3	46.3	39.2	29.6	17.7	10.1	5.5	3.9	53.7	42.4	3.9	
☒	005	005	100.0	100.0	100.0	90.0	82.3	60.8	55.2	36.7	29.5	23.0	14.7	9.5	6.3	4.7	63.3	32.0	4.7	
▲	006	006	100.0	100.0	100.0	84.5	77.3	56.6	48.8	22.7	13.4	9.7	6.7	4.7	3.3	2.4	77.3	20.3	2.4	

Silt	Sand			Gravel	
	Fine	Medium	Coarse	Fine	Coarse



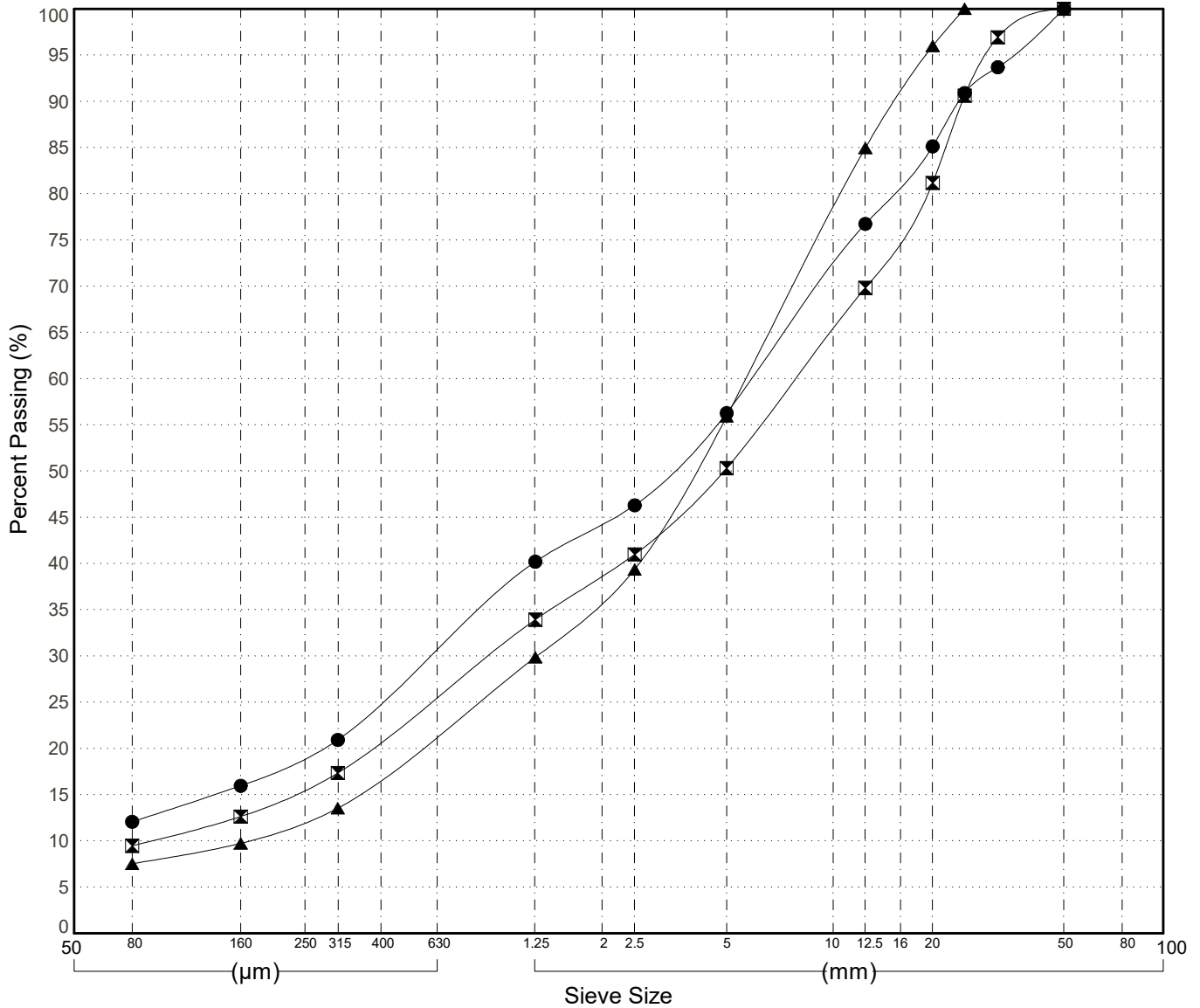
GRAIN SIZE ANALYSIS	Gravel Exploration Silver Trail	SOURCE/TP#: 919-6633
Gateway Drilling	Various Km	PROJECT NO: 552-202955-0206-5207
Auger	Coordinates:Z08V N7045683m E441654m	ELEVATION: m

Master Revised June 2017

Field #	Lab #	Depth	Classification	%H2O	LL	PL	PI	Cc	Cu	D10
● 007	007	0.8 to 0.9	SILTY SAND with GRAVEL(SM)	4.0	NP	NP	NP	1.3	112.7	
☒ 008	008	2.1 to 2.3	WELL-GRADED GRAVEL with SILT and SAND(GW-GM)	3.4	NP	NP	NP	1.2	90.1	0.09
▲ 009	009	4.1 to 4.2	WELL-GRADED SAND with SILT and GRAVEL(SW-SM)	2.6	NP	NP	NP	1.7	32.4	0.17

Field #	Lab #	% PASSING	Sieve Size (mm)													% Breakdown				
			100.0	80.0	50.0	25.0	20.0	12.5	10.0	5.0	2.0	0.850	0.400	0.250	0.160	0.080	Gravel	Sand	Silt	Clay
●	007	007	100.0	100.0	100.0	90.9	85.1	76.7	72.0	56.3	44.3	34.8	25.1	19.2	16.0	12.1	43.7	44.2	12.1	
☒	008	008	100.0	100.0	100.0	90.6	81.2	69.8	65.3	50.3	38.7	29.3	20.9	15.7	12.6	9.5	49.7	40.8	9.5	
▲	009	009	100.0	100.0	100.0	100.0	96.0	85.0	78.3	55.9	36.3	25.3	17.1	12.2	9.7	7.5	44.1	48.4	7.5	

Silt	Sand			Gravel	
	Fine	Medium	Coarse	Fine	Coarse

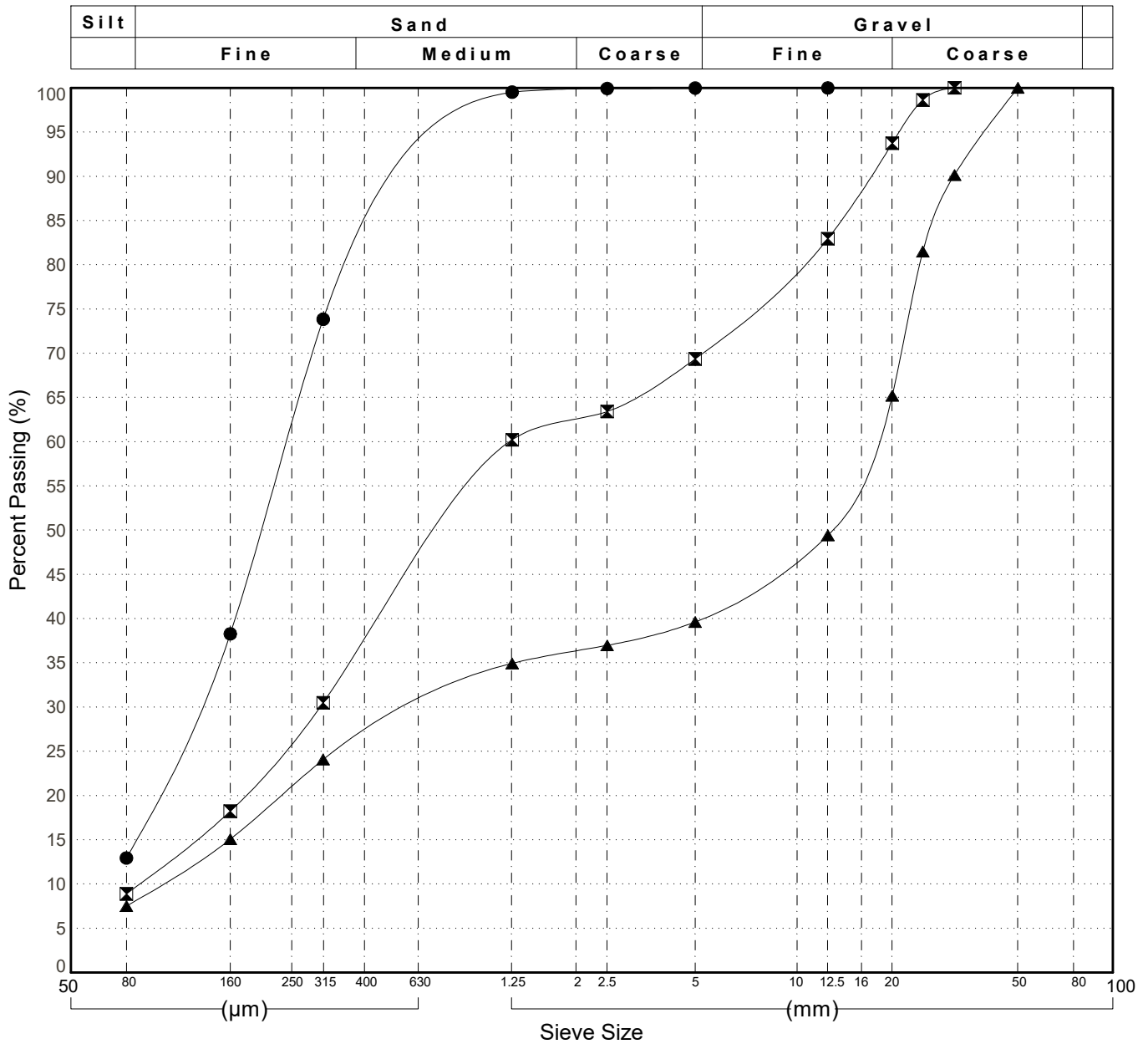


GRAIN SIZE ANALYSIS	Gravel Exploration Silver Trail	SOURCE/TP#: 919-6634
Gateway Drilling	Various Km	PROJECT NO: 552-202955-0206-5207
Auger	Coordinates:Z08V N7045640m E441563m	ELEVATION: m

Master Revised June 2017

Field #	Lab #	Depth	Classification	%H2O	LL	PL	PI	Cc	Cu	D10
● 010	010	0.6 to 0.9	SILTY SAND(SM)	3.2	NP	NP	NP			
☒ 011	011	2.8 to 2.9	POORLY GRADED SAND with SILT and GRAVEL(SP-SM)	2.8	NP	NP	NP	0.9	15.1	0.08
▲ 012	012	3.1 to 3.3	POORLY GRADED GRAVEL with SILT and SAND(GP-GM)	2.5	NP	NP	NP	0.3	177.9	0.10

Field #	Lab #	100.0	80.0	50.0	25.0	20.0	12.5	10.0	5.0	2.0	0.850	0.400	0.250	0.160	0.080	% Breakdown			
		% PASSING														Gravel	Sand	Silt	Clay
● 010	010	100.0	100.0	100.0	100.0	100.0	100.0	100.0	100.0	99.8	92.3	79.4	61.7	38.3	12.9	0.0	87.0	12.9	
☒ 011	011	100.0	100.0	100.0	98.6	93.7	83.0	79.8	69.4	62.4	51.9	37.0	26.3	18.2	8.9	30.6	60.5	8.9	
▲ 012	012	100.0	100.0	100.0	81.5	65.2	49.4	47.2	39.6	36.3	31.9	26.4	21.0	15.1	7.5	60.4	32.1	7.5	

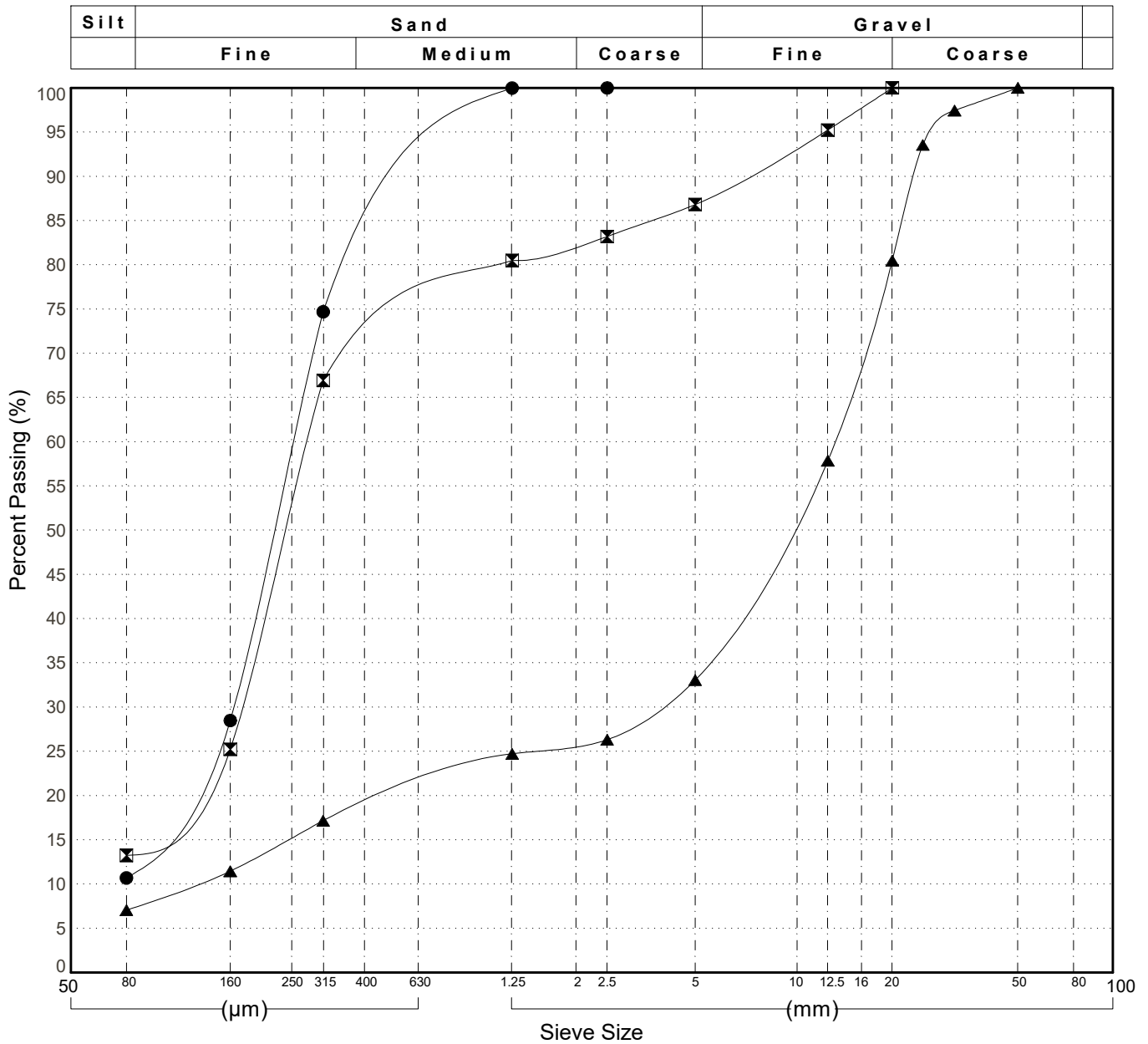


GRAIN SIZE ANALYSIS	Gravel Exploration Silver Trail	SOURCE/TP#: 919-6635
Gateway Drilling	Various Km	PROJECT NO: 552-202955-0206-5207
Auger	Coordinates:Z08V N7045539m E441569m	ELEVATION: m

Master Revised June 2017

Field #	Lab #	Depth	Classification	%H2O	LL	PL	PI	Cc	Cu	D10
● 013	013	0.4 to 0.6	POORLY GRADED SAND with SILT(SP-SM)	4.5	NP	NP	NP	1.4	3.5	
☒ 014	014	1.4 to 1.5	SILTY SAND(SM)	5.0	NP	NP	NP			
▲ 015	015	3.5 to 3.6	POORLY GRADED GRAVEL with SILT and SAND(GP-GM)	3.0	NP	NP	NP	7.7	104.9	0.12

Field #	Lab #	% PASSING	Sieve Size (mm)														% Breakdown							
			100.0	80.0	50.0	25.0	20.0	12.5	10.0	5.0	2.0	0.850	0.400	0.250	0.160	0.080	Gravel	Sand	Silt	Clay				
●	013	013	100.0	100.0	100.0	100.0	100.0	100.0	100.0	100.0	100.0	100.0	100.0	100.0	100.0	92.9	80.2	58.9	28.5	10.7	0.0	89.3		10.7
☒	014	014	100.0	100.0	100.0	100.0	100.0	95.2	93.3	86.8	82.3	76.7	69.9	52.7	25.2	13.2	13.2	73.6		13.2				
▲	015	015	100.0	100.0	100.0	93.6	80.5	57.9	52.1	33.1	25.8	22.6	18.8	15.2	11.5	7.0	66.9	26.0		7.0				

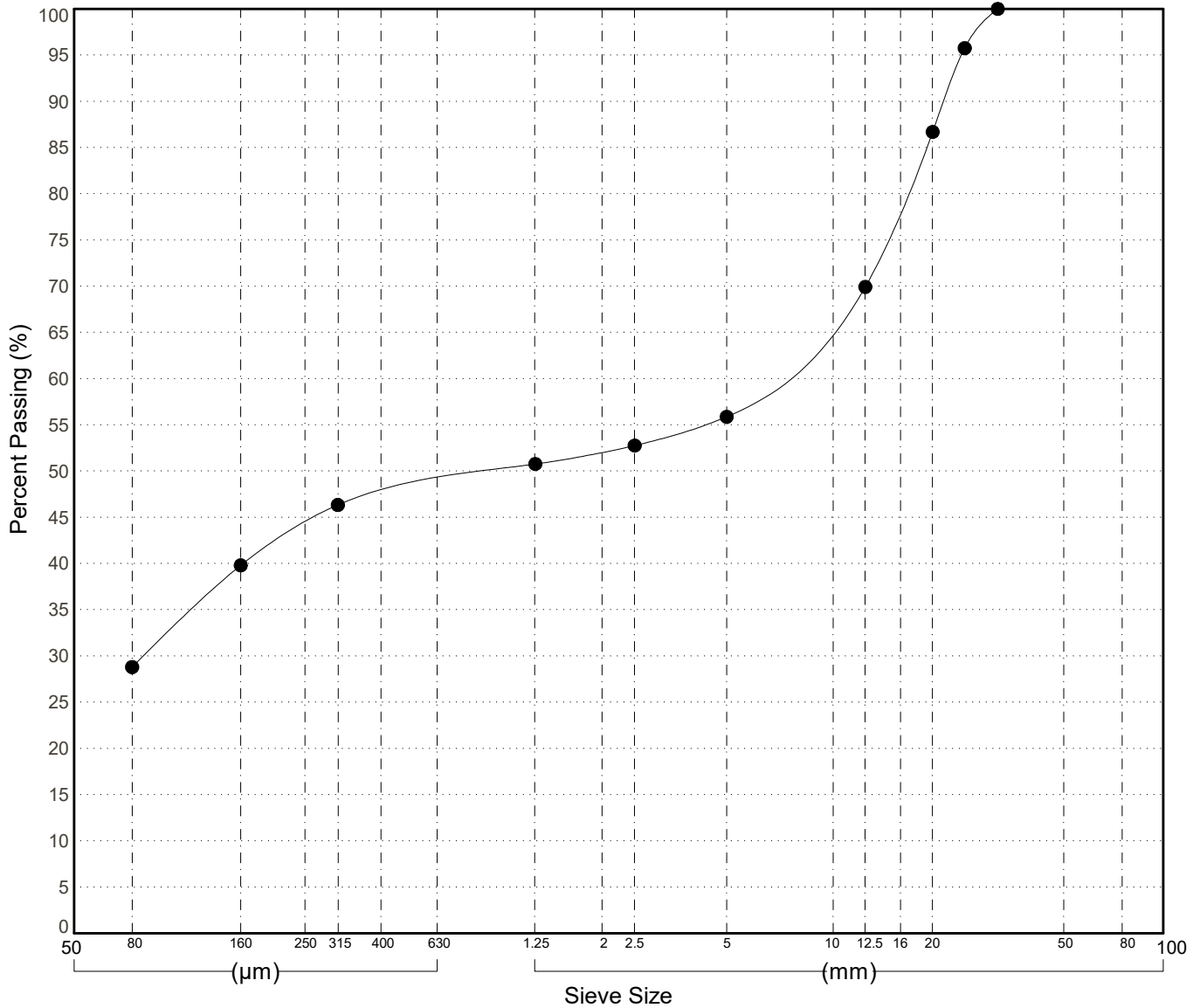


GRAIN SIZE ANALYSIS	Gravel Exploration Silver Trail	SOURCE/TP#: 919-6636
Gateway Drilling	Various Km	PROJECT NO: 552-202955-0206-5207
Auger	Coordinates:Z08V N7045858m E441852m	ELEVATION: m

Master Revised June 2017

Field #	Lab #	Depth	Classification													%H2O	LL	PL	PI	Cc	Cu	D10
● 016	016	0.3 to 0.5	SILTY GRAVEL with SAND(GM)													8.9	NP	NP	NP			
Field #	Lab #	100.0	80.0	50.0	25.0	20.0	12.5	10.0	5.0	2.0	0.850	0.400	0.250	0.160	0.080	% Breakdown						
● 016	016	100.0	100.0	100.0	95.8	86.7	69.9	66.7	55.9	52.1	49.5	47.3	44.1	39.8	28.8	Gravel	Sand	Silt	Clay			
																44.1	27.1		28.8			

Silt	Sand			Gravel	
	Fine	Medium	Coarse	Fine	Coarse

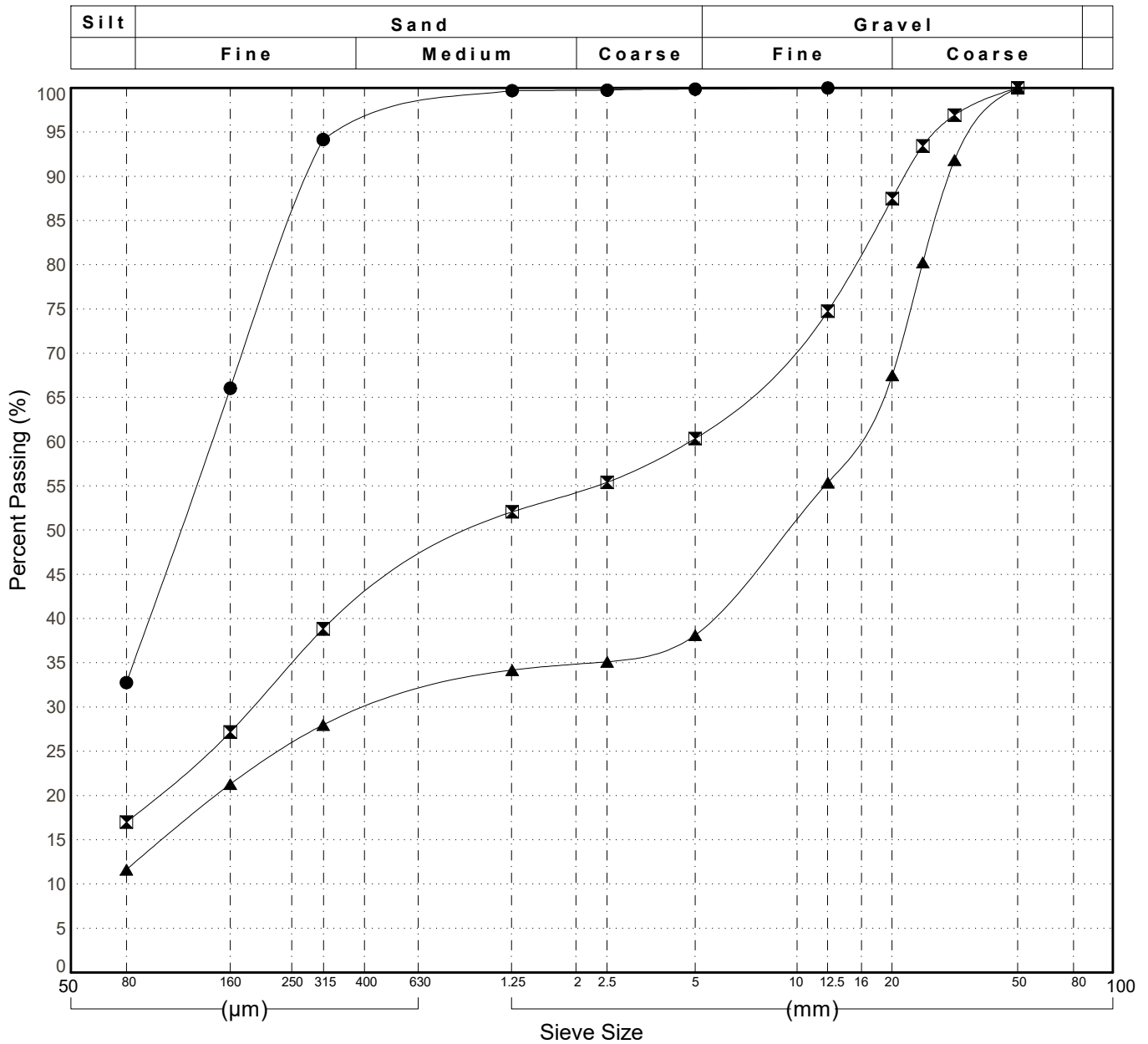


GRAIN SIZE ANALYSIS	Gravel Exploration Silver Trail	SOURCE/TP#: 919-6637
Gateway Drilling	Various Km	PROJECT NO: 552-202955-0206-5207
Auger	Coordinates:Z08V N7045879m E442016m	ELEVATION: m

Master Revised June 2017

Field #	Lab #	Depth	Classification	%H2O	LL	PL	PI	Cc	Cu	D10
● 017	017	0.4 to 0.6	SILTY SAND(SM)	8.5	NP	NP	NP			
☒ 018	018	1.3 to 1.5	SILTY SAND with GRAVEL(SM)	5.7	NP	NP	NP			
▲ 019	019	3.8 to 4.0	POORLY GRADED GRAVEL with SILT and SAND(GP-GM)	3.4	NP	NP	NP	0.2	226.5	

Field #	Lab #	%PASSING														% Breakdown				
			100.0	80.0	50.0	25.0	20.0	12.5	10.0	5.0	2.0	0.850	0.400	0.250	0.160	0.080	Gravel	Sand	Silt	Clay
●	017	017	100.0	100.0	100.0	100.0	100.0	100.0	100.0	99.9	99.7	98.1	95.4	84.6	66.0	32.8	0.1	67.1		32.8
☒	018	018	100.0	100.0	100.0	93.4	87.5	74.8	71.4	60.4	54.3	48.4	41.7	34.9	27.2	17.0	39.6	43.4		17.0
▲	019	019	100.0	100.0	100.0	80.3	67.5	55.4	51.4	38.1	34.8	32.5	29.3	25.7	21.3	11.6	61.9	26.5		11.6

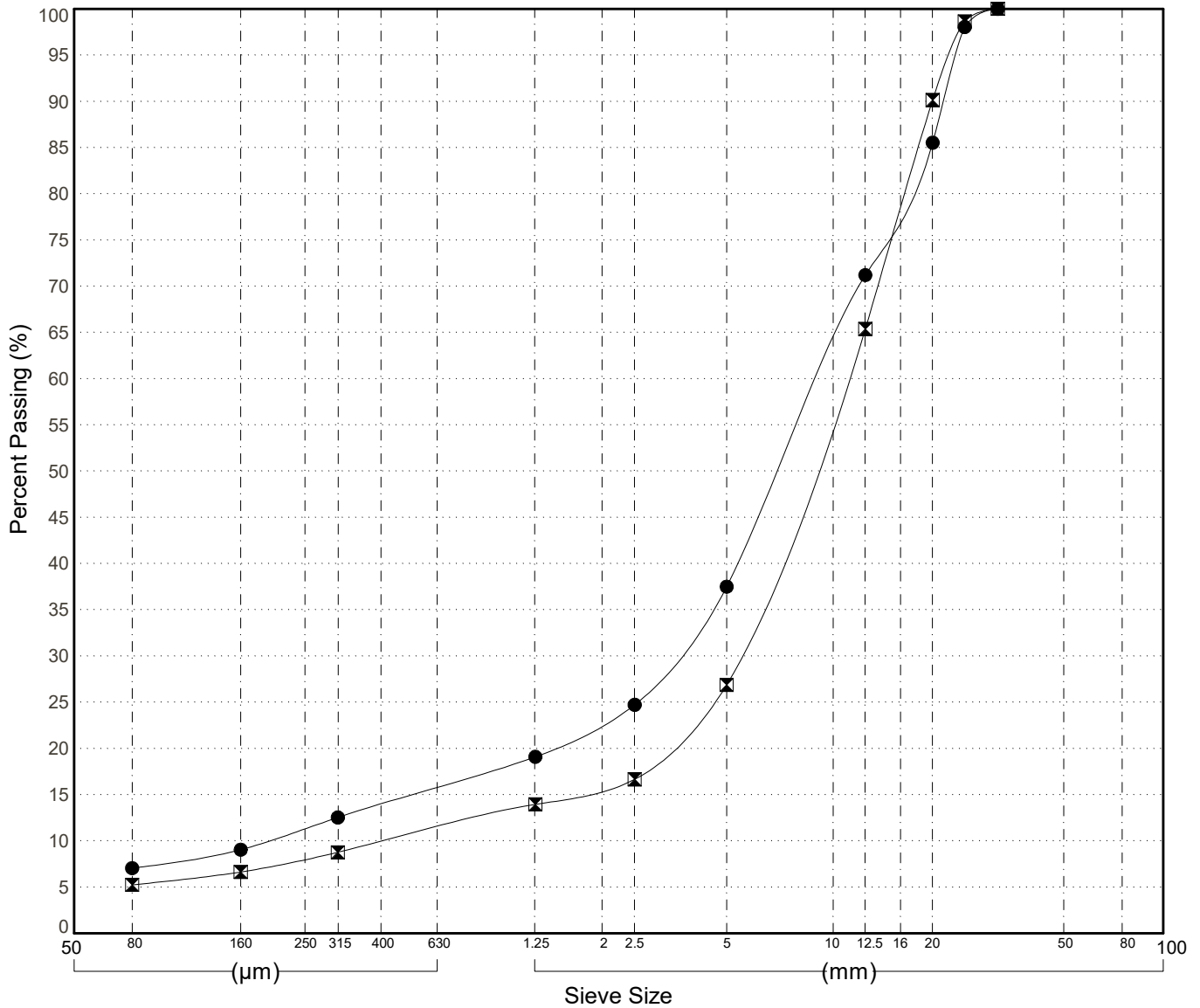


GRAIN SIZE ANALYSIS	Gravel Exploration Silver Trail	SOURCE/TP#: 919-6638
Gateway Drilling	Various Km	PROJECT NO: 552-202955-0206-5207
Auger	Coordinates:Z08V N7048424m E445421m	ELEVATION: m

Master Revised June 2017

Field #	Lab #	Depth	Classification	%H2O	LL	PL	PI	Cc	Cu	D10									
● 020	020	0.4 to 0.6	POORLY GRADED GRAVEL with SILT and SAND(GP-GM)	2.4	NP	NP	NP	6.1	47.0	0.19									
☒ 021	021	2.2 to 2.4	POORLY GRADED GRAVEL with SILT and SAND(GP-GM)	2.1	NP	NP	NP	5.5	24.9	0.44									
Field #	Lab #	100.0	80.0	50.0	25.0	20.0	12.5	10.0	5.0	2.0	0.850	0.400	0.250	0.160	0.080	% Breakdown			
● 020	020	100.0	100.0	100.0	98.0	85.5	71.2	63.4	37.5	22.9	17.3	14.0	11.3	9.0	7.0	Gravel	Sand	Silt	Clay
☒ 021	021	100.0	100.0	100.0	98.7	90.1	65.4	56.5	26.9	15.8	12.5	9.9	8.0	6.6	5.2	73.1	21.6	5.2	

Silt	Sand			Gravel	
	Fine	Medium	Coarse	Fine	Coarse



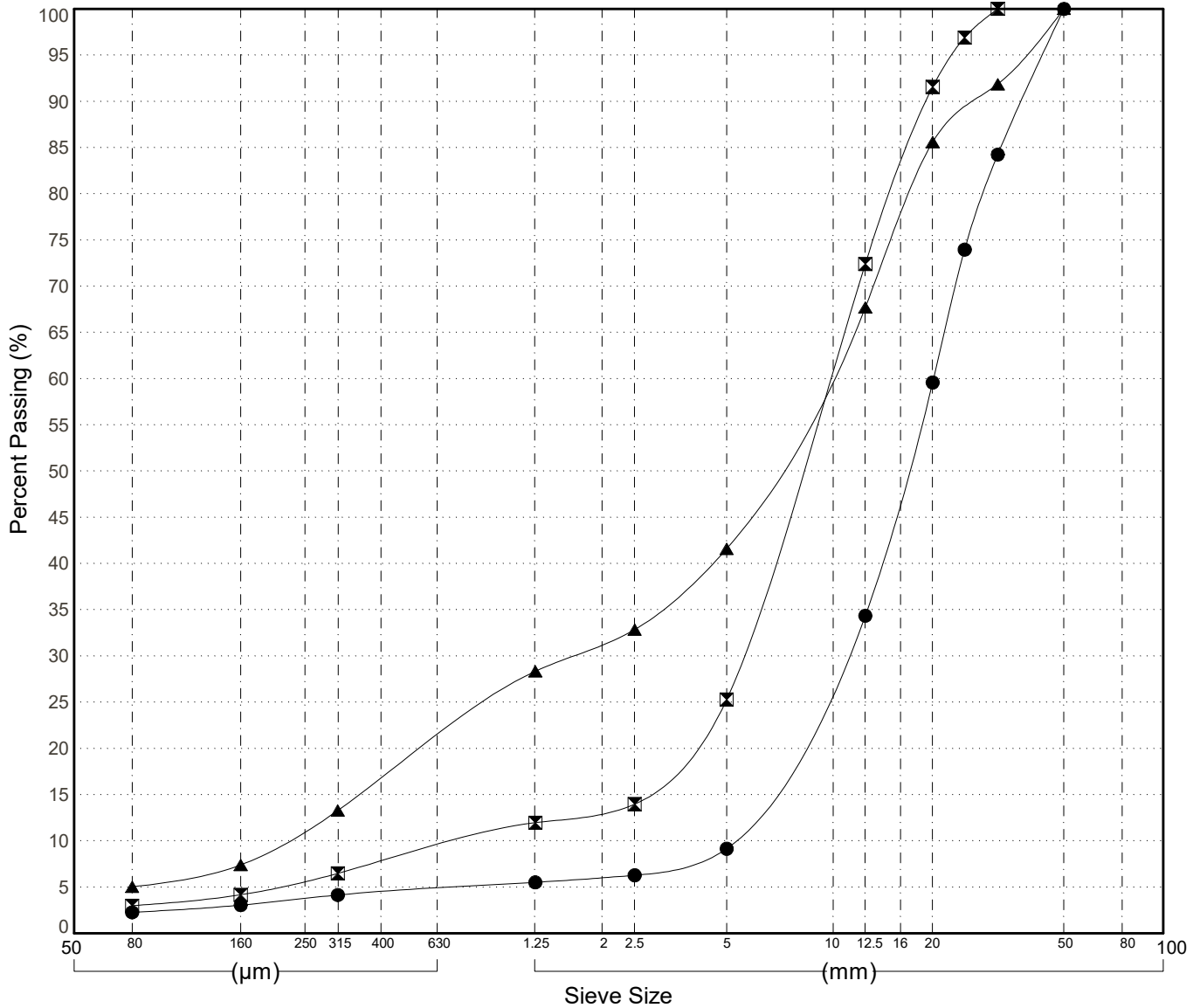
GRAIN SIZE ANALYSIS	Gravel Exploration Silver Trail	SOURCE/TP#: 919-6639
Gateway Drilling	Various Km	PROJECT NO: 552-202955-0206-5207
Auger	Coordinates:Z08V N7048539m E445596m	ELEVATION: m

Master Revised June 2017

Field #	Lab #	Depth	Classification	%H2O	LL	PL	PI	Cc	Cu	D10
● 022	022	0.6 to 0.8	WELL-GRADED GRAVEL(GW)	1.7	NP	NP	NP	1.1	4.1	4.91
☒ 023	023	2.6 to 2.8	POORLY GRADED GRAVEL with SAND(GP)	1.5	NP	NP	NP	3.7	12.7	0.76
▲ 024	024	3.9 to 4.1	WELL-GRADED GRAVEL with SILT and SAND(GW-GM)	1.8	NP	NP	NP	1.3	43.5	0.22

Field #	Lab #	%PASSING	Sieve Size (mm)													% Breakdown				
			100.0	80.0	50.0	25.0	20.0	12.5	10.0	5.0	2.0	0.850	0.400	0.250	0.160	0.080	Gravel	Sand	Silt	Clay
●	022	022	100.0	100.0	100.0	74.0	59.6	34.4	28.5	9.1	6.0	5.1	4.4	3.8	3.0	2.3	90.9	6.9	2.3	
☒	023	023	100.0	100.0	100.0	96.9	91.6	72.4	61.5	25.3	13.3	10.4	7.7	5.7	4.2	3.0	74.7	22.3	3.0	
▲	024	024	100.0	100.0	100.0	88.7	85.6	67.7	61.7	41.6	31.4	24.1	16.6	11.3	7.4	5.0	58.4	36.6	5.0	

Silt	Sand			Gravel	
	Fine	Medium	Coarse	Fine	Coarse

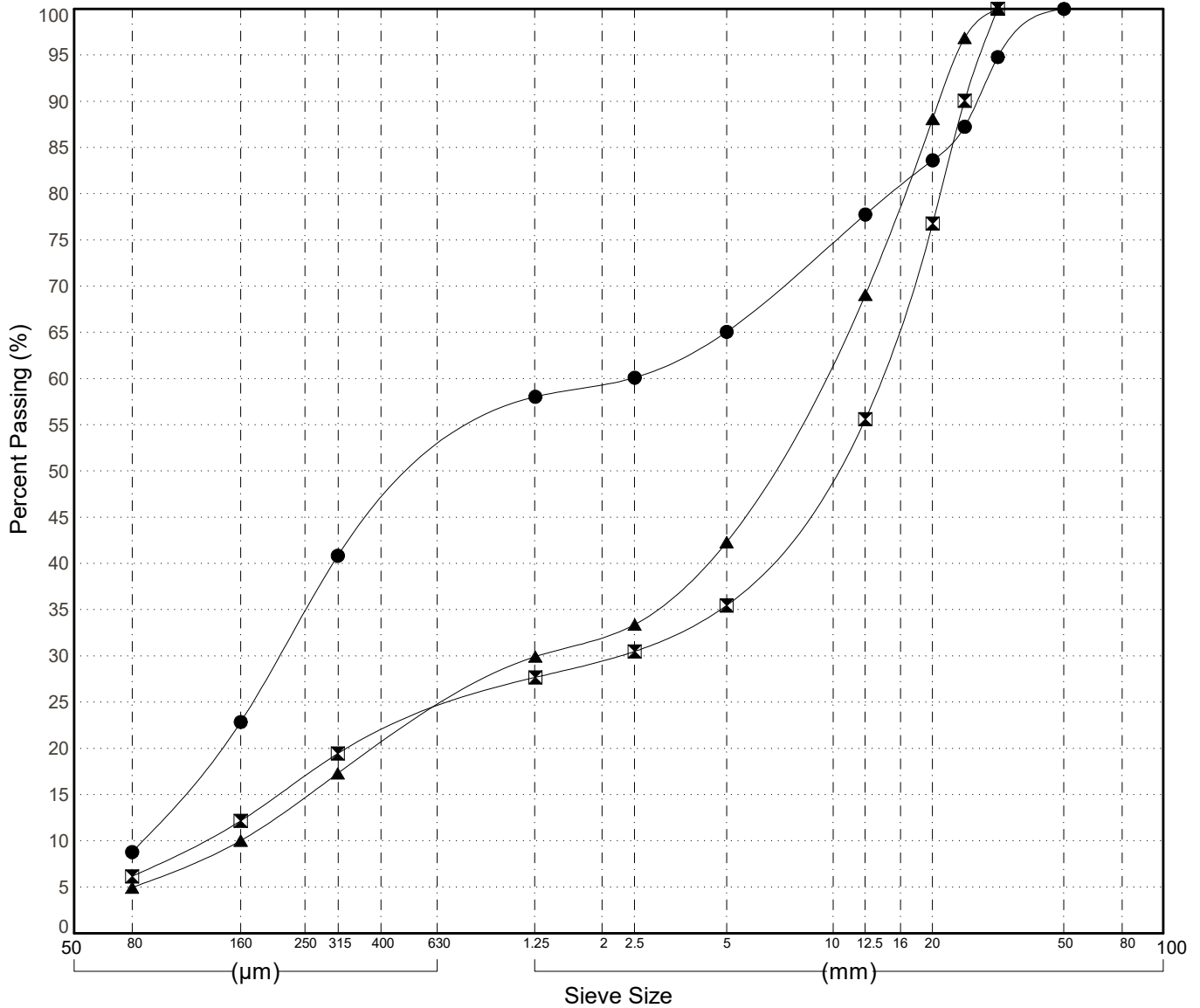


GRAIN SIZE ANALYSIS	Gravel Exploration Silver Trail	SOURCE/TP#: 919-6640
Gateway Drilling	Various Km	PROJECT NO: 552-202955-0206-5207
Auger	Coordinates:Z08V N7048704m E445763m	ELEVATION: m

Master Revised June 2017

Field #	Lab #	Depth	Classification	%H2O	LL	PL	PI	Cc	Cu	D10									
● 025	025	0.6 to 0.9	POORLY GRADED SAND with SILT and GRAVEL(SP-SM)	2.9	NP	NP	NP	0.2	30.2	0.08									
☒ 026	026	2.5 to 2.7	WELL-GRADED GRAVEL with SILT and SAND(GW-GM)	2.1	NP	NP	NP	2.9	113.2	0.12									
▲ 027	027	3.9 to 4.1	WELL-GRADED GRAVEL with SAND(GW)	2.3	NP	NP	NP	1.1	56.5	0.16									
Field #	Lab #	100.0	80.0	50.0	25.0	20.0	12.5	10.0	5.0	2.0	0.850	0.400	0.250	0.160	0.080	% Breakdown			
																Gravel	Sand	Silt	Clay
● 025	025	100.0	100.0	100.0	87.3	83.6	77.8	74.8	65.1	59.4	53.2	44.6	34.7	22.9	8.8	34.9	56.3		8.8
☒ 026	026	100.0	100.0	100.0	90.1	76.8	55.6	51.0	35.5	29.6	25.4	21.2	17.0	12.2	6.2	64.5	29.3		6.2
▲ 027	027	100.0	100.0	100.0	96.9	88.1	69.1	62.9	42.3	32.3	26.4	20.0	14.8	10.0	4.9	57.7	37.4		4.9

Silt	Sand			Gravel	
	Fine	Medium	Coarse	Fine	Coarse

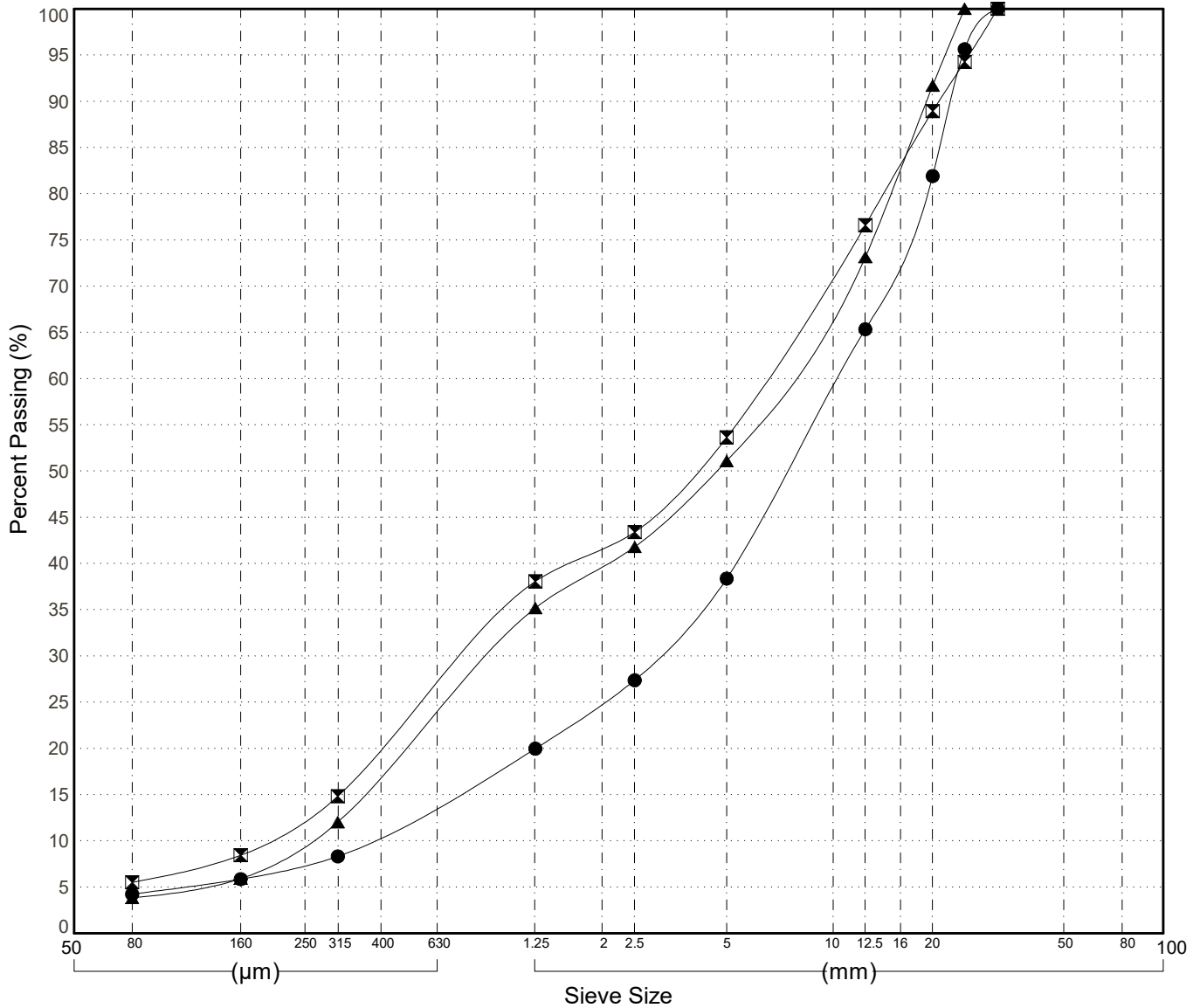


GRAIN SIZE ANALYSIS	Gravel Exploration Silver Trail	SOURCE/TP#: 919-6641
Gateway Drilling	Various Km	PROJECT NO: 552-202955-0206-5207
Auger	Coordinates:Z08V N7050219m E447728m	ELEVATION: m

Master Revised June 2017

Field #	Lab #	Depth	Classification	%H2O	LL	PL	PI	Cc	Cu	D10										
● 028	028	0.9 to 1.1	WELL-GRADED GRAVEL with SAND(GW)	2.9	NP	NP	NP	2.1	26.8	0.38										
☒ 029	029	2.6 to 2.8	POORLY GRADED SAND with SILT and GRAVEL(SP-SM)	2.9	NP	NP	NP	0.5	32.9	0.19										
▲ 030	030	3.9 to 4.1	POORLY GRADED GRAVEL with SAND(GP)	2.3	NP	NP	NP	0.5	27.9	0.25										
Field #	Lab #	100.0	80.0	50.0	25.0	20.0	12.5	10.0	5.0	2.0	0.850	0.400	0.250	0.160	0.080	% Breakdown				
																Gravel	Sand	Silt	Clay	
● 028	028	100.0	100.0	100.0	95.6	81.9	65.3	59.1	38.4	25.0	16.7	10.9	7.5	5.9	4.2	61.6	34.1		4.2	
☒ 029	029	100.0	100.0	100.0	94.3	88.9	76.6	71.3	53.6	41.7	31.6	19.9	12.6	8.4	5.5	46.4	48.1		5.5	
▲ 030	030	100.0	100.0	100.0	100.0	91.7	73.1	68.1	51.1	39.7	28.7	17.1	9.9	5.9	3.8	48.9	47.3		3.8	

Silt	Sand			Gravel	
	Fine	Medium	Coarse	Fine	Coarse



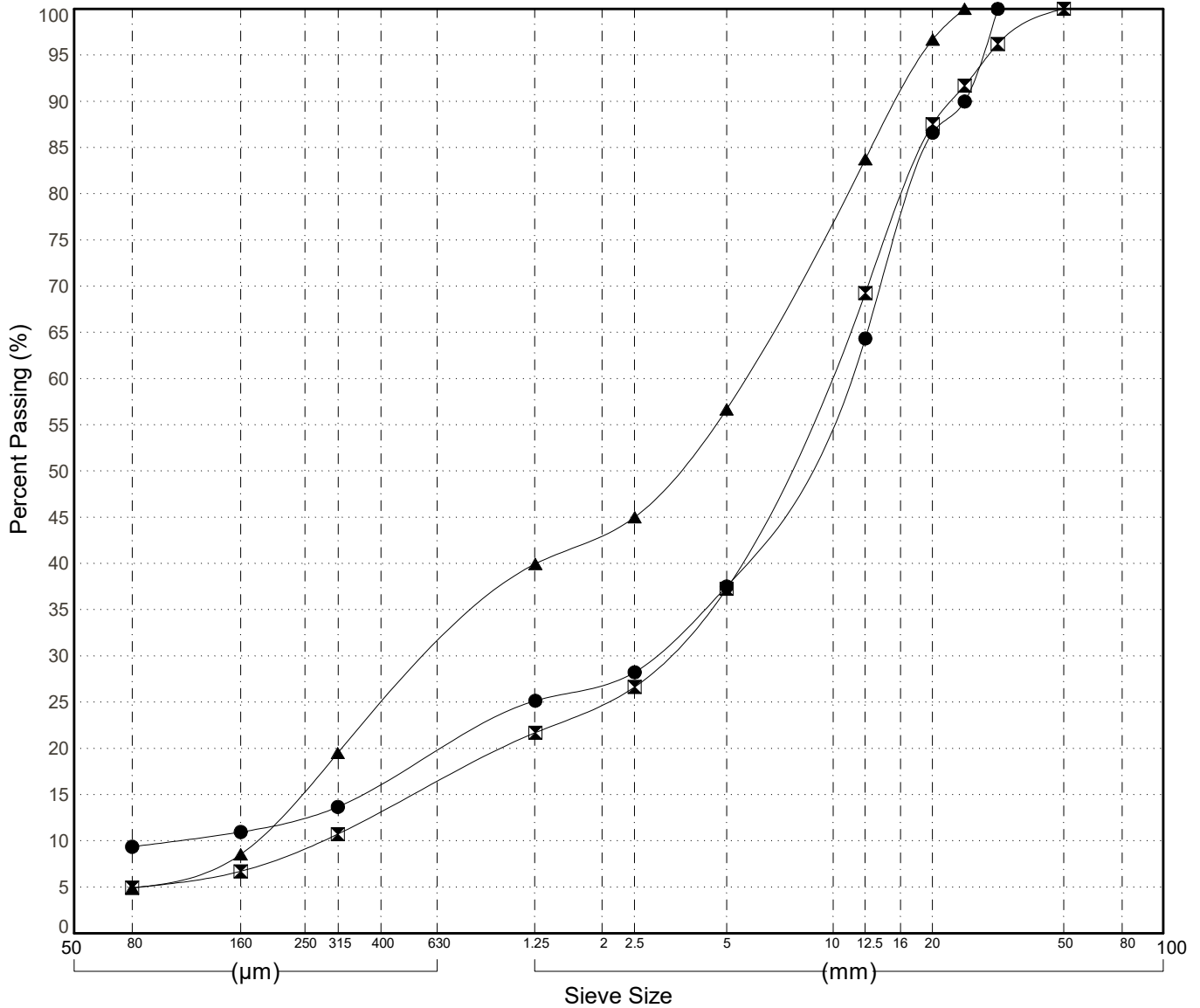
GRAIN SIZE ANALYSIS	Gravel Exploration Silver Trail	SOURCE/TP#: 919-6642
Gateway Drilling	Various Km	PROJECT NO: 552-202955-0206-5207
Auger	Coordinates:Z08V N7050189m E447791m	ELEVATION: m

Master Revised June 2017

Field #	Lab #	Depth	Classification	%H2O	LL	PL	PI	Cc	Cu	D10
● 031	031	0.9 to 1.1	POORLY GRADED GRAVEL with SILT and SAND(GP-GM)	2.9	NP	NP	NP	7.3	105.1	0.10
☒ 032	032	2.0 to 2.1	POORLY GRADED GRAVEL with SAND(GP)	2.4	NP	NP	NP	3.6	33.9	0.28
▲ 033	033	3.8 to 4.0	POORLY GRADED SAND with GRAVEL(SP)	2.4	NP	NP	NP	0.4	30.5	0.18

Field #	Lab #	% PASSING	Sieve Size (mm)													% Breakdown				
			100.0	80.0	50.0	25.0	20.0	12.5	10.0	5.0	2.0	0.850	0.400	0.250	0.160	0.080	Gravel	Sand	Silt	Clay
●	031	031	100.0	100.0	100.0	90.0	86.6	64.4	58.2	37.5	27.2	21.9	16.2	12.7	11.0	9.4	62.5	28.2		9.4
☒	032	032	100.0	100.0	100.0	91.7	87.5	69.3	61.9	37.3	25.1	18.6	13.1	9.4	6.7	4.9	62.7	32.3		4.9
▲	033	033	100.0	100.0	100.0	100.0	96.7	83.7	77.5	56.7	43.4	34.2	23.9	15.8	8.5	4.9	43.3	51.8		4.9

Silt	Sand			Gravel	
	Fine	Medium	Coarse	Fine	Coarse



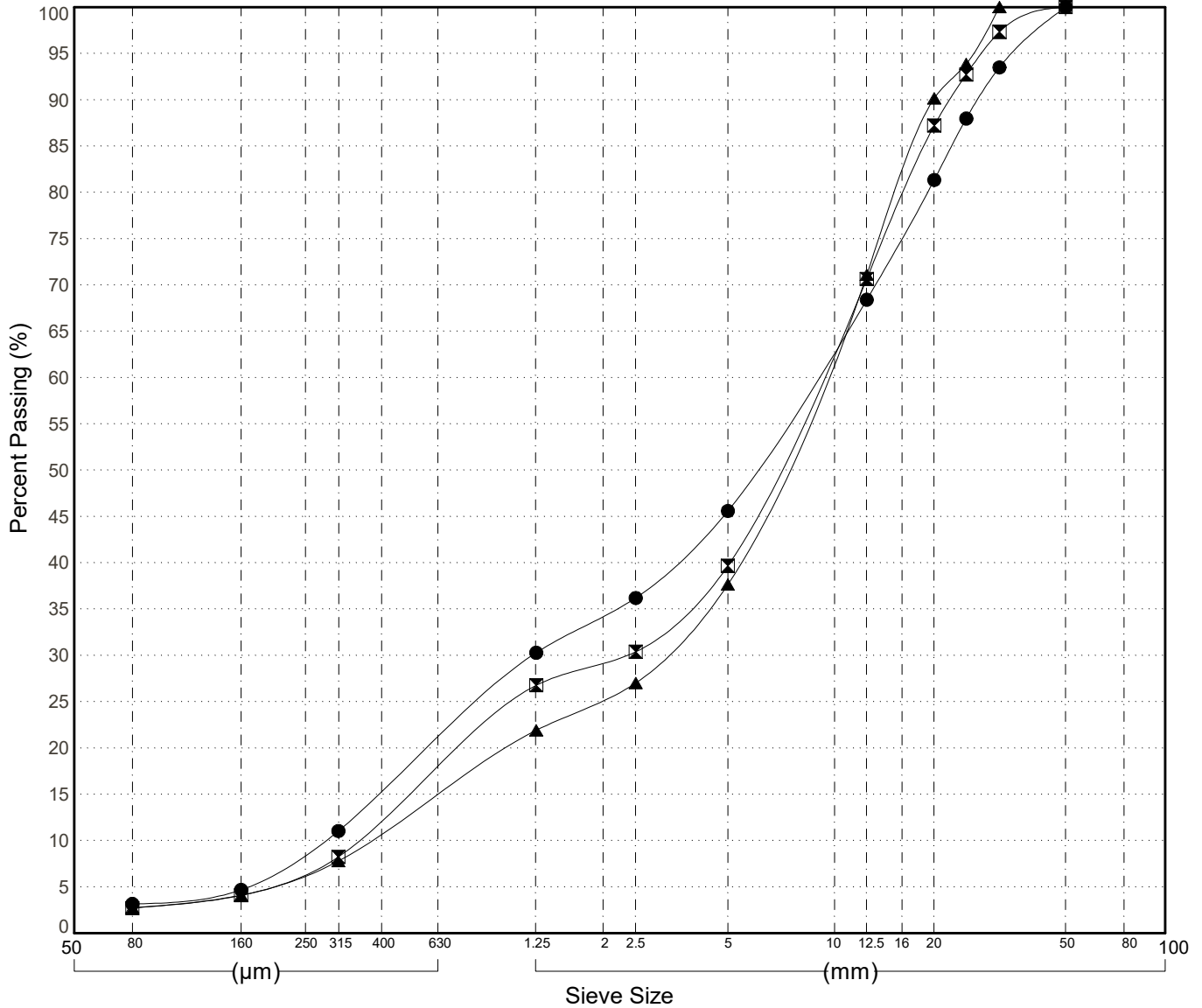
GRAIN SIZE ANALYSIS	Gravel Exploration Silver Trail	SOURCE/TP#: 919-6643
Gateway Drilling	Various Km	PROJECT NO: 552-202955-0206-5207
Auger	Coordinates:Z08V N7050127m E447744m	ELEVATION: m

Master Revised June 2017

Field #	Lab #	Depth	Classification	%H2O	LL	PL	PI	Cc	Cu	D10
● 034	034	0.5 to 0.7	POORLY GRADED GRAVEL with SAND(GP)	2.7	NP	NP	NP	0.6	31.0	0.28
☒ 035	035	2.0 to 2.2	WELL-GRADED GRAVEL with SAND(GW)	2.2	NP	NP	NP	1.7	25.0	0.36
▲ 036	036	3.9 to 4.1	WELL-GRADED GRAVEL with SAND(GW)	4.0	NP	NP	NP	2.5	23.2	0.39

Field #	Lab #	% PASSING	Sieve Size (mm)													% Breakdown				
			100.0	80.0	50.0	25.0	20.0	12.5	10.0	5.0	2.0	0.850	0.400	0.250	0.160	0.080	Gravel	Sand	Silt	Clay
●	034	034	100.0	100.0	100.0	88.0	81.3	68.4	63.1	45.6	34.3	24.9	15.2	8.9	4.7	3.2	54.4	42.4	3.2	
☒	035	035	100.0	100.0	100.0	92.7	87.2	70.7	63.5	39.7	29.2	21.6	12.3	6.8	4.1	2.7	60.3	37.0	2.7	
▲	036	036	100.0	100.0	100.0	93.9	90.1	71.1	63.4	37.6	25.4	18.0	10.8	6.5	4.1	2.7	62.4	34.9	2.7	

Silt	Sand			Gravel	
	Fine	Medium	Coarse	Fine	Coarse

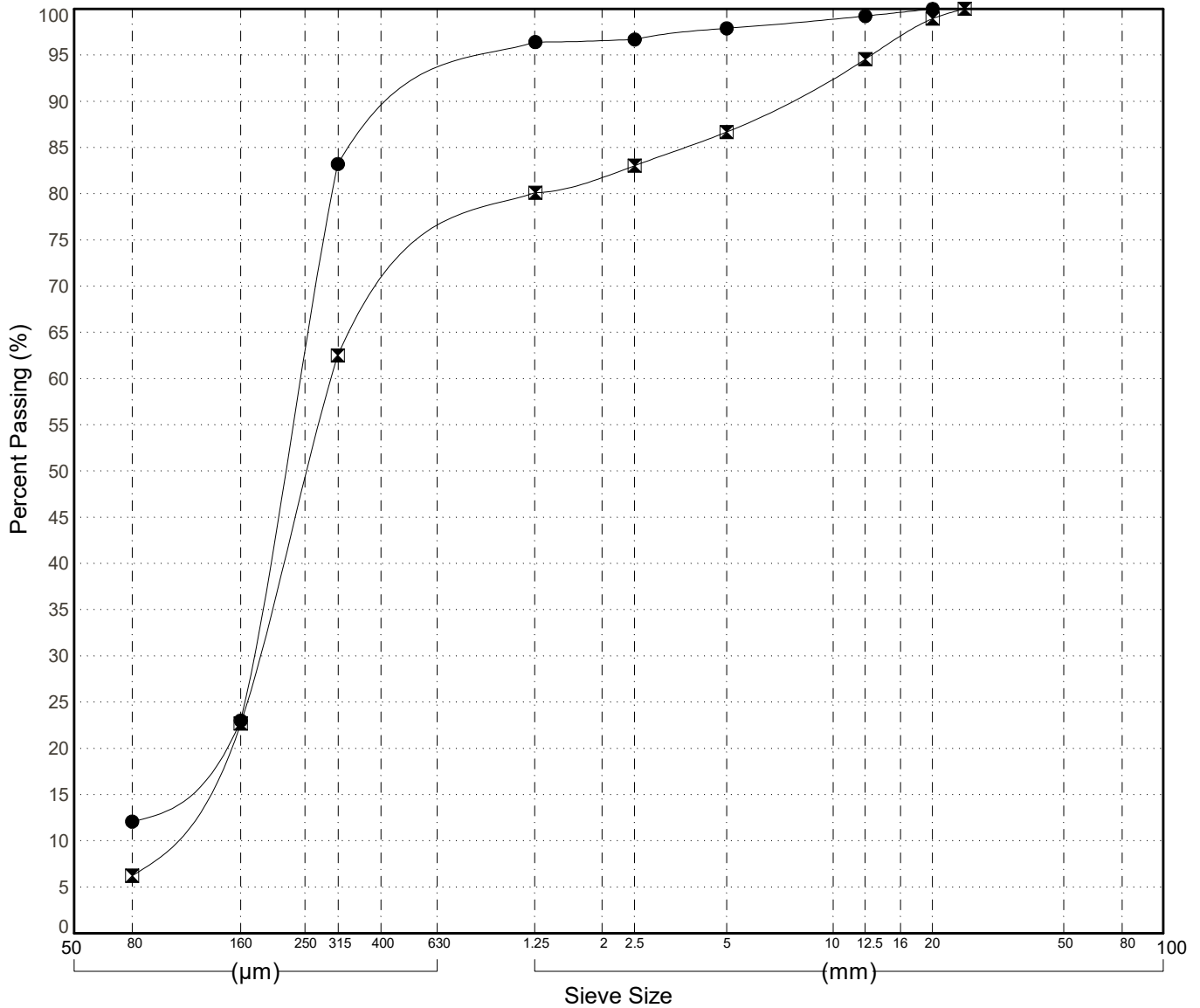


GRAIN SIZE ANALYSIS	Gravel Exploration Silver Trail	SOURCE/TP#: 919-6644
Gateway Drilling	Various Km	PROJECT NO: 552-202955-0206-5207
Auger	Coordinates:Z08V N7038743m E429980m	ELEVATION: m

Master Revised June 2017

Field #	Lab #	Depth	Classification	%H2O	LL	PL	PI	Cc	Cu	D10										
● 037	037	0.7 to 0.9	SILTY SAND(SM)	2.6	NP	NP	NP	1.9	3.7											
☒ 038	038	3.2 to 3.4	POORLY GRADED SAND with SILT(SP-SM)	3.6	NP	NP	NP	1.2	3.4	0.09										
Field #	Lab #	100.0	80.0	50.0	25.0	20.0	12.5	10.0	5.0	2.0	0.850	0.400	0.250	0.160	0.080	% Breakdown				
● 037	037	100.0	100.0	100.0	100.0	100.0	99.2	98.9	97.9	96.6	92.7	86.1	62.7	23.0	12.1	Gravel	Sand	Silt	Clay	
☒ 038	038	100.0	100.0	100.0	100.0	98.9	94.6	92.7	86.7	82.1	75.2	66.3	48.9	22.7	6.2	13.3	80.5	6.2	12.1	

Silt	Sand			Gravel	
	Fine	Medium	Coarse	Fine	Coarse



GRAIN SIZE ANALYSIS	Gravel Exploration Silver Trail	SOURCE/TP#: 919-6645
Gateway Drilling	Various Km	PROJECT NO: 552-202955-0206-5207
Auger	Coordinates:Z08V N7038673m E429798m	ELEVATION: m

Master Revised June 2017

Field #	Lab #	Depth	Classification	%H2O	LL	PL	PI	Cc	Cu	D10										
● 039	039	0.4 to 0.6	POORLY GRADED SAND with SILT(SP-SM)	2.1	NP	NP	NP	1.8	3.1											
☒ 040	040	3.4 to 3.6	POORLY GRADED SAND(SP)	2.7	NP	NP	NP	1.1	2.6	0.12										
Field #	Lab #	100.0	80.0	50.0	25.0	20.0	12.5	10.0	5.0	2.0	0.850	0.400	0.250	0.160	0.080	% Breakdown				
● 039	039	100.0	100.0	100.0	100.0	100.0	100.0	100.0	99.9	99.8	98.0	94.8	68.5	20.6	10.3	Gravel	Sand	Silt	Clay	
☒ 040	040	100.0	100.0	100.0	100.0	98.3	95.4	93.7	88.2	85.2	77.8	67.4	46.1	13.9	4.5	11.8	83.7		4.5	

