

SUBSURFACE EXPLORATION AND TEST REPORT		Alaska Highway		SOURCE/TP#: 921-5438					
Sidhu Trucking		Squanga Lake Exploration, 1328.5 RHS		PROJECT NO: 552-202177-0130-1-4					
Hitachi 250X		Coordinates: Z08N N6694931m E567439m		ELEVATION: m					
SAMPLE TYPE		<input type="checkbox"/> UNDISTURBED		<input type="checkbox"/> DCPT					
		<input type="checkbox"/> AUGER		<input type="checkbox"/> BULK					
		<input checked="" type="checkbox"/> SPT		<input type="checkbox"/> CORE					
ELEV. (m)		★ Percent Fines ★ ◆ Percent Sand ◆ ■ Percent Gravel ■		Sample Type	Sample #	SOIL SYMBOL	DCPT/SPT Blows/30cm	SOIL DESCRIPTION	Depth (m)
					001	gm		GRAVEL, silty with sand -Brown, damp -10-15% Cobbles, some boulders	1
					002	sm		-SAND, silty with gravel -Brown, wet -5% Cobbles	2
					003				3
								END of HOLE -Target depth reached	4
									5

SUBSURFACE EXPLORATION AND TEST REPORT		Alaska Highway		SOURCE/TP#: 921-5441					
Sidhu Trucking		Squanga Lake Exploration, 1328.5 RHS		PROJECT NO: 552-202177-0130-1-4					
Hitachi 250X		Coordinates: Z08N N6694764m E567200m		ELEVATION: m					
SAMPLE TYPE		<input type="checkbox"/> UNDISTURBED <input type="checkbox"/> DCPT <input checked="" type="checkbox"/> AUGER <input type="checkbox"/> BULK <input checked="" type="checkbox"/> SPT <input type="checkbox"/> CORE							
ELEV. (m)	PLASTIC M.C LIQUID 0 20 40 60 80 100	★ Percent Fines ★ ◆ Percent Sand ◆ ■ Percent Gravel ■		Sample Type	Sample #	SOIL SYMBOL	DCPT/SPT Blows/30cm	SOIL DESCRIPTION	Depth (m)
					007	gw		GRAVEL, well-graded with sand -Brown, loose, dry -15-20% Cobbles, some boulders	1
					008	gw		-Greyish brown -10-15% Cobbles, odd boulder	2
					009	gp		-Poorly graded	3
								END of HOLE -Target Depth Reached	4
									5

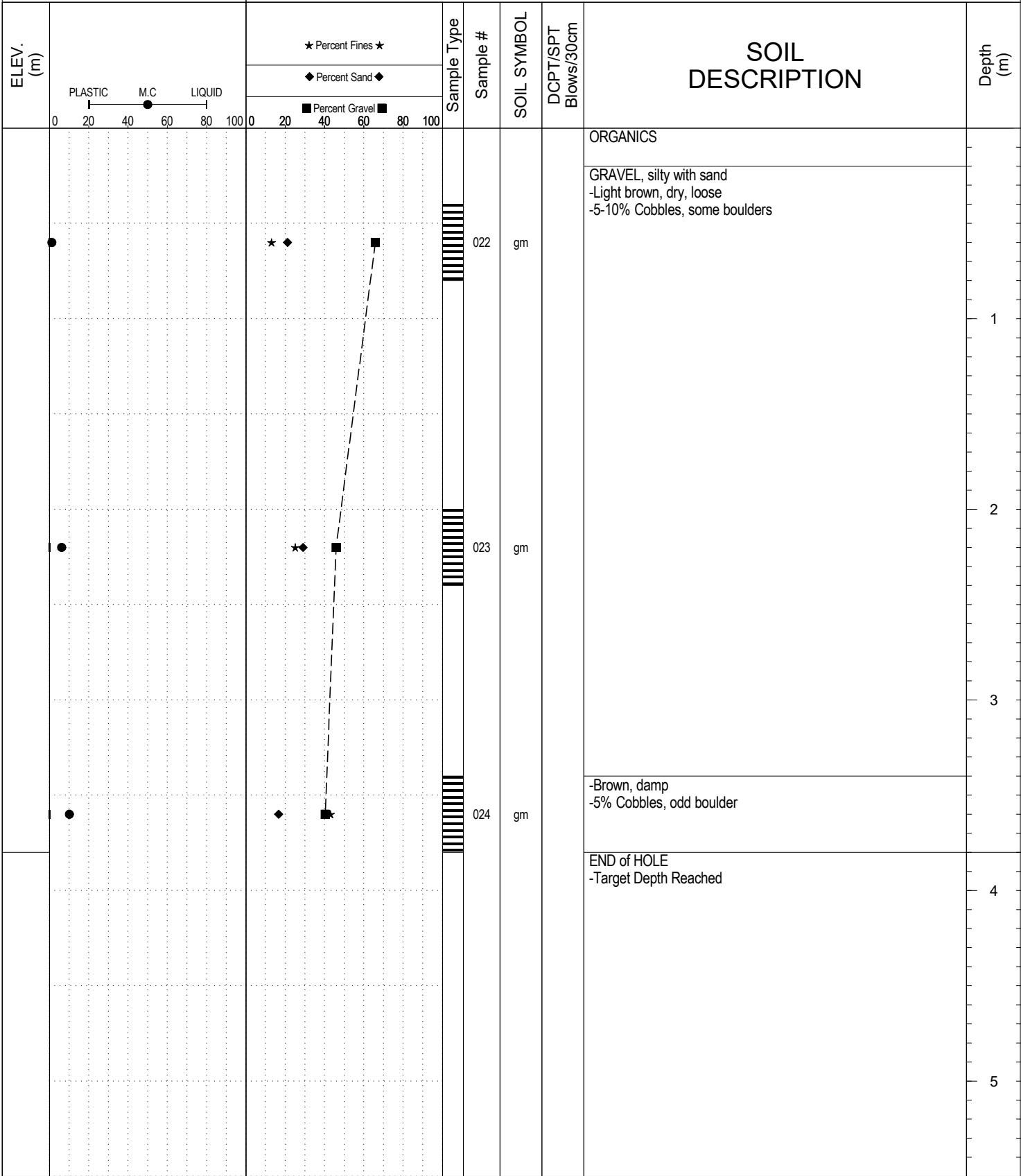
SUBSURFACE EXPLORATION AND TEST REPORT		Alaska Highway		SOURCE/TP#: 921-5442					
Sidhu Trucking		Squanga Lake Exploration, 1328.5 RHS		PROJECT NO: 552-202177-0130-1-4					
Hitachi 250X		Coordinates: Z08N N6694816m E567190m		ELEVATION: m					
SAMPLE TYPE		<input type="checkbox"/> UNDISTURBED	<input type="checkbox"/> DCPT	<input type="checkbox"/> AUGER	<input type="checkbox"/> BULK	<input checked="" type="checkbox"/> SPT	<input type="checkbox"/> CORE		
ELEV. (m)		★ Percent Fines ★		Sample Type	Sample #	SOIL SYMBOL	DCPT/SPT Blows/30cm	SOIL DESCRIPTION	Depth (m)
		◆ Percent Sand ◆							
0	20 40 60 80 100	0	20 40 60 80 100					ORGANICS	
					010	gm		GRAVEL, silty with sand -Dark brown, loose, damp -5-10 % Cobbles, some boulders	1
					011	gm		-Light brown, compact -10-15% Cobbles, Huge boulders	2
					012	sm		SAND, silty with gravel -Light brown, compact, damp -10-15% Cobbles, huge boulders	3
								END of HOLE -Target depth reached	4
									5
				LOGGED BY: G.Kennedy		Termination Depth: 4m			
				COMPILED BY: R.Stilwell		Complete: 9/6/2017 11:35:00 AM			
				REVIEWED BY:		Pit #: 105 C-10		Page 1 of 1	

SUBSURFACE EXPLORATION AND TEST REPORT		Alaska Highway		SOURCE/TP#: 921-5443					
Sidhu Trucking		Squanga Lake Exploration, 1328.5 RHS		PROJECT NO: 552-202177-0130-1-4					
Hitachi 250X		Coordinates: Z08N N6694880m E567174m		ELEVATION: m					
SAMPLE TYPE		<input type="checkbox"/> UNDISTURBED	<input type="checkbox"/> DCPT	<input type="checkbox"/> AUGER	<input type="checkbox"/> BULK	<input checked="" type="checkbox"/> SPT	<input type="checkbox"/> CORE		
ELEV. (m)		★ Percent Fines ★ ◆ Percent Sand ◆ ■ Percent Gravel ■		Sample Type	Sample #	SOIL SYMBOL	DCPT/SPT Blows/30cm	SOIL DESCRIPTION	Depth (m)
								ORGANICS	
					013	gp		GRAVEL, poorly graded with sand -Light brown, loose, dry -15-20% Cobbles	1
					014	gp		Silt Seam - 0.3m	2
					015	gw		-Odd boulder -Well-graded	3
								-END of HOLE, Target depth reached	4
									5

SUBSURFACE EXPLORATION AND TEST REPORT		Alaska Highway		SOURCE/TP#: 921-5445					
Sidhu Trucking		Squanga Lake Exploration, 1328.5 RHS		PROJECT NO: 552-202177-0130-1-4					
Hitachi 250X		Coordinates: Z08N N6694890m E567251m		ELEVATION: m					
SAMPLE TYPE		<input type="checkbox"/> UNDISTURBED <input type="checkbox"/> DCPT <input type="checkbox"/> AUGER <input checked="" type="checkbox"/> BULK <input checked="" type="checkbox"/> SPT <input type="checkbox"/> CORE							
ELEV. (m)	PLASTIC M.C LIQUID 0 20 40 60 80 100	★ Percent Fines ★ ◆ Percent Sand ◆ ■ Percent Gravel ■		Sample Type	Sample #	SOIL SYMBOL	DCPT/SPT Blows/30cm	SOIL DESCRIPTION	Depth (m)
		0 20 40 60 80 100							
								ORGANICS	
					019	gw-gm		GRAVEL, well-graded with silt and sand -Light brown, dry, loose -10-15% Cobbles	1
					020	gp-gm		-Poorly graded -Greyish brown -5-10% Cobbles, some boulders	2
					021	gw-gm		-Well-graded	3
								END of HOLE -Target Depth Reached	4
									5
		LOGGED BY: G.Kennedy		Termination Depth: 4m					
		COMPILED BY: R.Stilwell		Complete: 9/6/2017 1:25:00 PM					
		REVIEWED BY:		Pit #: 105 C-10 Page 1 of 1					

SUBSURFACE EXPLORATION AND TEST REPORT		Alaska Highway	SOURCE/TP#: 921-5446
Sidhu Trucking		Squanga Lake Exploration, 1328.5 RHS	PROJECT NO: 552-202177-0130-1-4
Hitachi 250X		Coordinates: Z08N N6694906m E567333m	ELEVATION: m

SAMPLE TYPE UNDISTURBED DCPT AUGER BULK SPT CORE



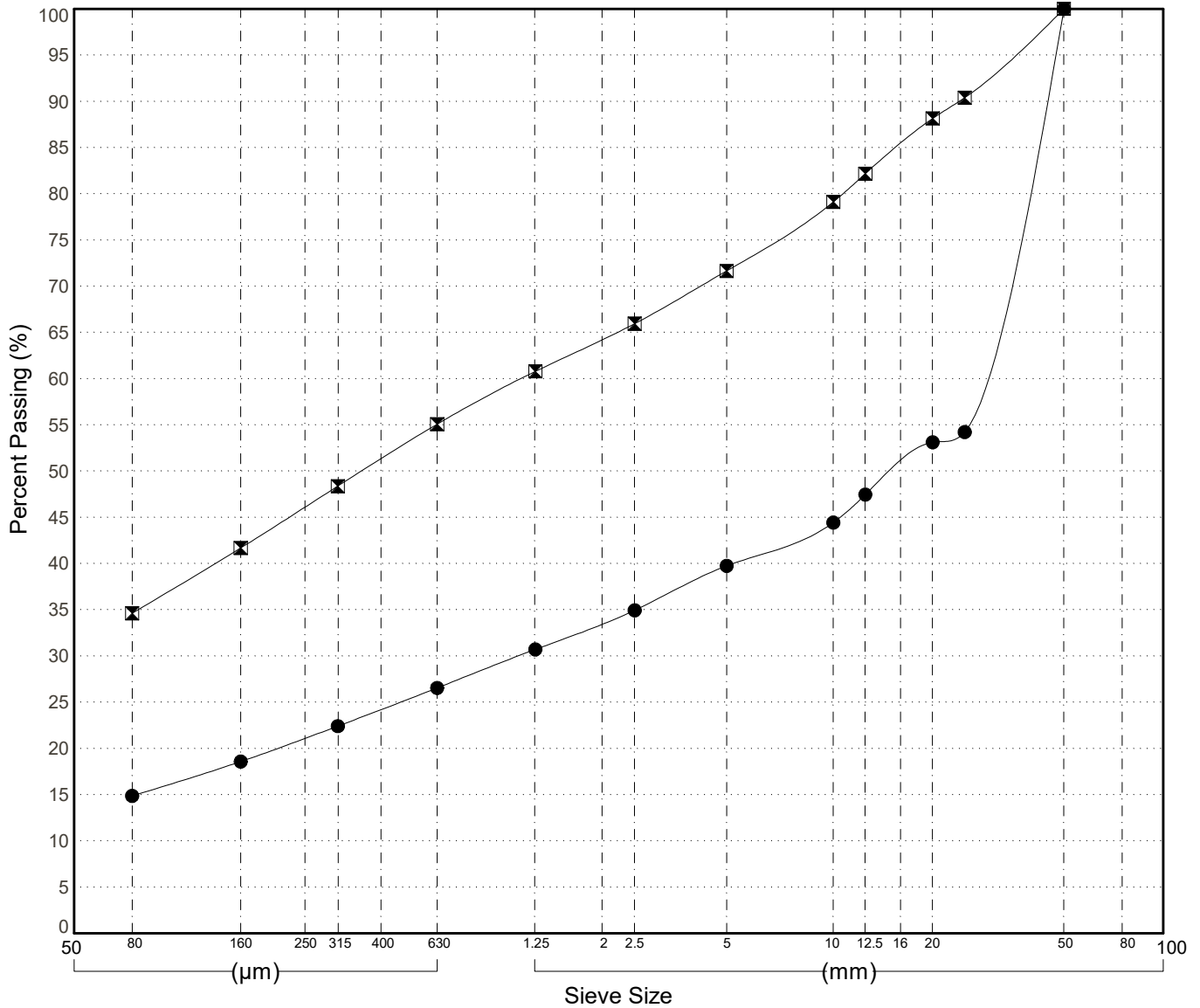
SUBSURFACE EXPLORATION AND TEST REPORT		Alaska Highway		SOURCE/TP#: 921-5447				
Sidhu Trucking		Squanga Lake Exploration, 1328.5 RHS		PROJECT NO: 552-202177-0130-1-4				
Hitachi 250X		Coordinates: Z08N N6694959m E567319m		ELEVATION: m				
SAMPLE TYPE		<input type="checkbox"/> UNDISTURBED <input type="checkbox"/> DCPT <input checked="" type="checkbox"/> AUGER <input type="checkbox"/> BULK <input checked="" type="checkbox"/> SPT <input type="checkbox"/> CORE						
ELEV. (m)	PLASTIC M.C LIQUID 0 20 40 60 80 100		★ Percent Fines ★ ◆ Percent Sand ◆ ■ Percent Gravel ■		SOIL SYMBOL	DCPT/SPT Blows/30cm	SOIL DESCRIPTION	Depth (m)
	0 20 40 60 80 100		0 20 40 60 80 100					
							ORGANICS	
					025	sm	SAND, silty with gravel -Light brown, loose, dry -5% Cobbles	
					026	gm	GRAVEL, silty with sand -5-10% Cobbles	1
								2
					027	ml	SILT -Light brown	3
							END of HOLE -Target depth reached	4
								5

GRAIN SIZE ANALYSIS	Squanga Lake Exploration	SOURCE/TP#: 921-5438
Sidhu Trucking	1328.5 RHS	PROJECT NO: 552-202177-0130-1-4
Hitachi 250X	Coordinates:Z08N N6694931m E567439m	ELEVATION: m

Master Revised June 2017

Field #	Lab #	Depth	Classification													%H2O	LL	PL	PI	Cc	Cu	D10
● 001	1809	0.2 to 0.6	SILTY GRAVEL with SAND(GM)													1.1	NP	NP	NP			
☒ 002	1810	1.4 to 1.8	SILTY SAND with GRAVEL(SM)													9.2	NP	NP	NP			
Field #	Lab #	%PASSING	100.0	80.0	50.0	25.0	20.0	12.5	10.0	5.0	2.0	0.850	0.400	0.250	0.160	0.080	% Breakdown					
			Gravel	Sand	Silt	Clay																
● 001	1809	100.0	100.0	100.0	54.2	53.1	47.5	44.4	39.8	33.6	28.4	24.2	21.1	18.6	14.9	60.2	24.9	14.9				
☒ 002	1810	100.0	100.0	100.0	90.4	88.1	82.2	79.1	71.7	64.3	57.6	51.3	46.1	41.7	34.6	28.3	37.0	34.6				

Silt	Sand			Gravel	
	Fine	Medium	Coarse	Fine	Coarse



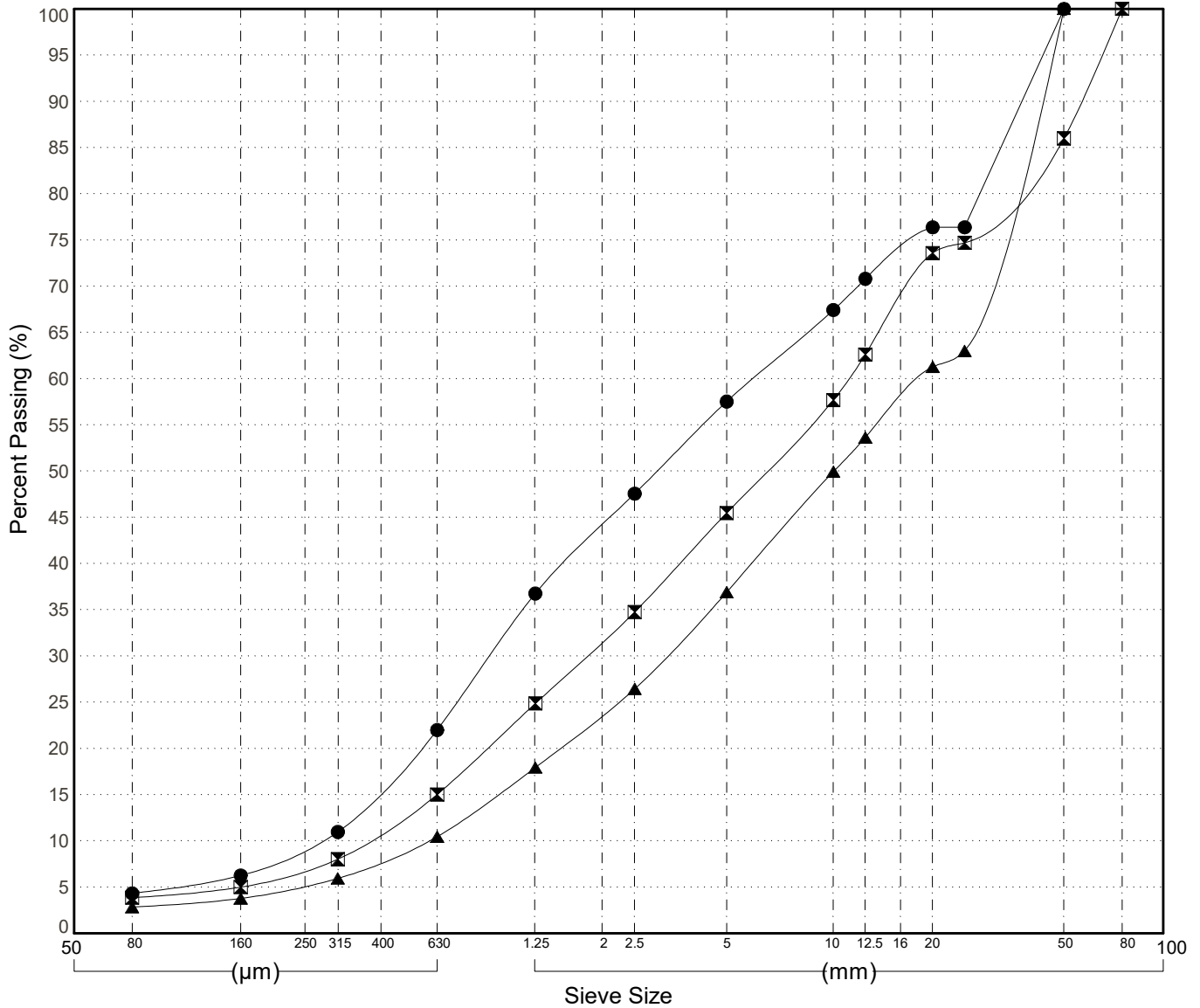
GRAIN SIZE ANALYSIS	Squanga Lake Exploration	SOURCE/TP#: 921-5440
Sidhu Trucking	1328.5 RHS	PROJECT NO: 552-202177-0130-1-4
Hitachi 250X	Coordinates:Z08N N6694828m E567288m	ELEVATION: m

Master Revised June 2017

Field #	Lab #	Depth	Classification	%H2O	LL	PL	PI	Cc	Cu	D10
● 004	1812	0.2 to 0.6	POORLY GRADED SAND with GRAVEL(SP)	0.9	NP	NP	NP	0.5	20.9	0.27
☒ 005	1813	1.6 to 2.0	POORLY GRADED GRAVEL with SAND(GP)	0.5	NP	NP	NP	0.8	29.0	0.38
▲ 006	1814	2.6 to 3.0	POORLY GRADED GRAVEL with SAND(GP)	0.0	NP	NP	NP	0.9	31.4	0.59

Field #	Lab #	%PASSING	Sieve Size (mm)													% Breakdown				
			100.0	80.0	50.0	25.0	20.0	12.5	10.0	5.0	2.0	0.850	0.400	0.250	0.160	0.080	Gravel	Sand	Silt	Clay
●	004	1812	100.0	100.0	100.0	76.4	76.4	70.8	67.4	57.5	44.1	28.4	15.7	9.4	6.3	4.3	42.5	53.2		4.3
☒	005	1813	100.0	100.0	86.0	74.7	73.6	62.6	57.7	45.5	31.6	19.3	11.0	7.0	5.0	3.8	54.5	41.6		3.8
▲	006	1814	100.0	100.0	100.0	63.0	61.3	53.6	49.9	36.9	23.7	13.7	7.9	5.2	3.8	2.8	63.1	34.1		2.8

Silt	Sand			Gravel	
	Fine	Medium	Coarse	Fine	Coarse



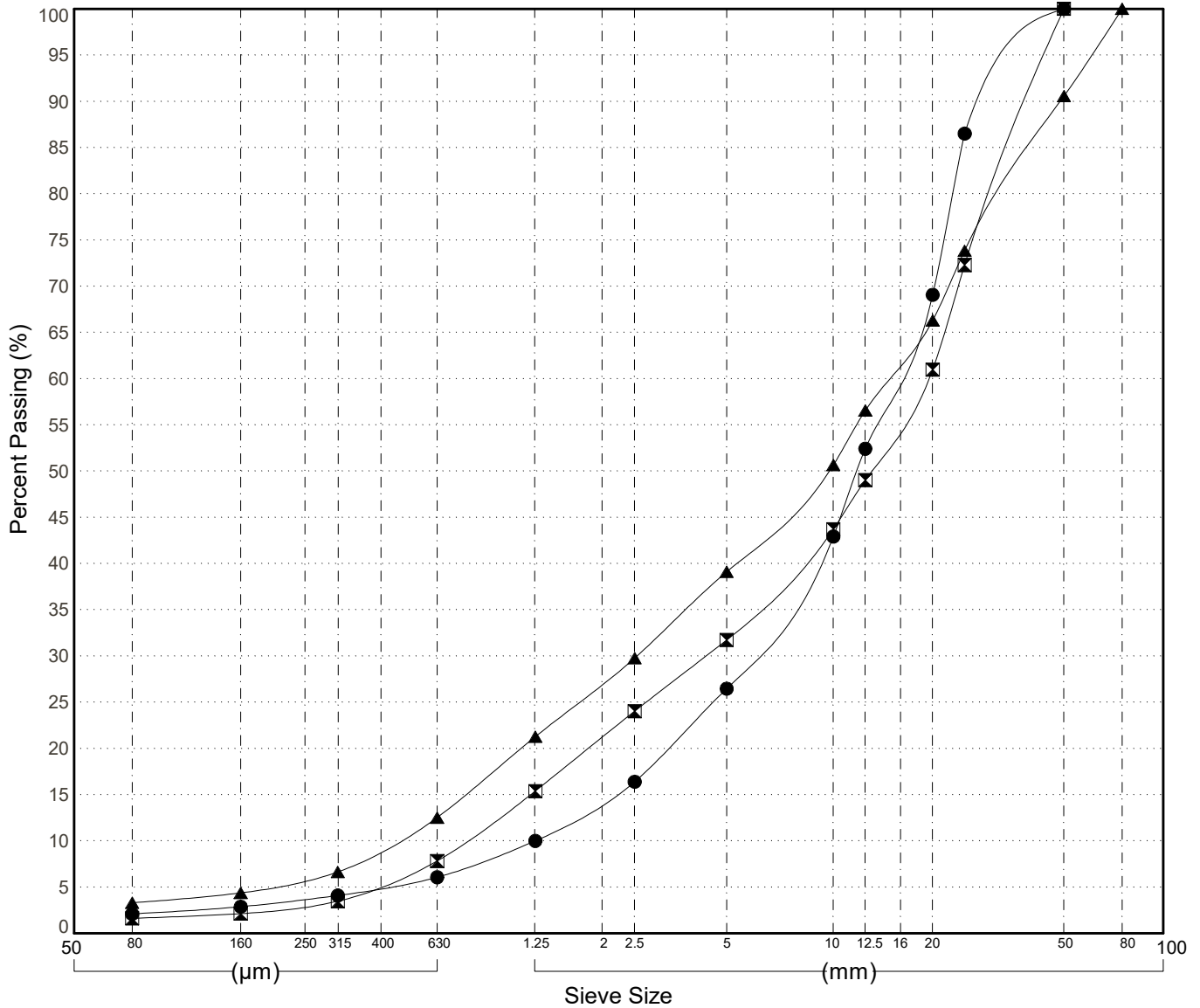
GRAIN SIZE ANALYSIS	Squanga Lake Exploration	SOURCE/TP#: 921-5441
Sidhu Trucking	1328.5 RHS	PROJECT NO: 552-202177-0130-1-4
Hitachi 250X	Coordinates:Z08N N6694764m E567200m	ELEVATION: m

Master Revised June 2017

Field #	Lab #	Depth	Classification	%H2O	LL	PL	PI	Cc	Cu	D10
● 007	1815	0.2 to 0.6	WELL-GRADED GRAVEL with SAND(GW)	0.1	NP	NP	NP	1.6	12.4	1.25
☒ 008	1816	1.2 to 1.6	WELL-GRADED GRAVEL with SAND(GW)	0.1	NP	NP	NP	1.1	25.1	0.77
▲ 009	1817	3.4 to 3.8	POORLY GRADED GRAVEL with SAND(GP)	0.2	NP	NP	NP	0.9	31.5	0.47

Field #	Lab #	%PASSING	Sieve Size (mm)													% Breakdown				
			100.0	80.0	50.0	25.0	20.0	12.5	10.0	5.0	2.0	0.850	0.400	0.250	0.160	0.080	Gravel	Sand	Silt	Clay
●	007	1815	100.0	100.0	100.0	86.5	69.1	52.4	42.9	26.5	14.3	7.8	4.9	3.7	2.9	2.1	73.5	24.4	2.1	
☒	008	1816	100.0	100.0	100.0	72.3	61.0	49.0	43.7	31.7	21.2	11.1	5.3	3.0	2.1	1.6	68.3	30.1	1.6	
▲	009	1817	100.0	100.0	90.6	73.8	66.3	56.5	50.7	39.1	27.0	16.3	9.2	5.9	4.4	3.3	60.9	35.8	3.3	

Silt	Sand			Gravel	
	Fine	Medium	Coarse	Fine	Coarse



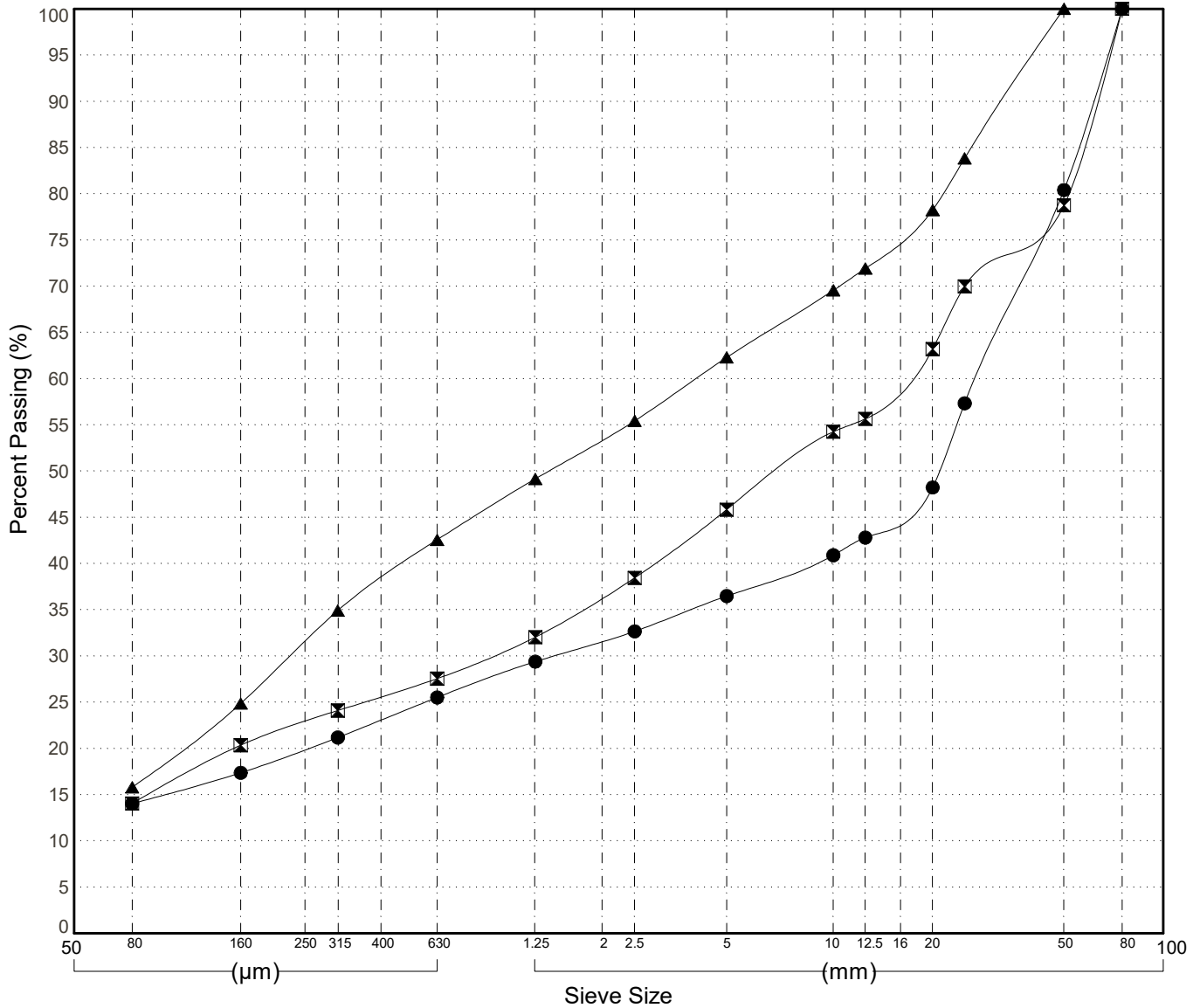
GRAIN SIZE ANALYSIS	Squanga Lake Exploration	SOURCE/TP#: 921-5442
Sidhu Trucking	1328.5 RHS	PROJECT NO: 552-202177-0130-1-4
Hitachi 250X	Coordinates:Z08N N6694816m E567190m	ELEVATION: m

Master Revised June 2017

Field #	Lab #	Depth	Classification	%H2O	LL	PL	PI	Cc	Cu	D10
● 010	1818	0.6 to 1.0	SILTY GRAVEL with SAND(GM)	1.6	NP	NP	NP			
☒ 011	1819	1.8 to 2.2	SILTY GRAVEL with SAND(GM)	3.2	NP	NP	NP			
▲ 012	1820	3.4 to 3.8	SILTY SAND with GRAVEL(SM)	5.9	NP	NP	NP			

Field #	Lab #	%PASSING	100.0	80.0	50.0	25.0	20.0	12.5	10.0	5.0	2.0	0.850	0.400	0.250	0.160	0.080	% Breakdown		
			Gravel	Sand	Silt	Clay													
●	010	1818	100.0	100.0	80.4	57.3	48.2	42.8	40.9	36.5	31.6	27.2	23.1	19.9	17.4	14.0	63.5	22.5	14.0
☒	011	1819	100.0	100.0	78.7	70.0	63.2	55.6	54.3	45.8	36.4	29.5	25.6	22.8	20.3	14.0	54.2	31.8	14.0
▲	012	1820	100.0	100.0	100.0	83.8	78.2	71.9	69.6	62.3	53.4	45.4	38.2	31.5	24.9	15.8	37.7	46.5	15.8

Silt	Sand			Gravel	
	Fine	Medium	Coarse	Fine	Coarse



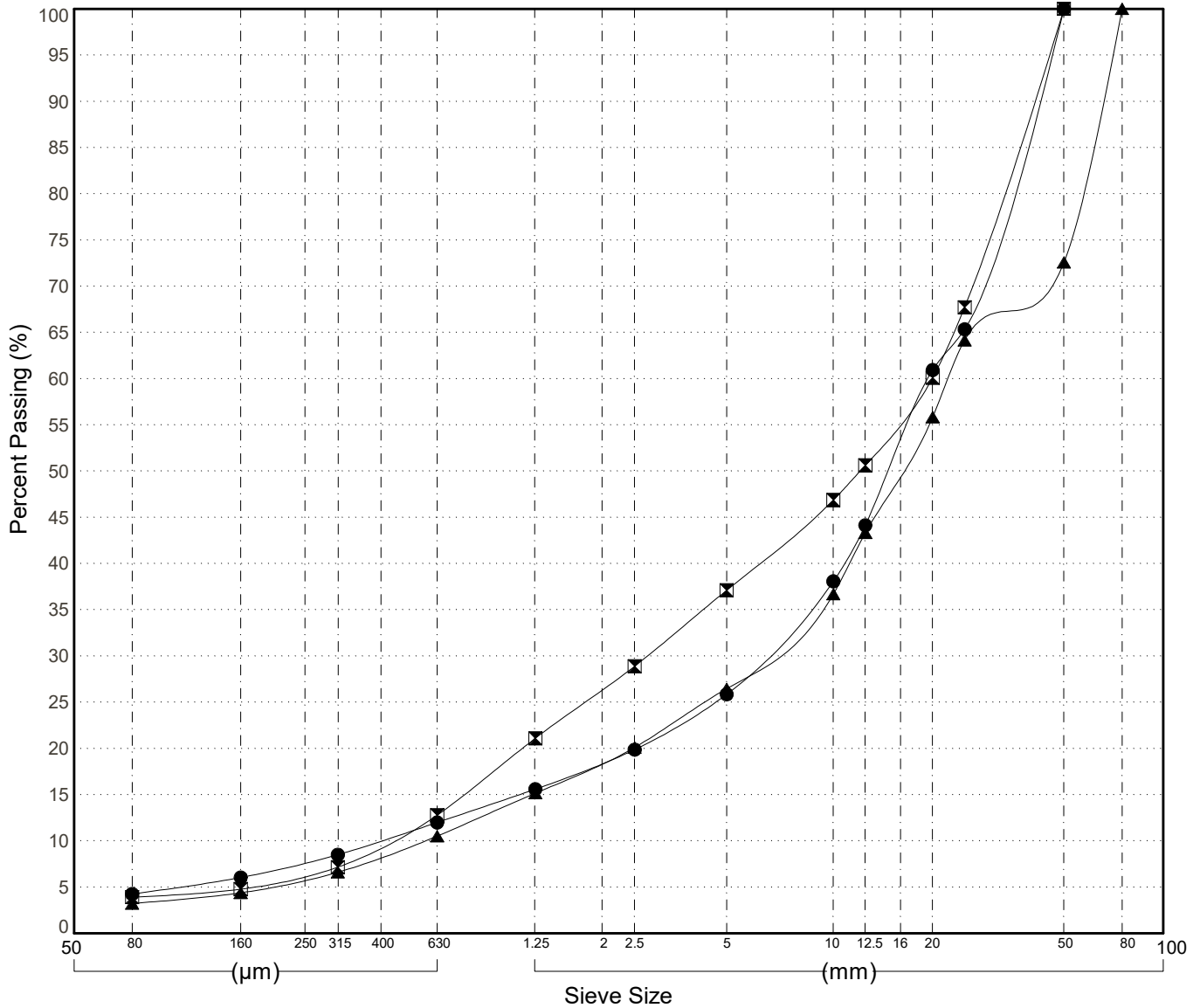
GRAIN SIZE ANALYSIS	Squanga Lake Exploration	SOURCE/TP#: 921-5443
Sidhu Trucking	1328.5 RHS	PROJECT NO: 552-202177-0130-1-4
Hitachi 250X	Coordinates:Z08N N6694880m E567174m	ELEVATION: m

Master Revised June 2017

Field #	Lab #	Depth	Classification	%H2O	LL	PL	PI	Cc	Cu	D10
● 013	1821	0.4 to 0.8	POORLY GRADED GRAVEL with SAND(GP)	0.2	NP	NP	NP	4.5	45.9	0.42
☒ 014	1822	1.8 to 2.2	POORLY GRADED GRAVEL with SAND(GP)	0.3	NP	NP	NP	0.8	44.5	0.45
▲ 015	1823	3.4 to 3.8	WELL-GRADED GRAVEL with SAND(GW)	0.1	NP	NP	NP	2.9	38.8	0.58

Field #	Lab #	%PASSING	100.0	80.0	50.0	25.0	20.0	12.5	10.0	5.0	2.0	0.850	0.400	0.250	0.160	0.080	% Breakdown			
			Gravel	Sand	Silt	Clay														
●	013	1821	100.0	100.0	100.0	65.3	60.9	44.1	38.1	25.8	18.5	13.6	10.0	7.7	6.0	4.2	74.2	21.6	4.2	
☒	014	1822	100.0	100.0	100.0	67.7	60.1	50.6	46.9	37.1	26.4	16.4	9.6	6.3	4.8	3.9	62.9	33.2	3.9	
▲	015	1823	100.0	100.0	72.6	64.2	55.8	43.3	36.7	26.5	18.5	12.5	8.3	5.8	4.4	3.2	73.5	23.2	3.2	

Silt	Sand			Gravel	
	Fine	Medium	Coarse	Fine	Coarse



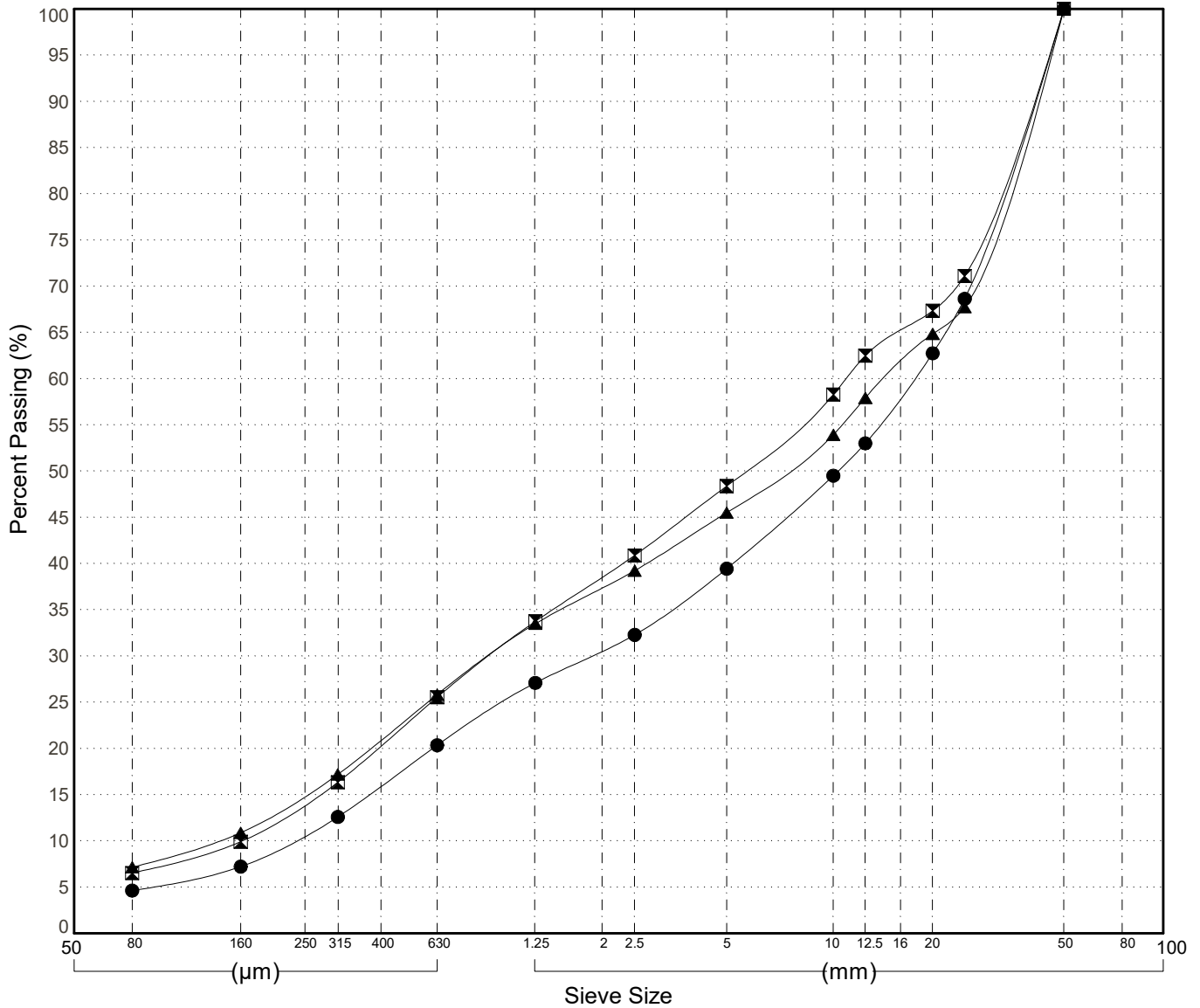
GRAIN SIZE ANALYSIS	Squanga Lake Exploration	SOURCE/TP#: 921-5444
Sidhu Trucking	1328.5 RHS	PROJECT NO: 552-202177-0130-1-4
Hitachi 250X	Coordinates:Z08N N6694951m E567197m	ELEVATION: m

Master Revised June 2017

Field #	Lab #	Depth	Classification	%H2O	LL	PL	PI	Cc	Cu	D10
● 016	1824	0.4 to 0.8	POORLY GRADED GRAVEL with SAND(GP)	0.1	NP	NP	NP	0.9	77.1	0.23
☒ 017	1825	2.0 to 2.4	POORLY GRADED GRAVEL with SILT and SAND(GP-GM)	0.4	NP	NP	NP	0.5	67.9	0.16
▲ 018	1826	3.4 to 3.8	POORLY GRADED GRAVEL with SILT and SAND(GP-GM)	0.2	NP	NP	NP	0.4	107.6	0.13

Field #	Lab #	% PASSING														% Breakdown				
			100.0	80.0	50.0	25.0	20.0	12.5	10.0	5.0	2.0	0.850	0.400	0.250	0.160	0.080	Gravel	Sand	Silt	Clay
●	016	1824	100.0	100.0	100.0	68.6	62.7	53.0	49.5	39.4	30.6	23.3	15.9	10.8	7.2	4.6	60.6	34.8	4.6	
☒	017	1825	100.0	100.0	100.0	71.1	67.3	62.5	58.3	48.4	38.6	29.1	20.3	14.1	9.9	6.5	51.6	41.9	6.5	
▲	018	1826	100.0	100.0	100.0	67.7	64.8	57.9	53.9	45.5	37.4	29.2	20.9	15.0	10.9	7.1	54.5	38.4	7.1	

Silt	Sand			Gravel	
	Fine	Medium	Coarse	Fine	Coarse



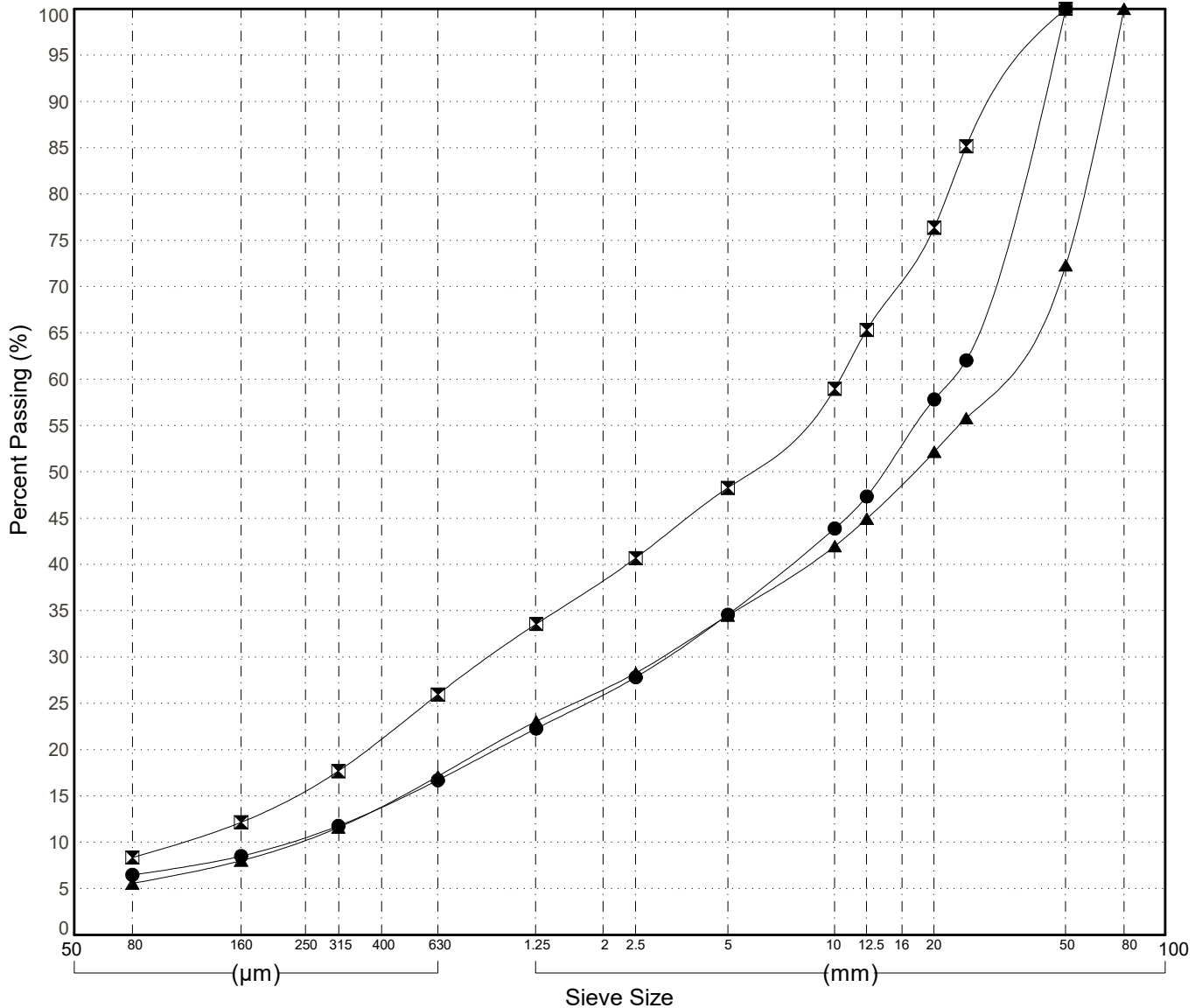
GRAIN SIZE ANALYSIS	Squanga Lake Exploration	SOURCE/TP#: 921-5445
Sidhu Trucking	1328.5 RHS	PROJECT NO: 552-202177-0130-1-4
Hitachi 250X	Coordinates:Z08N N6694890m E567251m	ELEVATION: m

Master Revised June 2017

Field #	Lab #	Depth	Classification	%H2O	LL	PL	PI	Cc	Cu	D10
● 019	1827	0.4 to 0.8	WELL-GRADED GRAVEL with SILT and SAND(GW-GM)	0.4	NP	NP	NP	1.9	102.9	0.22
☒ 020	1828	2.0 to 2.4	POORLY GRADED GRAVEL with SILT and SAND(GP-GM)	0.4	NP	NP	NP	0.8	99.7	0.10
▲ 021	1829	3.4 to 3.8	WELL-GRADED GRAVEL with SILT and SAND(GW-GM)	0.1	NP	NP	NP	1.3	128.1	0.23

Field #	Lab #	% PASSING														% Breakdown				
			100.0	80.0	50.0	25.0	20.0	12.5	10.0	5.0	2.0	0.850	0.400	0.250	0.160	0.080	Gravel	Sand	Silt	Clay
●	019	1827	100.0	100.0	100.0	62.0	57.8	47.3	43.9	34.6	26.0	19.1	13.9	10.7	8.5	6.5	65.4	28.1		6.5
☒	020	1828	100.0	100.0	100.0	85.2	76.4	65.3	59.0	48.3	38.4	29.3	21.3	15.8	12.2	8.4	51.7	39.9		8.4
▲	021	1829	100.0	100.0	72.3	55.8	52.2	44.9	42.0	34.5	26.6	19.7	14.0	10.4	8.0	5.6	65.5	28.9		5.6

Silt	Sand			Gravel	
	Fine	Medium	Coarse	Fine	Coarse



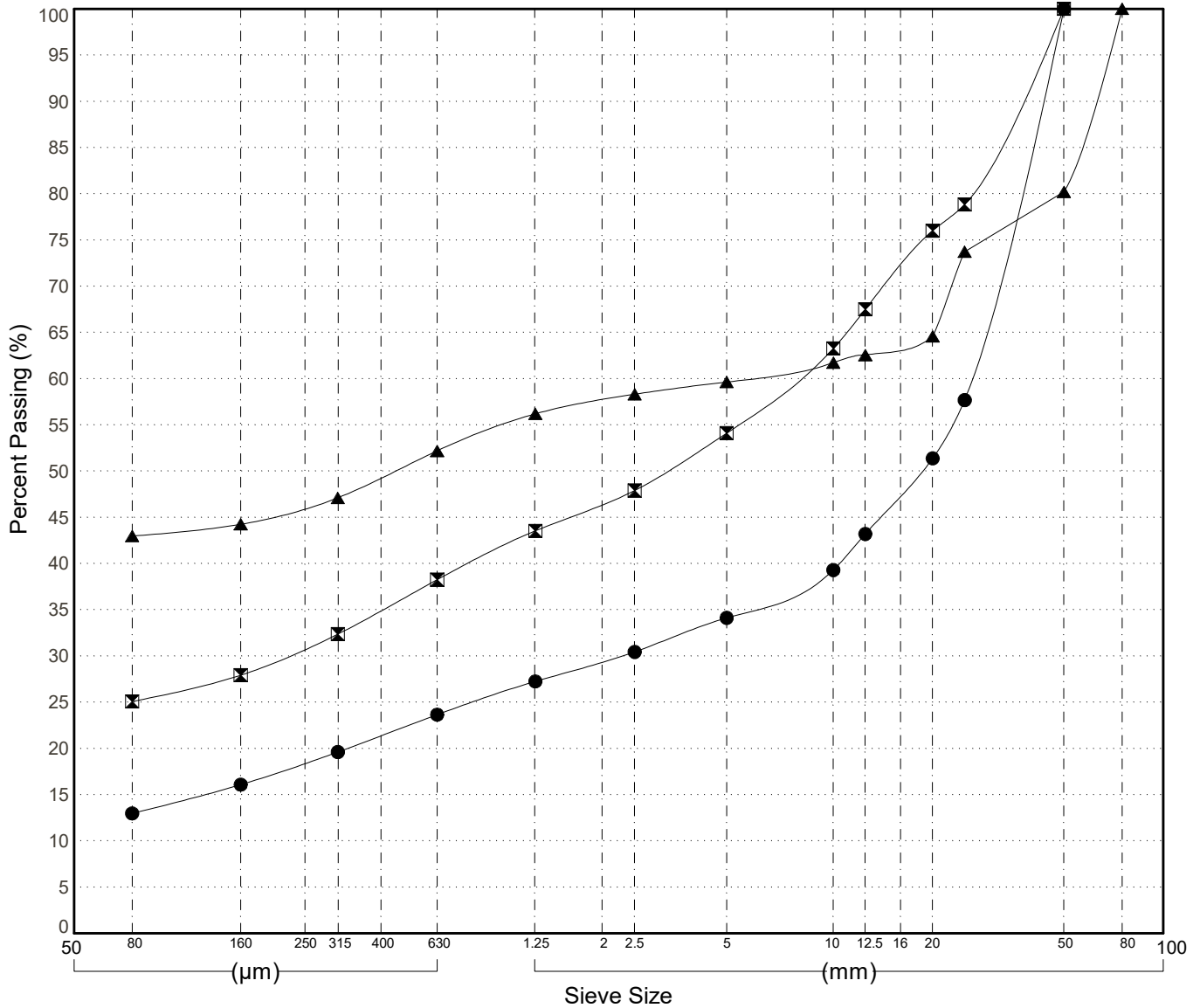
GRAIN SIZE ANALYSIS	Squanga Lake Exploration	SOURCE/TP#: 921-5446
Sidhu Trucking	1328.5 RHS	PROJECT NO: 552-202177-0130-1-4
Hitachi 250X	Coordinates:Z08N N6694906m E567333m	ELEVATION: m

Master Revised June 2017

Field #	Lab #	Depth	Classification	%H2O	LL	PL	PI	Cc	Cu	D10
● 022	1830	0.4 to 0.8	SILTY GRAVEL with SAND(GM)	1.2	NP	NP	NP			
☒ 023	1831	2.0 to 2.4	SILTY GRAVEL with SAND(GM)	6.2	NP	NP	NP			
▲ 024	1832	3.4 to 3.8	SILTY GRAVEL with SAND(GM)	10.1	NP	NP	NP			

Field #	Lab #	% PASSING	100.0	80.0	50.0	25.0	20.0	12.5	10.0	5.0	2.0	0.850	0.400	0.250	0.160	0.080	% Breakdown		
			Gravel	Sand	Silt	Clay													
●	022	1830	100.0	100.0	100.0	57.7	51.4	43.2	39.3	34.1	29.4	25.2	21.4	18.4	16.1	13.0	65.9	21.2	13.0
☒	023	1831	100.0	100.0	100.0	78.8	76.0	67.5	63.3	54.1	46.5	40.6	34.9	30.8	27.9	25.1	45.9	29.0	25.1
▲	024	1832	100.0	100.0	80.2	73.7	64.6	62.5	61.7	59.6	57.6	53.9	49.3	46.1	44.2	43.0	40.4	16.7	43.0

Silt	Sand			Gravel	
	Fine	Medium	Coarse	Fine	Coarse

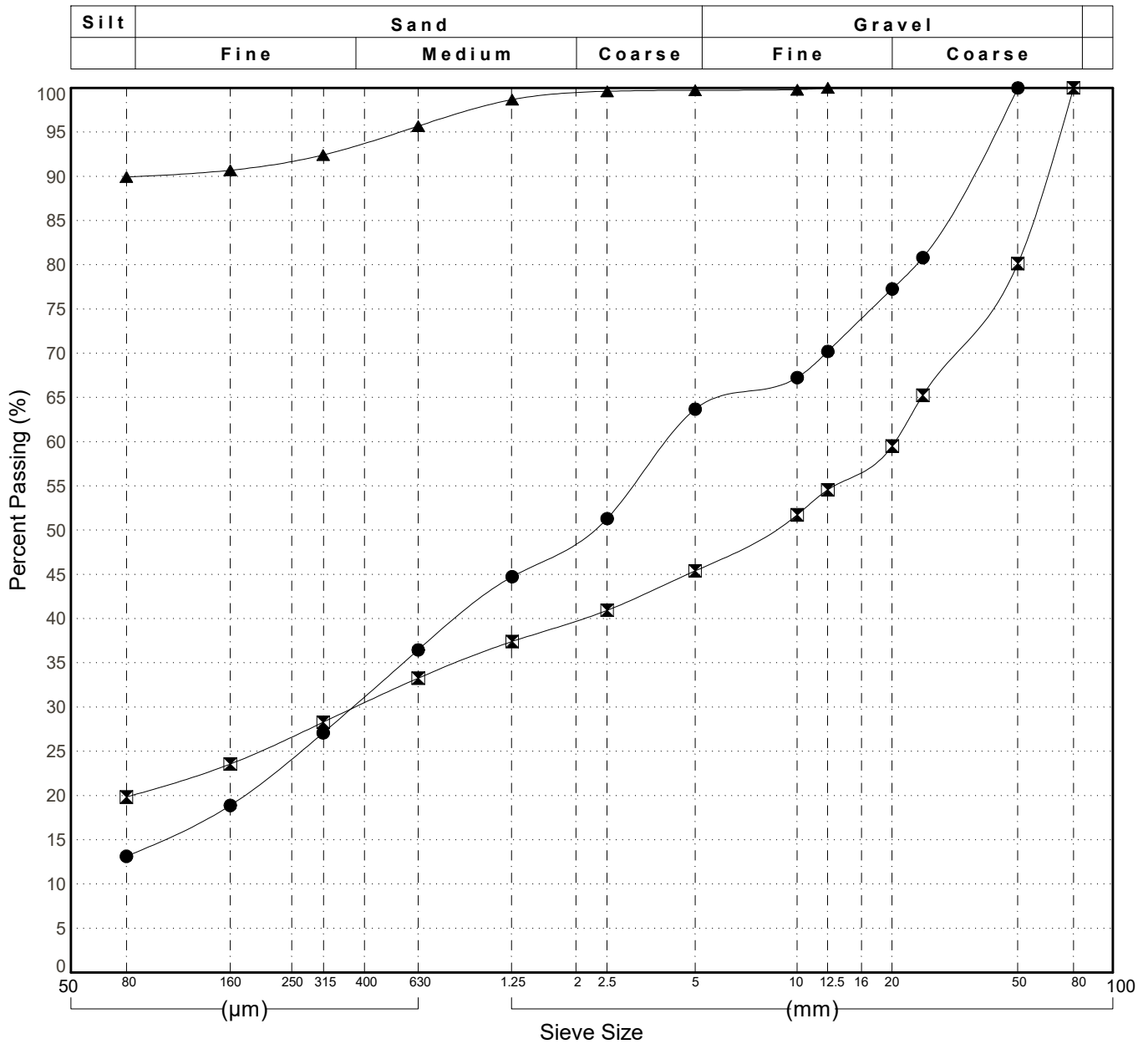


GRAIN SIZE ANALYSIS	Squanga Lake Exploration	SOURCE/TP#: 921-5447
Sidhu Trucking	1328.5 RHS	PROJECT NO: 552-202177-0130-1-4
Hitachi 250X	Coordinates:Z08N N6694959m E567319m	ELEVATION: m

Master Revised June 2017

Field #	Lab #	Depth	Classification	%H2O	LL	PL	PI	Cc	Cu	D10
● 025	1833	0.4 to 0.8	SILTY SAND with GRAVEL(SM)	0.8	NP	NP	NP			
☒ 026	1834	1.0 to 1.4	SILTY GRAVEL with SAND(GM)	3.0	NP	NP	NP			
▲ 027	1835	2.8 to 3.2	SILT(ML)	21.5	NP	NP	NP			

Field #	Lab #	% PASSING	100.0	80.0	50.0	25.0	20.0	12.5	10.0	5.0	2.0	0.850	0.400	0.250	0.160	0.080	% Breakdown			
			Gravel	Sand	Silt	Clay														
●	025	1833	100.0	100.0	100.0	80.8	77.3	70.2	67.3	63.7	49.2	40.1	31.1	24.3	18.9	13.1	36.3	50.6	13.1	
☒	026	1834	100.0	100.0	80.2	65.3	59.5	54.6	51.7	45.4	39.8	35.1	30.4	26.7	23.6	19.8	54.6	25.6	19.8	
▲	027	1835	100.0	100.0	100.0	100.0	100.0	99.8	99.7	99.3	97.0	93.8	91.8	90.7	89.9		0.3	9.8	89.9	



GRAIN SIZE ANALYSIS	Squanga Lake Exploration	SOURCE/TP#: 921-5448
Sidhu Trucking	1328.5 RHS	PROJECT NO: 552-202177-0130-1-4
Hitachi 250X	Coordinates:Z08N N6694976m E567471m	ELEVATION: m

Master Revised June 2017

Field #	Lab #	Depth	Classification											%H2O	LL	PL	PI	Cc	Cu	D10
● 028	1836	0.2 to 0.6	SILTY GRAVEL(GM)											7.4	NP	NP	NP			
☒ 029	1837	1.2 to 1.6	SILT(ML)											21.5	NP	NP	NP			
Field #	Lab #	% PASSING	100.0	80.0	50.0	25.0	20.0	12.5	10.0	5.0	2.0	0.850	0.400	0.250	0.160	0.080	% Breakdown			
● 028	1836		100.0	100.0	100.0	62.9	62.9	59.0	57.7	55.8	53.4	51.4	49.9	48.7	47.7	46.3	Gravel	Sand	Silt	Clay
☒ 029	1837		100.0	100.0	100.0	100.0	100.0	100.0	100.0	100.0	99.6	99.0	98.1	97.5	97.0	96.5	0.0	3.5		46.3

