



LORAX
ENVIRONMENTAL

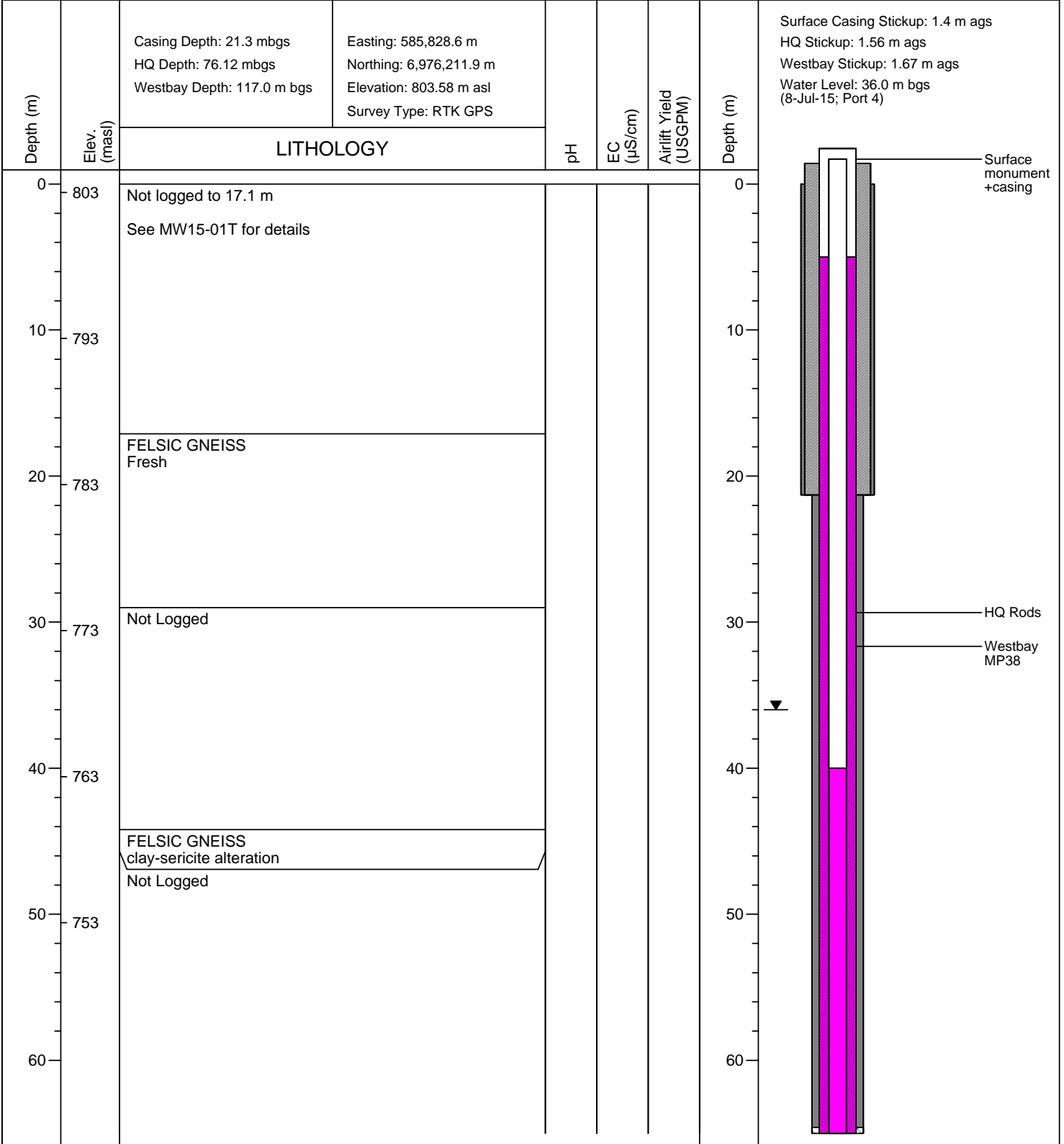
MW15-01WB / BH8-WB / CFR-0977



Coffee Creek Gold
Project #: A362-4

Drilling Started : April 30,2015
 Install Completed : May 05,2015
 Drilling Diameter(s) : 6.0" & 4.5"
 Drilled Depth : 118.56 m
 Completion Depth : 116.72m

Drilling Method : Casing Advance & RC
 Drilling Company : Northspan
 Supervised By : JH/AS/CS (Lorax)
 Logged By : Kaminak
 Checked By : LF



03-04-2016 P:\A362-4 (Coffee Gold Project - Hydrogeology)\Data\BH_Logs\Quicklog\2015\Version 2 (LF)\BH08WB_2.bor



Drilling Started : April 30,2015
 Install Completed : May 05,2015
 Drilling Diameter(s) : 6.0" & 4.5"
 Drilled Depth : 118.56 m
 Completion Depth : 116.72m

Drilling Method : Casing Advance & RC
 Drilling Company : Northspan
 Supervised By : JH/AS/CS (Lorax)
 Logged By : Kaminak
 Checked By : LF

Coffee Creek Gold
 Project #: A362-4

Depth (m)	Elev. (masl)	LITHOLOGY	pH	EC (µS/cm)	Airlift Yield (USGPM)	Depth (m)
		Casing Depth: 21.3 mbgs HQ Depth: 76.12 mbgs Westbay Depth: 117.0 m bgs				
		Easting: 585,828.6 m Northing: 6,976,211.9 m Elevation: 803.58 m asl Survey Type: RTK GPS				
						Surface Casing Stickup: 1.4 m ags HQ Stickup: 1.56 m ags Westbay Stickup: 1.67 m ags Water Level: 36.0 m bgs (8-Jul-15; Port 4)
65	738	FELSIC GNEISS bleached, clay-sericite altered				65
		FELSIC GNEISS fresh				
75	728	FELSIC GNEISS Weakly sericite altered				75
		FELSIC GNEISS fresh *77.7 m less dusty drilling				
85	718	FELSIC GNEISS oxidized, silicified, 0.5% disseminated limonite *82.1 m hit water *82.6 m cuttings show signs of reddish brown staining	n/a	n/a	4.9	85
		FELSIC GNEISS fresh	n/a	n/a	5.4	
			n/a	n/a	2	
95	708	FELSIC GNEISS fresh	n/a	n/a	4	95
			n/a	n/a	5	
105	698	MIXED MAFIC GNEISS fresh, biotite rich	n/a	n/a	6	105
115	688	MIXED MAFIC GNEISS bleached				115
		MIXED MAFIC GNEISS bleached				
125		End of hole 118.6 m (389 ft). *Comment from supervising hydrogeologist; lithology logged by Kaminak Primary Zone 2 was sampled Datum: UTM NAD83 Zone 7				125

