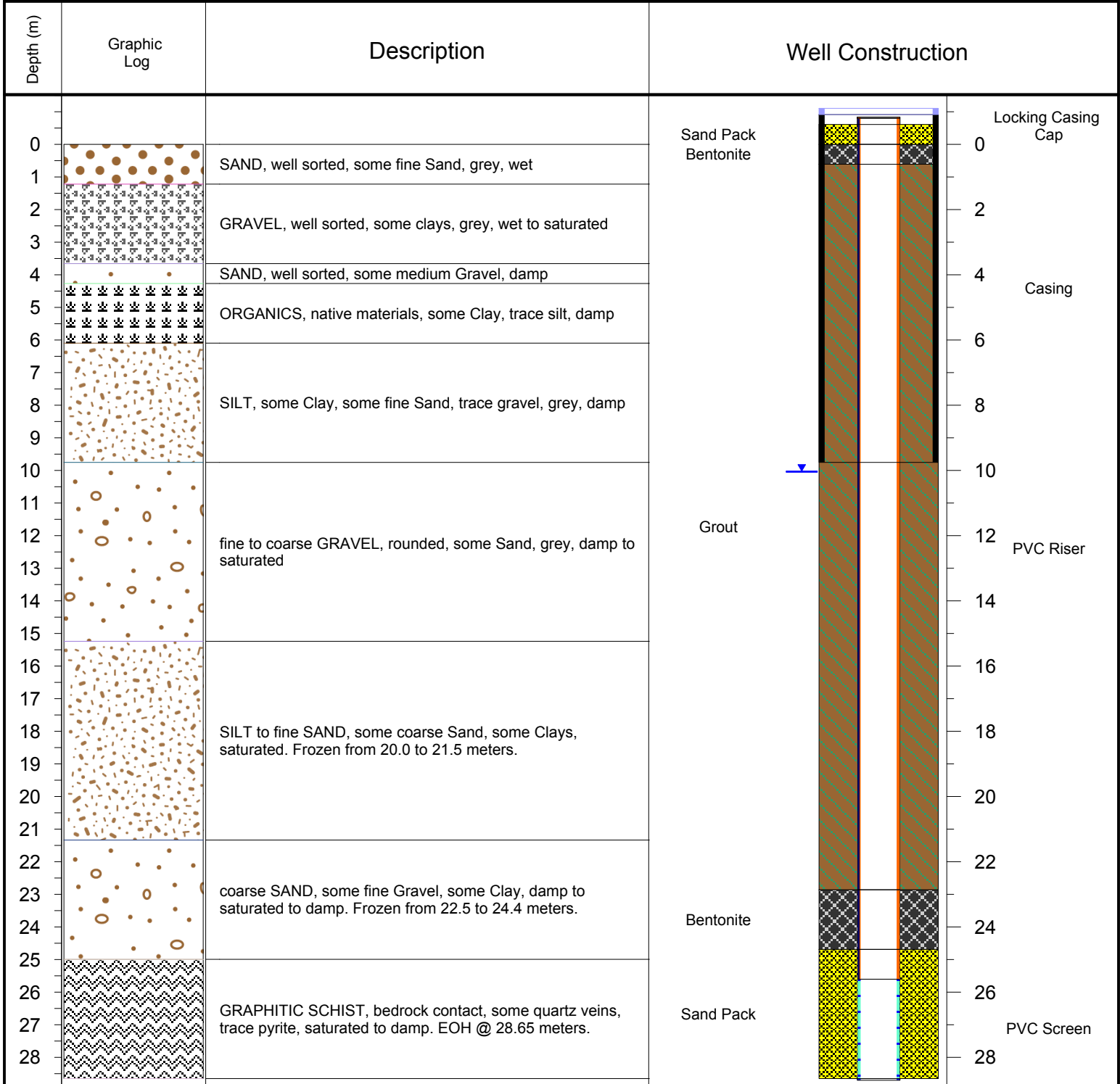




PROJECT: ERDC Site Wide Monitoring Plan (13 002-4)		BORING ID: KAR13-004	
LOCATION: Keno Hills Silver District (KHSD)		WELL ID: Lower Level at Sadie Ladue (Complete)	
DRILLING CONTRACTOR: Access Consulting Group		NORTHING: 7092688	EASTING: 485910
DRILLING EQUIPMENT: Midnight Sun Drilling Inc.		GROUND SURFACE ELEV. (masl): N/A	TOC ELEVATION (m ags): 0.91
DRILLING METHOD: Air Rotary		TOTAL DEPTH (m): 28.65	WATER DEPTH (m bgs): 10.86
LOGGED BY: KR	SAMPLING METHOD: 2 Feet (0.61 m) Continuous Sampling	DATE STARTED: September 6, 2013	DATE COMPLETED: September 7, 2013



NOTES: Wells are 2 inch in diameter.
EOH @ 28.65m.