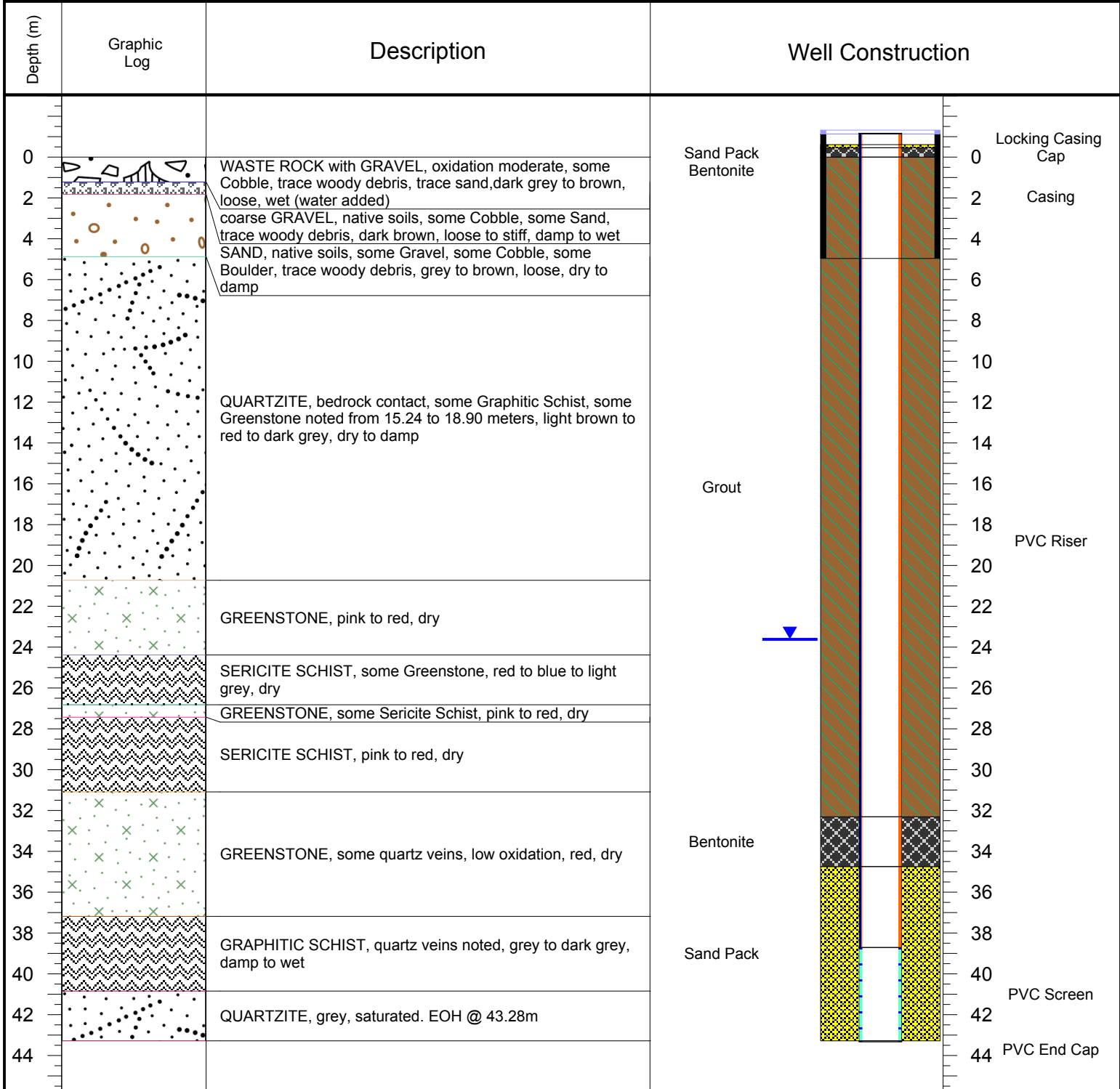




PROJECT: <b>ERDC Site Wide Monitoring Plan (13 002-4)</b>	BORING ID: <b>KAR13-014 (Completed)</b>	
LOCATION: <b>Keno Hills Silver District (KHSD)</b>	WELL ID: <b>Silver King (Completed)</b>	
DRILLING CONTRACTOR: <b>Access Consulting Group</b>	NORTHING: <b>7085554</b>	EASTING: <b>472009</b>
DRILLING EQUIPMENT: <b>Midnight Sun Drilling Inc.</b>	GROUND SURFACE ELEV. (masl): <b>756</b>	TOC ELEVATION (m ags): <b>1.13</b>
DRILLING METHOD: <b>Air Rotary</b>	TOTAL DEPTH (m): <b>43.28</b>	WATER DEPTH (m bgs): <b>23.62</b>
LOGGED BY: <b>KR</b>	SAMPLING METHOD: <b>2 Feet (0.61 m) Continuous Sampling</b>	DATE COMPLETED: <b>September 8, 2013</b>
	DATE STARTED: <b>September 7, 2013</b>	



NOTES: Wells are 2 inches in diameter.  
EOH @ 43.28m.