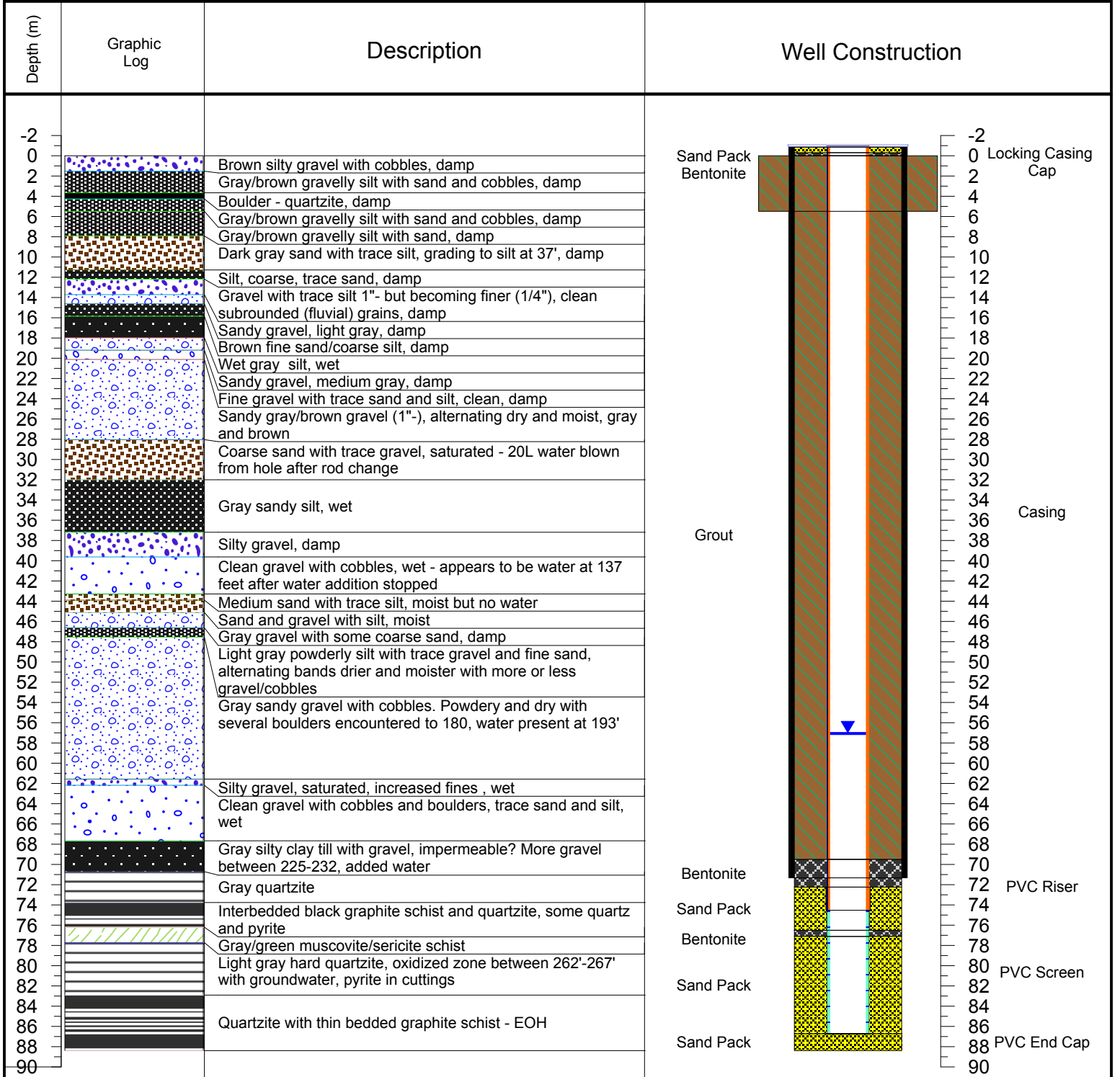




PROJECT: <b>ERDC Site Wide Monitoring Plan (13 002-04)</b>	WELL ID: <b>KV-84N-D</b>	
LOCATION: <b>Keno Hills Silver District (KHSD)</b>	WELL MATERIAL: <b>Fire Hall Deep</b>	
DRILLING CONTRACTOR: <b>Access Consulting Group</b>	NORTHING:	EASTING: <b>Need survey from AXR s</b>
DRILLING EQUIPMENT: <b>Midnight Sun Drilling Inc.</b>	GROUND SURFACE ELEV. (masl):	TOC ELEVATION (m ags): <b>0.8634984</b>
DRILLING METHOD: <b>Air Rotary</b>	TOTAL DEPTH (m): <b>88.392</b>	WATER DEPTH (m bgs): <b>57.068</b>
LOGGED BY: <b>EA</b>	SAMPLING METHOD: <b>Interval by major lithology</b>	DATE STARTED: <b>30-Oct-13</b>
		DATE COMPLETED: <b>1-Nov-13</b>



NOTES: Stuck casing near top of bedrock at 234 feet

Bedrock Borehole Diameter: 6"  
 QZ17-076 - Overburden Diameter: 7 3/8"  
 Surface Seal Borehole Diameter: 10"