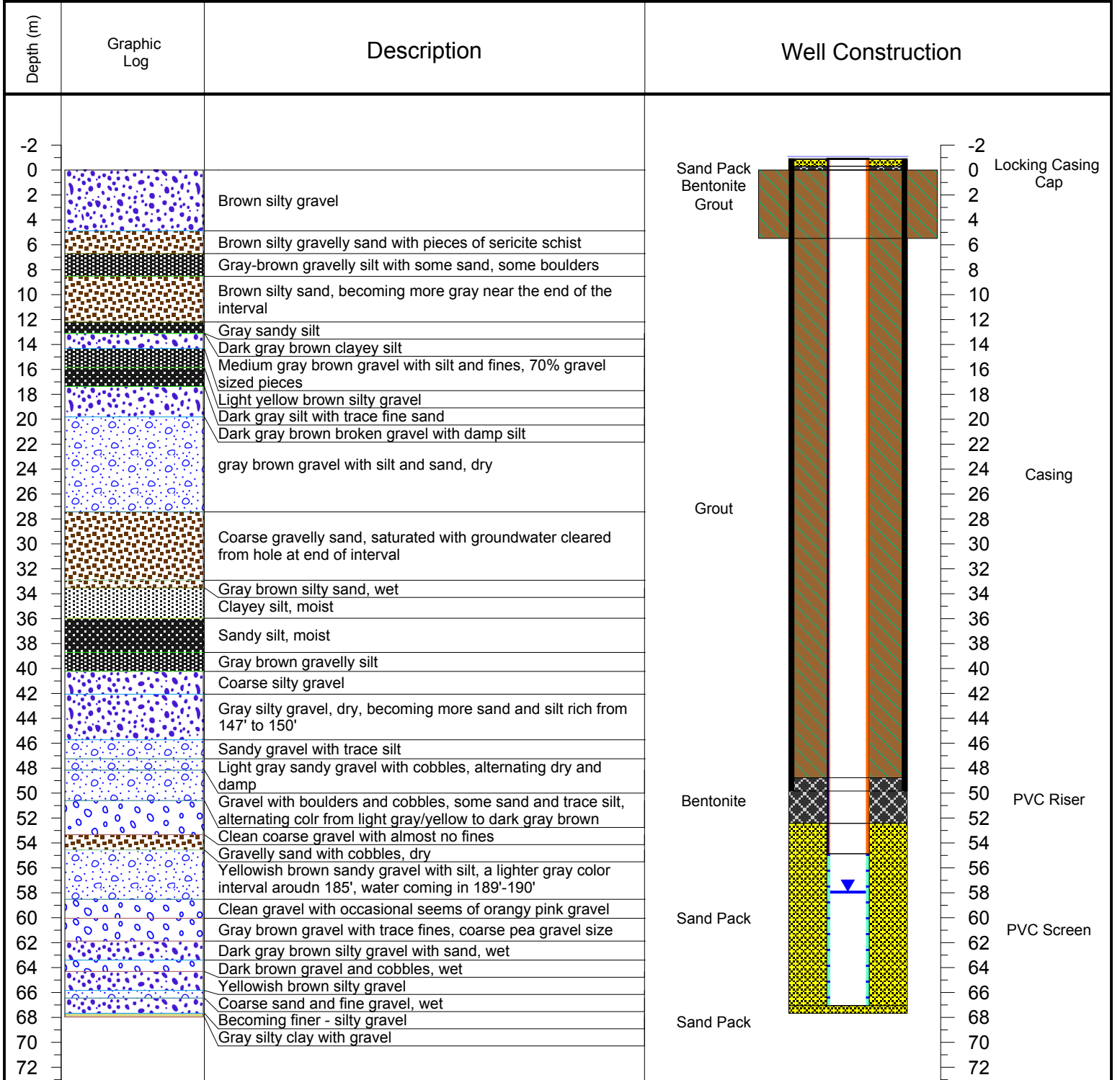




PROJECT: <b>ERDC Site Wide Monitoring Plan (13 002-04)</b>	BORING ID: <b>KV-84N-S</b>		
	LOCATION: <b>Keno Hills Silver District (KHSD)</b>		
	DRILLING CONTRACTOR: <b>Access Consulting Group</b>		
	DRILLING EQUIPMENT: <b>Midnight Sun Drilling Inc.</b>		
	DRILLING METHOD: <b>Air Rotary</b>		
LOGGED BY: <b>LF</b>	SAMPLING METHOD: <b>Interval by major lithology</b>	NORTHING:	EASTING: <b>Need survey from AXR s</b>
		GROUND SURFACE ELEV. (masl):	TOC ELEVATION (m ags): <b>0.8634984</b>
		TOTAL DEPTH (m): <b>67.6656</b>	WATER DEPTH (m bgs): <b>57.946</b>
		DATE STARTED: <b>2-Nov-13</b>	DATE COMPLETED: <b>4-Nov-13</b>



NOTES: Stuck casing, melted PVC and redrilled

Bedrock Borehole Diameter: 6"  
 QZ17-076 Overburden Borehole Diameter: 7 3/8"  
 Surface Seal Borehole Diameter: 10"