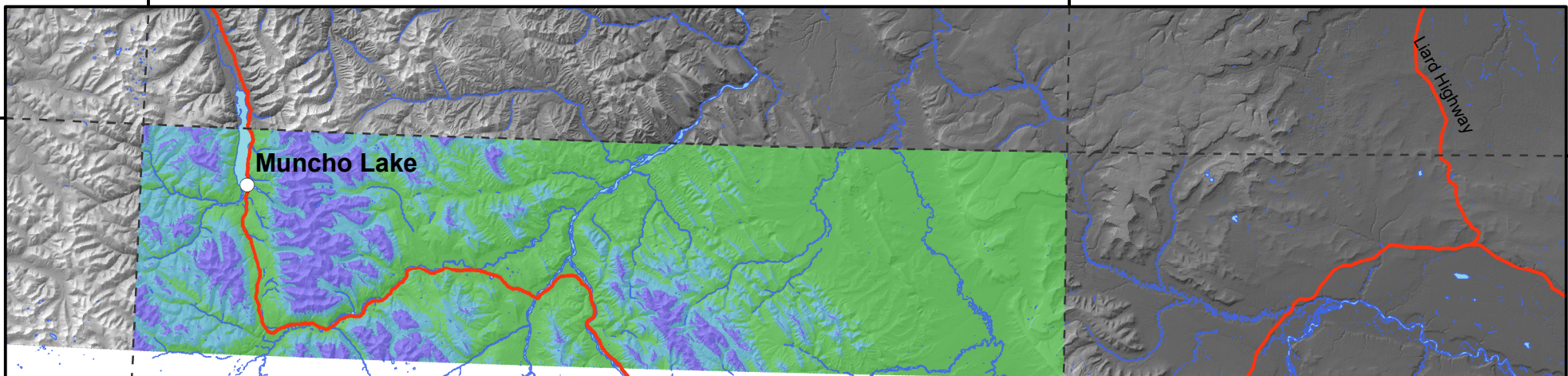


126°0'0"W

124°0'0"W

59°0'0"N

59°0'0"N



Muncho Lake

Liard Highway

Alaska Highway

BC

Legend

NTS 094K

- Isolated Patches
- Sporadic Discontinuous
- Extensive Discontinuous
- Continuous

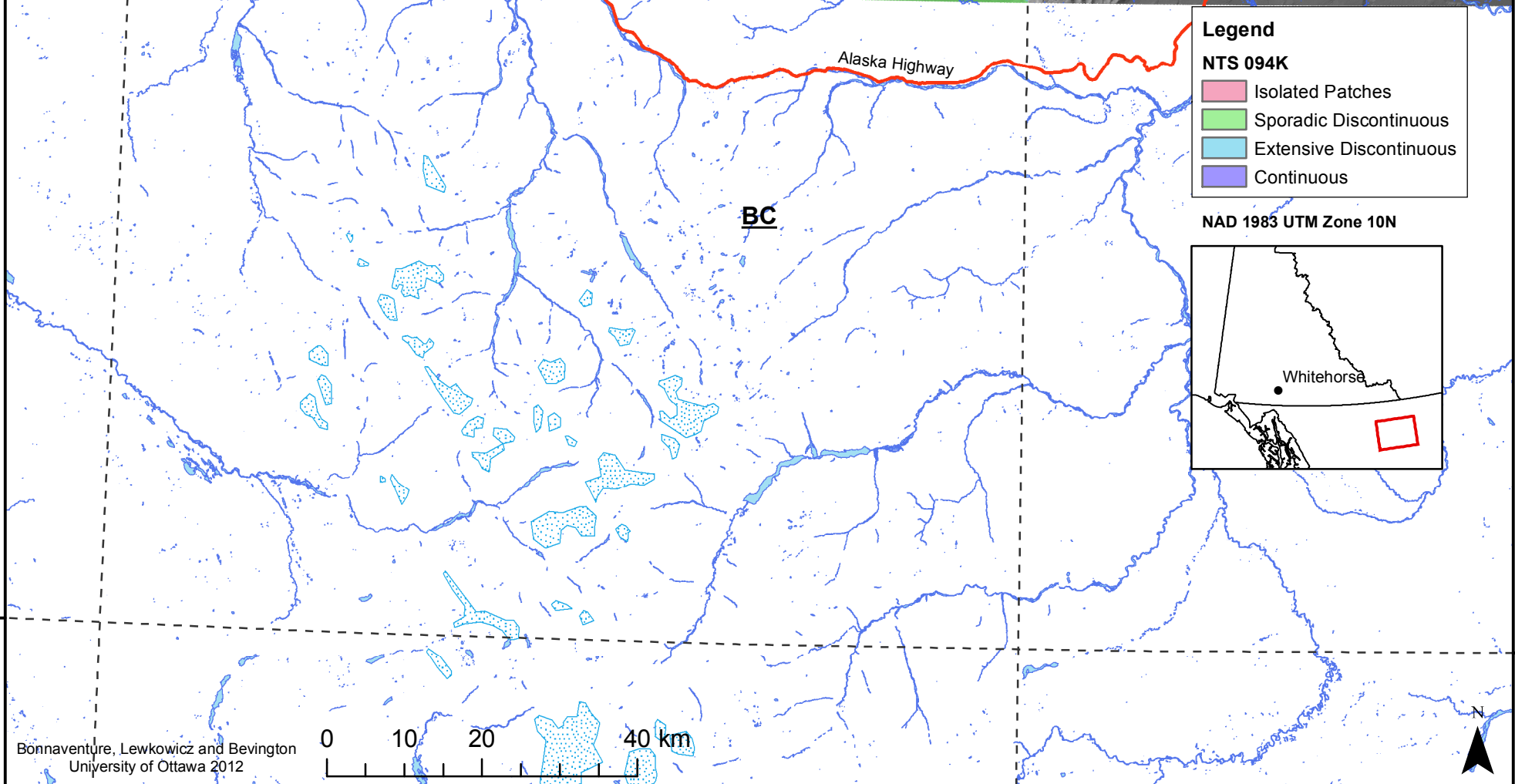
NAD 1983 UTM Zone 10N

An inset map showing the location of the study area within the province of British Columbia. A red rectangle highlights the specific area shown in the main map. The city of Whitehorse is marked with a black dot.

Whitehorse

58°0'0"N

58°0'0"N



Bonnaventure, Lewkowicz and Bevington
University of Ottawa 2012

126°0'0"W

124°0'0"W