

128°0'0"W

126°0'0"W

61°0'0"N

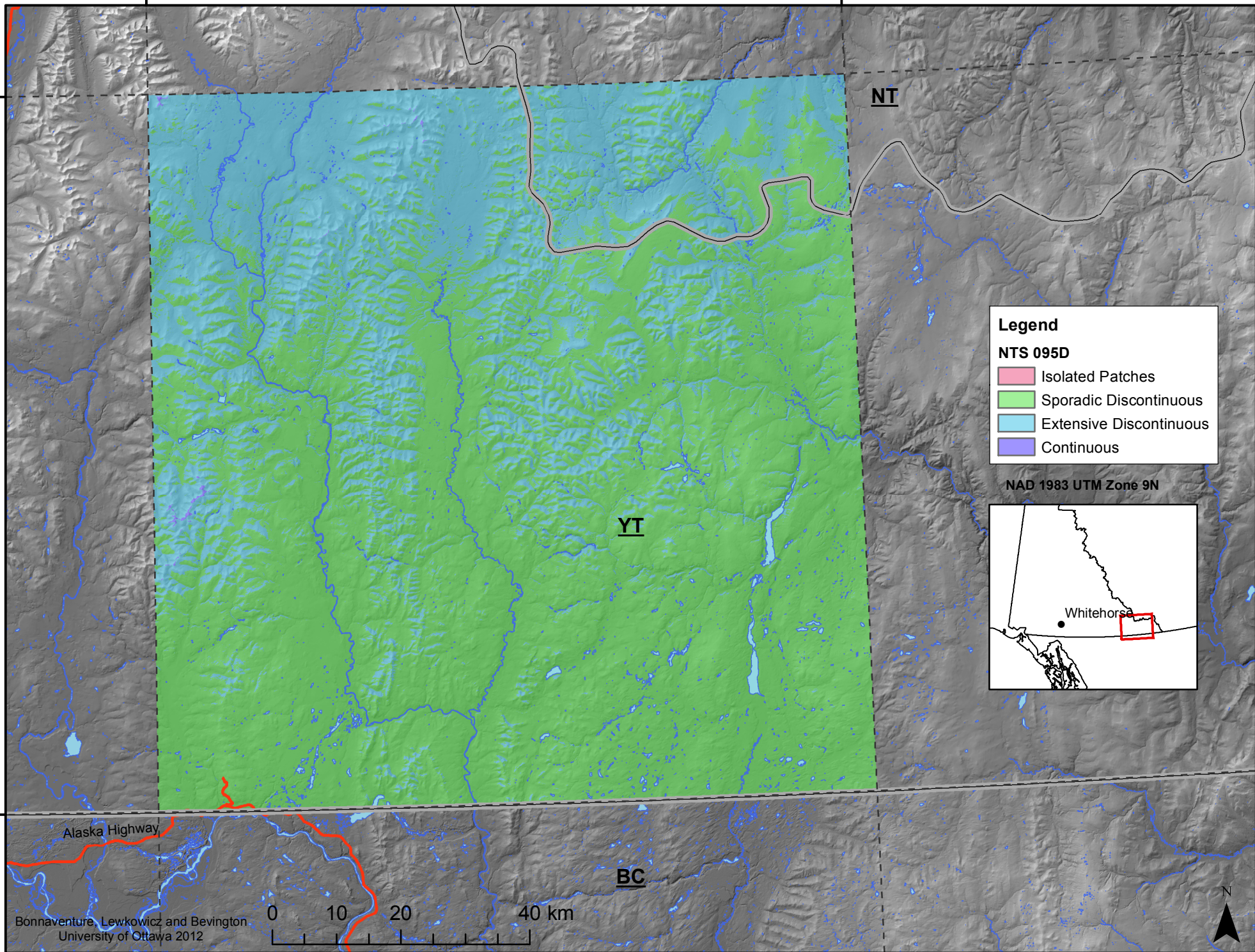
60°0'0"N

61°0'0"N

60°0'0"N

128°0'0"W

126°0'0"W



Legend

NTS 095D

- Isolated Patches
- Sporadic Discontinuous
- Extensive Discontinuous
- Continuous

NAD 1983 UTM Zone 9N

Whitehorse

Bonnaventure, Lewkowicz and Bevington
University of Ottawa 2012

