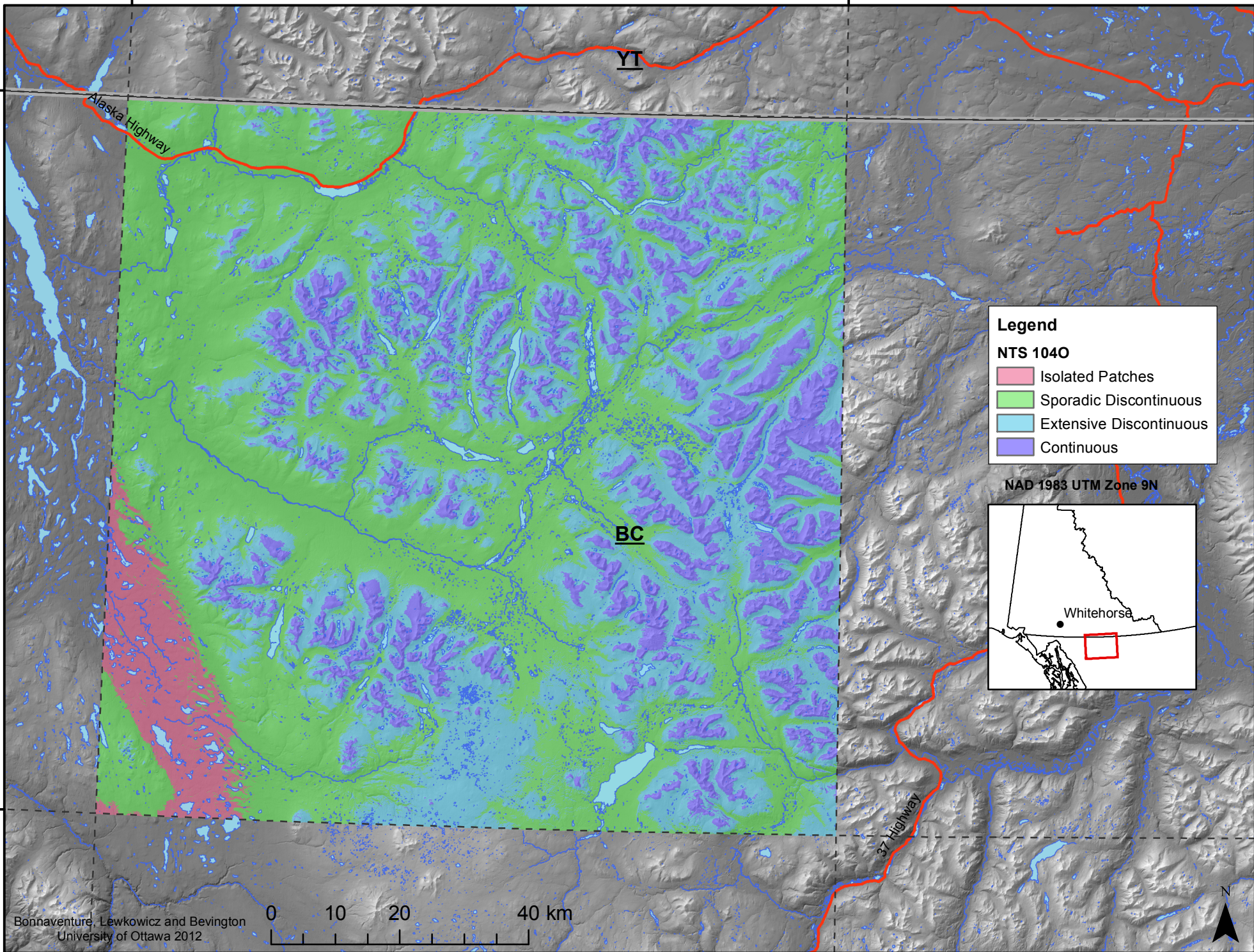


132°0'0"W

130°0'0"W

60°0'0"N

59°0'0"N



Legend

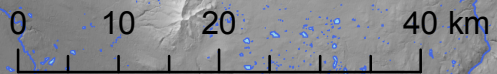
NTS 1040

- Isolated Patches
- Sporadic Discontinuous
- Extensive Discontinuous
- Continuous

NAD 1983 UTM Zone 9N

Whitehorse

Bonnaventure, Lewkowicz and Bevington
University of Ottawa 2012



132°0'0"W

130°0'0"W