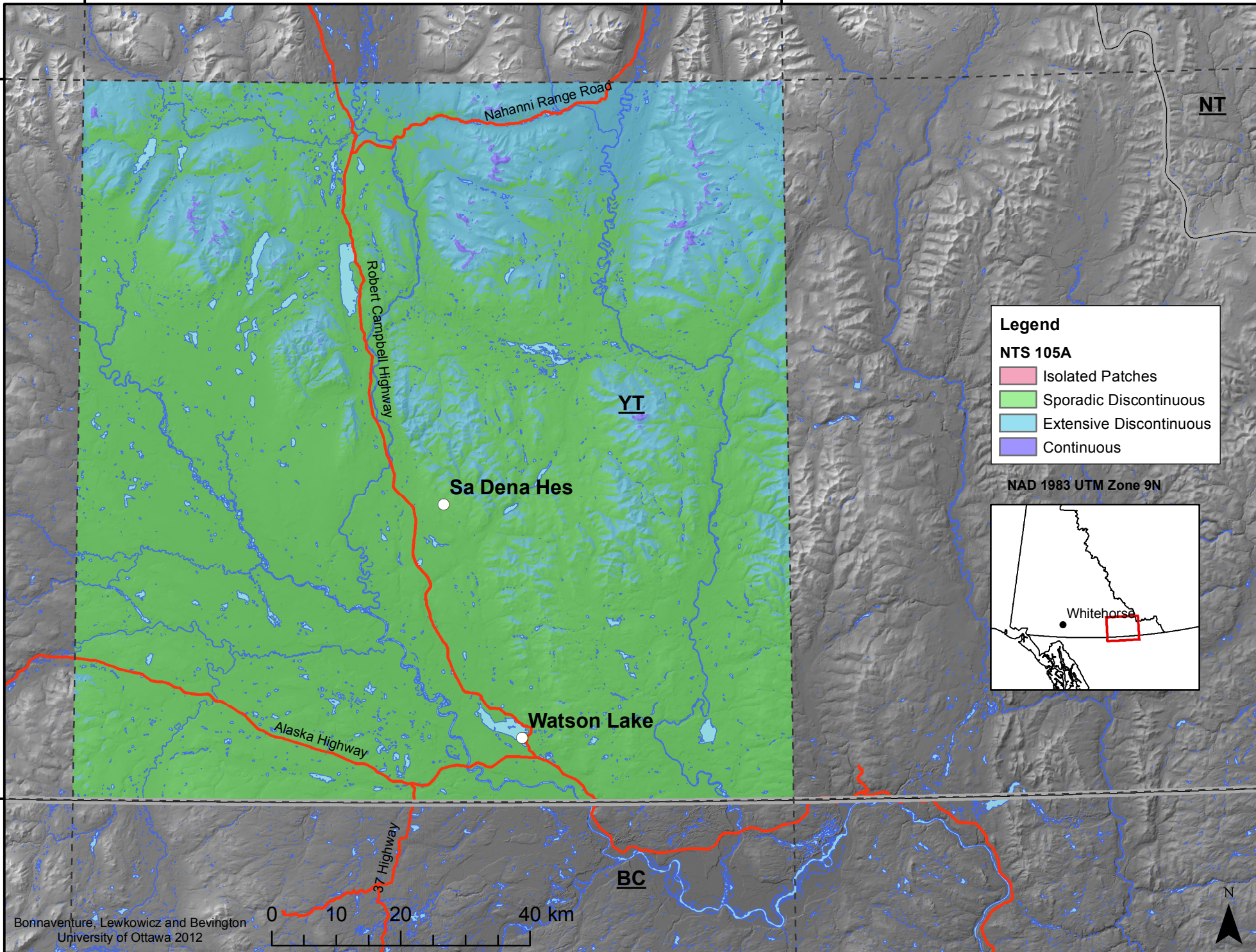


130°0'0"W

128°0'0"W

61°0'0"N

61°0'0"N

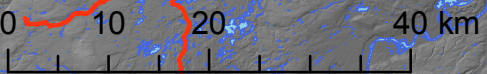


Legend

NTS 105A

- Isolated Patches
- Sporadic Discontinuous
- Extensive Discontinuous
- Continuous

NAD 1983 UTM Zone 9N



Bonnaventure, Lewkowicz and Bevington
University of Ottawa 2012



60°0'0"N

60°0'0"N

130°0'0"W

128°0'0"W