

134°0'0"W

132°0'0"W

62°0'0"N

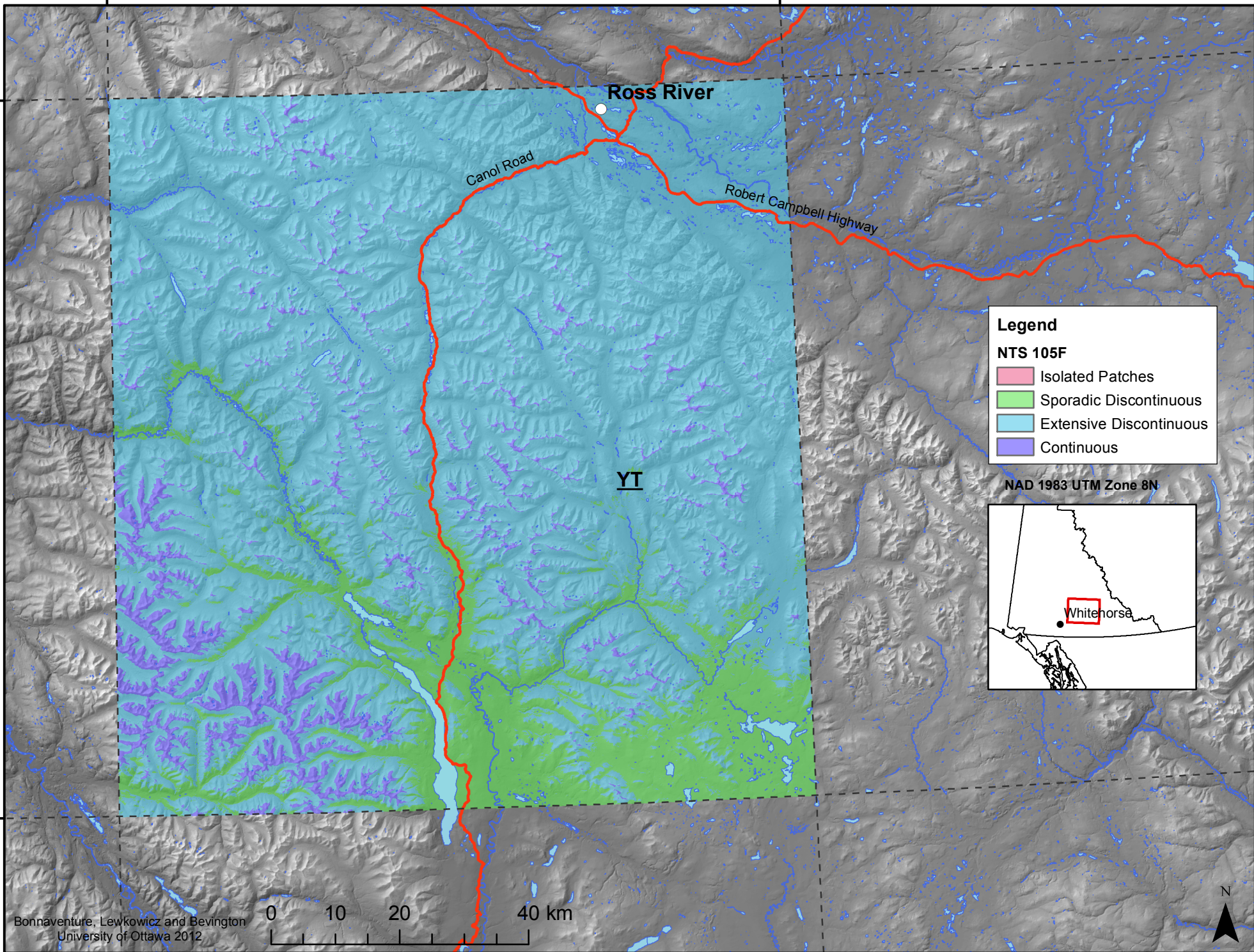
61°0'0"N

62°0'0"N

61°0'0"N

134°0'0"W

132°0'0"W



Ross River

Canol Road

Robert Campbell Highway

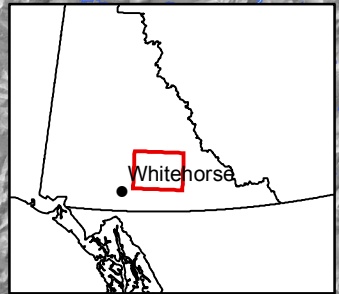
YI

**Legend**

**NTS 105F**

- Isolated Patches
- Sporadic Discontinuous
- Extensive Discontinuous
- Continuous

NAD 1983 UTM Zone 8N



Whitehorse

Bonnaventure, Lewkowitz and Bevington  
University of Ottawa 2012

