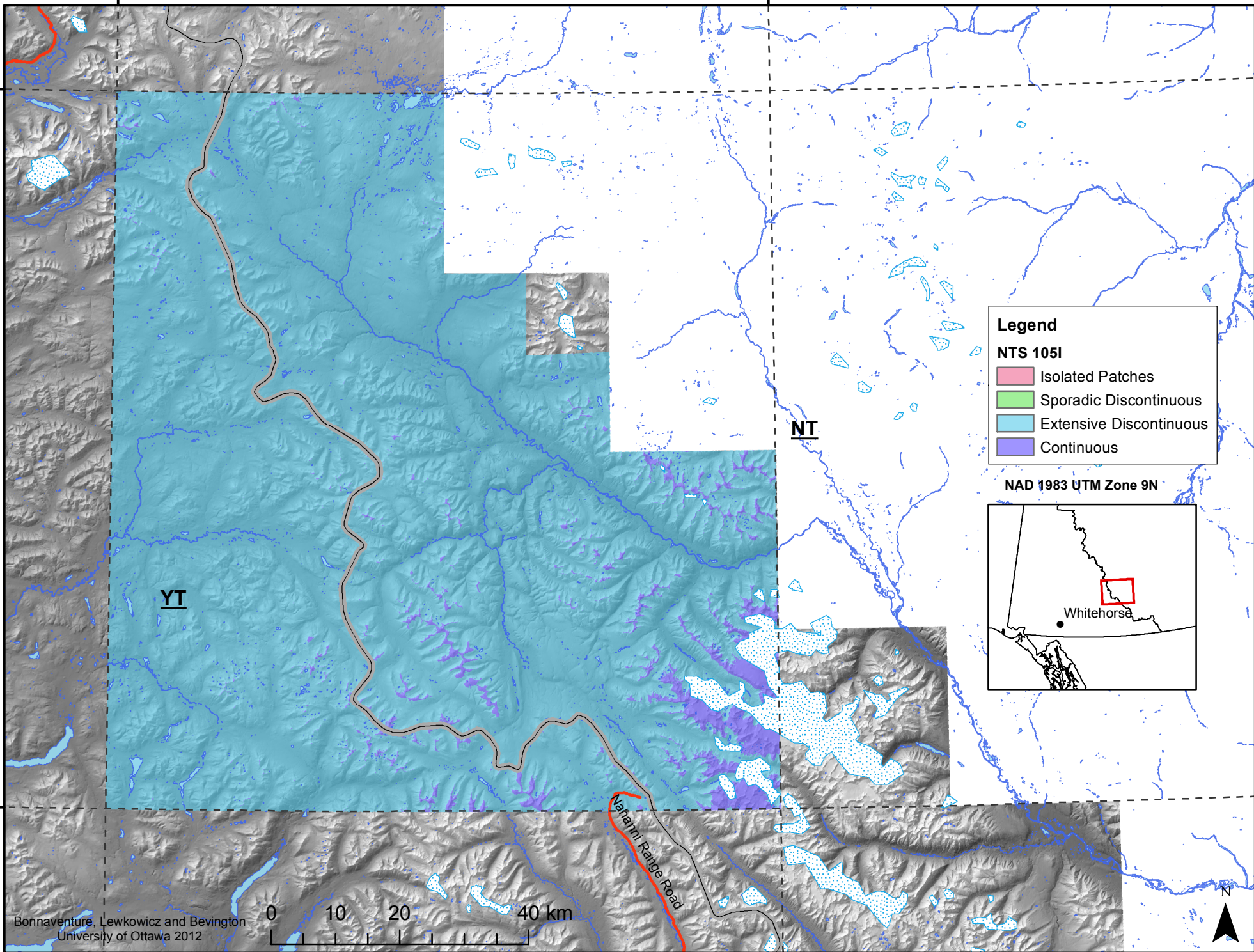


130°0'0"W

128°0'0"W

63°0'0"N

63°0'0"N



Legend

NTS 1051

- Isolated Patches
- Sporadic Discontinuous
- Extensive Discontinuous
- Continuous

NAD 1983 UTM Zone 9N

Whitehorse

Bonnaventure, Lewkowitz and Bevington
University of Ottawa 2012



130°0'0"W

128°0'0"W

62°0'0"N

62°0'0"N