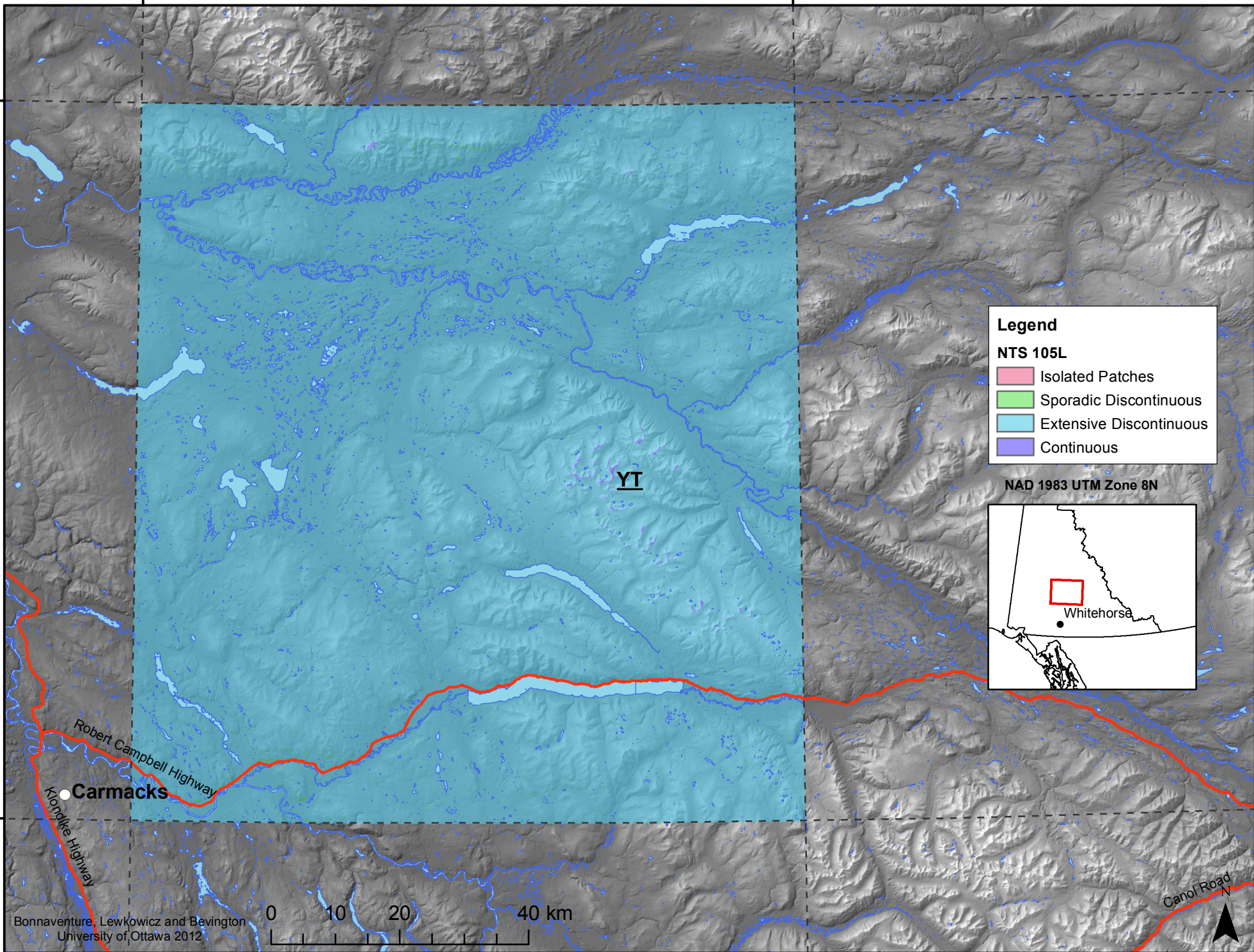


136°0'0"W

134°0'0"W

63°0'0"N

63°0'0"N



Legend

NTS 105L

- Isolated Patches
- Sporadic Discontinuous
- Extensive Discontinuous
- Continuous

NAD 1983 UTM Zone 8N

Whitehorse

Bonnaventure, Lewkowitz and Bevington
University of Ottawa 2012



62°0'0"N

62°0'0"N

136°0'0"W

134°0'0"W

Canol Road

Robert Campbell Highway
Carmacks
Klondike Highway

YT