

130°0'0\"/>

128°0'0\"/>

65°0'0\"/>

65°0'0\"/>

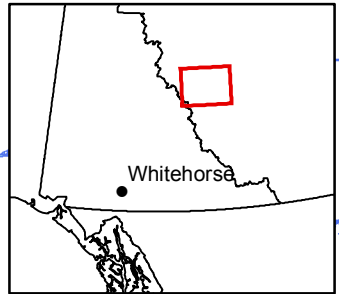
NT

Legend

NTS 106A

- Isolated Patches
- Sporadic Discontinuous
- Extensive Discontinuous
- Continuous

NAD 1983 UTM Zone 9N

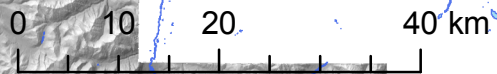


Whitehorse

64°0'0\"/>

64°0'0\"/>

YT
Bonnaventure, Lewkowicz and Bevington
University of Ottawa 2012



130°0'0\"/>

128°0'0\"/>