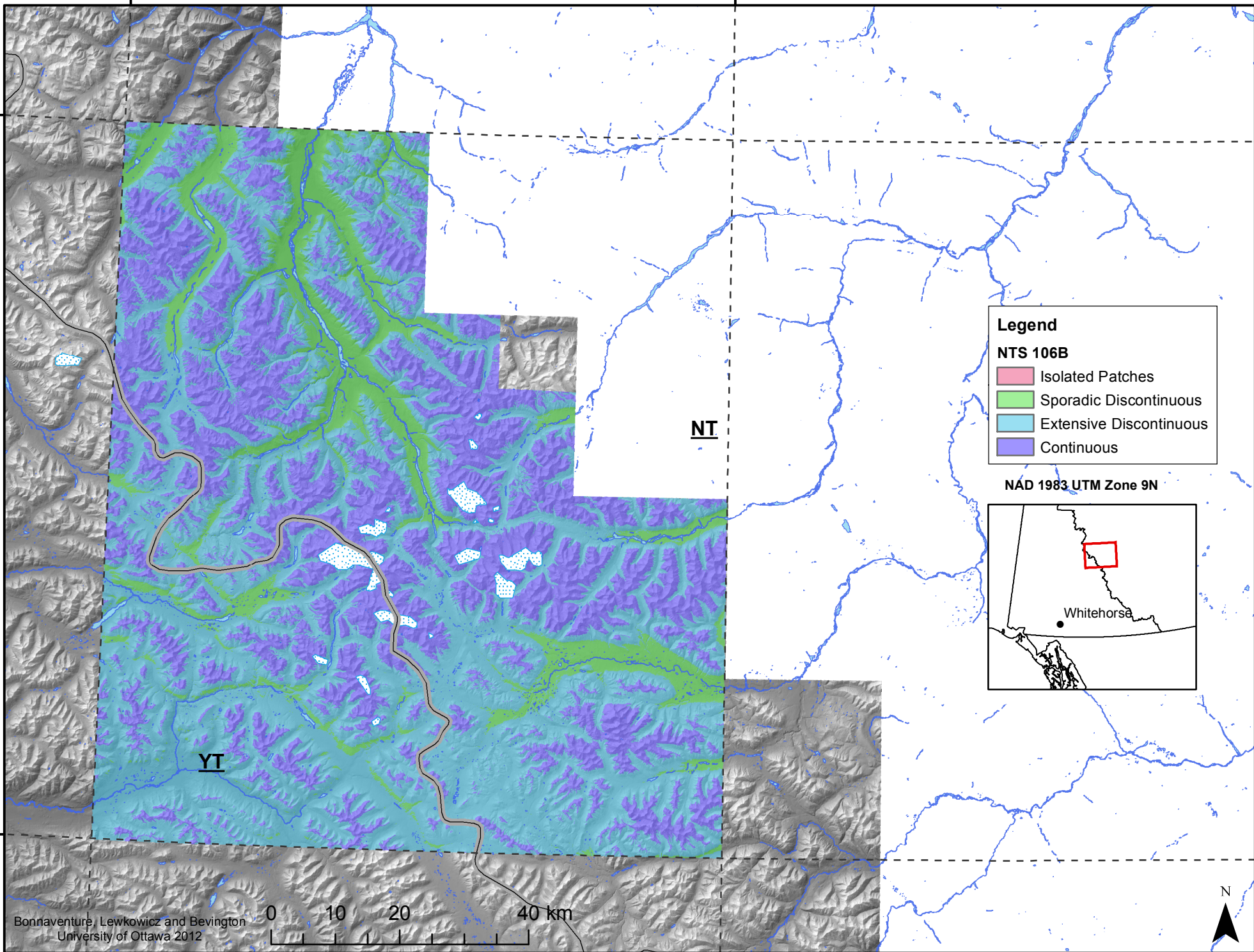


132°0'0"W

130°0'0"W

65°0'0"N

64°0'0"N



**Legend**

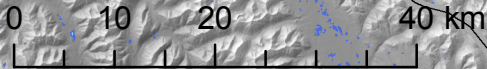
**NTS 106B**

- Isolated Patches
- Sporadic Discontinuous
- Extensive Discontinuous
- Continuous

NAD 1983 UTM Zone 9N



Bonriaventre, Lewkowicz and Bevington  
University of Ottawa 2012



132°0'0"W

130°0'0"W